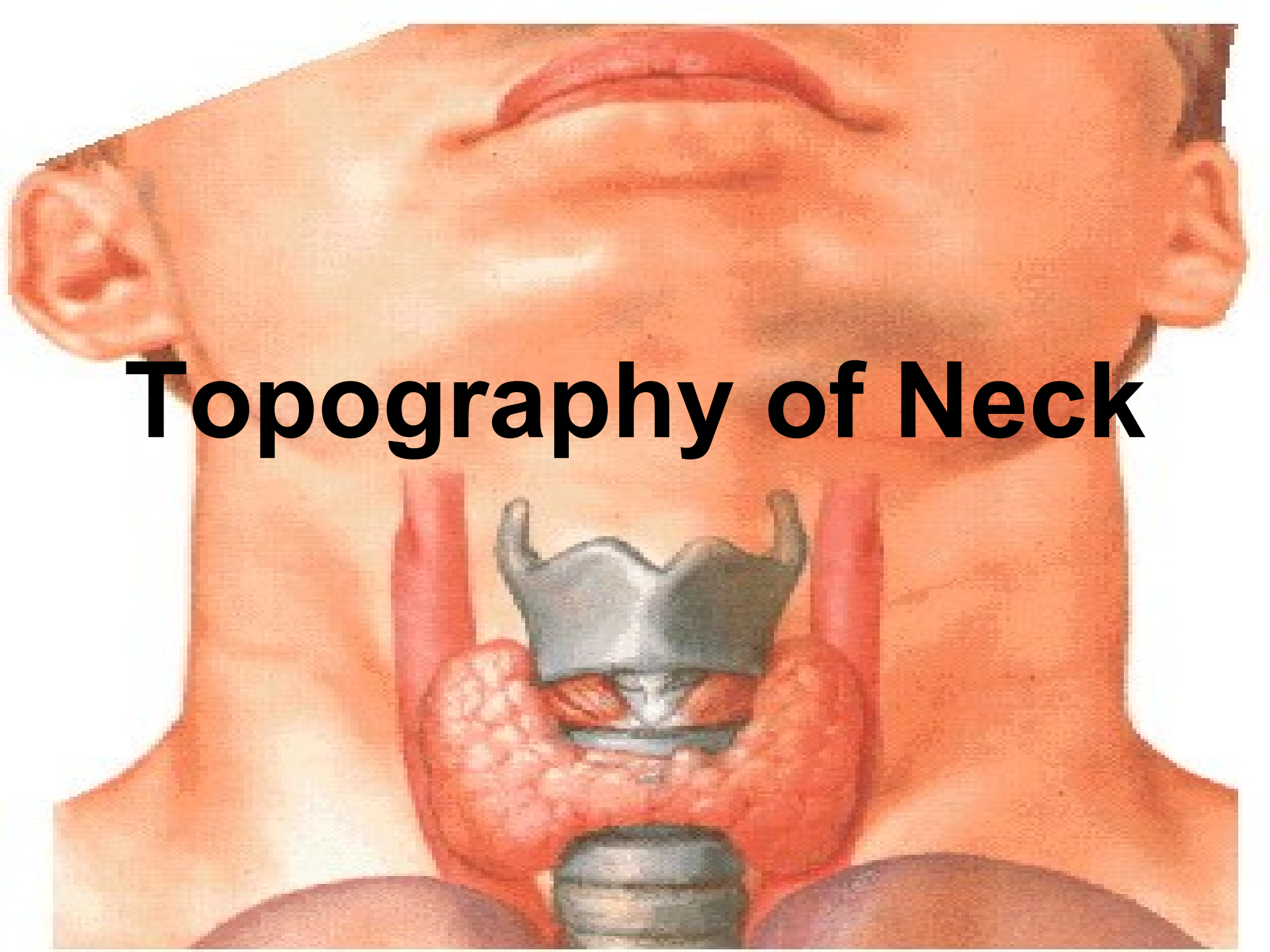


Topography of Neck



ANTERIOR CERVICAL REGION:

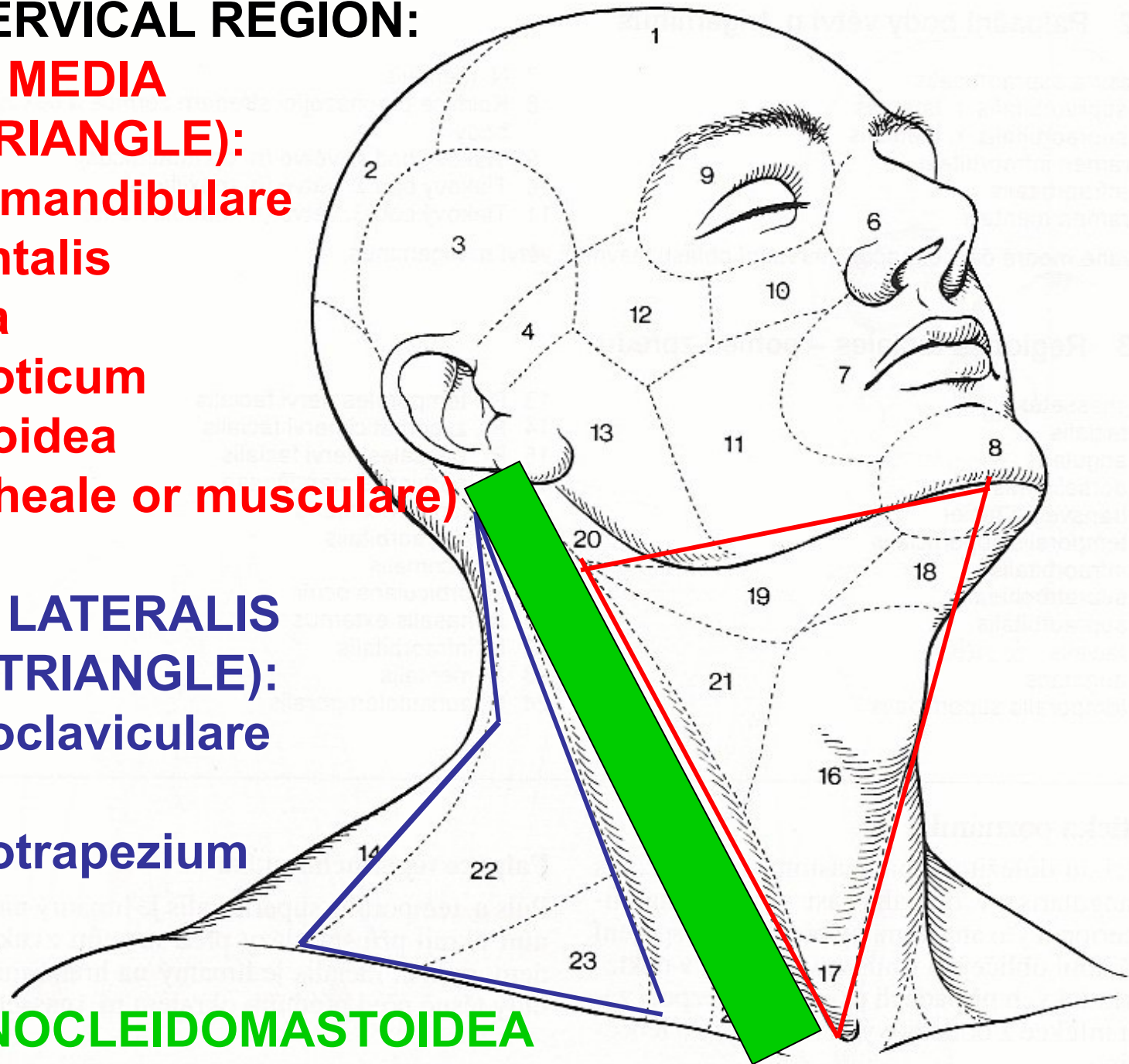
**REGIO COLLI MEDIA
(ANTERIOR TRIANGLE):**

- Trigonum submandibulare
- Regio submentalis
- Regio hyoidea
- Trigonum caroticum
- Regio infrahyoidea
(trig. omotracheale or musculare)

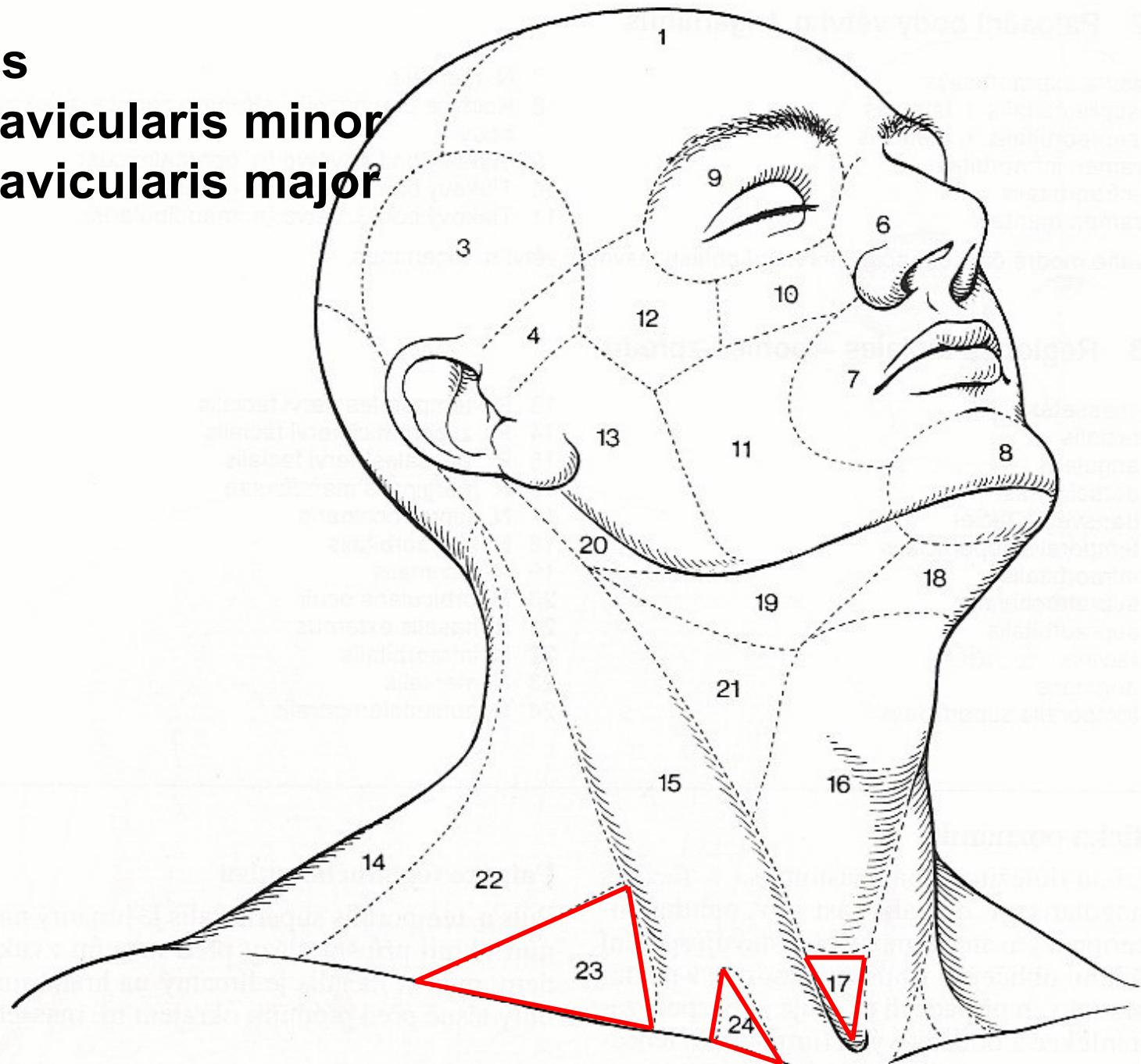
**REGIO COLLI LATERALIS
(POSTERIOR TRIANGLE):**

- Trigonum omoclaviculare
(subclavium)
- Trigonum omotrapezium
(occipitale)

REGIO STERNOCLEIDOMASTOIDEA

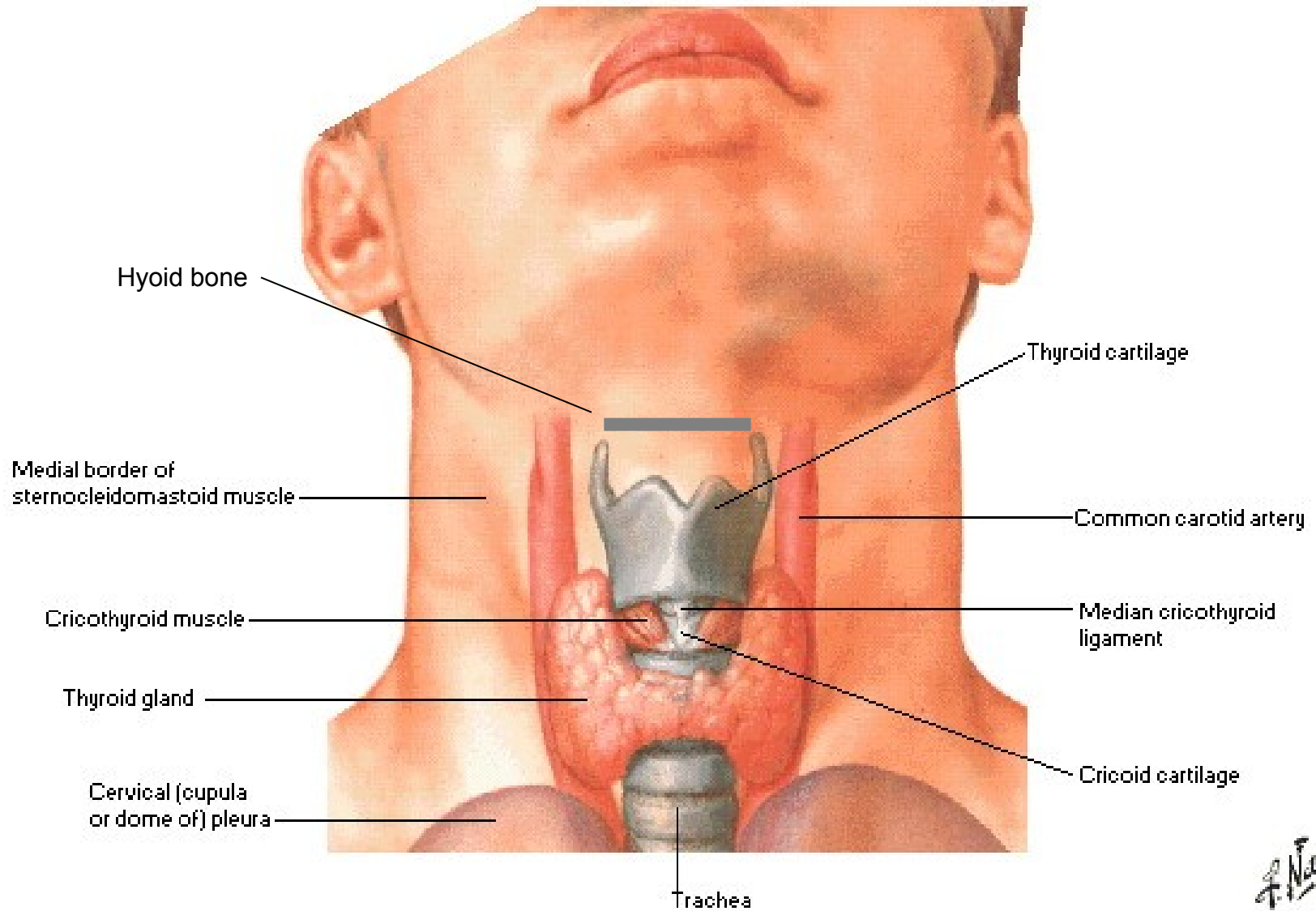


Fossa jugularis
Fossa supraclavicularis minor
Fossa supraclavicularis major



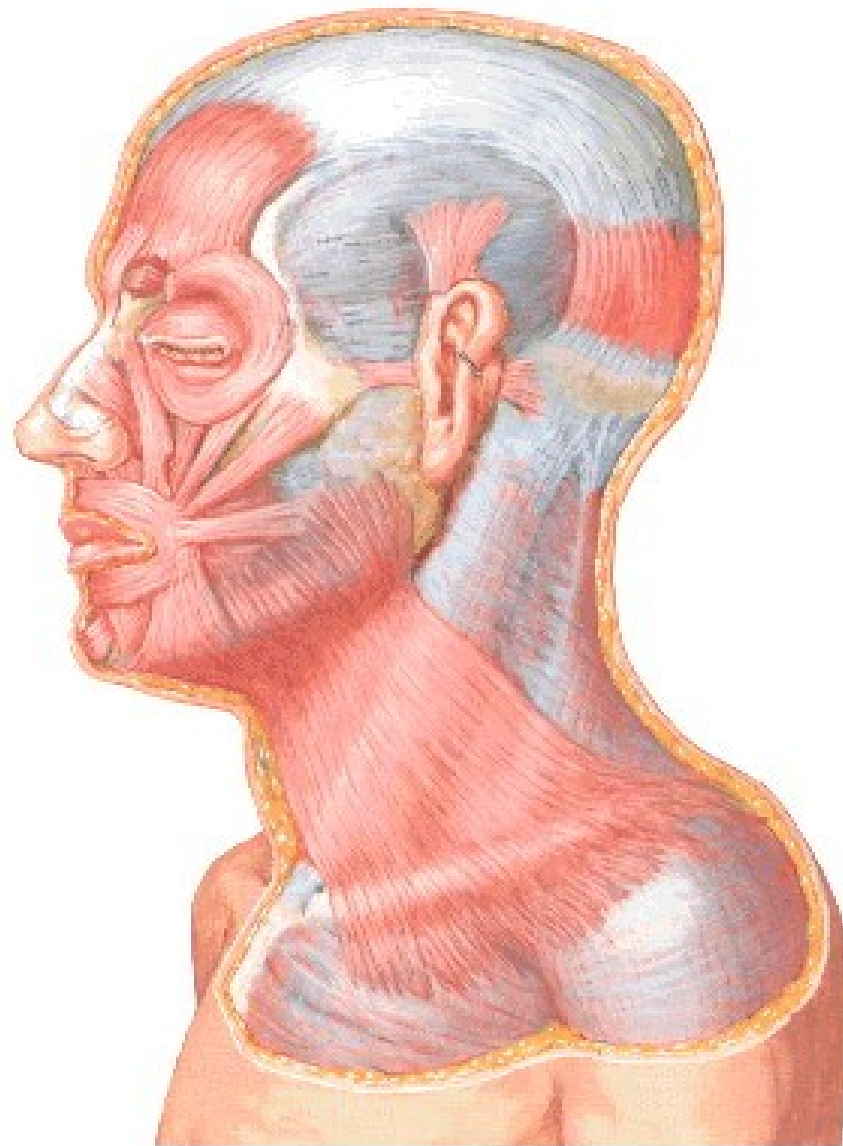
Thyroid Gland in Situ

Anterior View



Muscles of Facial Expression

Lateral View



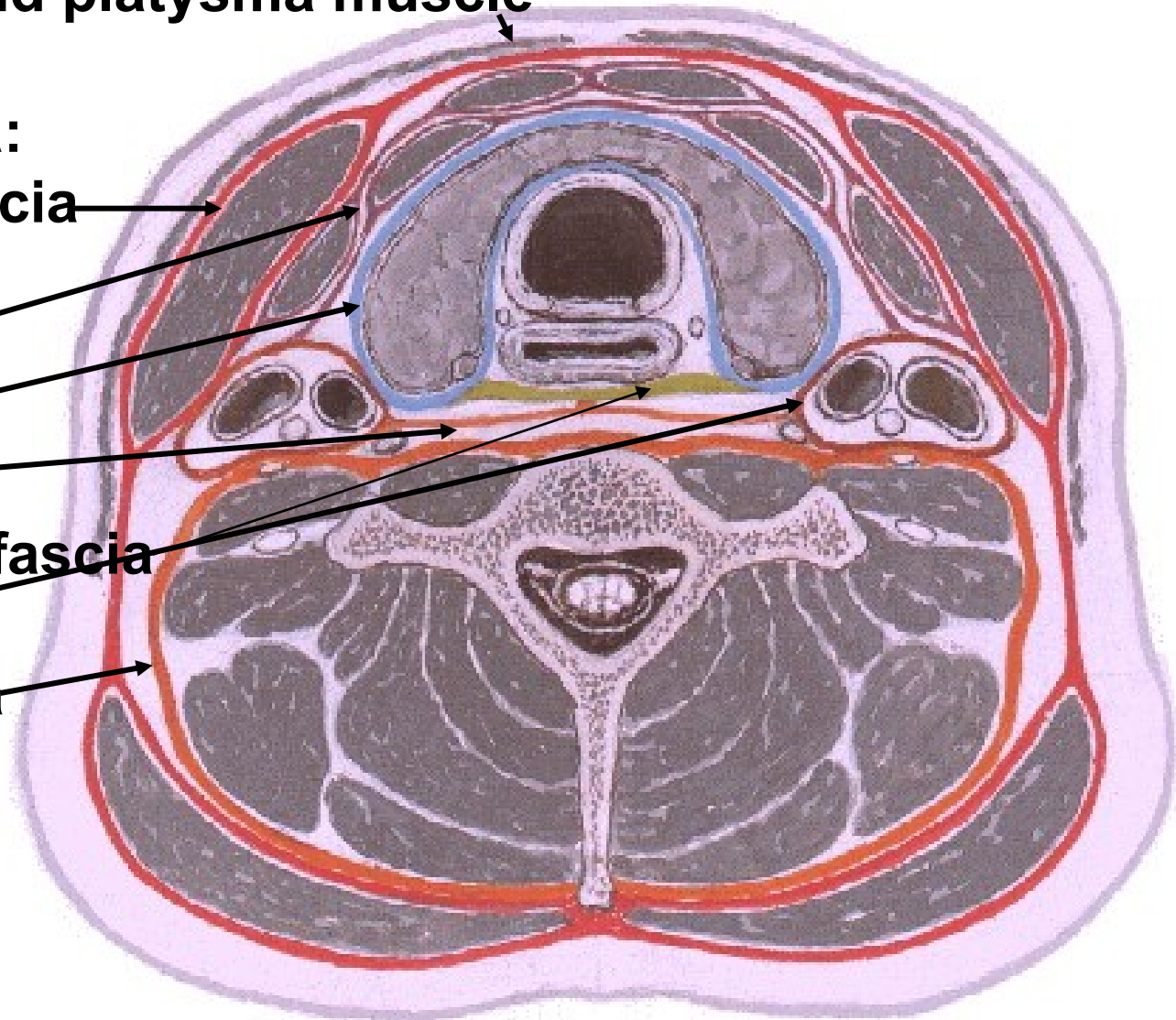
Fascial Layers of Neck

Cross Section

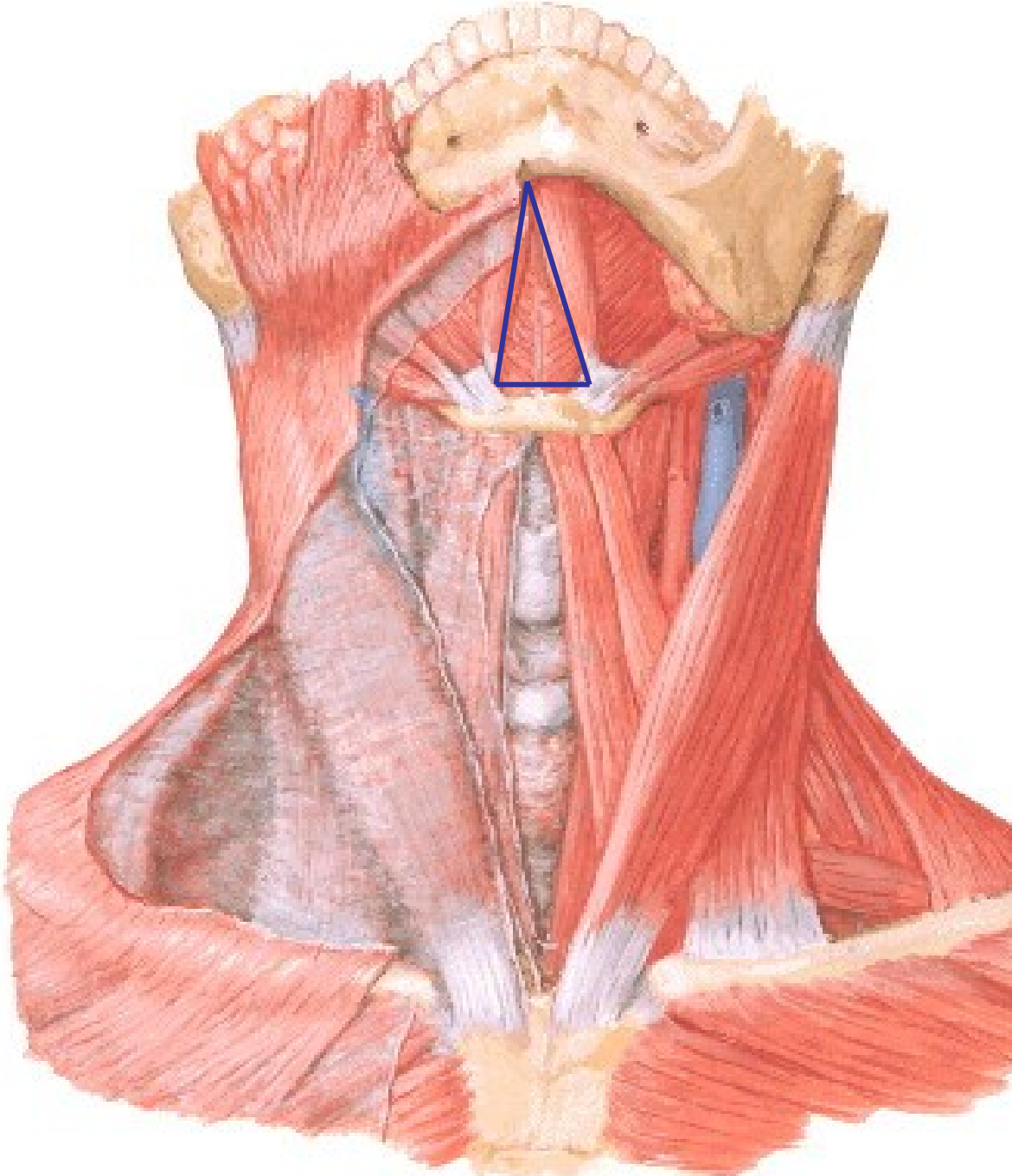
Superficial fascia and platysma muscle

Deep cervical fascia:

- Deep investing fascia
- Pretracheal fascia
(muscular layer,
visceral layer)
- Alar fascia
- Buccopharyngeal fascia
- Carotid sheath
- Prevertebral fascia

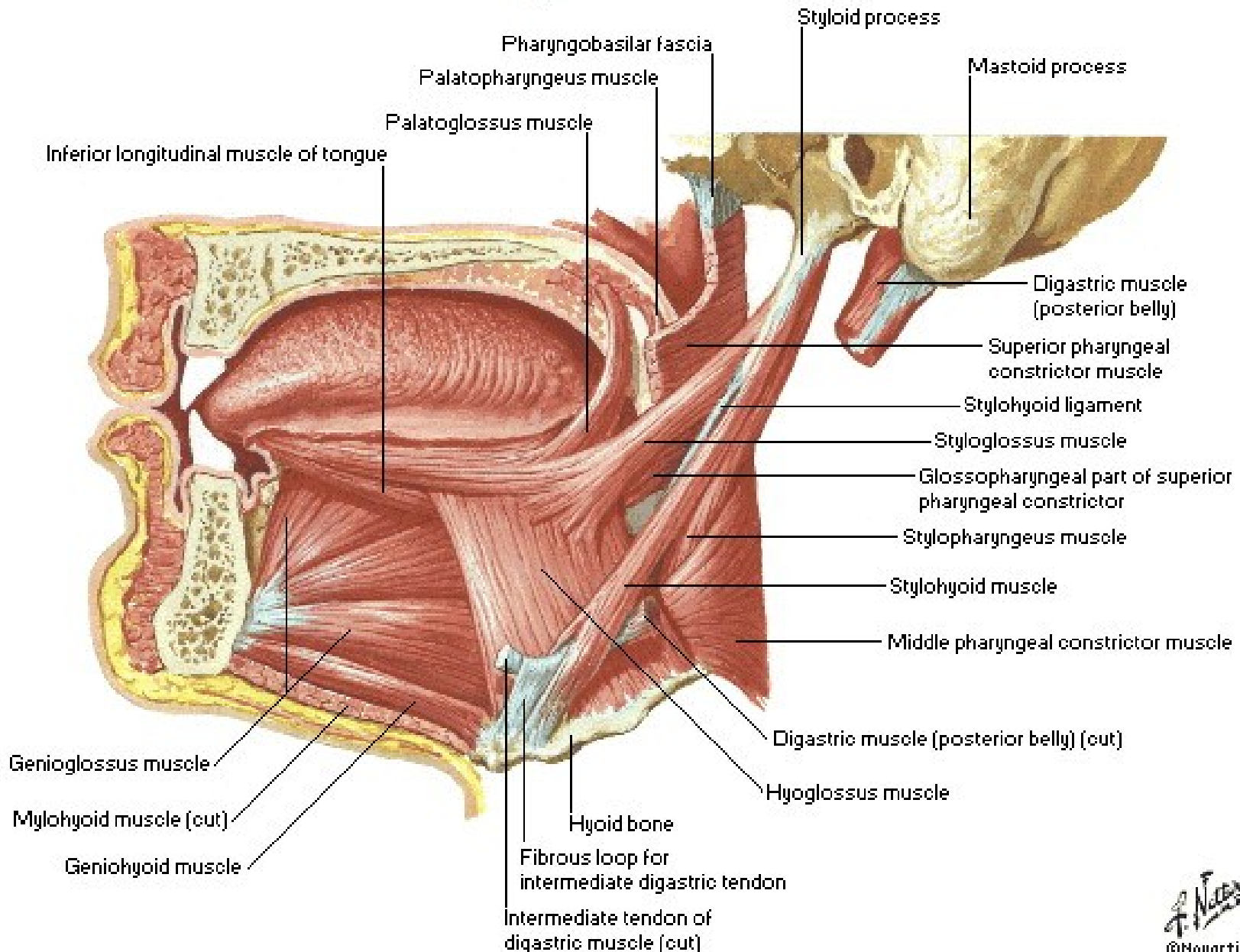


Regio submentalis



Muscles of Tongue

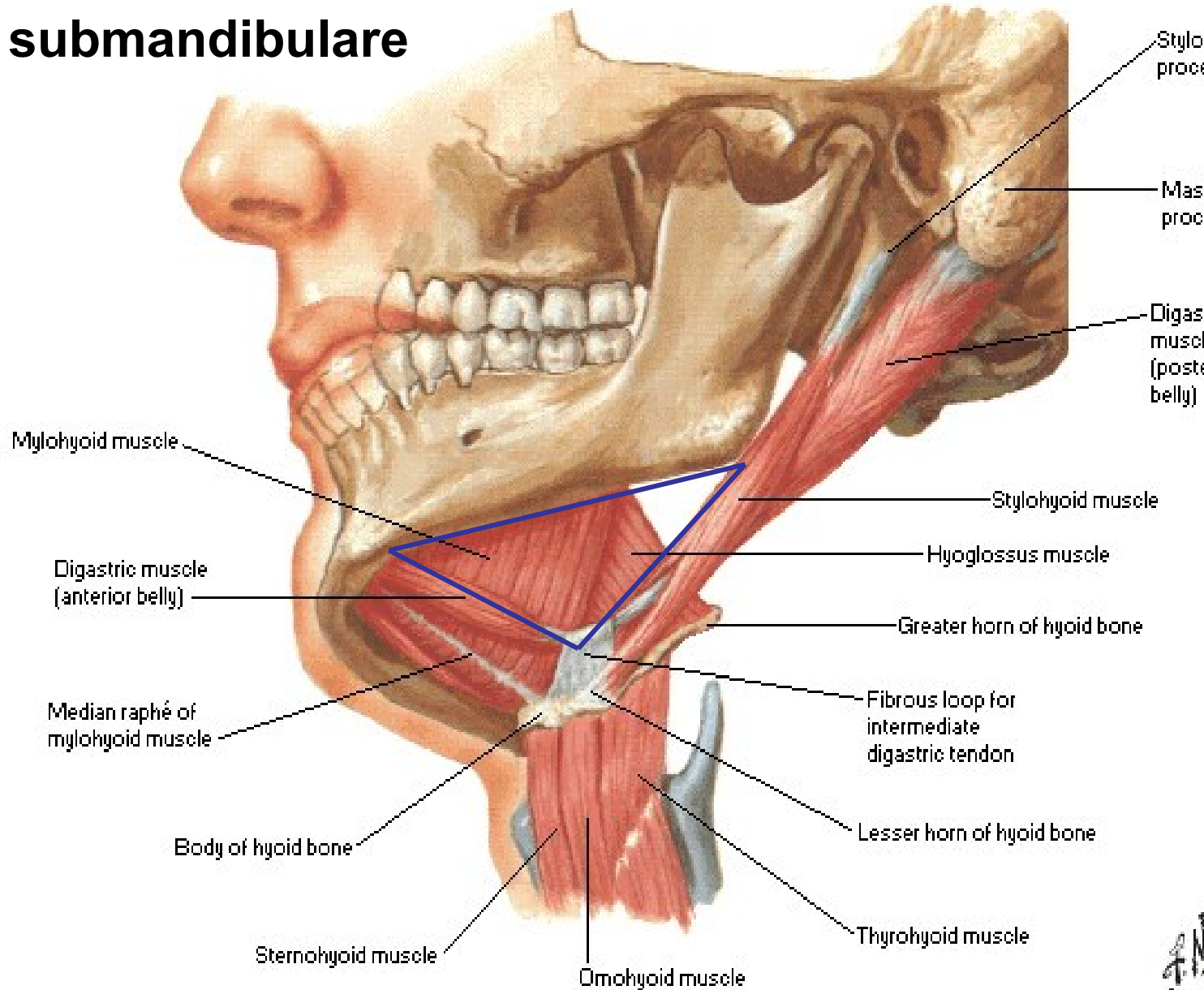
Sagittal Section



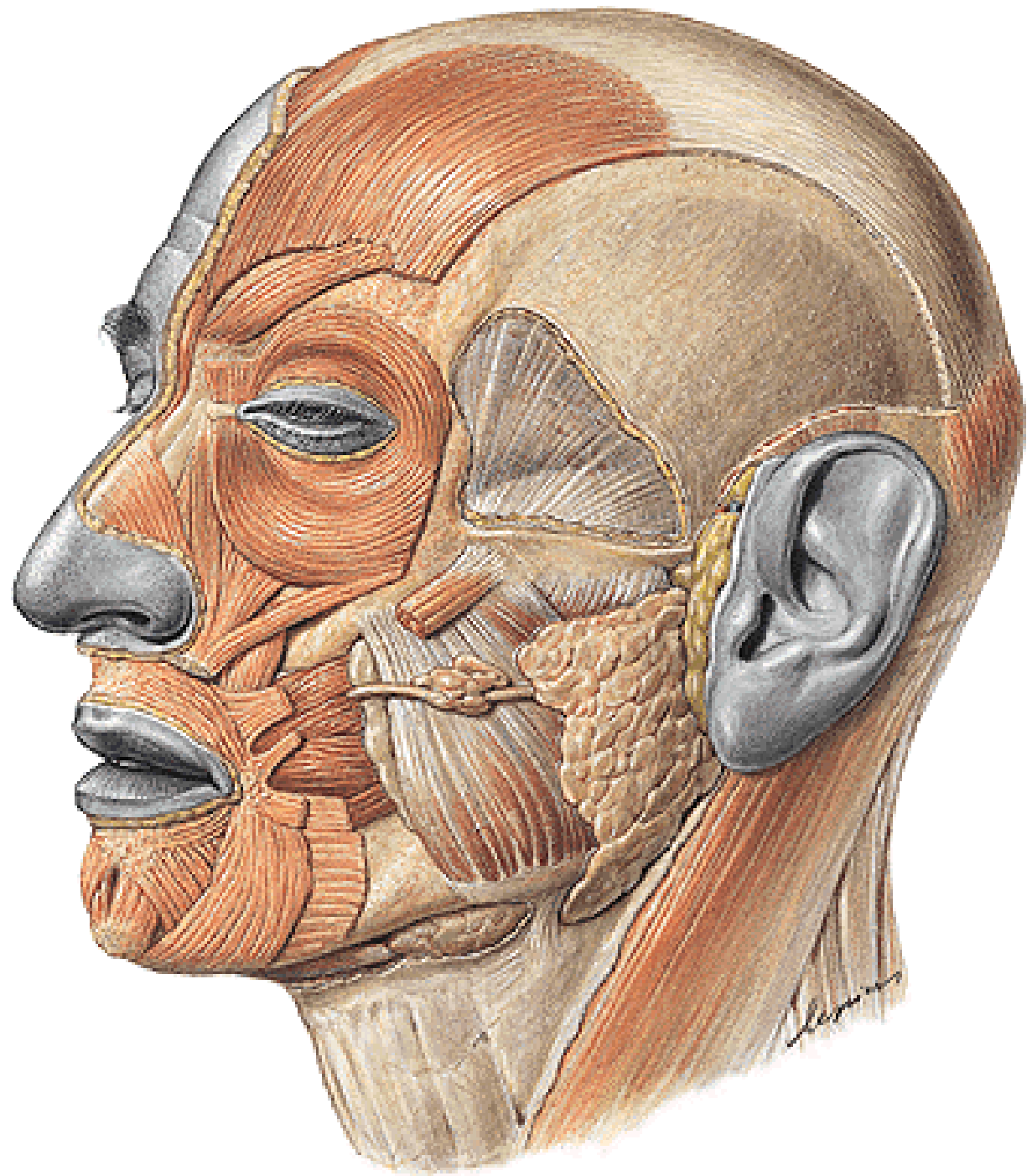
Floor of Mouth - Musculature

Lateral, Slightly Inferior View

Trigonum submandibulare

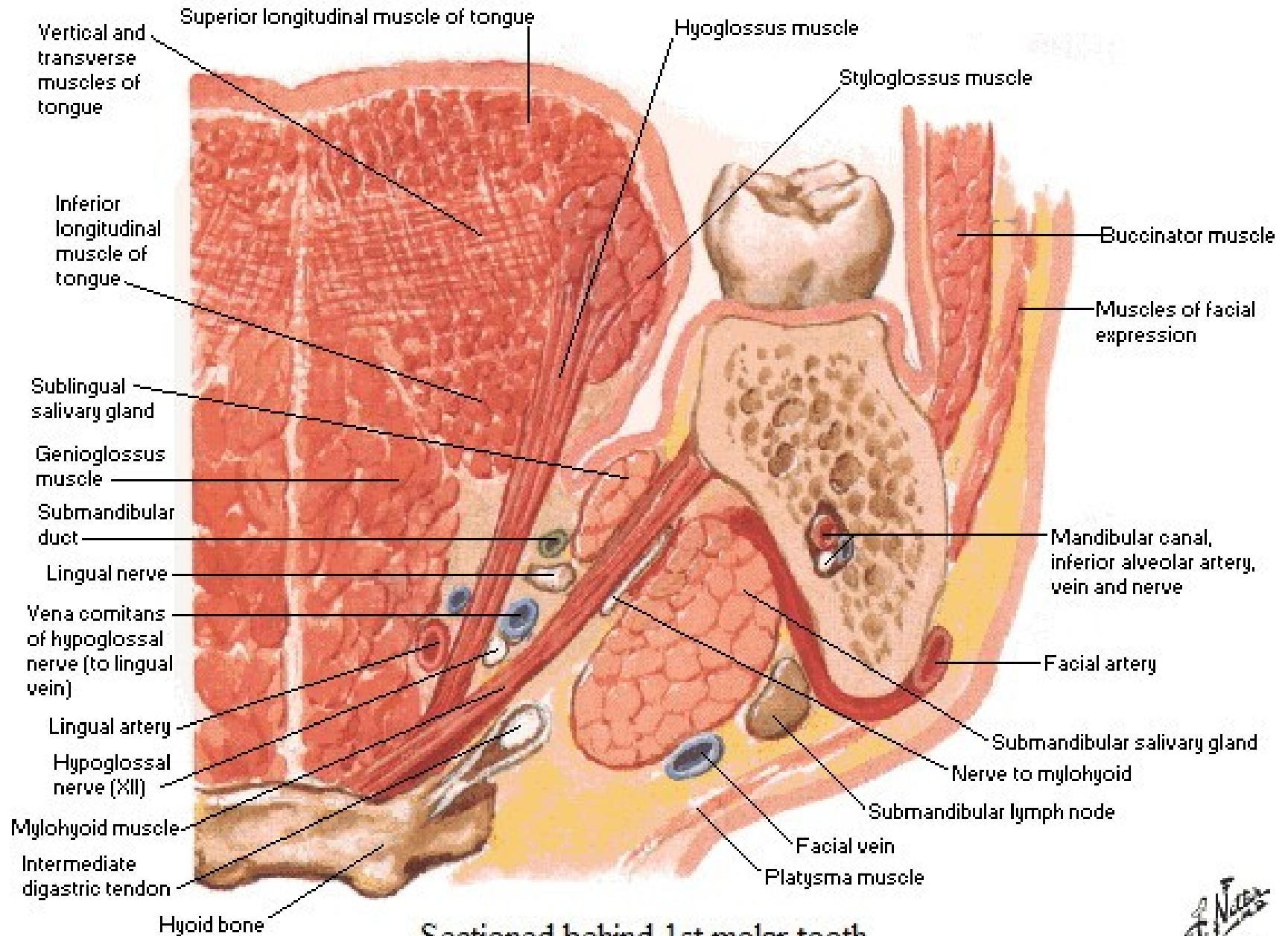


Tractus angularis



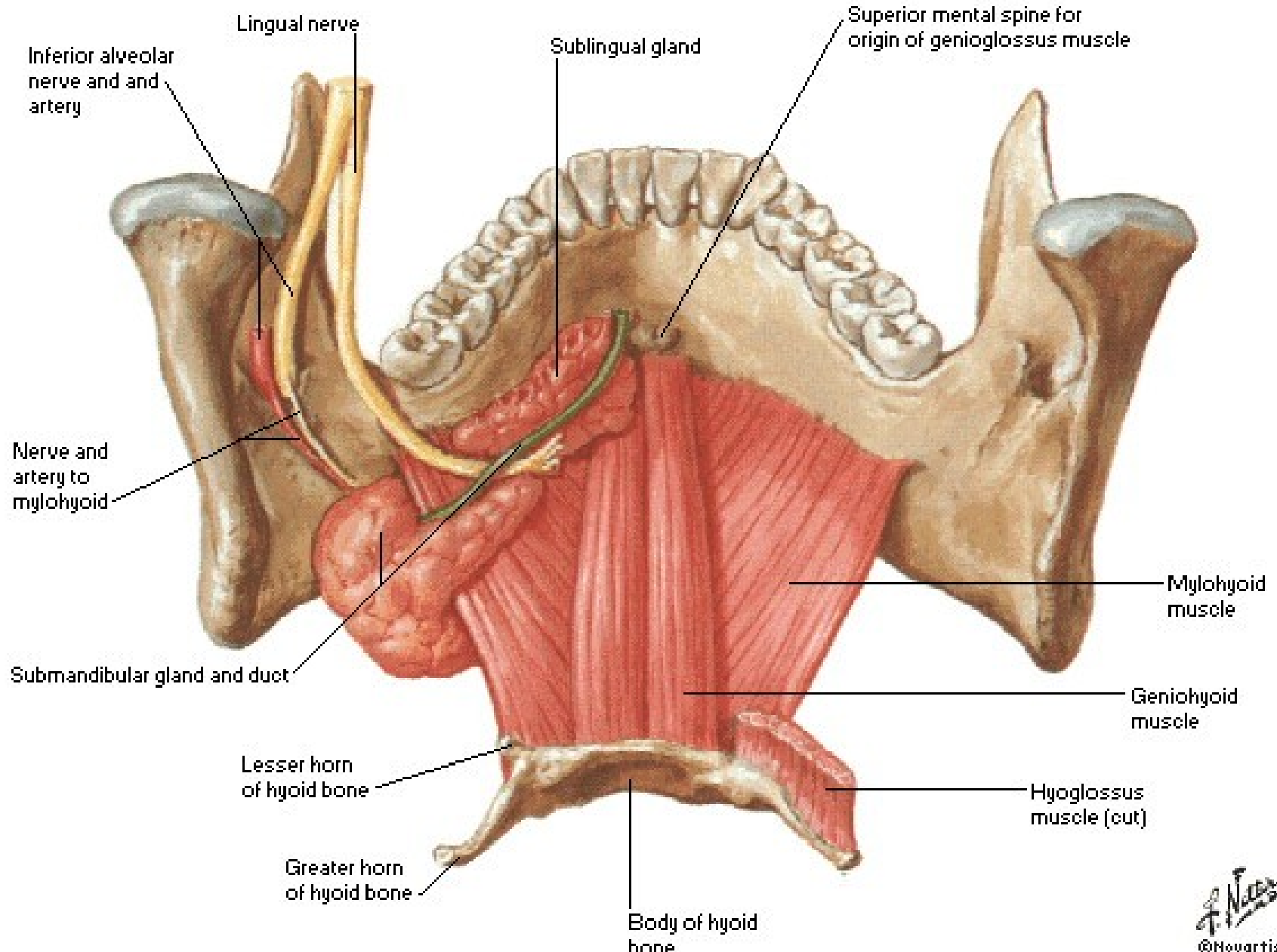
Tongue and Mouth

Frontal Section - Anterior View

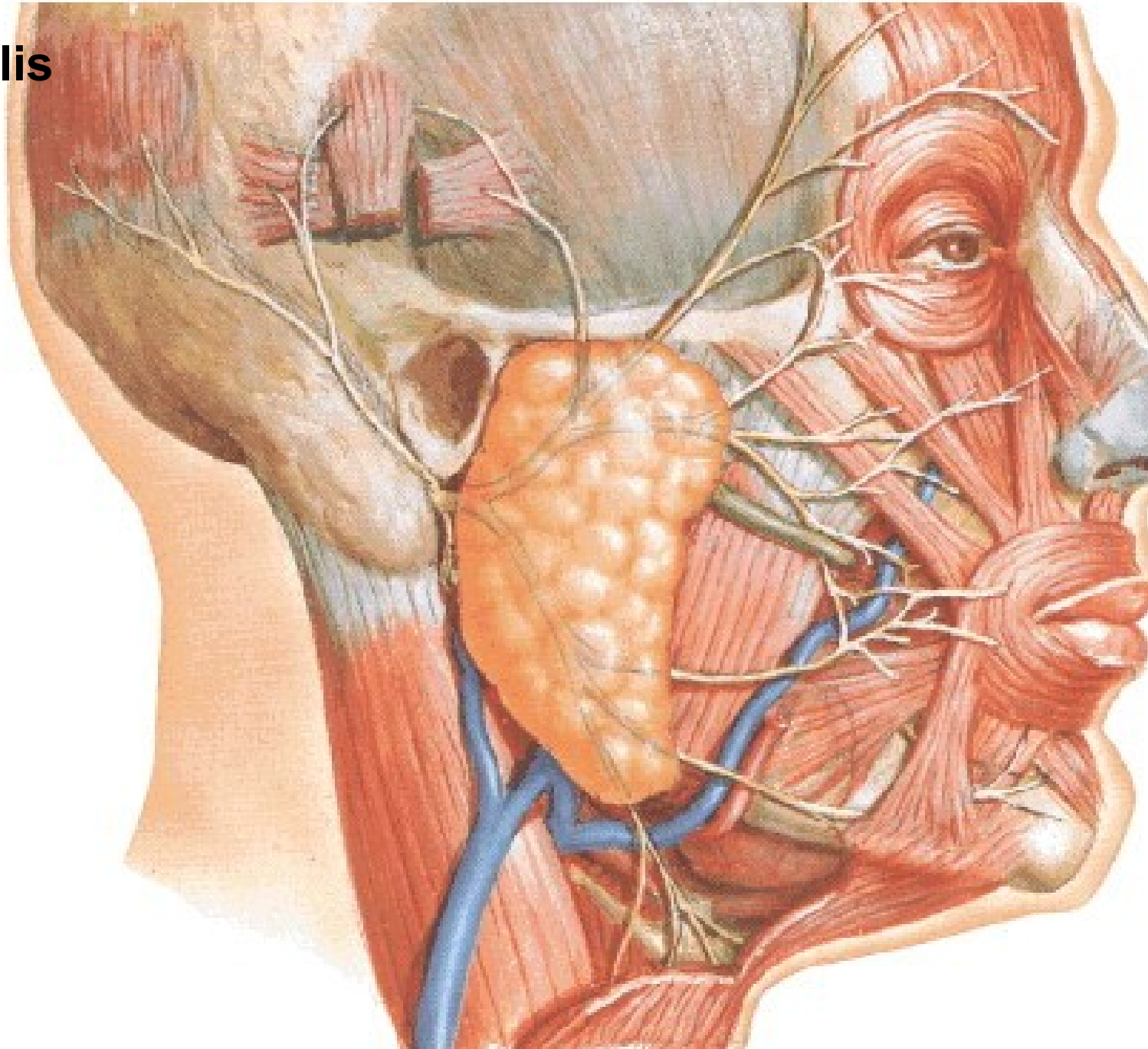


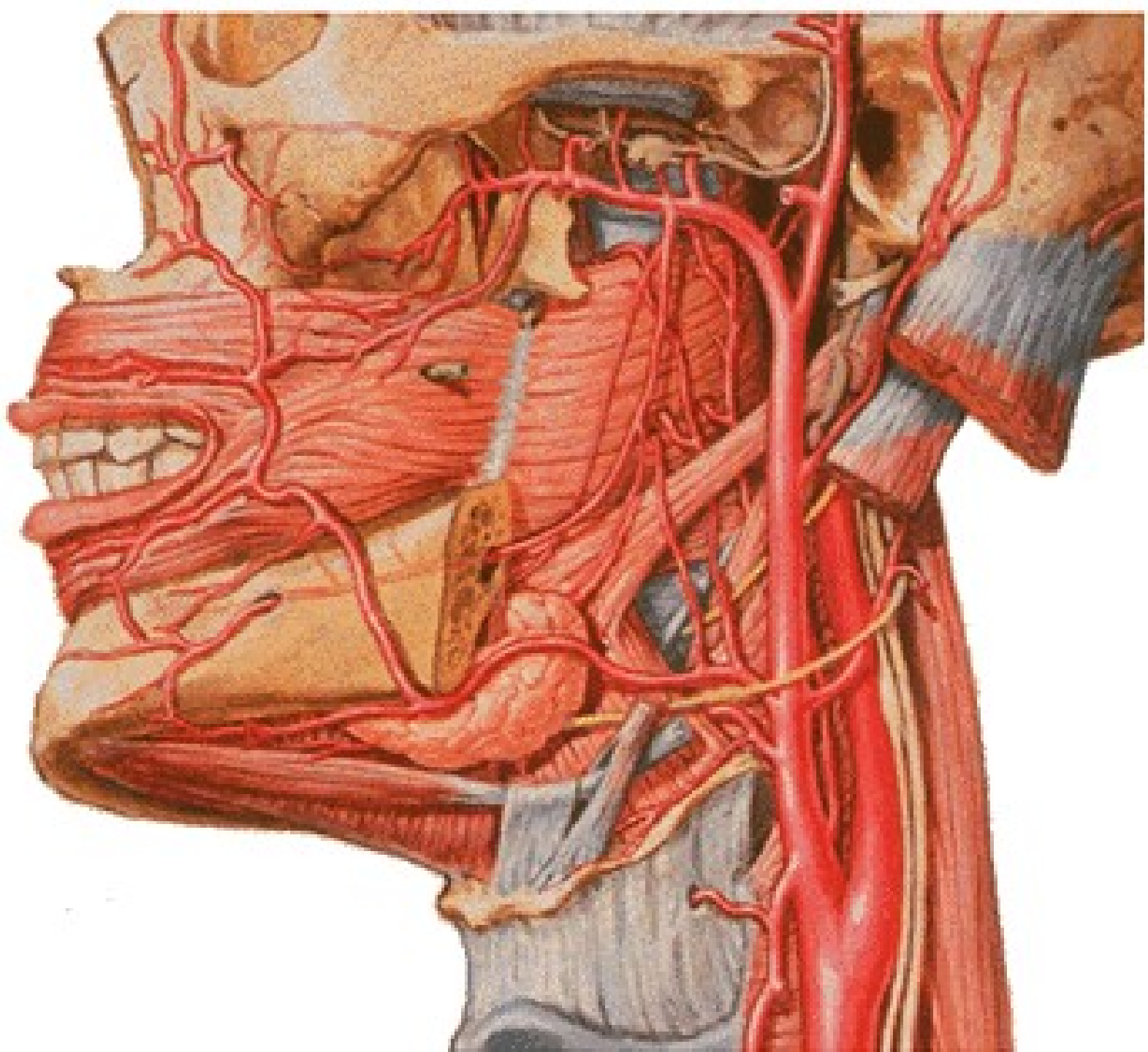
Floor of Mouth - Musculature

Posterosuperior View

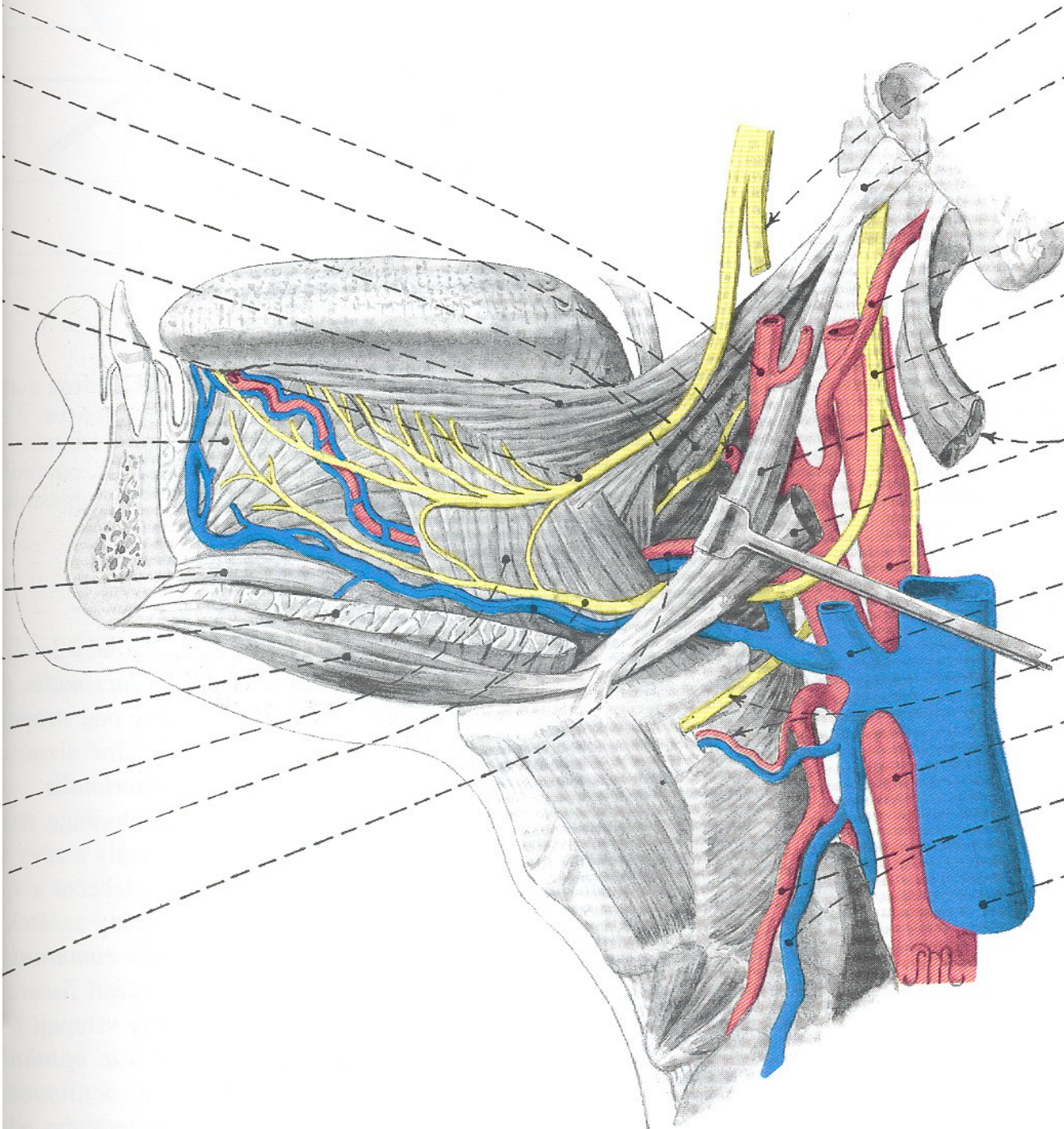


A. et v. facialis



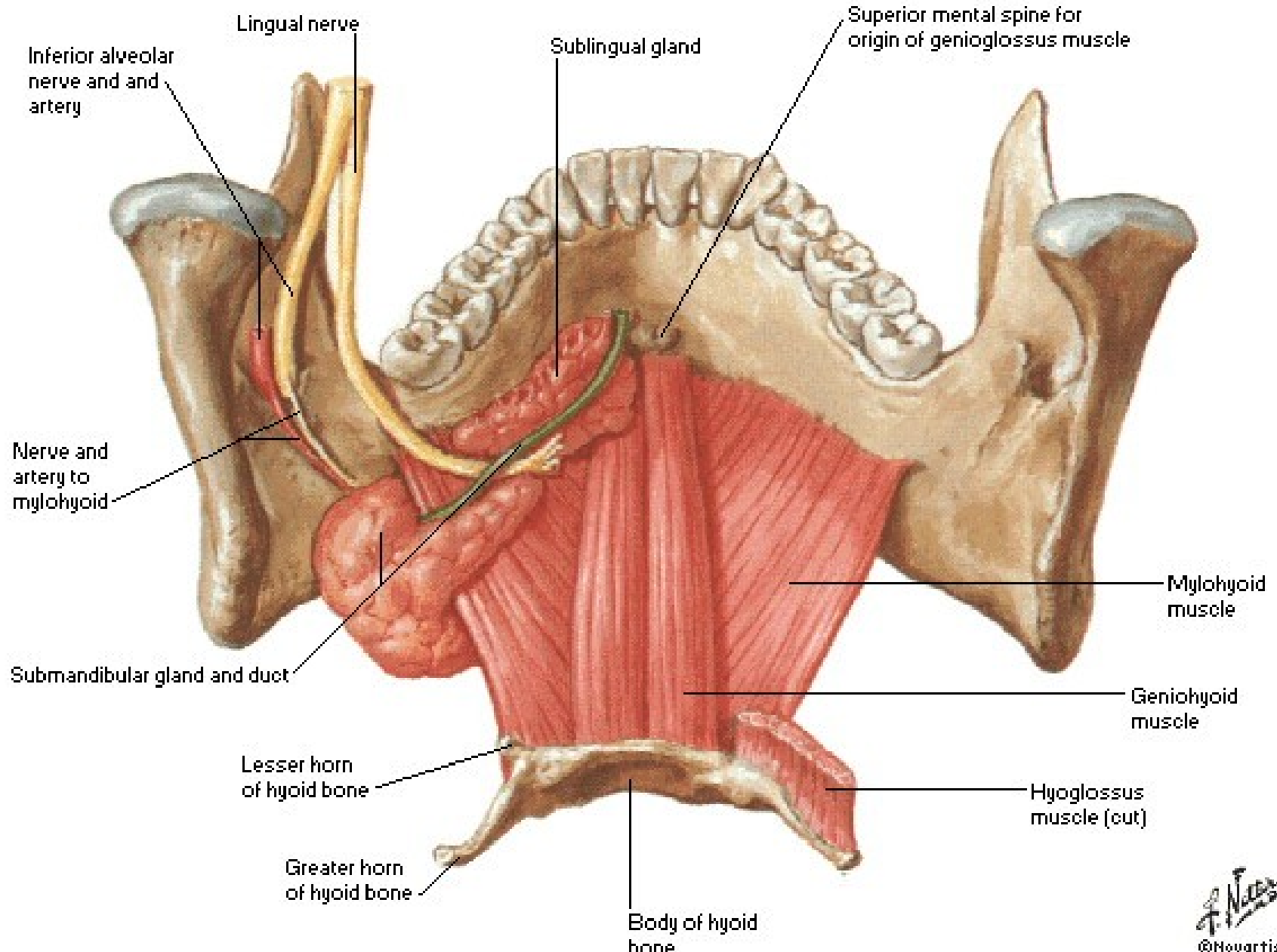


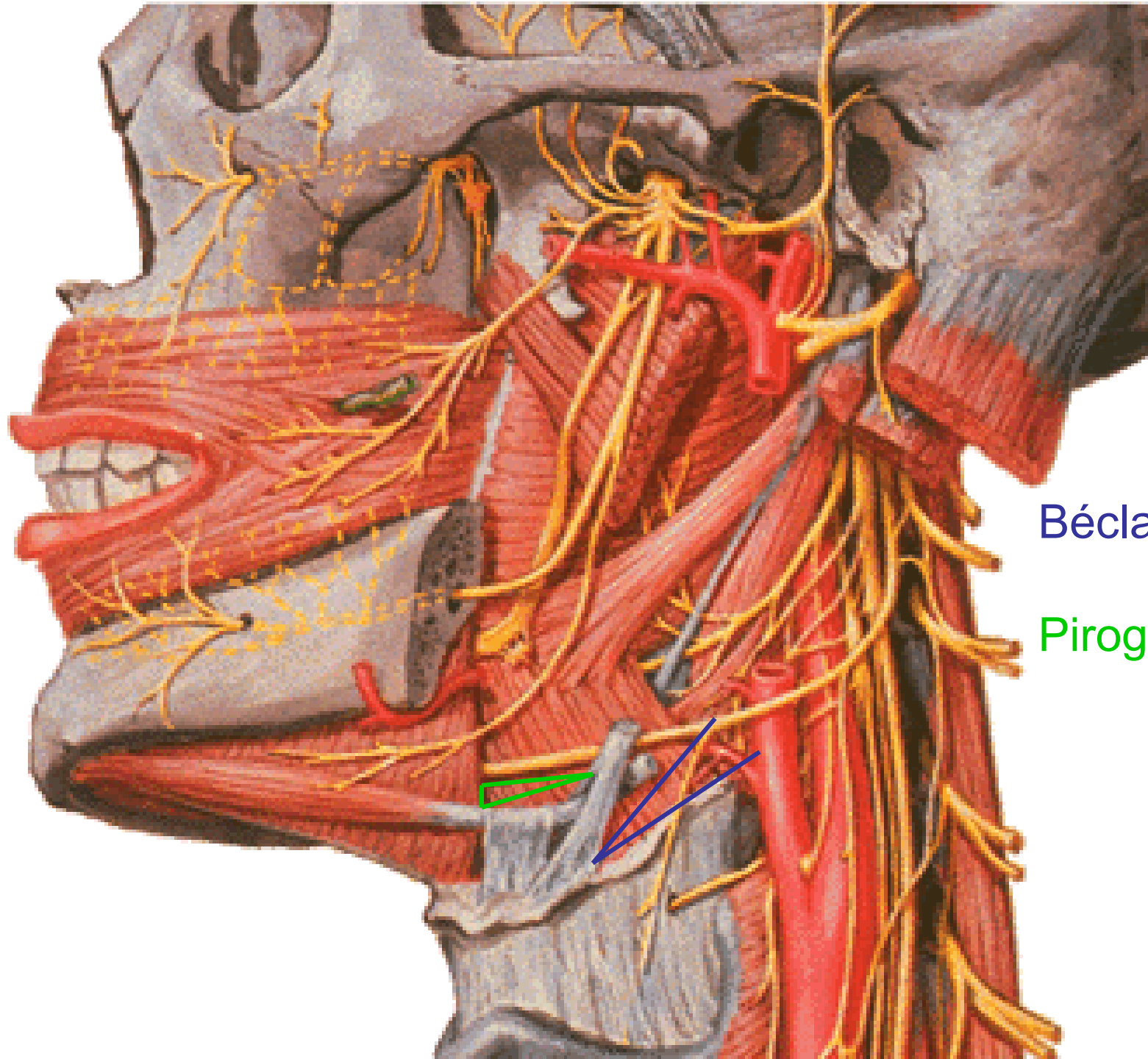
N. hypoglossus
N. lingualis



Floor of Mouth - Musculature

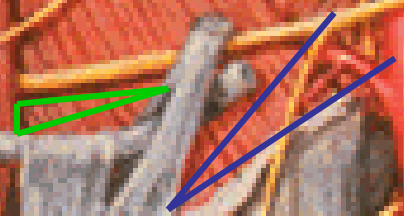
Posterosuperior View





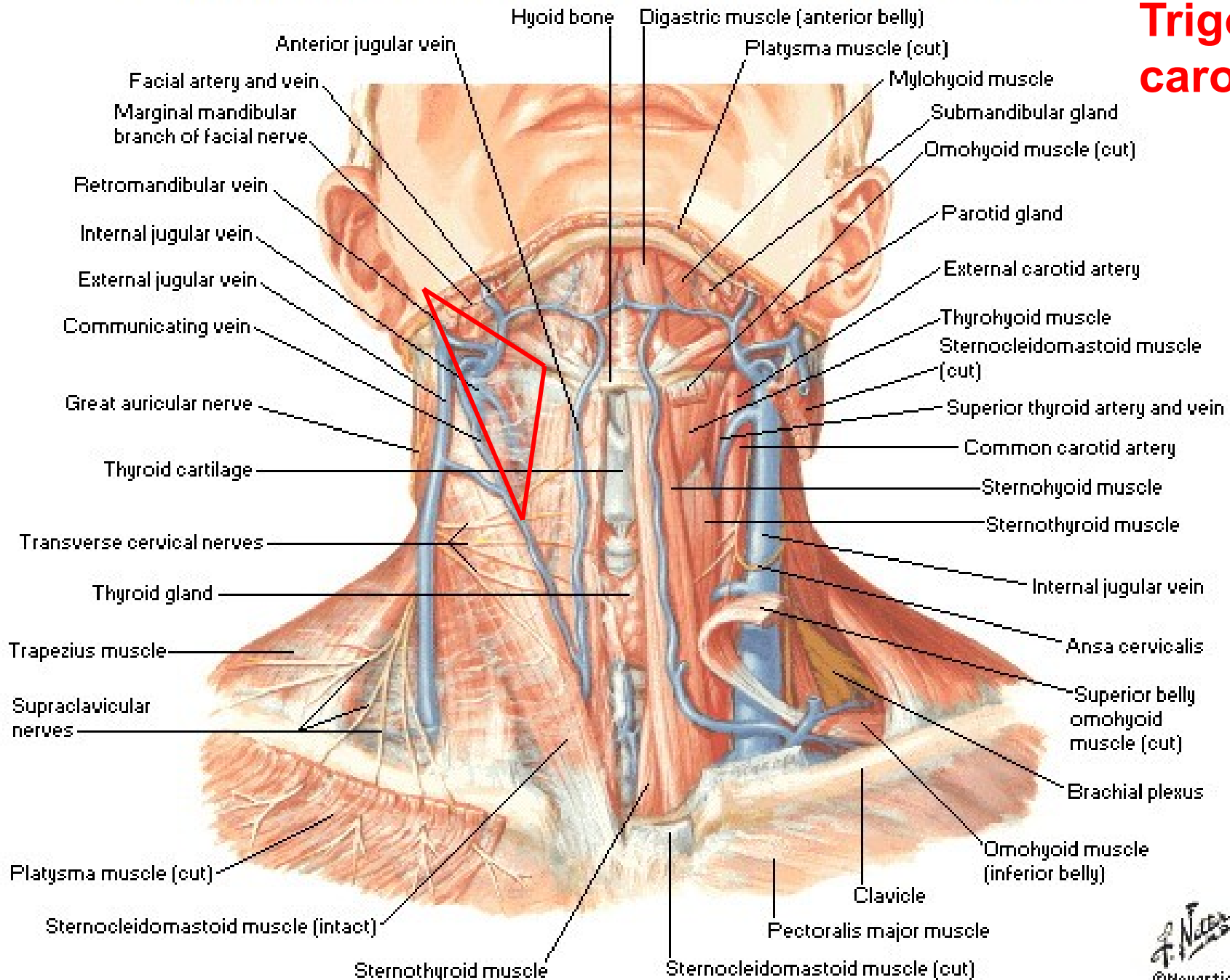
Béclard's angle

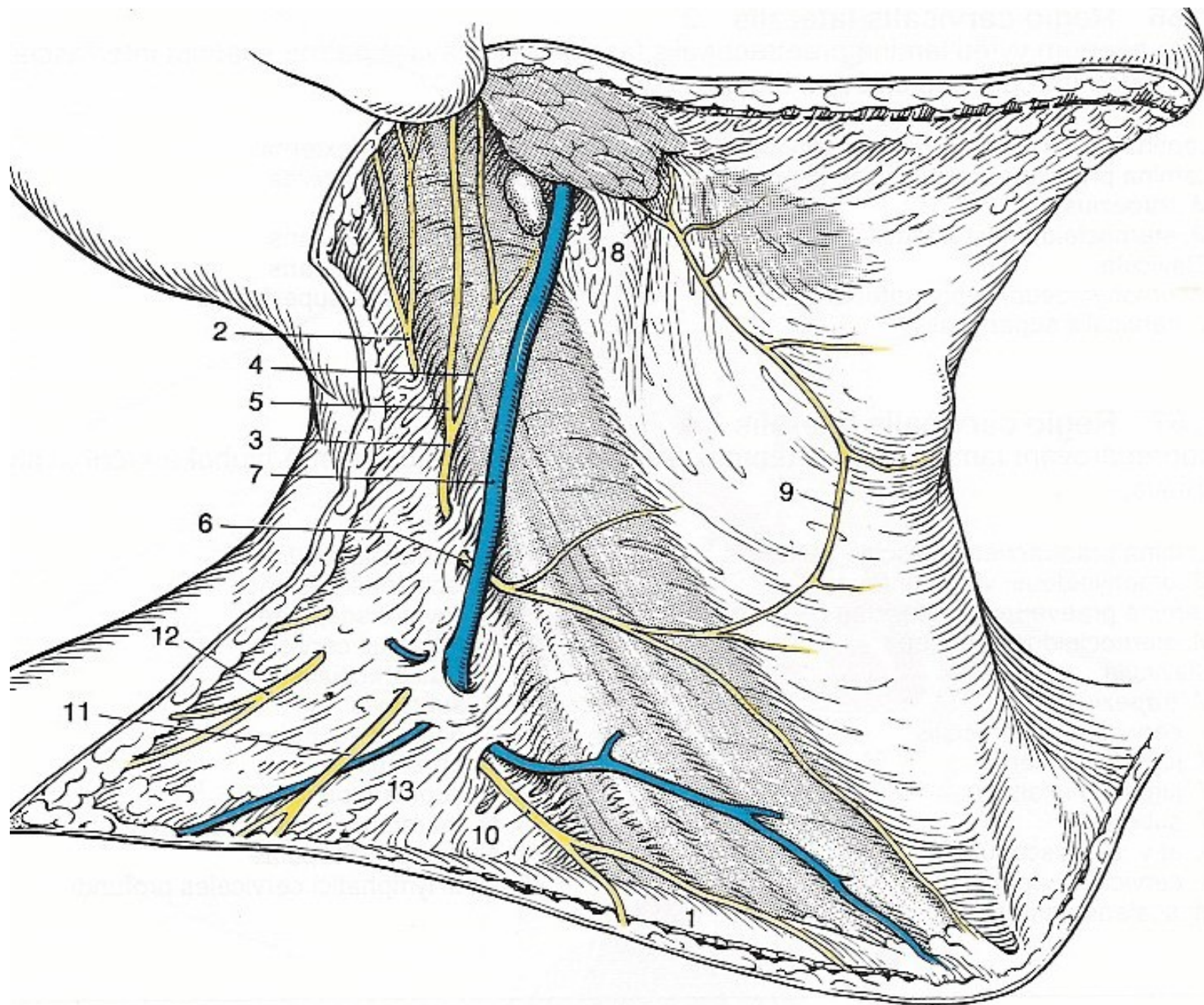
Pirogov's tringle

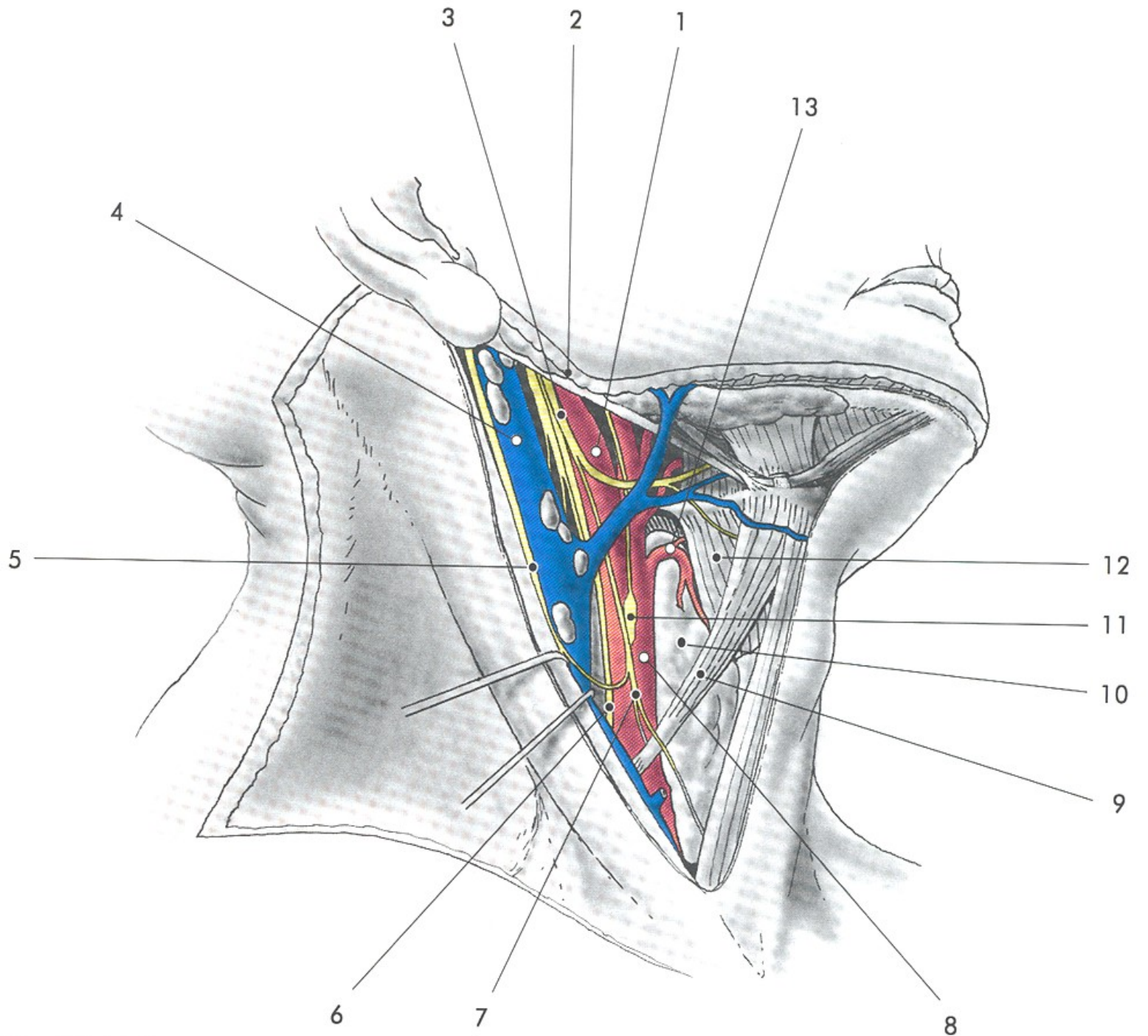


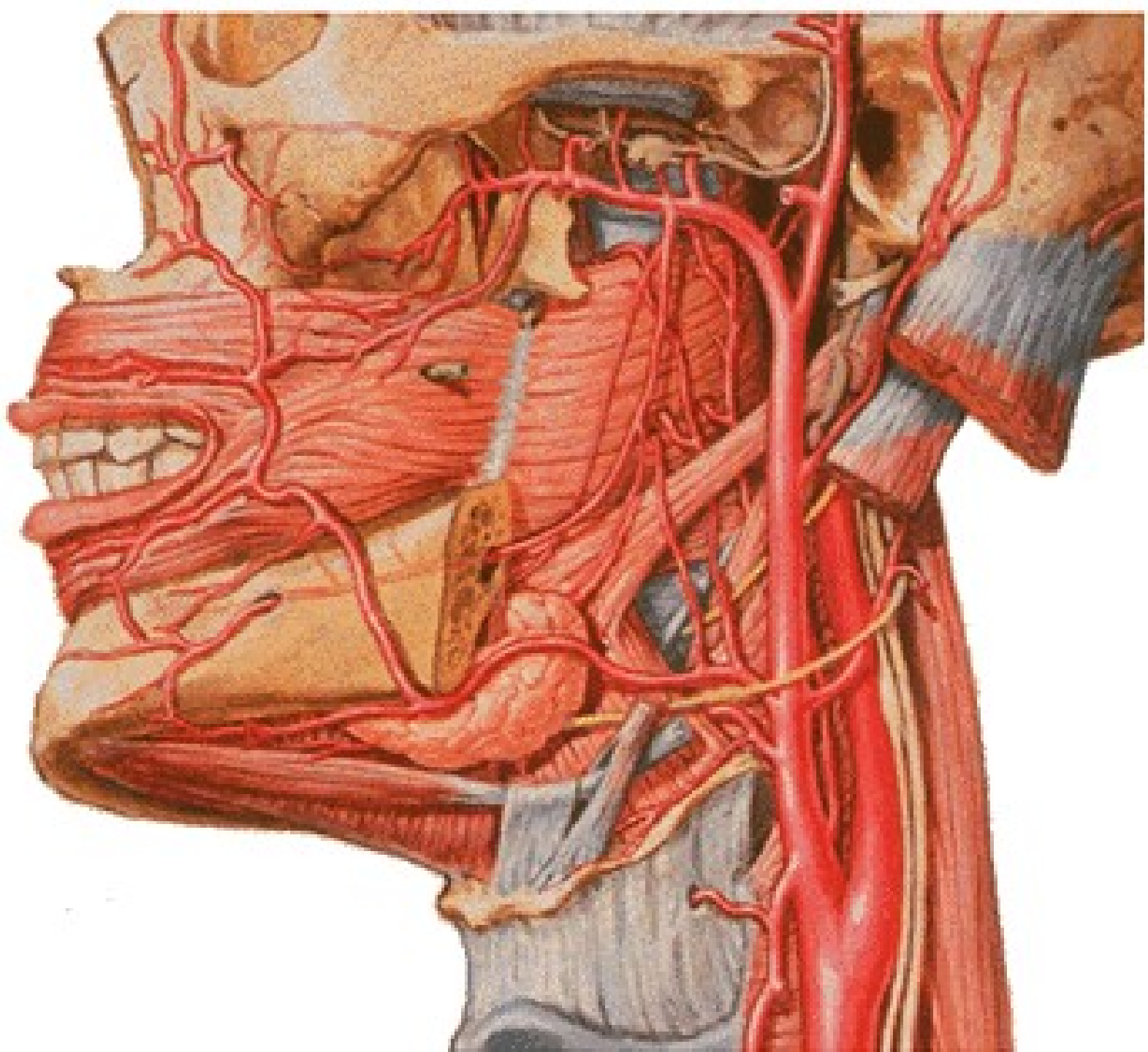
Superficial Veins and Cutaneous Nerves of Neck

Trigonum caroticum

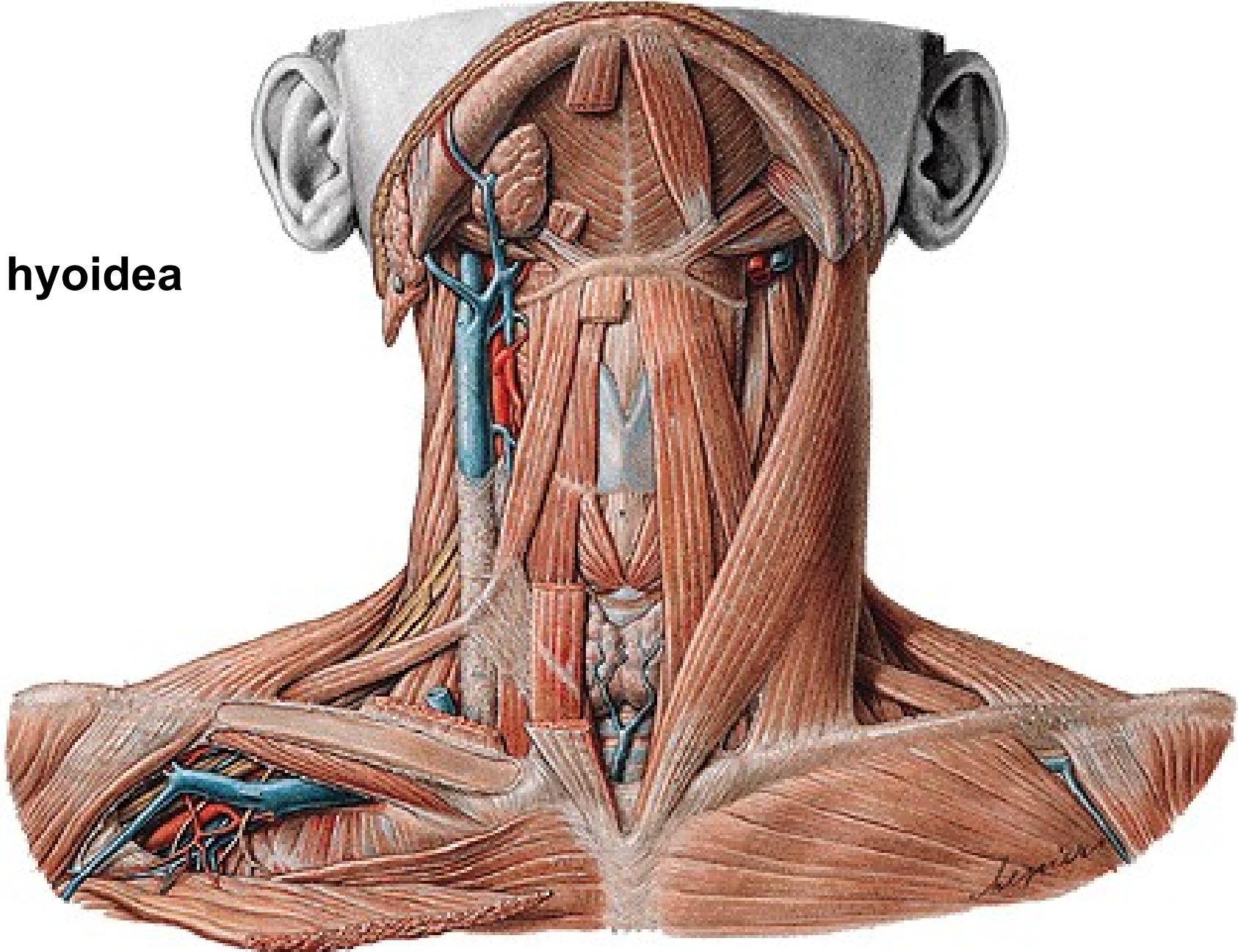




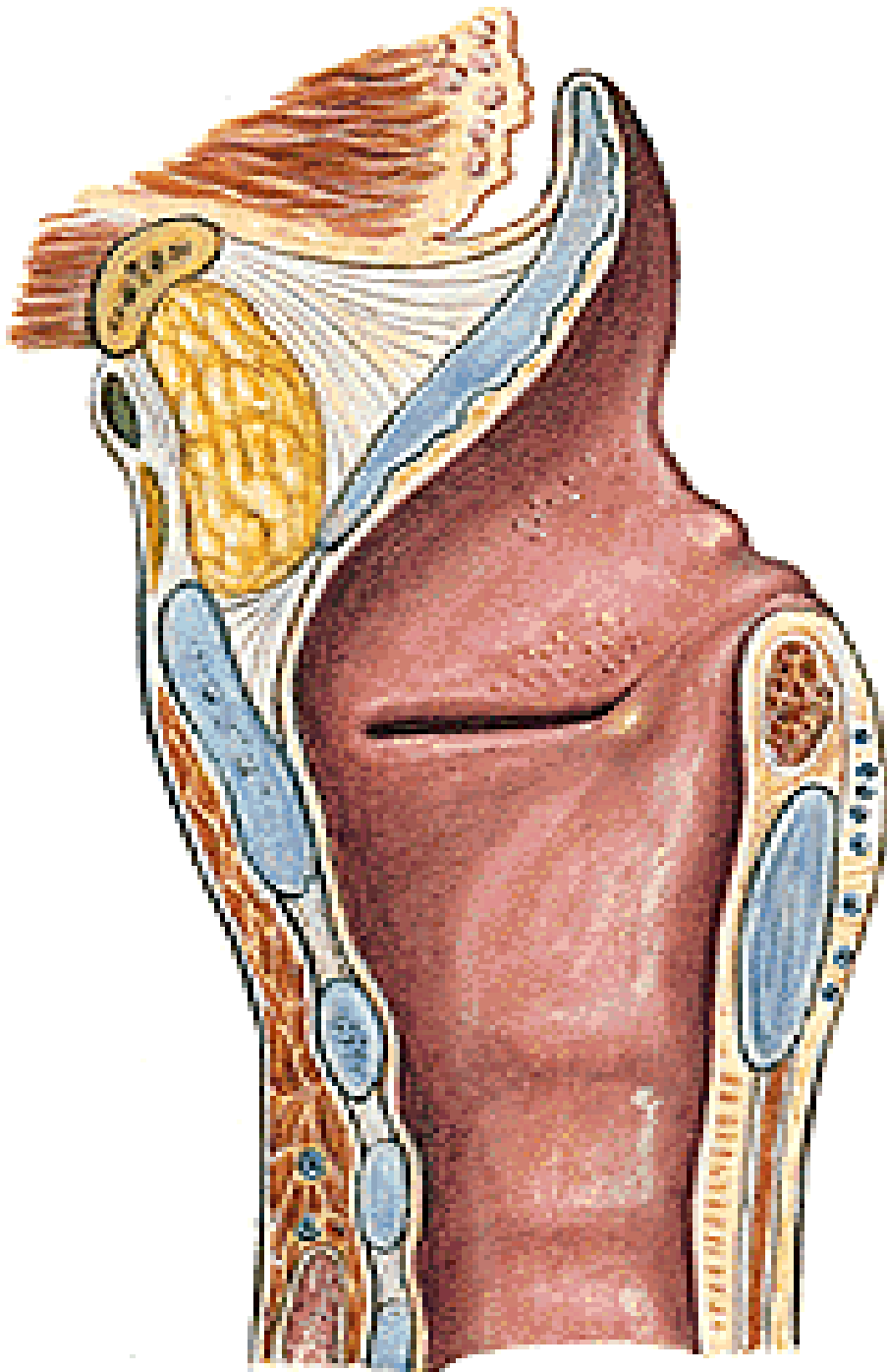




Regio hyoidea

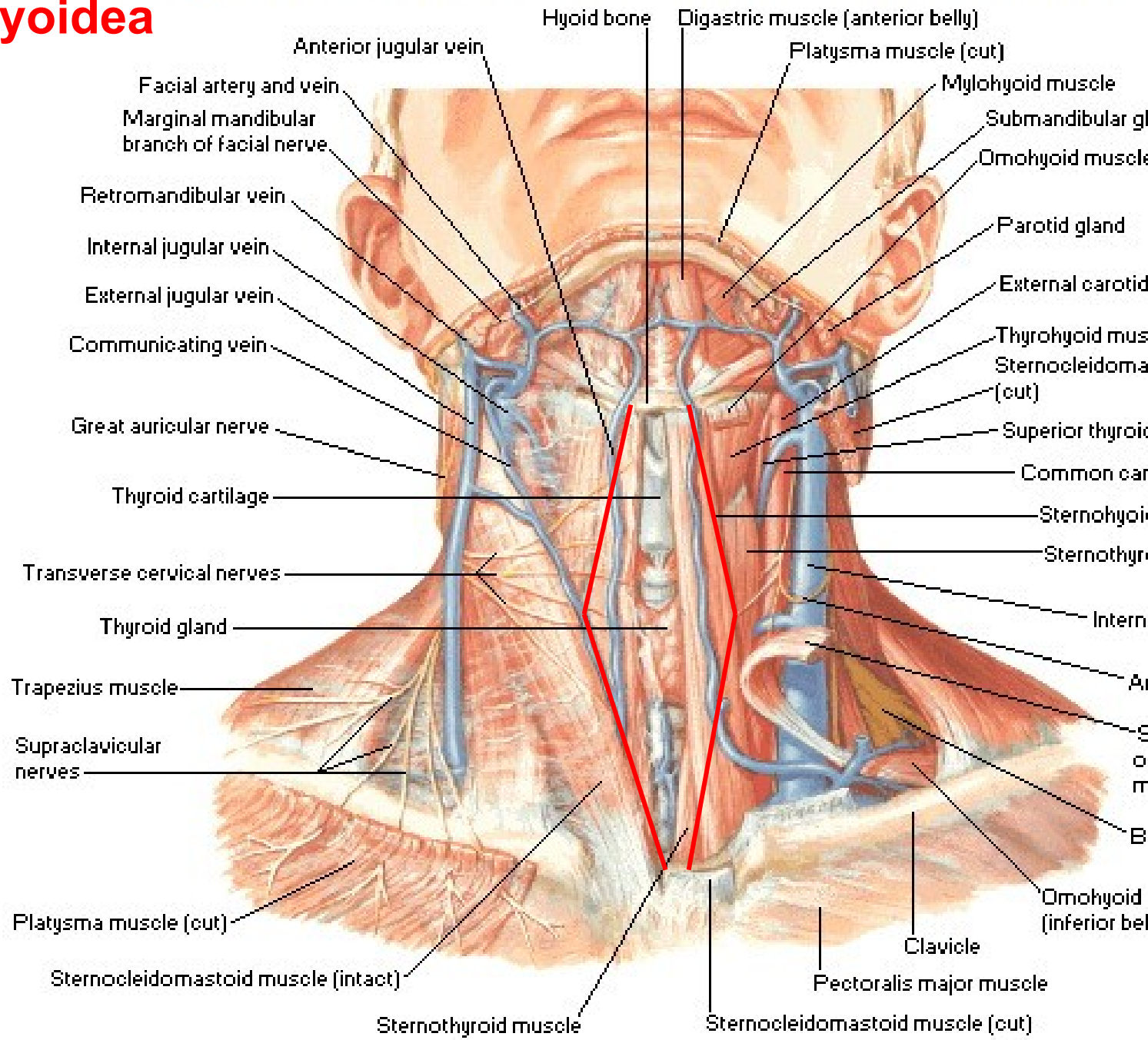


Spatium preepiglotticum



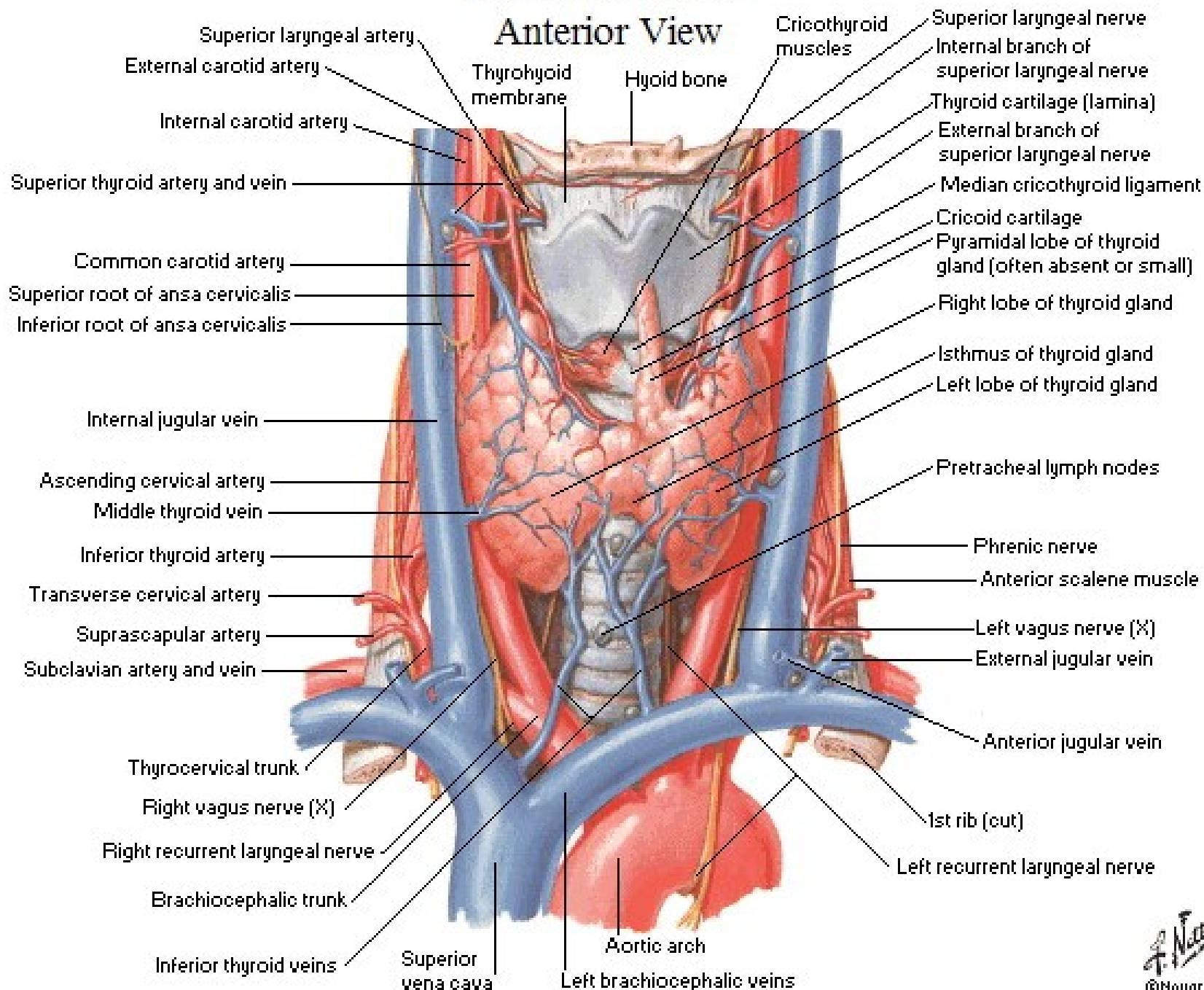
Superficial Veins and Cutaneous Nerves of Neck

Regio infrahyoidea



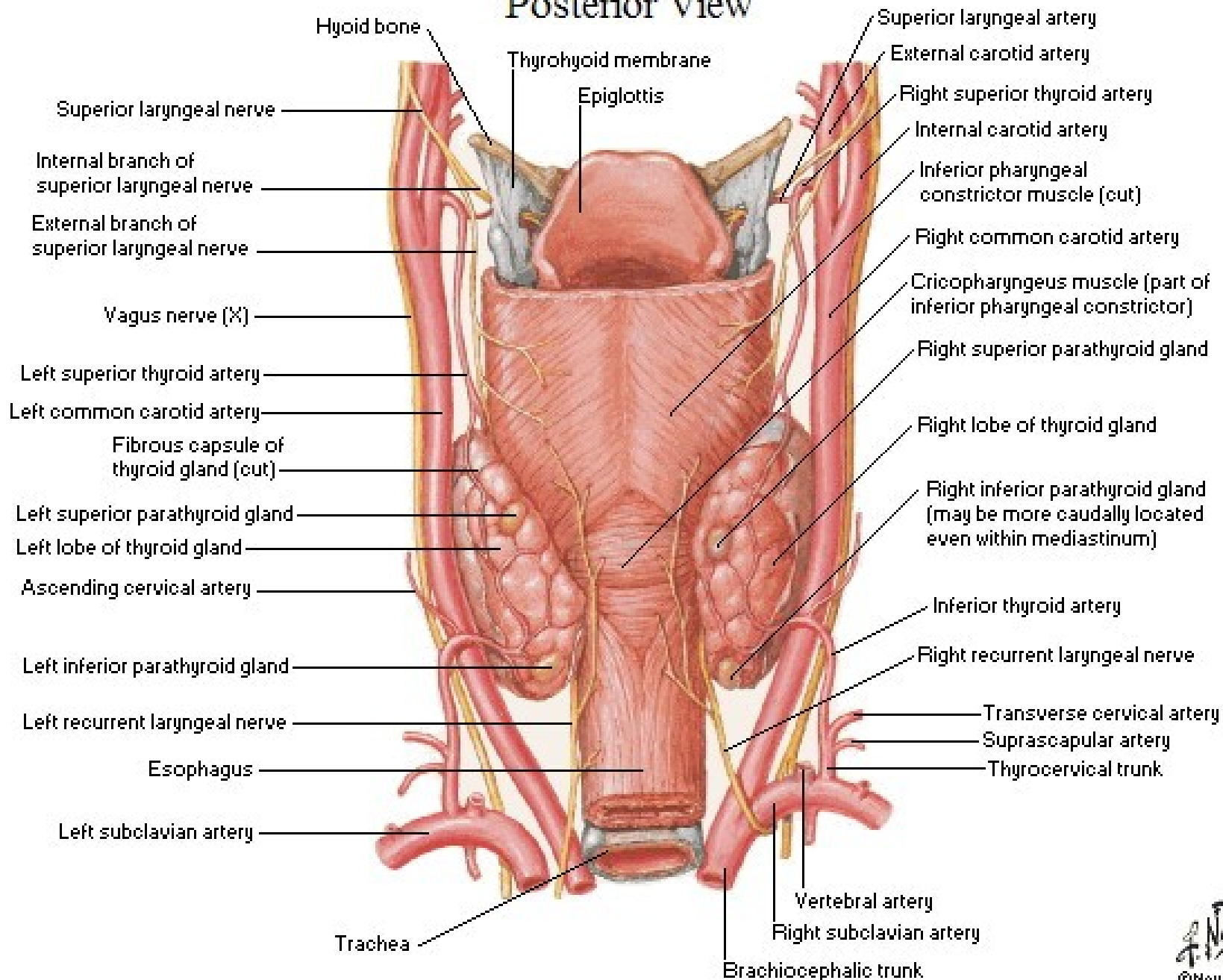
Thyroid Gland

Anterior View



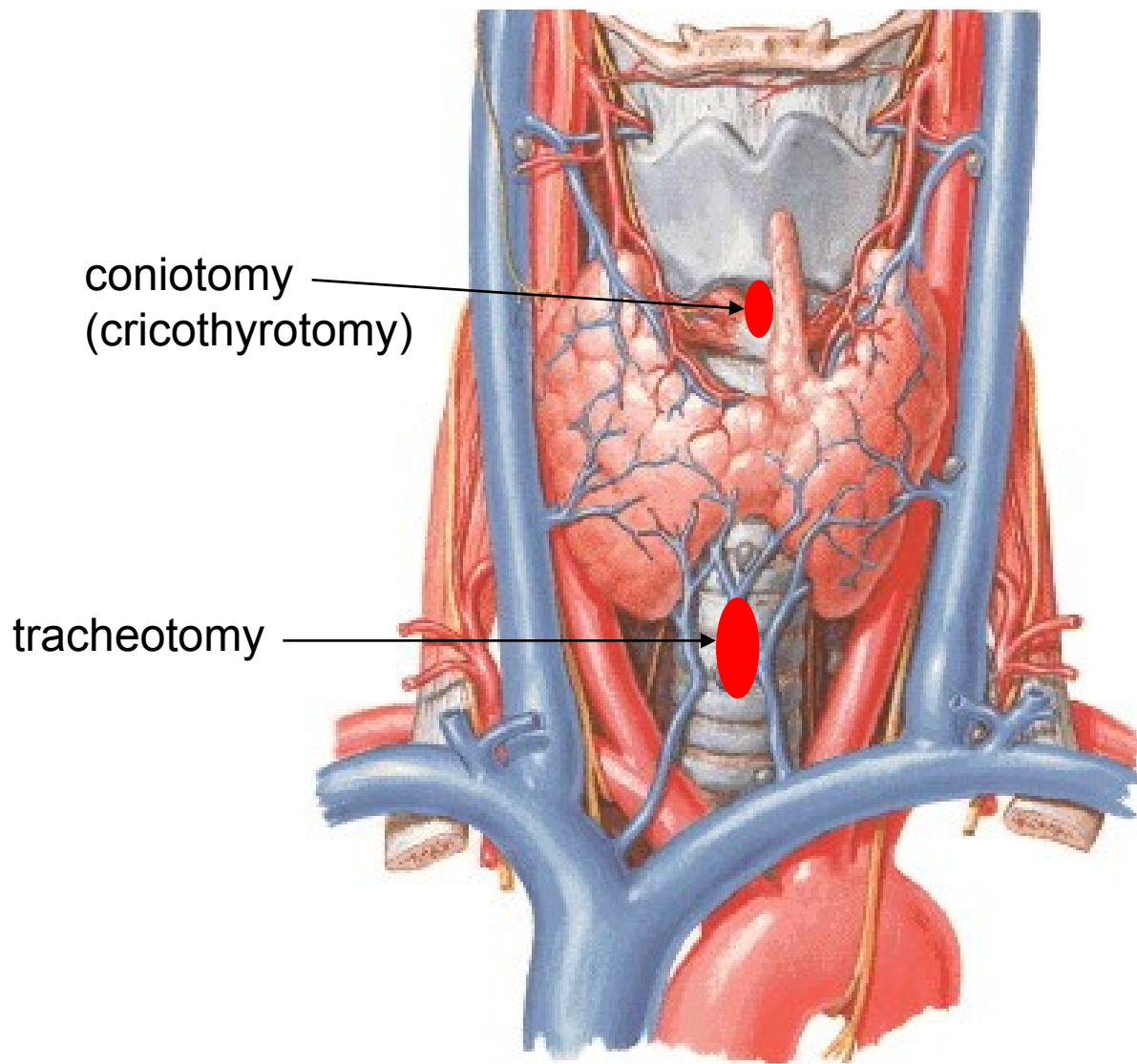
Parathyroid Glands

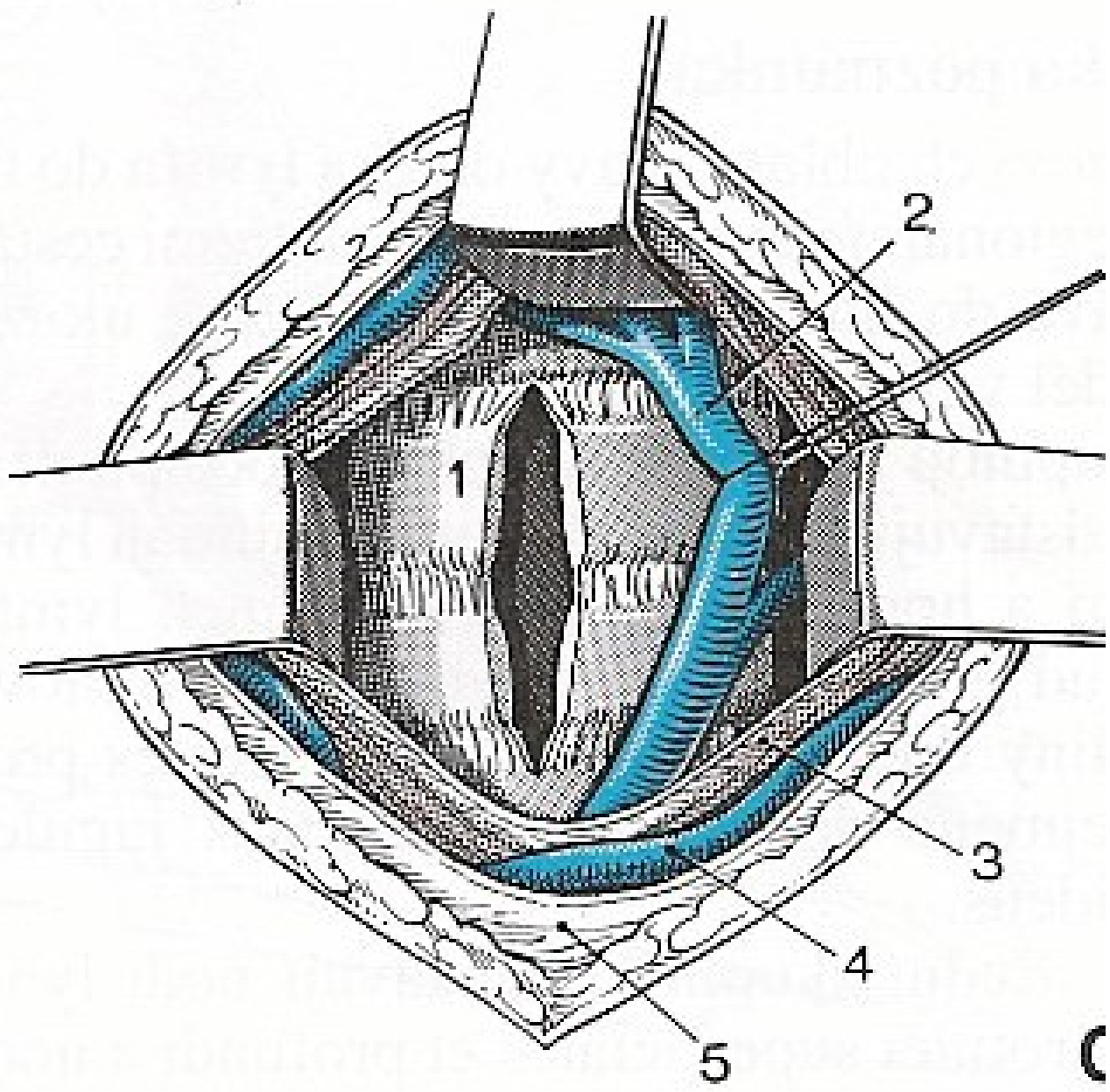
Posterior View



Thyroid Gland

Anterior View



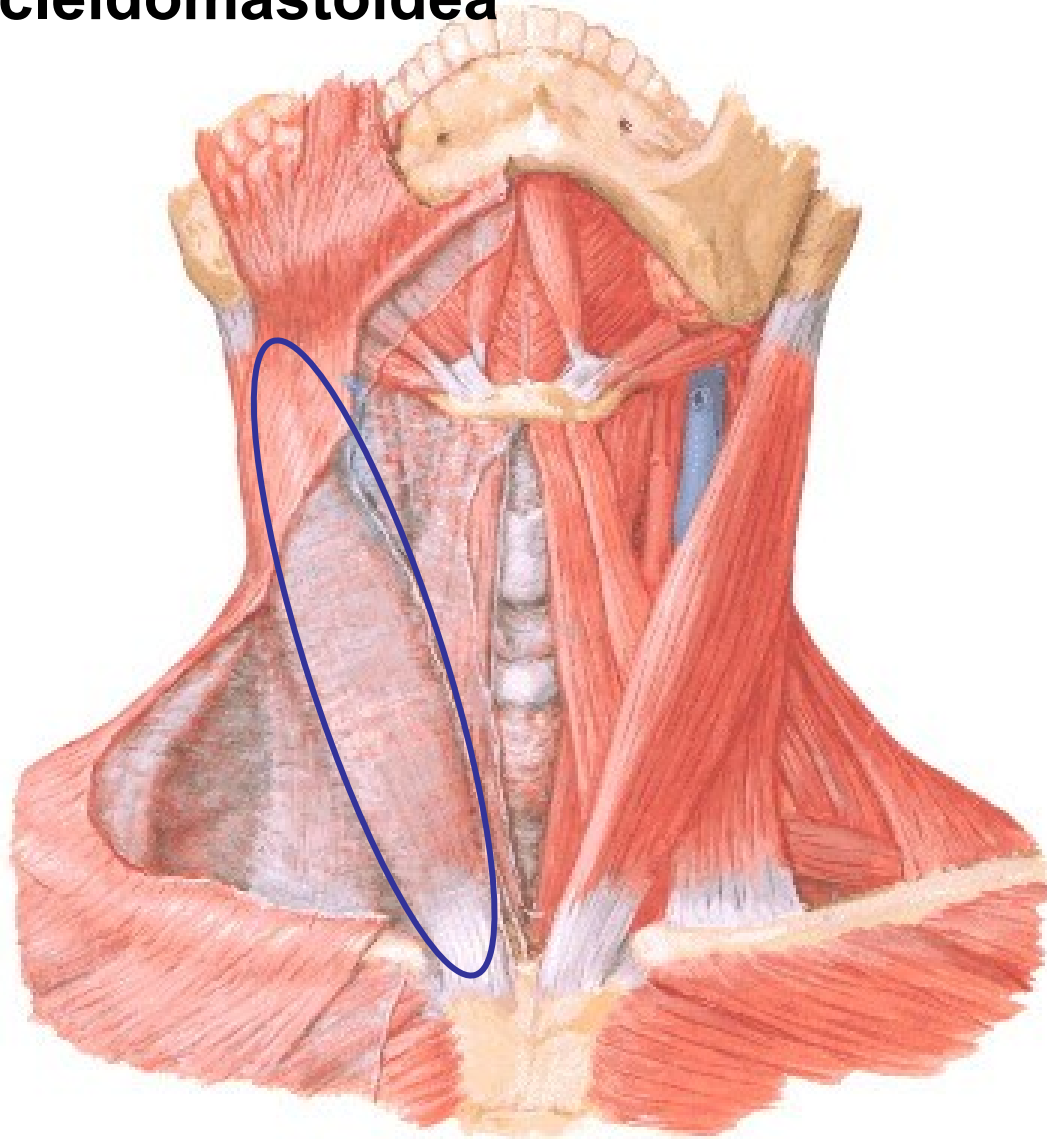


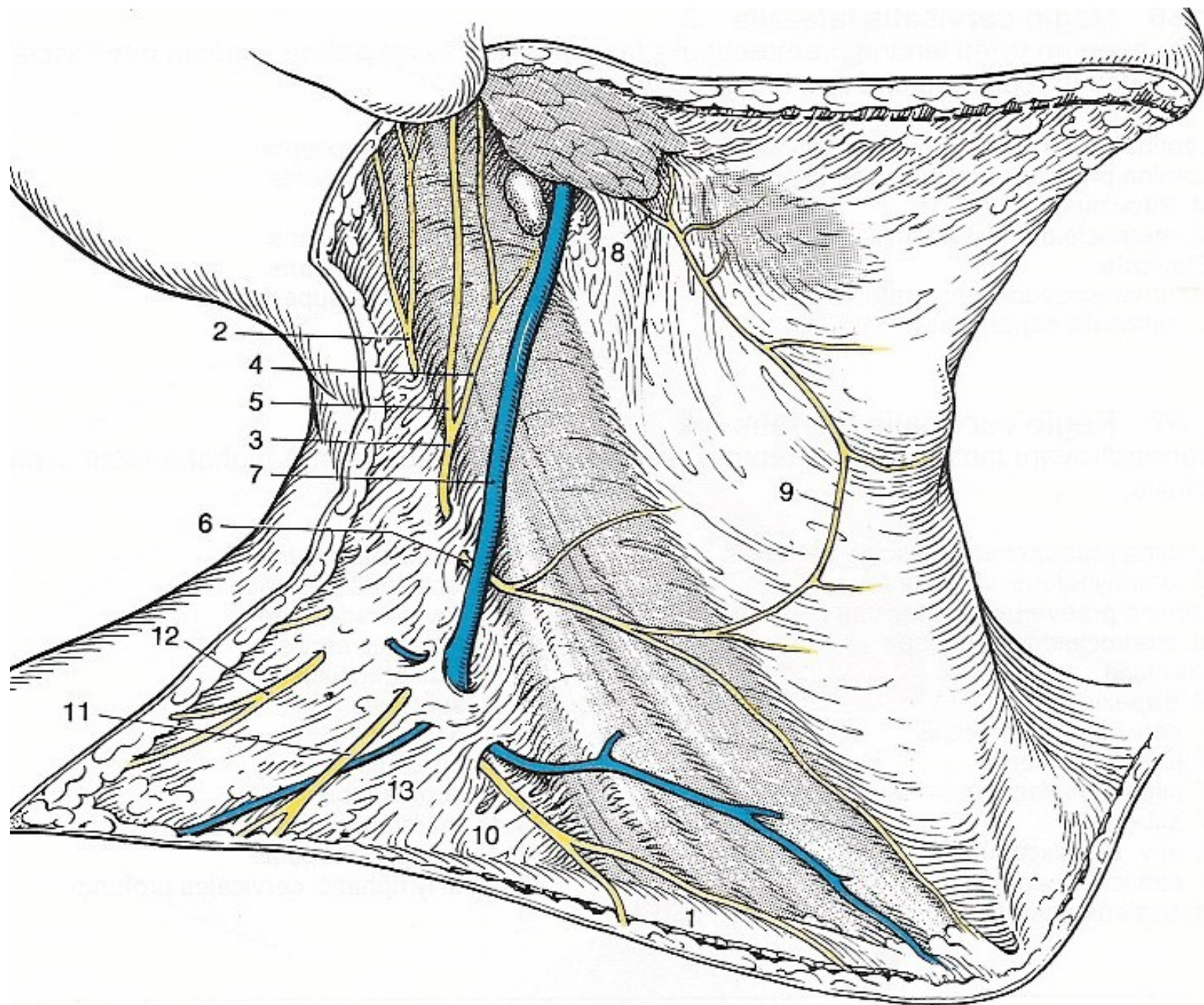
(

Muscles of Neck

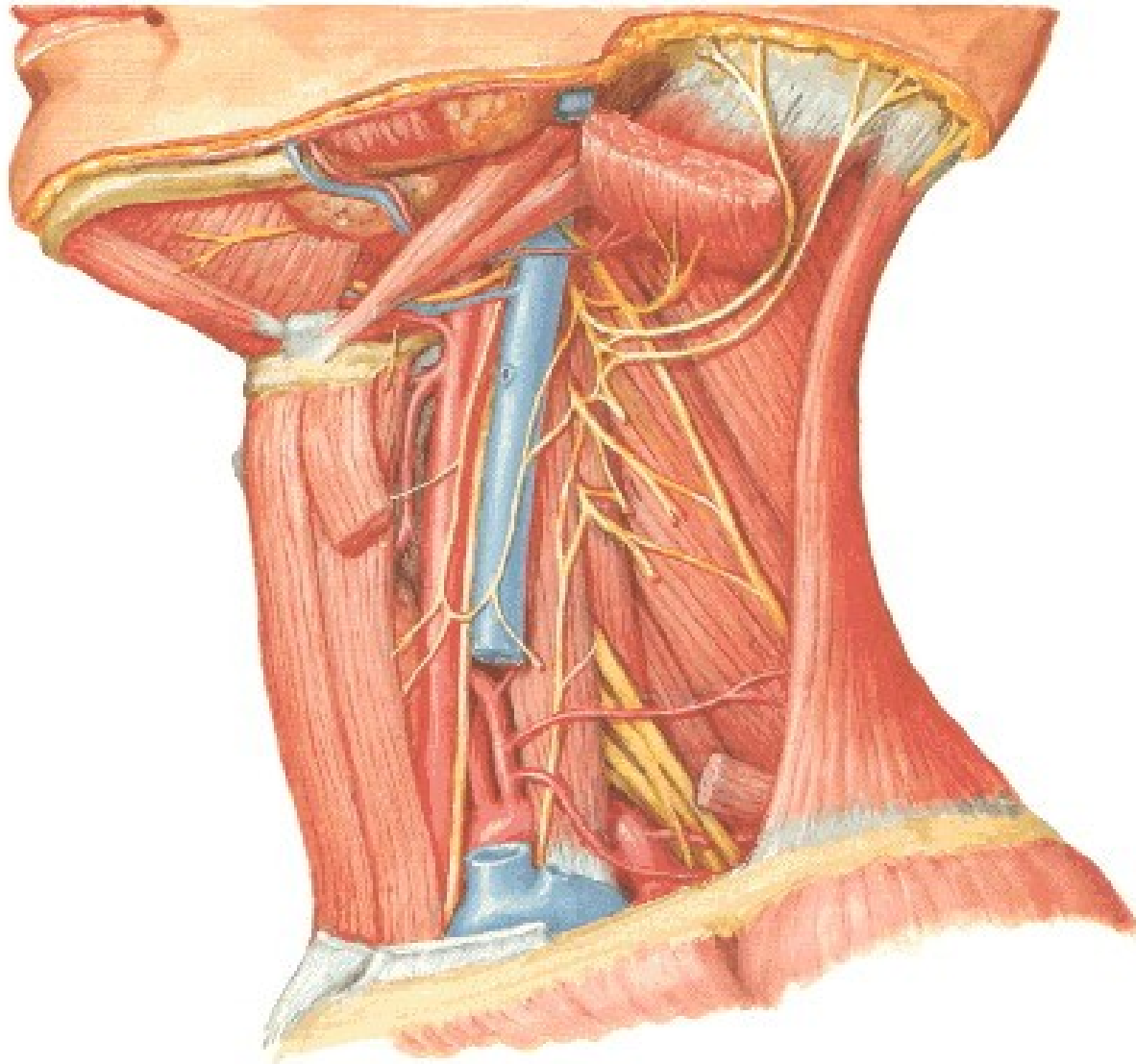
Anterior View

Regio sternocleidomastoidea

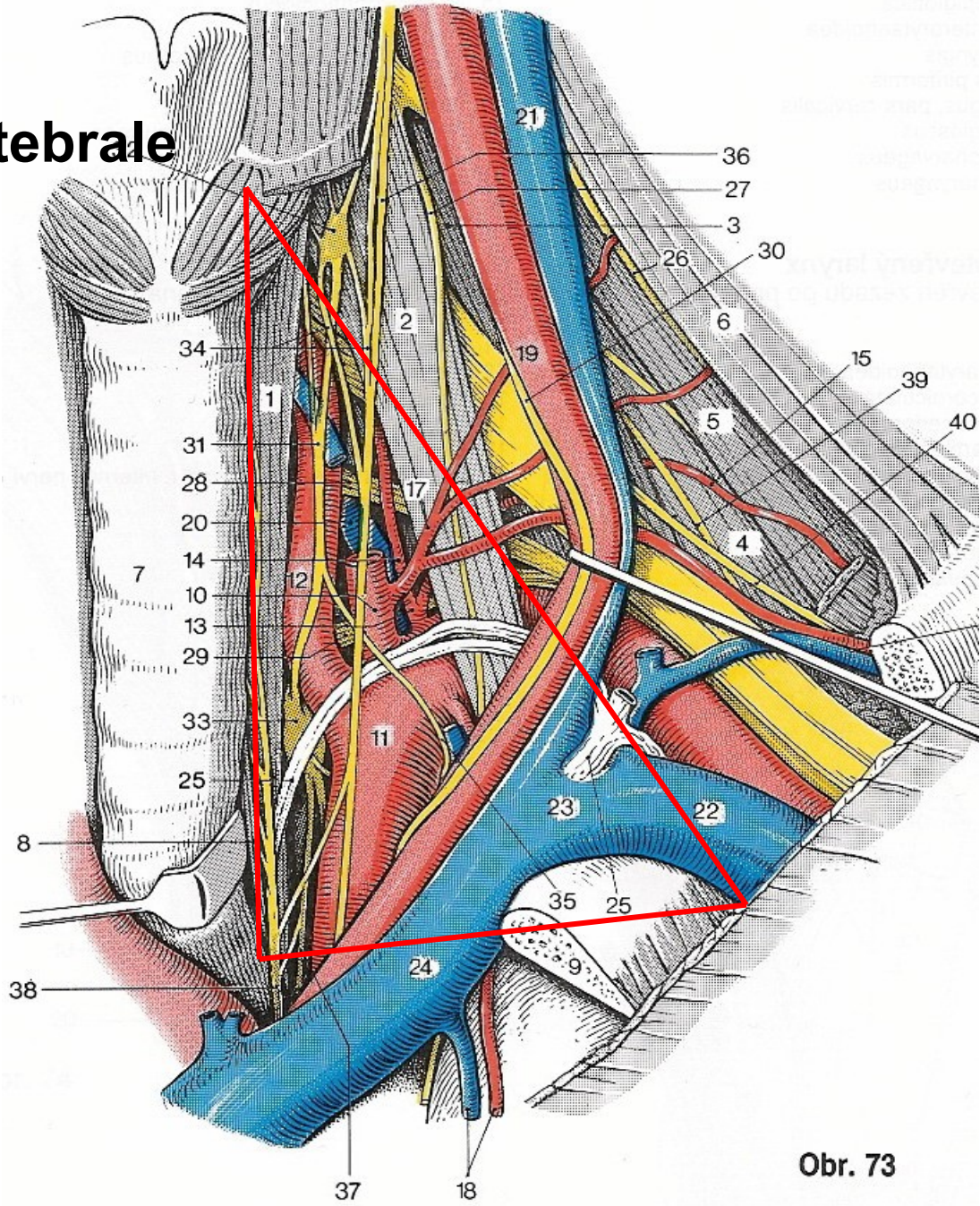




Cervical Plexus in Situ



Trigonum scalenovertebrale



Obr. 73

Trigonum colli posterior

