

ORGANUM VESTIBULOCOCHLEARE

Auris externa

Auricula

Meatus acusticus externus

Membrana tympani

Auris media

Cavitas tympani

Cellulae mastoideae

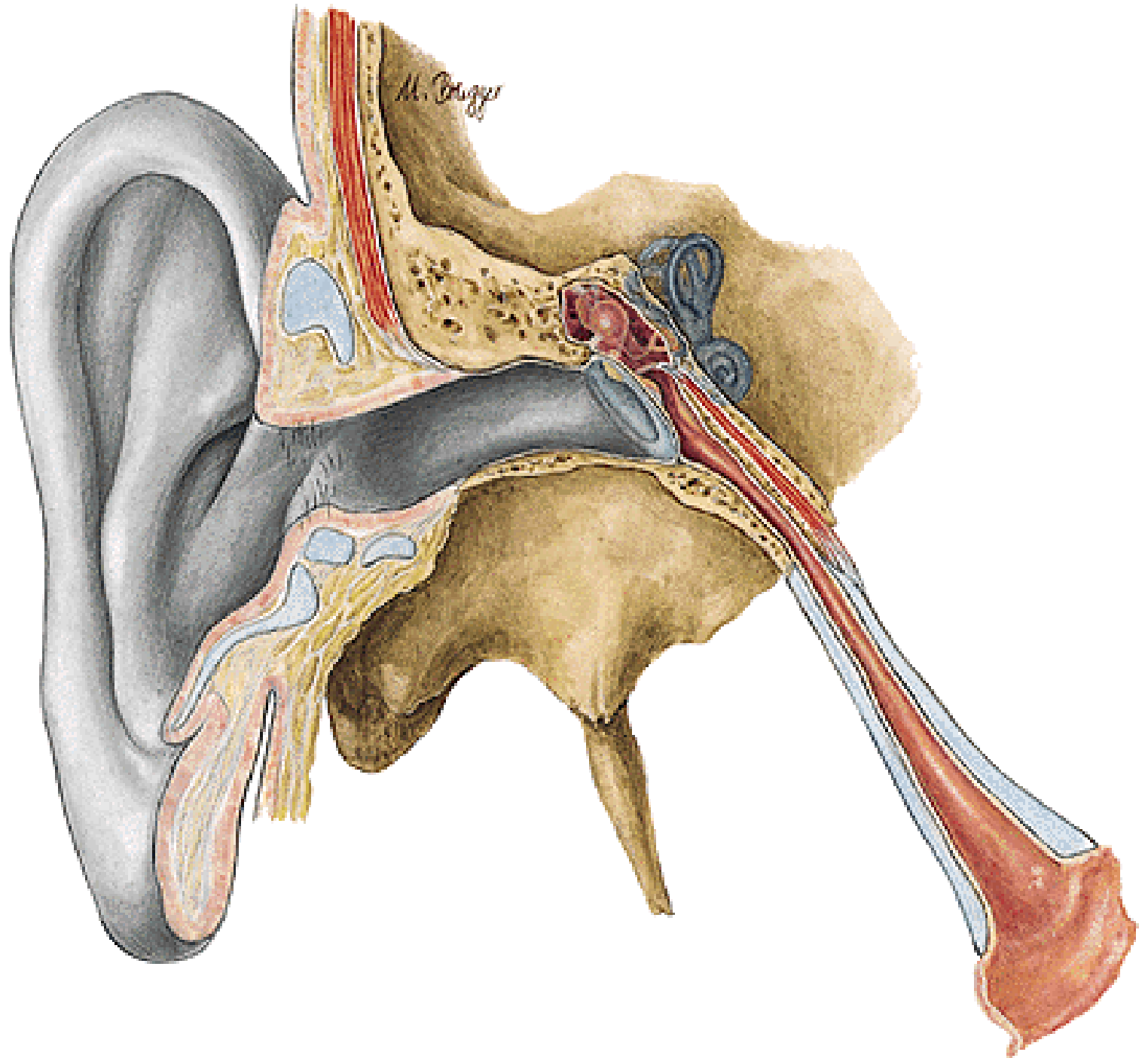
Ossicula auditus

Tuba auditiva

Auris interna

Labyrinthus osseus

Labyrinthus membranaceus



AURICULA

HELIX - CRUS

TUBERCULUM AURICULAE

ANTHELIX

CRURA ANTHELICIA

FOSSA TRIANGULARIS

SCAPHA

CONCHA AURICULAE

- CYMBA CONCHAE

- CAVUM CONCHAE

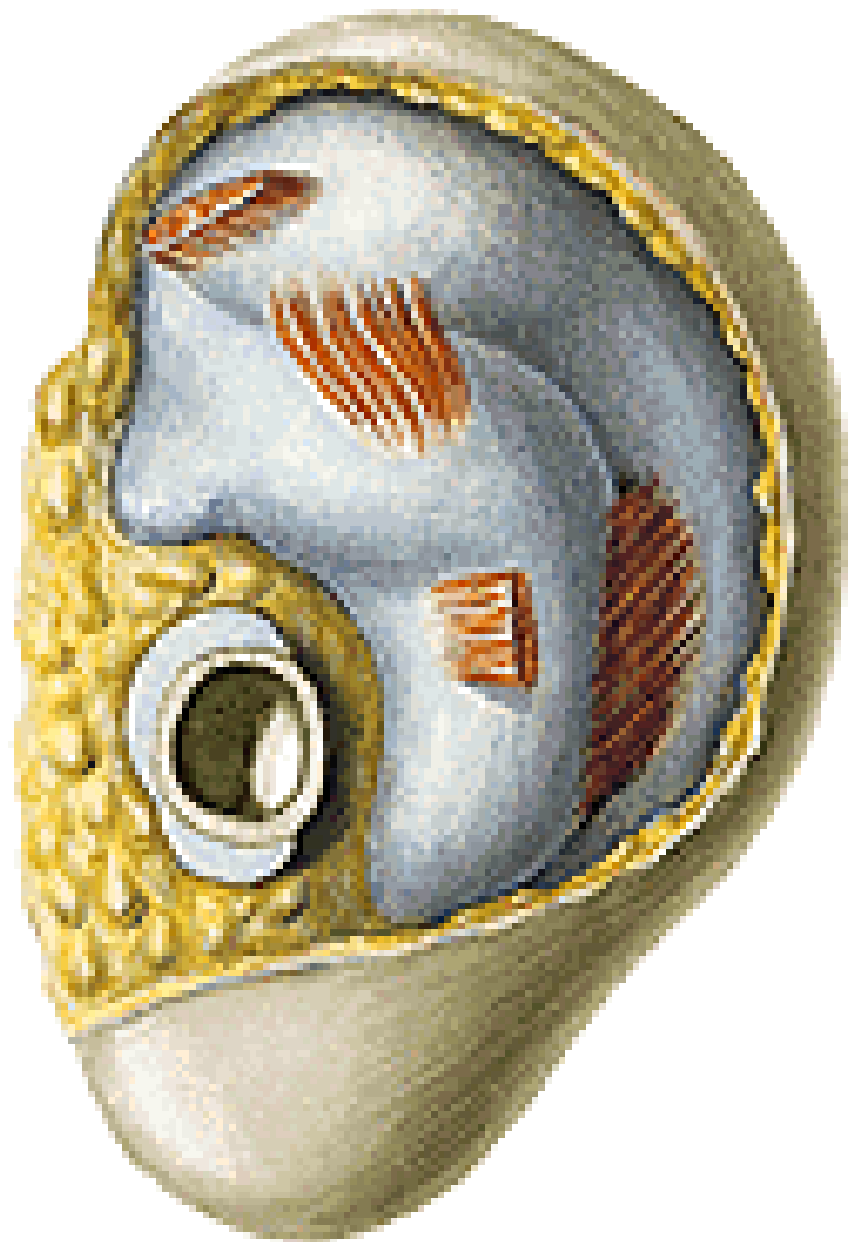
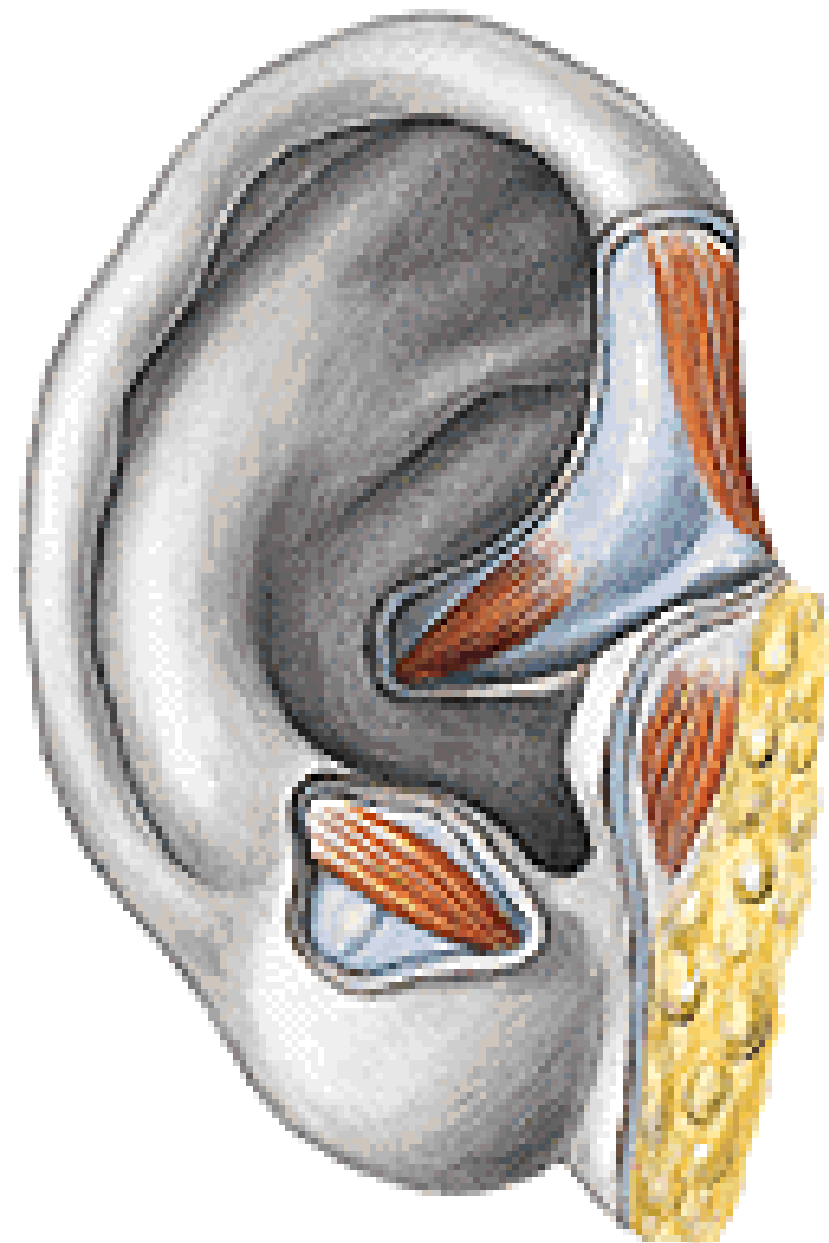
TRAGUS

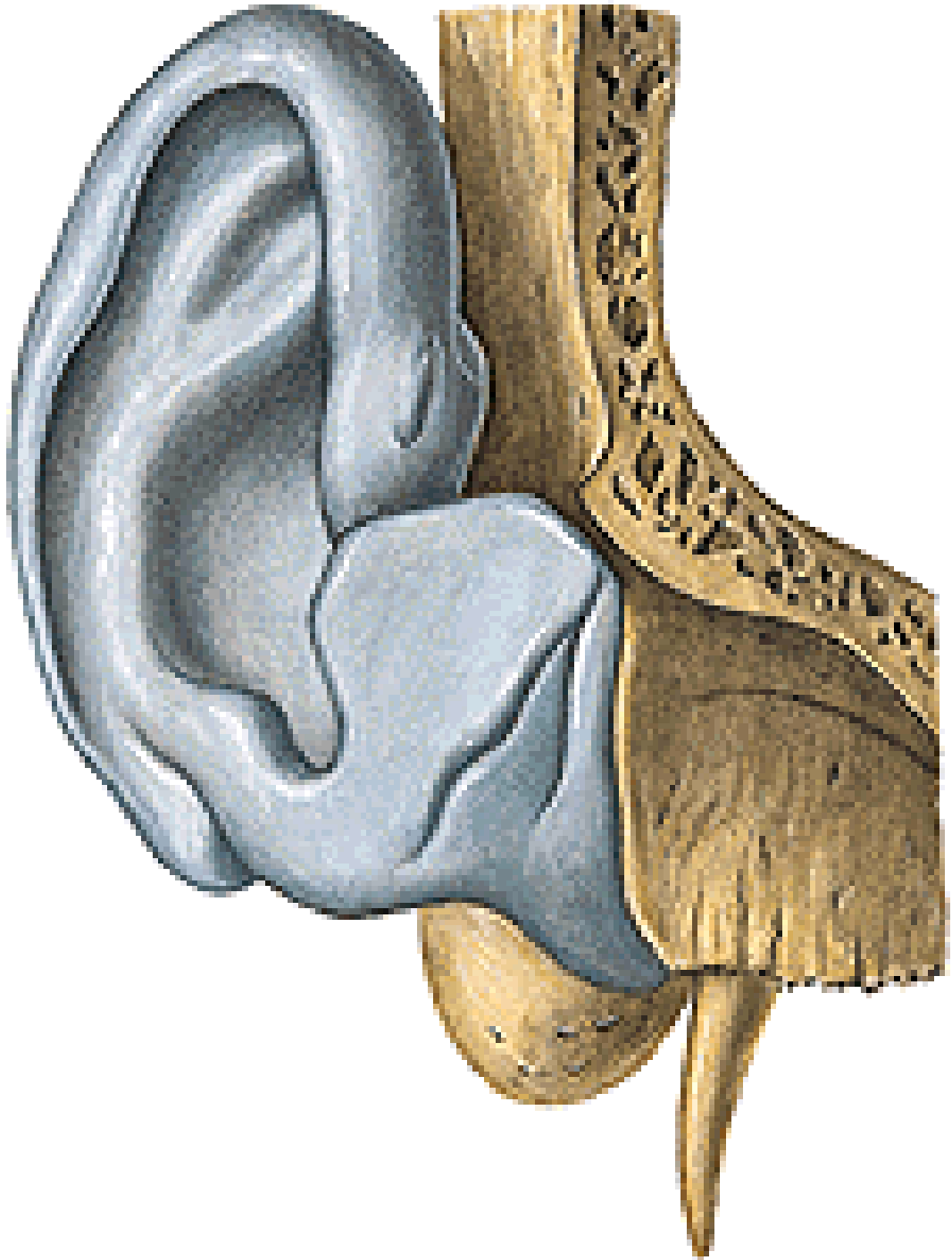
ANTITRAGUS

INCISURA INTERTRAGICA

LOBULUS AURICULAE







AURICULA:

A. AURICULARIS POSTERIOR

RR. AURICULARES ANTERIORES A. TEMPORALIS SPF.

A. OCCIPITALIS

NODI LYMPH. PAROTIDEI

NODI LYMPH. MASTOIDEI

NODI LYMPH. CERVICALES PROFUNDI

N. AURICULARIS MAGNUS

N. OCCIPITALIS MINOR

R. AURICULARIS N. VAGI

N. AURICULOTEMPORALIS

N. FACIALIS

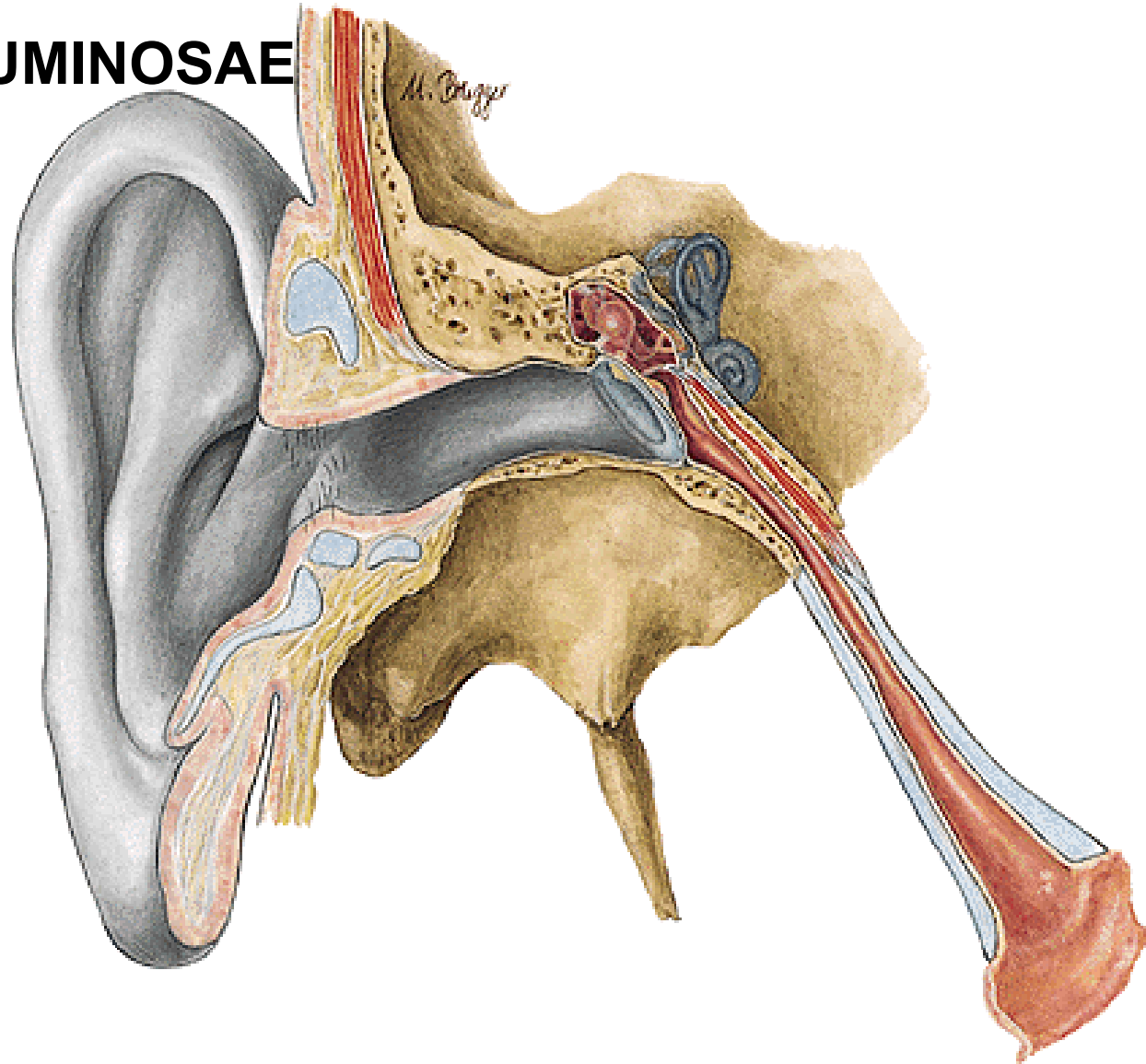
MEATUS ACUSTICUS EXTERNUS

ISTHMUS

GLANDULAE CERUMINOSAE

CERUMEN

TRAGI



**A. AURICULARIS POST.
RR. AURICULARES A. TEMPORALIS SPF.**

**V. JUGULARIS EXT.
V. MAXILLARIS
PLEXUS PTERYGOIDEUS**

**N. AURICULOTEMPORALIS
R. AURICULARIS N. VAGI**

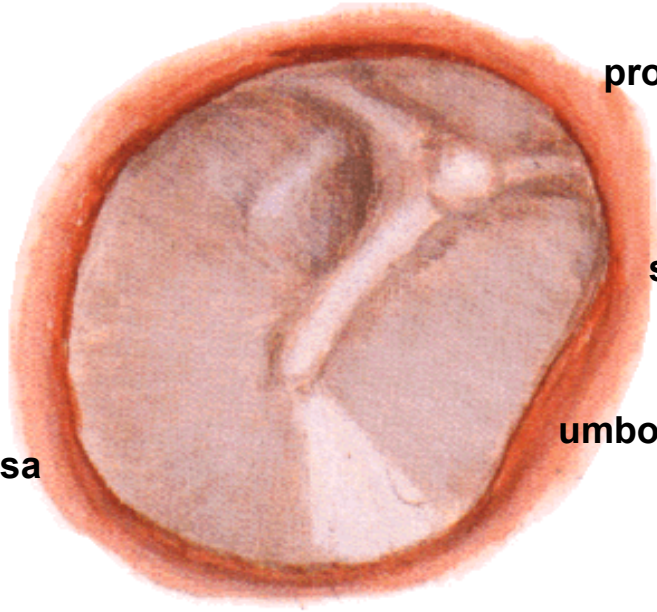
MEMBRANA TYMPANI

External Ear

Right Tympanic Membrane

pars flaccida membranae tympani (membrana Shrapnelli)

plica mallearis anterior et posterior



prominentia mallearis

stria mallearis

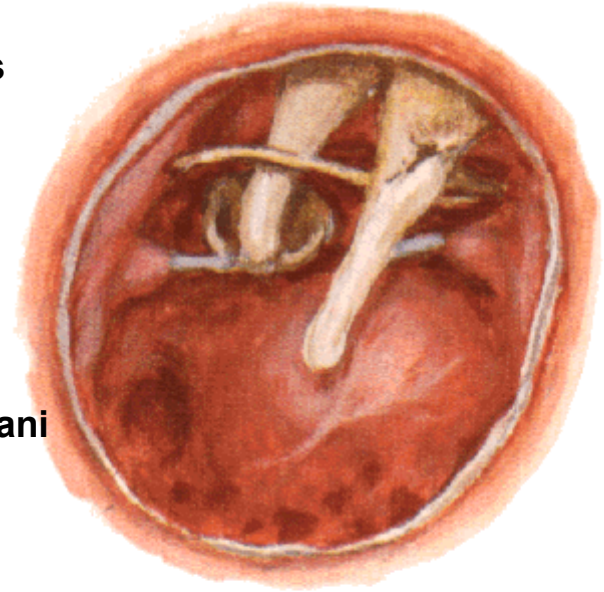
umbo membranae tympani

light reflex (trigonum Woodi)

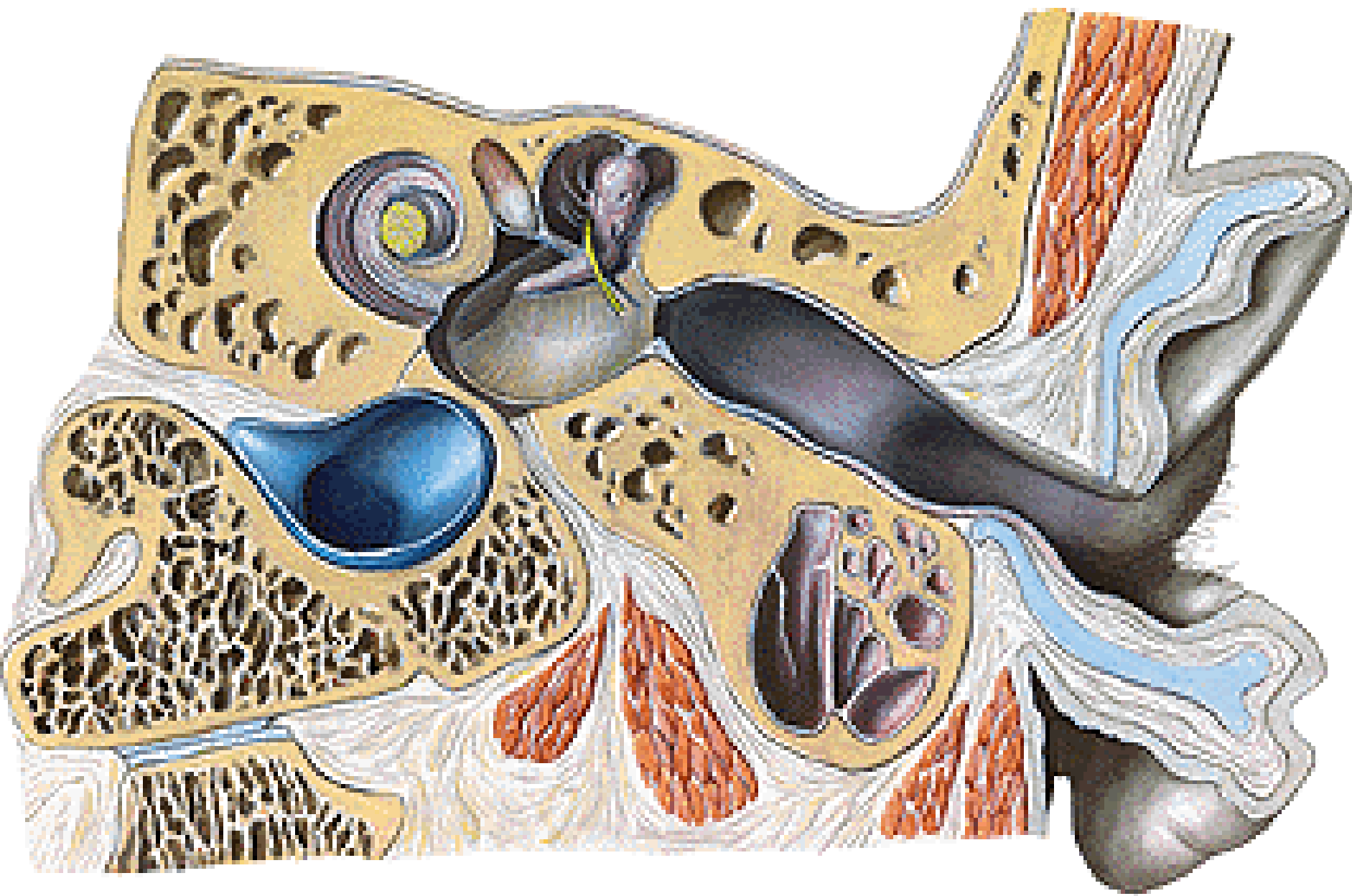
Viewed through speculum

Tympanic Cavity

Viewed from External Acoustic Meatus



Tympanic Membrane Removed



MEMBRANA TYMPANI:

A. MAXILLARIS

A. OCCIPITALIS

A. AURICULARIS POST.

V. JUGULARIS EXT.

SINUS DURAE MATRIS

PLEXUS TUBAE AUDITIVAE

N. AURICULOTEMPORALIS

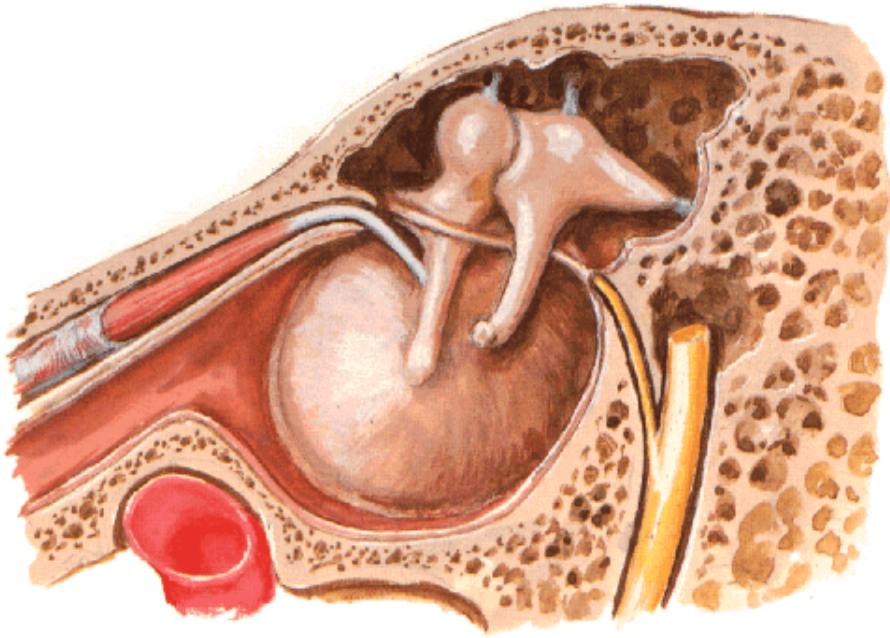
R. AURICULARIS N. VAGI

N. TYMPANICUS N. GLOSSOPHARYNGEI

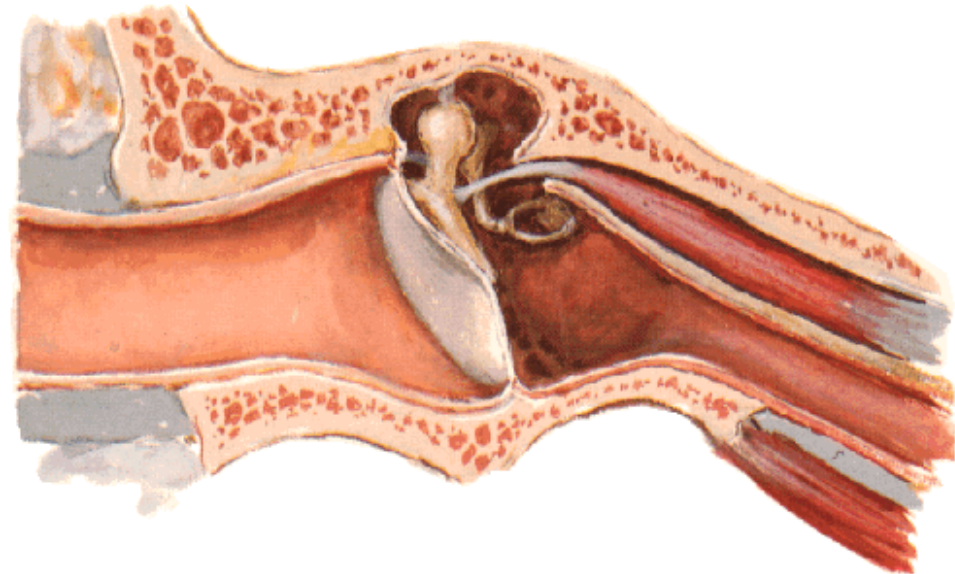
N. FACIALIS

CAVUM TYMPANI

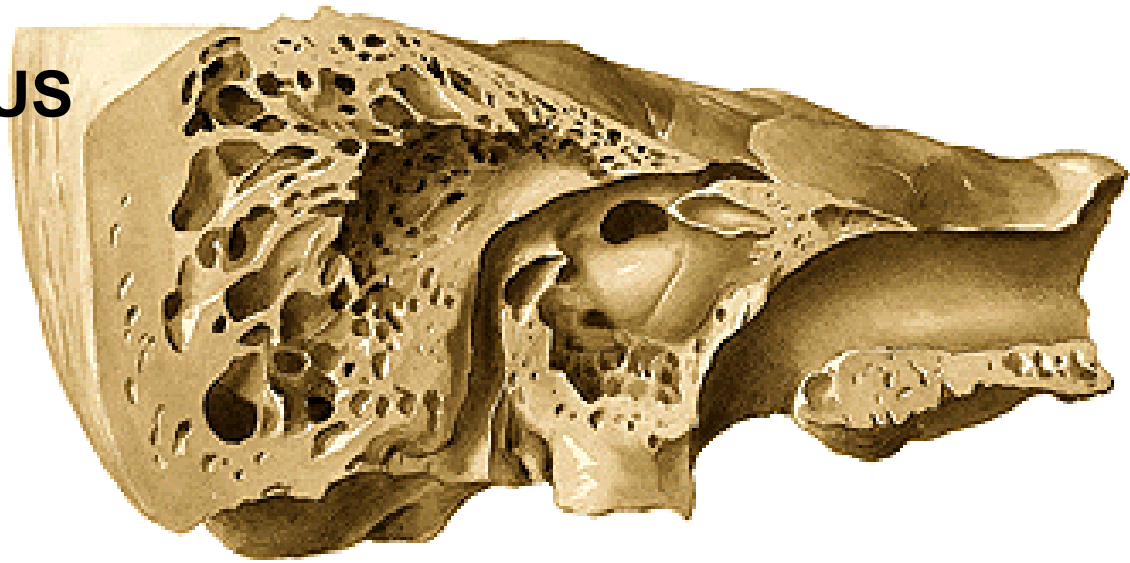
Tympanic Cavity - Lateral Wall
Medial View



External Ear and Tympanic Cavity
Coronal Oblique Section



PARIES LABYRINTHICUS



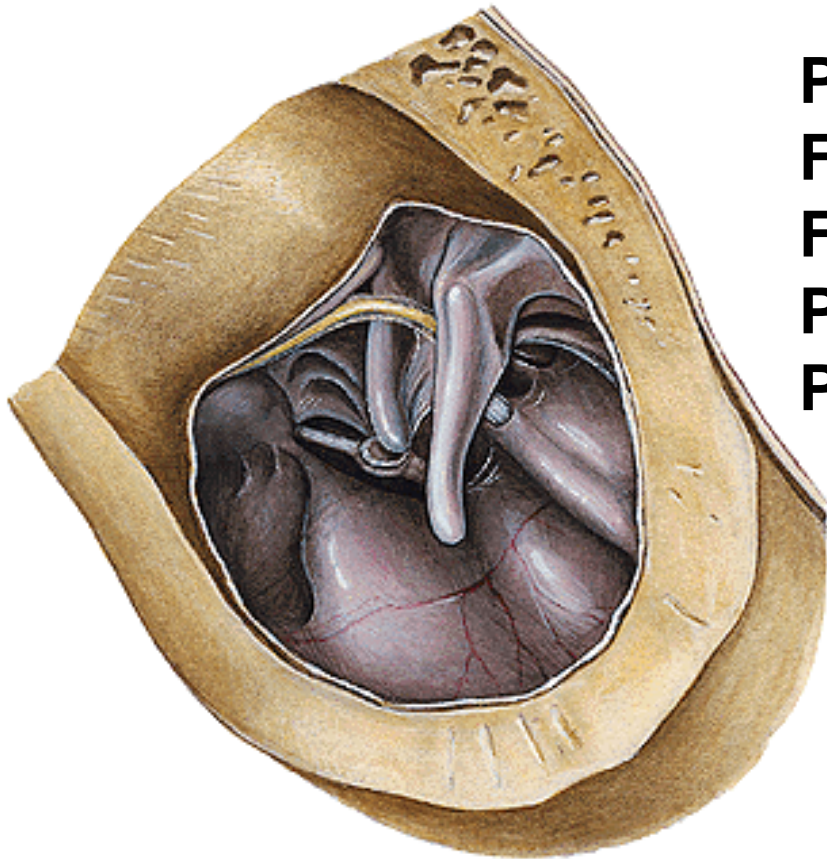
PROMONTORY

FENESTRA VESTIBULI

FENESTRA COCHLEAE

PROCESSUS COCHLEARIFORMIS

PROMINENTIA CANALIS FACIALIS

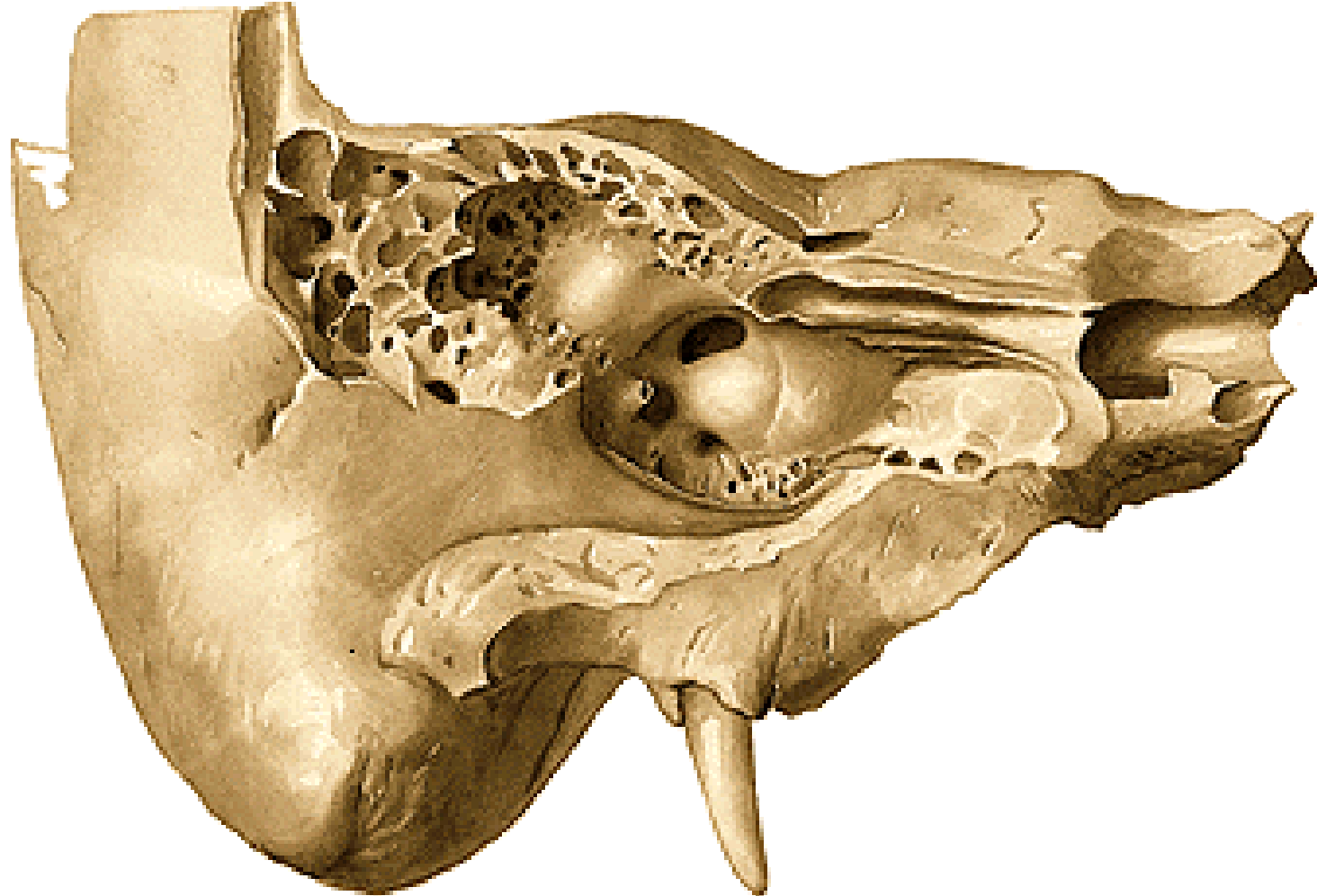


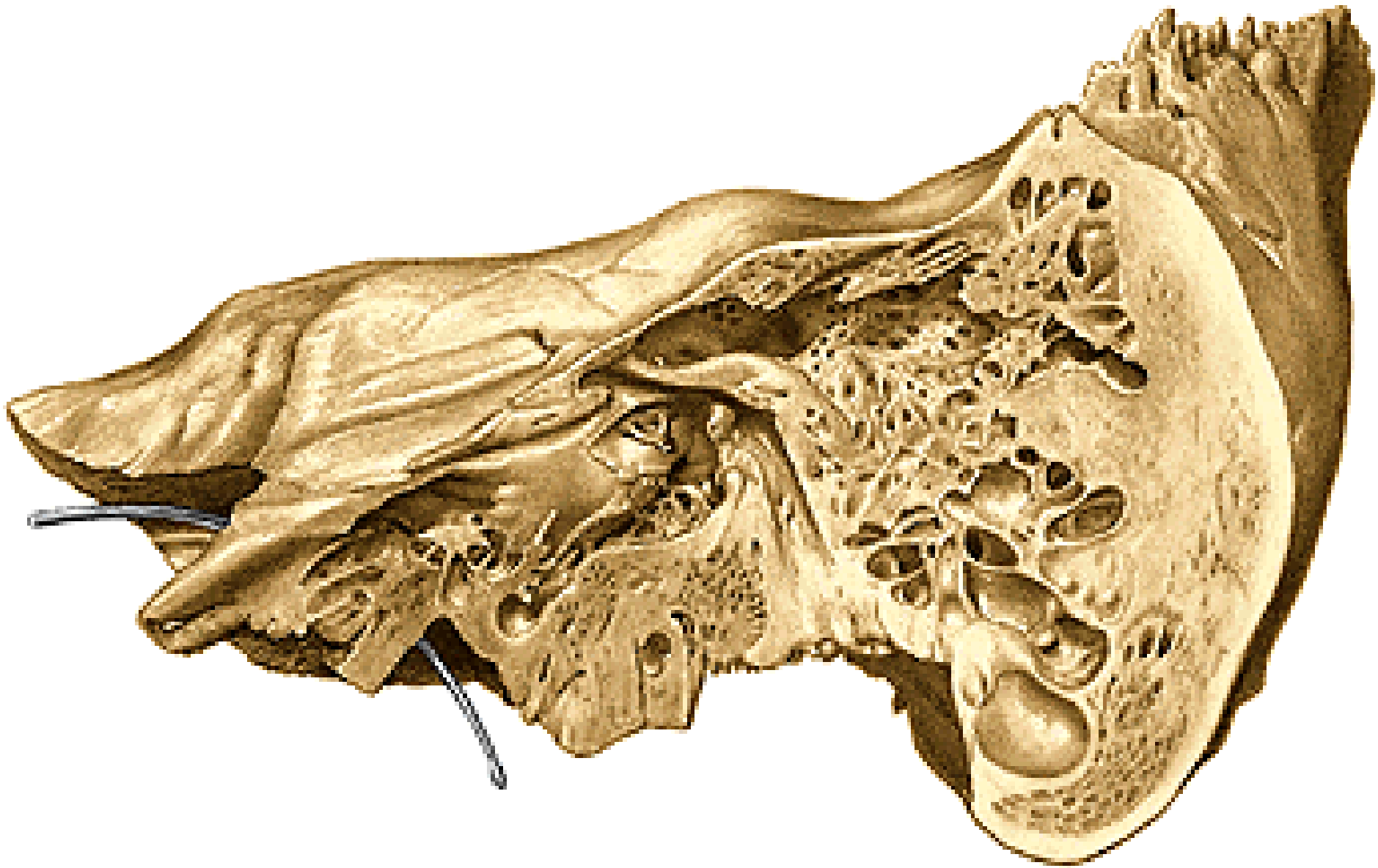
PARIES MASTOIDEUS

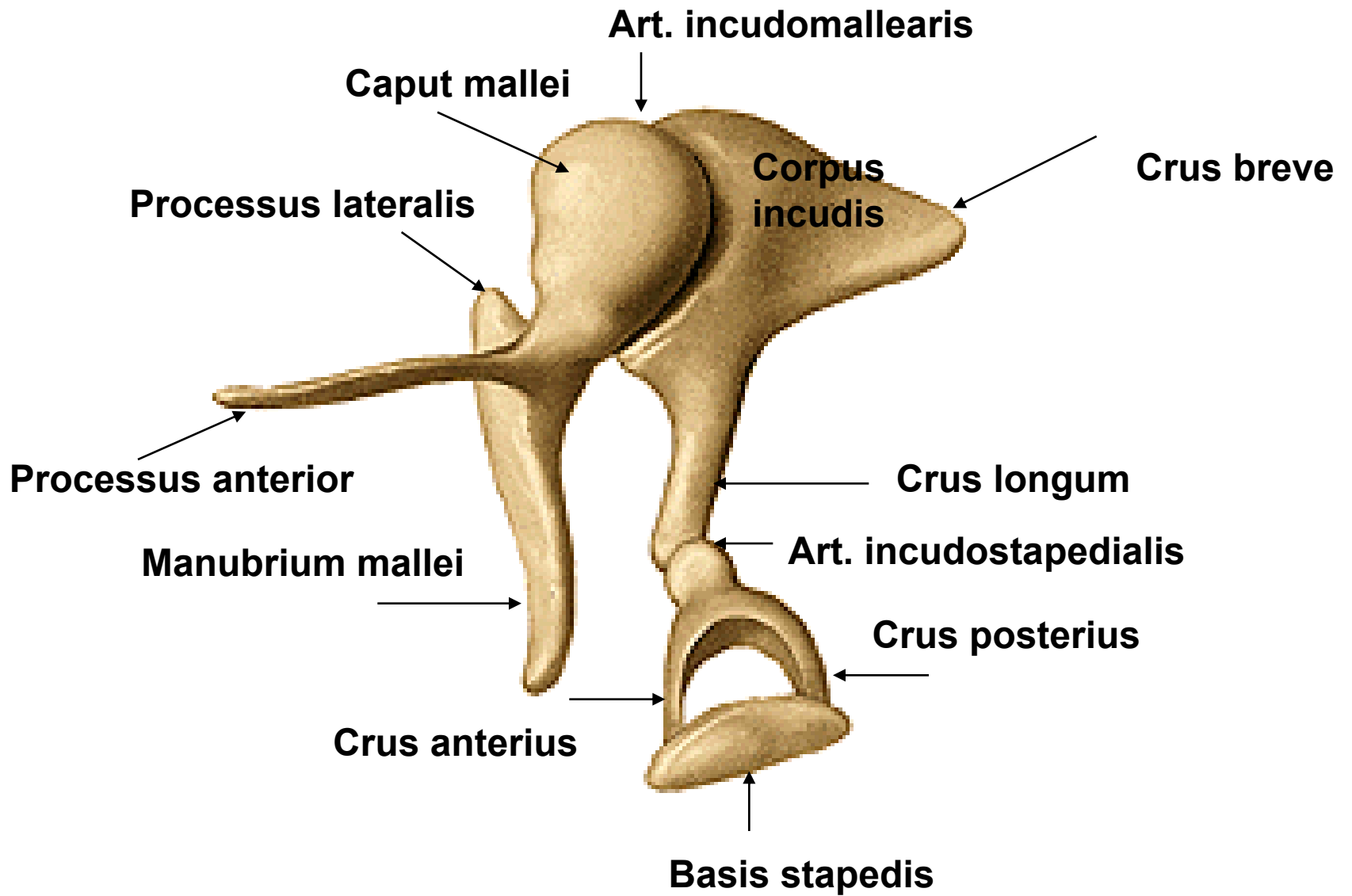
ADITUS AD ANTRUM MASTOIDEUM

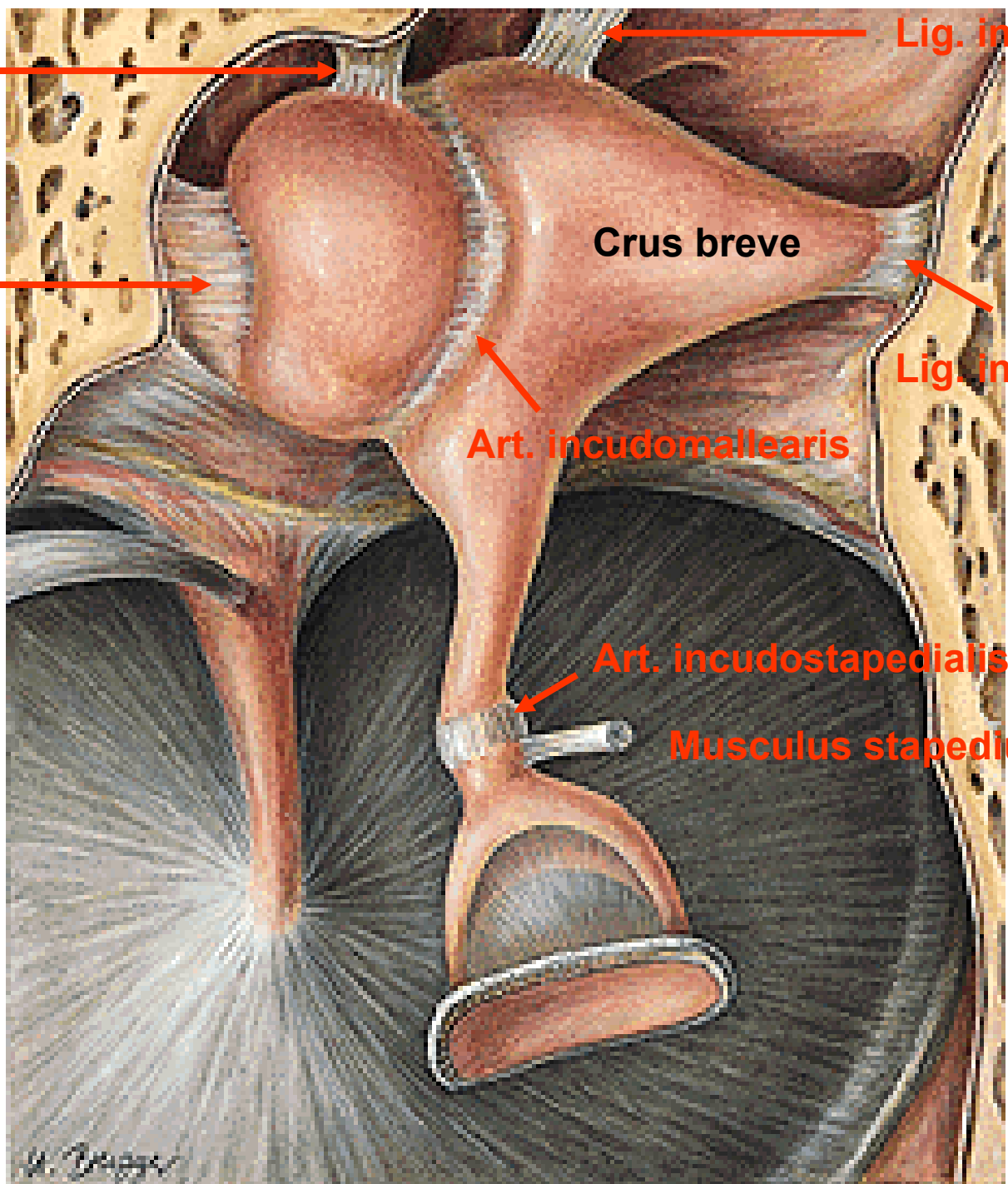
PROMINENTIA CANALIS SEMICIRCULARIS LATERALIS

EMINENTIA PYRAMIDALIS









Lig. incudis sup.

Lig. mallei sup.

Lig. mallei lat.

Crus breve

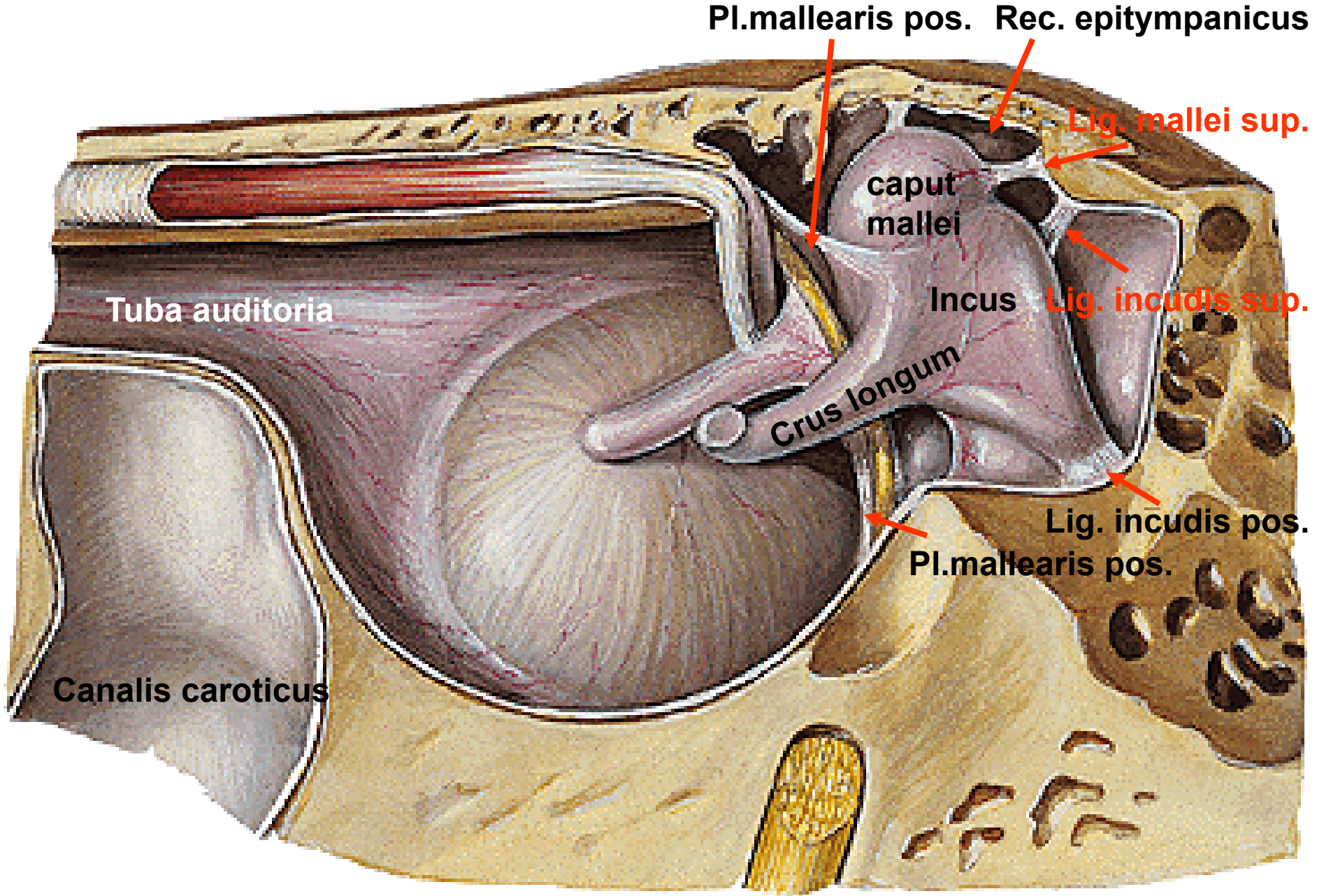
Lig. incudis post.

Art. incudomallearis

Art. incudostapedialis

Musculus stapedius, Tendo

W. Dreyer



Pl.mallearis pos. Rec. epitympanicus

Lig. mallei sup.

caput mallei

Incus

Lig. incudis sup.

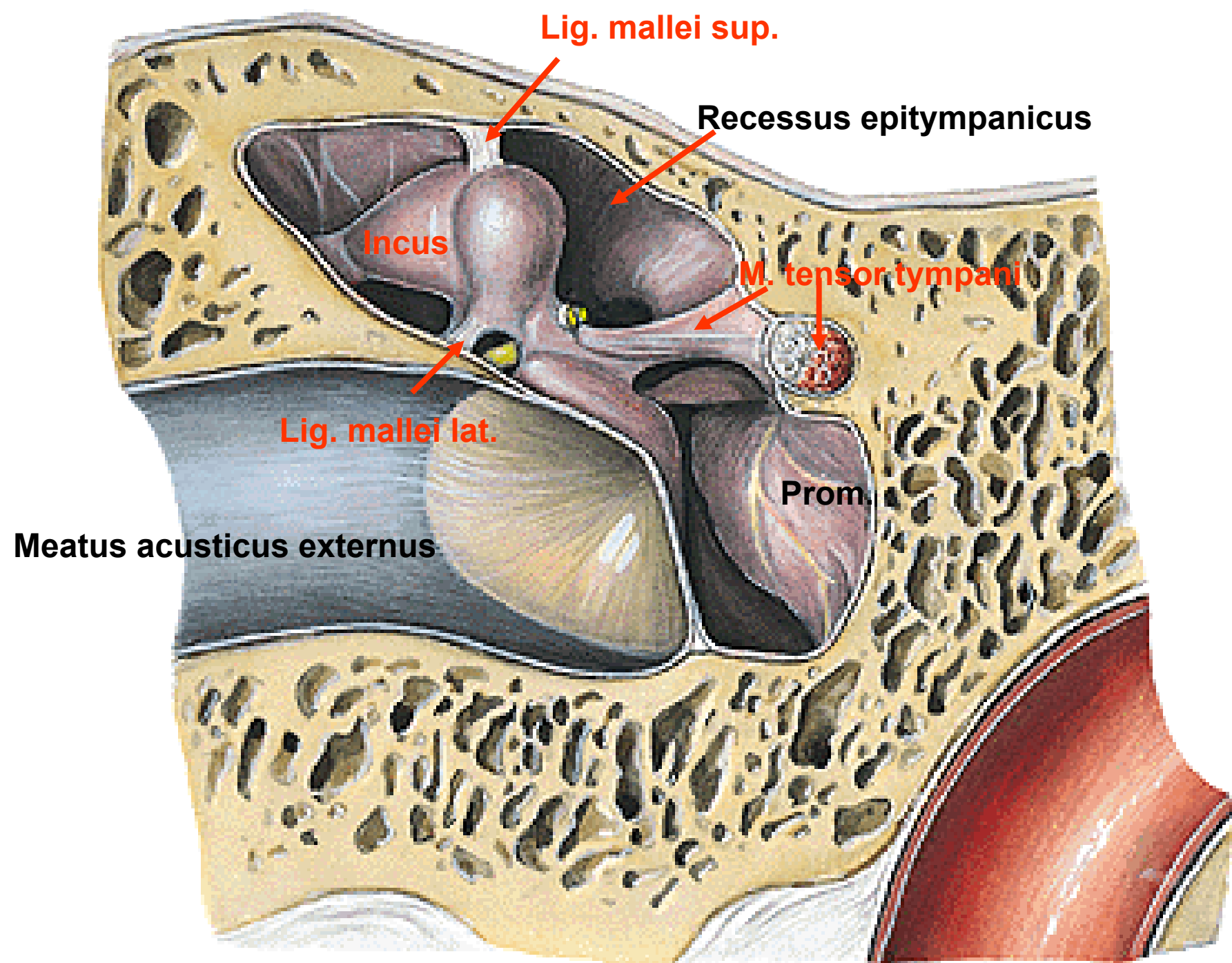
Crus longum

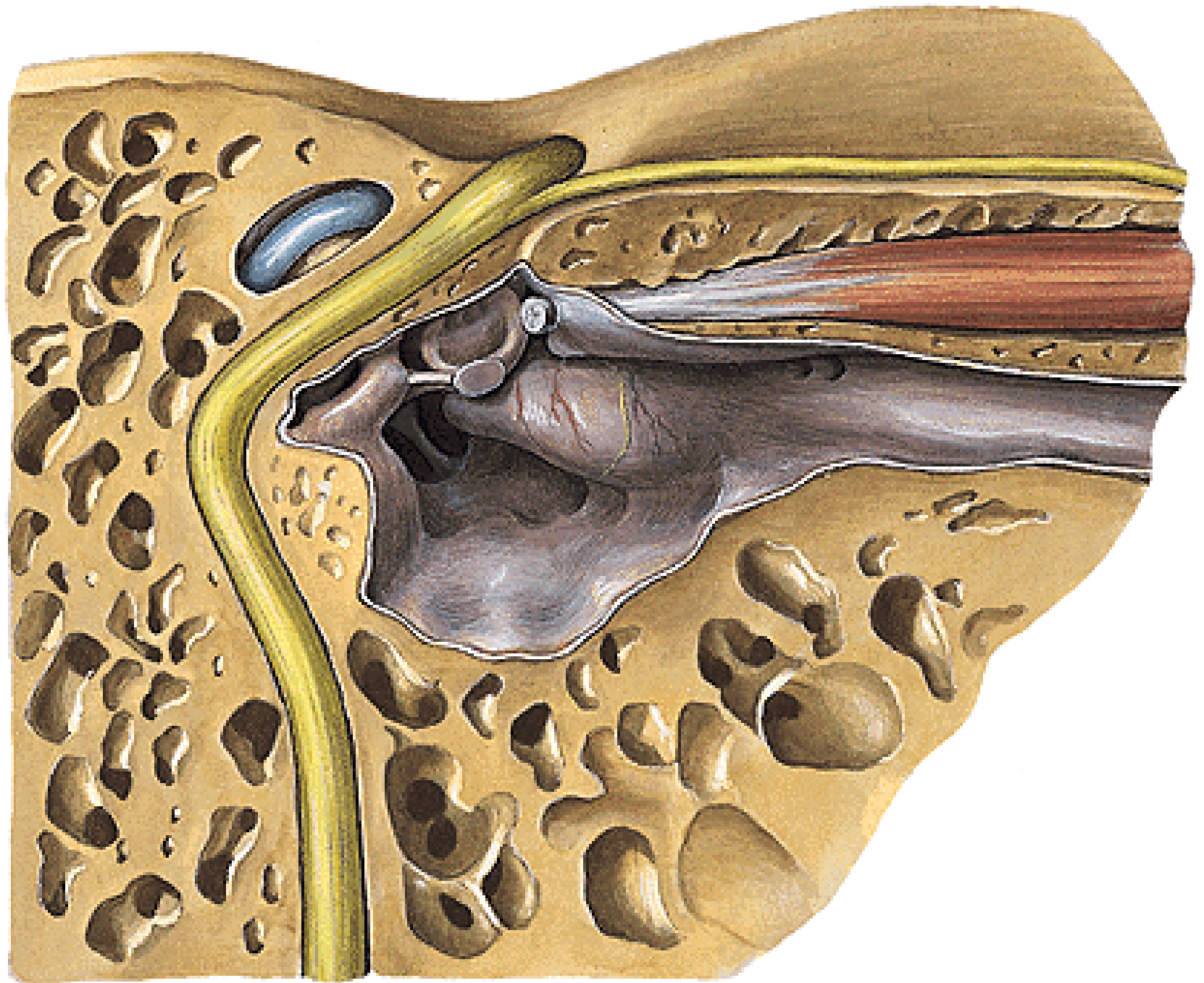
Lig. incudis pos.

Pl.mallearis pos.

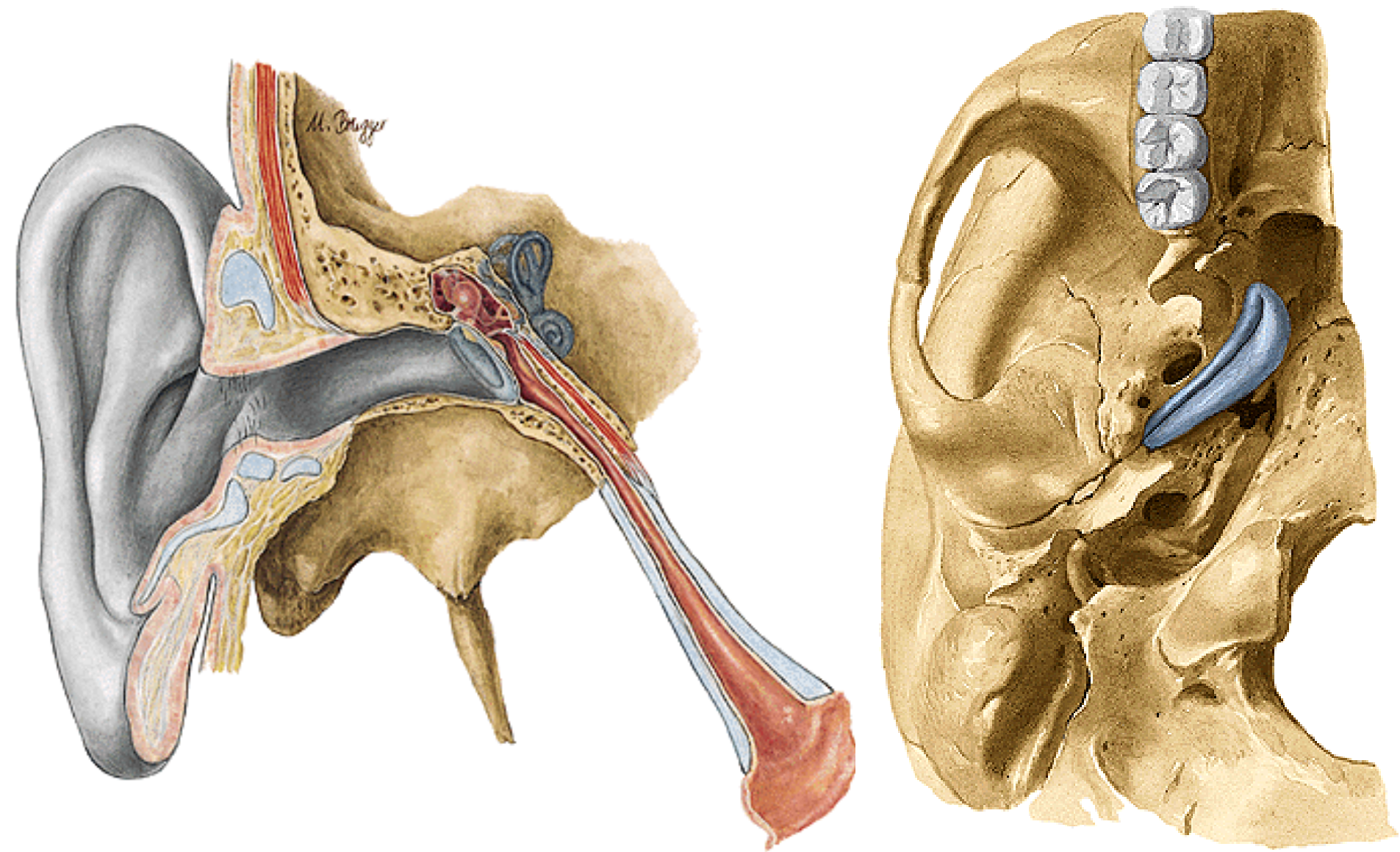
Tuba auditoria

Canalis caroticus





TUBA AUDITIVA (PHARYNGOTYMPANICA)



CAVUM TYMPANI:

A. TYMPANICA ANT.

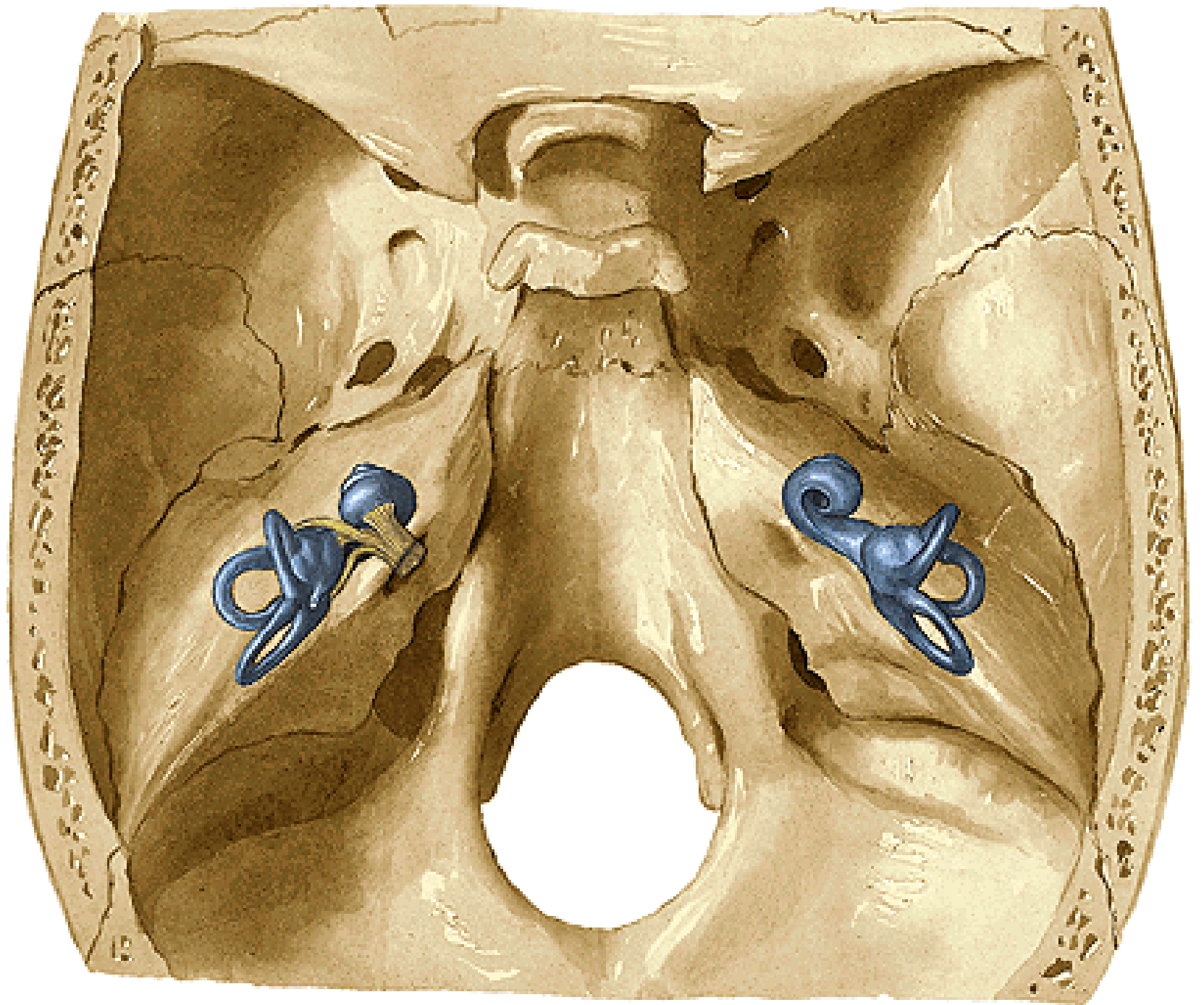
A. STYLOMASTOIDEA

A. AURICULARIS POST.

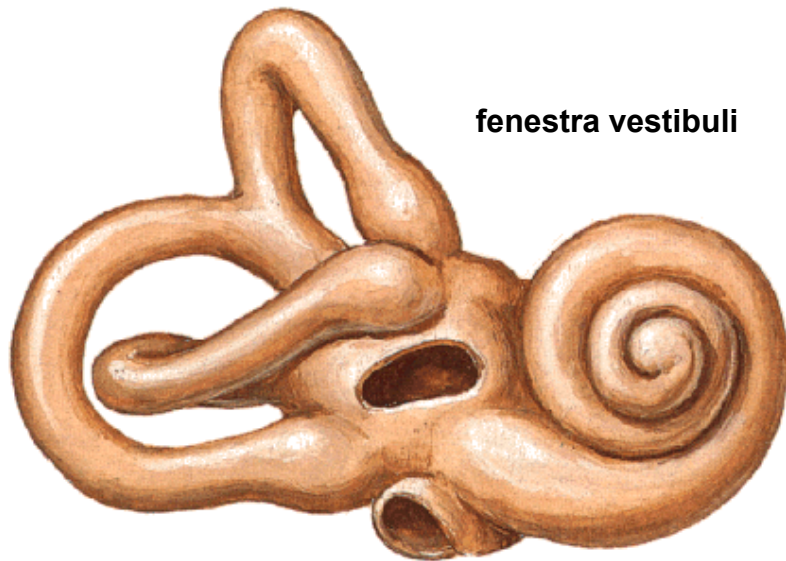
PLEXUS PTERYGOIDEUS

PLEXUS TYMPANICUS

CHORDA TYMPANI



Right Osseous Labyrinth
Anterolateral View



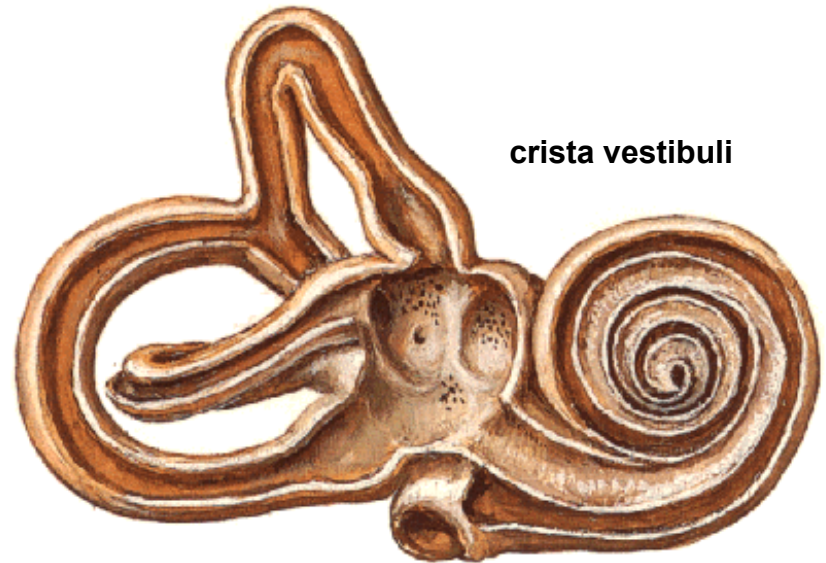
fenestra vestibuli

fenestra cochleae

cochlea, vestibulum et canales semicirculares ossei

Right Osseous Labyrinth - Dissected
Membranous Labyrinth Removed

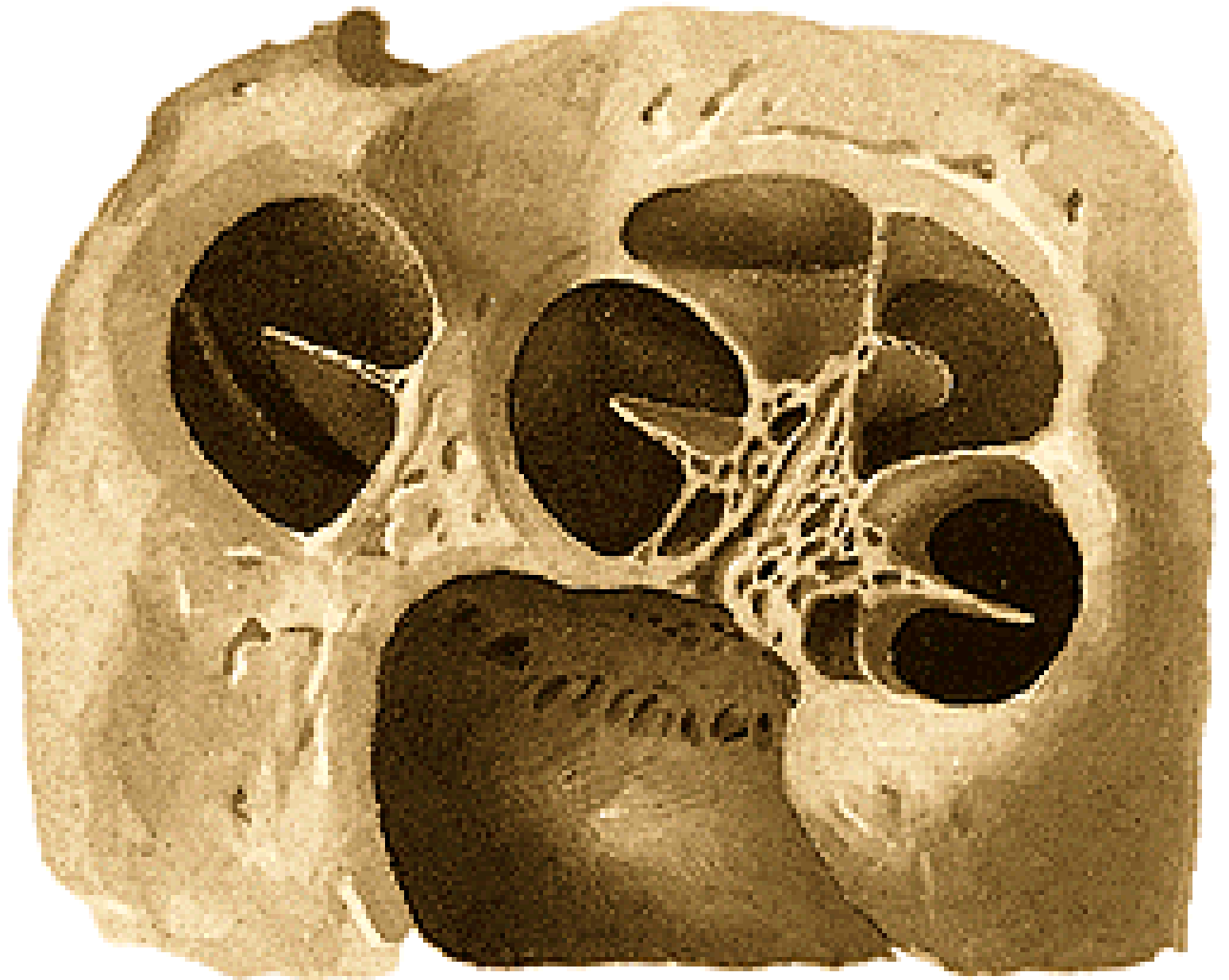
recessus ellipticus - macula cribrosa superior

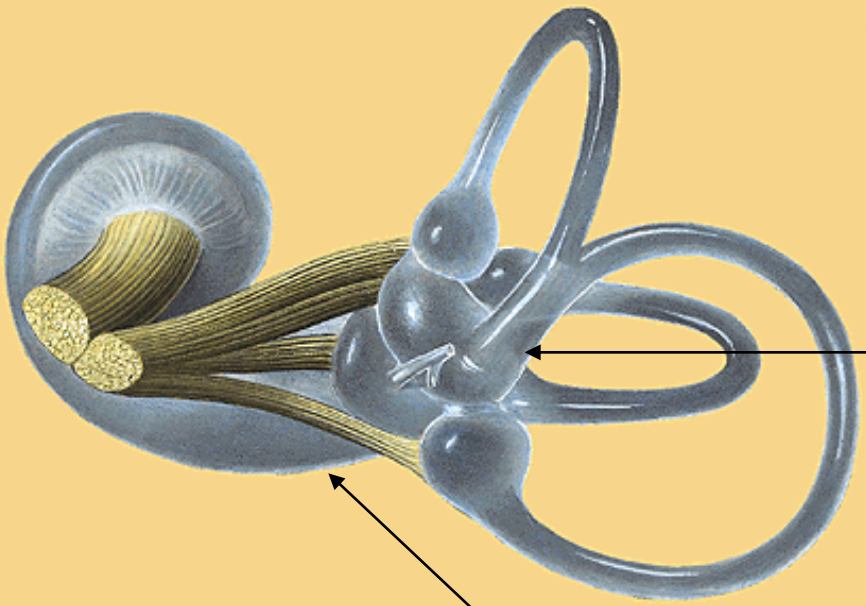


crista vestibuli

recessus cochlearis - macula cribrosa inferior

recessus sphericus - macula cribrosa media





Crus membranaceum commune

Saccus endolymphaticus

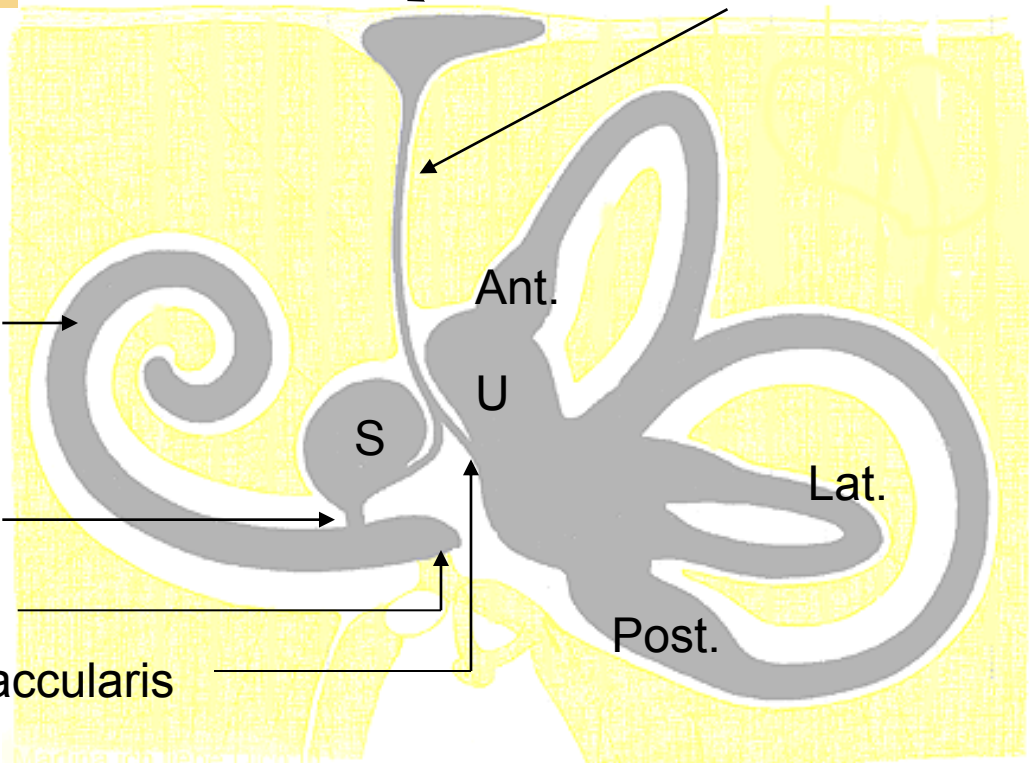
Ductus endolymphaticus

Ductus cochlearis

Ductus reuniens

Caecum vestibulare

Ductus utriculosaccularis



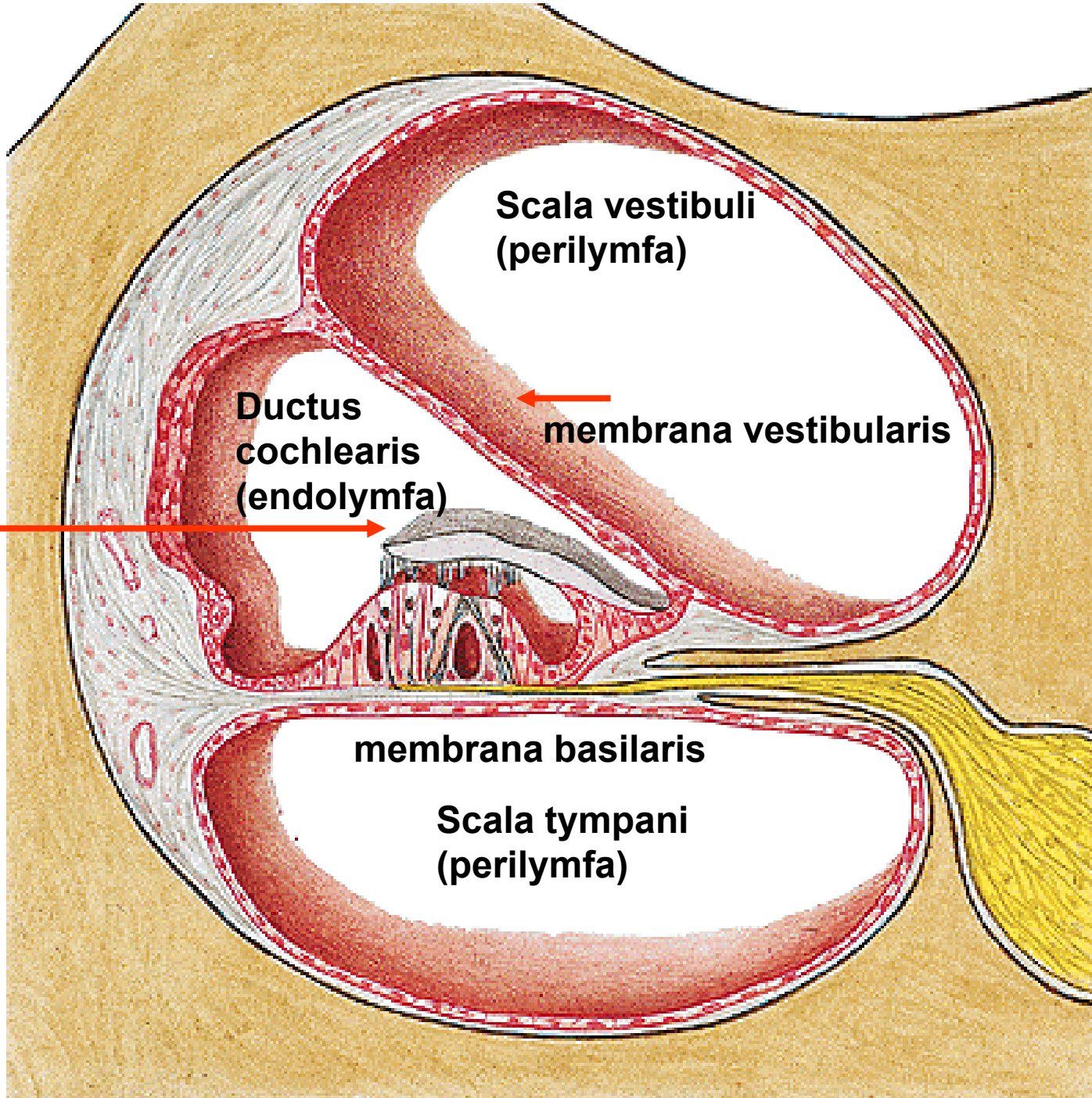
Ant.

U

S

Lat.

Post.



**Scala vestibuli
(perilymfa)**

**Ductus
cochlearis
(endolymfa)**

membrana vestibularis

**Membrana
tectoria**

membrana basilaris

**Scala tympani
(perilymfa)**

Osseous and Membranous Labyrinths

Section Through Turn of Cochlea

