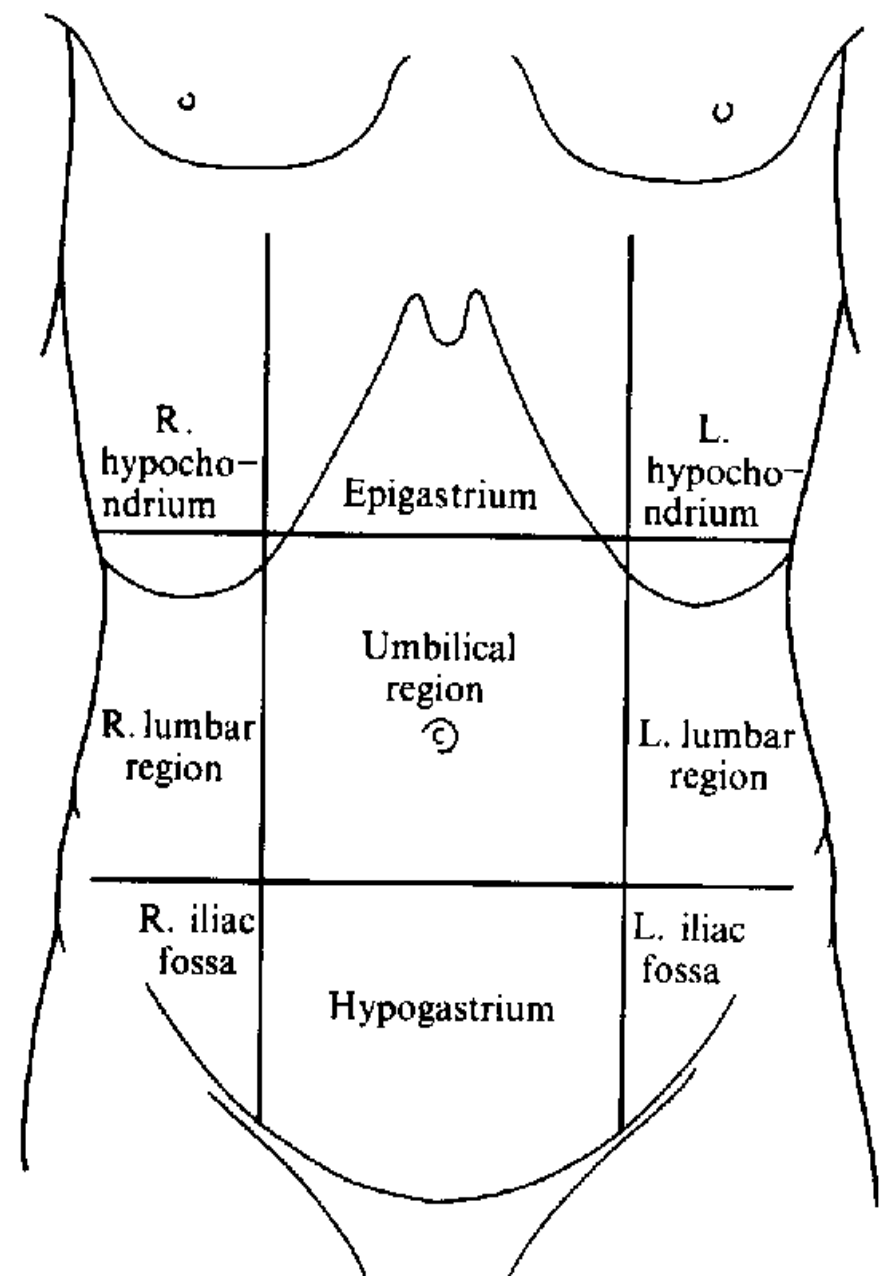
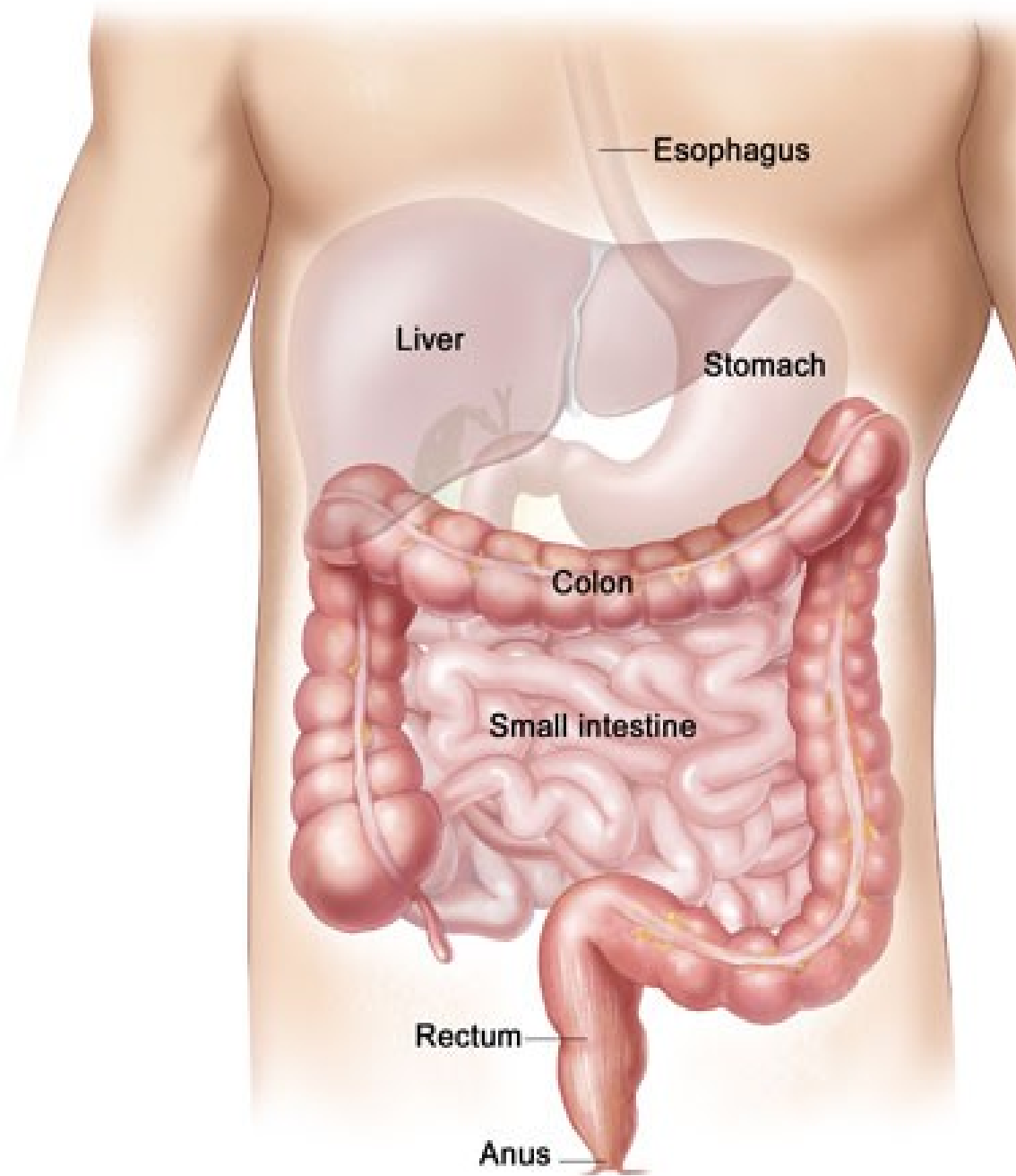
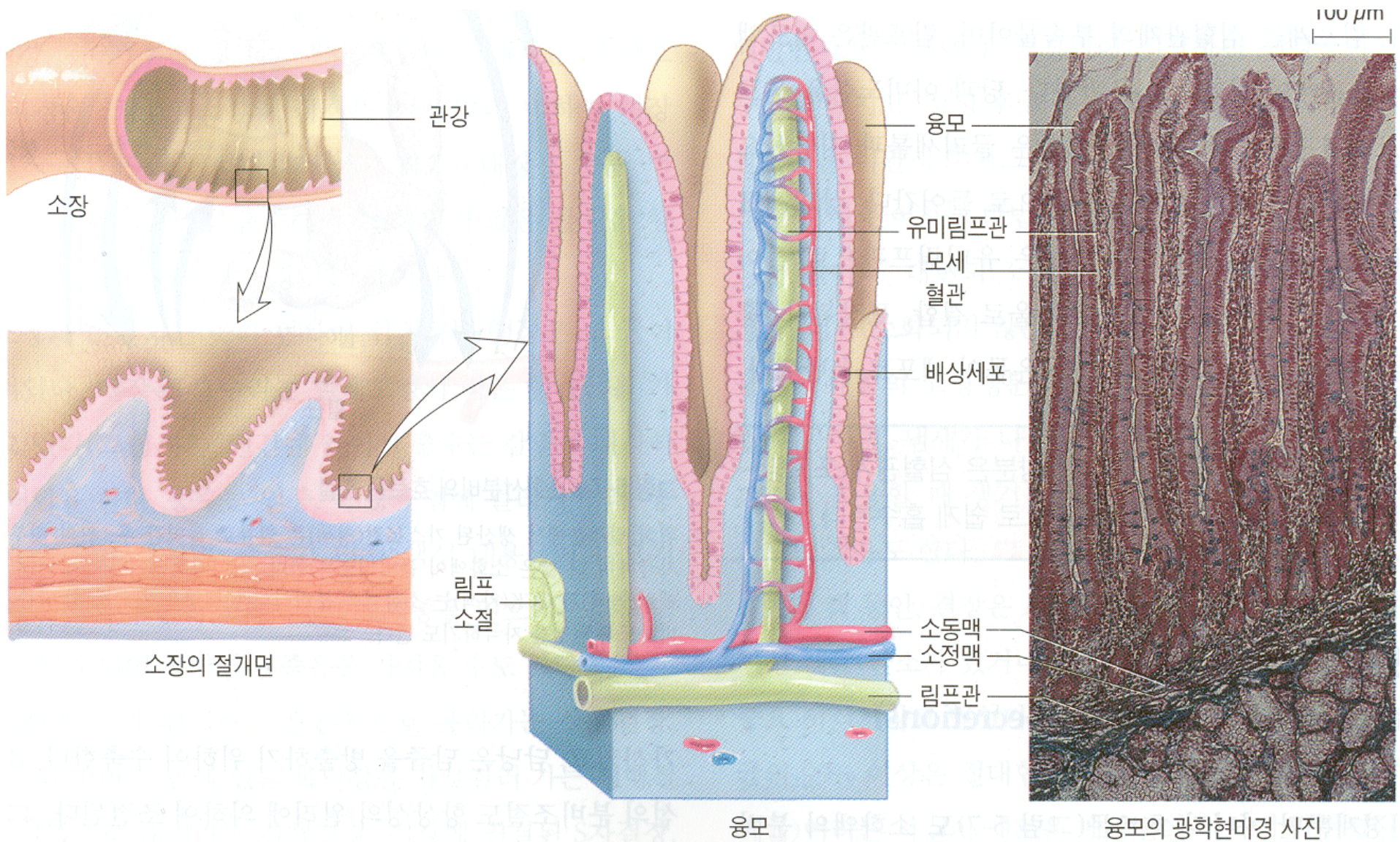


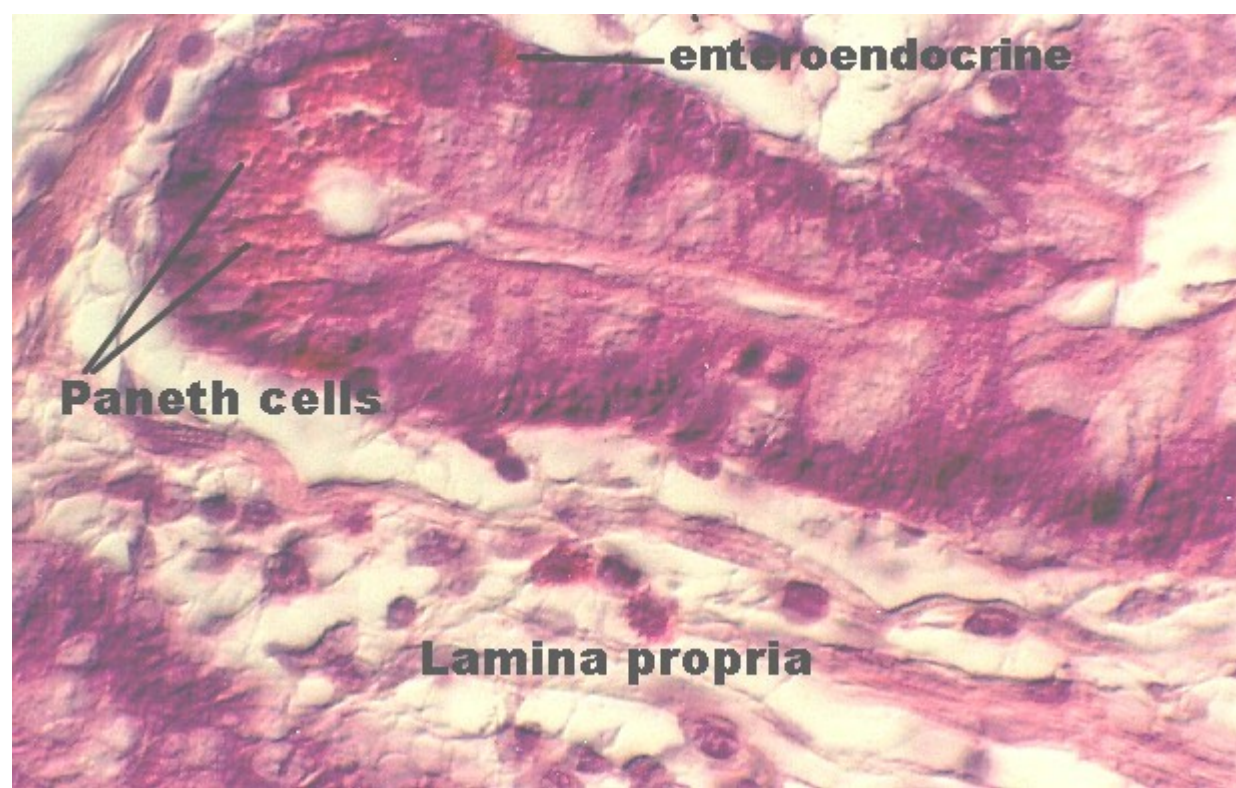
# Střeva

- tenké – duodenum
  - jejunum
  - ileum
- tlusté – caecum (+ appendix vermiformis)
  - colon ascendens
    - transversum
    - descendens
  - sigmoideum
- rectum

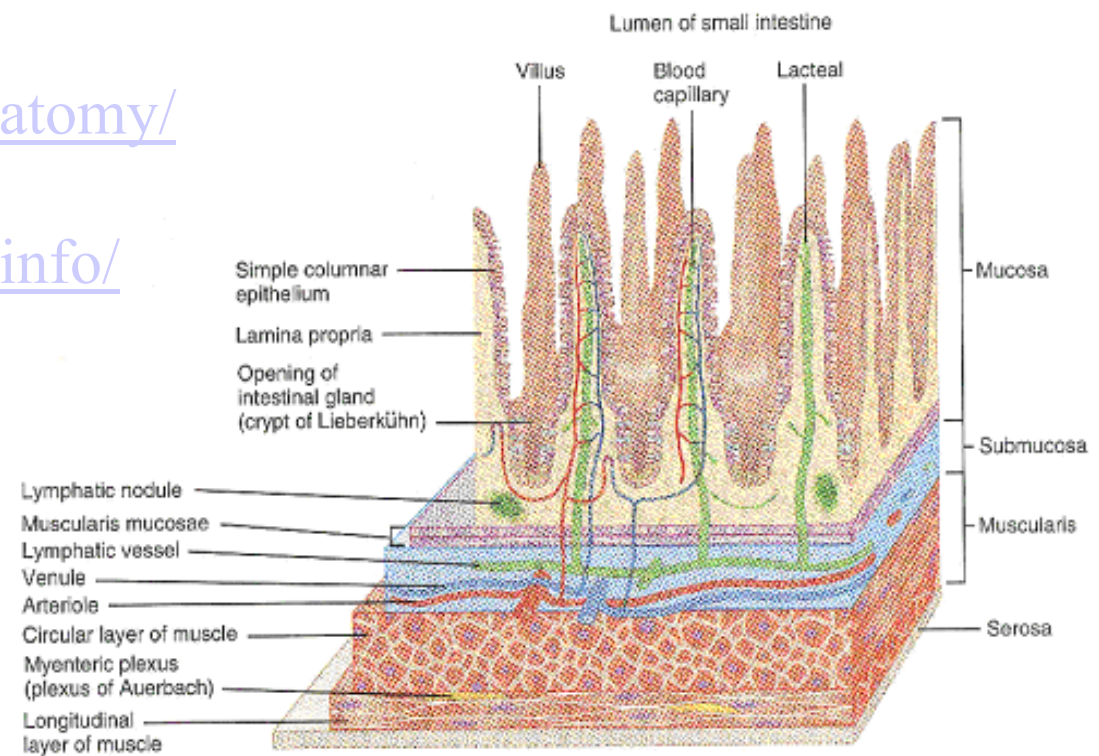
canalis analis (vývojově nikoli střevo)

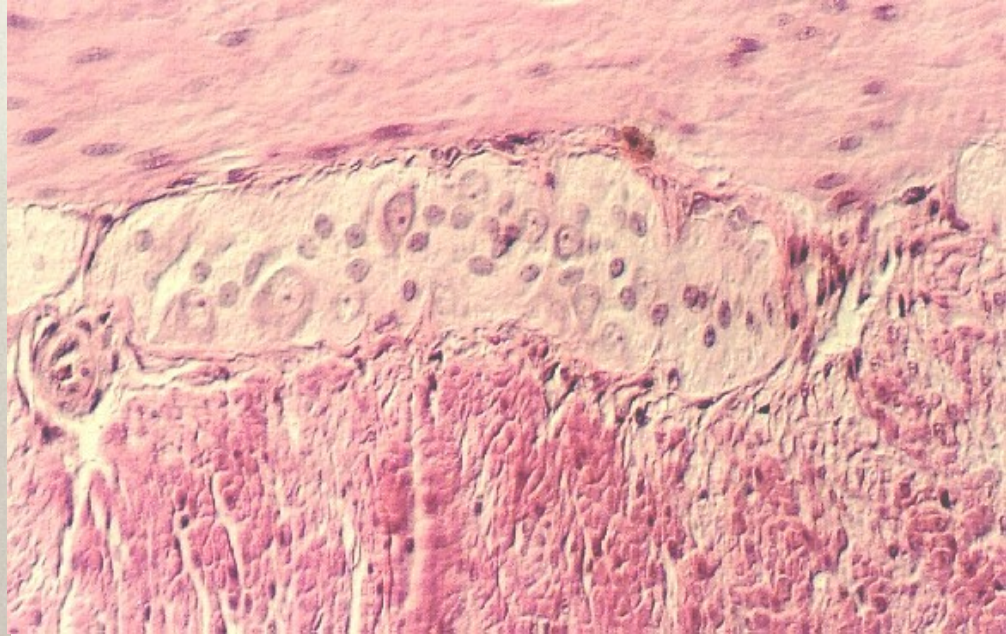
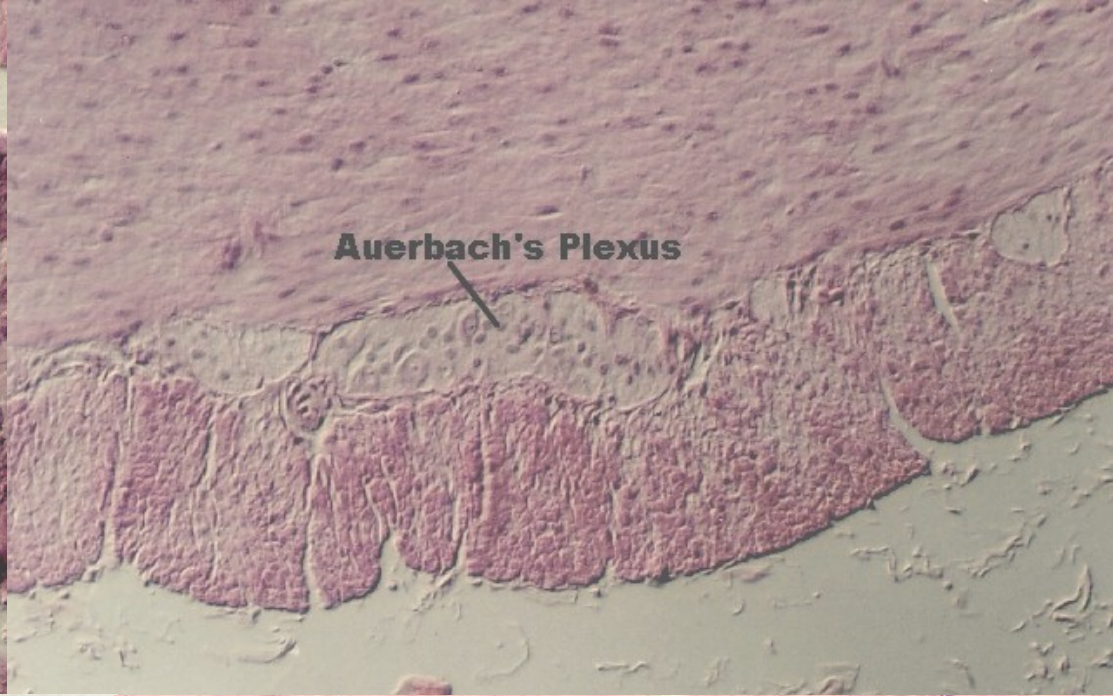




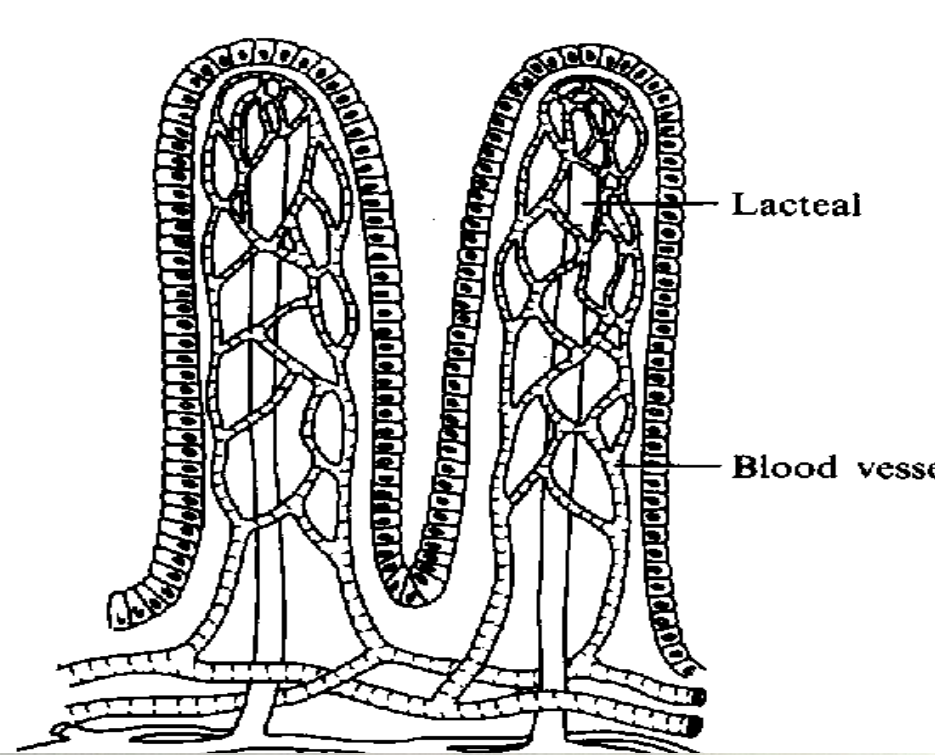


<http://cellbio.utmb.edu/microanatomy/digestive/Intestine.htm>  
[http://www.rivm.nl/interspeciesinfo/intra/human/int\\_small/](http://www.rivm.nl/interspeciesinfo/intra/human/int_small/)

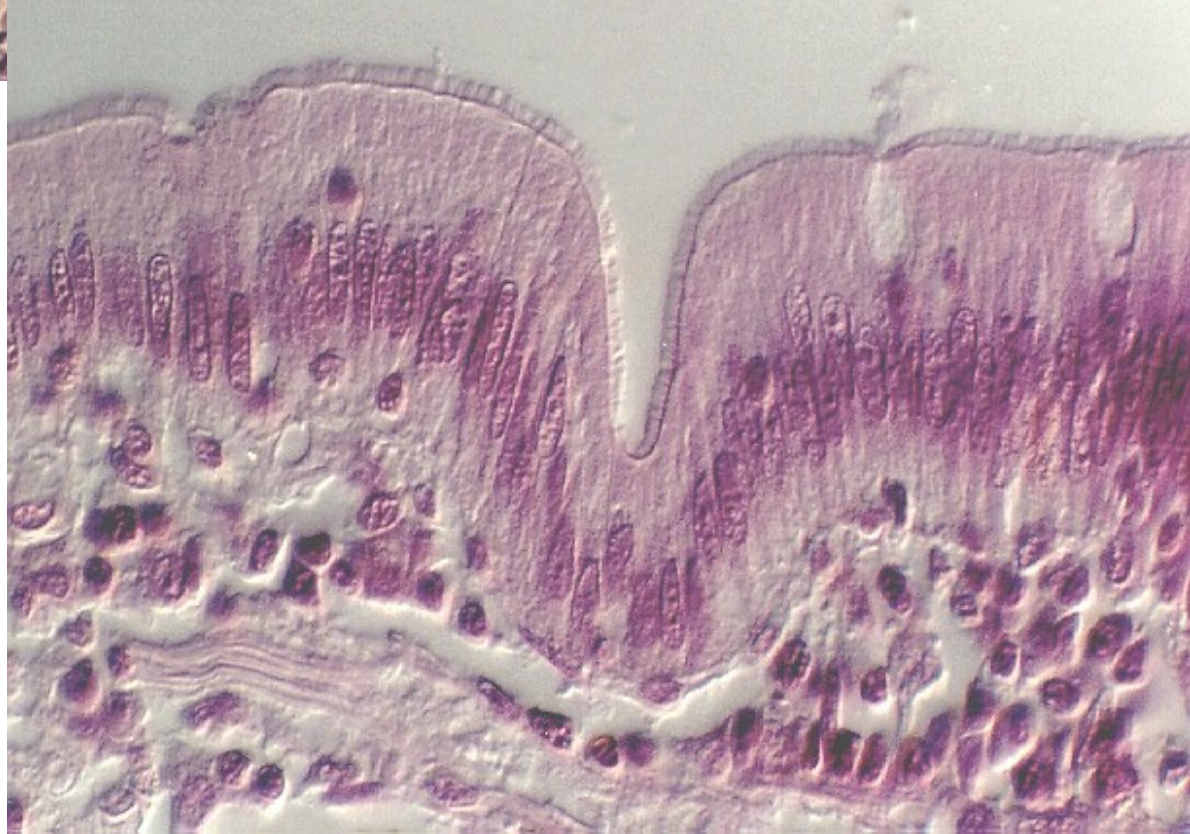


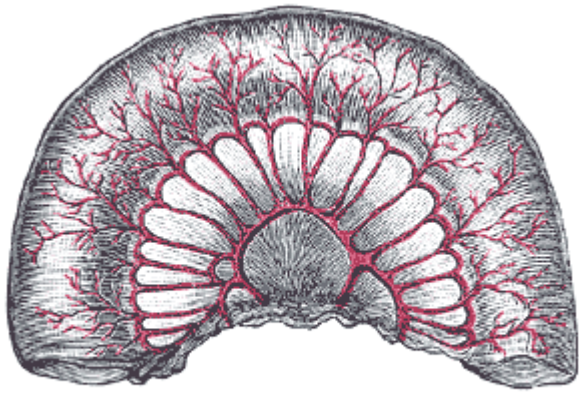


<http://cellbio.utmb.edu/microanatomy/digestive/Intestine.htm>

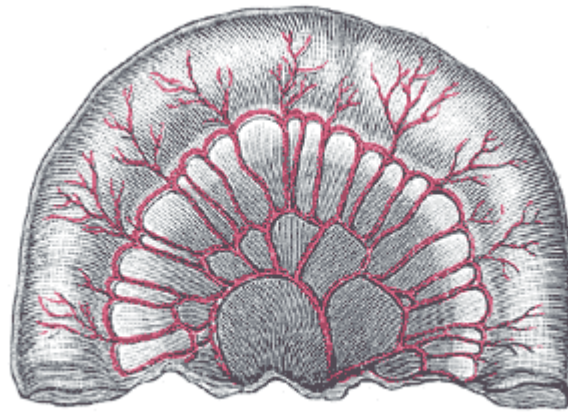


<http://cellbio.utmb.edu/micro-anatomy/digestive/Intestine.htm>  
<http://www.arthursclipart.com/medical/digesbw.htm>

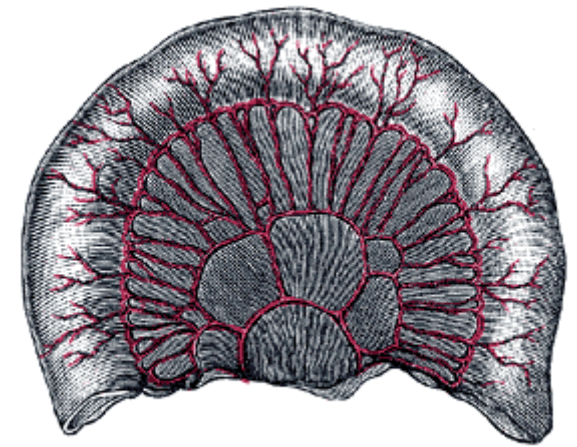




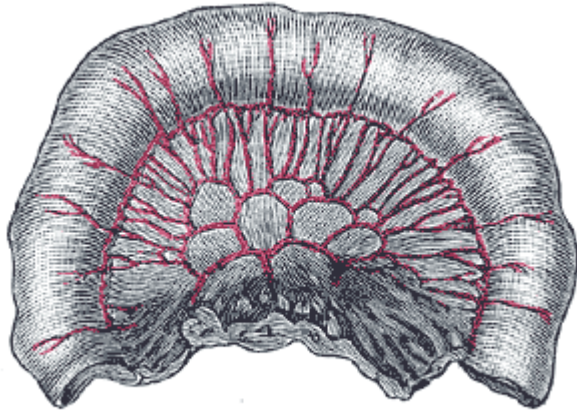
Three feet.



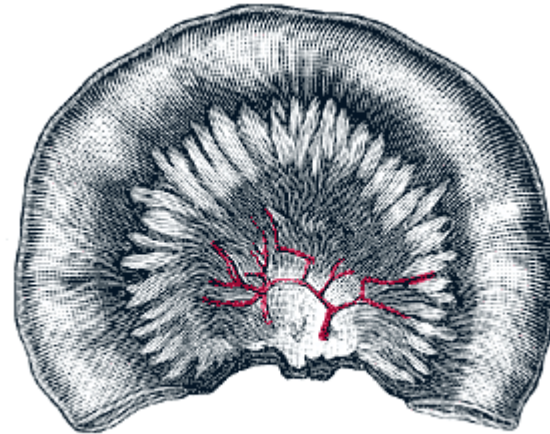
Six feet.



Nine feet.

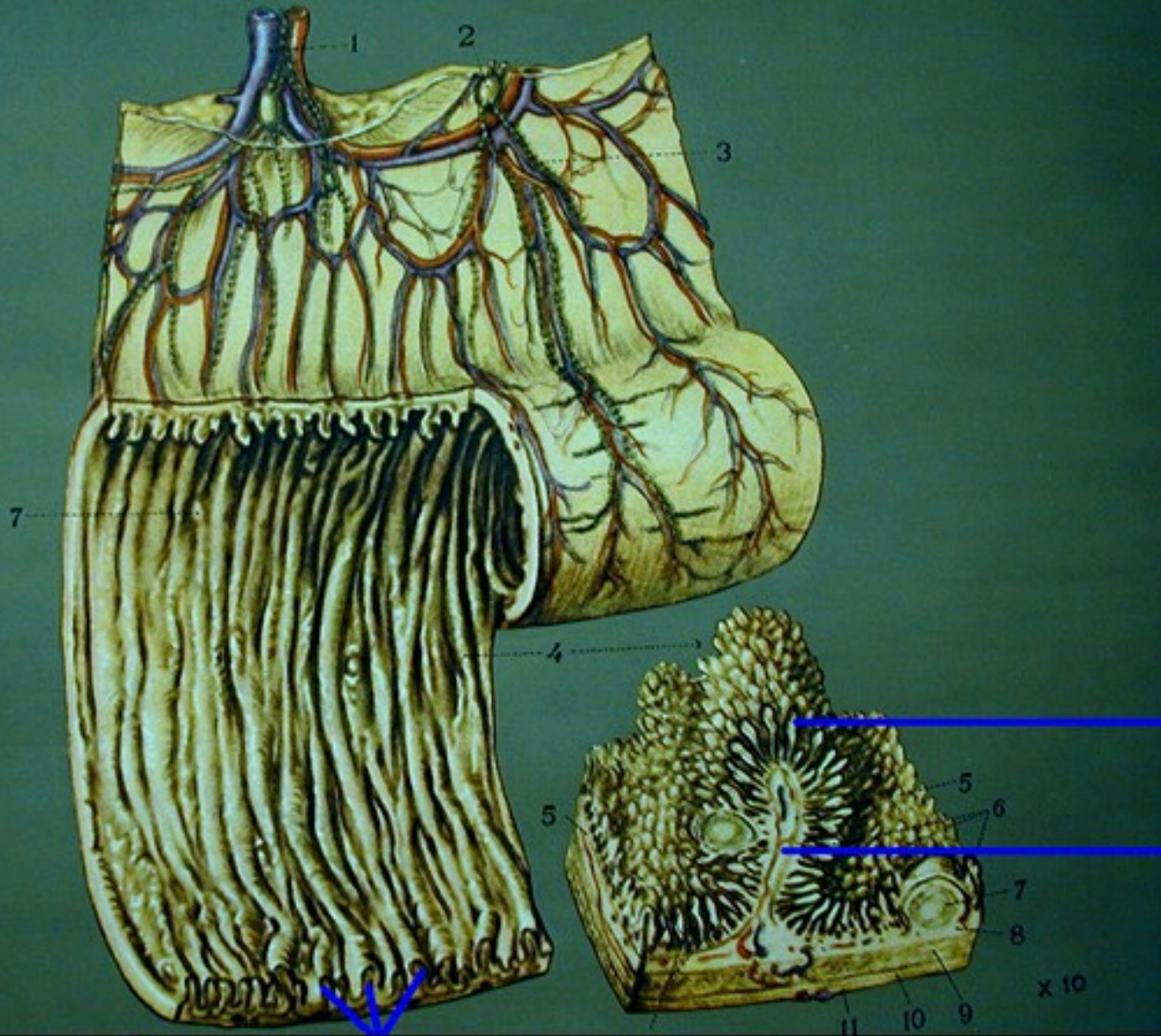


Twelve feet.



Twenty feet.

1065-1070



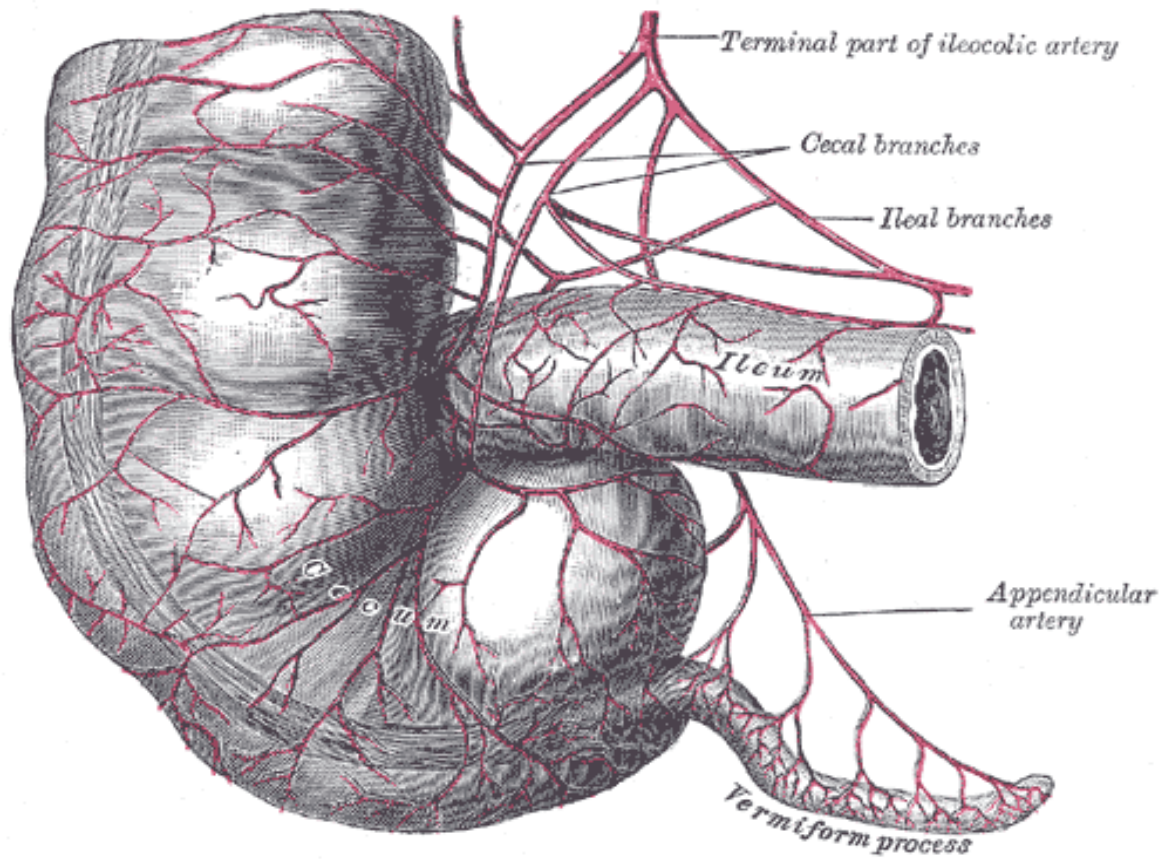
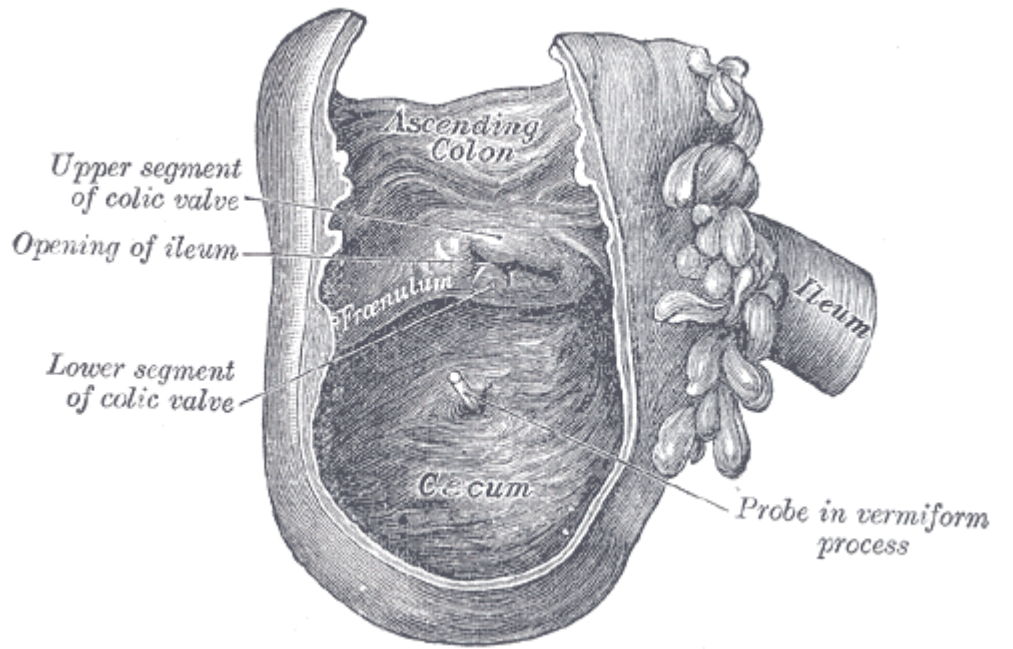
Villus

Circular Fold

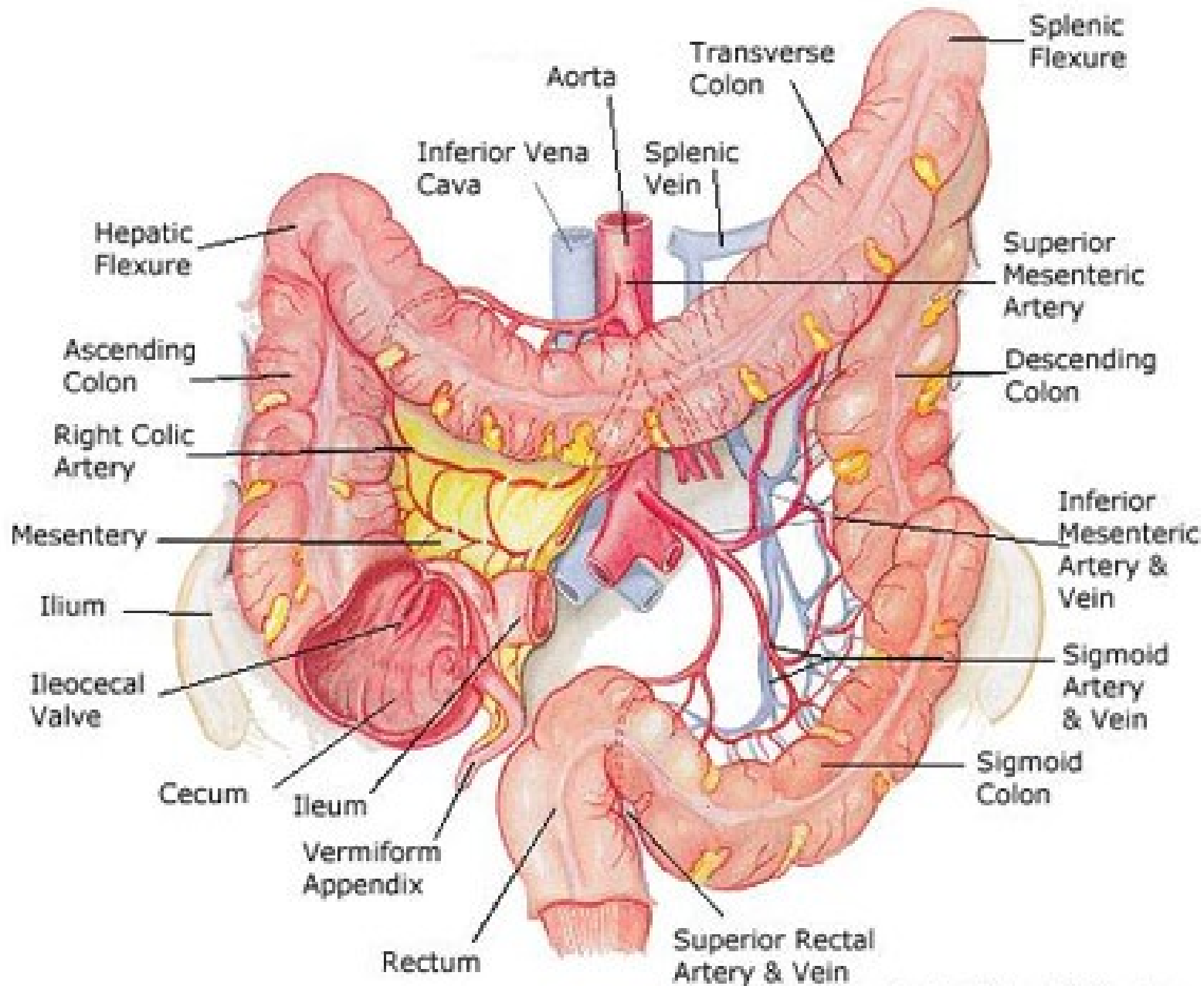
Circular Folds

[http://kcfac.kilgore.cc.tx.us/kcap2/digestive chart small intestine structures sized.jpg](http://kcfac.kilgore.cc.tx.us/kcap2/digestive%20chart%20small%20intestine%20structures%20sized.jpg)

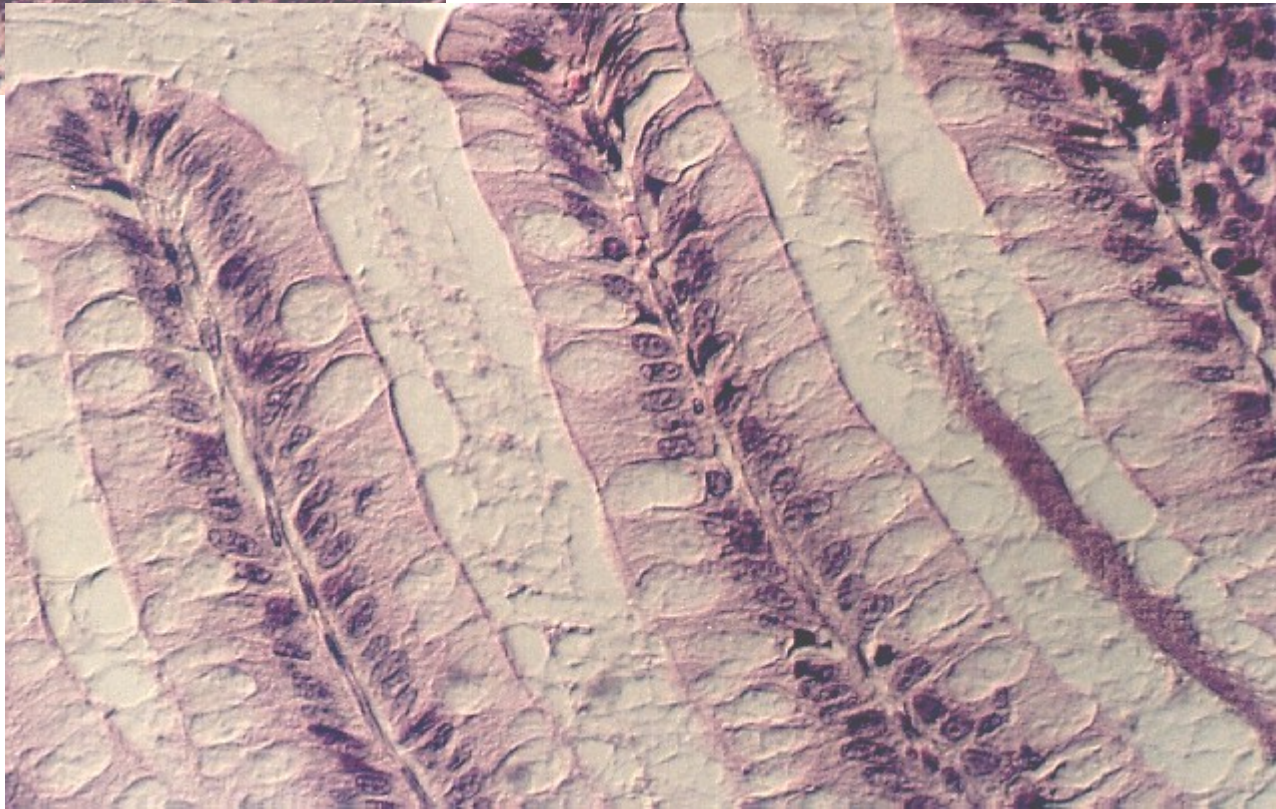




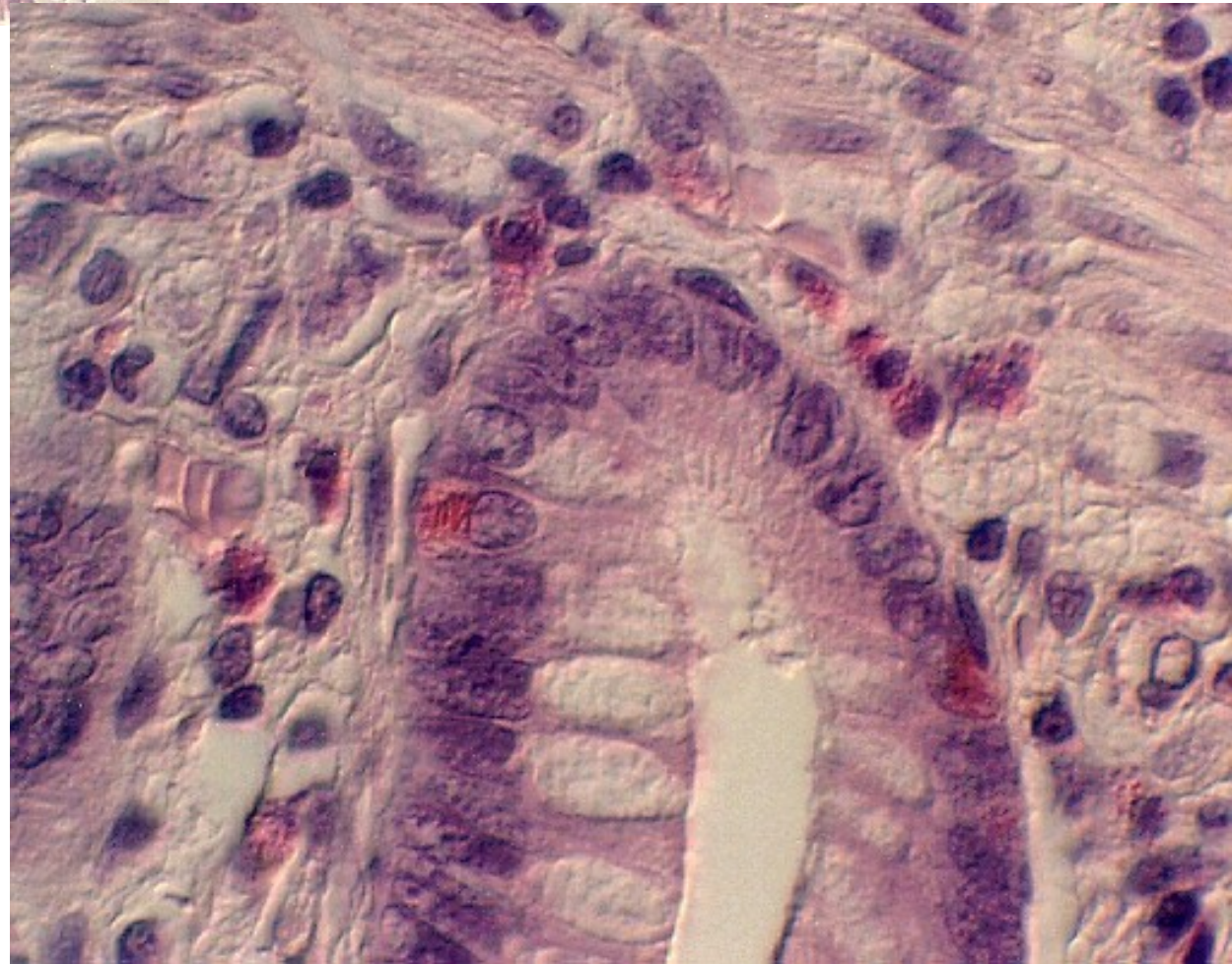
1073, 1075



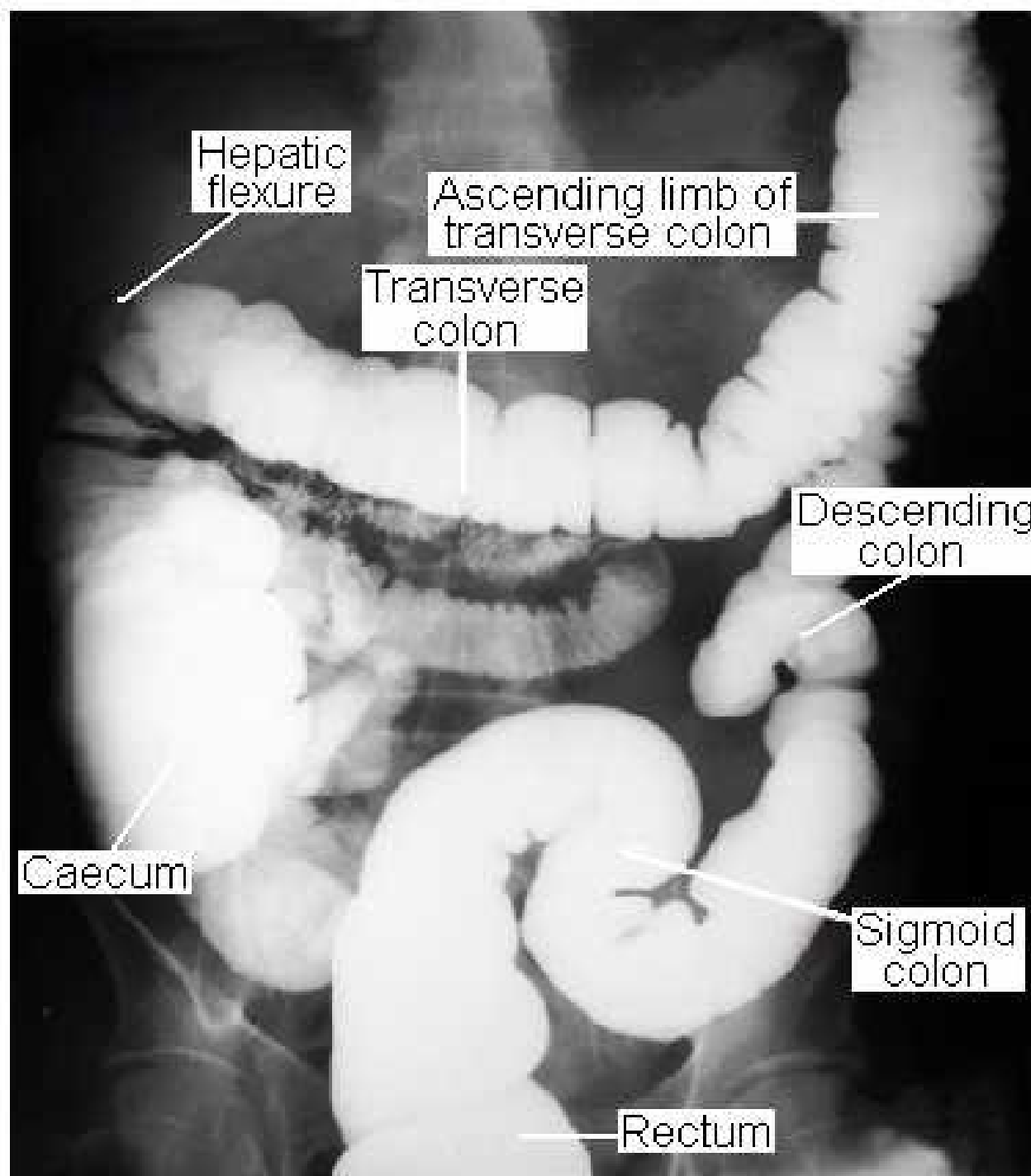
adapted from Thibodeau



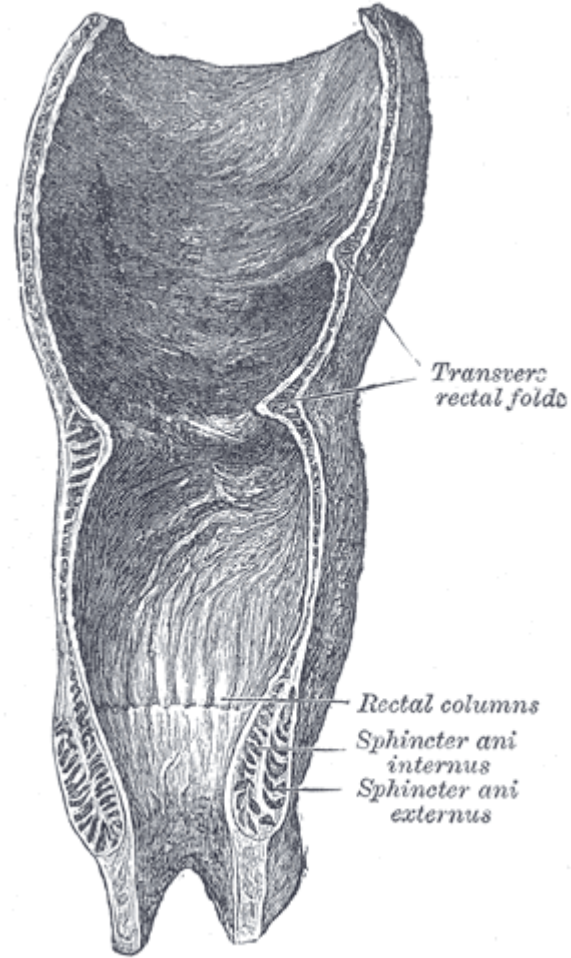
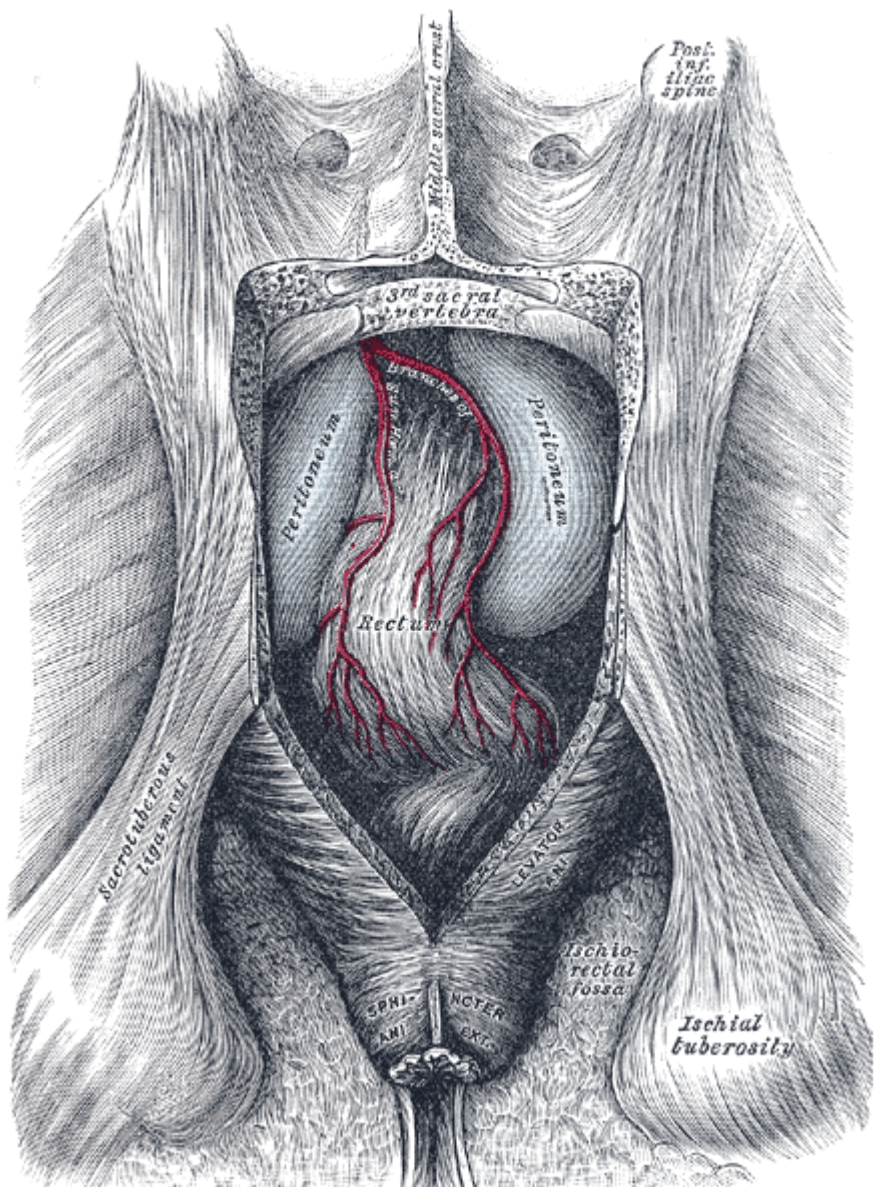
[http://cellbio.utmb.edu/  
microanatomy/digestive/  
Intestine.htm](http://cellbio.utmb.edu/microanatomy/digestive/Intestine.htm)



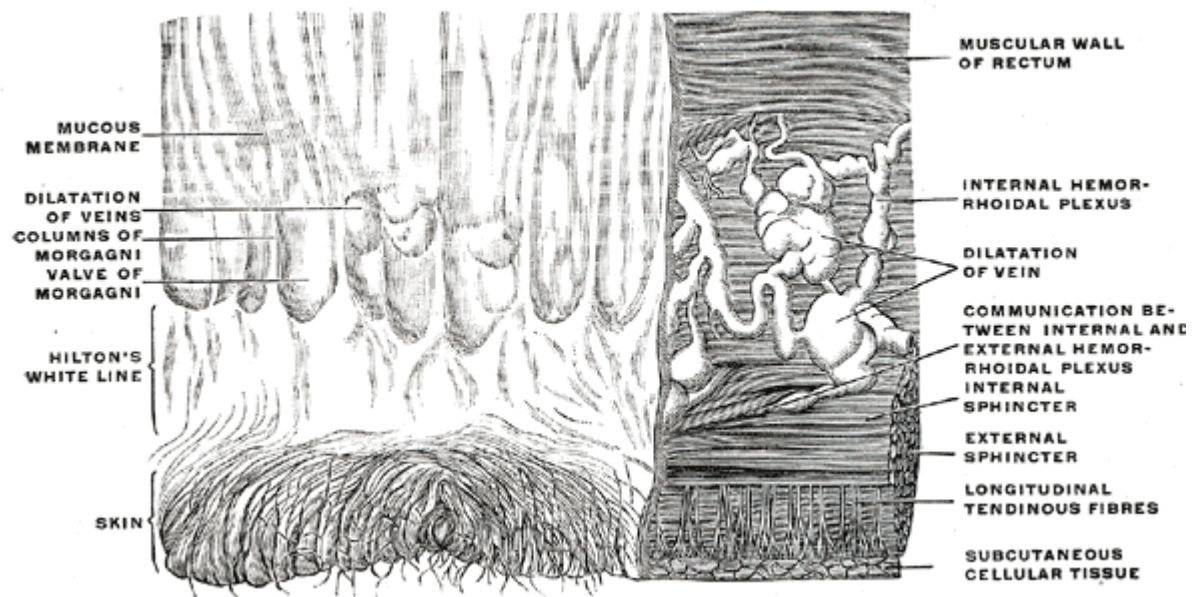
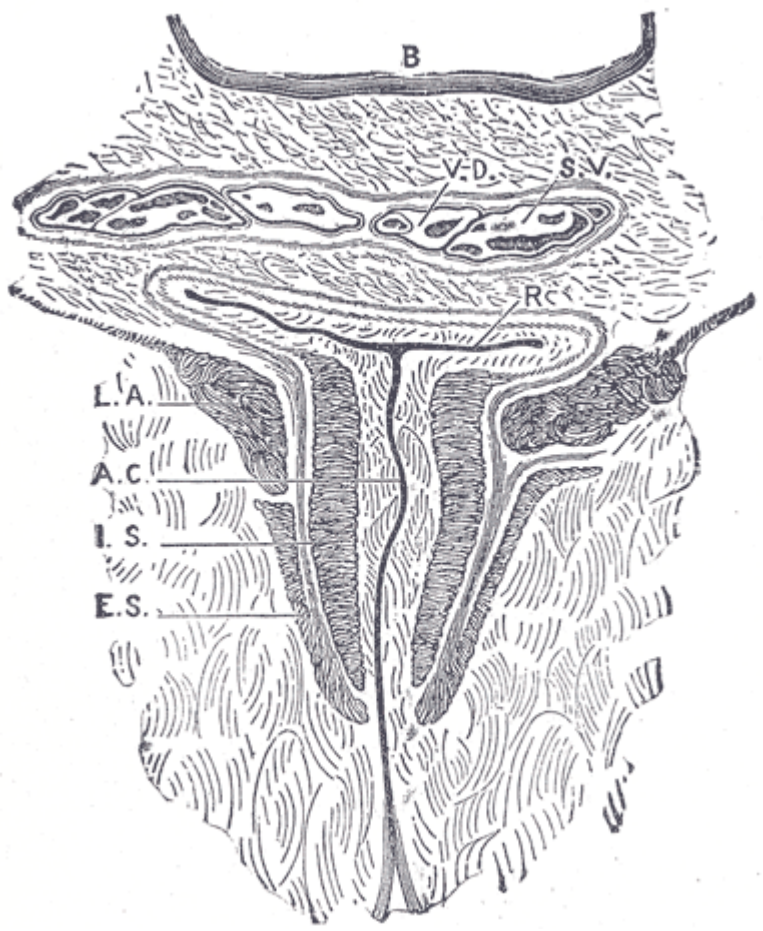
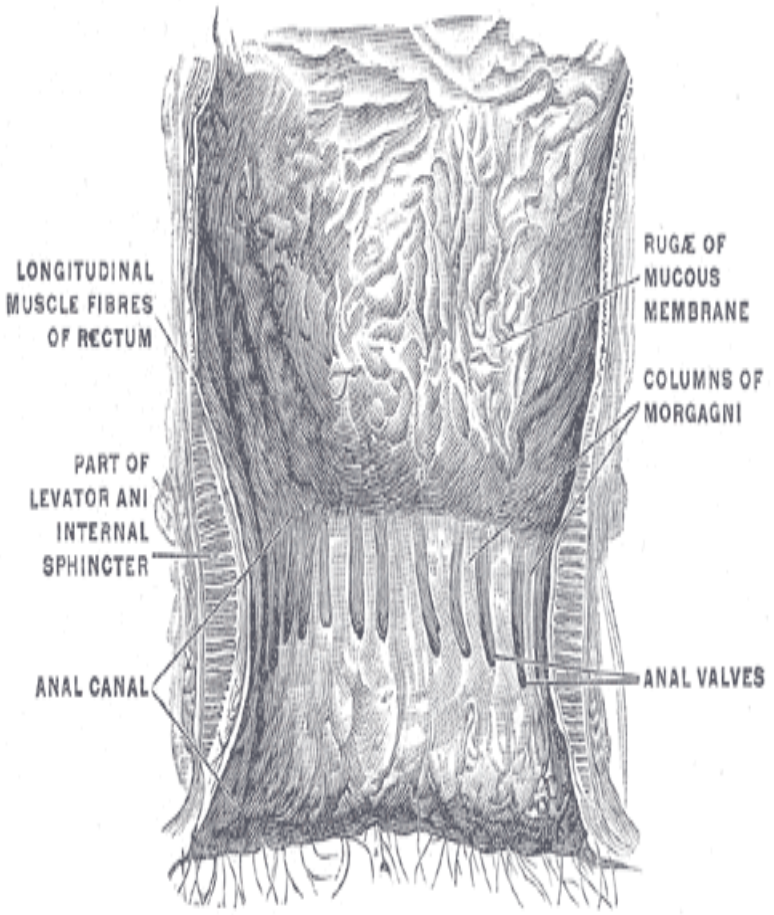
<http://cellbio.utmb.edu/microanatomy/digestive/Intestine.htm>



<http://137.222.110.150/calnet/git/page3.htm>



1077, 1078



1079, 1080, 1081

