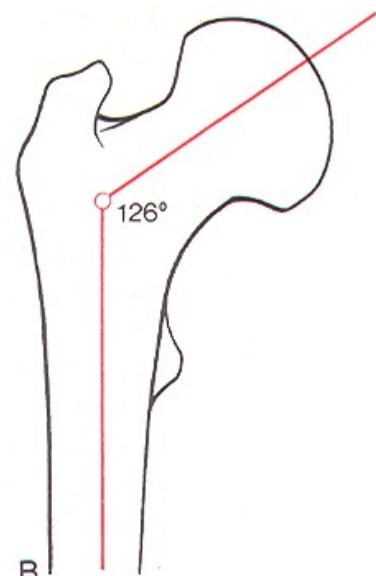


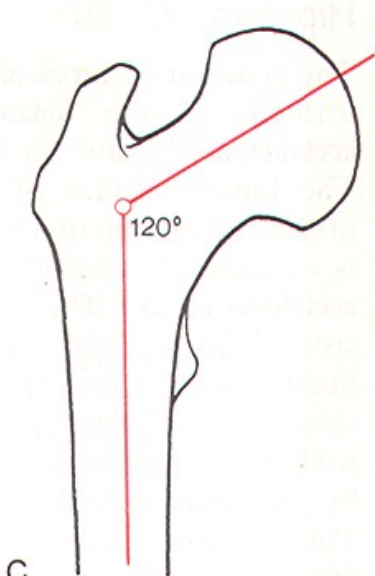




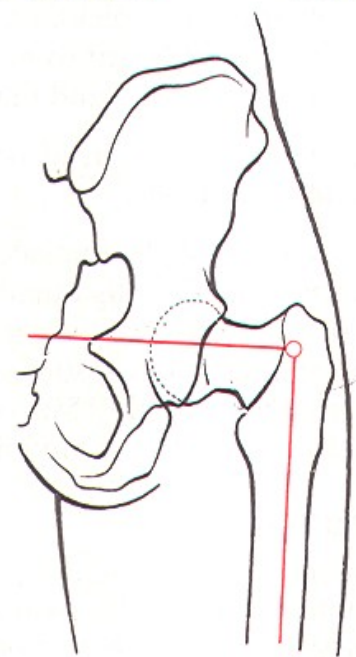
A  
Angle of inclination  
in 3-year-old child



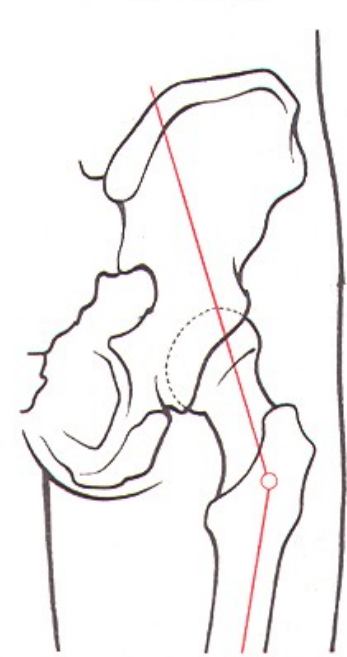
B  
Angle of inclination  
in adult



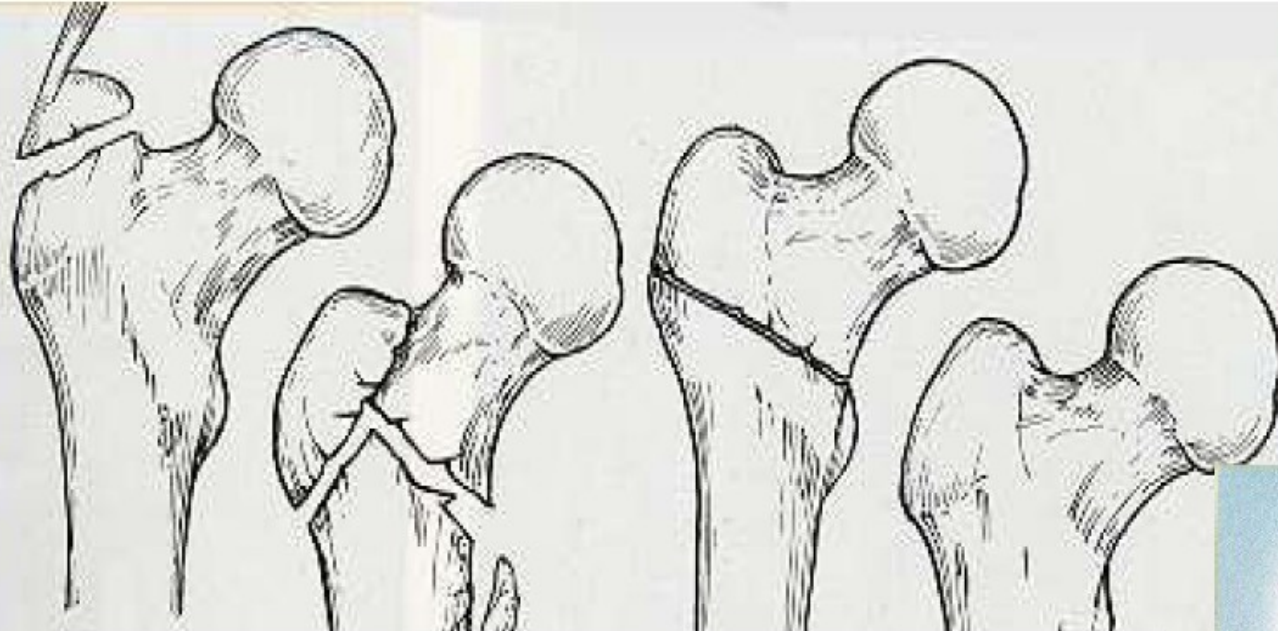
C  
Angle of inclination  
in old age



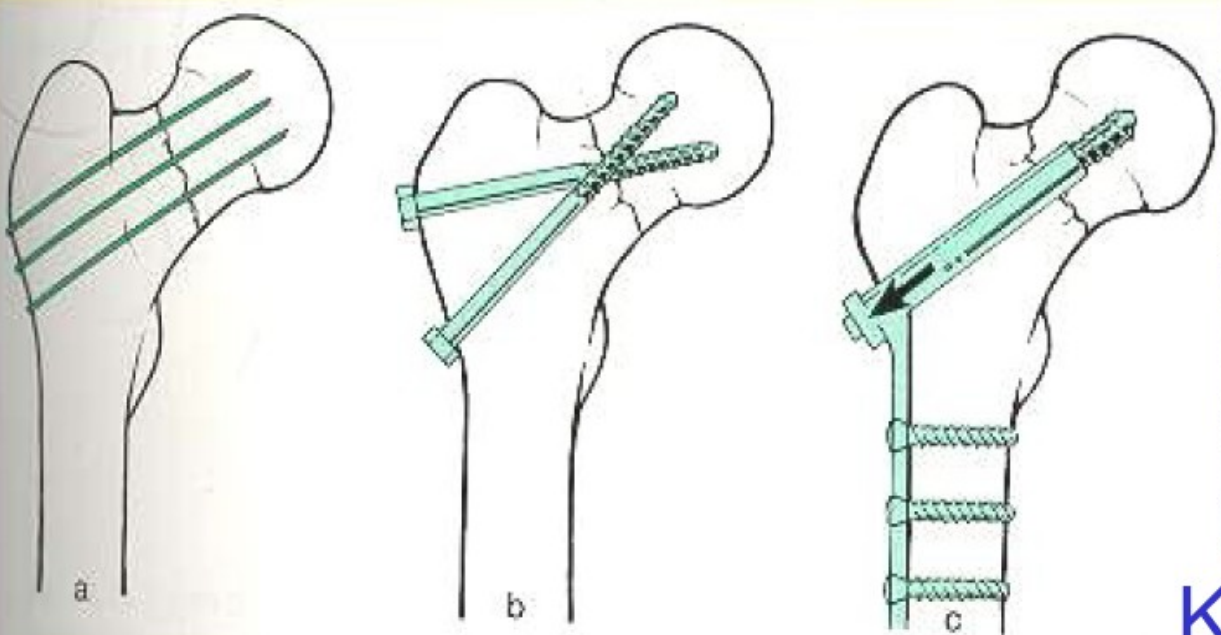
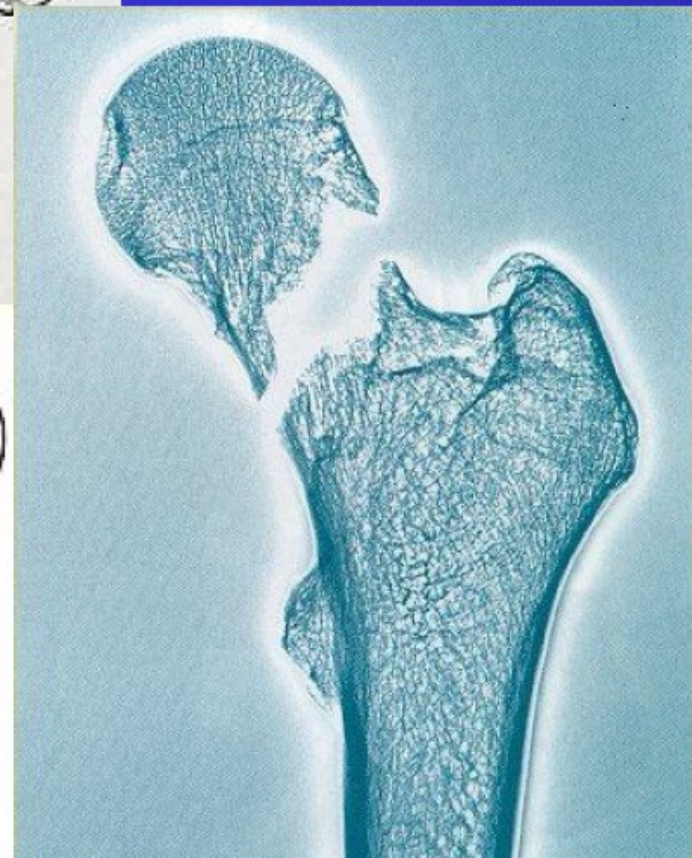
D Coxa vara



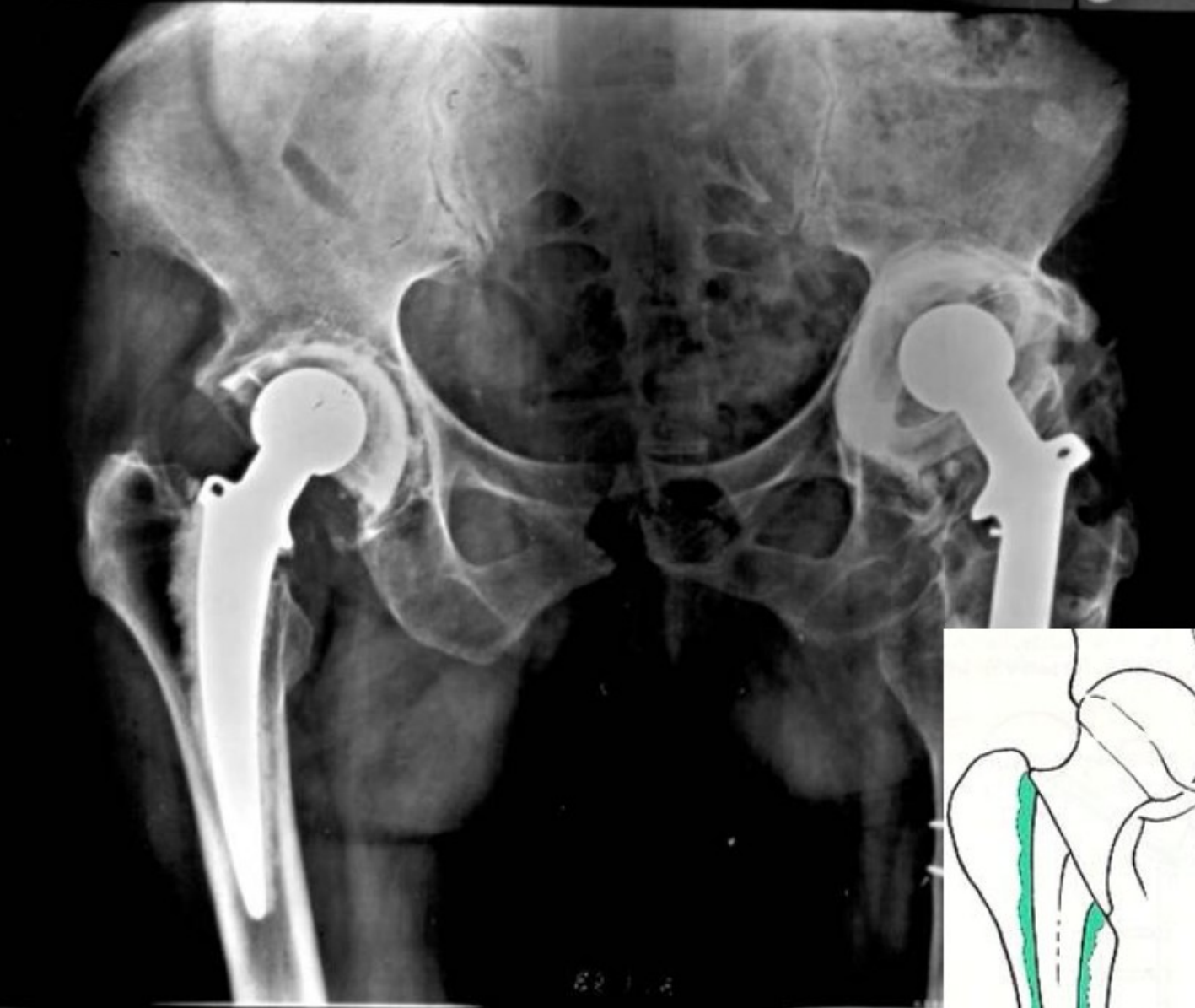
E Coxa valga



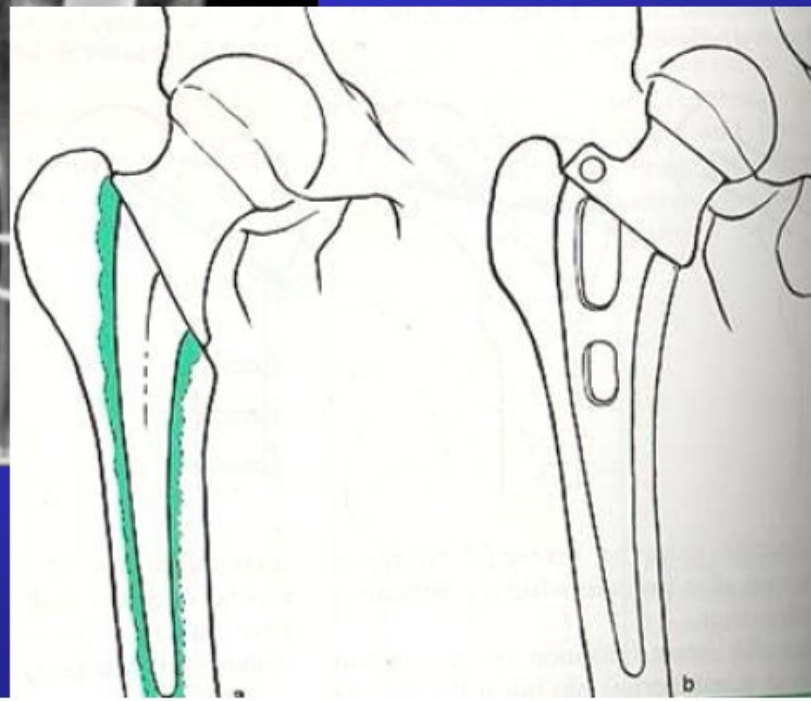
Typy zlomenin krčku femuru



Karel IV – 1316-78

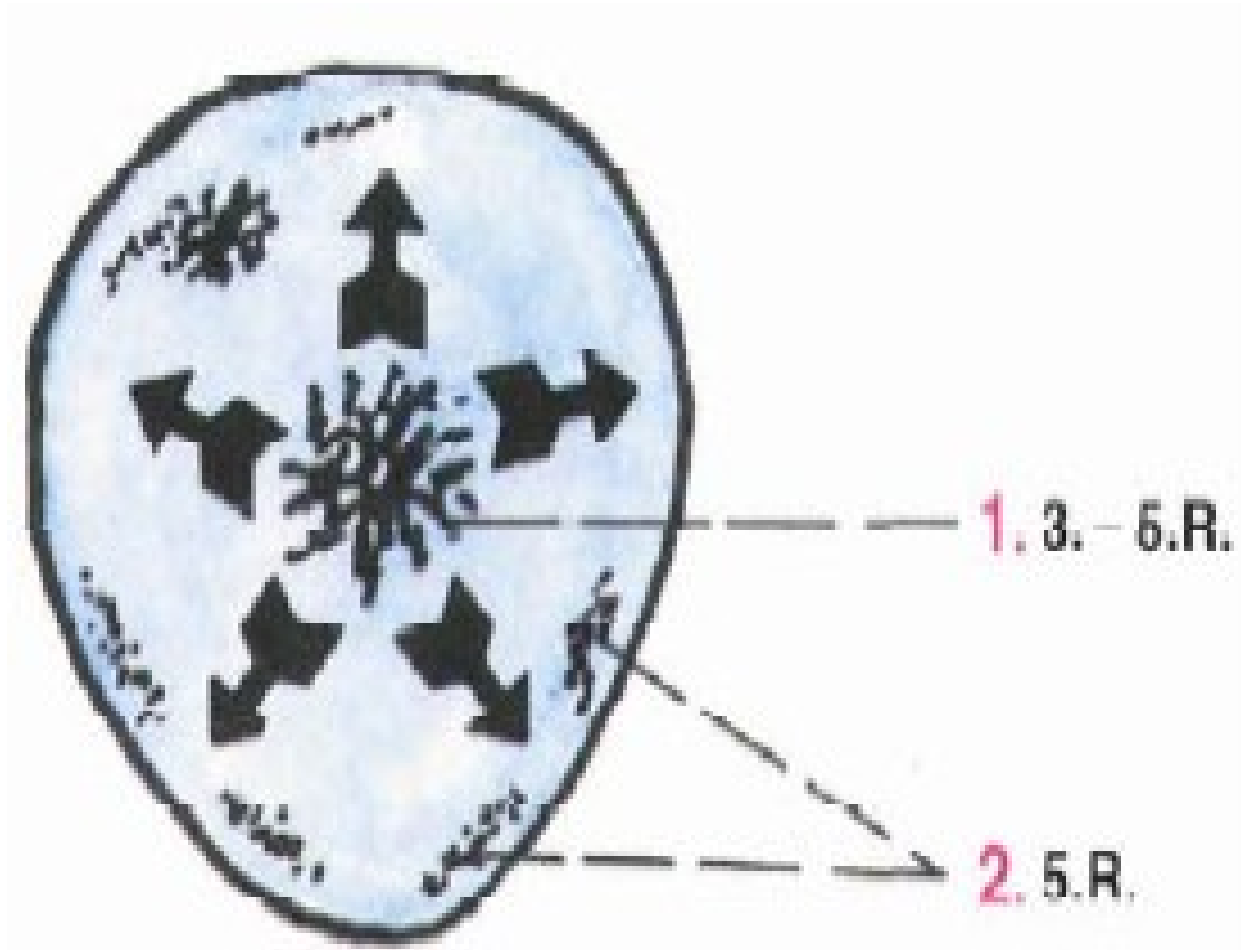


**Totální endoprotéza  
kyčelního kloubu**

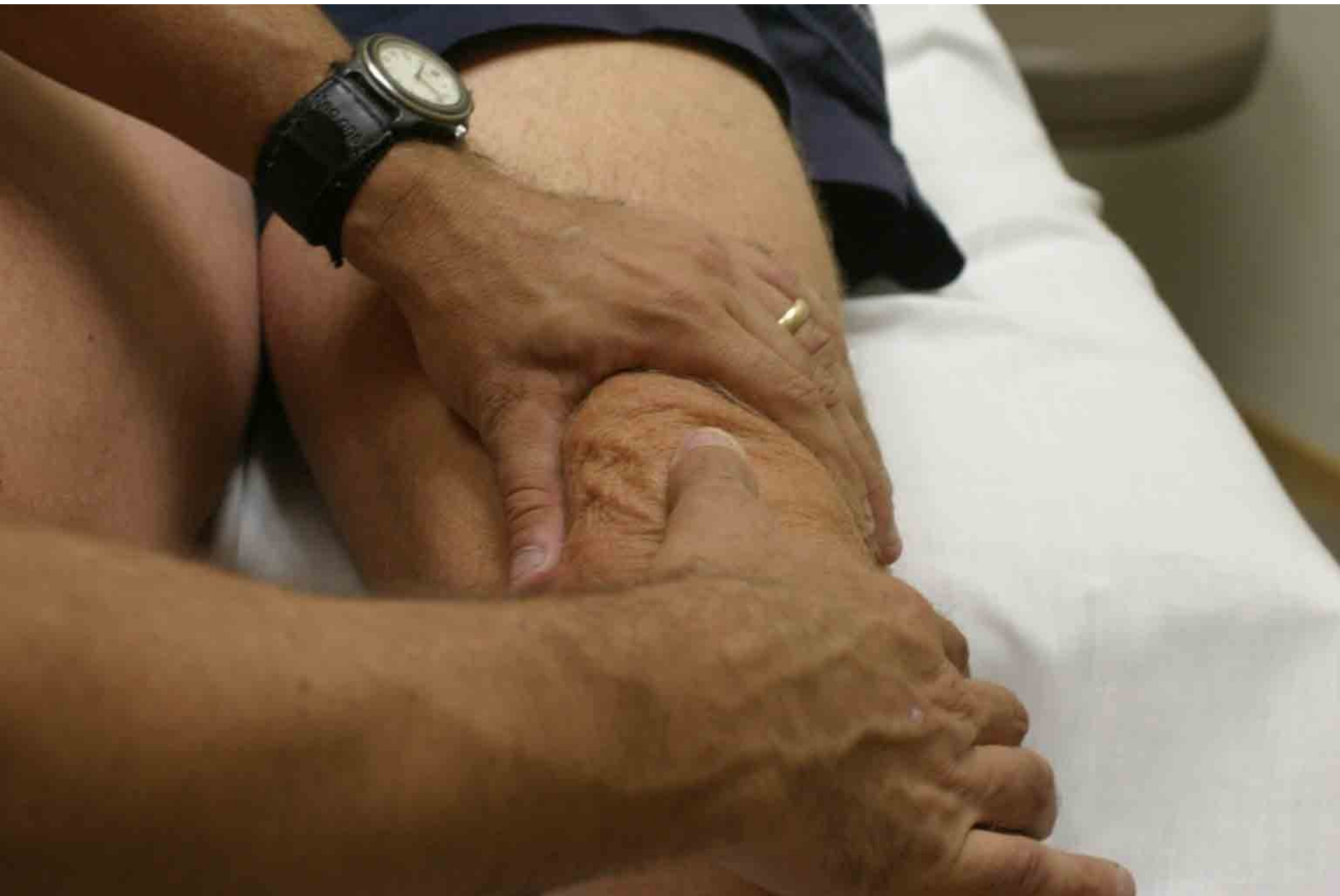




# OSIFIKACE PATELLY







# Ossa sesamoidea

## Patella

Pod hlavicí palcového metatarsu-

2- laterální a mediální- u

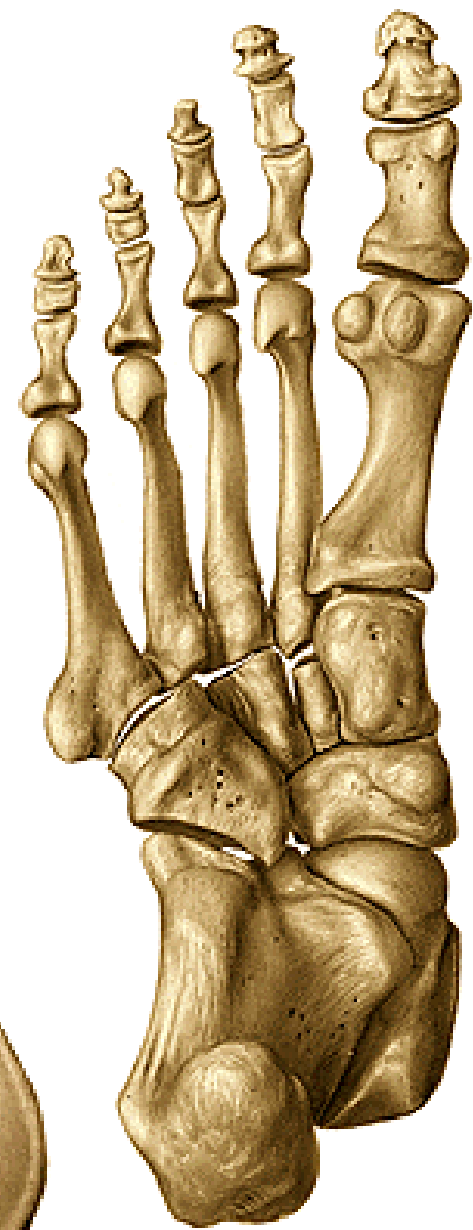
**metatarsophalangového kloubu**

Občas i pod hlavicí V. a

II.metatarsu nebo na plantární

ploše os cuboideum ve šlaše

m.peroneus longus





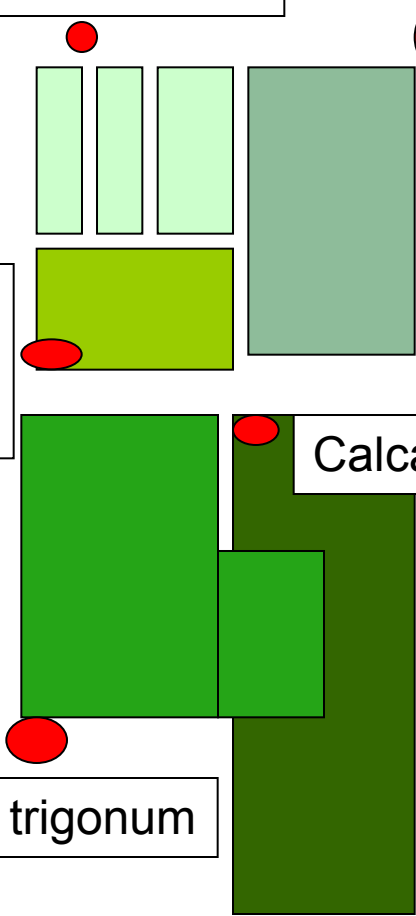
Os intermetatarsale

Os Vesali

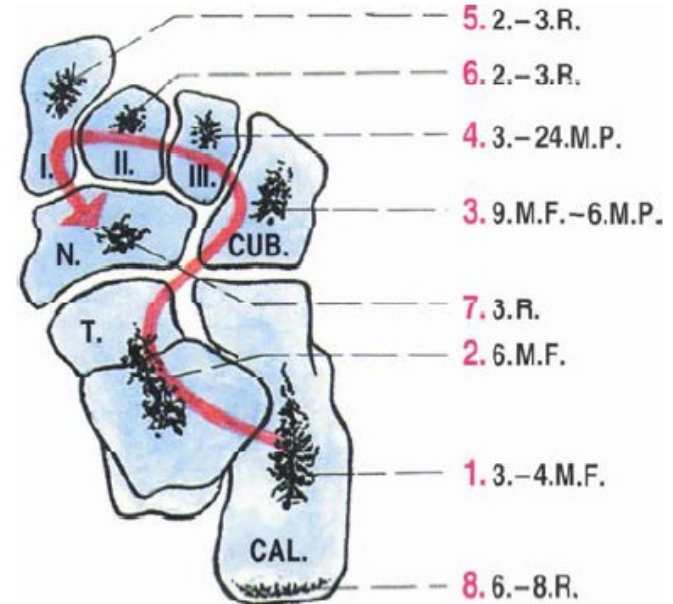
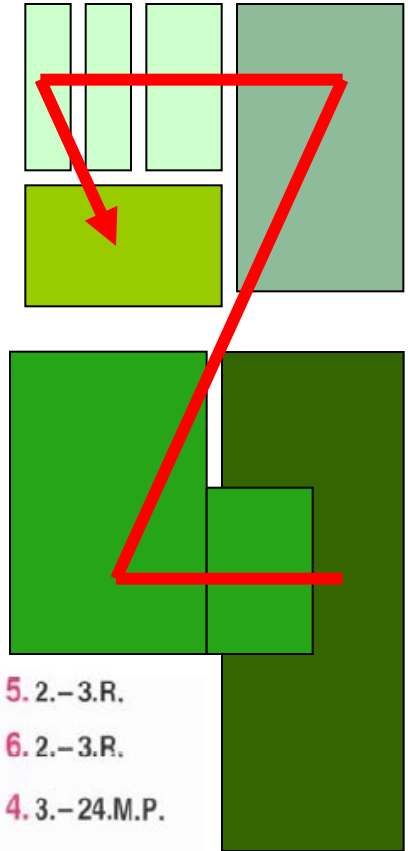
Os tibiale  
exter.

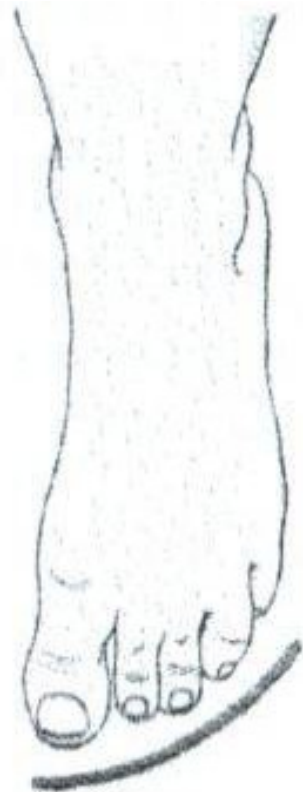
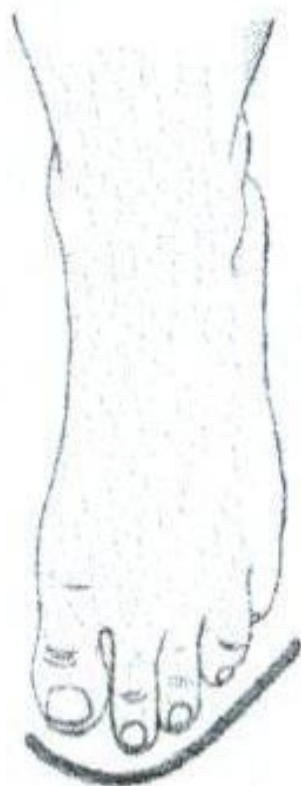
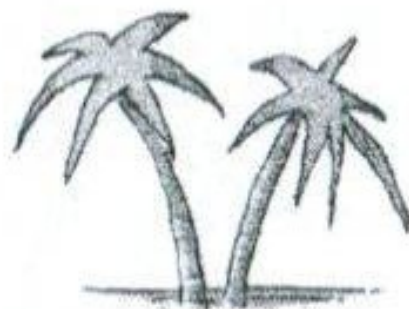
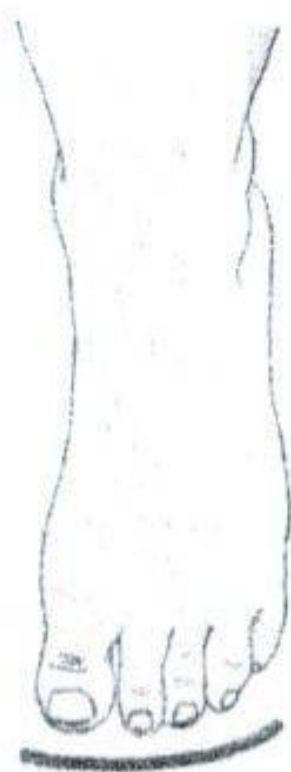
Calcaneus accesorius

Os trigonum



osifikace



**a****b****c**

**Obr. 51B. Typy nohou: egyptská noha (a), řecká noha (b), polynéská noha (c)**

# Hallux valgus

