

ORGANUM VESTIBULOCOCHLEARE

Auris externa

Auricula

Meatus acusticus externus

Membrana tympani

Auris media

Cavitas tympani

Cellulae mastoideae

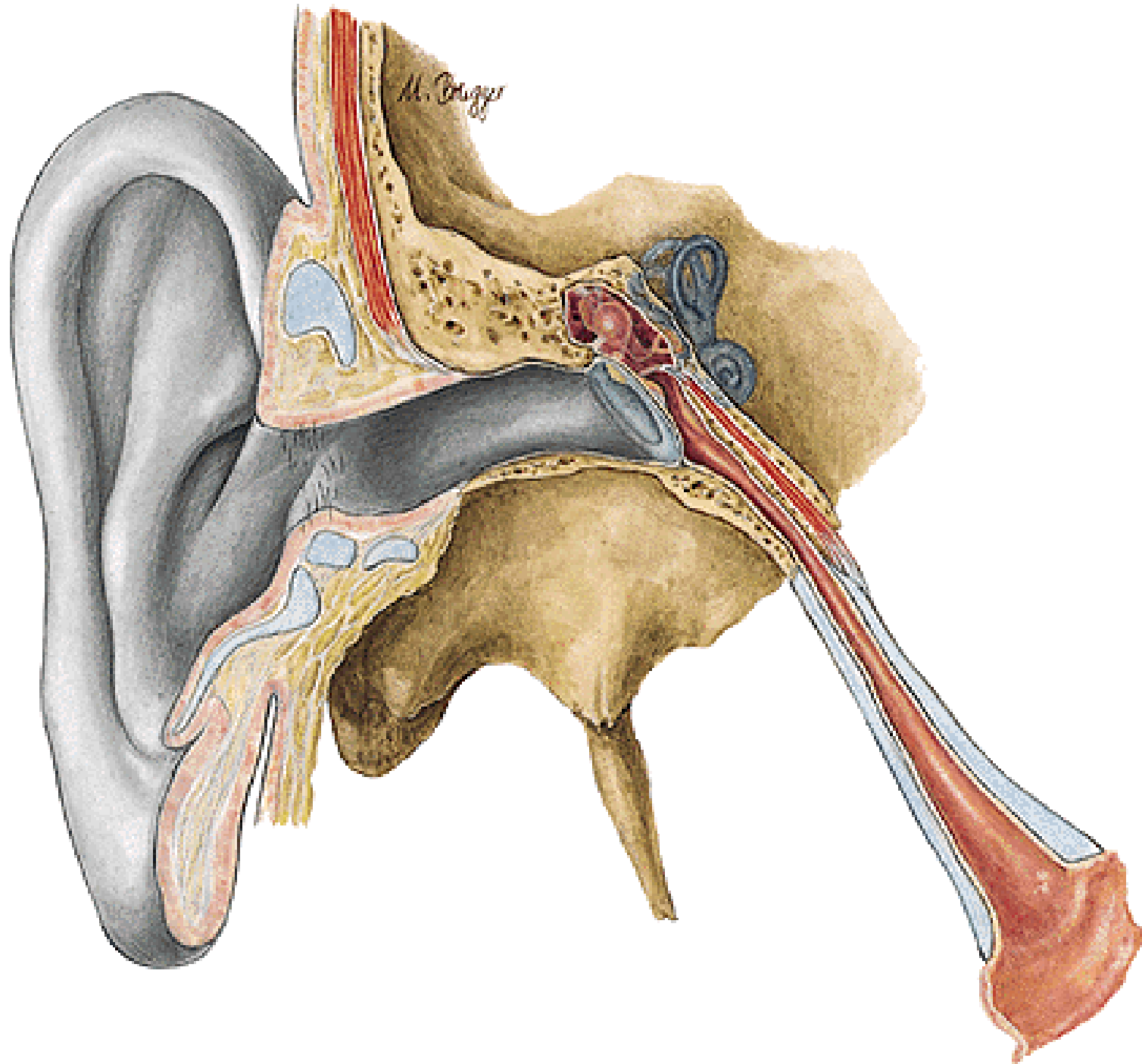
Ossicula auditus

Tuba auditiva

Auris interna

Labyrinthus osseus

Labyrinthus membranaceus



AURICULA

HELIX - CRUS

TUBERCULUM AURICULAE

ANTHELIX

CRURA ANTHELICIA

FOSSA TRIANGULARIS

SCAPHA

CONCHA AURICULAE

- CYMBA CONCHAE

- CAVUM CONCHAE

TRAGUS

ANTITRAGUS

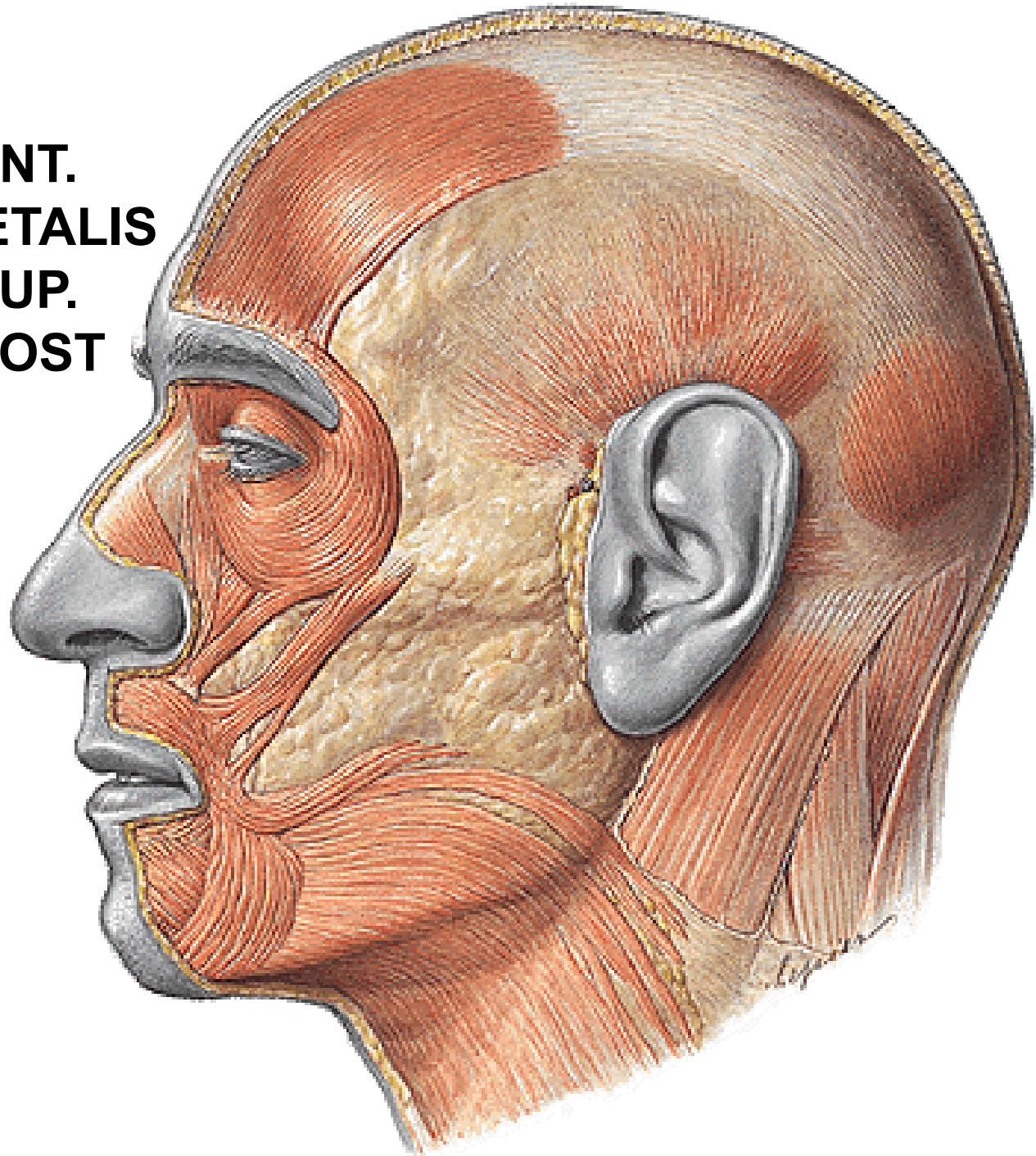
INCISURA INTERTRAGICA

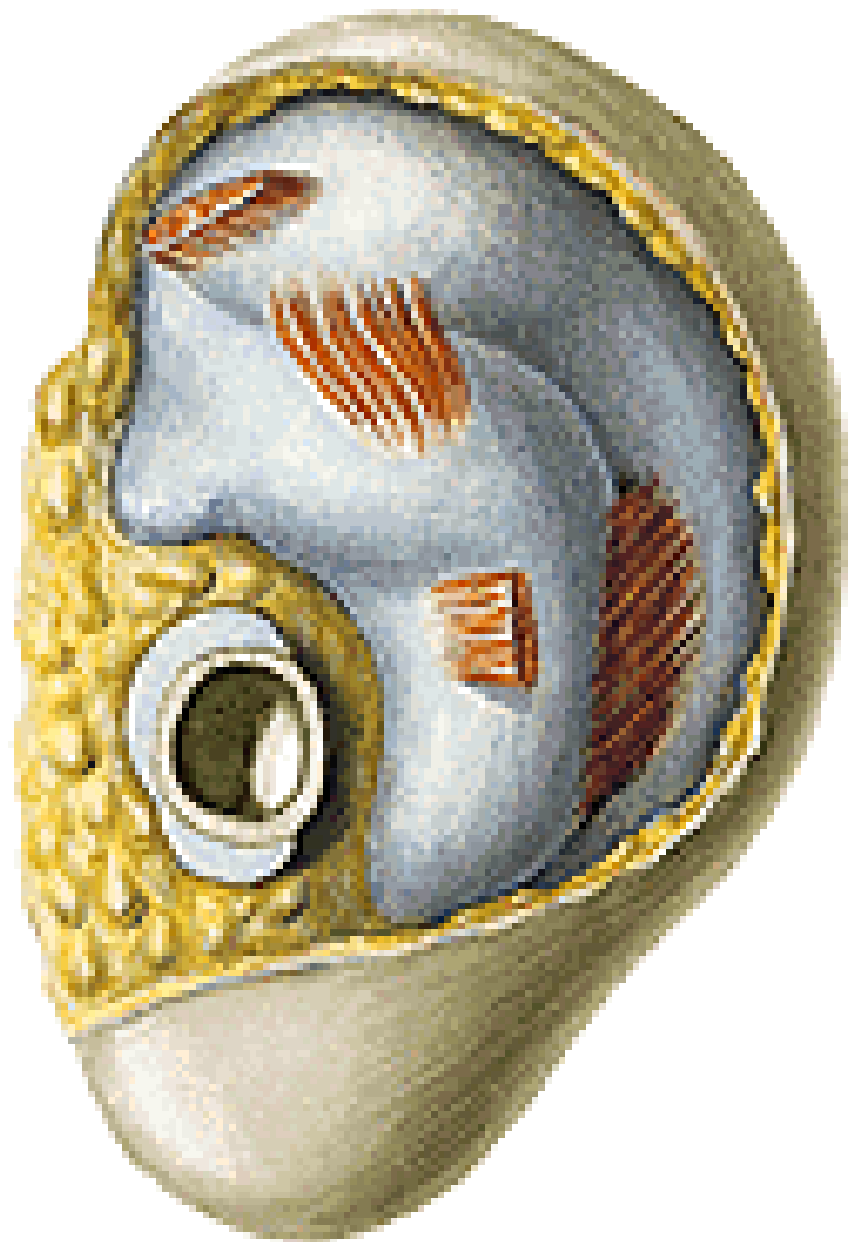
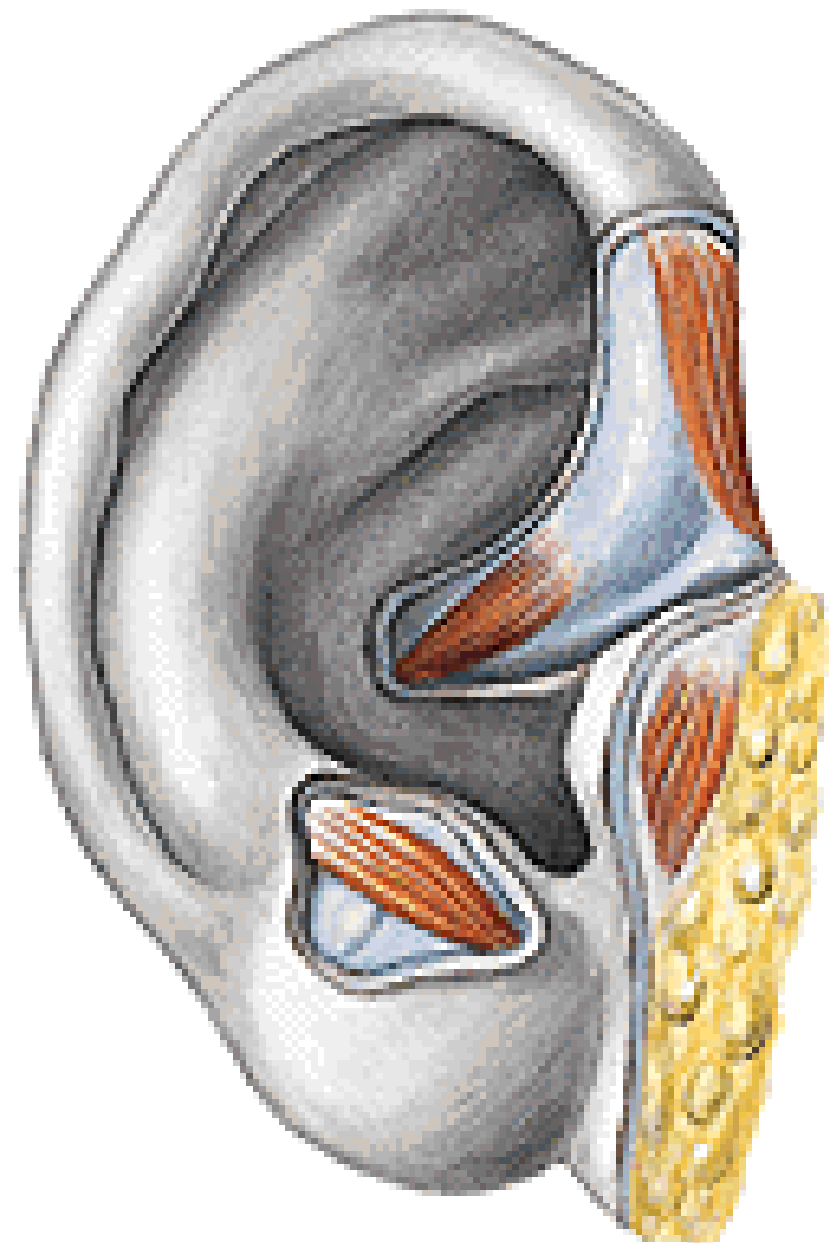
LOBULUS AURICULAE

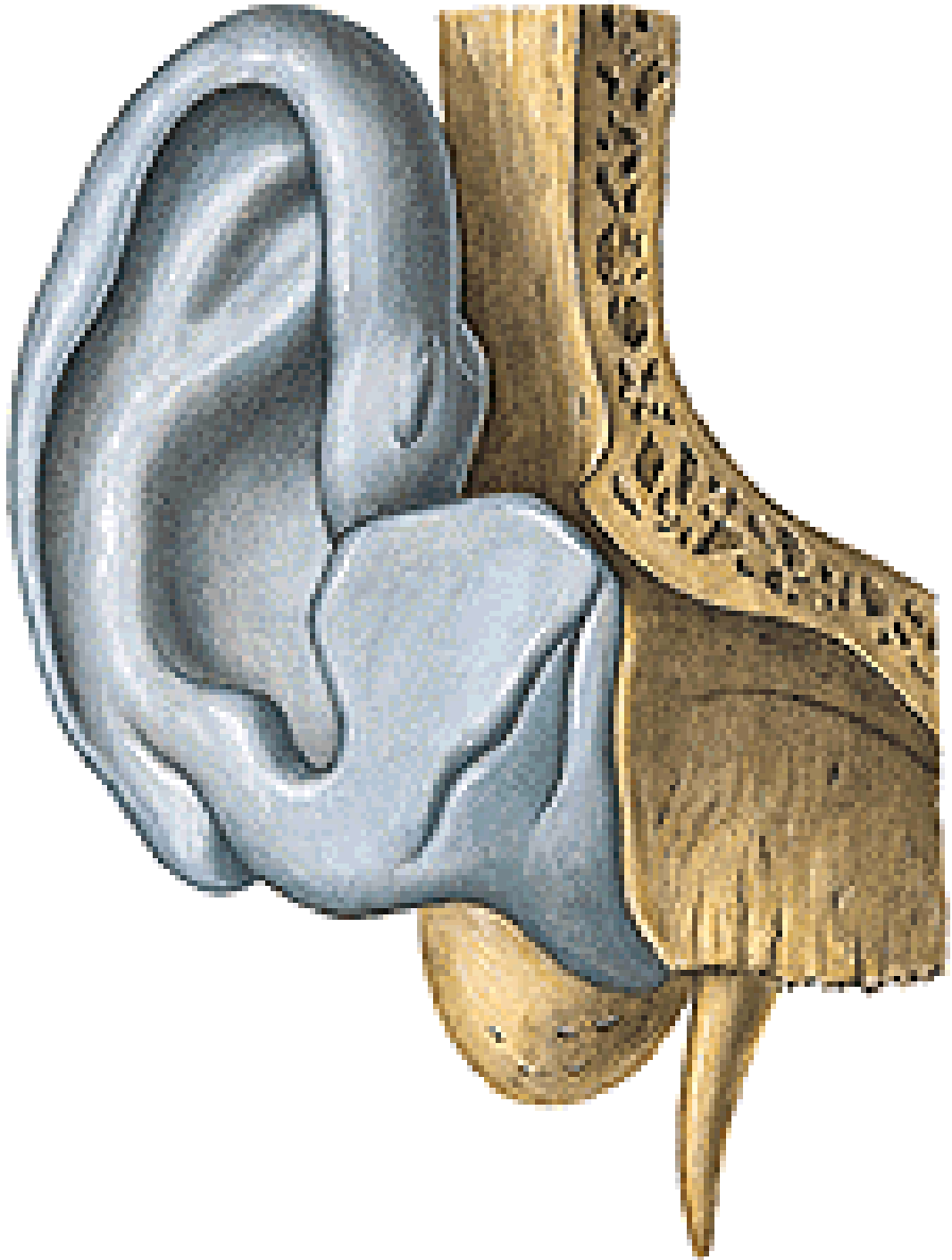


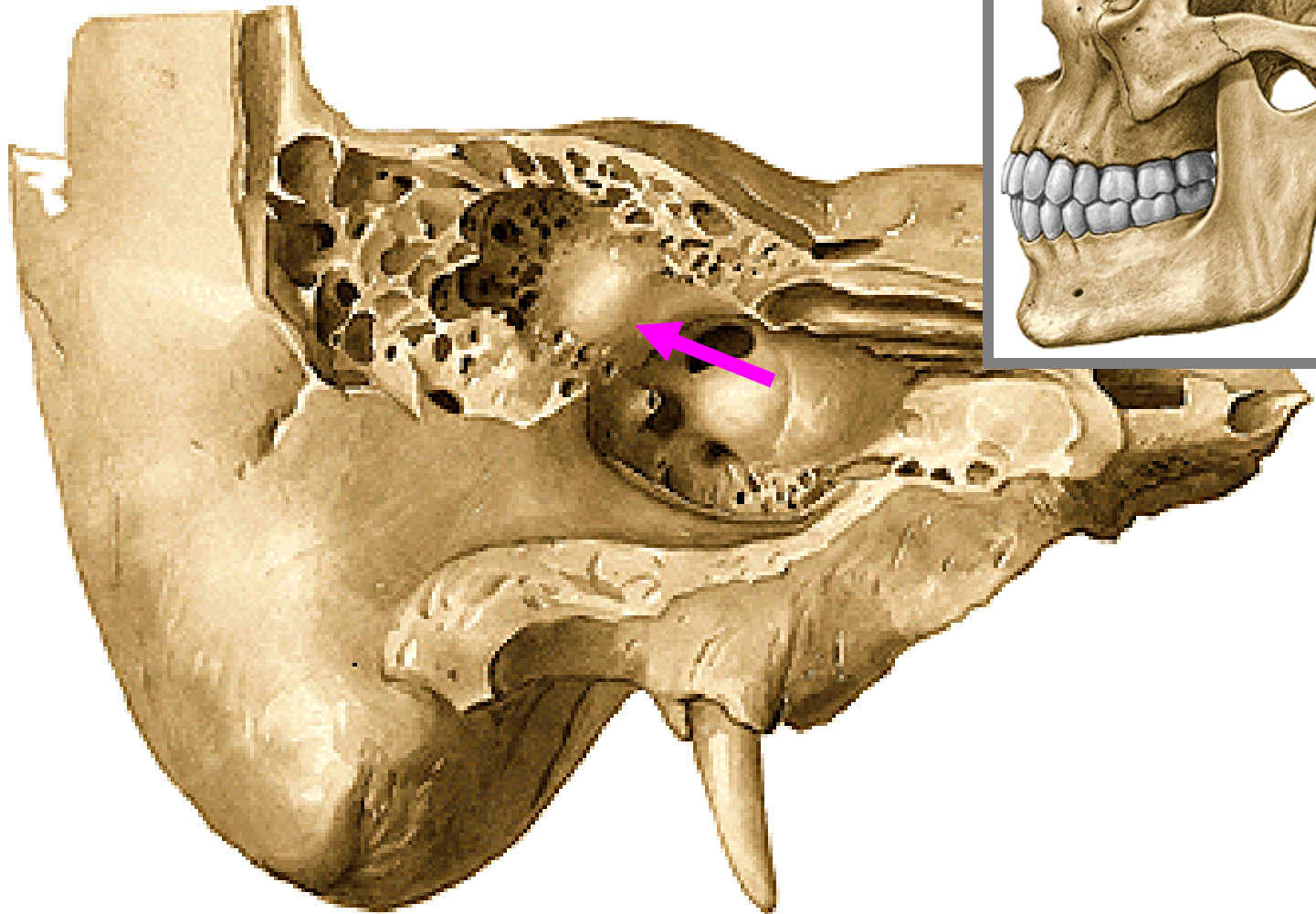
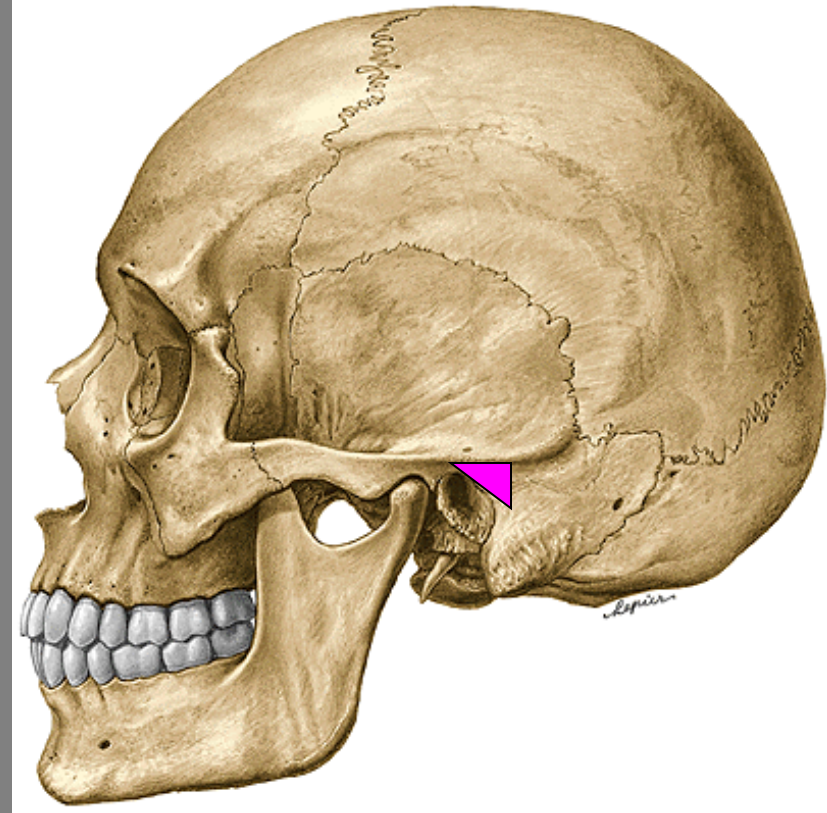


M. AURICULARIS ANT.
M. TEMPOROPARIETALIS
M. AURICULARIS SUP.
M. AURICULARIS POST









AURICULA:

A. AURICULARIS POSTERIOR

RR. AURICULARES ANTERIORES A. TEMPORALIS SPF.

A. OCCIPITALIS

NODI LYMPH. PAROTIDEI

NODI LYMPH. MASTOIDEI

NODI LYMPH. CERVICALES PROFUNDI

N. AURICULARIS MAGNUS

N. OCCIPITALIS MINOR

R. AURICULARIS N. VAGI

N. AURICULOTEMPORALIS

N. FACIALIS

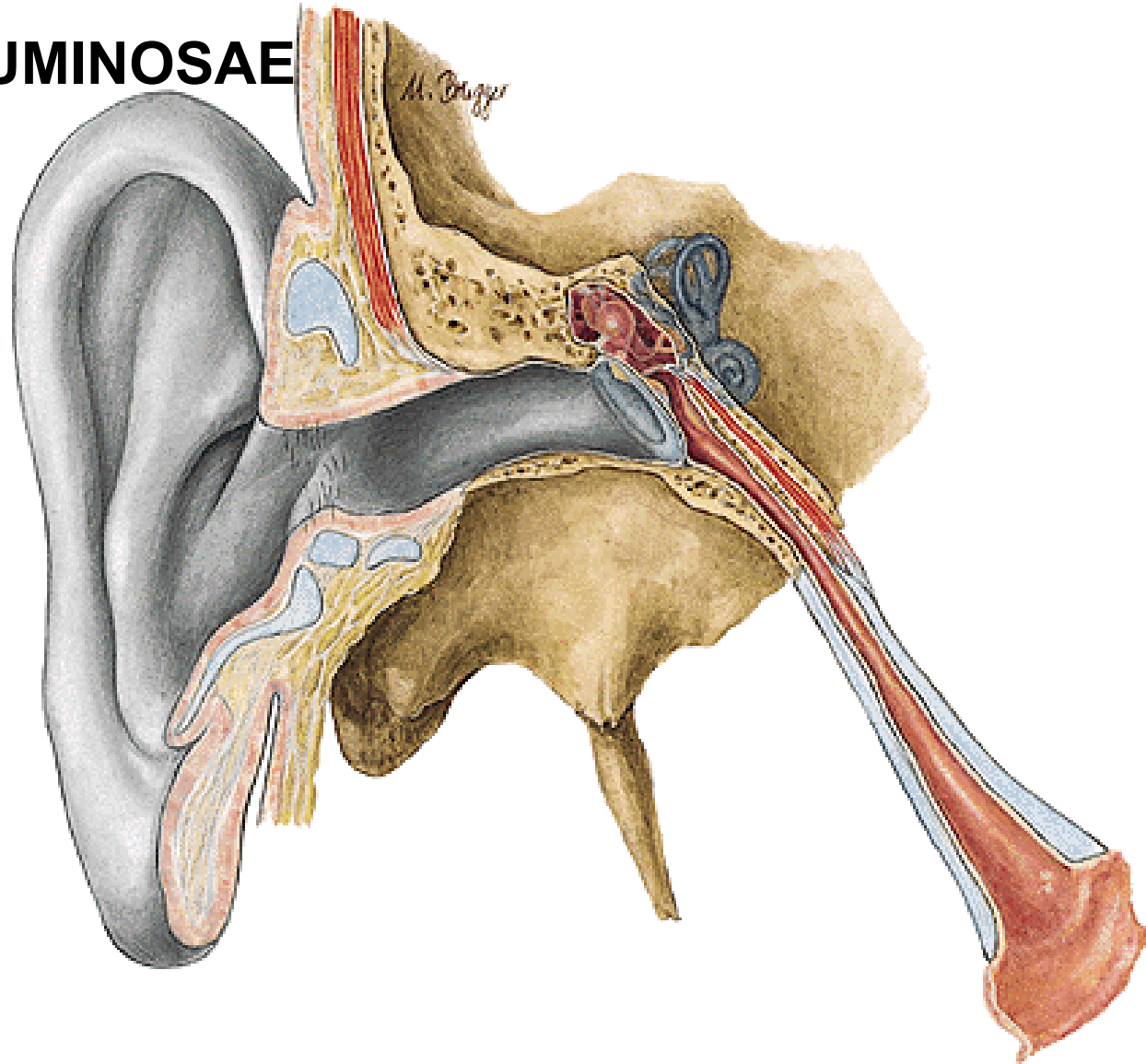
MEATUS ACUSTICUS EXTERNUS

ISTHMUS

GLANDULAE CERUMINOSAE

CERUMEN

TRAGI



**A. AURICULARIS POST.
RR. AURICULARES A. TEMPORALIS SPF.**

**V. JUGULARIS EXT.
V. MAXILLARIS
PLEXUS PTERYGOIDEUS**

**N. AURICULOTEMPORALIS
R. AURICULARIS N. VAGI**

MEMBRANA TYMPANI

External Ear

Right Tympanic Membrane

pars flaccida membranae tympani (membrana Shrapnelli)

plica mallearis anterior et posterior

prominentia mallearis

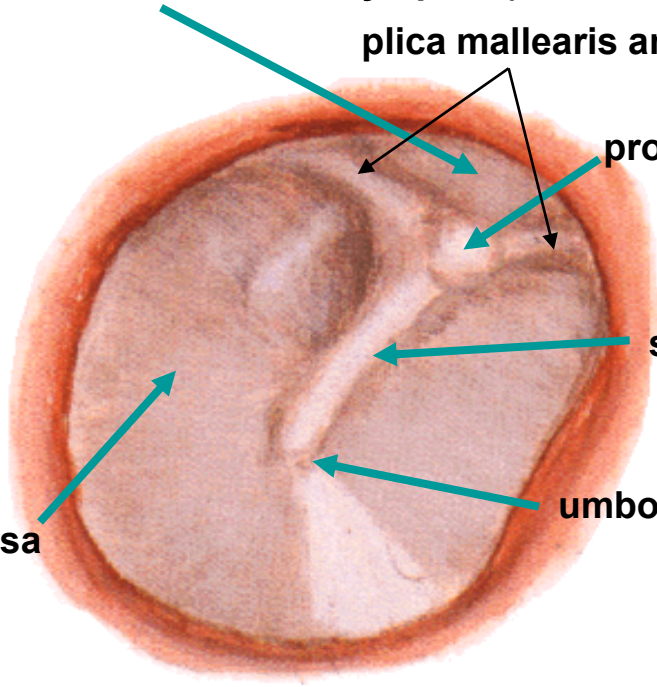
stria mallearis

umbo membranae tympani

pars tensa

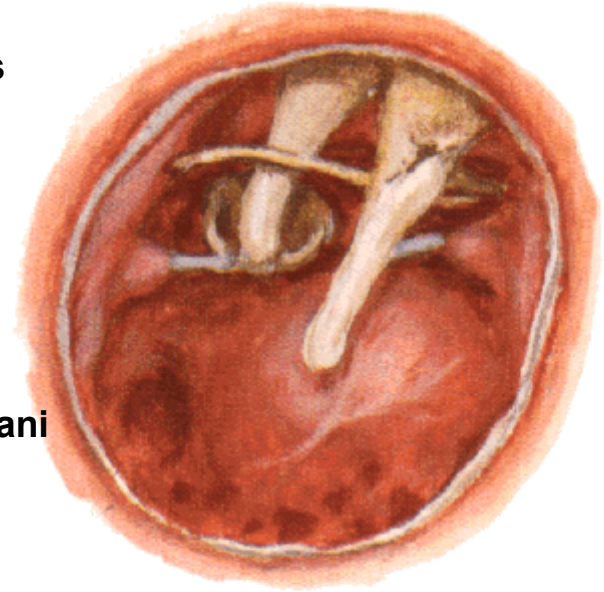
light reflex (trigonum Woodi)

Viewed through speculum

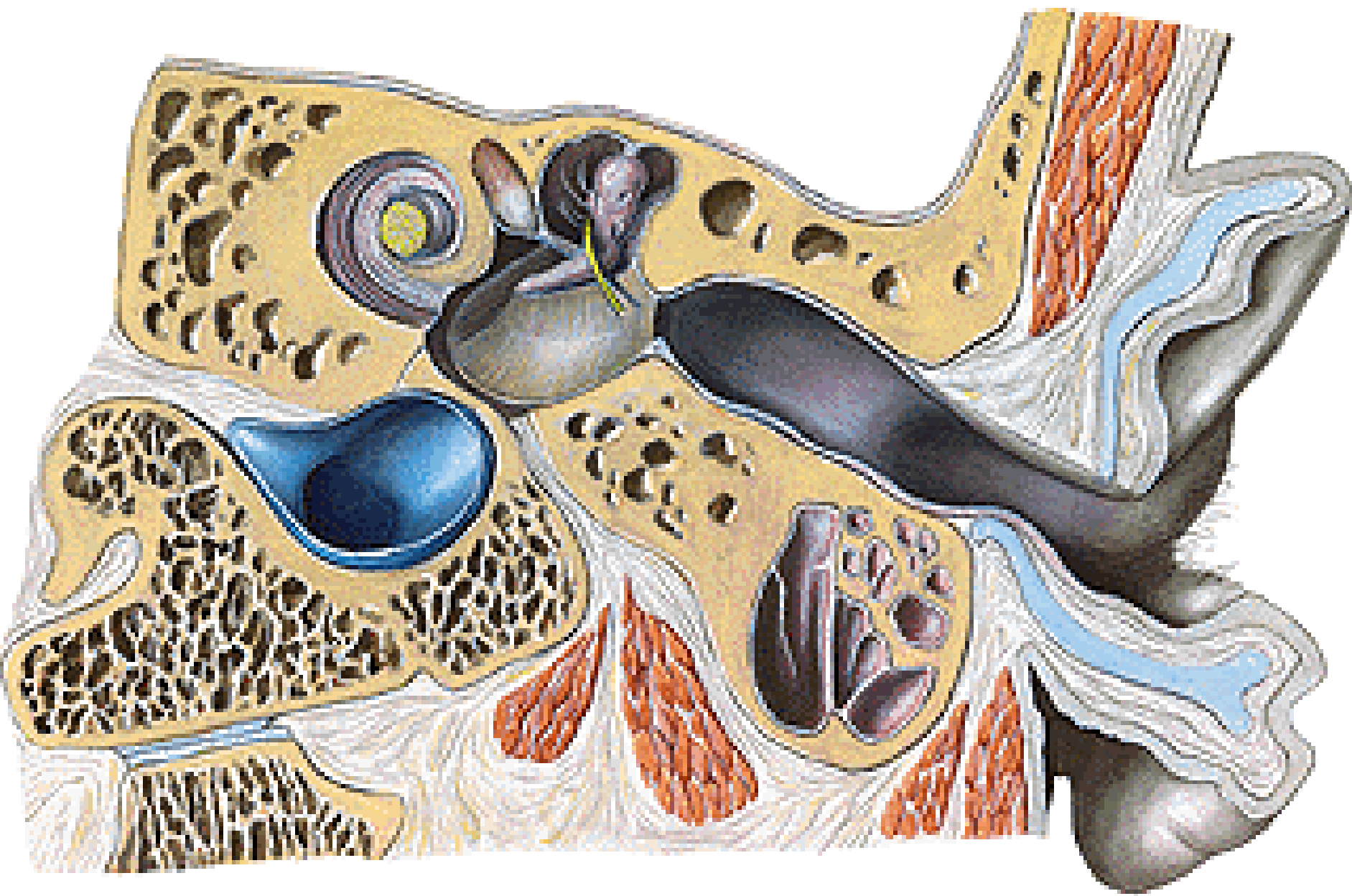


Tympanic Cavity

Viewed from External Acoustic Meatus



Tympanic Membrane Removed



MEMBRANA TYMPANI:

A. MAXILLARIS

A. OCCIPITALIS

A. AURICULARIS POST.

V. JUGULARIS EXT.

SINUS DURAE MATRIS

PLEXUS TUBAE AUDITIVAE

N. AURICULOTEMPORALIS

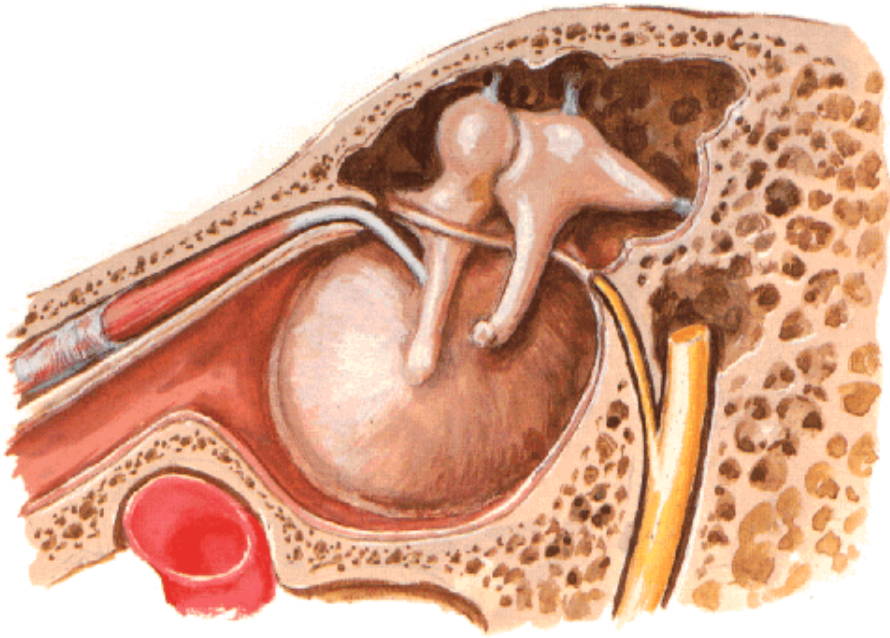
R. AURICULARIS N. VAGI

N. TYMPANICUS N. GLOSSOPHARYNGEI

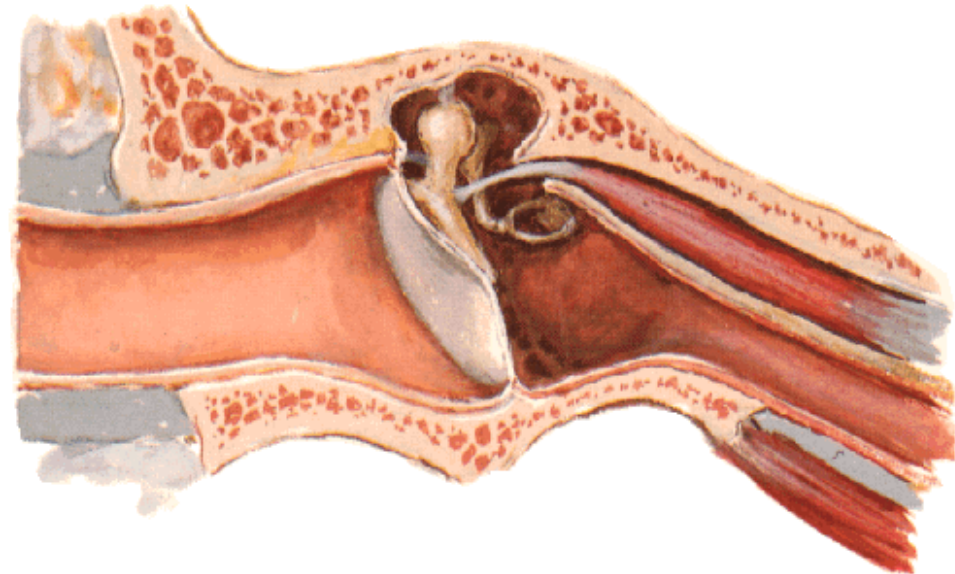
N. FACIALIS

CAVUM TYMPANI

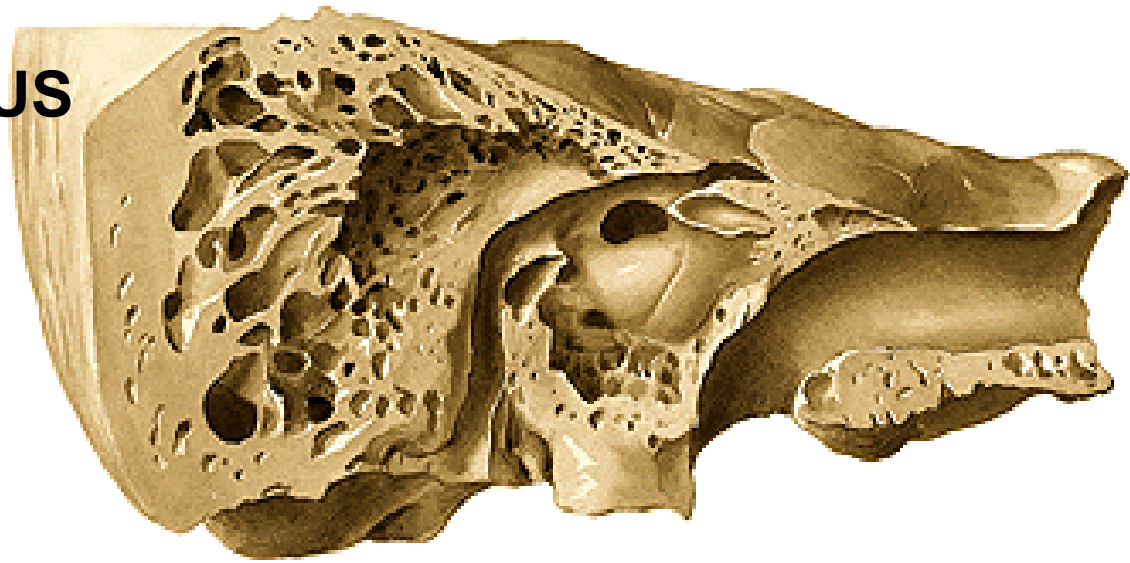
Tympanic Cavity - Lateral Wall
Medial View



External Ear and Tympanic Cavity
Coronal Oblique Section



PARIES LABYRINTHICUS



PROMONTORY

FENESTRA VESTIBULI

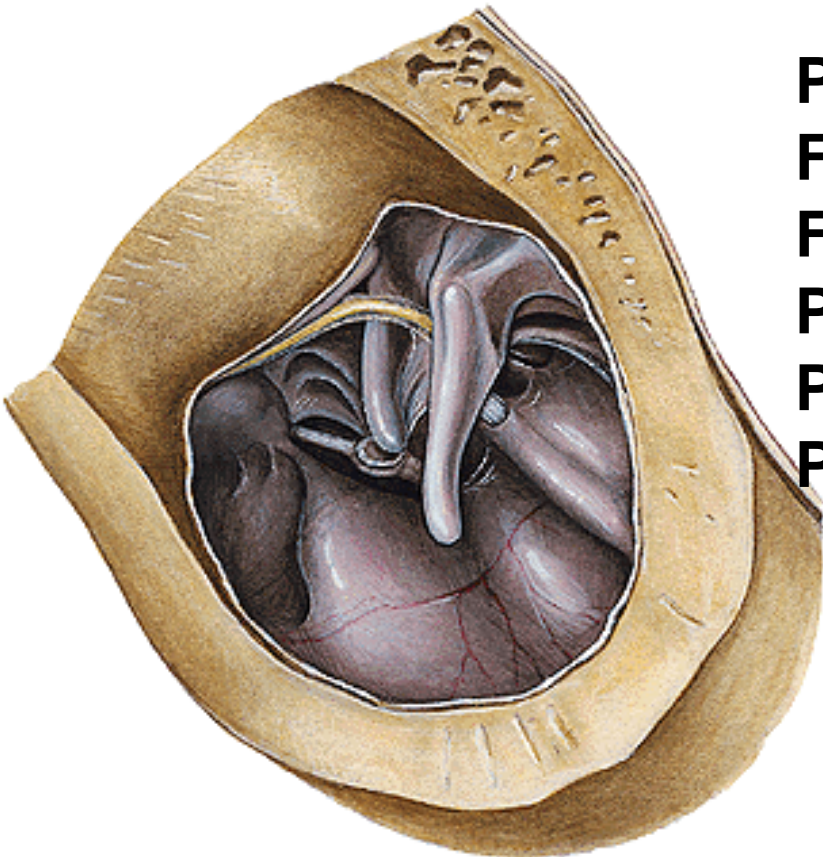
FENESTRA COCHLEAE

PROCESSUS COCHLEARIFORMIS

PROMINENTIA CANALIS FACIALIS

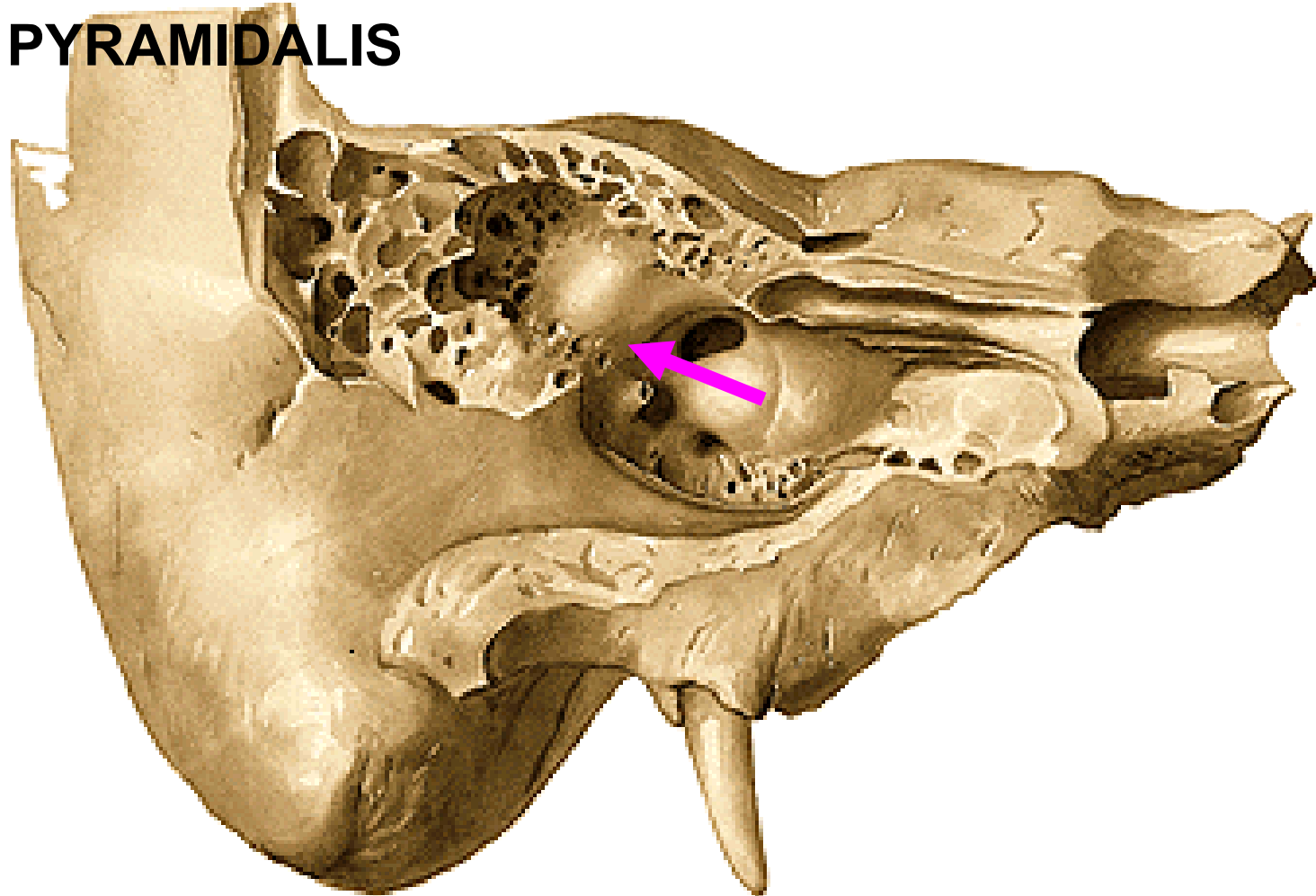
PROMINENTIA CANALIS

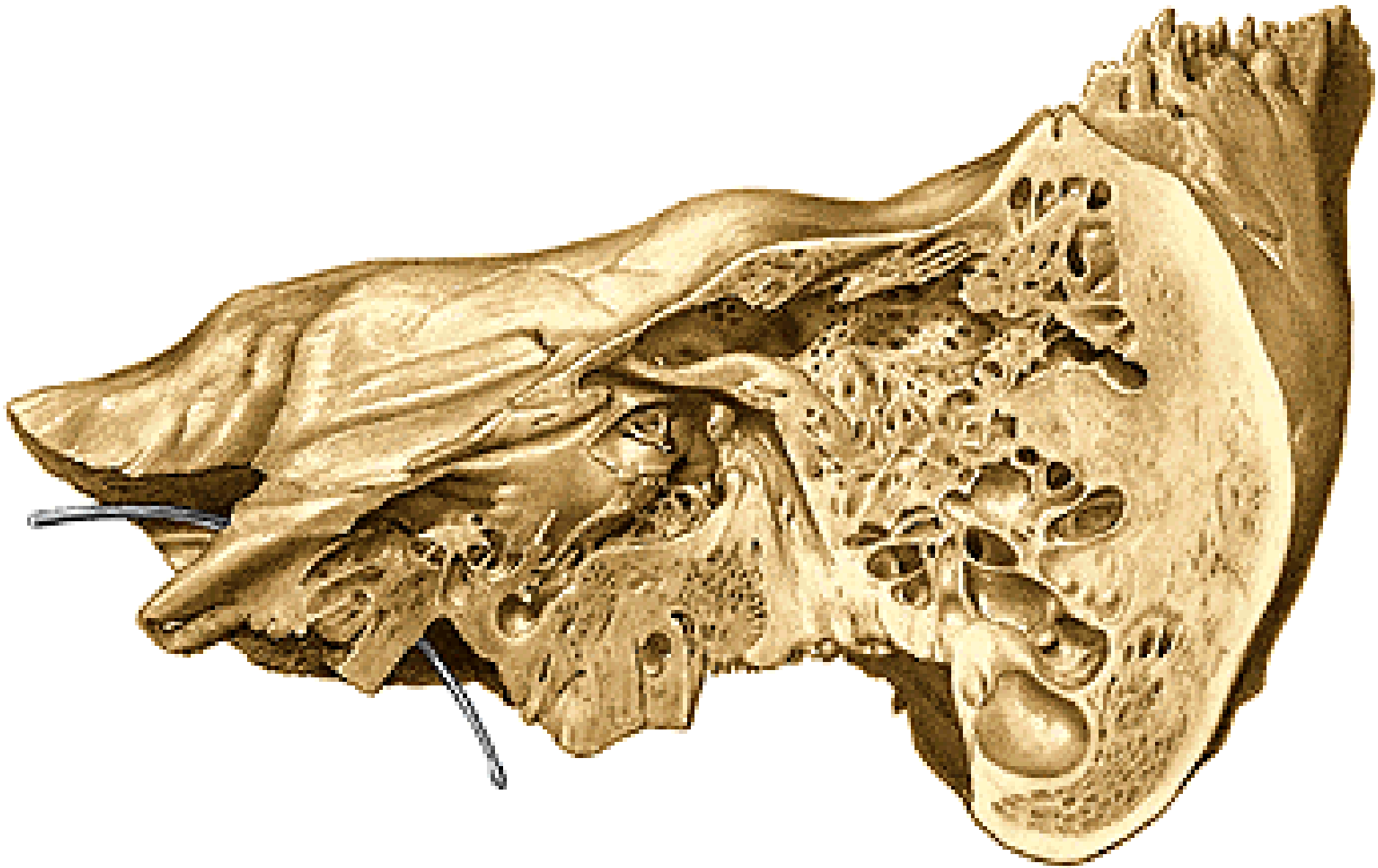
SEMICIRCULARS LATERALIS

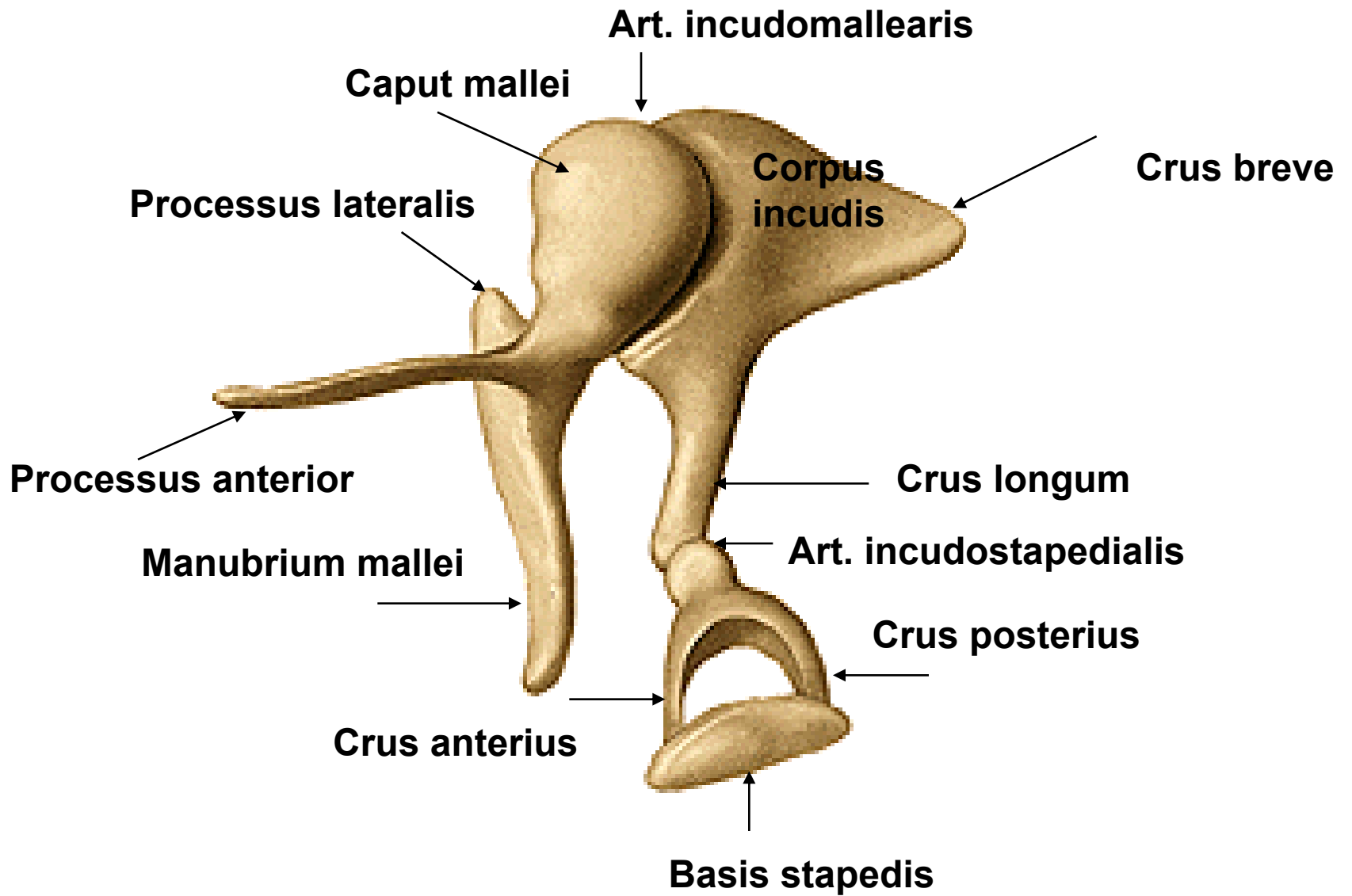


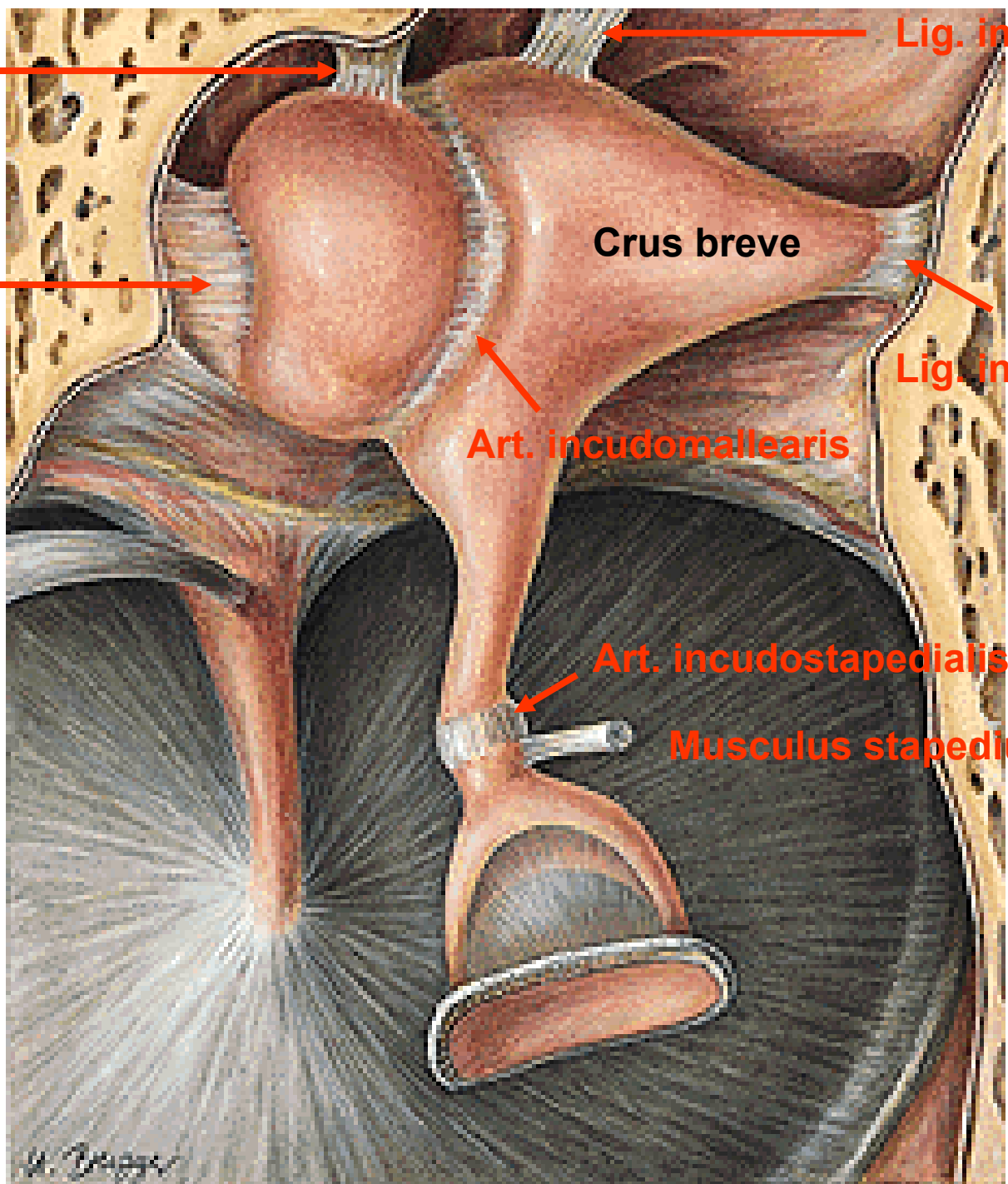
PARIES MASTOIDEUS

ADITUS AD ANTRUM MASTOIDEUM
PROMINENTIA CANALIS N. FACIALIS
FORAMEN CHORDAE TYMPANI
EMINENTIA PYRAMIDALIS









Lig. incudis sup.

Lig. mallei sup.

Lig. mallei lat.

Crus breve

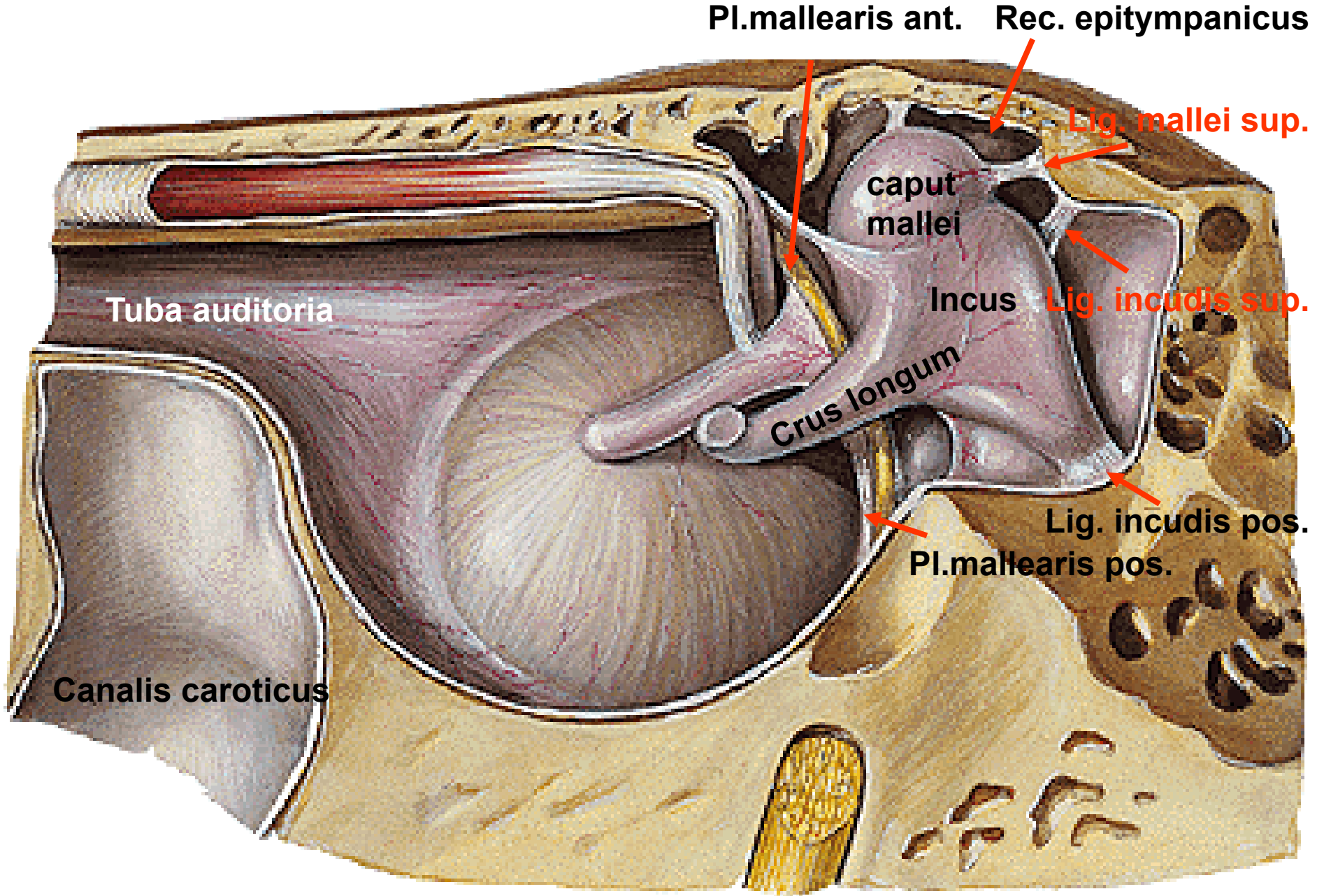
Lig. incudis post.

Art. incudomallearis

Art. incudostapedialis

Musculus stapedius, Tendo

W. Dreyer



Pl.mallearis ant. Rec. epitympanicus

Lig. mallei sup.

caput mallei

Incus

Lig. incudis sup.

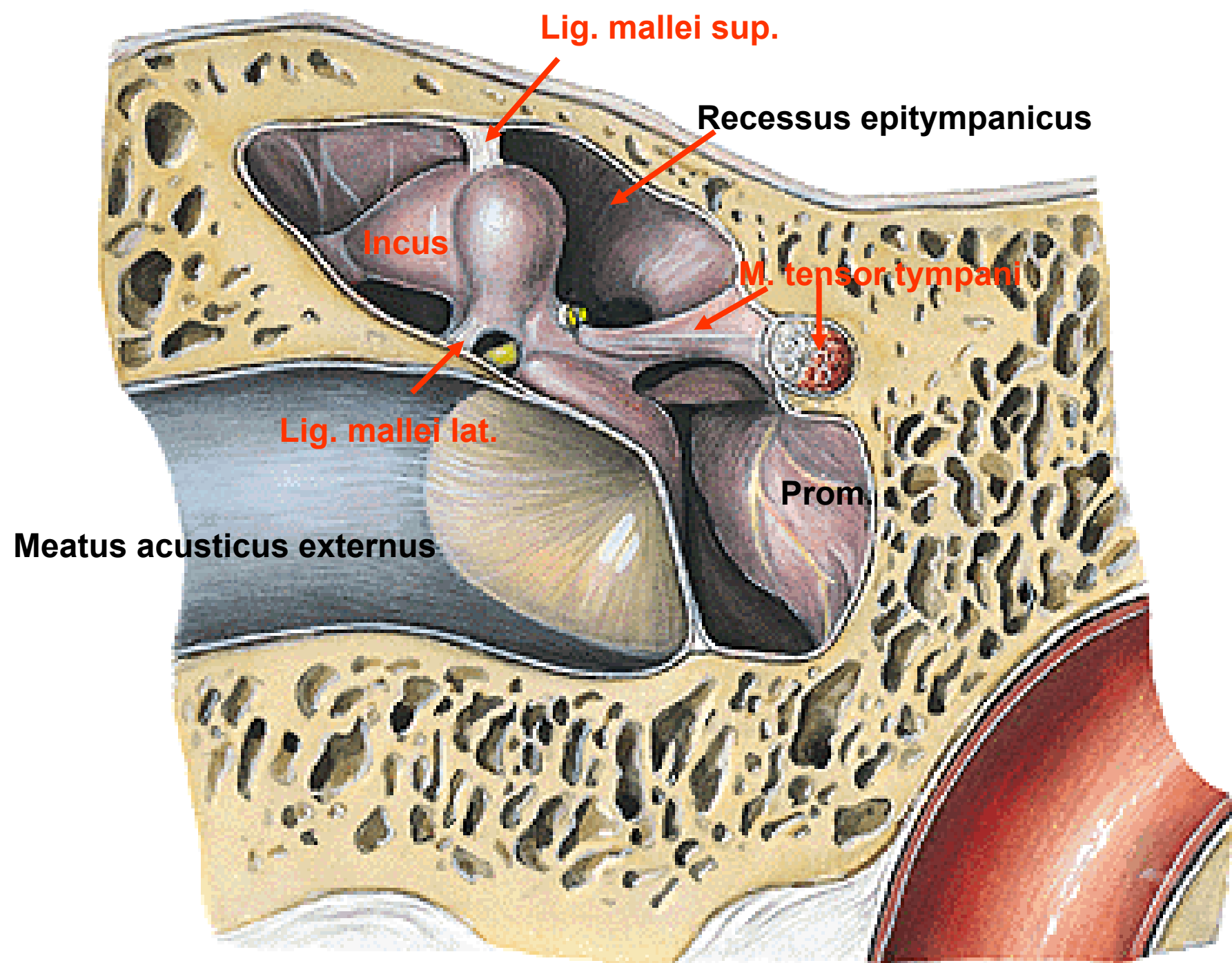
Crus longum

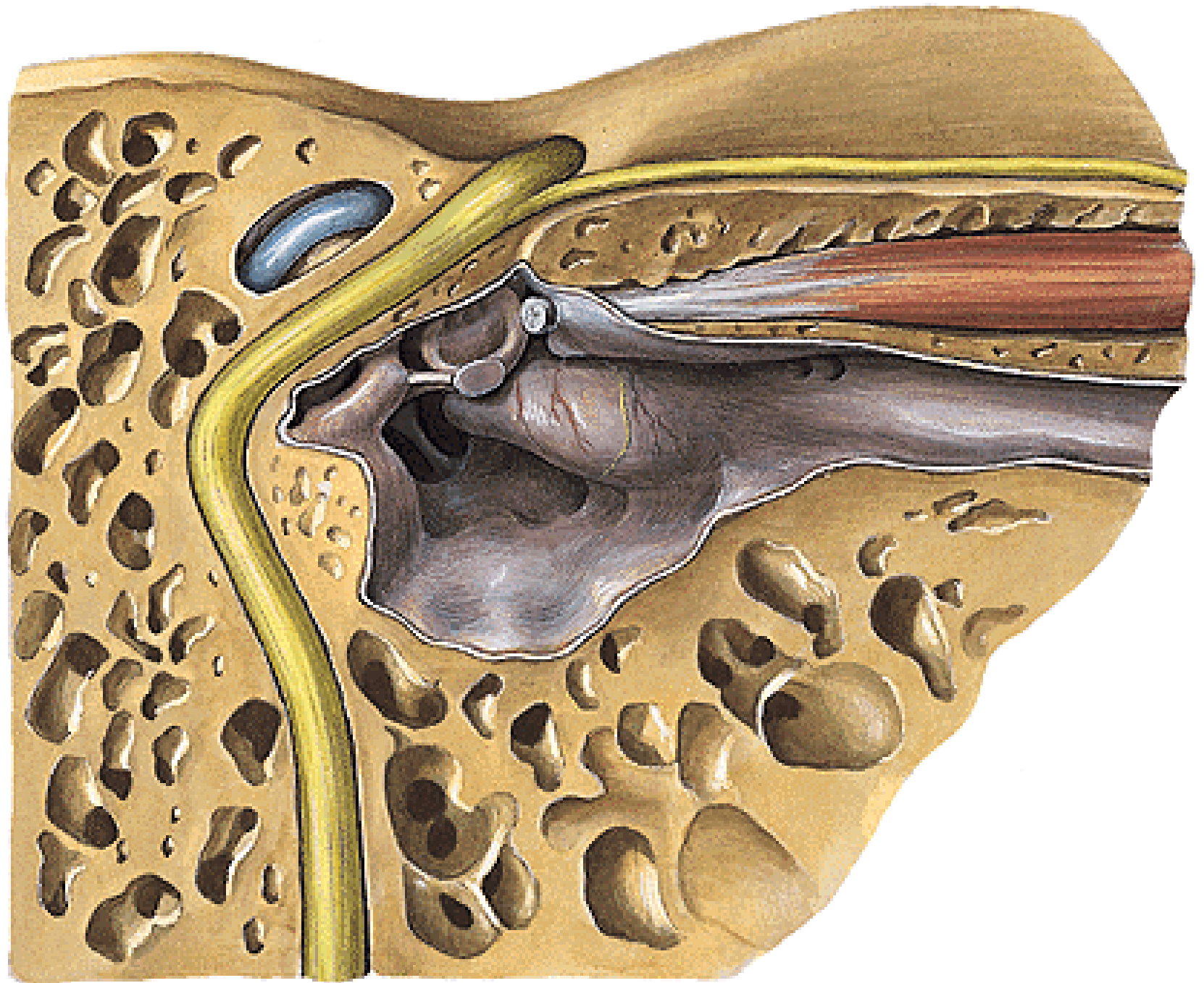
Lig. incudis pos.

Pl.mallearis pos.

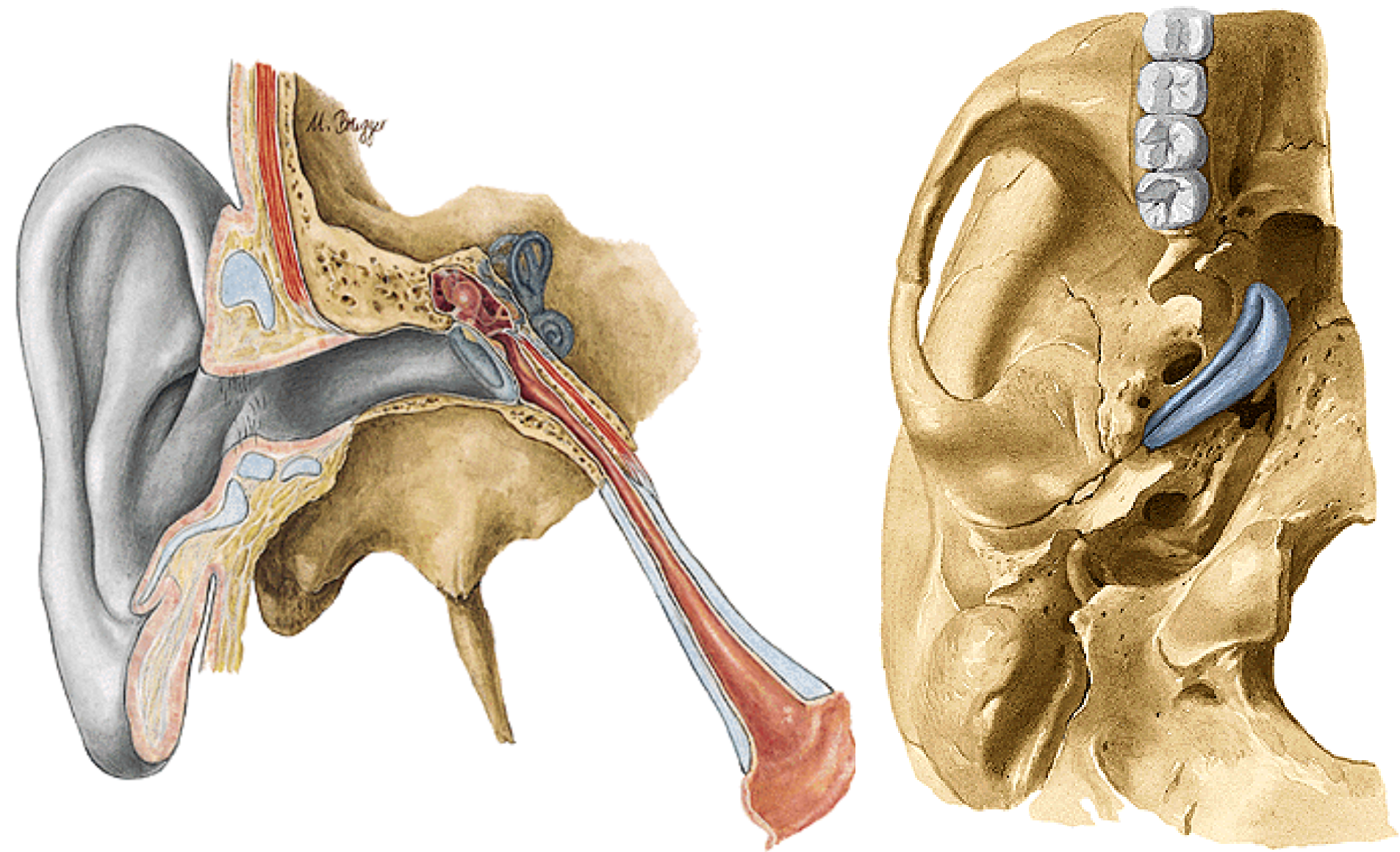
Tuba auditoria

Canalis caroticus





TUBA AUDITIVA (PHARYNGOTYMPANICA)



CAVUM TYMPANI:

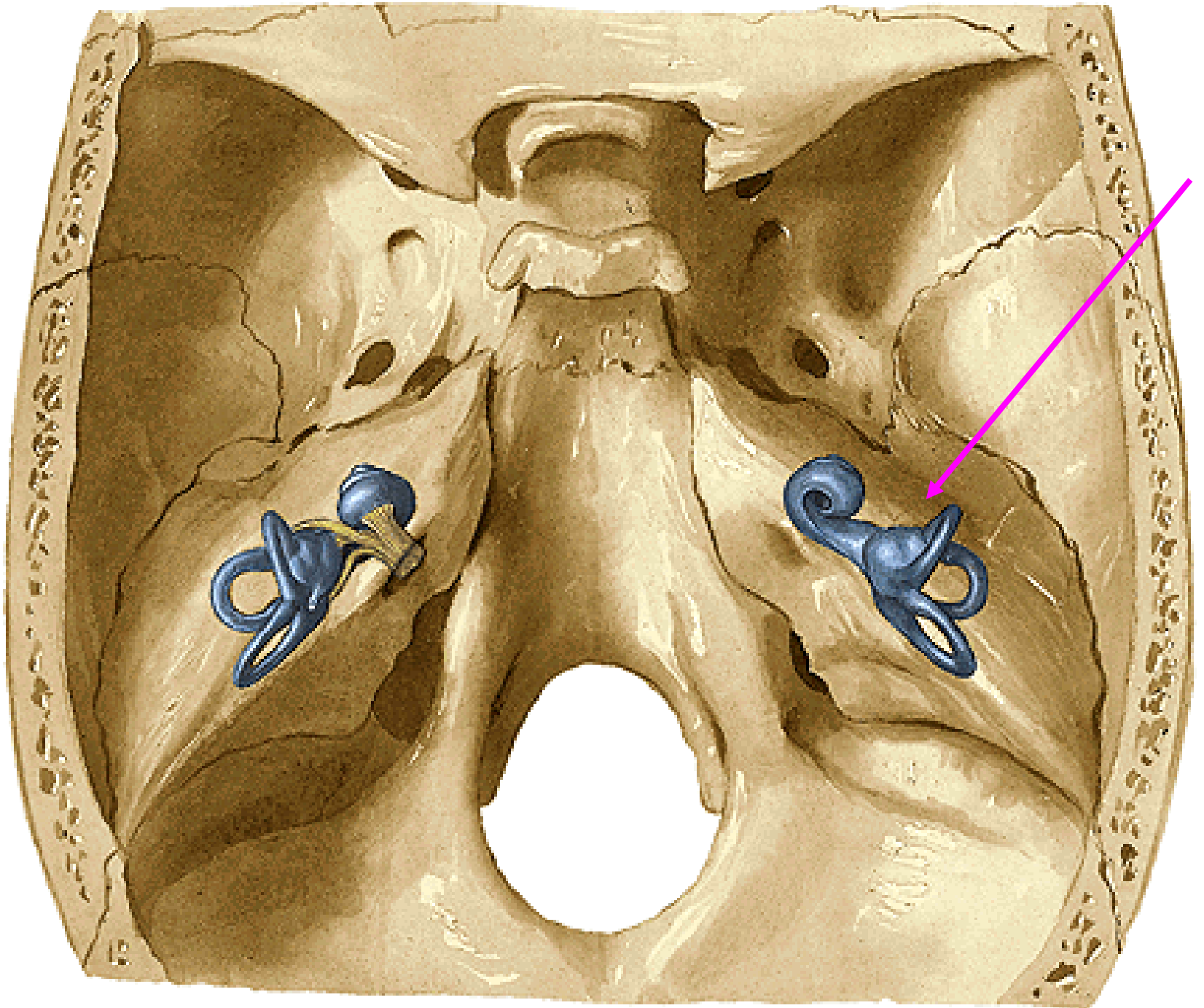
A. TYMPANICA ANT.

A. STYLOMASTOIDEA

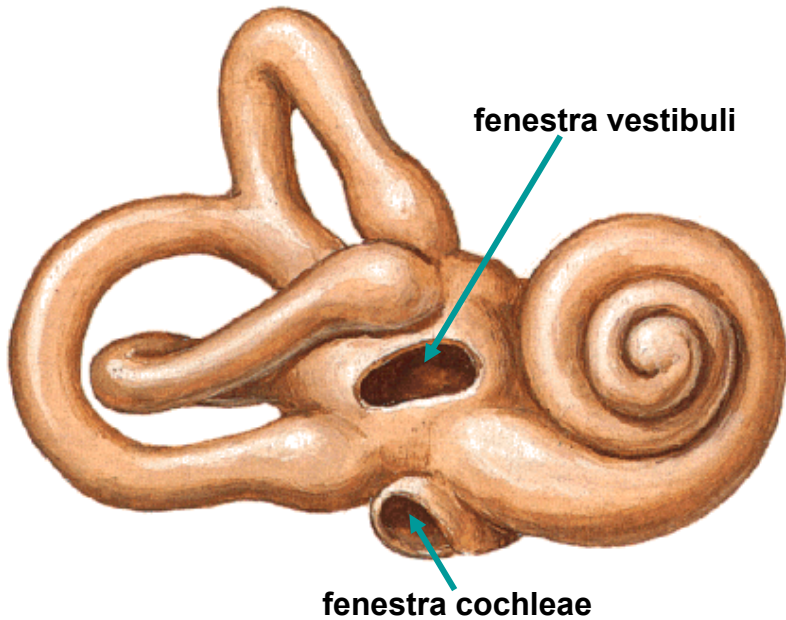
A. AURICULARIS POST.

PLEXUS PTERYGOIDEUS

**PLEXUS TYMPANICUS (CN VII,IX and cervical sympathetic
CHORDA TYMPANI**



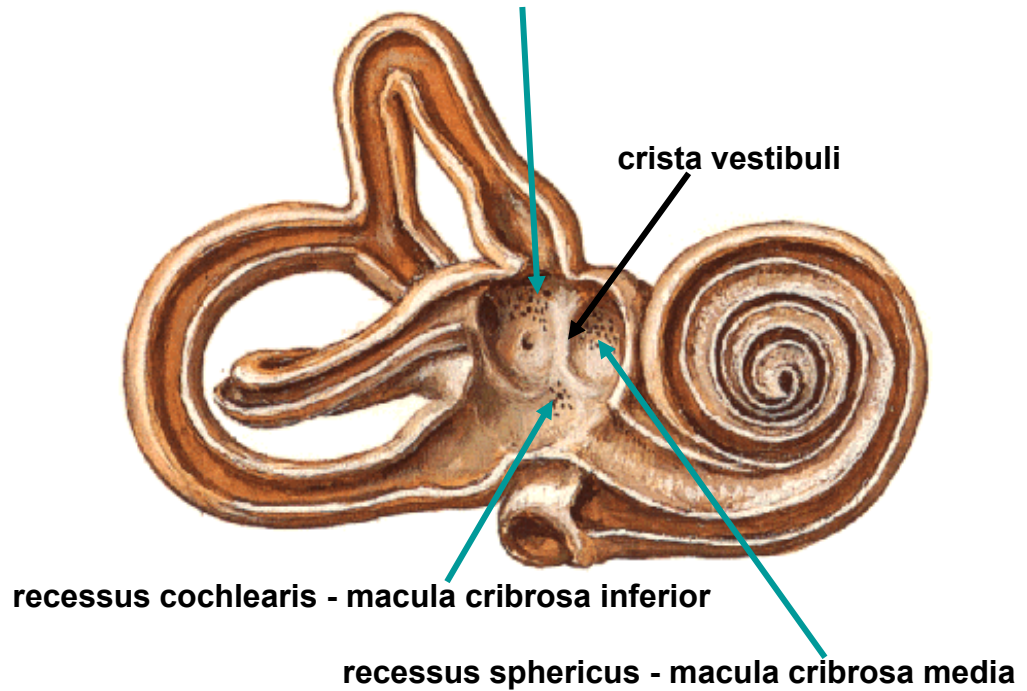
Right Osseous Labyrinth
Anterolateral View



cochlea, vestibulum et canales semicirculares ossei

Right Osseous Labyrinth - Dissected
Membranous Labyrinth Removed

recessus ellipticus - macula cribrosa superior



recessus sphericus - macula cribrosa media

COCHLEA

Modiolus

Canalis spiralis cochleae

Cupula

Lamina spiralis ossea

Scala vestibuli

Scala tympani

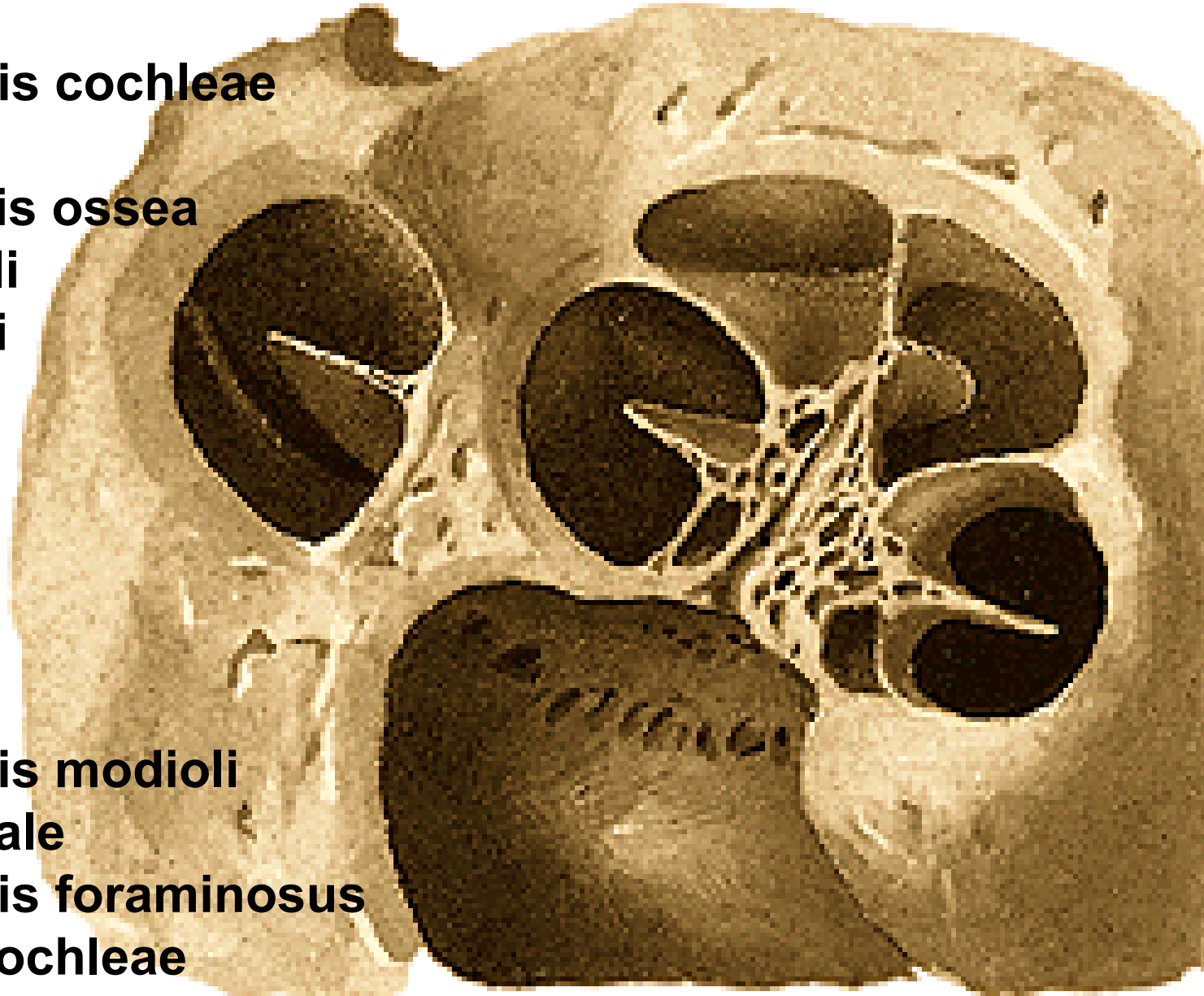
Helicotrema

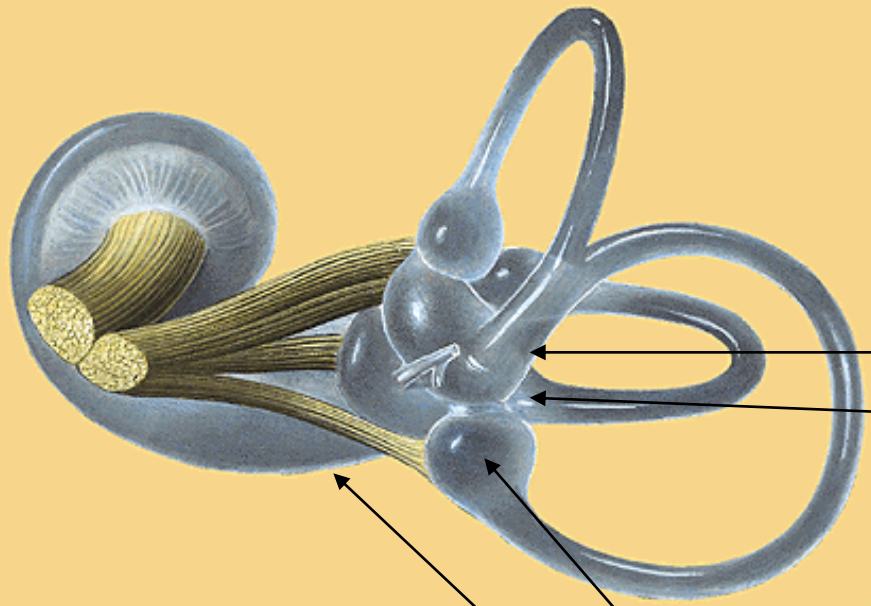
Canalis spiralis modioli

Ganglion spirale

Tractus spiralis foraminosus

Canaliculus cochleae





Crista ampullaris ant.
Crista ampullaris lat.
Crista ampullaris post.

Crus membranaceum commune
 Crus simplex d.s.lat.

Saccus endolymphaticus

Macula utriculi
Macula sacculi

Crus ampullare d.s.post.

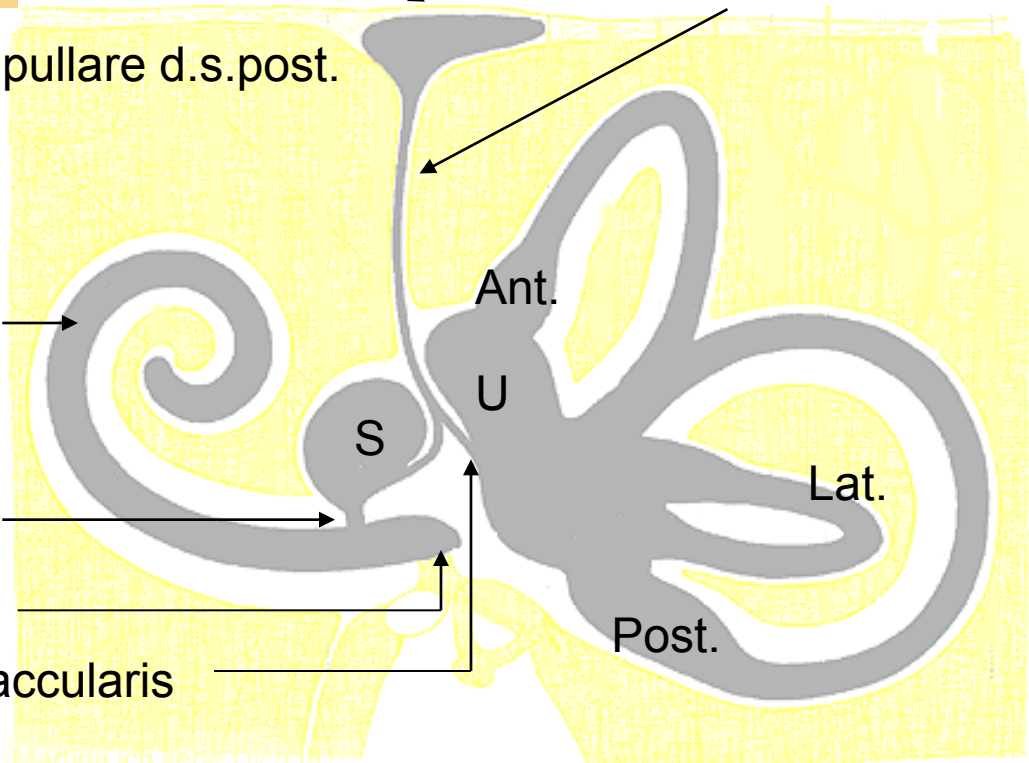
Ductus endolymphaticus

Ductus cochlearis

Ductus reuniens

Caecum vestibulare

Ductus utriculosaccularis



Caecum cupulare
Caecum vestibulare

Scala vestibuli
(perilymph)

Ductus
cochlearis
(endolymph)

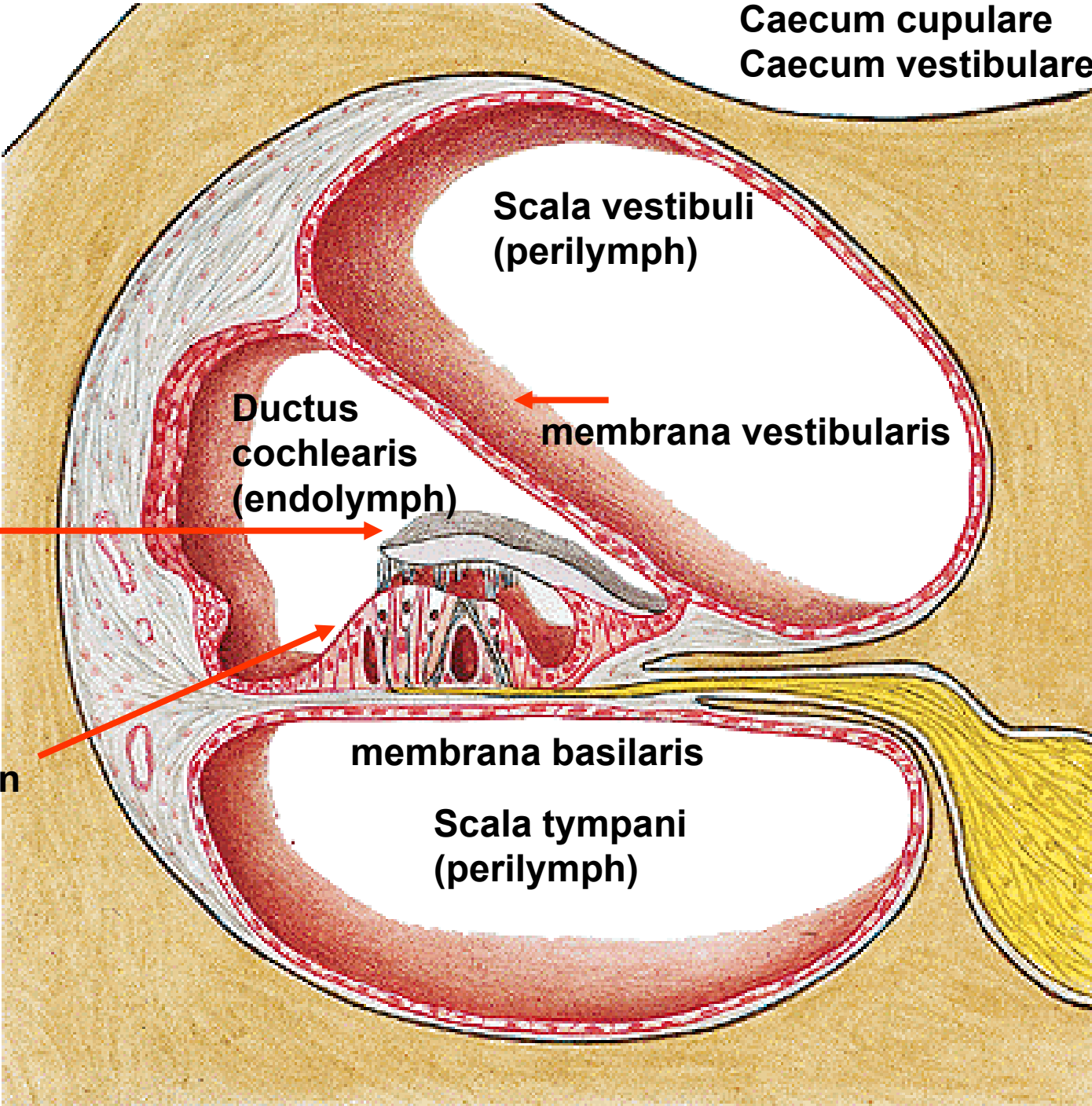
membrana vestibularis

Membrana
tectoria

Spiral organ
of Corti

membrana basilaris

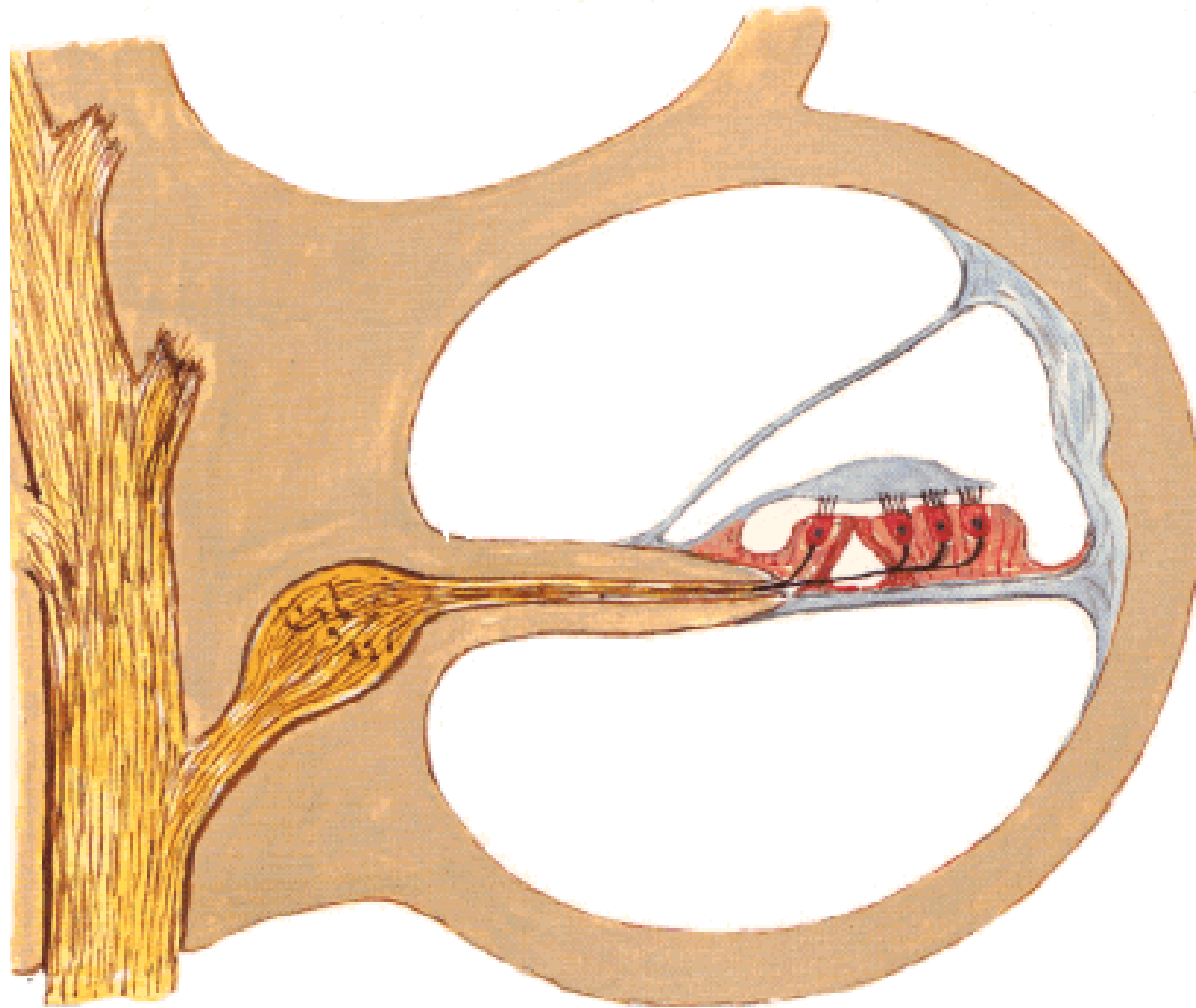
Scala tympani
(perilymph)



Osseous and Membranous Labyrinths

Section Through Turn of Cochlea

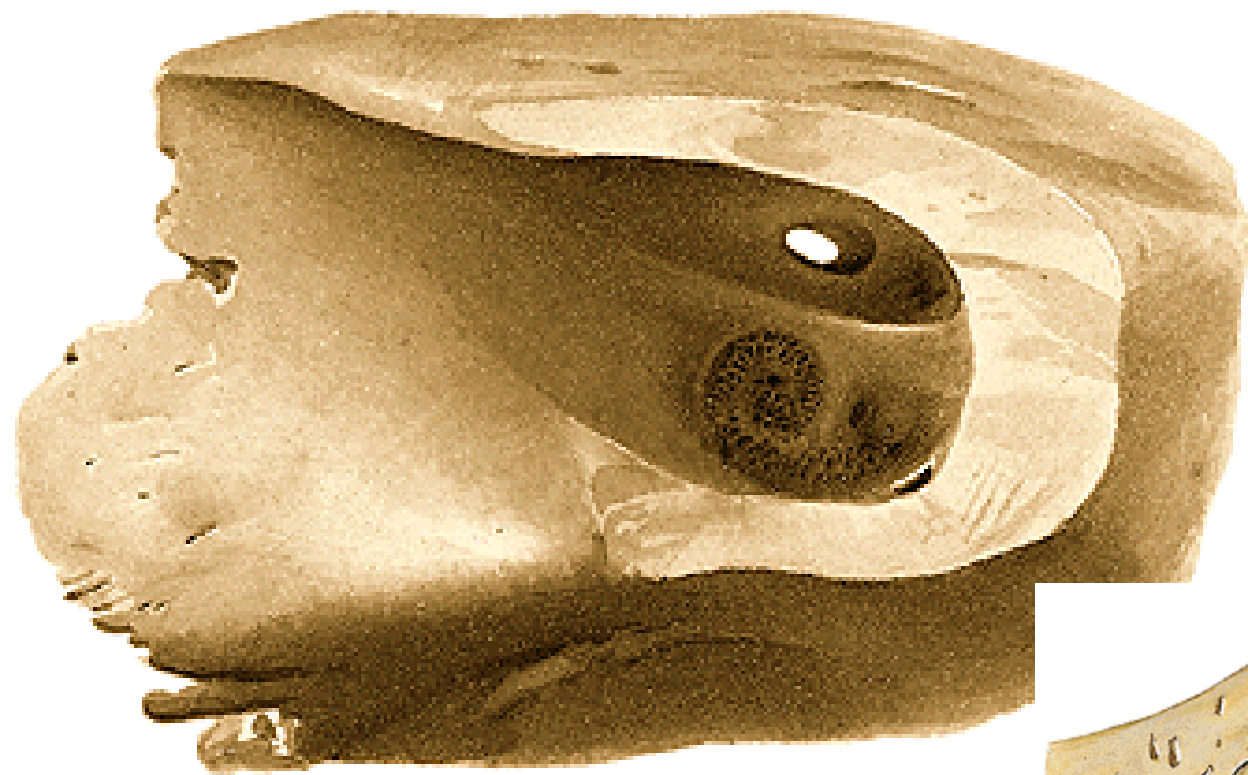
20-20000Hz



N. VESTIBULOCOCHLEARIS

- **PARS COCHLEARIS**
- **PARS VESTIBULARIS**
 - **N. utriculoampullaris**
 - **n. utricularis**
 - **n. ampullaris ant.**
 - **n. ampullaris lat.**
 - **N. saccularis**
 - **N. ampullaris post.**





FUNDUS MEATUS ACUSTICI INTERNI

Introitus can. n. VII

Area cochlea

Area vestibularis sup.

Area vestibularis inf.

Foramen singulare

