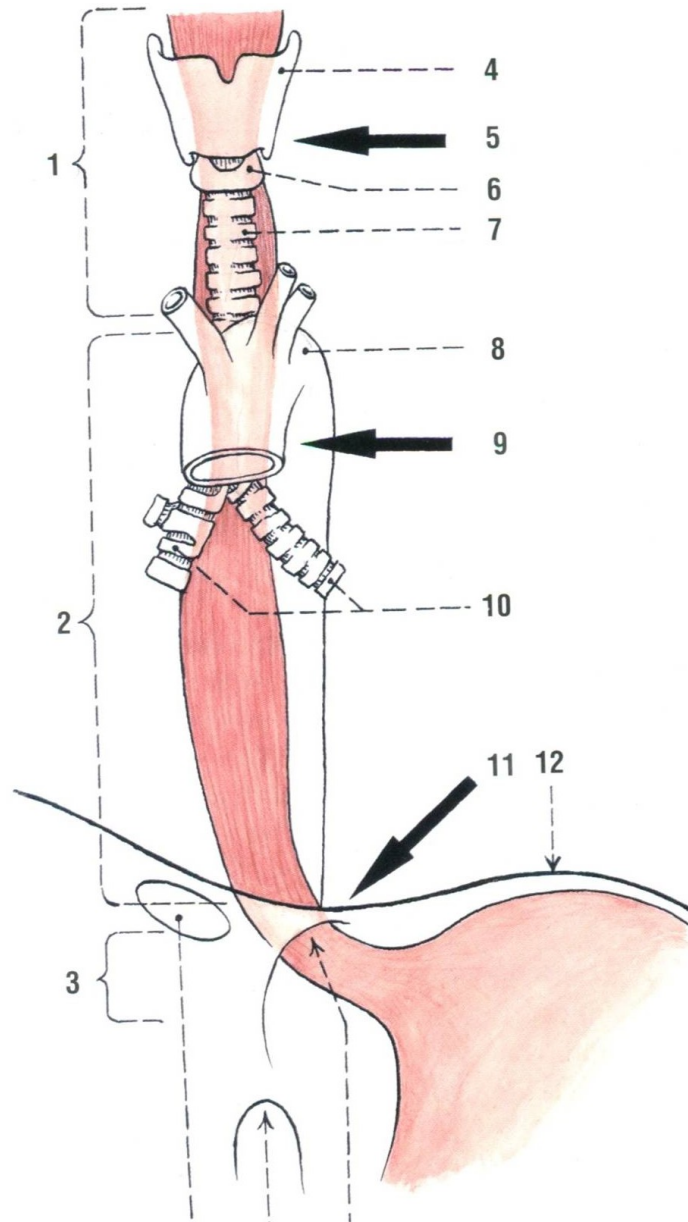
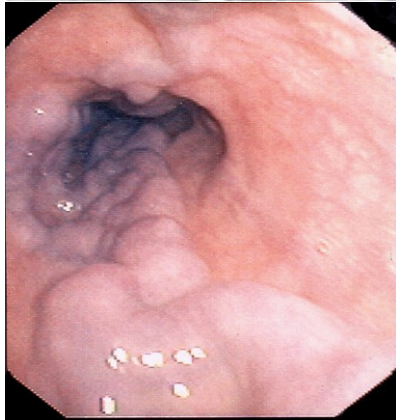


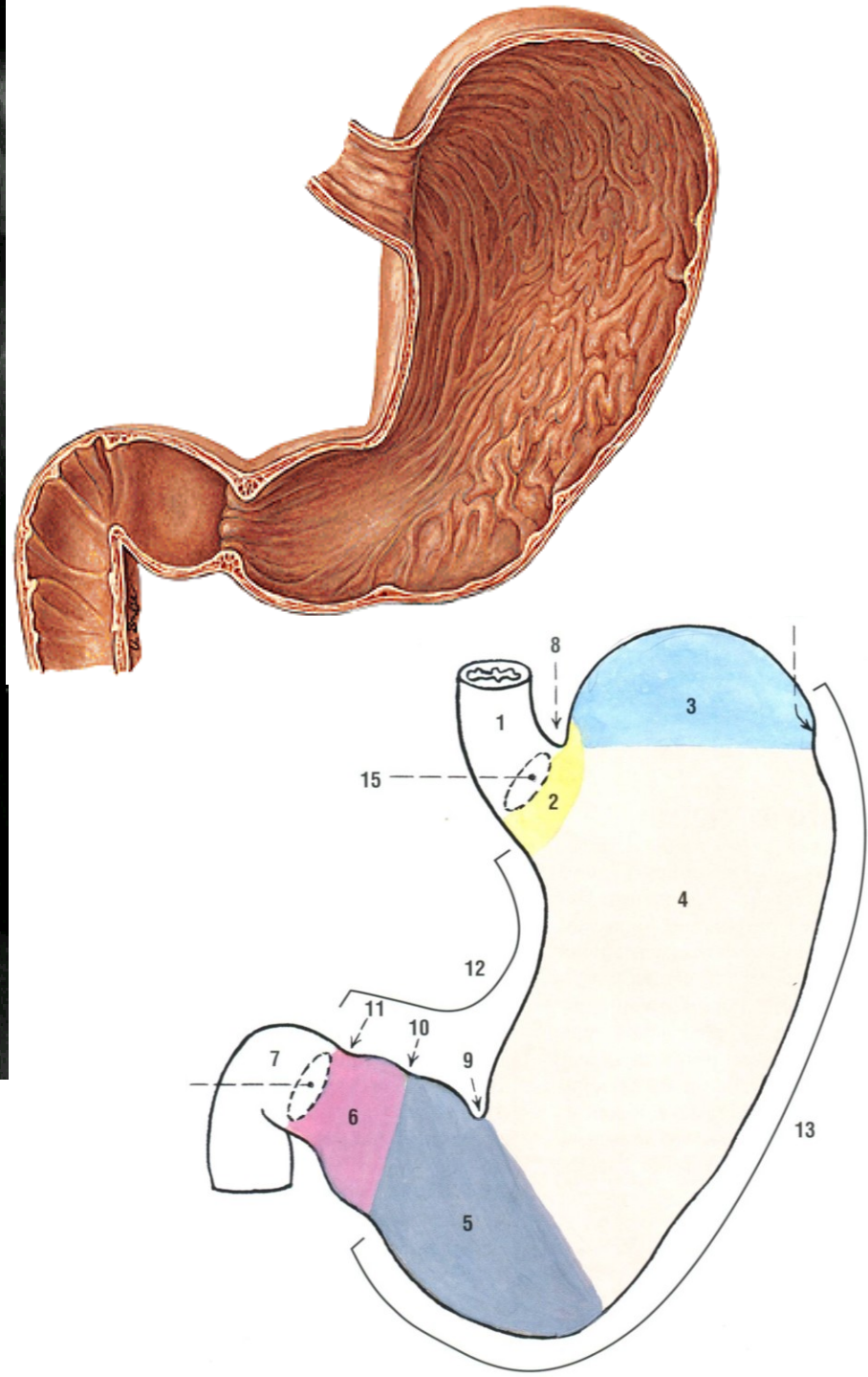
**RENTGENY**

# Esophagografie

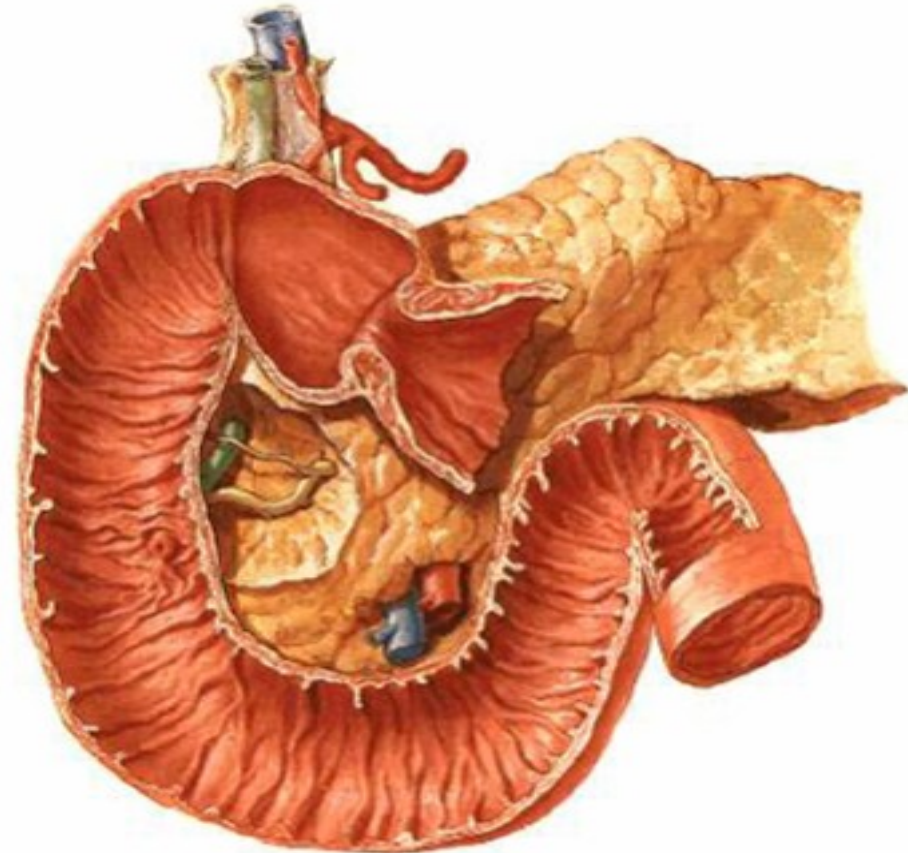
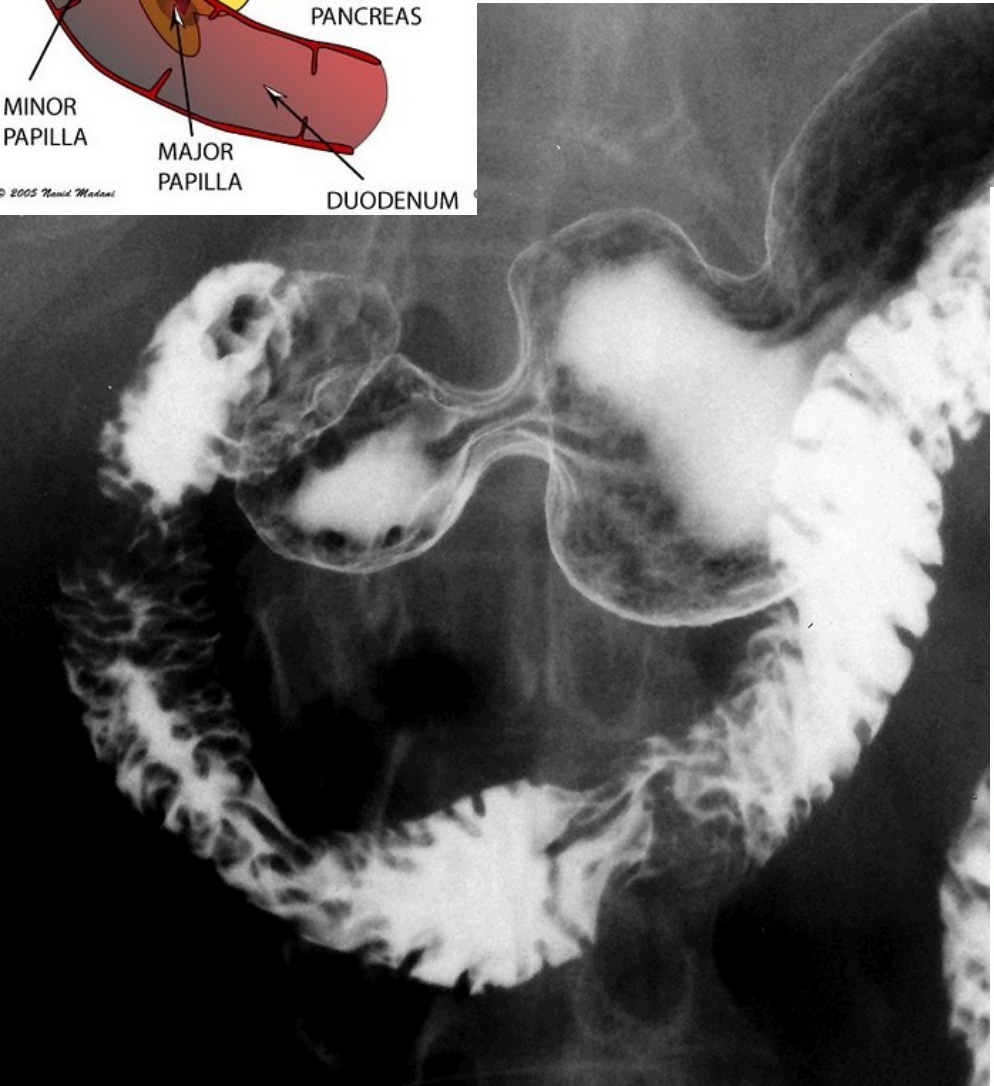
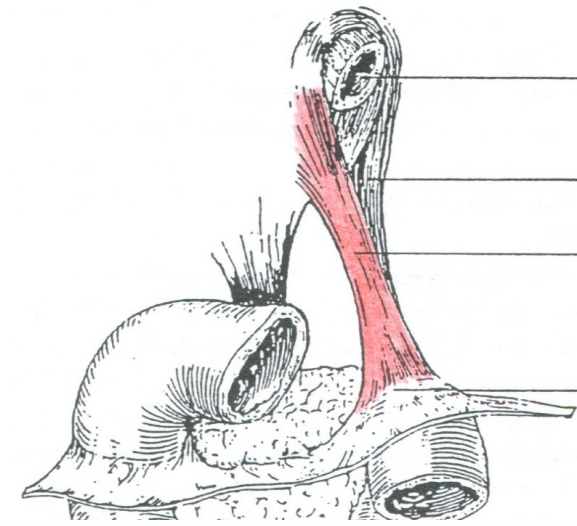
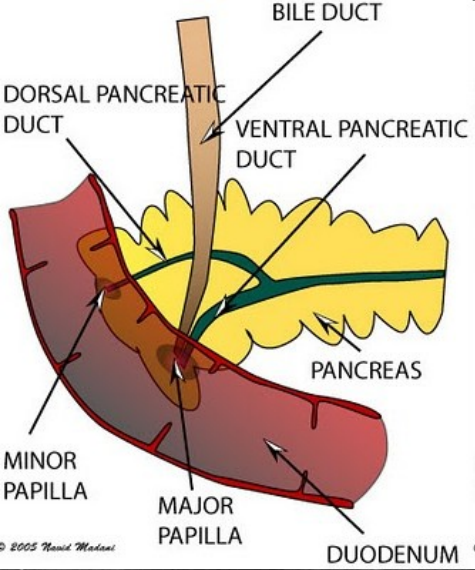


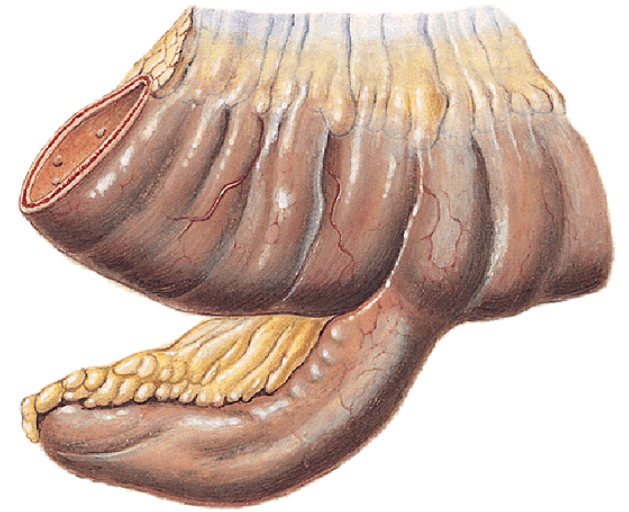
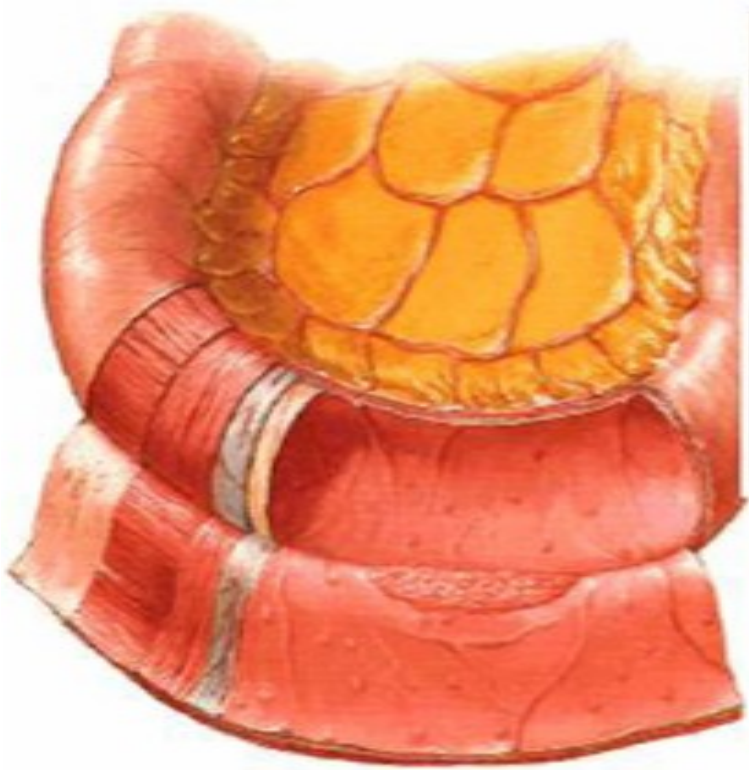


**Gastrografie**



# Duodenální okno



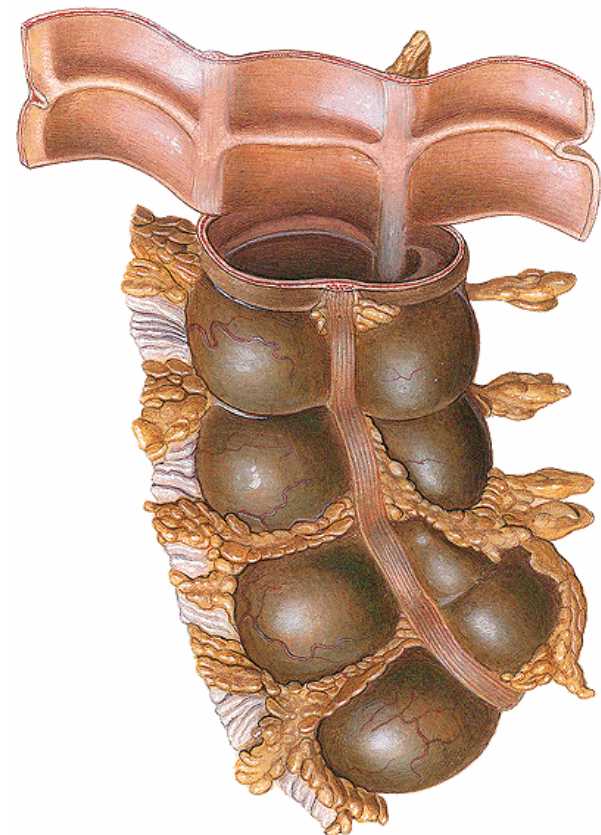


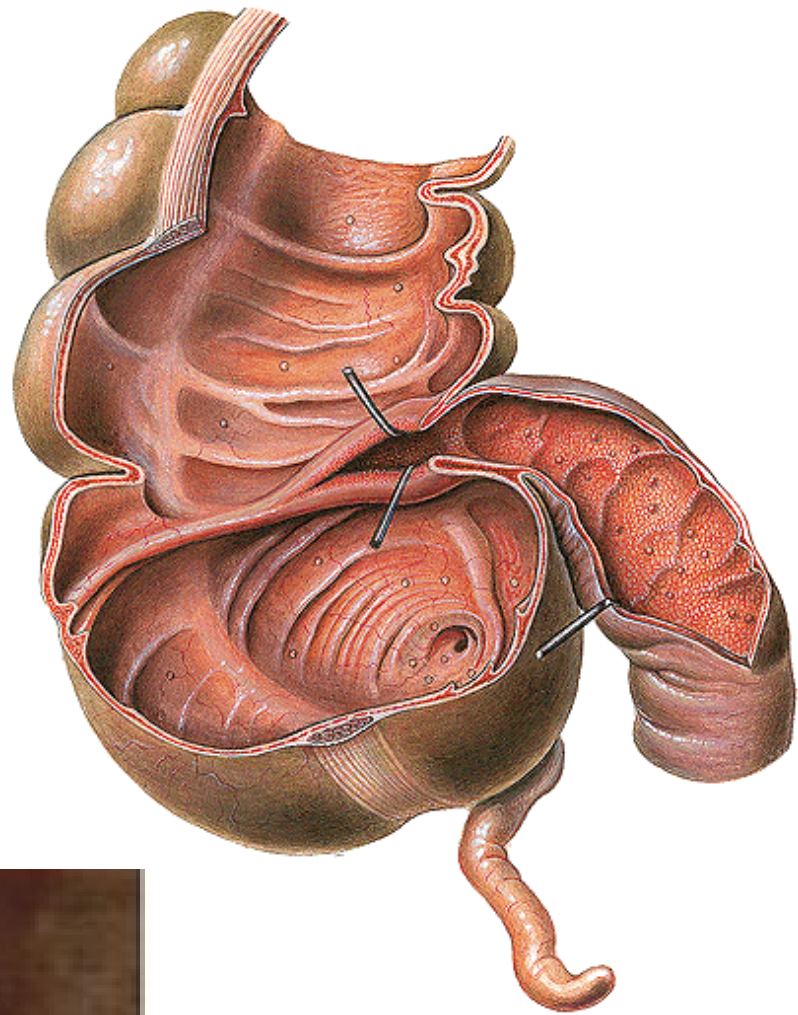
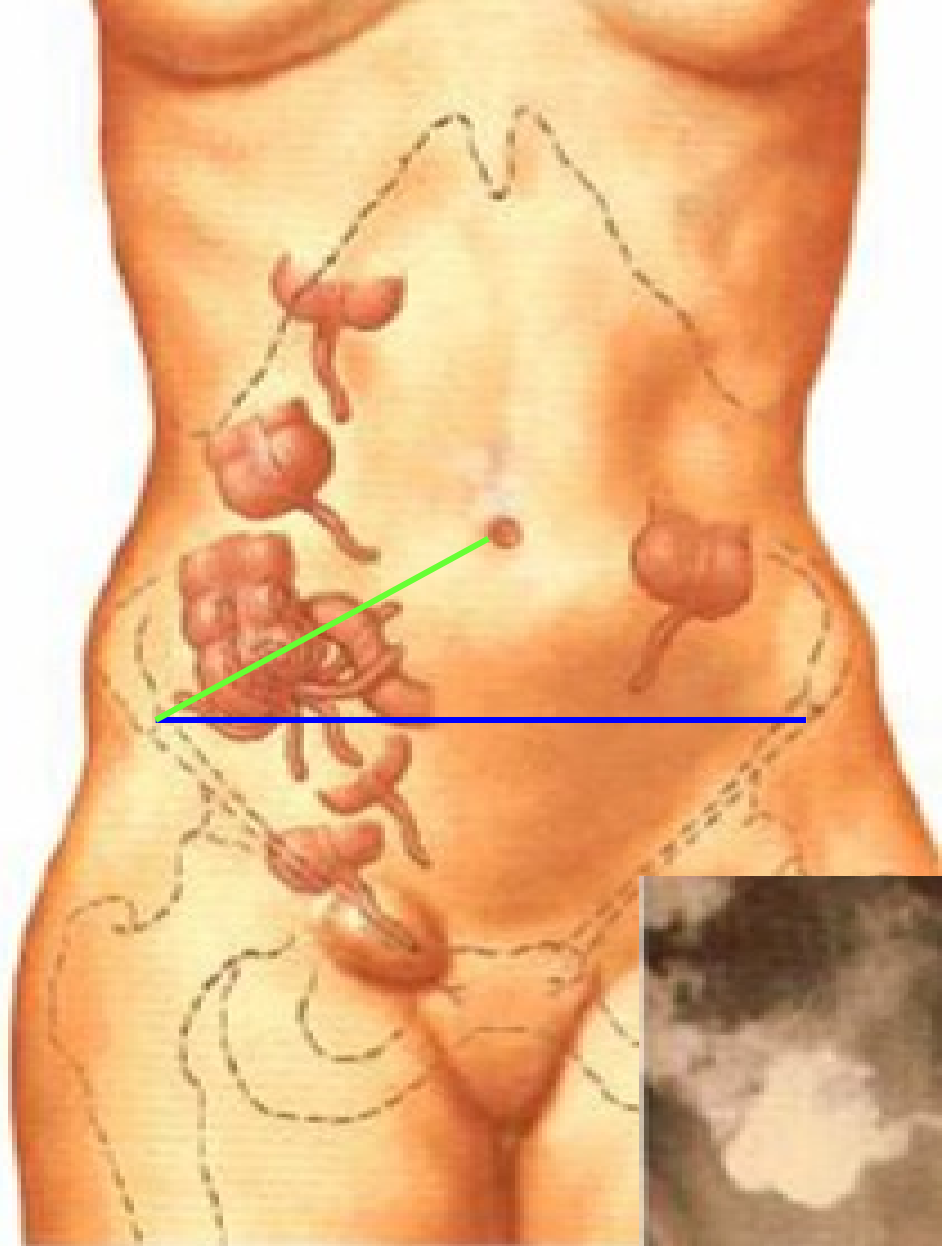
**RTG tenkého střeva**





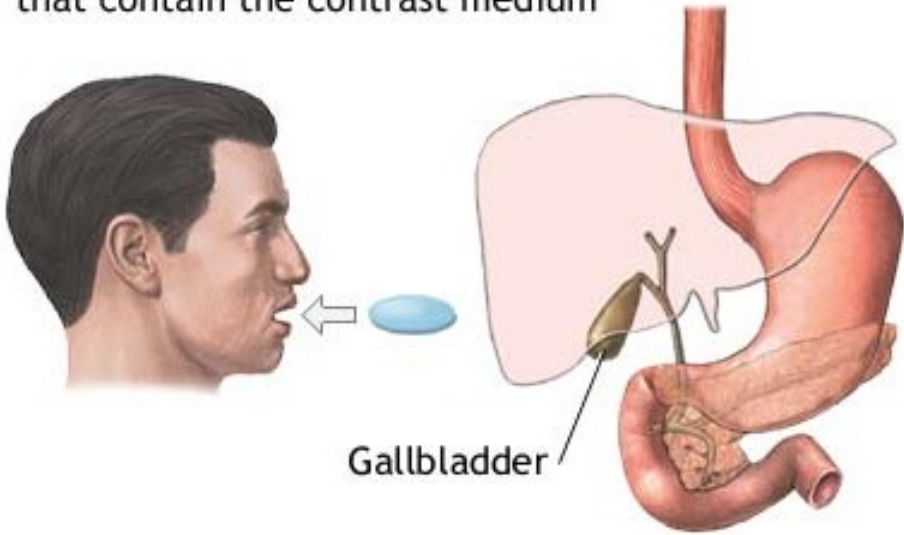
## Irigografie





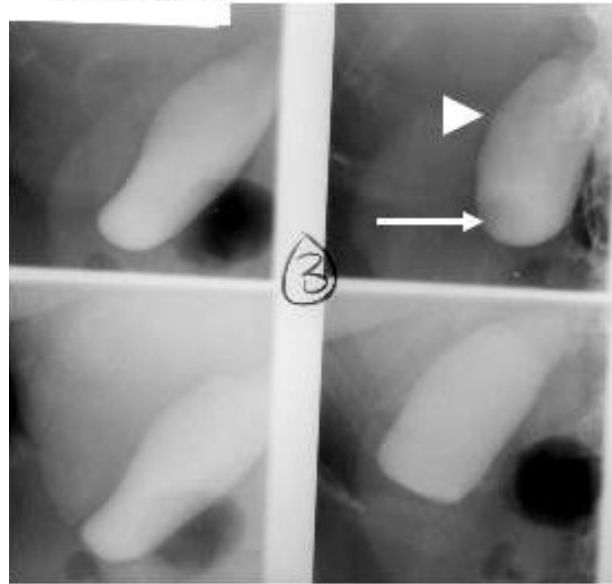
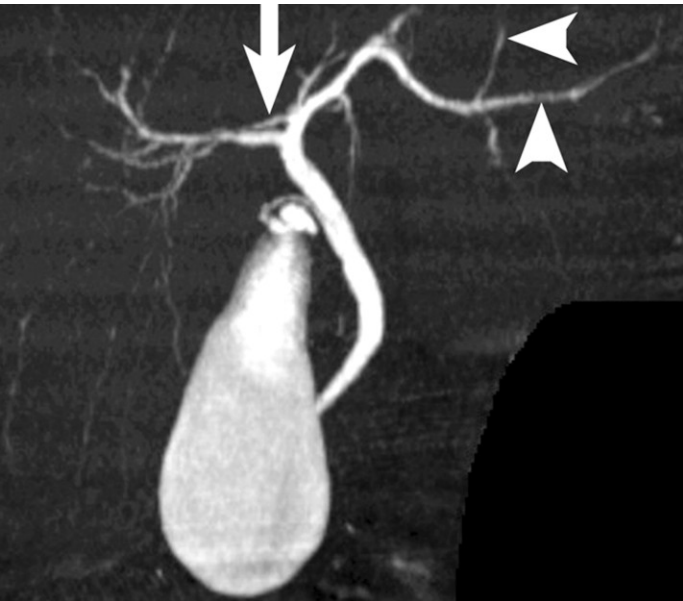
**RTG caeca**

6 tablets (1 at a time) are swallowed that contain the contrast medium



## cholecystografie

ADAM.

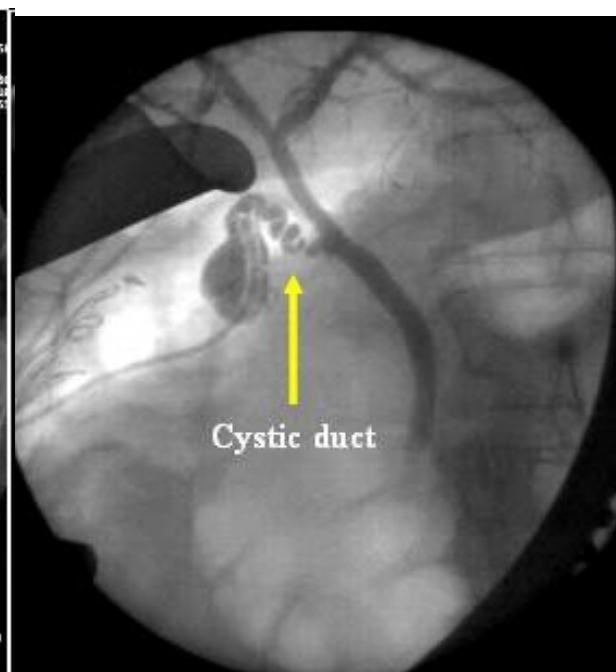
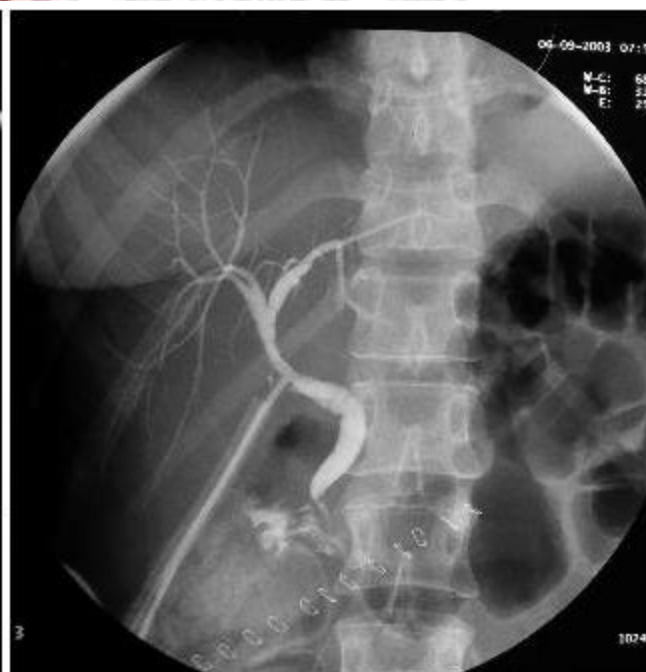


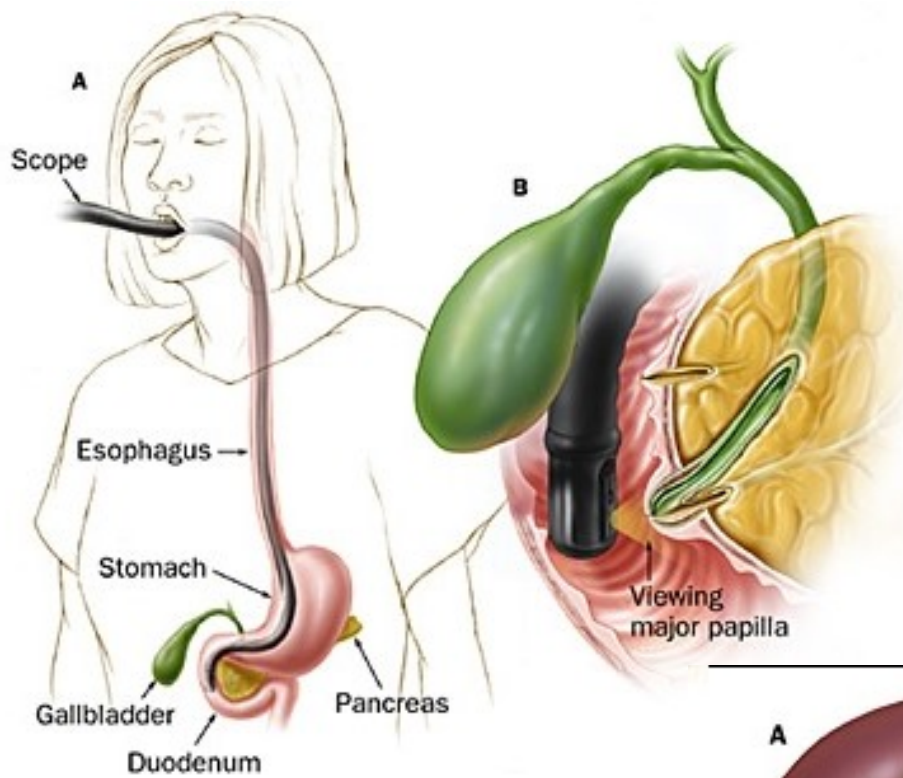




**cholangiografie**

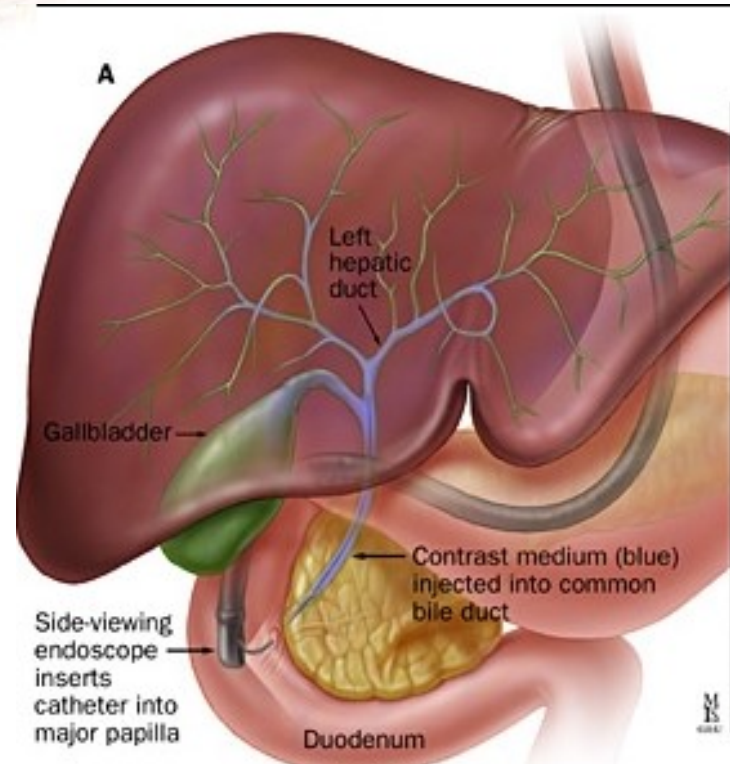
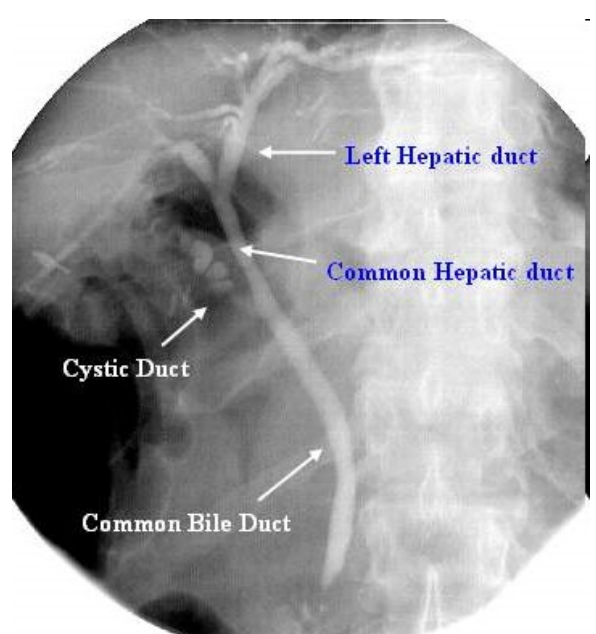
pooperační- s T-drenem





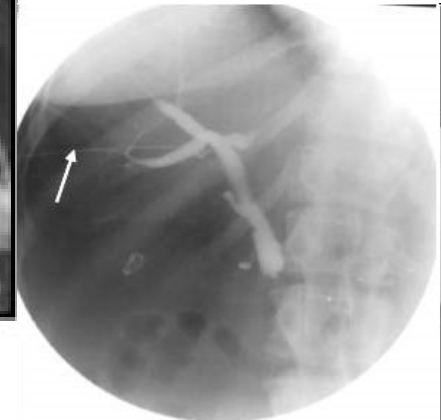
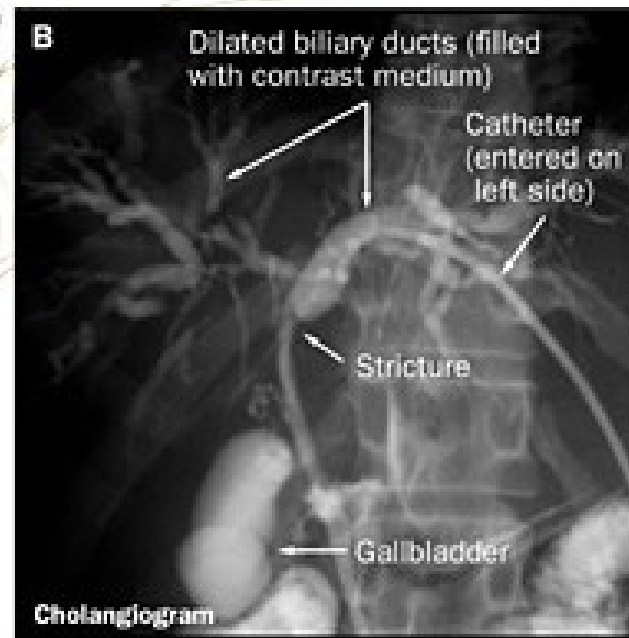
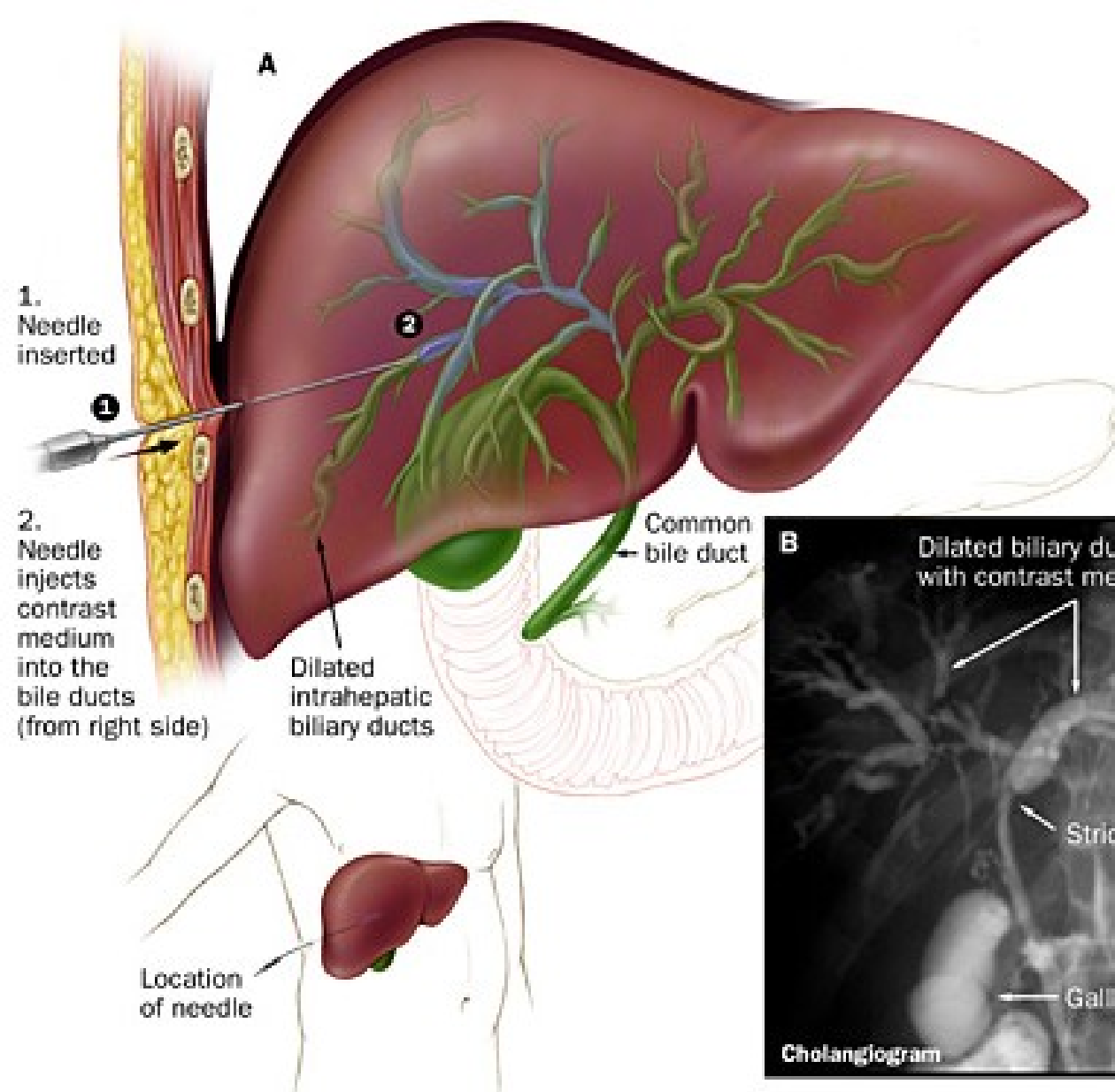
# ERCP

(endoskopická retrográdní cholangiopancreatikografie)



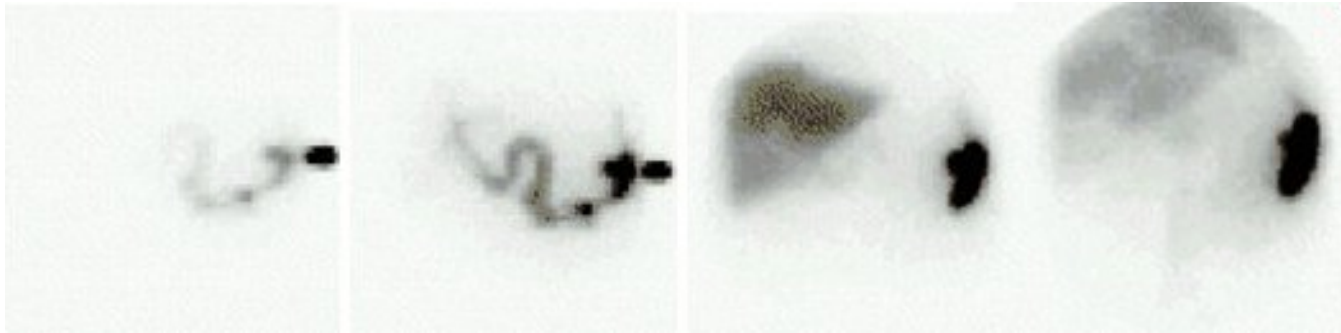
# PTC

(perkutánní  
transhepatální  
cholangiografie)



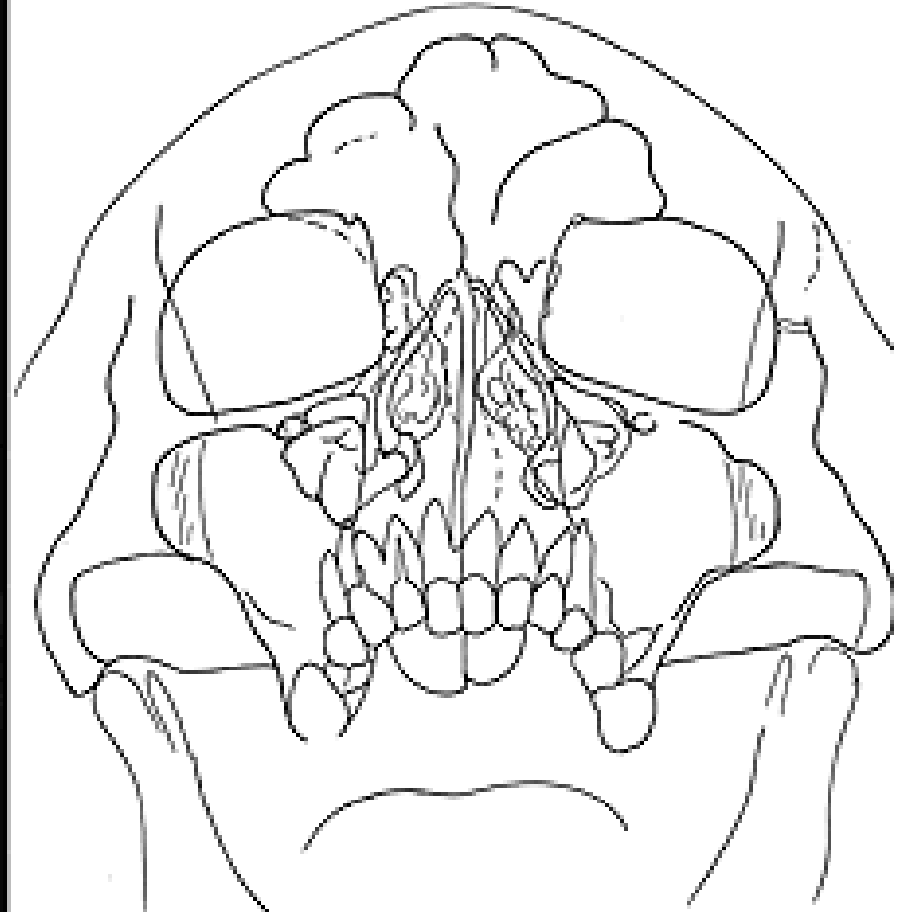


## Splenoportografie



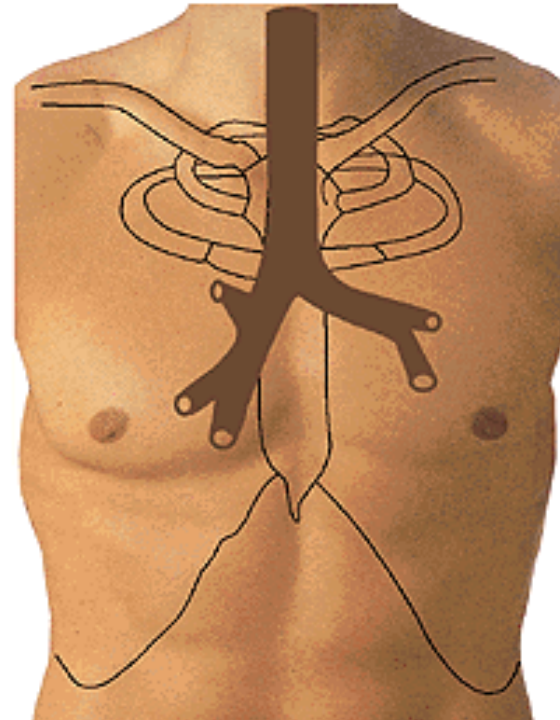
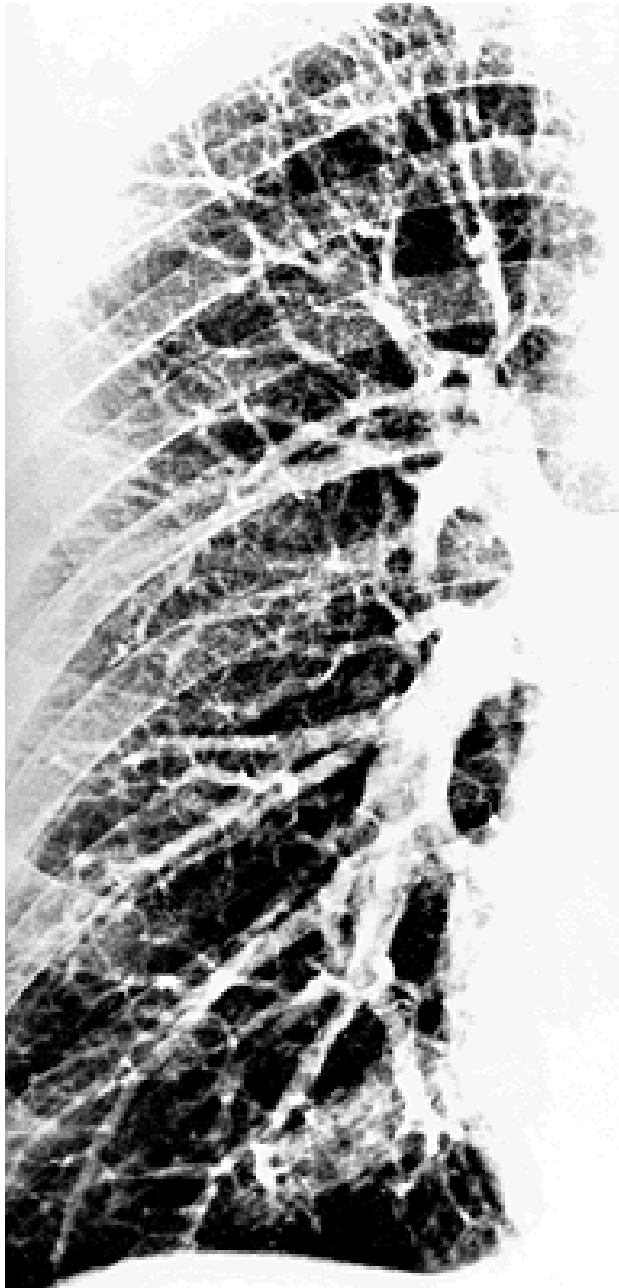
S radionuklidem

# Poloaxiální projekce na vyšetření vedlejších nosních dutin





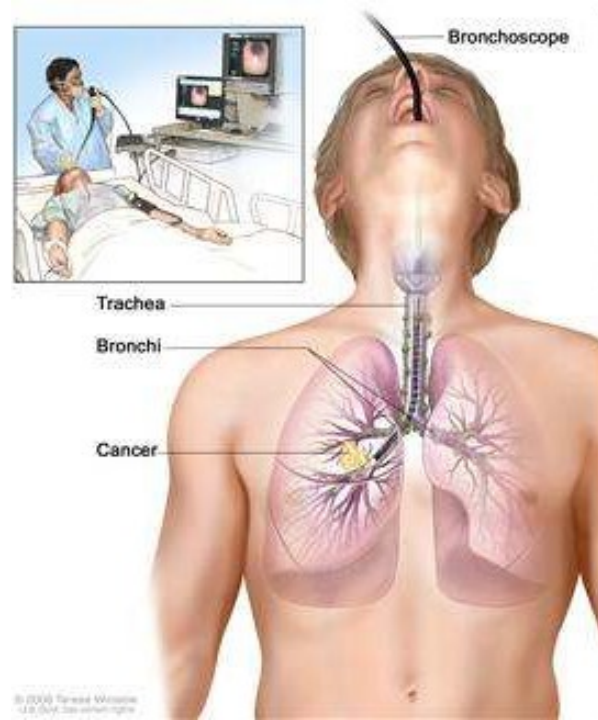
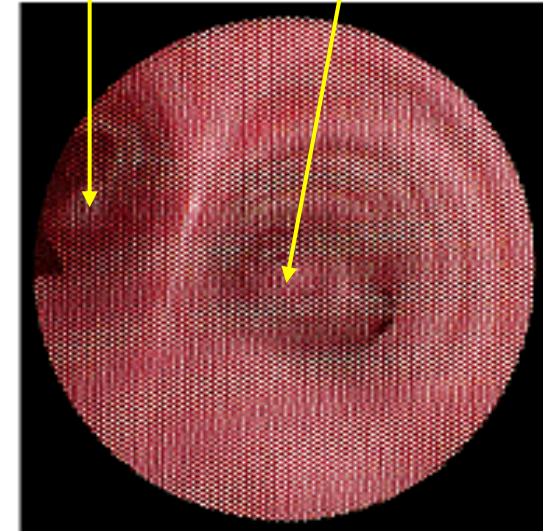
# Bronchografie



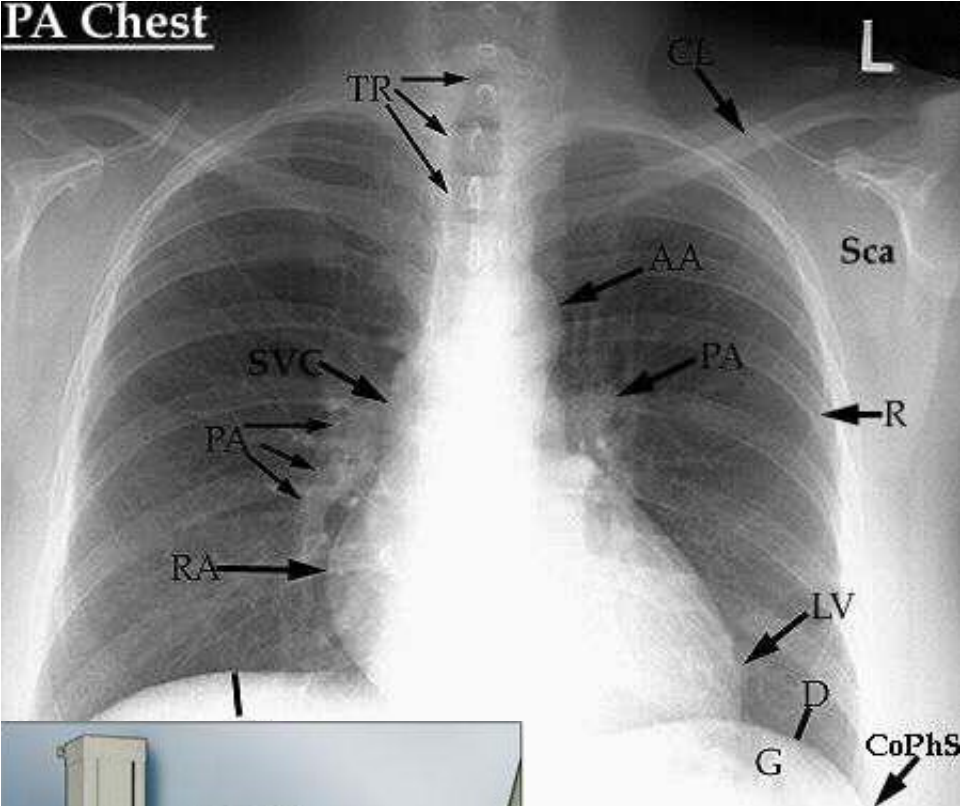
# Bronchoskopie

bronchus  
principalis sin.

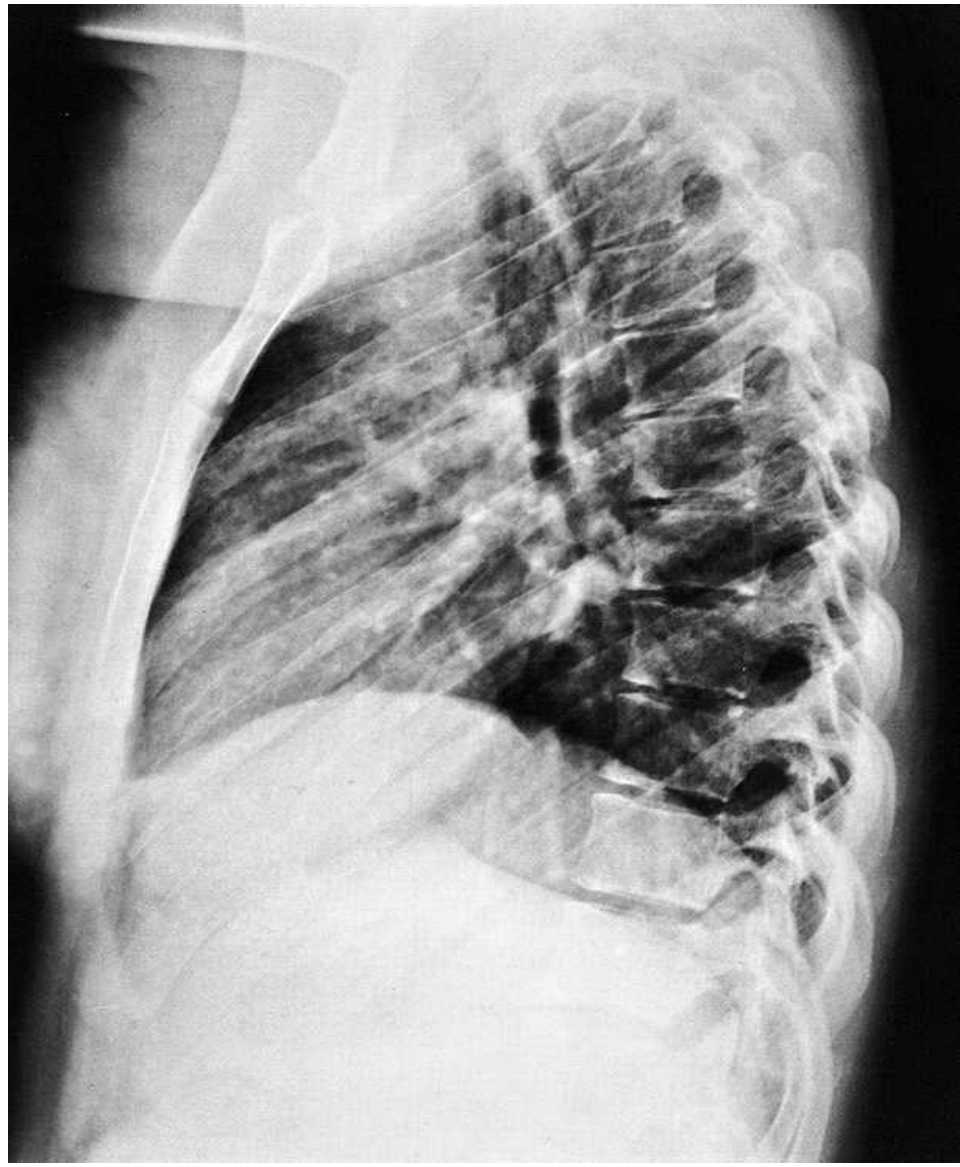
bronchus  
principalis dx.



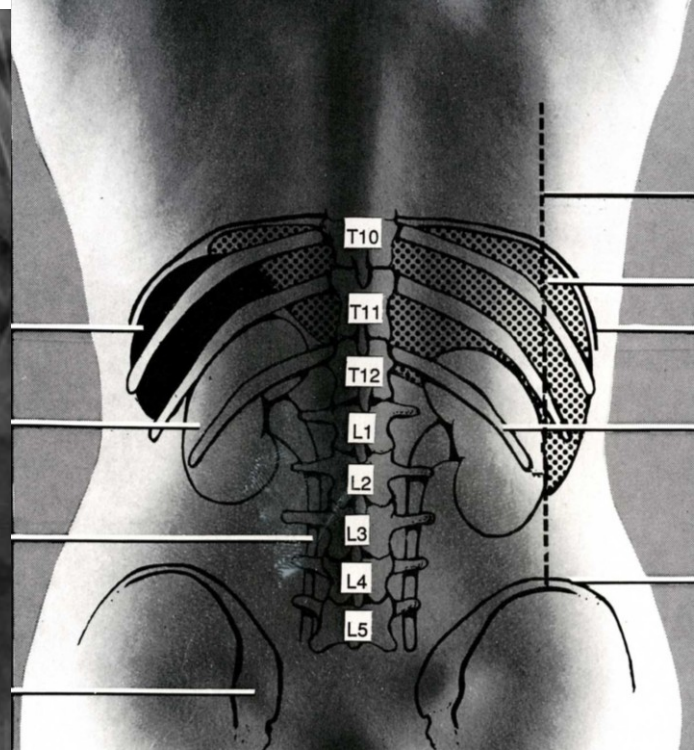
# PA Chest



# Nativní skiagrafie





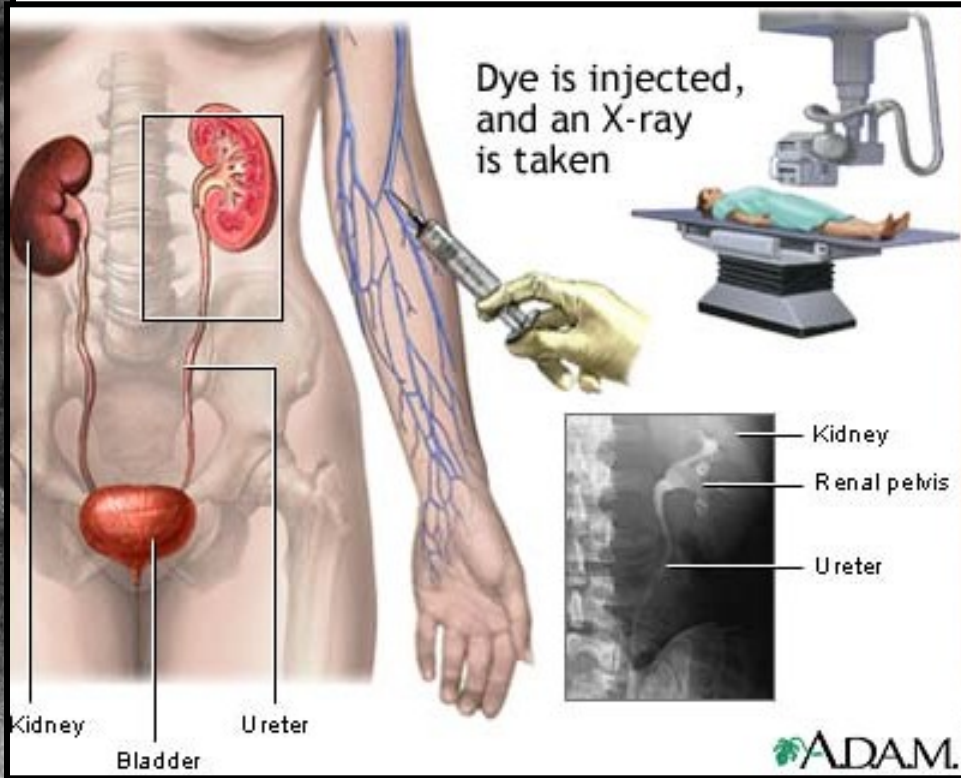
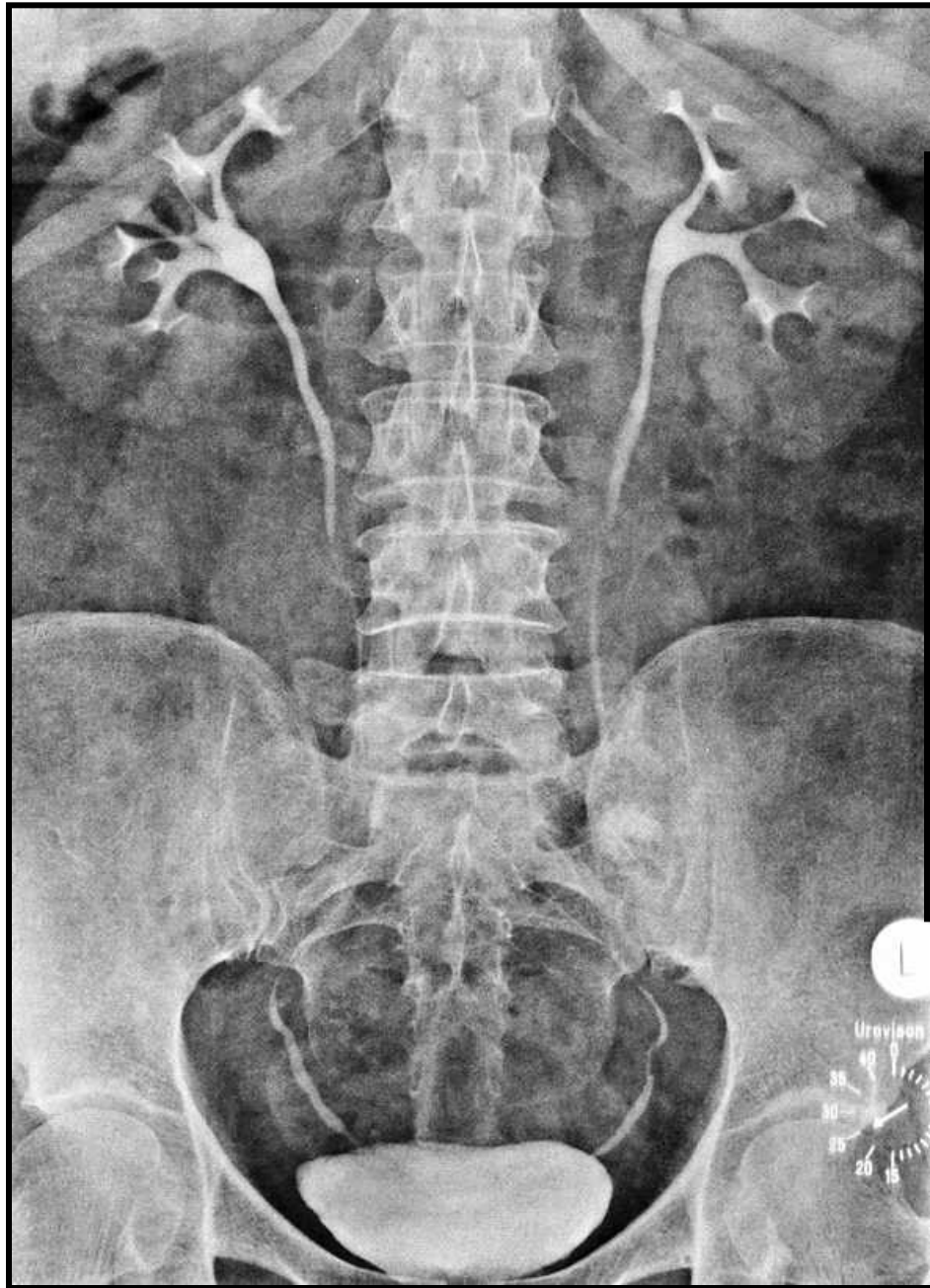


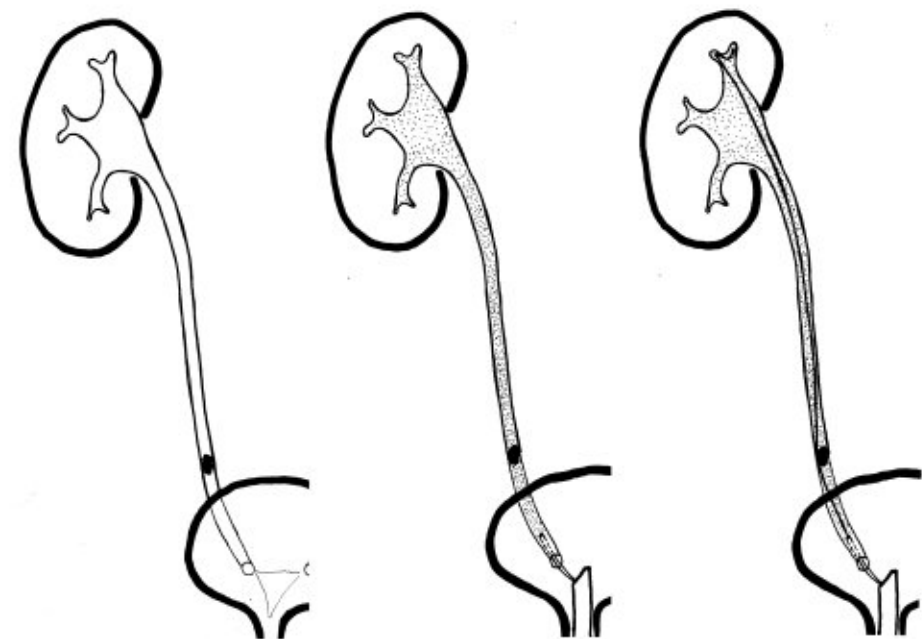
Dye is injected,  
and an X-ray  
is taken



**Nativní snímek  
ledvin**

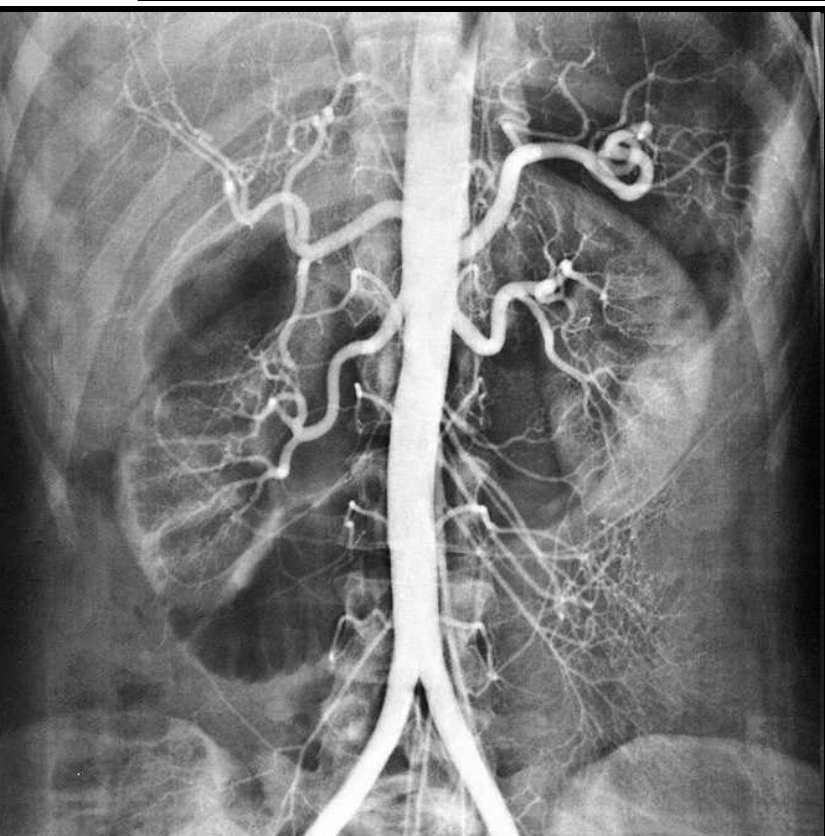
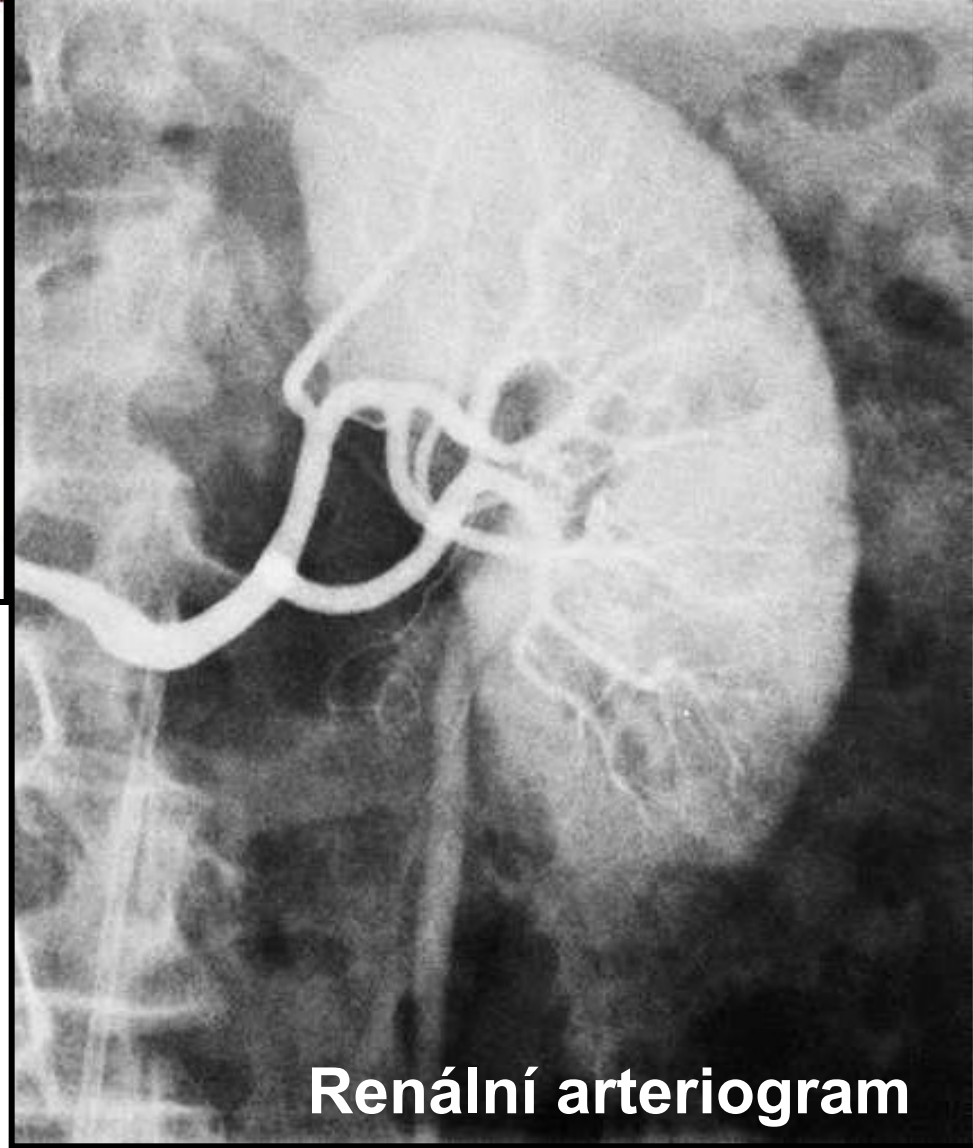
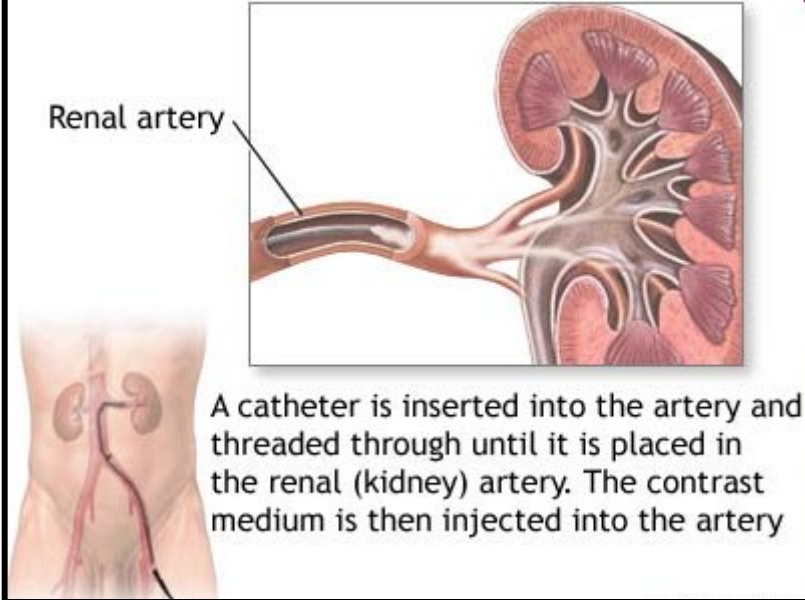
# Vylučovací urografie





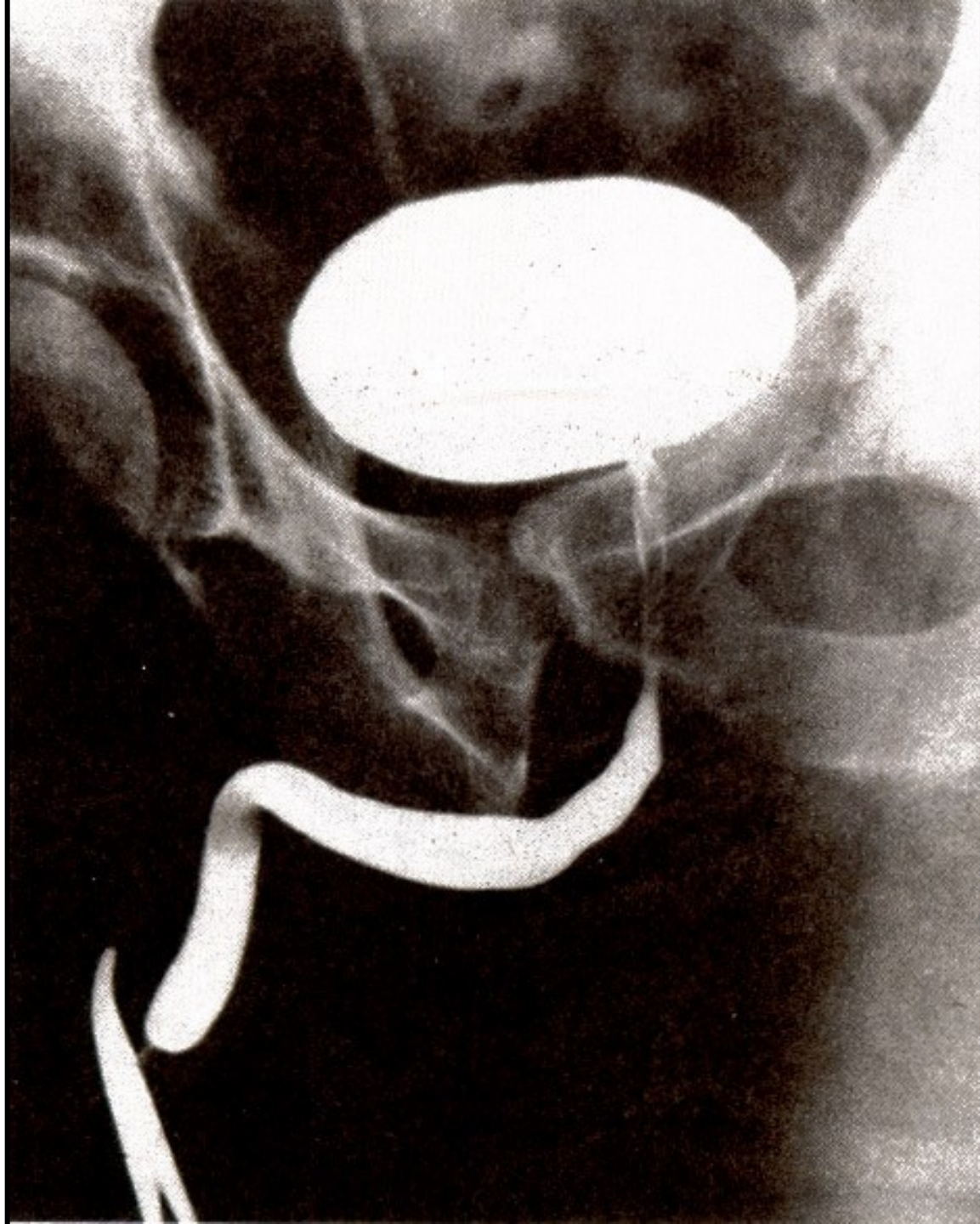
**Ascendentní pyelografie**



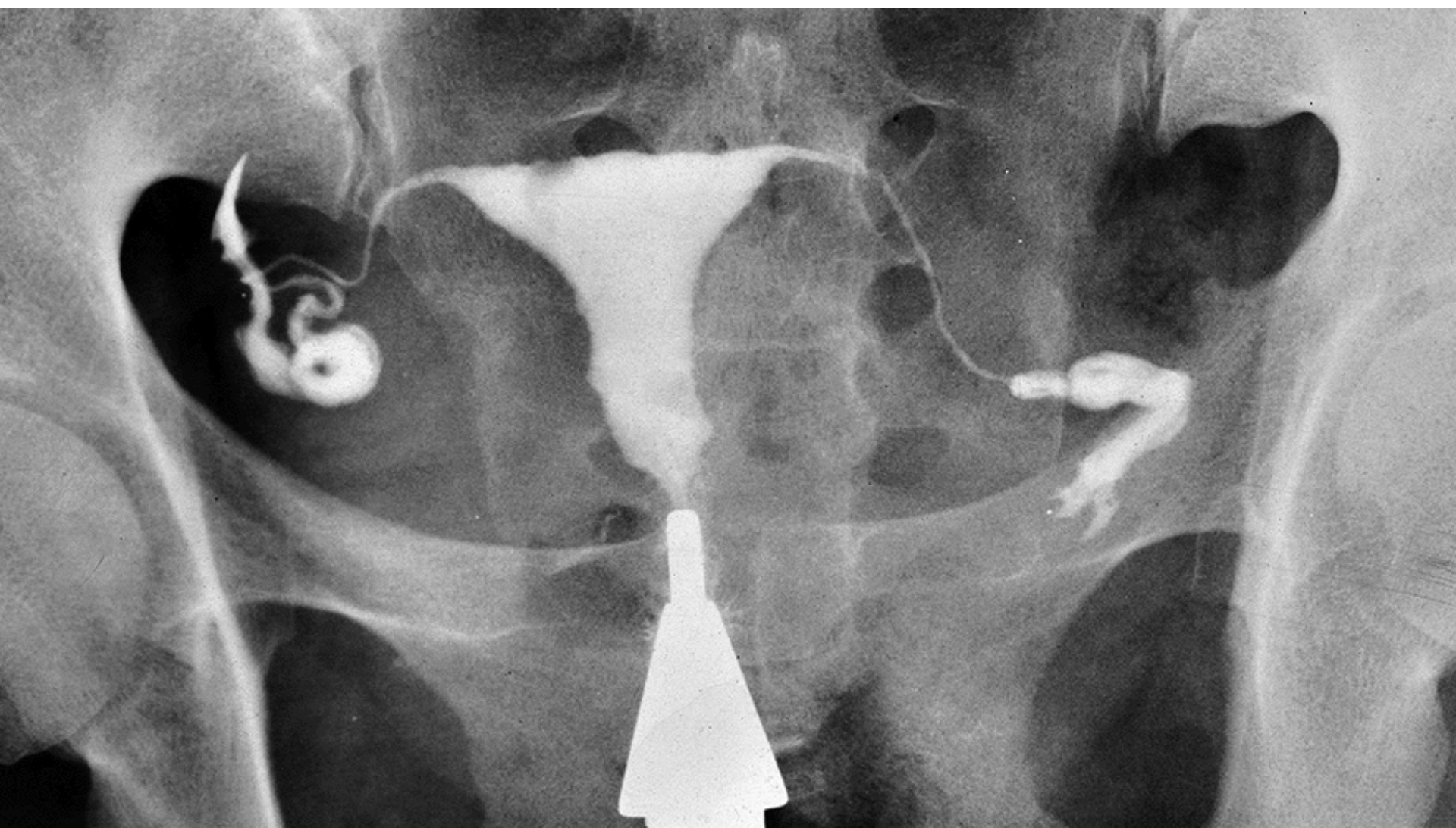


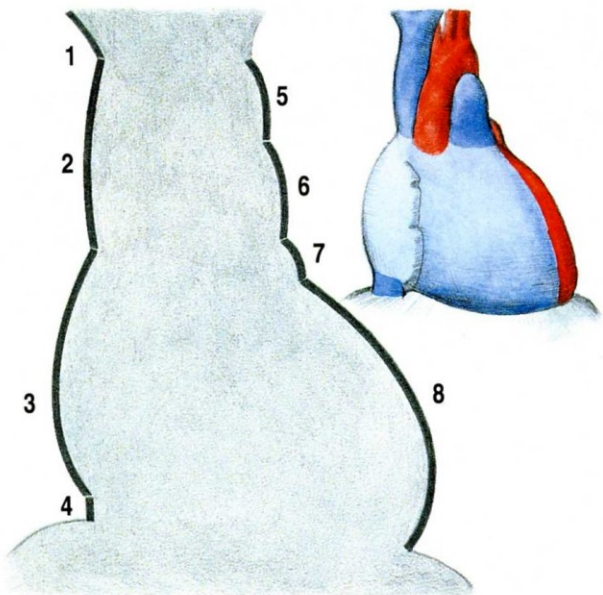
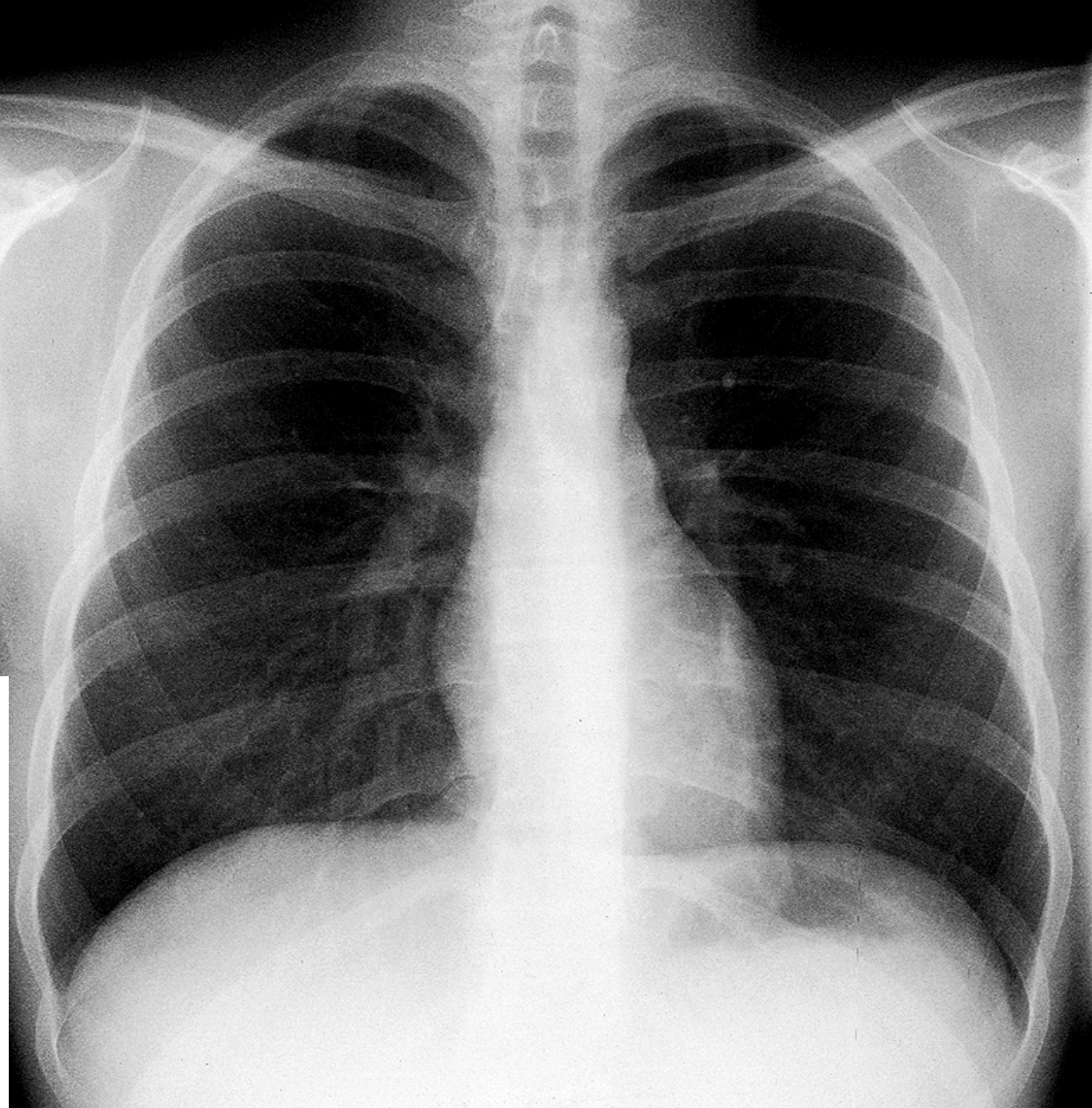
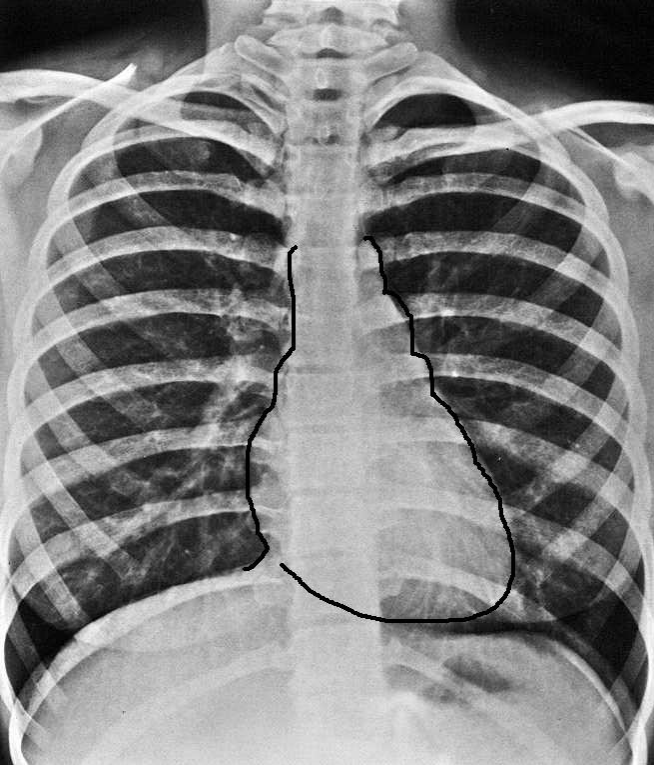
Abdominální aortogram

# Cystografie



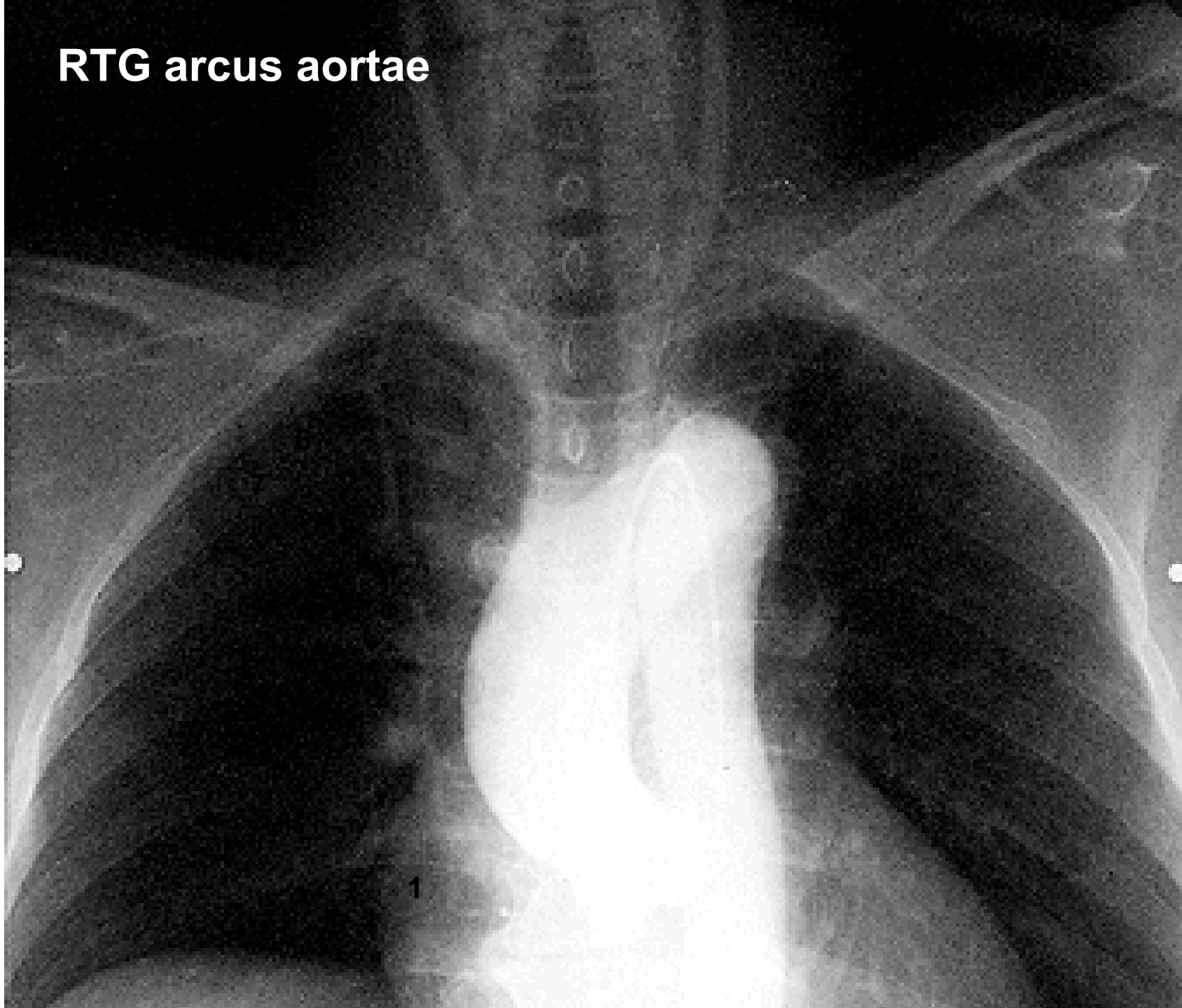
# Hysterosalpingografie





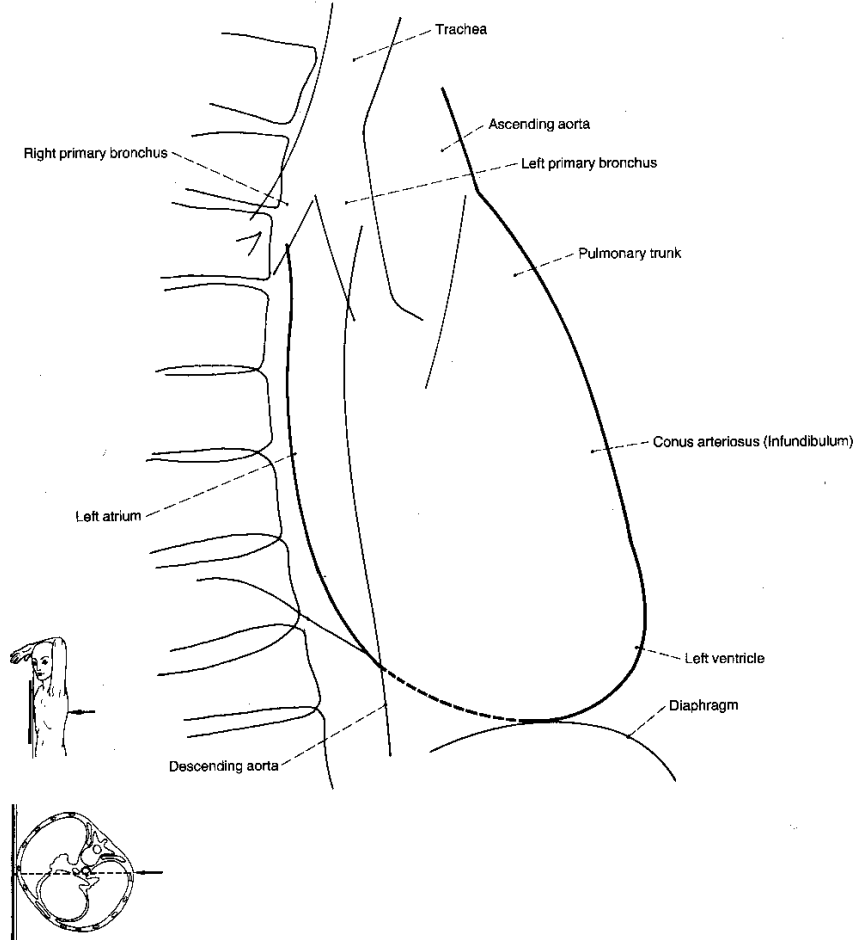
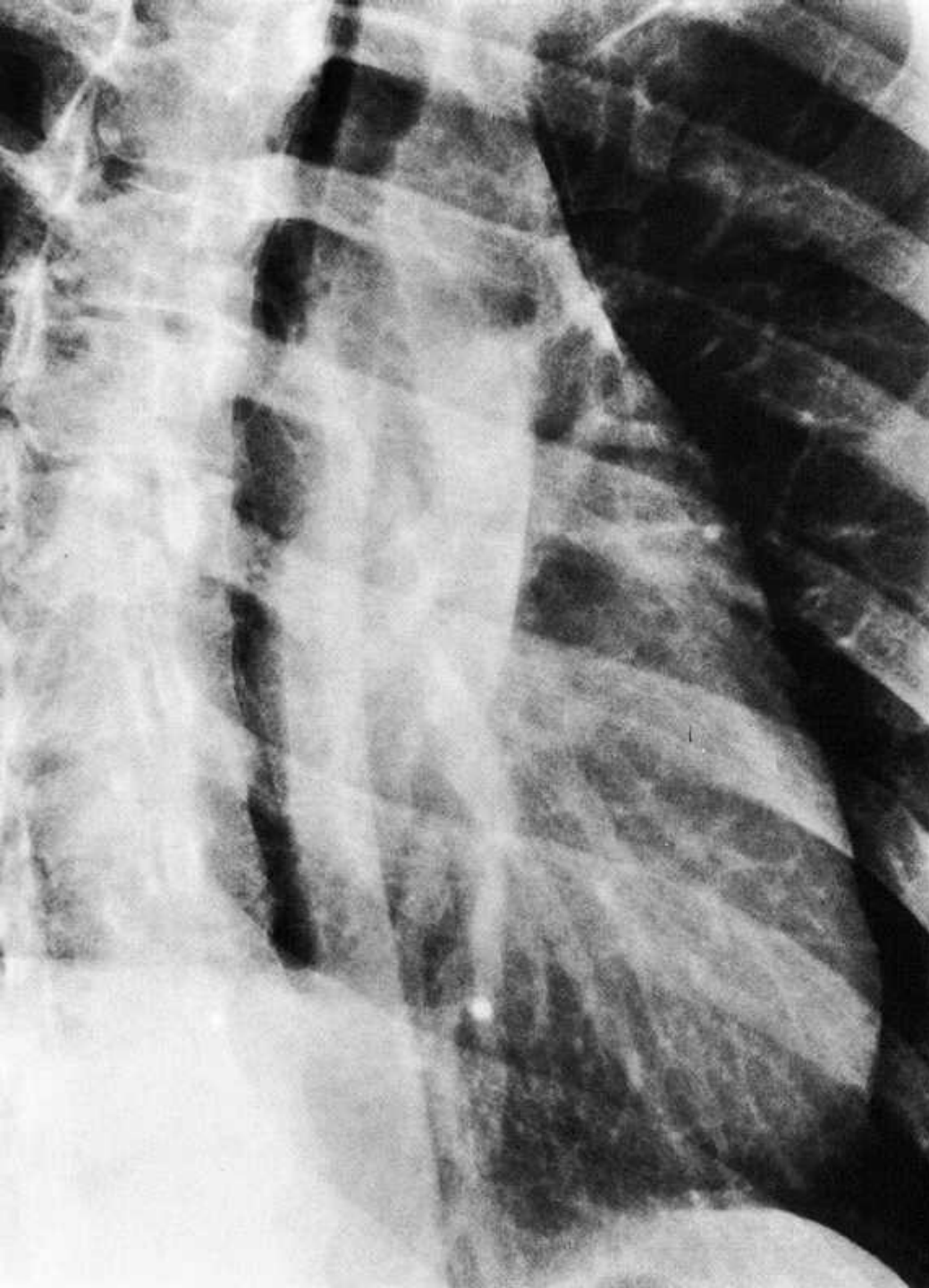
**RTG- zadopřední projekce**

**RTG arcus aortae**

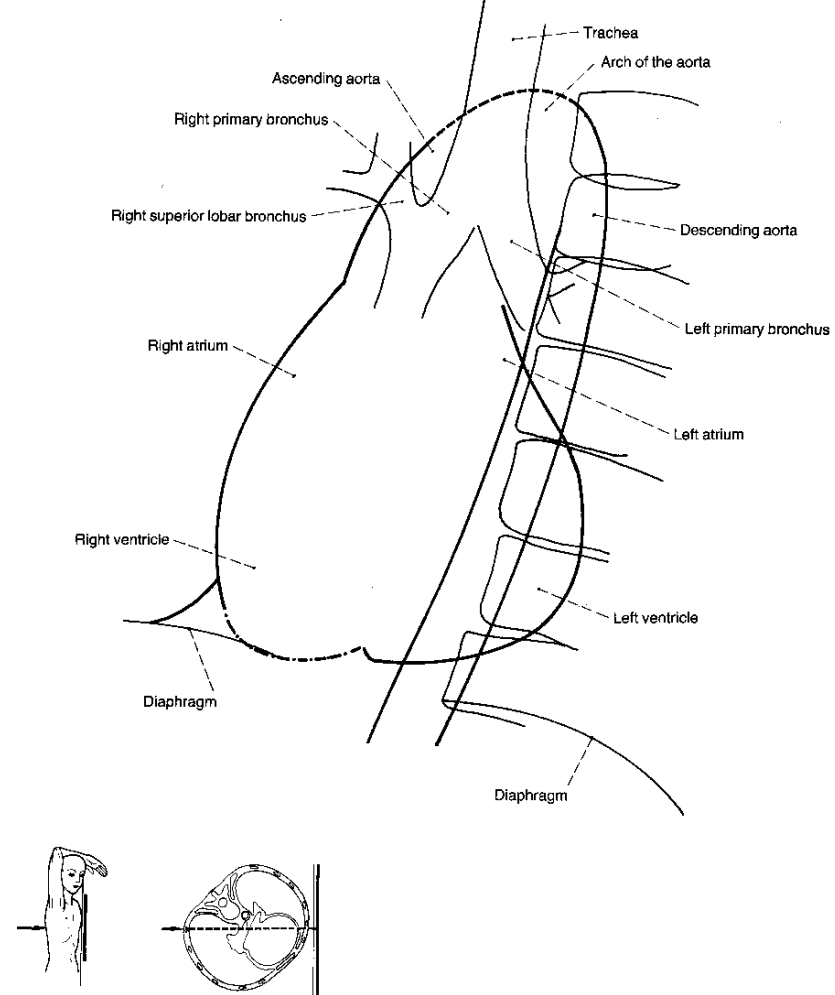
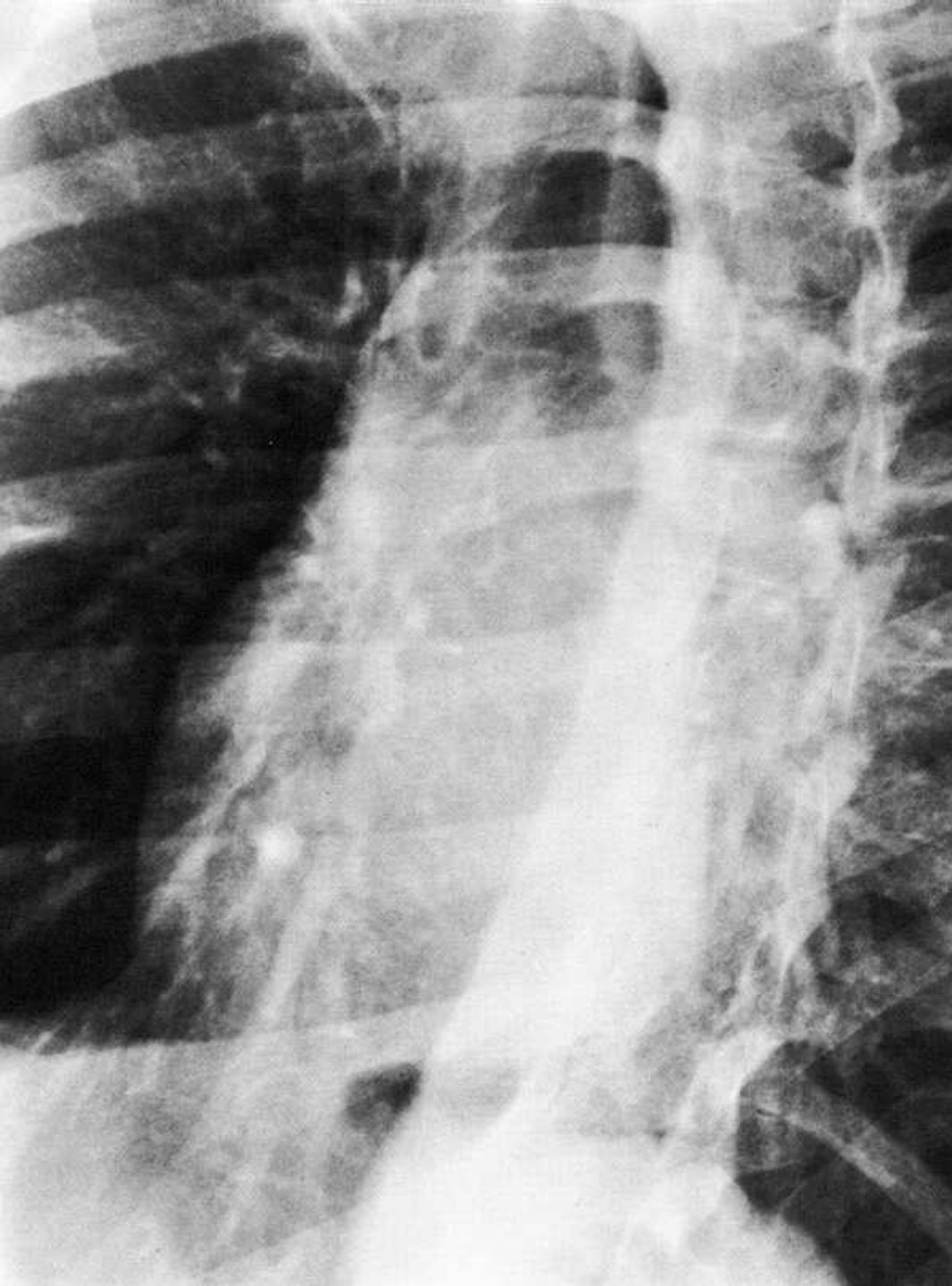


1



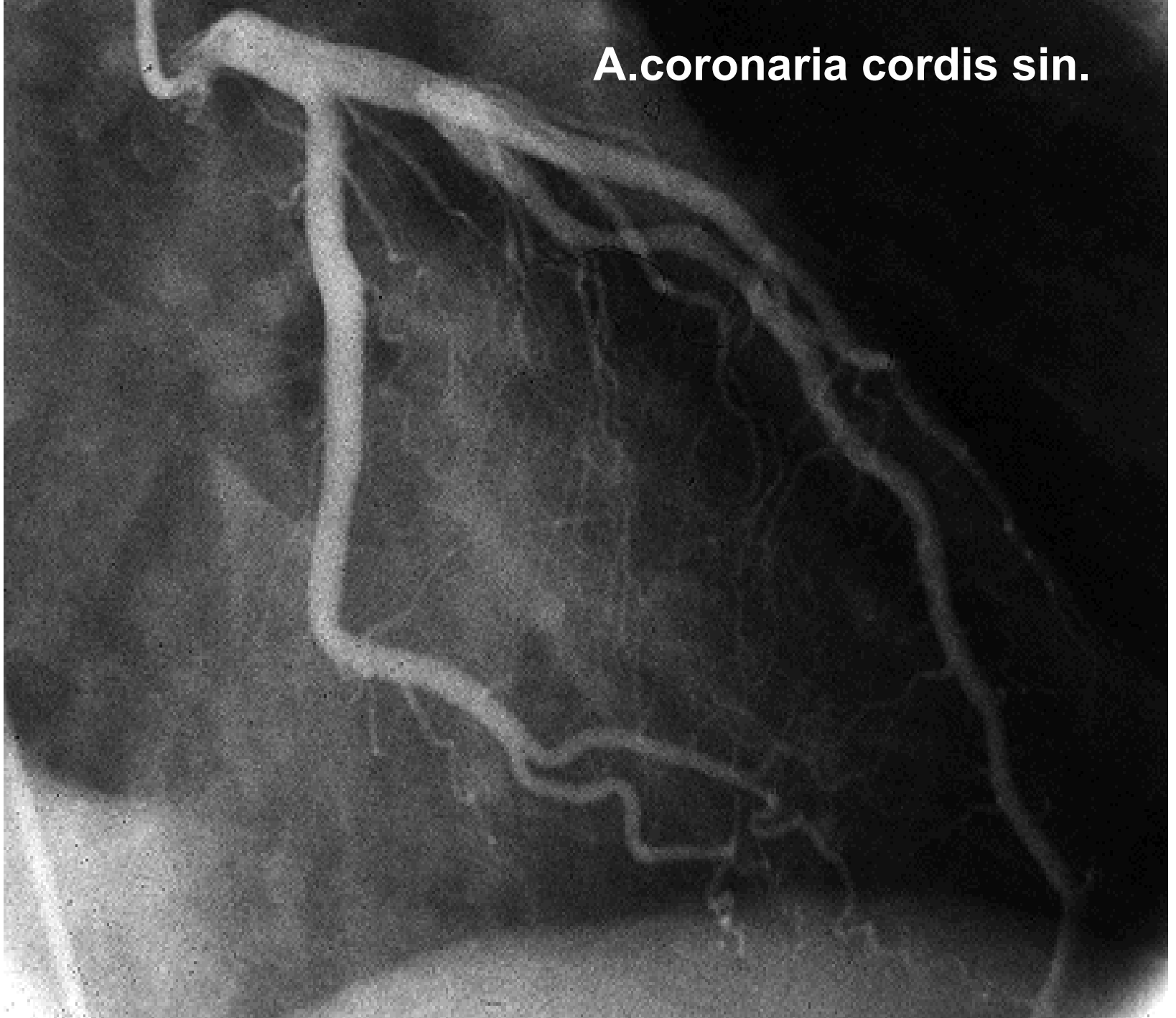


**Šikmá šermýřská**



**Šikmá boxerská**

**A.coronaria cordis sin.**



**A.coronaria cordis dx.**

