















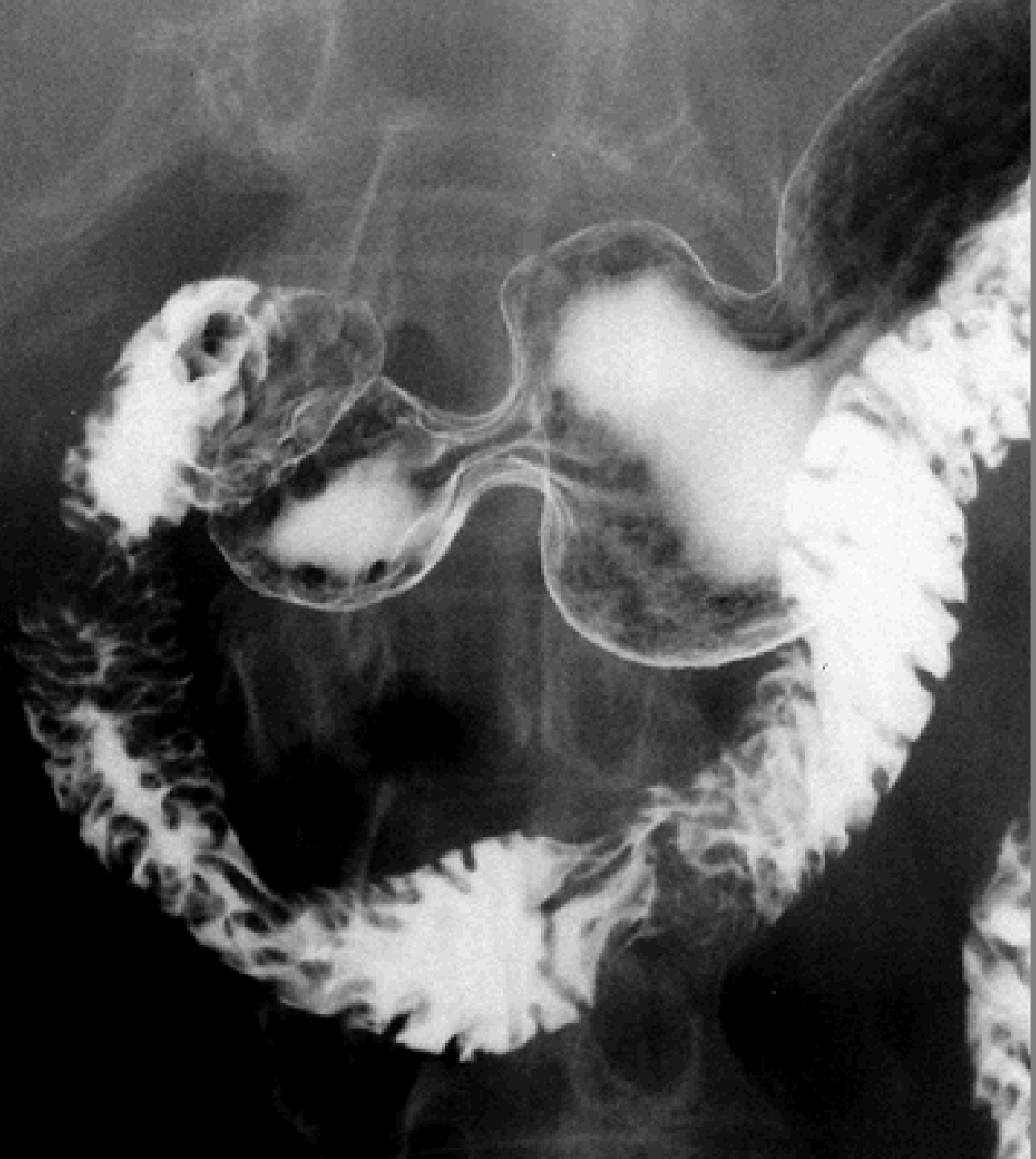
OESOPHAGOGGRAPHY

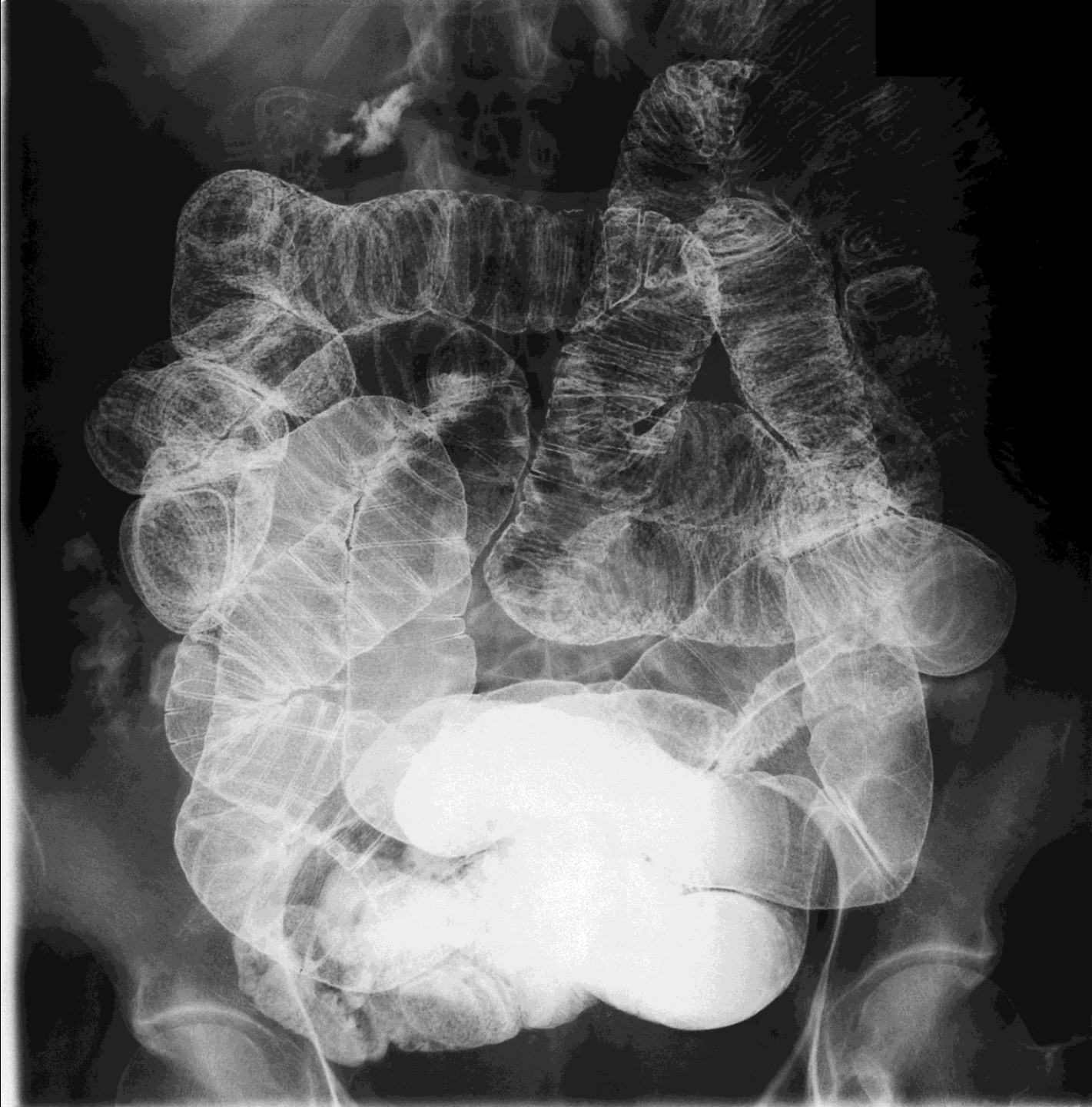


GASTROGRAPHY

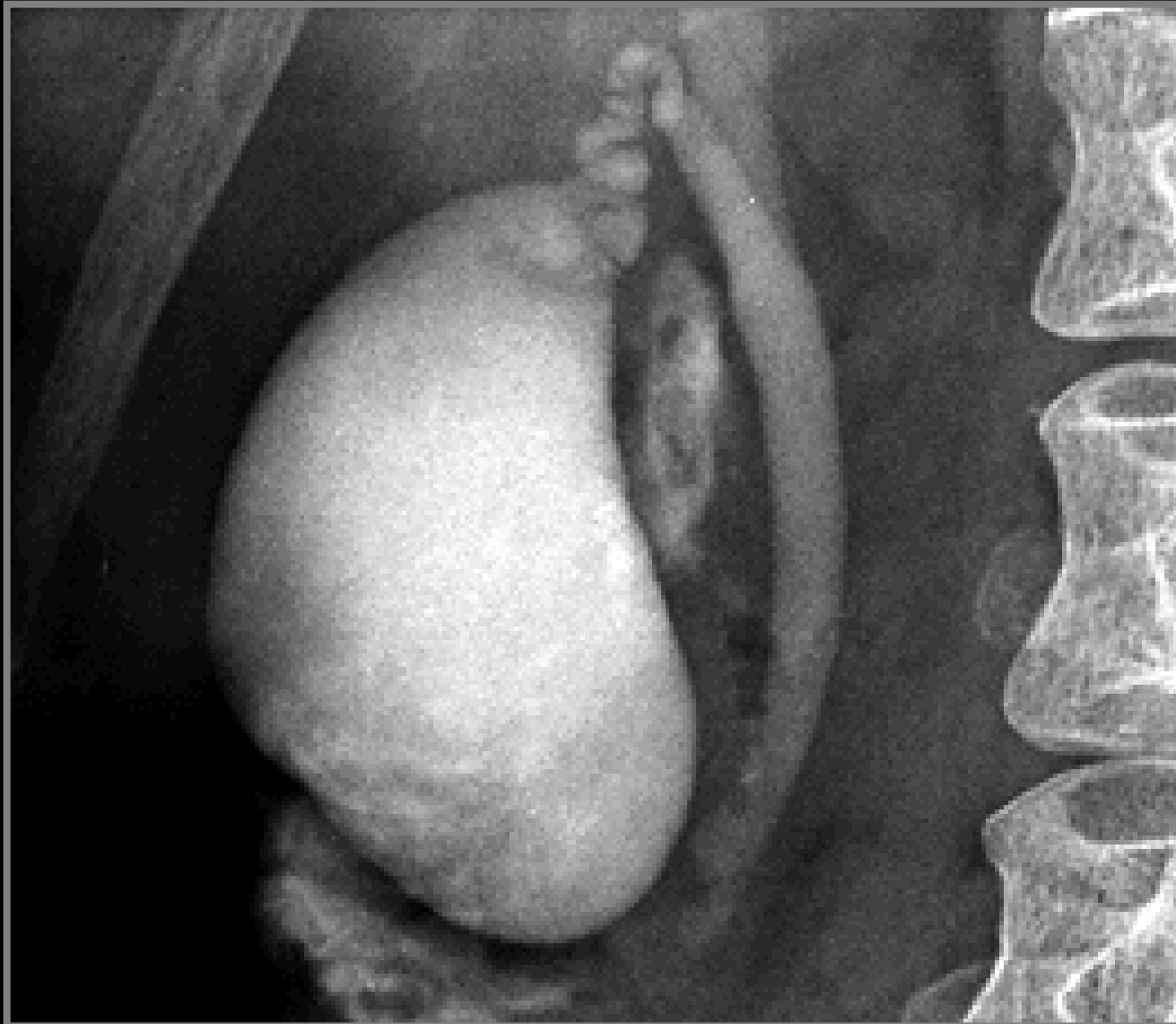






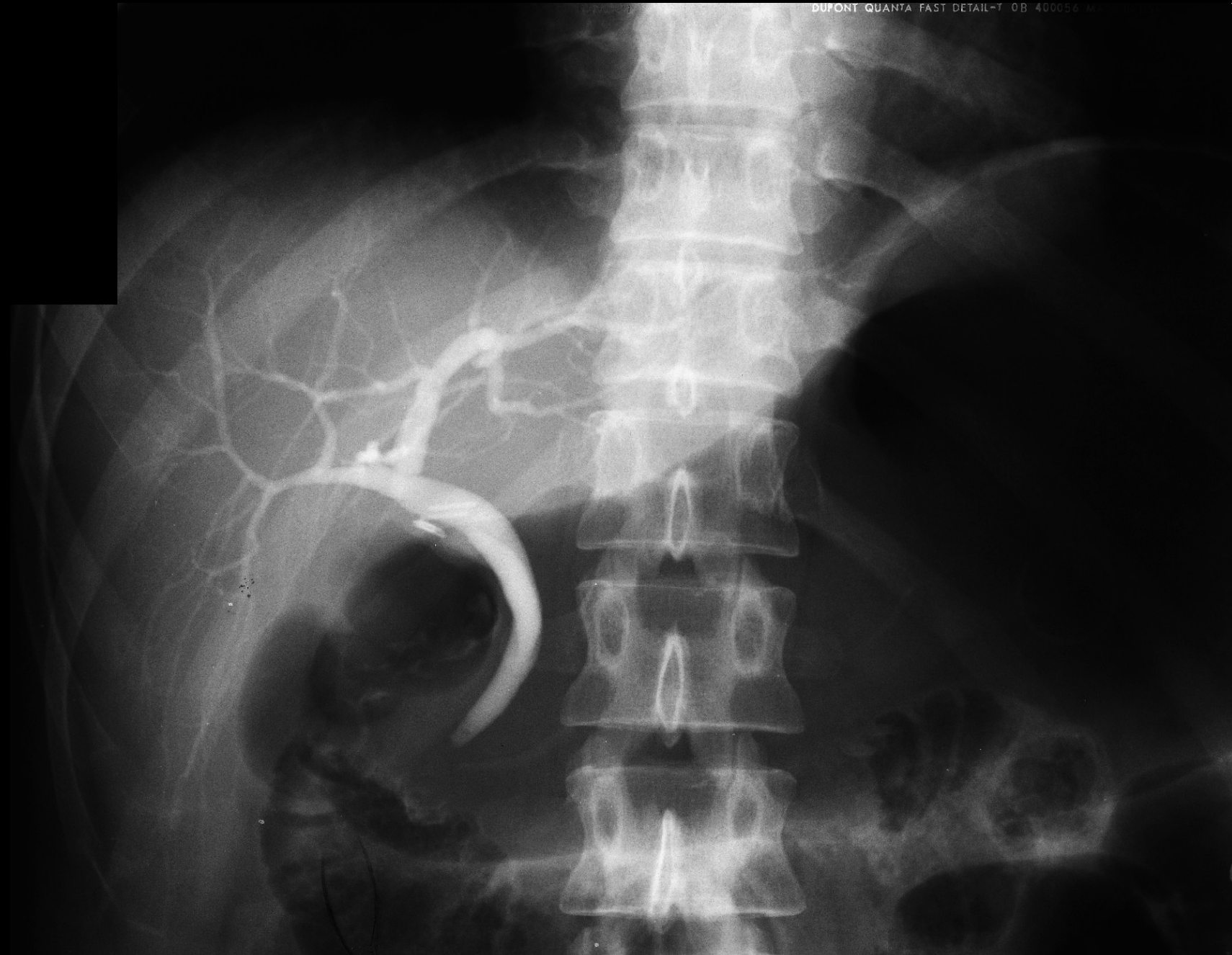


CHOLECYSTOGRAPHY



CHOLANGIOGRAPHY

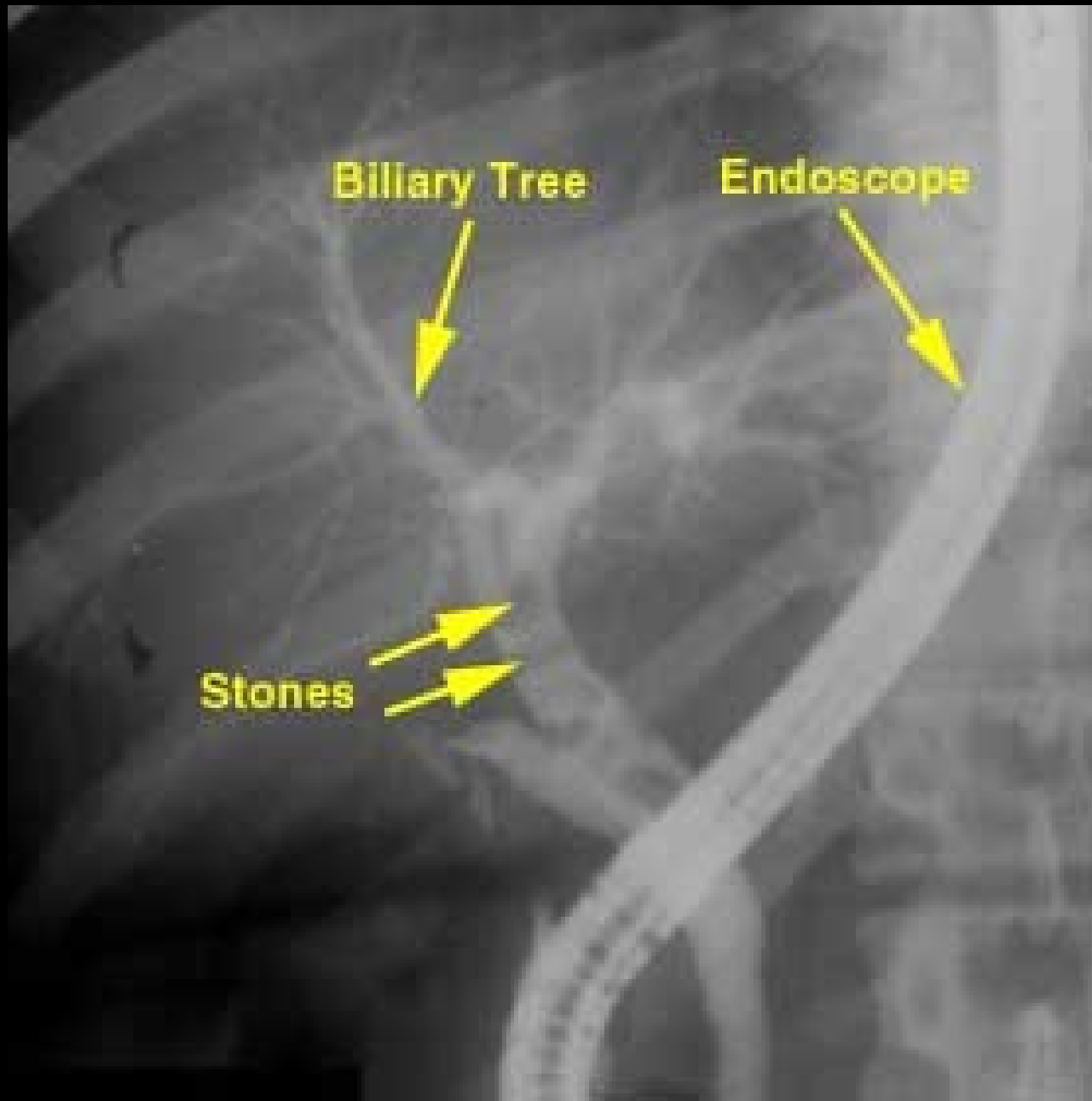
DUPONT QUANTA FAST DETAIL-T 0B 400056



DUPONT QUANTA FAST DETAIL-T 0B 400056



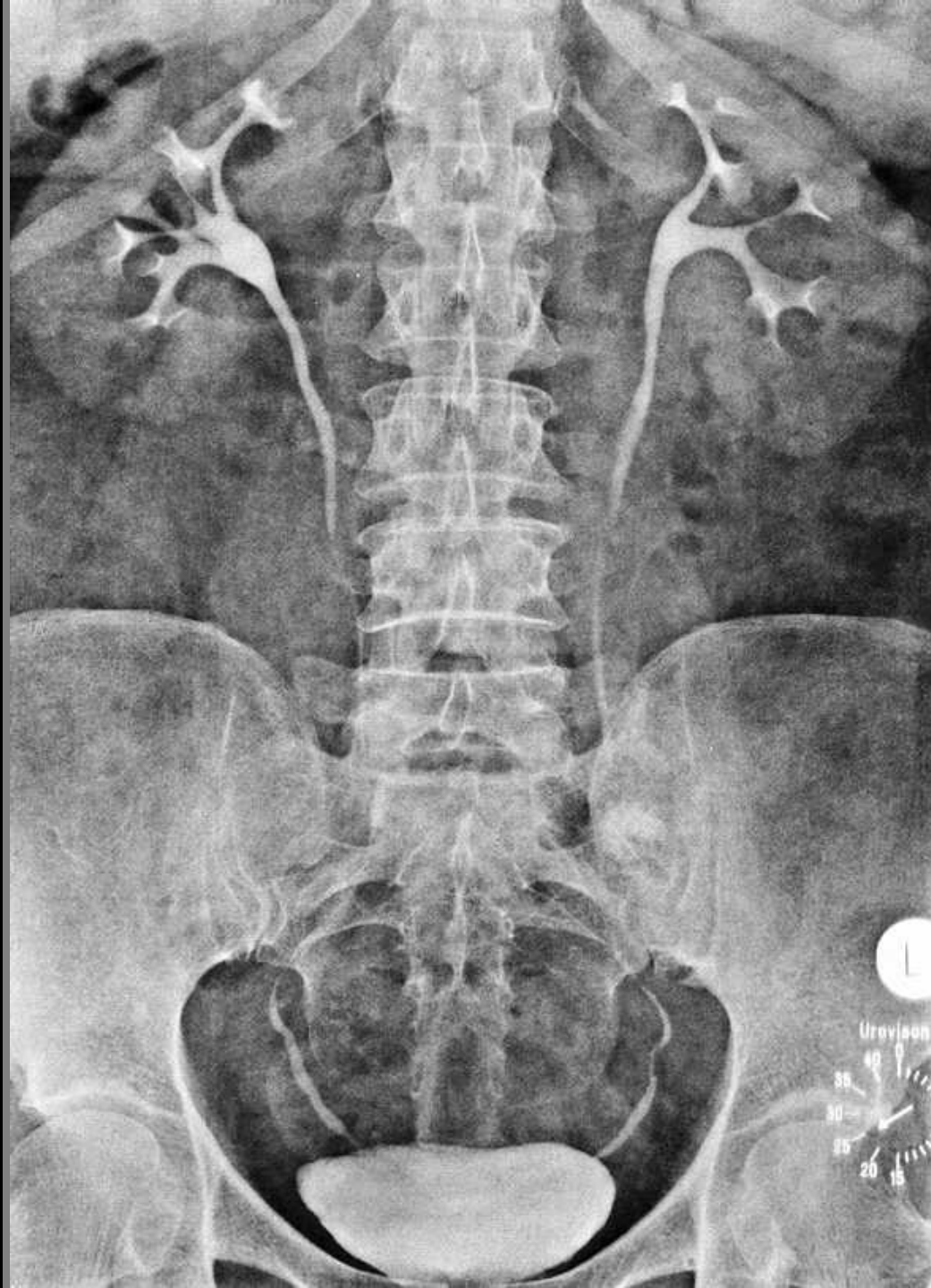
ENDOSCOPIC RETROGRADE CHOLANGIO-PANCREATOGRAPHY



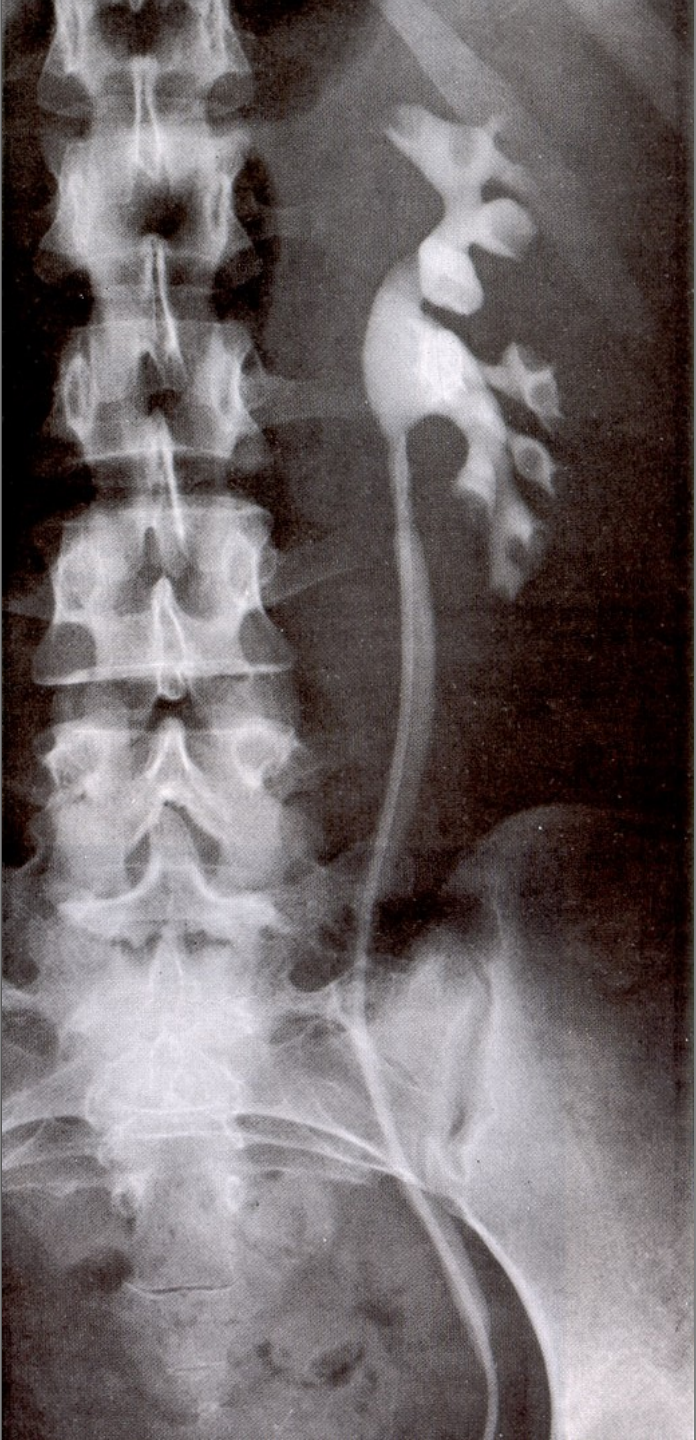
IRIGOGRAPHY (BARIUM ENEMA)



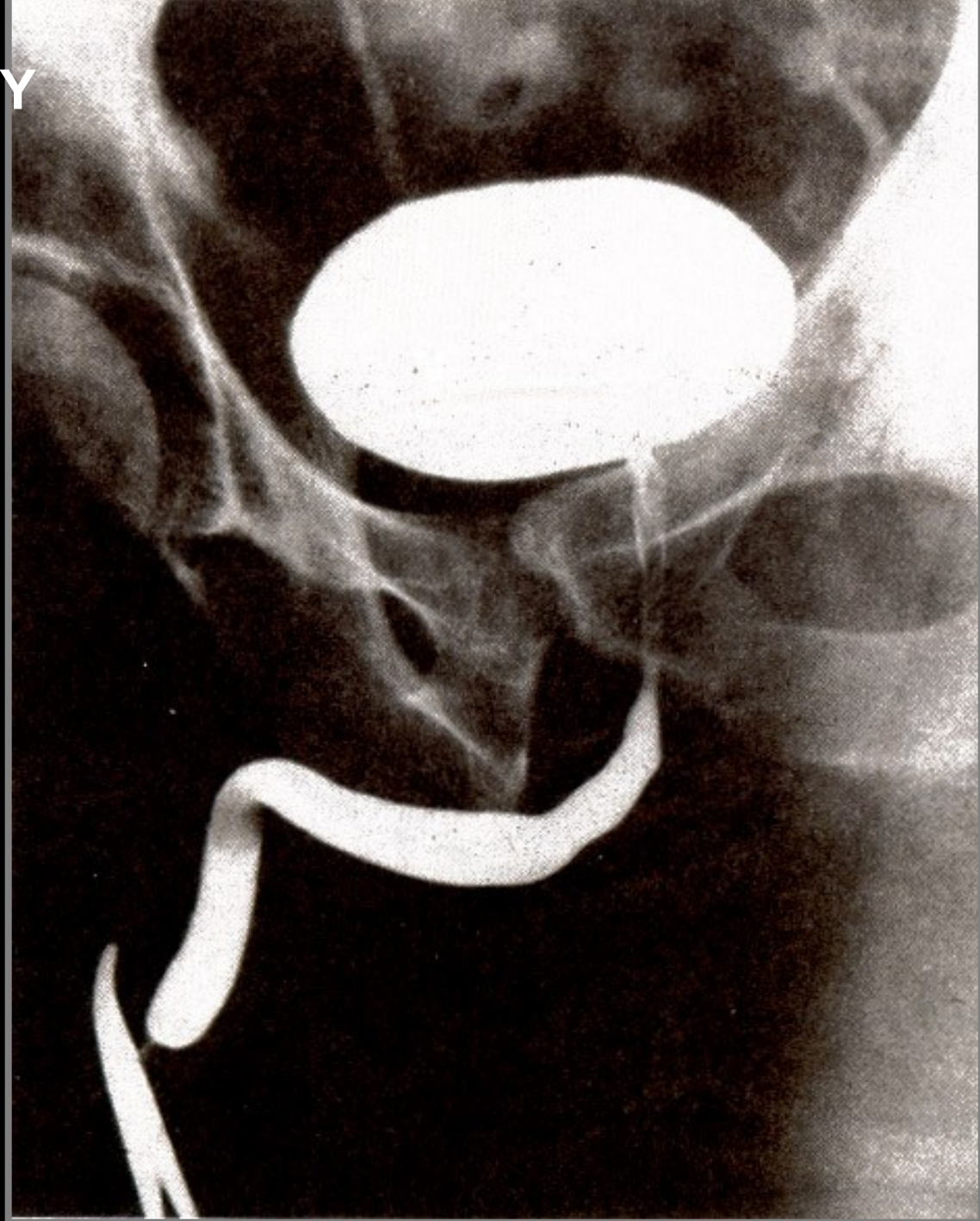
**INTRAVENOUS
UROGRAPHY
(PYELOGRAPHY)**



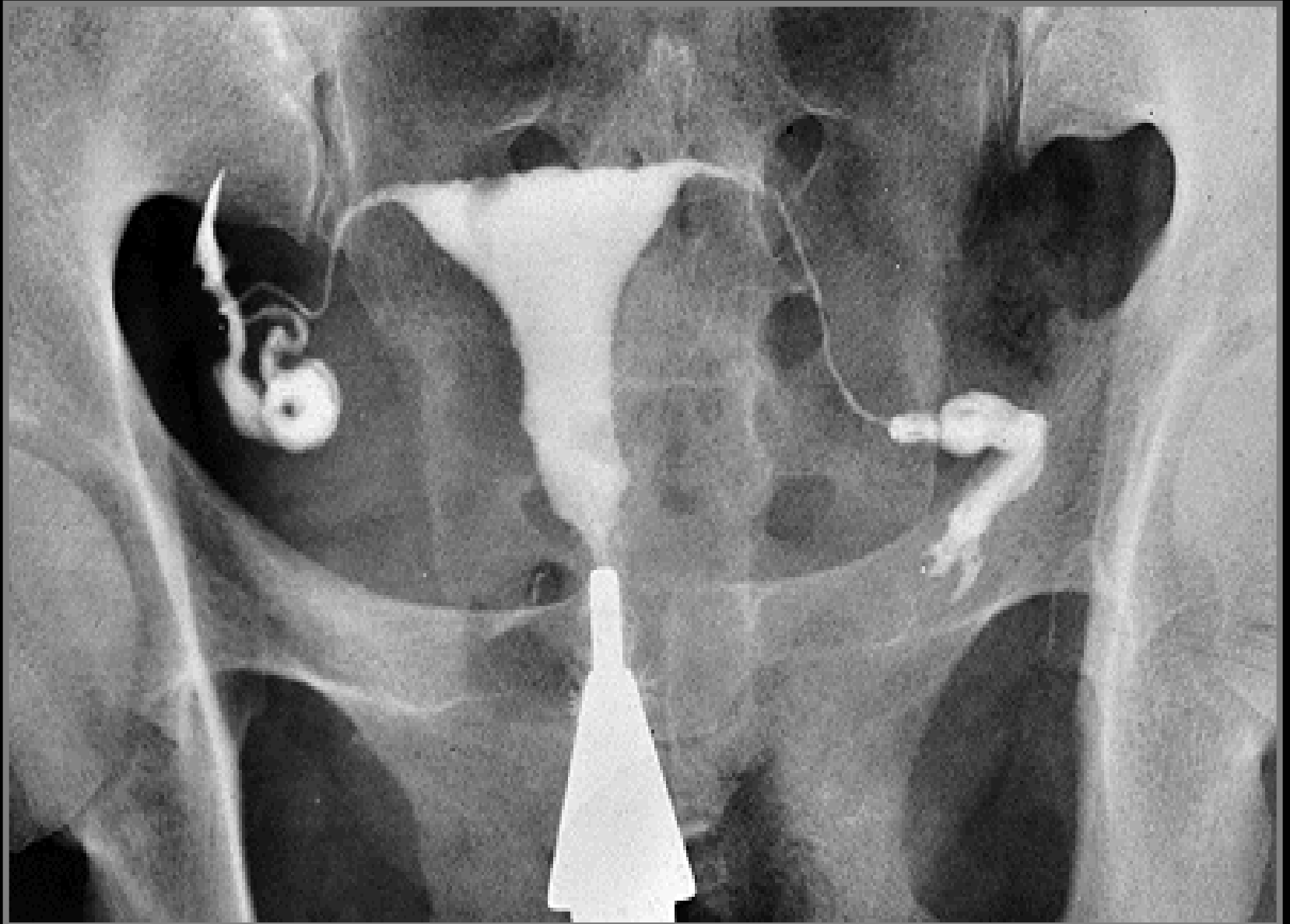
**ASCENDING
(RETROGRADE)
PYELOGRAPHY**



CYSTOGRAPHY

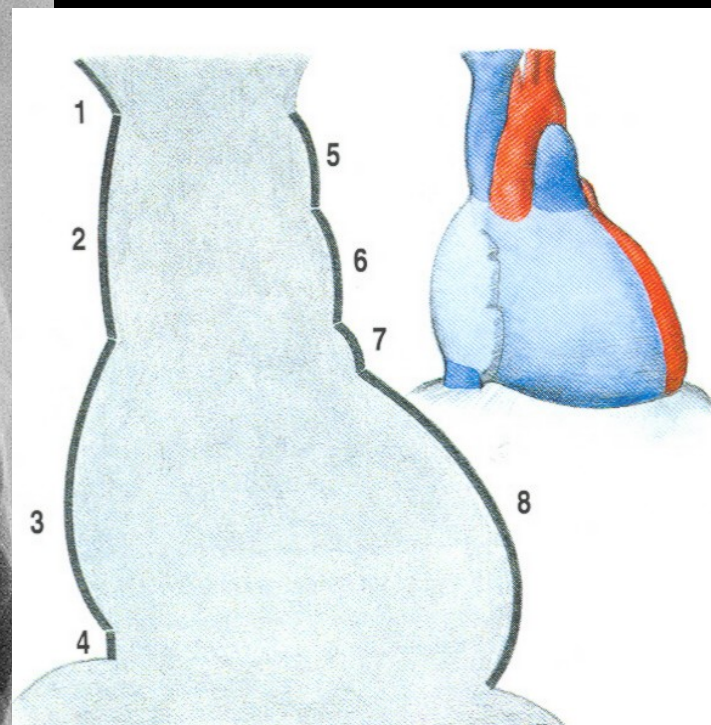
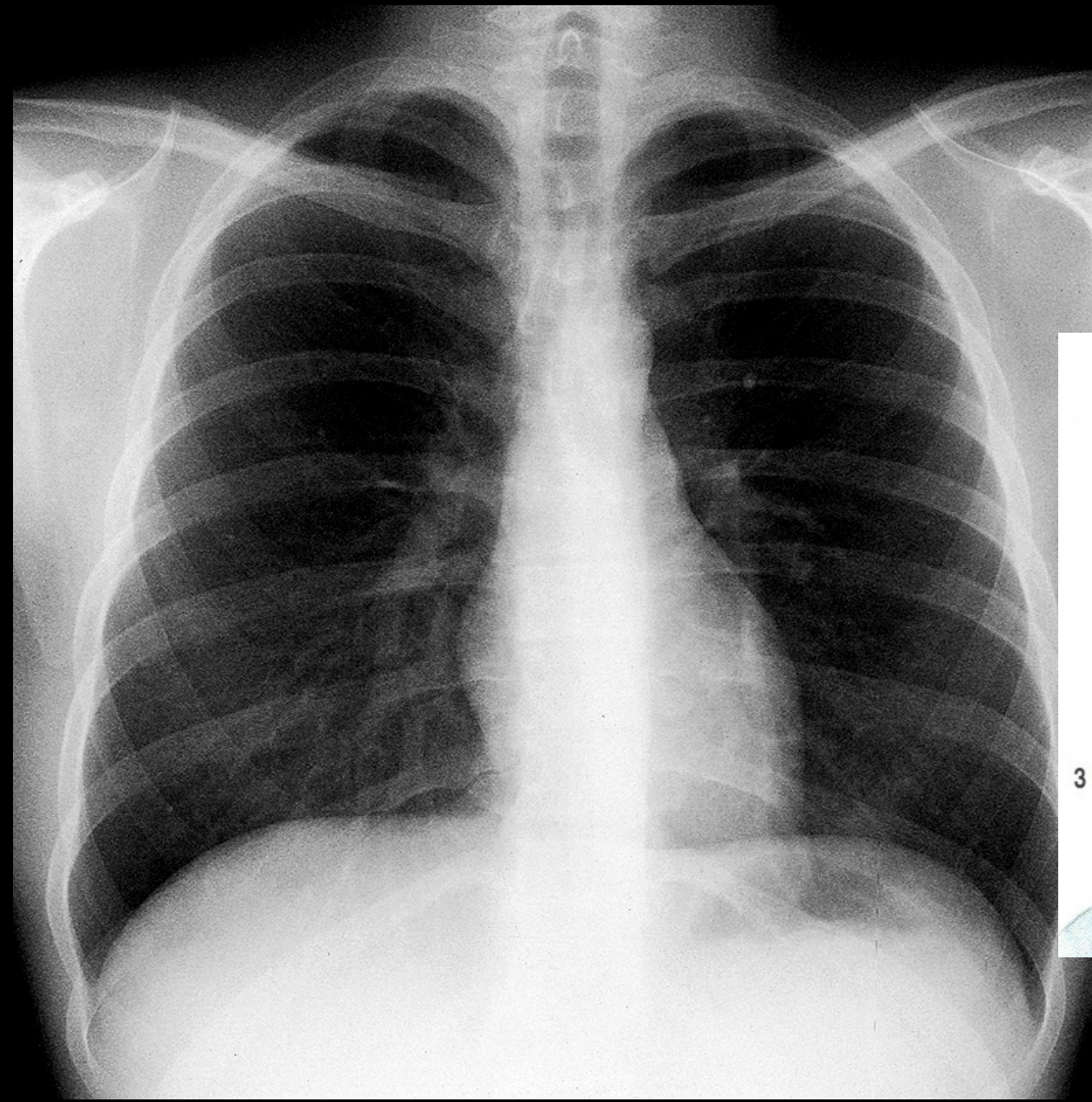


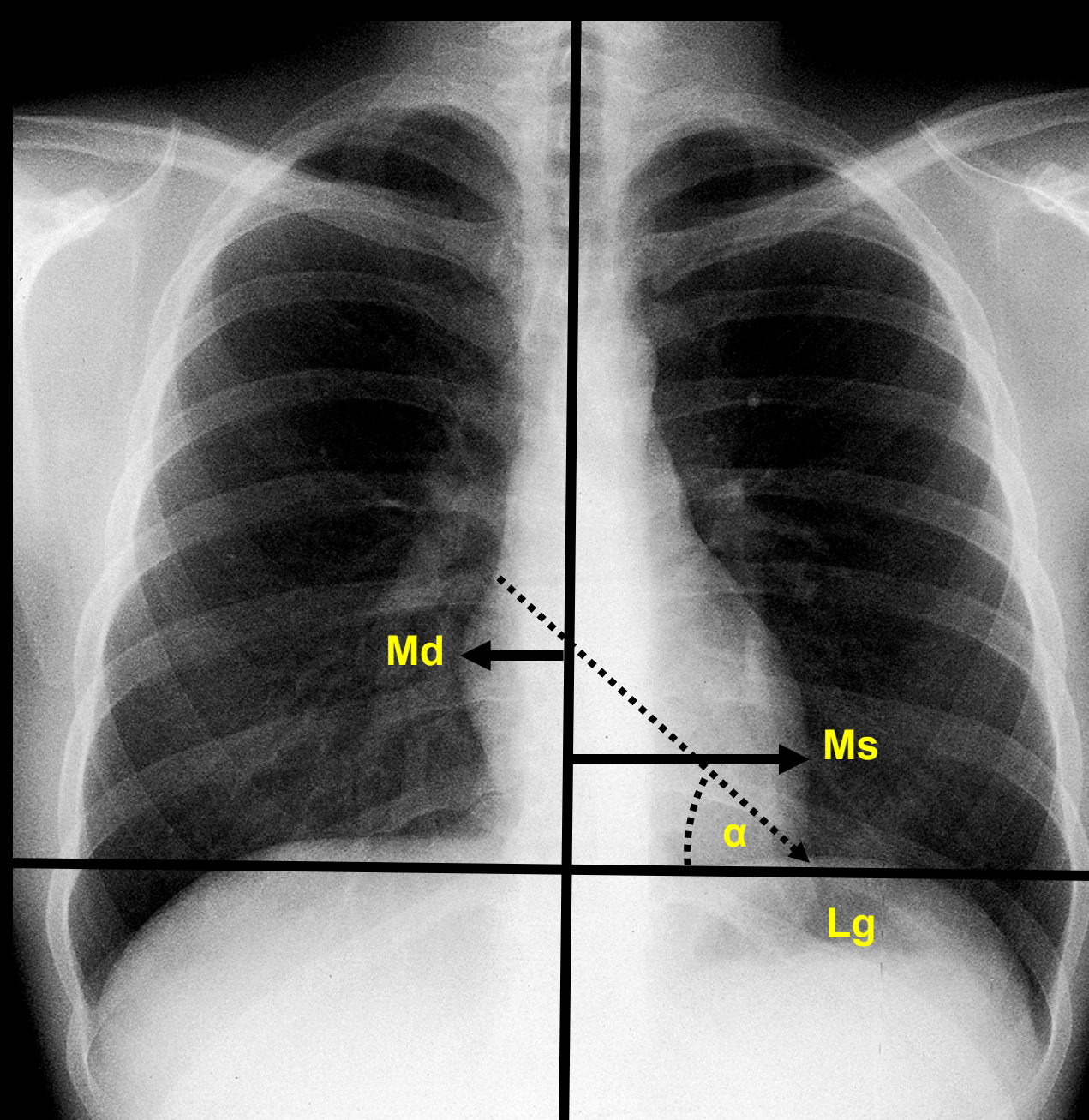
HYSTEOSALPINGOGRAPHY



SEMINAL VESICULOGRAM







Md - distantia mediodextra
4 - 4,5 cm

Ms - distantia mediosinistra
8 - 9 cm

Transverse line of the heart
 $Md + Ms = do\ 15\ cm$

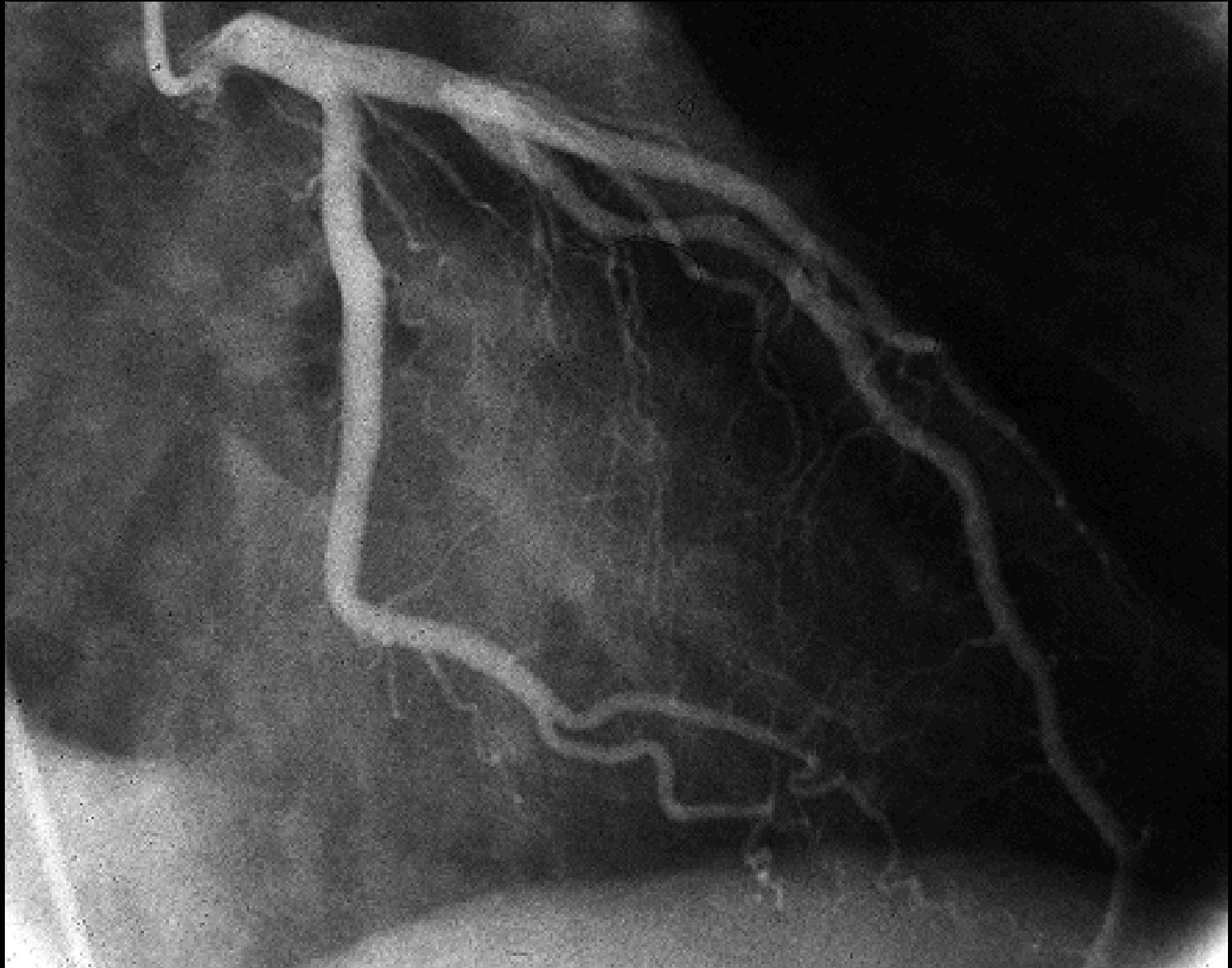
Lg (longitudo) - length of the heart

α - inclination of the heart
 $= 45^\circ$

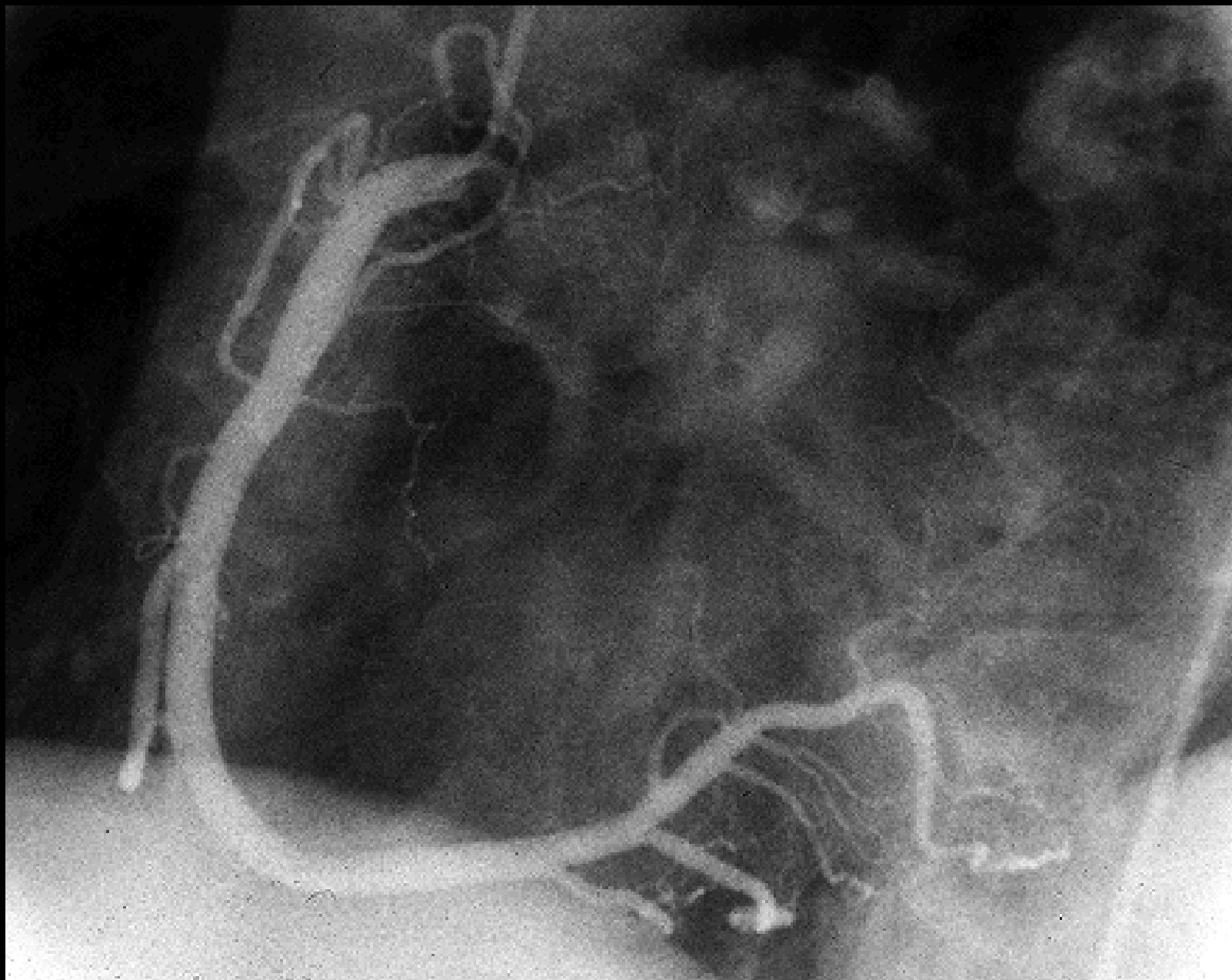
horizontal line

median plane

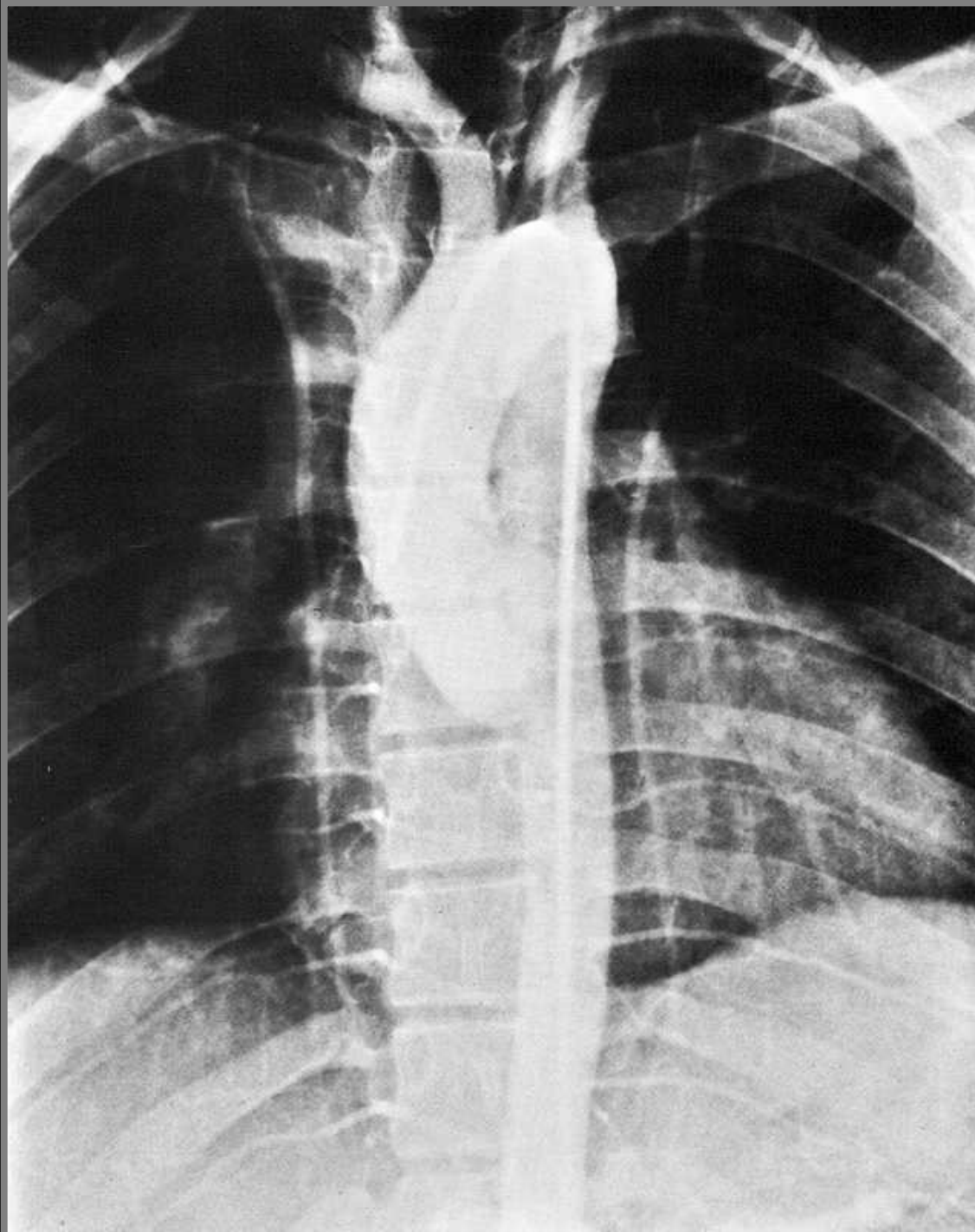
LEFT CORONARY ARTERY – RIGHT ANTERIOR OBLIQUE VIEW



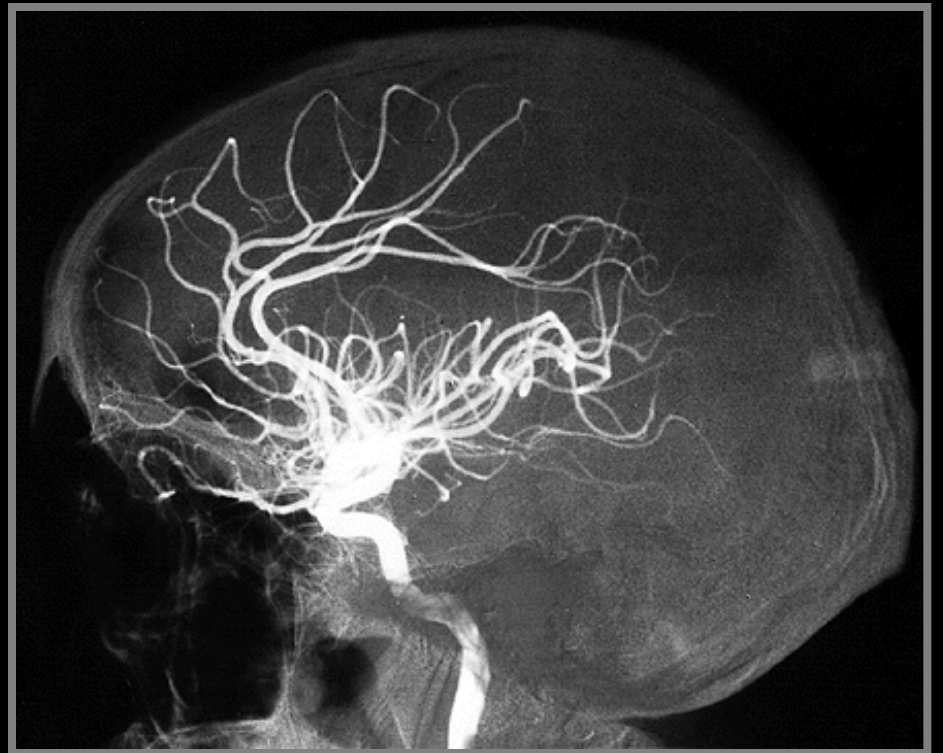
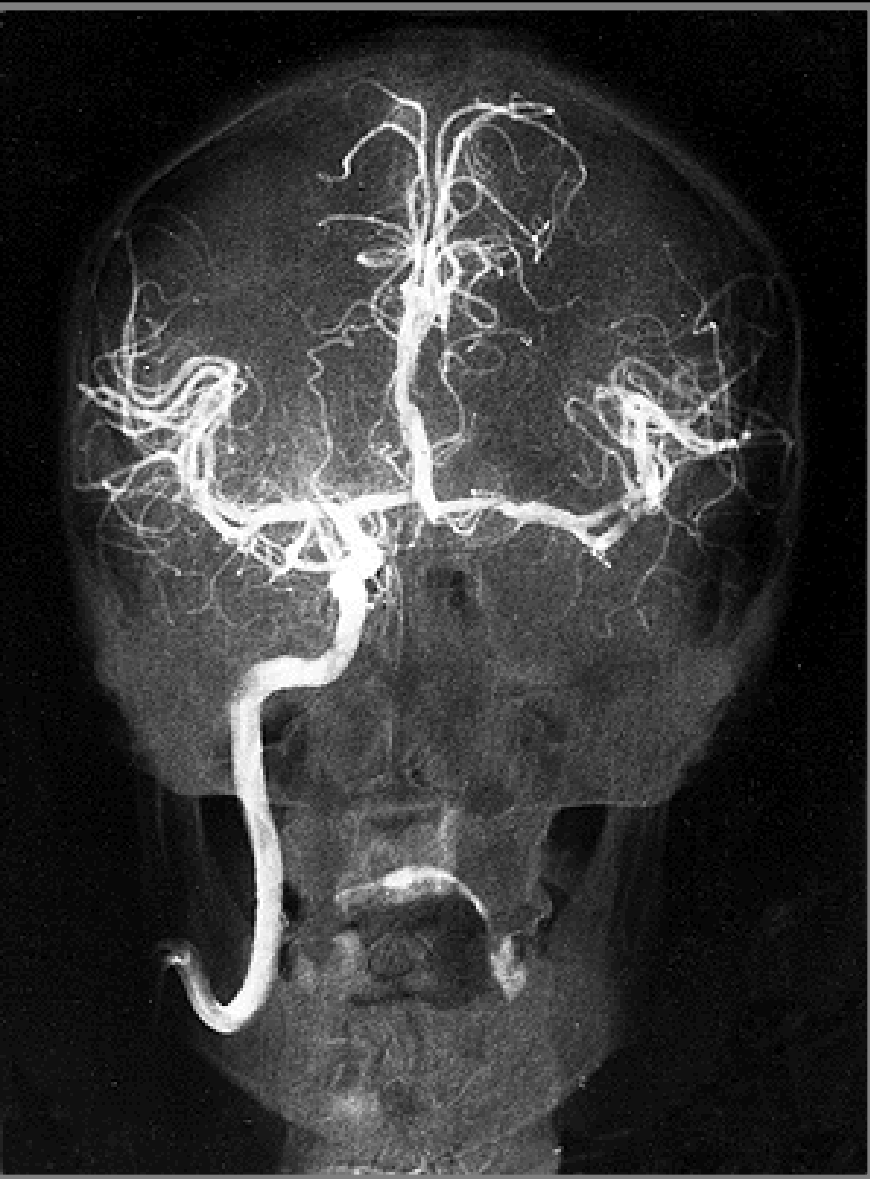
RIGHT CORONARY ARTERY – LEFT ANTERIOR OBLIQUE VIEW



AORTOGRAPHY



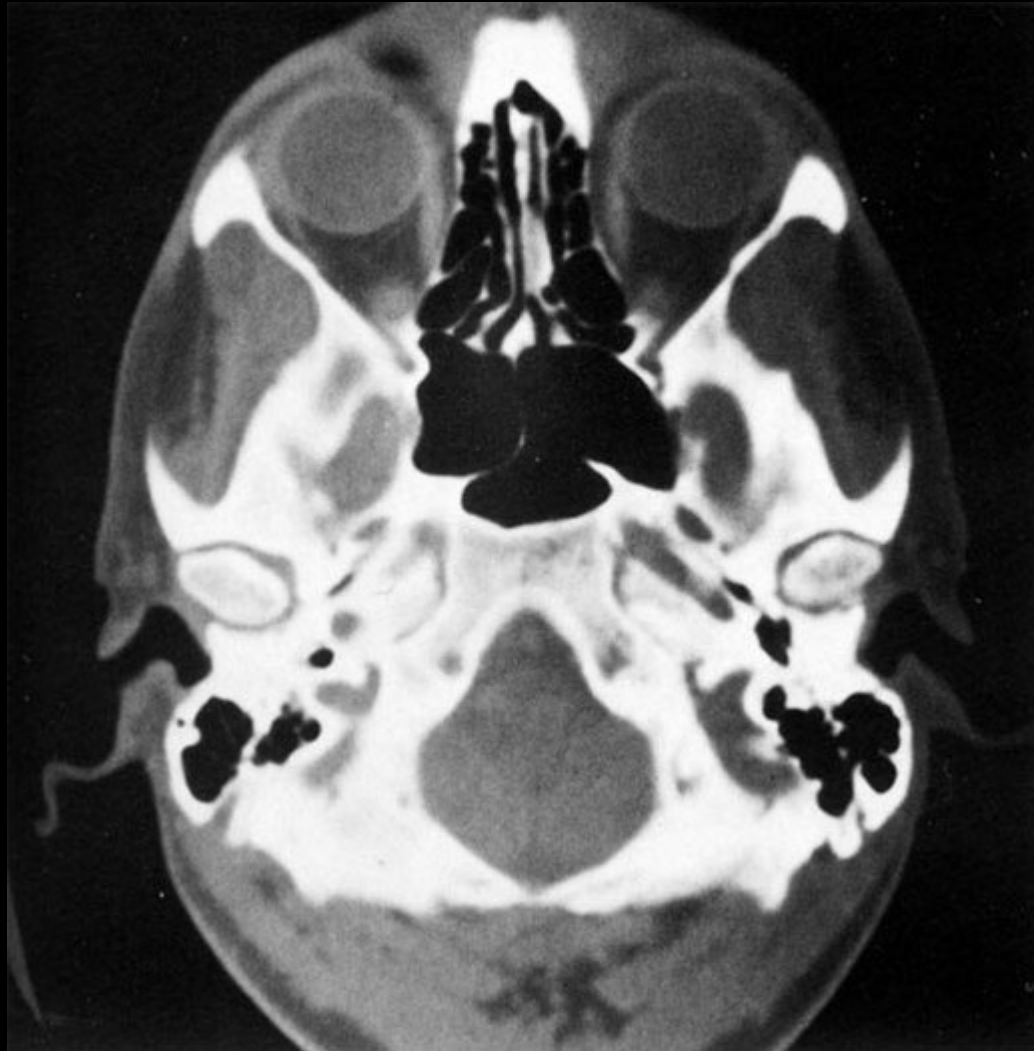
CAROTID ANGIOGRAPHY



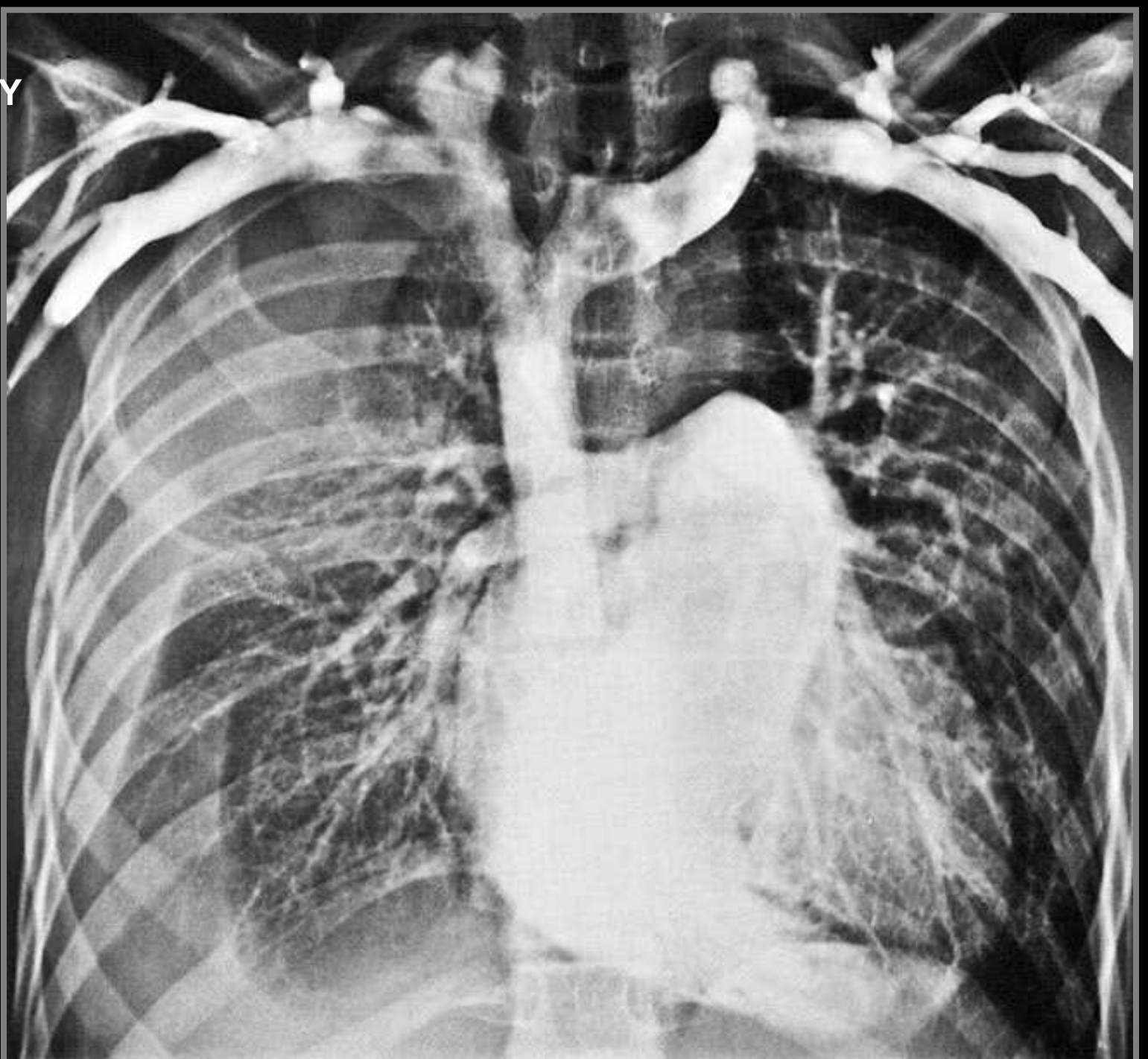
VERTEBRAL ANGIOGRAPHY



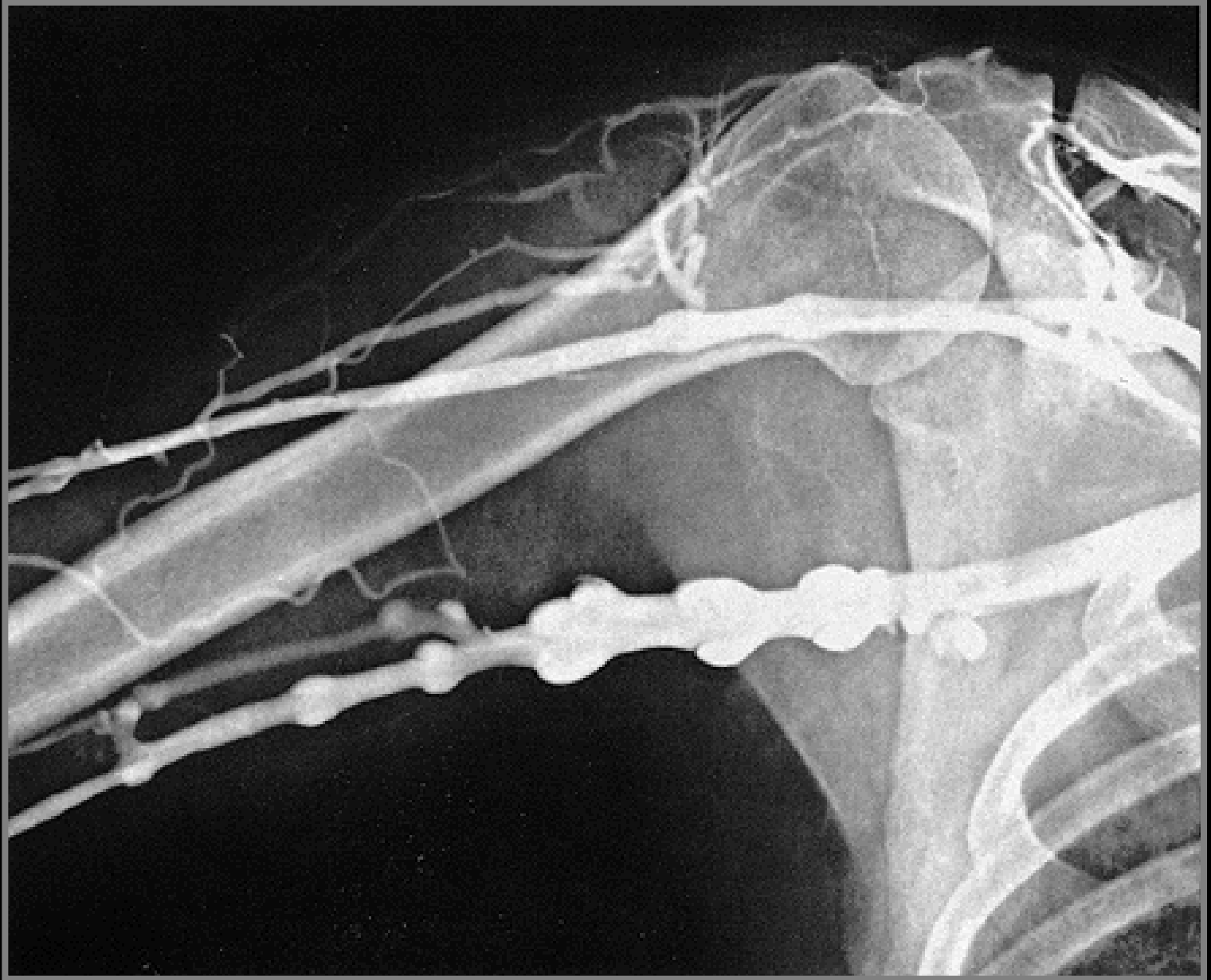
BASE OF SKULL – CT, AXIAL PLANE



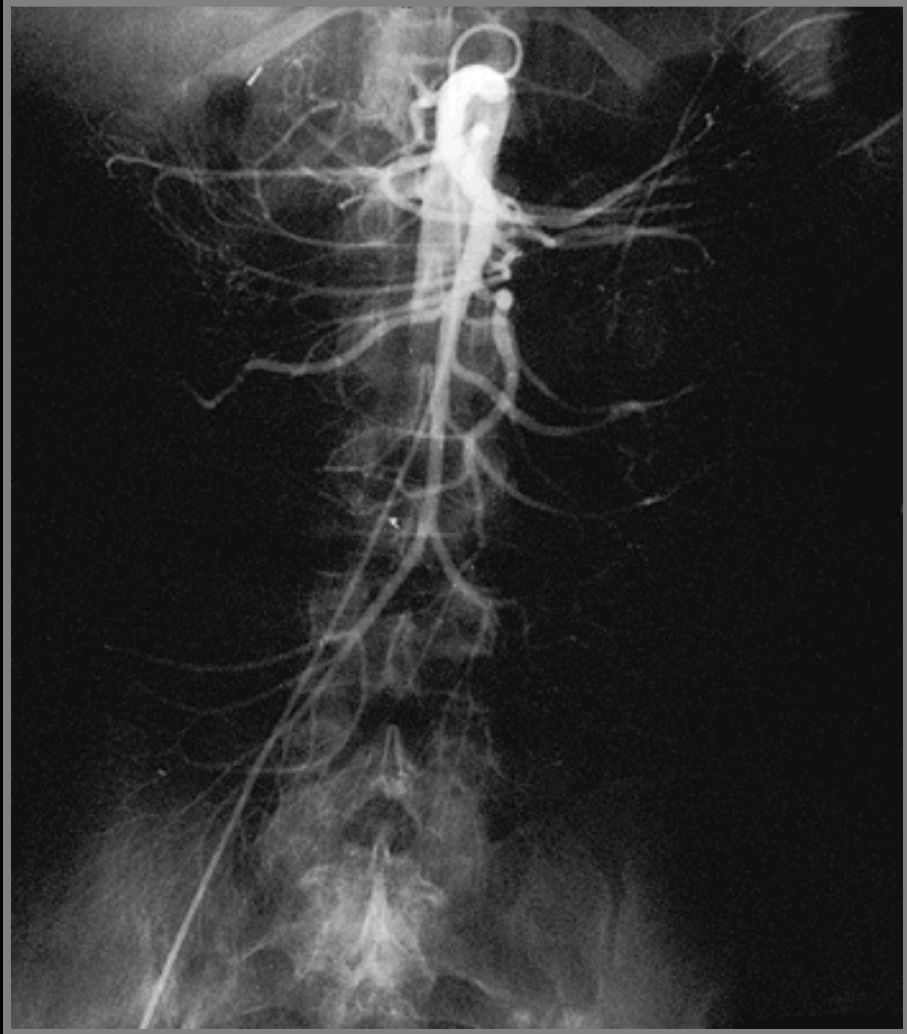
VENOGRAPHY



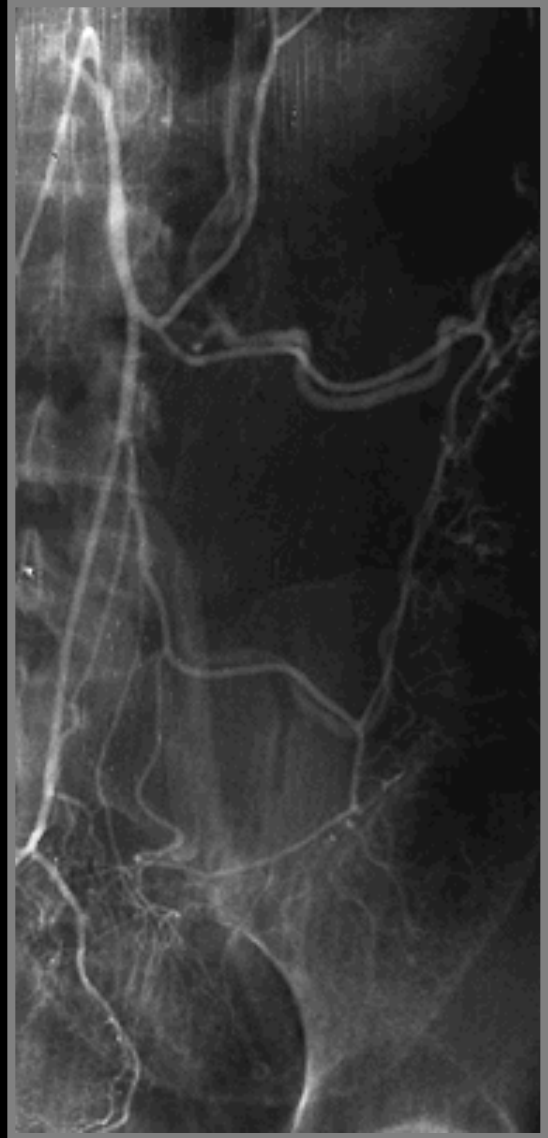
VENOGRAPHY



ANGIOGRAPHY

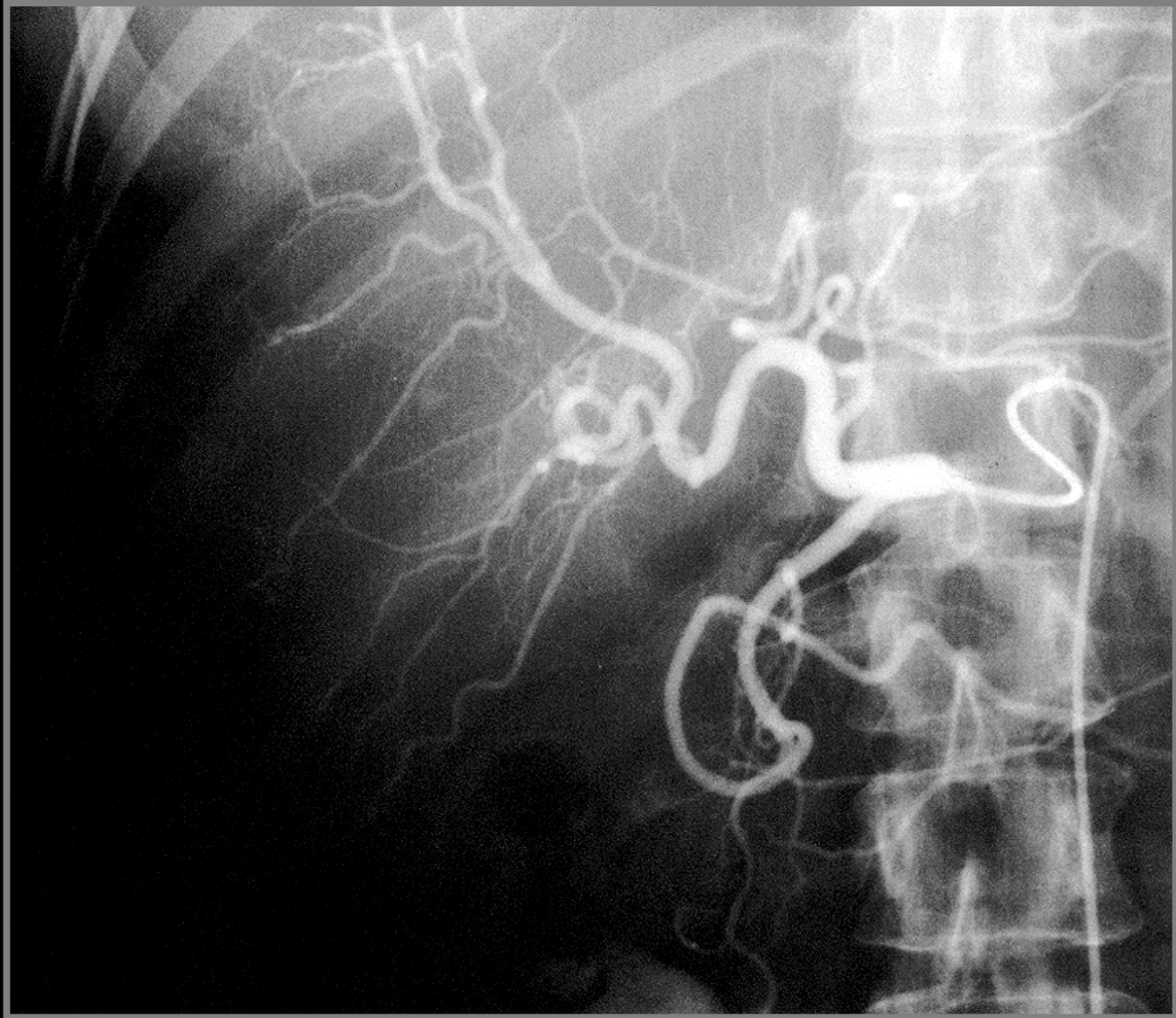


A. mesenterica superior



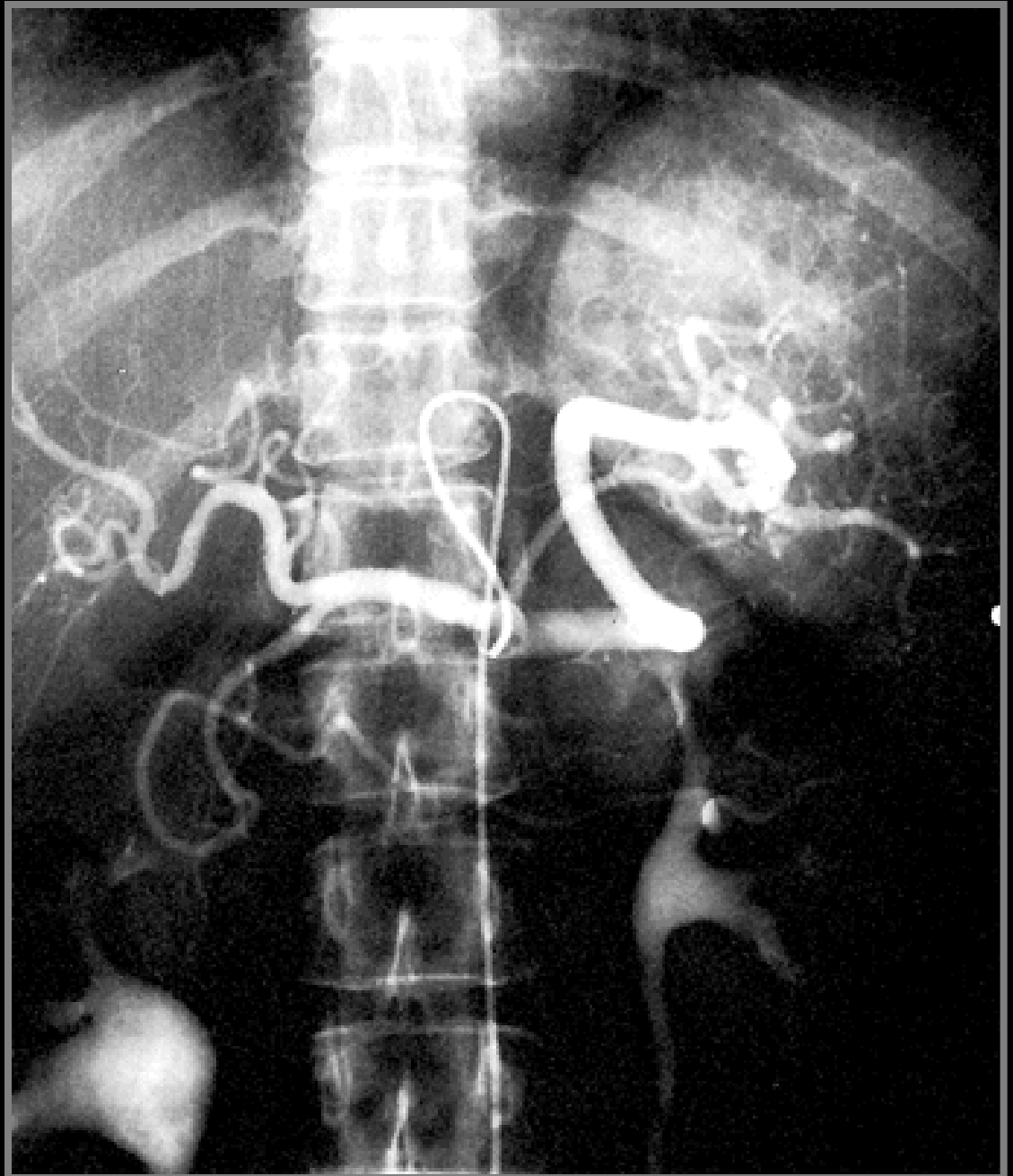
A. mesenterica inferior

ANGIOGRAPHY

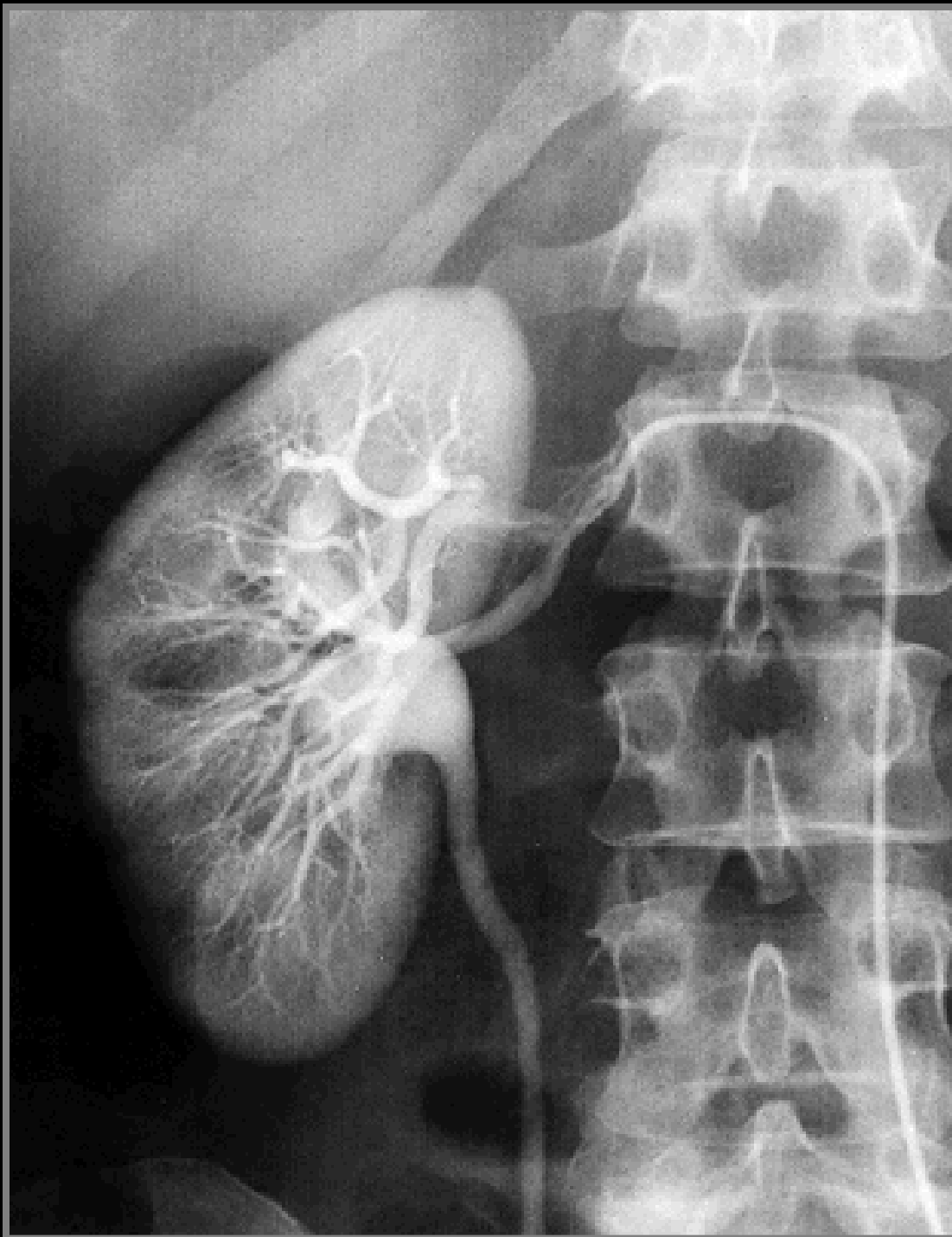


Common hepatic artery

TRUNCUS COELIACUS



A. RENALIS



AA. ILIACAE

