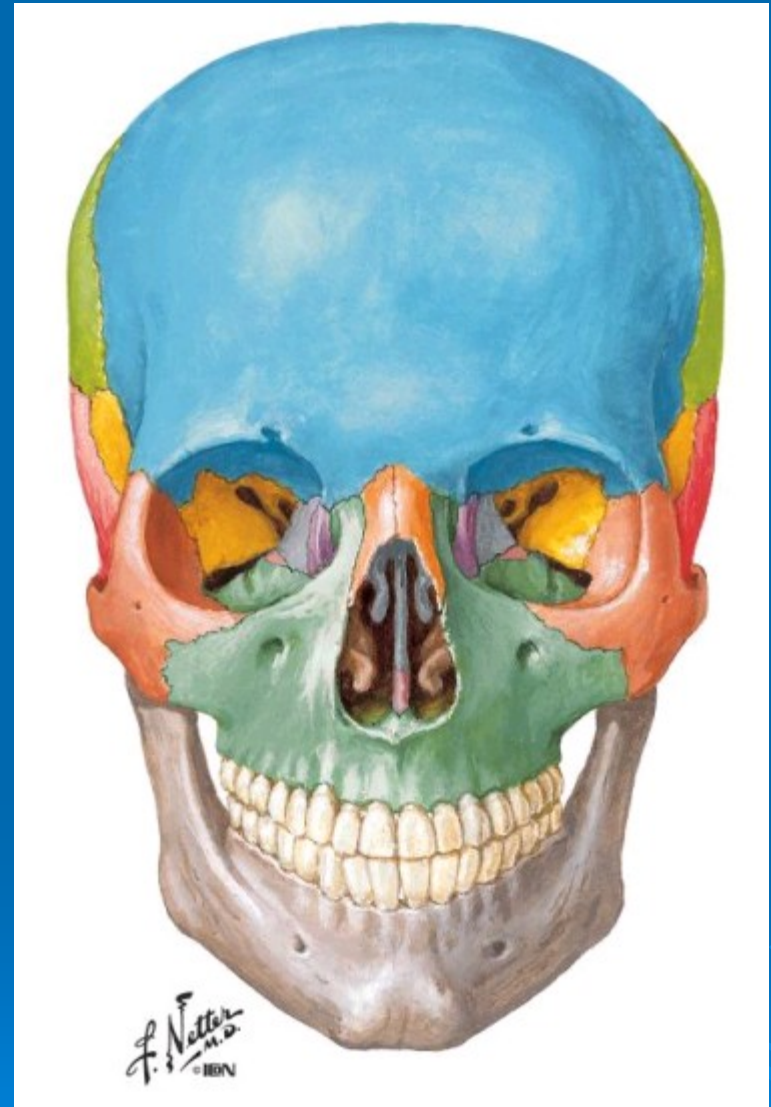


SPLANCHNOCRANIUM

Pages 199 - 213





Splanchnocranium = Viscerocranium = bone of the face

Maxilla





- **Corpus maxillae**
 - infraorbital canal et groove
 - infraorbital foramen
 - alveolar canals
 - fossa canina
 - hiatus of maxillary sinus
 - incisura nasalis
 - anterior nasal spine
 - infrazygomatic crest
 - tuber maxillae
 - alveolar foramens
 - posterior alveolar canals



- **Maxillary sinus**
 - semilunar hiatus
 - frontal recess
 - zygomatic recess
 - palatal recess
 - alveolar recess
- **Frontal process**
 - ant. lacrimal crest
 - ethmoidal crest
 - conchal crest
- **Zygomatic process**



- **Alveolar process**
 - juga alveolaria
 - dental alveoli
 - interalveolar septa
 - interradicular septa
- **Palatal process**
 - incisive foramen
 - palatal torus
 - palatal grooves

Palatine bone





- **Perpendicular plate**

- orbital process

- sphenoidal process

- sphenoidal notch

- sphenopalatine for.

- conchal crest

- ethmoidal crest

- **Horizontal plate**

- lesser palatine foramen

- greater palatine foramen

- pyramidal process

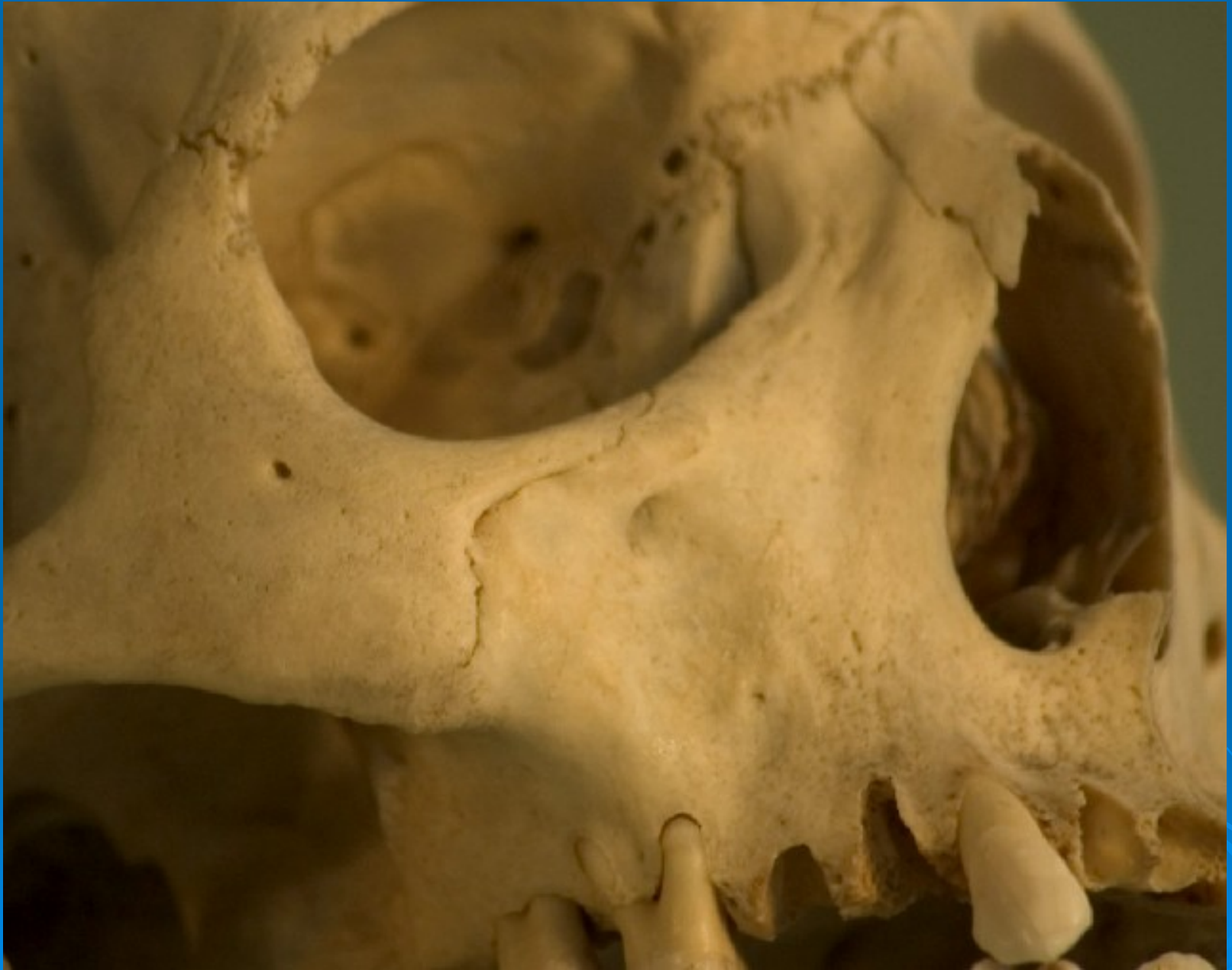
- posterior nasal spine

Zygomatic bone





- **Corpus**
 - facial surface
 - zygomaticofacial for.
 - orbital surface
 - zygomaticoorbital for.
 - temporal surface
 - zygomaticotemporal for.
- **Maxillary process**
- **Frontal process**
- **Temporal process**



Lacrimal bone

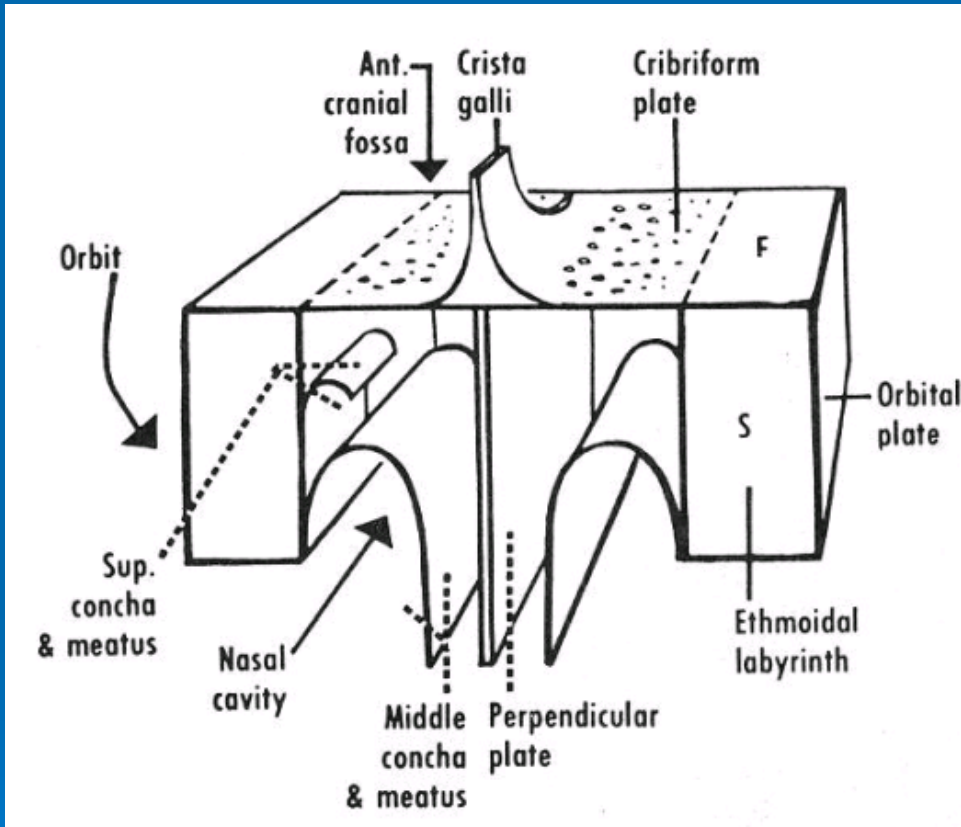




- **Orbital surface**
 - posterior lacrimal crest
 - lacrimal sulcus
- **Nasal surface**

Ethmoid bone





- **Perpendicular plate**

- crista galli

- foramen caecum

- nasal septum

- **Ethmoid labyrinth**

- anterior ethmoid sinus

- middle ethmoid sinus

- posterior ethmoid sinus

- ethmoid bulla

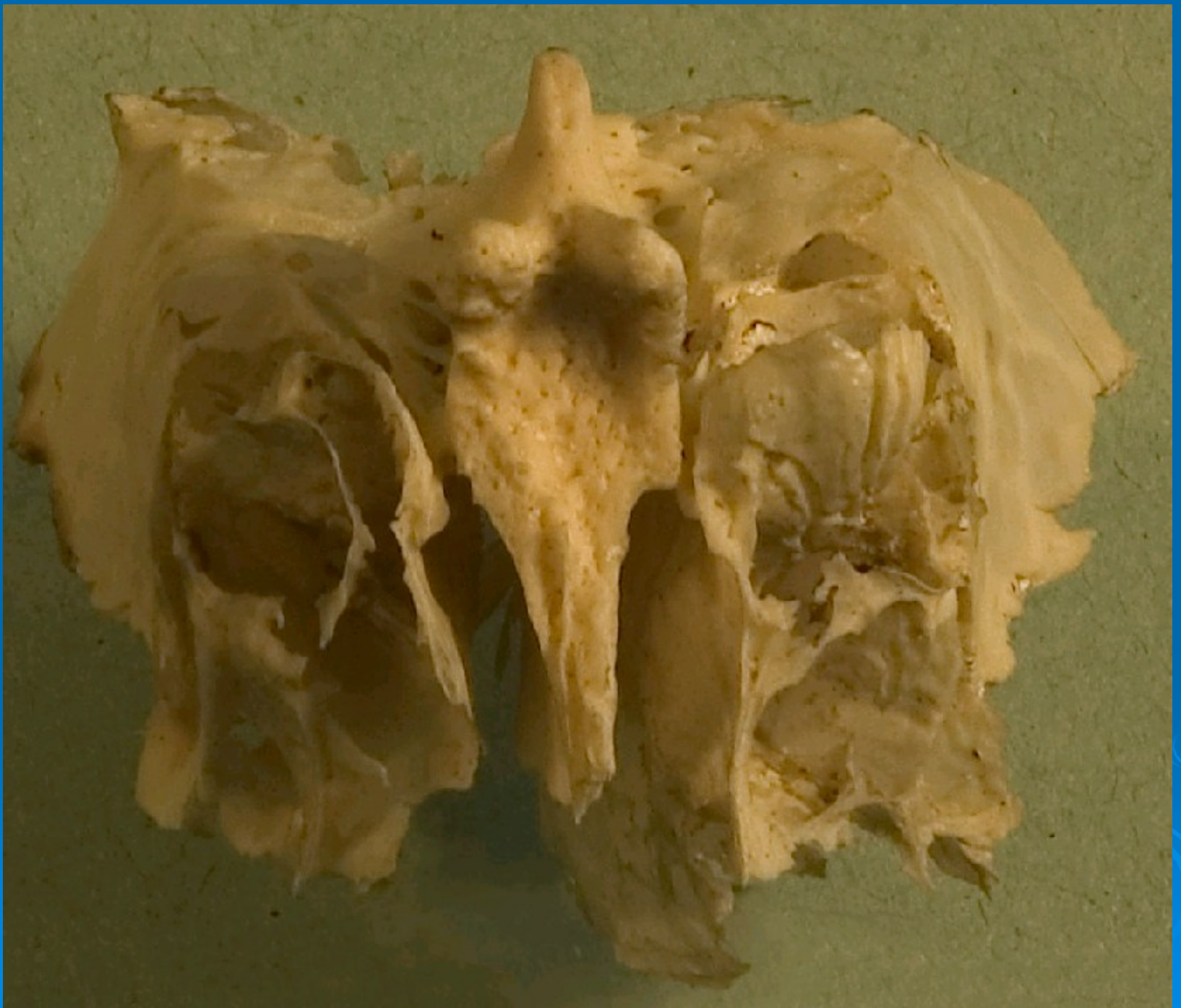
- superior concha

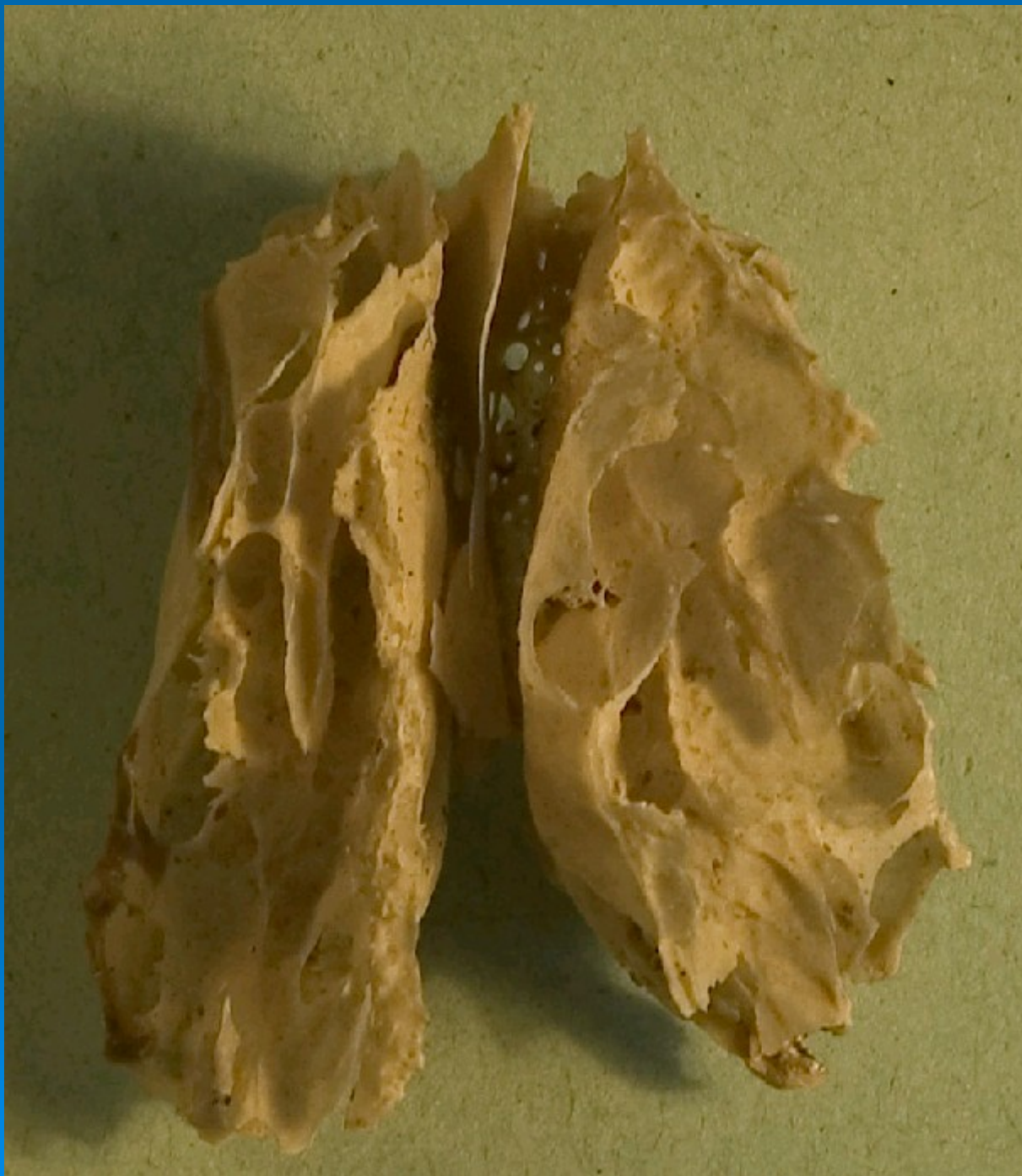
- middle concha

- uncinate process

- orbital plate

- **Cribriform plate**





Nasal bone





- **Facial surface**
 - foramen for emissary vein
- **Nasal surface**
 - ethmoidal sulcus
- **Superior border**
- **Inferior border**

Vomer

forms a major part of the bony nasal septum

- wings of vomer

Inferior nasal concha

helps to form the lateral wall of the nasal cavity and the medial wall of the maxillary sinus





- **Lateral surface**
maxillary process
- **Medial surface**
ethmoidal process
lacrimal process

Mandible



- **Corpus mandibulae**

symphysis menti

external & internal surf.

alveolar process

mandibular angle

mental tubercle

mental protuberance

mental foramen





- **Mandibular ramus**

- coronoid process

- temporal crest

- condylar process

- mandibular head

- mandibular neck

- pterygoid fossa

- masseteric tuberosity

- external oblique line

- retromolar fossa

- **Internal aspect**



digastric fossa

mental spine

mylohyoid ridge

submandibular fossa

sublingual fossa

mandibular foramen

mandibular lingula

mandibular canal

mylohyoid sulcus

internal oblique line

pterygoid tuberosity

coronoid notch