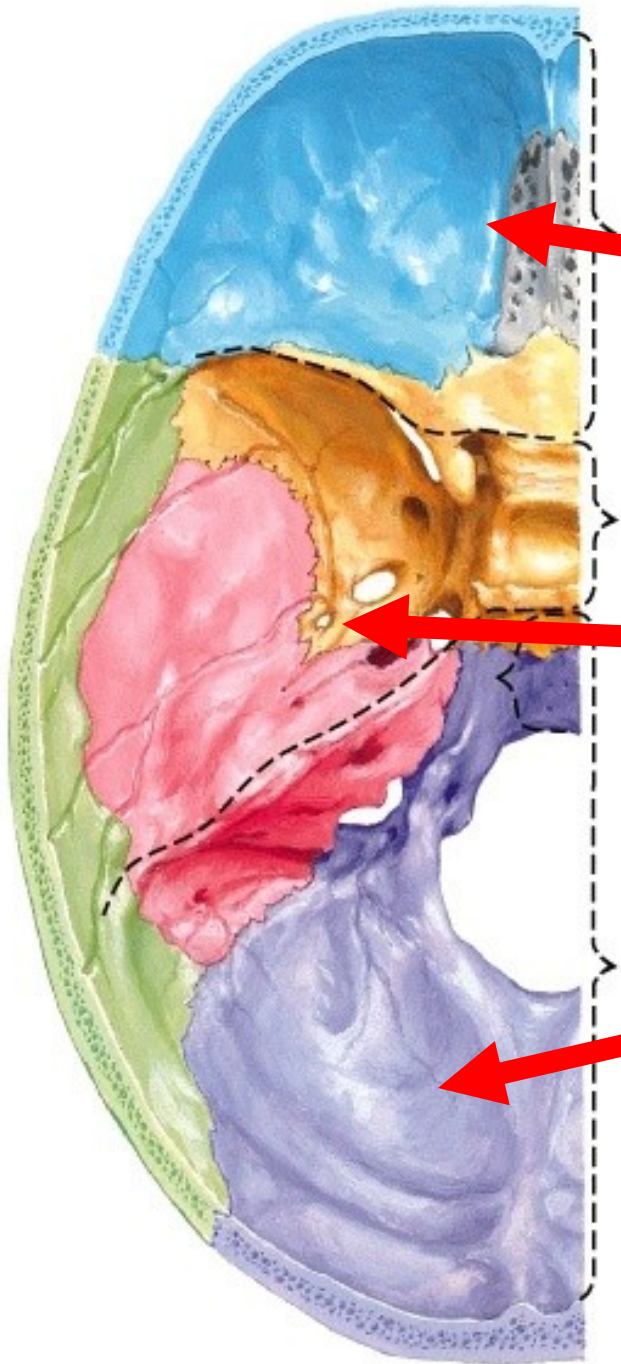


# Cranical Fossa



– Anterior

– Frontal lobes of cerebrum

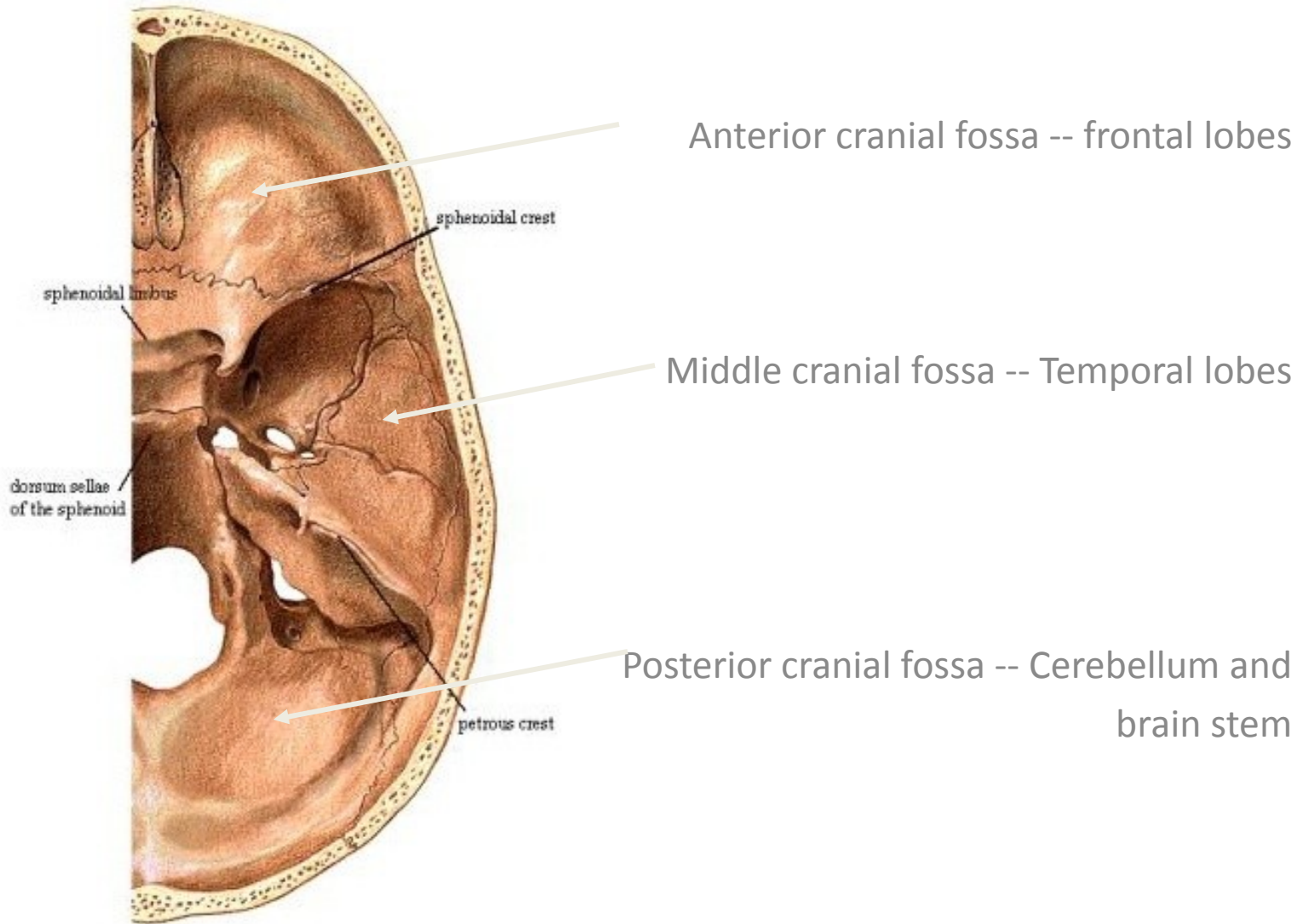
• Middle

– Temporal lobes of cerebrum

Posterior

– Cerebellum and Brainstem

# Cranial Fossa

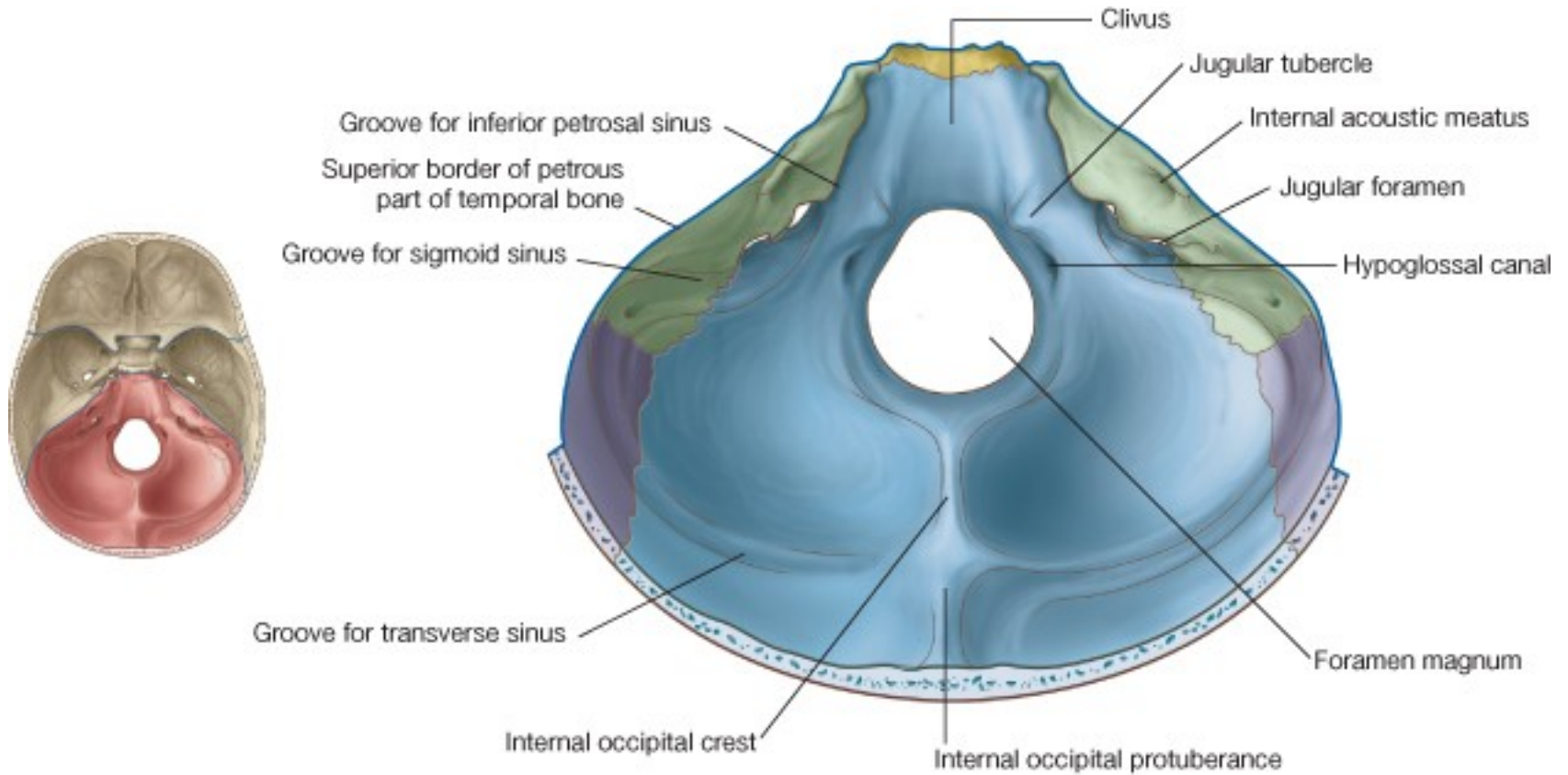


## Posterior Cranial Fossa

Occipital bone

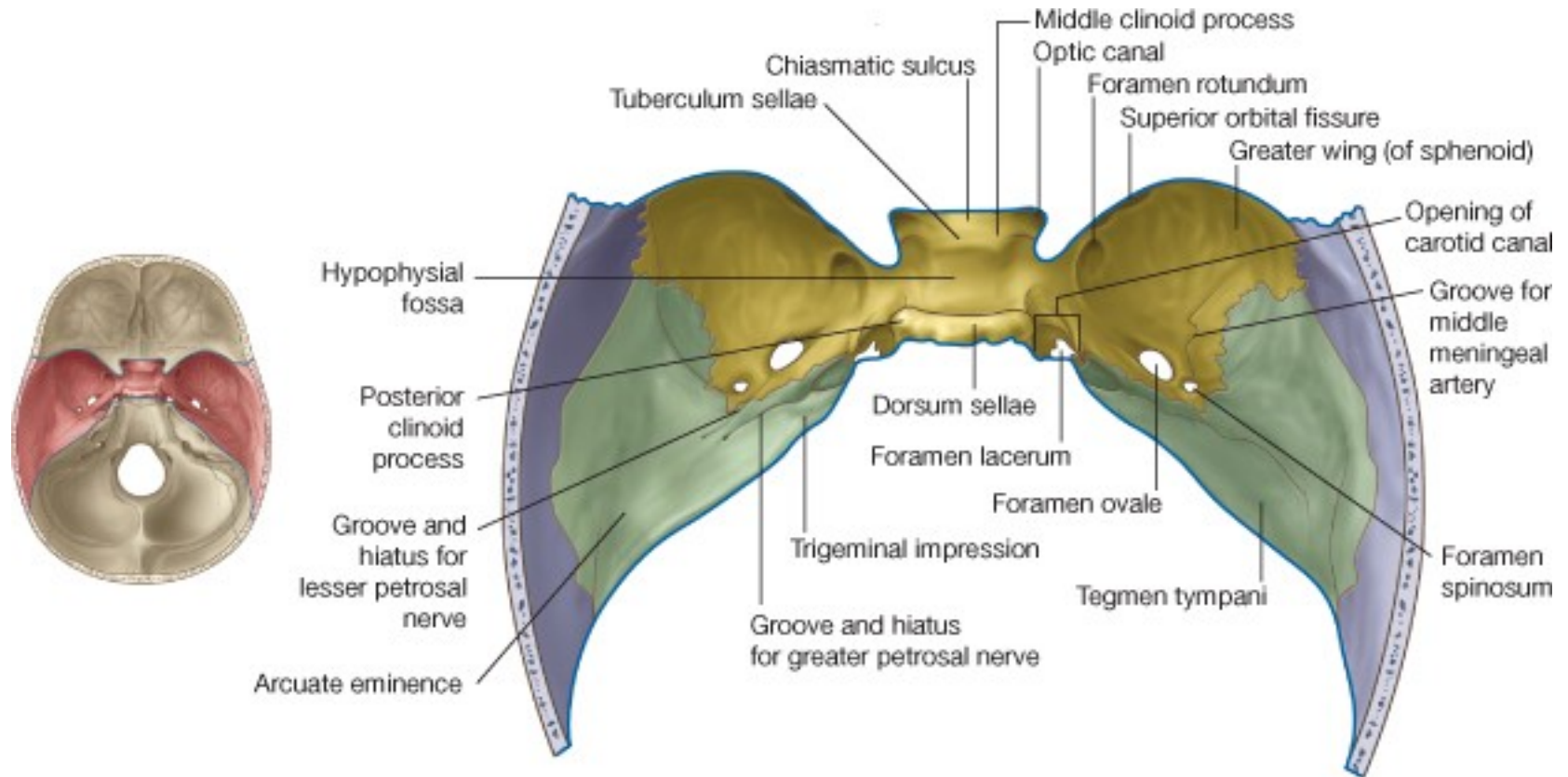
Petrous part of temporal bone

Parietal bone



## Middle Cranial Fossa

Greater wing of sphenoid bone  
Petrous and squamous part of temporal bone  
Parietal Bone



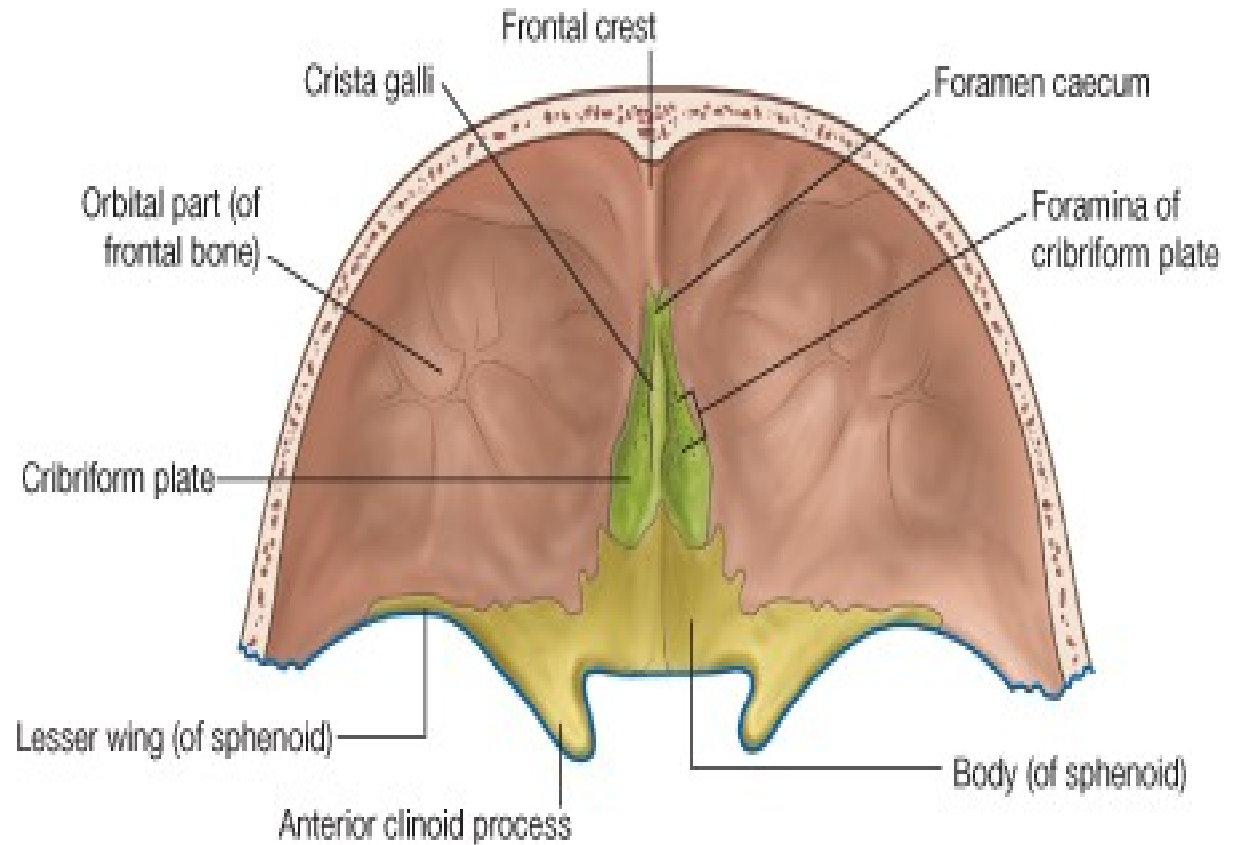
## Anterior Cranial Fossa

Lesser wing of sphenoid bone

Orbital plates of frontal bone

Cribriform plates of ethmoid bone

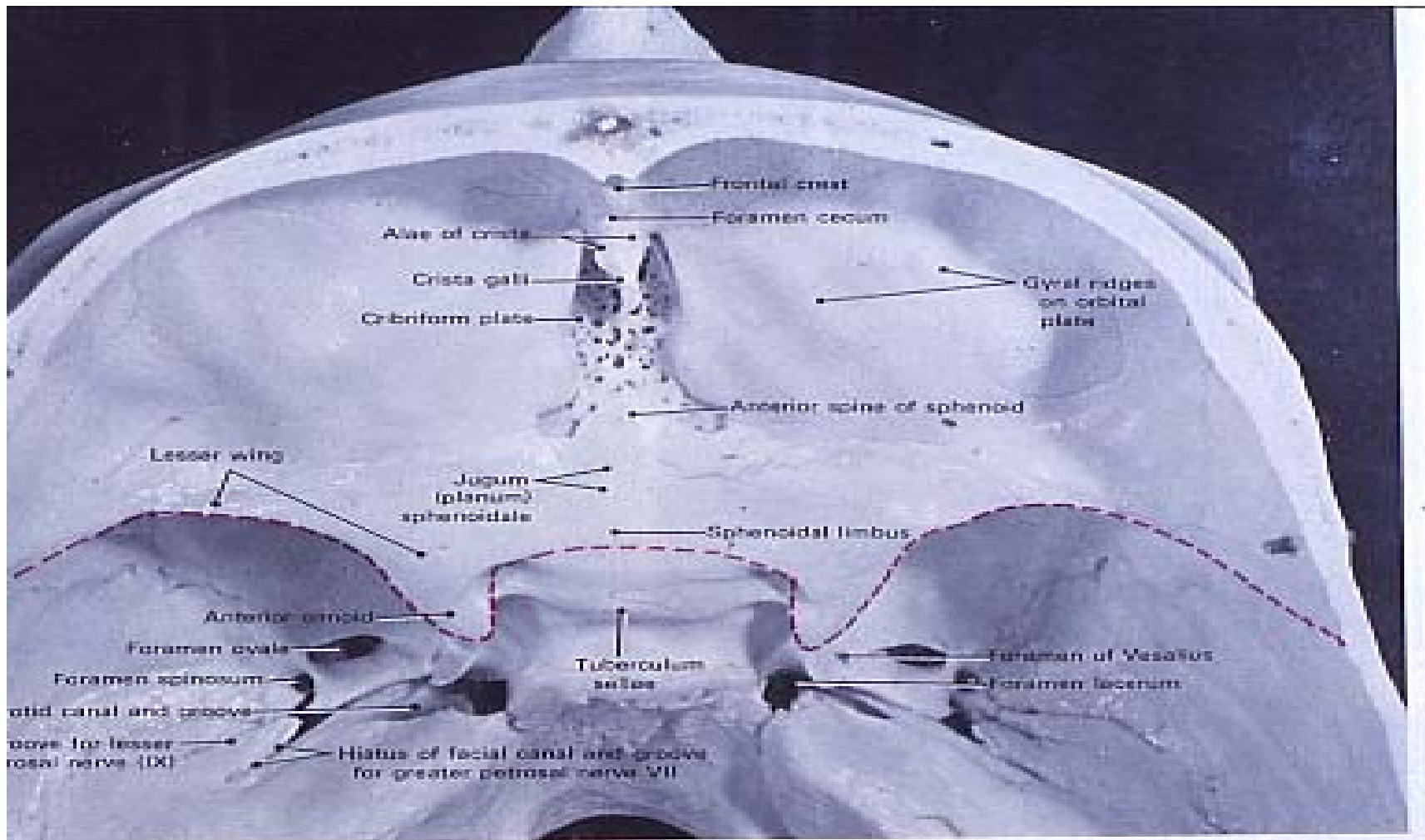
Crista galli



# Cranial Fossae

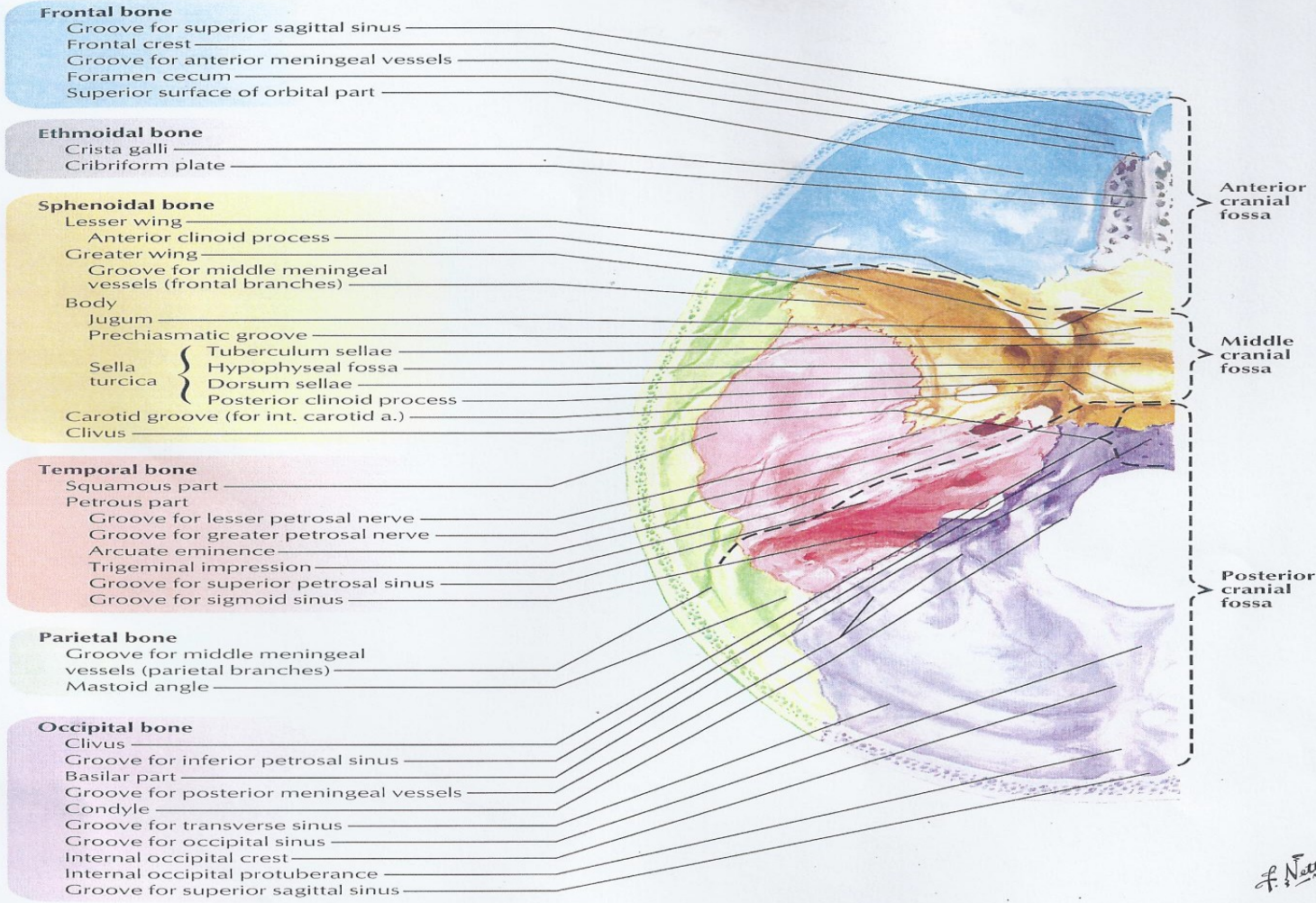
## Crista Galli

## Cribriform Plates



1-29. Details of the anterior and middle cranial fossae. A. Division of anterior and middle cranial fossae.

# Cranial Base: Superior View



*F. Netter M.D.*