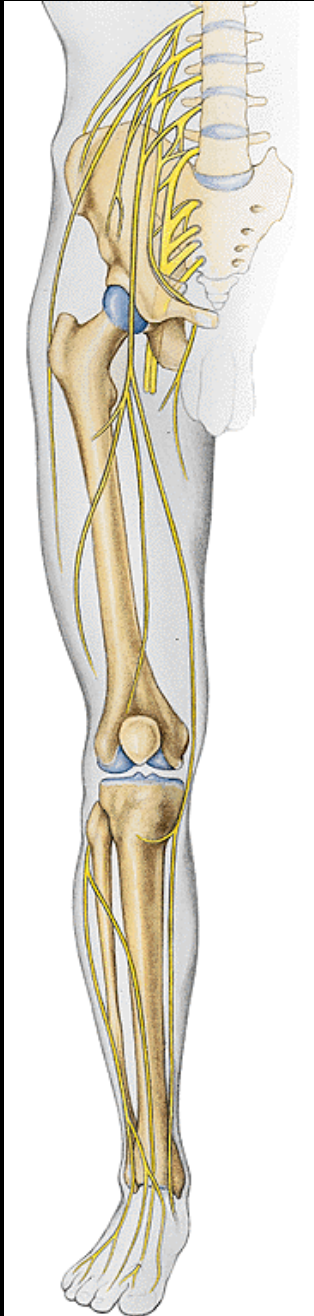


Inervace dolní končetiny

**Plexus lumbalis
sacralis**



Plexus lumbalis

Břicho

Stehno: lat., ant., med.

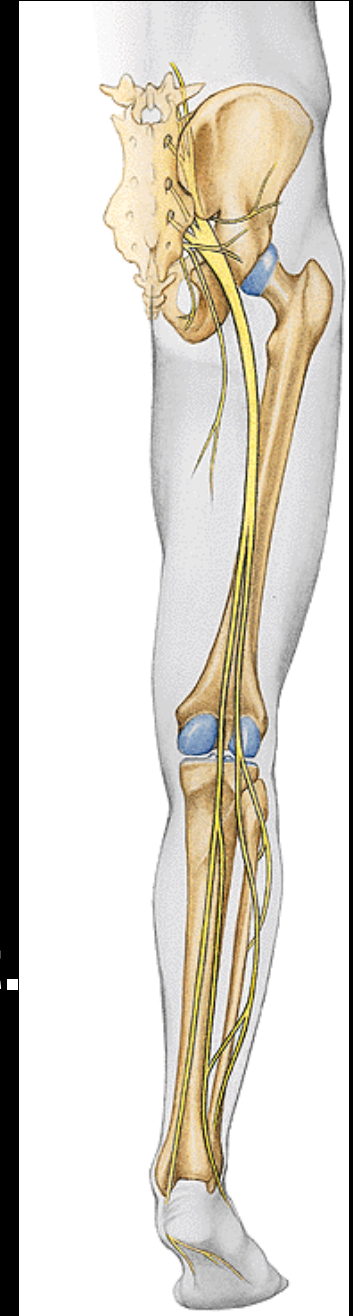
Bérec: med.

Plexus sacralis

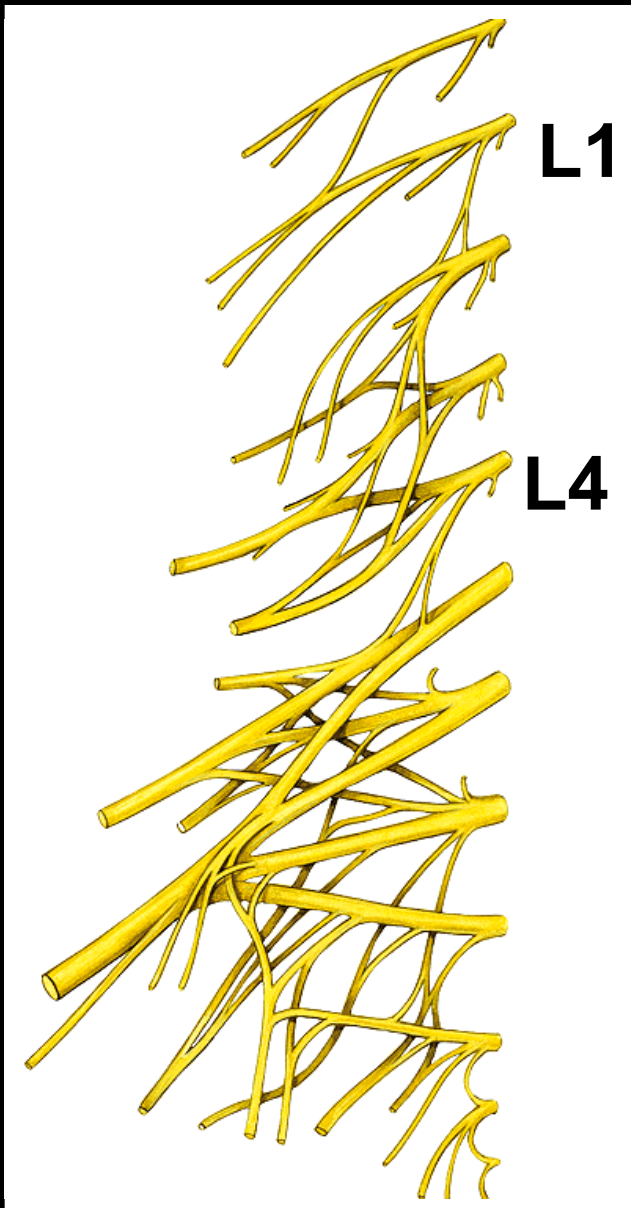
Stehno: post.

Bérec: ant., lat., post.

Noha



Plexus lumbalis



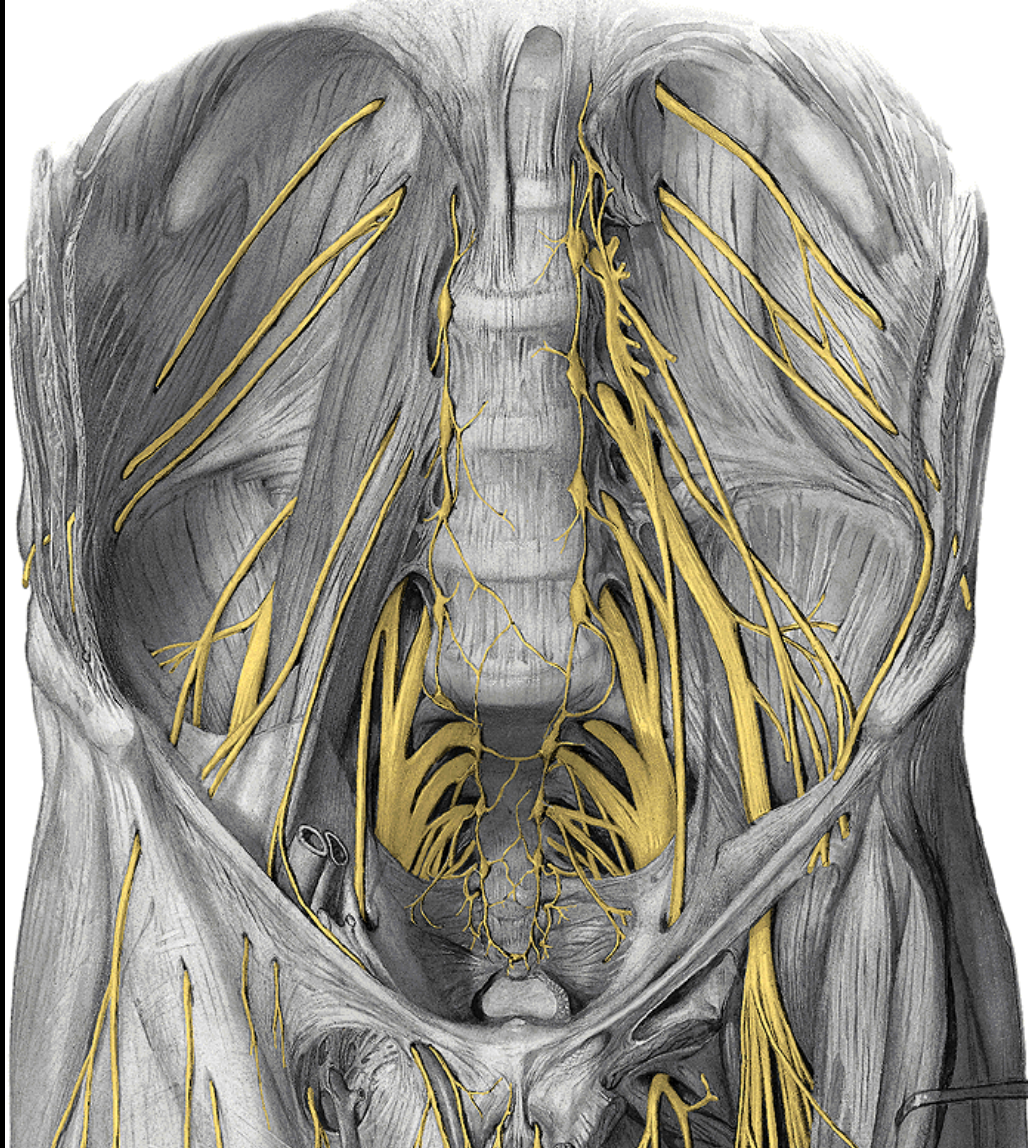
Míšní nervy

L1 – L4

Přední větve

**Inervace: část stěny břišní
část DK**

Aferentní
Motorická

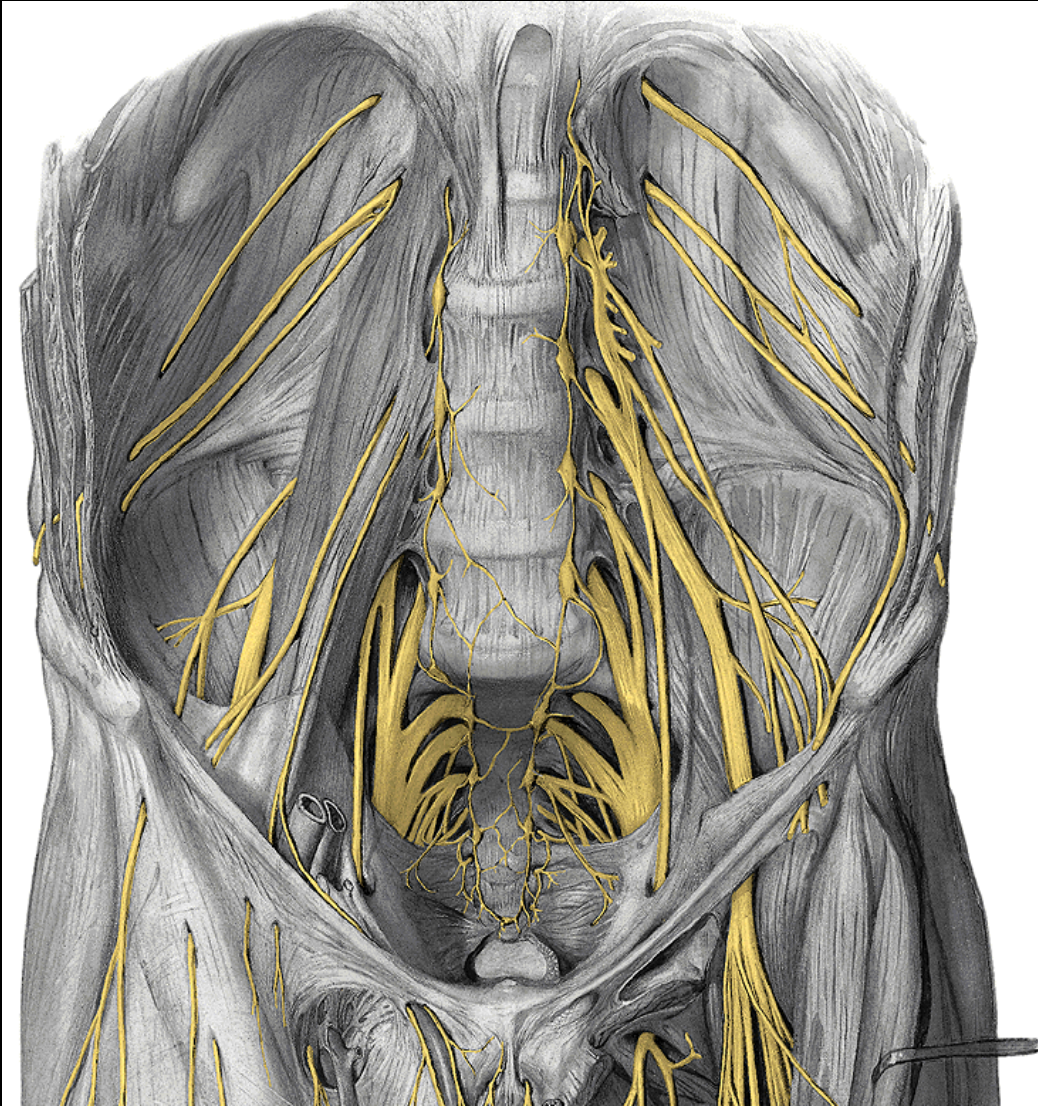


Rr. musculares
N. iliohypogastricus
N. ilioinguinalis
N. cut. femoris lat.
N. femoralis

M. psoas major

N. genitofemoralis
N. obturatorius

N. iliohypogastricus



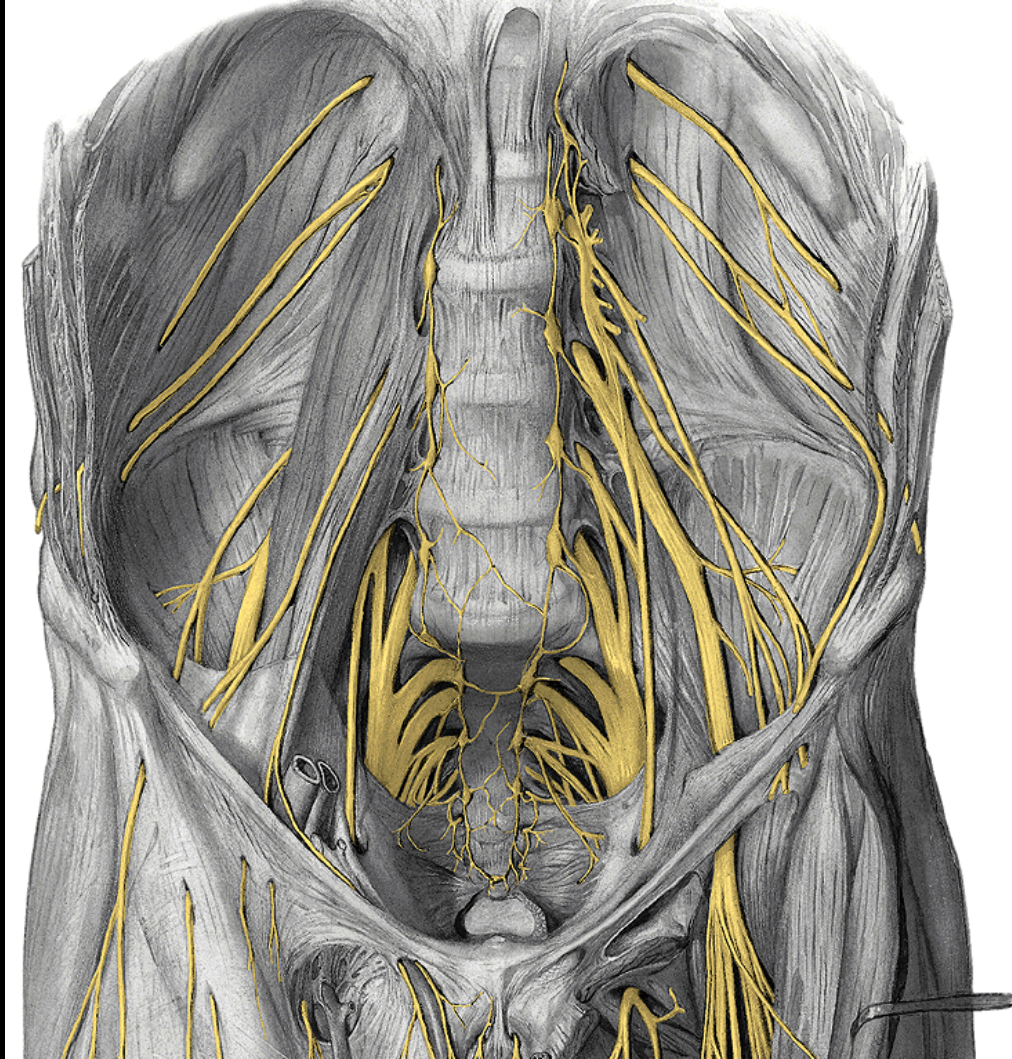
Mezi m. transversus
a m. obliquus int.

Rr. musc:

m. obliquus int.
m. transversus

Rr. cutanei

N. ilioinguinalis



Mezi m. transversus
a m. obliquus int.

Rr. musc:

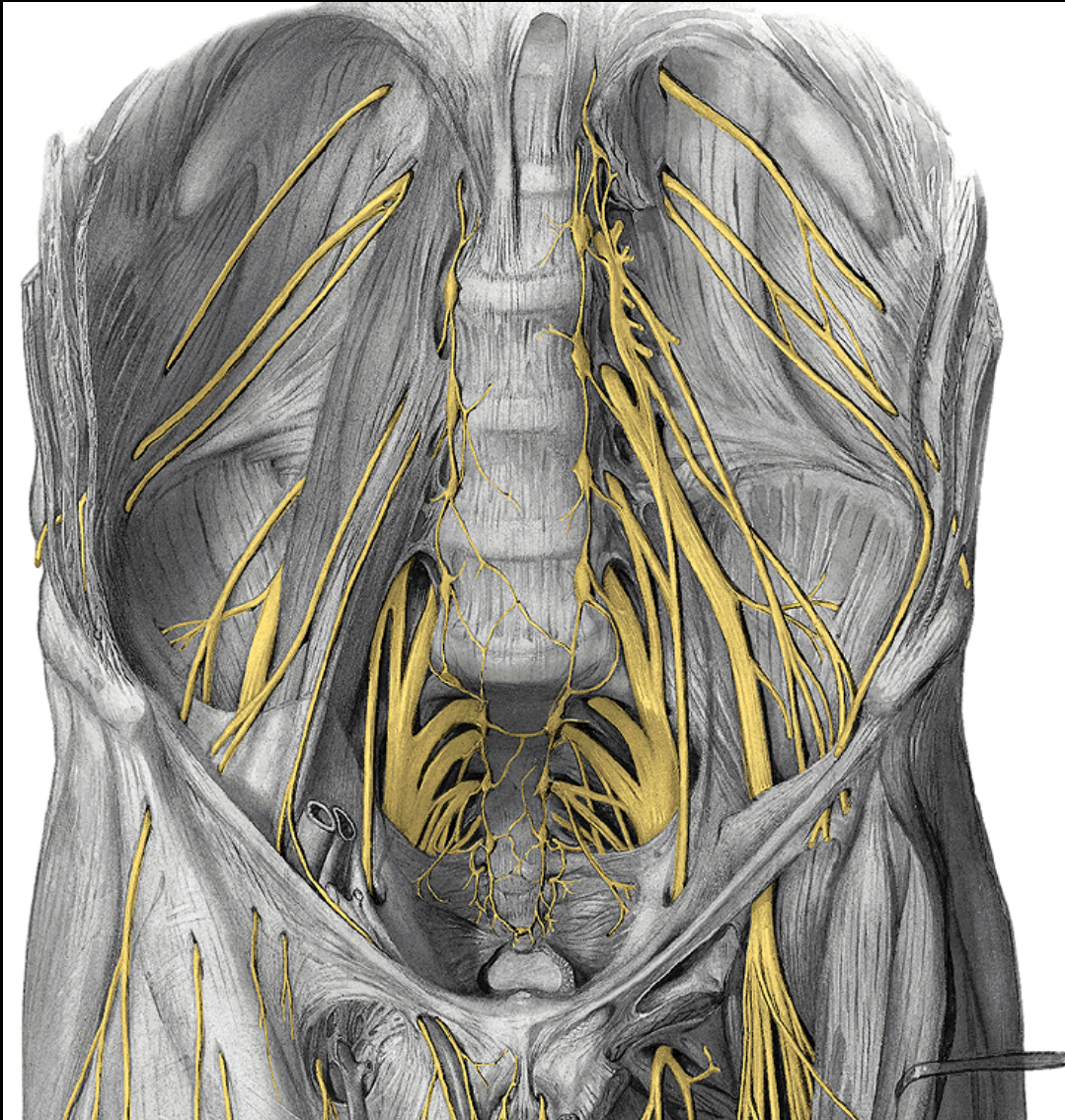
m. obliquus int.
m. transversus

Rr. cutanei

Přes inguinální kanál

Rr. scrot. / lab. ant.

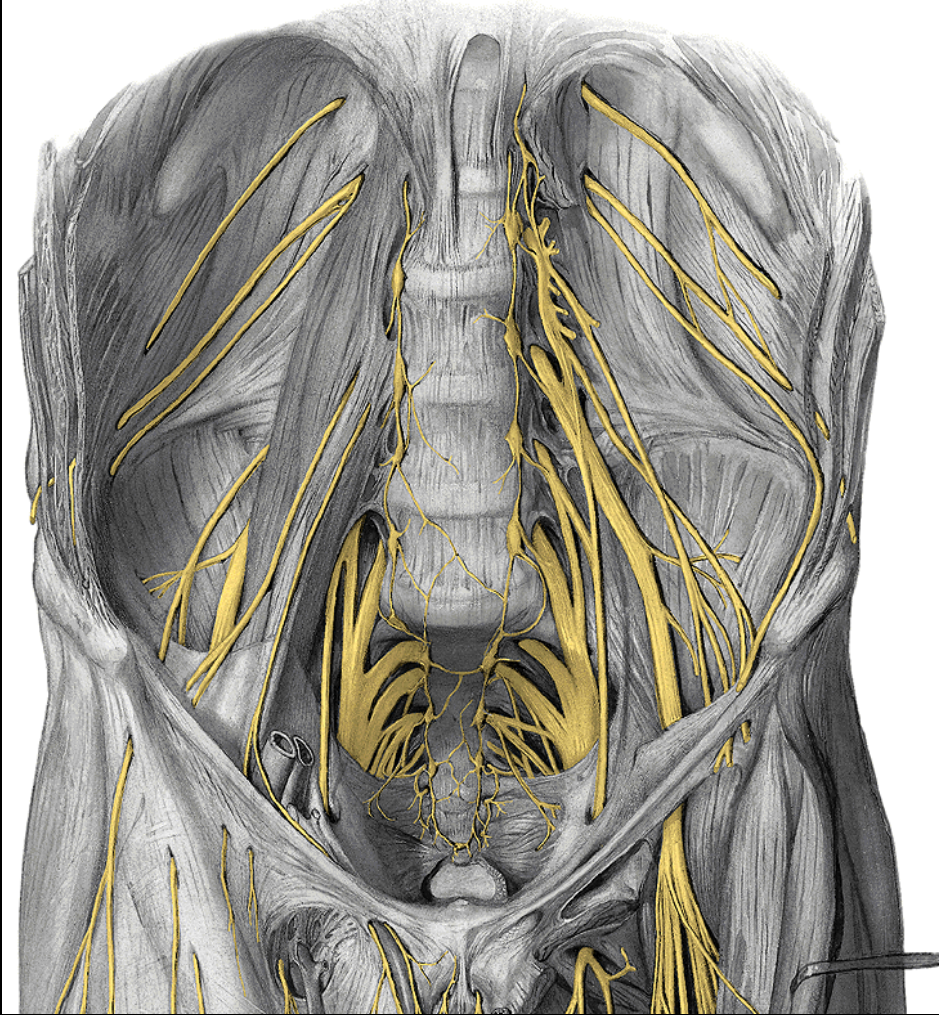
N. cut. femoris lat.



Pod lig. inguinale

Rr. cutanei ant.

N. femoralis



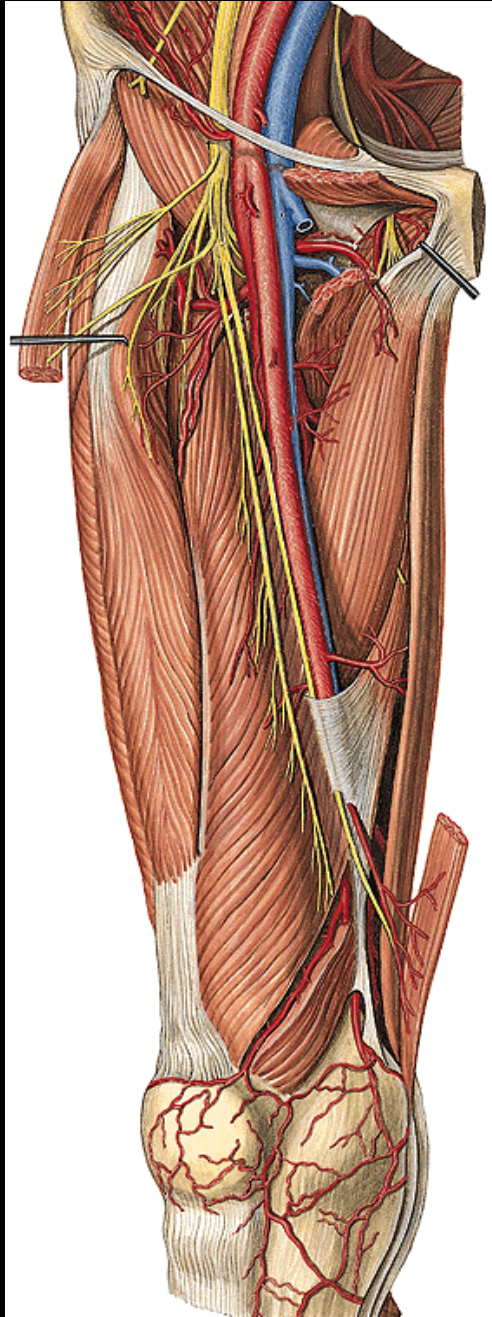
Do fossa iliopectinea

Přes lacuna muscul.

> **na stehno**

Rr. musc.

Rr. cutanei ant.

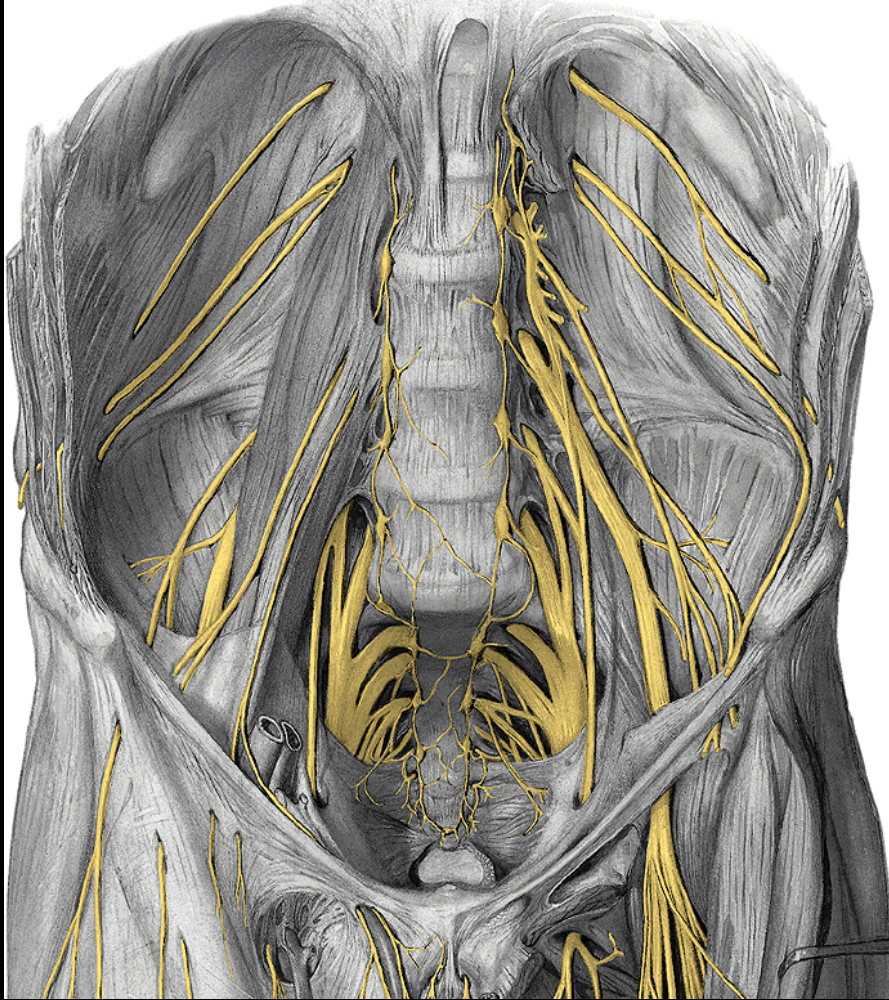


N. saphenus

Rr. cut. cruris med.



N. genitofemoralis



Přes m. psoas major

R. genitalis

Přes canalis inguin.

R. muscul:

m. cremaster

Rr. cutanei

scrotum a med.
stehno

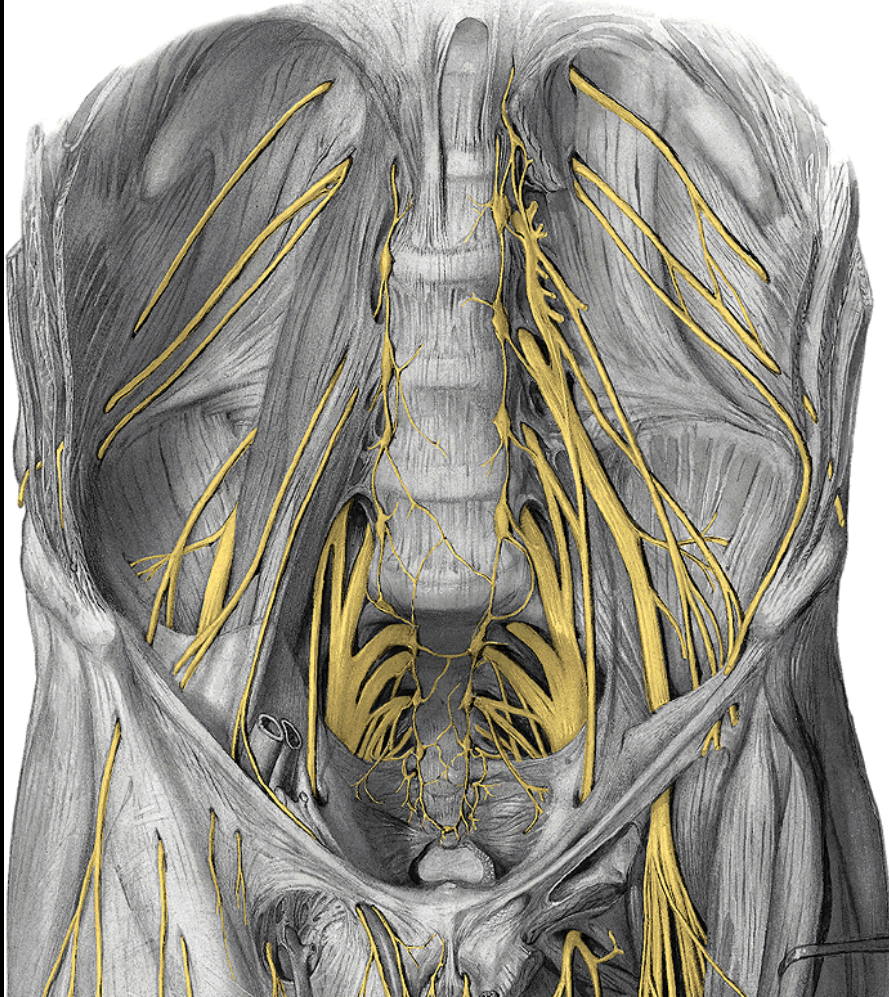
R. femoralis

Přes lacuna vasorum

Rr. cutanei

(Δ femorale)

N. obturatorius



Přes can. obturatorius

R. anterior

Rr. musc:

adduktory stehna

R. cutaneus

R. posterior

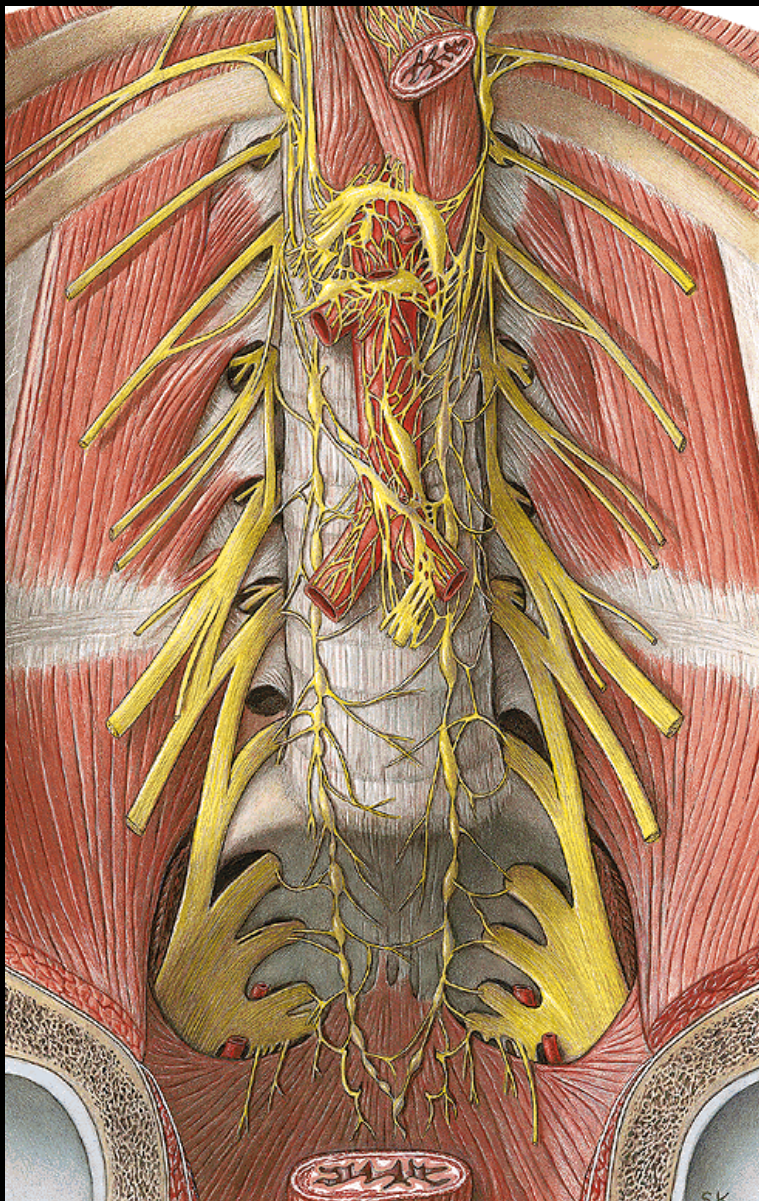
R. musc:

m. add. magnus

Rr. articulares

Plexus sacralis

Plexus sacralis



Mišní nervy

S1 – S5, Co

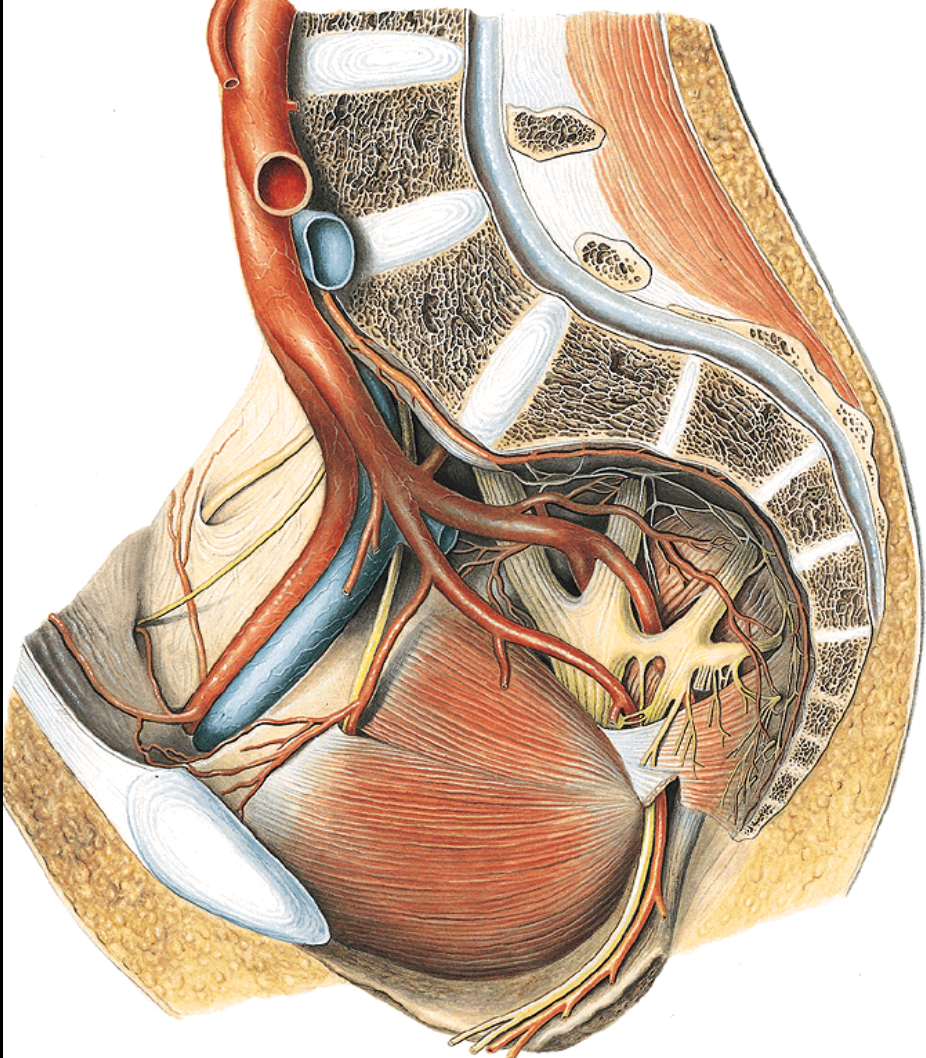
Přední větve

Inervace: část DK

Aferentní

Motorická

N. pudendus

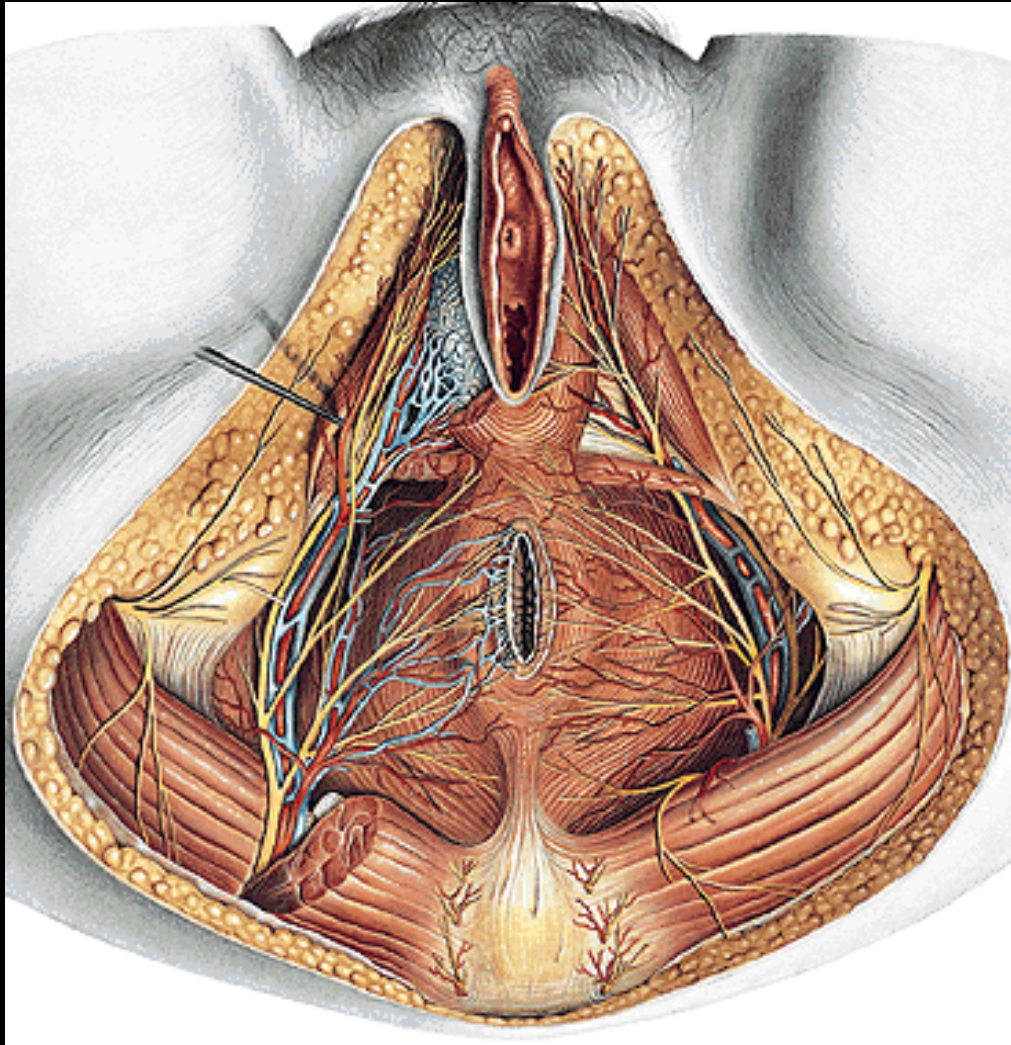


Přes for. infrapiriforme:

**- kolem spina ischiad.
do for. ischiad. minus**

> fossa ischiorectalis

> k symfýze



Fossa ischioirectalis

Smíšené:

Nn. rectales inf.

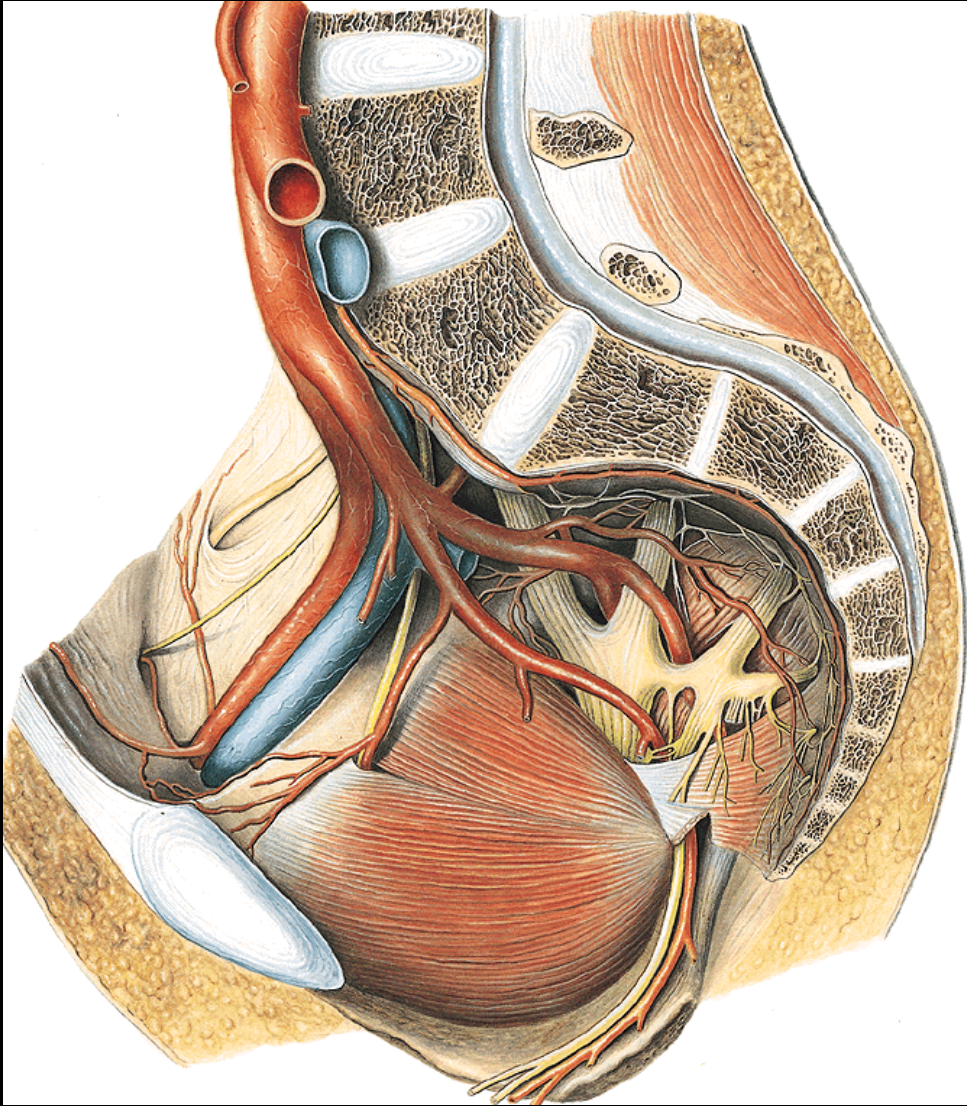
m. sphinct. ani ext.
kůže

Nn. perineales

svaly hráze a pohl. org.
rr. scrot. / labiales
post. pro kůži

N. dors penis /clitor

N. coccygeus



Na m. coccygeus

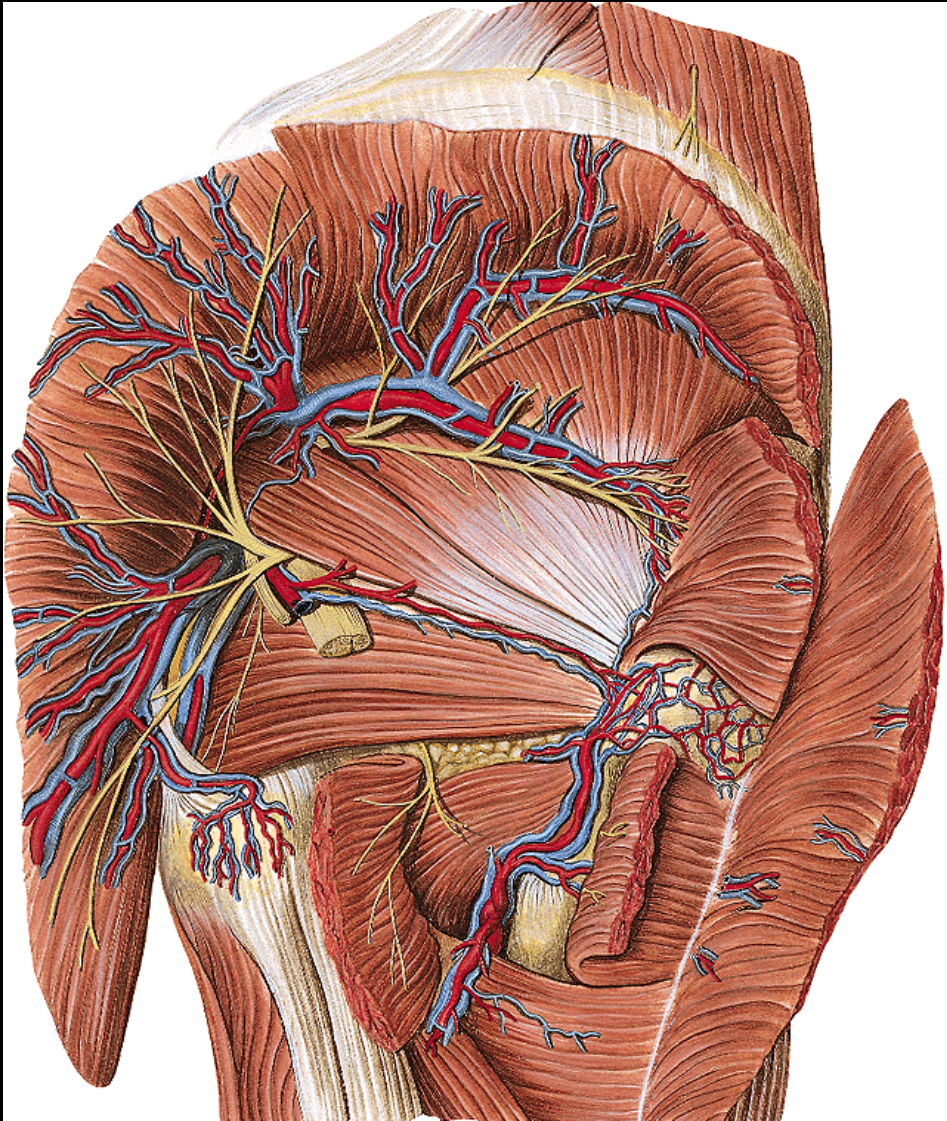
Rr. musculi:

m. levator ani
m. coccygeus

Rr. cutanei:

nn. anococcygei

N. gluteus



Superior

přes for. suprapirif.
mezi mm. glutei

Rr. muscul:

m. gluteus med., min.,
m. tensor fasc latae)

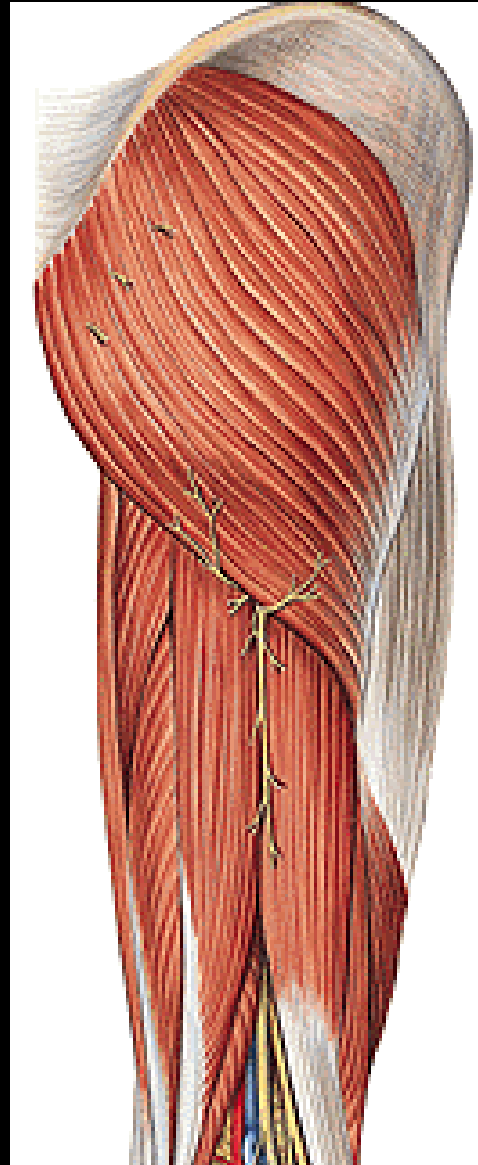
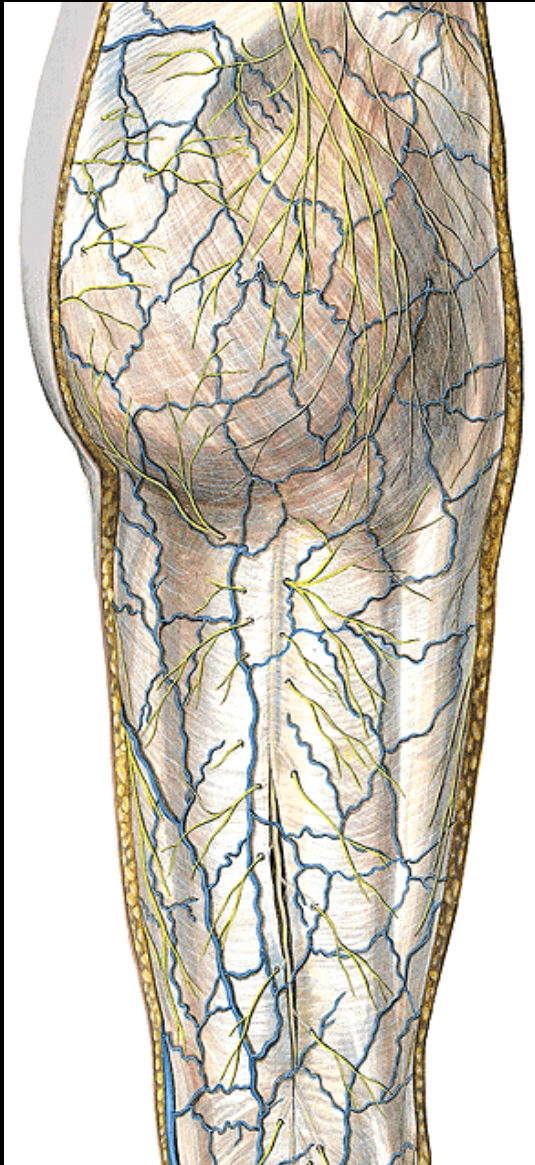
Inferior

přes for. infrapirif.

Rr. muscul:

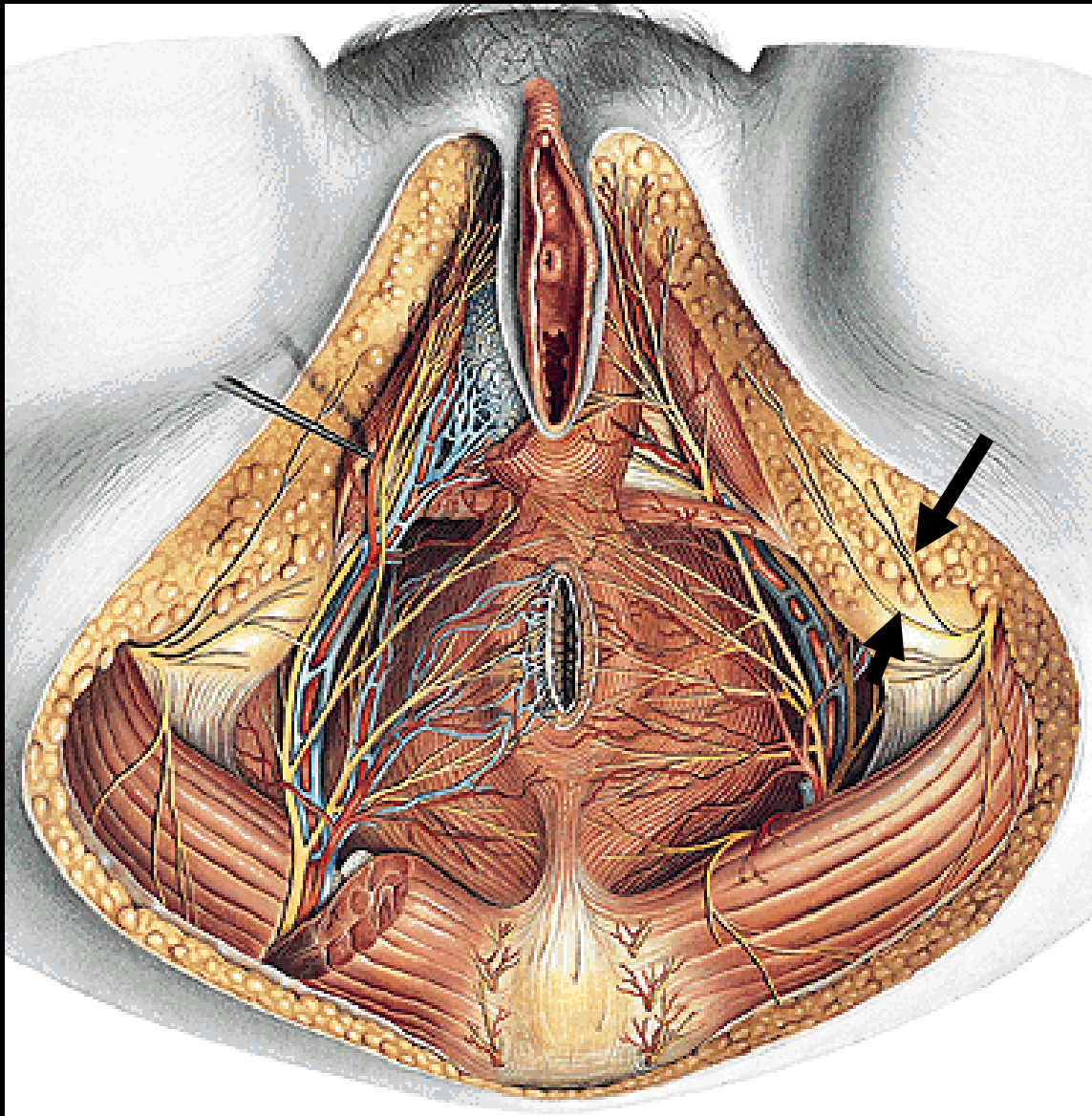
m. gluteus max.

N. cut. femoris post.



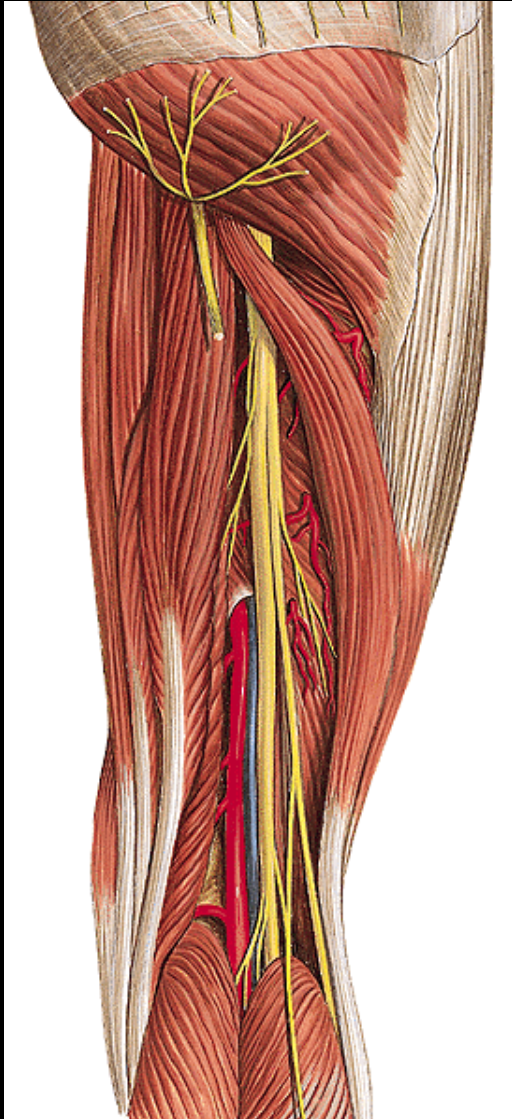
**Přes for. infrapirif.
poté subfasciálně**

**Nn. clunium inf.
Rr. perineales
Rr. cutanei**



Rr. perineales

N. ischiadicus



Přes for. infrapiriforme

Pod m. gluteus max.

Pod m. biceps fem. do fossa popl:

Rr. muscul:

m.

biceps fem.

m.

semitendin.

m.

semimembr.

m.

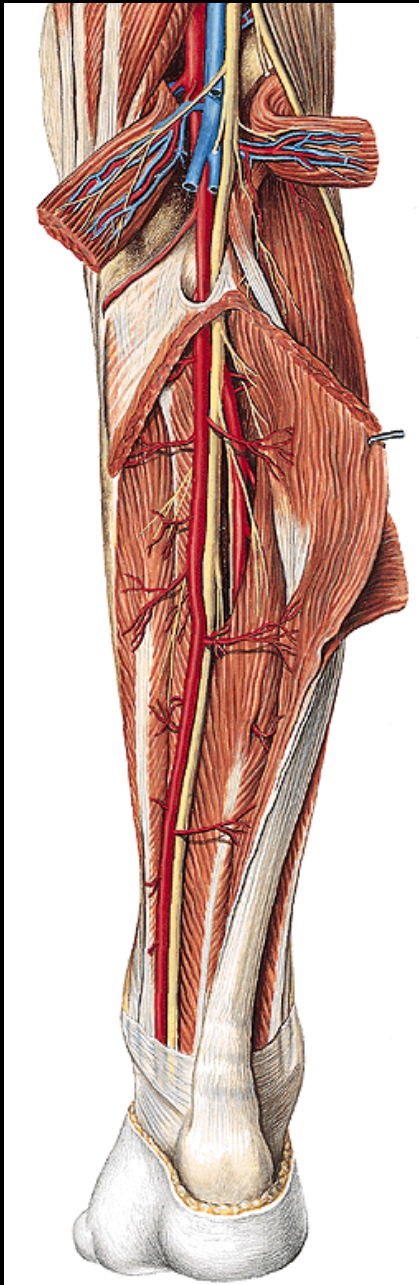
adductor magus

Sensit. větve pro: art. coxae, genus

N. tibialis

N. peroneus communis

N. tibialis



Mezi hlavami m. gastrocnemius

Pod m. soleus

Rr. muscul: m. triceps

m. popliteus

m. flx. digit. + hallucis longus

m. tibialis post.

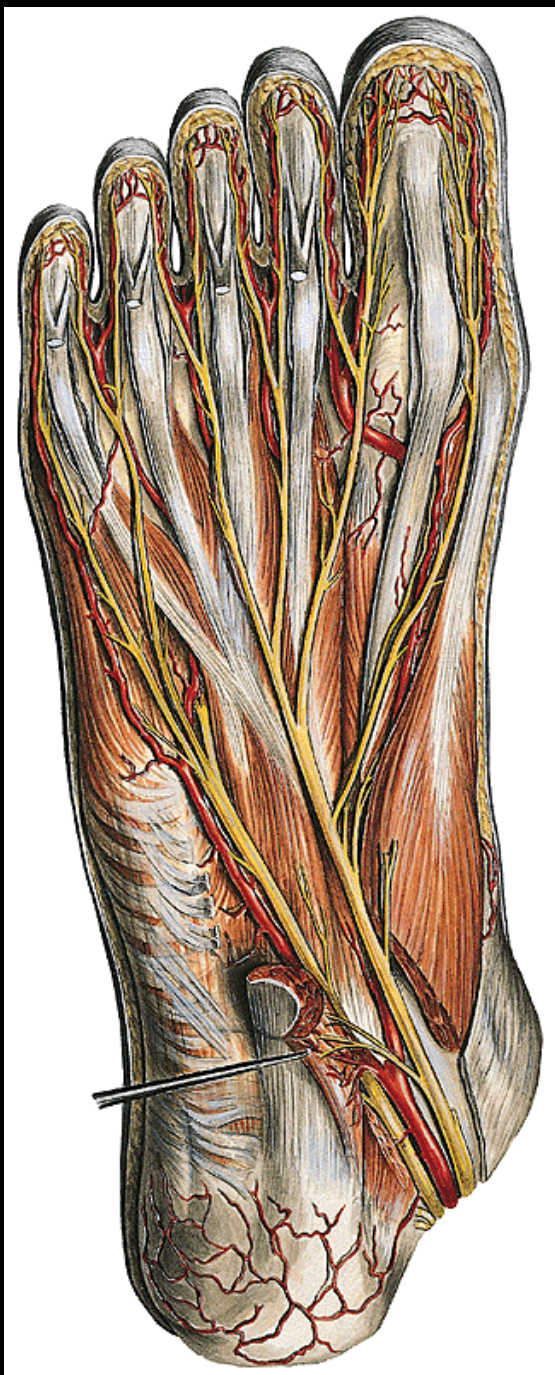
N. inteross cruris

N. cut. surae med.

Rr. calcanei lat.

Za vnitřní kotník > planta pedis

N. plantaris med. et lat.



N. plantaris med.

Rr. muscul:

m. flx. digit. brevis
m. abductor hallucis
m. flx. hallucis brevis
mm. lumbricales 1,2

Sensit. větve:

Nn. digit. plant. comm.:
Nn. digit. plant proprii

N. plantaris lat.

Rr. musc:

m. quadratus plantae

R. spf.:

R. musc:

m. abd. digiti min.

Nn. digit. plant comm. et proprii

R. prof.:

Rr. musc:

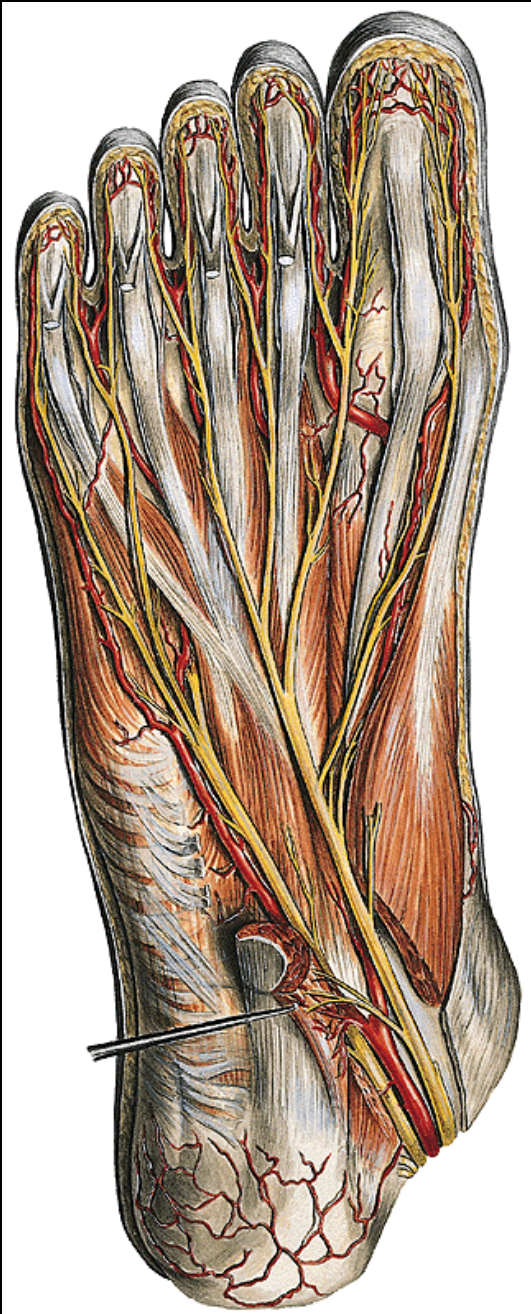
m. flx. digiti min. br.

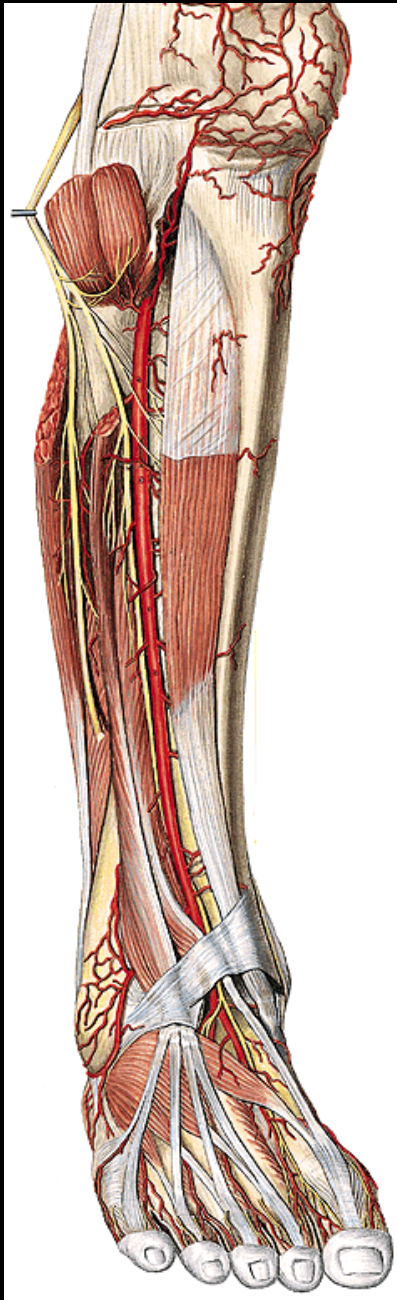
m. opponens digiti min.

mm. lumbicales 3,4

mm. interossei

m. adductor hallucis



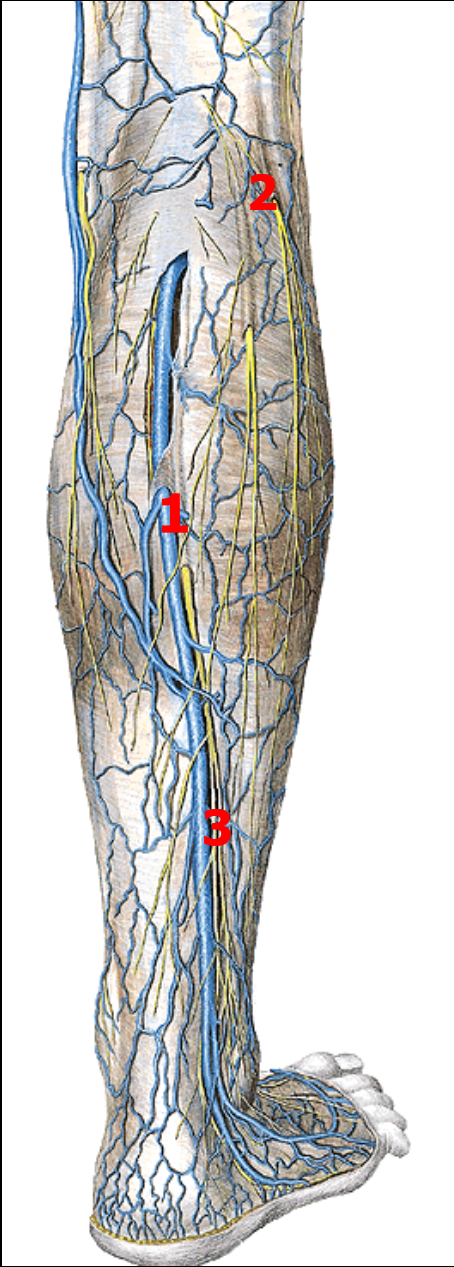


N. peroneus comm.

N. cut. surae lat.

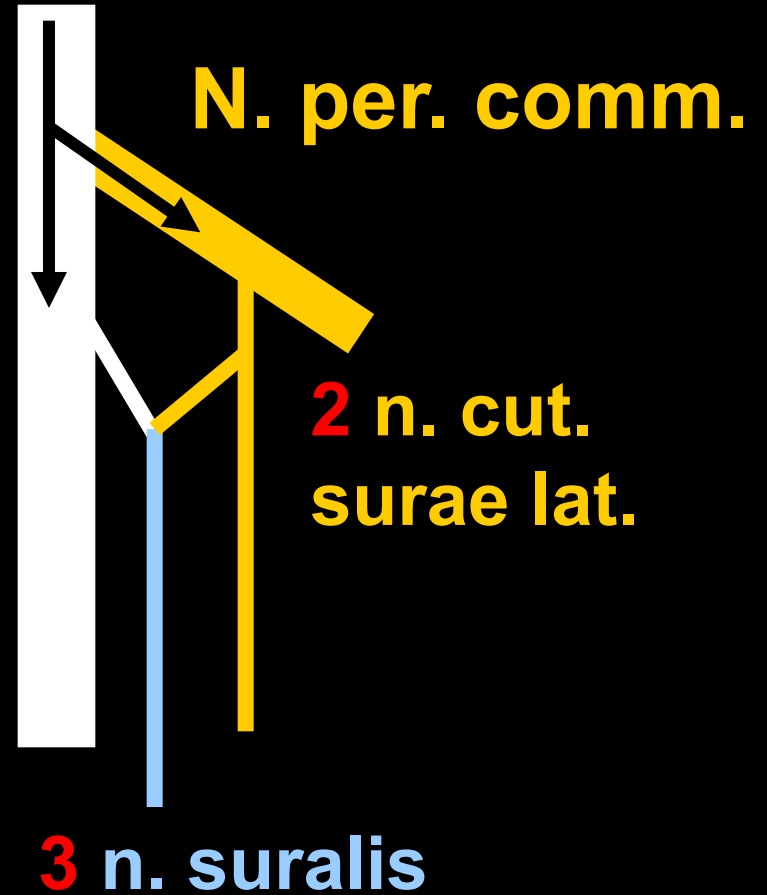
N. peroneus spf.

N. peroneus prof.

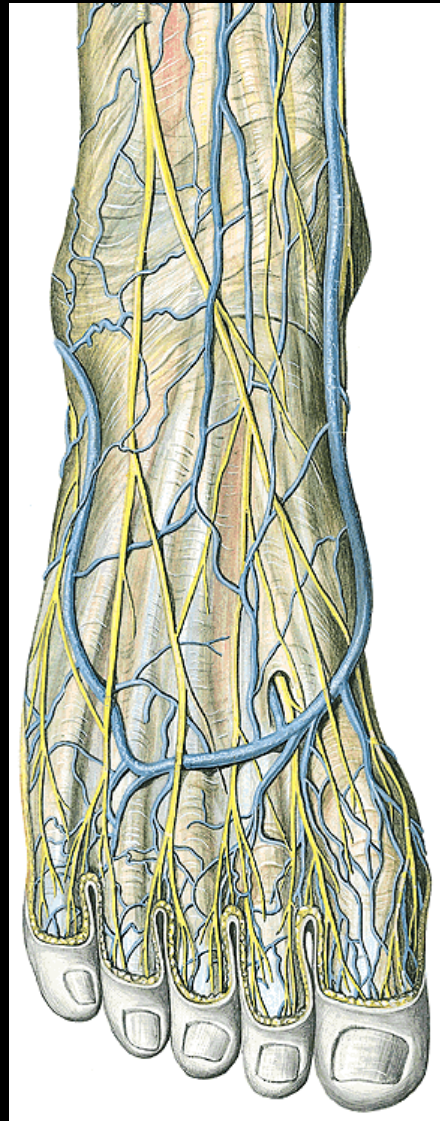
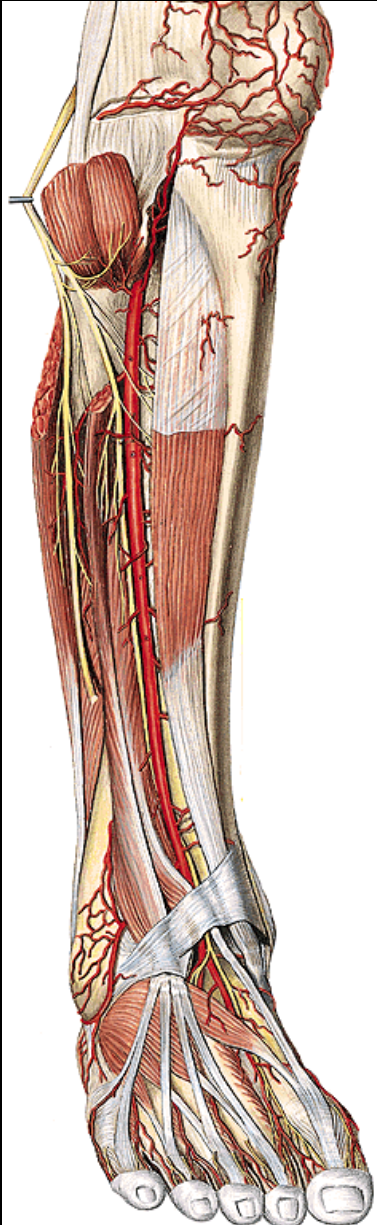


N. tibialis

**1 n. cut.
surae med.**



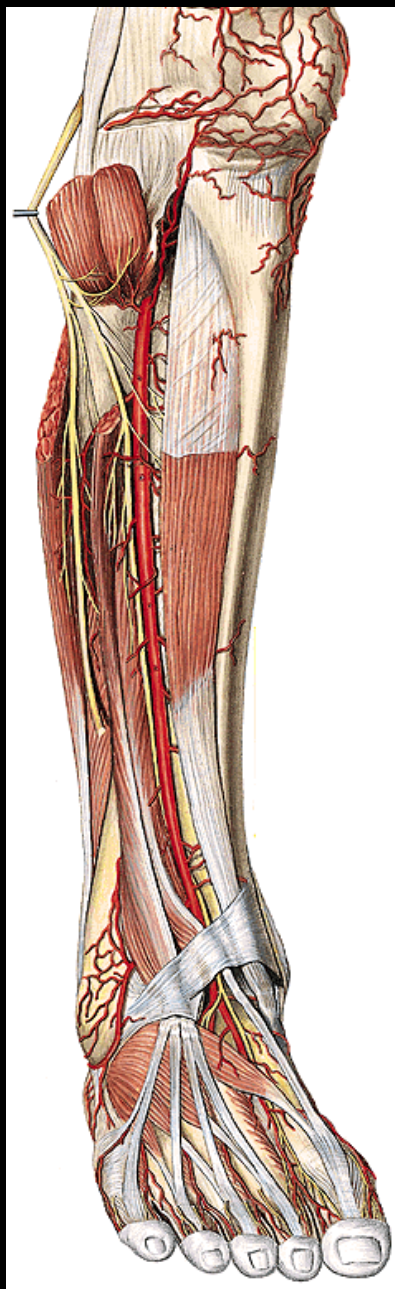
N. peroneus spf.



Rr. musc: mm. peronei

N. cut. dors. med.

N. cut. dors. intermed.



N. peroneus prof.

Rr. musculi:

m. tibialis ant.

m. ext. digit. longus

m. ext. hallucis longus

krátké extenzory nohy

Nn. digitales dorsales pedis

(mezi 1. a 2. prstem)