

Topografická anatomie DK



Trig femorale

R femoris ant et post

R genus ant et post

R cruris ant et post

R digiti

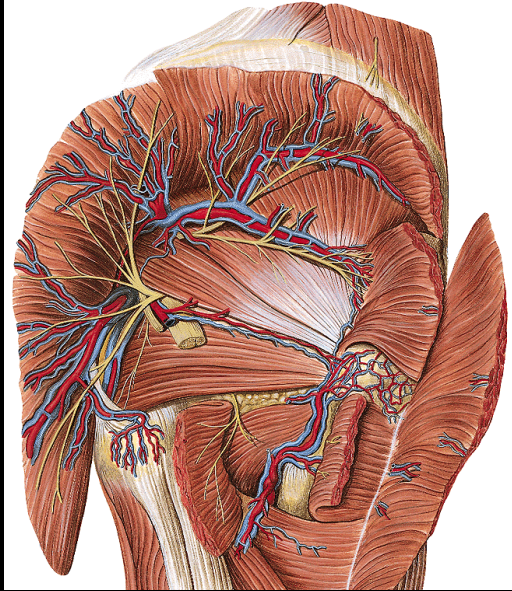
**R dors
pedis**



R glutea

**R plant
pedis**

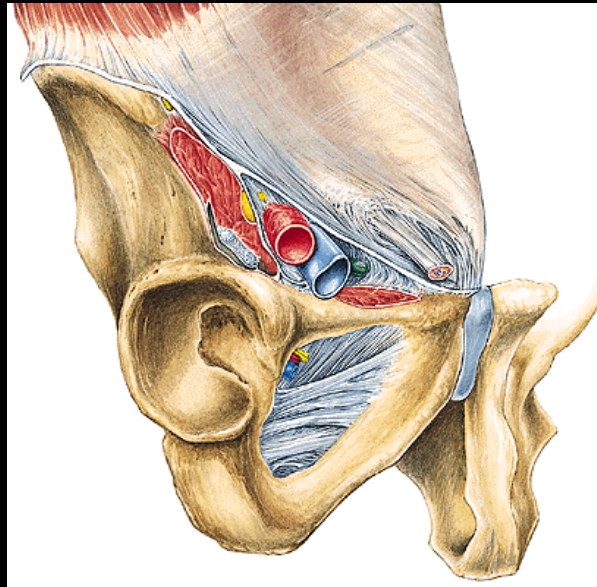
Prostup cév a nervů z trupu



Dors:

for. suprapiriforme

for. infrapiriforme



Ve:

lacuna muscul.

lacuna vasorum

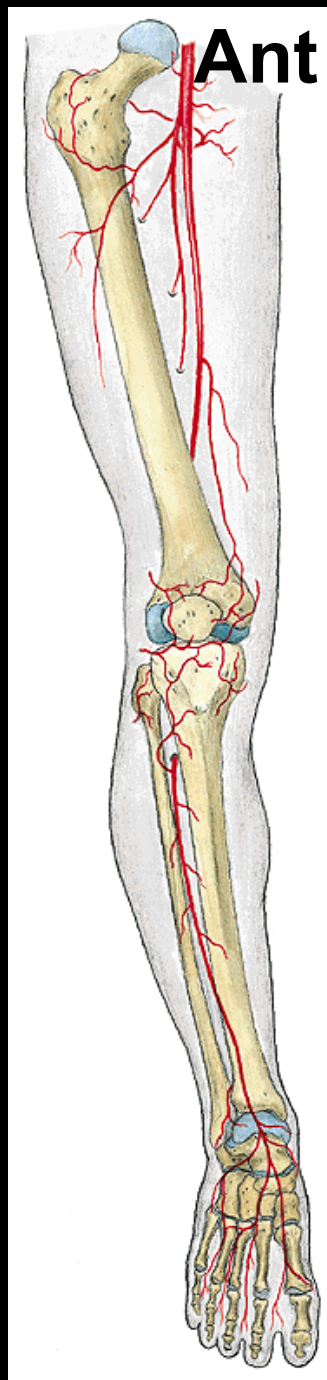
Med:

canalis obturat.

A femor
A prof fem

A tib ant

A dors pedis

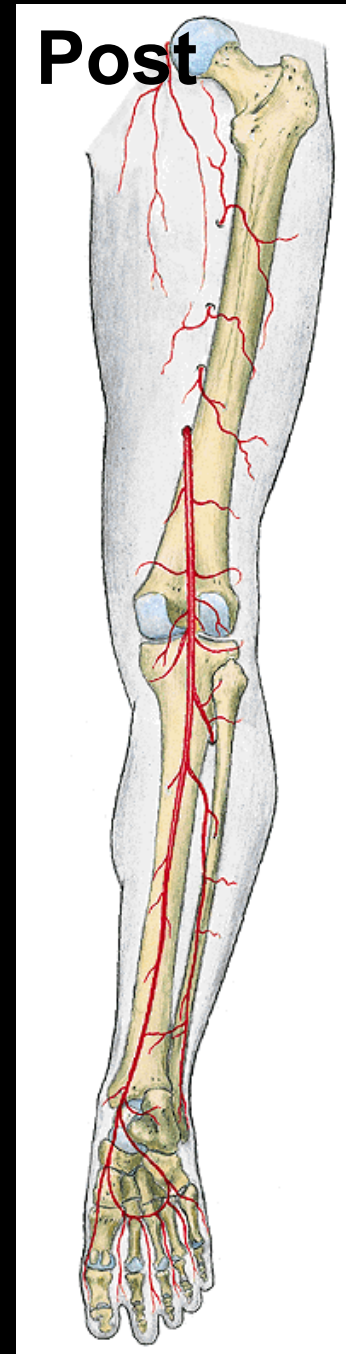


Aa perfor

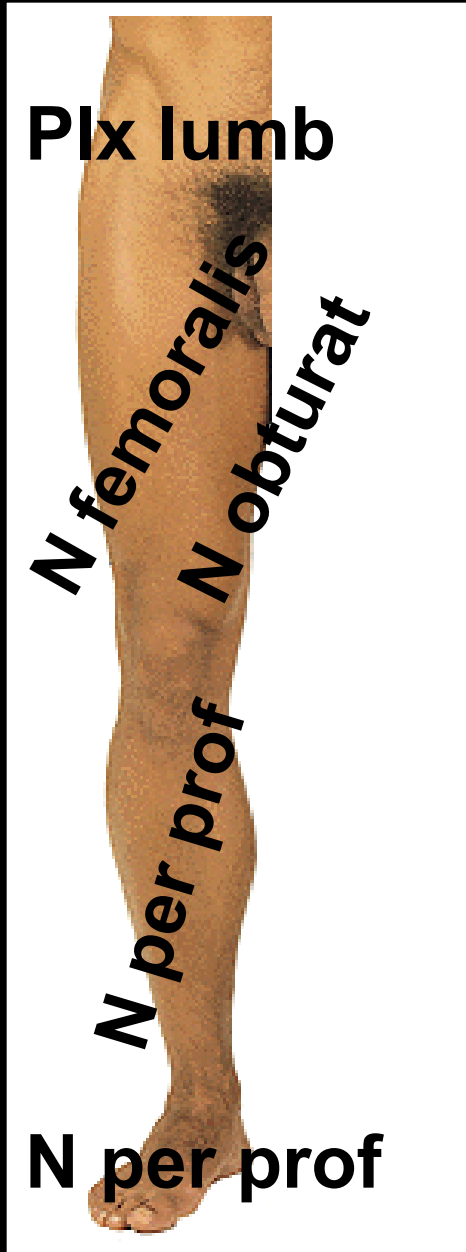
A poplitea

A tib post
A peronea

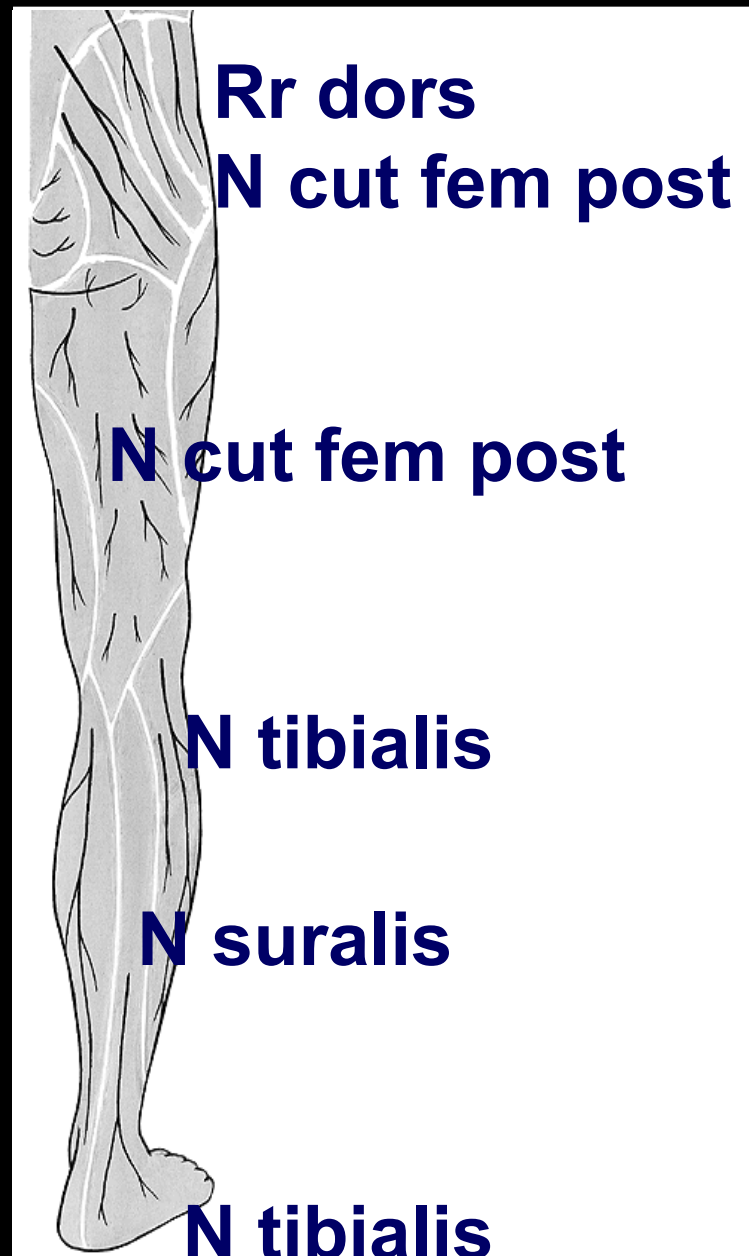
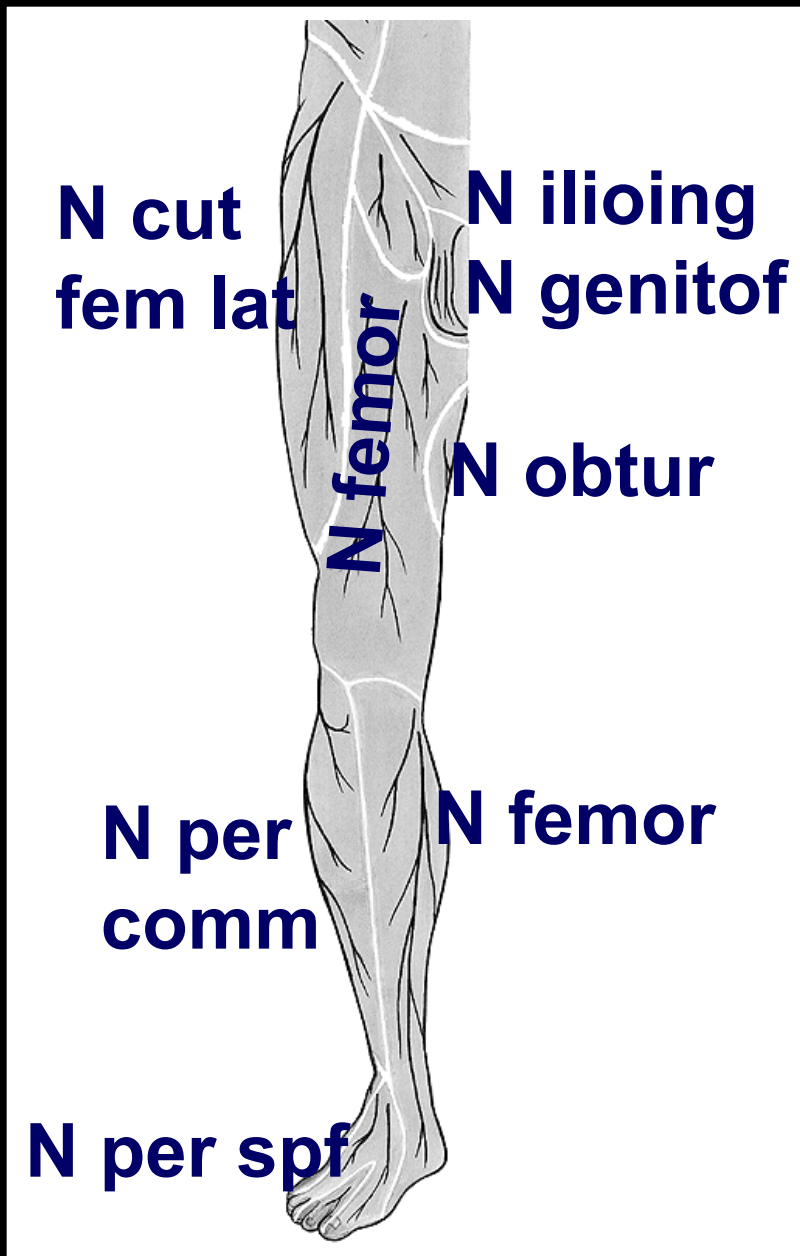
Arcus plant
z a plant m+l



Motorická inervace



Kožní inervace



R. glutea

the main difference between
Europe and USA



orikk:)

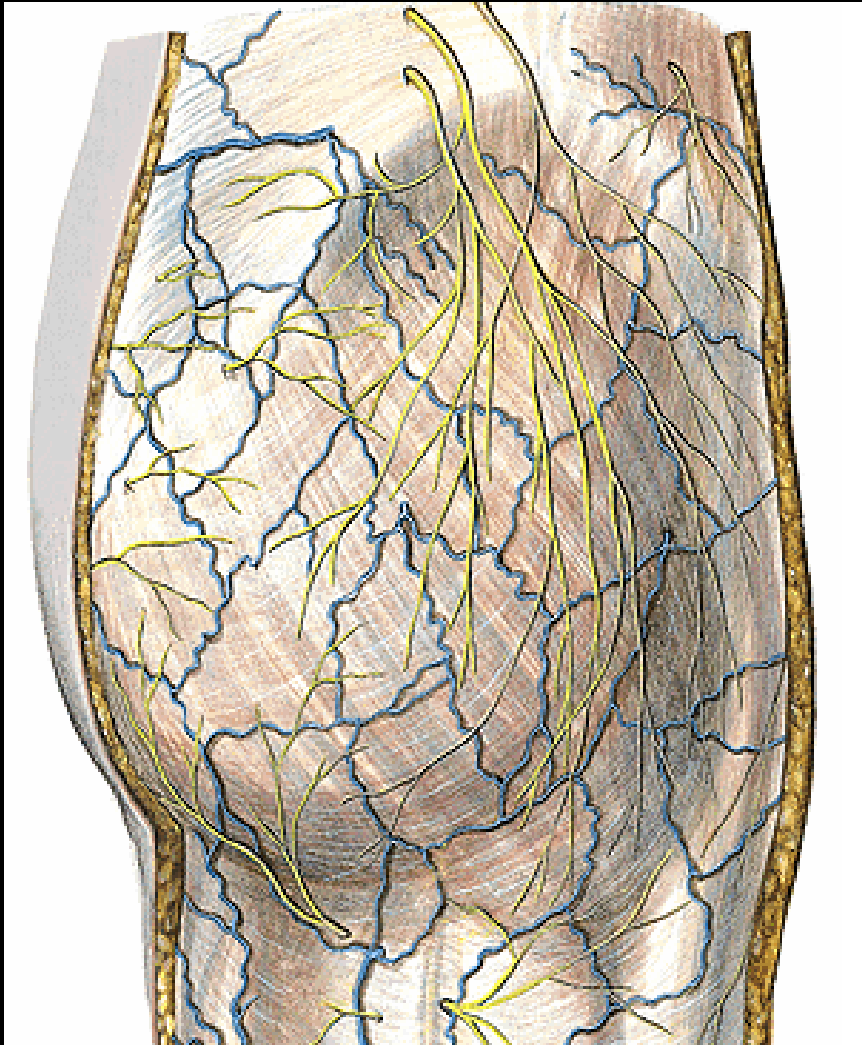


Kůže

Podkoží

Povrch. fascie

Svalová hmota

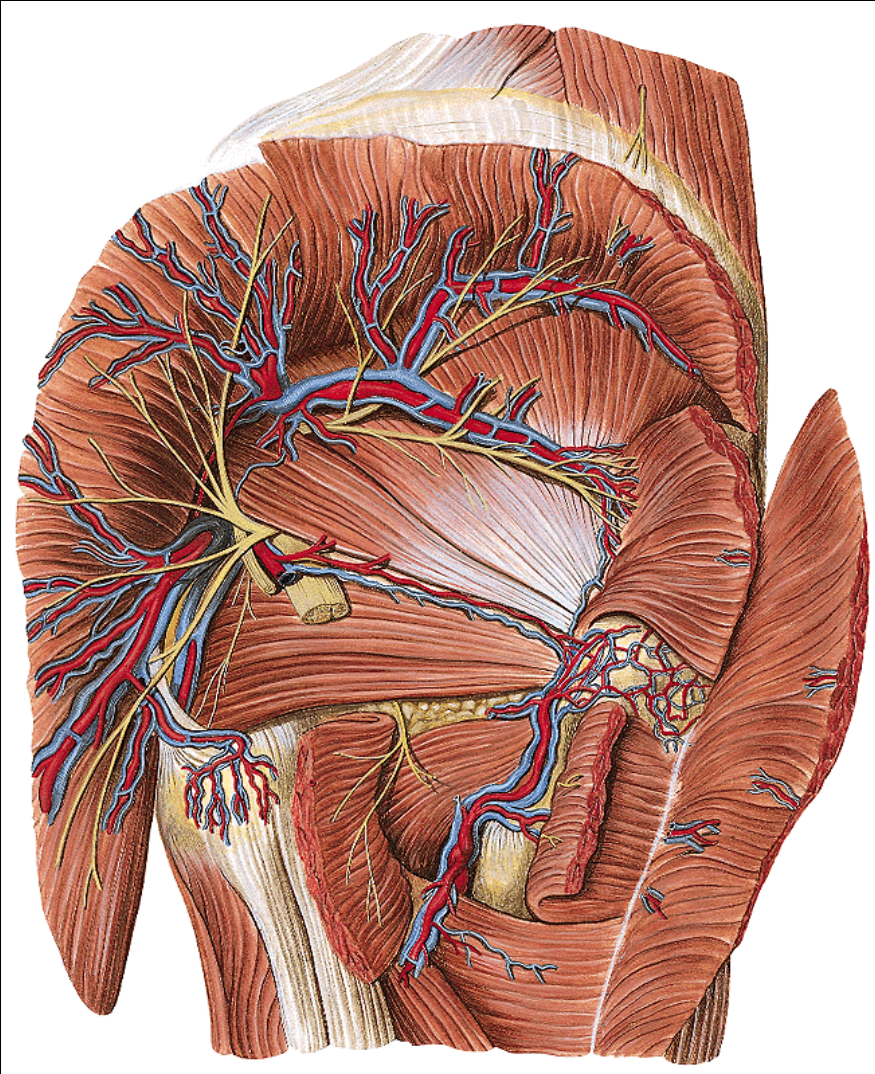


Nn. clunium:

sup. (rr. dors.)

med. (rr. dors.)

inf. (plx. sacr.)



For suprapiriforme:

N gluteus sup

Av glutea sup

For infrapiriforme:

N ischiadicus

N gluteus sup

N cut femoris post

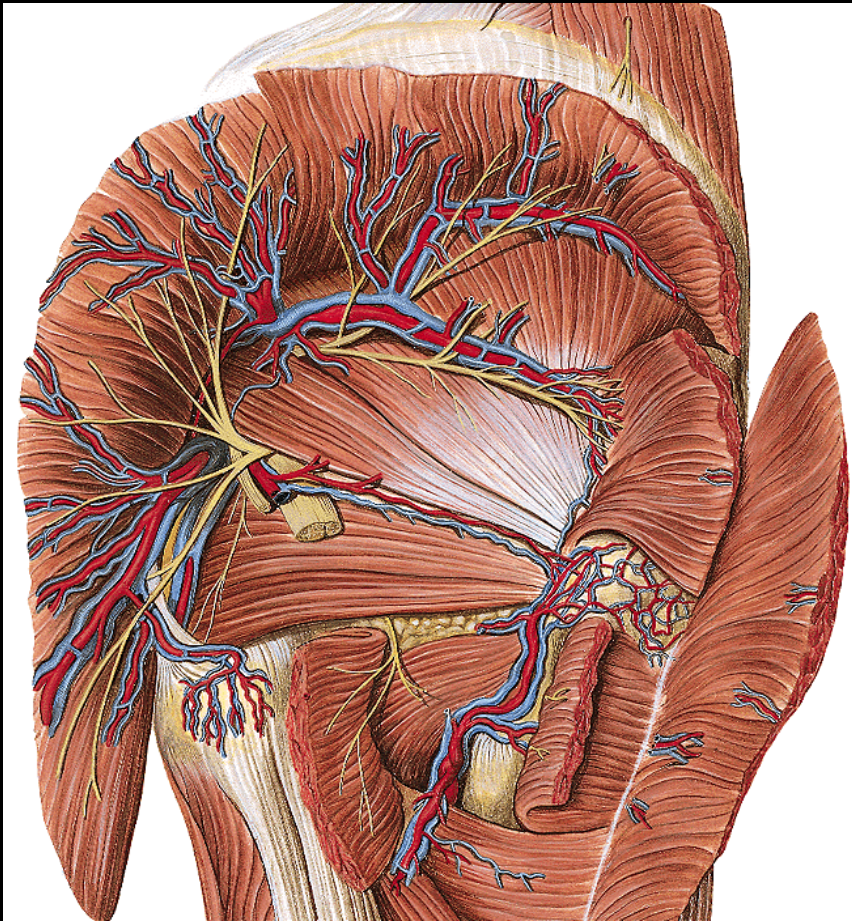
N pudendus

Av glutea inf

Av pudenda int

Klinická poznámka

Aplikace i.m. injekce:



zevní horní kvadrant

R. femoris et genus

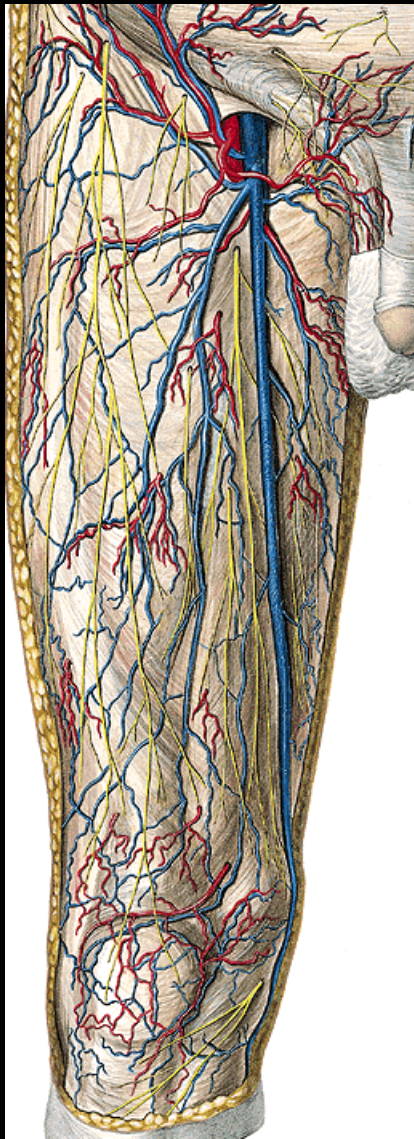


Kůže

Podkoží

Povrchová fascie

Svalová hmota

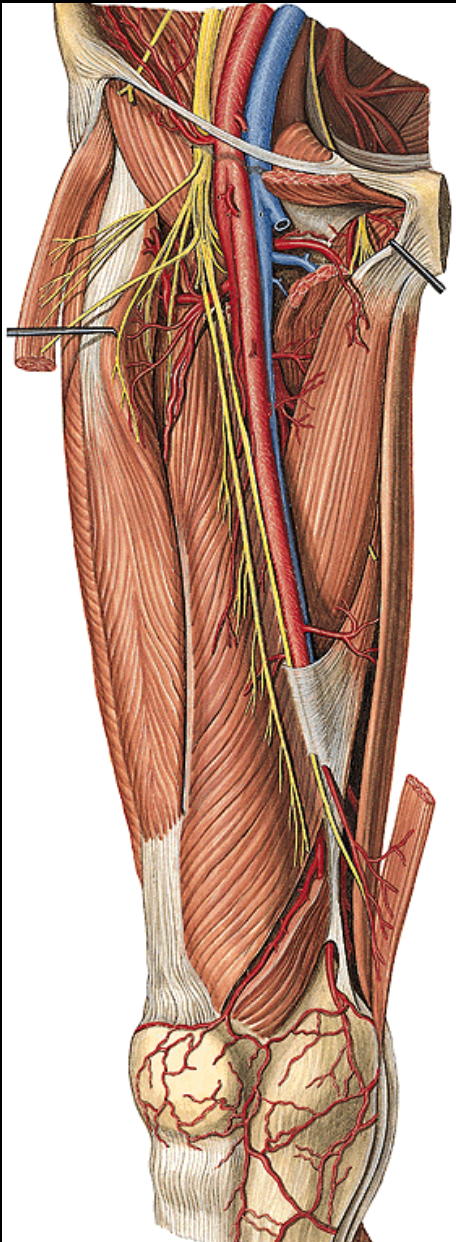


V. saph. magna
Av. epig. spf.
Av. circumfl. il. spf.
Av. pud. ext.

N. cut. fem. lat.
N. femoralis rr. cut. ant.
N. obturat. r. cut. med.

N. cut. f. post.
V. femoropopl.





Canalis adduct:

**M. vastus med.
x add. magnus**

N. saphenus

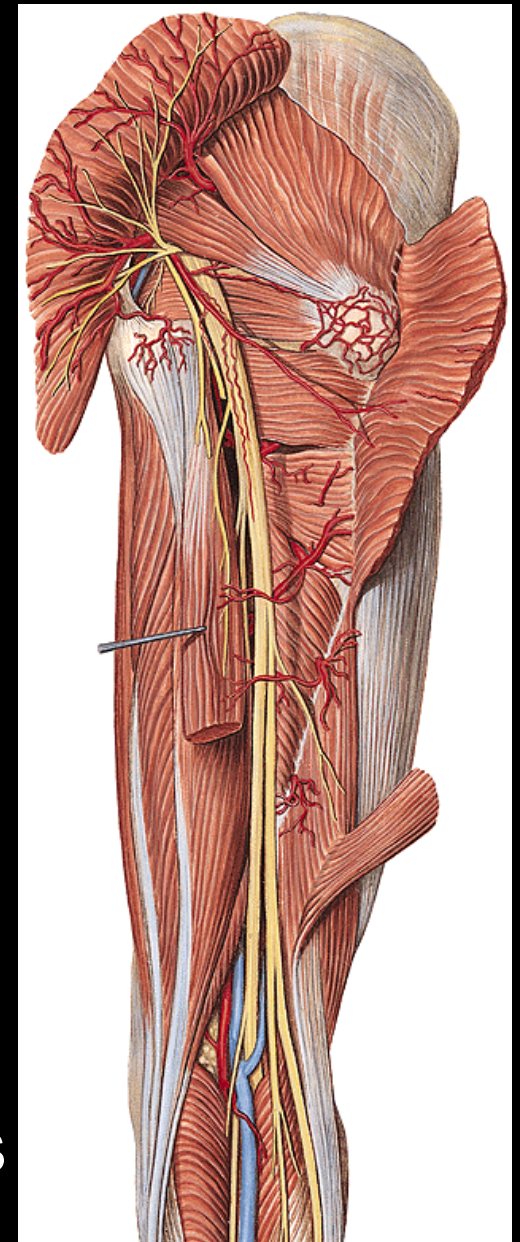
Av. femoralis

Hiatus tendineus

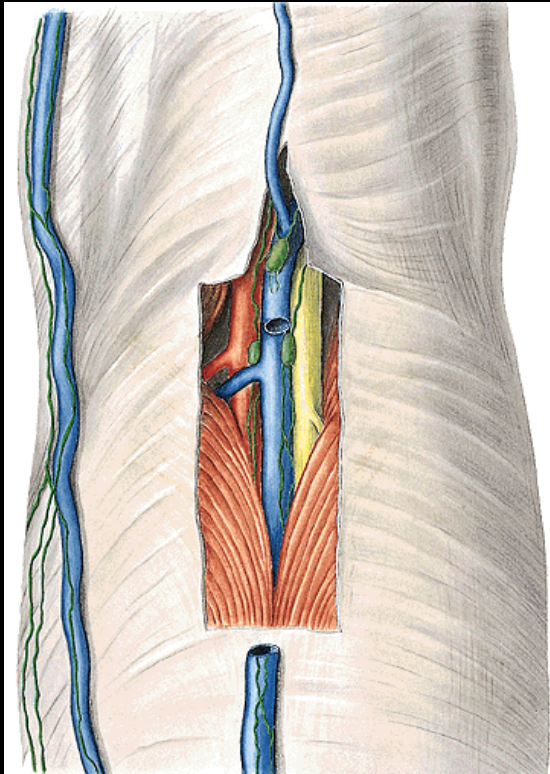
N. ischiadicus

Rr. perforantes

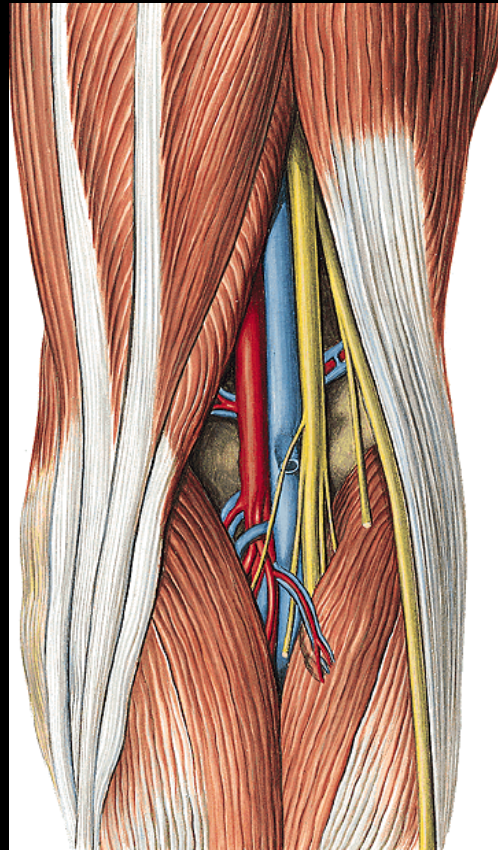
- a. prof. femoris



Fossa poplitea



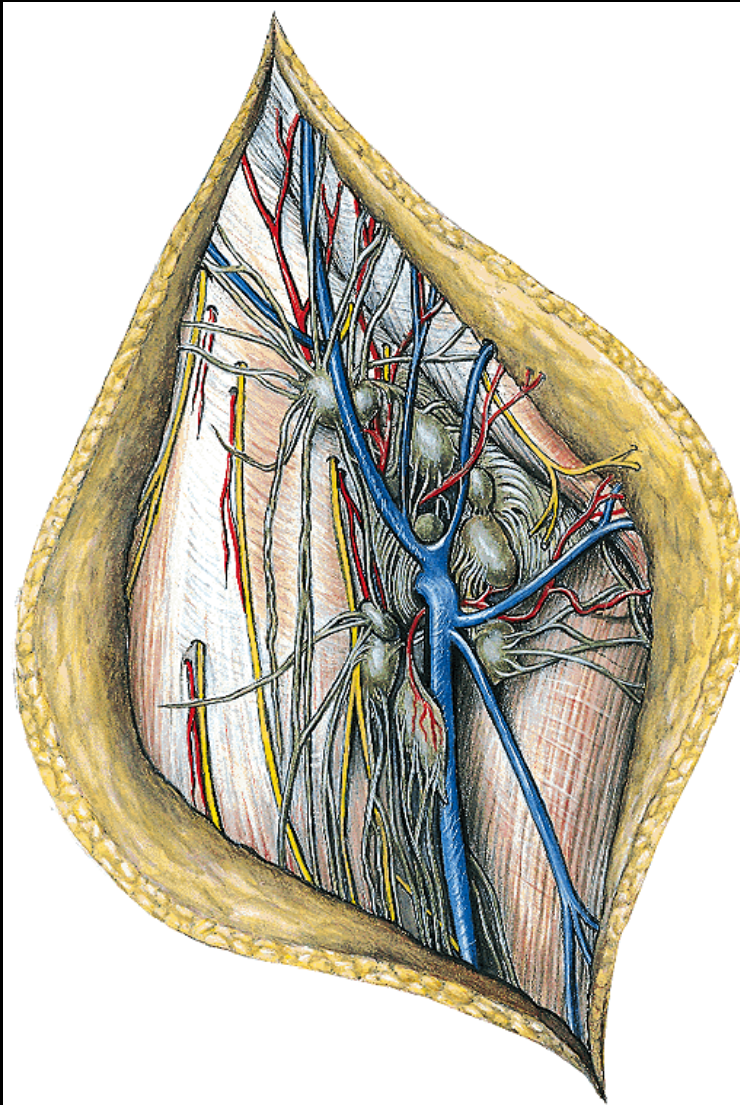
V. saph parva
NII. poplitei spf.



N. ischiadicus:
N. tibialis
N. per. com

Av. poplitea
NII. poplitei prof.

Trig. femorale



Lig. inguinale - m sartorius
- m adductor longus

Povrchová vrstva:

V. saph magna

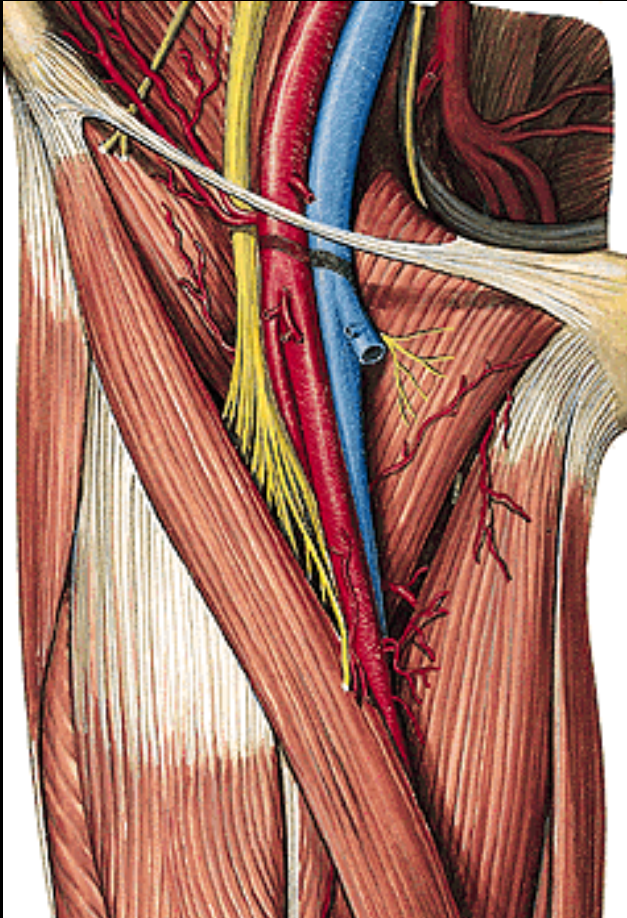
N. ilioinguinalis

N. genitofemoralis

(r femoralis)

Nll. ing spf

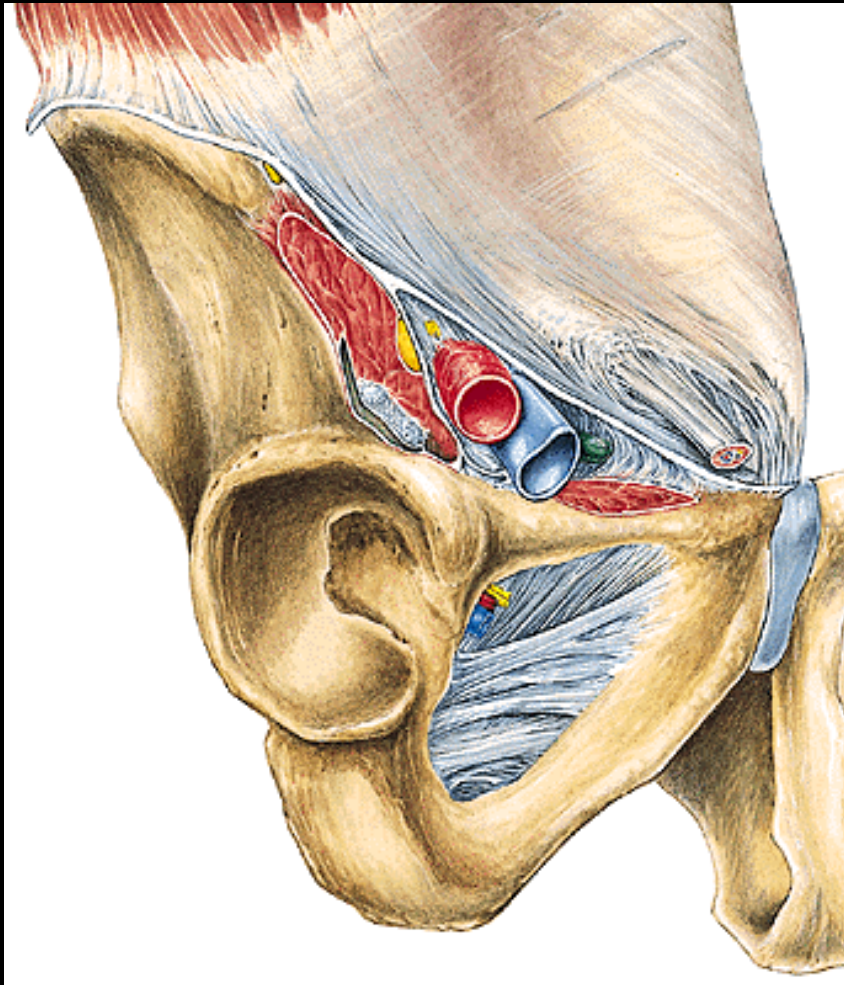
Fossa iliopectionea



Tvar pyramidy:
základna - lacuna vasorum
hrot - vstup do canalis adduct.

Obsah: n. femoralis
av. femoralis
nll. inguinales prof

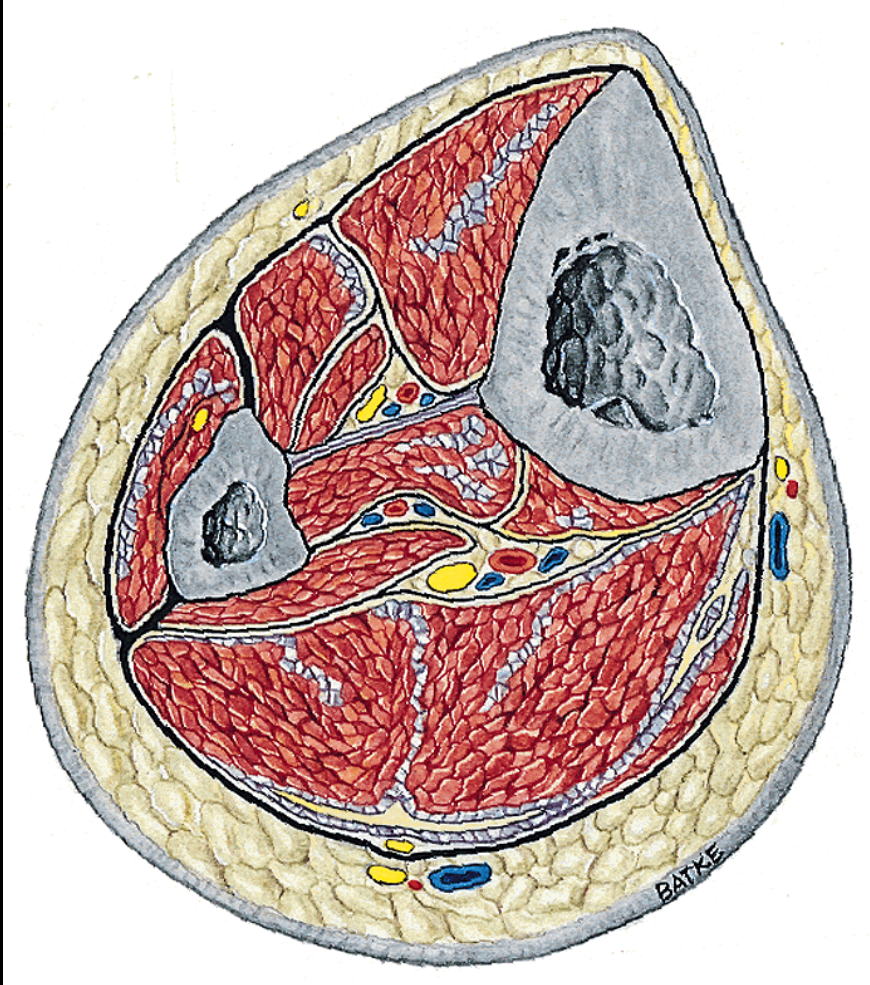
Klinická poznámka



Lacuna vasorum

Femorální hernie

R. cruris

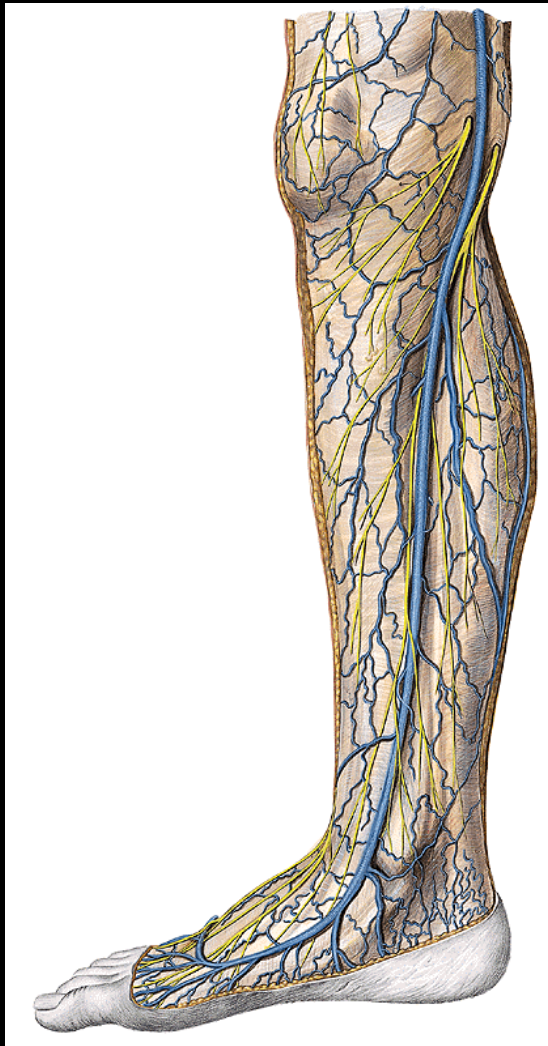


Kůže

Podkoží

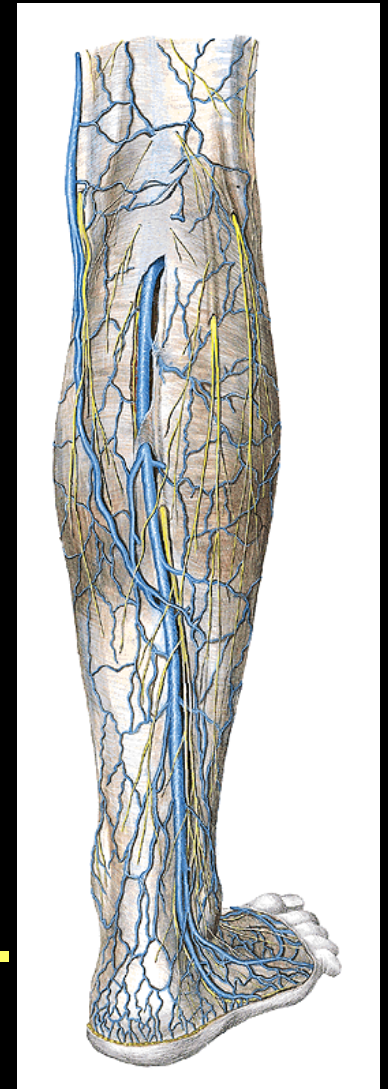
Povrchová fascie

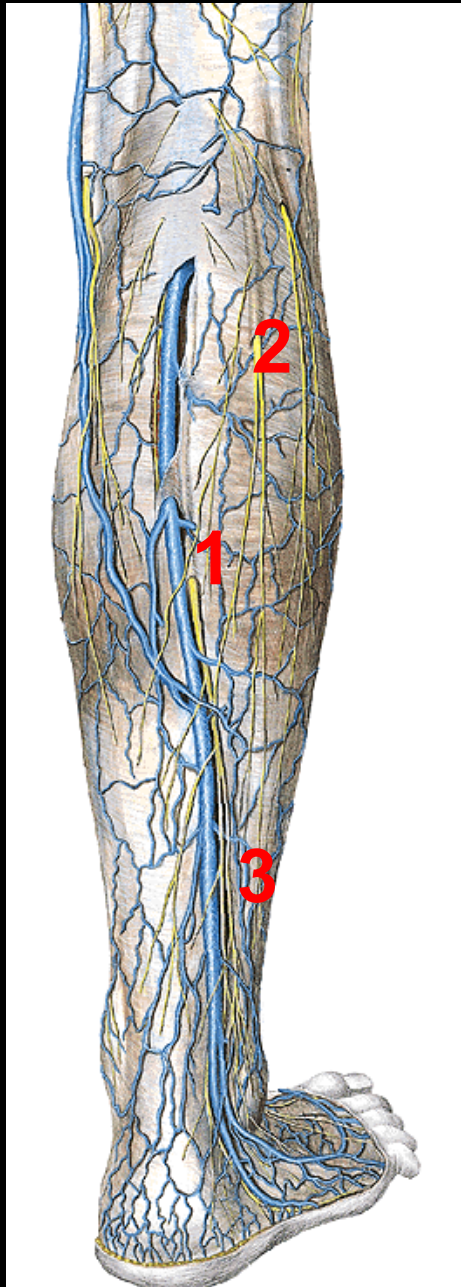
Svalová hmota



V. saph magna
N. saphenus -
rr. cut cruris med

V. saph. parva
N. cut. surae med.
N. suralis





N. ischiadicus

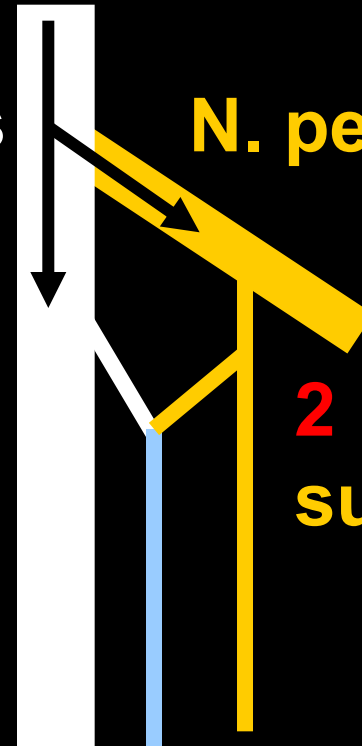
N. tibialis

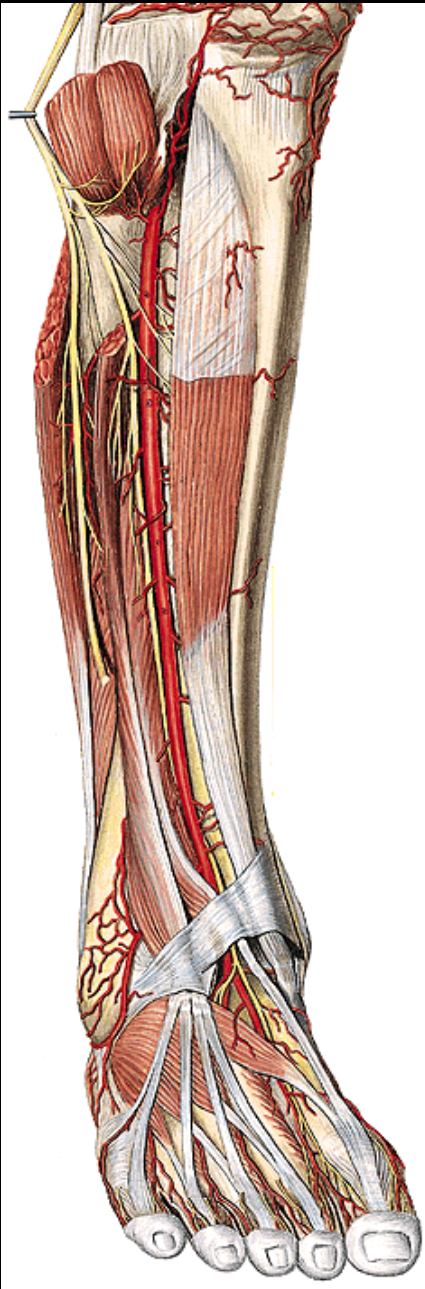
N. peron. comm

1 N. cut.
surae med.

2 N. cut.
surae lat.

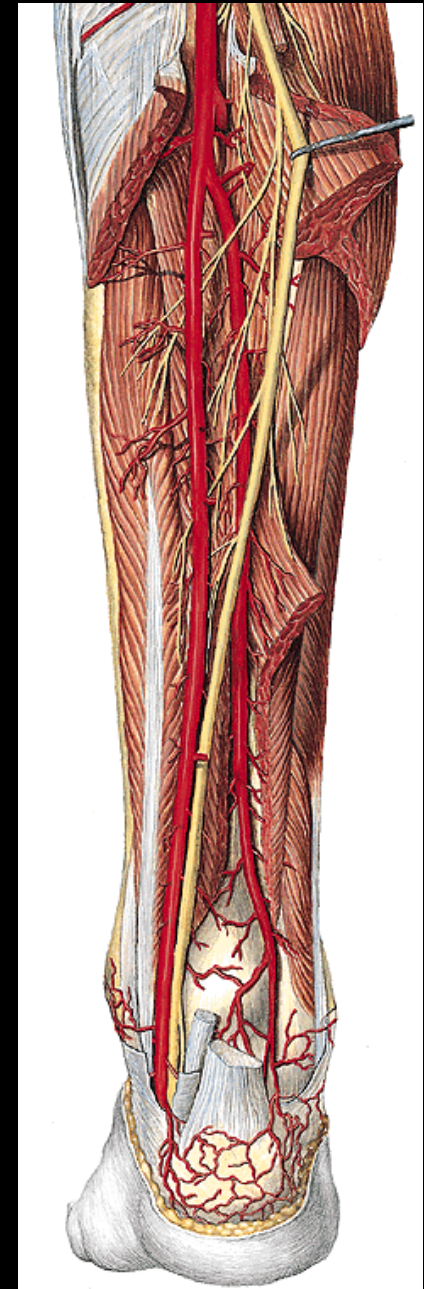
3 N. suralis





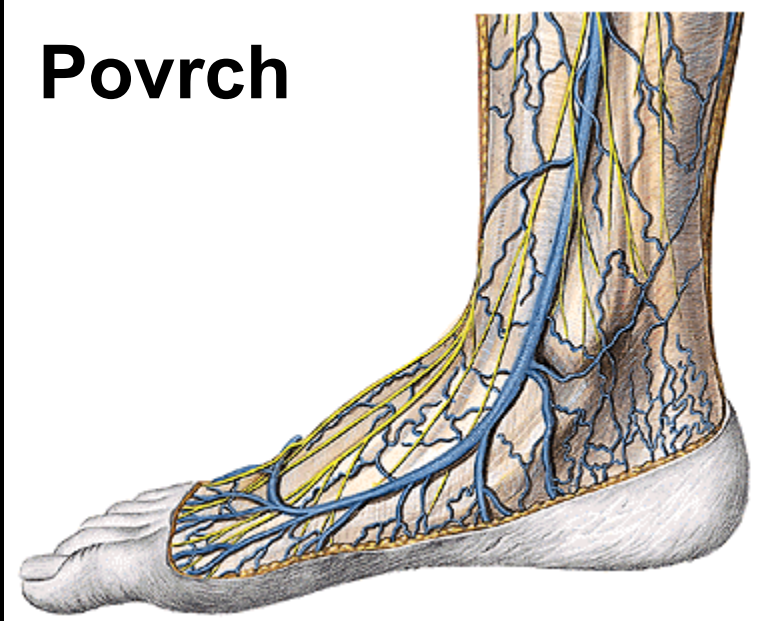
N. peron. spf.
N. peron. prof.
Av. tibialis ant.

N. tibialis
Av. tibialis post.
A. peronea



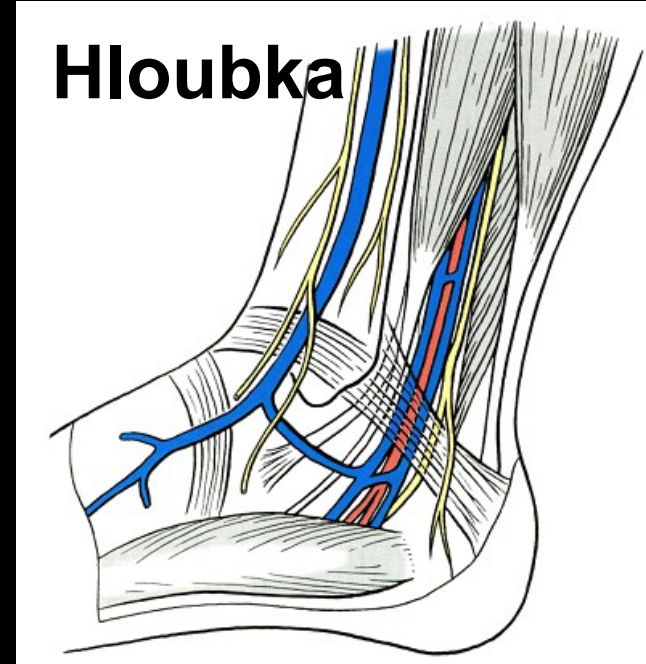
R. retromalleolaris med.

Povrch



V. saph. magna

Hloubka



**Přechod cév a nervů
do chodidla !**

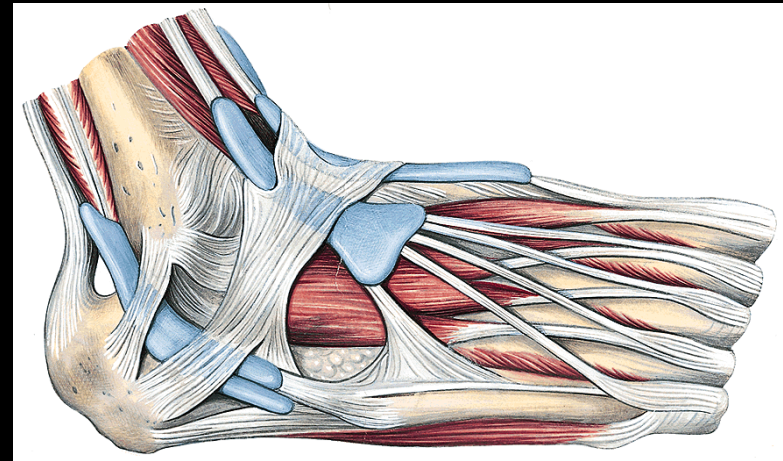
N. tibialis

Av. tibialis post.

R. retromalleolaris lat.

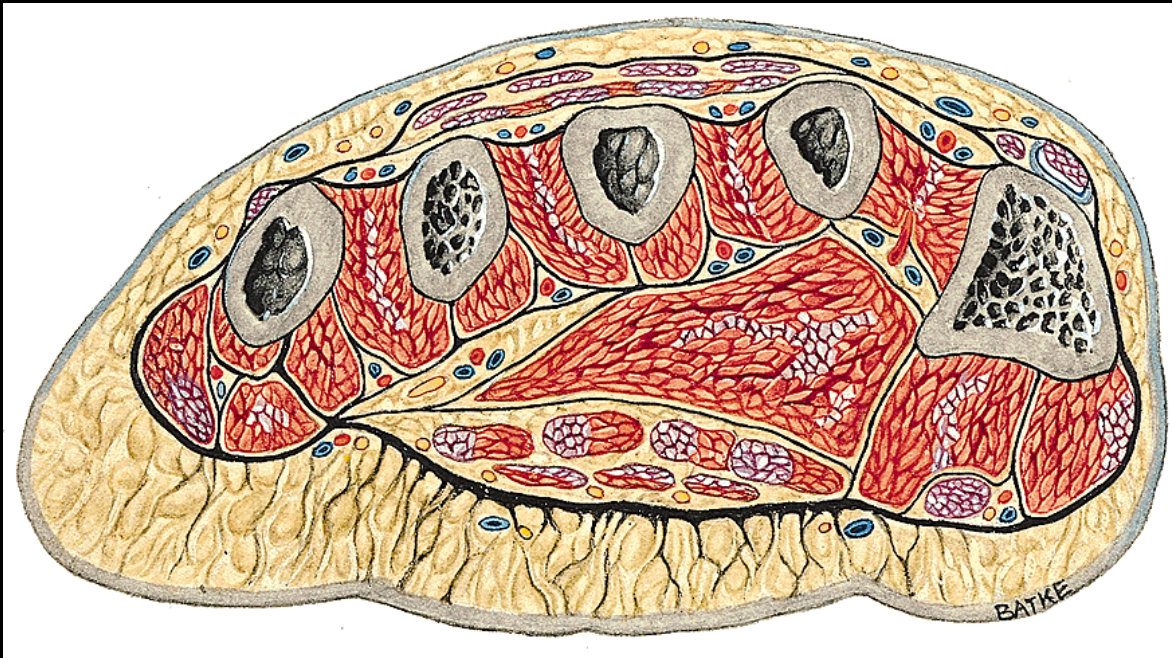


V. saph. parva
N. suralis



Šlachy m peron longus
+ brevis
Šlachové pochvy

R. dors. pedis et digiti



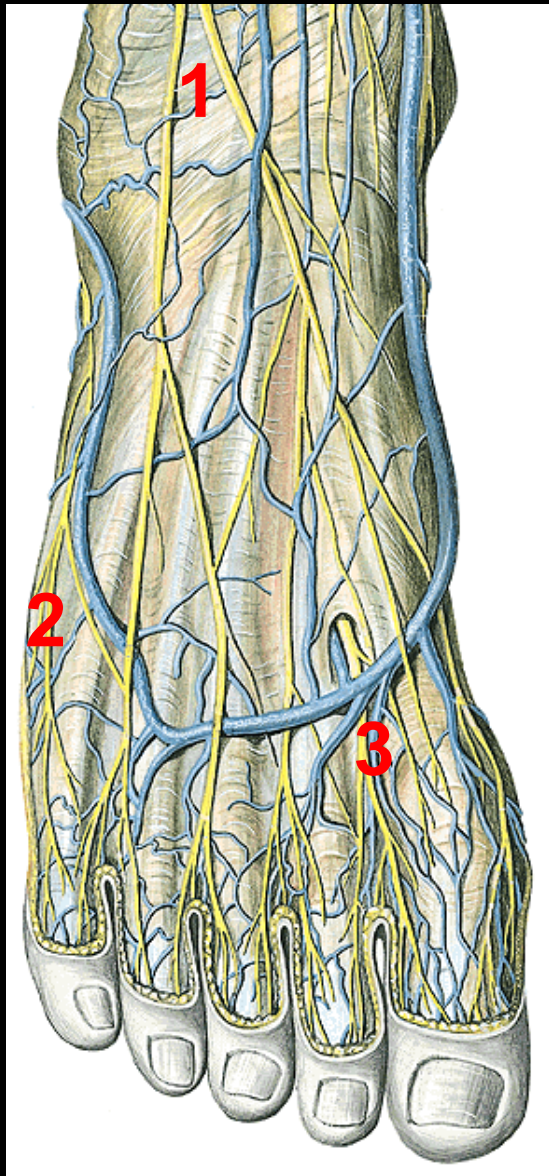
Kůže

Podkoží

Povrch fascie

Svalová vrstva

I. sin., řez přes metatarsy
Pohled zdola



Rete venosum dors pedis

1 N. per. spf.

- n .cut. dors .med+interm

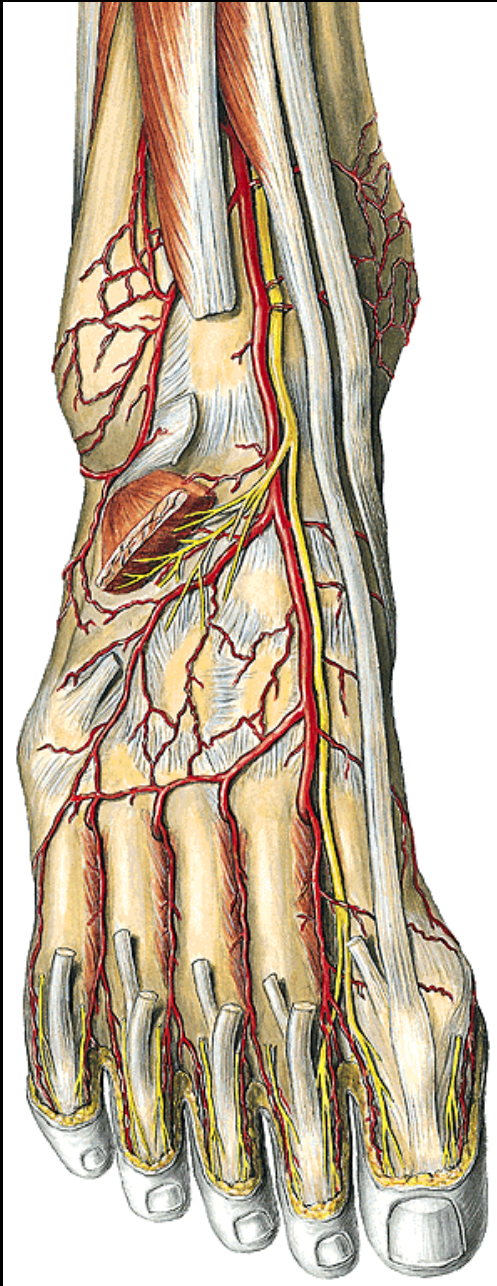
2 N. **suralis** - n. cut. dors. lat.

3 N. per. prof.

N. peron. spf. + prof.

- nn. digit . dors.

Av. digit. dors.



N. peroneus prof.

A. dors. pedis:

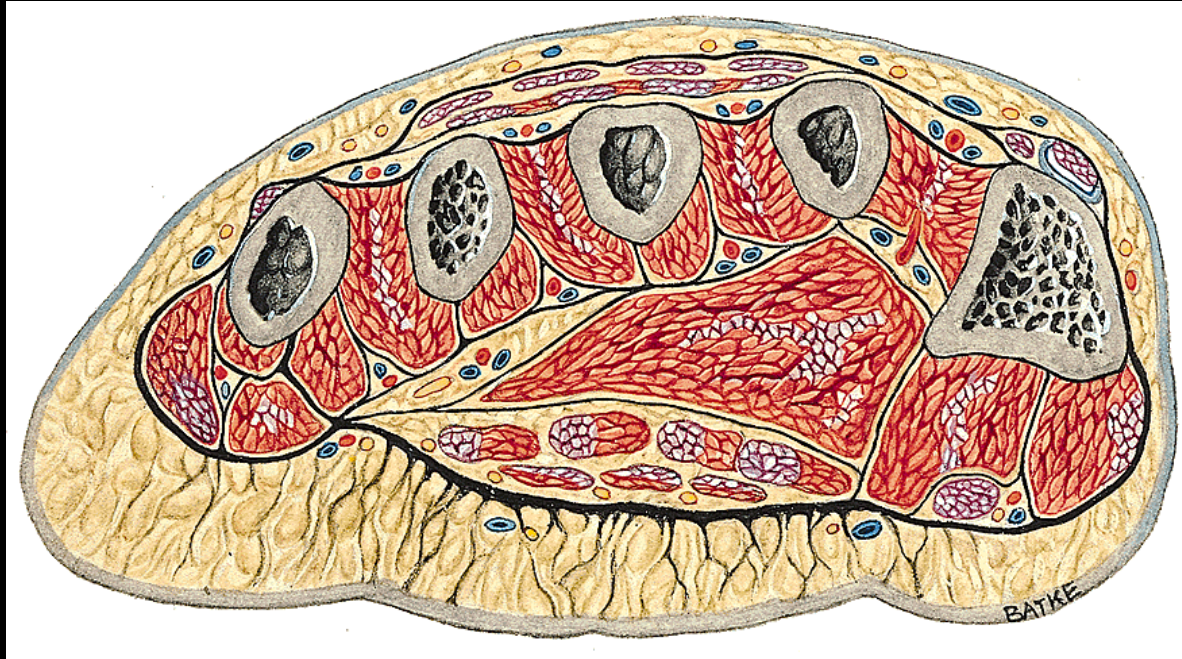
A. arcuata + a. tarsea lat.

aa. metatarsae dors.

aa. digitales dors.

A. metatarsae dors. prima

R plant pedis + digiti



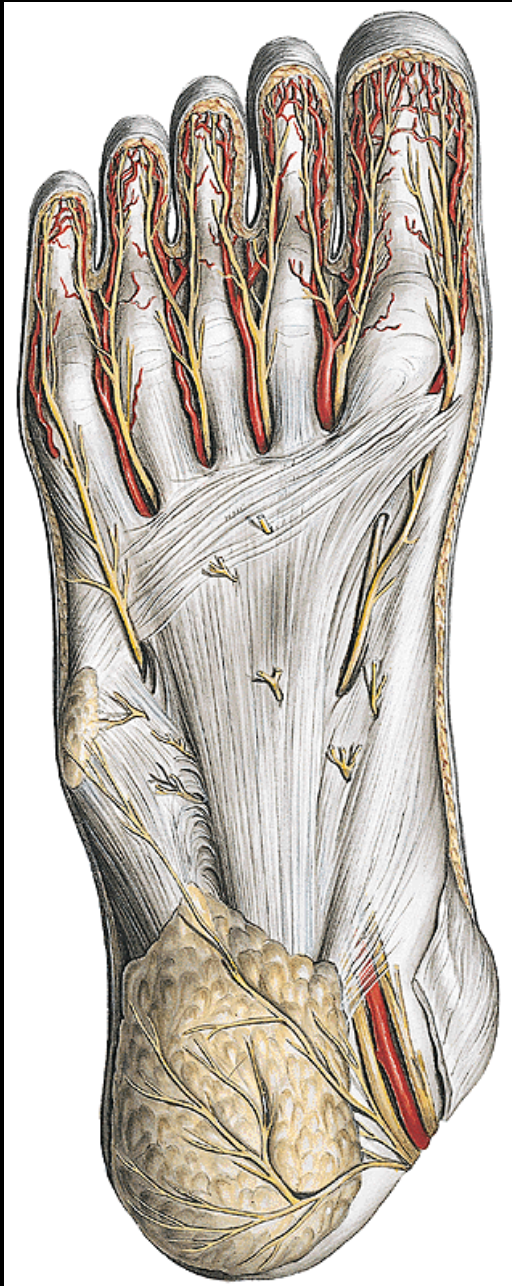
Kůže

Podkoží

Fascia spf

Svaly

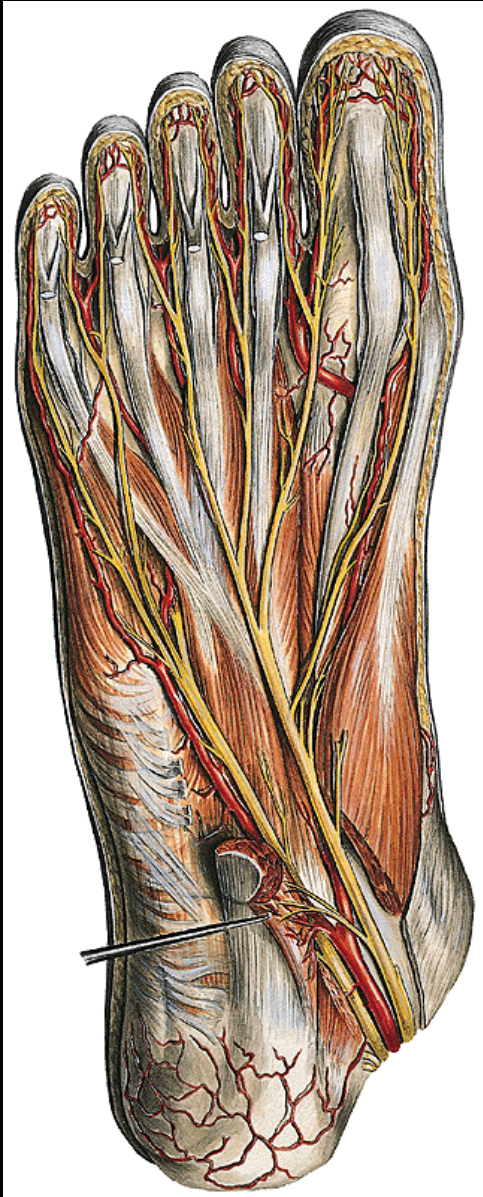
Fascia prof



Aponeurosis plantaris

Nn. digitales plant.

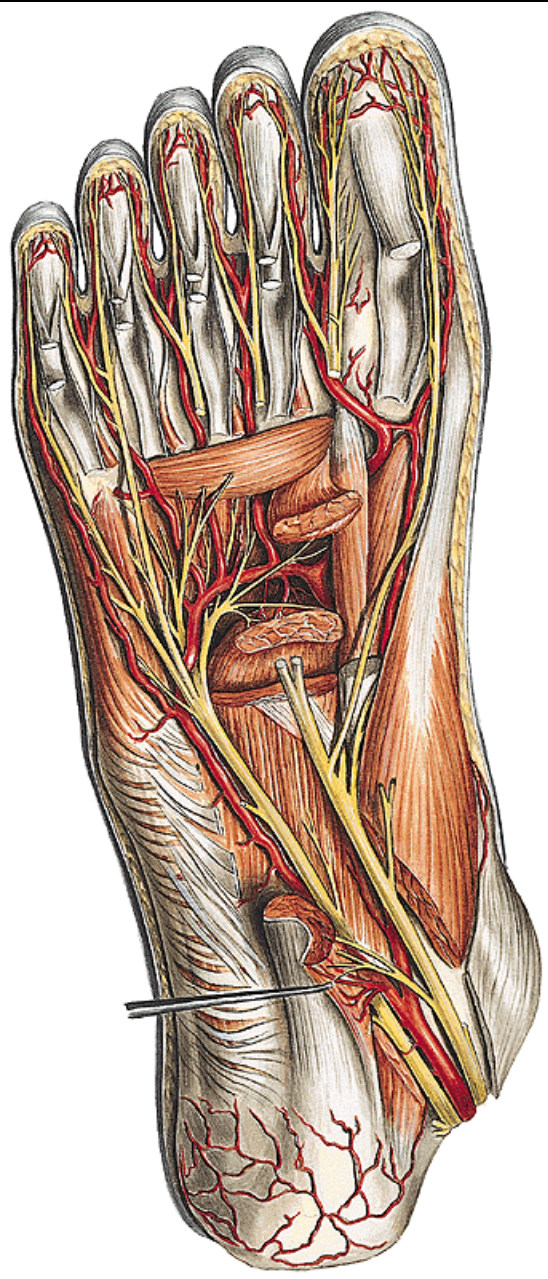
Av. digitales plant.



Šlachy flexorů

N. plant. med. et lat.

Av. plant. med. et lat.



Aa. plantares } **Arcus plant**
+ R. plant. prof }
z a. dors. pedis

Aa. metatars. plant.
Aa. digit. plant.