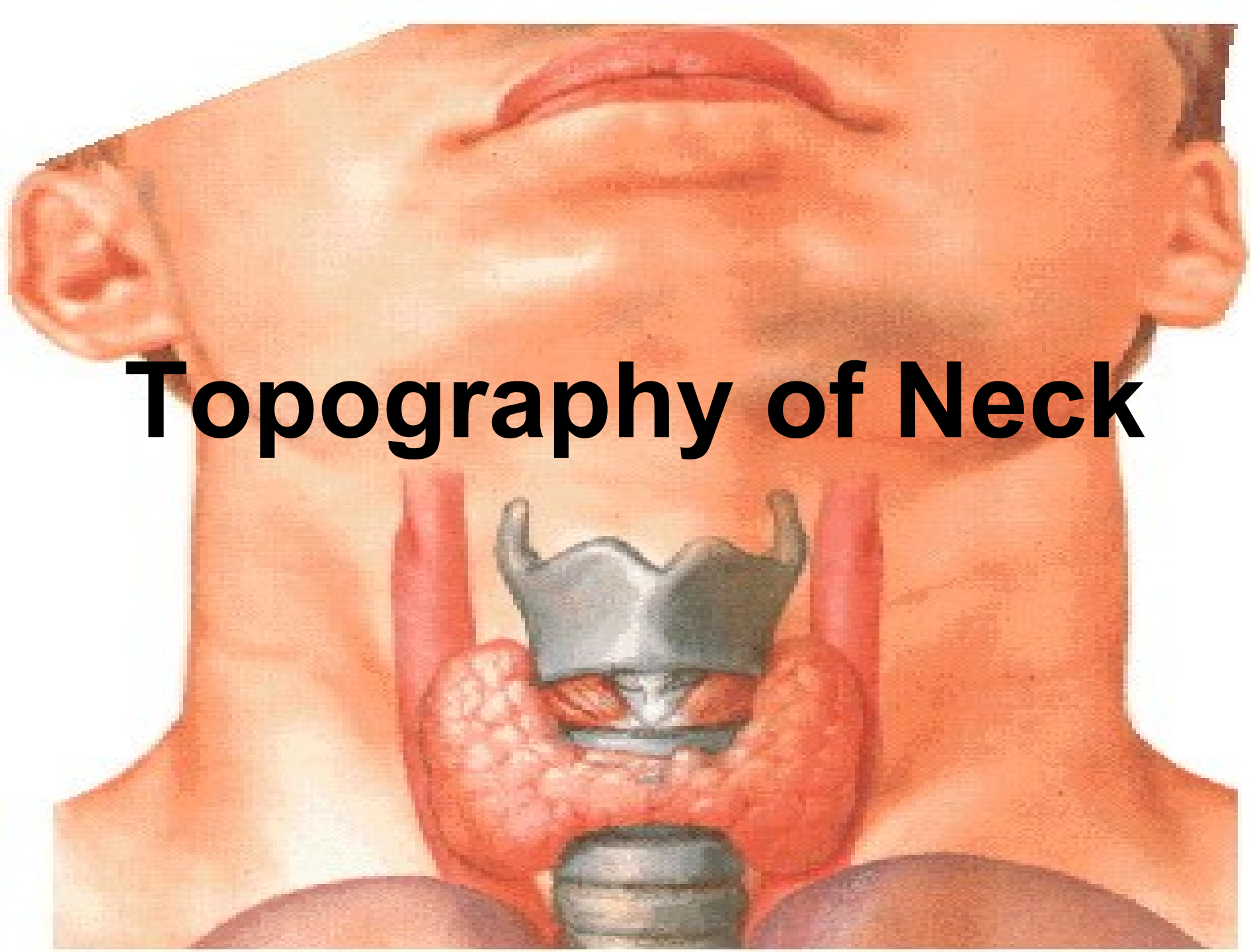


Topography of Neck



ANTERIOR CERVICAL REGION:

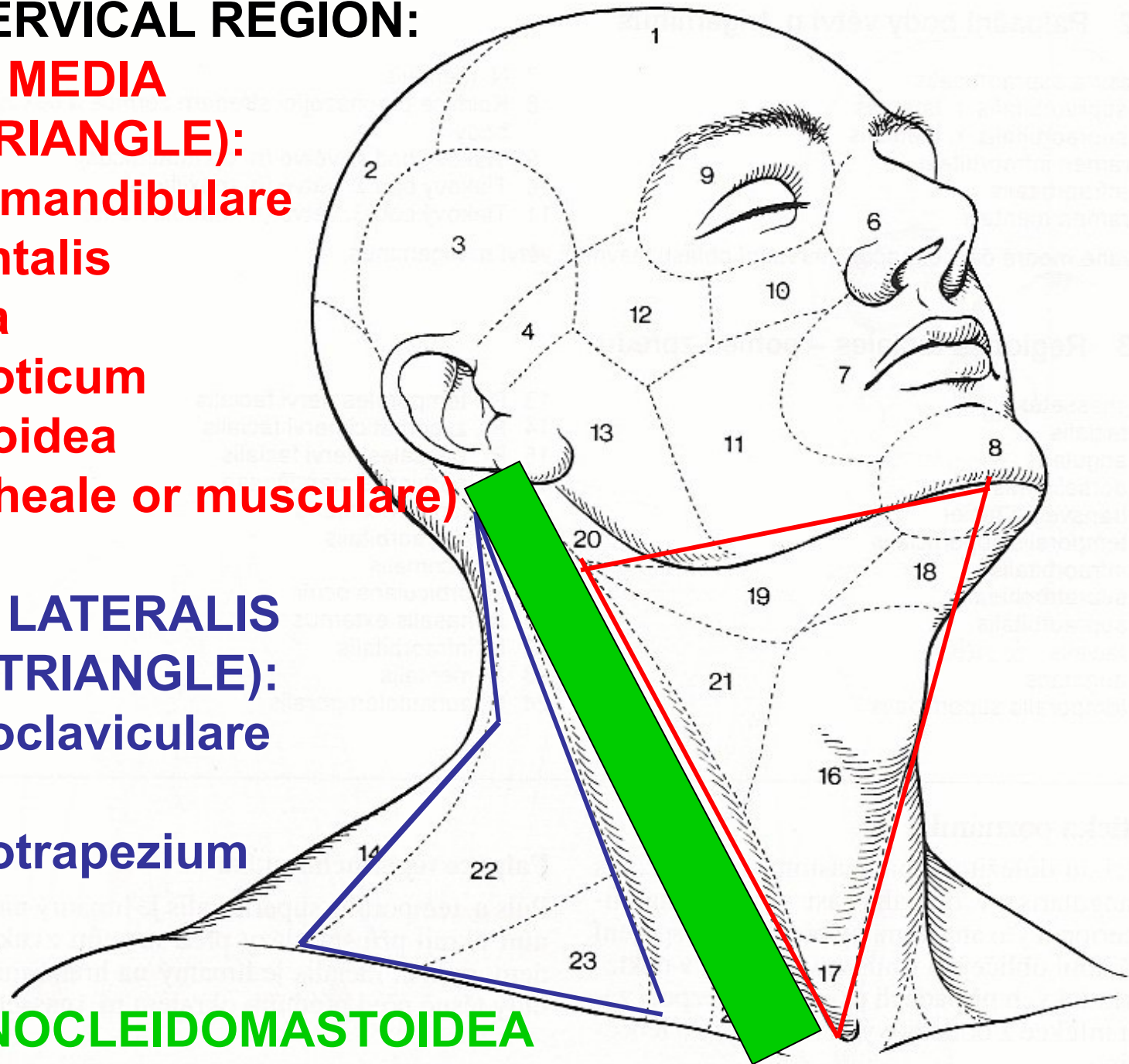
**REGIO COLLI MEDIA
(ANTERIOR TRIANGLE):**

- Trigonum submandibulare
- Regio submentalis
- Regio hyoidea
- Trigonum caroticum
- Regio infrahyoidea
(trig. omotracheale or musculare)

**REGIO COLLI LATERALIS
(POSTERIOR TRIANGLE):**

- Trigonum omoclaviculare
(subclavium)
- Trigonum omotrapezium
(occipitale)

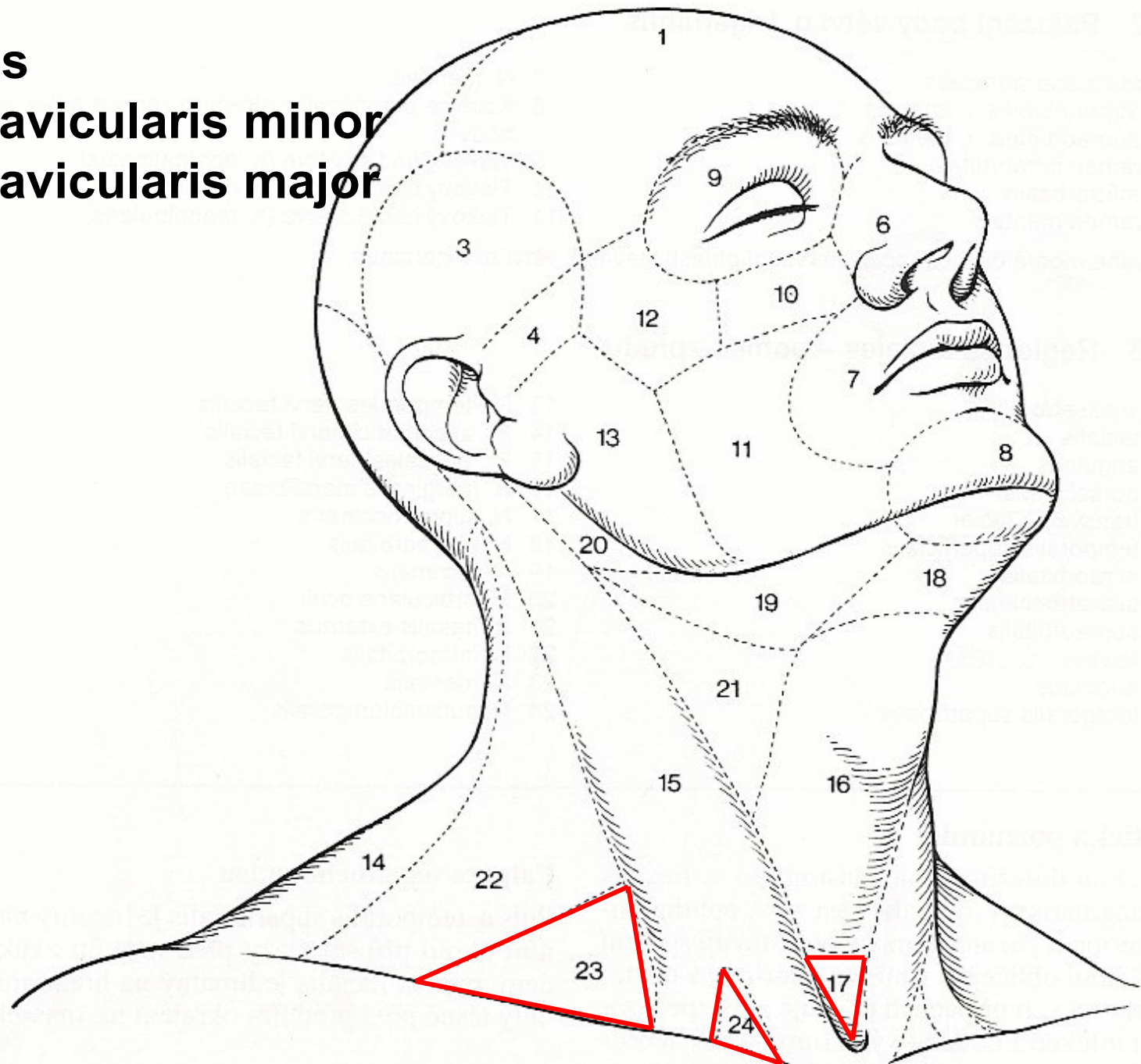
REGIO STERNOCLEIDOMASTOIDEA



Fossa jugularis

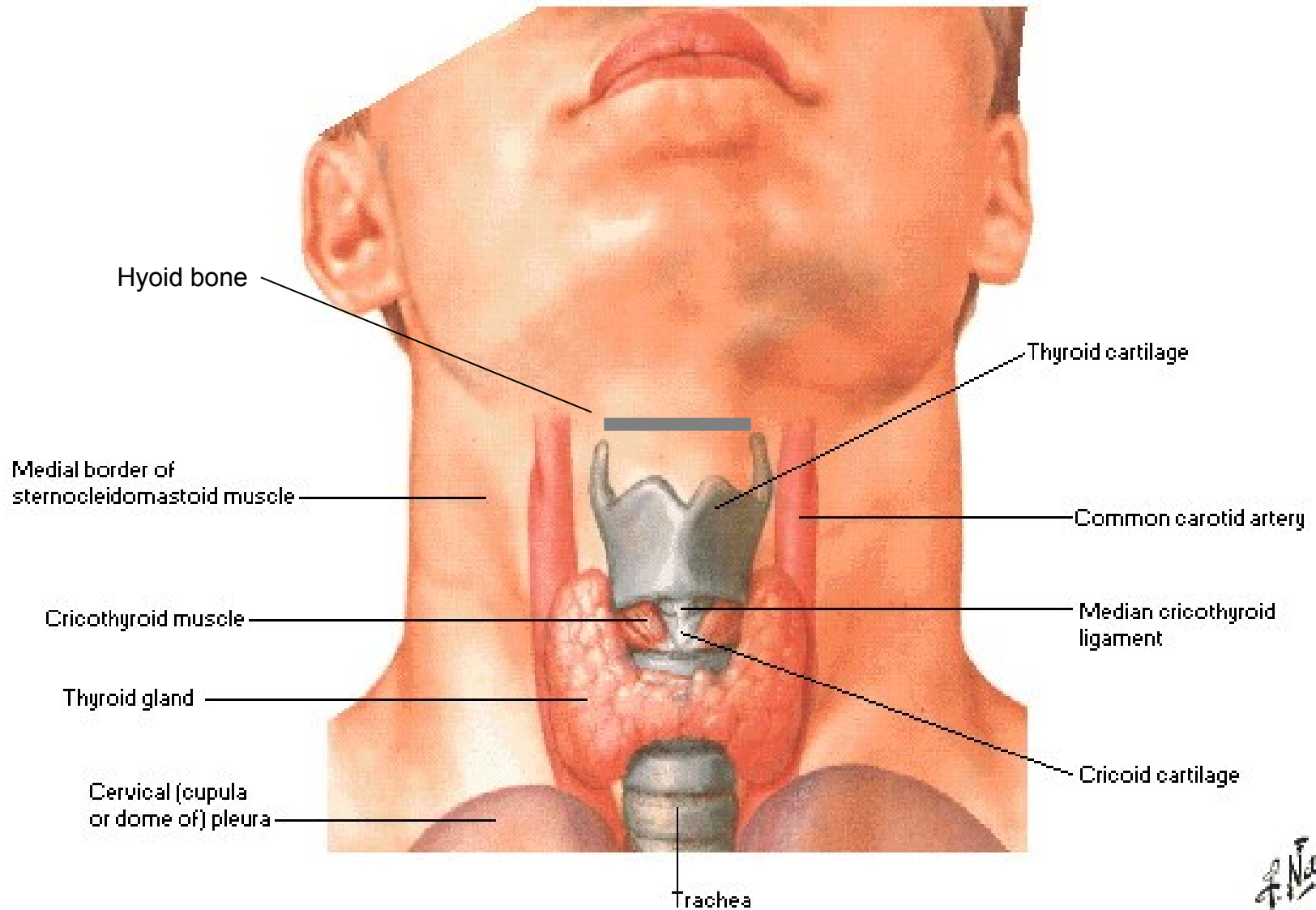
Fossa supraclavicularis minor

Fossa supraclavicularis major



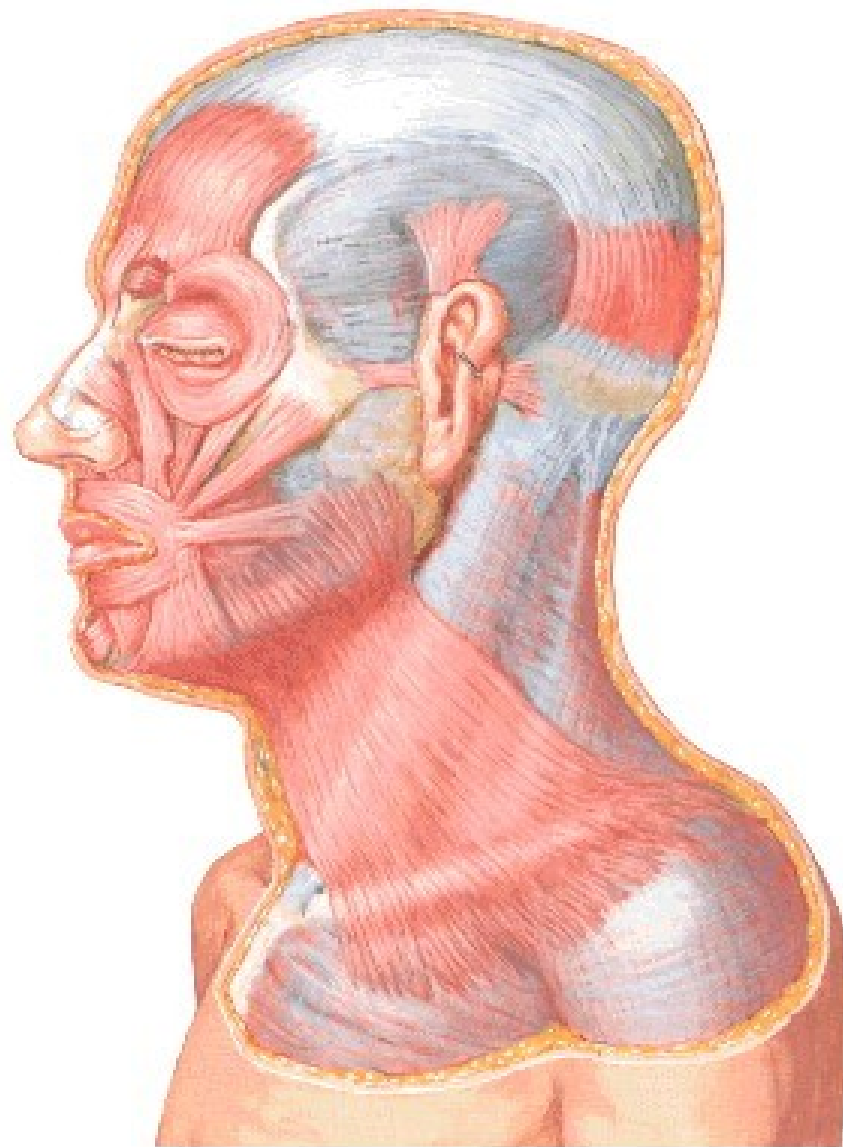
Thyroid Gland in Situ

Anterior View



Muscles of Facial Expression

Lateral View



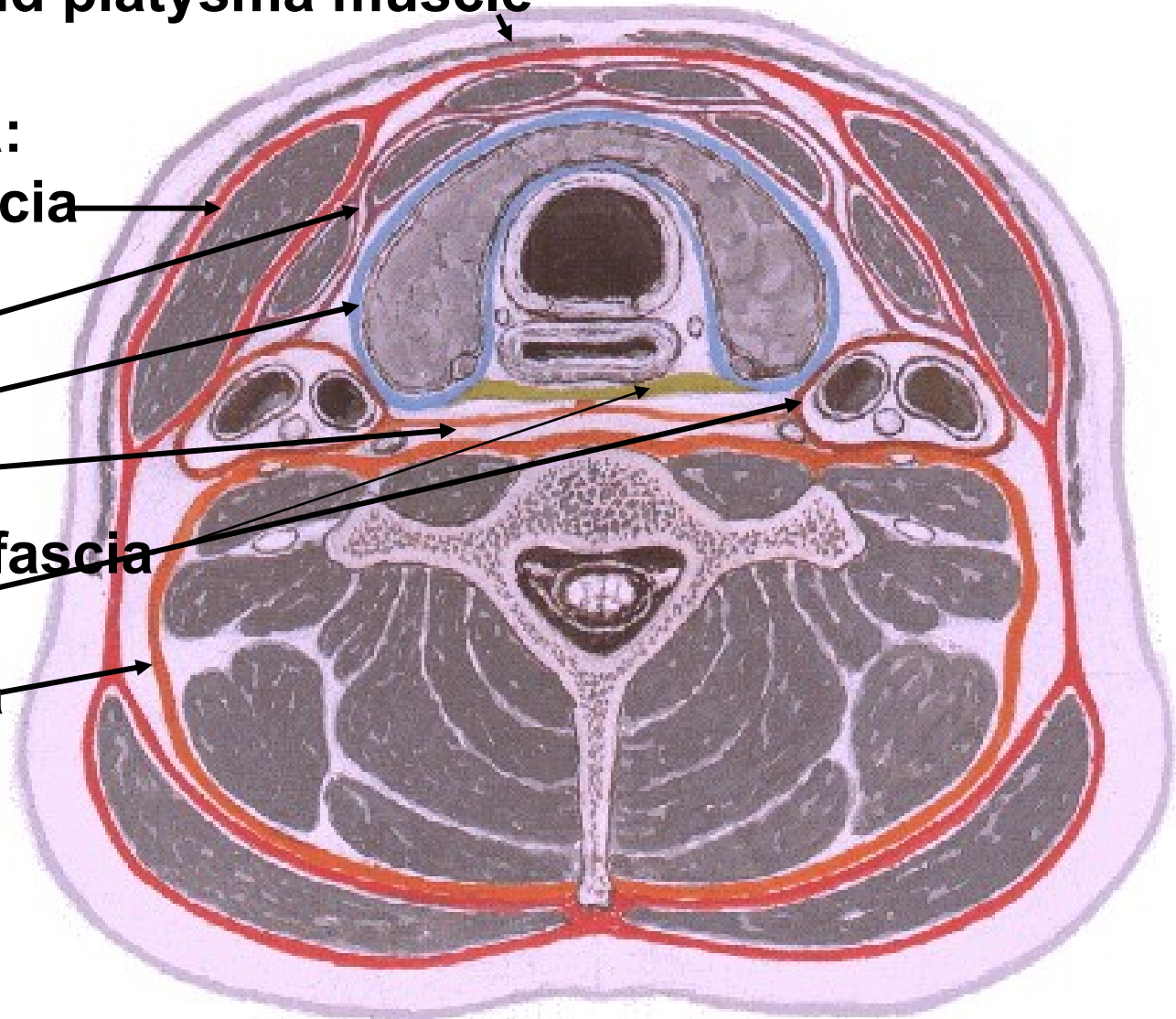
Fascial Layers of Neck

Cross Section

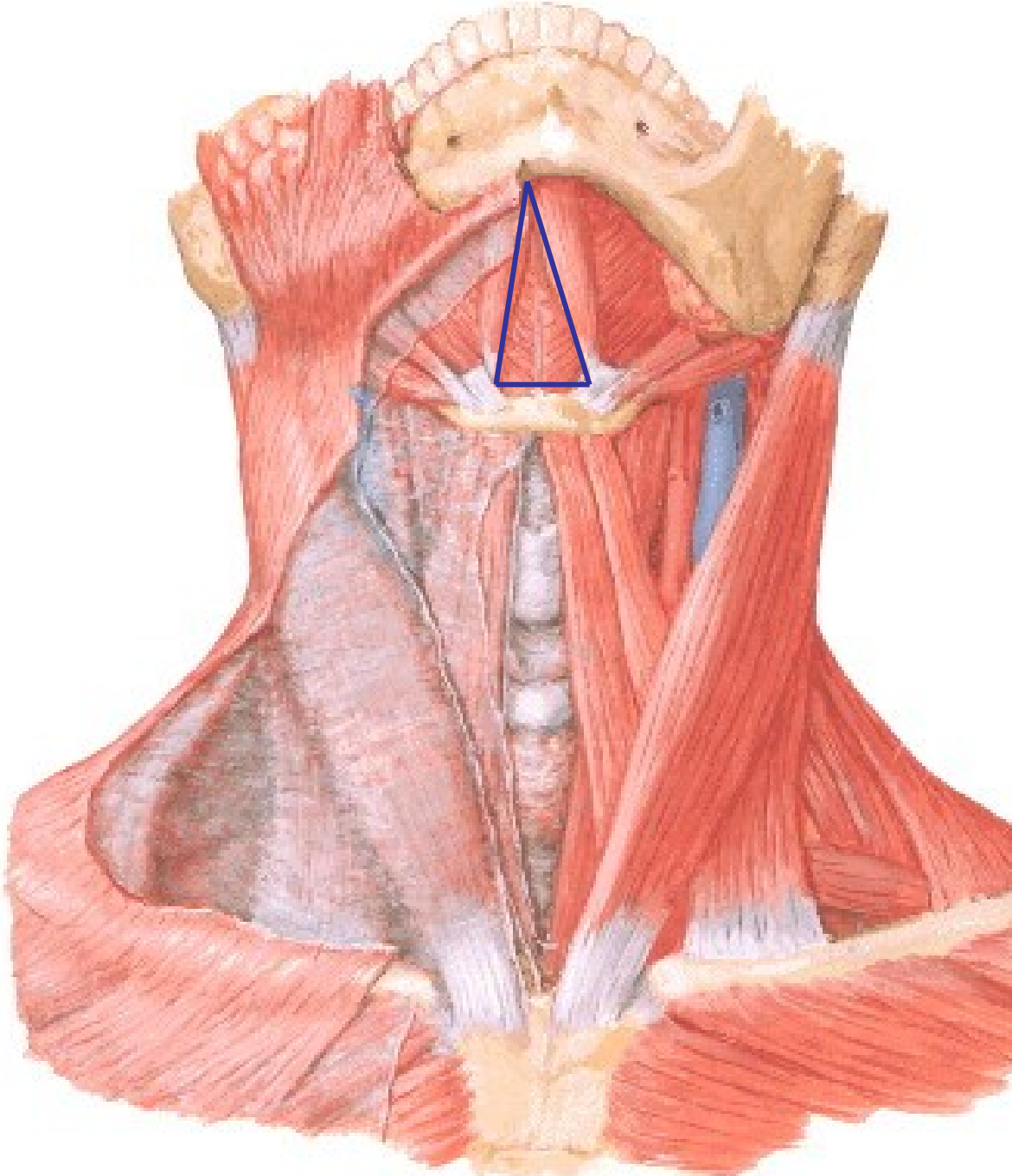
Superficial fascia and platysma muscle

Deep cervical fascia:

- Deep investing fascia
- Pretracheal fascia
(muscular layer,
visceral layer)
- Alar fascia
- Buccopharyngeal fascia
- Carotid sheath
- Prevertebral fascia

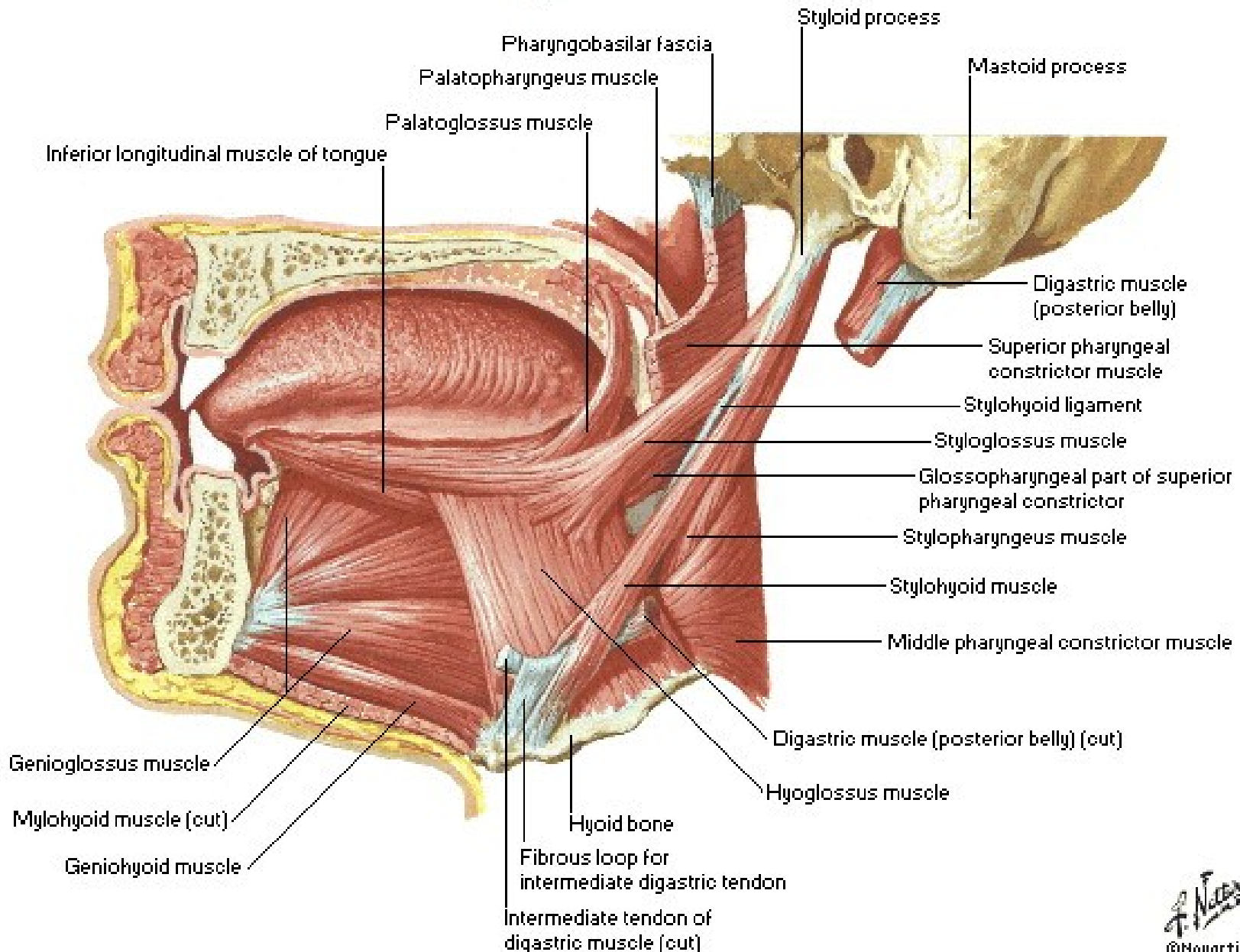


Regio submentalis



Muscles of Tongue

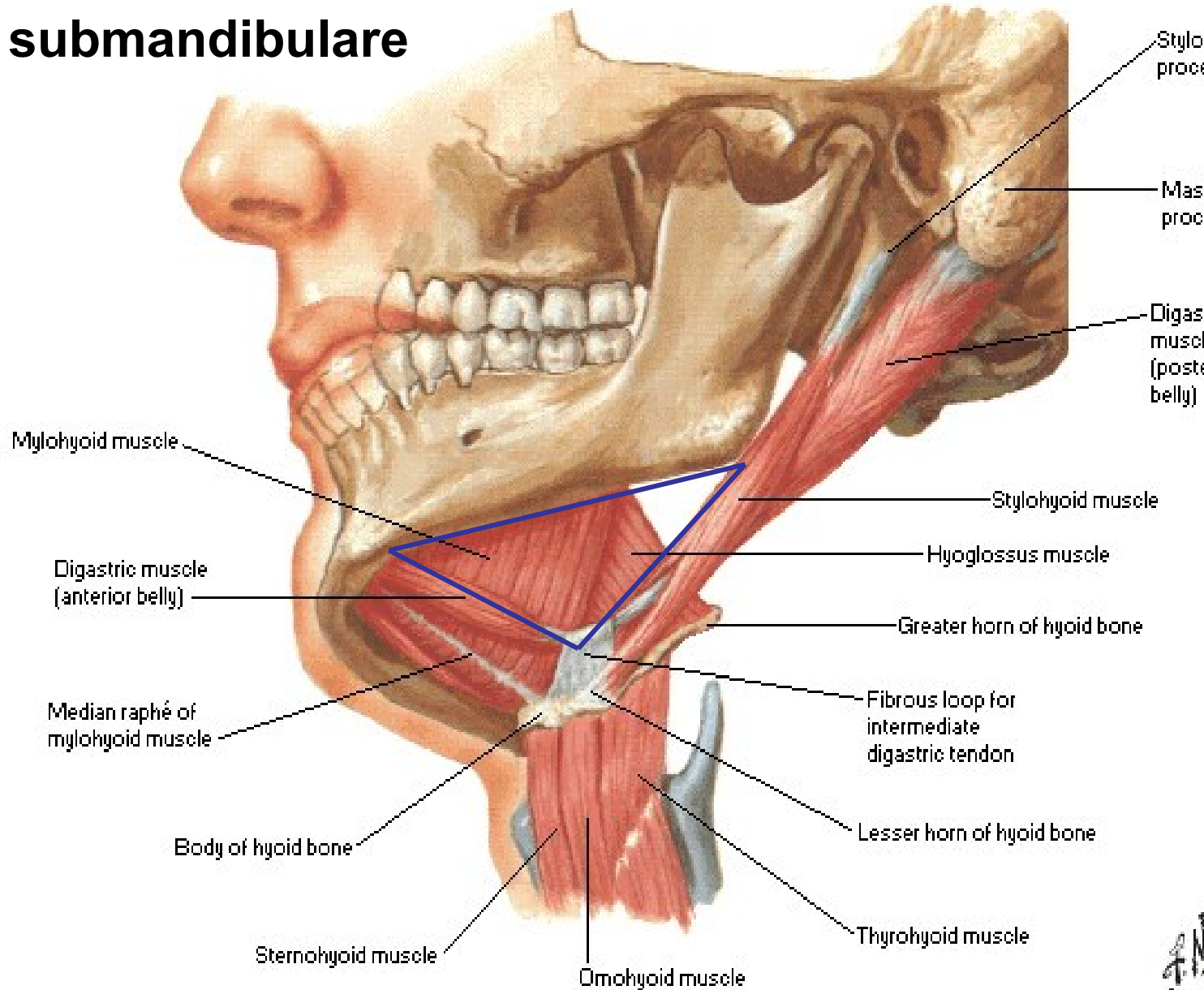
Sagittal Section



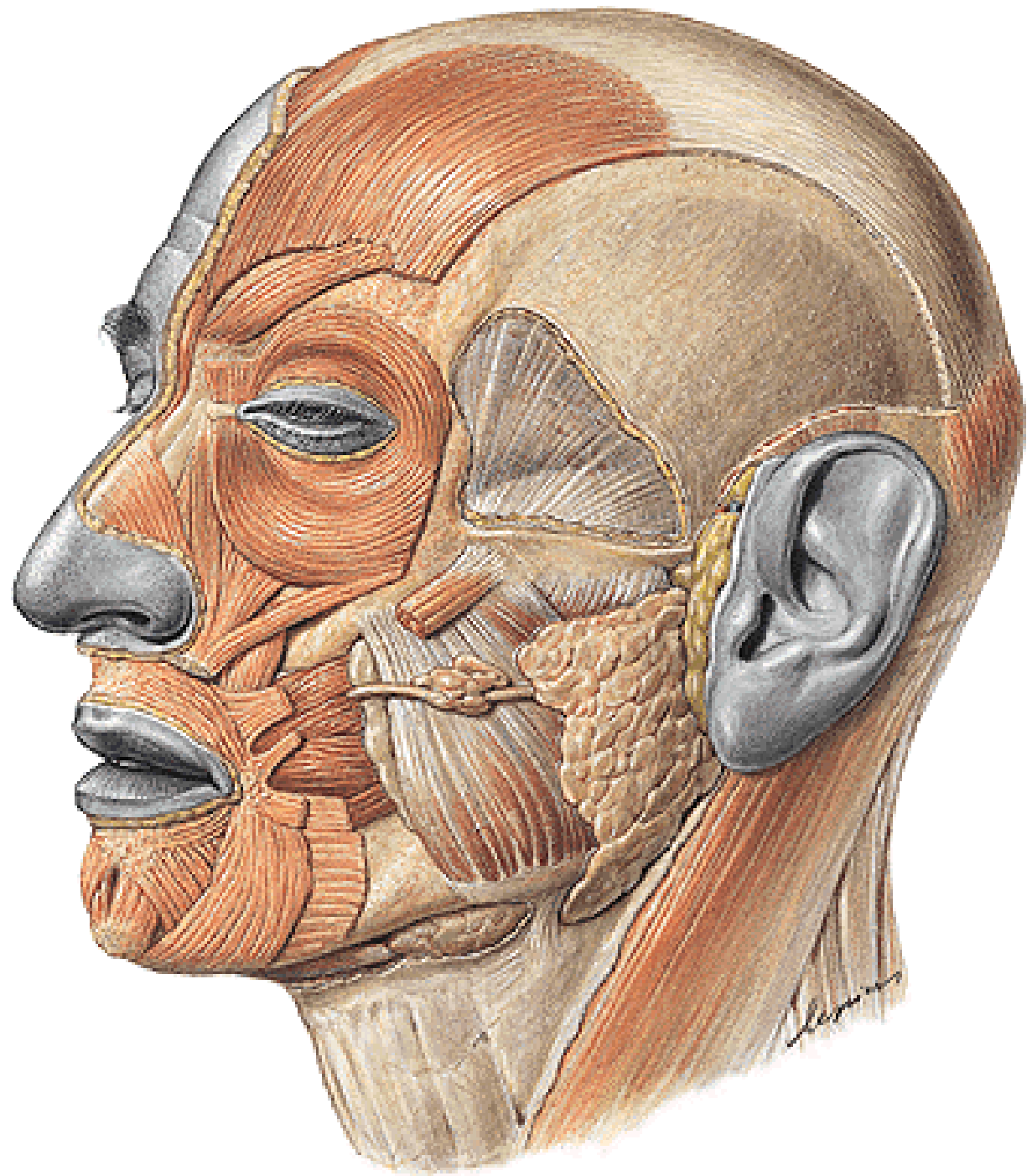
Floor of Mouth - Musculature

Lateral, Slightly Inferior View

Trigonum submandibulare

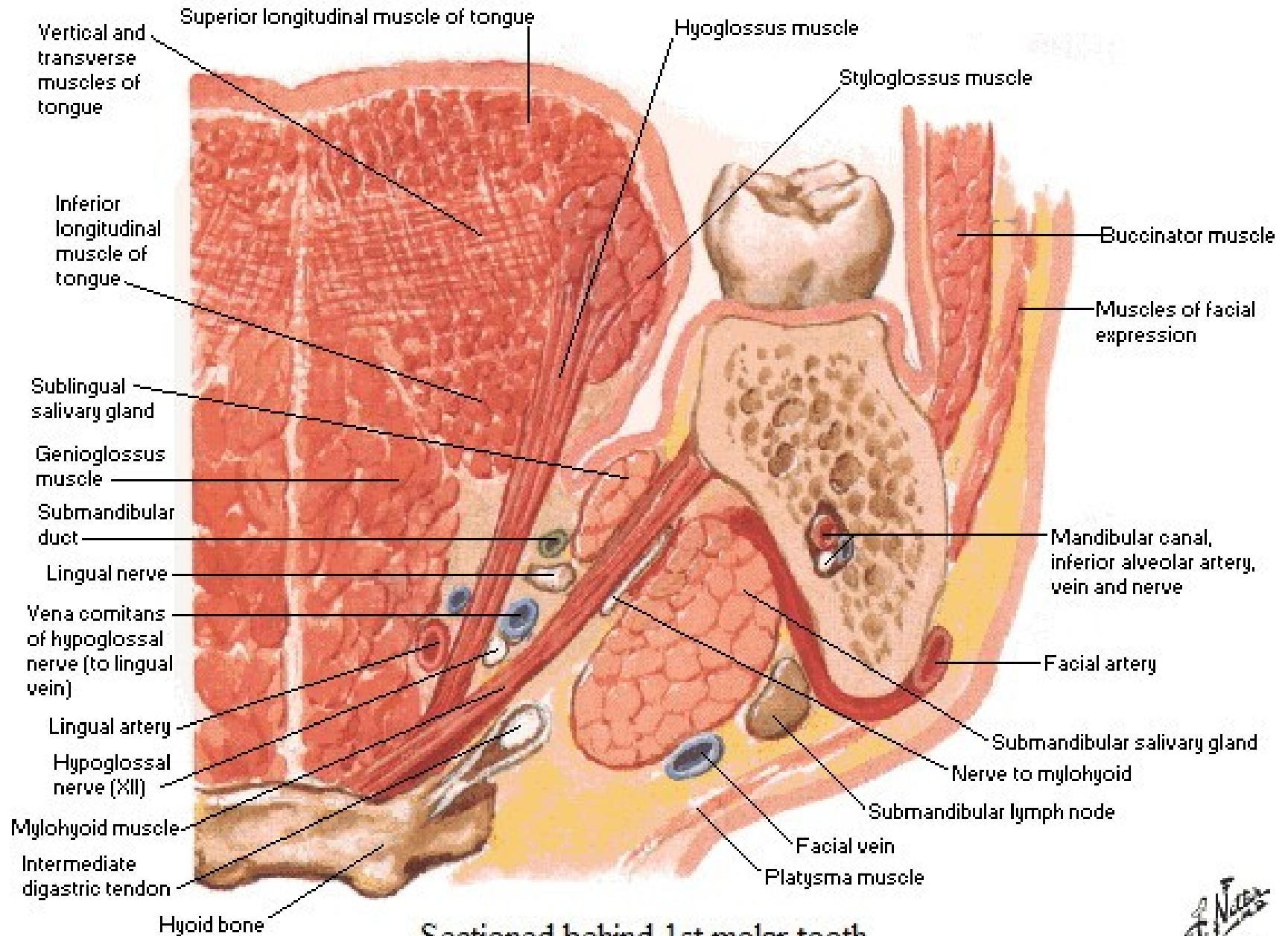


Tractus angularis



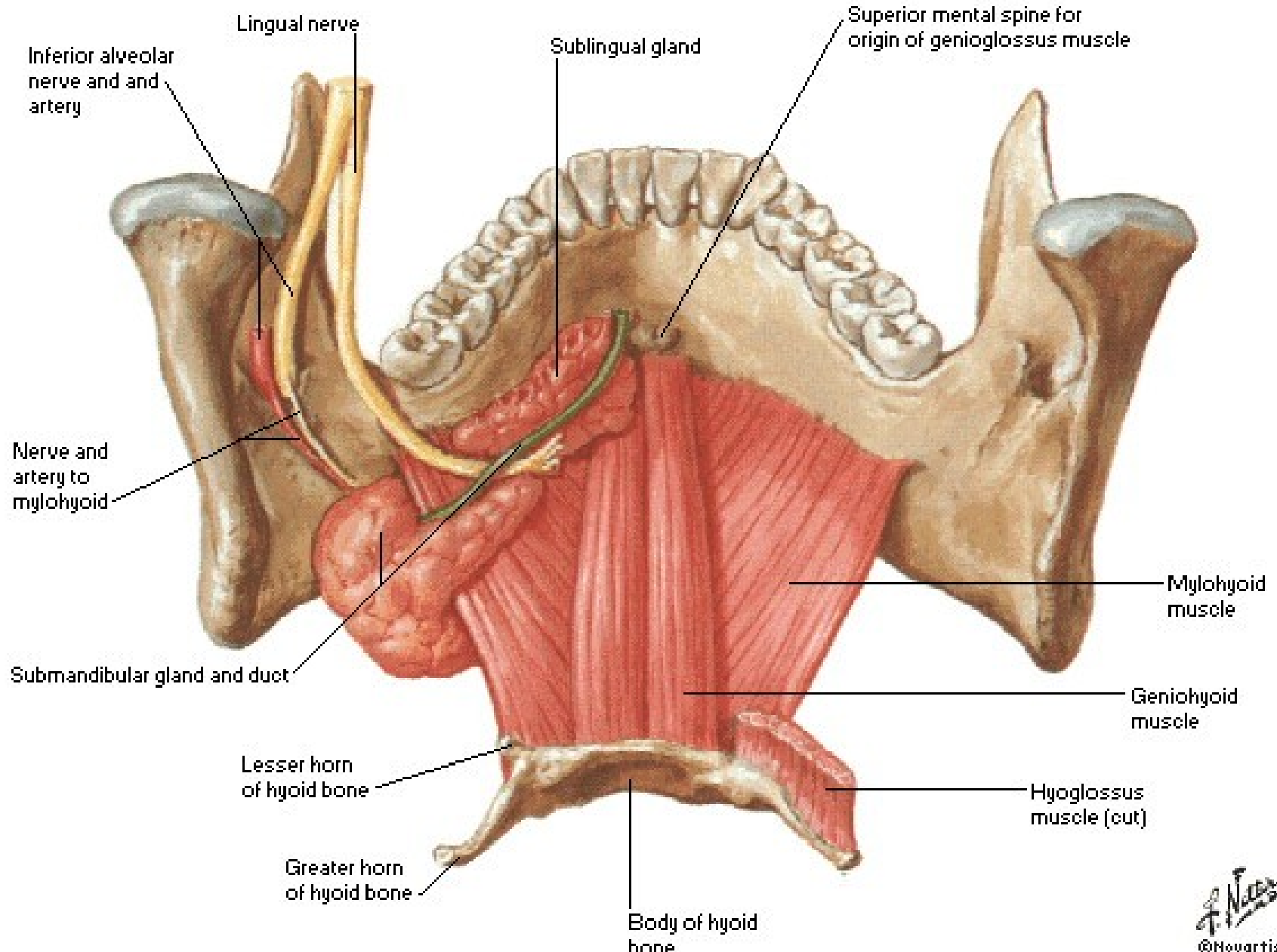
Tongue and Mouth

Frontal Section - Anterior View

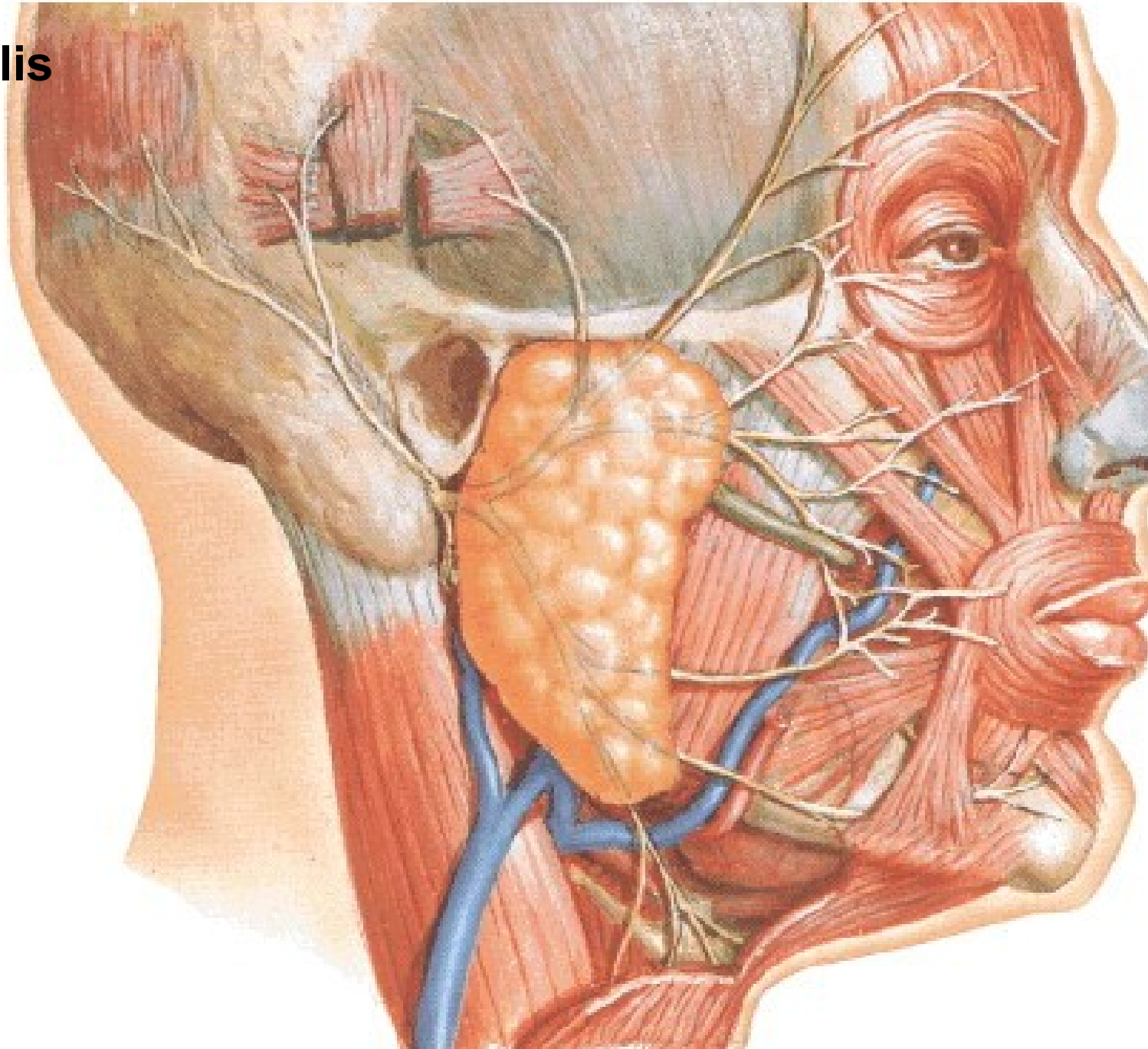


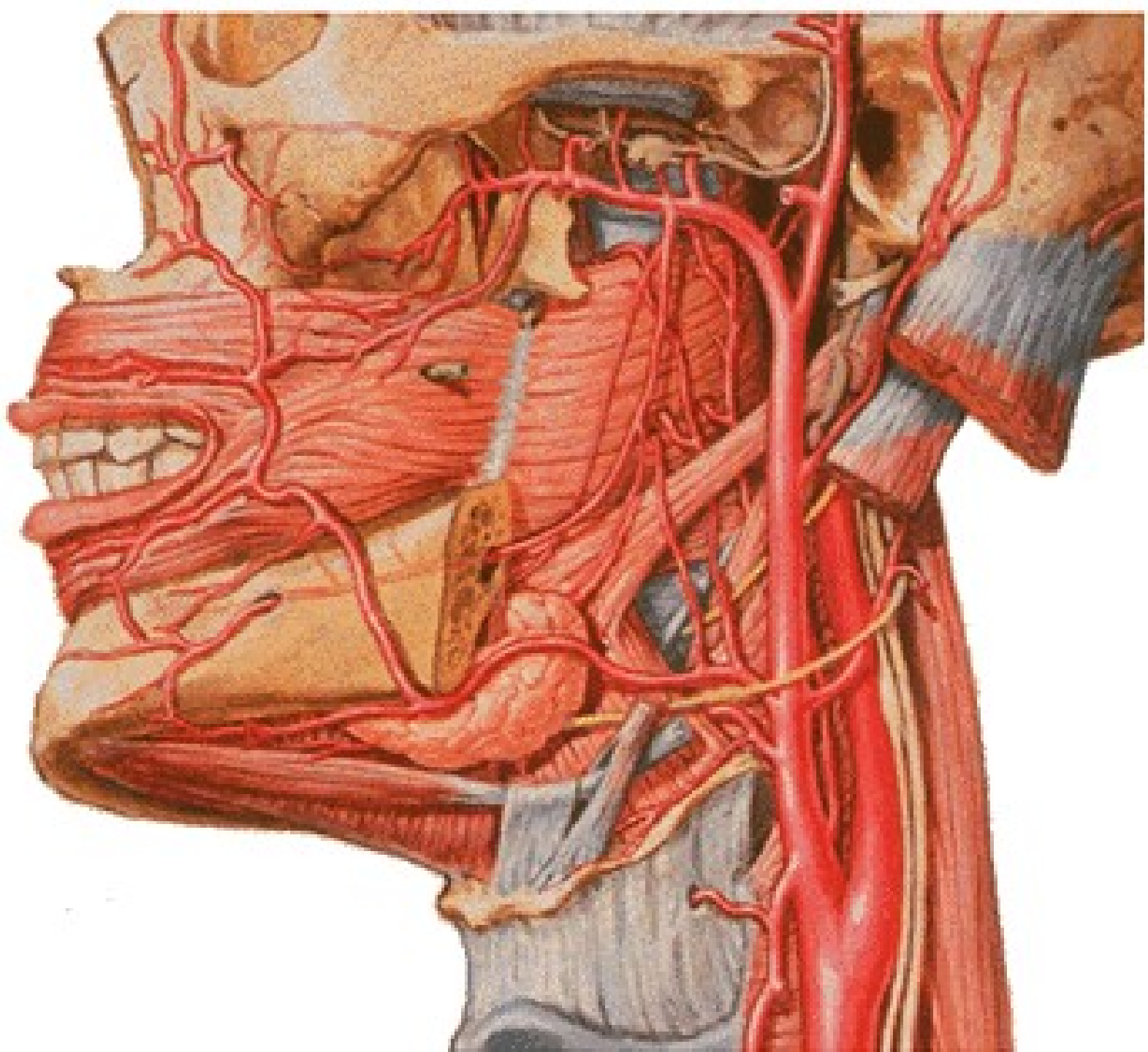
Floor of Mouth - Musculature

Posterosuperior View

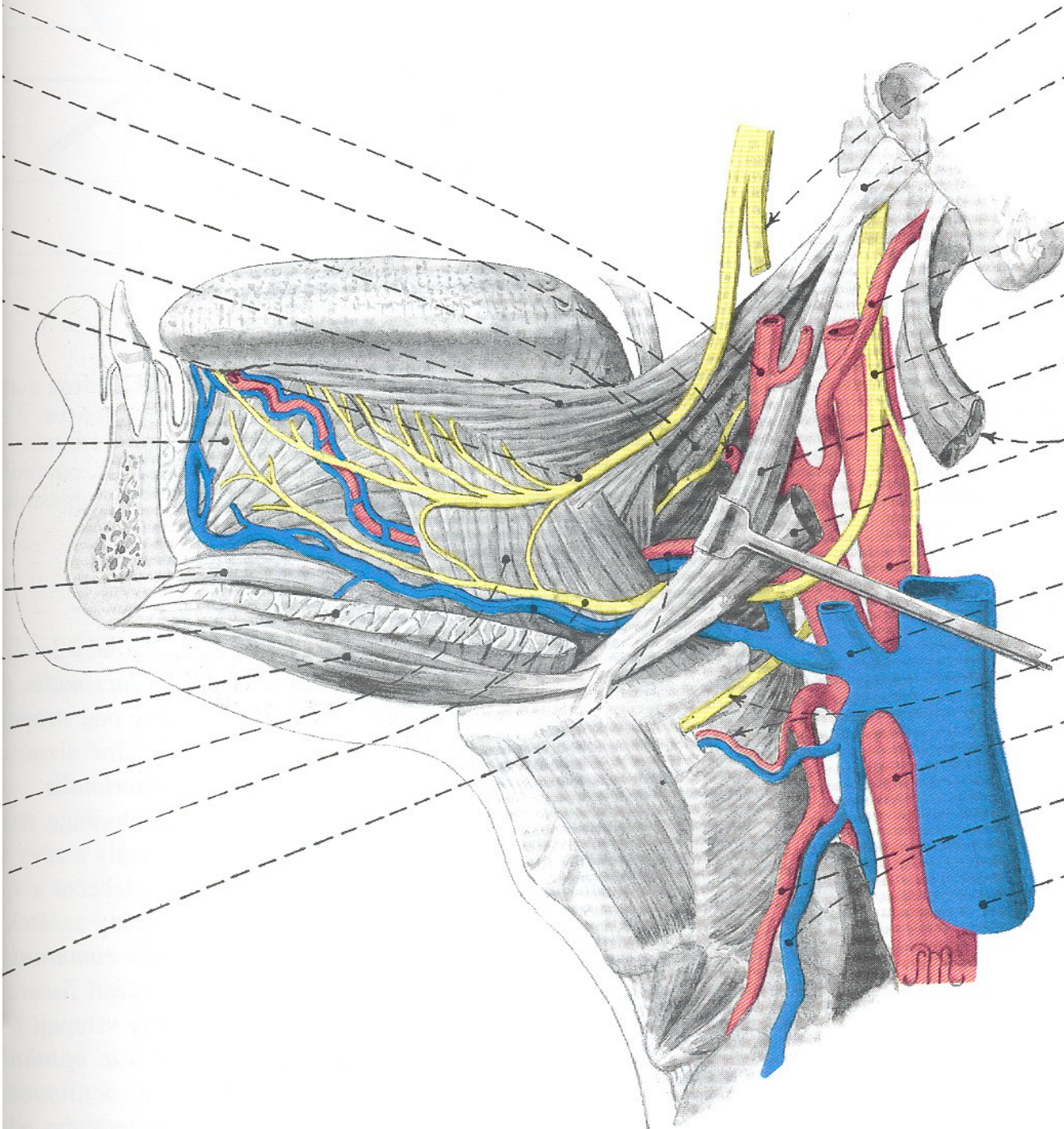


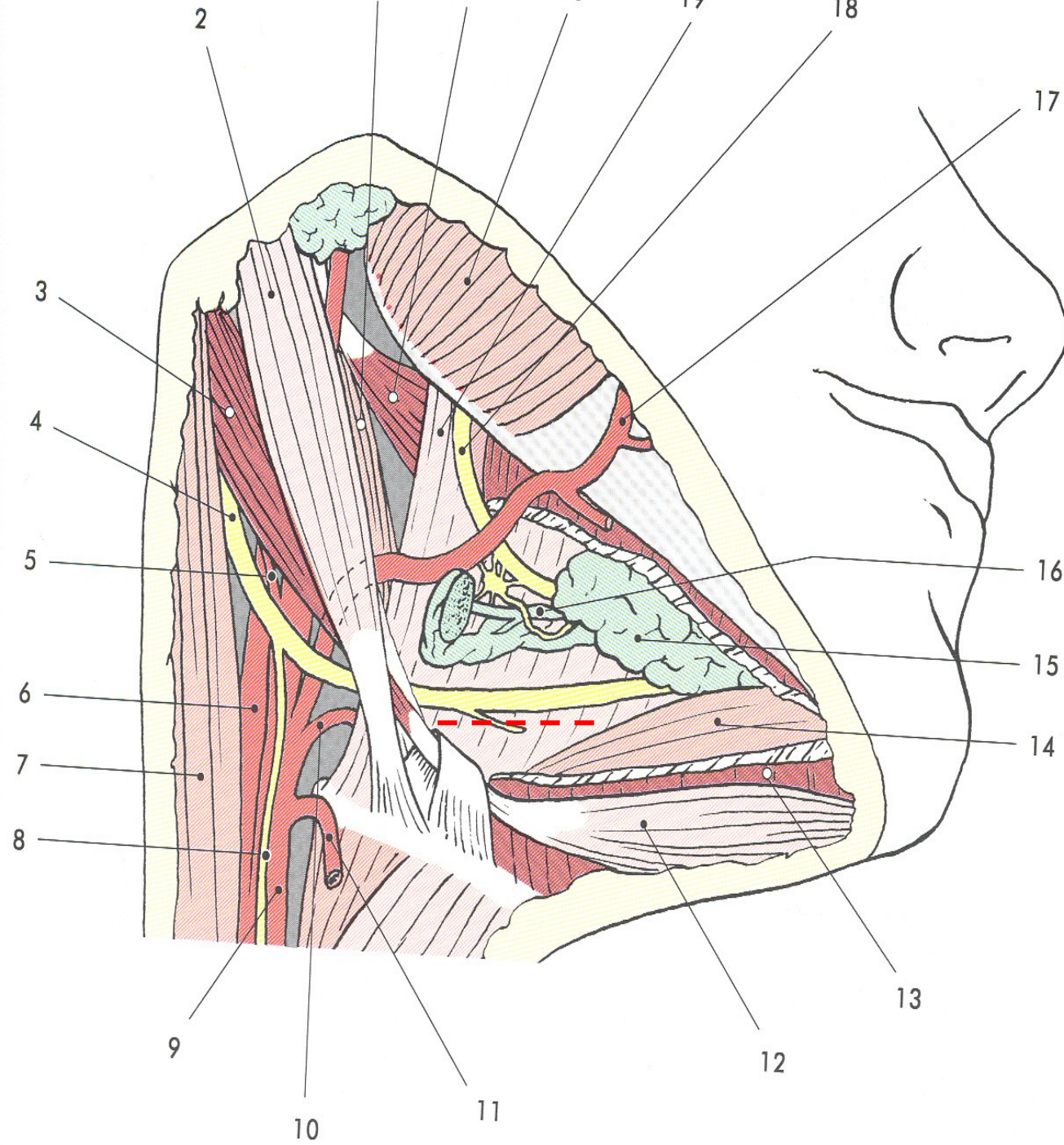
A. et v. facialis





N. hypoglossus
N. lingualis



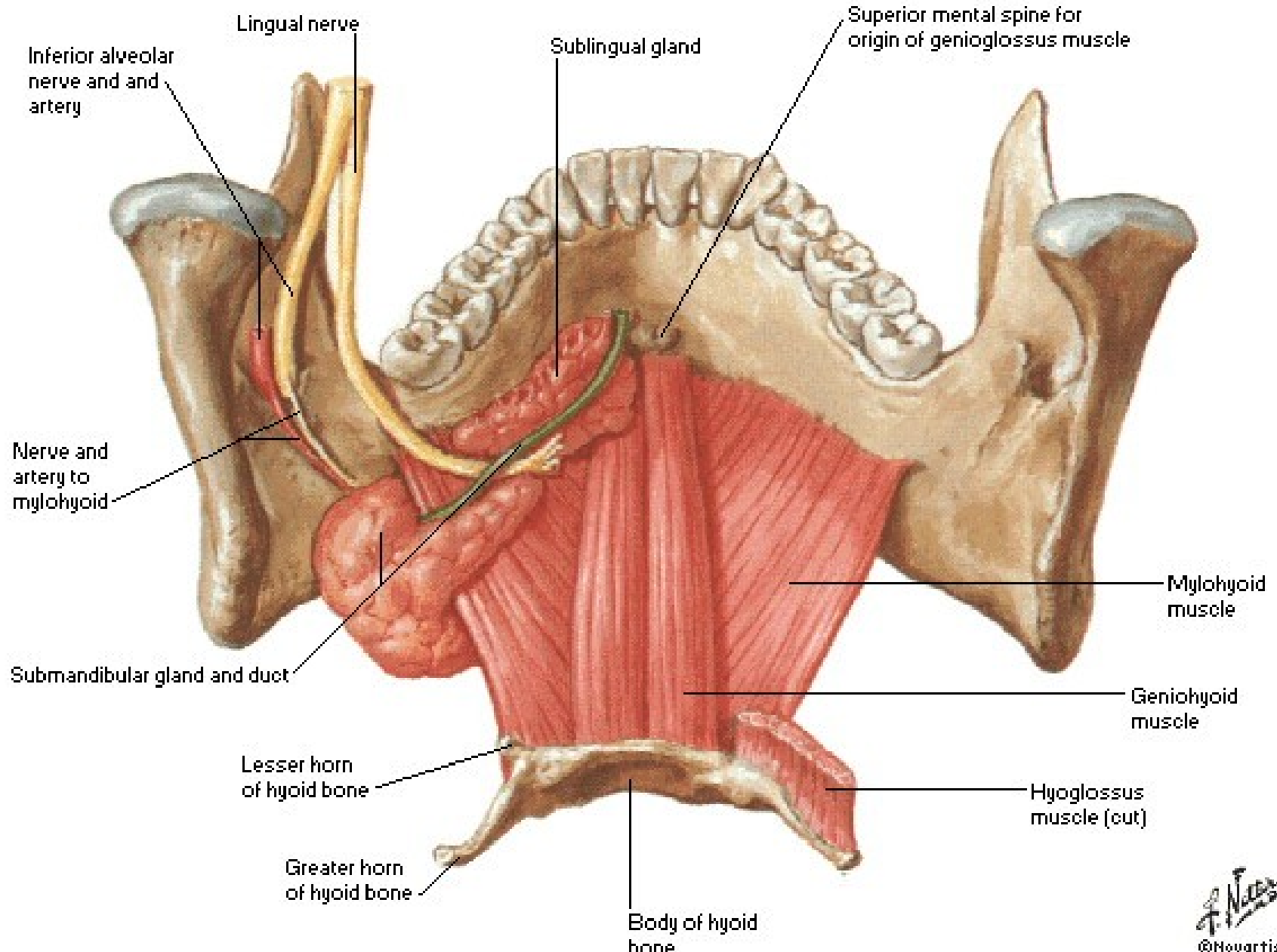


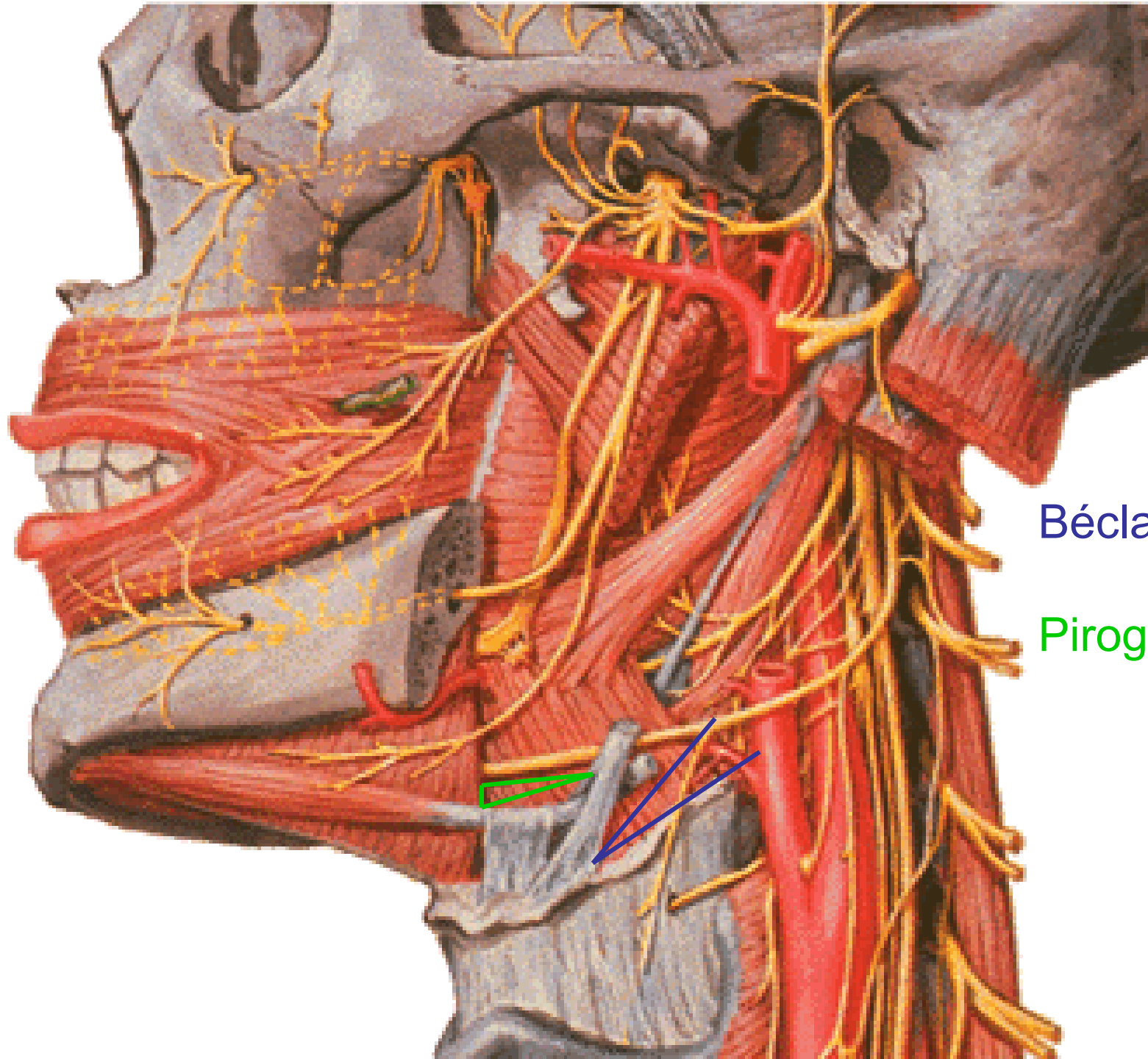
Béclard's angle

Pirogov's triangle

Floor of Mouth - Musculature

Posterosuperior View



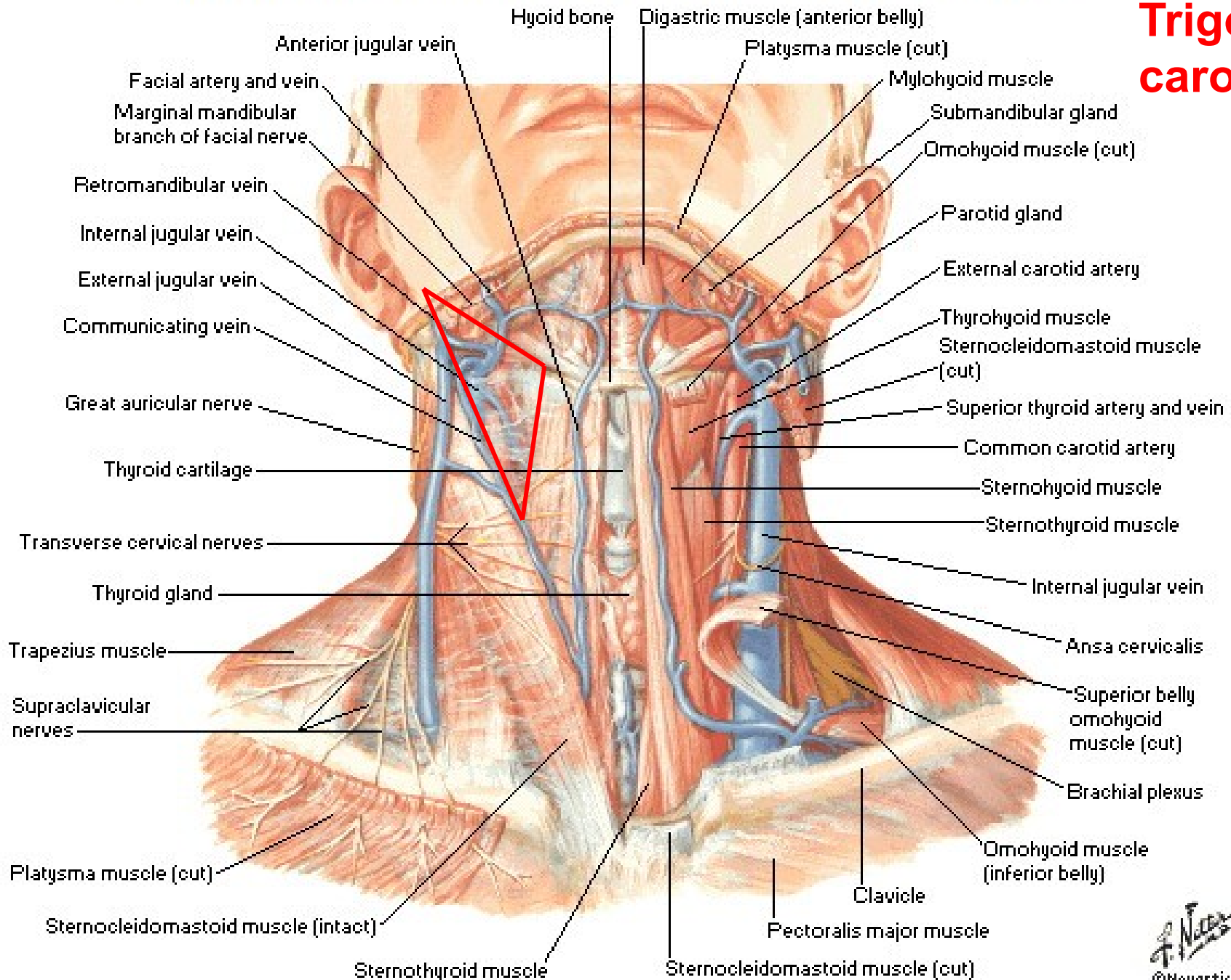


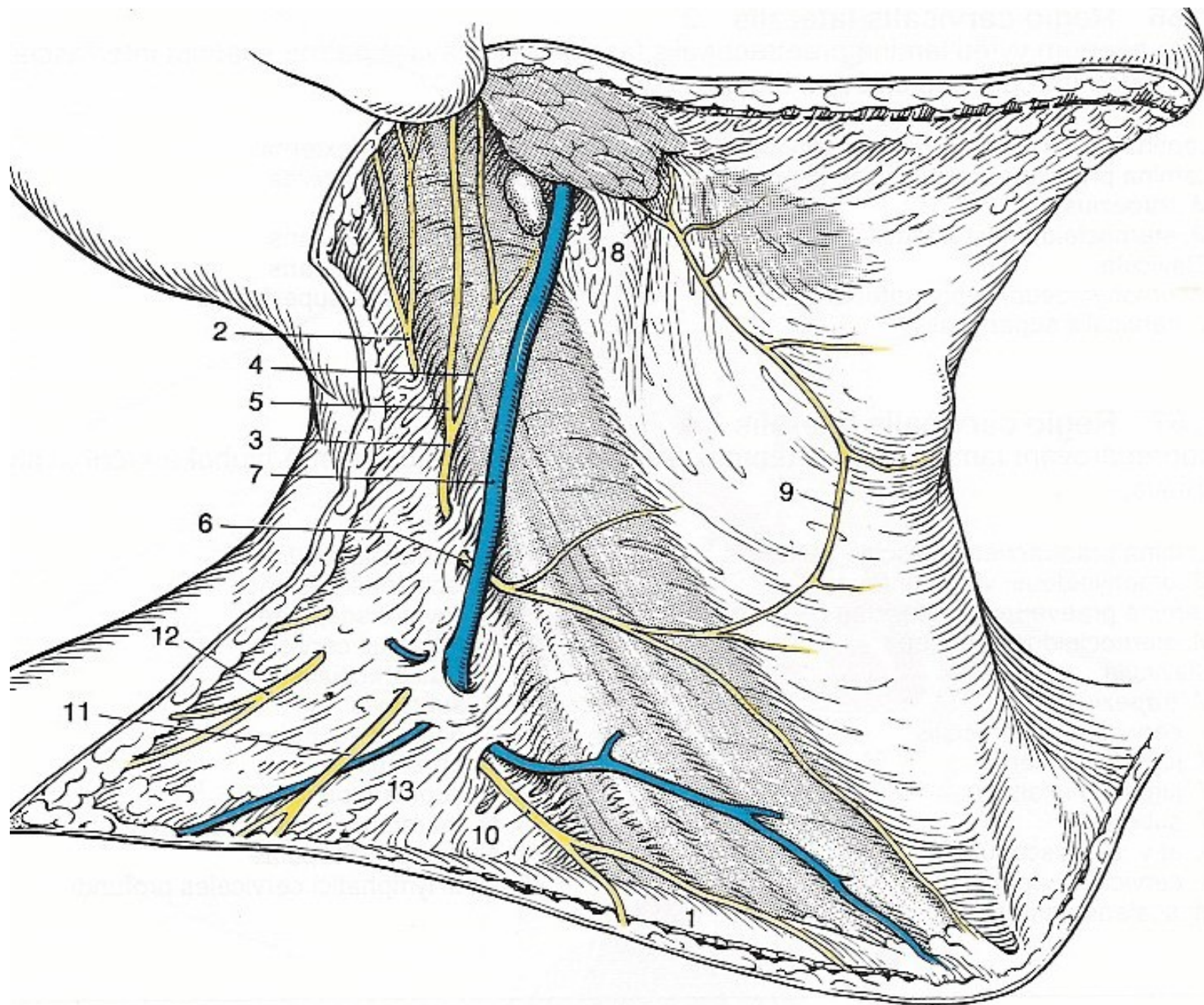
Béclard's angle

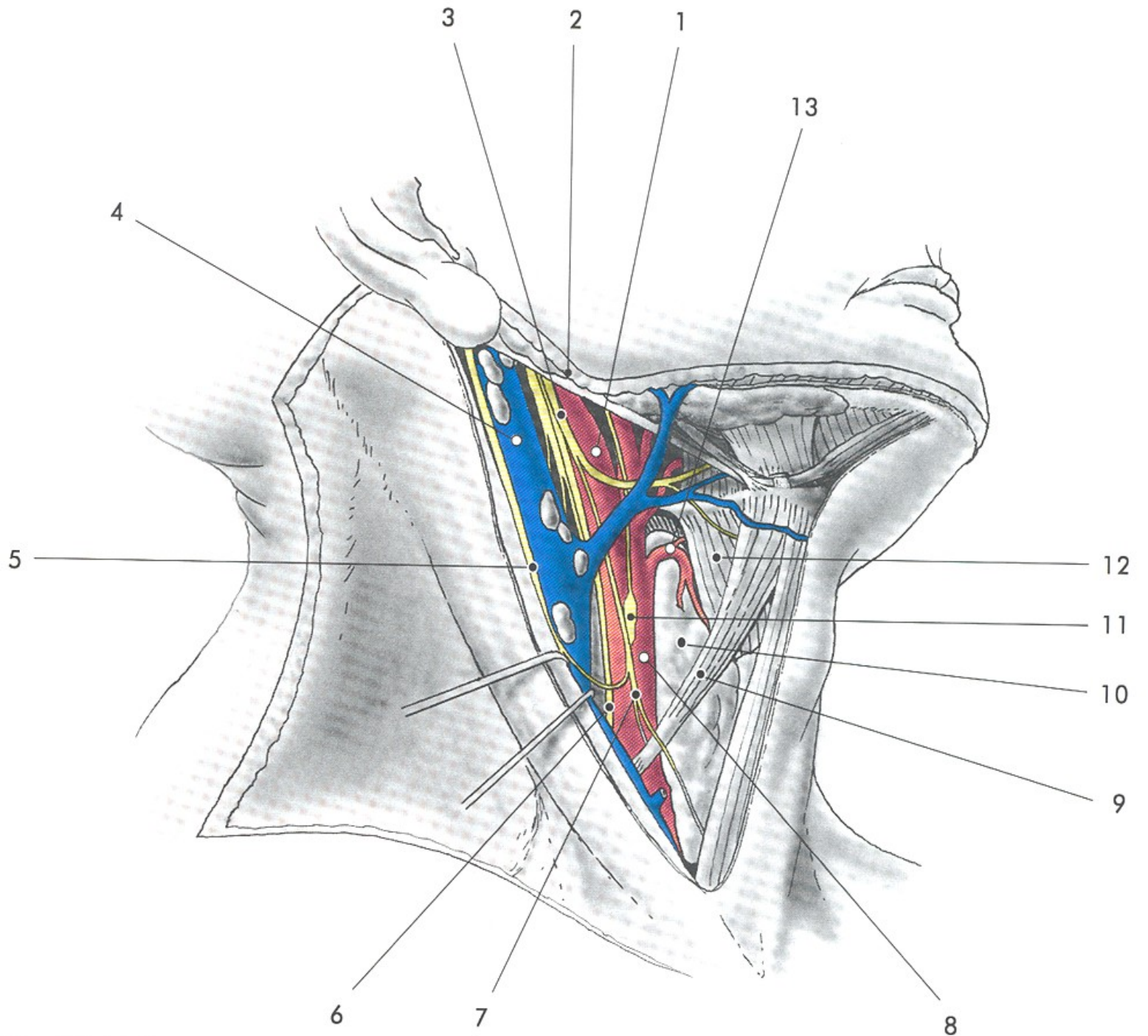
Pirogov's tringle

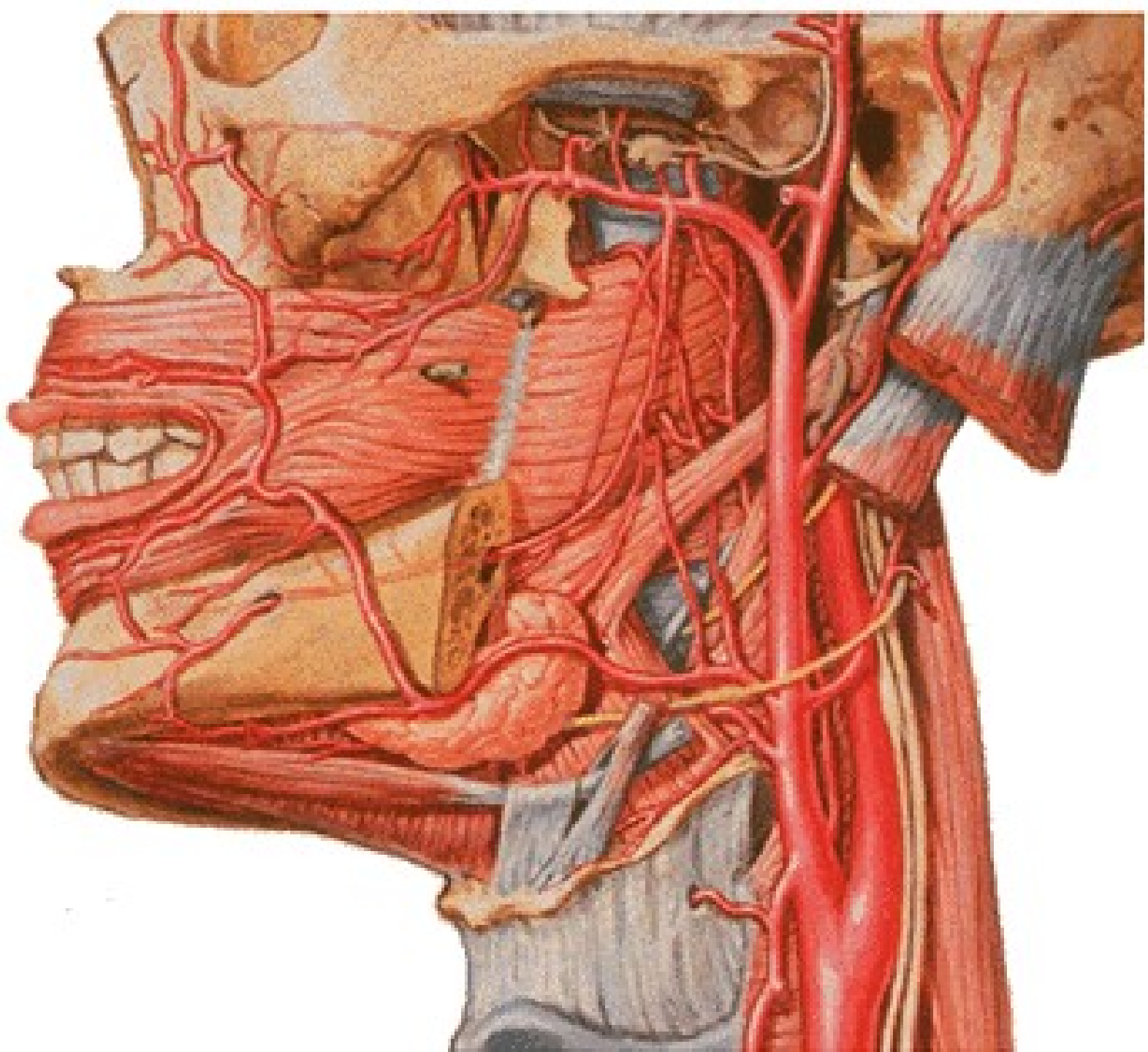
Superficial Veins and Cutaneous Nerves of Neck

Trigonum caroticum

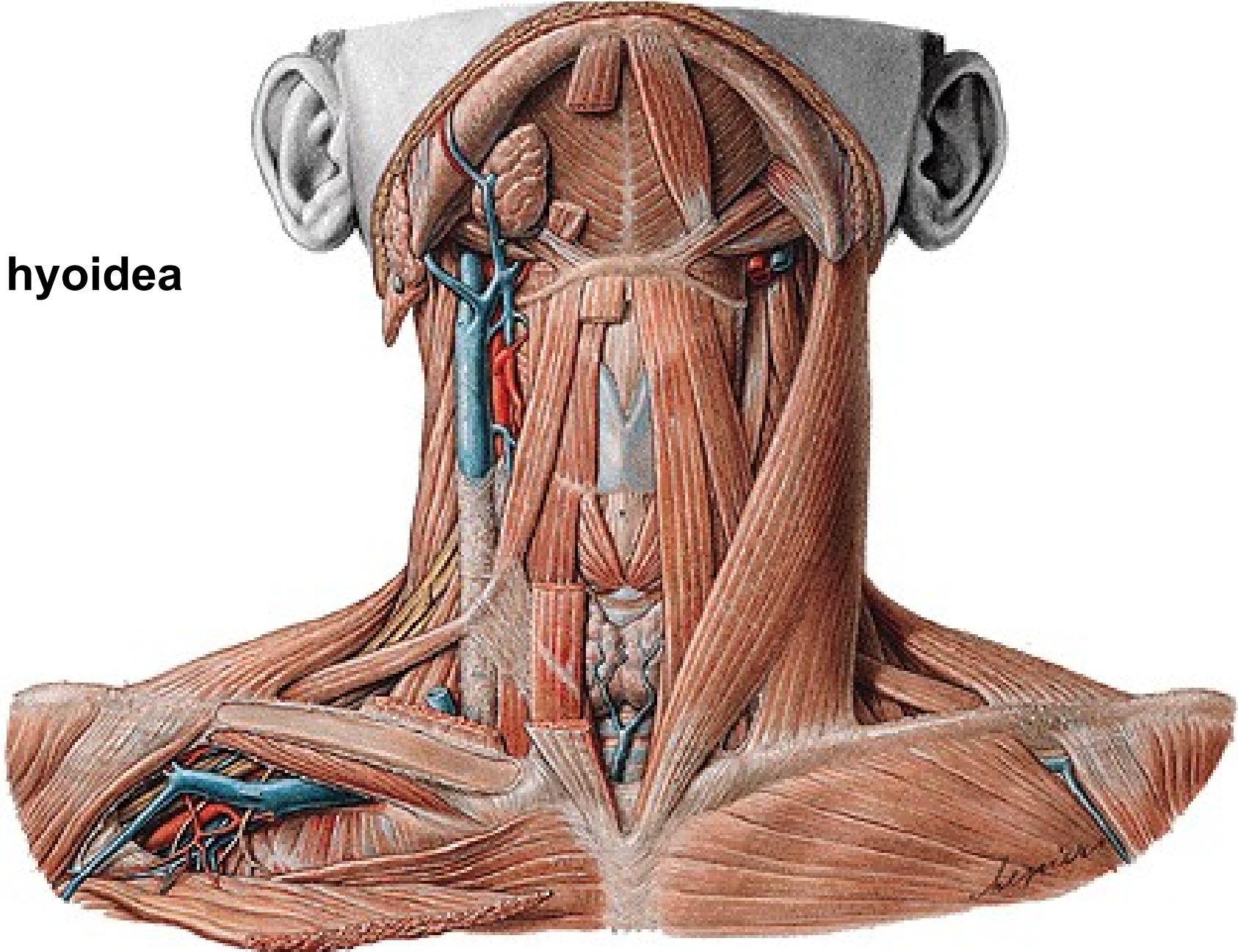




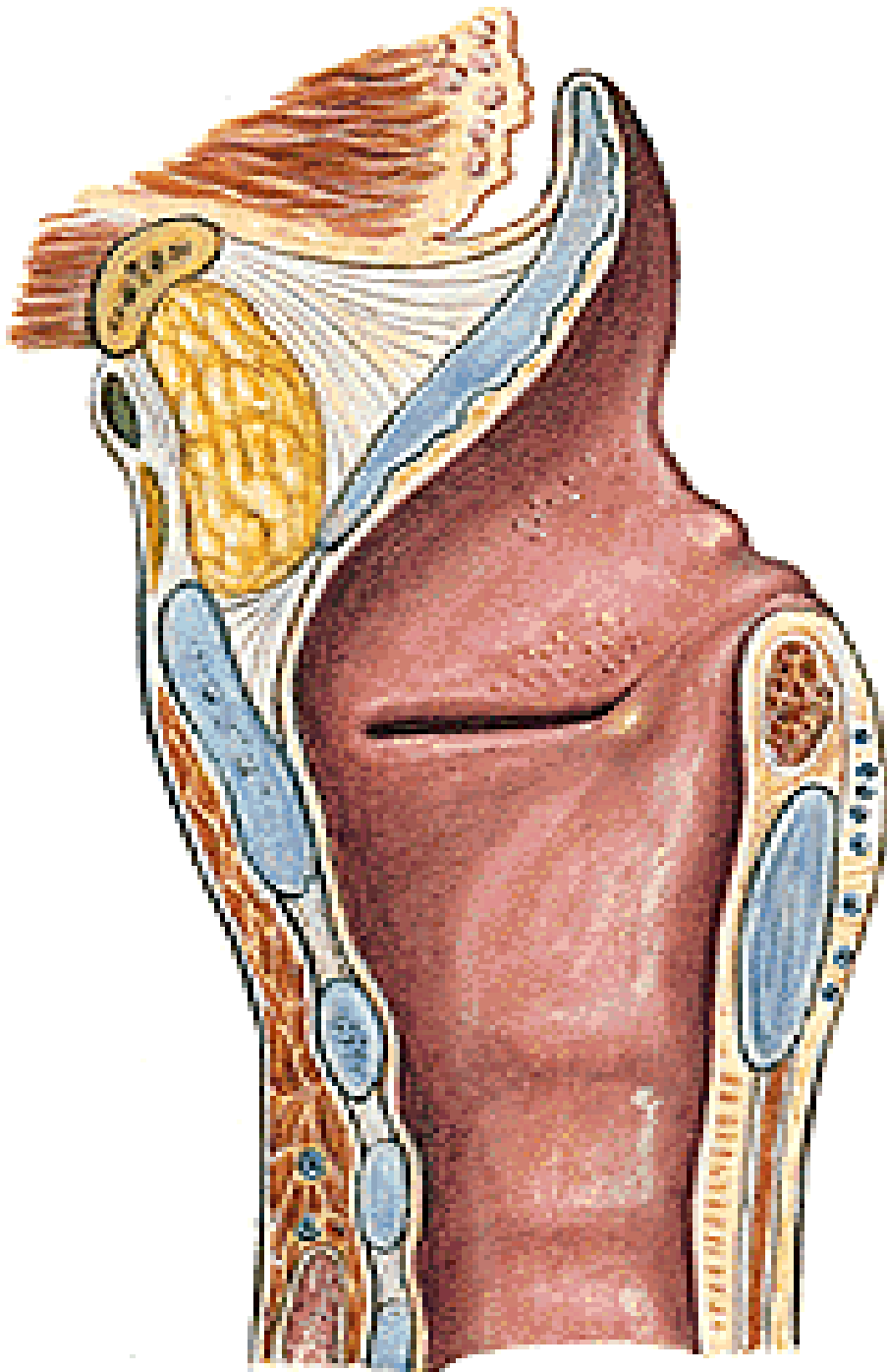




Regio hyoidea

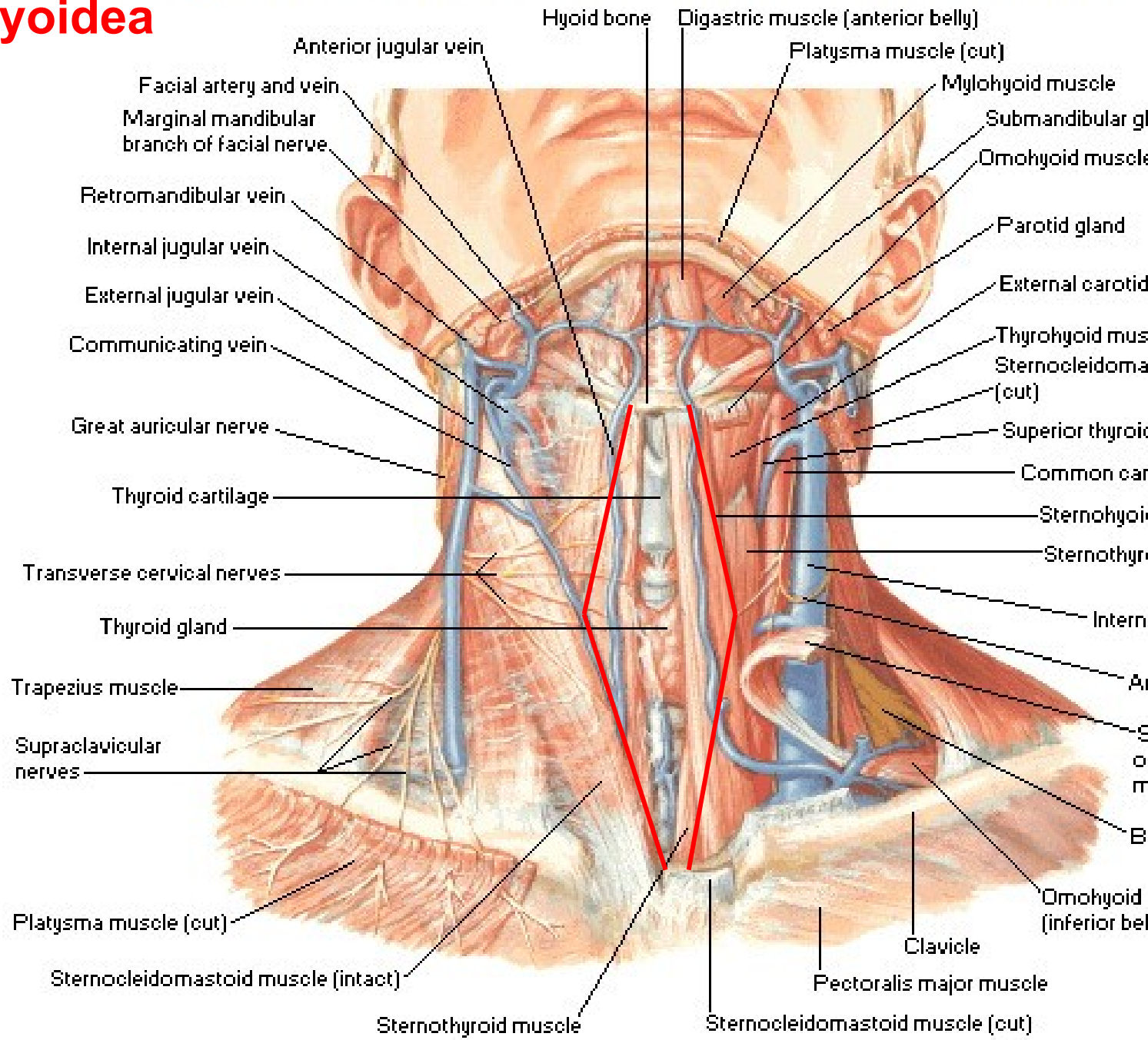


Spatium preepiglotticum



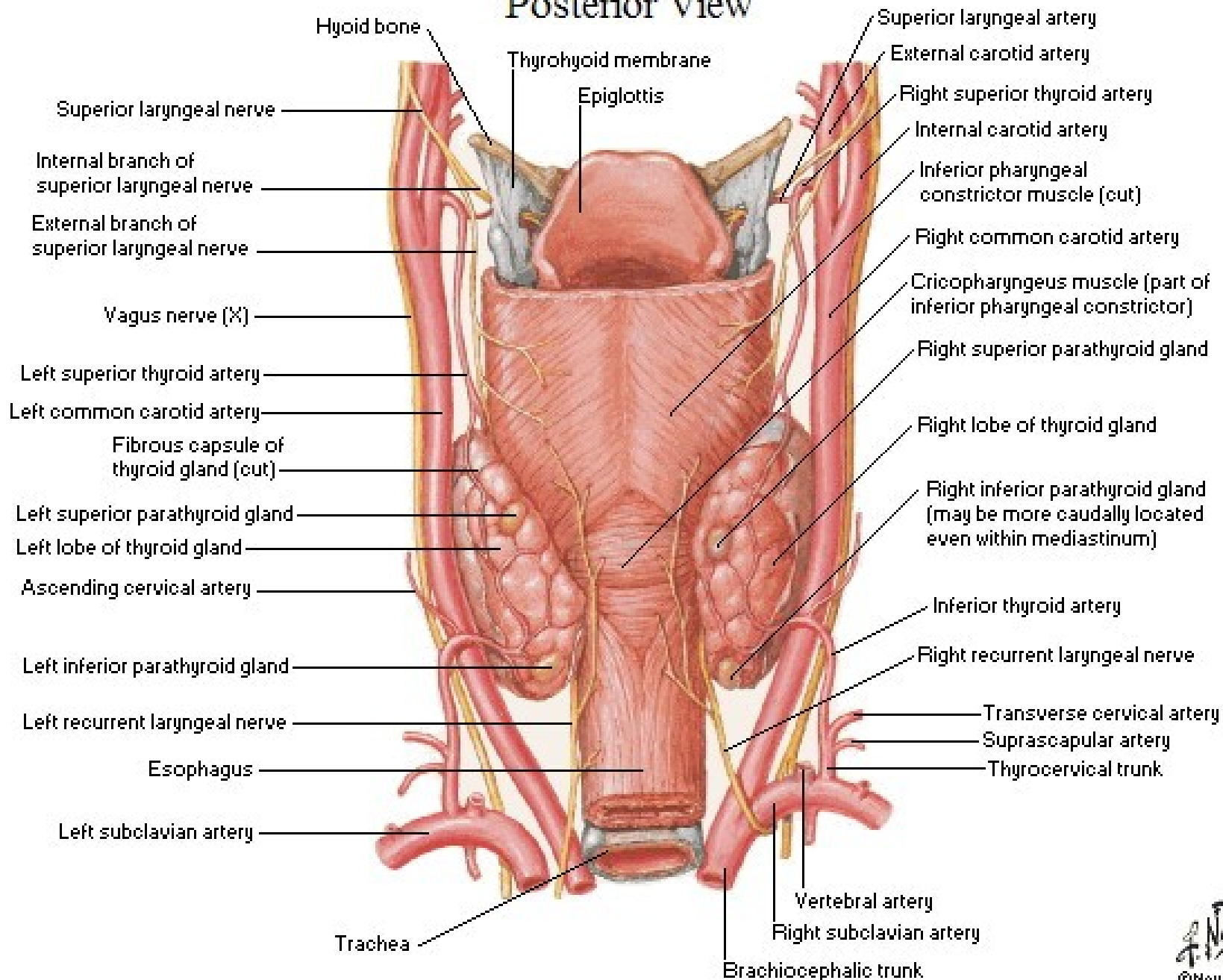
Superficial Veins and Cutaneous Nerves of Neck

Regio infrahyoidea



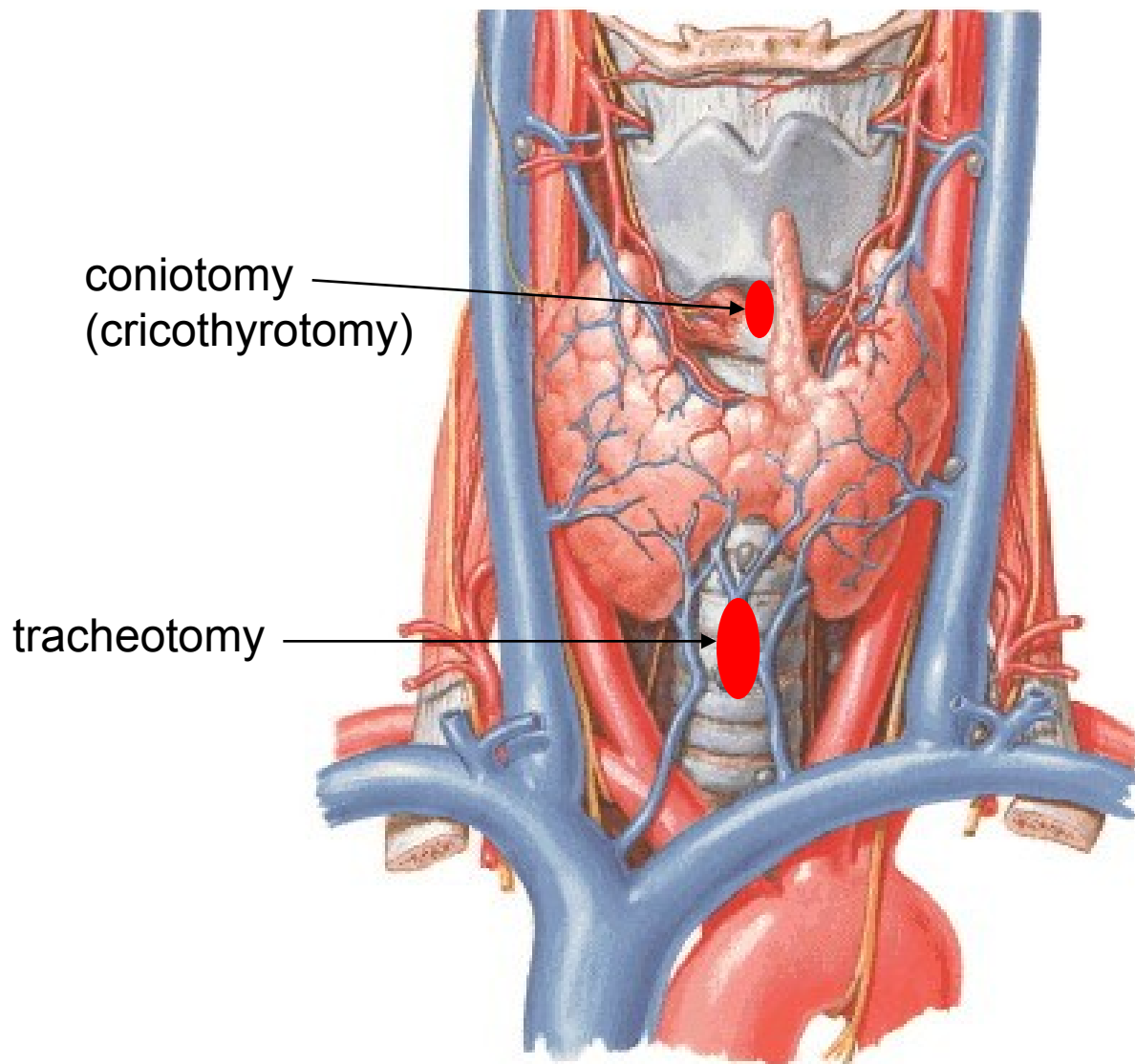
Parathyroid Glands

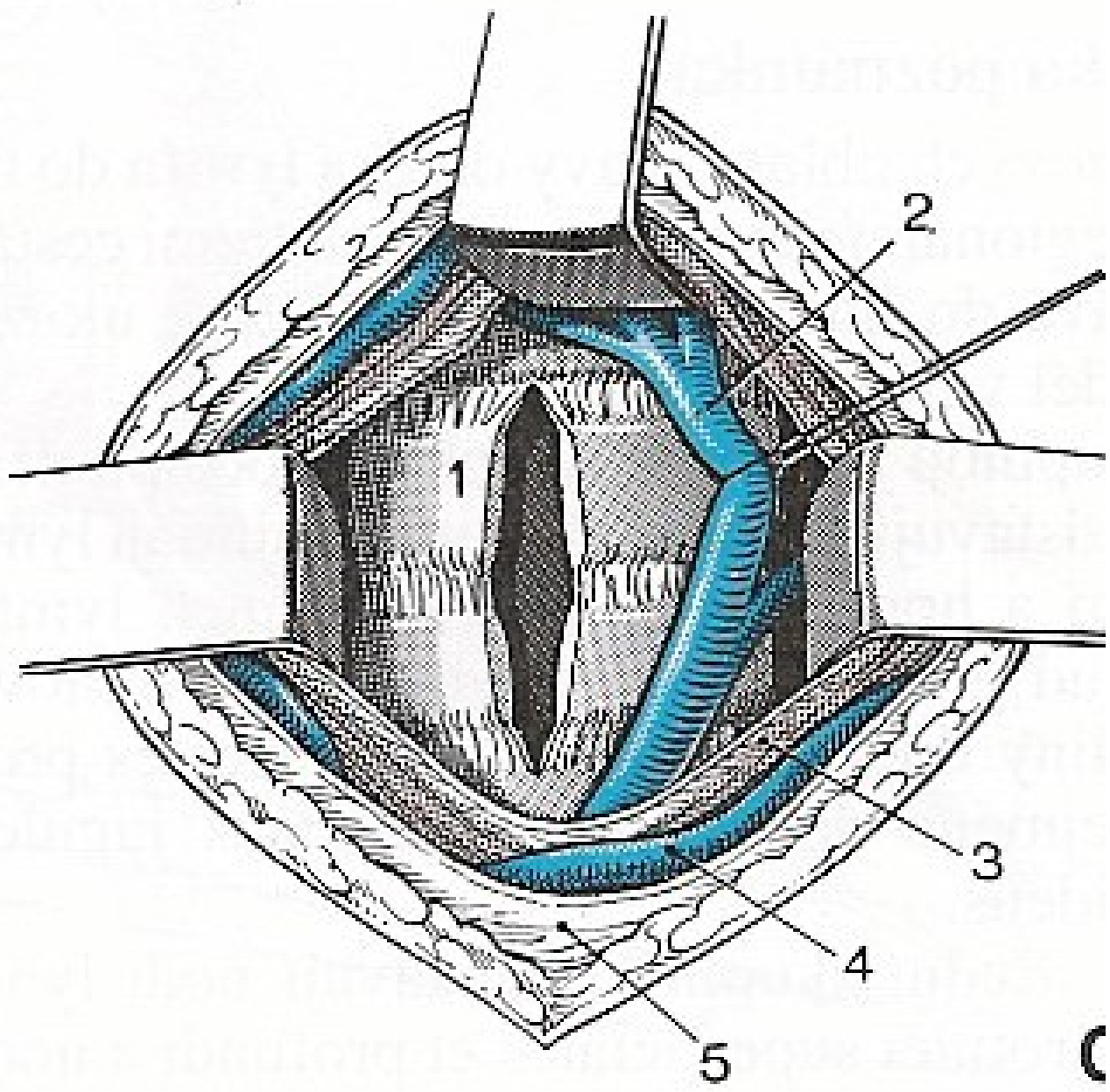
Posterior View



Thyroid Gland

Anterior View



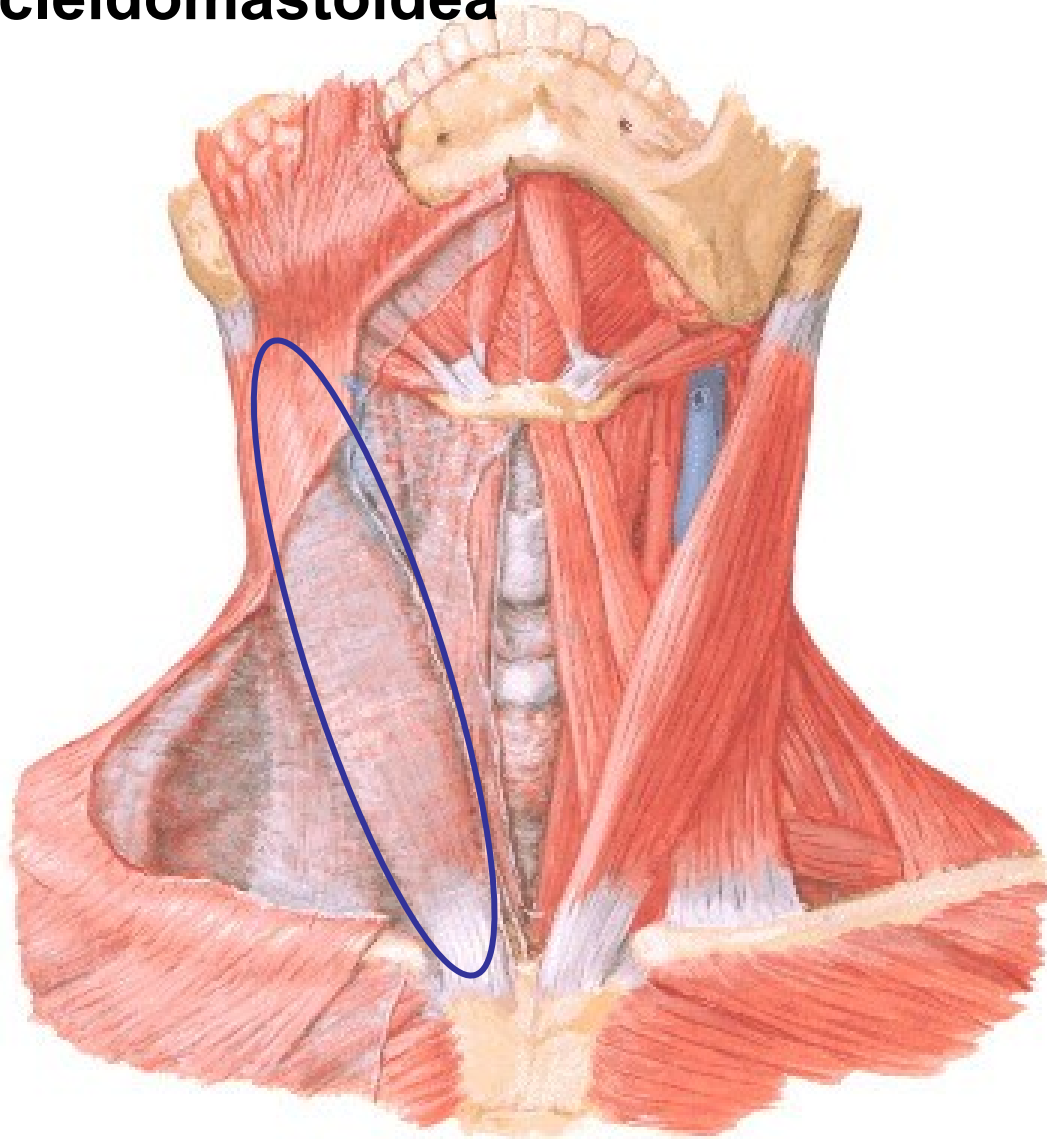


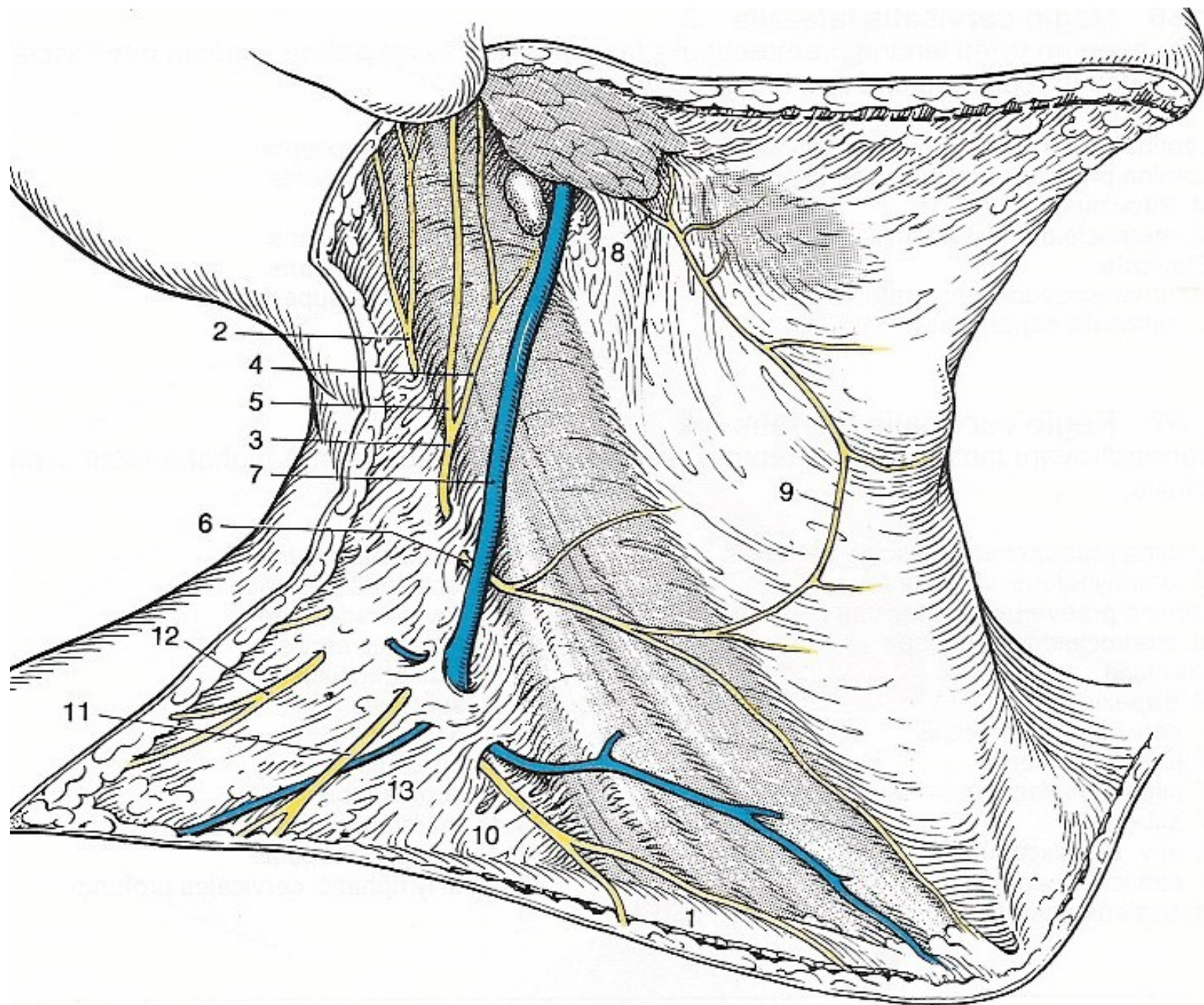
(

Muscles of Neck

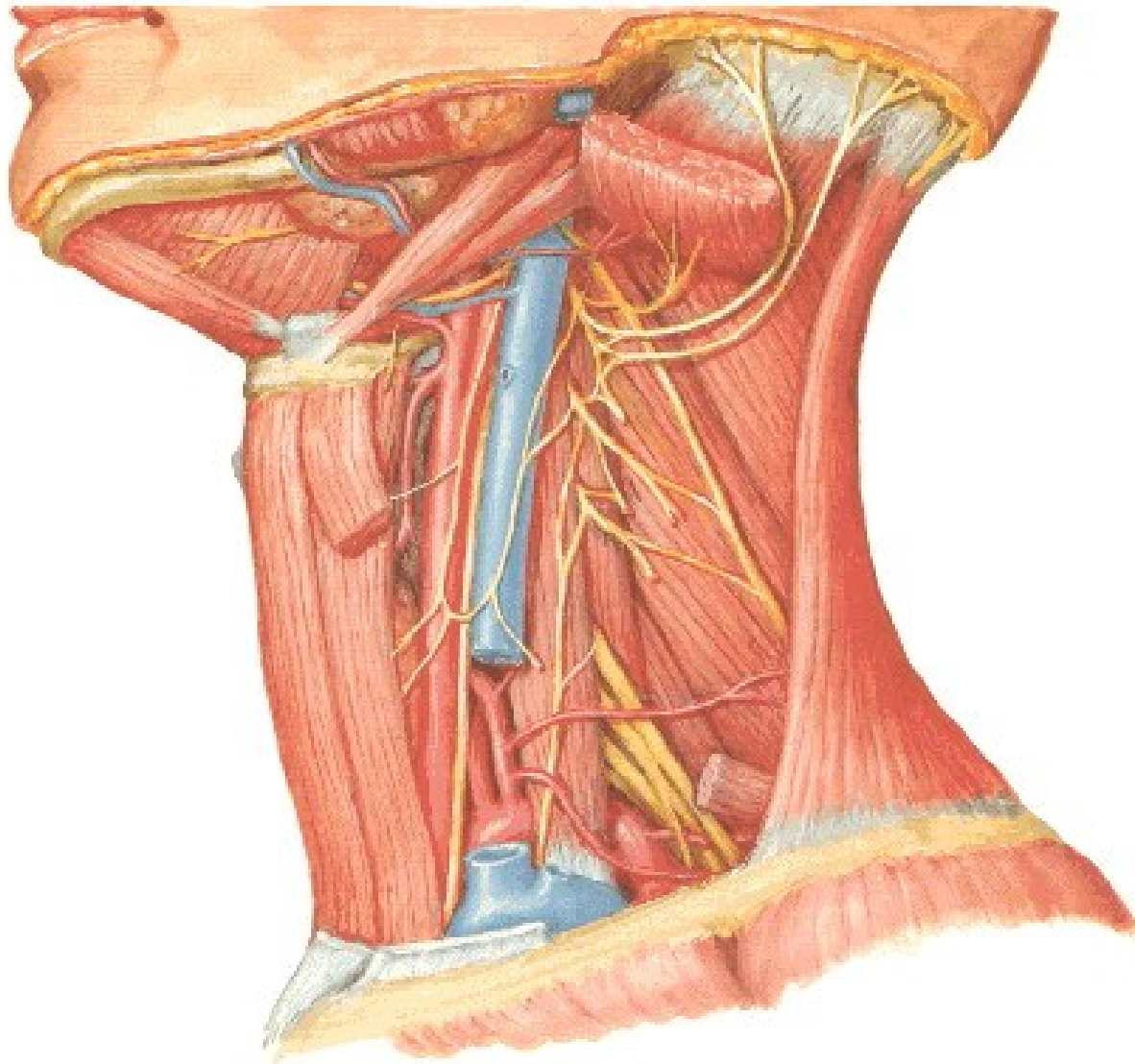
Anterior View

Regio sternocleidomastoidea

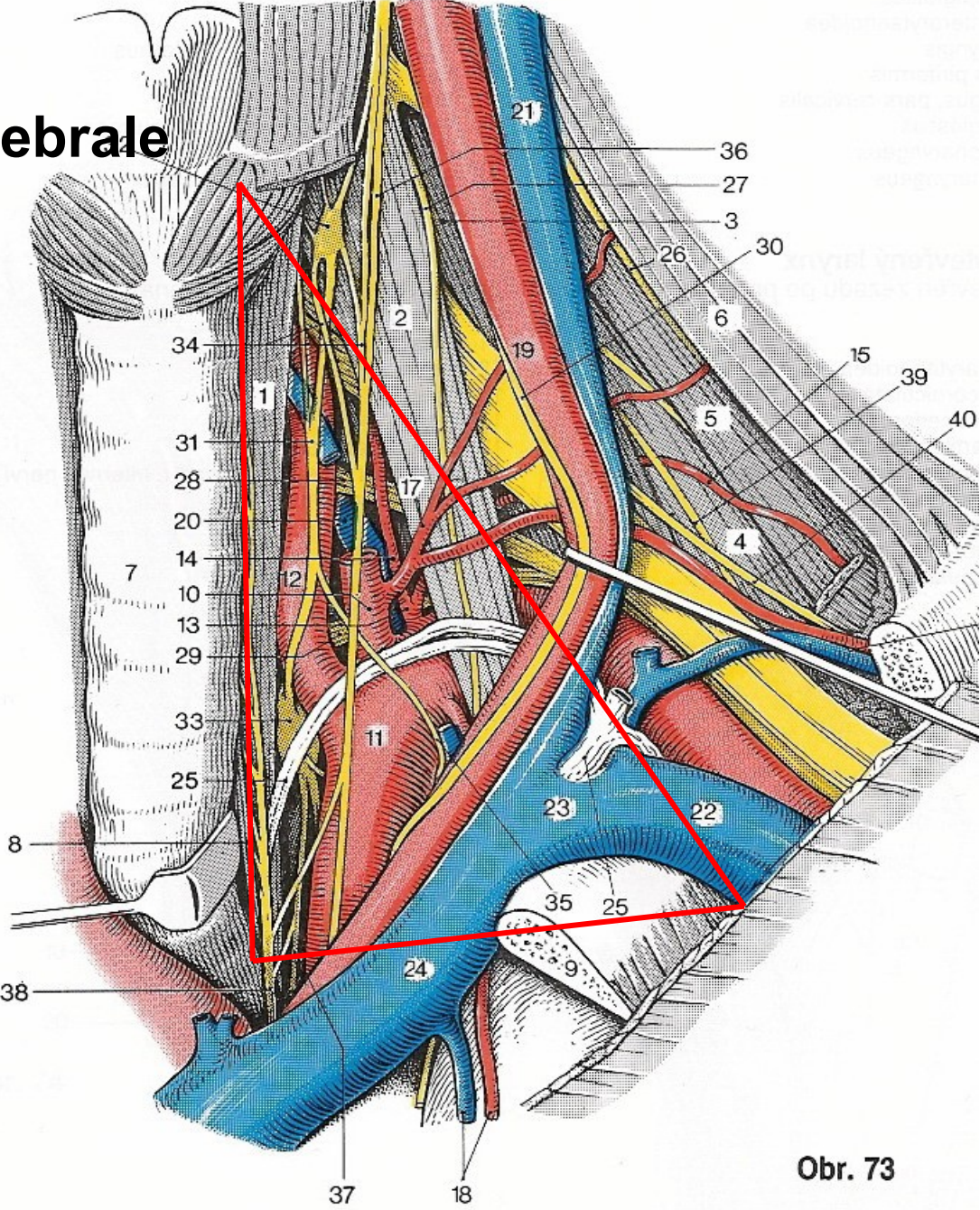




Cervical Plexus in Situ



Trigonum scalenovertebrale



Obr. 73

Trigonum colli posterior

