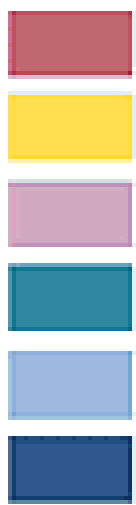
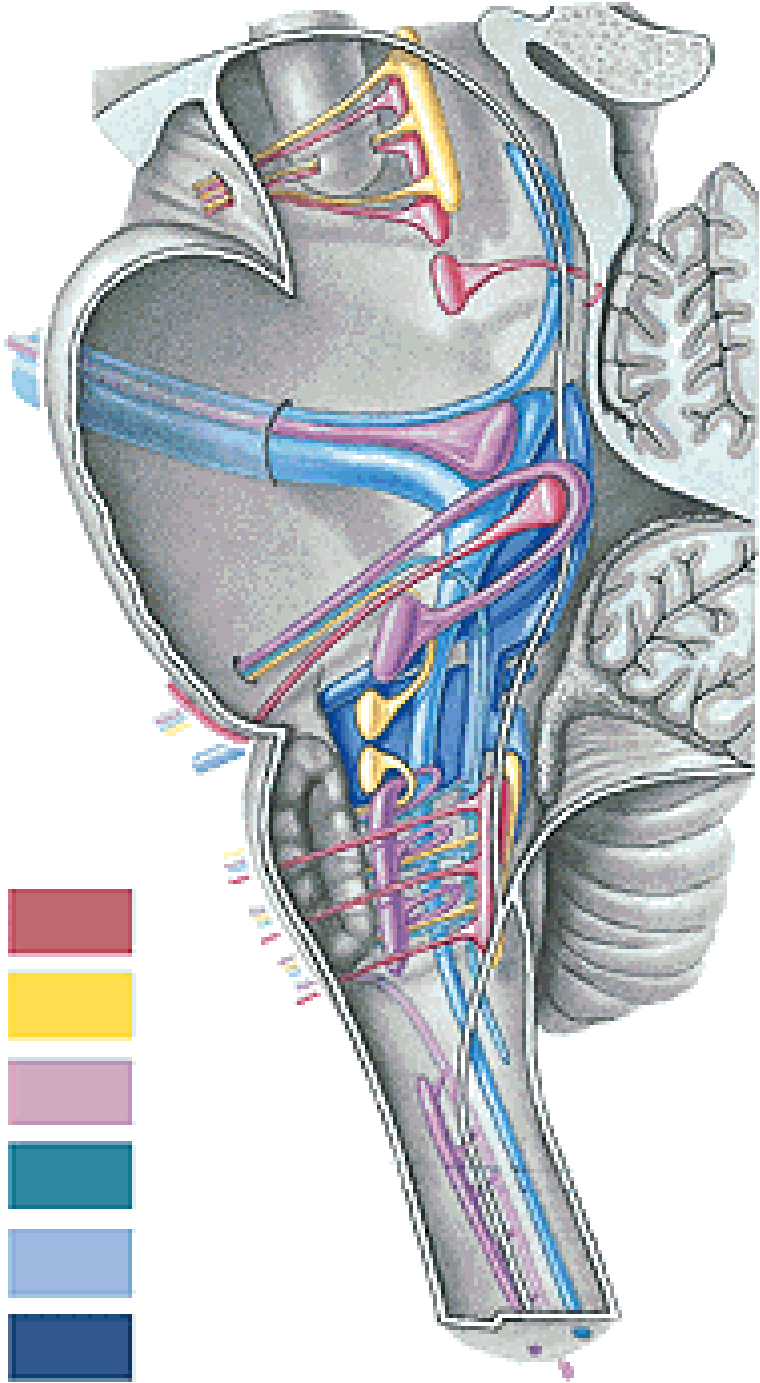
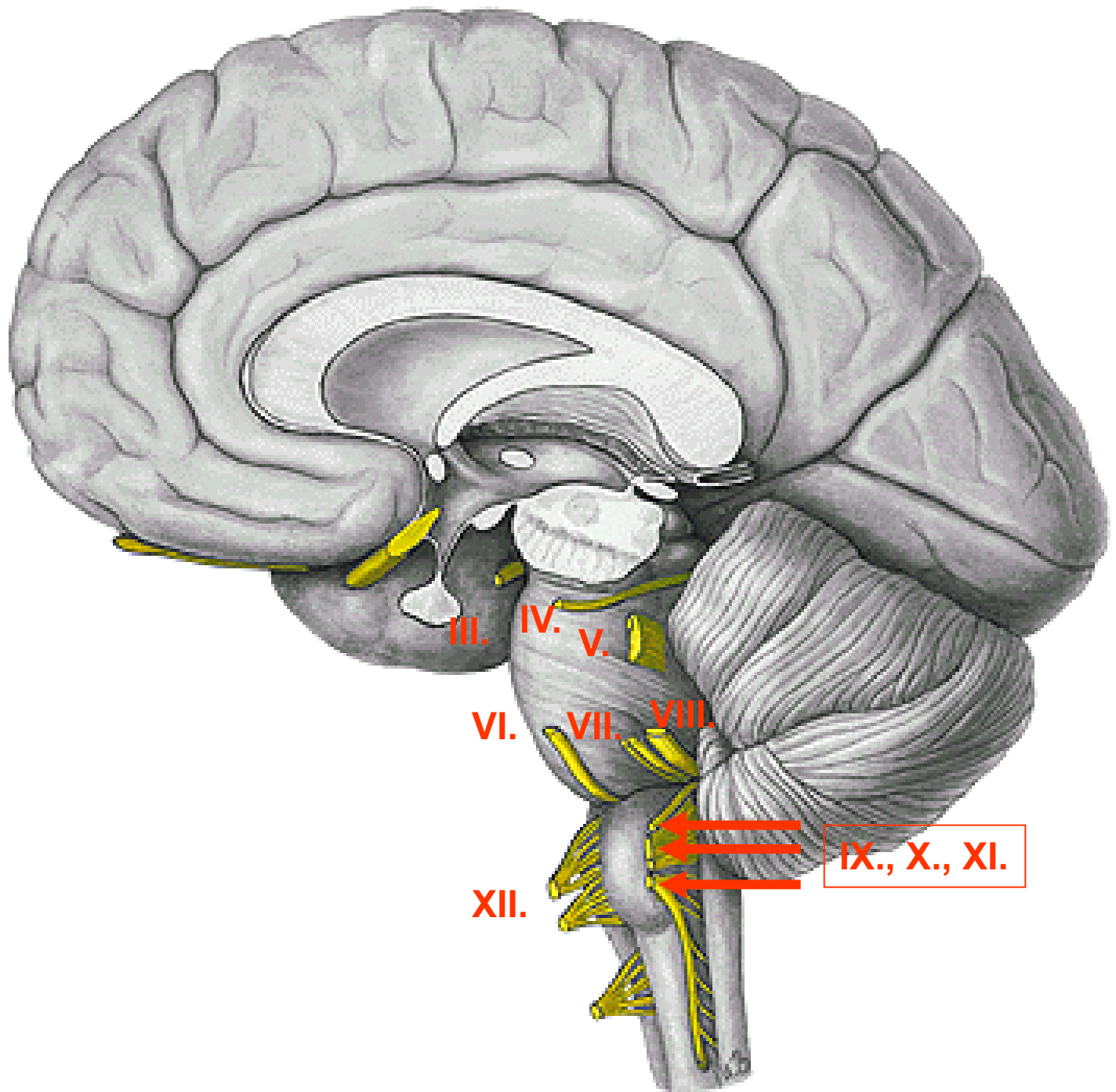


# CRANIAL NERVES I

**CN I – NN. OLFACTORII**  
**CN II – N. OPTICUS**







III.

IV.

V.

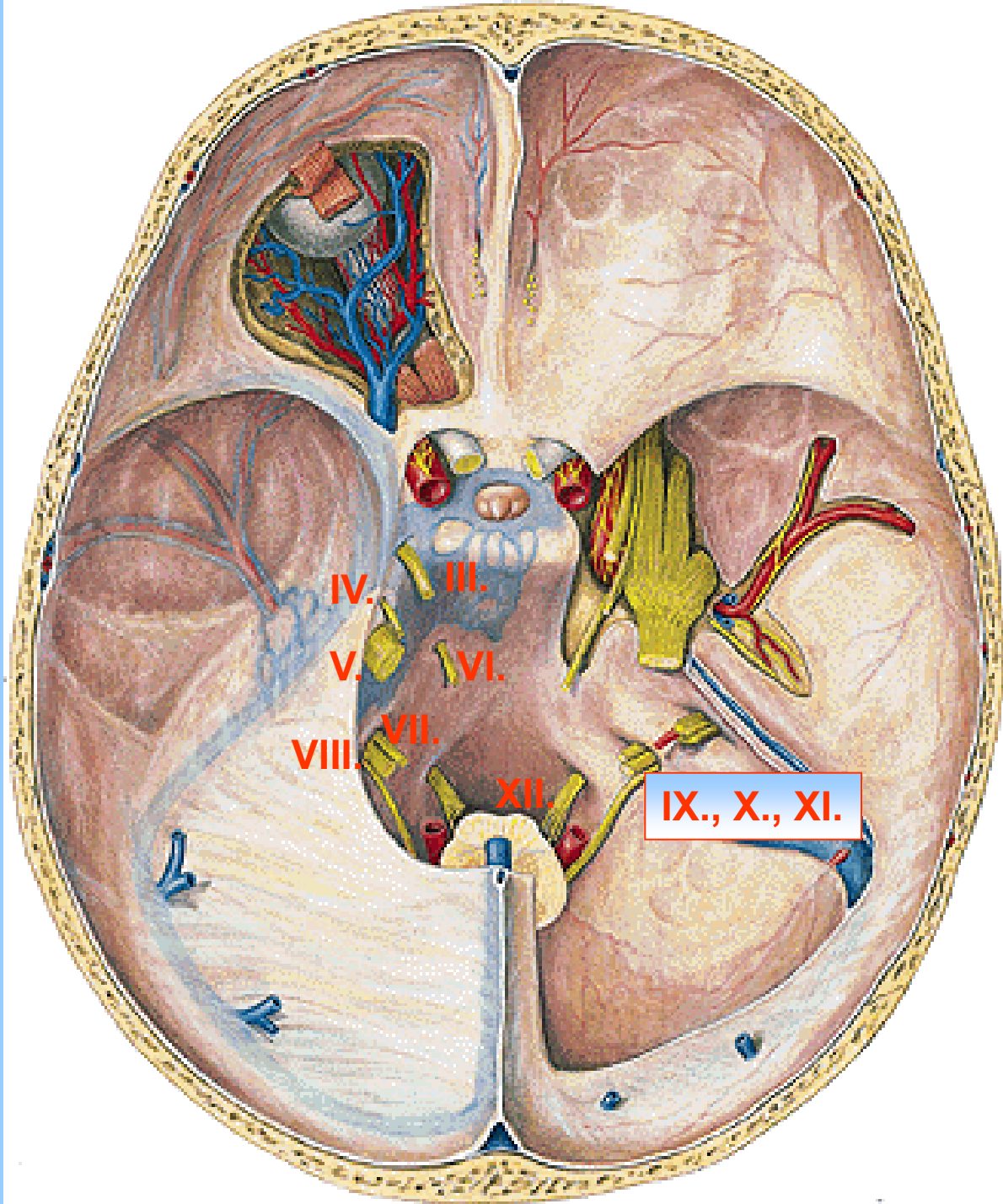
VI.

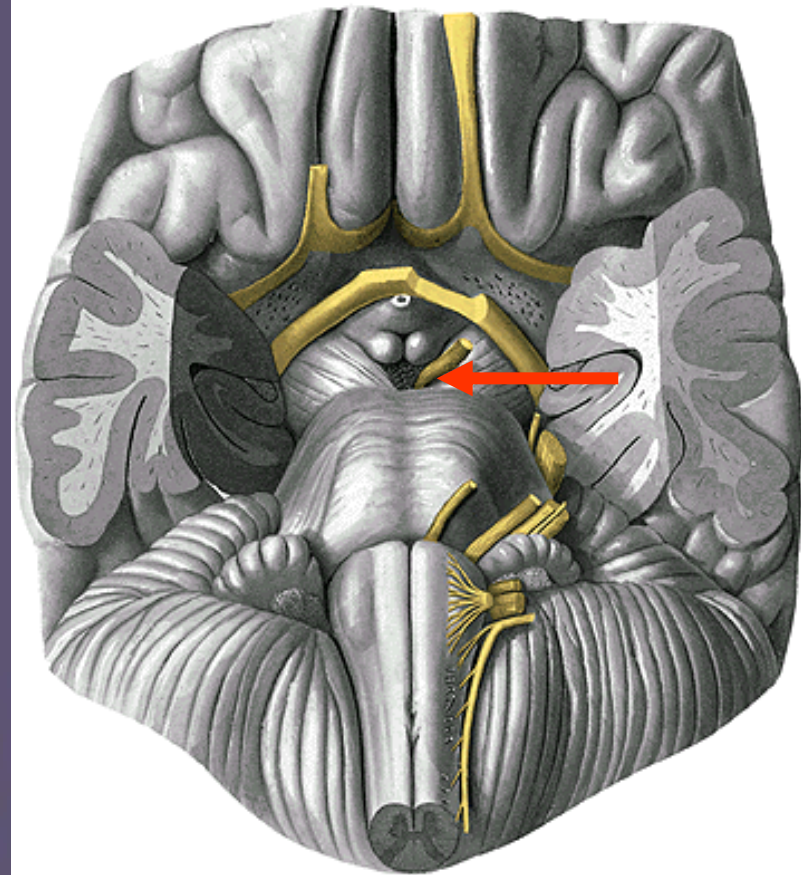
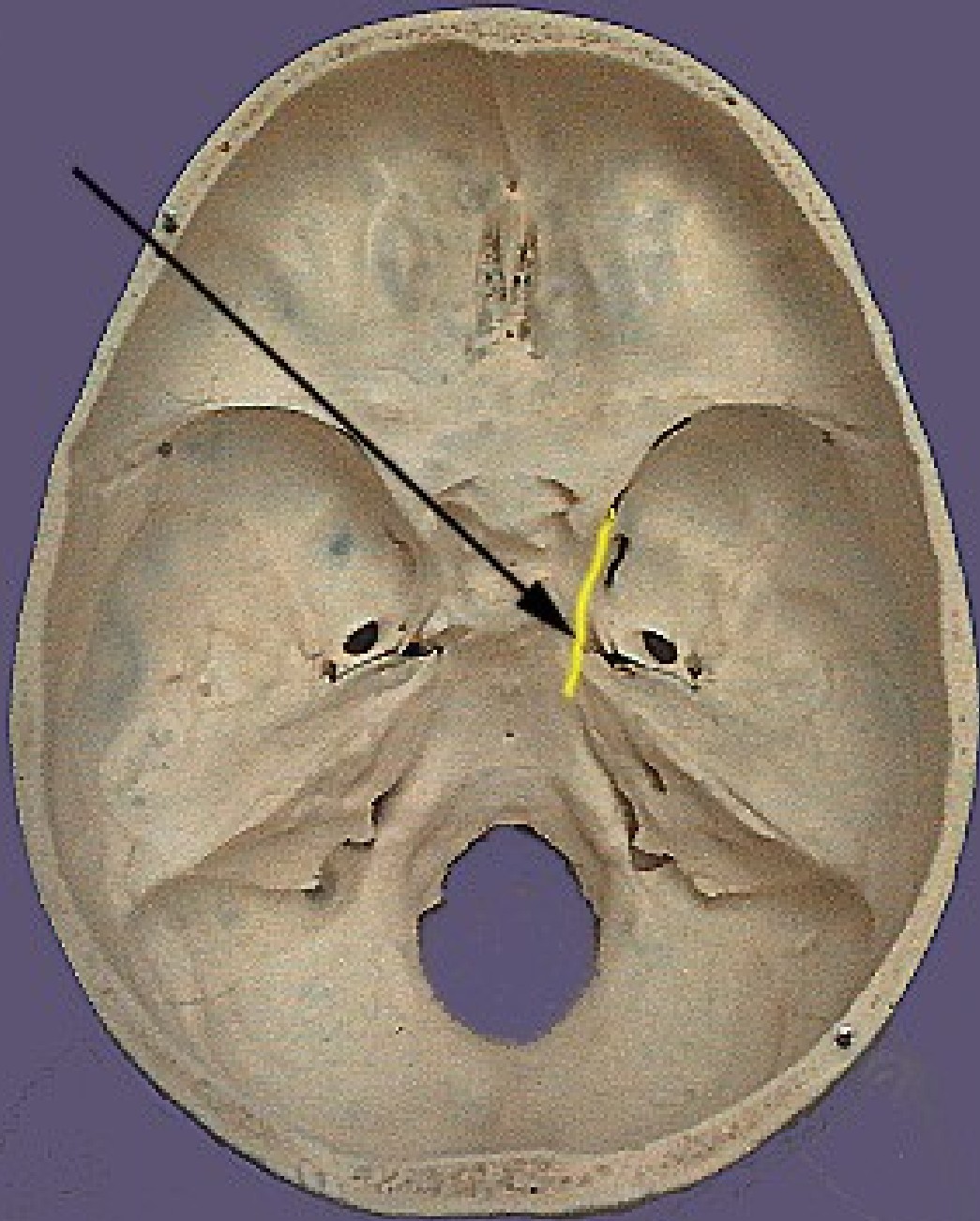
VII.

VIII.

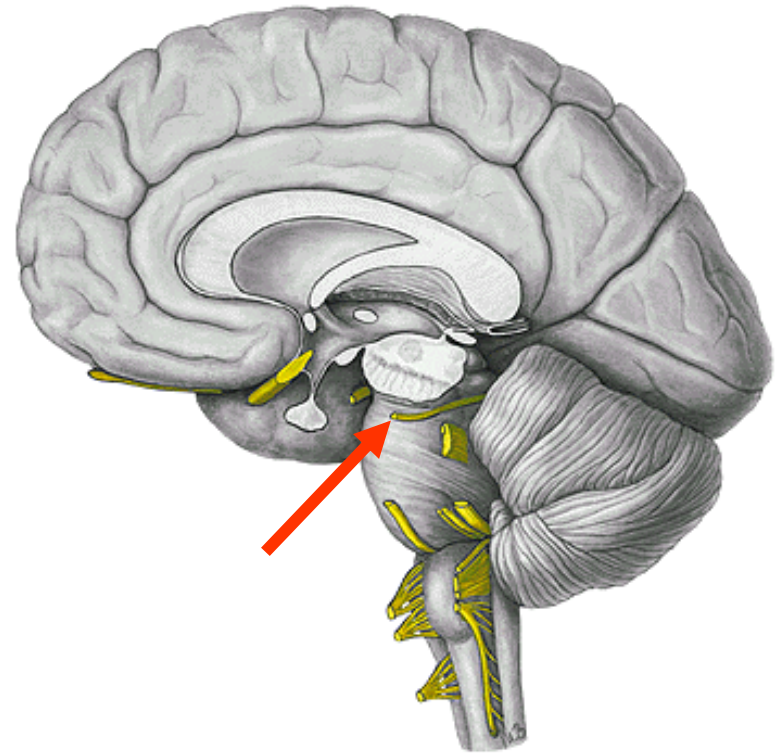
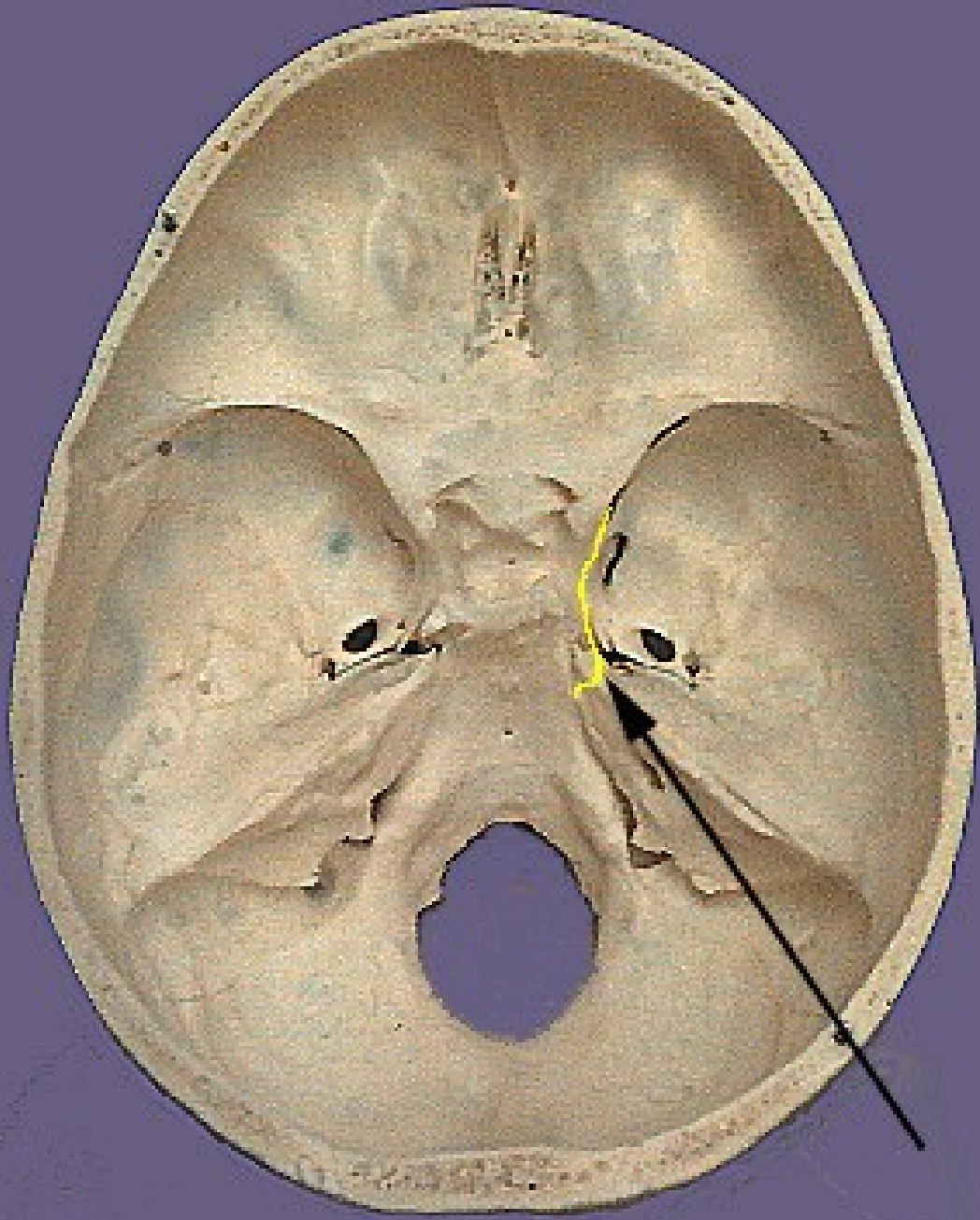
XII.

IX., X., XI.



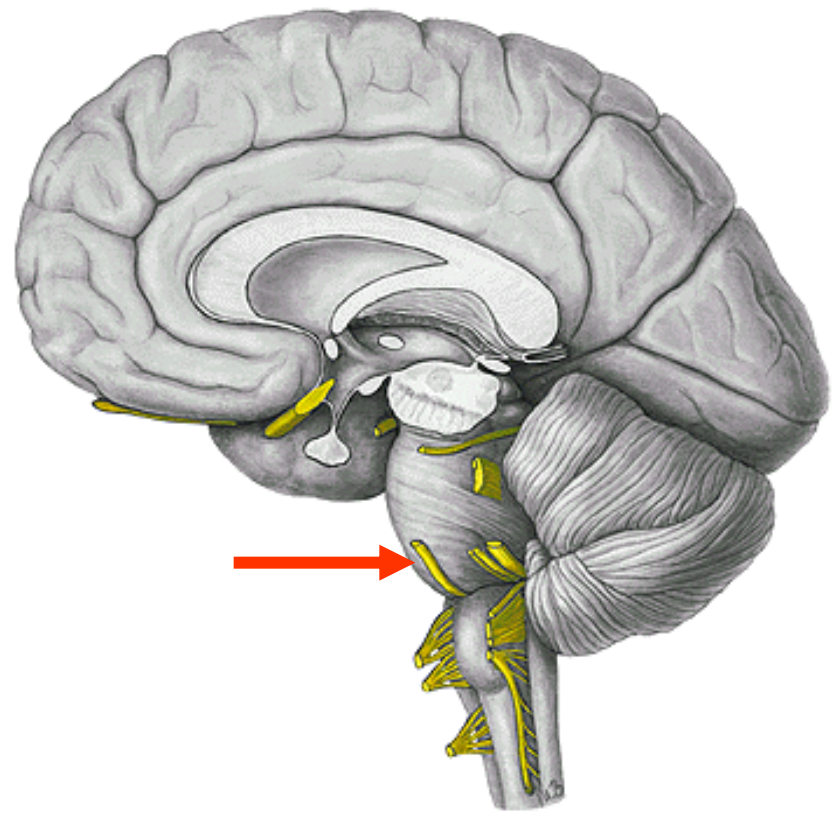
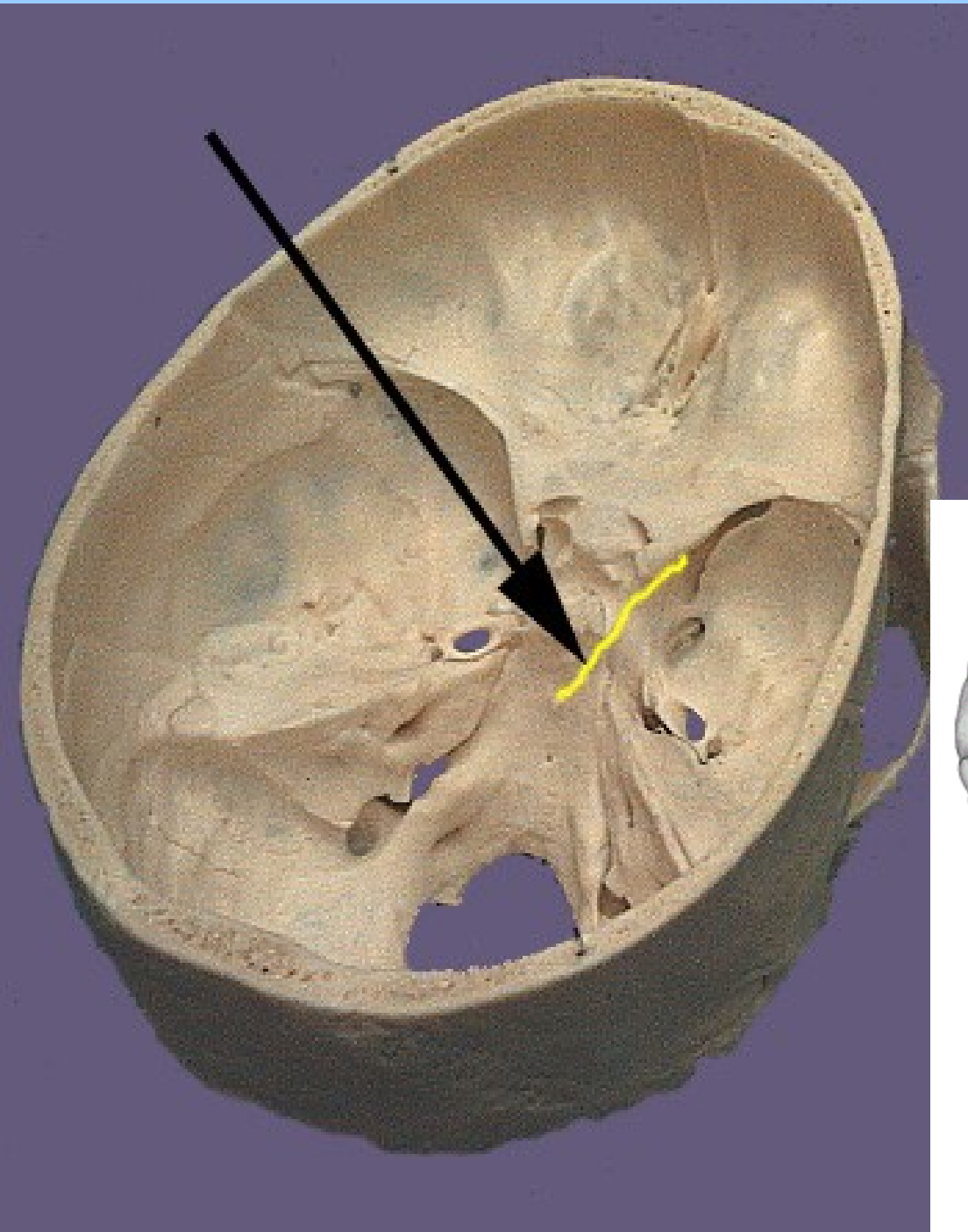


**n.III.**

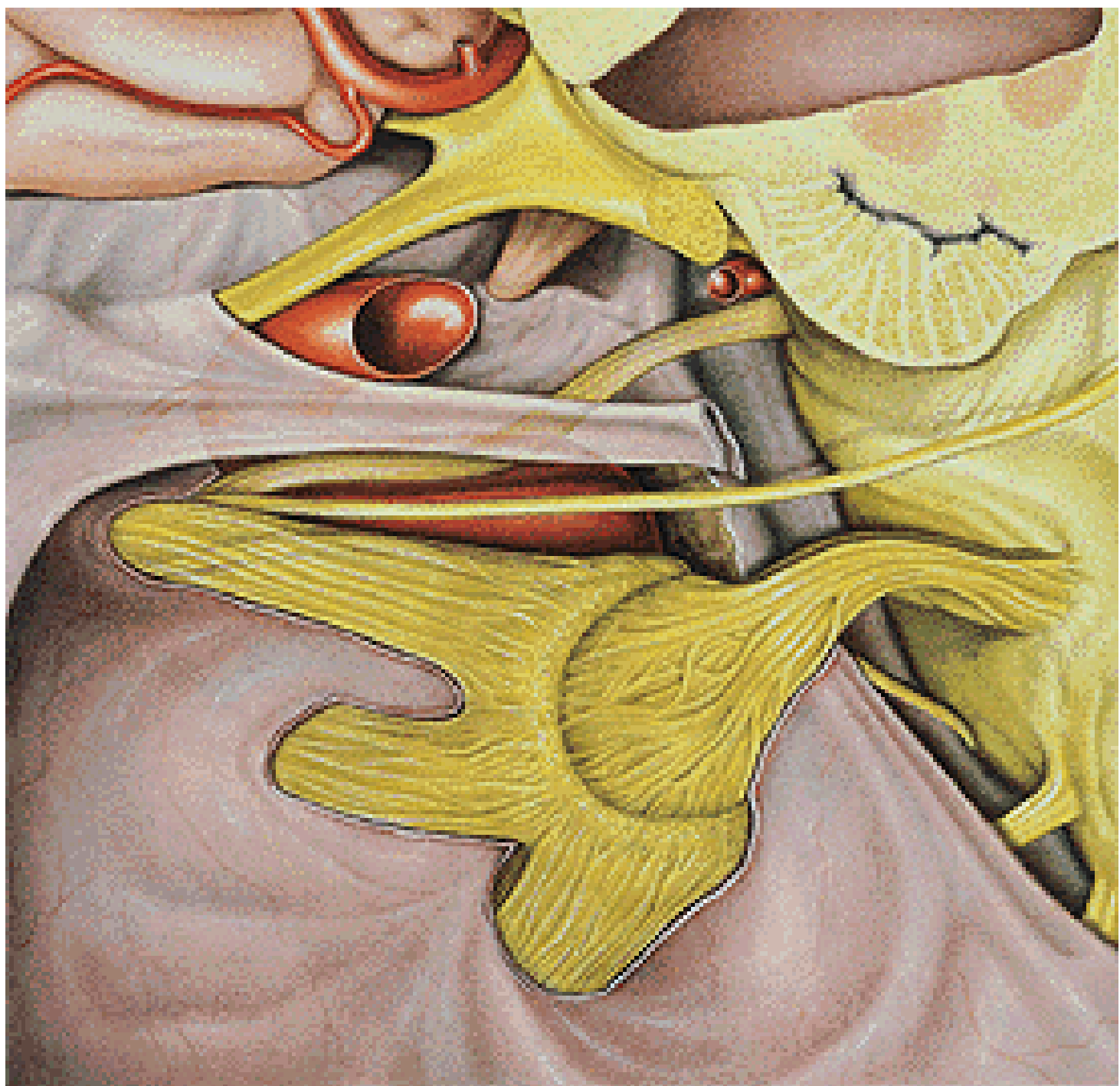


n.IV.

n.VI.

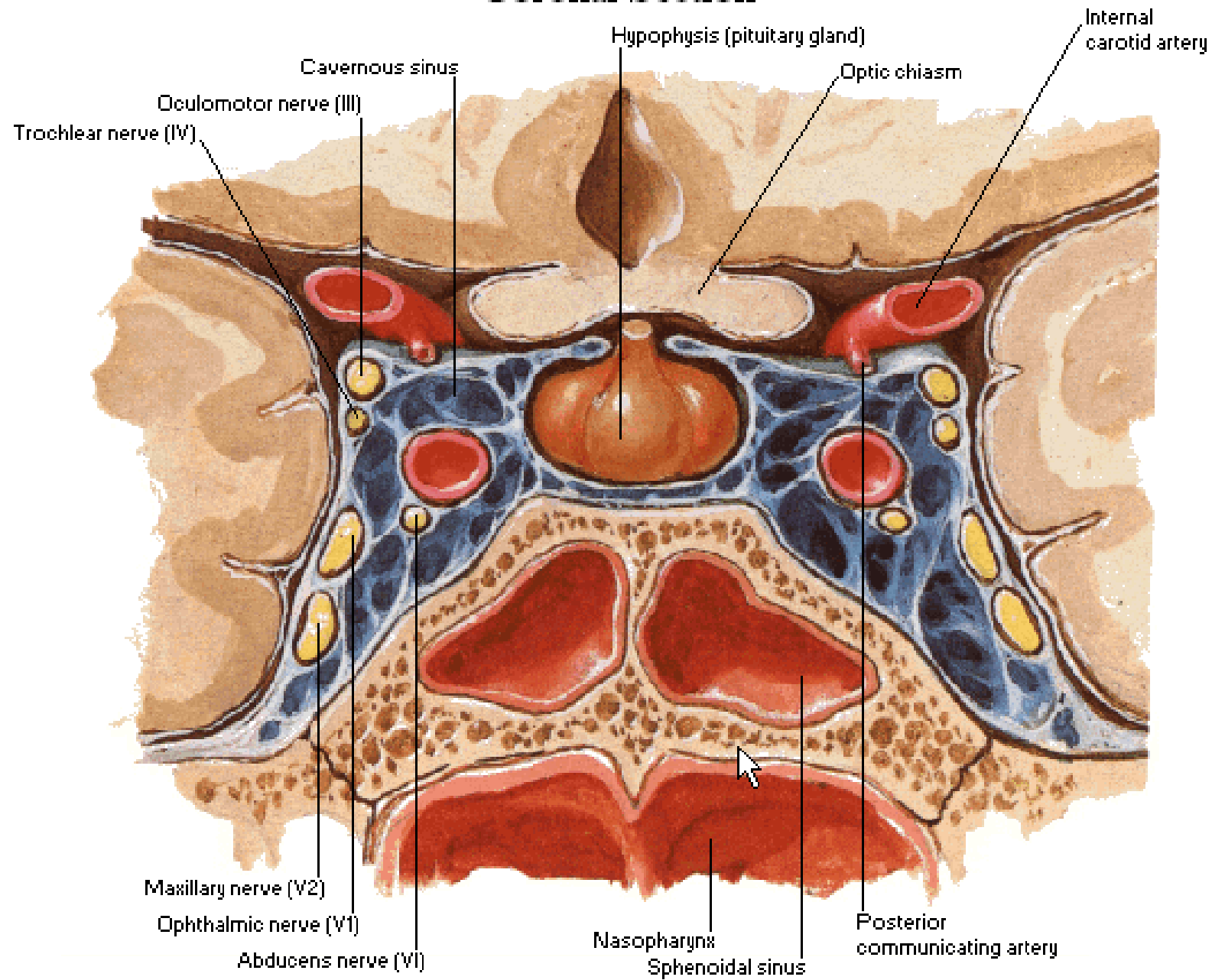


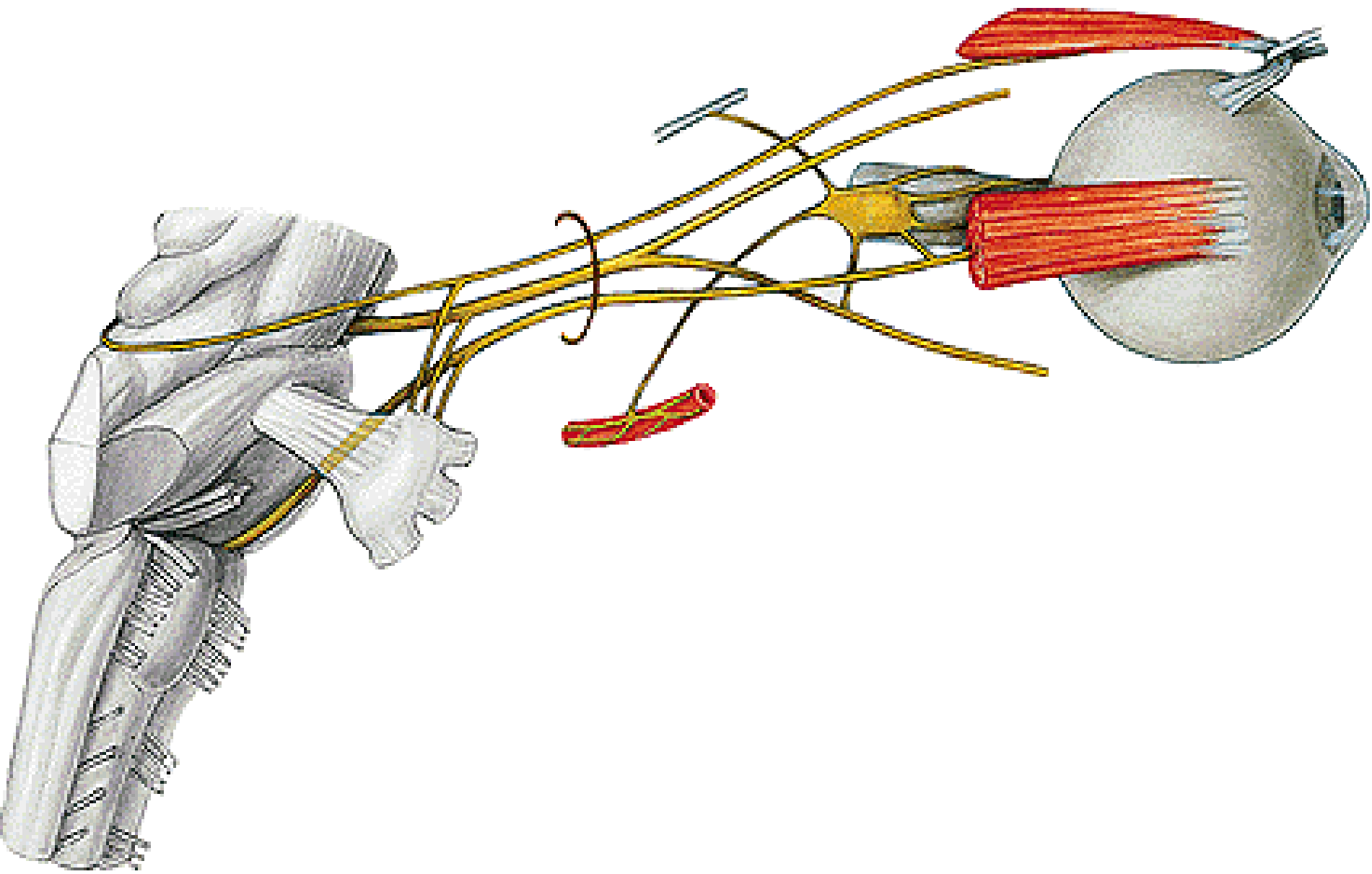


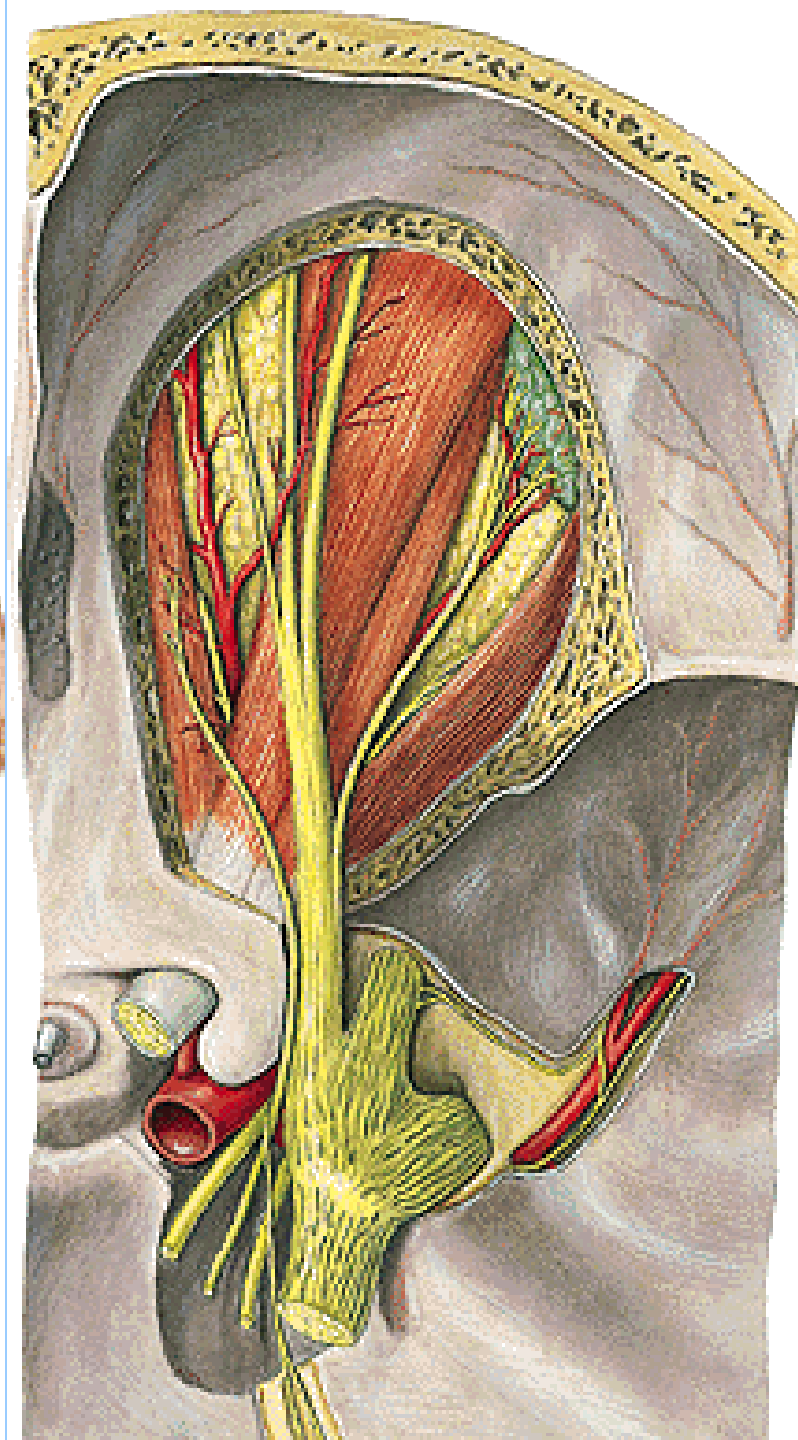
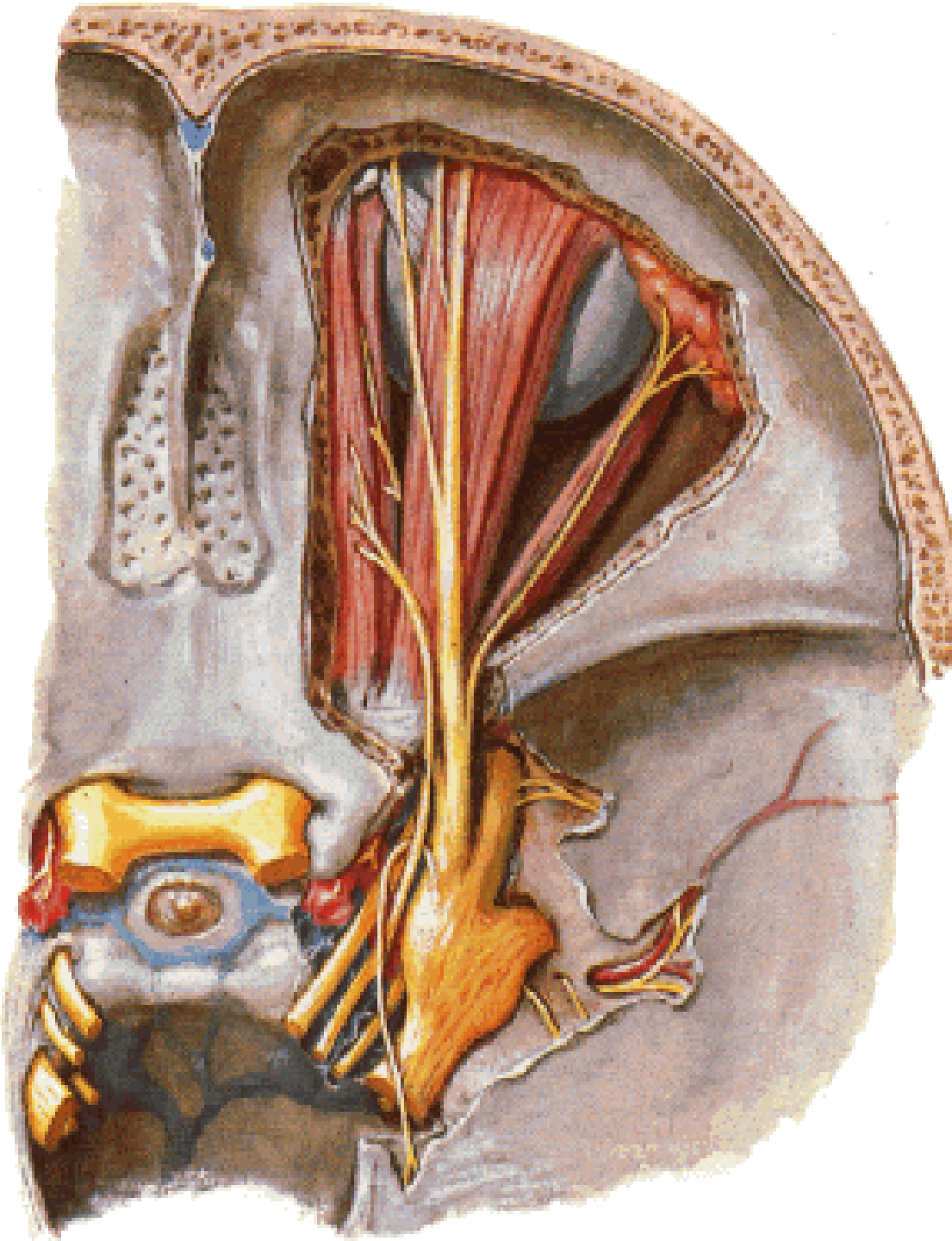


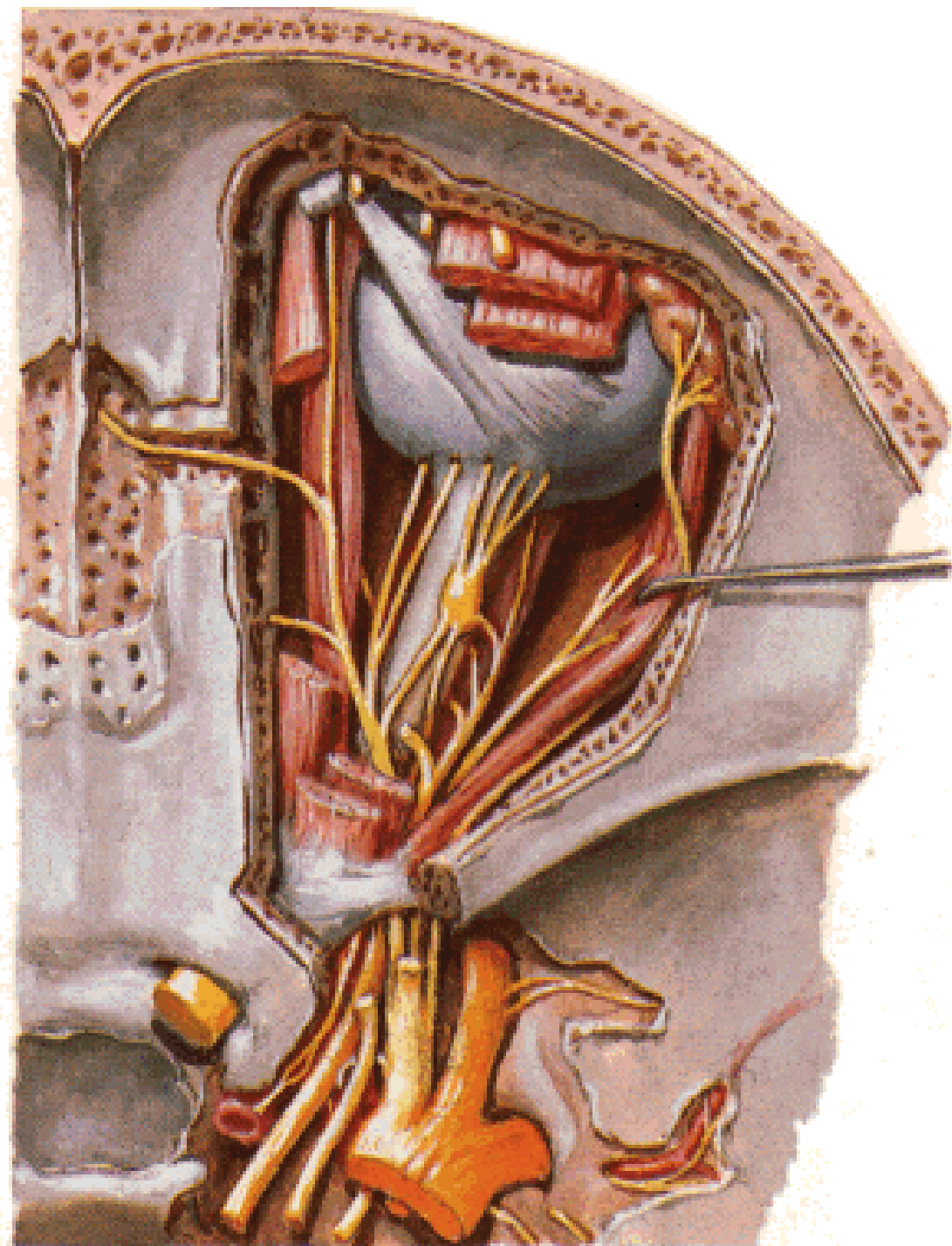
# Cavernous Sinus

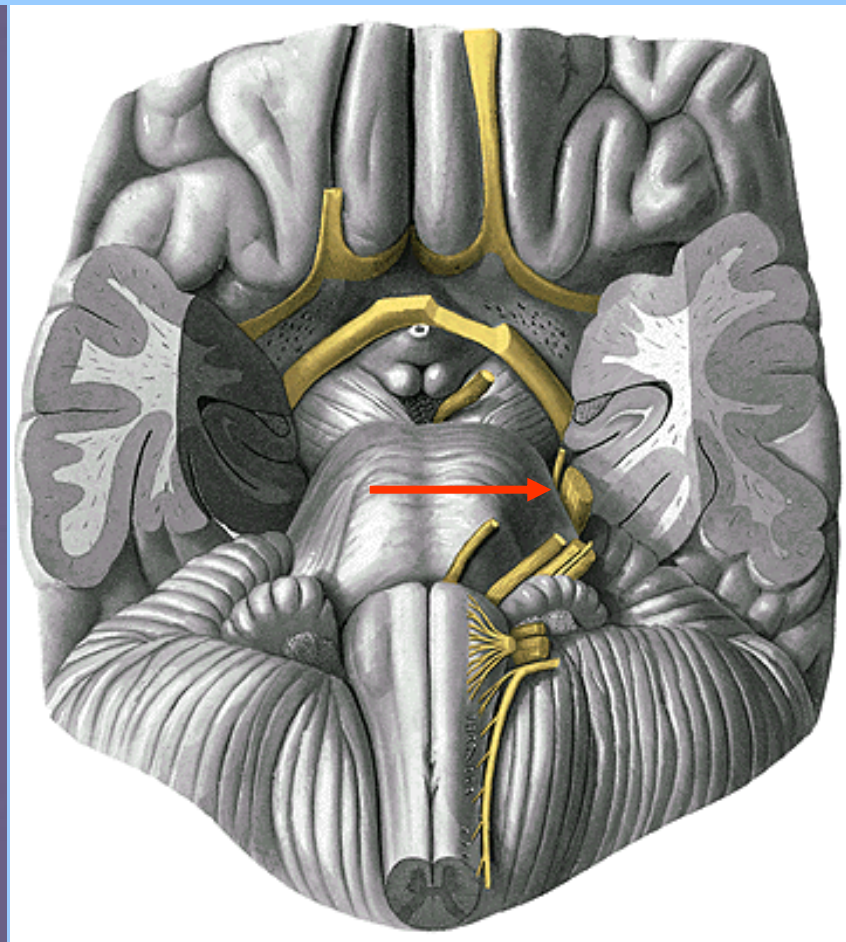
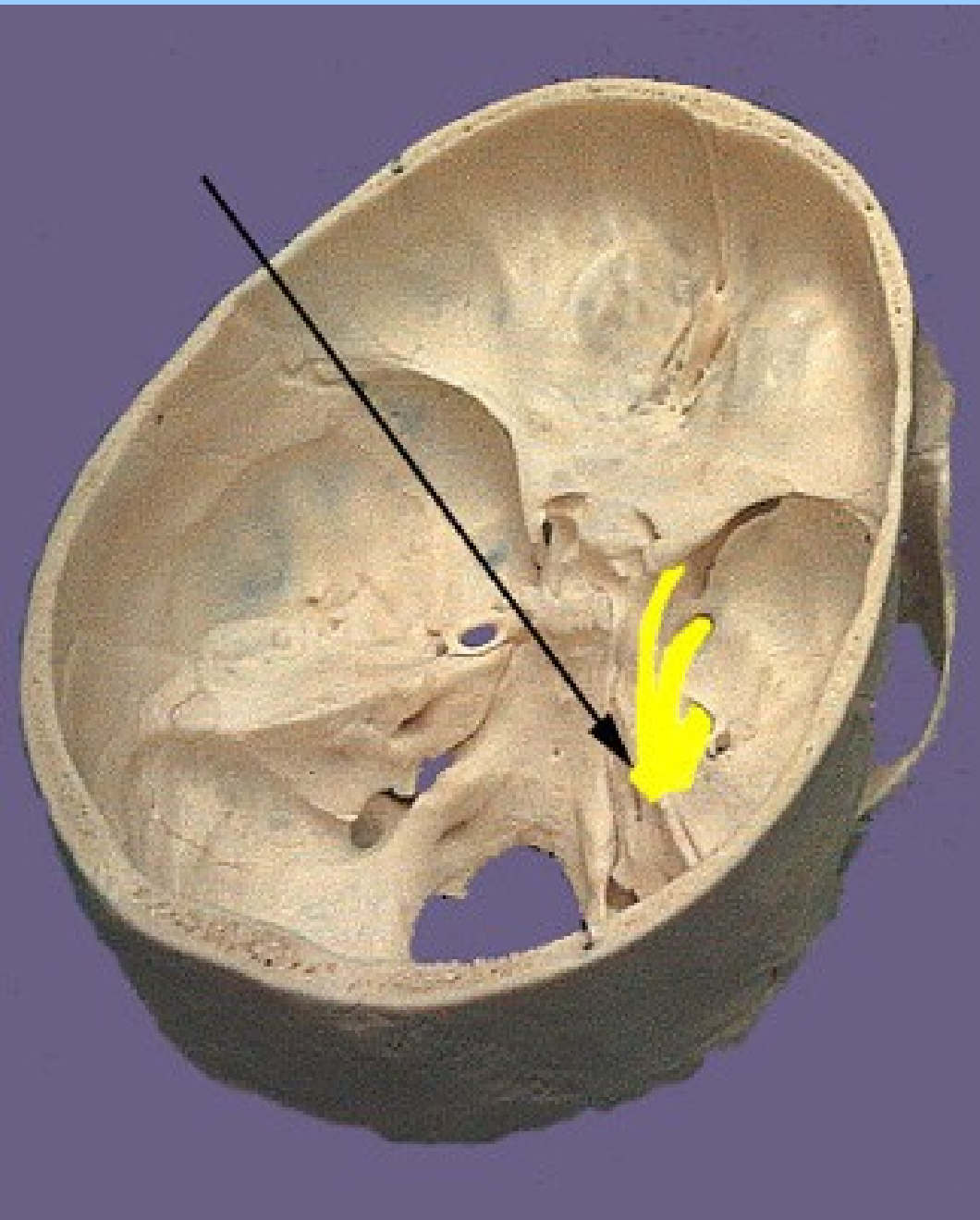
## Coronal Section



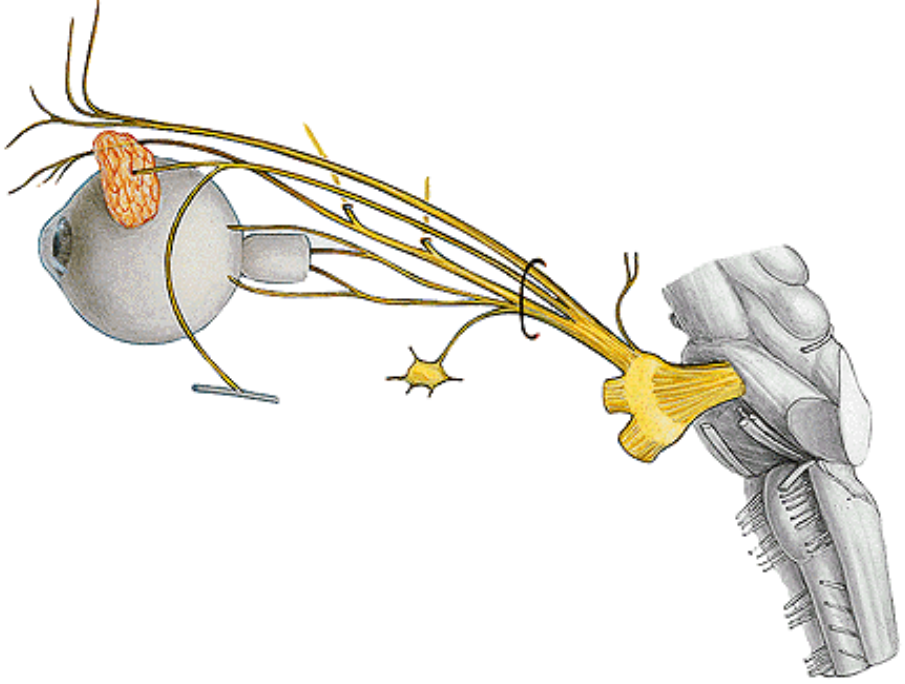




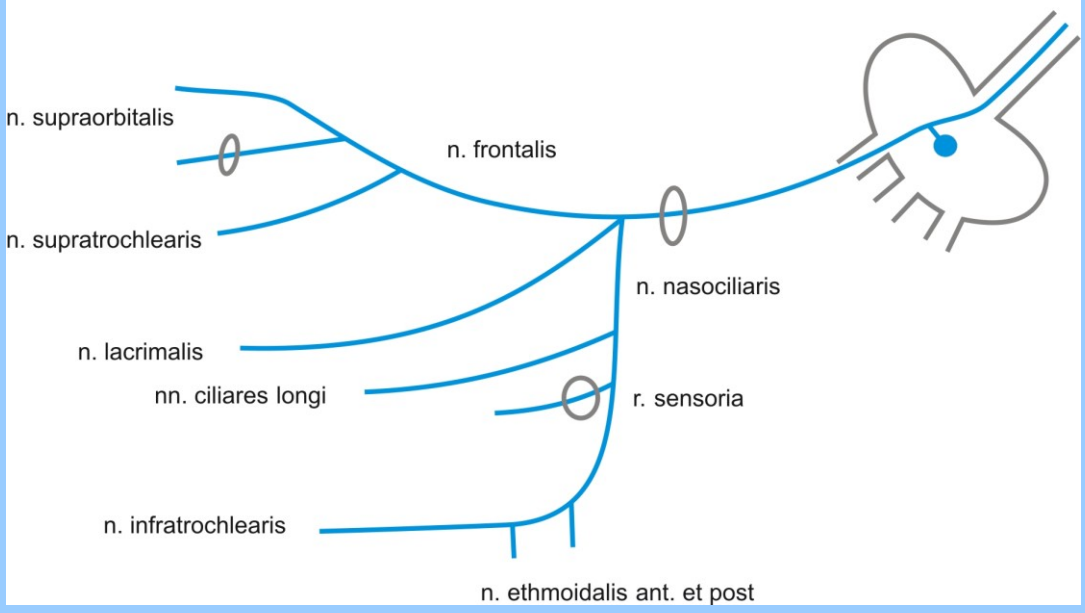




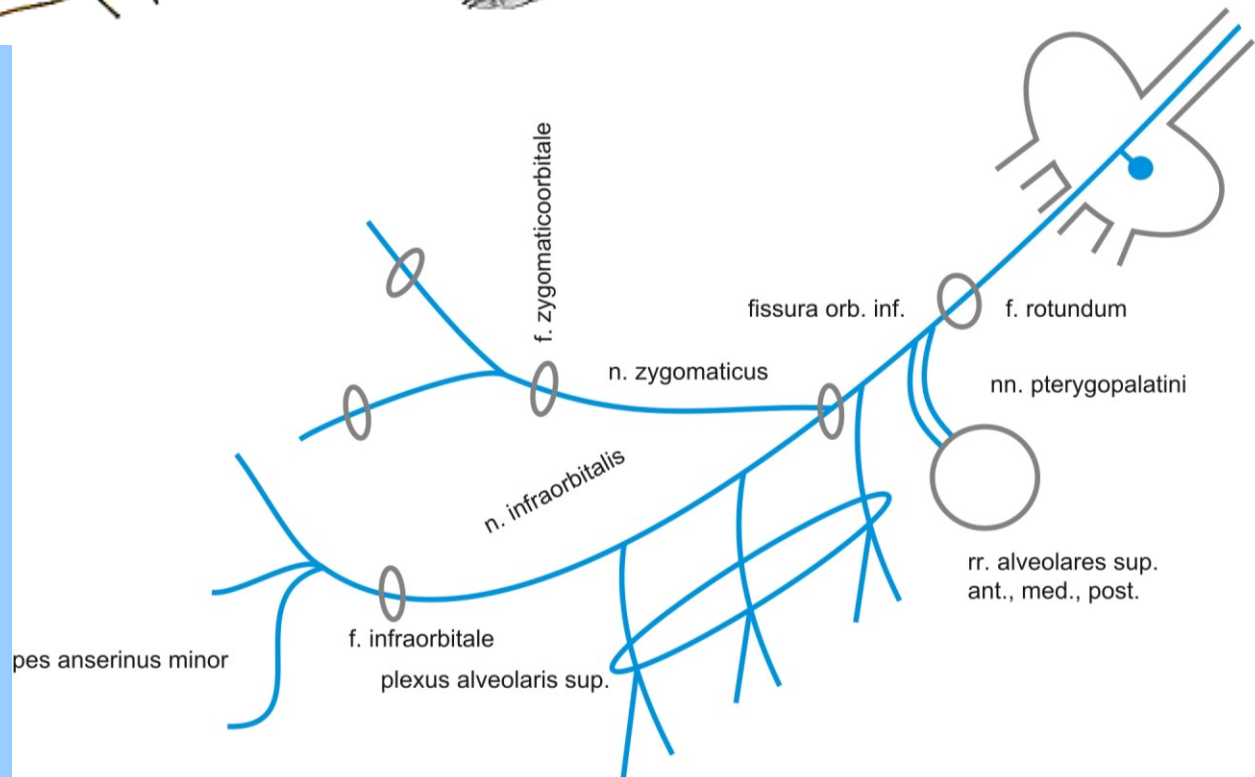
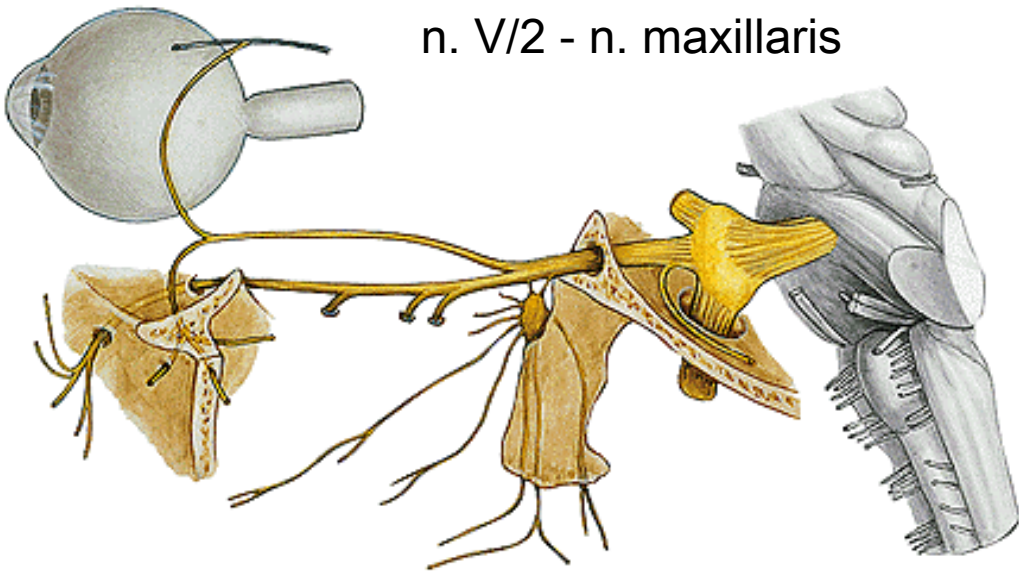
n.V.



n. V/1 - n. ophthalmicus

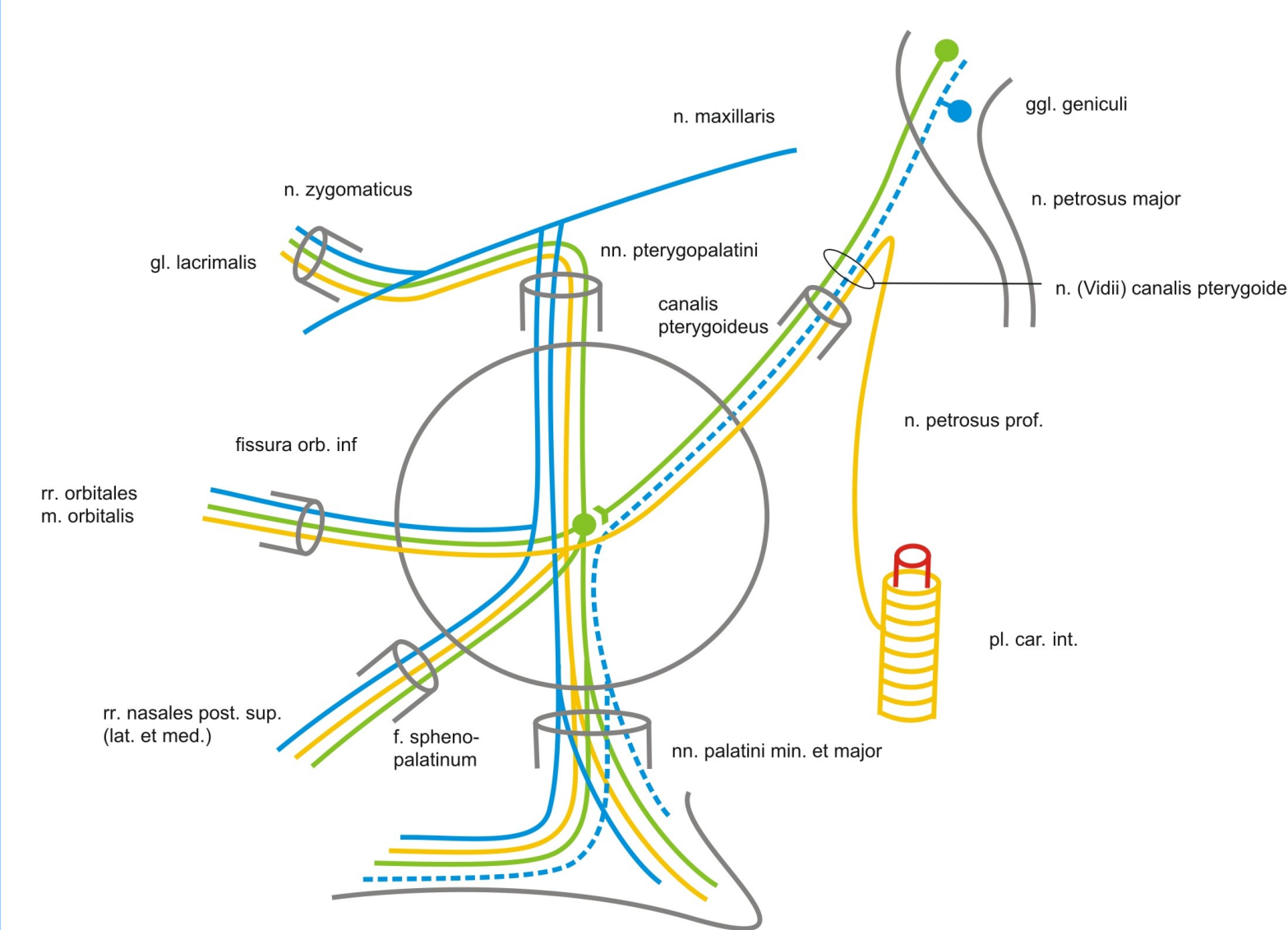


n. V/2 - n. maxillaris

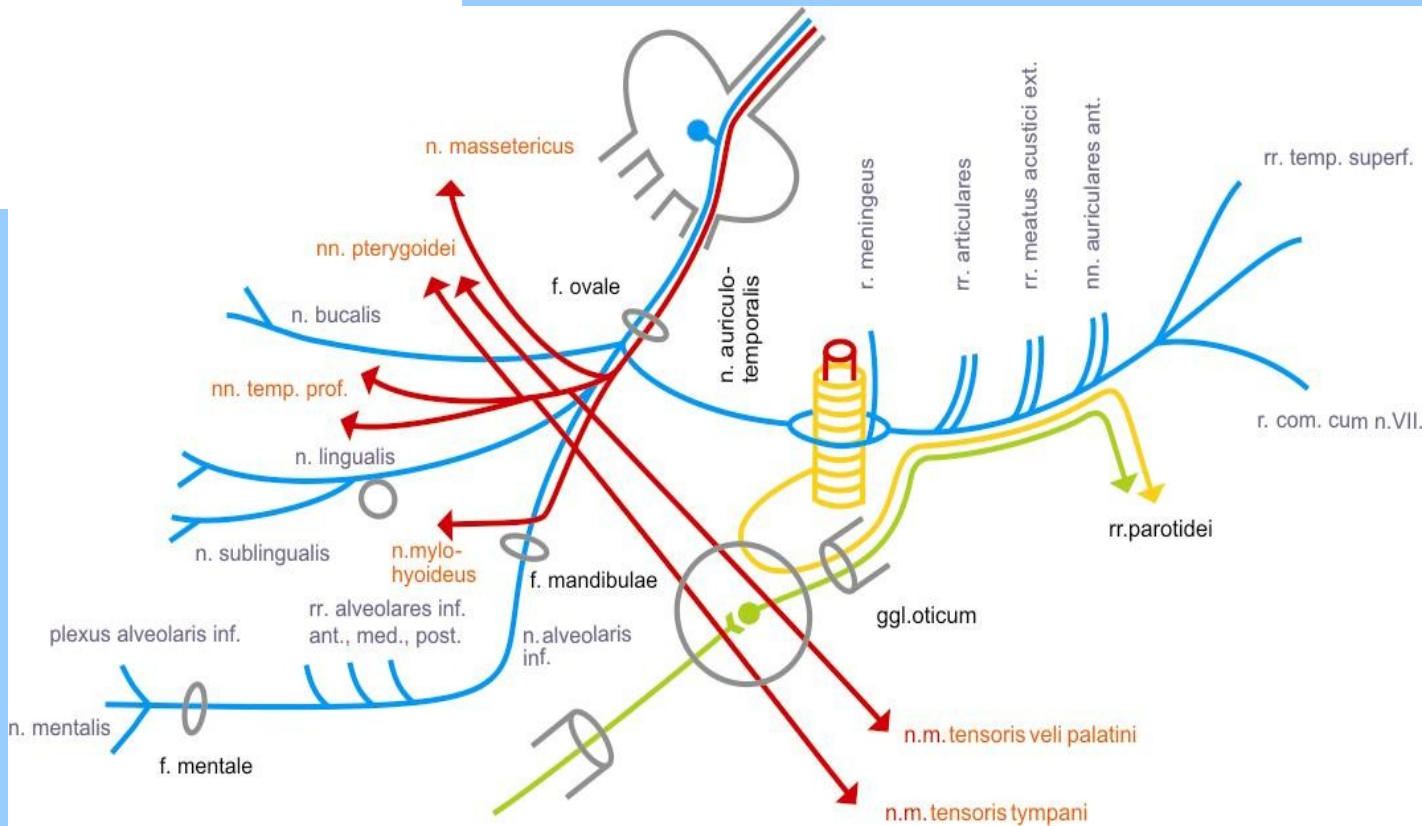
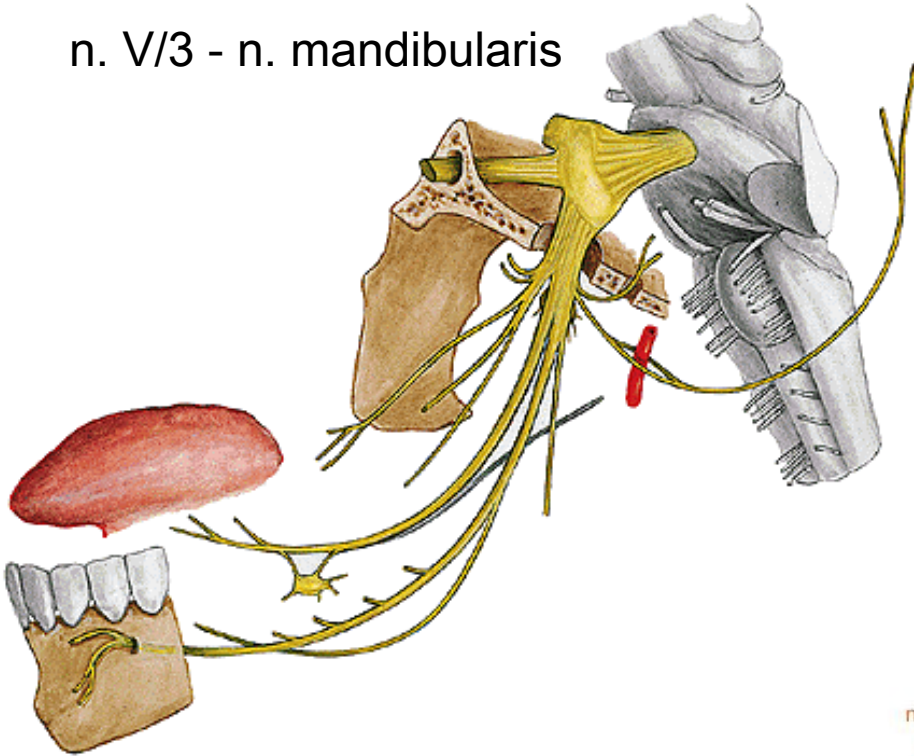




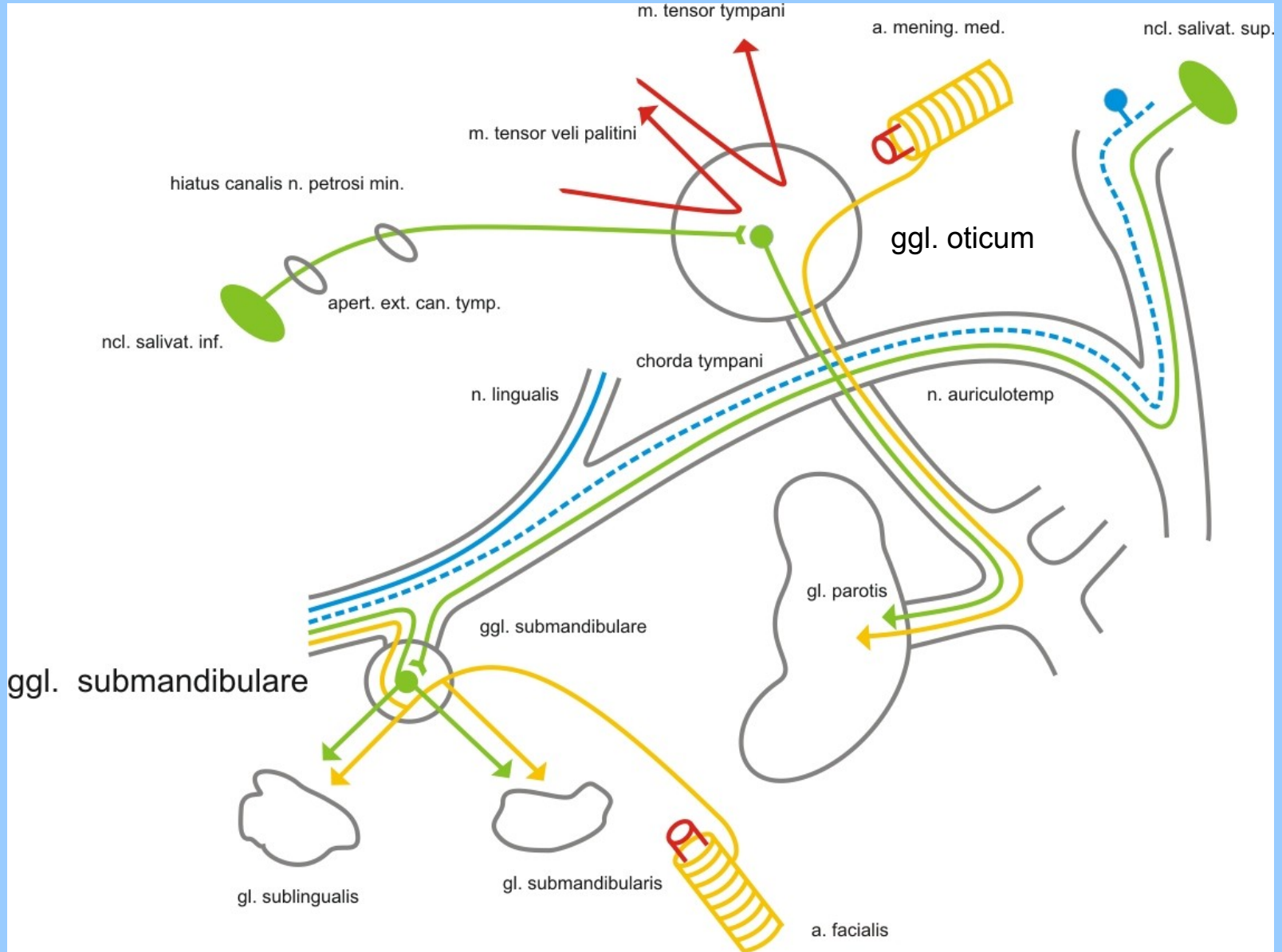
# ggl. pterygopalatinum



n. V/3 - n. mandibularis

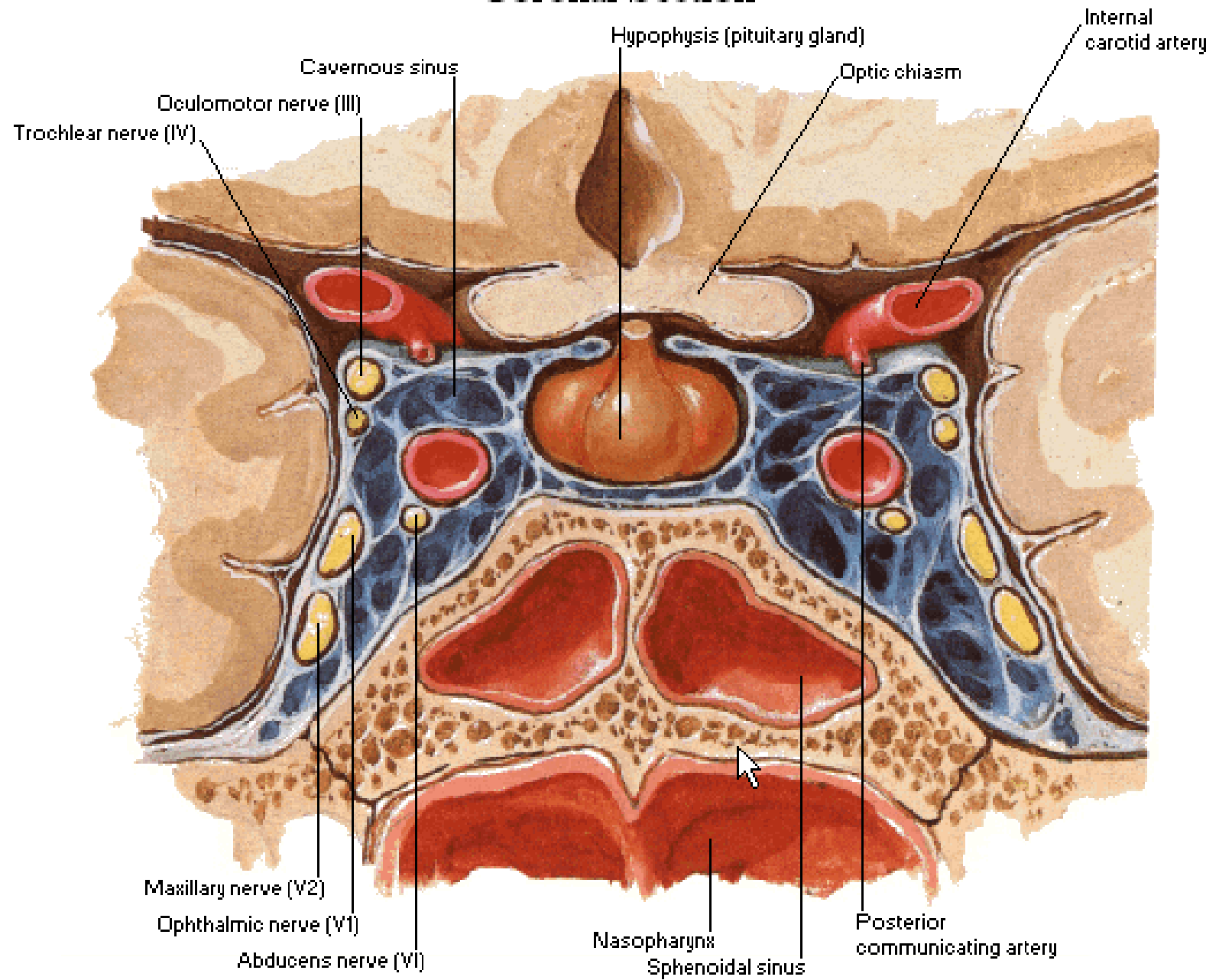


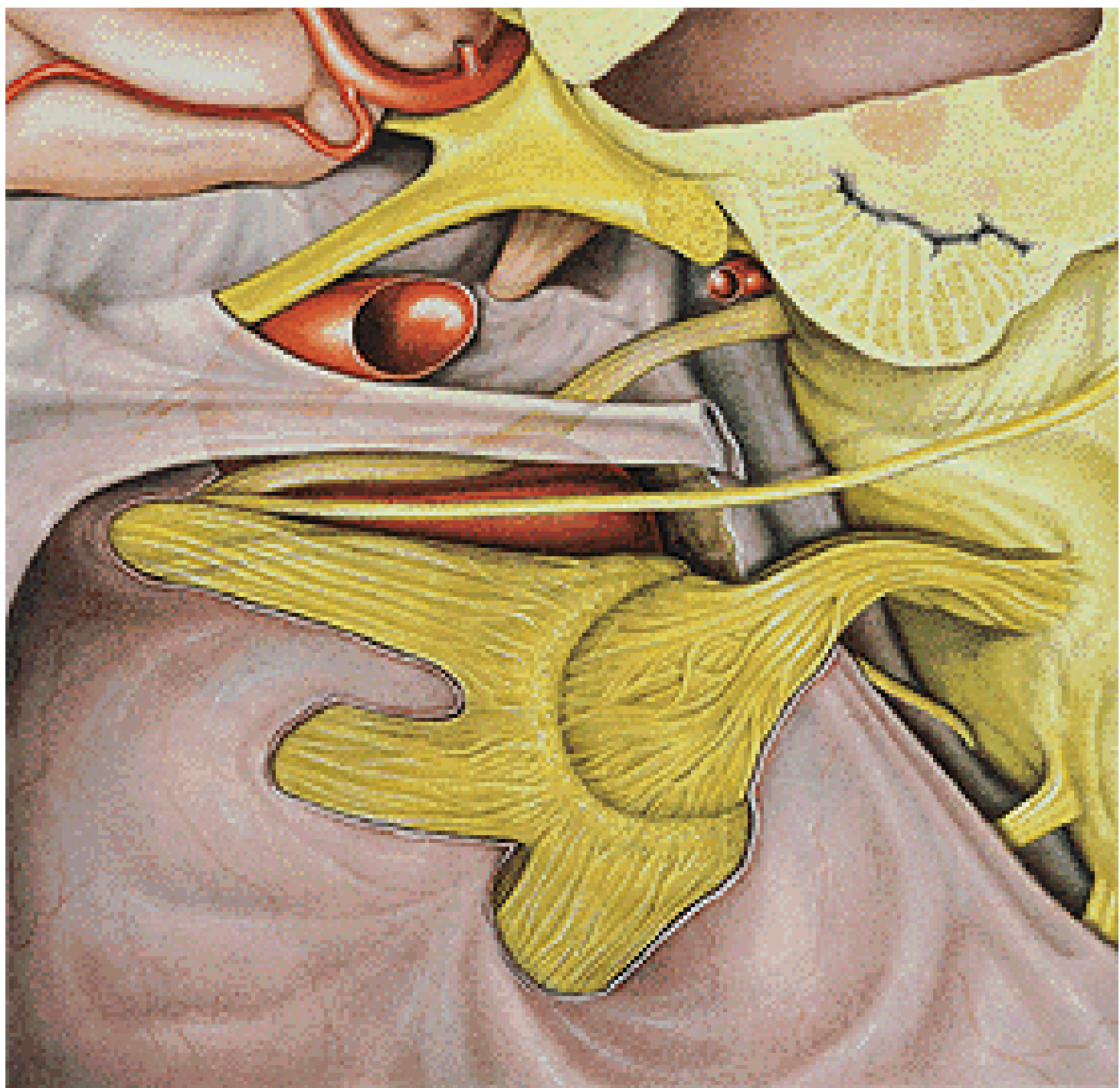
# Ggl. oticum et submandibulare

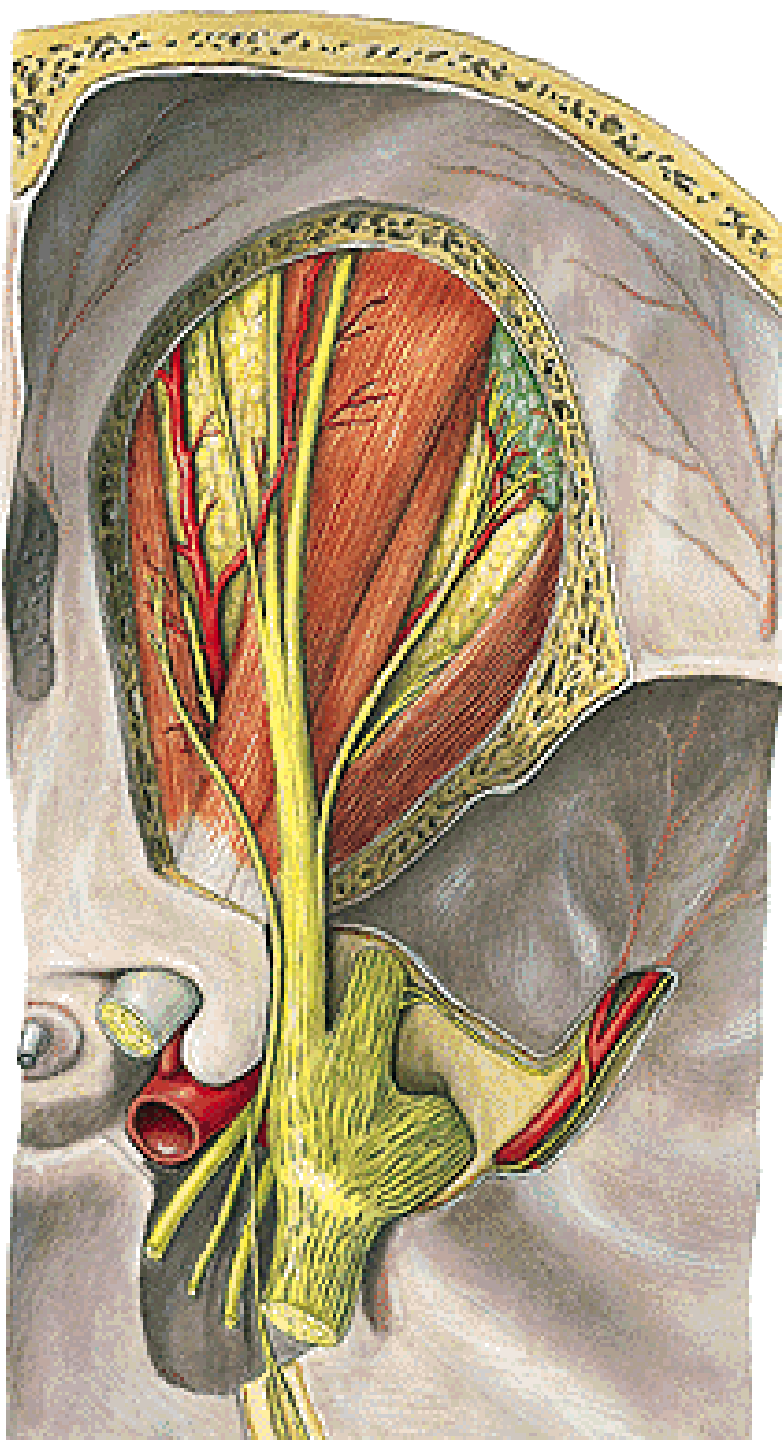


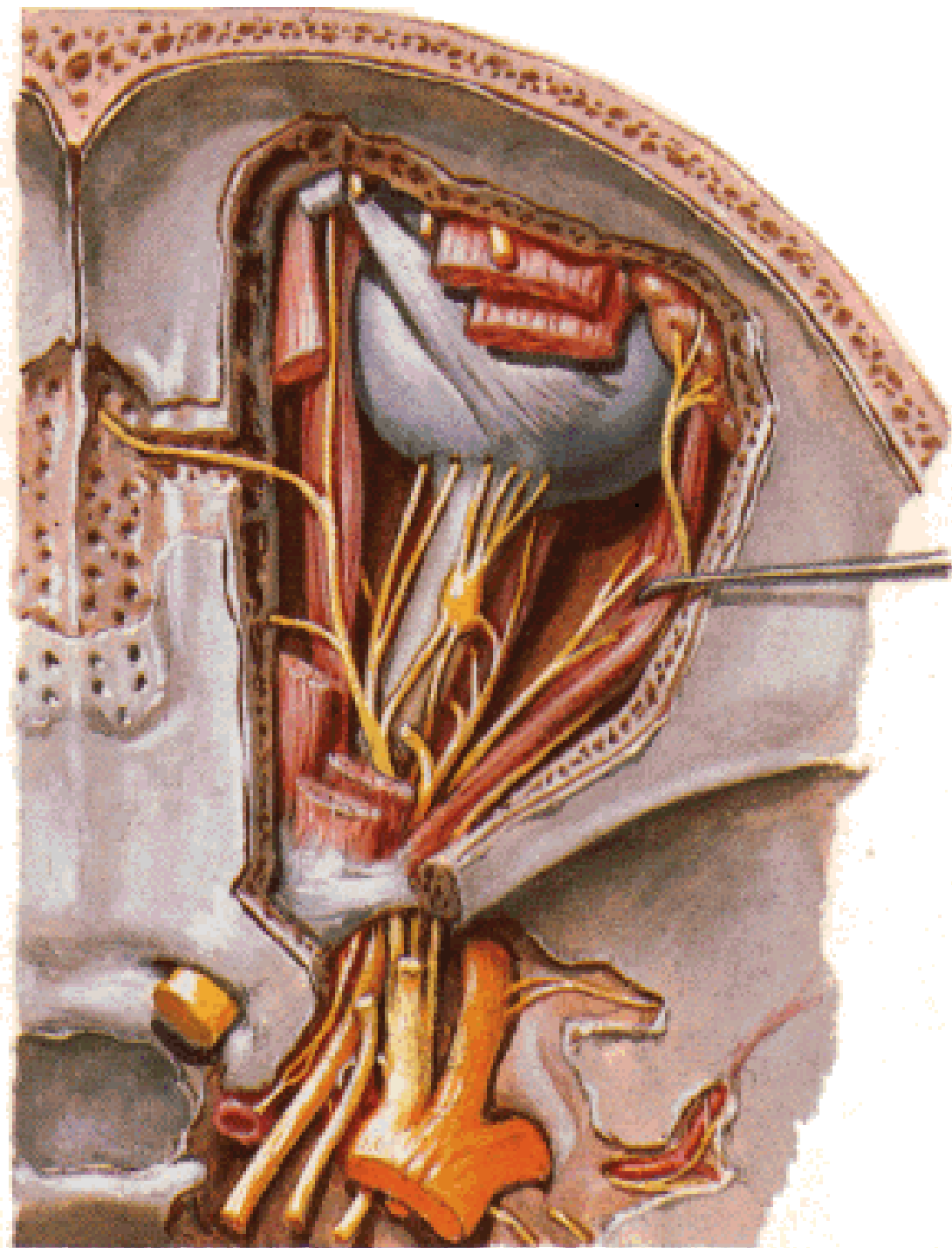
# Cavernous Sinus

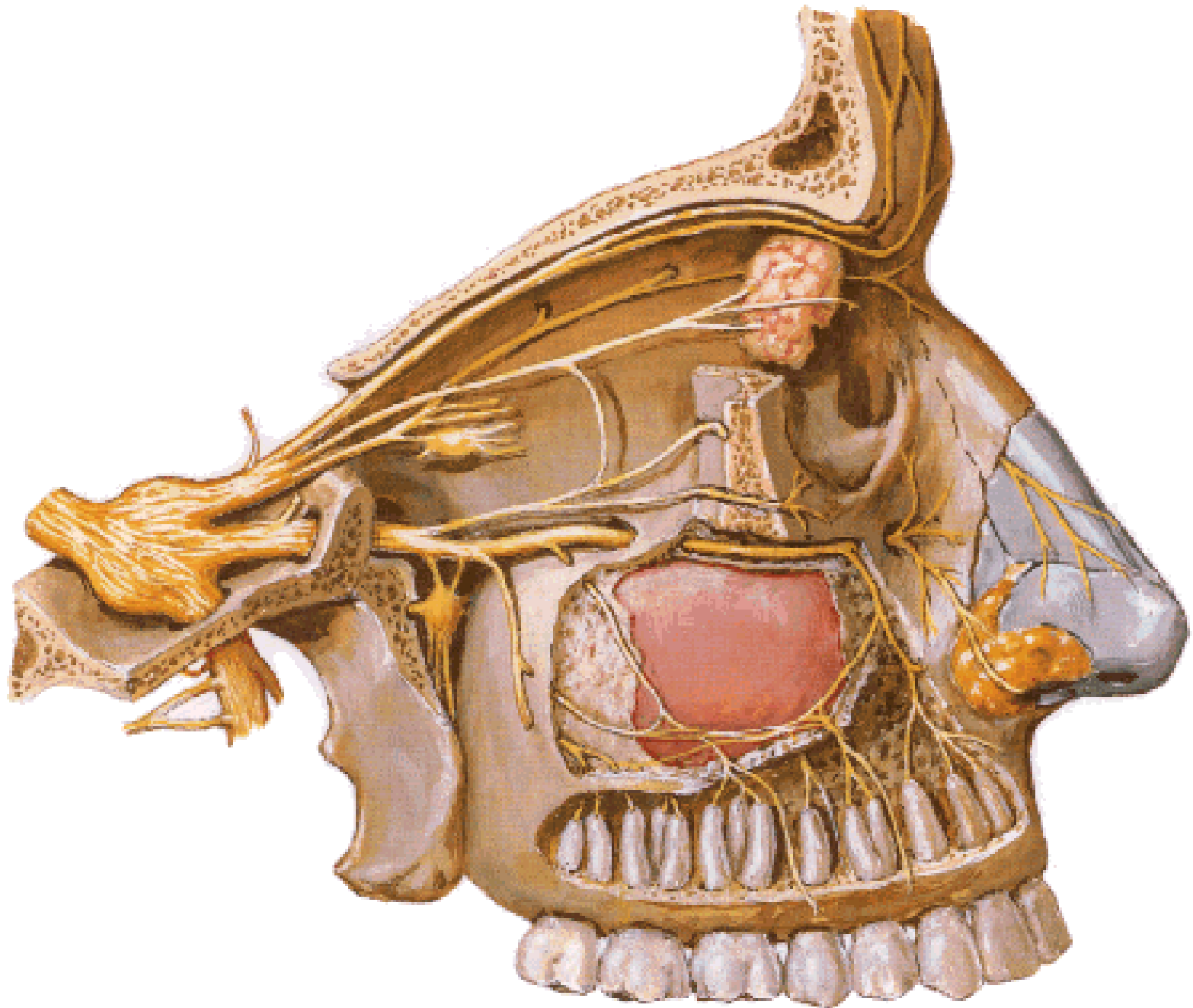
## Coronal Section



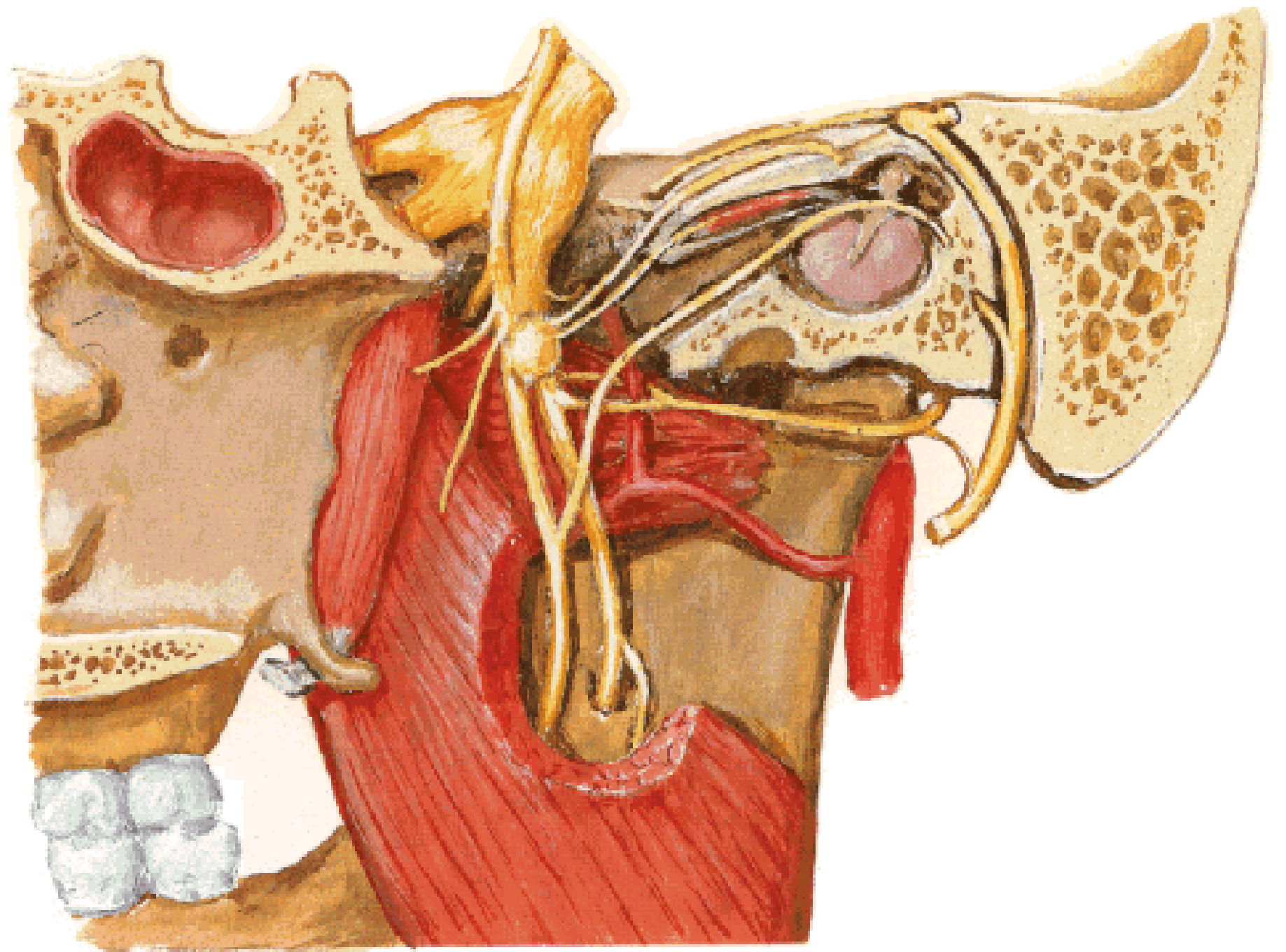




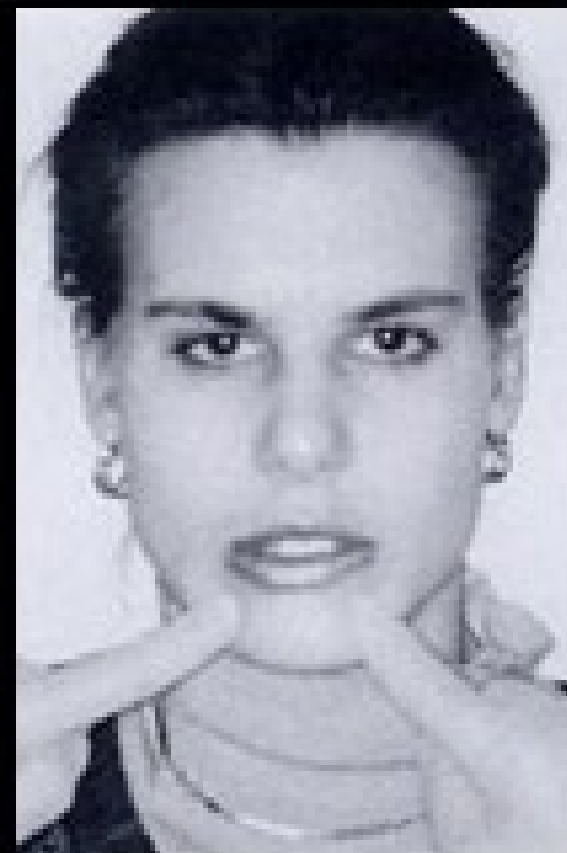


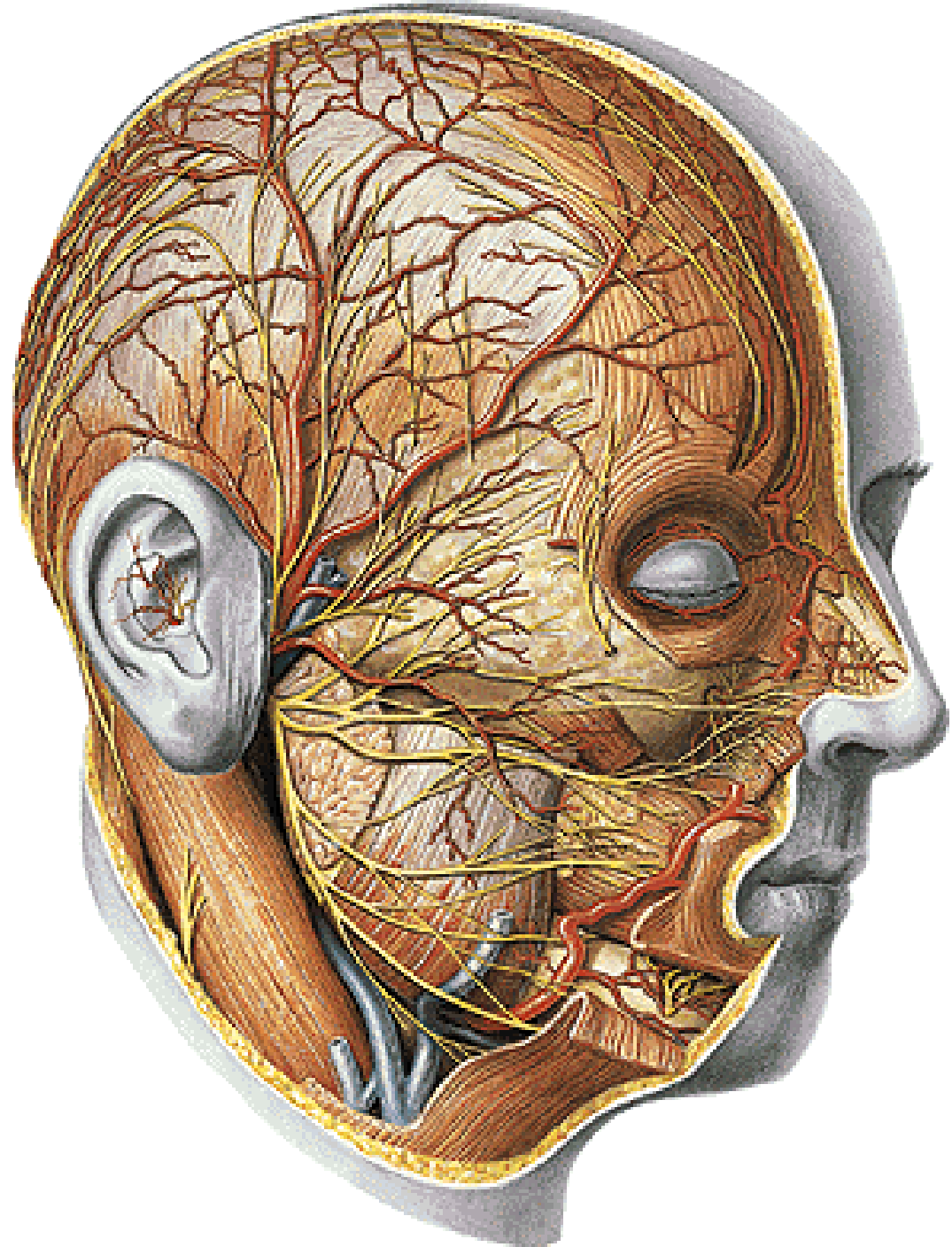


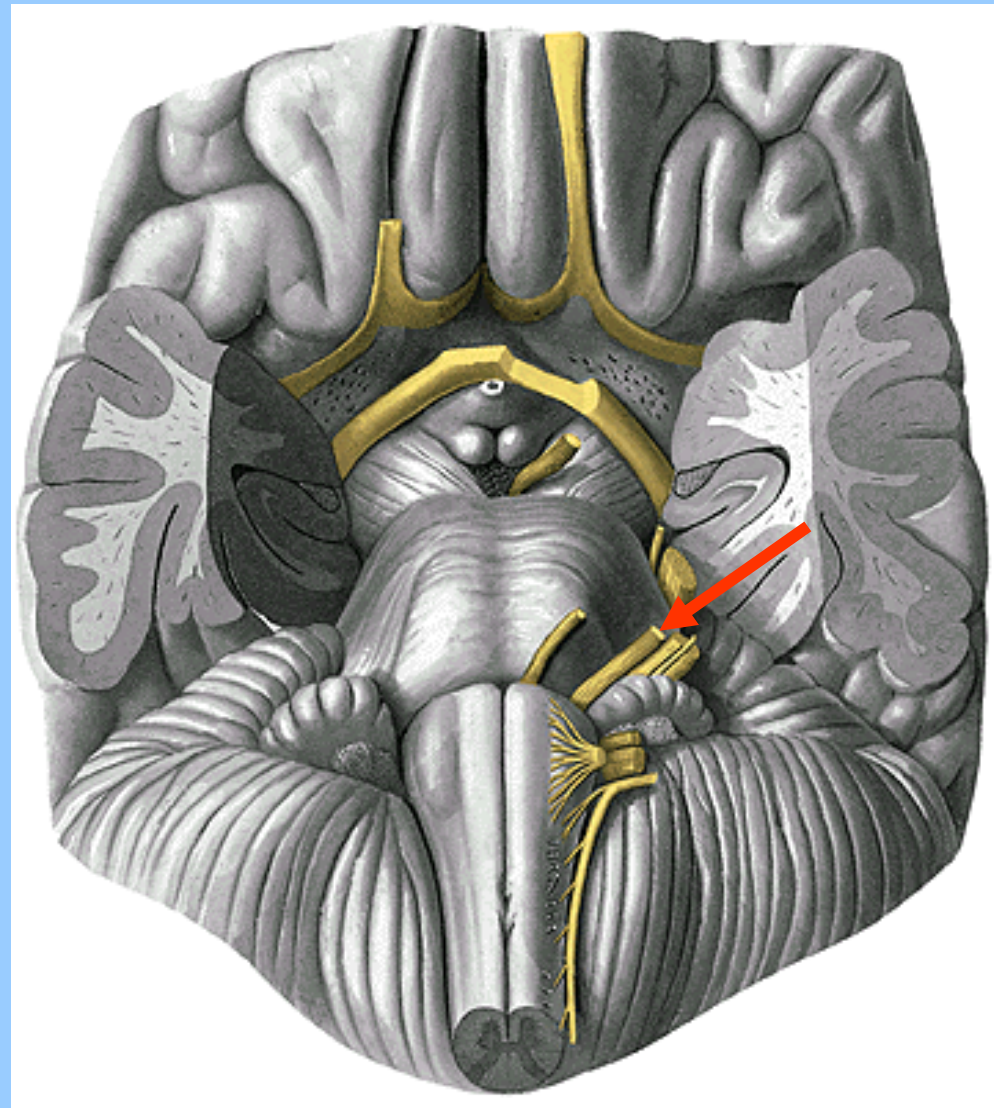
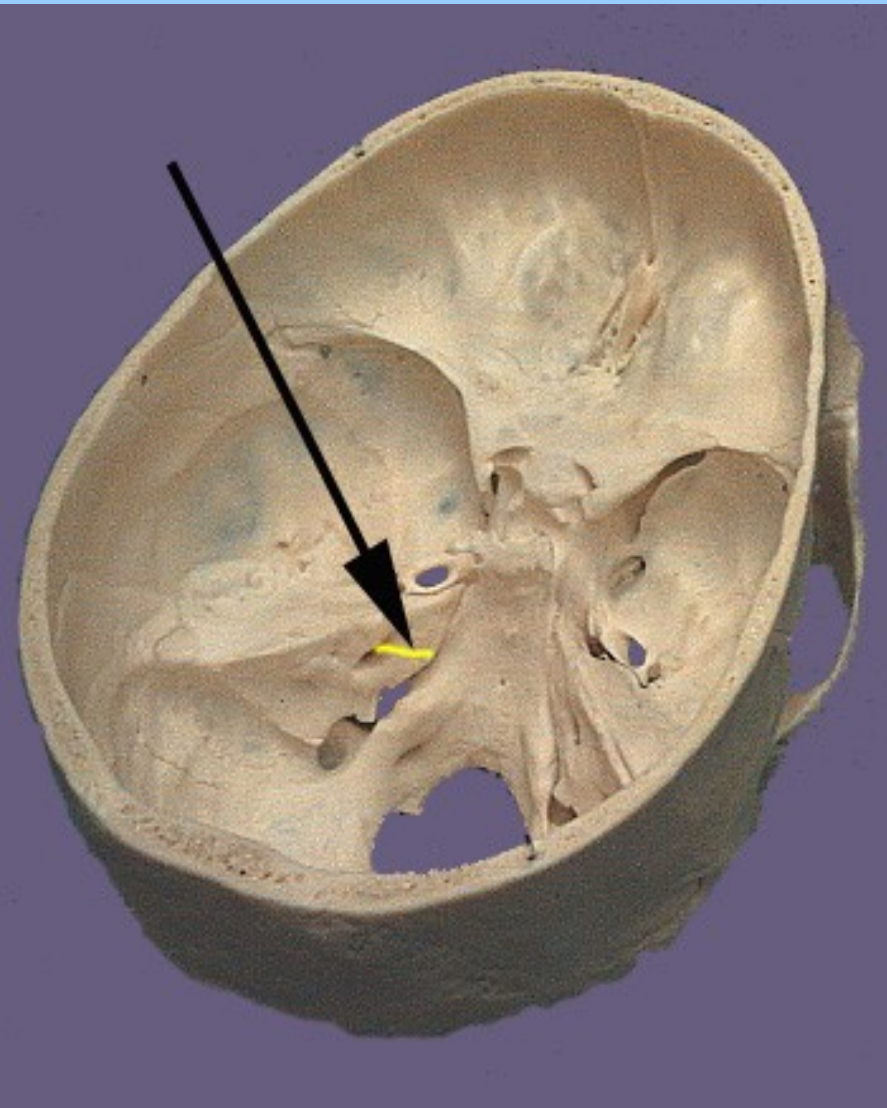




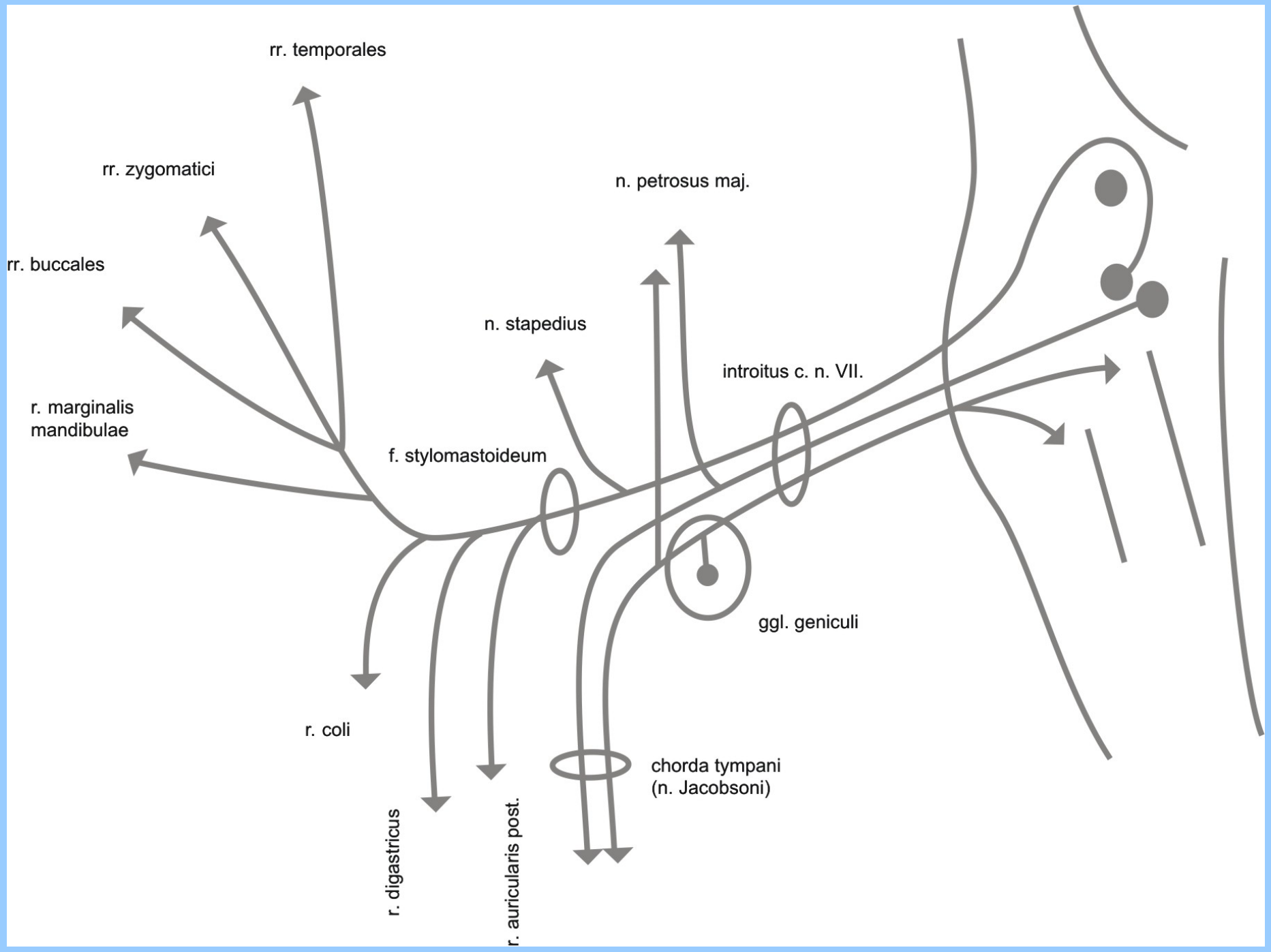
# Výstupy 3 hlavních větví n. V.







n. VII.



rr. temporales

rr. zygomatici

rr. buccales

r. marginalis mandibulae

f. stylomastoideum

r. coli

r. digastricus

r. auricularis post.

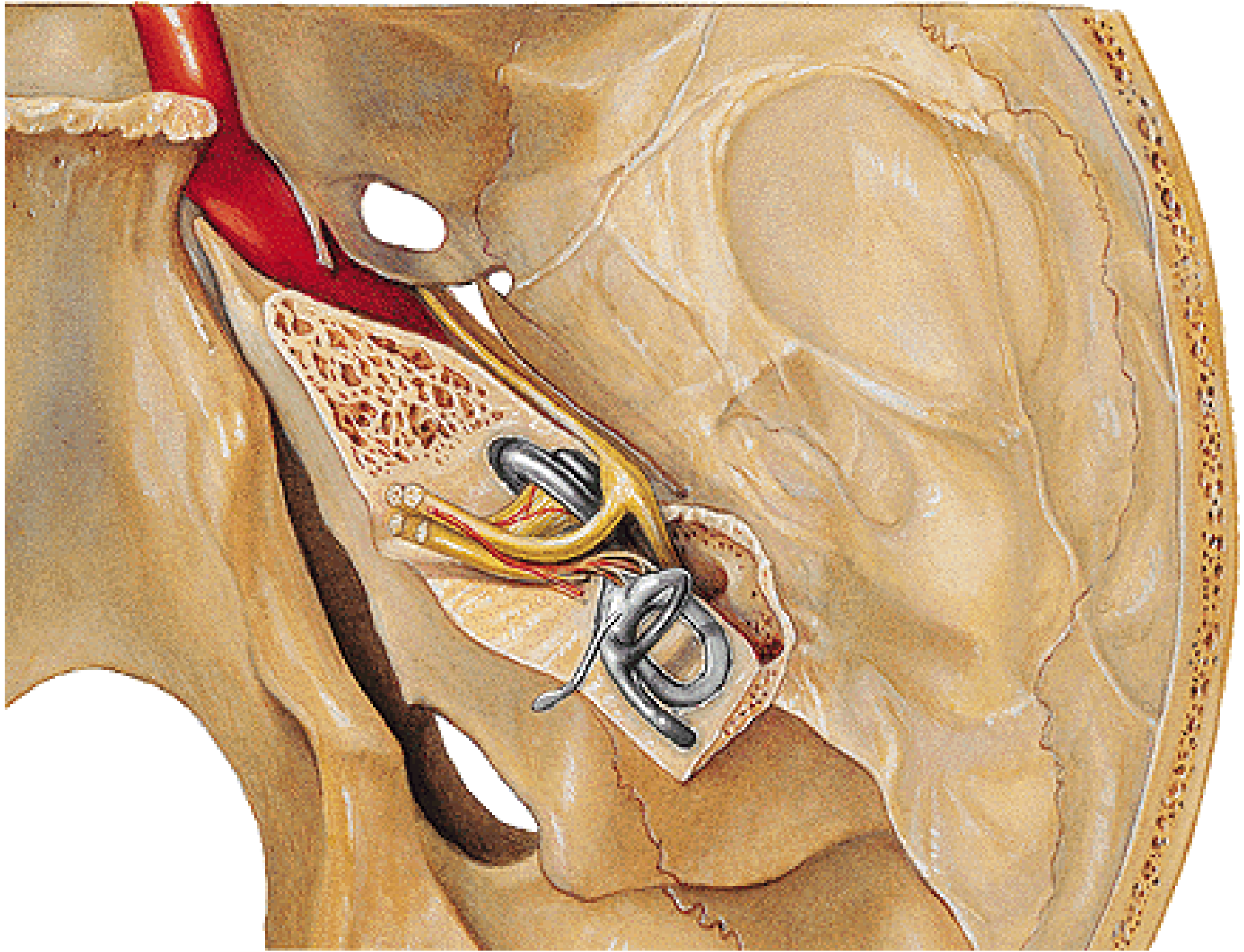
n. petrosus maj.

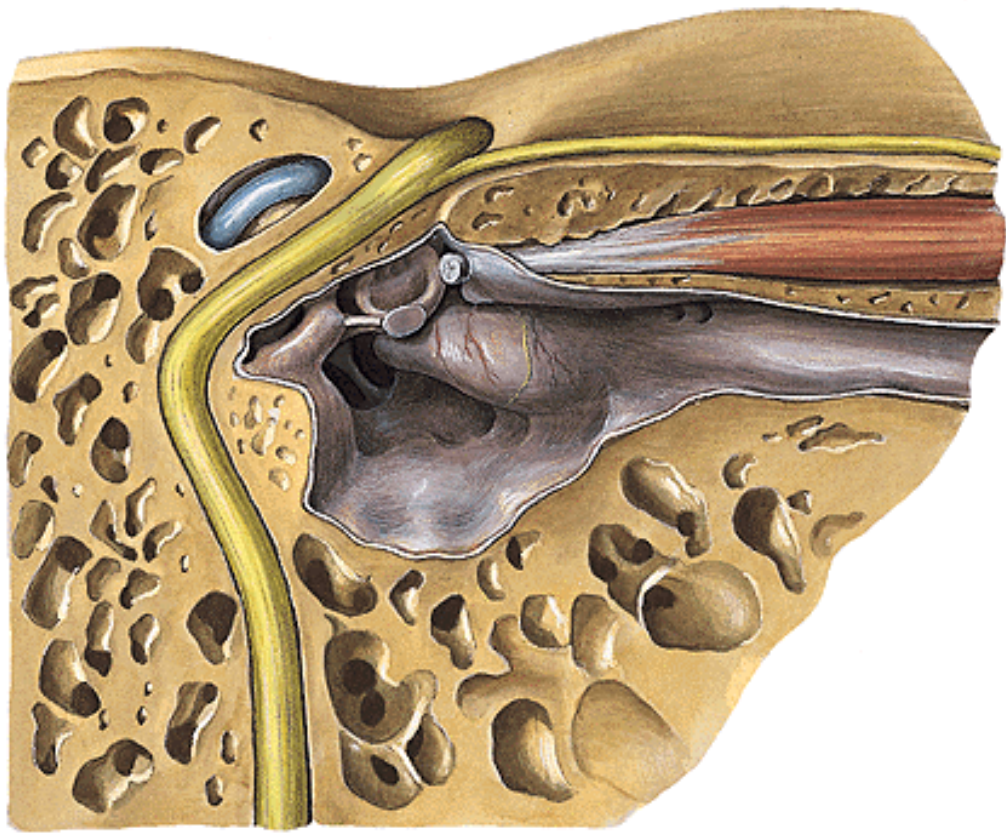
n. stapedius

introitus c. n. VII.

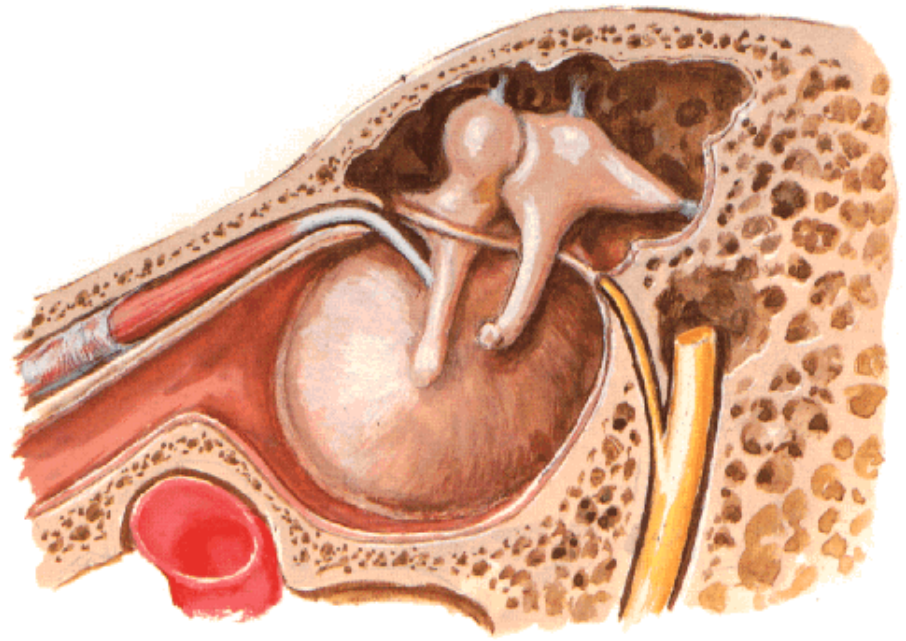
ggl. geniculi

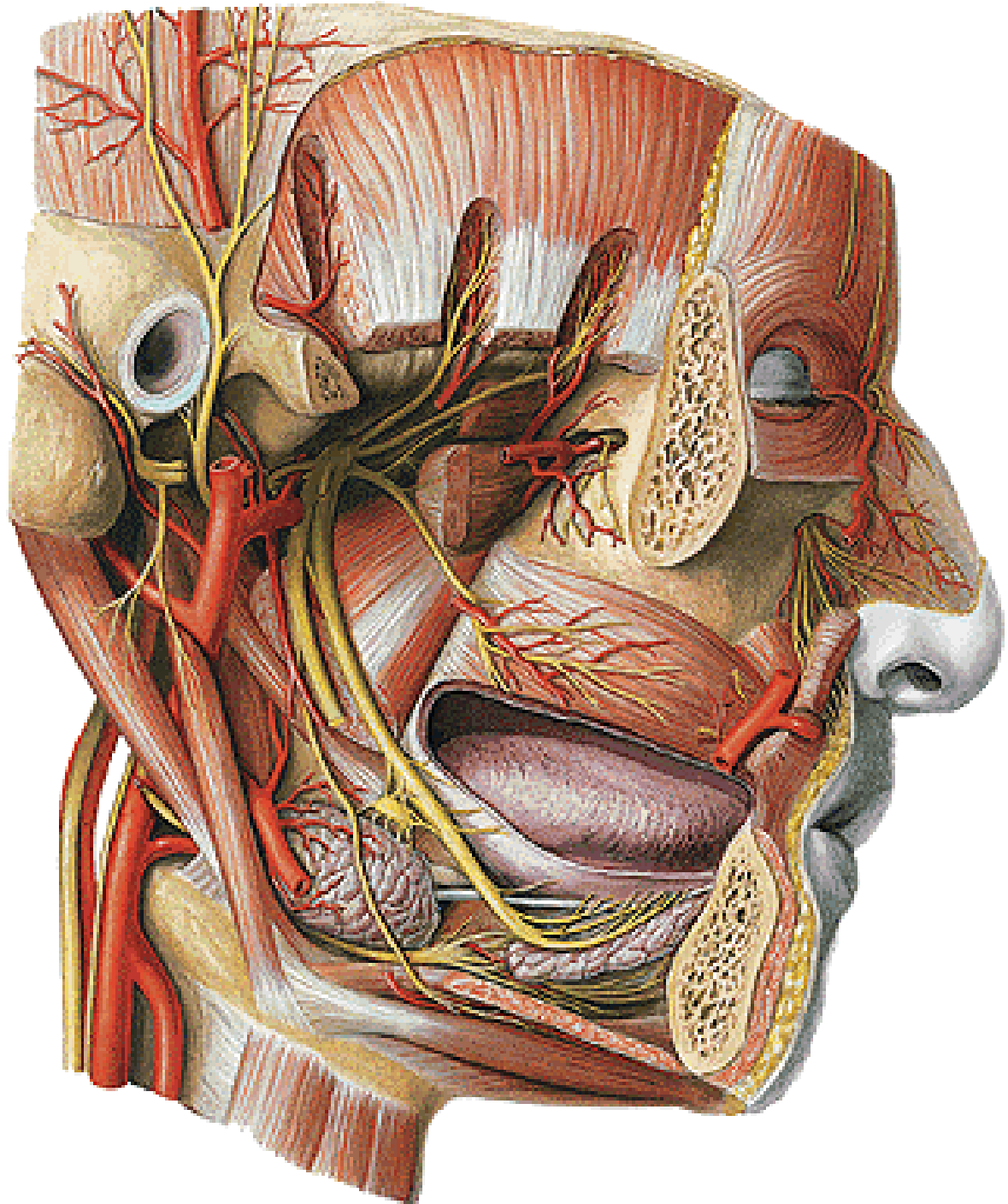
chorda tympani (n. Jacobsoni)



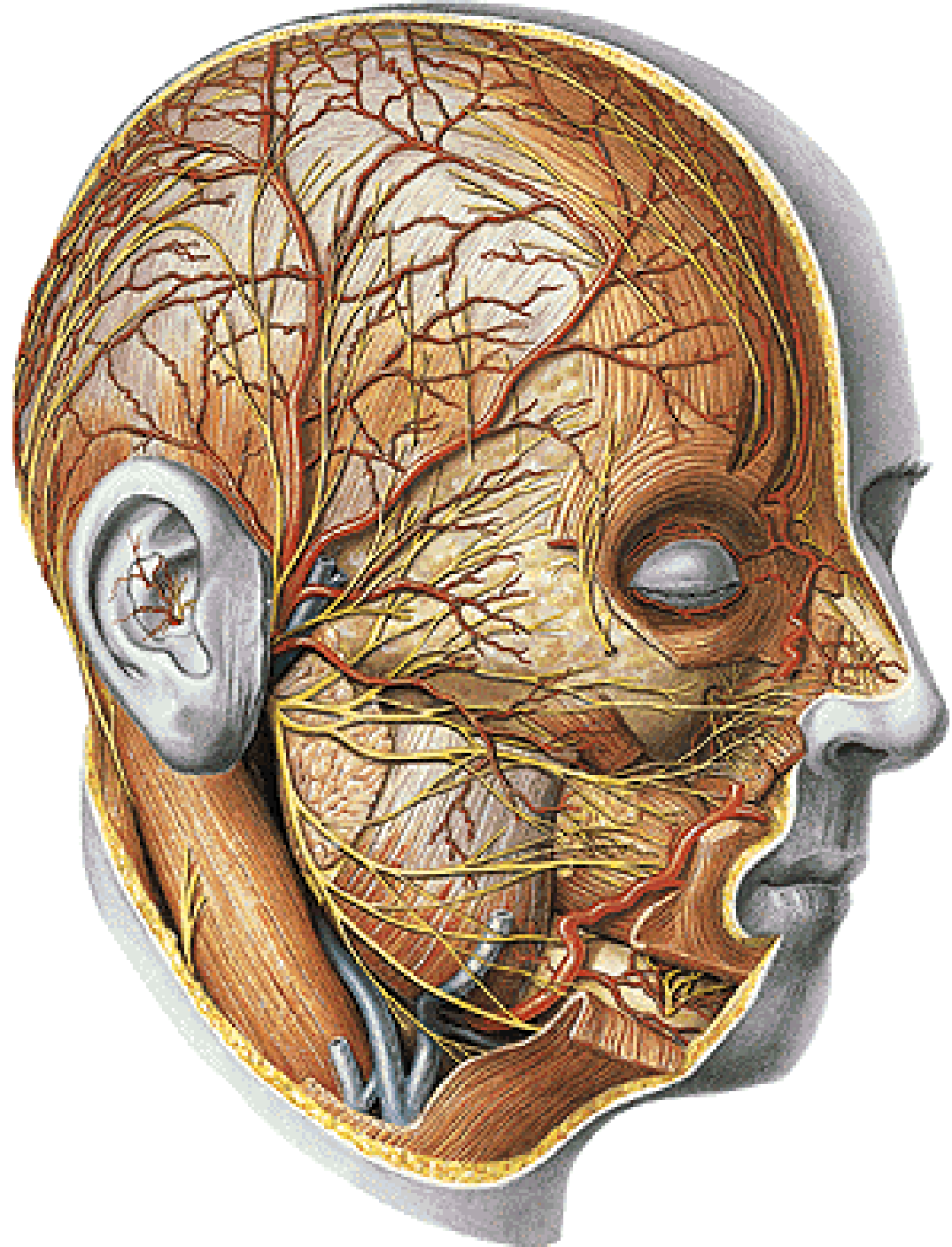


**Tympanic Cavity - Lateral Wall**  
Medial View









- Illustrations were copied from:
- **Atlas der Anatomie des Menschen/  
Sobotta. Putz,R., und Pabst,R. 20.  
Auflage. München: Urban &  
Schwarzenberg, 1993**
- **Netter: Interactive Atlas of Human  
Anatomy. Windows Version 2.0**