

# Class III.

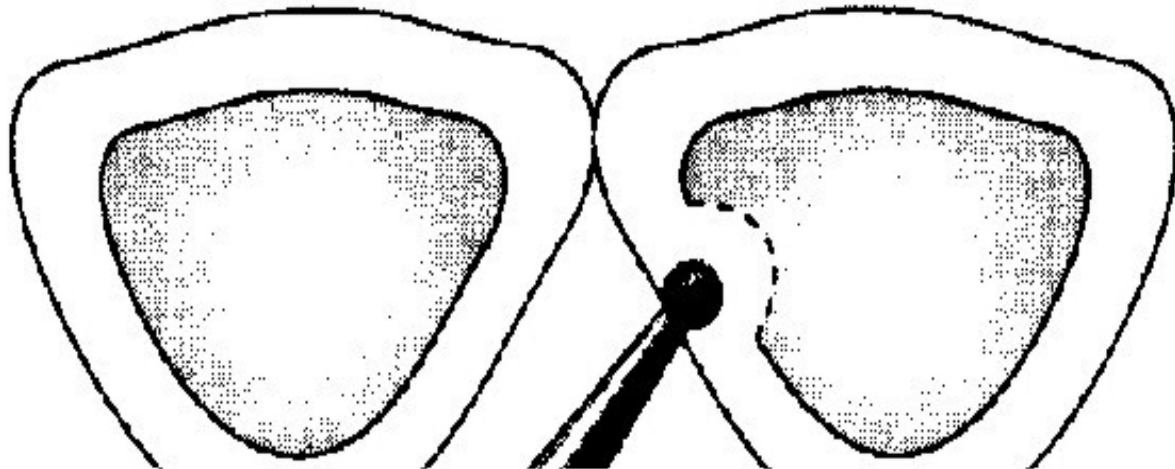
Proximal surface of frontal teeth (incisors and canines) without loss of the incisal edge



# Access to the cavity

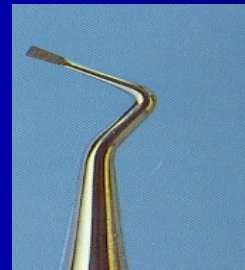


- **Through the enamel from the oral side**
- **- the round diamond, obliquely from the side of the neighboring tooth**
- **Removal of old filling**
- **Separation of teeth using wooden wedges can be helpful**
- **Removal of hyperplastic gingiva**



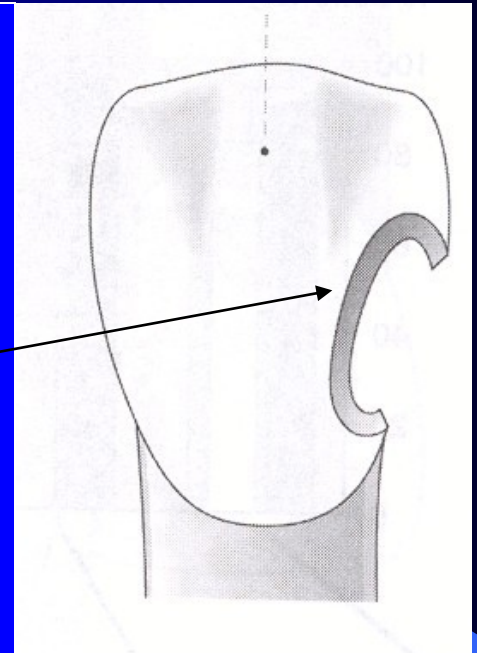
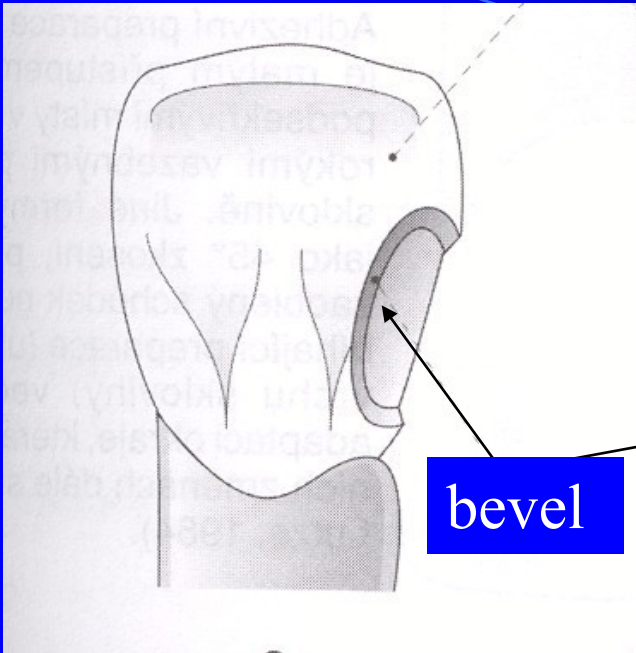
# Cavosurface margin

- 
- The size of the cavity depends on dental caries, do not extend!!!
- Excavation of carious dentin



# Retention

- Enamel must be beveled (retentive border – shallow groove).





# Dry operating field



# Acid etching





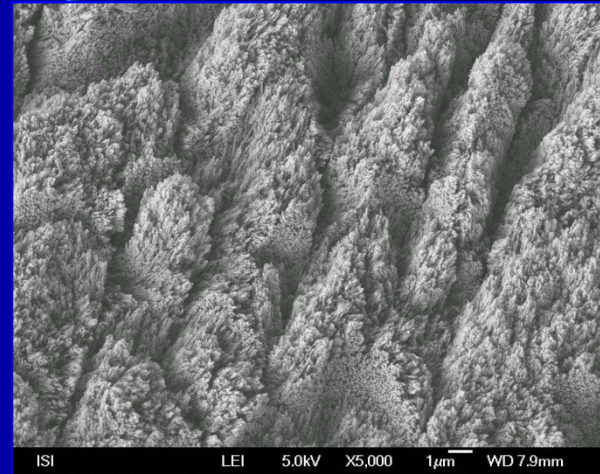
# Bonding



# Surface morphology for adhesion

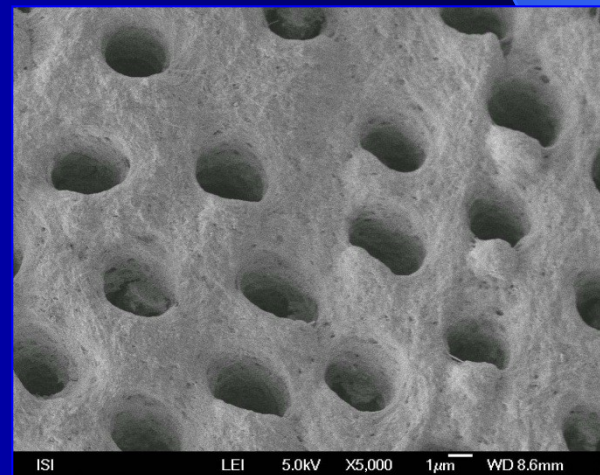
## ➤ Enamel

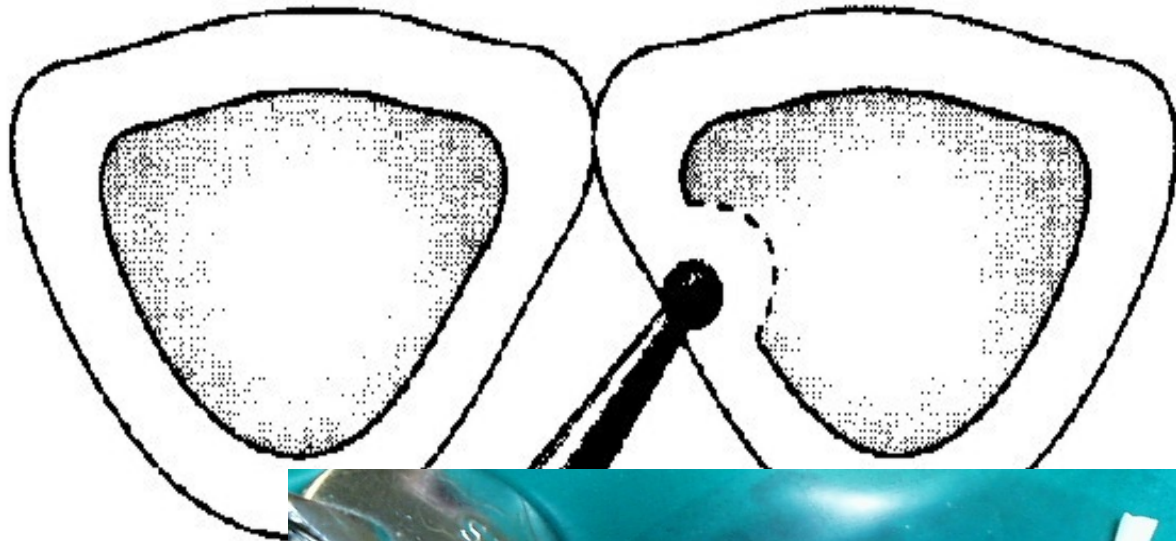
- regular surface with opened inter/intraprismatic spaces



## ➤ Dentin

- no smear layer
- opened dentinal tubules
- collagen network available







# Control of cavities



**suché pole !!!**



## Etching, rinsing, drying



# Bonding





# Cleaning of teeth



# Cavity preparation





# Etching



- During acid etching and preparation
- the protection of neiborough tooth is necessary using a metal strip

# Matrix and wedge, bonding





# Layering of composite





# Layering of composite



# Before finishing

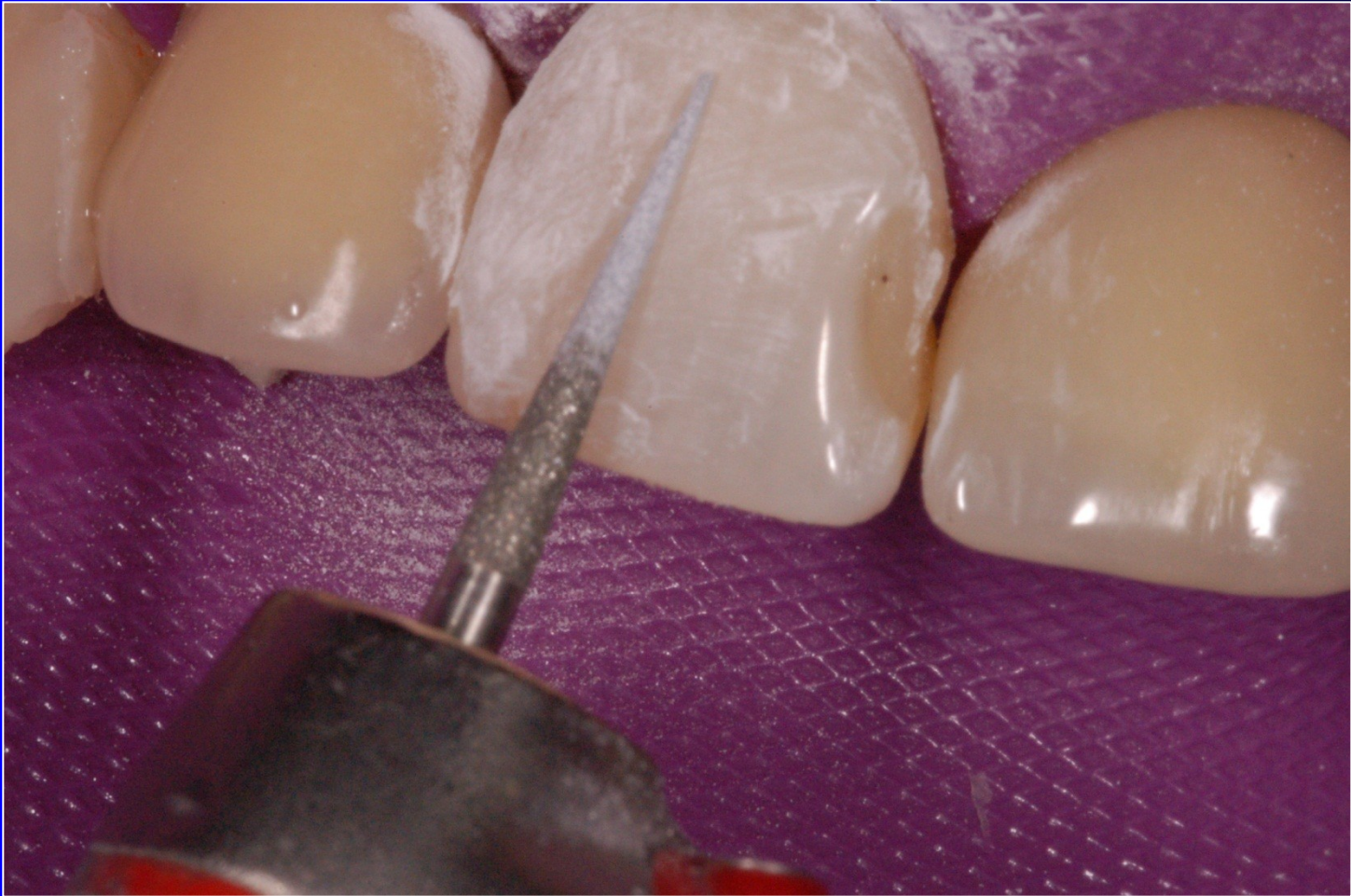




Matrix has been removed



# Finishing





# Polishing



# Finished filling





