

# Preclinical Dentistry

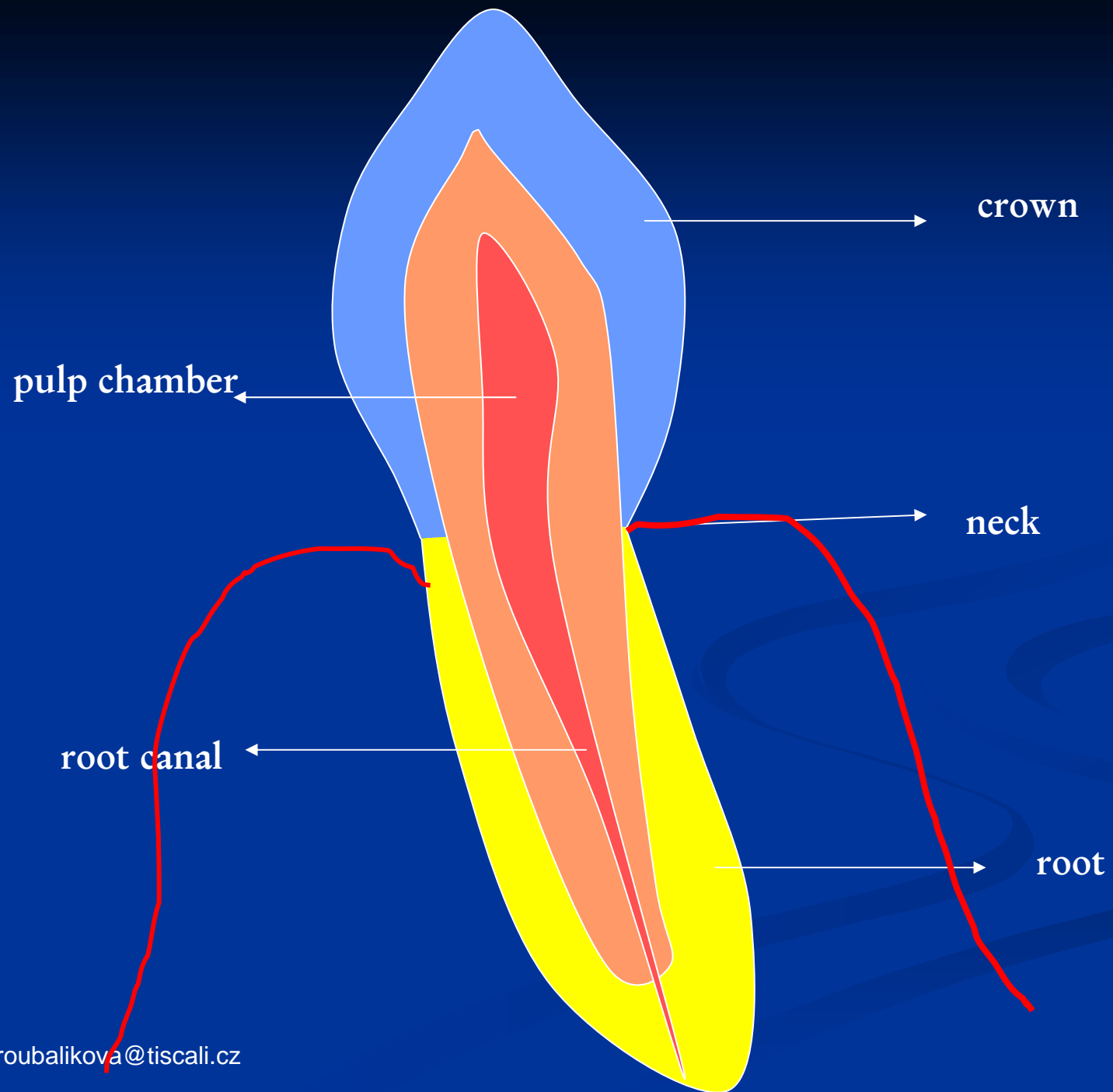
I.

**Dental Caries**

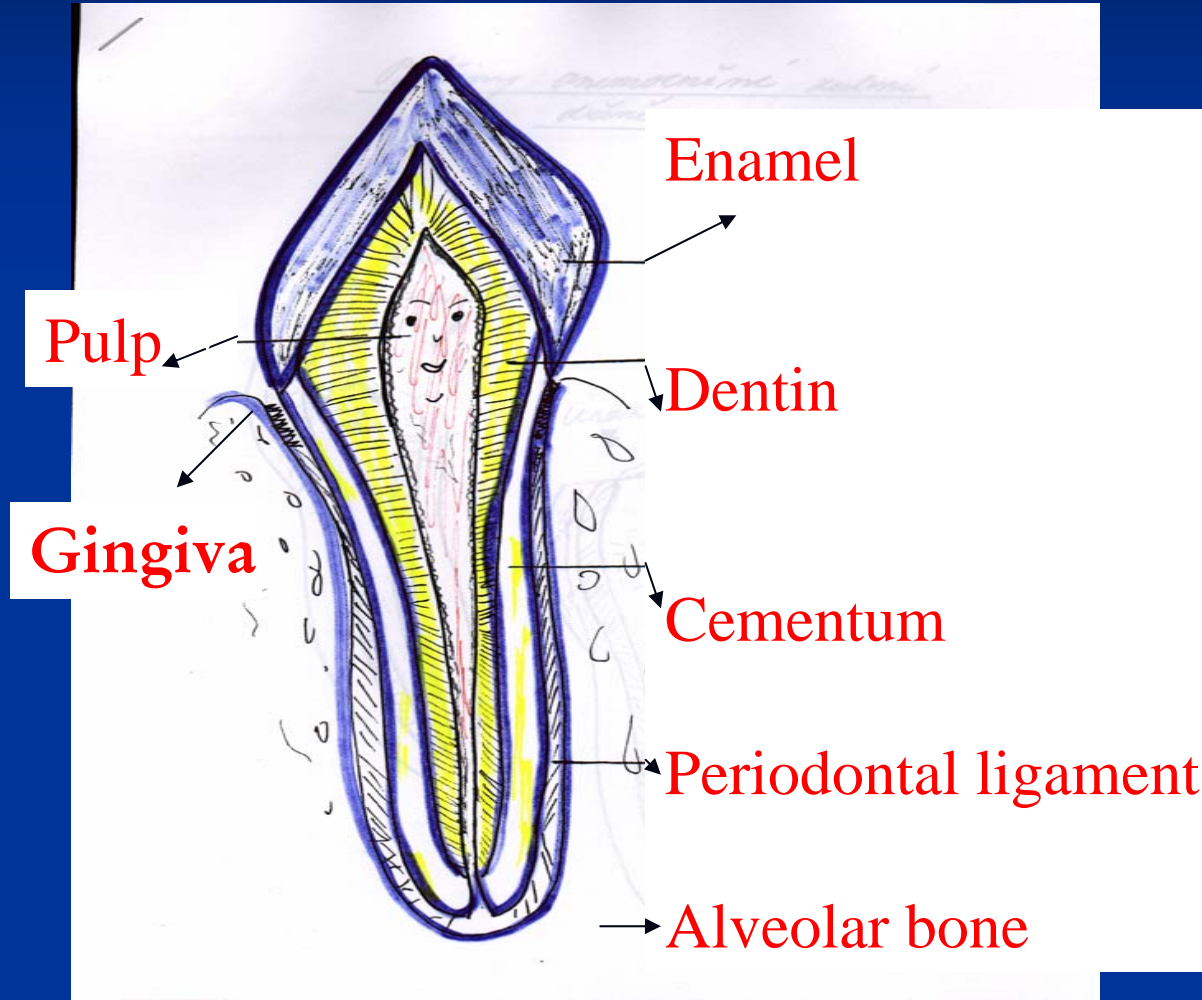
**Non carious lesions: trauma,  
erosion, abrasion, wedge shaped  
defects**

Lenka Roubalíková

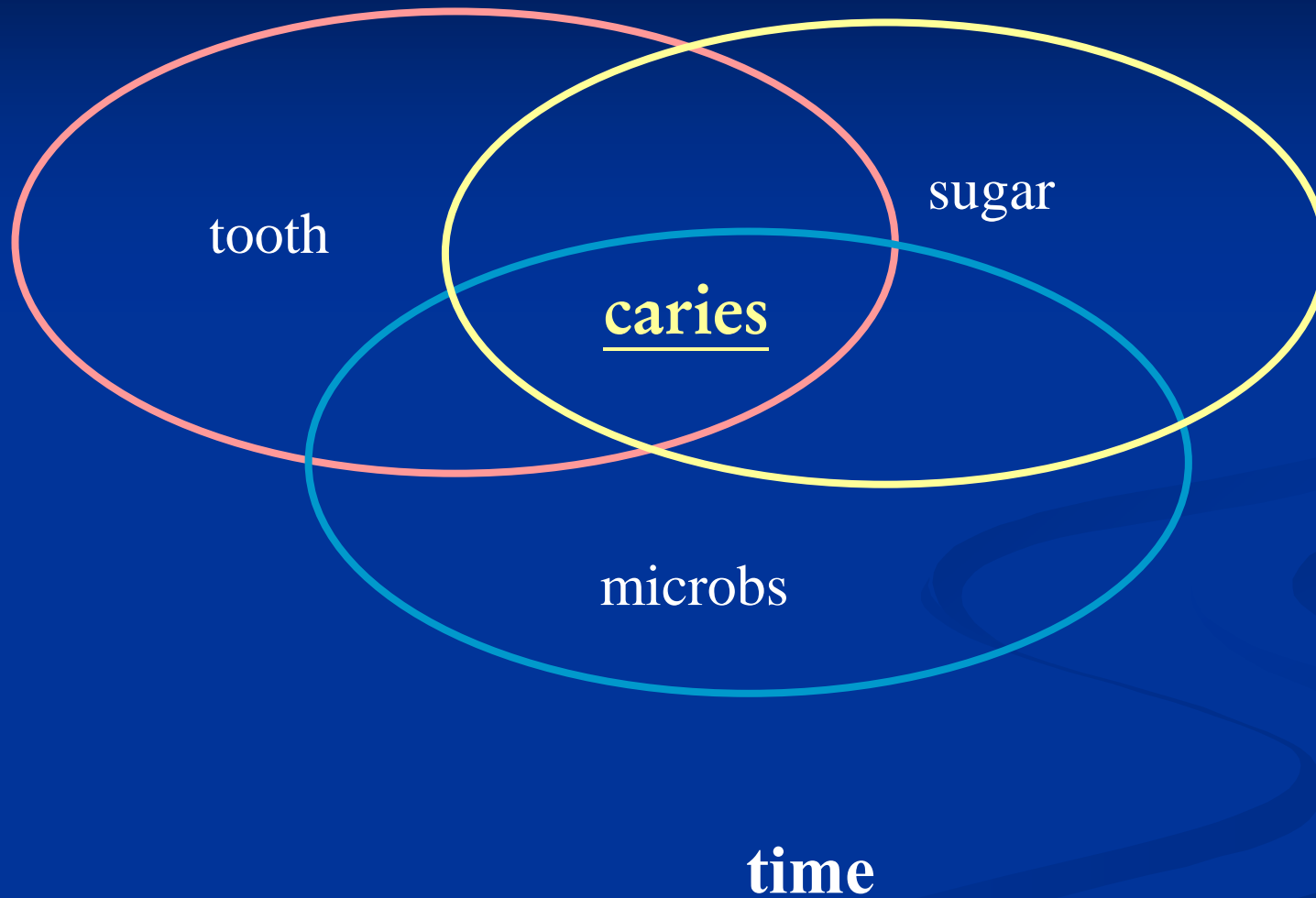
# Understanding dental caries



# Dental Tissues



# Dental caries

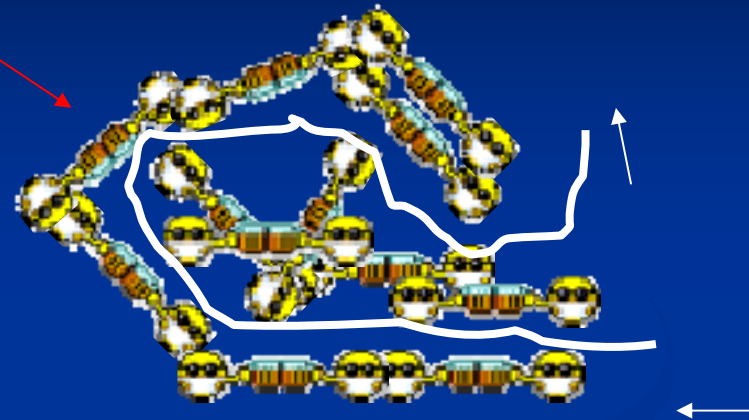


# Dental Caries

Infectious microbiological disease of the teeth  
that  
results in localized dissolution and destruction  
of  
the calcified tissues

# Biofilm – Dental Plaque

Complex community



Simple circulation



**Better conditions to survive**

# Dental Biofilm – Dental Plaque

A gelatinous mass of bacteria adhering to the tooth surface.

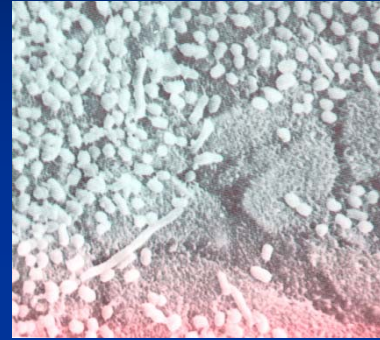
No shedding



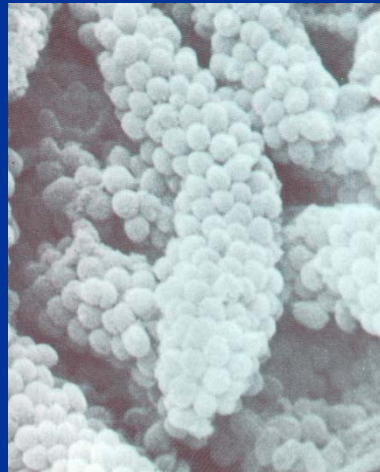


# Dental biofilm

- Adhesion



- Colonisation



- Maturation



# Sugar

Fermentable (mono-, di- tri- sacharides)



Sucrose, glucose, lactose



Acids

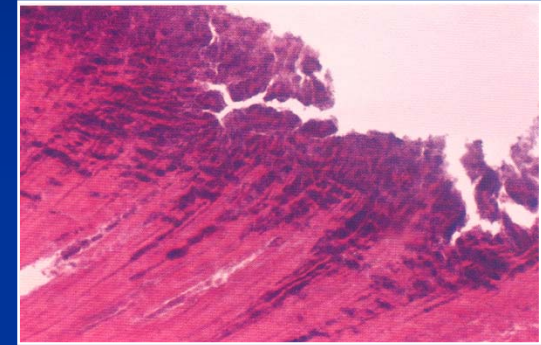
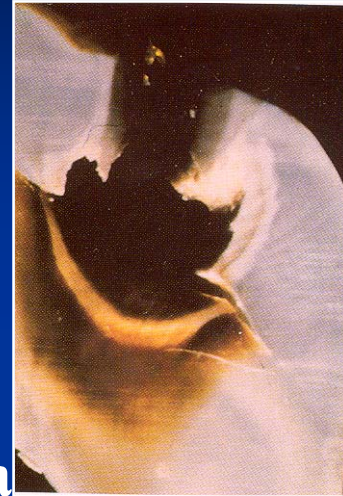


Demineralization

Ireverzibilní: kavitované

Demineralizace

Reverzibilní: Nekavitované



Čas

# Saliva

- Plaque formation
- Microbial source
- Mineral source
- Microbial clearance
- Buffer capacity

# Caries danger areas habitually (predictable) dirty places

- Pits and fissures
- Proximal surfaces
- Cervical area

No self cleaning

# Predictable clean places

- Cusps
- Proximal ridge, oblique, transverse ridge
- Incisal edge
- Buccal or oral surface upon the maximal convexity
- Proximal surface upon the contact point

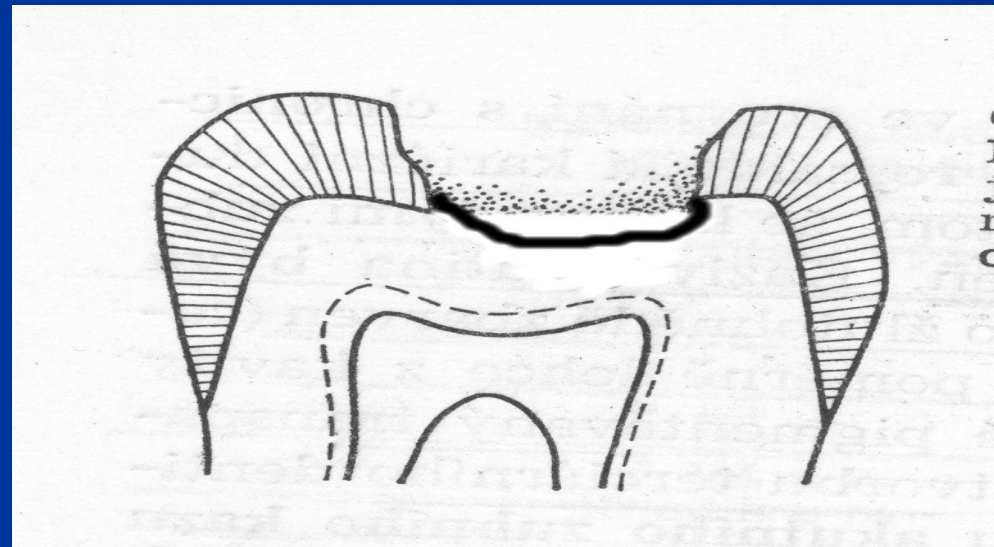
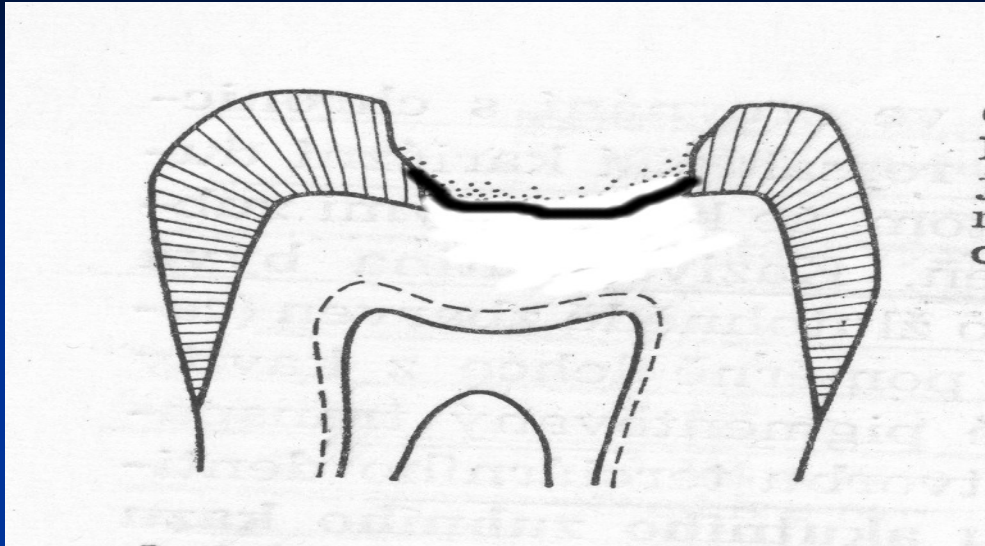
Self cleaning

# Caries - depth

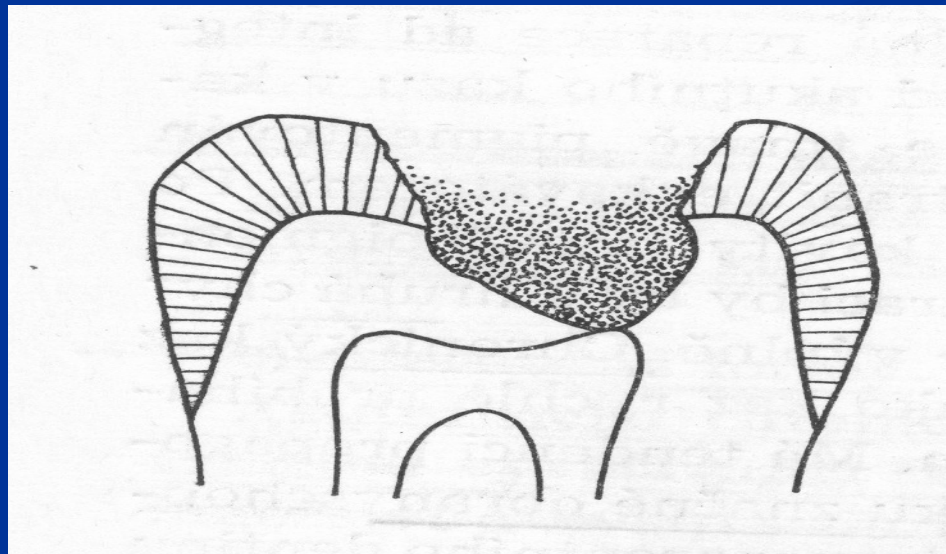
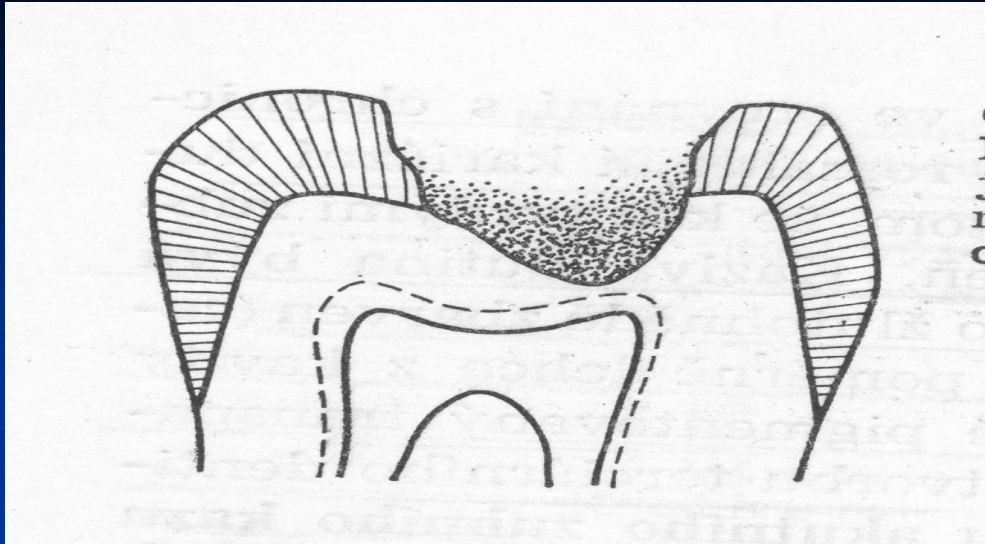
- Surface caries (*caries superficialis*)
- Middle caries (*caries media*)
- Caries close to pulp (*caries pulpae proxima*)
- Caries penetrating into the pulp (*caries ad pulpam penetrans*)



Deep caries







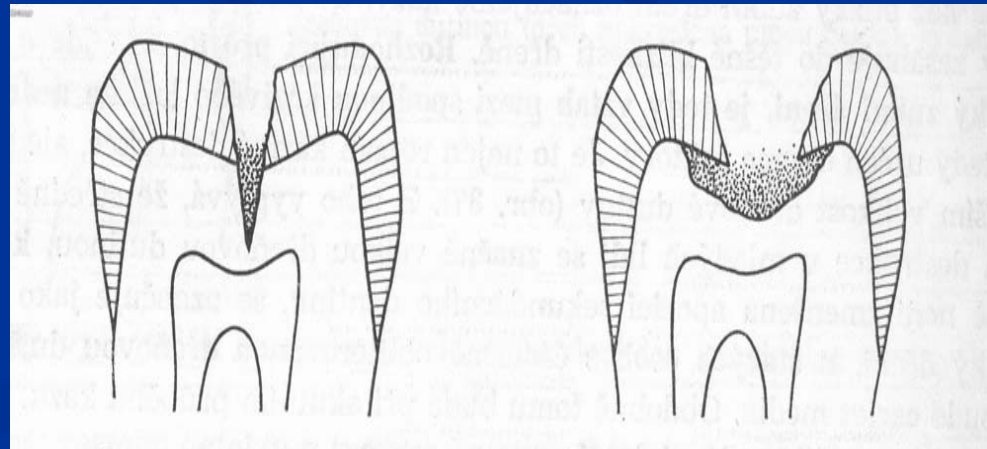
# Caries - Topography

- Coronal caries
- Root surface caries
  
- Enamel caries
- Dentin caries
- Cementum caries

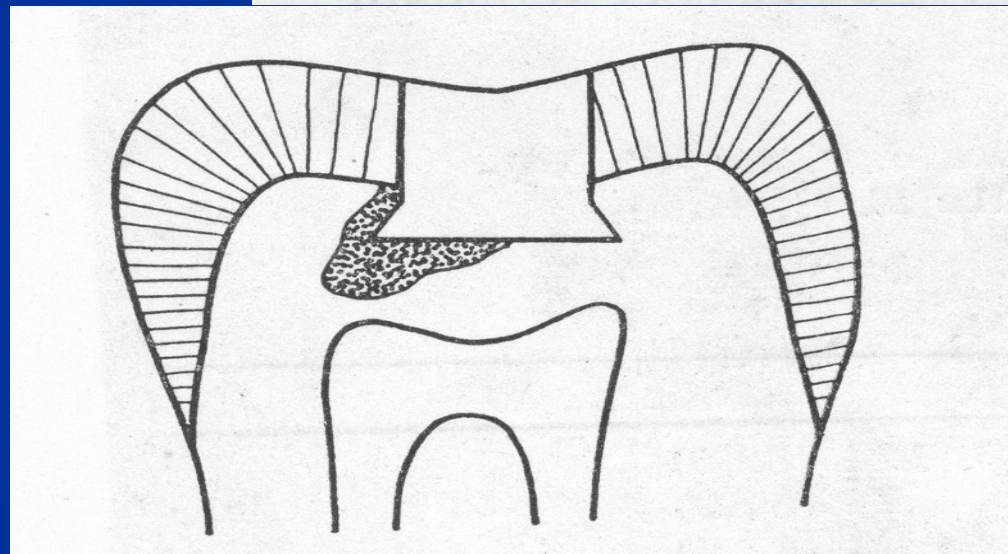
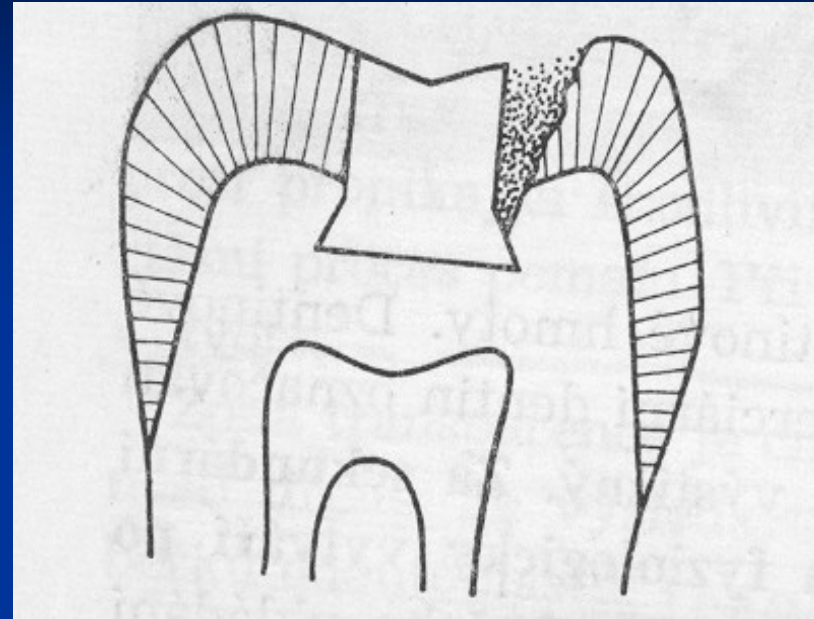
# Caries

- Acute
  - Chronic
  - Arrested
- } Acc to its history

- Penetrating
- Undermining



Primary caries  
Secondary caries  
Recurrent caries



# Patient assessment

Clinical examination  
Diagnosis

# Diagnosis of dental caries

# Investigation

- **Mirror**
  - **Sharp Probe**
  - **Illimination**
  - **Magnification**
- Dark spot, hole, defect
- **X- ray, other methods i.e. transillumination, infrared laser fluorescency**

# Dental Caries - Treatment

- Non cavitated lesion:

On molecular basis

- Dental hygiene
- Fluorides, Calcium, Phosphates
- Diet
- Antimicrobial agents



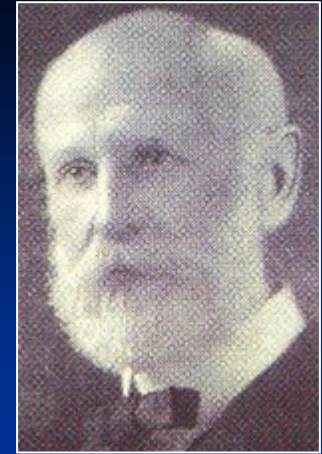
# Dental Caries - Treatment

- Cavitated lesion:

Preparation  
Filling

Drill and fill

# Preparation



Instrumental treatment

Remove caries

Leave the rest of the dental tissues

- to be restored
- to be resistant against the bite forces
- to be prevented against the recurrent caries

(Black 1914)

# **Classification of cavities according to Black**

# Class I.

Caries in fissures and pits – occlusal surfaces of premolars and molars

# Class II.

Proximal surfaces of molars and premolars

# Class III.

Proximal surfaces of incisors and canines  
without loss of the incisal edge

# Class IV

Proximal surfaces of incisors and canines  
with the loss of incisal edge

# Class V.

Cervical area



# Classification acc. to Black

- Class I.

Pit and fissure caries



# Classification acc. to Black

- Class II.

Proximal surfaces in premolars and molars



# Classification acc. to Black

- Class III.

Proximal surfaces of incisors and canines  
without  
lost an incisal ridge



# Classification acc. to Black

- Class IV.

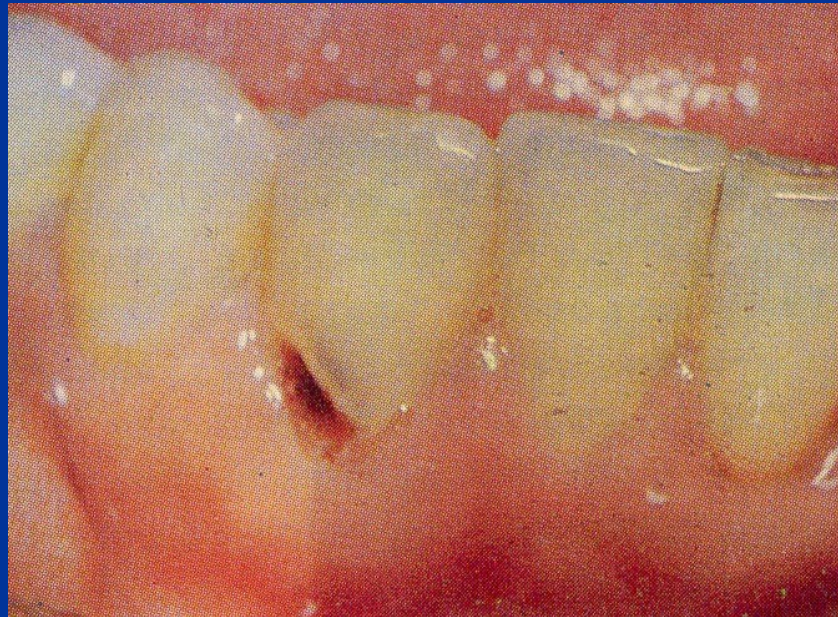
Proximal surfaces of incisors and canines with lost an incisal ridge





# Classification acc. to Black

- Class V. cervical lesions



# Charting and records

## the most important notation

- Caries /
- Filling P
- Tooth for extraction X
- Extracted tooth +
- Crown
- Pontic
- Tooth in removable denture 0

# Instruments for investigation – investigative instruments

Explorer (probe):

Sharp, straight or bow shaped:

Caries detection – light motion without any pressure: dental surfaces, fillings.

Periodontal explorer (probe): not sharp, calibrated, investigation of periodontal pockets

# Instruments for investigation – investigative instruments

- Mirror – flat or concave
- To see less available regions
- To illuminate
- To move off soft tissues (cheeks, tongue etc.)



# Instruments for investigation – investigative instruments

Tweezer

To grip various instruments and supplies.

# Instruments for cavity preparation

Hand instruments for cutting

Two main materials:

Stainless steel (loses keen edge)

Carbon steel (corrode)

Excavator

Chisel- cleaver

# Instruments for cavity preparation

Power driven instruments for cutting

- Rotary instruments

Comon design characteristics



# Shank

- The part that fits into the handpiece
- Accepts the rotary motion from the handpiece
- Provides a bearing surface to control the alignment and concentricity of the instrument

# Straight handpiece shank

- Simple cylinder
- held in the handpiece in a metal chuck

# Latch angle handpiece shank

- Shorter length – access to posterior regions

Handpiece – contra angle, metal bur tube.

The end of the instrument fits into D-shaped socket at the bottom of the bur tube. The *instrument* retained by a retaining latch that slides into the groove found at the shank end of the instruments.

# Friction grip handpiece shank

Smaller design, simple cylinder.

Held in the handpiece by friction in plastic or metal chuck.

# Neck design

Intermediate portion of an instrument that connects the head to the shank  
Tapered, shorter or longer.



# Head design

Burs – cut of steel or tungsten carbide

Diamond (diamond burs)– covered with the diamond bort

# Head design

## Burs classification systém

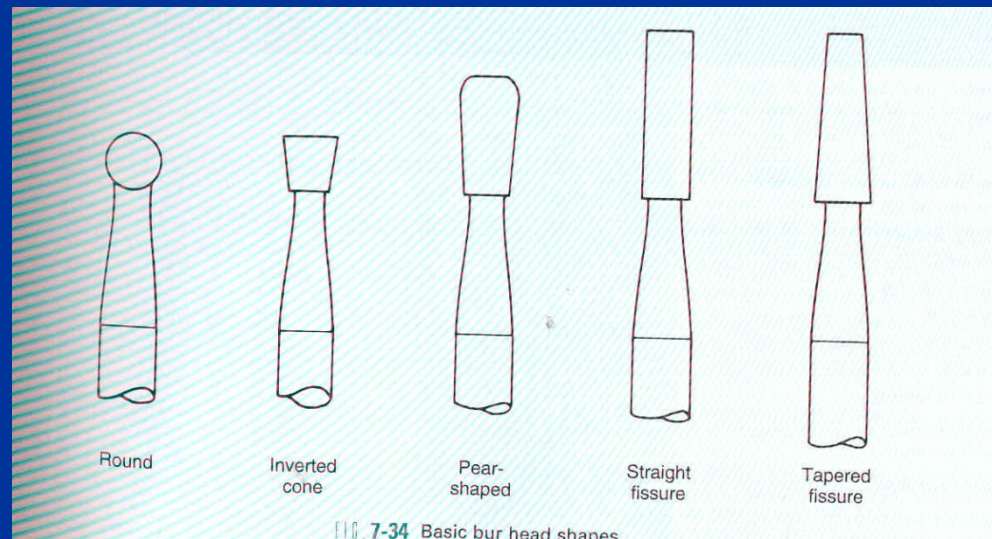
Round

Inverted cone

Pear shaped

Straight fissure

Tapered fissure



# Bur blade design

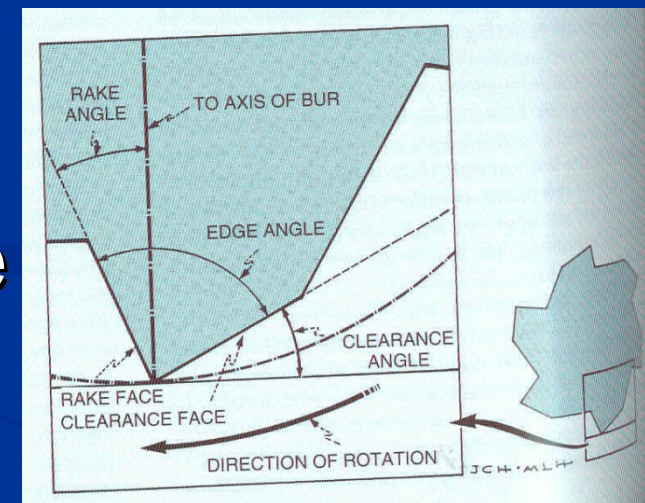
- Rake face (towards the direction of cutting)
- Clearance face

Rake angle – slightly negative

Edge angle – appr  $90^\circ$

Clearance angle

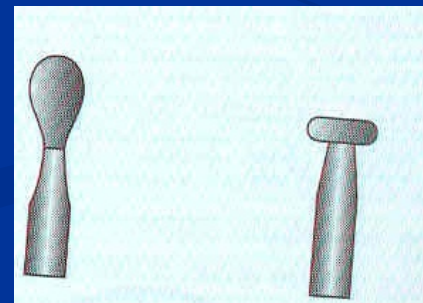
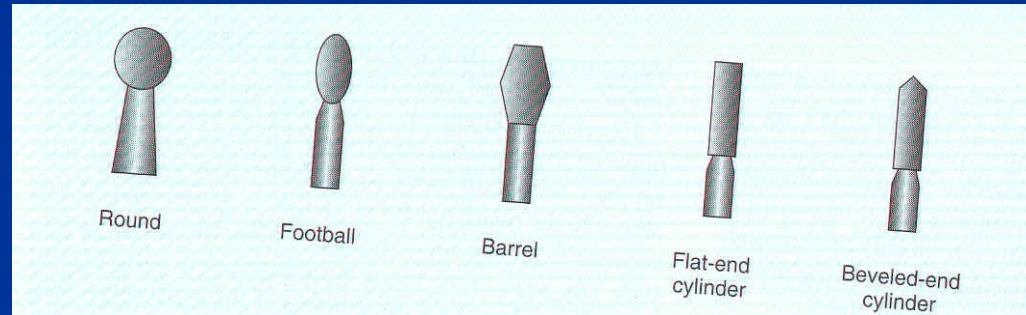
Clearance face rounded or two surfaces.



# Head design

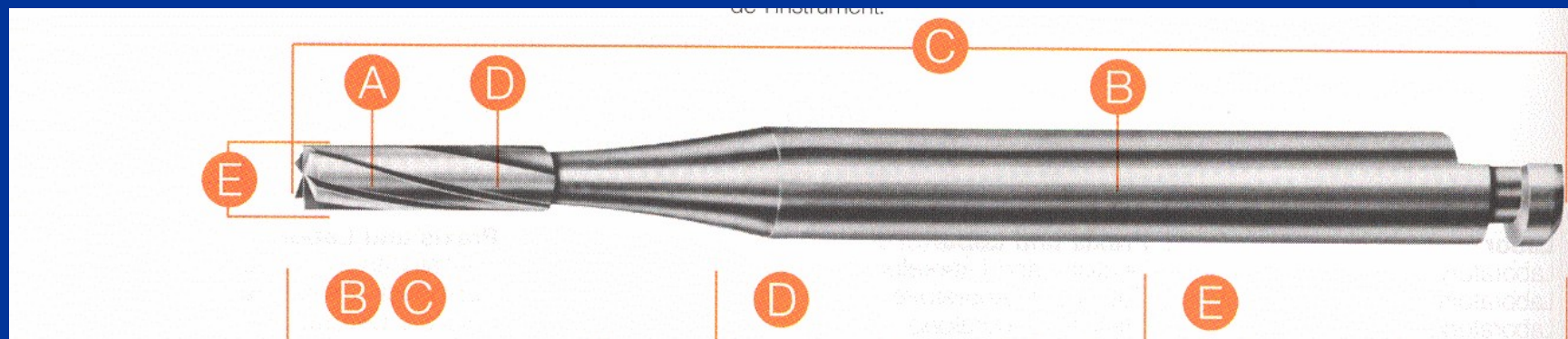
## Diamond classification system

Round  
Inverted cone  
Pear shaped  
Cylinder  
Taper  
Lens  
Needle etc.



# Preparace strojová - nástroje

Rotační nástroje jsou konstruovány podle normy ISO 6360

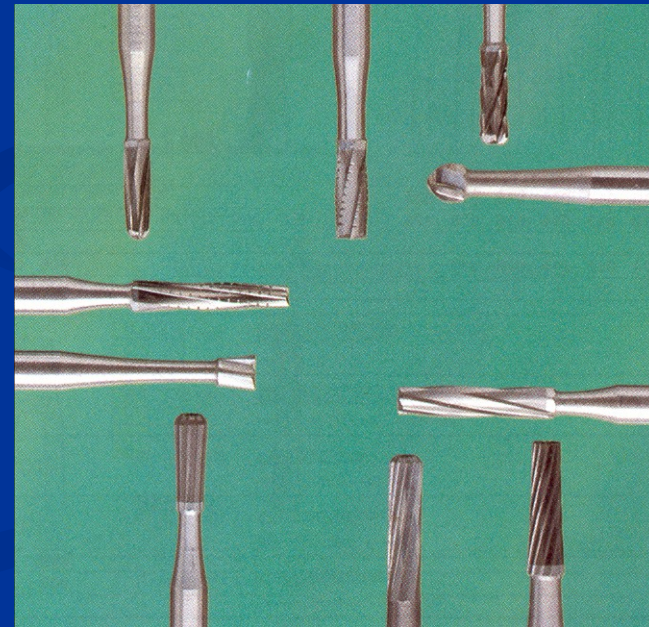




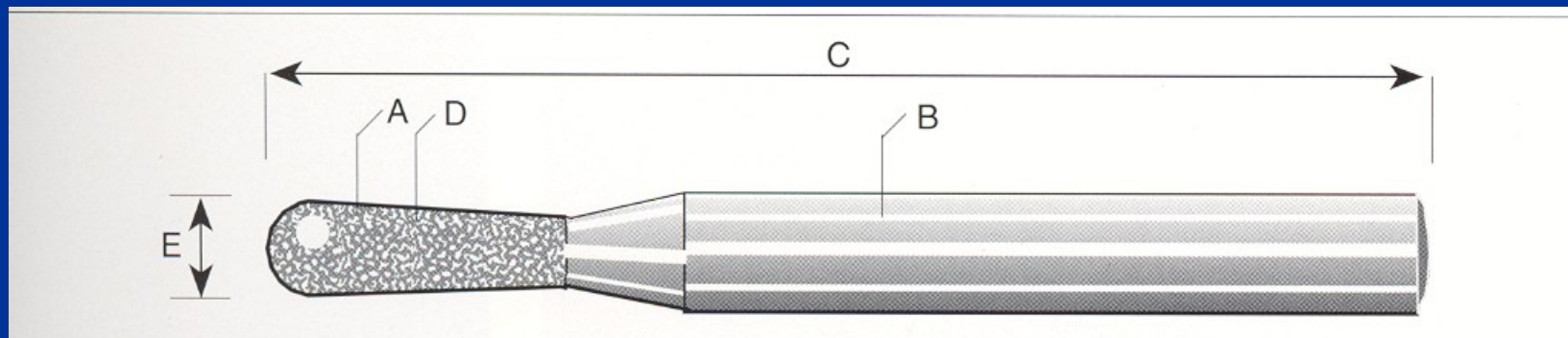
# Vrtáčky

- Mají být zhotoveny z vysoce kvalitní tvrdokovové slitiny.
- Slouží k mnoha účelům v ordinaci i laboratoři

břity odkrajují materiál  
rýhy odvádějí materiál



Brousky-diamantované  
- karborundové  
- korundové



# Diamond abrasive instruments

Diamond bort – small sharp particles in softer matrix. Cutting occurs at a large number of points.

Metal blank

Diamond powder

Metallic bonding material



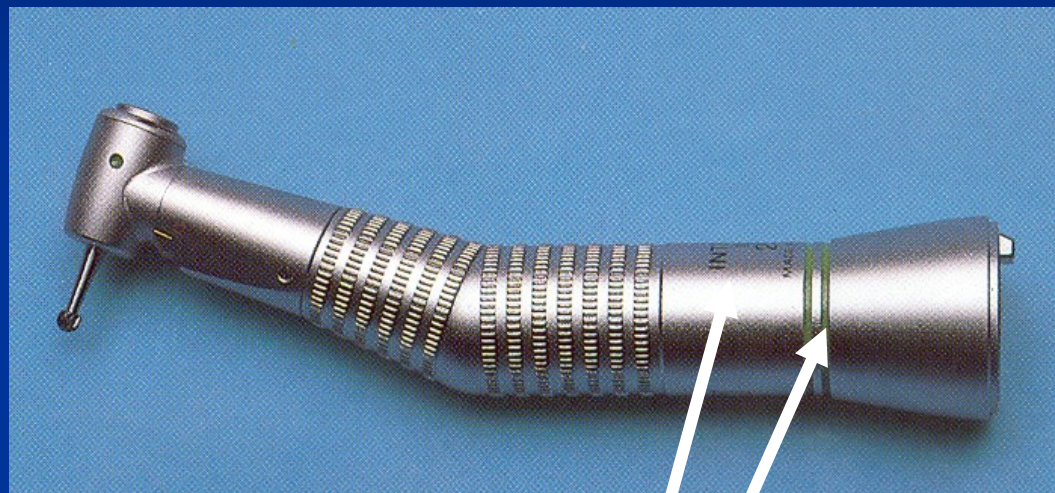
# Preparation speed

- Low (slow) speeds – below 12.000 rpm
- Medium or intermediate speeds 12.000 – 200.000 rpm
- High or ultrahigh speeds above 200.000 rpm











Spitting box  
with amalgam  
separator









*Hoses – upper leading*







# Cavity preparation

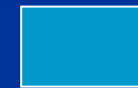
- Power driven
- Hand



**400.000 rpm**

Electromotors – maximum 40.000/min

Blue code – gear 1:1



Airmotors – maximum 20.000/min

Gearing to fast speed



1:5

Gearing to slow speed



2,7 :1 or 7,4 :1

Oscillation





**1 : 1 as far as 40.000 rpm**

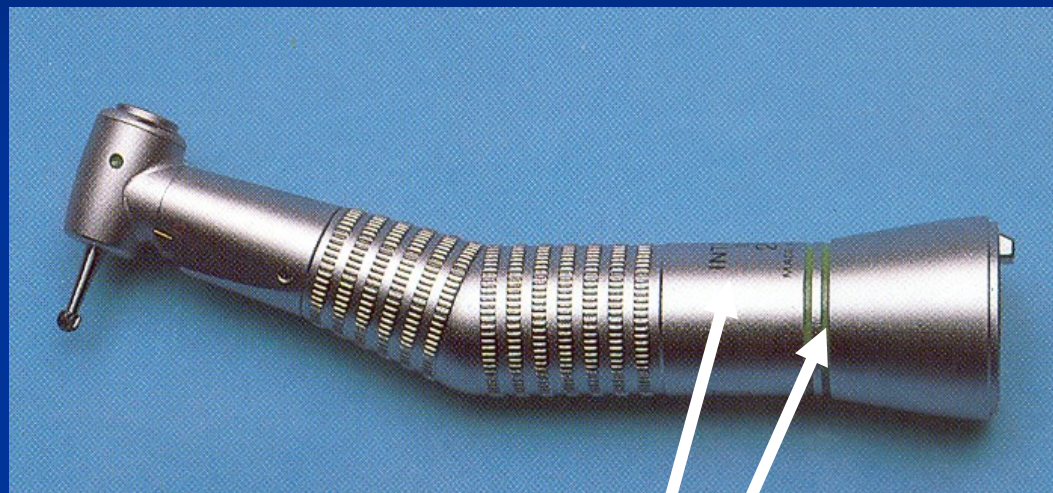


# Red coded handpiece



**1:4 až 1:5 as far as 160.000 – 200.000 rpm**

# Preparace strojová - pohony



2,7:1  
7,4:1



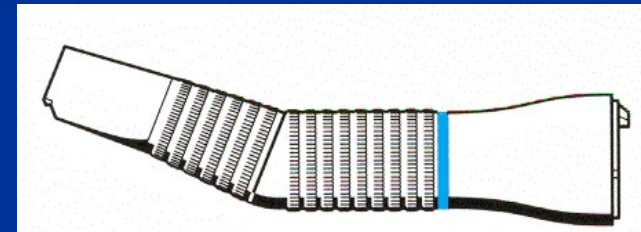
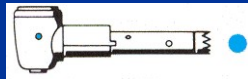
# Blue and green coded handpiece



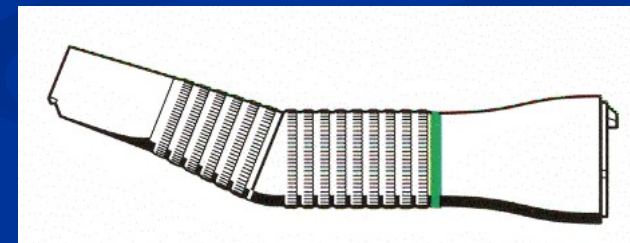
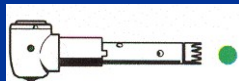
# Hanpieces combined



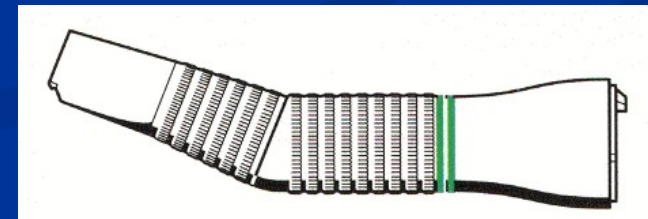
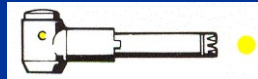
1:1



2:1

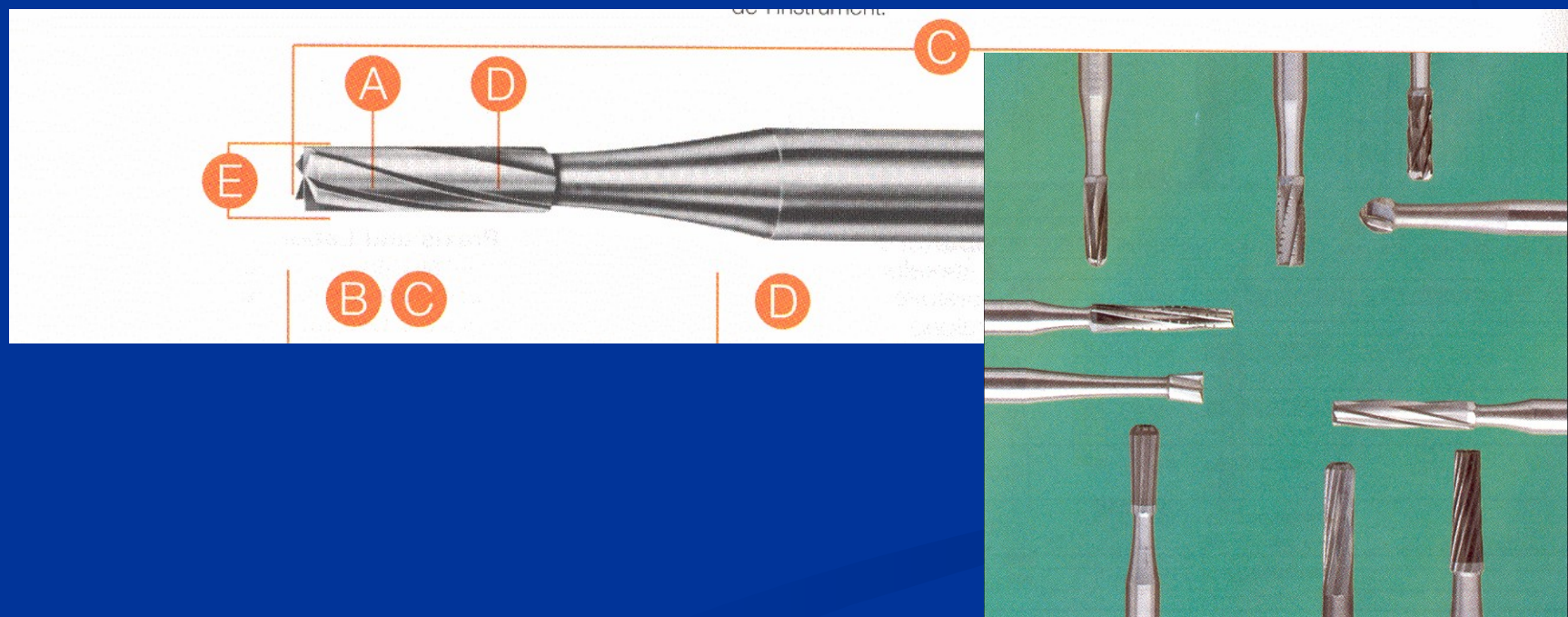


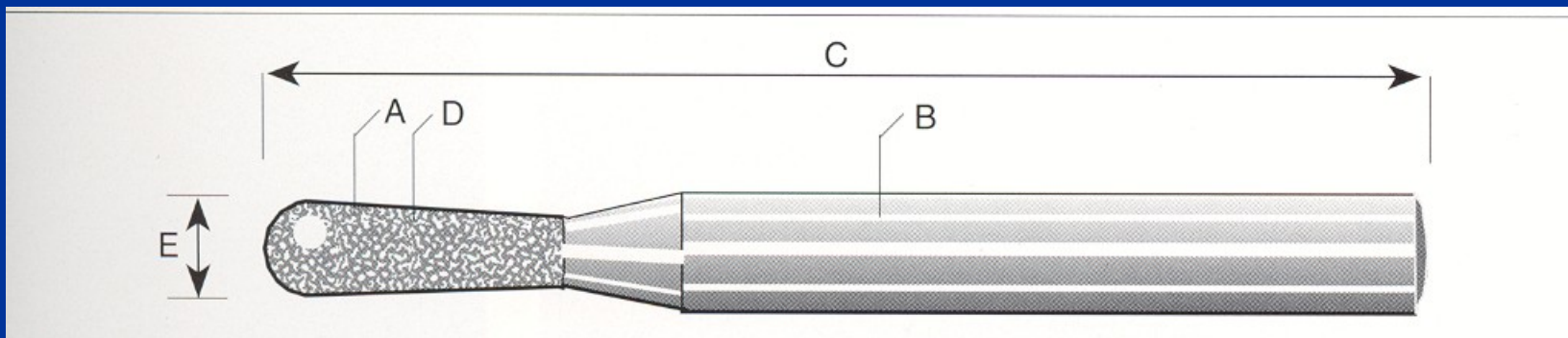
nerotuje





# ISO 6360





# Filling materials

## Temporary

Zinkoxidsulphate cement

One component cements based on gypsum and organic lute

Zinoxidphosphate cement

## Definitive

Amalgam

Composites

# Filling materials

Amalgam:

Mercury

Powder – metal alloy:

Silver

Tin

Copper

Zinc

# Chisel – for enamel Cleaver



# Chisel for enamel



# Excavator

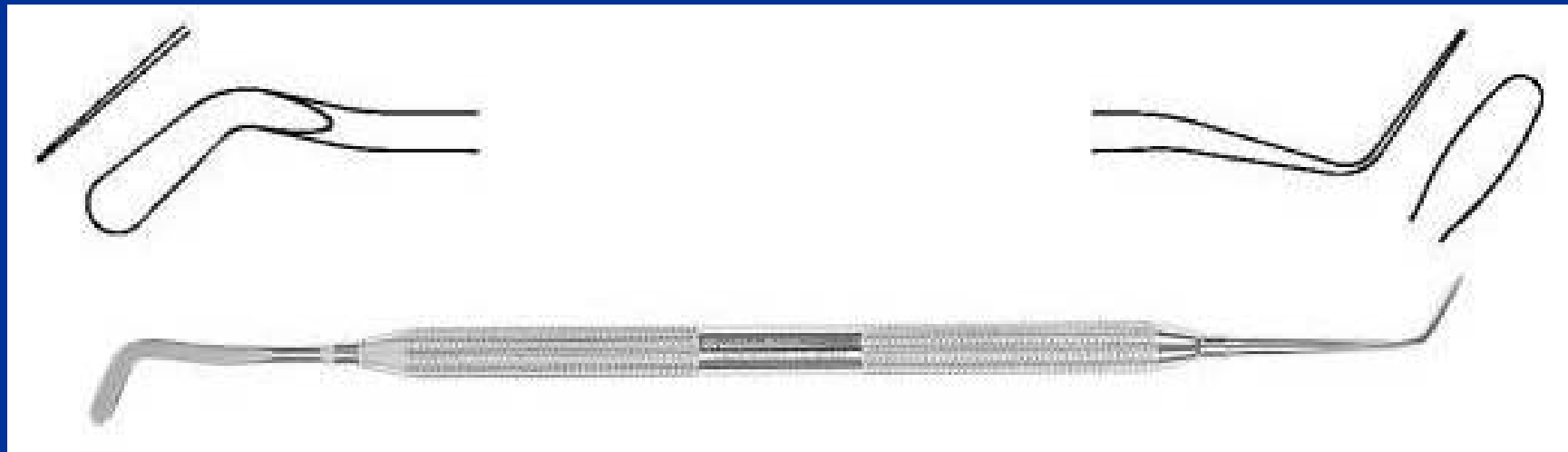


# Filling instruments

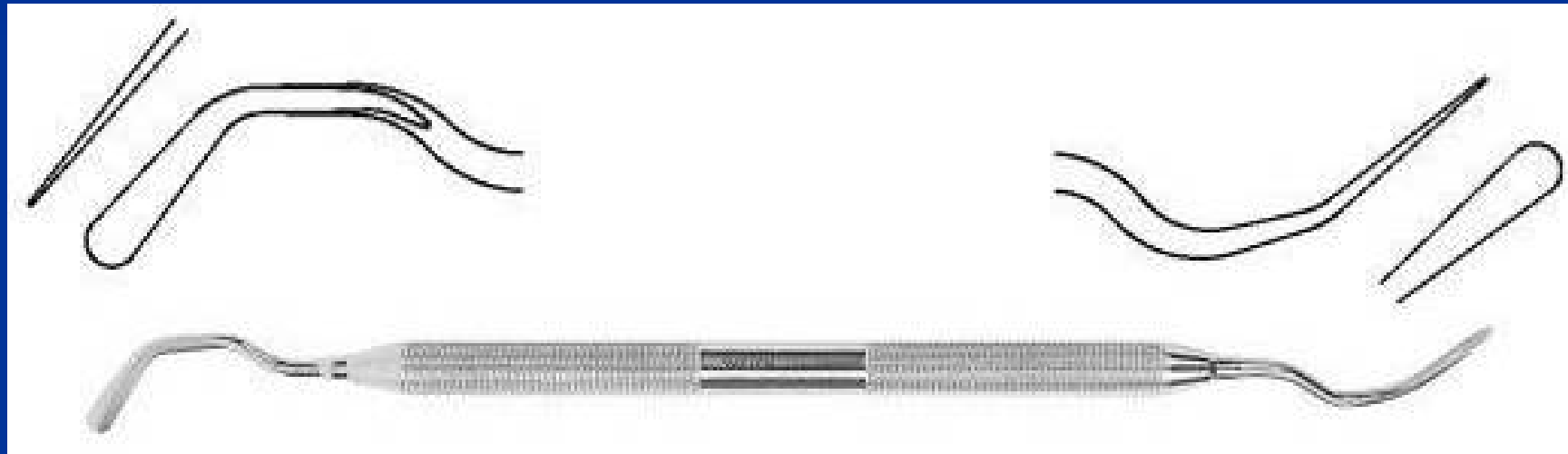


# Burnisher -plane

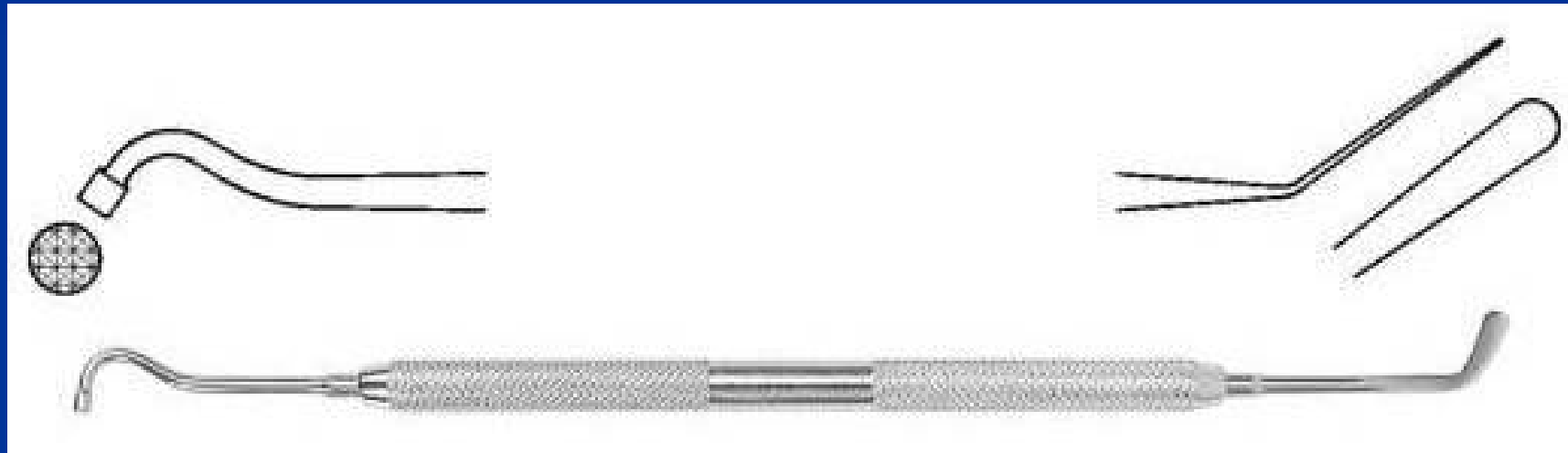
## Angular- trough edge trough face



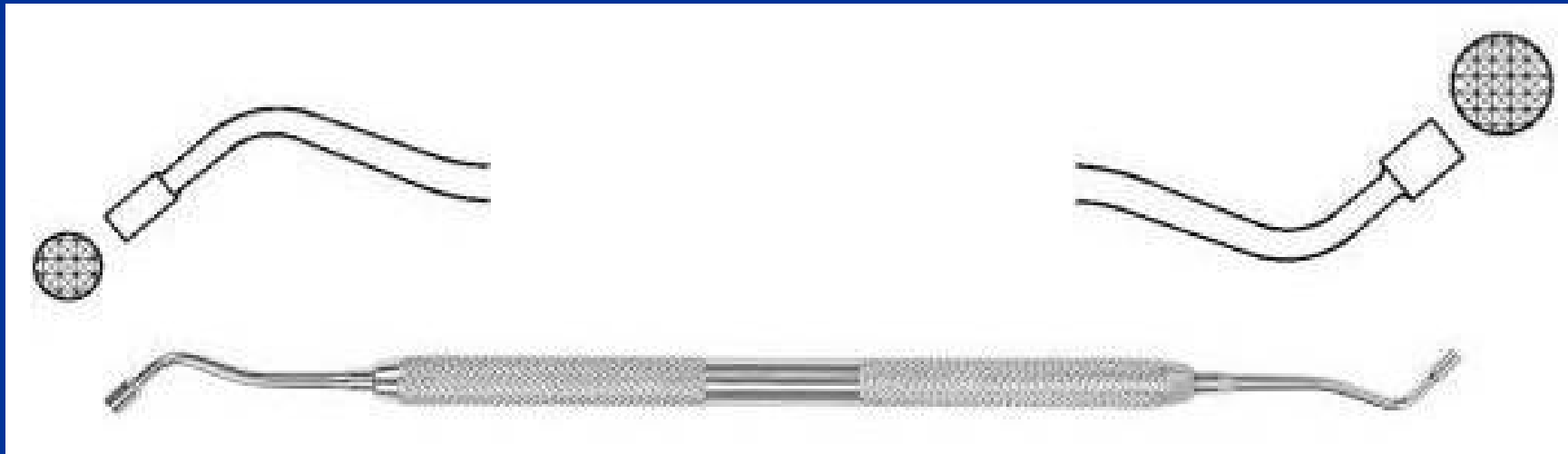
# Burnisher - angular three face



# Condensor and burnisher combined



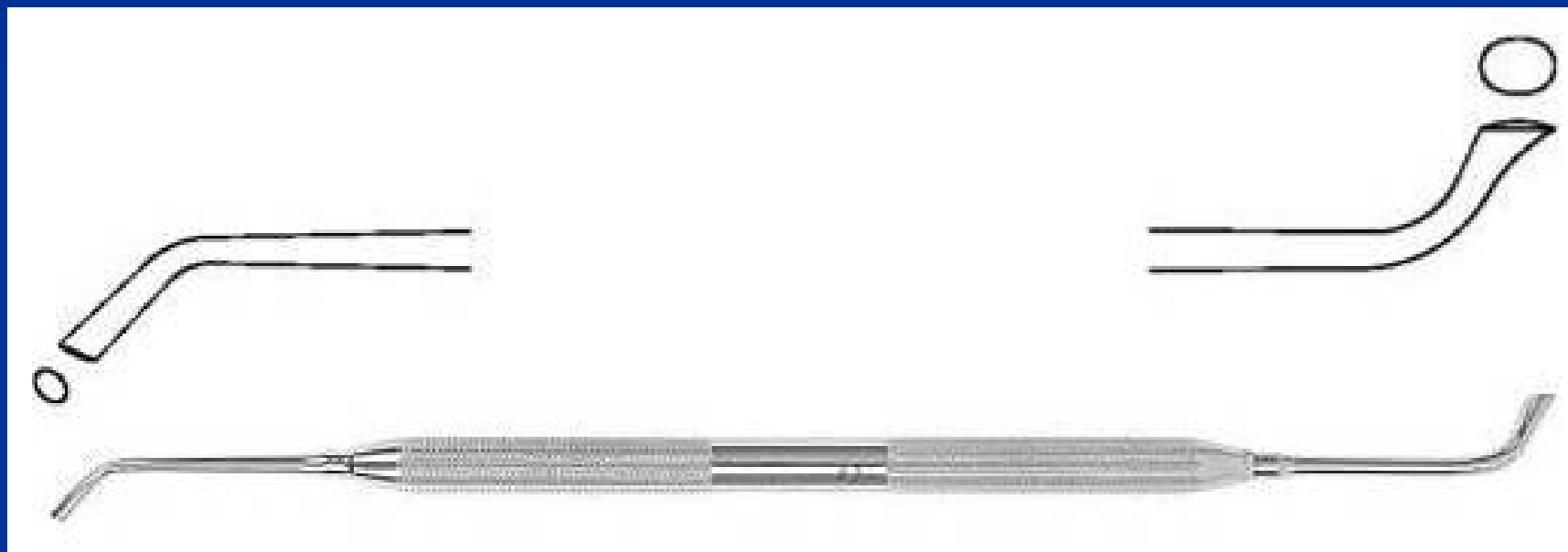
# Amalgam carrier



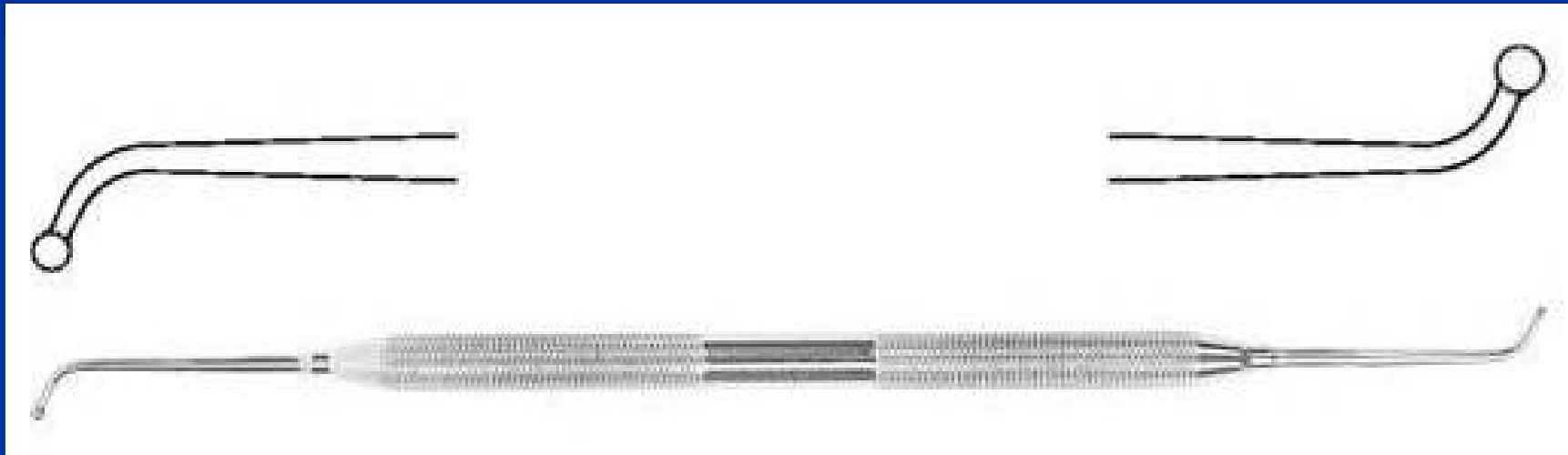
# Condensor for amalgam



# Condensor for guttaprecha - hoof

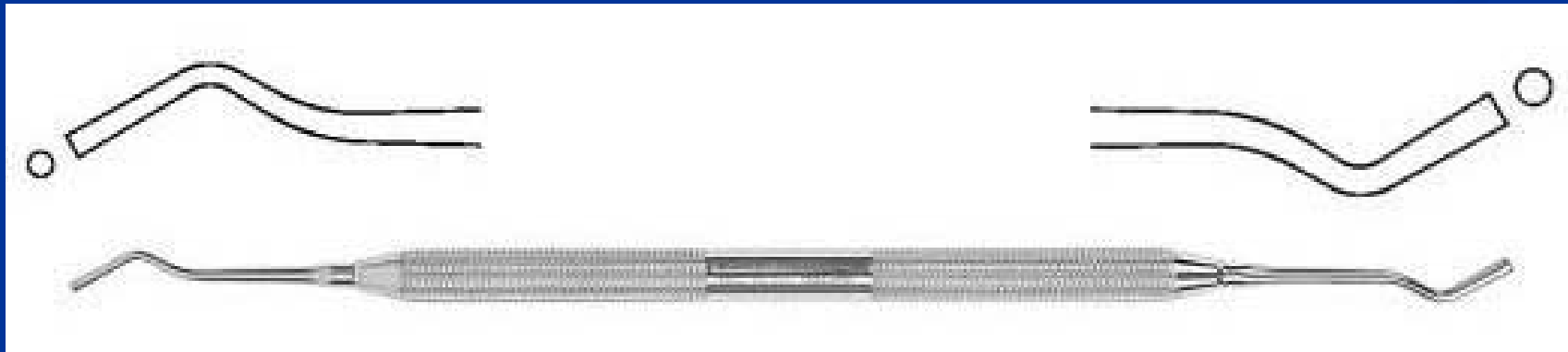


# Ball condensor





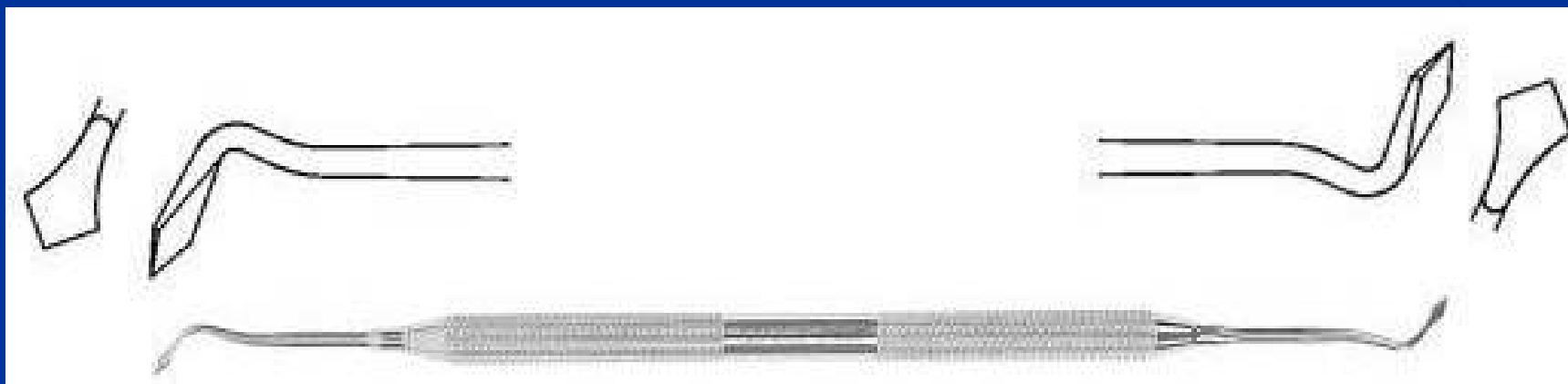
# Condensor –stamen



# Fosterflagg



# Frahm



# Carver: Discoid - Cleoid

