

Endometrióza

Přednáška pro bakalářské studium porodní asistence.

Definice



Sakrouterinní vaz 63 %

Ovaria 56 %

Douglas 25 %

Měchýř 20 %

Samps. Cysty 20 %

Lig. Latum 8 %

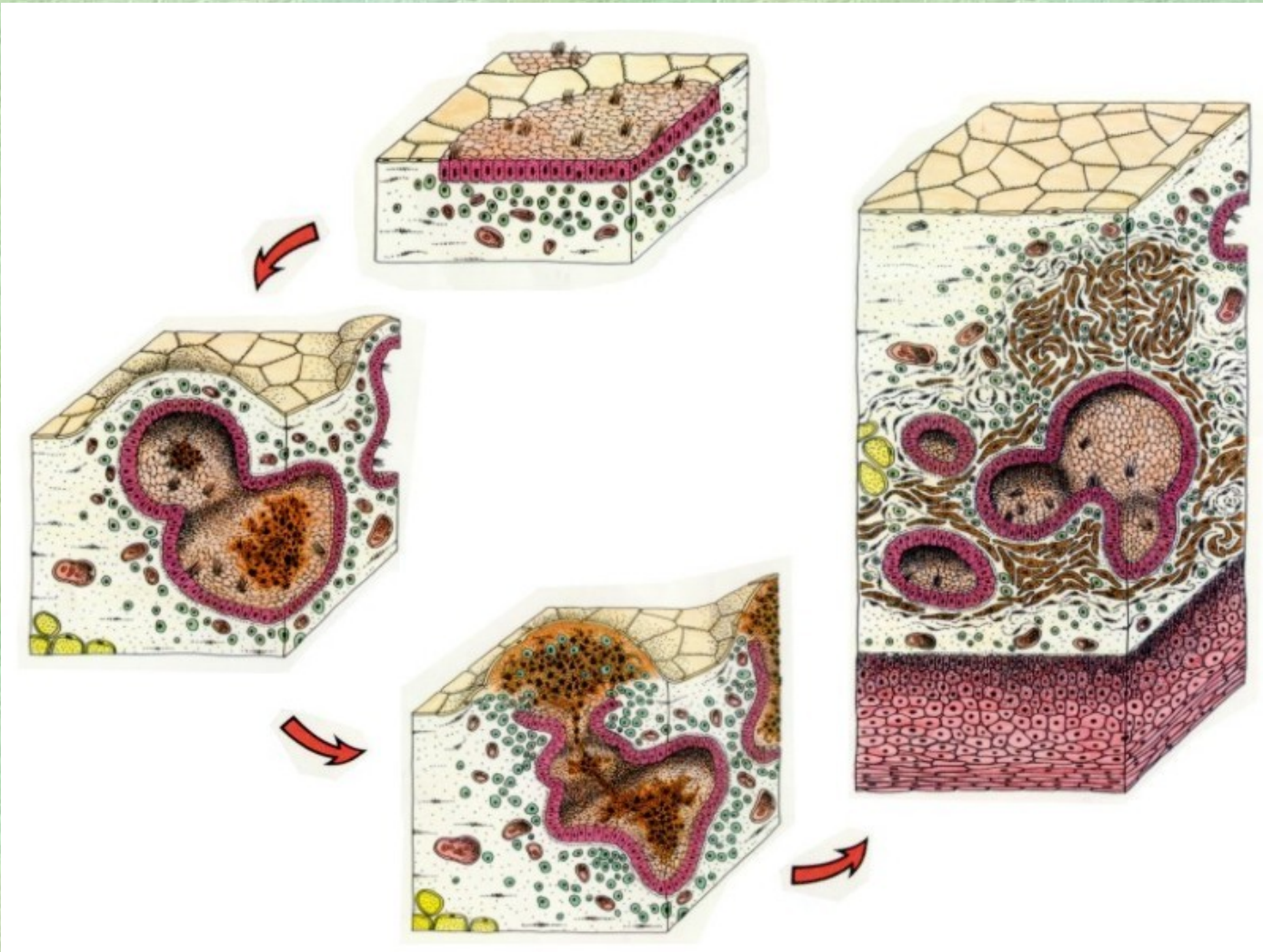
Střevo 6 %

Symptomy endometriózy

- bolest (pelvalgie, dyspareunie, dysmenorrhoea...)
- poruchy plodnosti
- GIT - tenesmy, obstrukce, krvácení
- urinární trakt - krvácení, obstrukce
- operační jizvy - rezistence, krvácení, bolest
- plíce - hemoptýza

Etiologie endometriózy

- Metaplastická (Meyer, 1919)
- Implantační teorie (Sampson, 1921)
- Indukční teorie (Merril, 1966)
- Transportní teorie (Halban, Meigs)
- Imunologická teorie (Dmowski, 1987)
- Teorie LUF



Patogeneze symptomů:

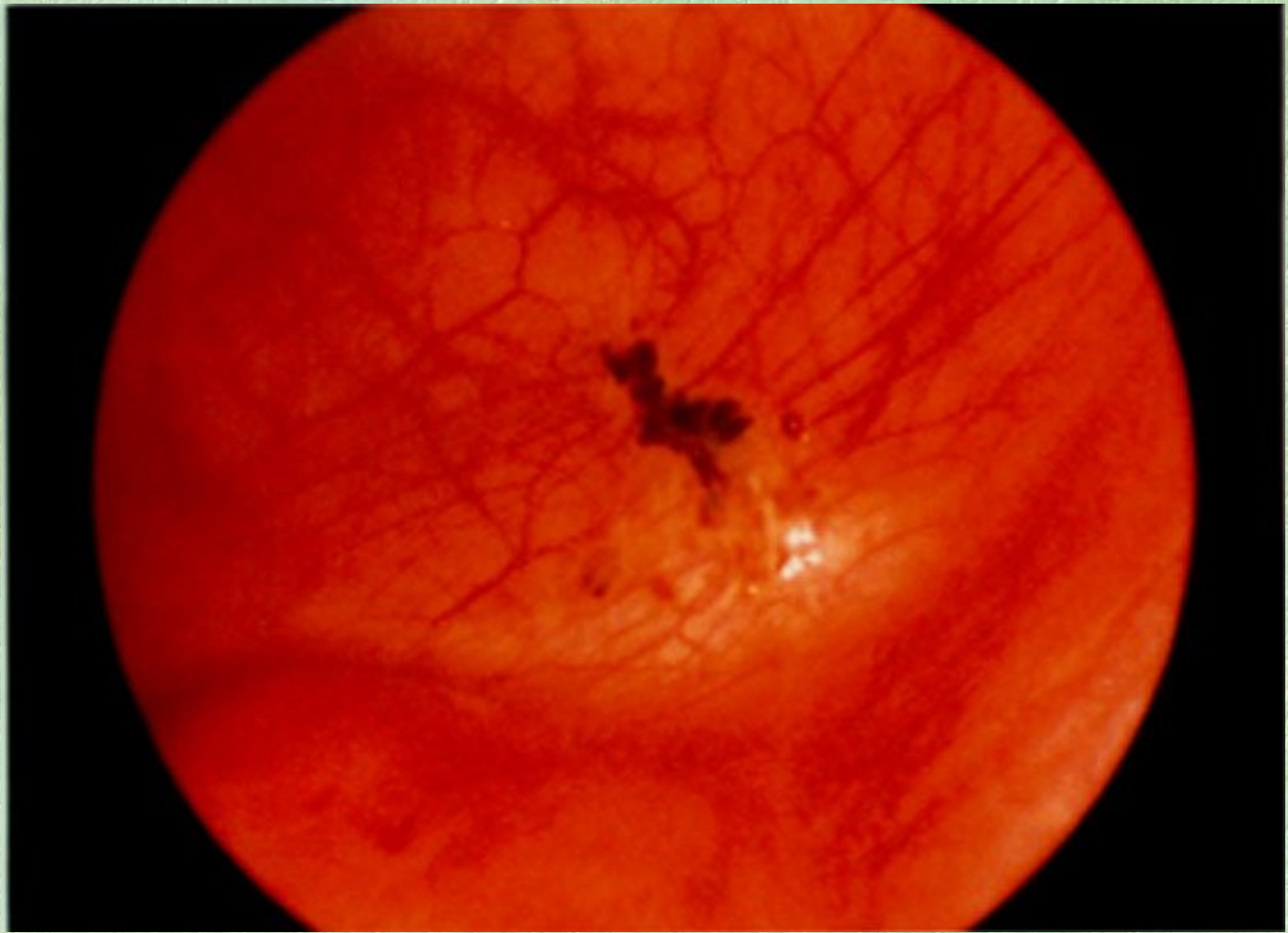
- metabolismus kyseliny arachidonové (prostaglandiny)
- alterace imunitního systému (makrofágy, cytokiny - např. fibroplastické)
- mechanicky

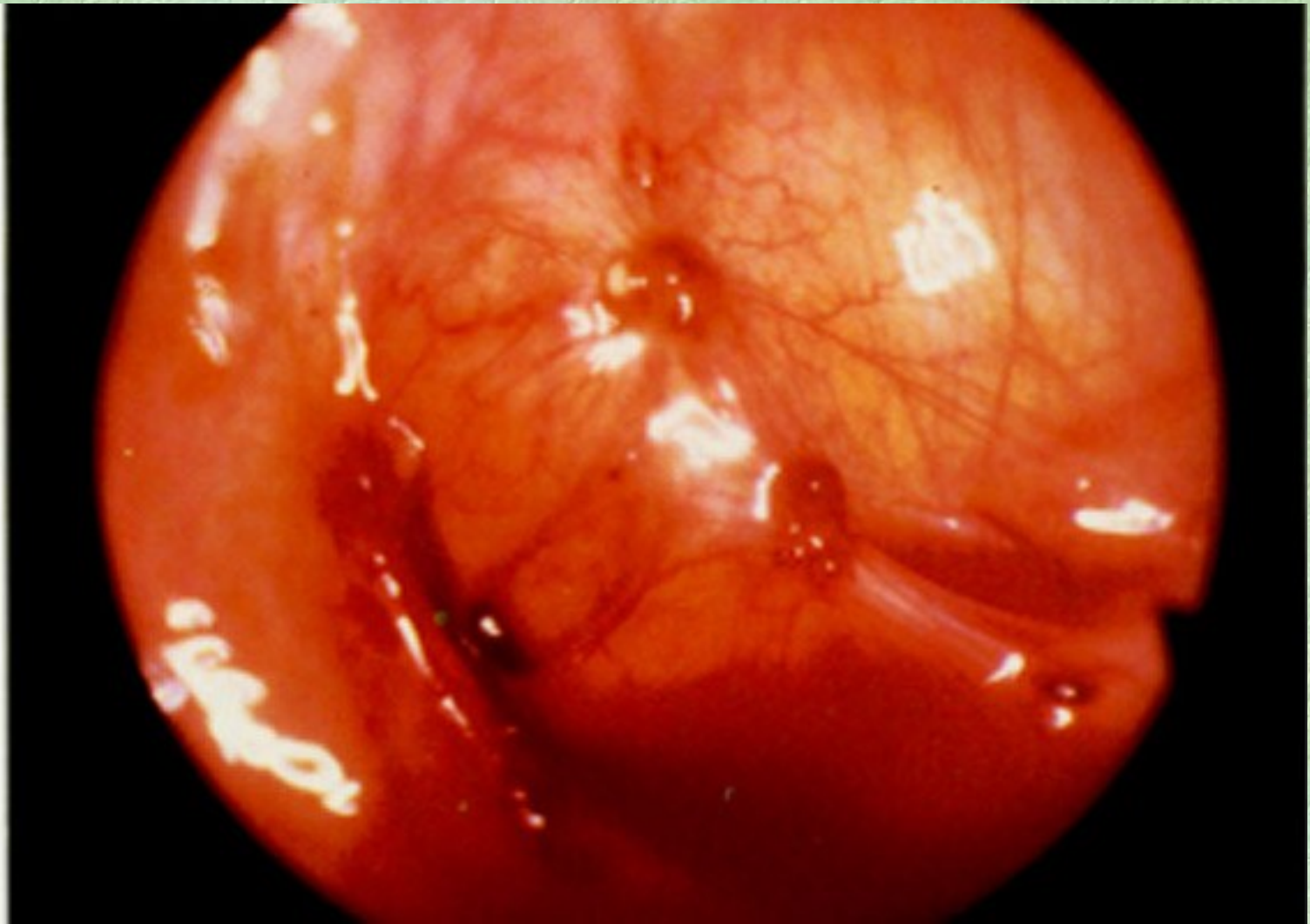
Základní rysy endometriózy:

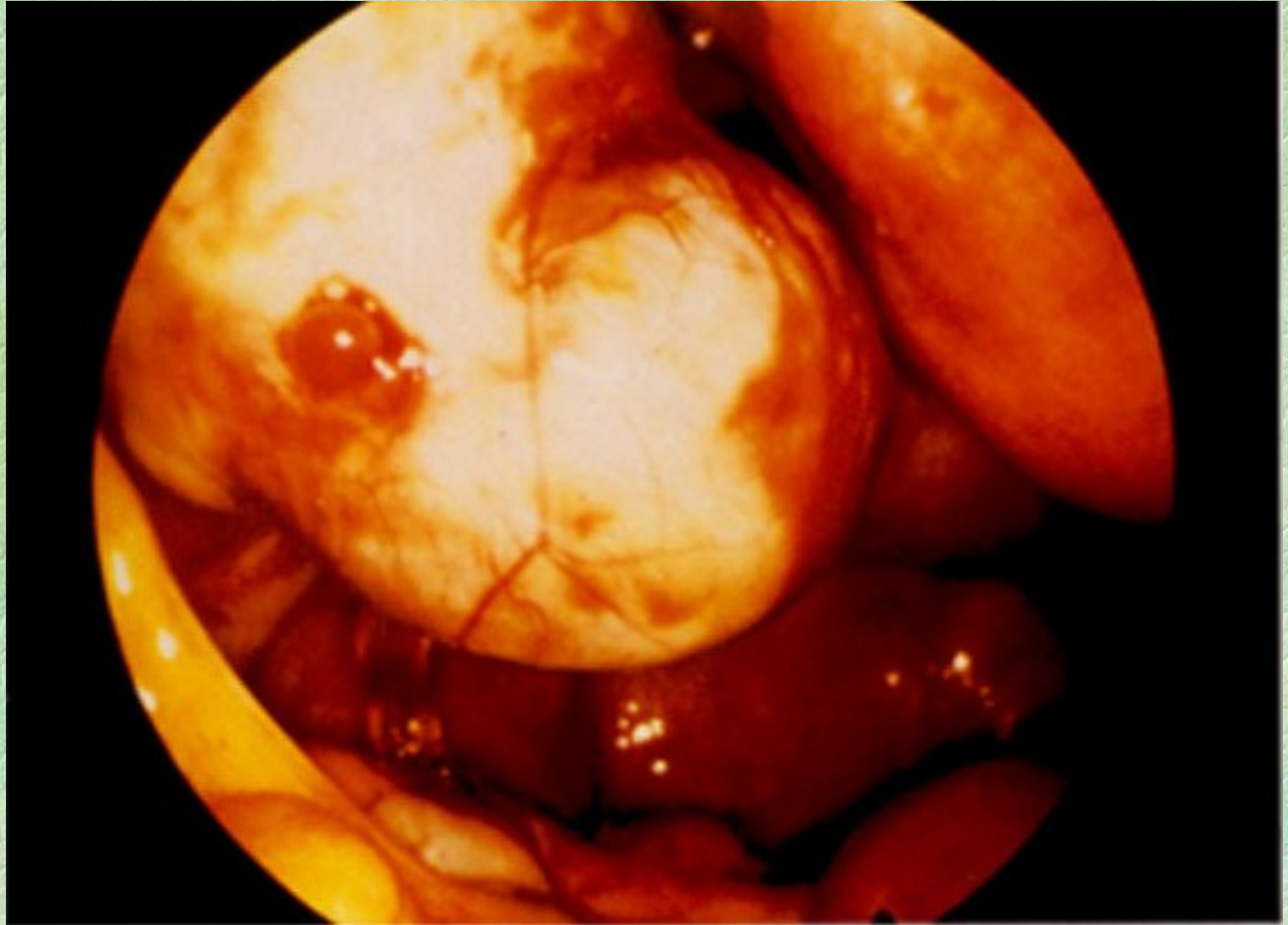
- Závislost na estrogenech !!!
- Progresivní charakter !!!

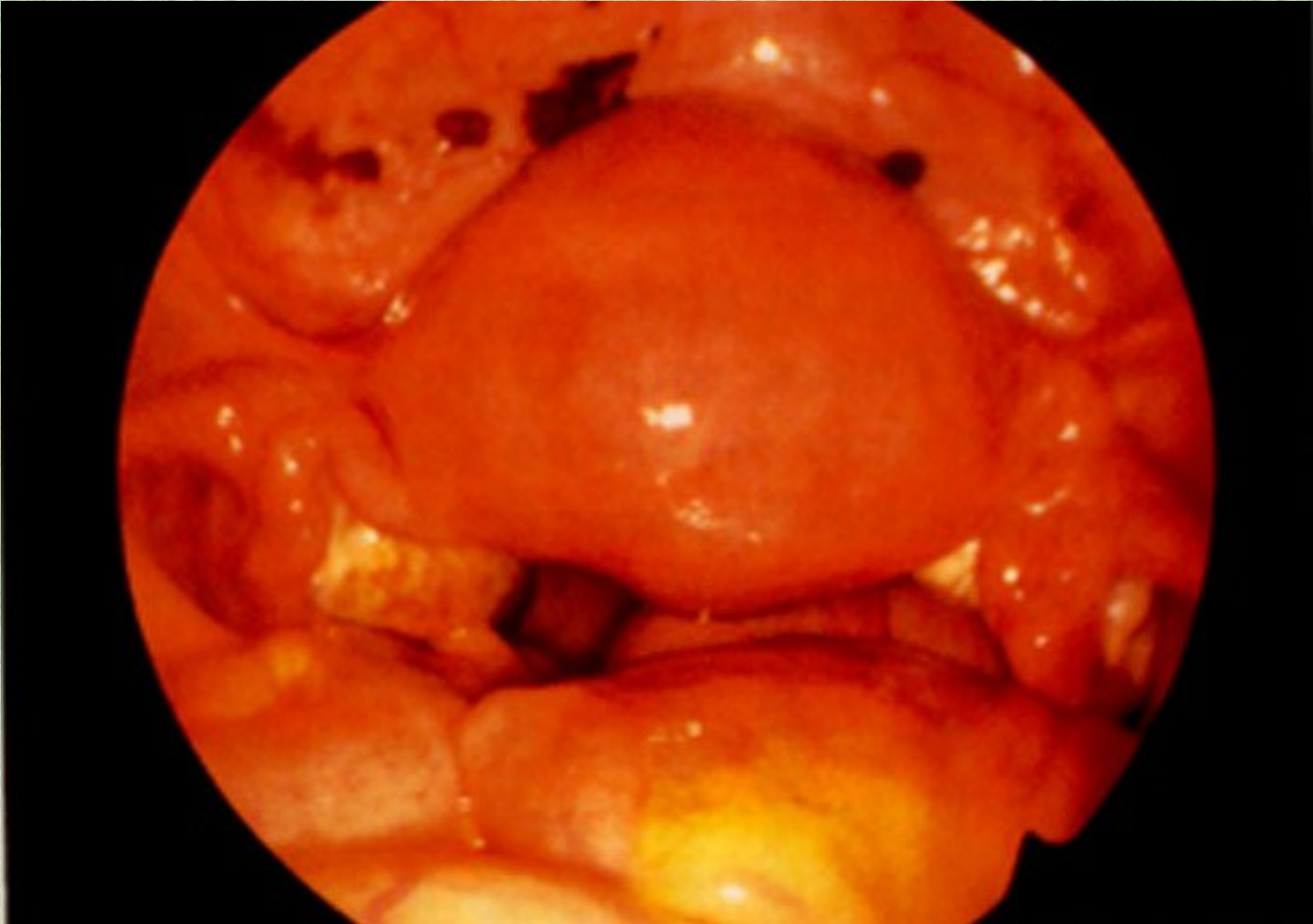
Klasifikace endometriózy podle lokalizace

- Endometriosis genitalis
 - interna
 - externa
- Endometriosis extragenitalis









Klasifikace endometriózy podle stupně závažnosti

Stádium:

I - minimální (1 - 5 bodů)

II - lehké (6- 15 bodů)

III - střední (16 - 30 bodů)

IV - těžké (31 - 54 bodů)



**THE AMERICAN FERTILITY SOCIETY
REVISED CLASSIFICATION OF ENDOMETRIOSIS**

Patient's Name _____ Date _____

Stage I (Minimal) - 1-5 Laparoscopy _____ Laparotomy _____ Photography _____

Stage II (Mild) - 6-15 Recommended Treatment _____

Stage III (Moderate) - 16-40

Stage IV (Severe) - >40

Total _____ Prognosis _____

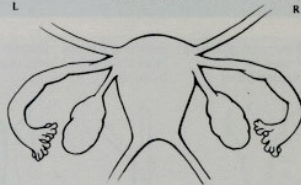
PERITONEUM	ENDOMETRIOSIS	< 1cm	1-3cm	> 3cm
	Superficial	1	2	4
Deep	2	4	6	
OVARY	R Superficial	1	2	4
	Deep	4	16	20
	L Superficial	1	2	4
	Deep	4	16	20
POSTERIOR CULDESAC OBLITERATION		Partial	Complete	
		4	40	
OVARY	ADHESIONS	< 1/3 Enclosure	1/3-2/3 Enclosure	> 2/3 Enclosure
	R Filmy	1	2	4
	Dense	4	8	16
	L Filmy	1	2	4
	Dense	4	8	16
	TUBE	R Filmy	1	2
Dense		4*	8*	16
L Filmy		1	2	4
Dense		4*	8*	16

*If the fimbriated end of the fallopian tube is completely enclosed, change the point assignment to 16.

Additional Endometriosis: _____ Associated Pathology: _____

To Be Used with Normal Tubes and Ovaries

To Be Used with Abnormal Tubes and/or Ovaries



For additional supply write to: The American Fertility Society, 2140 11th Avenue South, Suite 200, Birmingham, Alabama 35205-2800

EXAMPLES & GUIDELINES

STAGE I (MINIMAL)



PERITONEUM
Superficial Endo - 1-3cm - 2
R. OVARY
Superficial Endo - < 1cm - 1
Filmy Adhesions - < 1/3 - 1
TOTAL POINTS - 4

STAGE II (MILD)



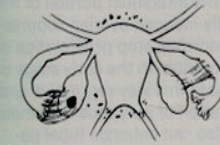
PERITONEUM
Deep Endo - > 3cm - 6
R. OVARY
Superficial Endo - < 1cm - 1
Filmy Adhesions - < 1/3 - 1
L. OVARY
Superficial Endo - < 1cm - 1
TOTAL POINTS - 9

STAGE III (MODERATE)



PERITONEUM
Deep Endo - > 3cm - 6
CULDESAC
Partial Obliteration - 4
L. OVARY
Deep Endo - 1-3cm - 16
TOTAL POINTS - 26

STAGE III (MODERATE)



PERITONEUM
Superficial Endo - > 3cm - 4
R. TUBE
Filmy Adhesions - < 1/3 - 1
R. OVARY
Filmy Adhesions - < 1/3 - 1
L. TUBE
Dense Adhesions - < 1/3 - 16*
L. OVARY
Deep Endo - < 1 cm - 4
Dense Adhesions - < 1/3 - 4
TOTAL POINTS - 30

STAGE IV (SEVERE)



PERITONEUM
Superficial Endo - > 3cm - 4
L. OVARY
Deep Endo - 1-3cm - 32**
Dense Adhesions - < 1/3 - 8**
L. TUBE
Dense Adhesions - < 1/3 - 8**
TOTAL POINTS - 52

STAGE IV (SEVERE)



PERITONEUM
Deep Endo - > 3cm - 6
CULDESAC
Complete Obliteration - 40
R. OVARY
Deep Endo - 1-3cm - 16
Dense Adhesions - < 1/3 - 4
L. TUBE
Dense Adhesions - > 2/3 - 16
L. OVARY
Deep Endo - 1-3cm - 16
Dense Adhesions - > 2/3 - 16
TOTAL POINTS - 114

*Point assignment changed to 16
**Point assignment doubled

Determination of the stage or degree of endometrial involvement is based on a weighted point system. Distribution of points has been arbitrarily determined and may require further revision or refinement as knowledge of the disease increases.

To ensure complete evaluation, inspection of the pelvis in a clockwise or counterclockwise fashion is encouraged. Number, size and location of endometrial implants, plaques, endometriomas and/or adhesions are noted. For example, five separate 0.5cm superficial implants on the peritoneum (2.5 cm total) would be assigned 2 points. (The surface of the uterus should be considered peritoneum.) The severity of the endometriosis or adhesions should be assigned the highest score only for peritoneum, ovary, tube or culdesac. For example, a 4cm superficial and a 2cm deep implant of the peritoneum should be given a score of 6 (not 8). A 4cm

deep endometrioma of the ovary associated with more than 3cm of superficial disease should be scored 20 (not 24). In those patients with only one adnexa, points applied to disease of the remaining tube and ovary should be multiplied by two. **Points assigned may be circled and totaled. Aggregation of points indicates stage of disease (minimal, mild, moderate, or severe).

The presence of endometriosis of the bowel, urinary tract, fallopian tube, vagina, cervix, skin etc., should be documented under "additional endometriosis." Other pathology such as tubal occlusion, leiomyomata, uterine anomaly, etc., should be documented under "associated pathology." All pathology should be depicted as specifically as possible on the sketch of pelvic organs, and means of observation (laparoscopy or laparotomy) should be noted.

Klasifikace endometriózy podle příznaků:

- Asymptomatická forma
- Symptomatická forma

Diagnostika endometriózy

- Anamnéza
- Gynekologické vyšetření
- UZ vyšetření
- Ca 125
- Laparoskopie
- Histologie

Terapie endometriózy respektuje:

- Závažnost symptomů
- stadium endometriózy
- fertilitu
- věk pacientky
- předchozí terapii

Medikamentózní terapie endometriózy

A. Suprese ovariálních steroidů

1. Pseudogavidita (Kistner, 1958)

- gestageny, kombinace s estrogeny

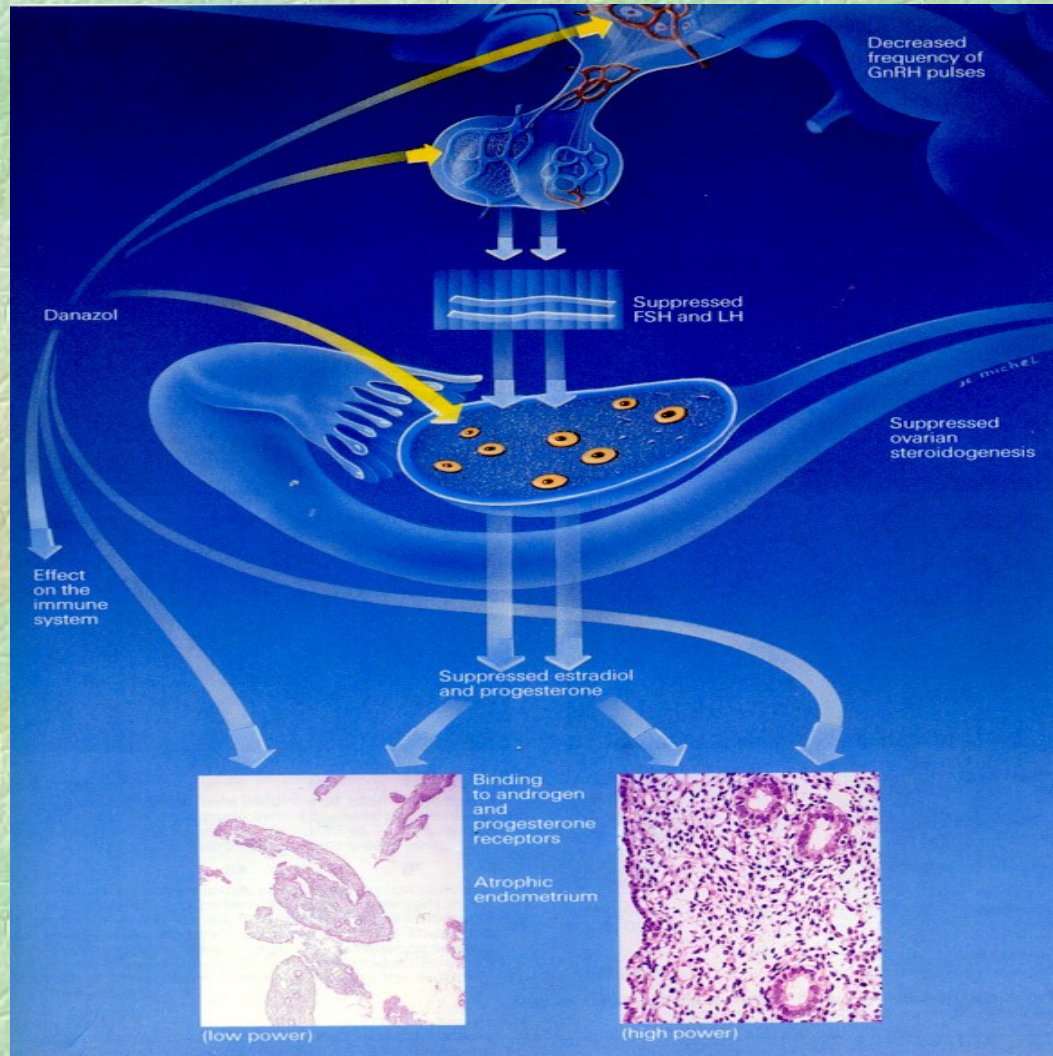
2. Pseudomenopausa

- danazol
- gestrinon
- analoga GnRH

B. Symptomatická léčba

antiflogistika, HAK, antifobika

Účinky danazolu



Operační terapie endometriózy

LSK vs. laparotomie

A. Konzervativní

- Excise
- Koagulace
- Laser vaporizace
- Cystectomie

B. Radikální

- Adnexectomie
- Hysterectomie