

Institute for microbiology shows



TRACING THE CRIMINAL

Part six: More gram-negative
cocci and bacilli

Survey of topics

Clinical characteristics – G– cocci

Clinical characteristics – „other G– bacilli

Diagnostics of G– cocci

Diagnostics of „other G– bacilli“

Clinical characteristics – G– cocci



<http://www.szs.edu.sk>

Story One



www.stdservices.on.net

- **Johnny was** very childish, he had no experience with women even in 20 years of age. His friends made fun of him. Once they made a plan: they gave him lots of spirits and paid a prostitute for him. Johnny had a feeling, that he is finally a man... only before **pus** started to drop from his urethra...

Certainly, you know, what is the criminal

- Of course, it is *Neisseria gonorrhoeae*, (gonococcus) causing gonorrhoea.
- Gonorrhoea is urethritis, in females also cervicitis; asymptotically or symptomatically gonococci are found in pharynx and rectum, too.
- In females, it is not a colpitis (vaginal inflammation), so it is not recommended to perform vaginal swabs in gonorrhoea.

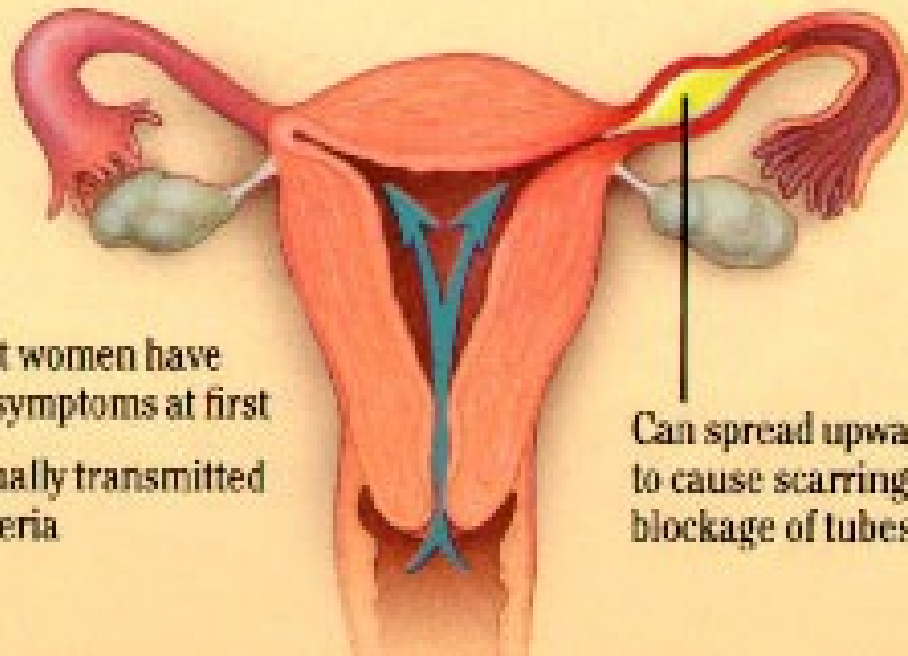


Partner of Johnny of that night...

nova.medicina.cz

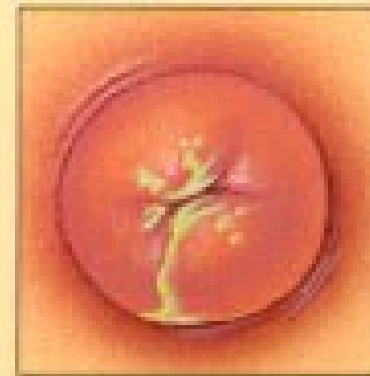


www.lcusd.net

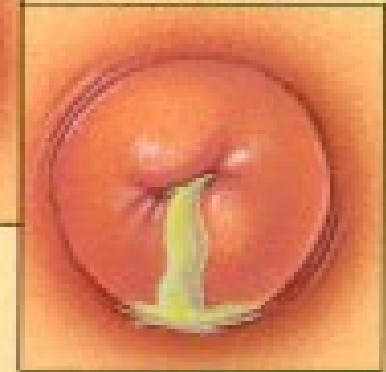


Can spread upwards to cause scarring or blockage of tubes

Chlamydia



Gonorrhoea



Most women have NO symptoms at first

Sexually transmitted bacteria

Story two

- Lucy learned four weeks for the examination of physiology. **She did not leave the house at all** and only sat at textbooks. At the exam she had intention, that she is not able to say a word, but finally she passed with „E“.
- In the evening, **she visited a dancing party with friends**. The party was full of smoke and they danced during all night. Next day, **Lucy was not well**, she started to **have fever** and rash.

(continuing)



- In this moment, Lucy was hospitalized at **infection clinic**. In ambulance she failed unconscious and doctors constated **metabolic failure**. After ten hours of attempts to keep Lucy's vital functions, that had no effect, **Lucy died**.
- Such a course of infection may be caused by a **dangerous criminal**. Some of his strains are present in **throat of healthy persons...**

And the criminal is...

- ... ***Neisseria meningitidis*** or **meningococcus**
- Meningococcus causes meningitis, but also sepsis and other serious problems; all this is product of **clonal strains**.
- Other strains are completely innocents and studies say that some ten percent of population are throat carriers of meningococcus.
- Virulence is related mostly with **protein antigens**
- **Polysacharidic antigens** determine preventability by vaccination

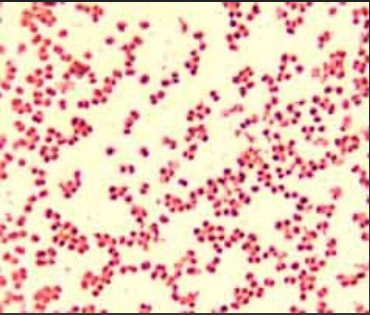


Why the infection comes sometimes, and sometimes does not

- The invasive infection is only present, when the strain is highly virulent (specific clones of the microorganism) and the host organism is ready to get infected
- Meningococcus is transmitted by a **narrow contact**. Invasive **infection is more likely when mucous membranes are damaged**, e. g. by smoking or previous viral infection.
- Infection is often present after **too big physical activity after long inactivity period**

Meningococcal infection is serious, but quite rare in Europe. In some other parts of the world, the situation is different – see next slide.

Meningococcal meningitis is worldwide very important infection



„Meningitis belt“,
area of extended
presence of
meningococcal
meningitis



Treatment

- It is necessary to **ensure patient's survival** (to follow haemorrhagia and acidobasic equilibrium)
- In the same time, antibiotics are administered
- Drug of choice in meningococcal diseases is even now **classical penicillin**. Among other drugs it is also common to use one of 3rd generation cephalosporins (**ceftriaxon** – good access to the CSF), or other antibiotics

Prevention by vaccination

- As the incidence is not high in Europe (although the lethality is), usually not the whole population, but just risk groups are vaccinated (soldiers, people in contact with a risky strain)
- The problem exists with **serogroup B**, as its antigenic determinant is not a sufficiently strong antigen and so it is not possible to get a vaccine that would be sufficiently protective. Nevertheless, it is possible to protect people against some individual serotypes inside B serogroup (but not in Europe, here they are too many; the vaccines are used in Cuba and New Zealand)

Vaccines

- There are differences between them. **Old polysaccharide** vaccines give less protection than **new conjugated** vaccines
- There exist also difference in **serogroups** (C only, A + C or tetravaccine A + C + W135 + Y)
- B and C are the most common types in Czechia, but e. g. Mecca hajj () pilgrims need get vaccinated against W135



Different serotypes in the world

<http://www.phac-aspc.gc.ca/publicat/ccdr-rmtc/09vol35/acs-dcc-4/index-eng.php>



Let's compare neisseriae:



	In vivo	In vitro
Gonococcus	The most delicate, sexual transmission only	The most delicate, grows on chocolate agar only
Meningococcus	Less delicate, short distance air transport	Less delicate, if blood agar is enriched, growth is enabled
So called „oral“ neisseriae	The least delicate, air transport possible	The least delicate, grows even on poor blood agar

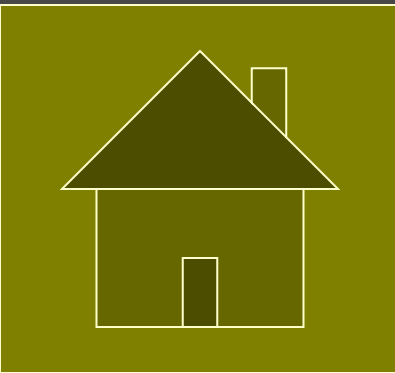
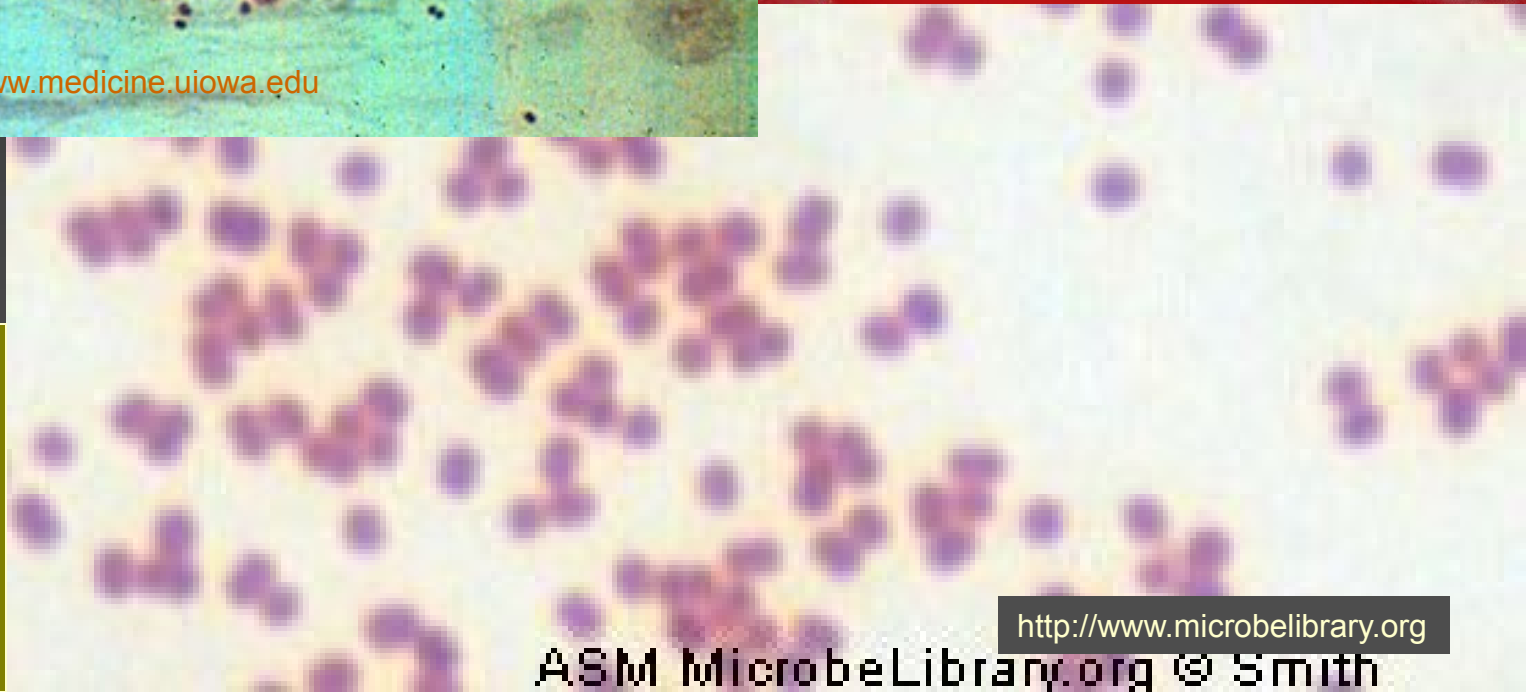
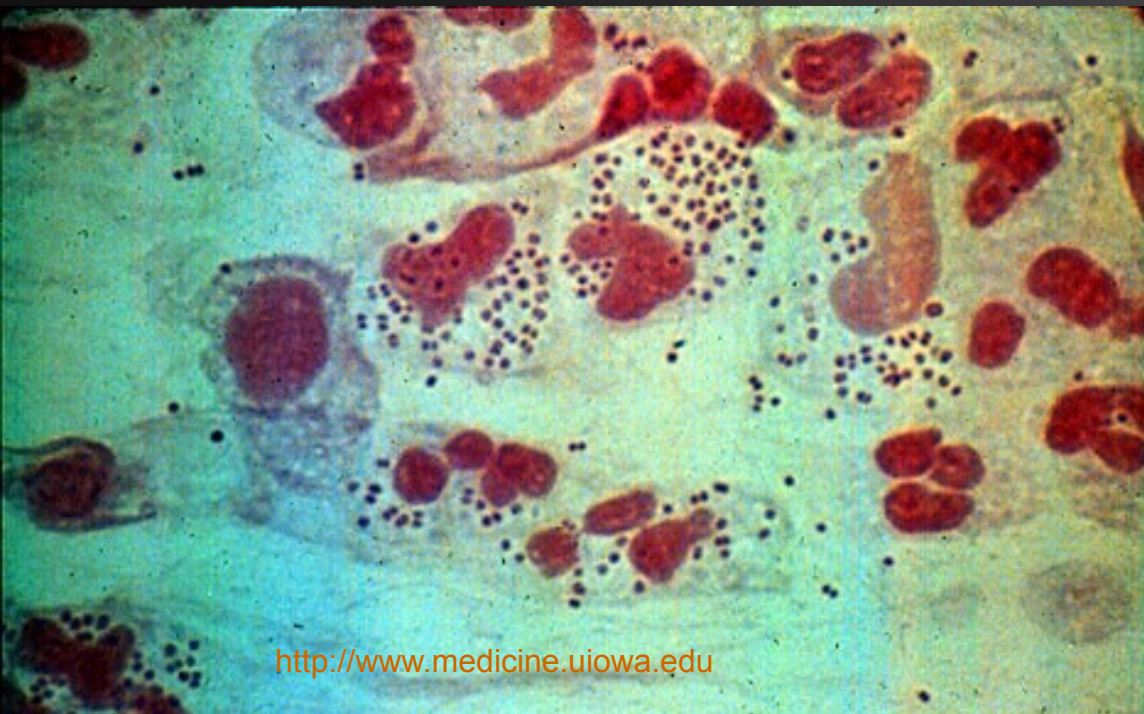
Story three

- Annie was **crying and touching her ear**. Her mother measured her temperature, and it was elevated.
- At general practitioner's, Annie was examined and diagnosis of **otitis media** was set
- As her **tympanon was already broken**, the pus was taken for examination
- AMOCLEN (**amoxicilin**) was used for threatment imediatelly. Later, a **susceptible pathogen** was found.

And this pathogen was

- ***Moraxella* (sub-genus *Branhamella*) *catarrhalis* – another Gram-negative coccus**
- This organism is often present in small amounts even in healthy persons.
- In pure culture causes **sinusitis, otitis media, pharyngitis** etc.
- Her sub-genus (originally genus) name *Branhamella* was derived from Sarah Branham, one of first women scientists. She was one of brave women to show man that not only men can be good in science

Moraxella (Branhamella) catarrhalis



Clinical
characteristics –
„other G– bacilli“

Story four

- There was a big movement in the hospital that day: three more patients, all of them **seniors**, became ill, and again it was the same – **breathing problems and fever**
- After a thoroughful examination, the laboratory found the pathogen not only in patient secretions, but also in hot **water pipes** of the hospital. The pipes had to be rebuilt and only after that the infections were stopped finally.

Legionaire's disease

It is a disease caused by *Legionella pneumophila*

Legionaire's disease is a variant of disease that is quite severe; another variant, **Pontiac fever**, is rather mild

The bacterium of other have reservoir in **water instalation, air condition**, etc.

When building new hospital departments (but also senior houses, hotels, spa...) measures to prevent legionellosis should be taken, mostly at planing water pipe system (namely it is necessary to avoid blind branches, they cannot be run through by hot water or a disinfectant when necessary).

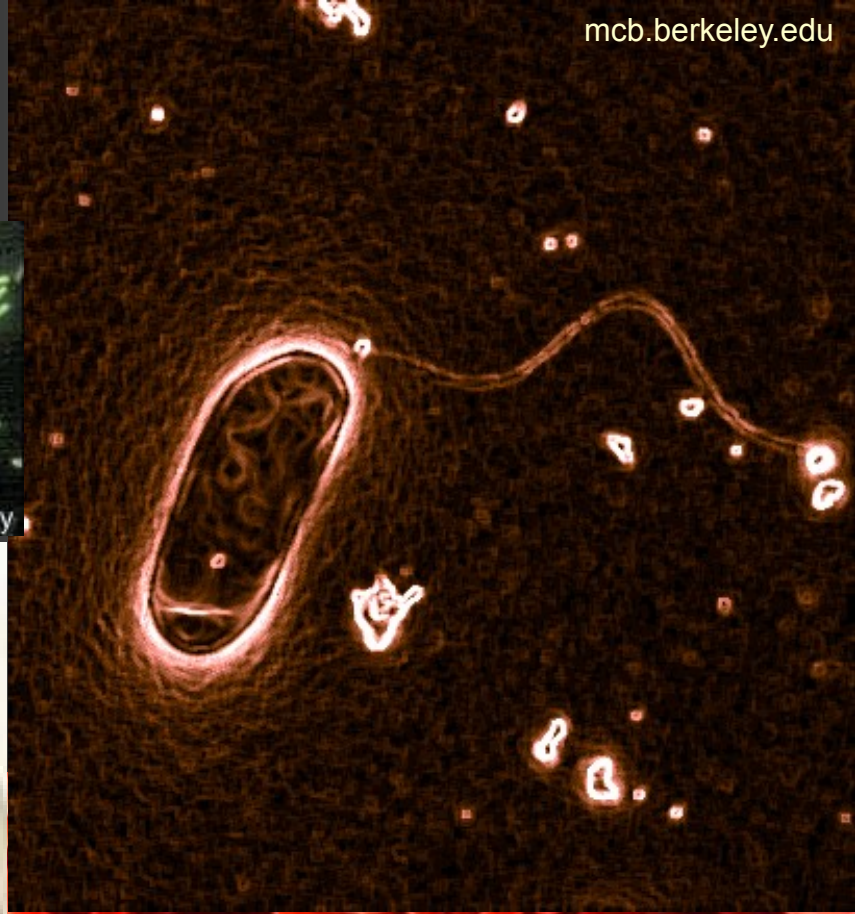


Legionella

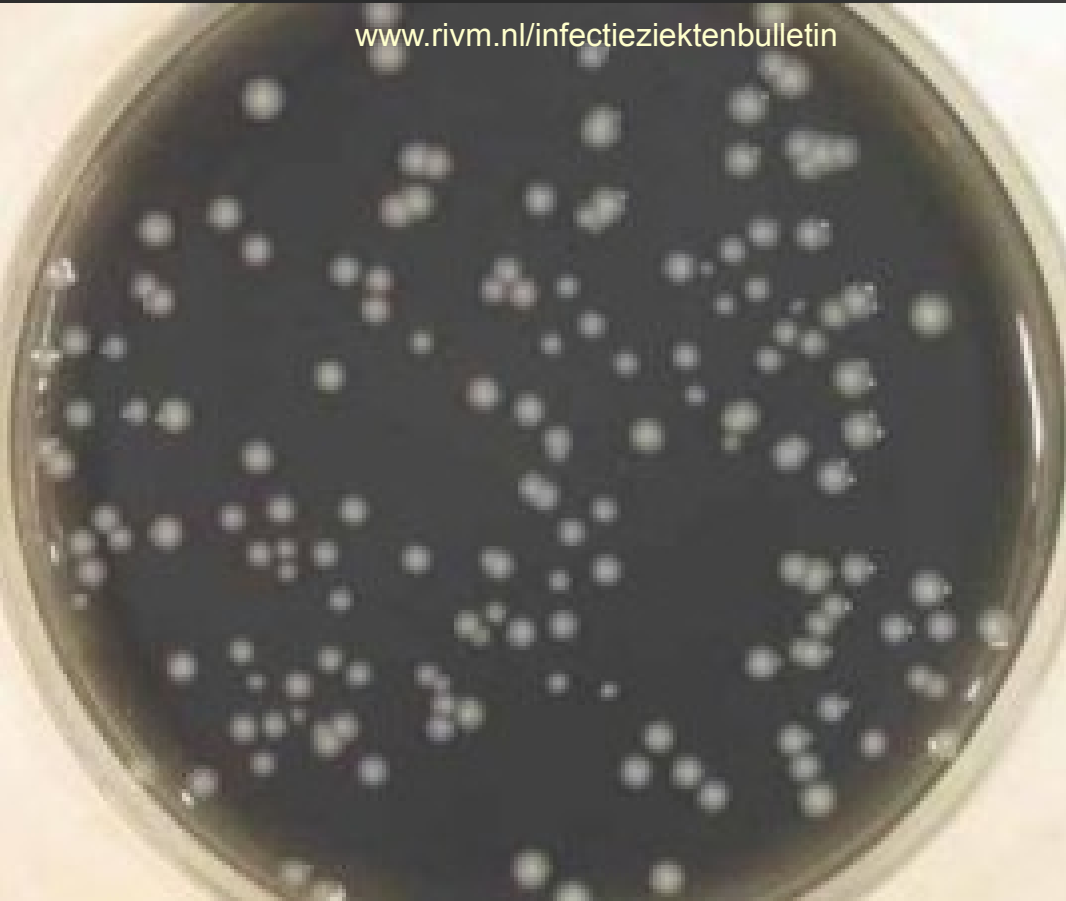
<http://www.eldersllp.com>



ASM MicrobeLibrary.org © Delisle and Tomalty



www.rivm.nl/infectieziektenbulletin



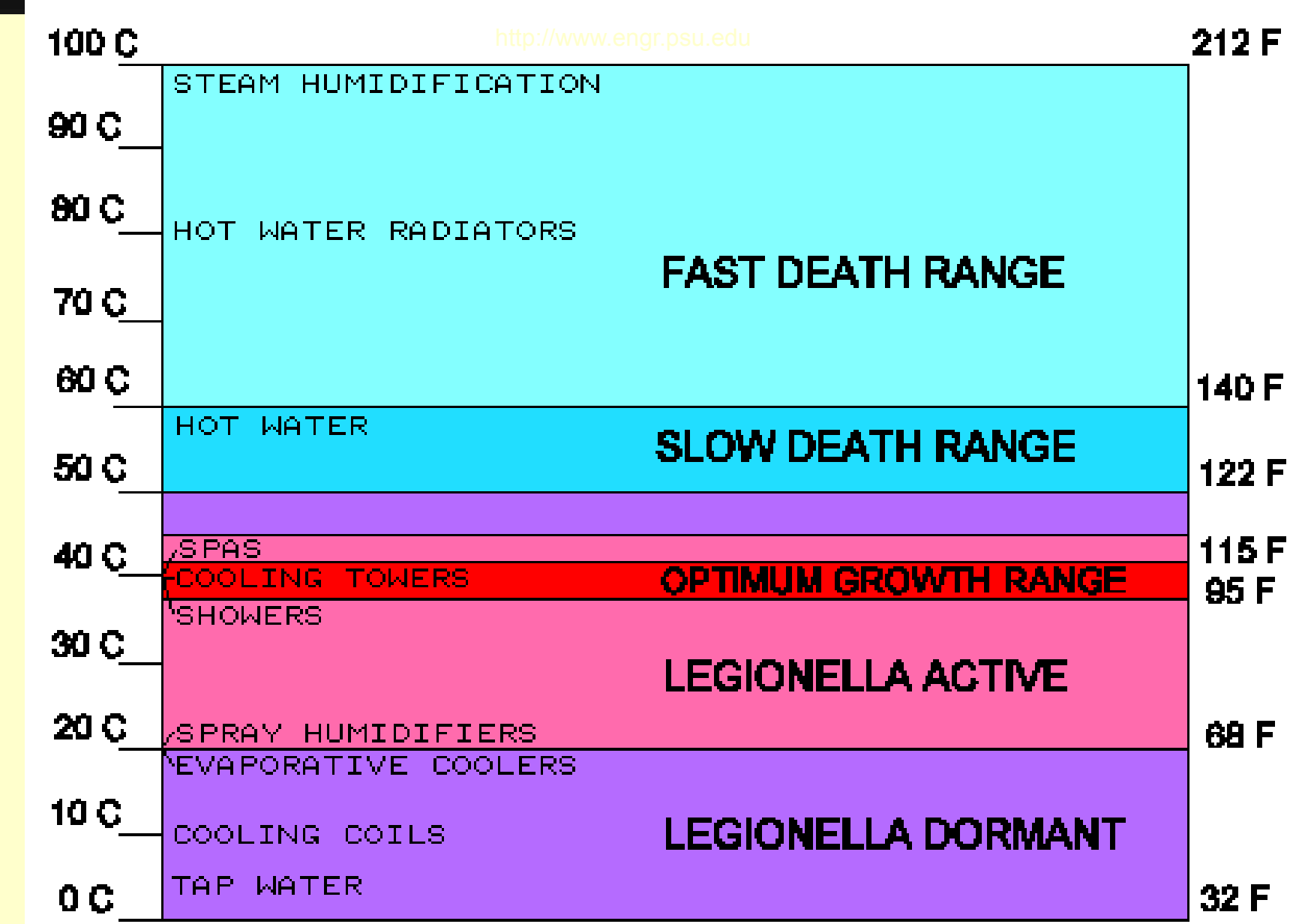
www.chemistryquestion.com

Legionnaire's disease



Legionella and temperature

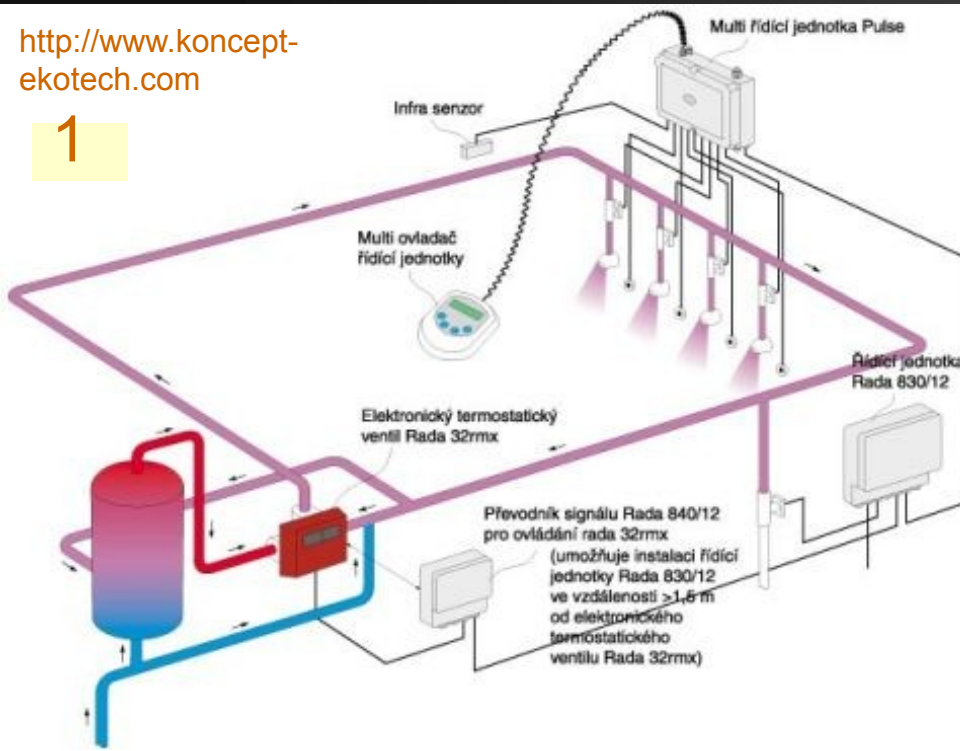
<http://www.engr.psu.edu>



Some ways of water disinfection

<http://www.koncept-ekotech.com>

1



2



- 1 hot temperature
- 2 UV rays
- 3 filtration
- 4 chloration

3



<http://www.awtwater.co.uk>

4

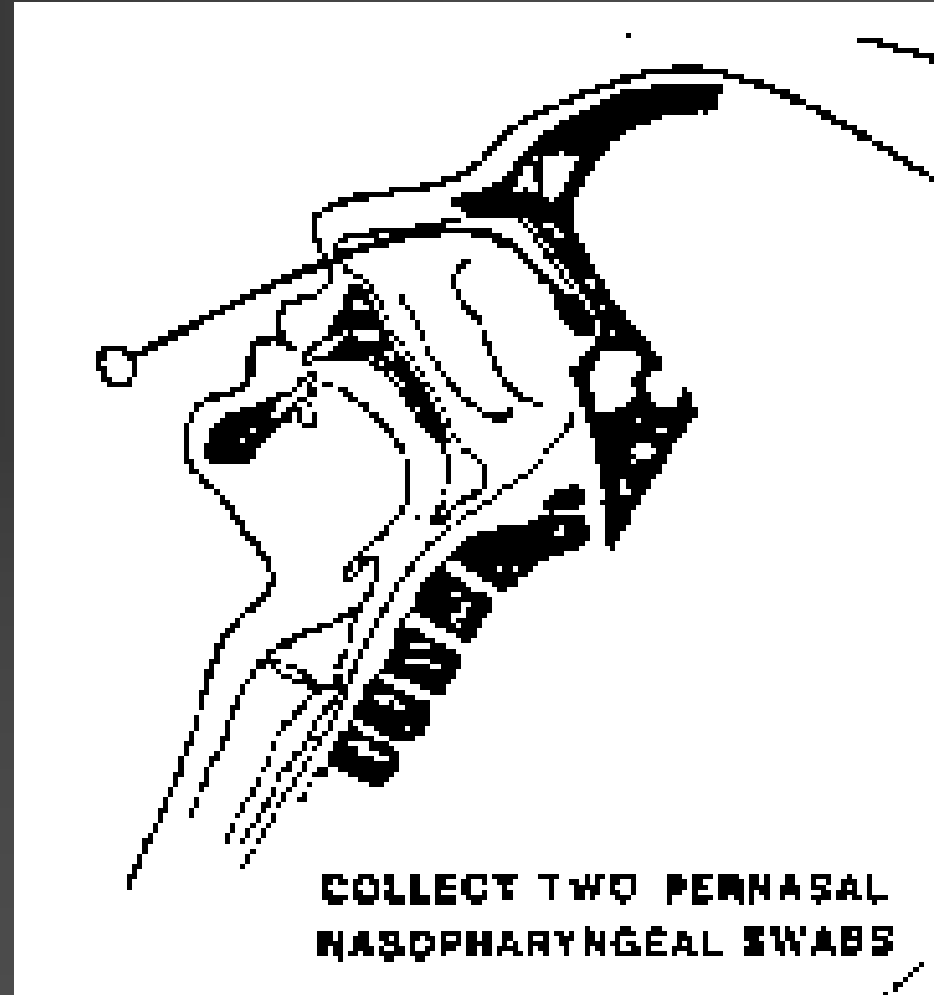


„Other Gram-negative bacteria“

- It is not a real „group“ or „family“. Nevertheless, these are quite rare bacteria, usually not growing on Endo agar, some of them growing on blood agar, and causing various diseases
- Besides ***Legionella***, we should mention at least three genera: ***Bordetella***, ***Brucella*** and ***Francisella***

Genus *Bordetella*

- *B. pertussis* and *B. parapertussis* cause whooping cough
- *B. bronchiseptica* causes various pathologies in humans and animals.
- Whooping cough is very rare due to vaccination
- **Pernasal swab** is used when necessary (swab from nasopharynx, taken through nasal cavity)

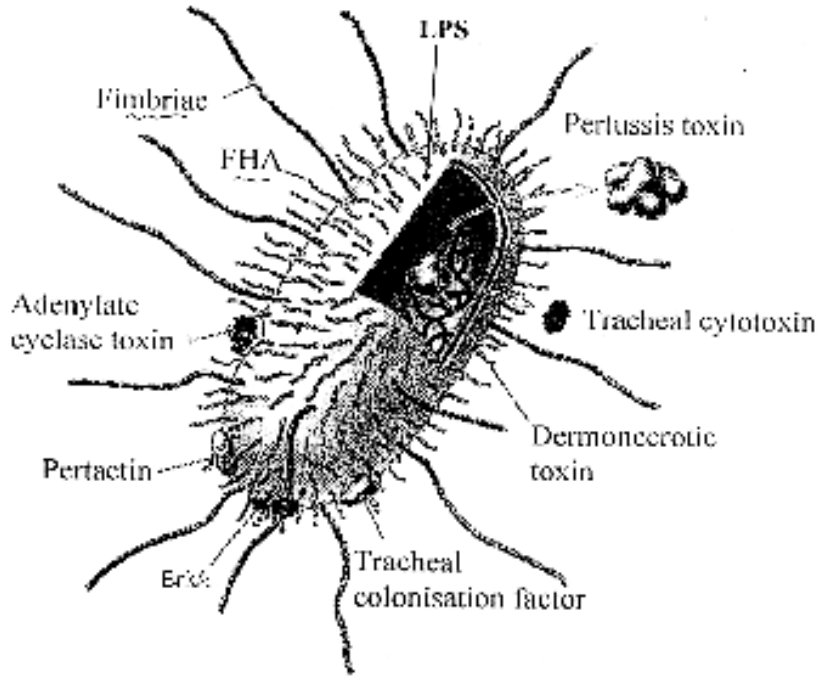


Bordetella

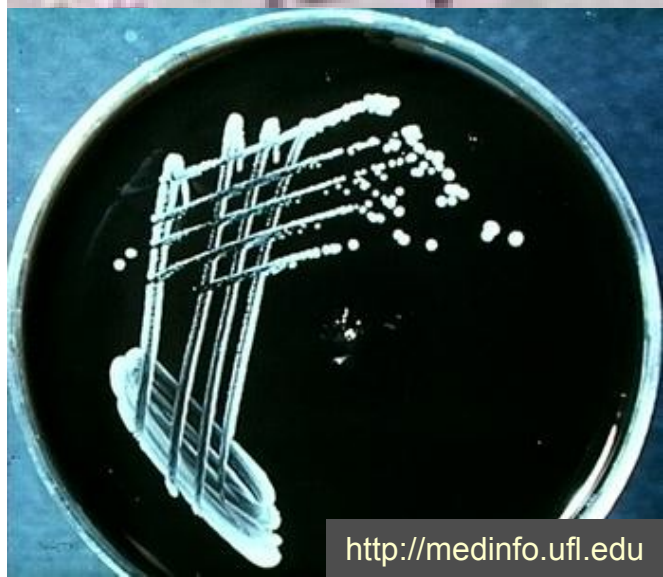


Bordetella pertussis

Causitive agent of Whooping cough



- Small gram negative bacterium
- Many virulence factors
- Adhesins: **Pertactin**
FHA
Fimbriae
- Toxins: **Pertussis toxin**
ACT
TCF
LPS



Bordetella
was
isolated in
1906 by
Jules
Bordet et
Octave
Gengou



Bordetella bronchiseptica: cat infection



Genus *Brucella*



- It is a causative agent of zoonoses
- ***Brucella abortus*** is a bovine pathogen. It infects commonly bovine placenta, causing abortions in cattle. In human it causes so named **Bang disease** (fever, problems with various organs etc.)
- Other brucellae are ***Brucella suis*** from hogs, ***Brucella melitensis*** from sheep and goats and ***Brucella canis*** from dogs

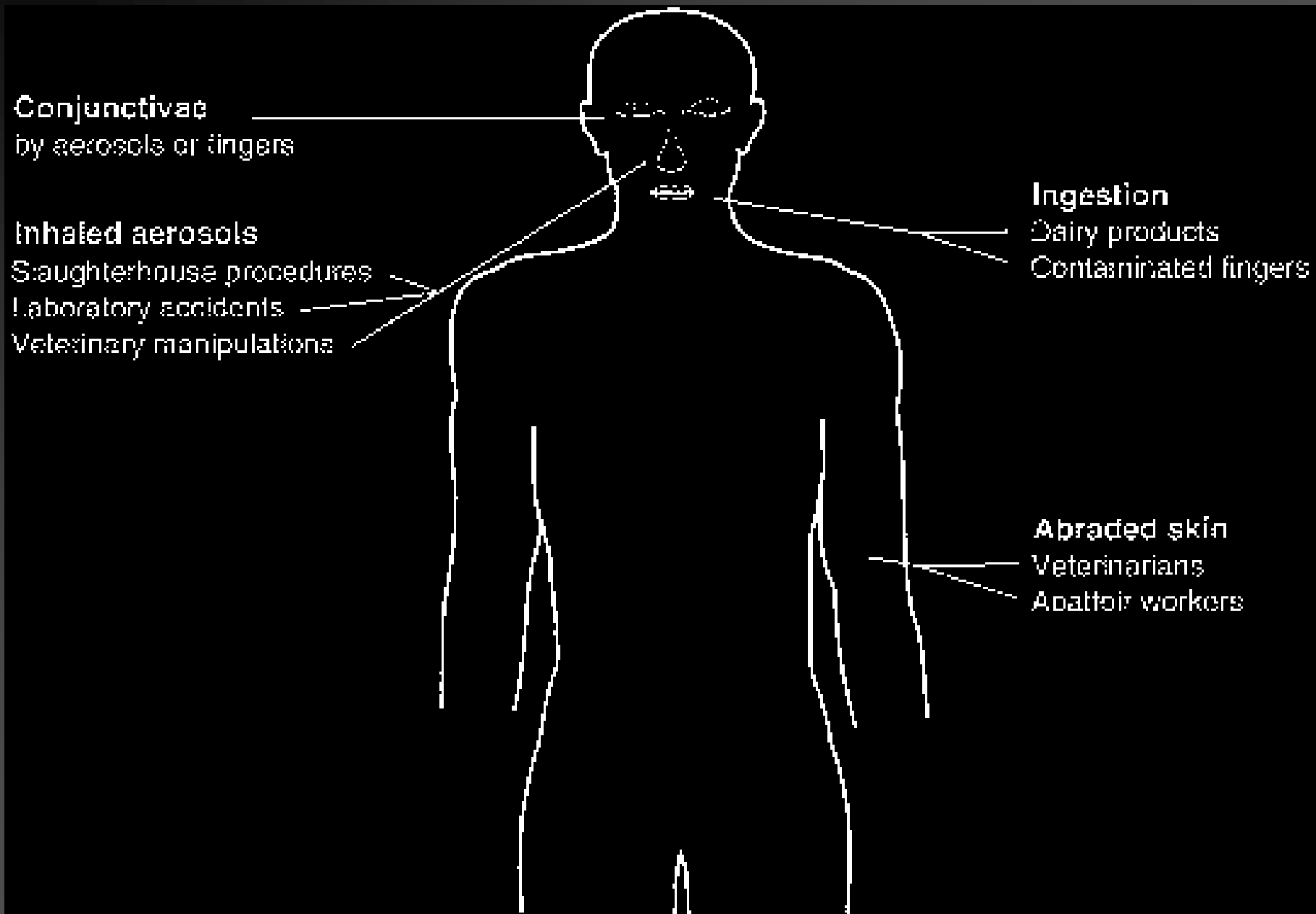
Brucella



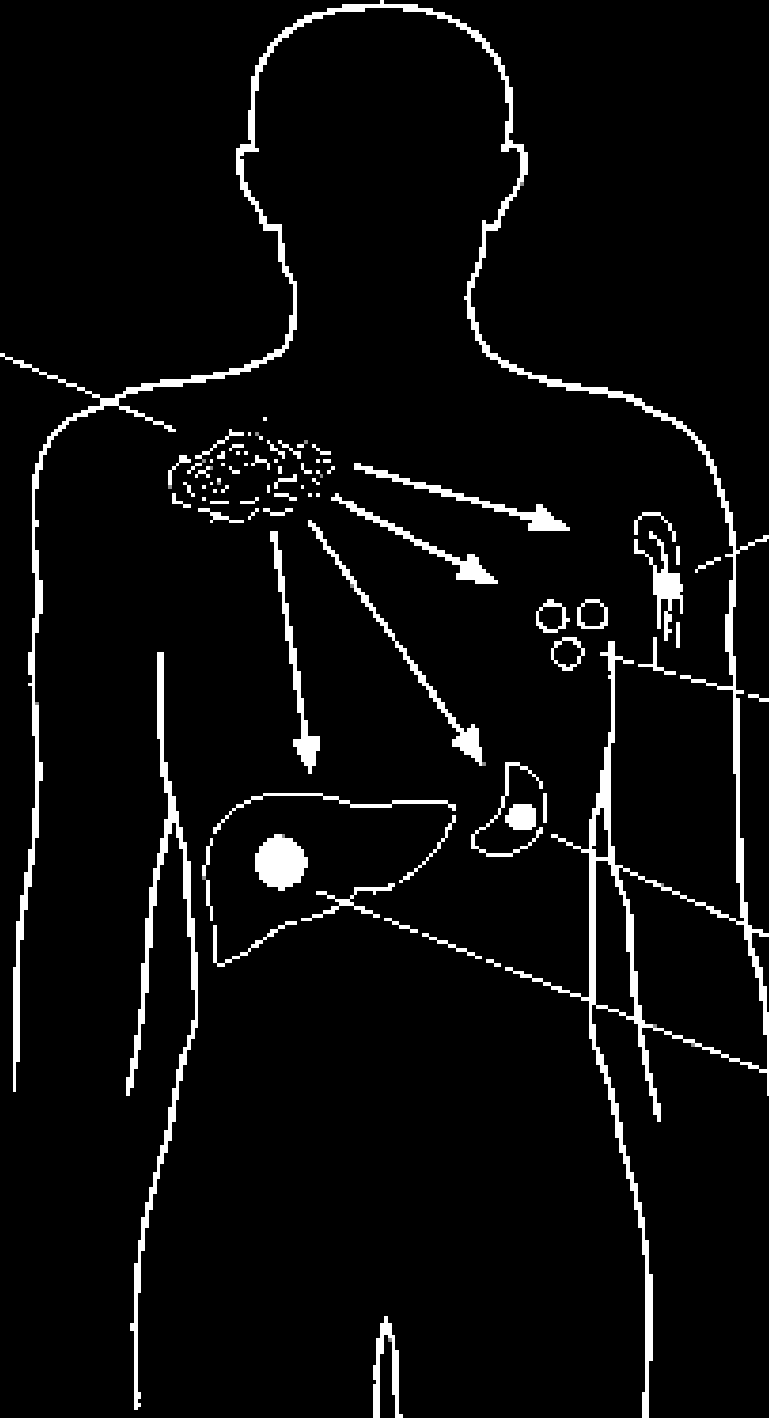
<http://pathport.vbi.vt.edu>

Copyright © 2004 Dennis Kunkel Microscopy, Inc.

<http://upload.wikimedia.org>



Brucella-infected
phagocytic cell



Bone marrow

Lymph nodes

Spleen

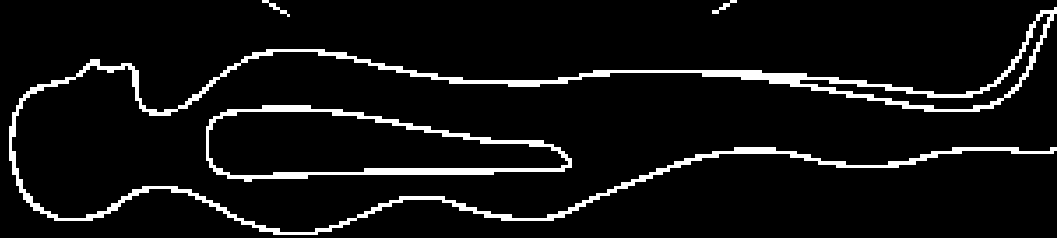
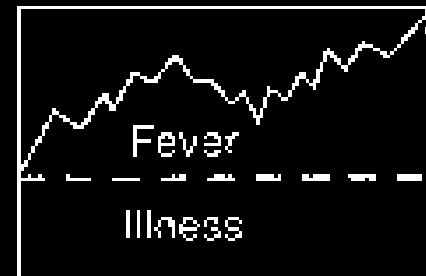
Liver

History and Physical Exam

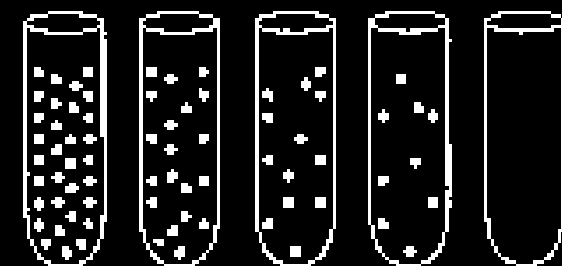
Clinical

Occupation
Raw milk
Fresh cheese
Travel
Symptoms
Signs

Course of disease



Quantitative serology

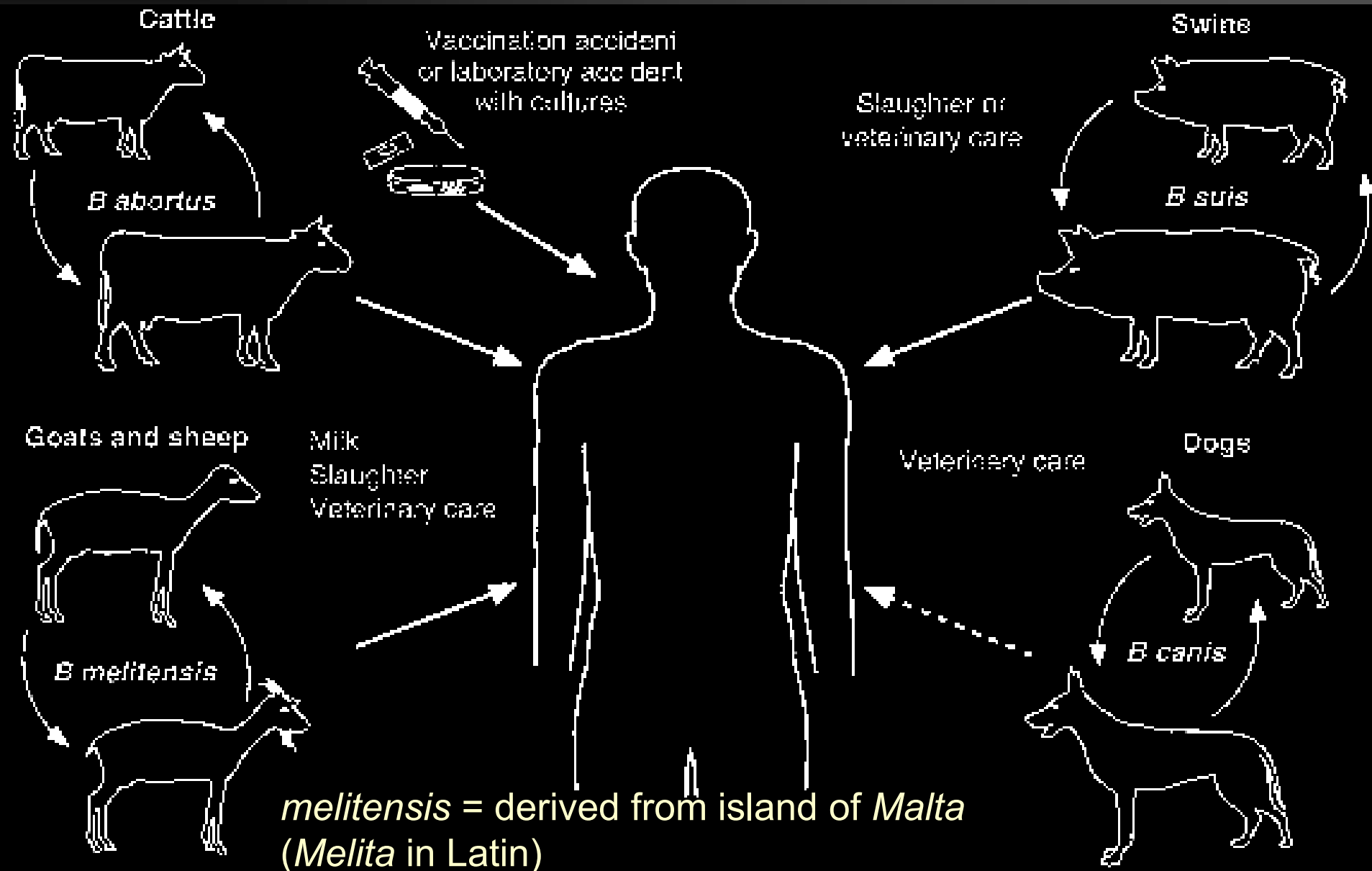


Laboratory

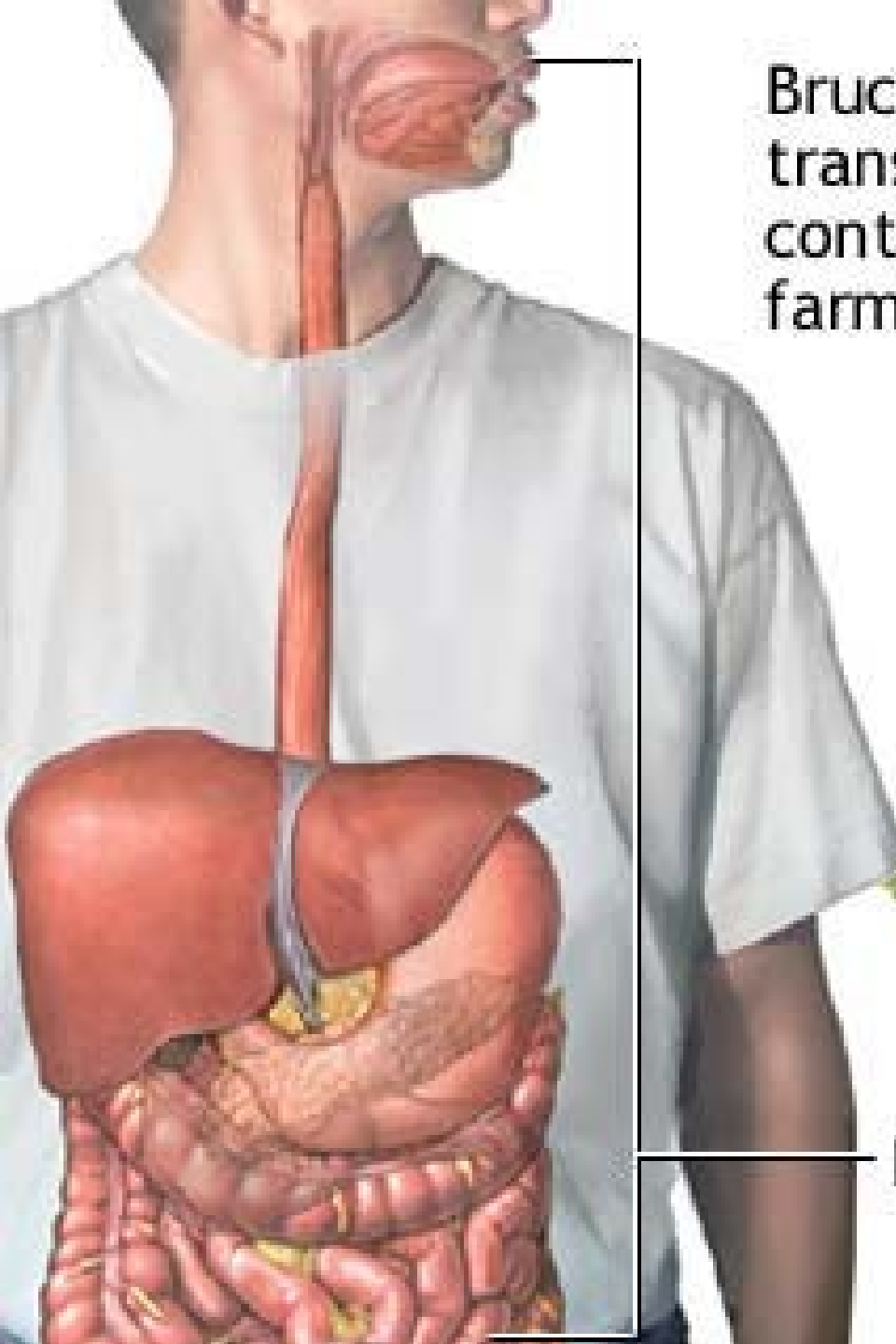
Blood cultures



Remembering Brucella



Brucella bacteria is usually transmitted to humans by contact with infected farm animals.



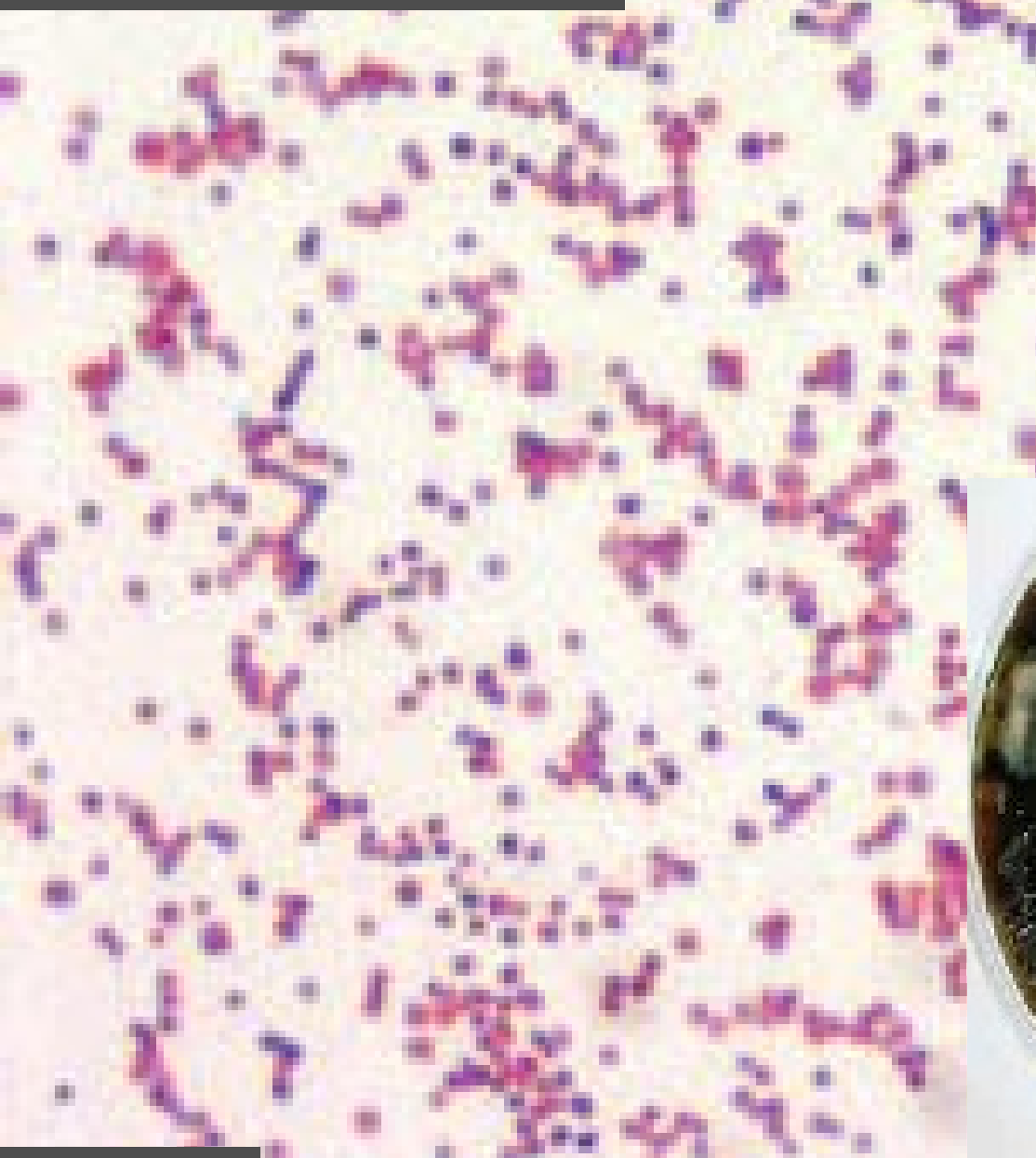
Digestive system

Genus *Francisella*

- Most important species – *F. tularensis*
- Causes **tularemia** – „hare plague“
- **Gamekeepers**, but even more **cooks preparing game** are in risk of infections
- The organism may infect **wounds**, but also it is possible to inhale it, thus leading to **pneumoniae**

Francisella

www.infektionsnetz.at

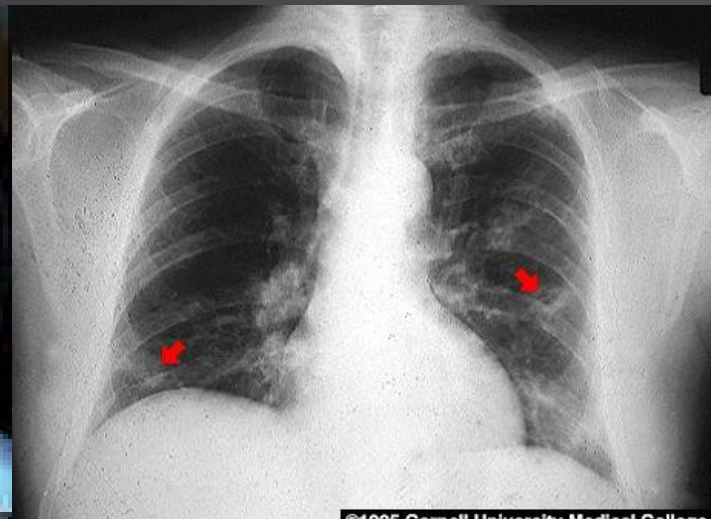


www.wnysmart.org/tularemia

www.stedim.com



<http://www.antropozoonosi.it> (4x)



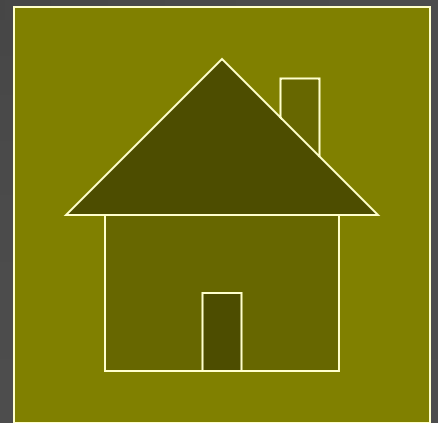
From report about epidemiological situation (IX/2008) – I (abbreviated)

- **Tularemia – A21:** Woman, born 1970 from Valtice, gardener. 20th June GP visit for T 38°C, sore throat, enlarged lymphonodes next to right clavícula. The lymphonode was extirpated. First serological examination negative, second (2nd July) positive
- **Brucellosis – A23:** Man, born 1972, Brno. 10th May intestinal problems, febrilia, hepatopatia, dg. proven serologically. *Brucella abortus* positive, CFT 1:8. In anamnesis a travel to Borneo (Kalimantan) in april, trek in a tropical forest. Delayed report.

(Reported by Public Health Office for South Moravia)

From report about epidemiological situation (IX/2008) – II

- **Pertussis (A37.0):** 4 cases reported (Brno-environment, Hodonín), people aged 14 to 17, all vaccinated, one with missing re-vaccination
- **Parapertussis (A37.1):** 3 cases of disease, coinfection, Brno environment, Hodonín



Diagnosics of G- cocci

Neisseria gonorrhoeae – sampling

In gonorrhoea suspicion it is very important to perform sampling properly. Despite all care it is likely that the pathogen would not be able to survive. That is why it is recommended to send also smear on a slide from cervix and urethra (but not rectum and pharynx)

So „complete gonorrhoea examination“ consists of following parts:

- **urethral swab** in Amies + **smear**
- **cervical swab** in Amies + **smear** (♀)
- **rectal swab** in Amies (no smear)
- **pharyngeal swab** in Amies (no smear)

Sampling and acute diagnostics in purulent meningitis

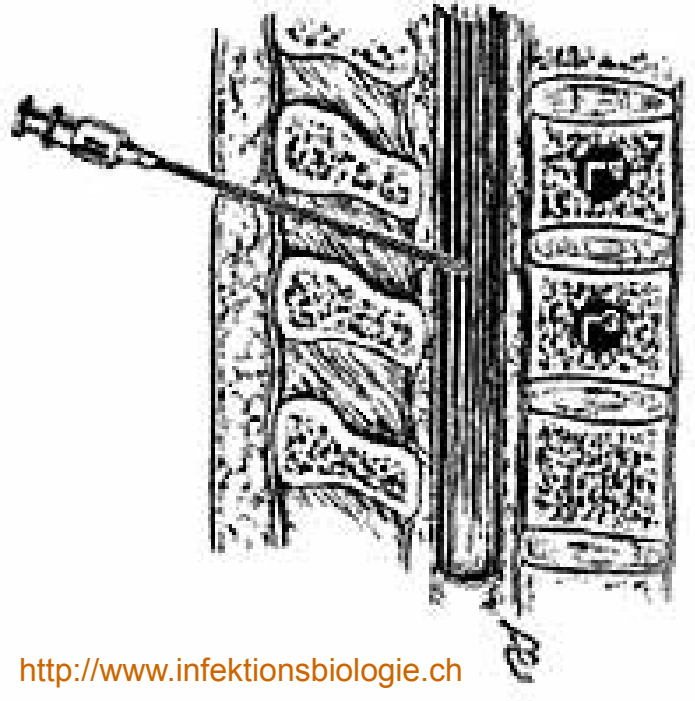
In case of suspicion for purulent meningitis, usually **cerebrospinal fluid** is taken, eventually also blood for blood culture. CSF can be examined biochemically, cytologically and microbiologically.

The person taking CSF can mention, that **CSF is turbid and flows out under the pressure**

In laboratory, two **quick methods** are available

- microscopy
- direct antigen detection

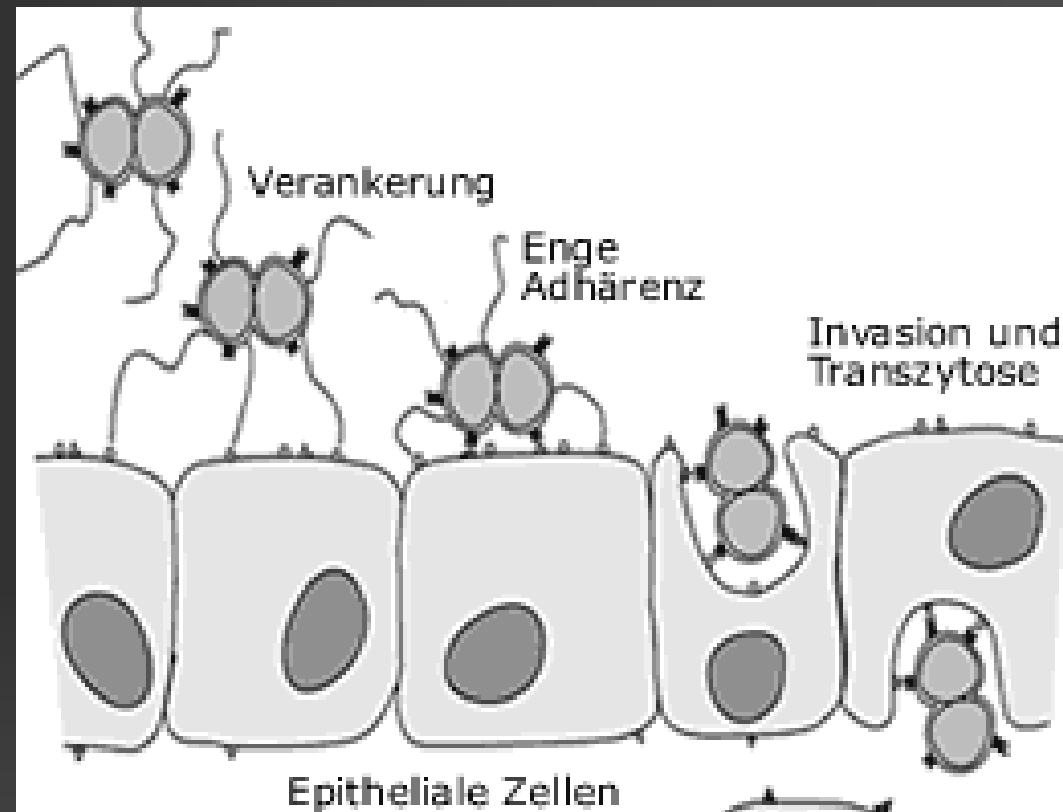
Not regarding the diagnostics and its results, the most important is instant start of patient treatment!



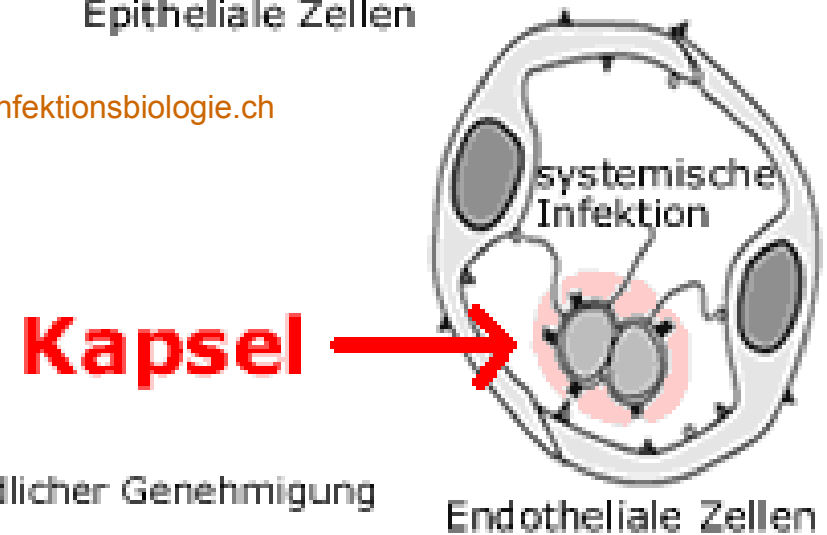
<http://www.infektionsbiologie.ch>

CSF sampling

How they
come into
the tissue



<http://www.infektionsbiologie.ch>



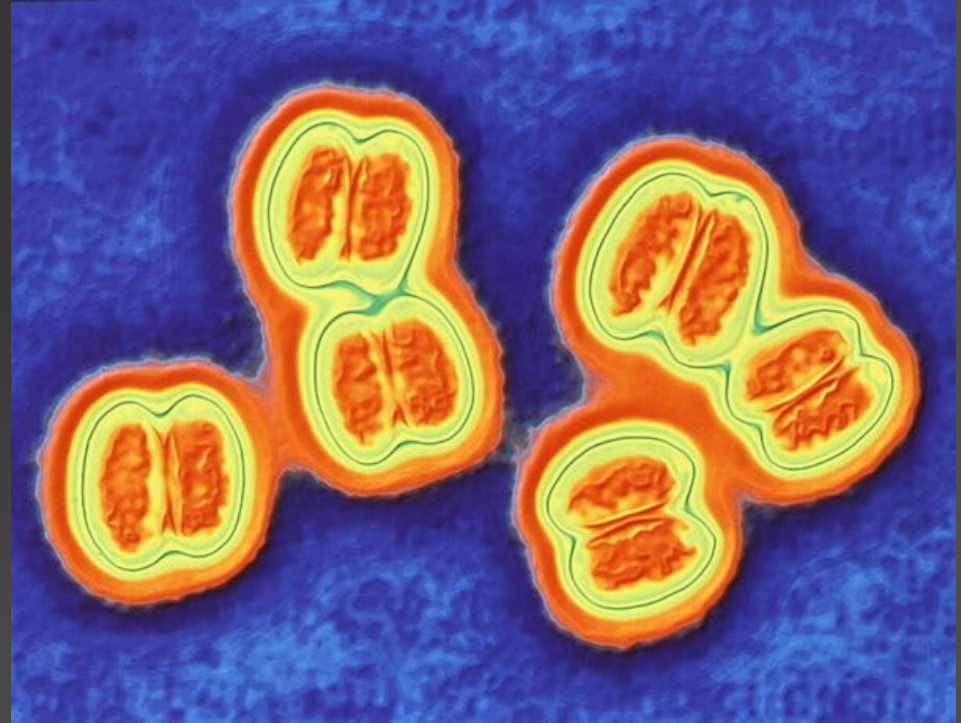
Mit freundlicher Genehmigung
© Dehio

Endotheliale Zellen

Neisseriae and Moraxellae – characteristics I

<http://medicine.plosjournals.org>

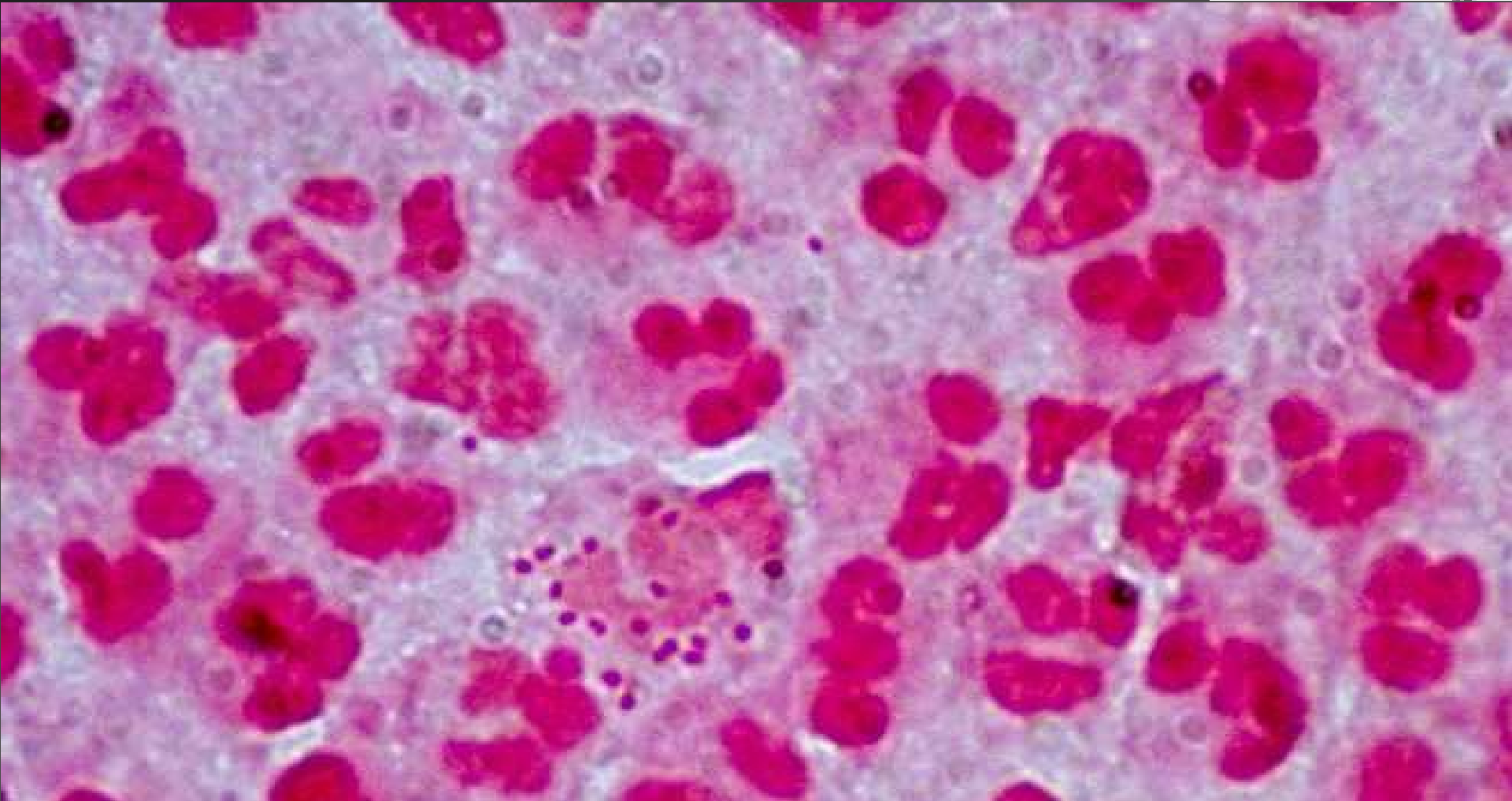
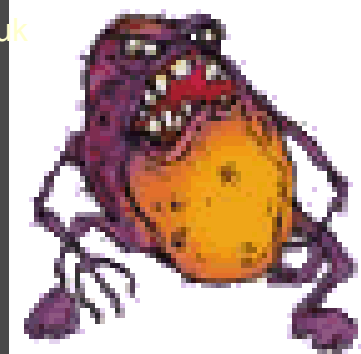
- **Microscopy:** G – diplococci, coffee bean shaped, often intraleucocytar (see next slide)



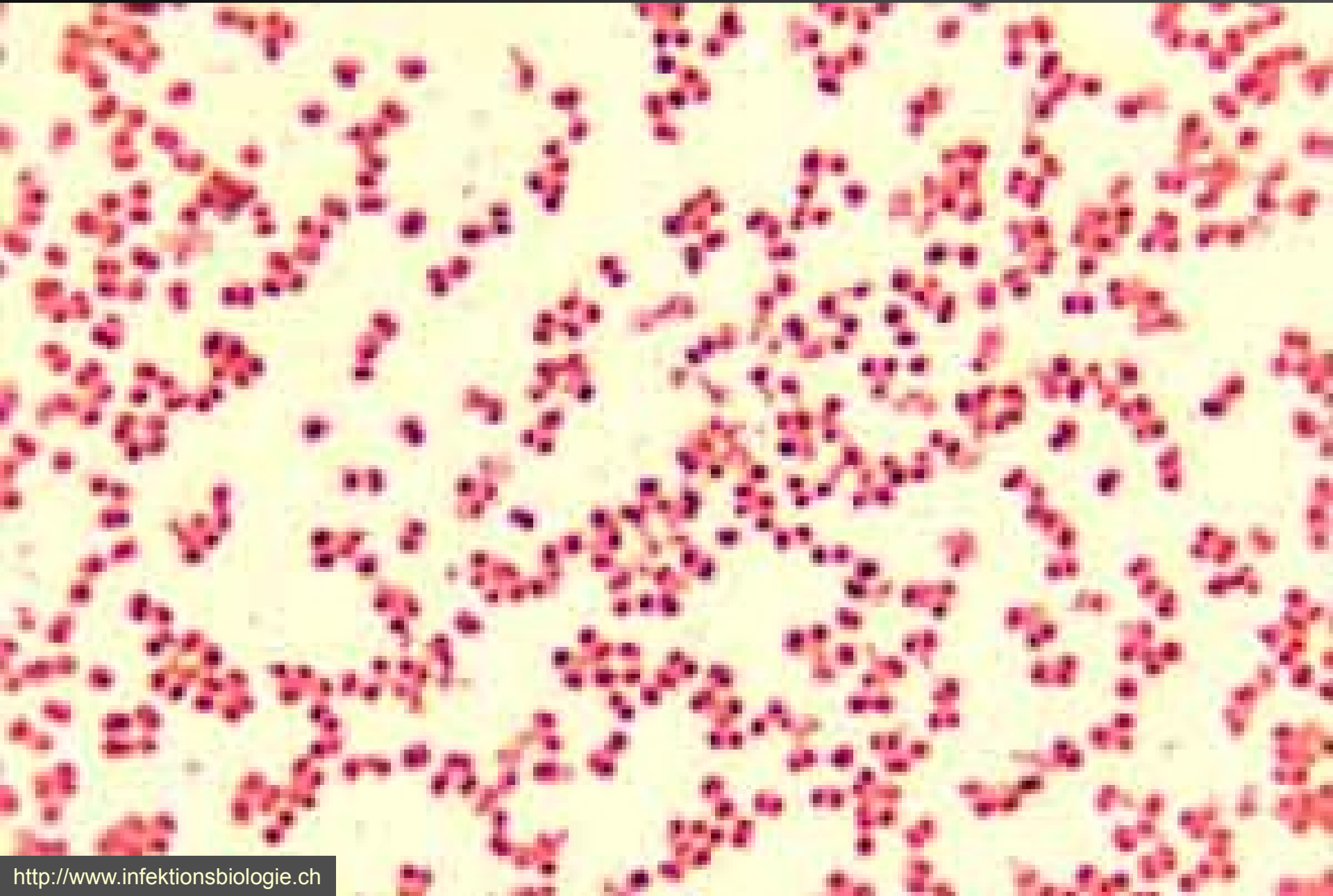
Some neisseriae a moraxellae may be prolonged and so they might be coccobacilli or bacilli (e. g. Neisseria elongata)

Gonococci

<http://www.warwickshire.gov.uk>



Meningococcus



Microscopic Pictures Of Neisseria (Gram-negative Diplococci)

Neisseria Gonorrhoeae



Neisseria Meningitidis
intracellularis in spinal fluid



■ β -lactam drugs

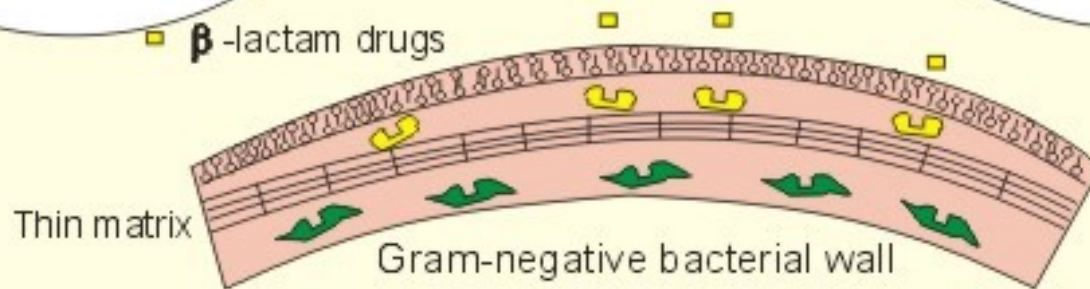
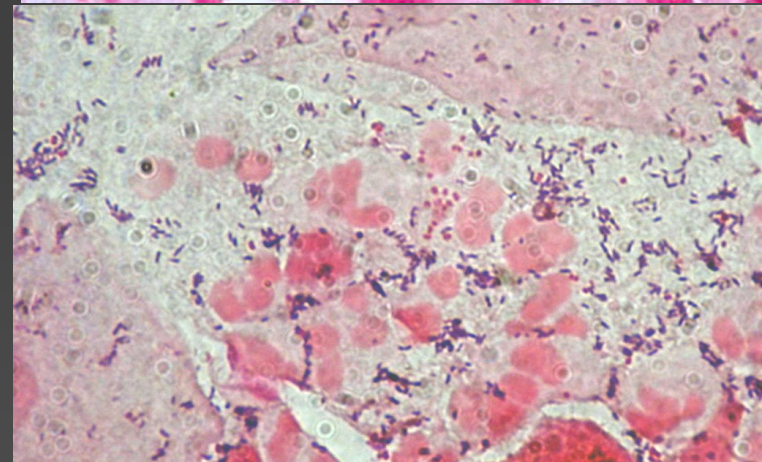


Fig. 33-3

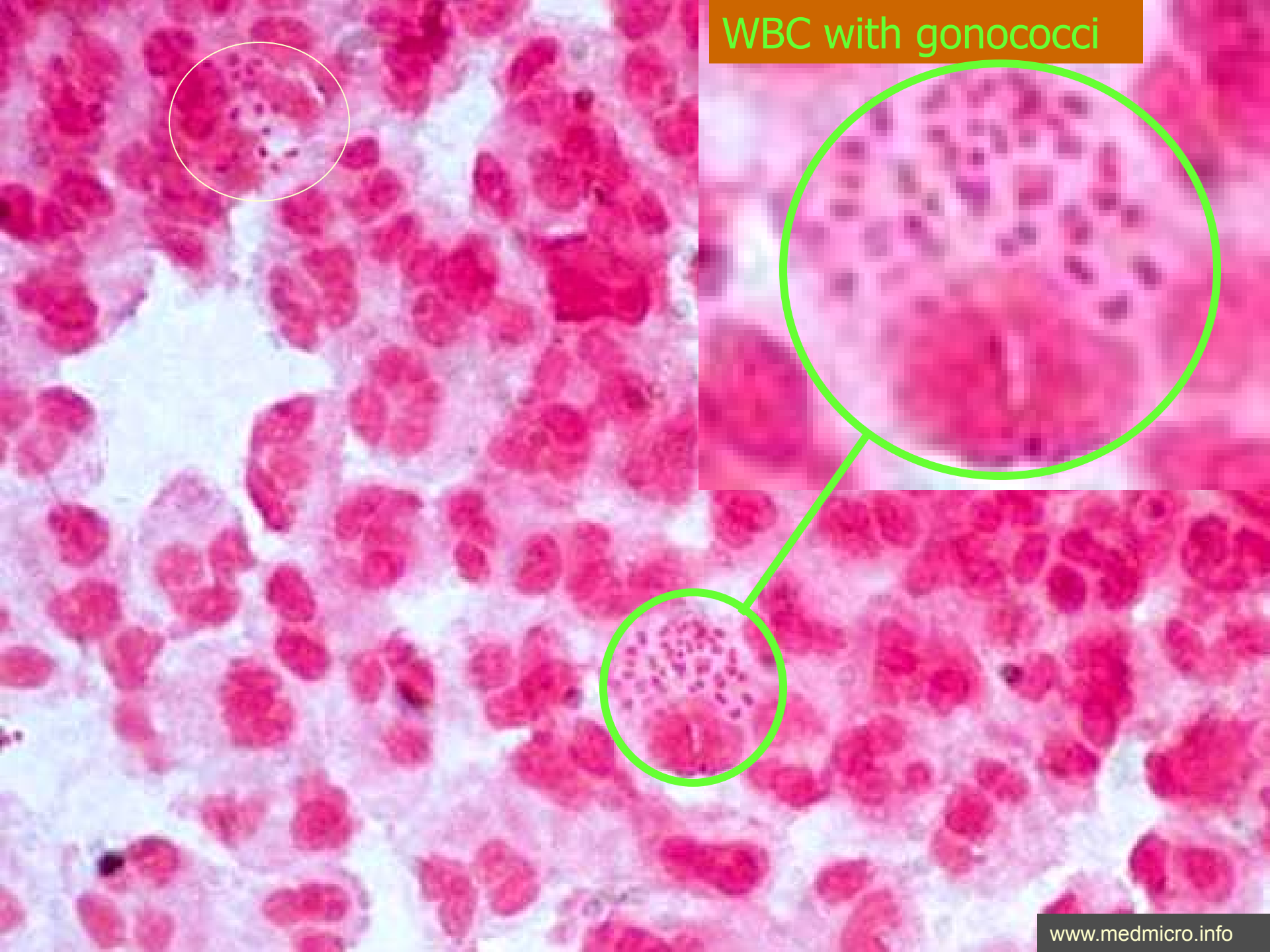
Observation of gonorrhoea smear

- Gonococci (but also meningococci) are Gram-negative diplococci, coffee-bean shaped, mostly intracellular. Presence of cocci inside leucocytes is their typical property.



In females, the microscopy is slightly different from males.

WBC with gonococci

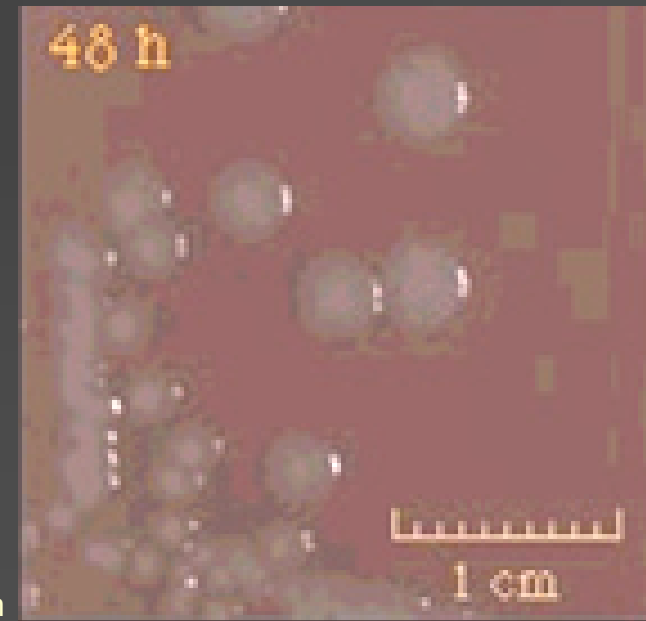


Neisseriae and Moraxellae – characteristics II

- **Culture:** tiny, colourless or yellowish (according to the species) colony, growing (species specific) on blood or chocolate agar
- Blood agar or chocolate agar necessary also for **diffusion disc test**



Gonococcus →
← Meningococcus



Culture of *Neisseria* and *Moraxella*

There exist differences between G- cocci in culture properties:



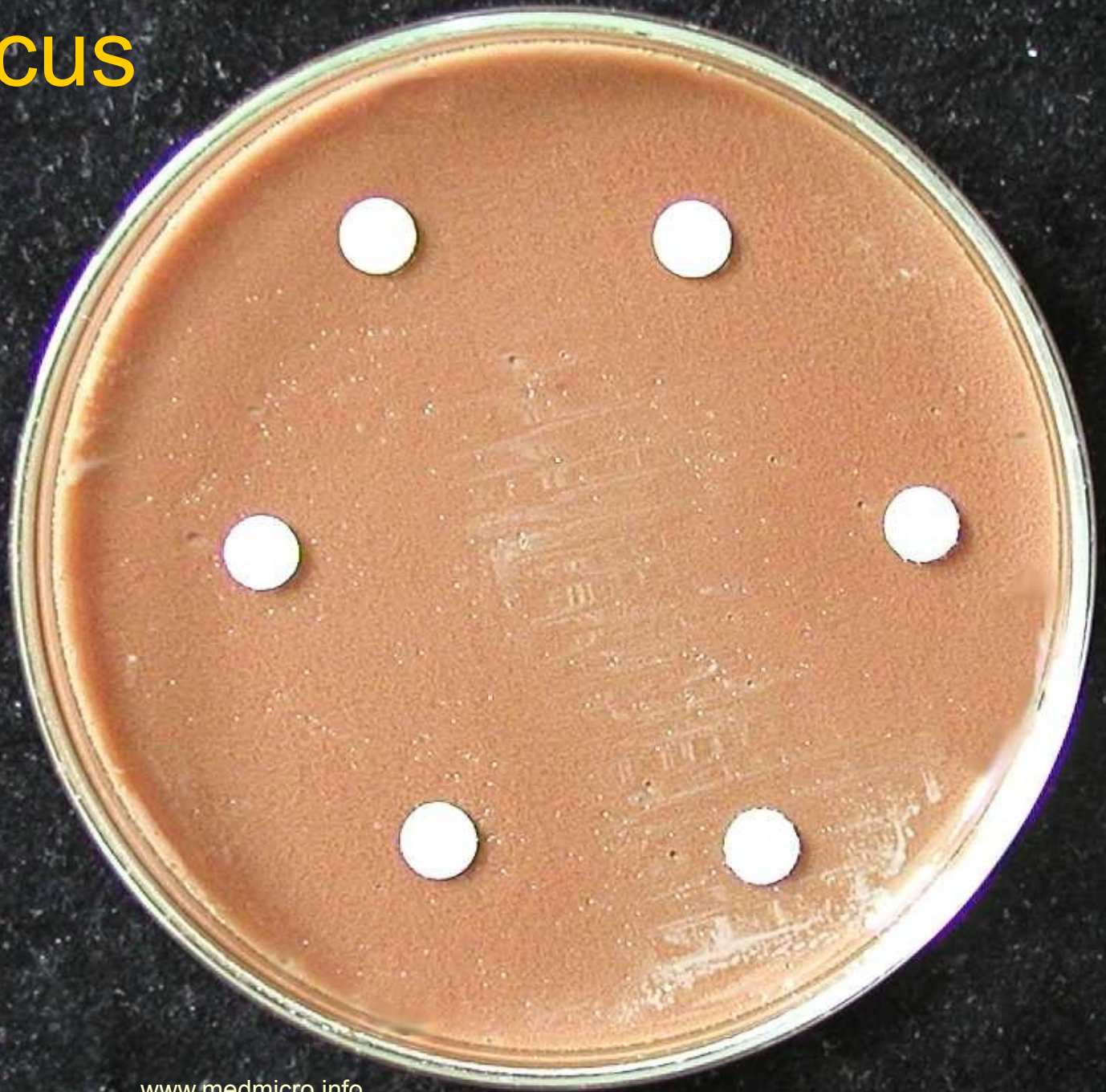
Oral neisseriae and moraxellae (O+M) grow on blood agar (BA).

Meningococci (ME) grow only on nutrient-rich variants of BA.

Gonococci (GO) do not grow on BA at all, they require chocolat agar.

	BA	BA+	ChA
GO	NO	NO	YES
ME	NO	YES	YES
O+M	YES	YES	YES

Gonococcus atb testing



Neisseriae and Moraxellae – characteristics III

- **Biochemical diagnostic:** all of them are catalase positive, oxidase positive; *Moraxella catarrhalis* also positive in a specific test, called INAC (indoxyl-acetate test)
- **Antigen analysis:** performed usually by means of by latex agglutination, very important in meningococci for differentiation between serogroup B (not preventable by vaccination) and other serogroups (preventable)

Basic biochemical tests

- **Quick tests** with diagnostic strips simplify the diagnostics
- Neisseriae are **oxidase positive**, moraxellae too, but their reaction might be late.
- Moraxella is typically **positive in INAC test**
- INAC test is similar to oxidase test, but **the strip should be moistened and one has to wait 5 minutes. The colour is blue-green.**

Species determination of neisseriae and moraxellae

- For detailed identification of neisseriae and moraxellae, biochemical tests are used, in Czechia mostly NEISSERIAtest, in other countries other tests (at those below or on the next slide)
- Both pathogenous neisseriae have little biochemical activity: **Gonococcus** splits **glucose** only, **Meningococcus** glucose and **maltose**.





NEISSERIA 4H

CONT. NEG.	GLU +	MAL +	FRU -	SAC -	ONPG -	TRI -	PS 24h
GGT +	NO ₃ -	NO ₂ (1)	NO ₂ + (2)	1395			

Neisseriae and Moraxellae – differential diagnostics 1

- **Gram staining:** G – (diplo)cocci
- **Oxidase** differentiates some other G– cocci (e. g. *Acinetobacter* – a G– non-fermenter – is also often coccoid)
- **Growth on various media** differentiates
 - **gonococcus** (growth on chocolate agar only),
 - **meningococcus** (growth on rich blood agar and chocolate agar)
 - **oral neisseriae** (growth on both poor and rich blood agar and chocolate agar)
 - ***M. catarrhalis*** (growth like oral neisseriae)

Neisseriae and Moraxellae – differential diagnostics 2

- **INAC test** (a strip test similar to oxidase test) – positive in *Moraxella catarrhalis*
- **Complex biochemical test** (NEISSERIAtest), is used especially for mutual differentiation of oral neisseriae
- **Antigen analysis** (determination of meningococcal serogroup in invasive infections)

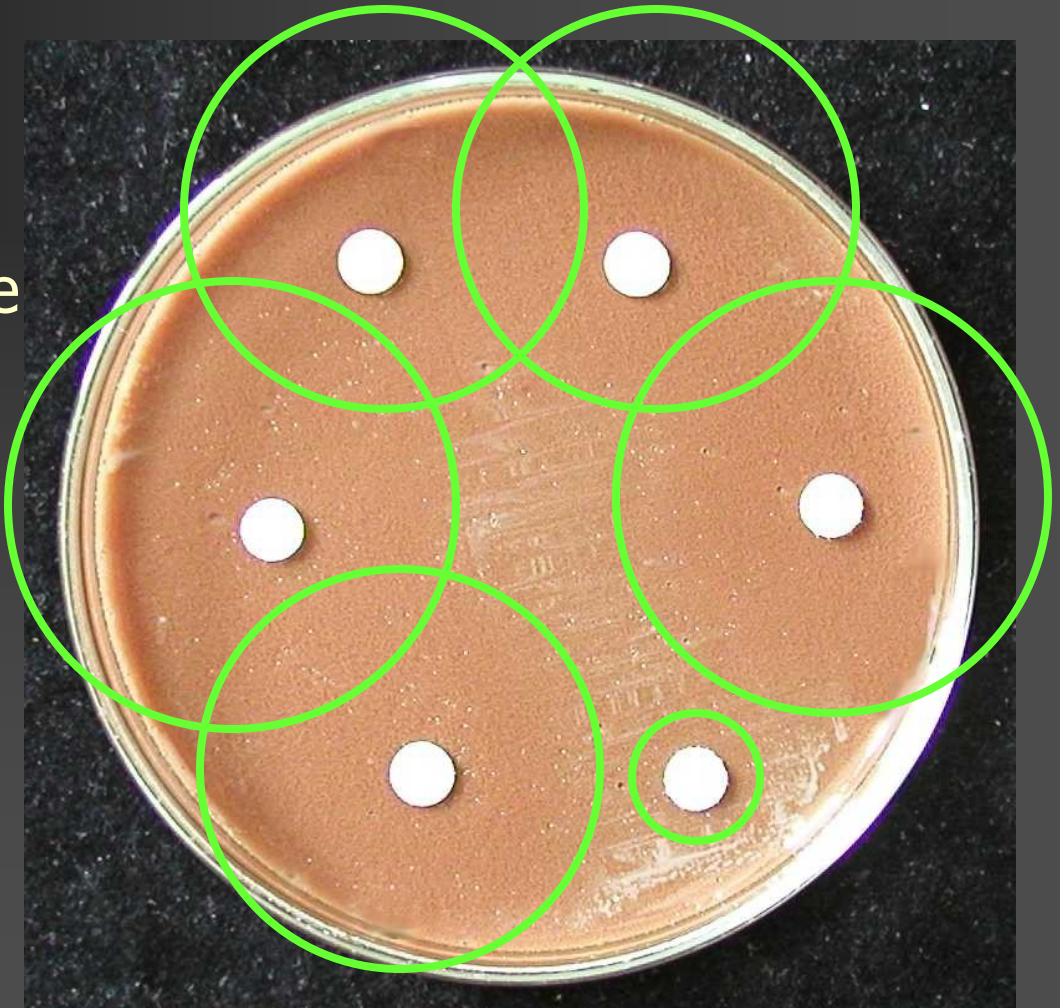
Antibiotic susceptibility testing in neisseriae and related bacteria

- Antibiotic susceptibility in pathogenous neisseriae is determined on media, on which they are able to grow, i. e. not on MH agar
- First election drug for meningococcus is even today classical penicillin. It is used also for Gonococcus. Other drugs are macrolids, quinolones or ceftriaxone.

In neisseriae, zones are often large and confluent.

When the zones are so large that it is not possible to measure them, we do not measure them and we write down simply „susceptible“.

Hypothetical margins of zones are in green: mention, that they are mostly either confluent, or behind the margin of the Petri dish!

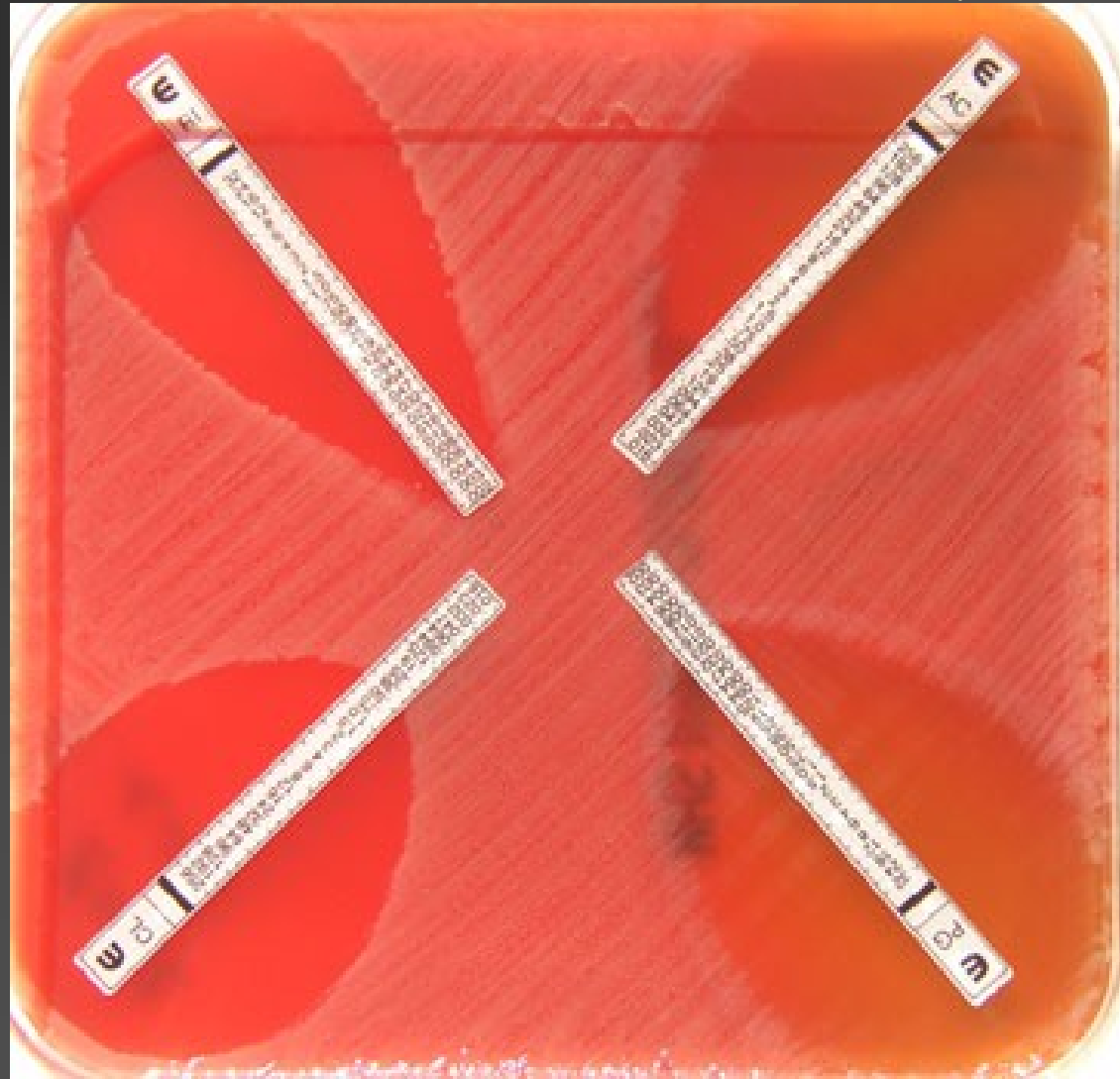


A set of antibiotics against pathogenic neisseriae

Antibiotic	Abbr.	Reference zone
Penicillin (basic penicillin)	AMP	28 mm
Chloramphenicol	C	18 mm
Azithromycin (macrolide)	AZM	12 mm
Doxycycline (tetracycline)	DO	19 mm
Ampicillin (aminopenicillin)	AMP	29 mm
Co-trimoxazol (mixture)	SXT	16 mm

Somewhere, E-test is used

www.actu-pharo.com



Antigen detection / antigen analysis

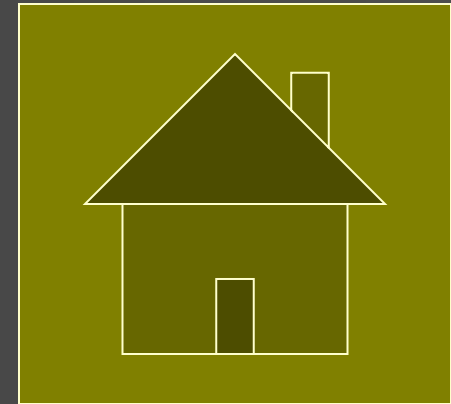
- Agglutination set for CSF agglutination is used for identification of pathogens. In case of a may be identified.
- In *Meningococcus* also the serogroups may be assessed. Therefore we can use it also for antigen analysis of an already cultured strain.

Photo O. Z.



Antigens detected at CSF antigen analysis

- *Neisseria meningitidis* A
 - *Neisseria meningitidis* B
 - *Neisseria meningitidis* C
 - *N. meningitidis* Y/W135
- } **teens, children**
- *Haemophilus influenzae* b **children**
 - *Streptococcus pneumoniae* **seniors**
 - *Streptococcus agalactiae* **newborns**
 - **In green colour there is the age group, where the infection is the most typical**



Diagnosics of „other G– bacilli“

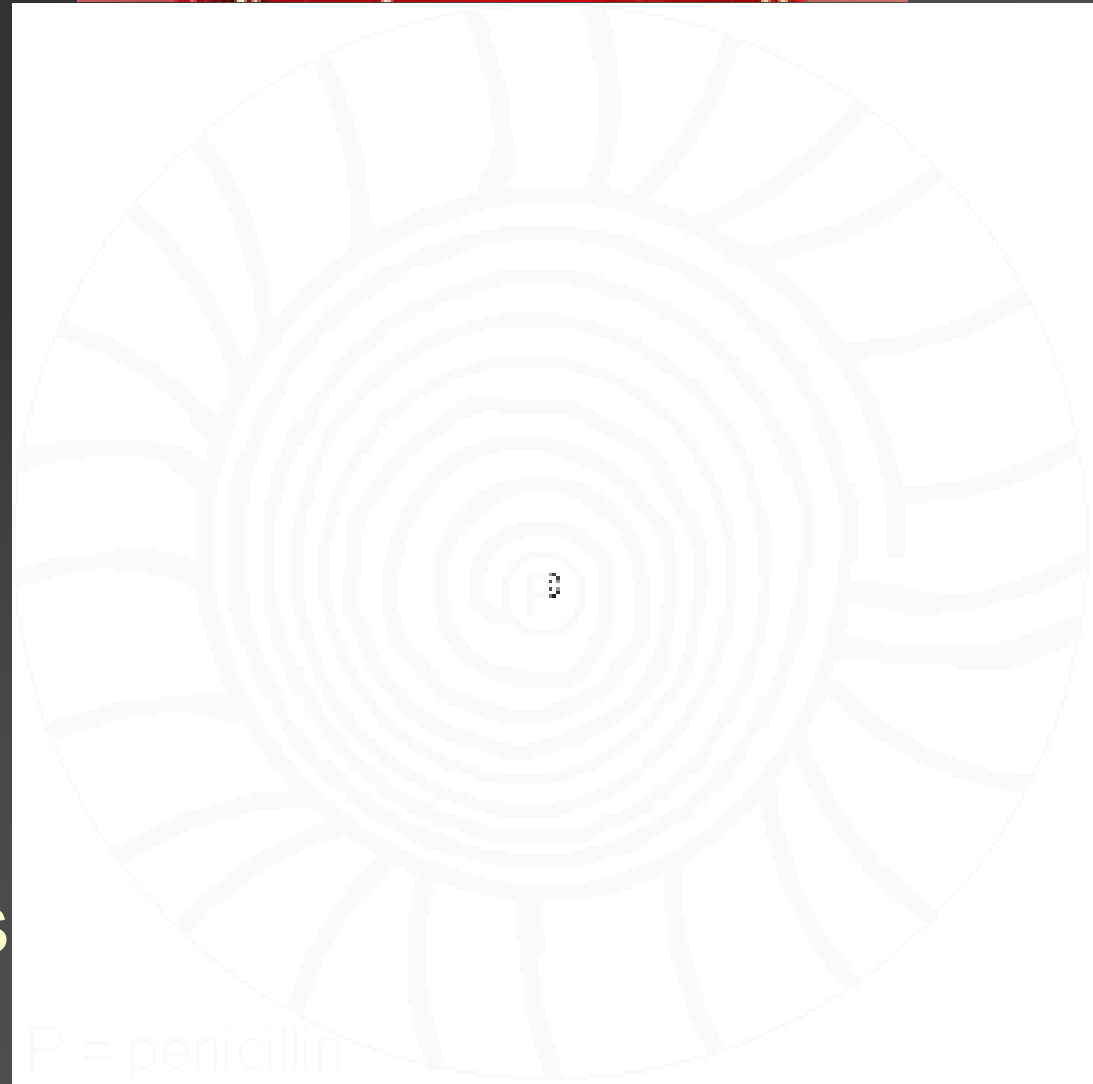
„Other gram negative“ characteristic

- **Microscopy:** G – bacilli, often short
- **Culture:** we use mostly special media (BG for *Bordetella*, BCYE for *Legionella* etc.)
- **Biochemical diagnostic:** some characteristics might be used
- **Antigen analysis:** sometimes useful
- **Indirect methods** used, mostly for tularemia
- **Differential diagnostics** is not algorithmic here. Usually specimens are sent to the laboratory with suspicion for legionellosis, whooping cough, Bang disease etc.

Bordetella: Inoculation on BG agar

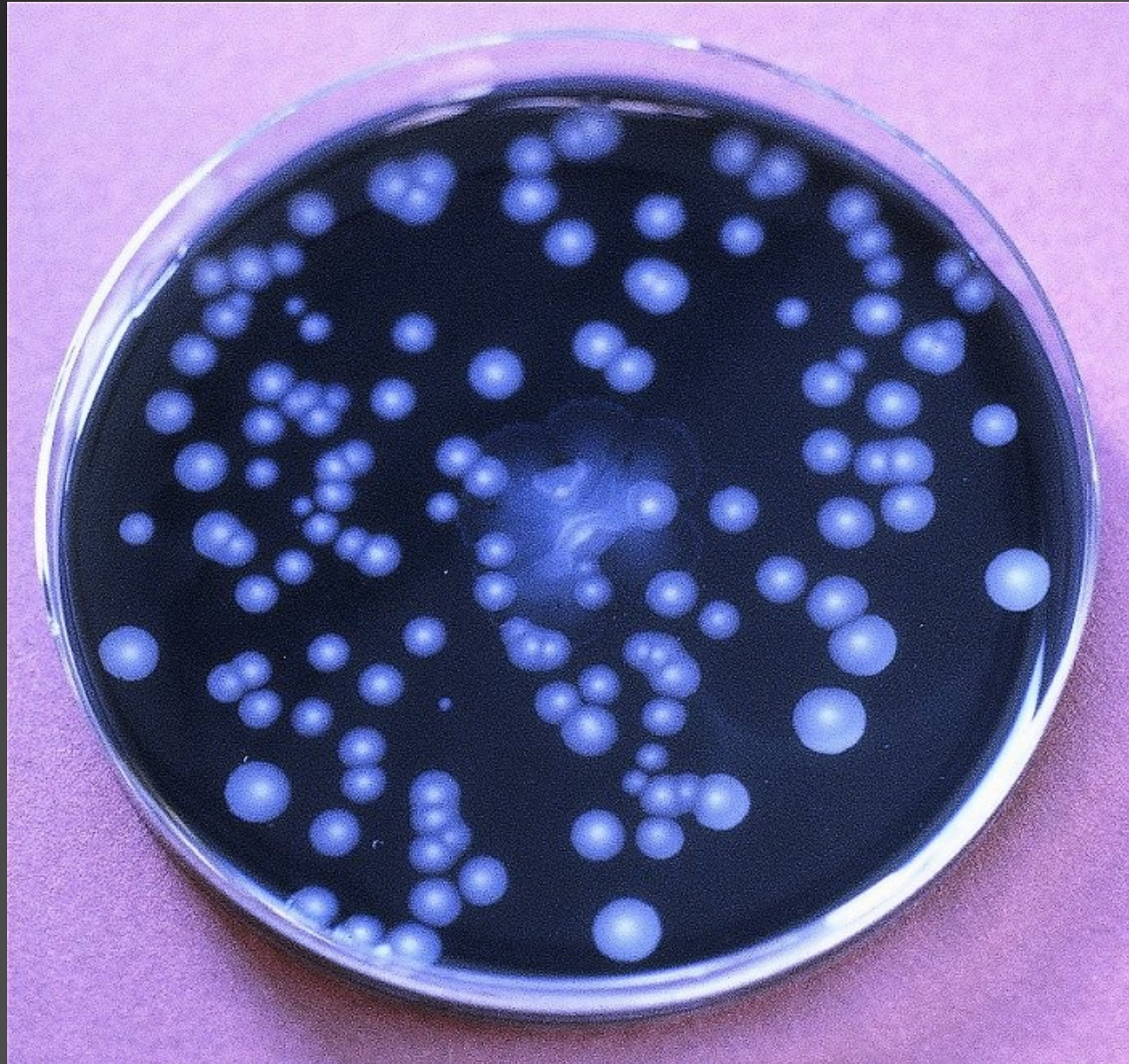
This strange way of inoculation is used, as the experience showed, that it increases successful diagnostics.

- 1) inoculation of central field (to a drop of penicillin)
- 2) Spiral to margins
- 3) Radial rays



BCYE medium for Legionella

Buffered
Charcoal
Yeast
Extract

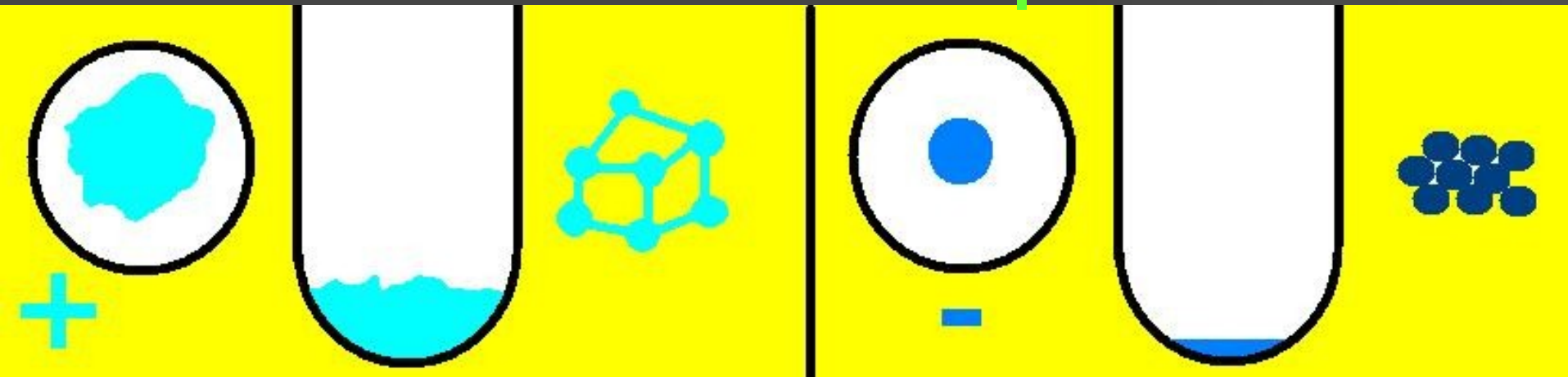
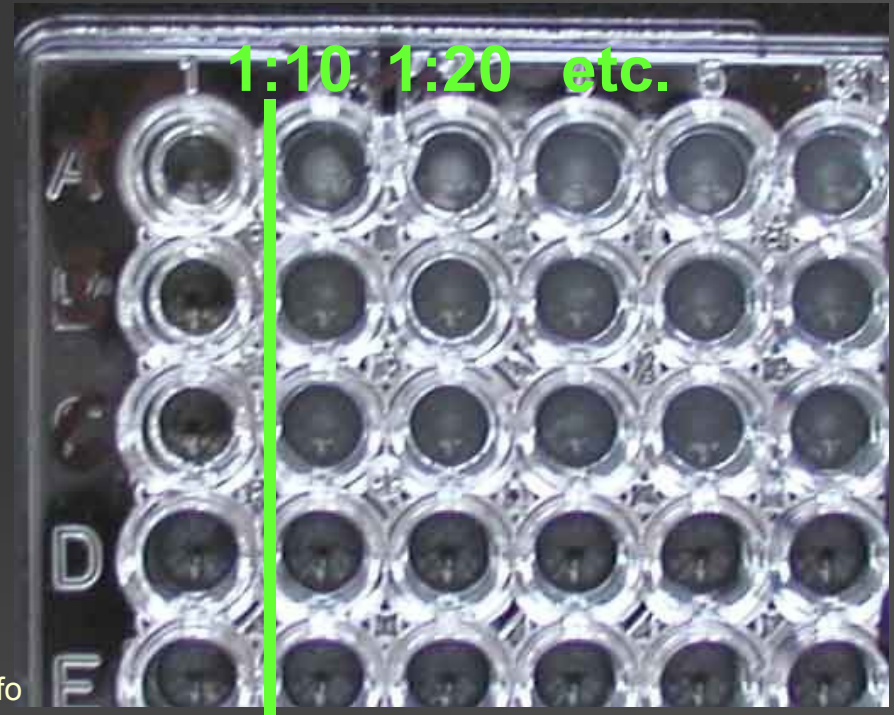


Francisella diagnostics: Reading the agglutination set

Titre is counted, i. e. the highest dilution giving still a positive reaction

Any titer (i. e. everything except negative results) is interpreted as suspicious!

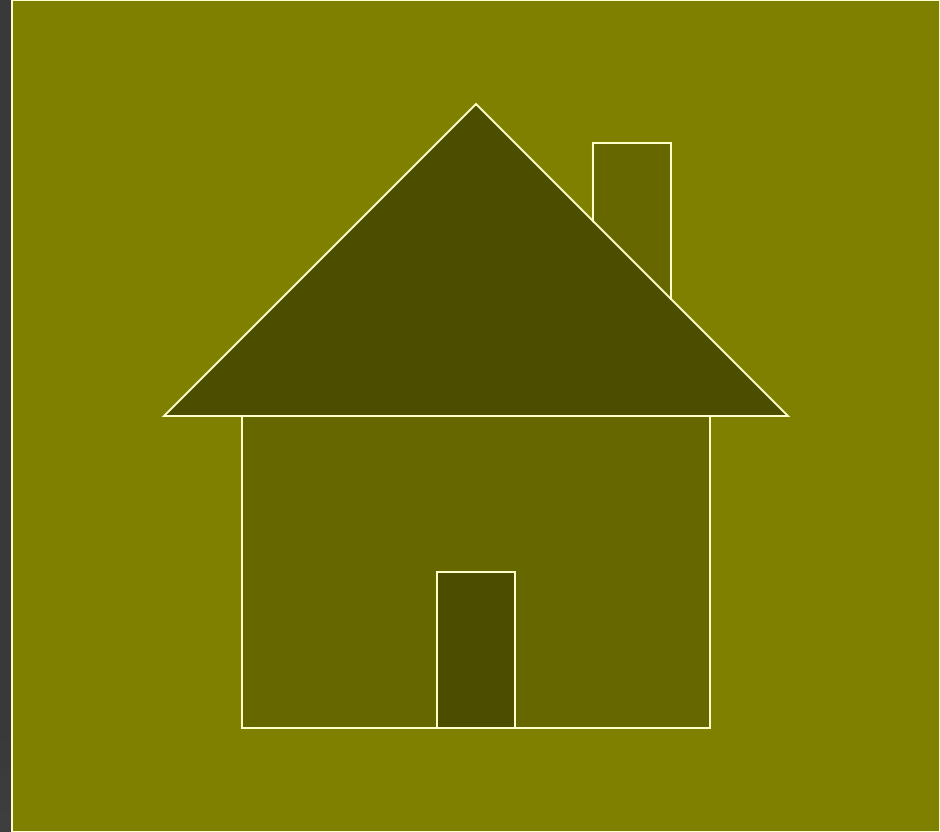
www.medmicro.info



The End

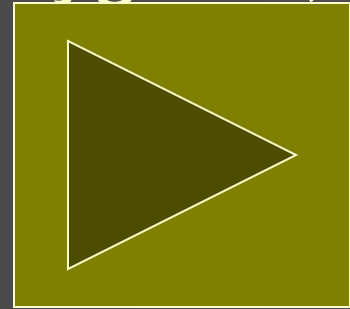


www.siumed.edu



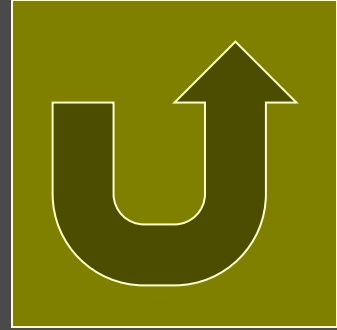
How to build the buildings for health care to prevent legionellosis

- to ensure **properties of the building** for the healthcare (enough space for personnel, hygiene, storage etc.)
- Protection of **hot and cool water**
- Protection of **sewage and solid waste**
- Protection of **heating, air conditioning** etc.



Already when searching for an architect it is recommended to ensure that the architect has basic knowledge of healthcare management

Especially for legionellosis



- The infection highly related with the status of the building is **legionellosis**.
- In many cases an outbreak of legionellosis is a result of **bad project of water pipes, air conditioning** etc.
- In case of water pipes, especially **blind stream branches**, that cannot be washed through and so they might as a reservoir of legionellosis
- Correction is only possible by **rebuilding all the pipe system**