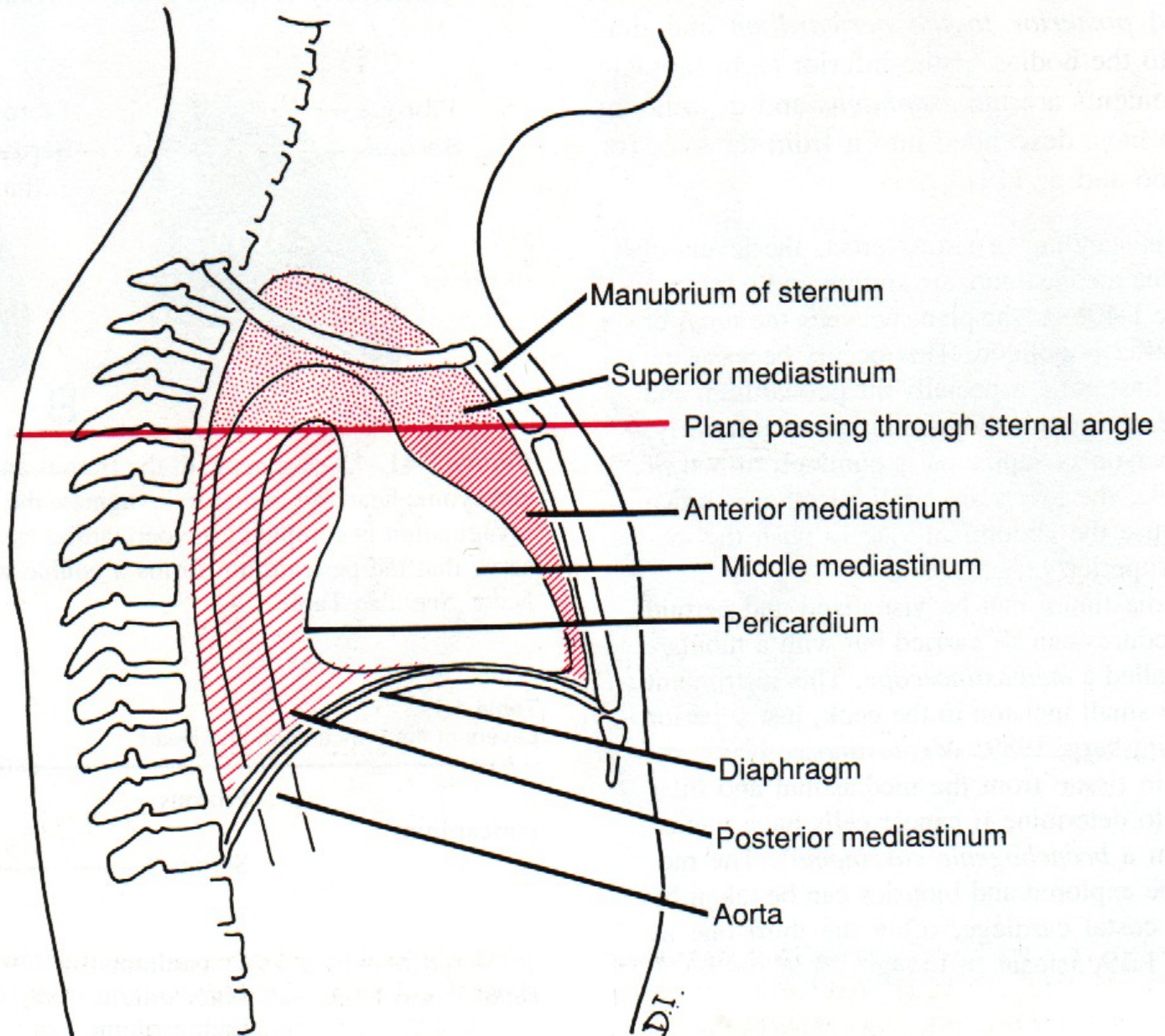
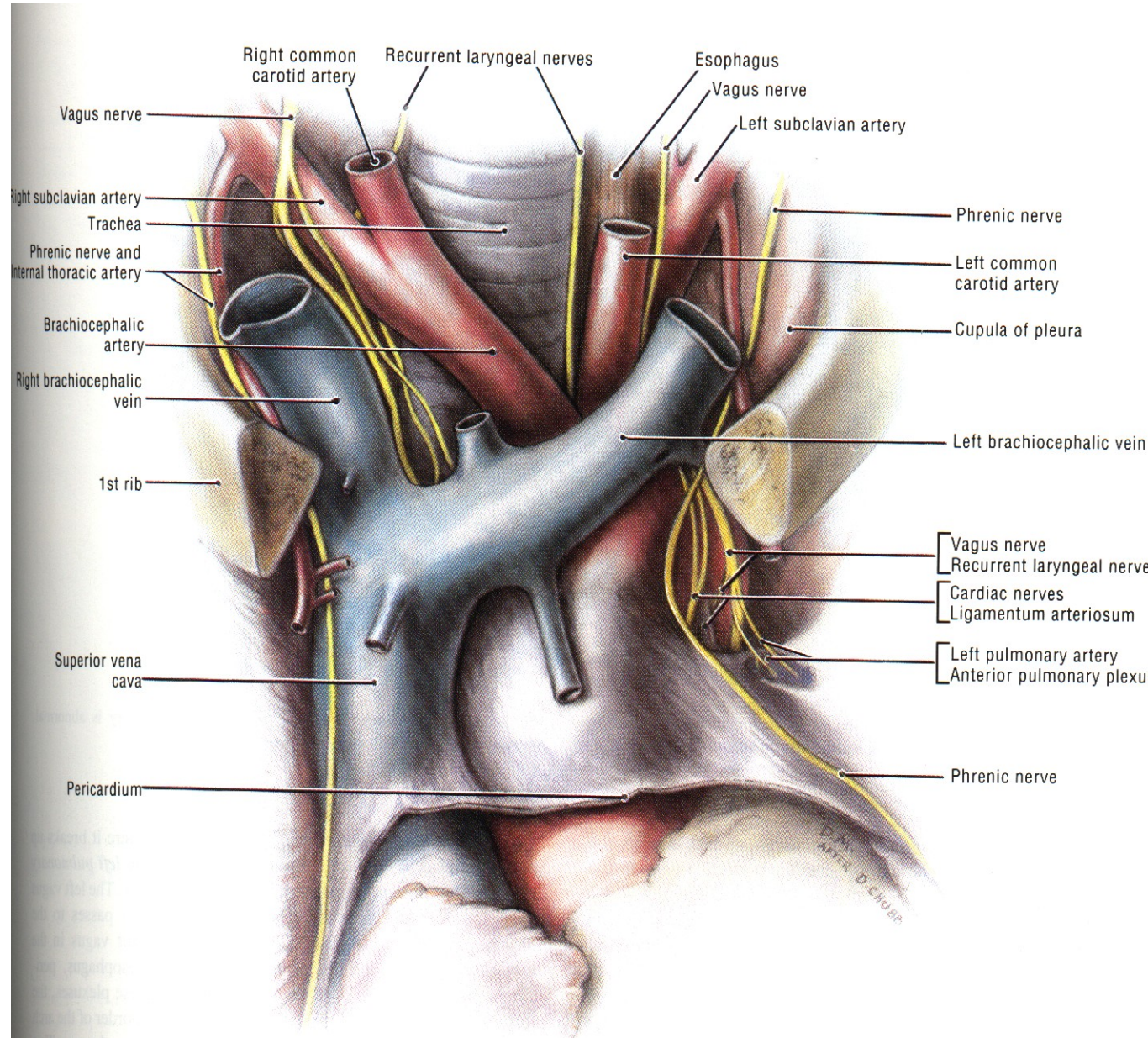


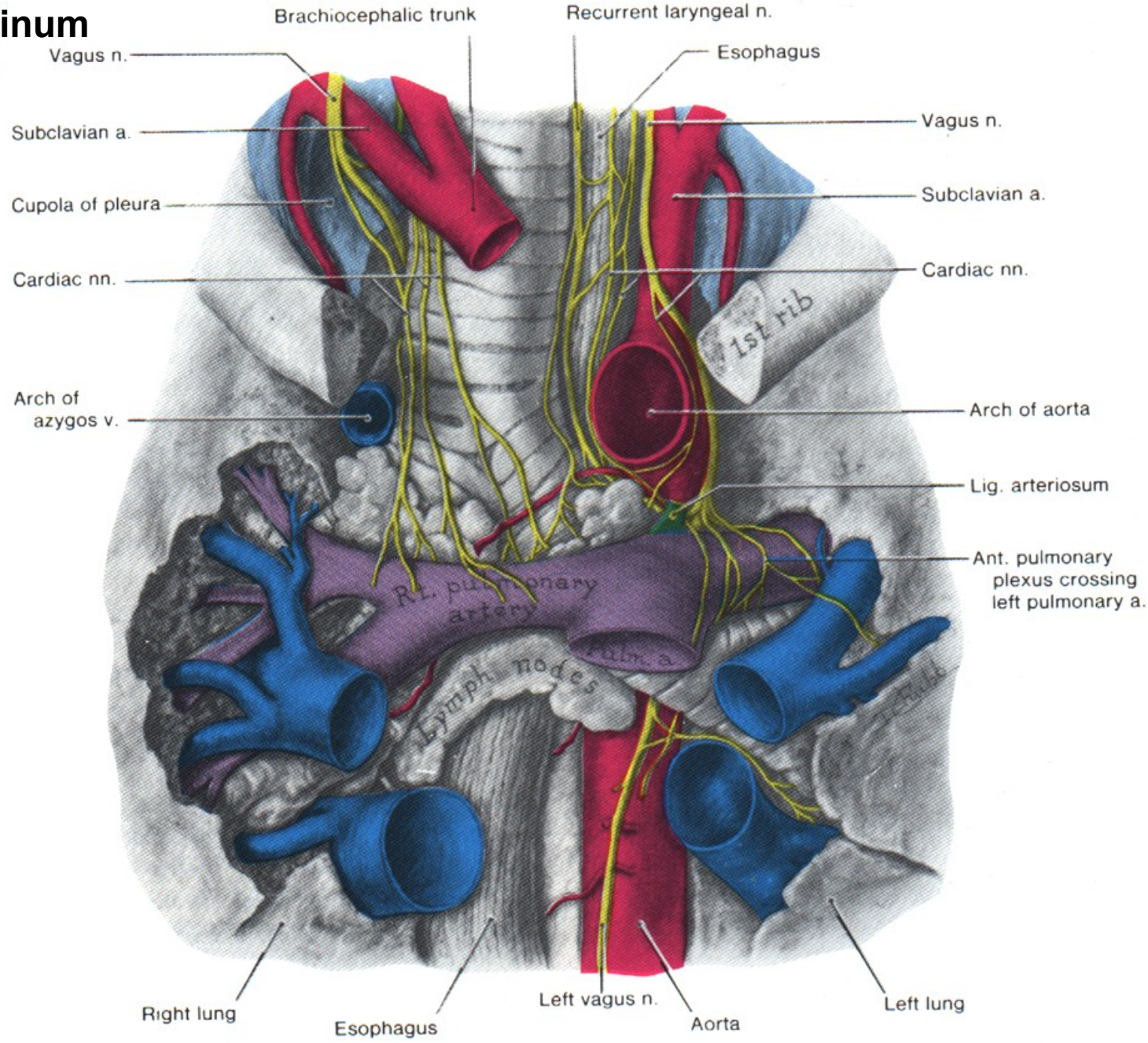
# Mediastinum and its division



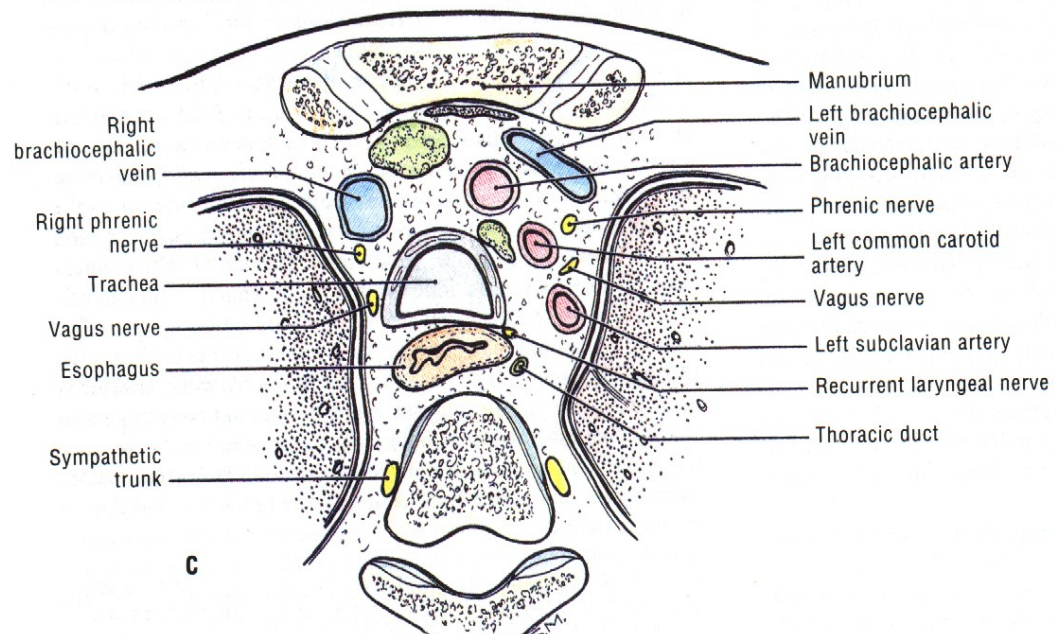
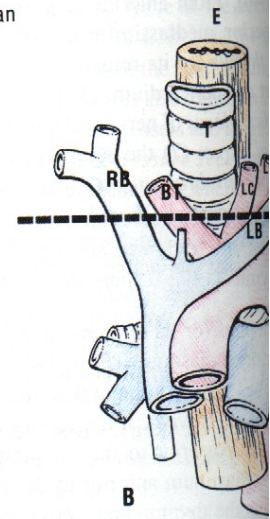
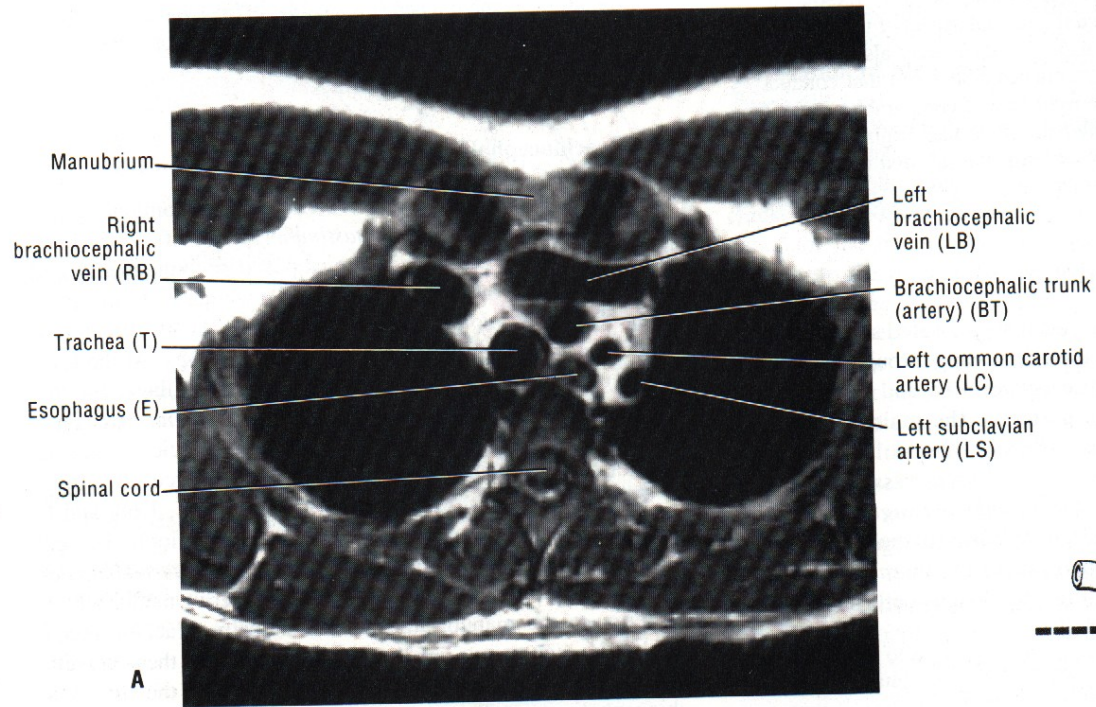
# Superior mediastinum



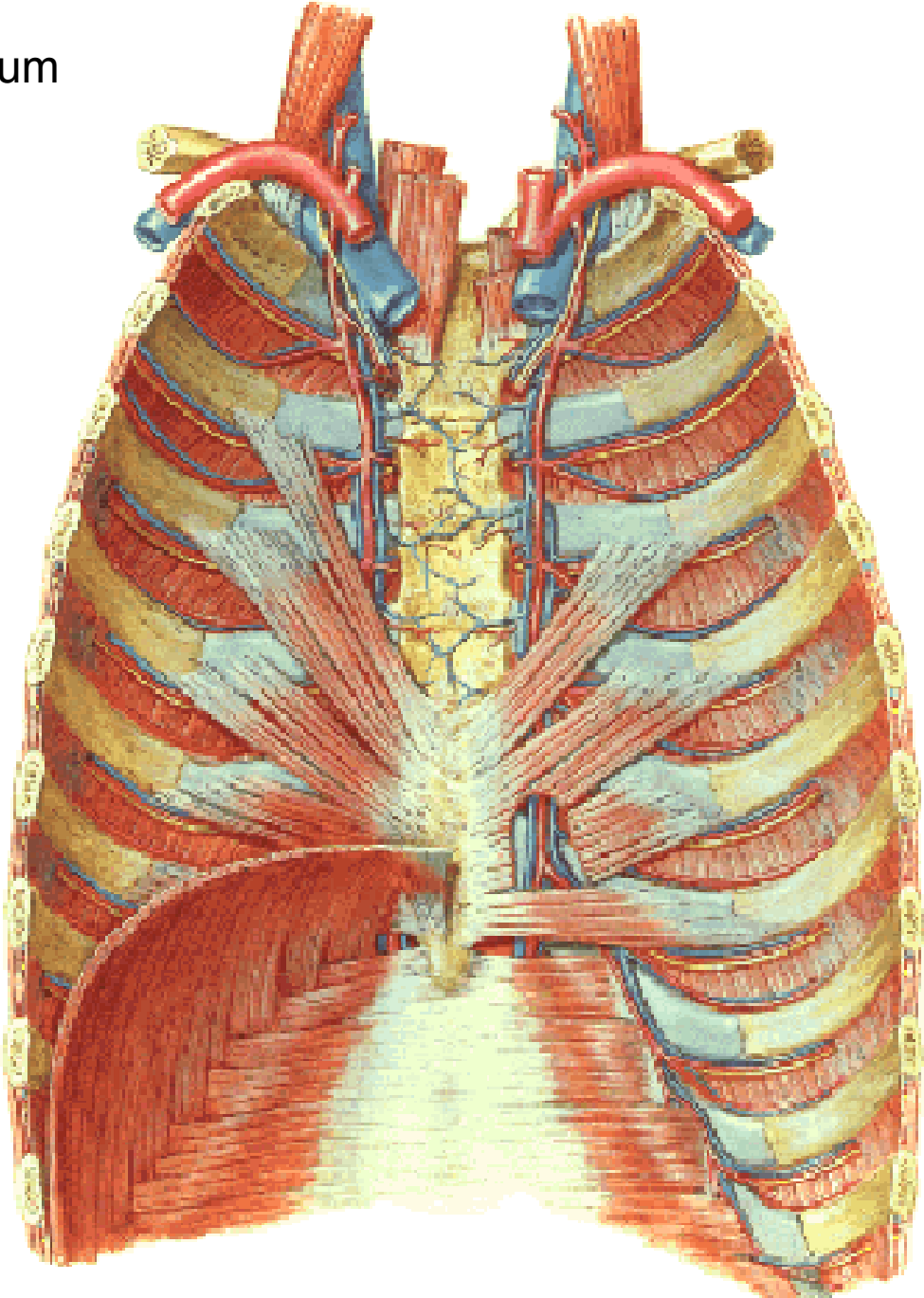
# Superior mediastinum



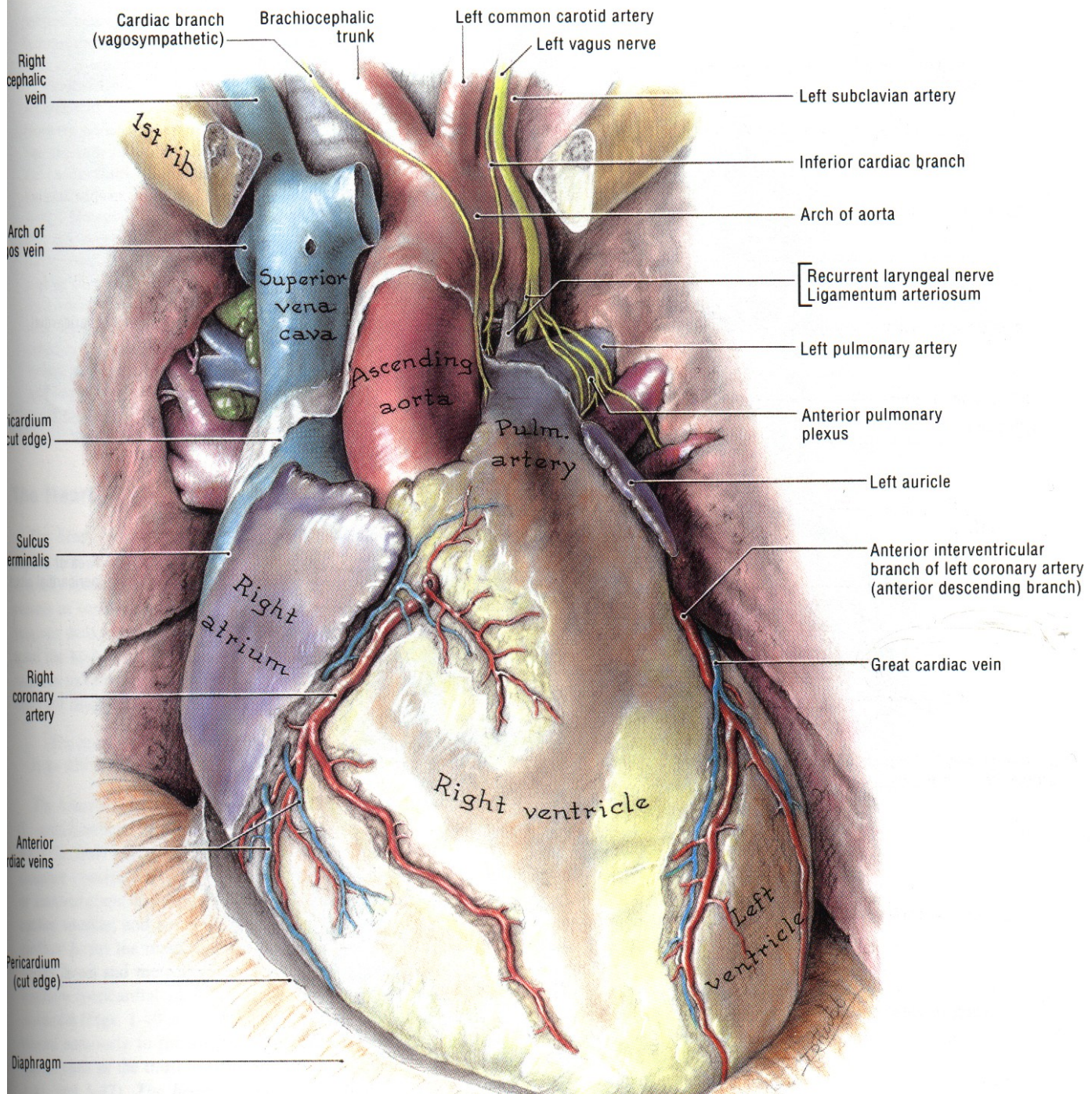
# Superior mediastinum



Anterior Mediastinum



# Middle Mediastinum



Right cephalic vein  
 Arch of aortic vein  
 Superior vena cava  
 Pericardium (cut edge)  
 Sulcus terminalis  
 Right coronary artery  
 Anterior cardiac veins  
 Pericardium (cut edge)  
 Diaphragm

Cardiac branch (vagosympathetic)  
 Brachiocephalic trunk  
 Left common carotid artery  
 Left vagus nerve  
 Ascending aorta  
 Pulm. artery  
 Right atrium  
 Right ventricle  
 Left ventricle

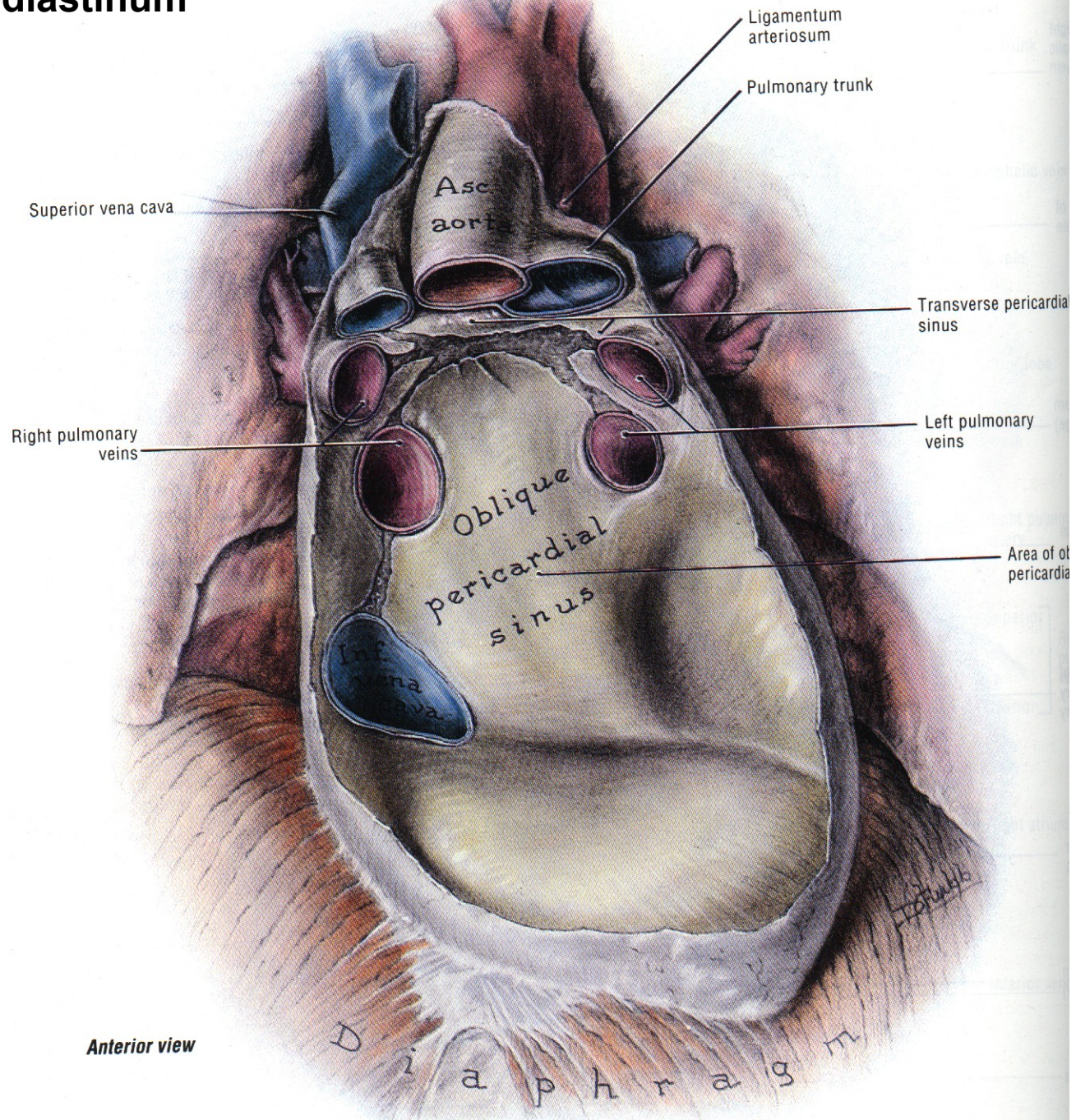
Left subclavian artery  
 Inferior cardiac branch  
 Arch of aorta  
 Recurrent laryngeal nerve  
 Ligamentum arteriosum  
 Left pulmonary artery  
 Anterior pulmonary plexus  
 Left auricle  
 Anterior interventricular branch of left coronary artery (anterior descending branch)  
 Great cardiac vein

1st rib

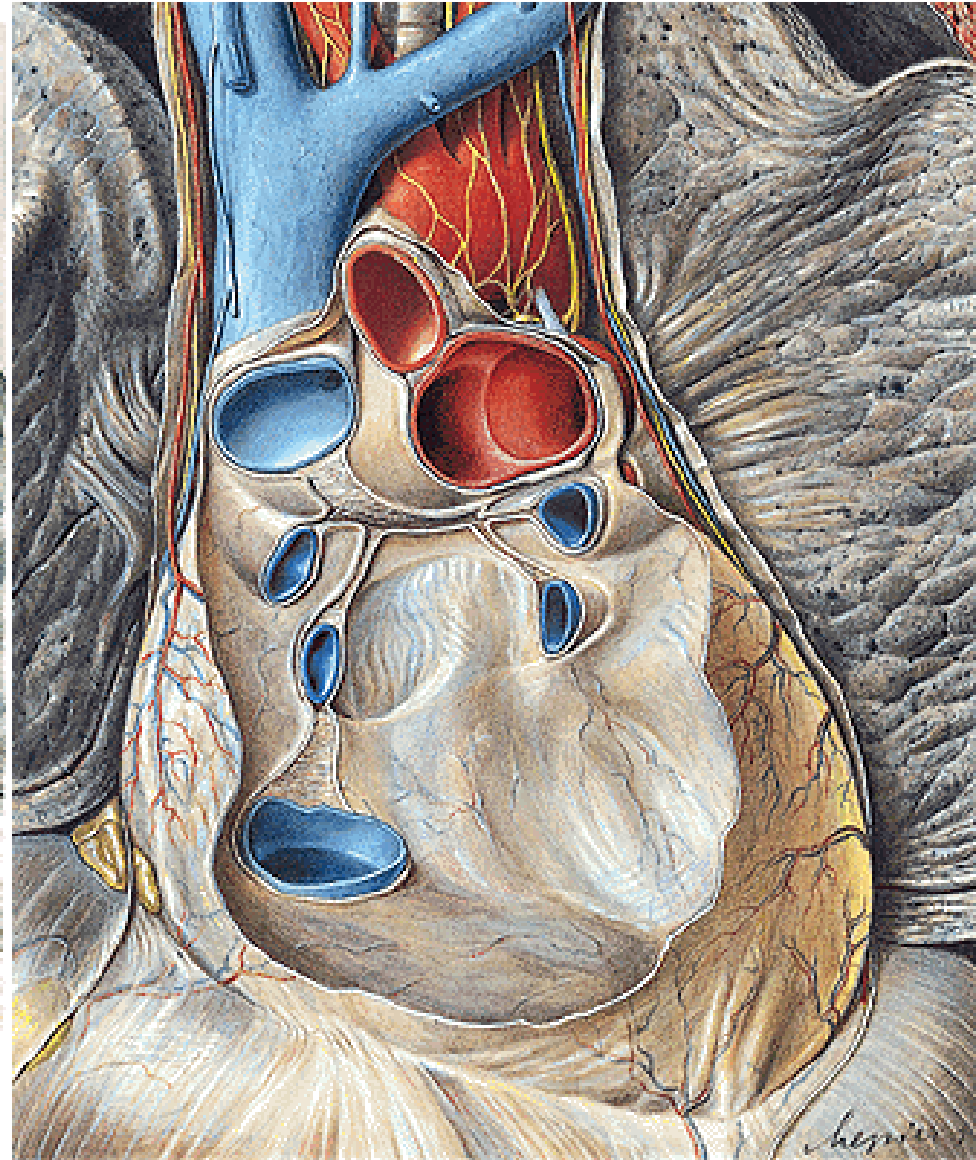
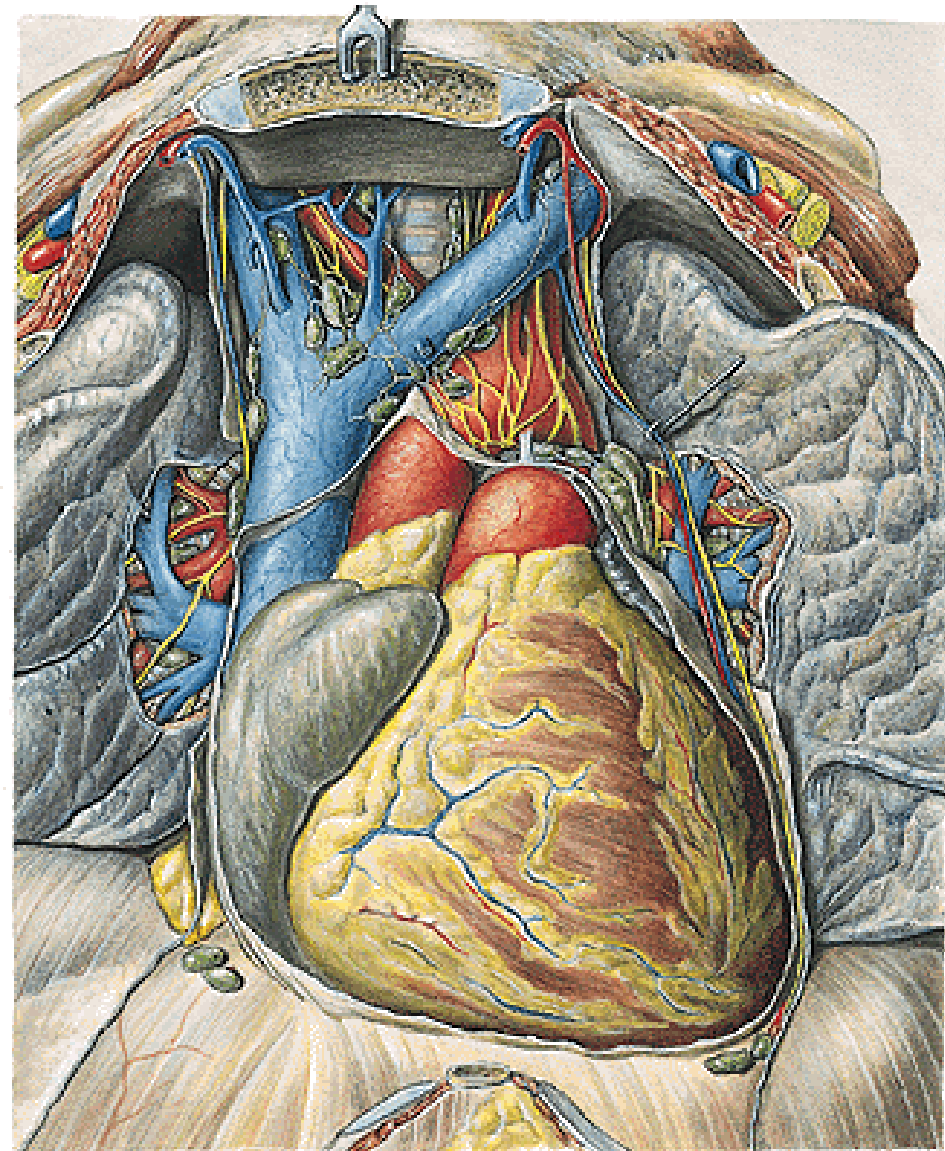
1st rib

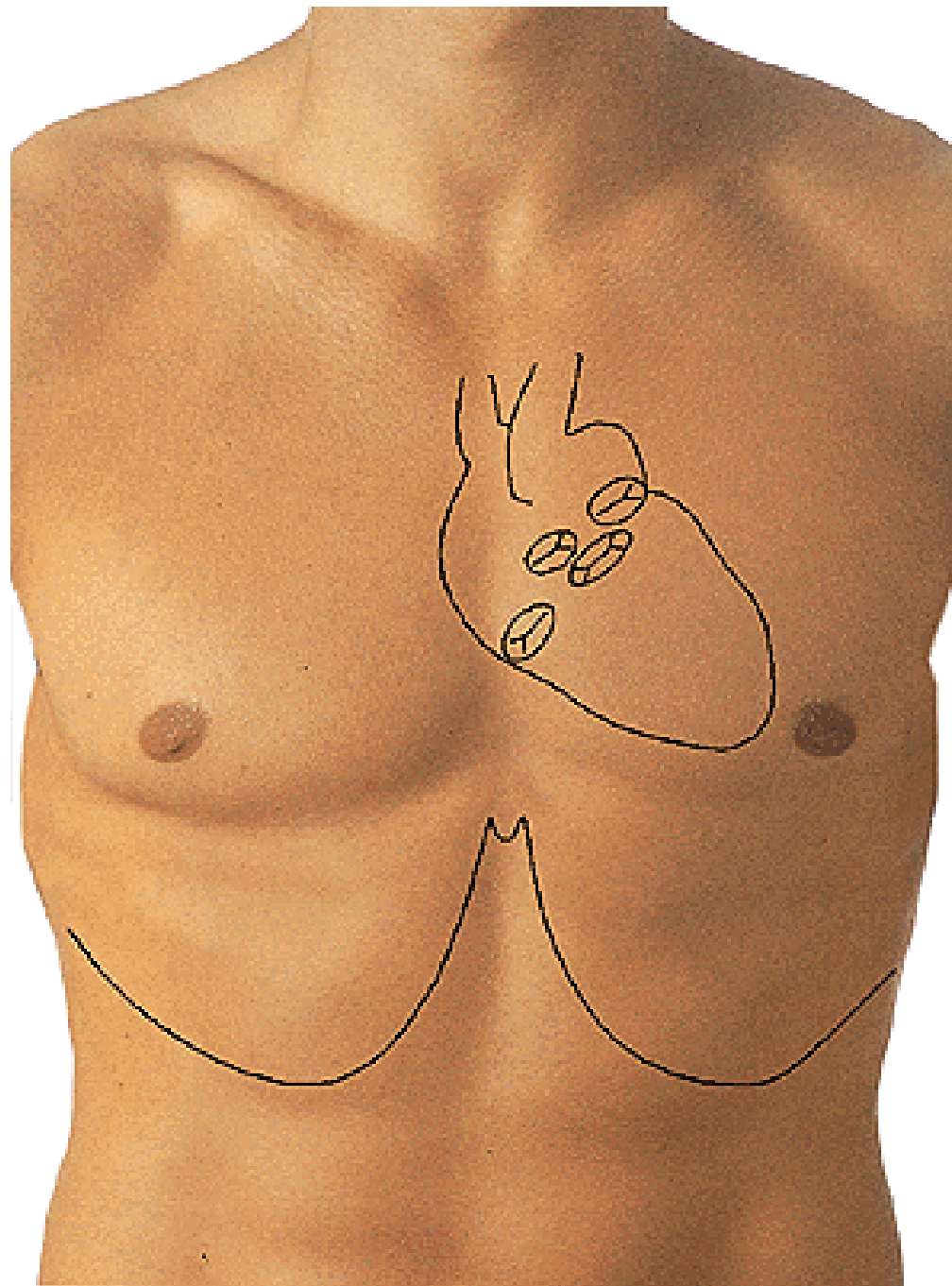


# Middle Mediastinum

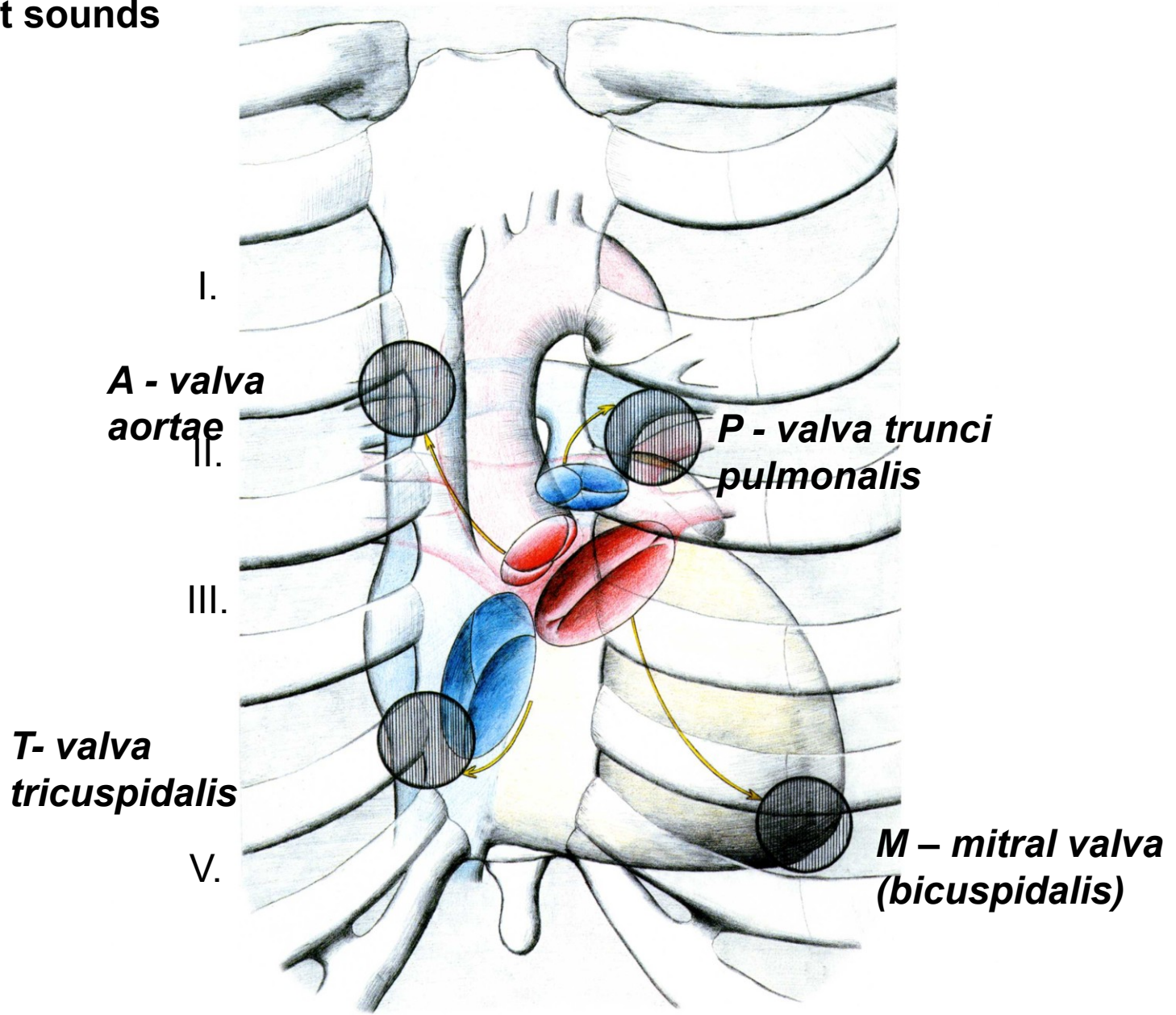


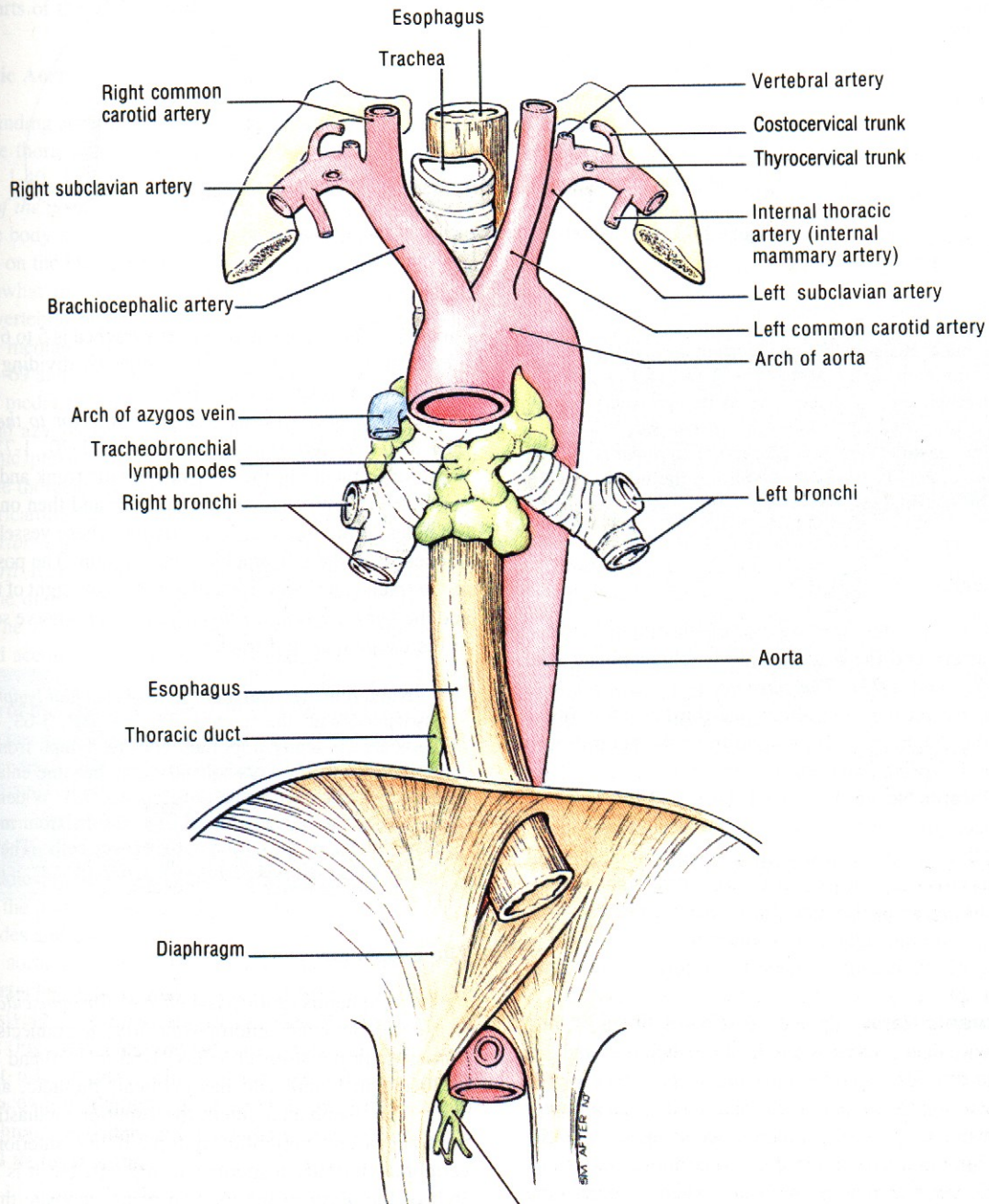
# Middle Mediastinum



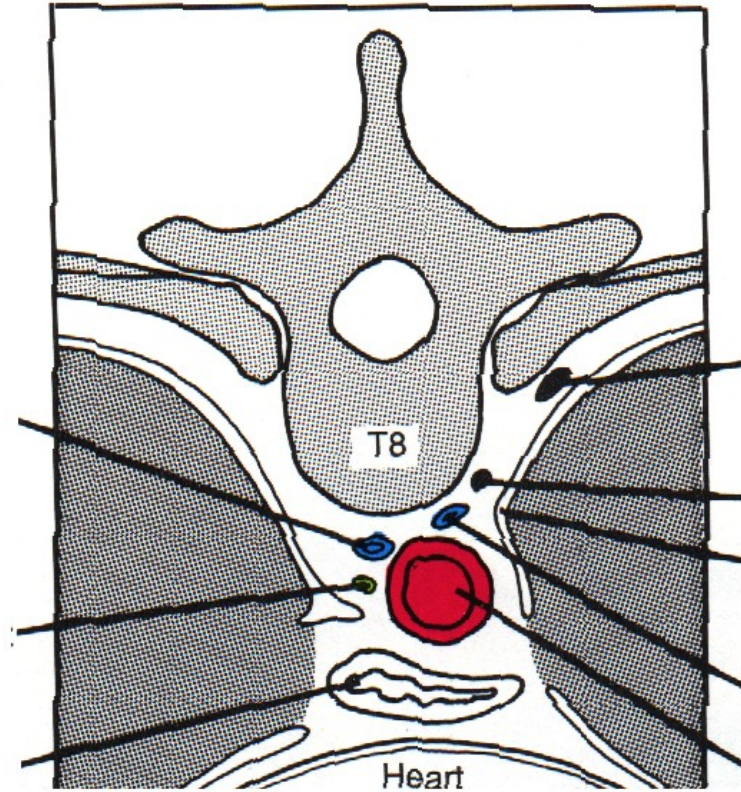


# The heart sounds

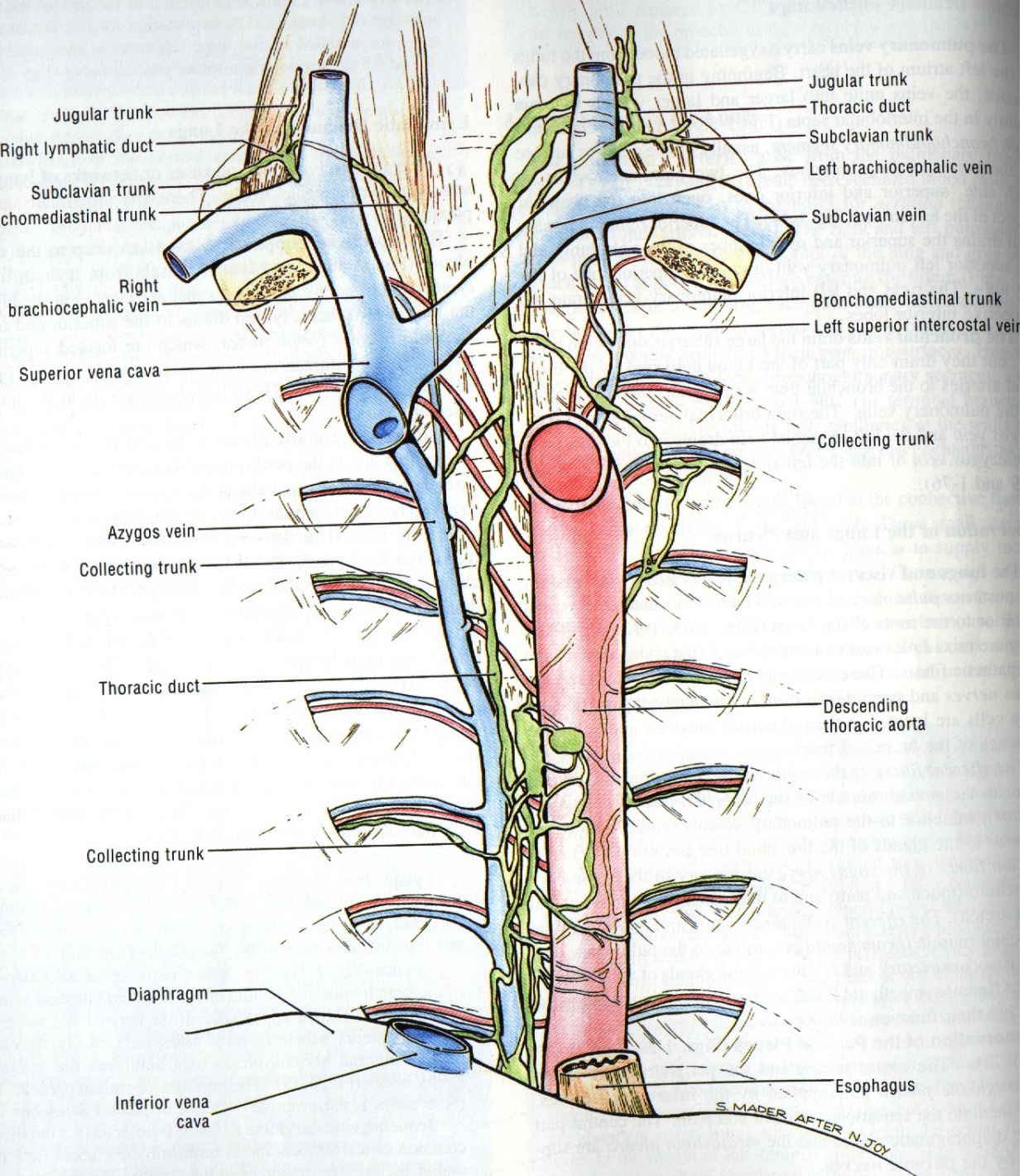




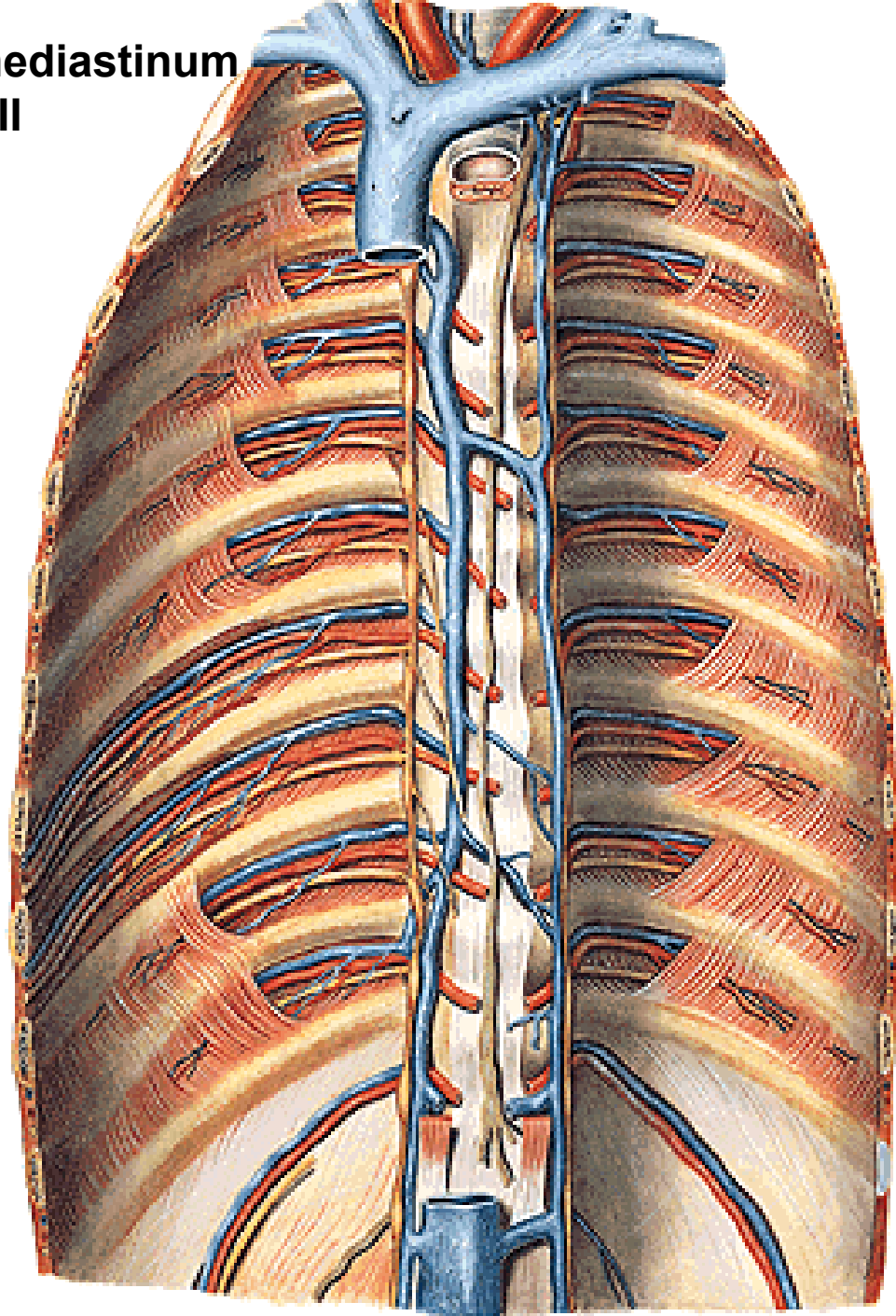
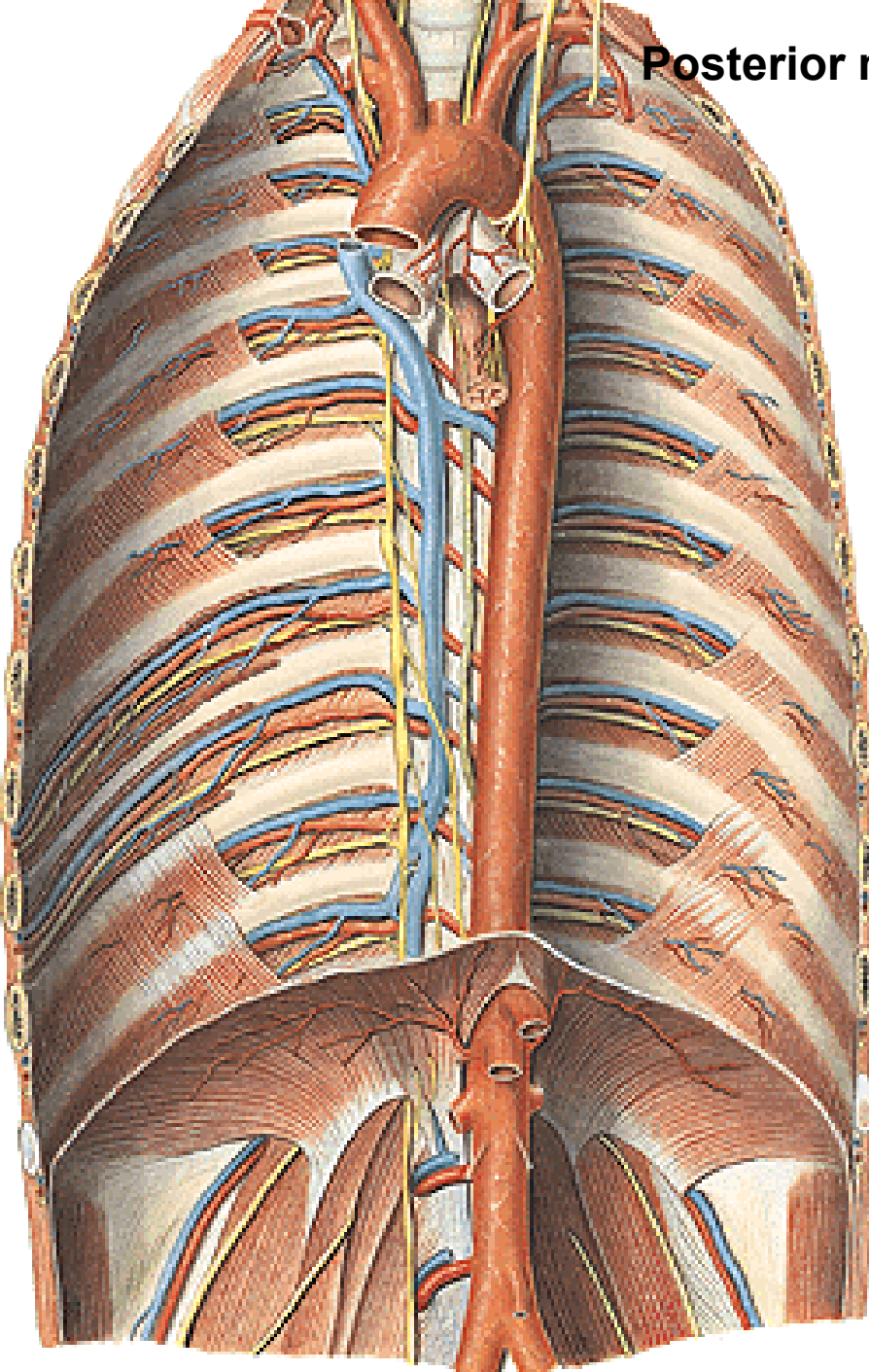
## Posterior mediastinum - I



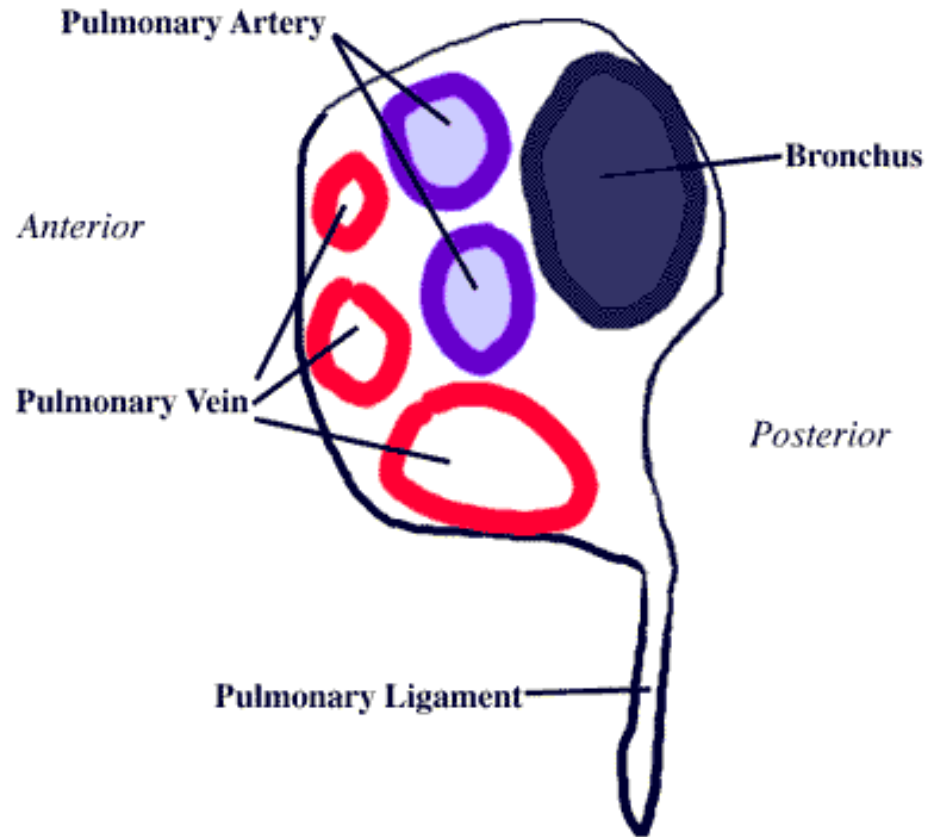
## Posterior mediastinum - II



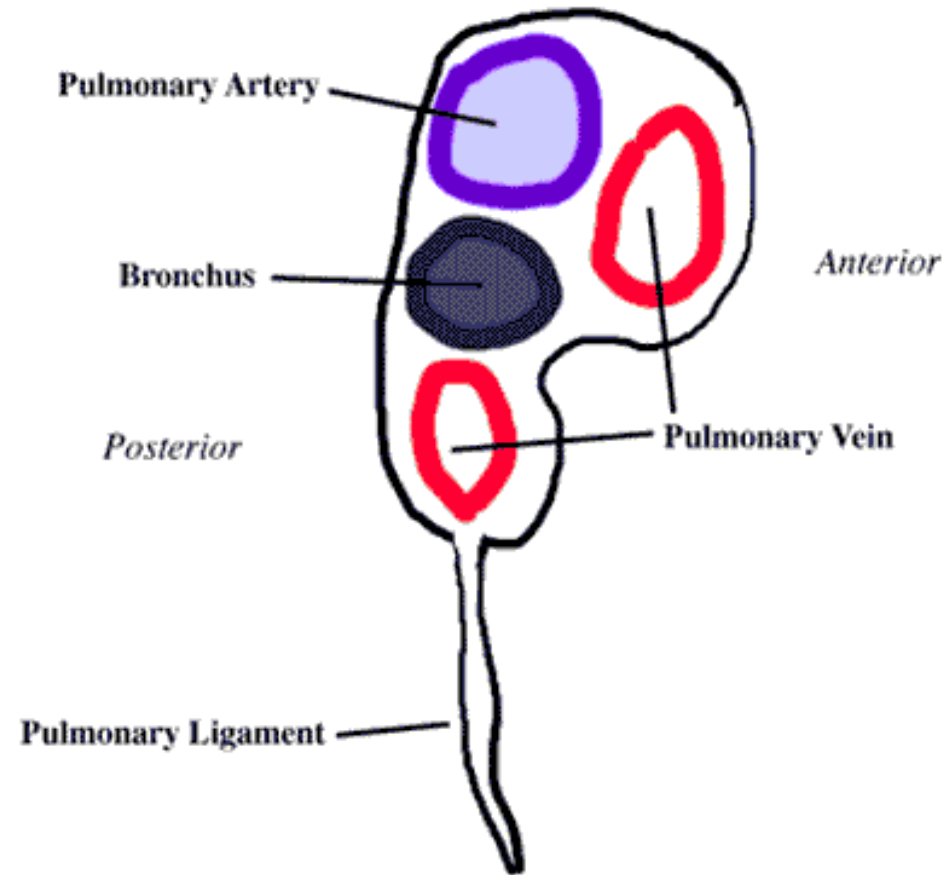
Posterior mediastinum  
III



## Right Lung Hilum

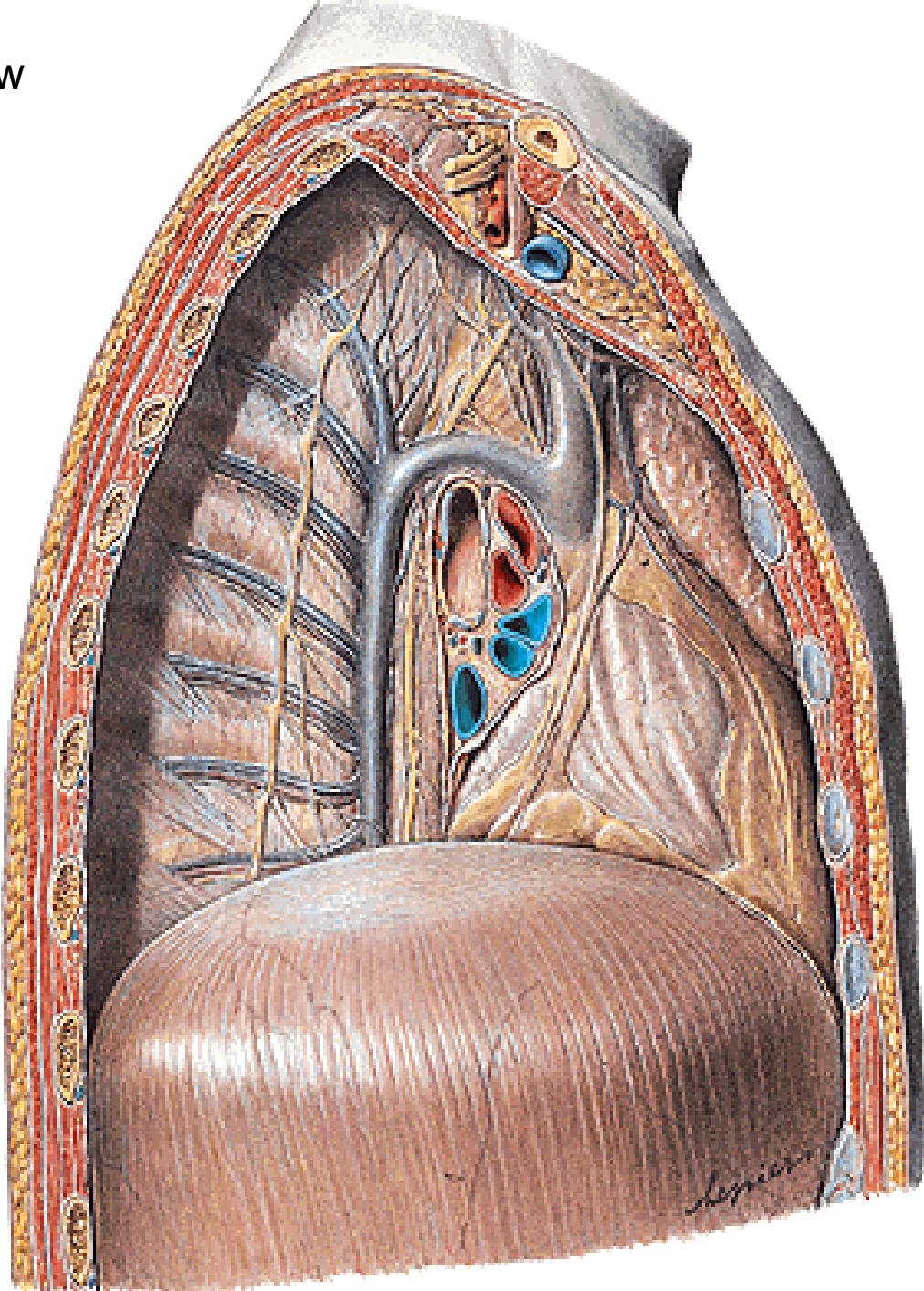


## Left Lung Hilum





Right lateral view



Left lateral view

