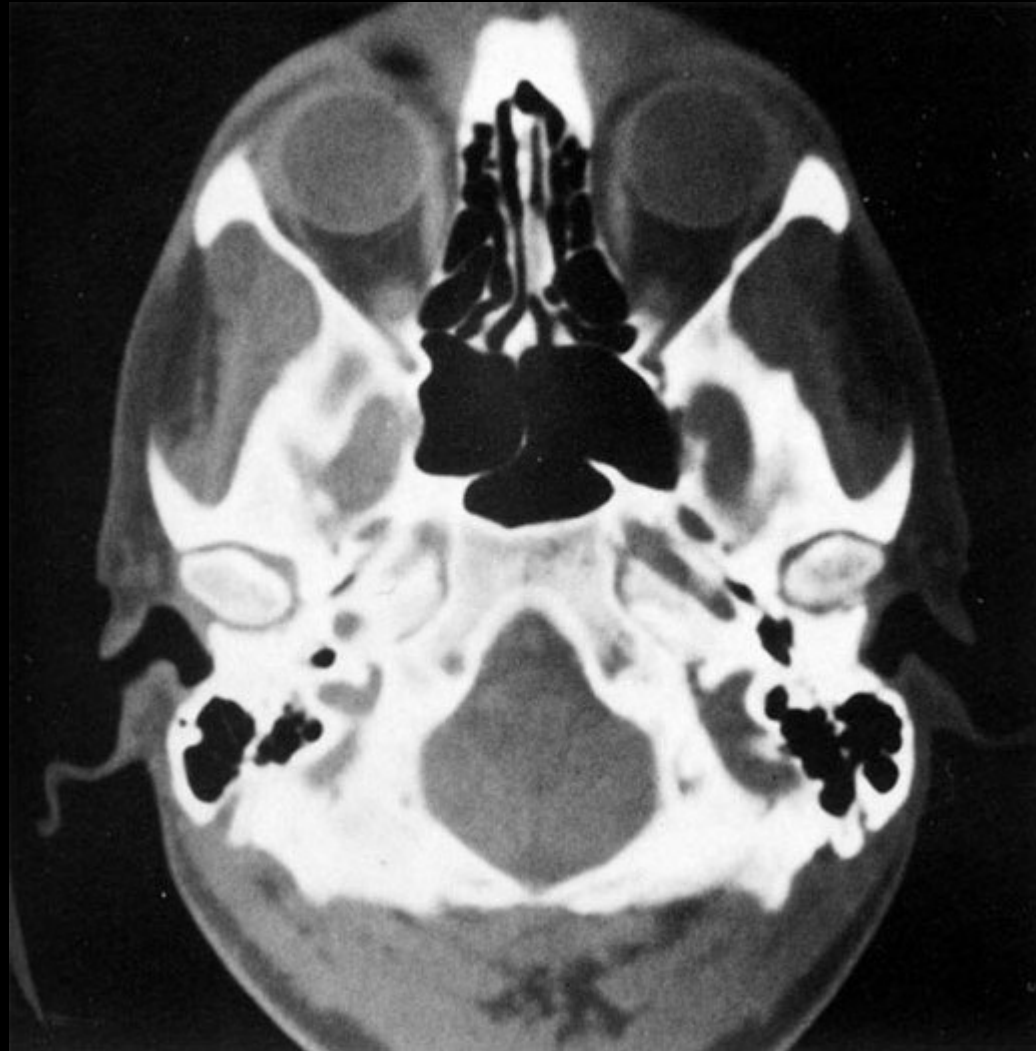
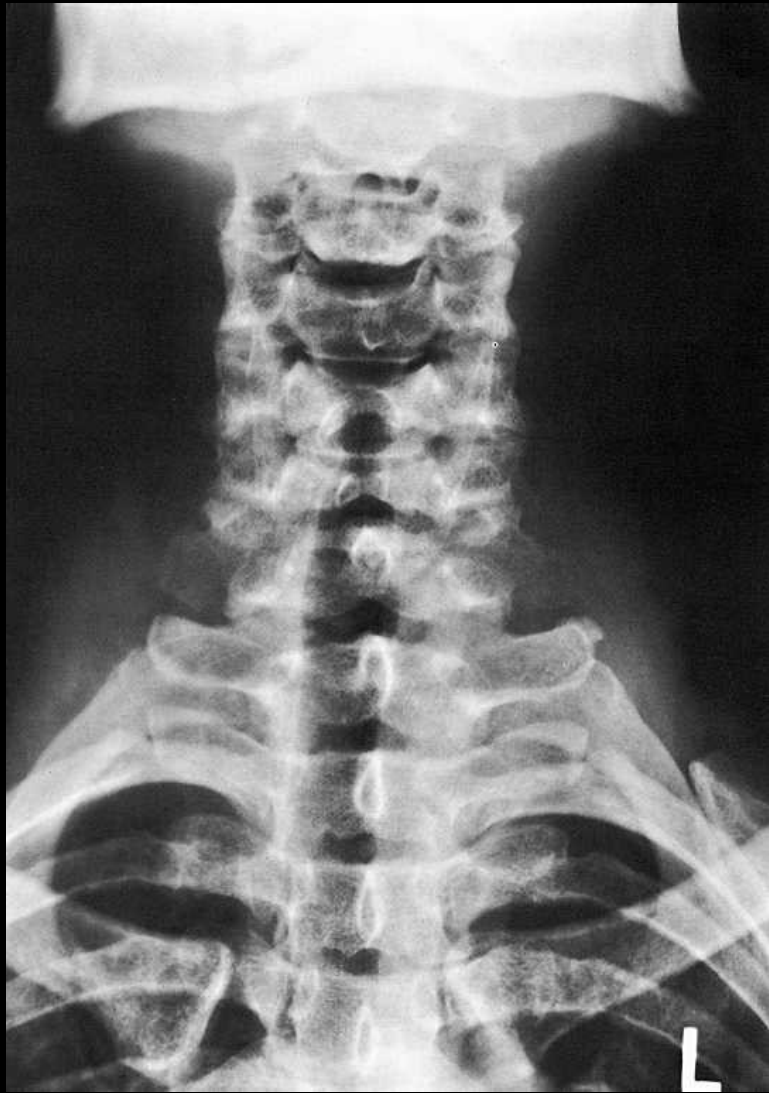


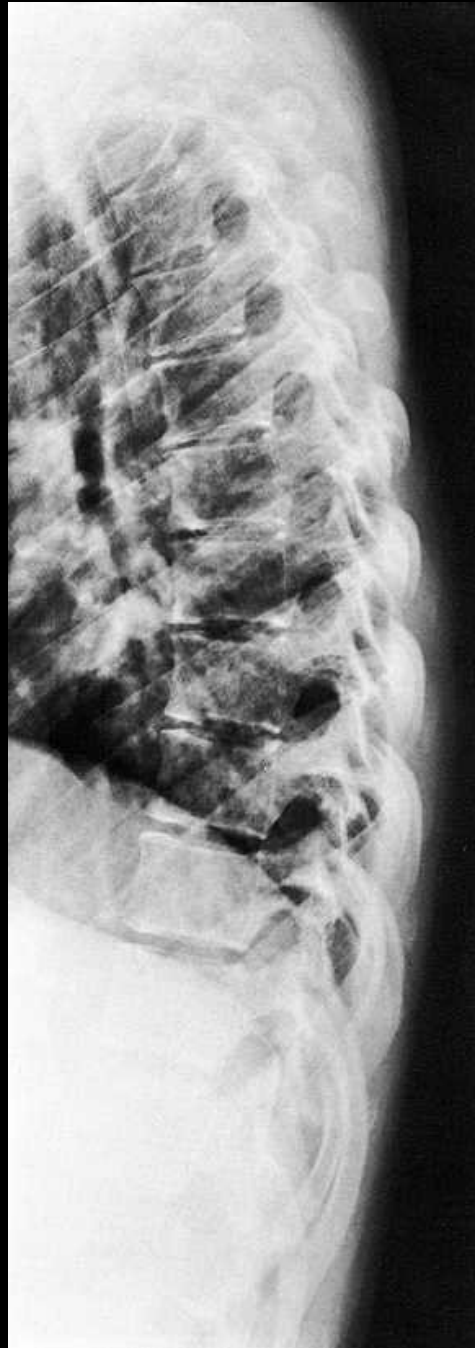
SEMIAXIAL SKULL X-RAY

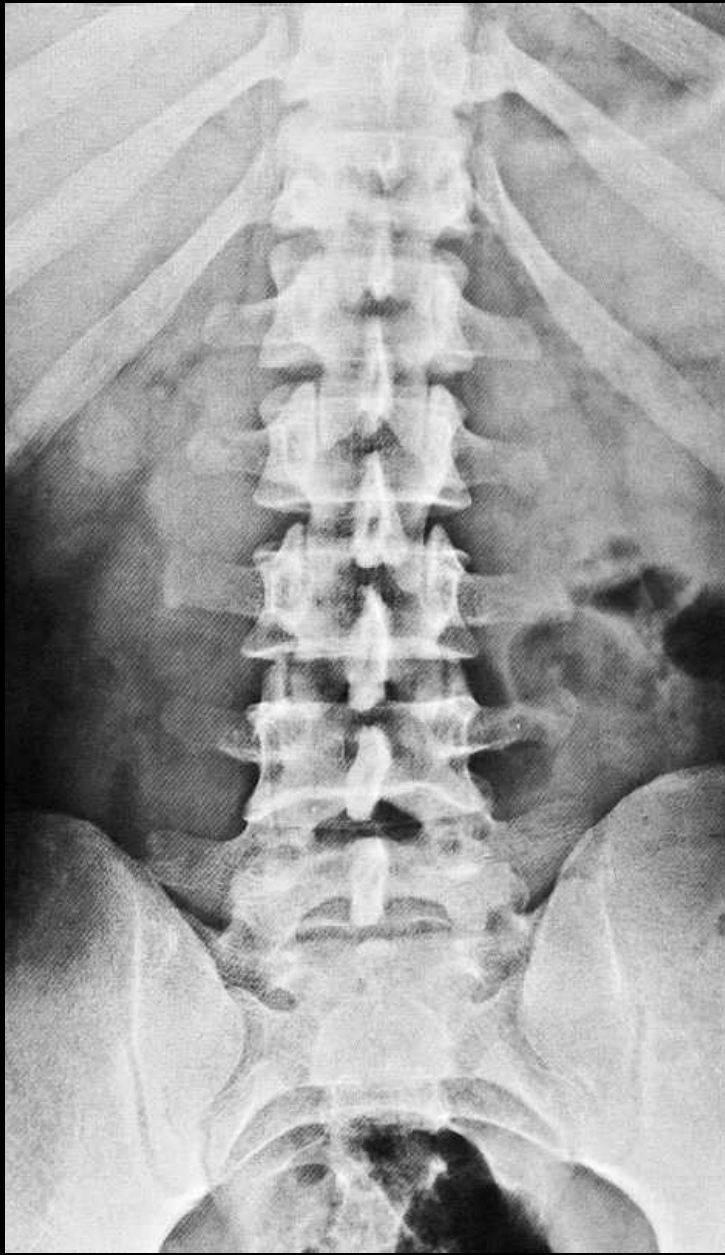


BASE OF SKULL – CT, AXIAL PLANE















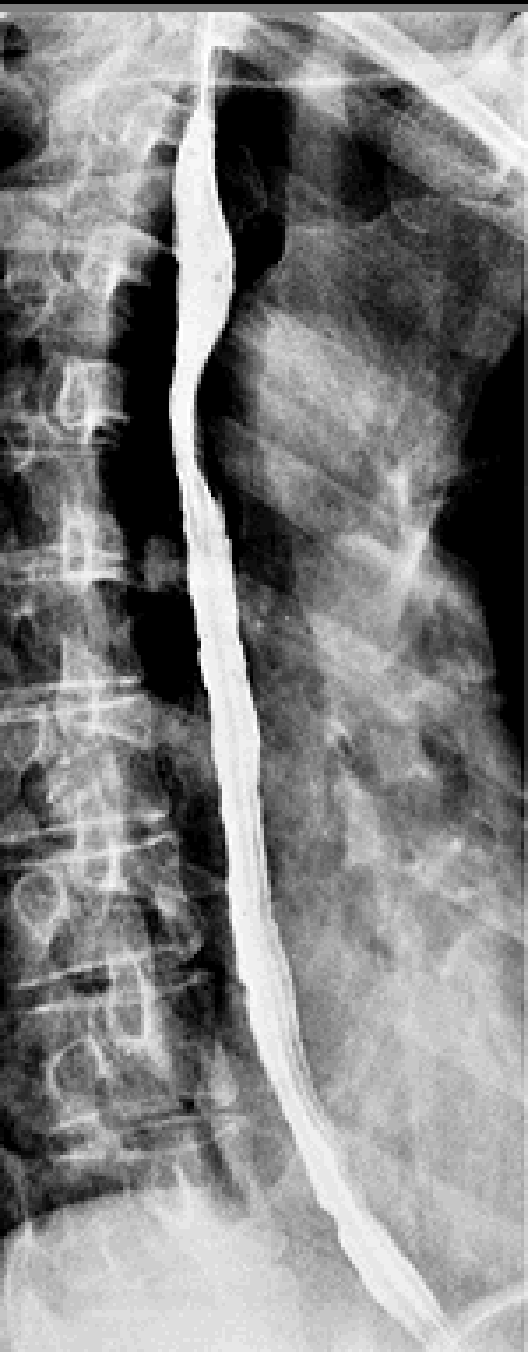




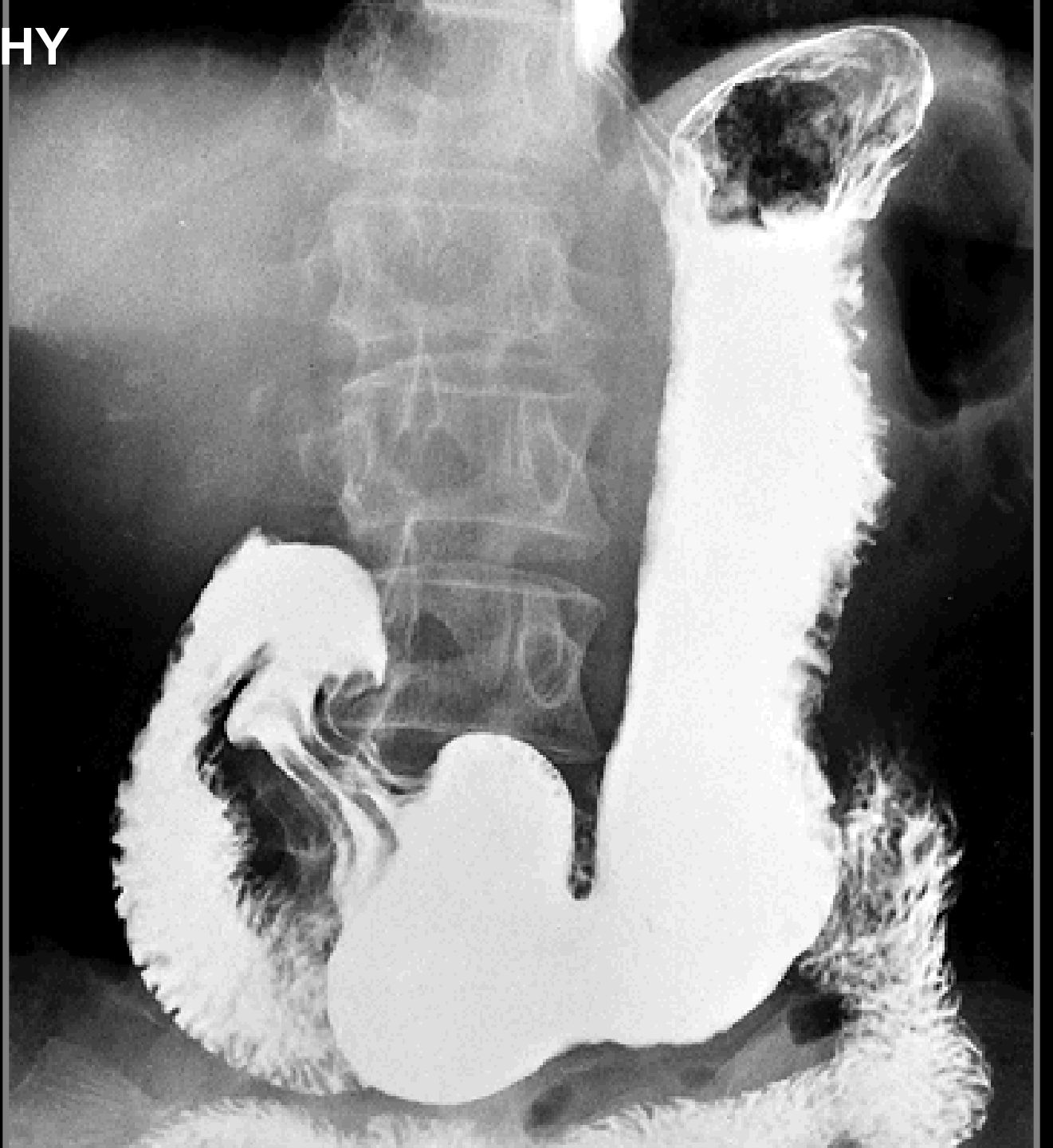




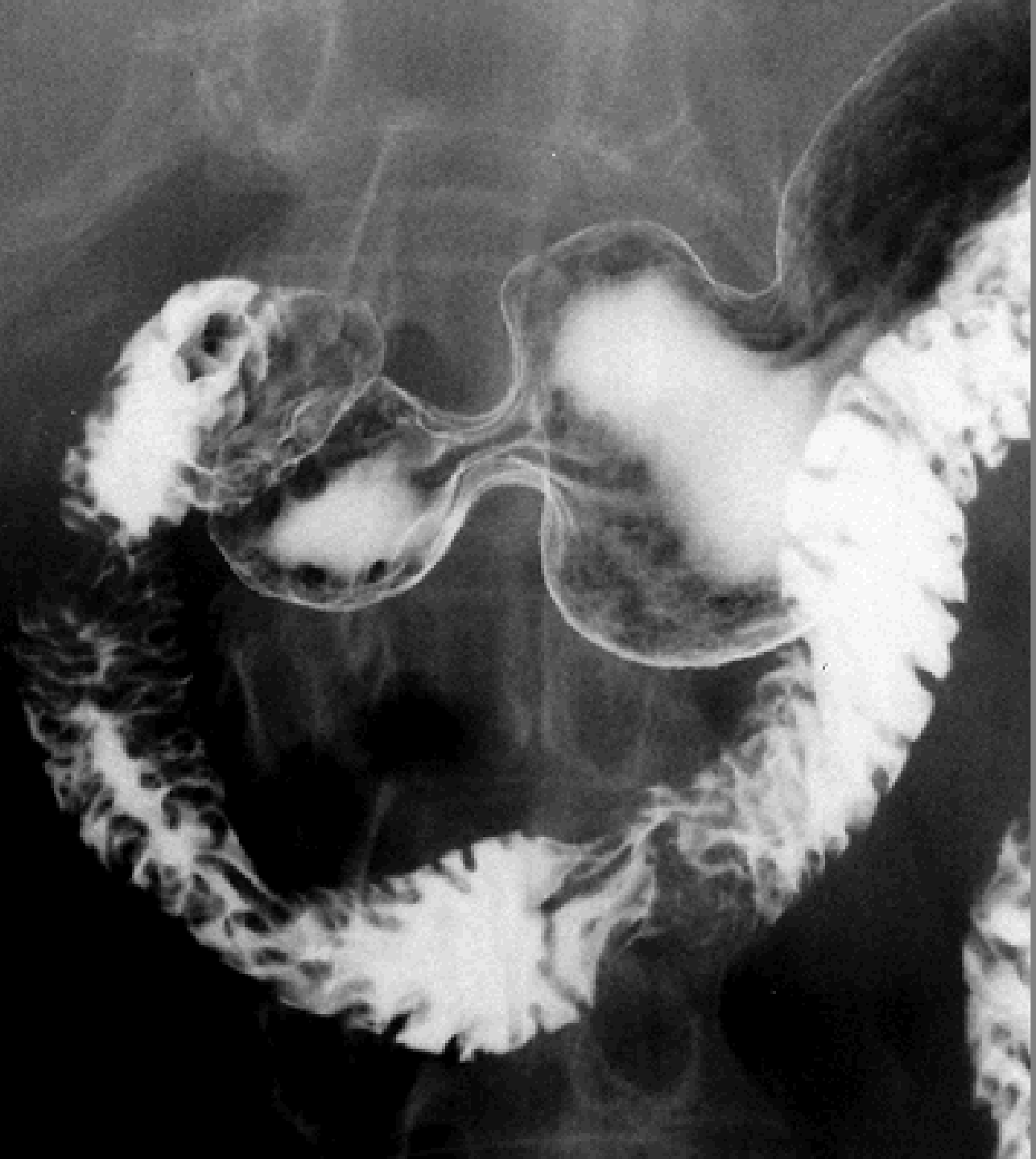
OESOPHAGOGGRAPHY



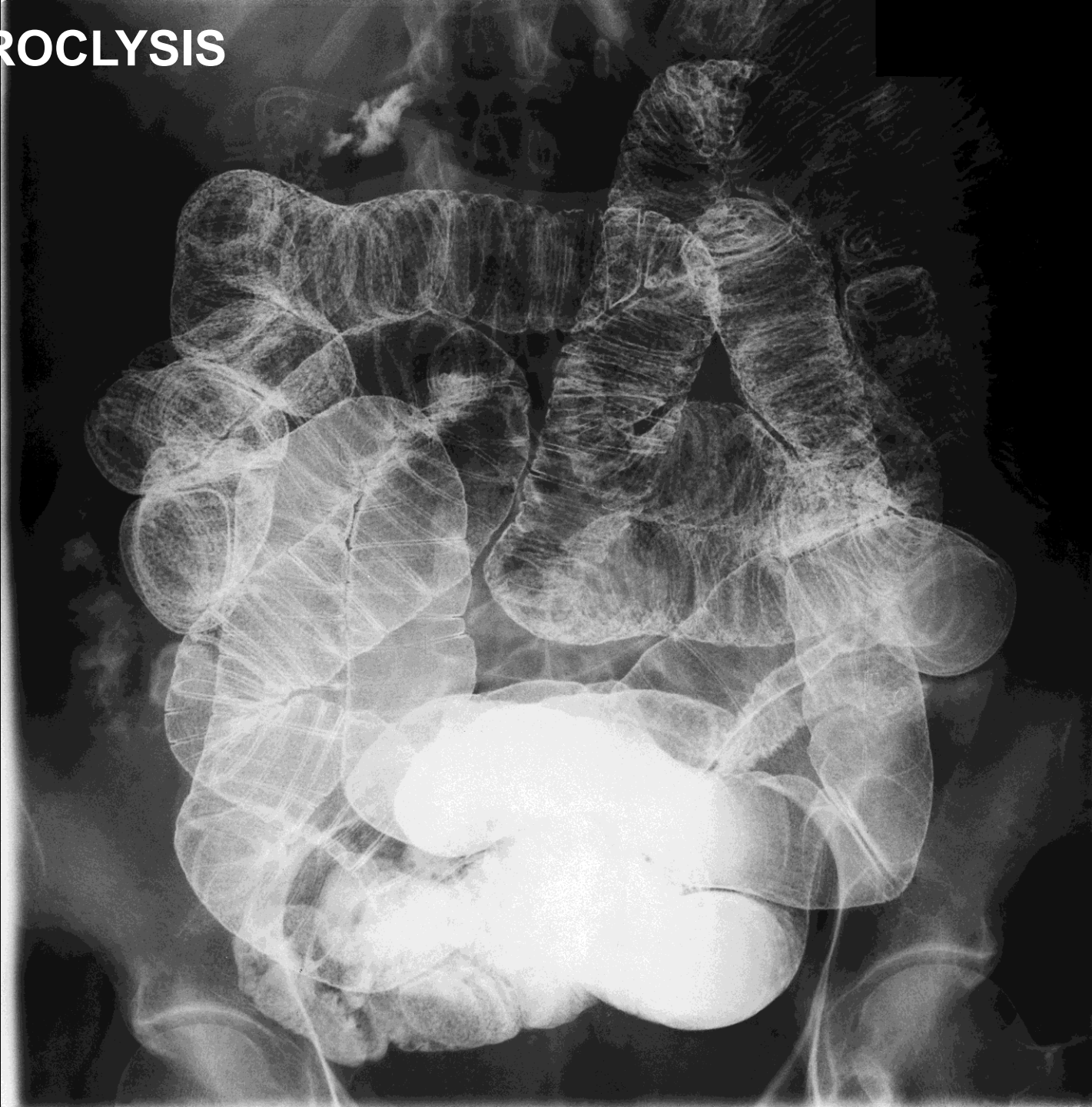
GASTROGRAPHY



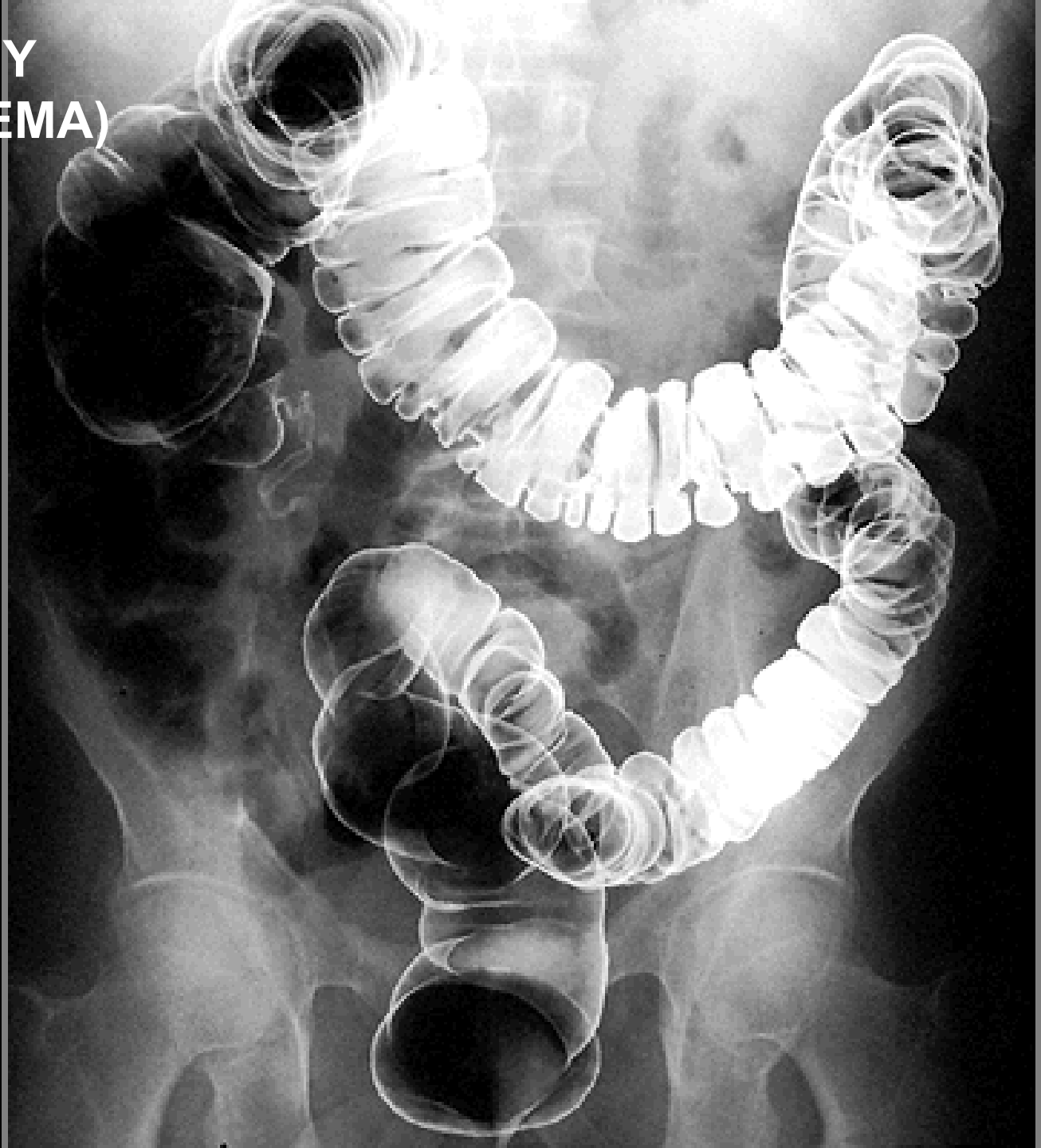




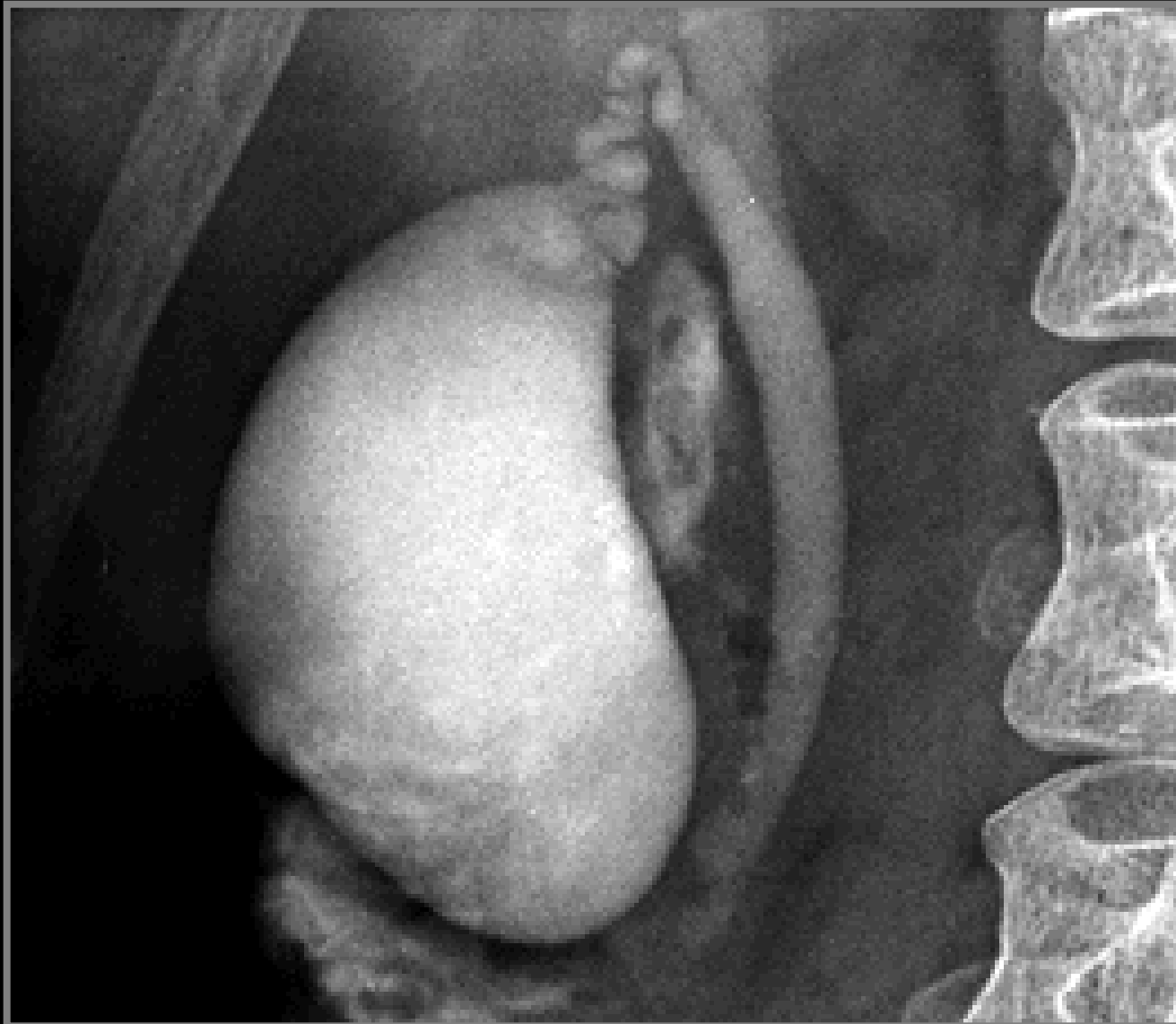
ENTEROCYCLYSIS



IRIGOGRAPHY (BARIUM ENEMA)

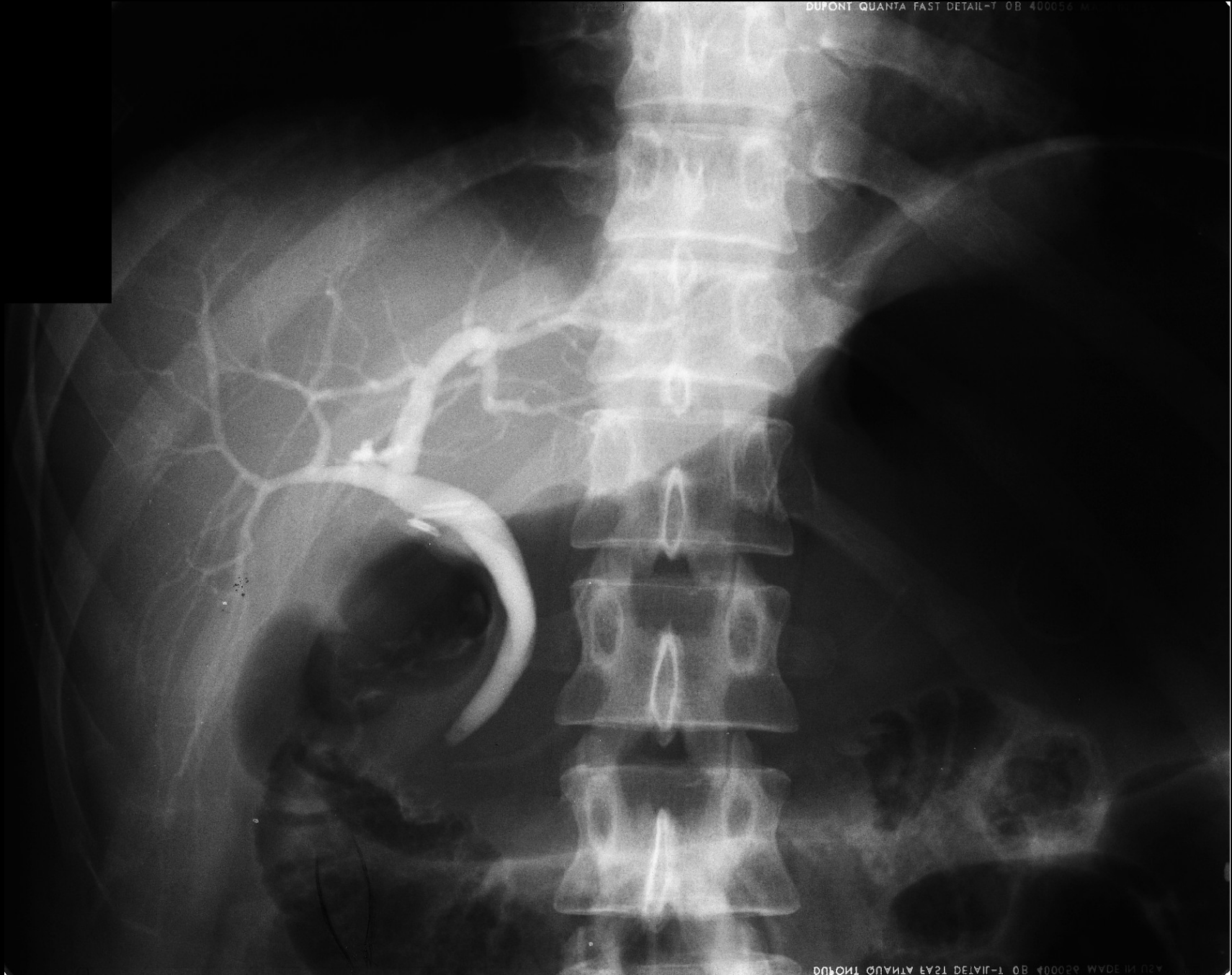


CHOLECYSTOGRAPHY

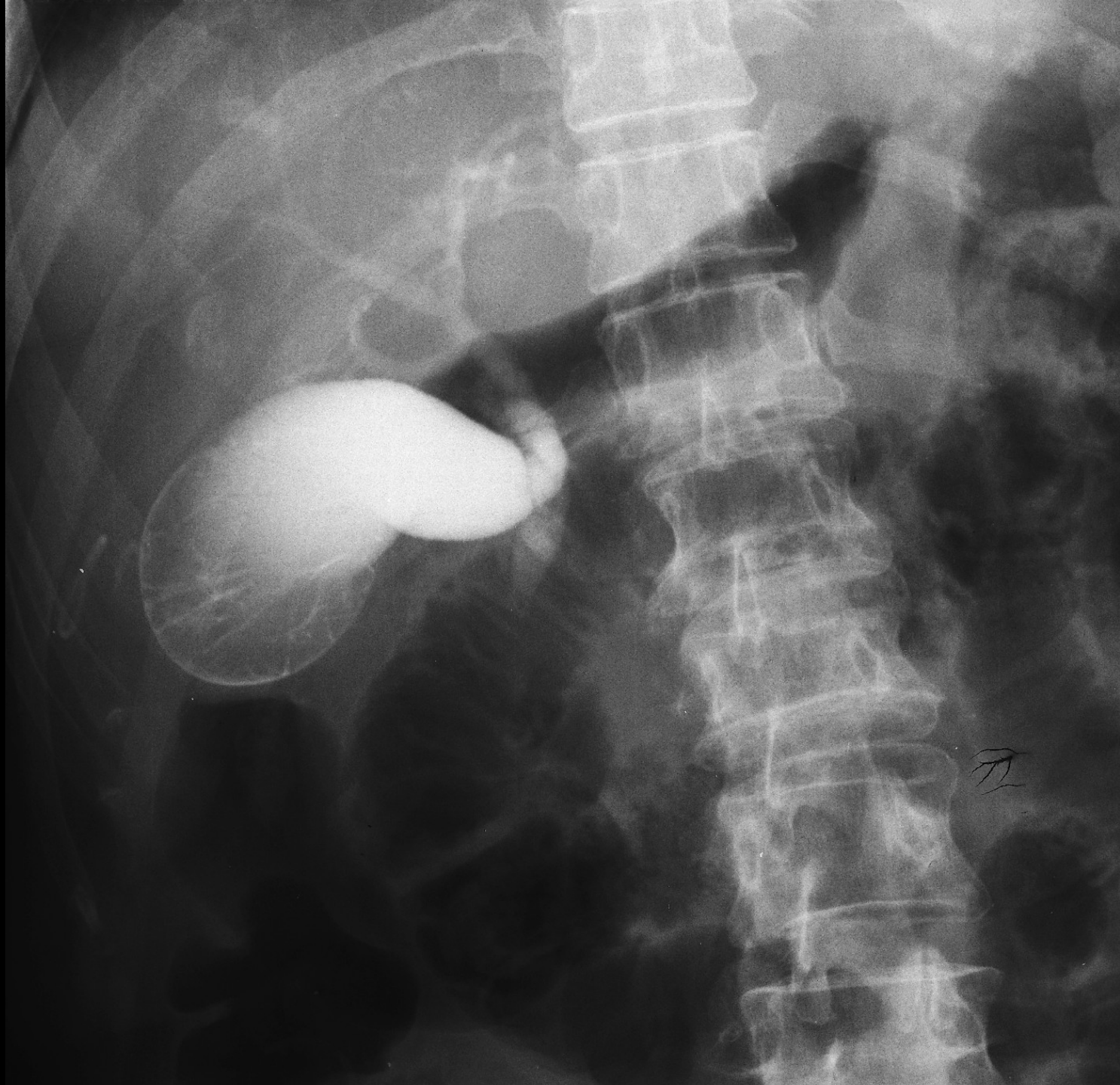


CHOLANGIOGRAPHY

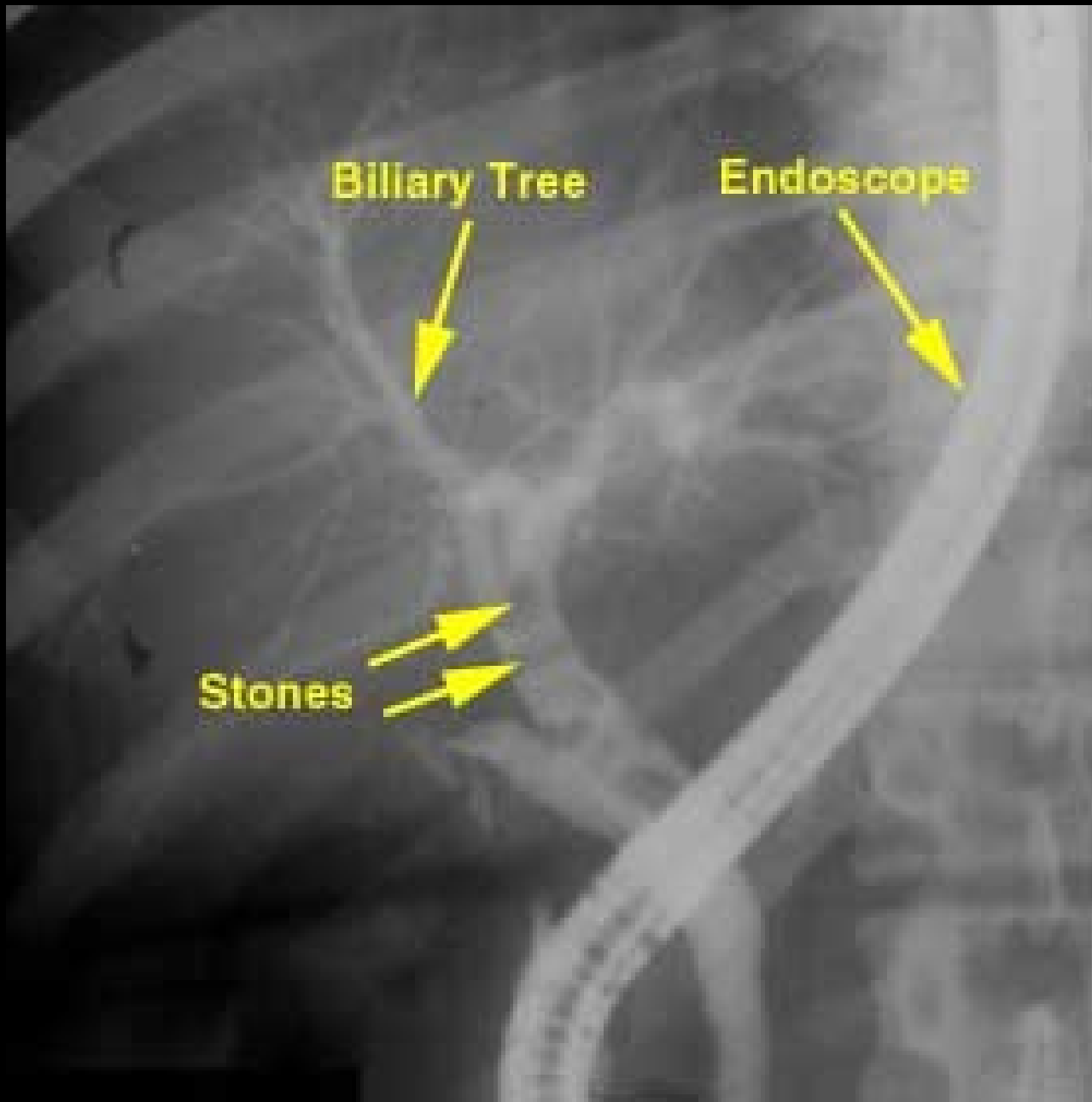
DUPONT QUANTA FAST DETAIL-T 0B 400056



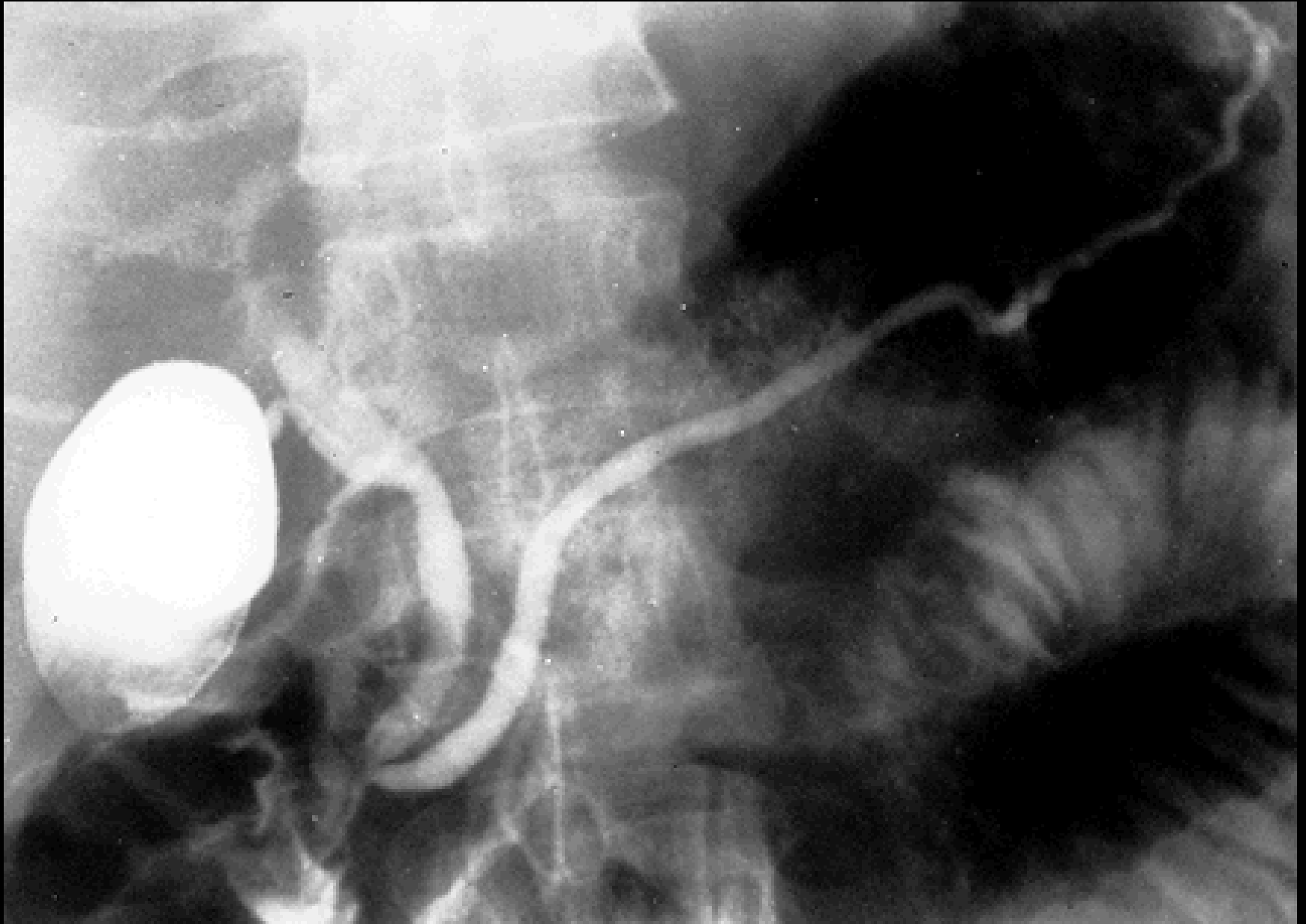
DUPONT QUANTA FAST DETAIL-T 0B 400056



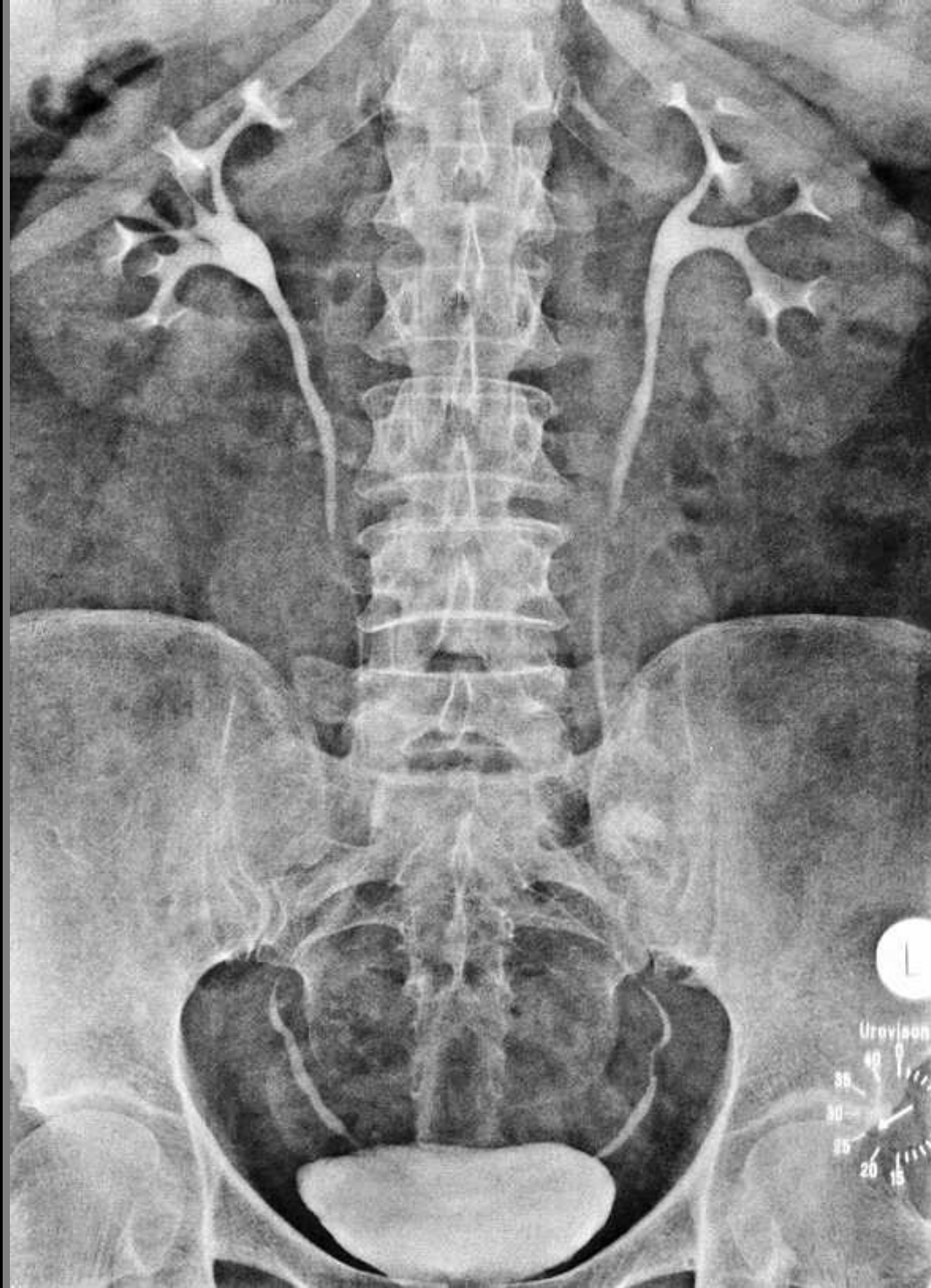
ENDOSCOPIC RETROGRADE CHOLEDOCHOGRAPHY



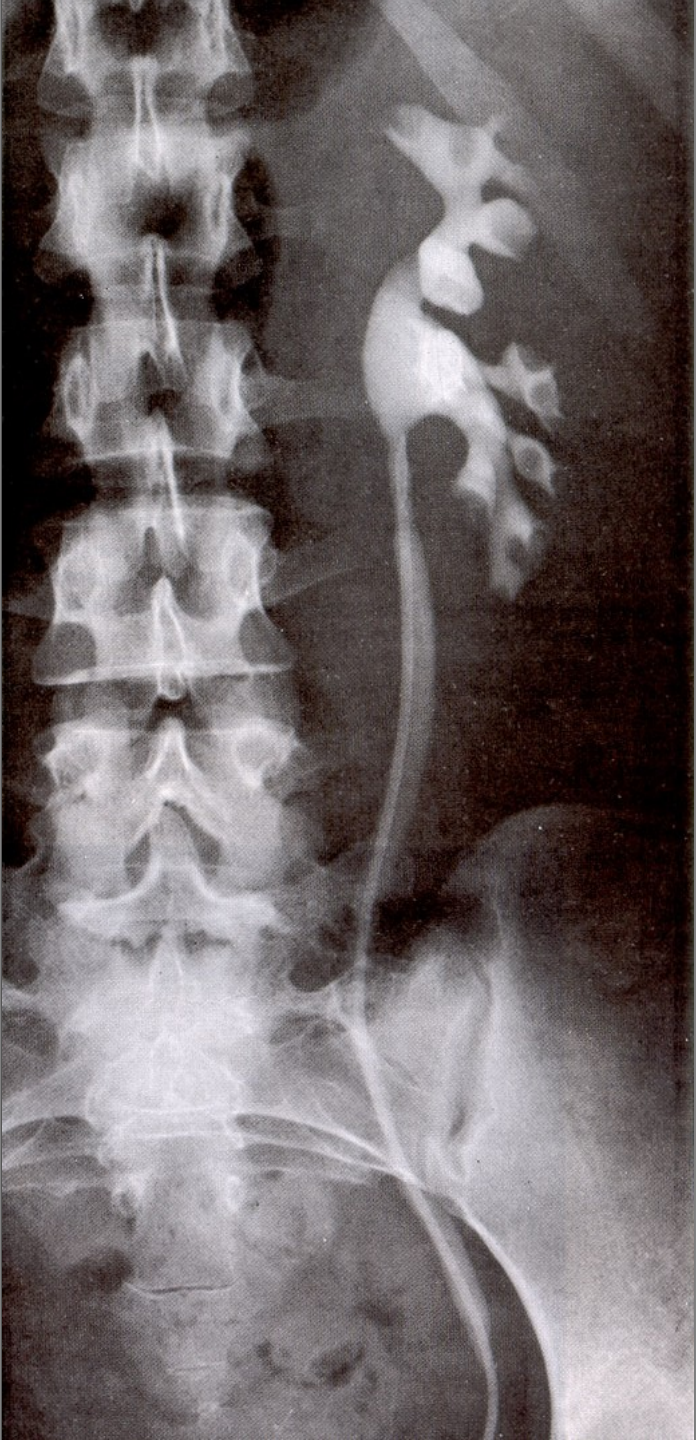
ERCP – endoscopic retrograde cholangiopancreatography



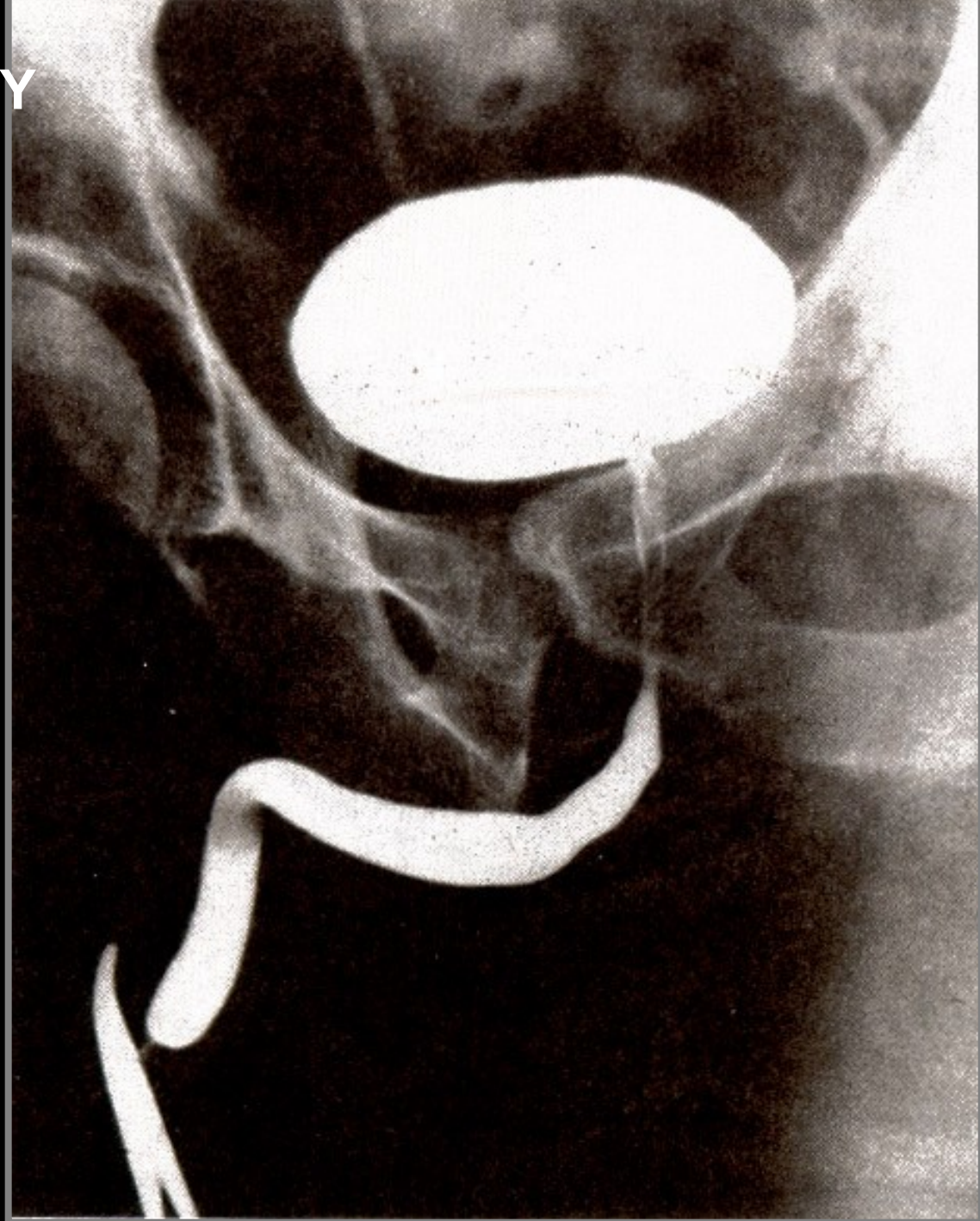
INTRAVENOUS UROGRAPHY (PYELOGRAPHY)



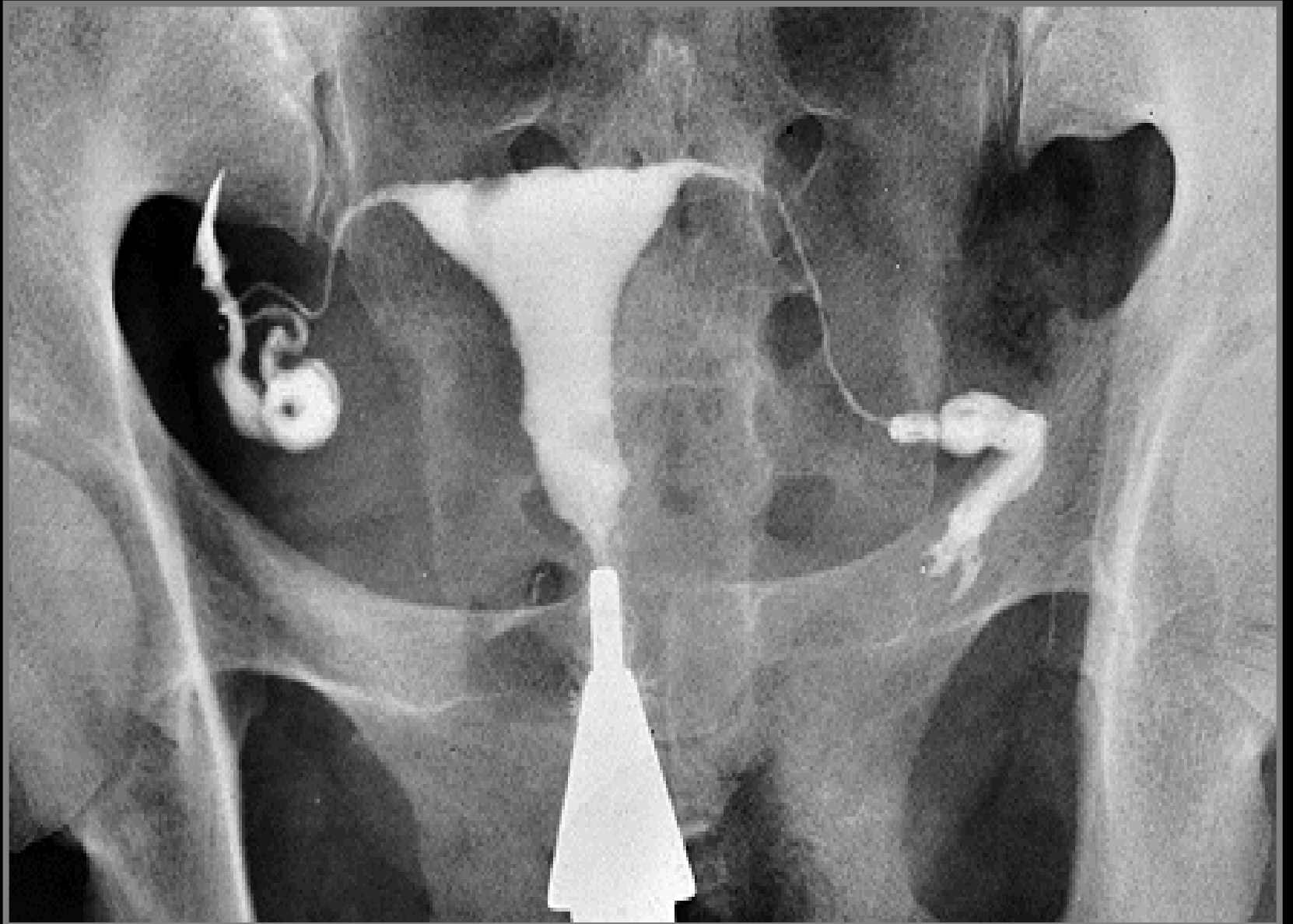
**ASCENDING
(RETROGRADE)
PYELOGRAPHY**



CYSTOGRAPHY

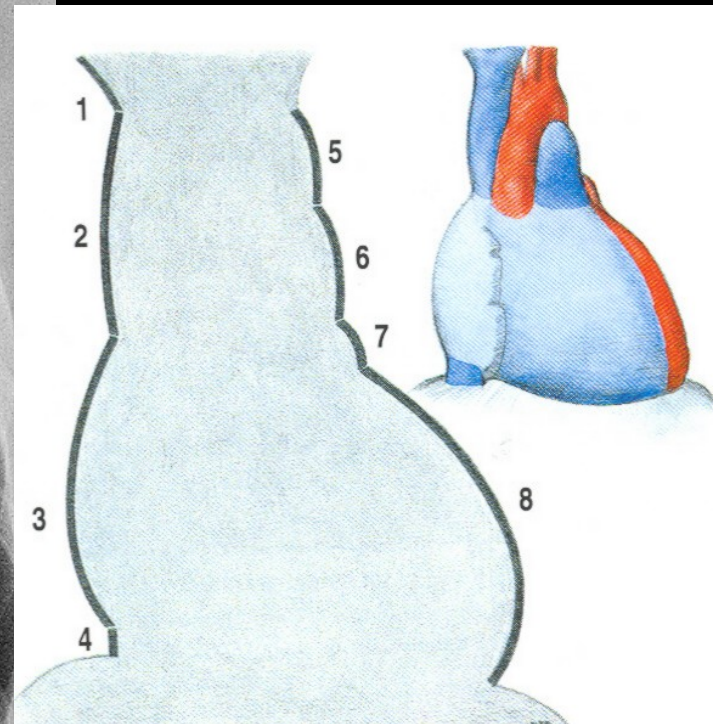
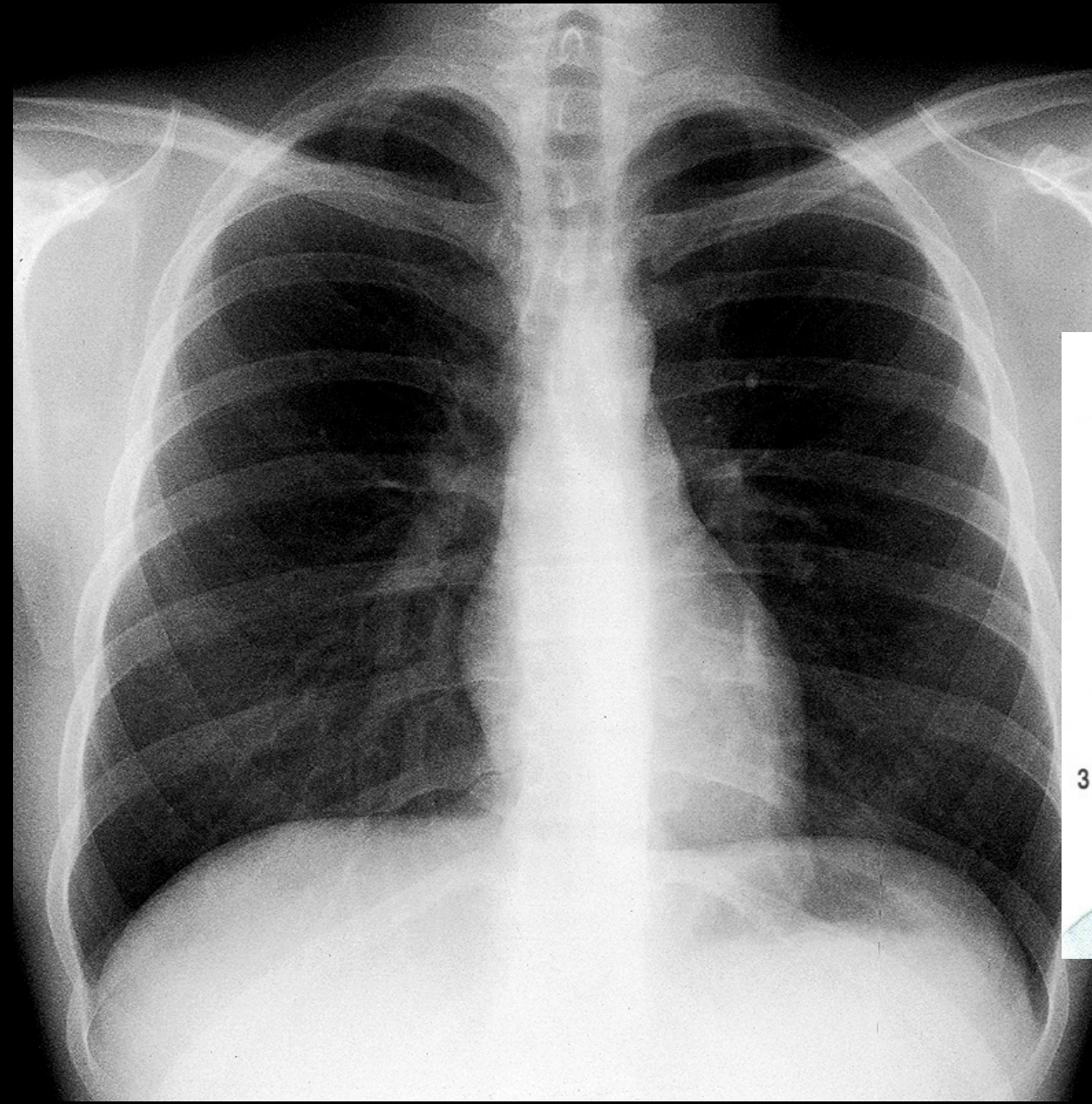


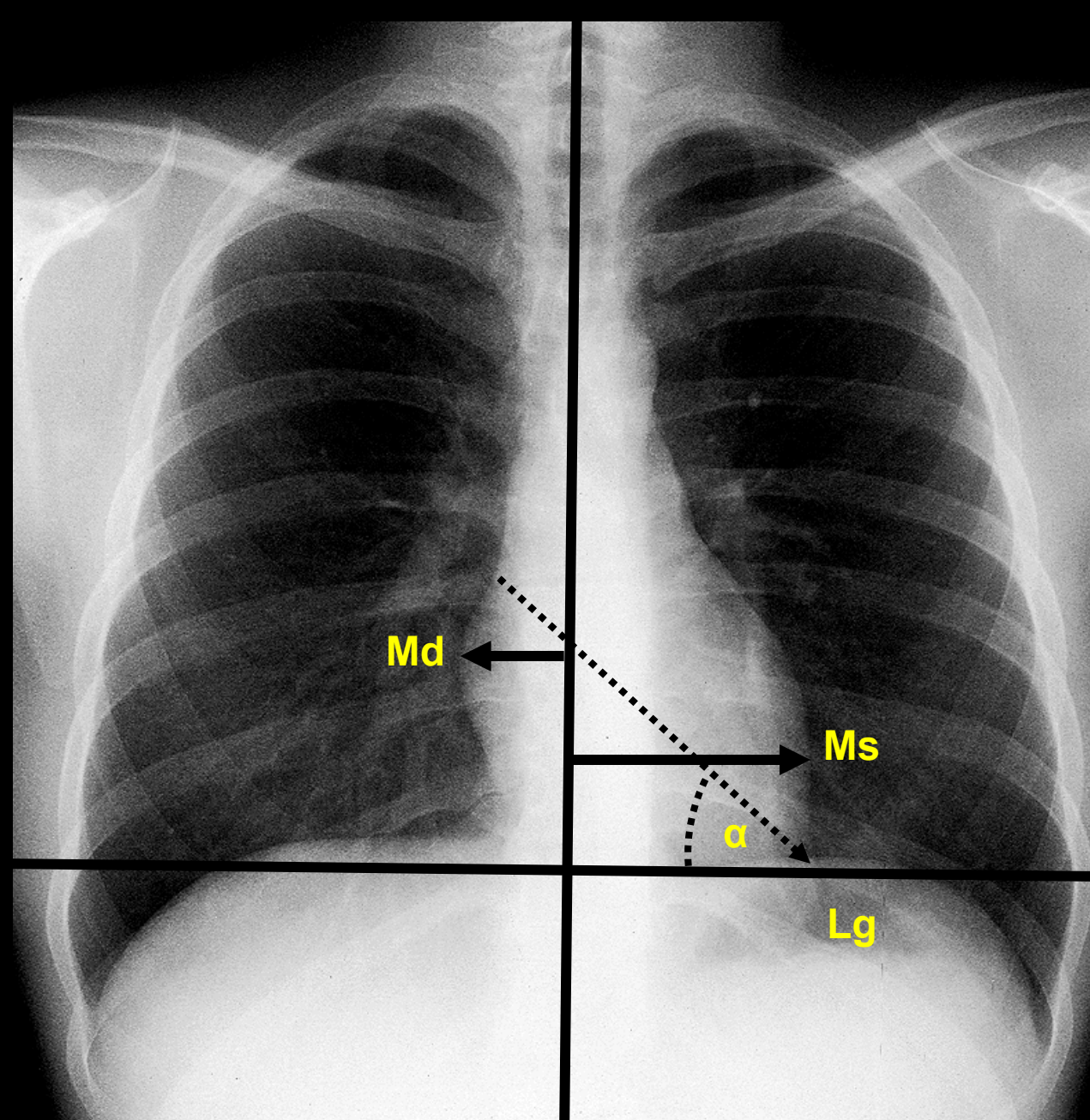
HYSTEOSALPINGOGRAPHY



SEMINAL VESICULOGRAPHY







Md - distantia mediodextra
4 - 4,5 cm

Ms - distantia mediosinistra
8 - 9 cm

Transverse line of the heart
 $Md + Ms = 15 \text{ cm}$

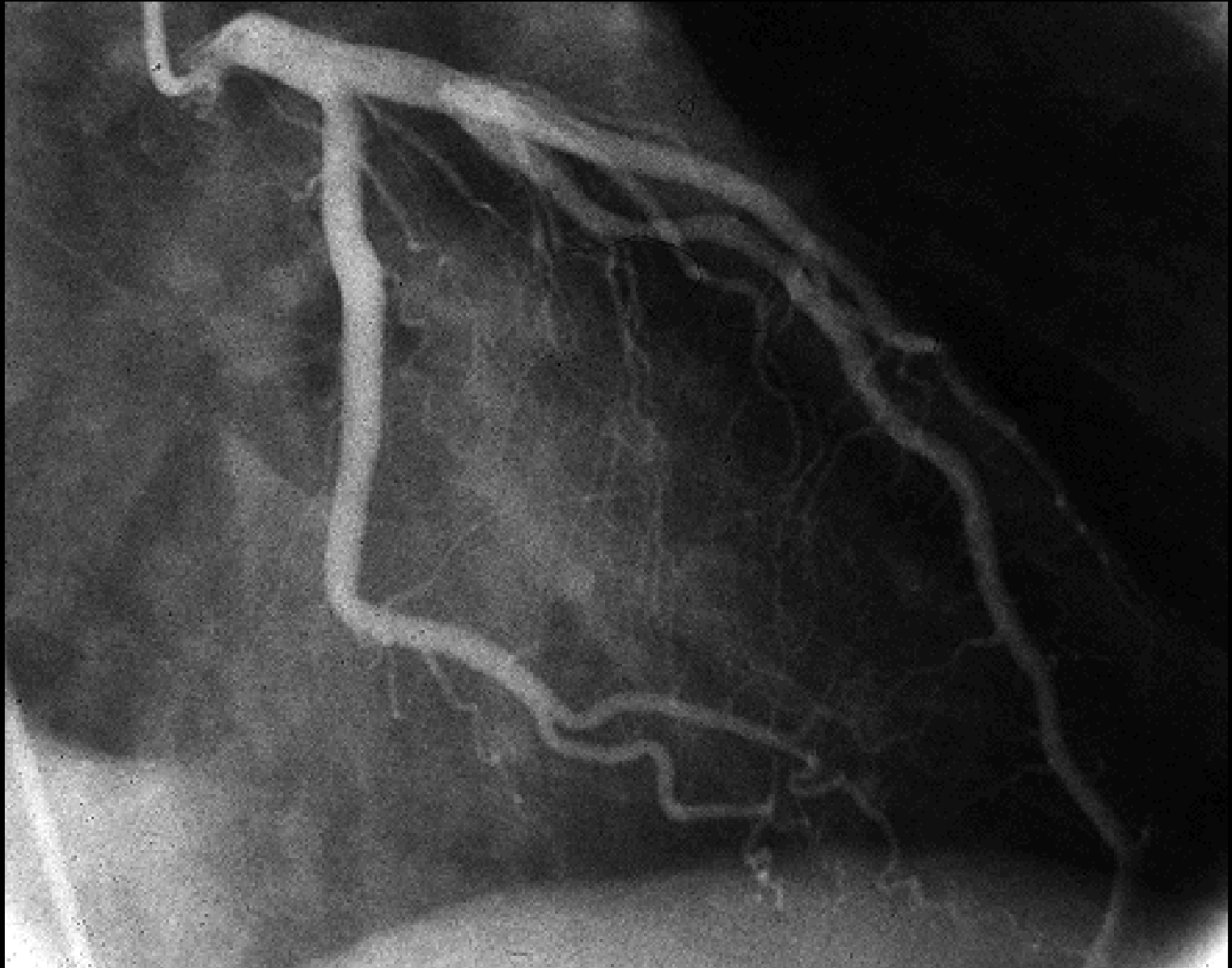
Lg (longitudo) – length of the heart

α – inclination of the heart
 $= 45^\circ$

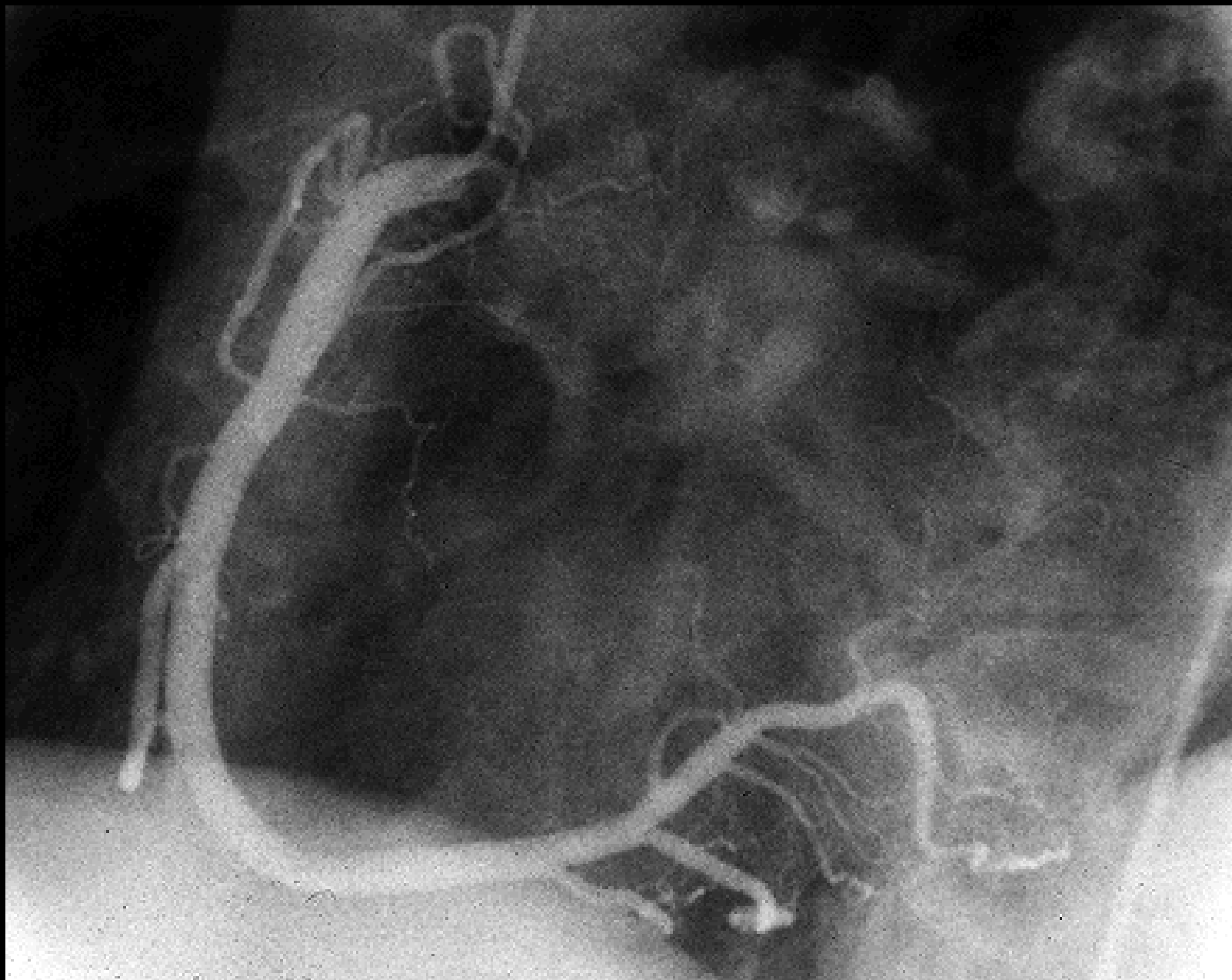
horizontal line

median plane

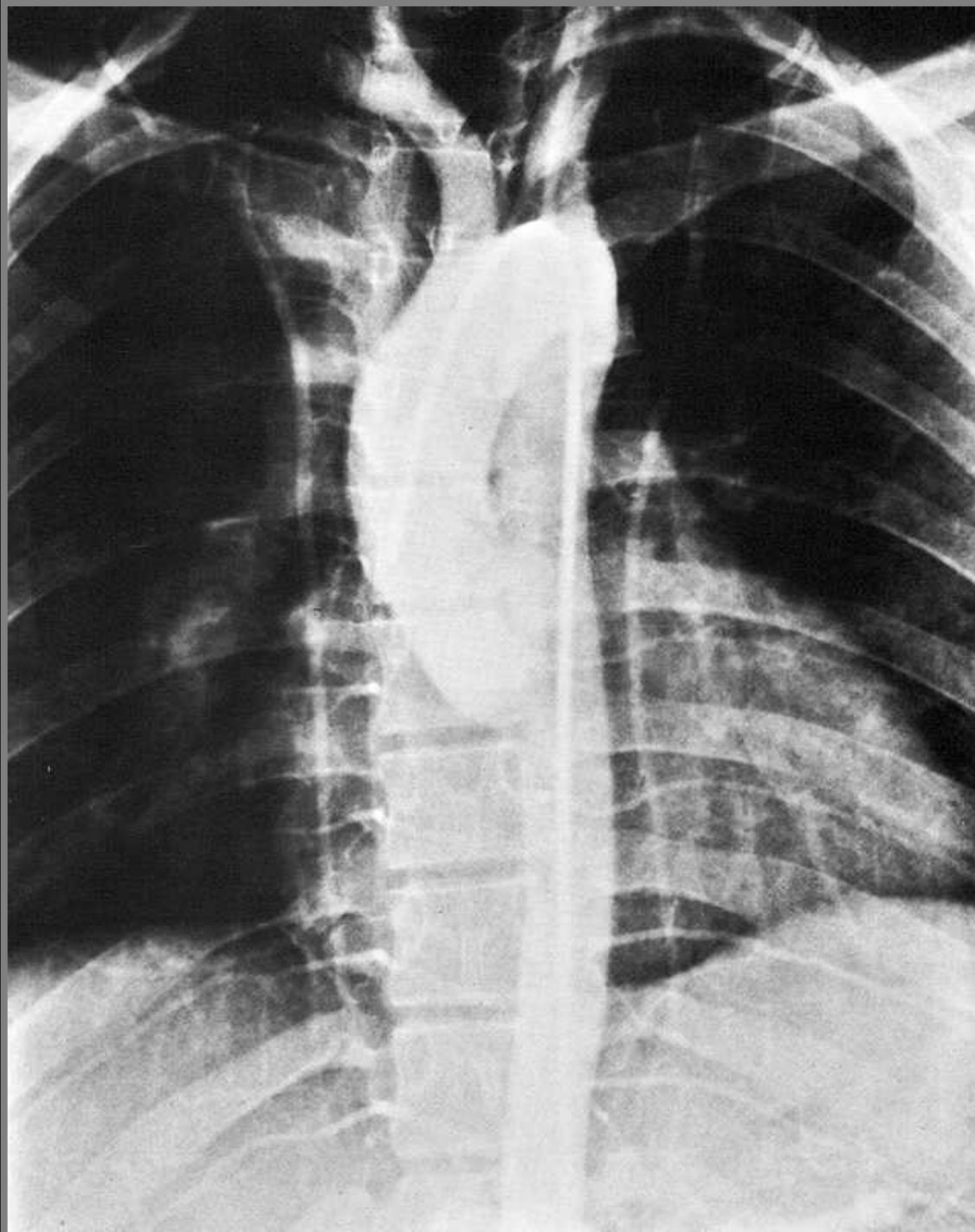
LEFT CORONARY ARTERY – RIGHT ANTERIOR OBLIQUE VIEW



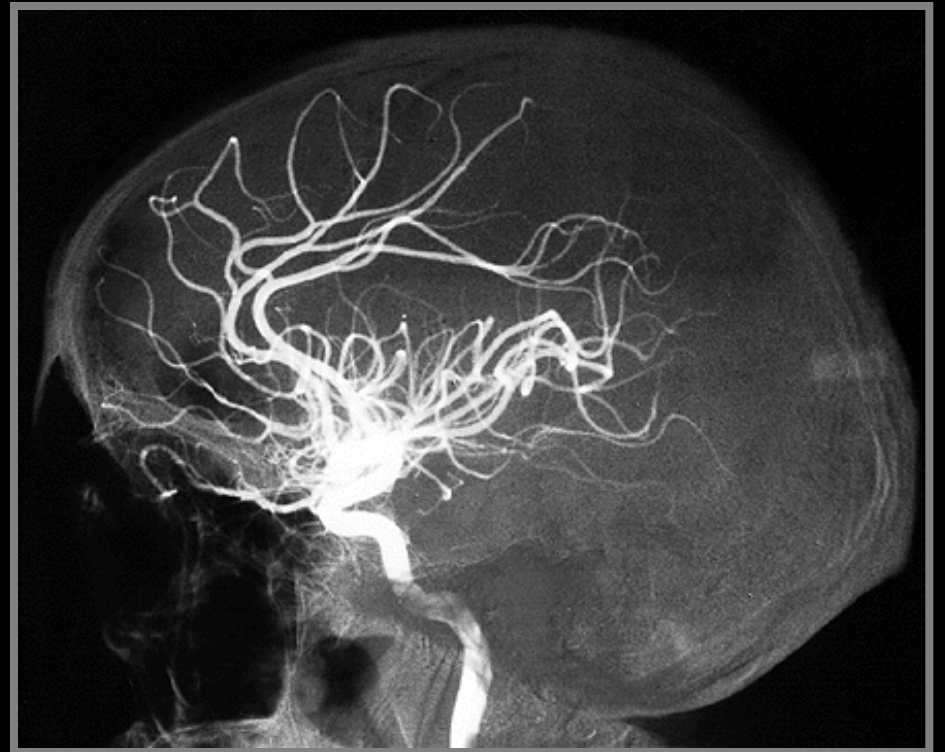
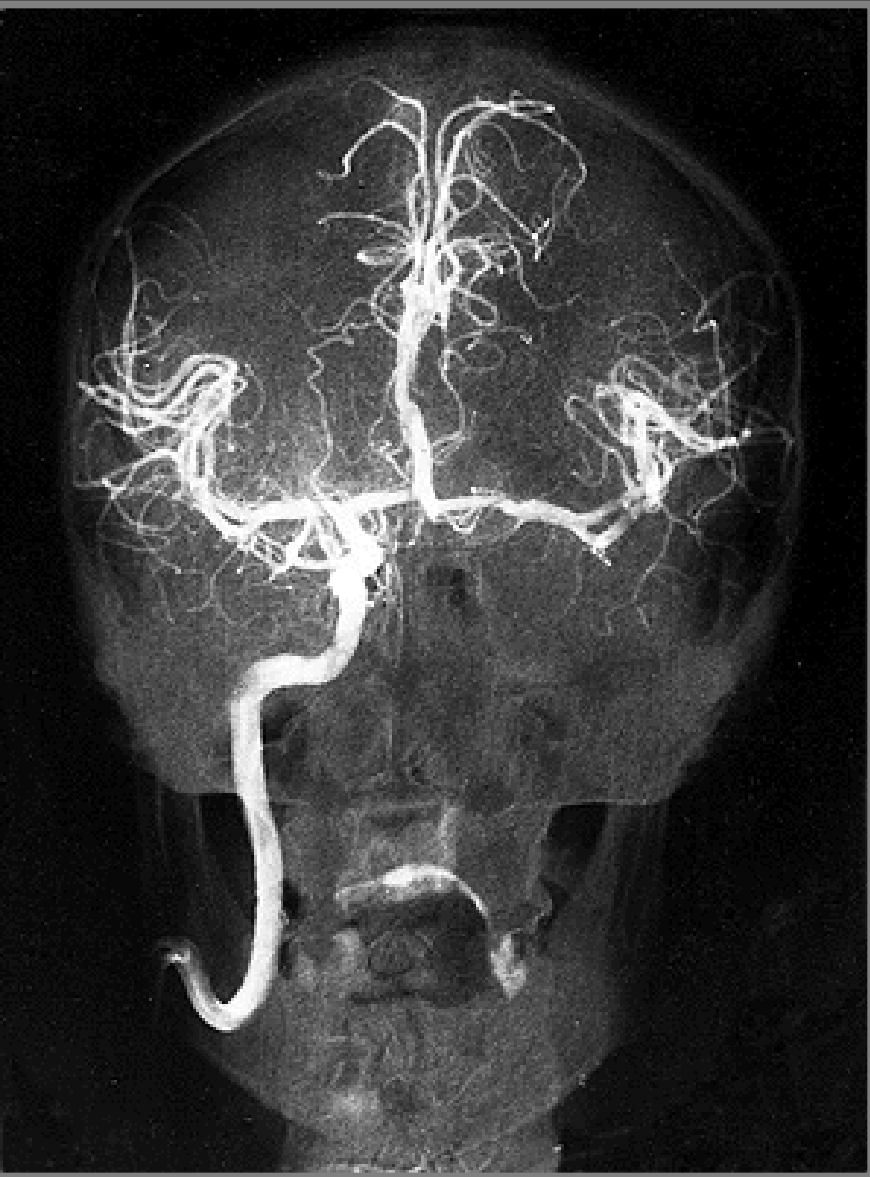
RIGHT CORONARY ARTERY – LEFT ANTERIOR OBLIQUE VIEW



AORTOGRAPHY



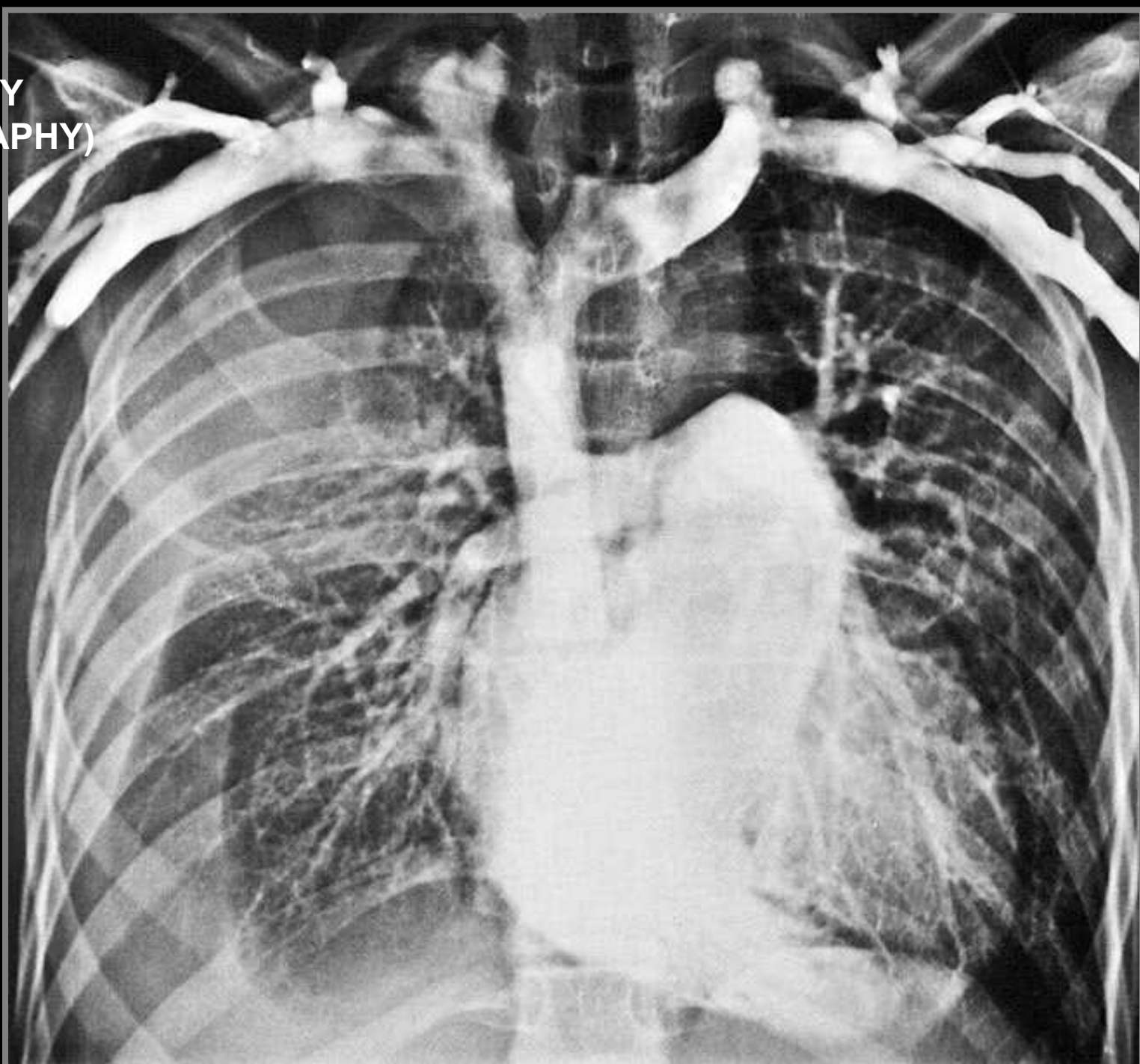
CAROTID ANGIOGRAPHY

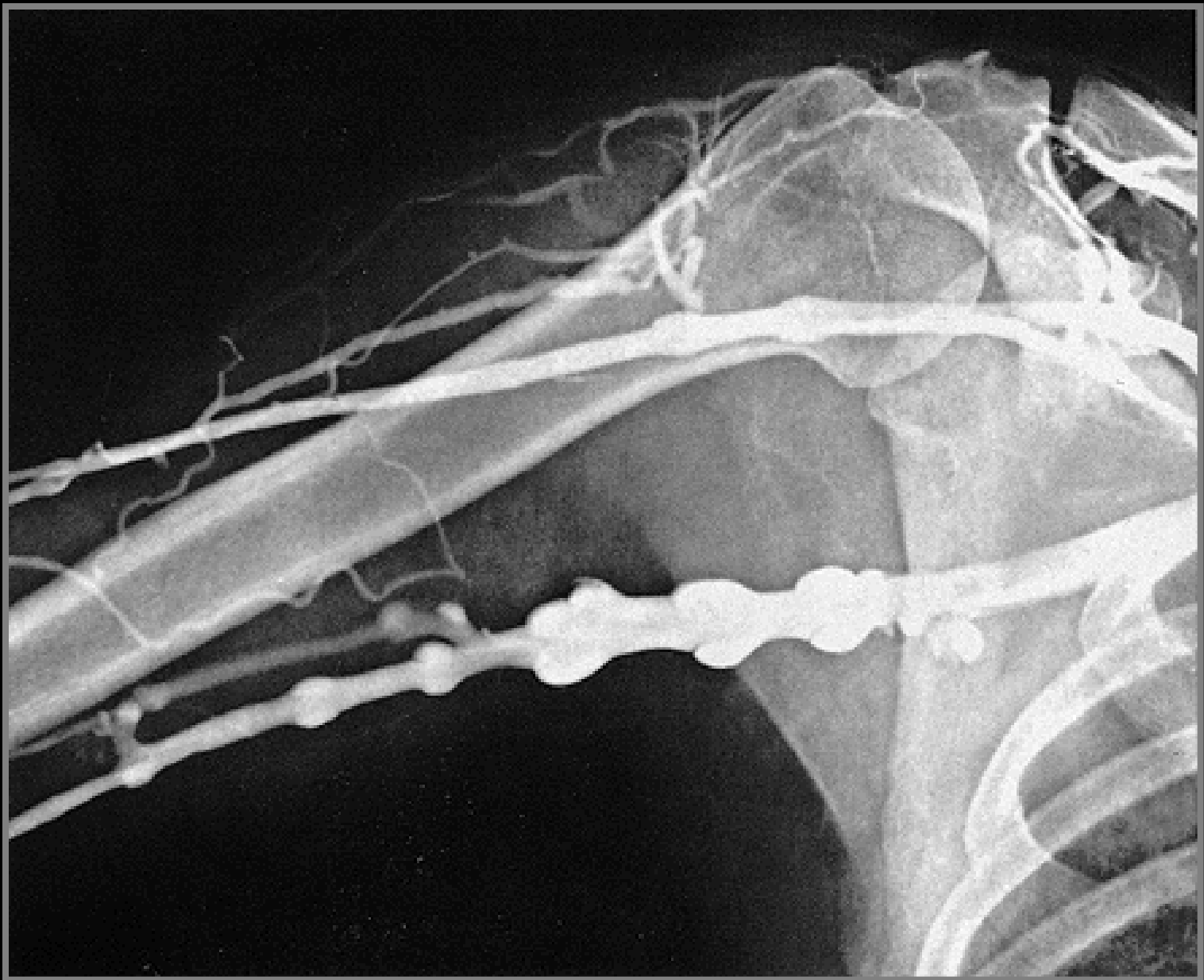


VERTEBRAL ANGIOGRAPHY



**VENOGRAPHY
(PHLEBOGRAPHY)**

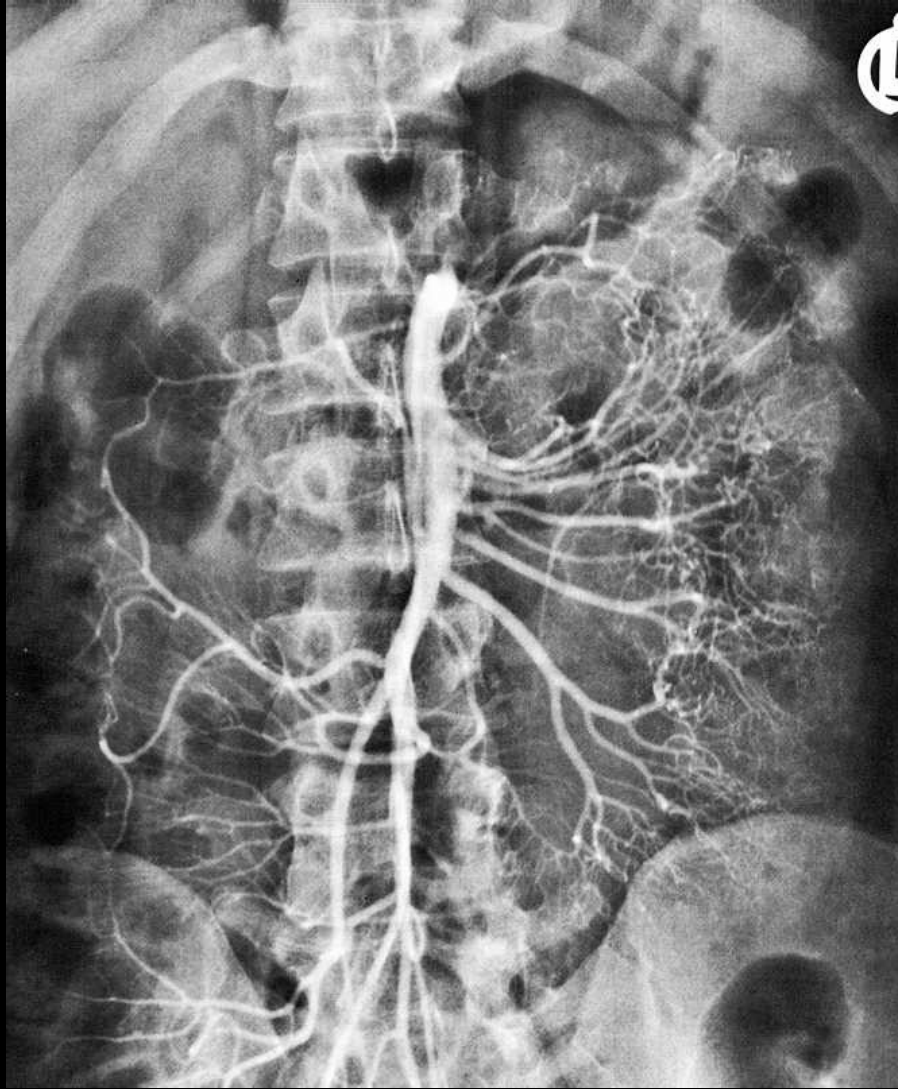




LYMPHOGRAPHY



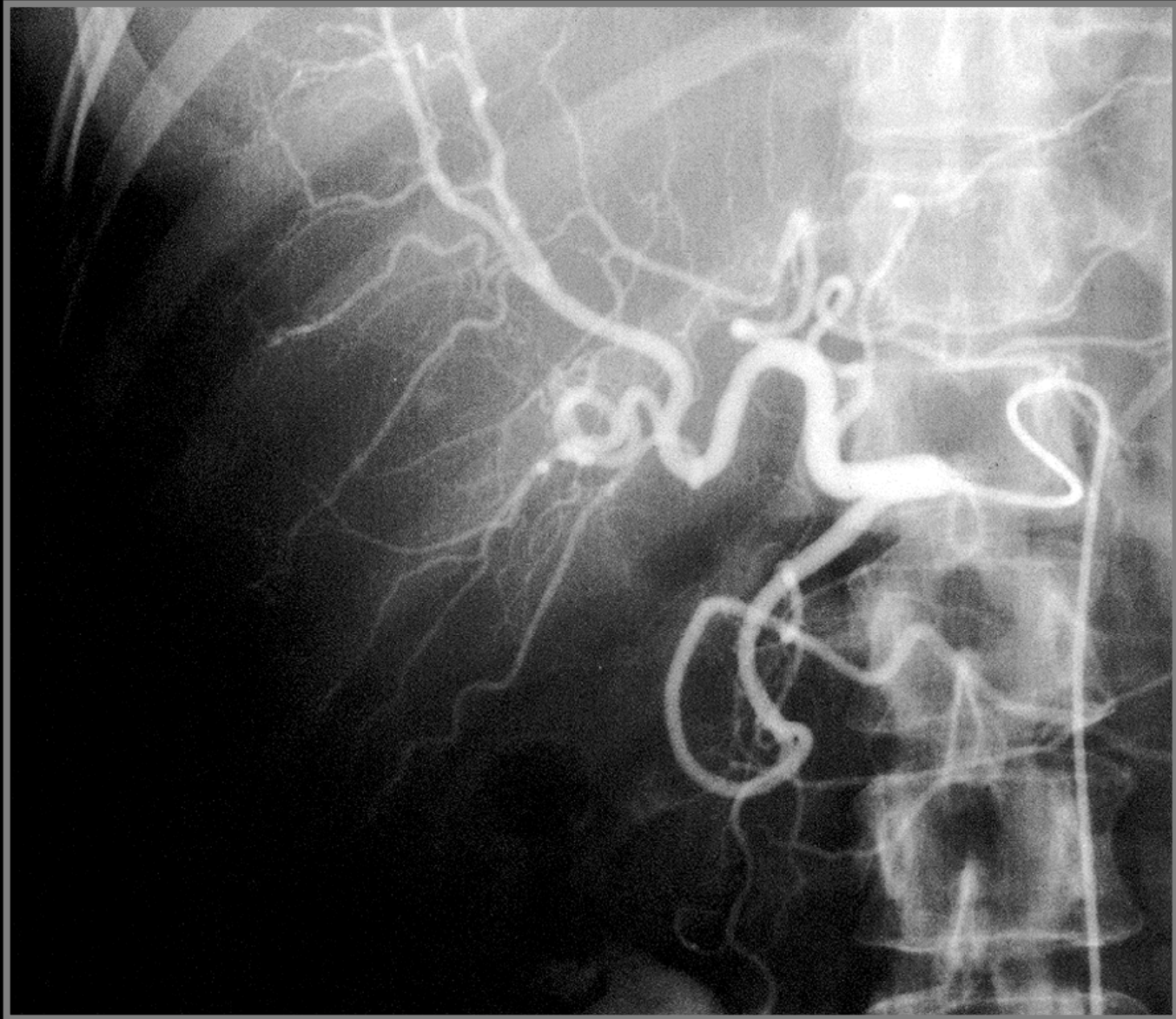
ANGIOGRAPHY



A. mesenterica superior

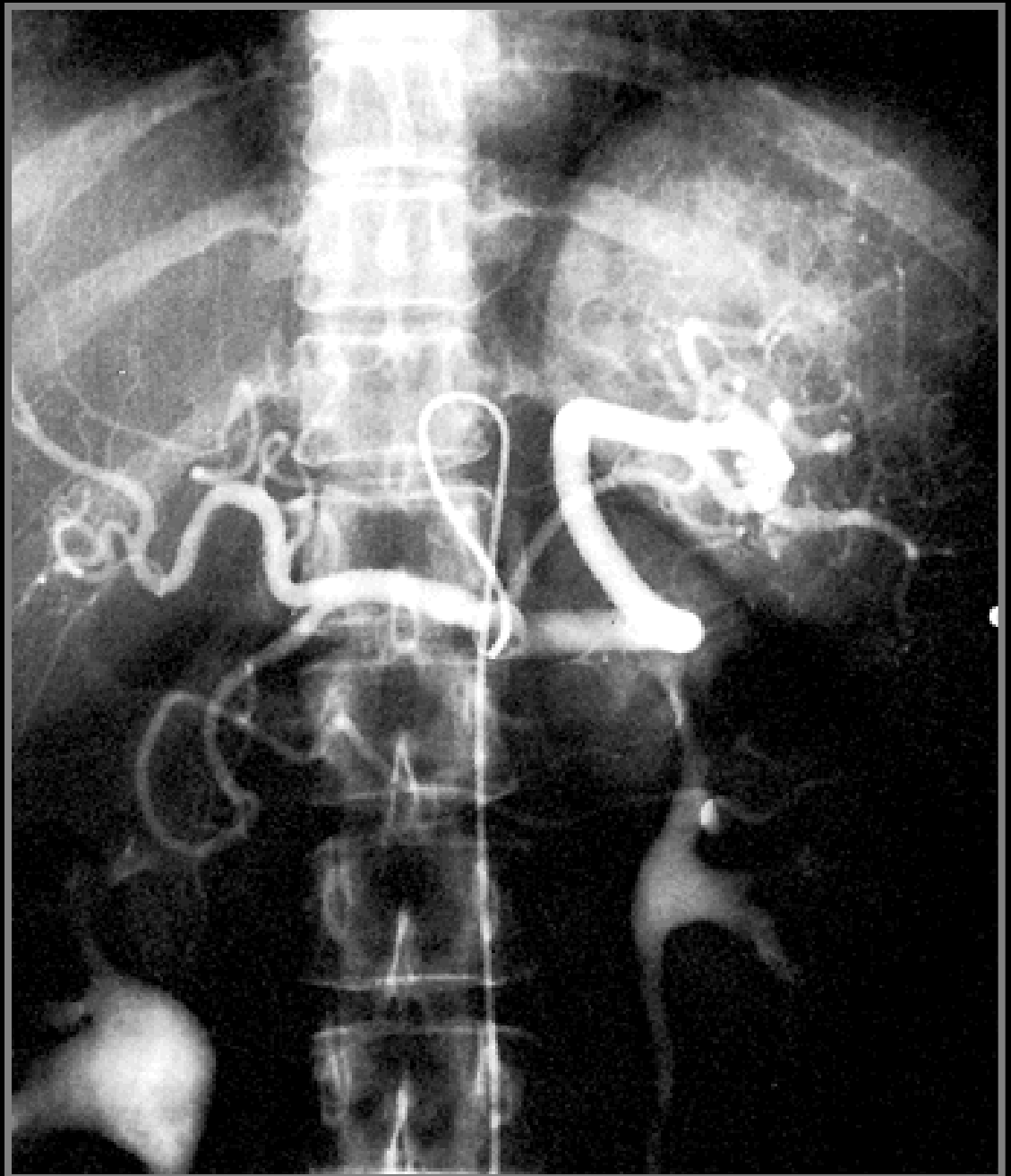
A. mesenterica inferior



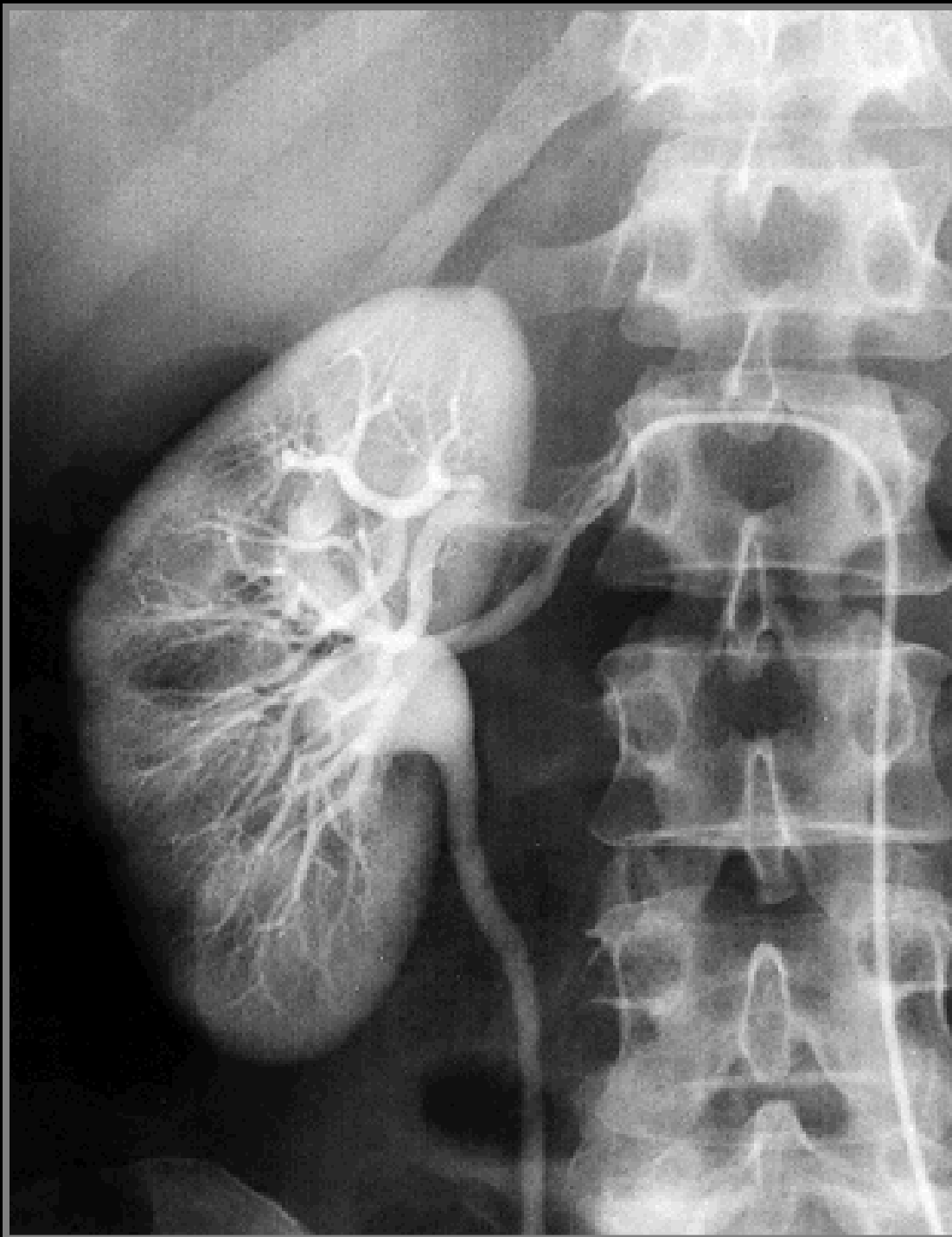


Common hepatic artery

TRUNCUS COELIACUS



A. RENALIS



AA. ILIACAE

