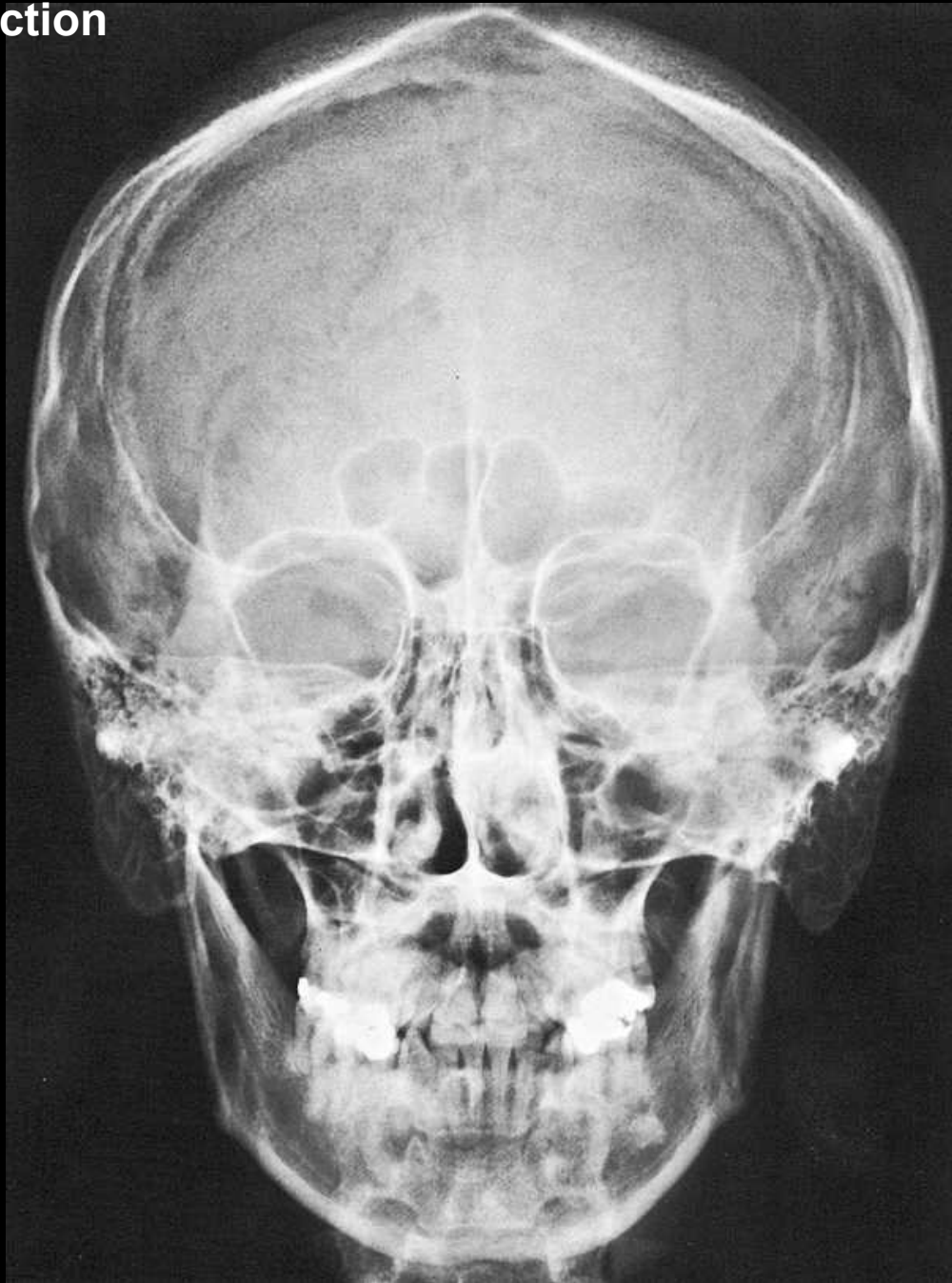
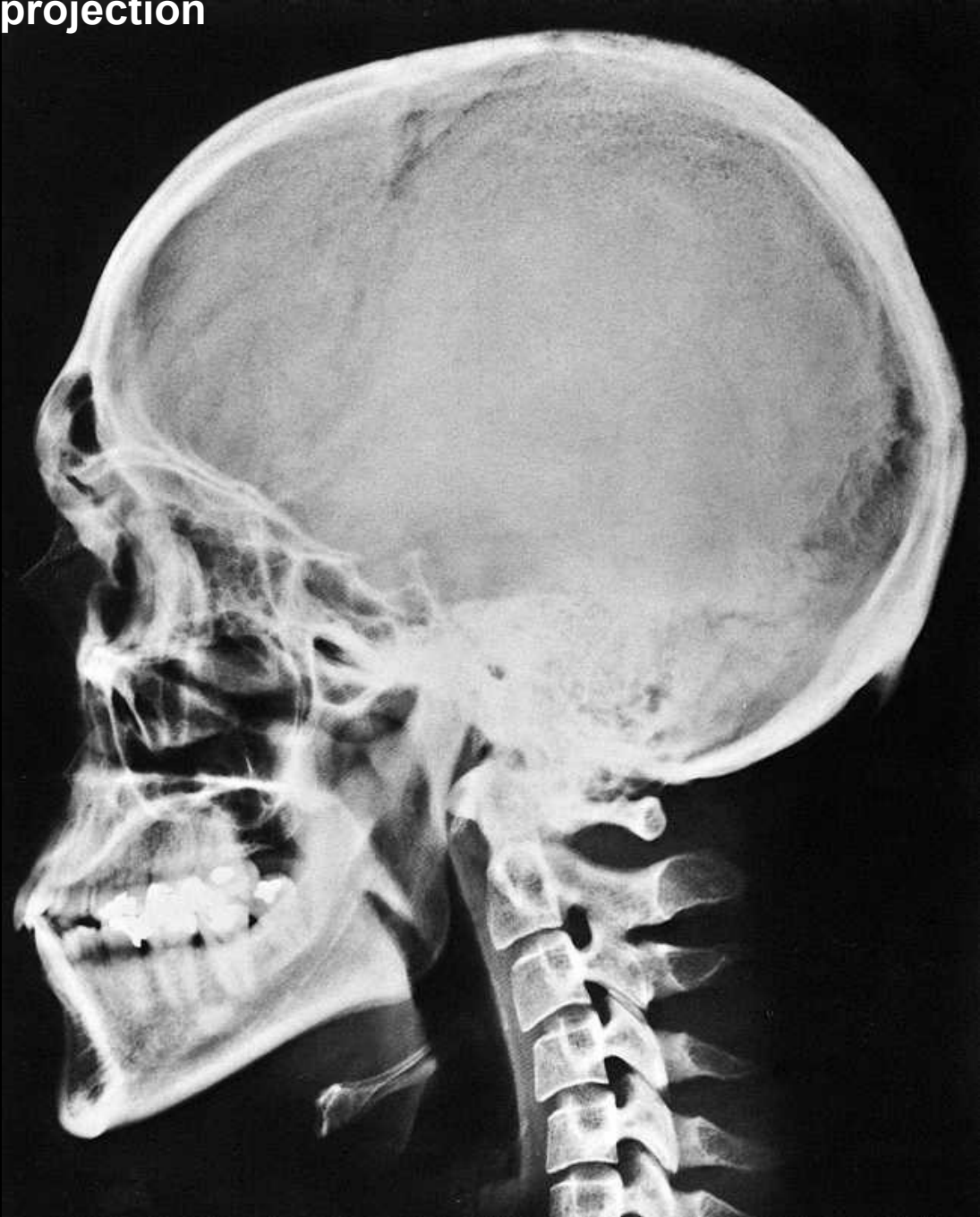


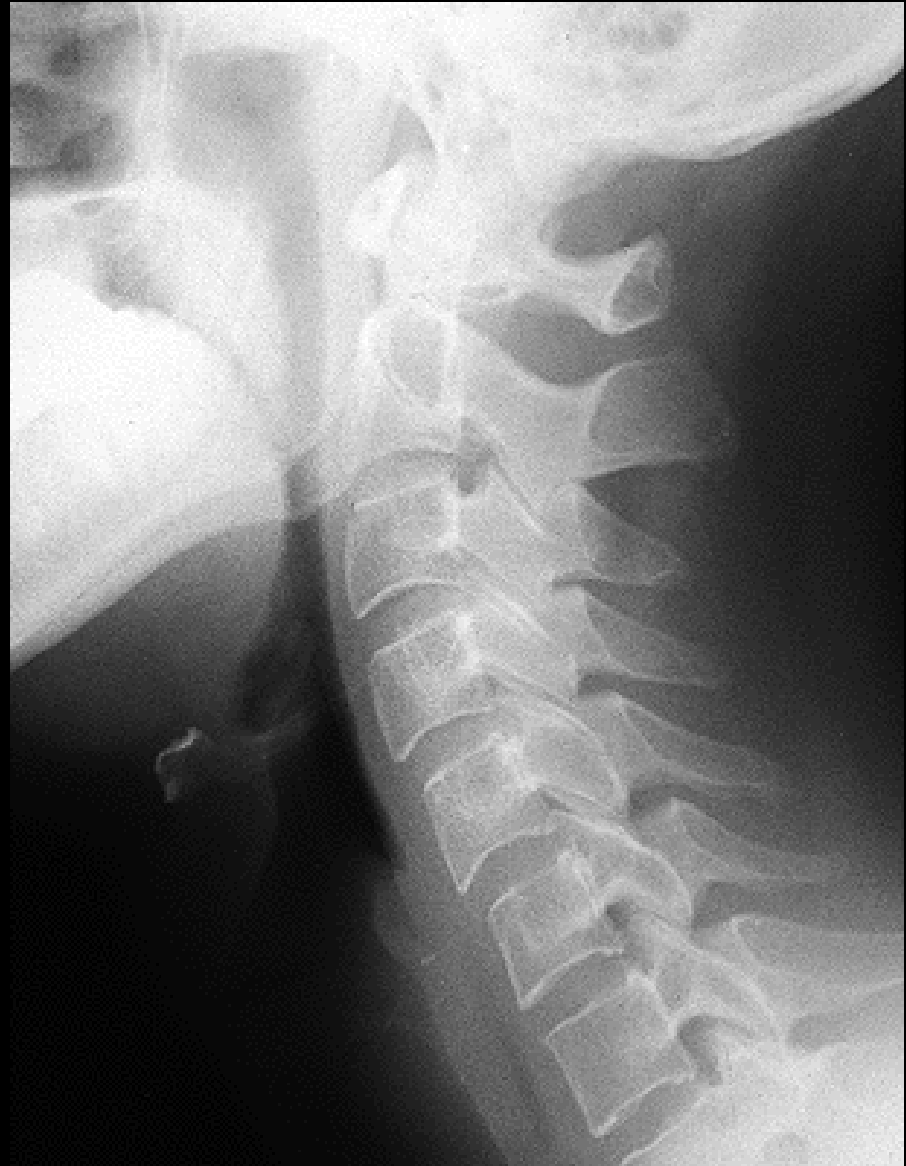
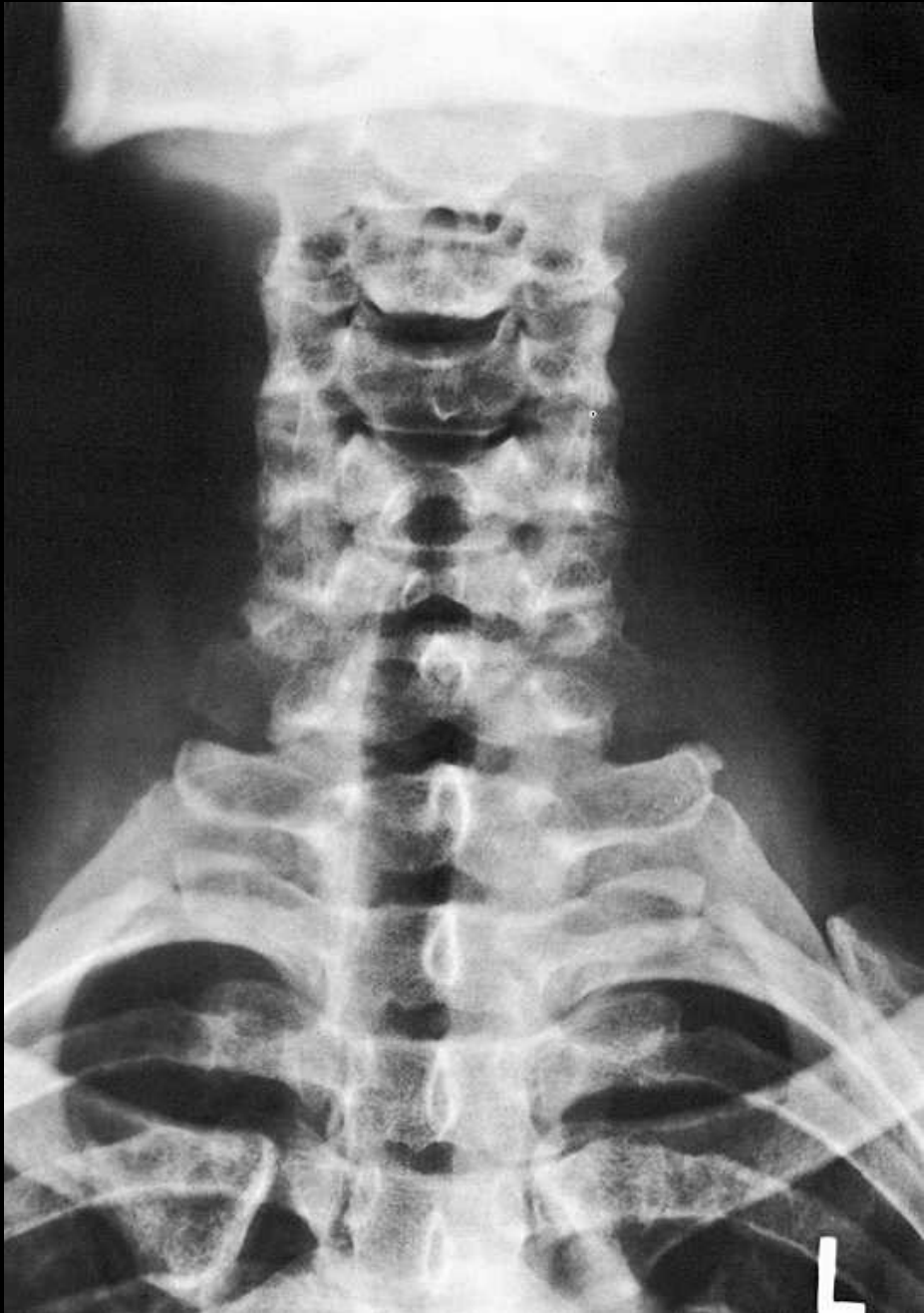
Head – axial projection



Head – lateral projection

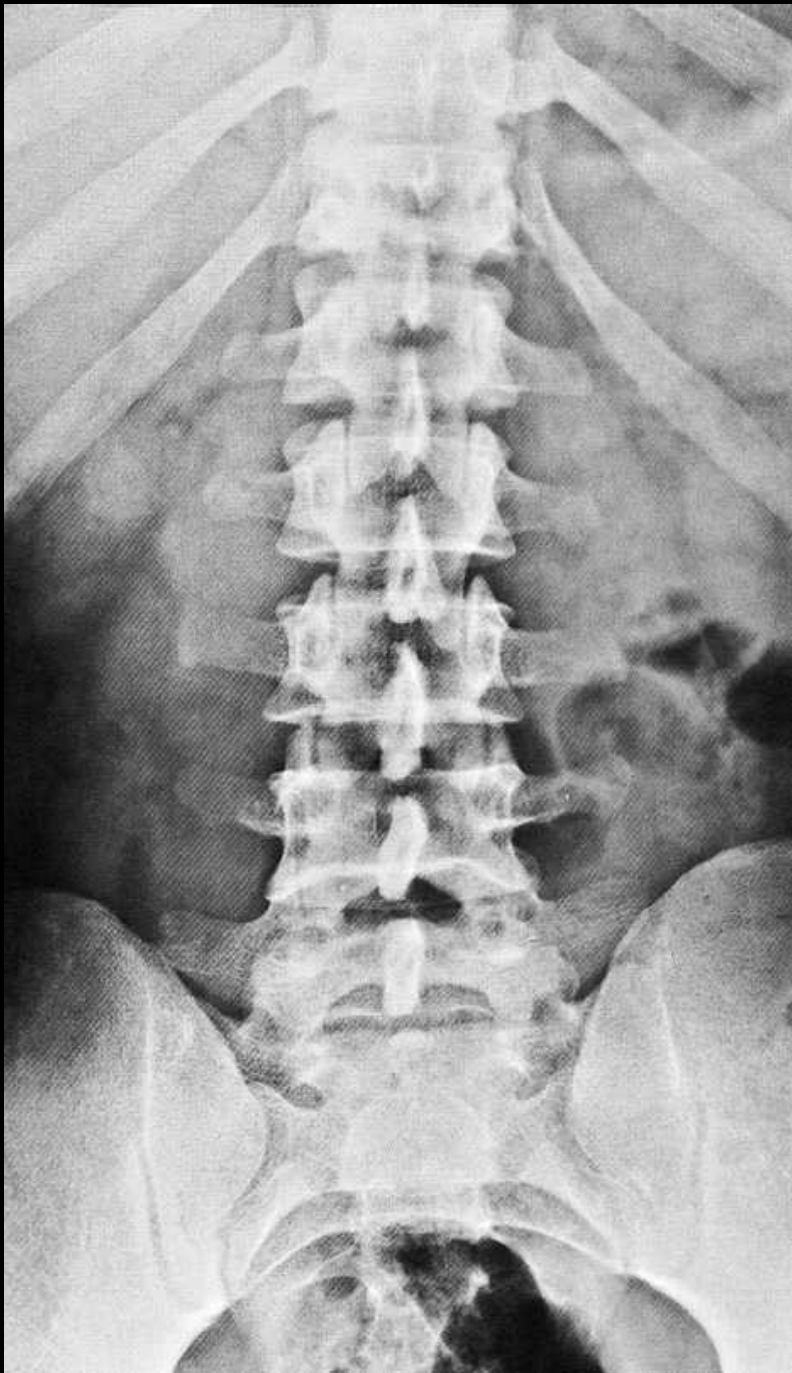


**Cervical part of the spine:
axial and lateral projection**



**Thoracic part of the spine:
axial and lateral projection**





Lumbar part of the spine: axial and lateral projection



Pelvis



Knee joint: axial and lateral projection



Foot: lateral projection



Foot: dorsoplantar projection



Shoulder joint: axial projection



Elbow joint: axial and lateral projection



X-ray of an child's hand and wrist



X-ray of an adult's hand and wrist



X-ray of the chest

