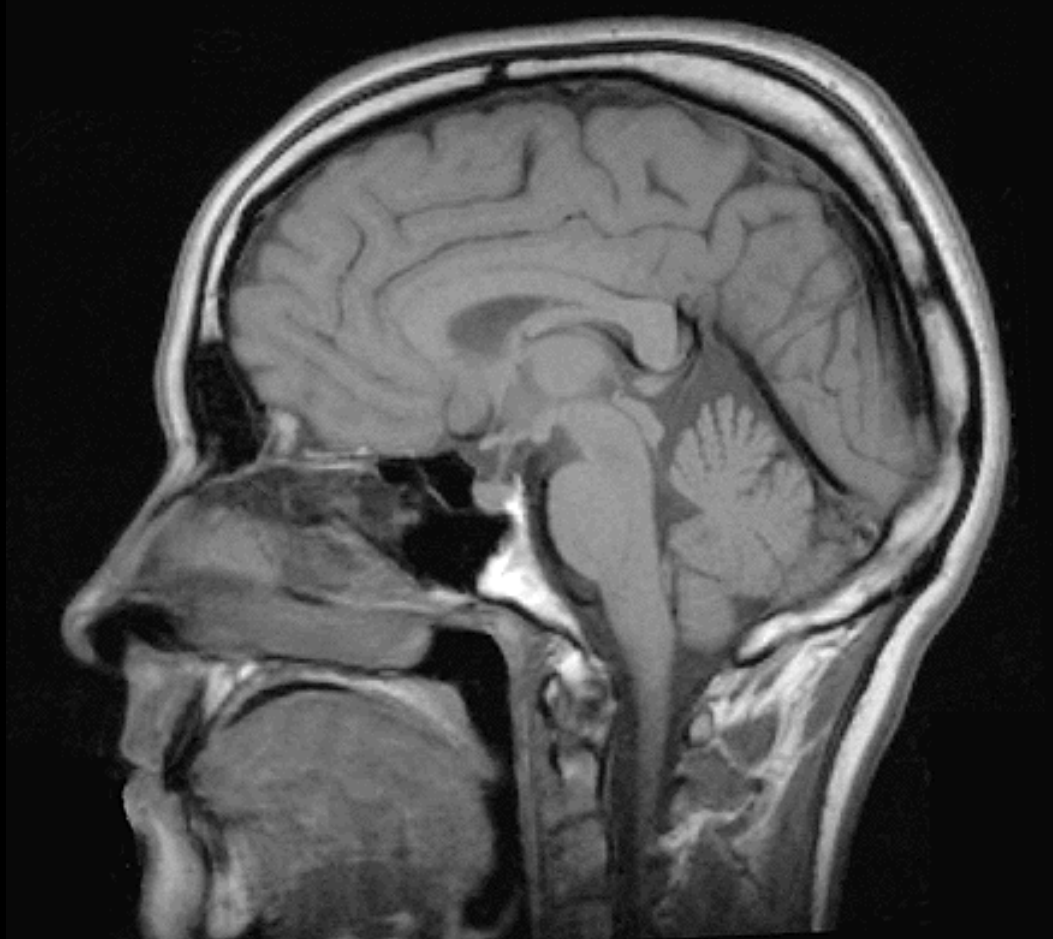
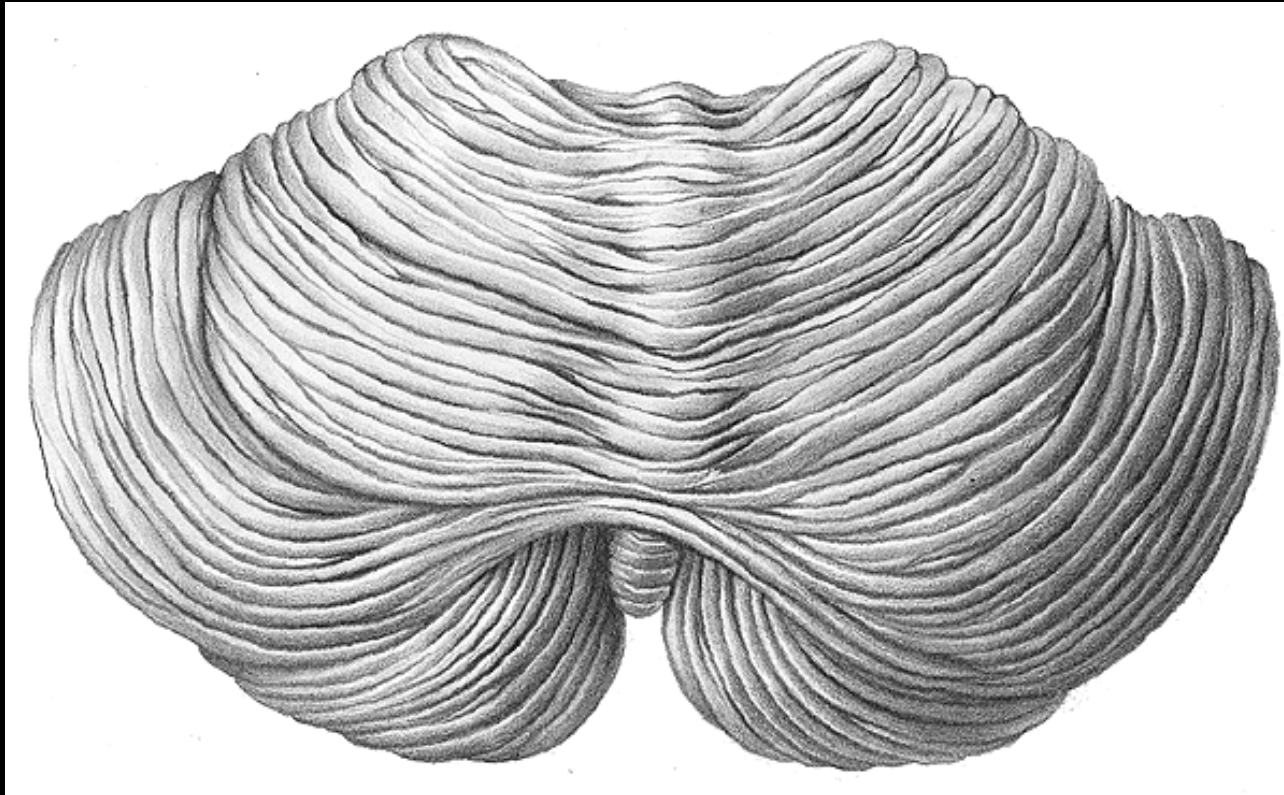


Cerebellum

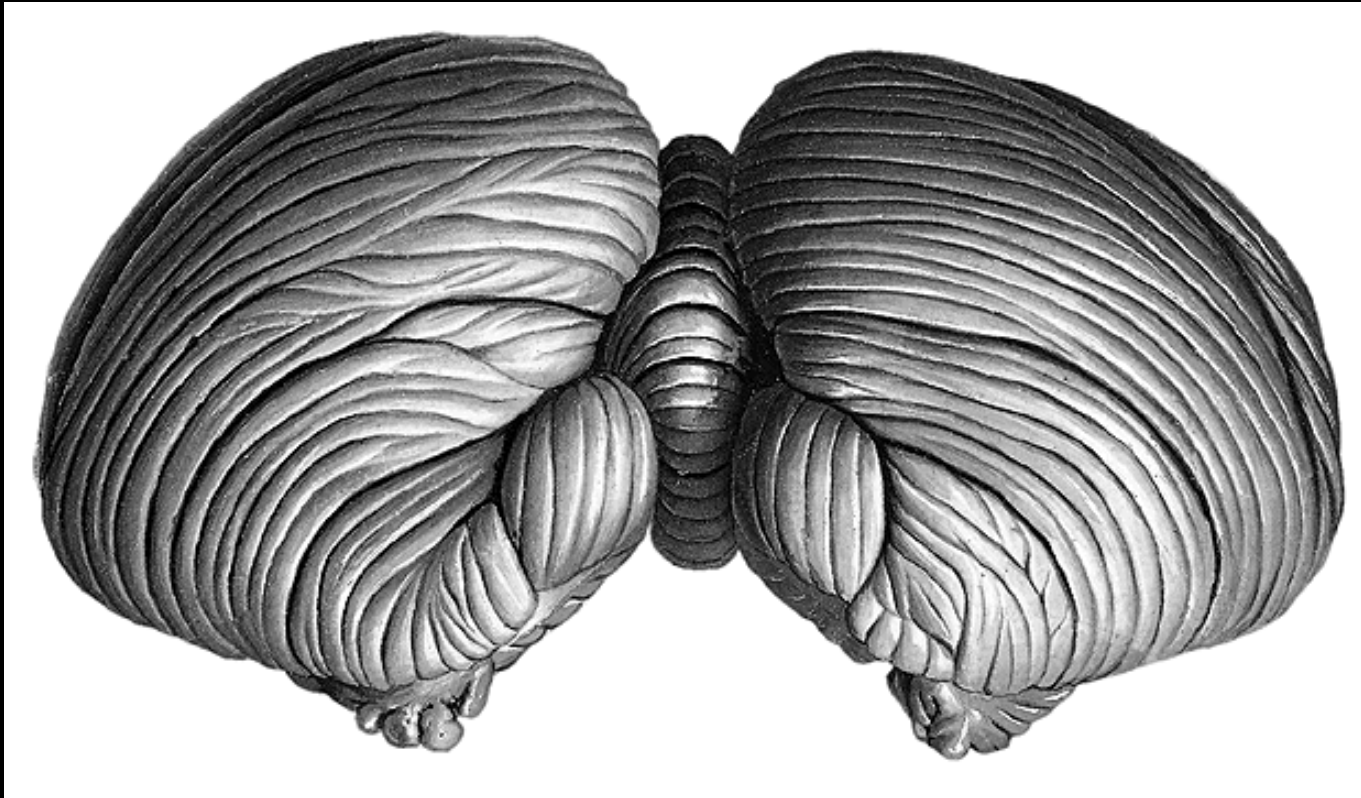


Coordination of movements



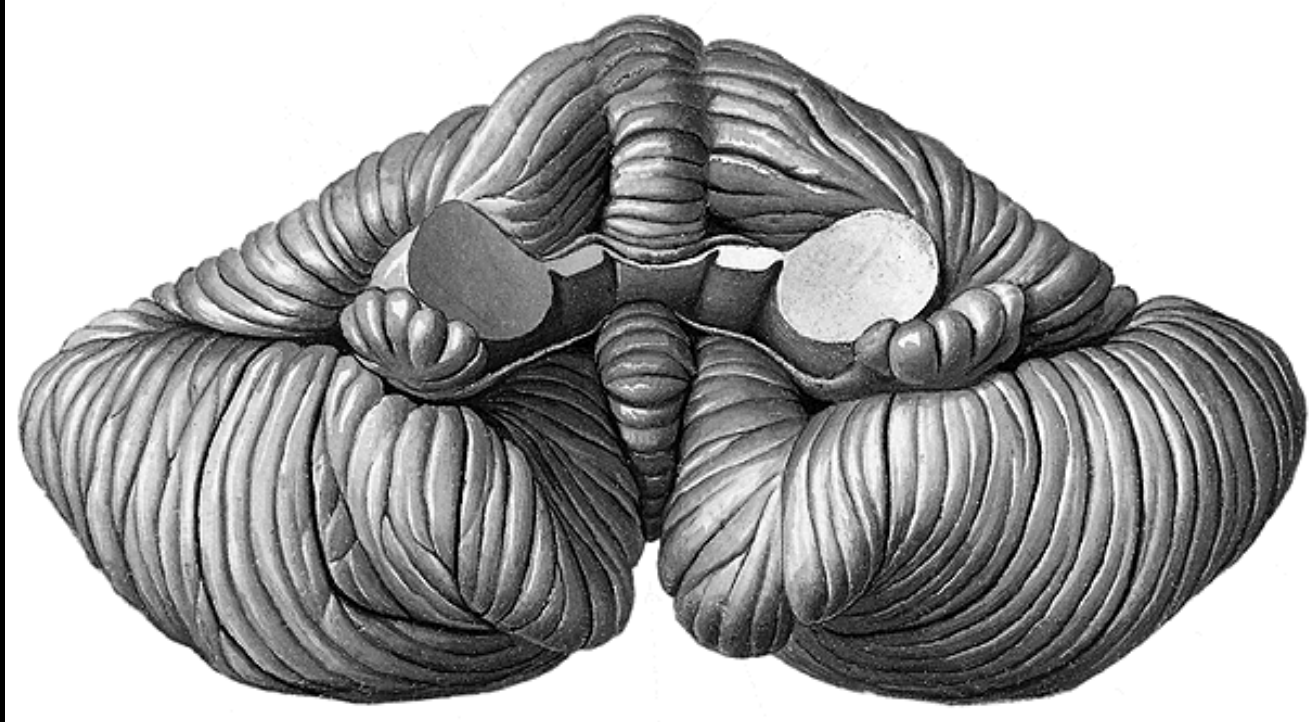
Margo ant., incisura cerebelli ant.

Margo post., incisura cerebelli post.

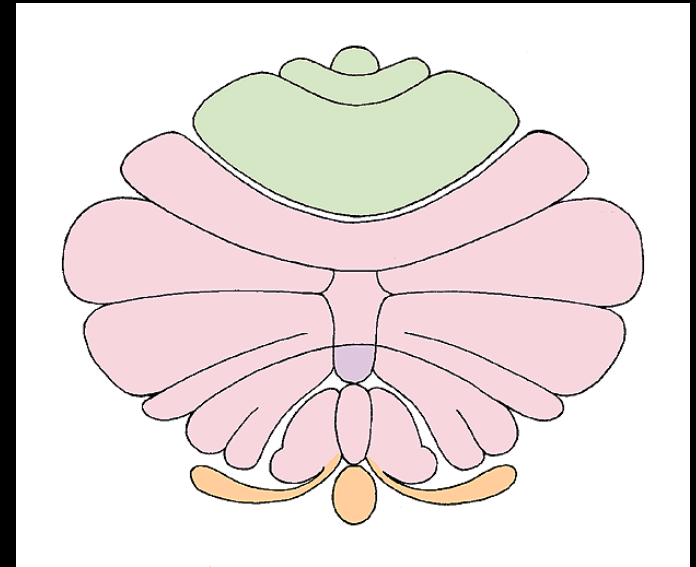
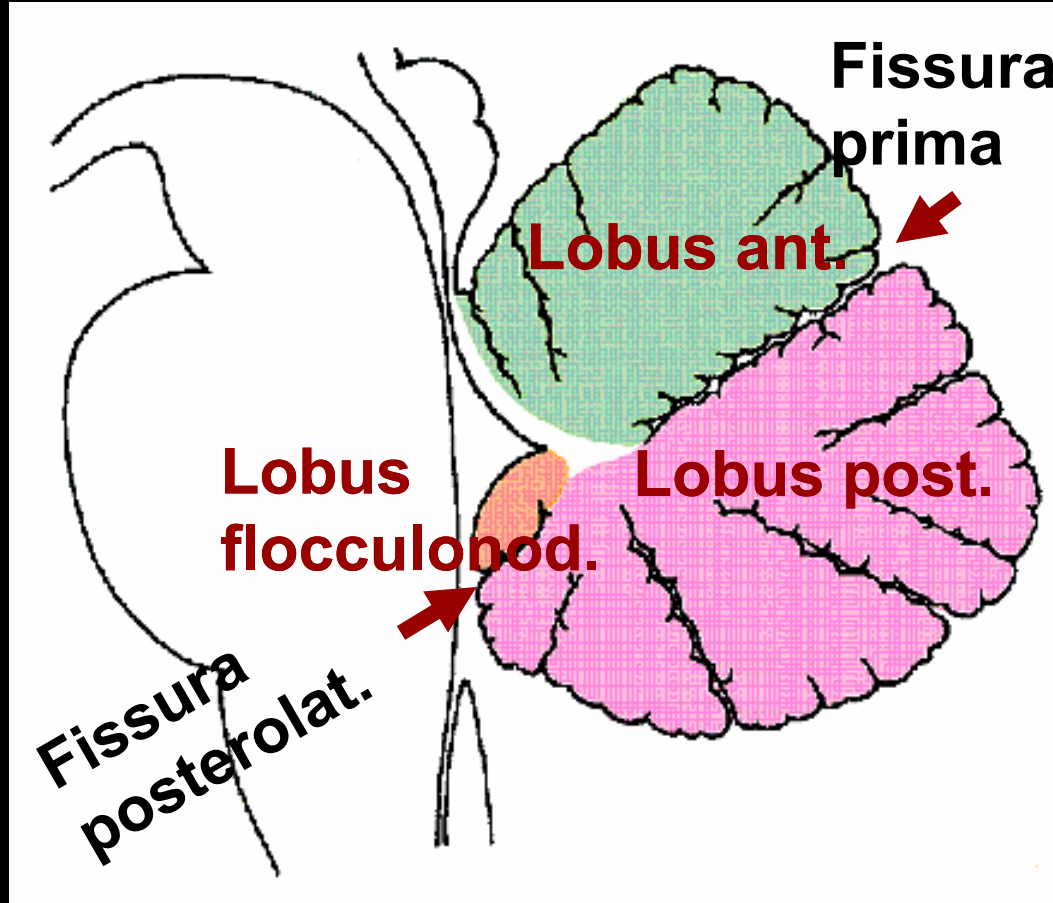


Vermis
Hemispheres

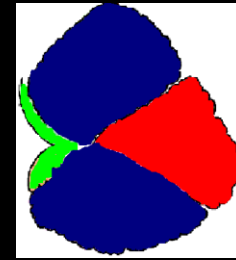
Folia, lobuli, lobi



Pars flocculonodularis



Developmental anatomy



**Afferents from
vestib. labyrinth**
fish, amphibians

**Archi-
cerebellum**

**VESTIBULO -
CEREBELLUM**

**Afferents from
spinal cord and
brainstem**
reptiles, birds,
mammals

**Paleo-
cerebellum**

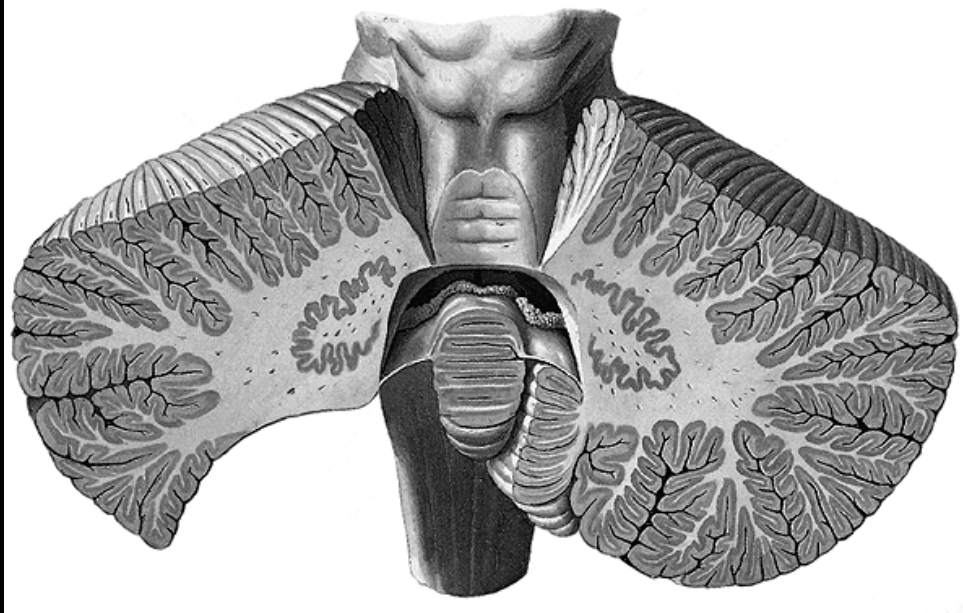
**SPINO -
CEREBELLUM**

**Afferents from
cortex
telencephali**

**Neo-
cerebellum**

**PONTO -
CEREBELLUM**

Structure of the cerebellum



Grey matter

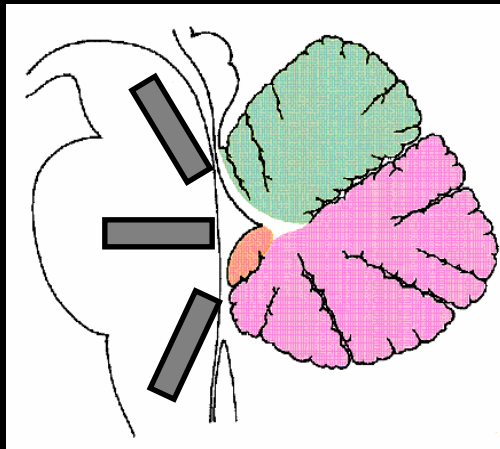
Cortex cerebelli

→ str. moleculare

← str. ganglionare

→ str. granulare

Nuclei cerebellares

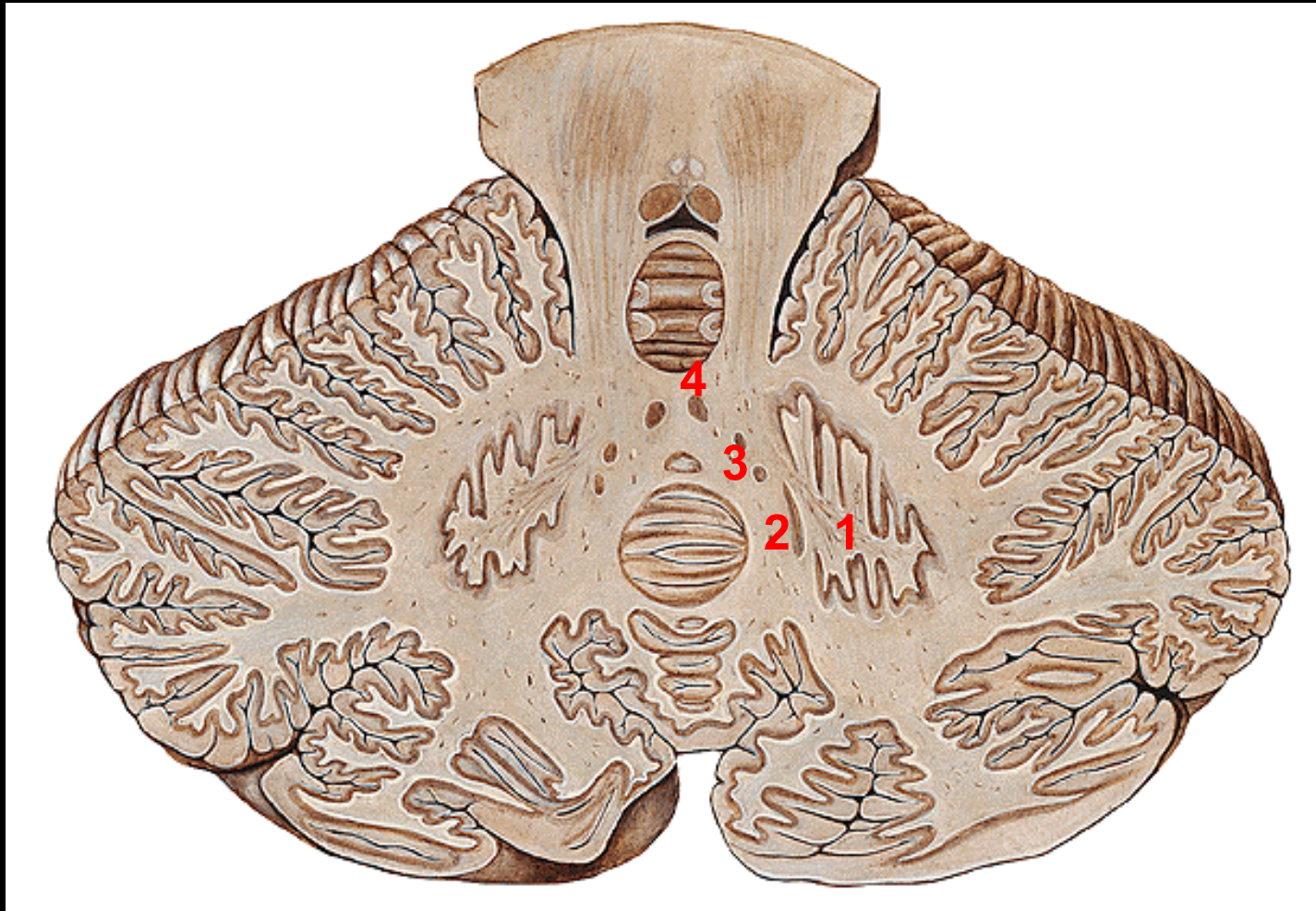


White matter

Subst. medullaris

laminae albae (arbor vitae)

Pedunculi cerebellares



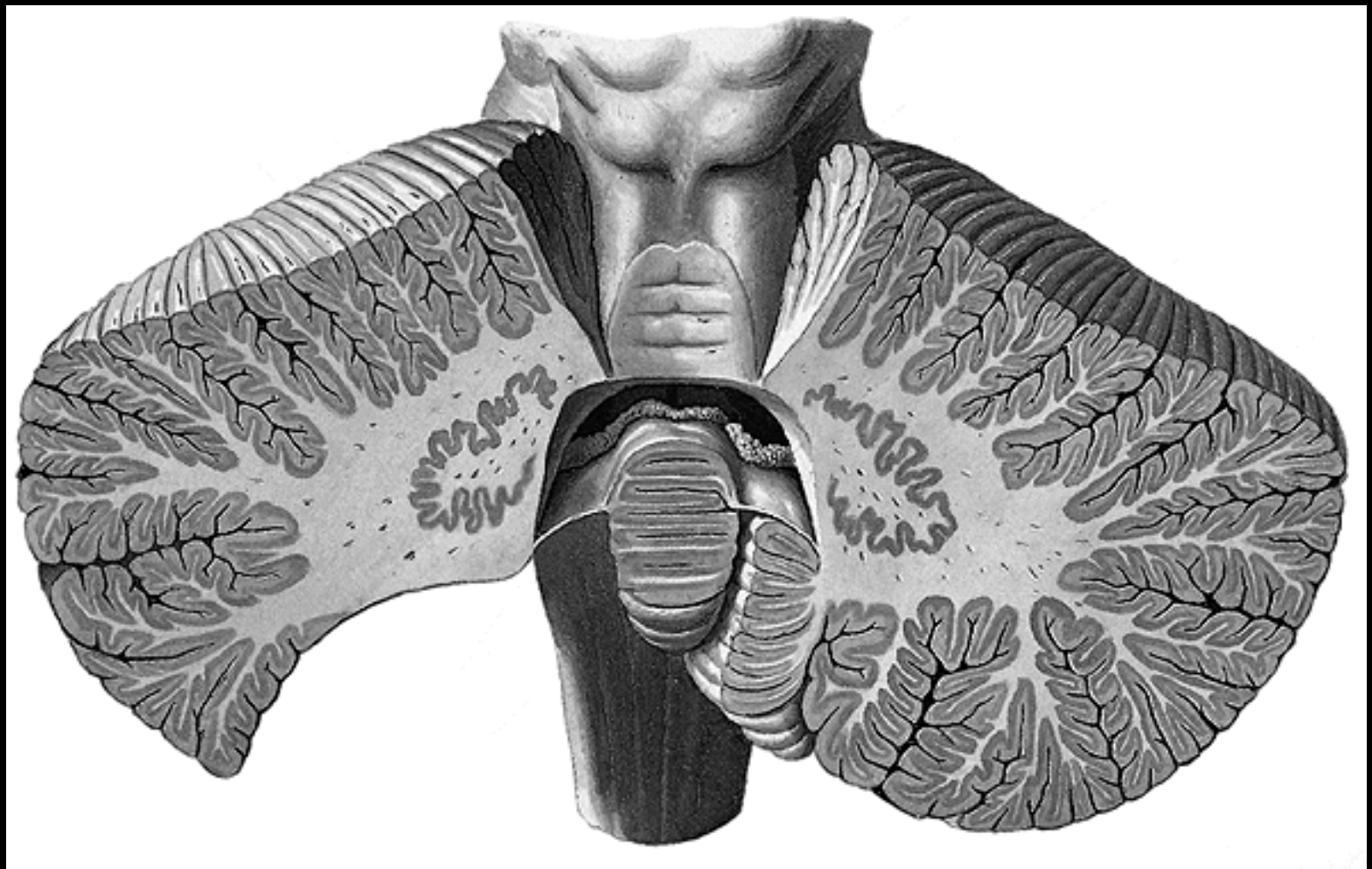
1 ncl. dentatus

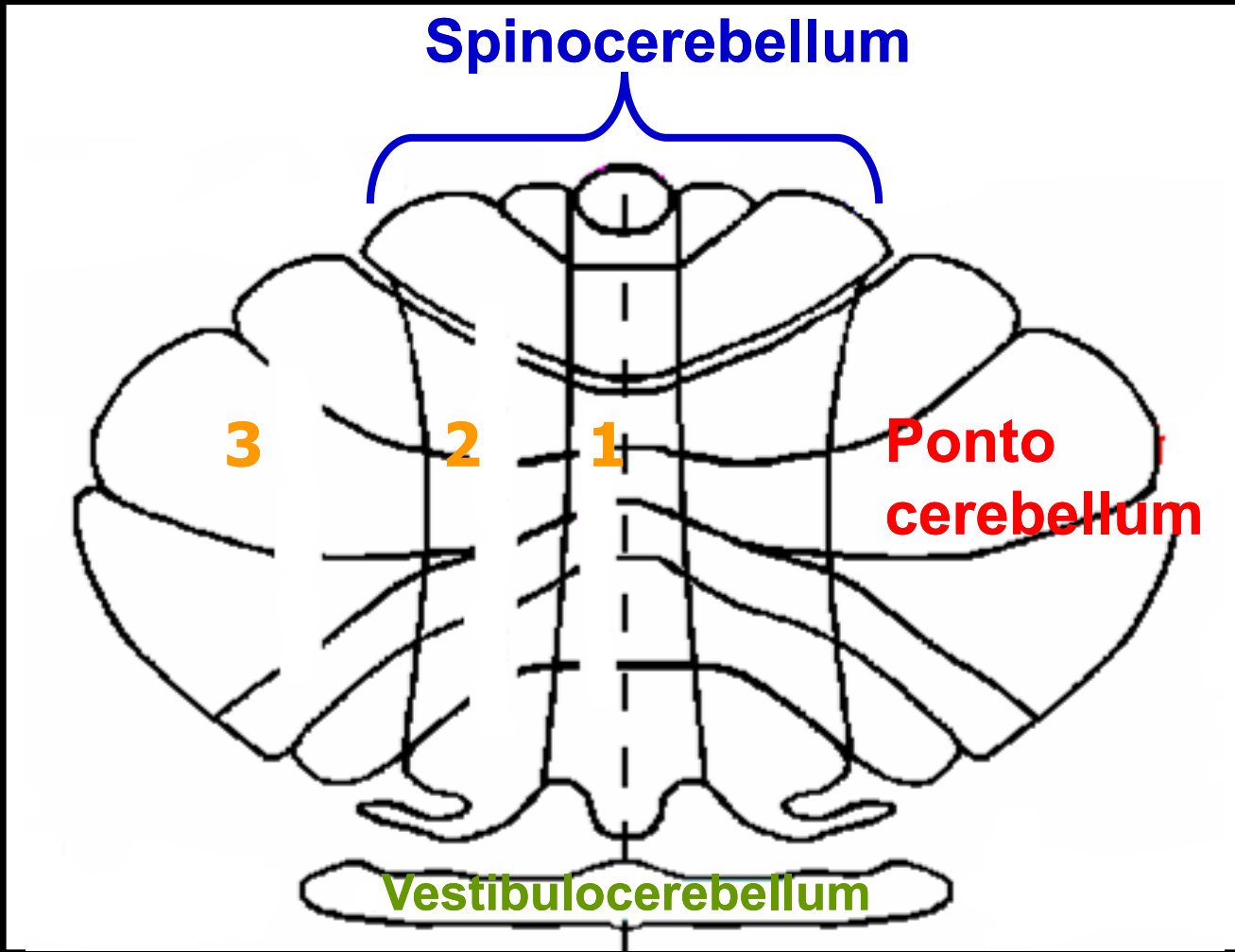
2 ncl. emboliformis

3 ncll. globosi

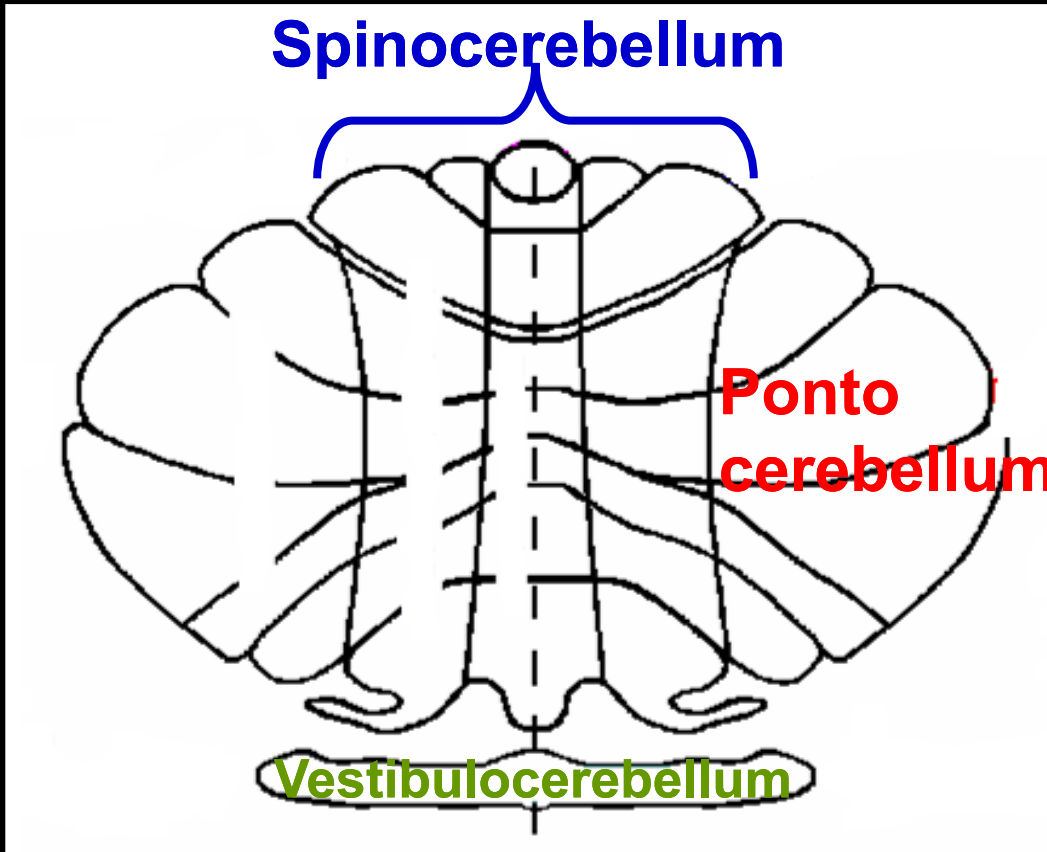
4 ncl. fastigii

Nuclei cerebelli





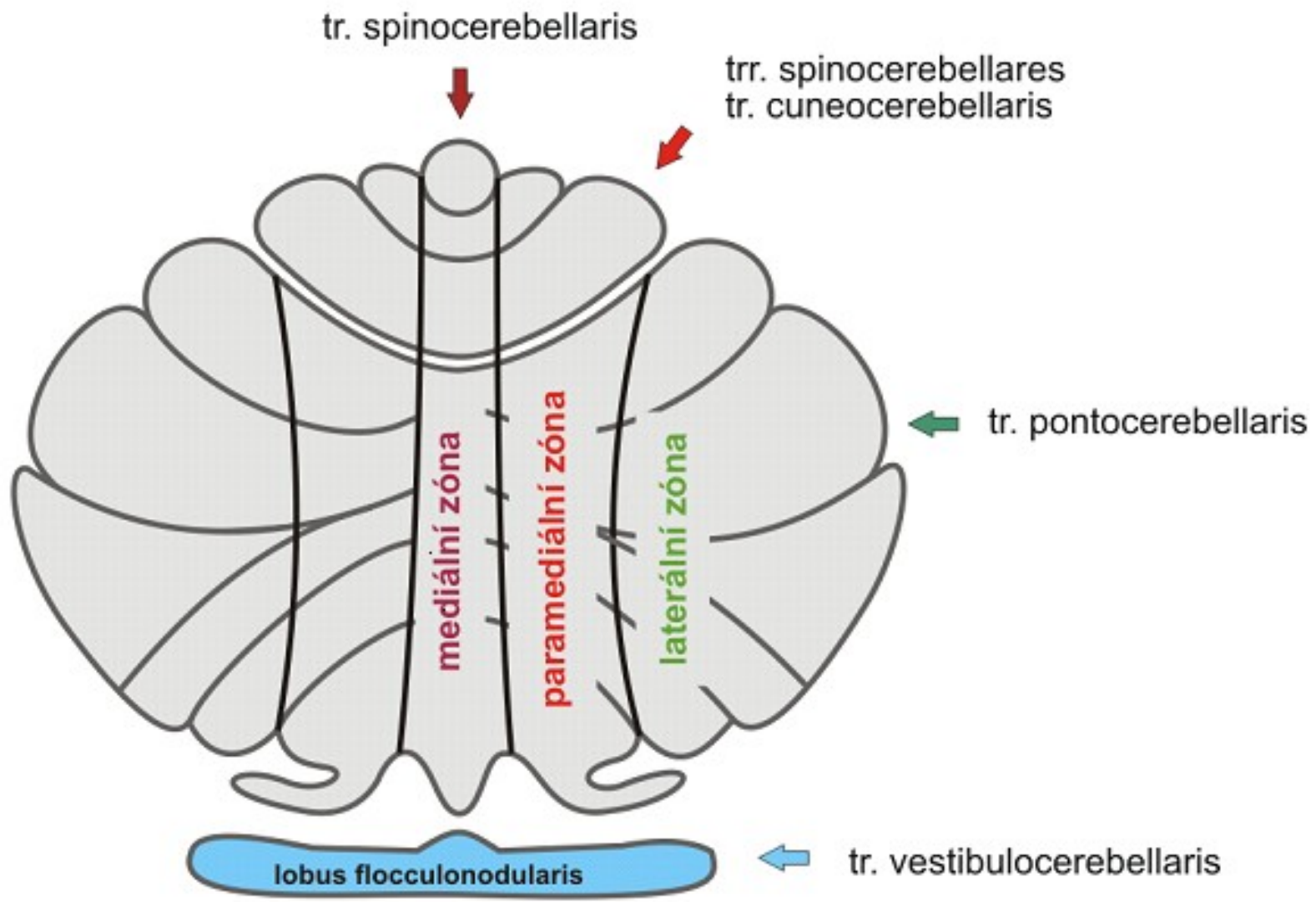
- 1** median zone
- 2** paramedian zone L. flocculonodularis
- 3** lateral zone



Vestibulocereb. ncl. vestibulares

Spinocereb. ncl. fastigii, emboliformes, globosi

Neocereb. ncl. dentatus



tr. spinocerebellaris

tr. spinocerebellares
tr. cuneocerebellaris

mediální zóna

paramediální zóna

laterální zóna

tr. pontocerebellaris

lobus flocculonodularis

tr. vestibulocerebellaris

Pedunculi cerebel. inf.

→ tr. sp-ce post., cuneo-ce, bulbo-ce, ve-ce, re-ce, olivo-ce

← from lobus flocculonodul. to ncll. vestibulares (tr. ce-ve), to RF of the brainstem (tr. ce-re)

Pedunculi cerebel. medii

→ tr. ponto-ce

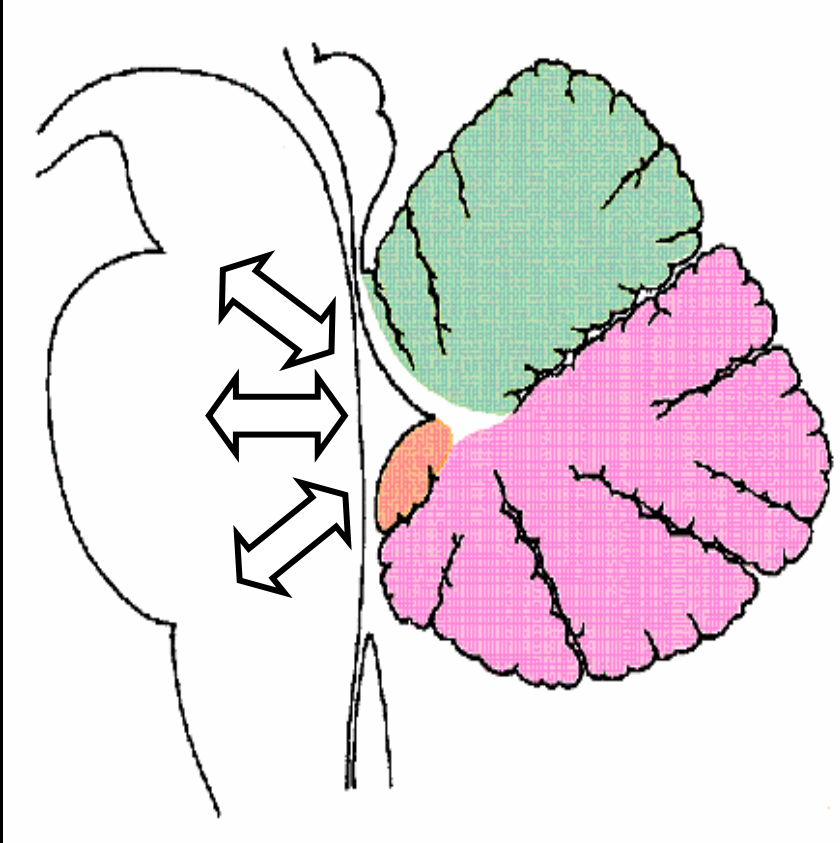
Pedunculi cerebel. sup.

→ tr. sp-ce ant., ru-ce a afferents from ncl. mesenceph. CN V

← from ncll. emboliformes, globosi and dentatus

Afferents : efferents = 40:1

Pathways of the cerebellum



Afferents to the cortex cerebelli

from vestib. labyrinth
from spinal cord and
brainstem

from cortex of the brain

Efferents from the nuclei
to brainstem, thalamus

Function of the cerebellum

archicerebellum > posture and eye movements

paleocerebellum > progressive movements (walking, swimming etc.)

neocerebellum > manipulative movements and speech

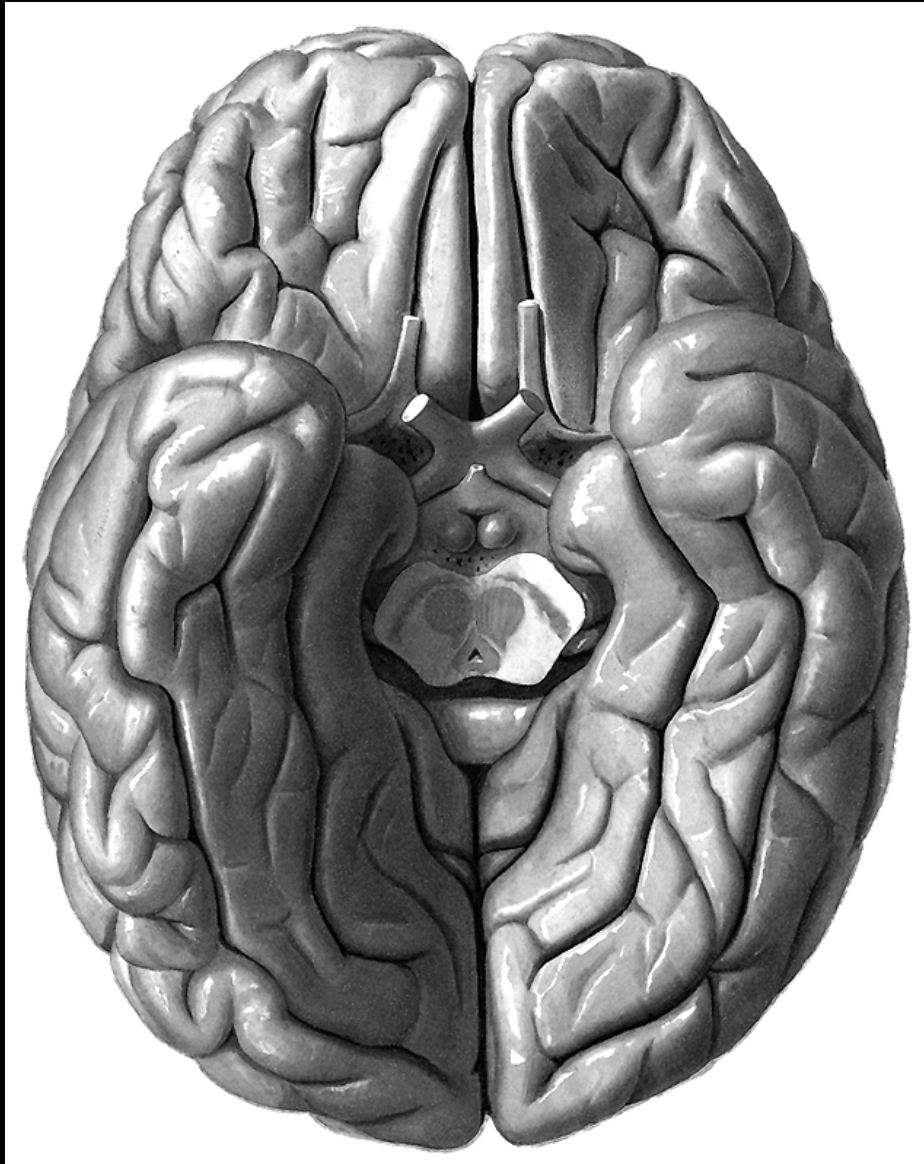
CEREBELLAR DISORDERS

Ataxia inability to stand upright without support

Dysmetria „overshooting“ - the hand may travel past the target

Dyssynergia incoordination

Adiadochokinesia inability to perform rapid alternating movements



DIENCEPHALON

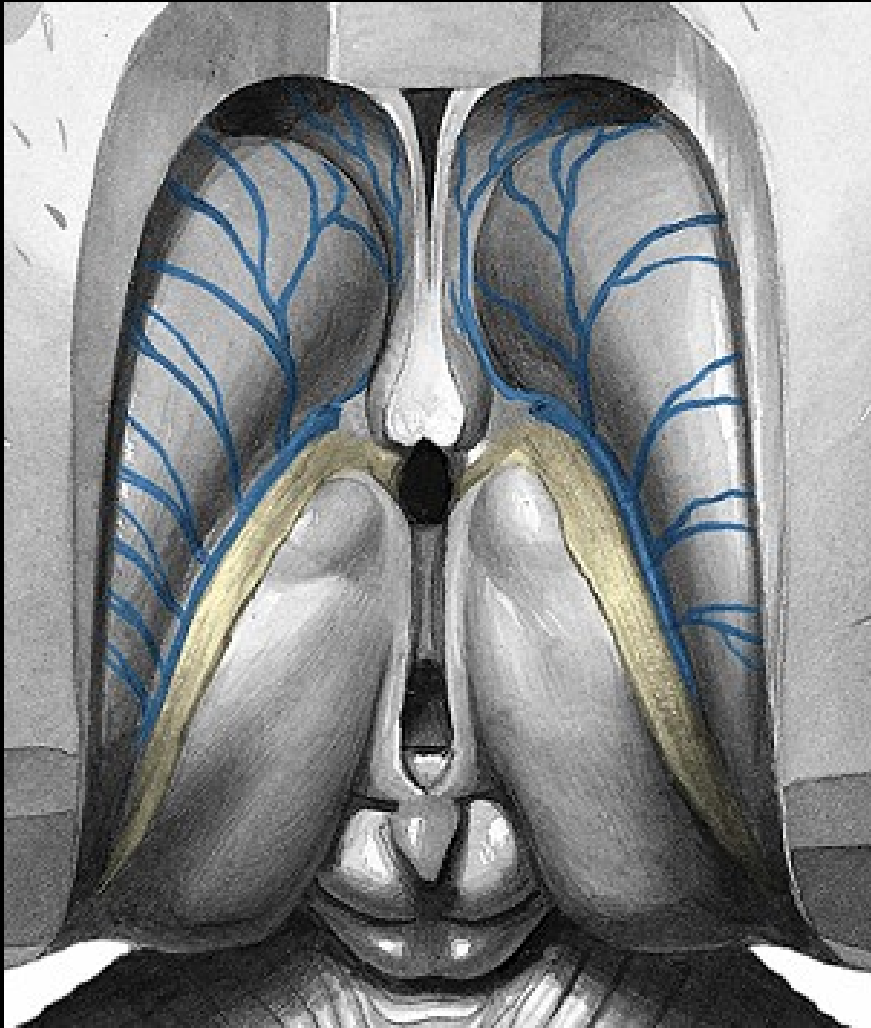
thalamus

(metathalamus)

epithalamus

subthalamus

hypothalamus



Thalamus

tuberculum ant.

pulvinar

stria medullaris

(tela choroidea ventr. III.)

fissura transversa cerebri

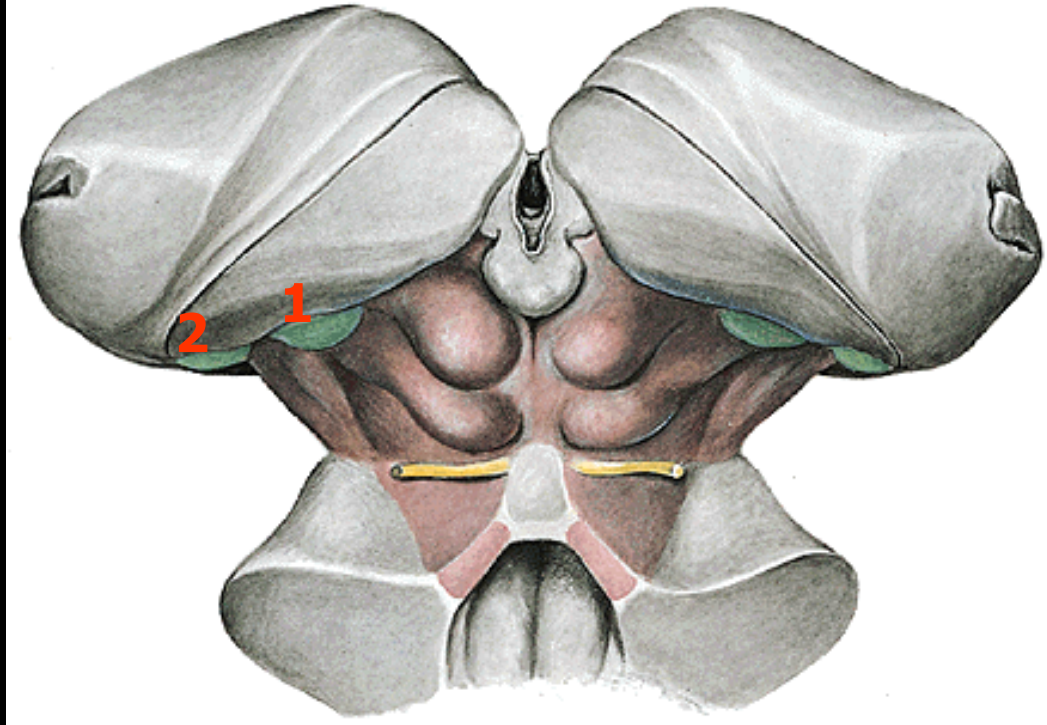
taenia choroidea

(tela choroidea ventr. lat.)

lamina affixa thalami

stria terminalis

Metathalamus

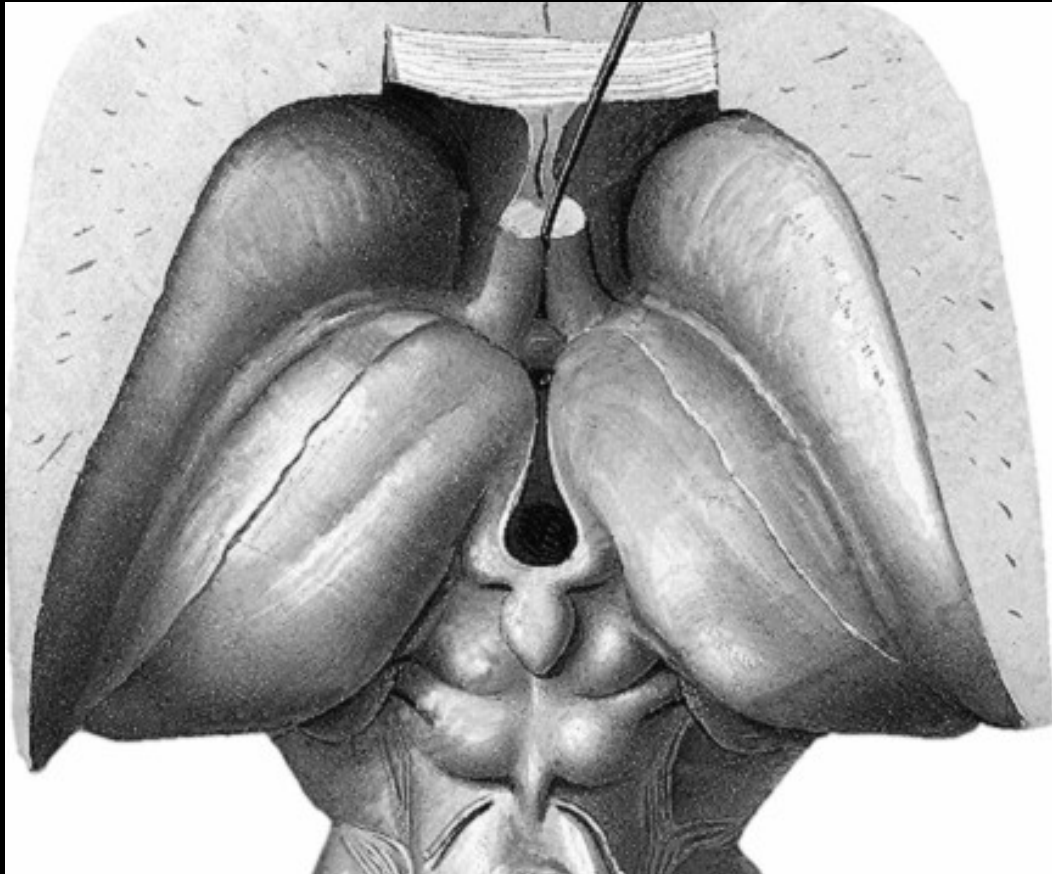


1 corp. geniculatum med.

brachium colliculi inf. – colliculus inf. **2**

corp. geniculatum lat.

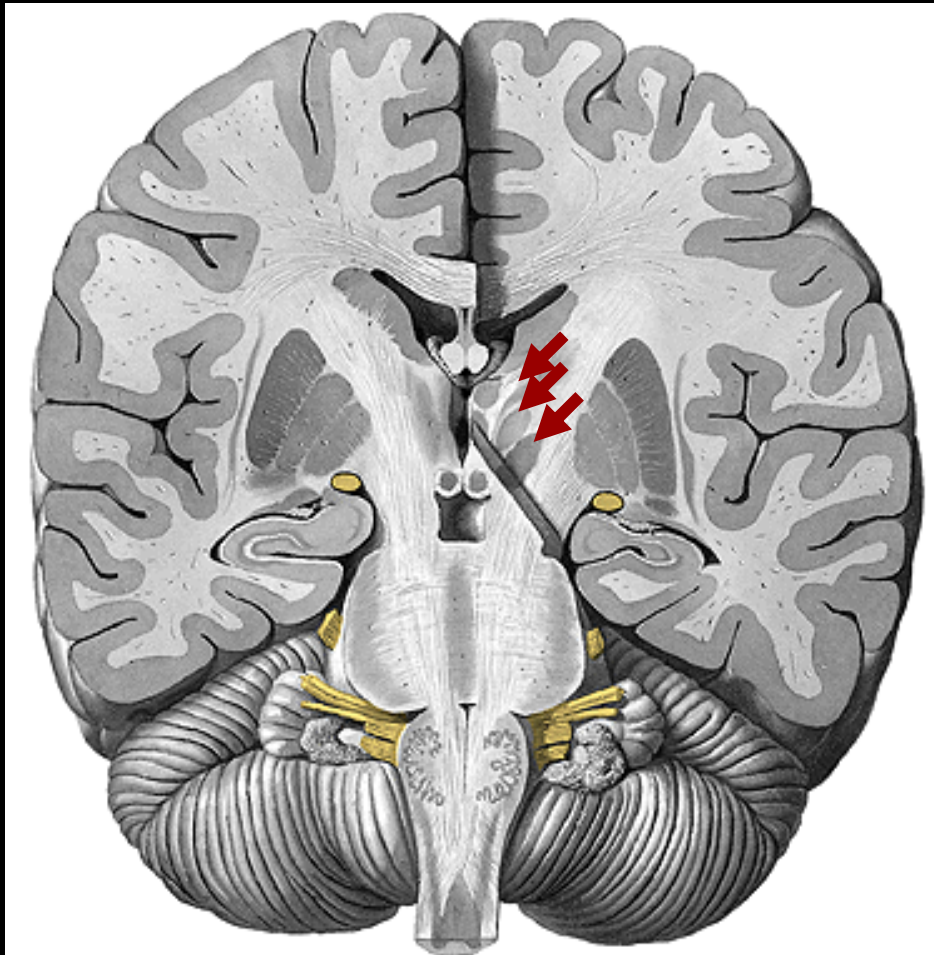
brachium colliculi sup. – colliculus sup.



Epithalamus

stria medullaris thalami
trigona habenularum
commissura habenularum et post.
corpus pineale (epiphysis cerebri)

Subthalamus



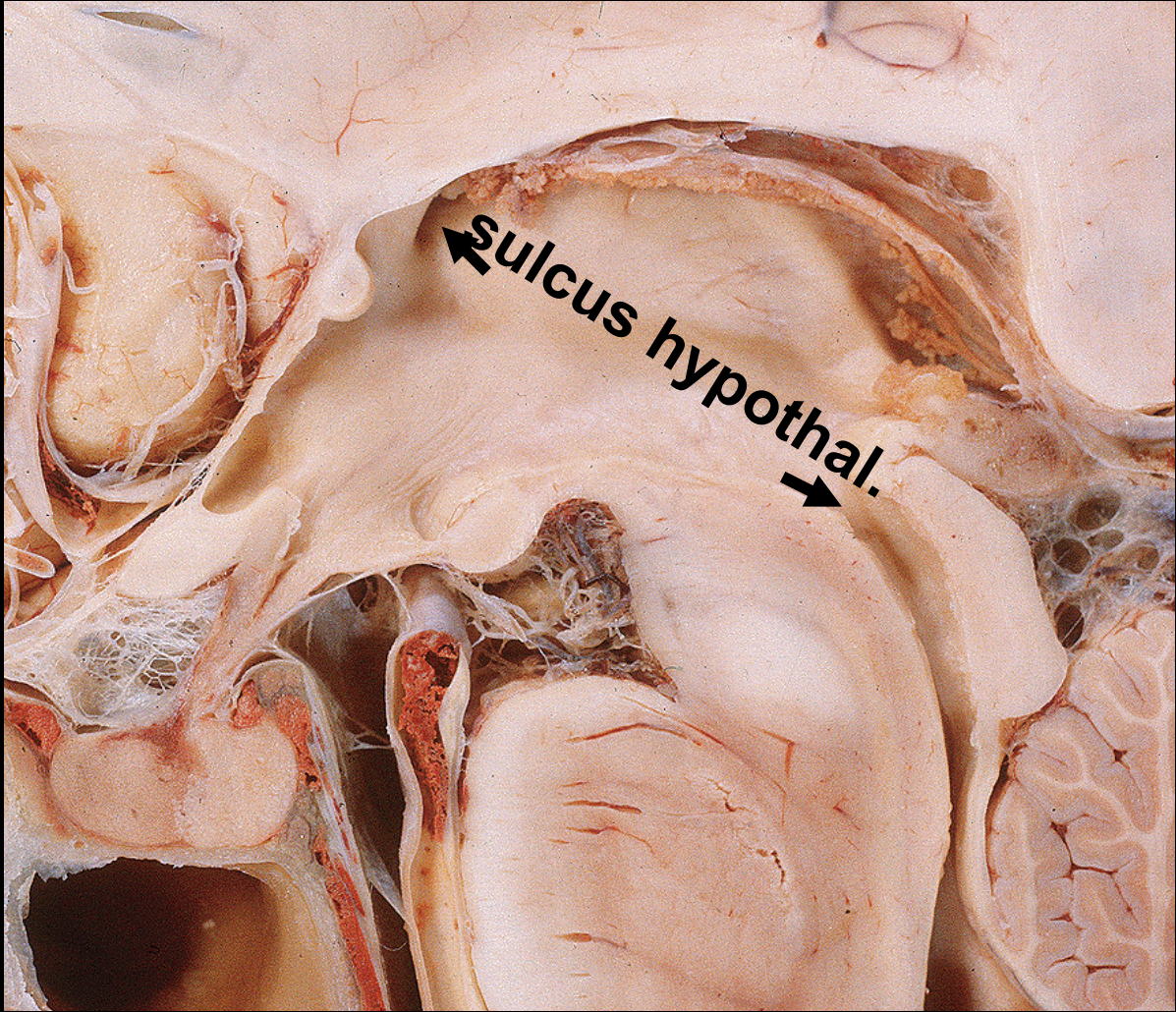
Involved in motor circuits

Grey matter

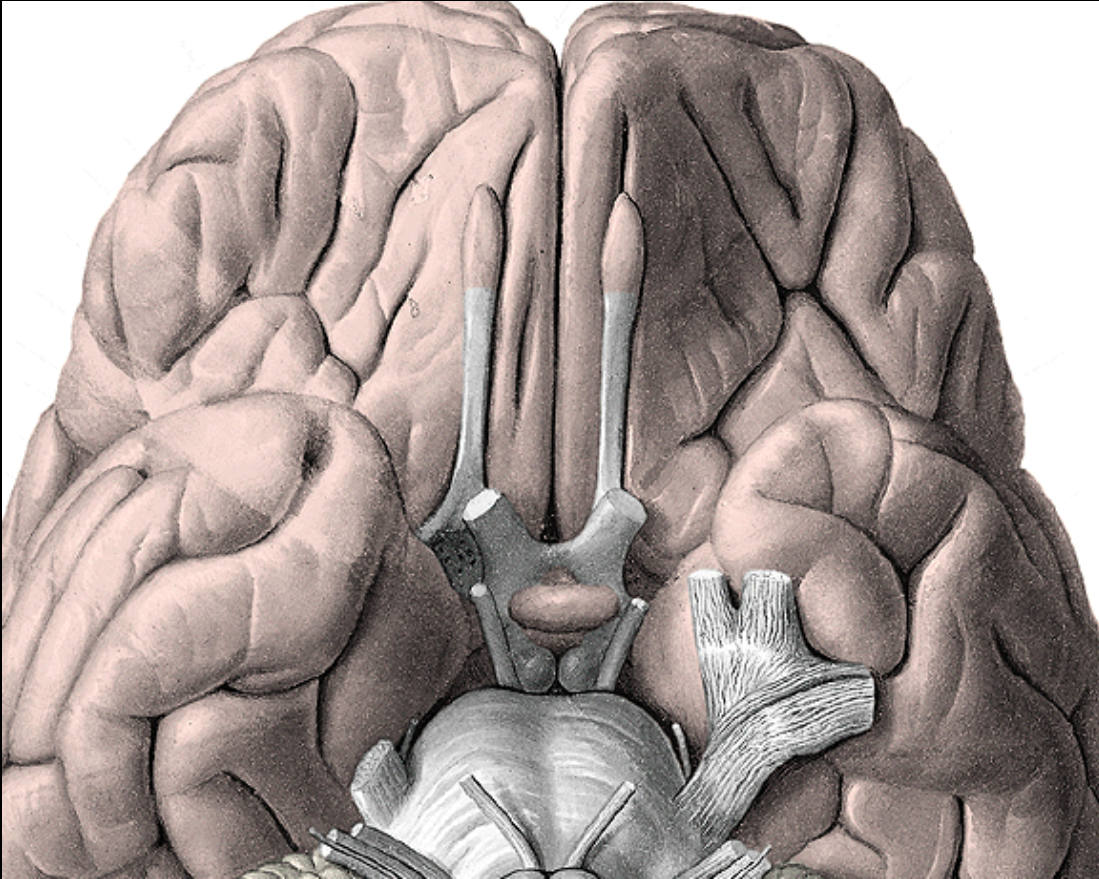
- ← zona incerta
- ← ncl. subthalamicus
- ← part of subst. nigra
part of globus pallidus

White matter

- Fasc. thalamicus
- Fasc. lenticularis
- Ansa lenticularis
- Fasc. subthalamicus



Hypothalamus

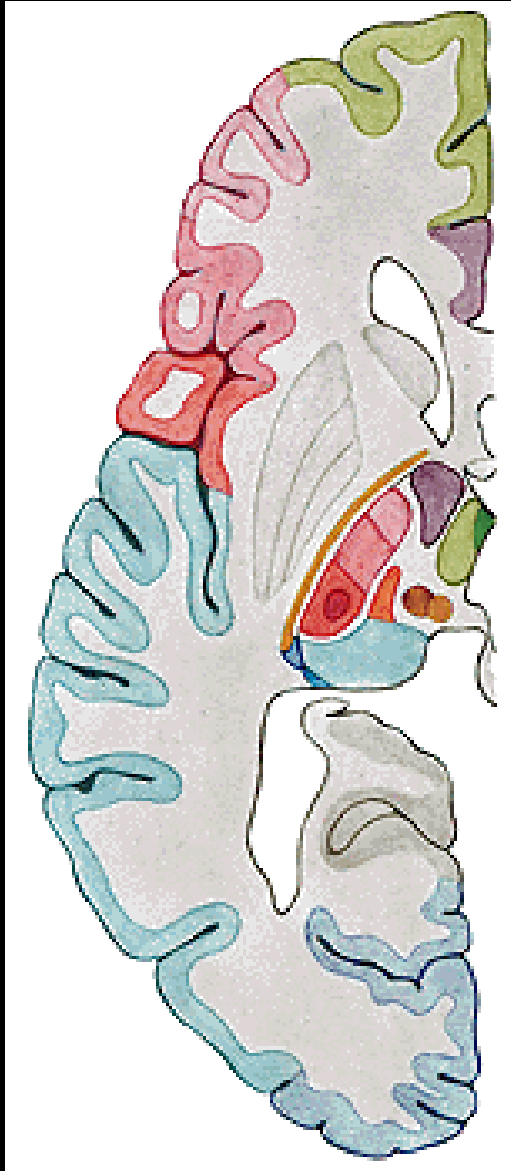


Corp. mamillaria

Infundibulum

Tuber cinereum

Hypophysis cerebri



THALAMUS

- ✓ relay station of ascending pathways
- ✓ involved in motor circuits
- ✓ reciprocal connections to the association areas of the cerebral cortex – functions related to memory, cognition, judgement, mood

Anterior group

A ncll. ant.

Lateral group

dorsal row

LD ncl. lat. dors.

LP ncl. lat. post.

ventral row

VA ncl. ventr. ant.

VL ncl. ventr. lat.

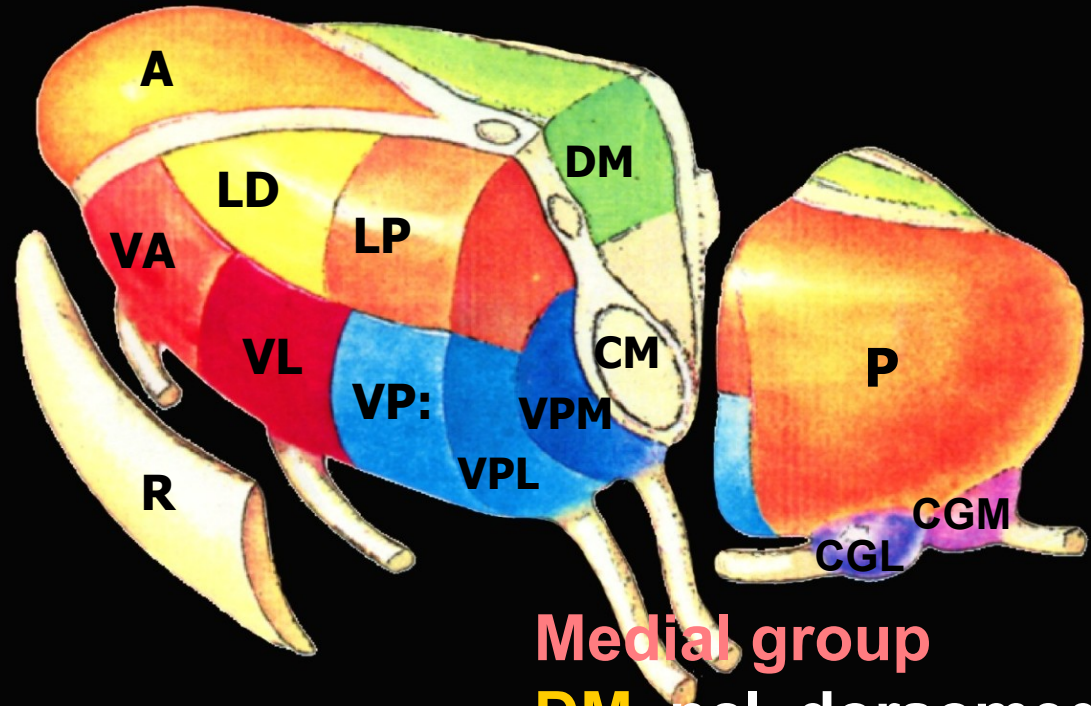
VP ncl. ventr. post.:

VPL ncl. ventr. post-lat

VPM ncl. ventr. post-med

CGL ncl. corporis gen. lat.

CGM ncl. corporis gen. med.



Medial group

DM ncl. dorsomed.

Posterior group

P ncll. pulvinari, post.

Intralaminar group

CM ncl. centromed.

R ncll. reticulares

Functional groups of nuclei

specific nuclei

somatosensory

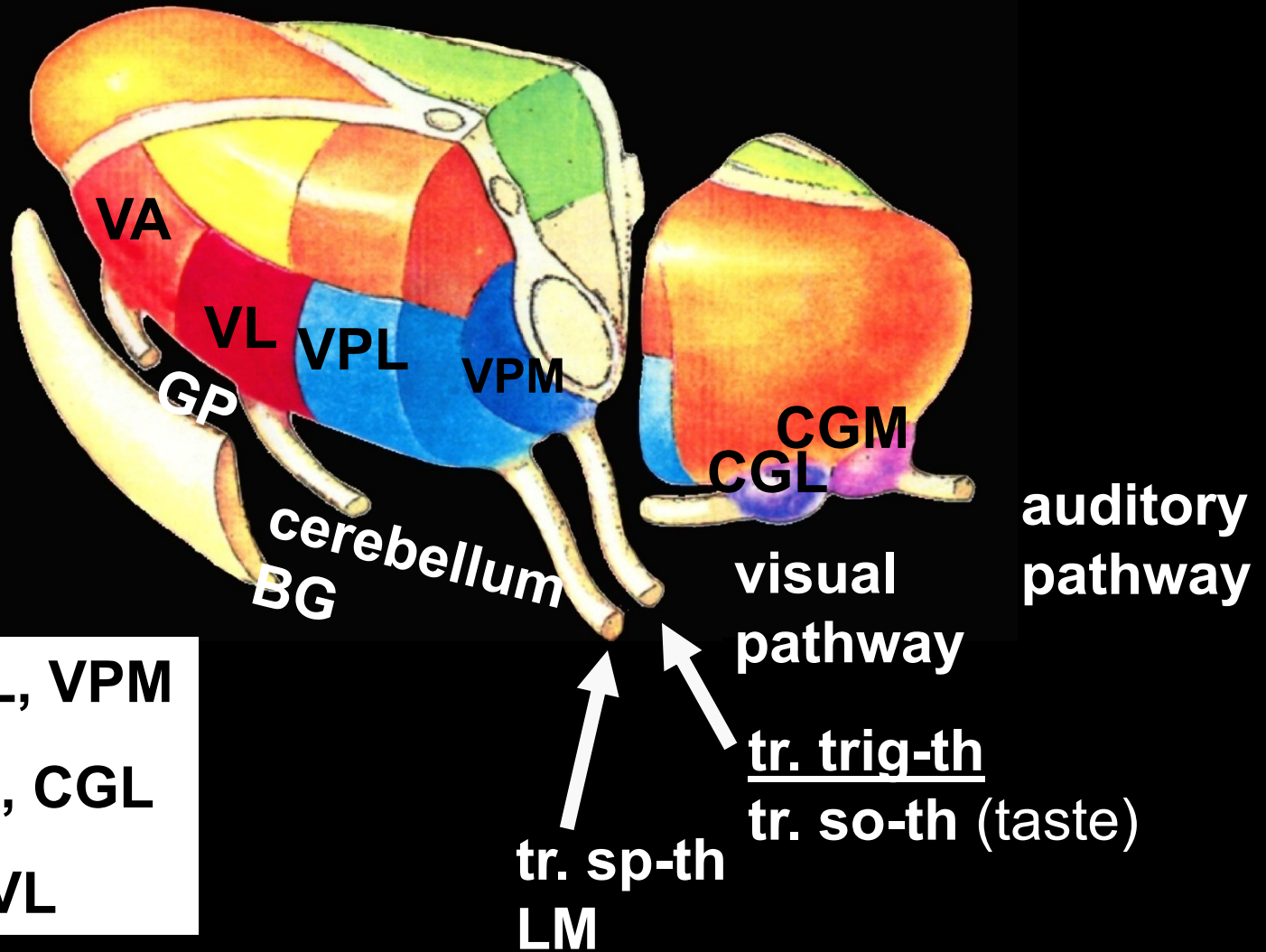
sensory

motor

non-specific nuclei

association nuclei

Specific nuclei

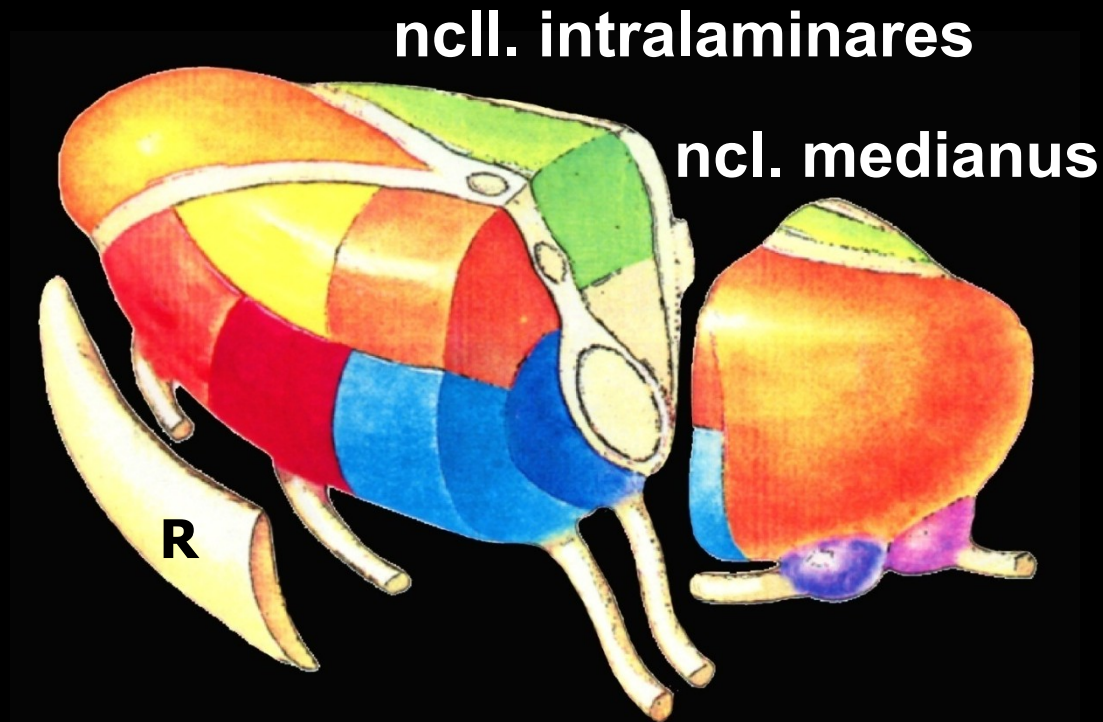


SS: VPL, VPM

S: CGM, CGL

M: VA, VL

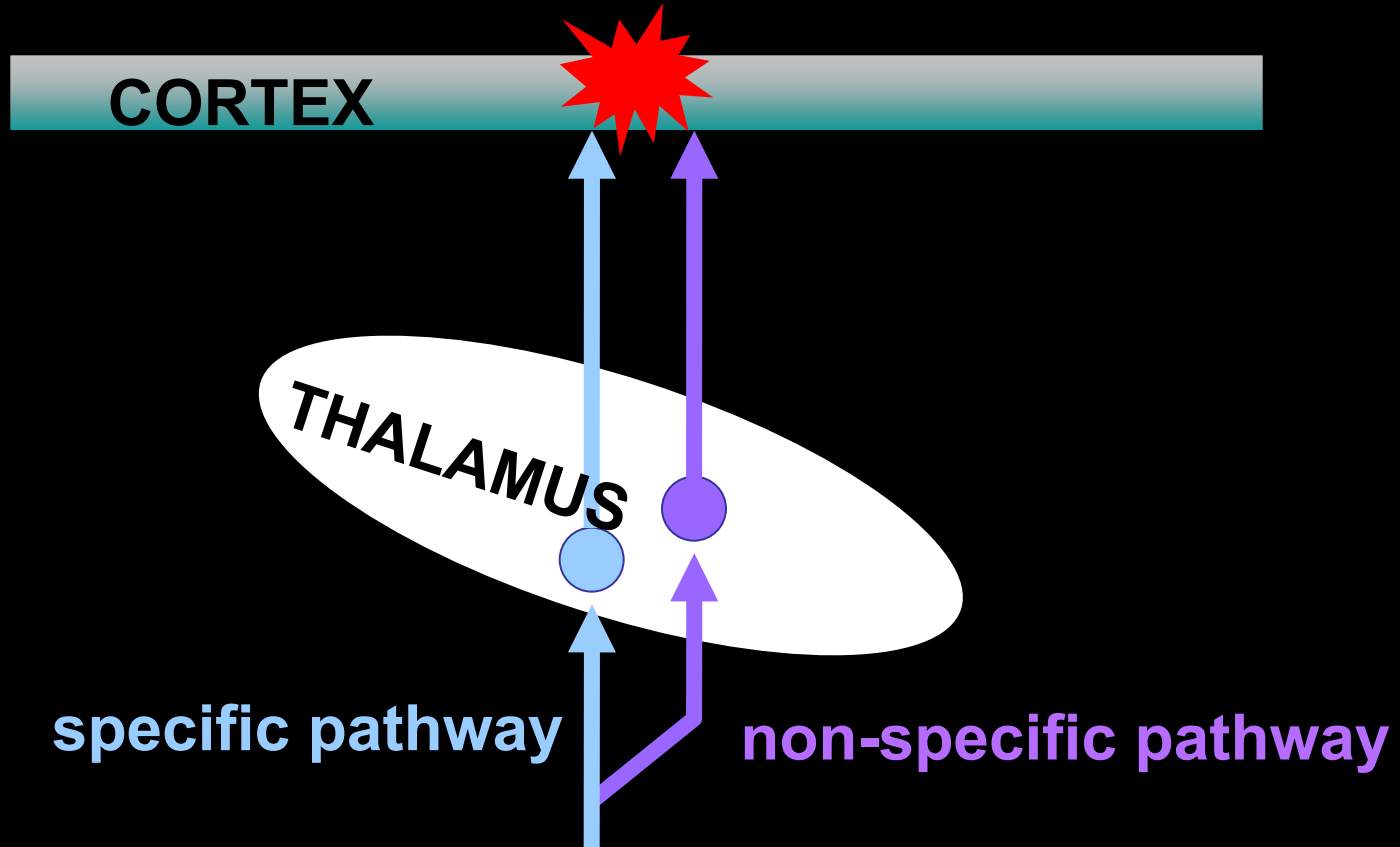
Non-specific nuclei



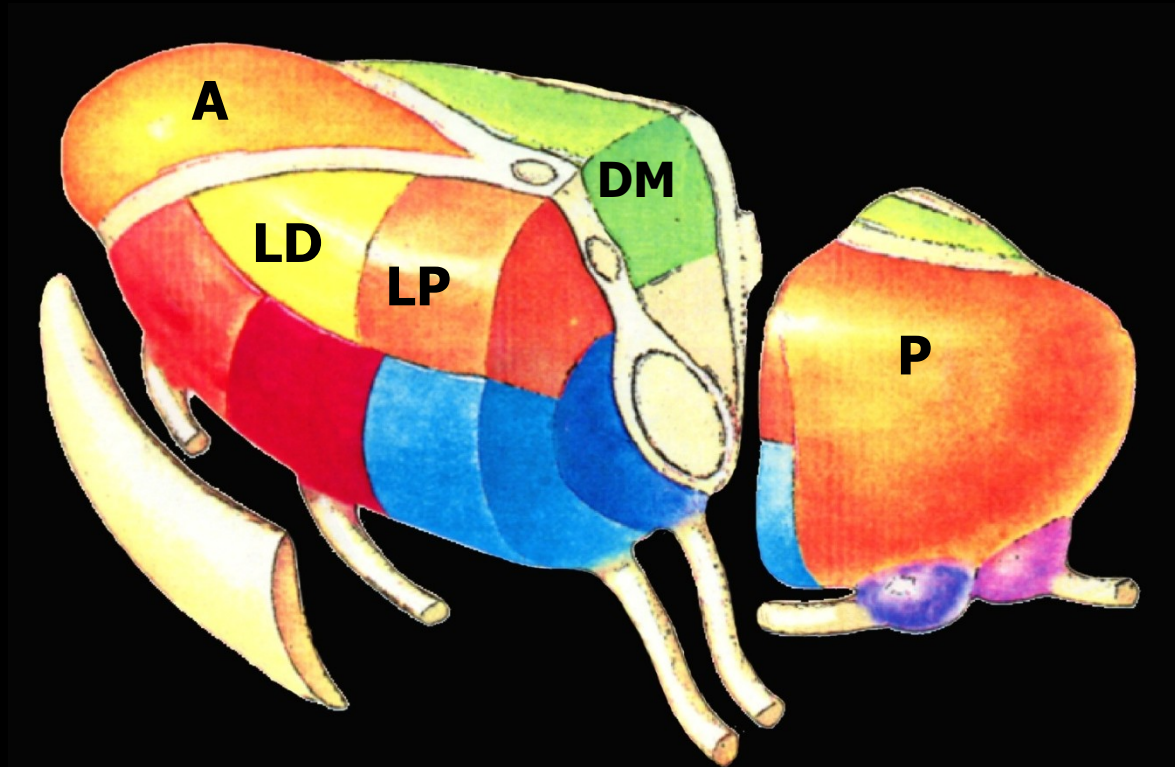
→ from FR of the brainstem and other thalamic nuclei

← to BG, thalamus, cortex (ARAS)

Projection to the cortex through specific and non-specific thalamic nuclei

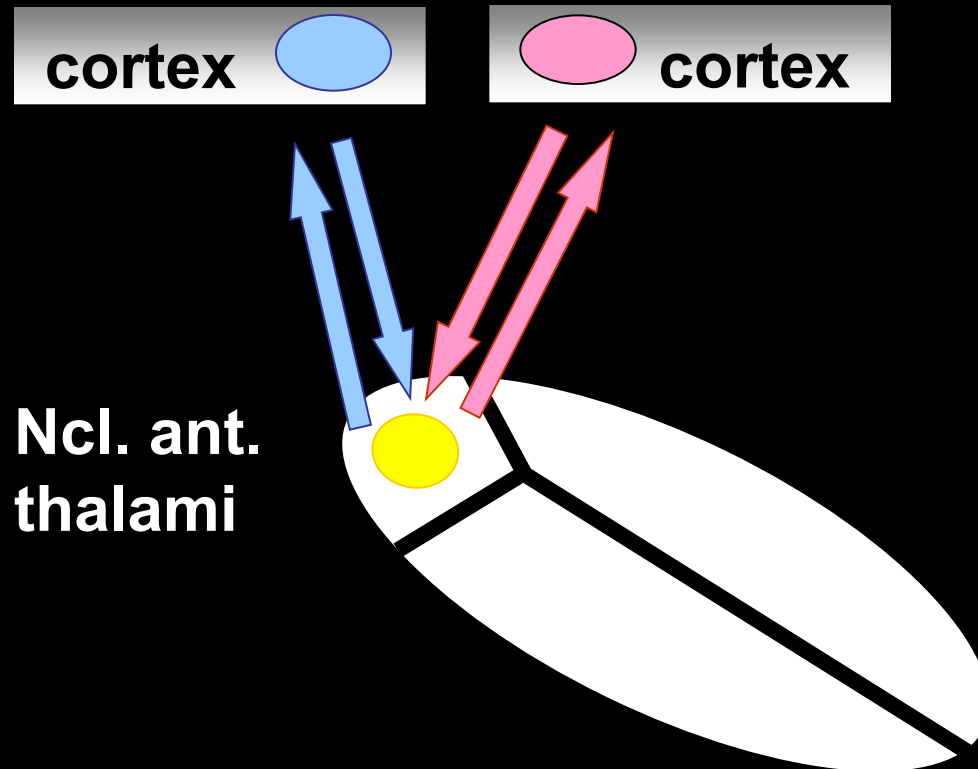


Association nuclei

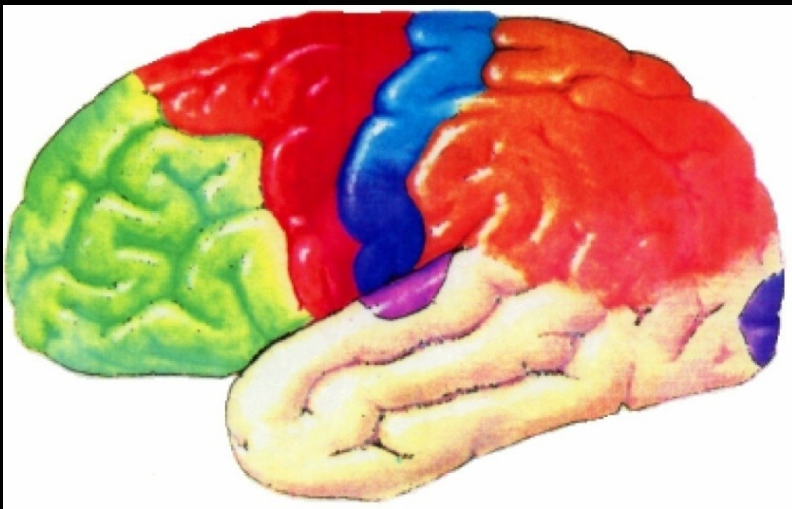


integration of GSA a SA inputs \Rightarrow to cortex
reciprocal connections with the association
cortex

Function of association nuclei



Interconnection of association areas of the cortex



Hypothalamus



Hypothalamus

control of:

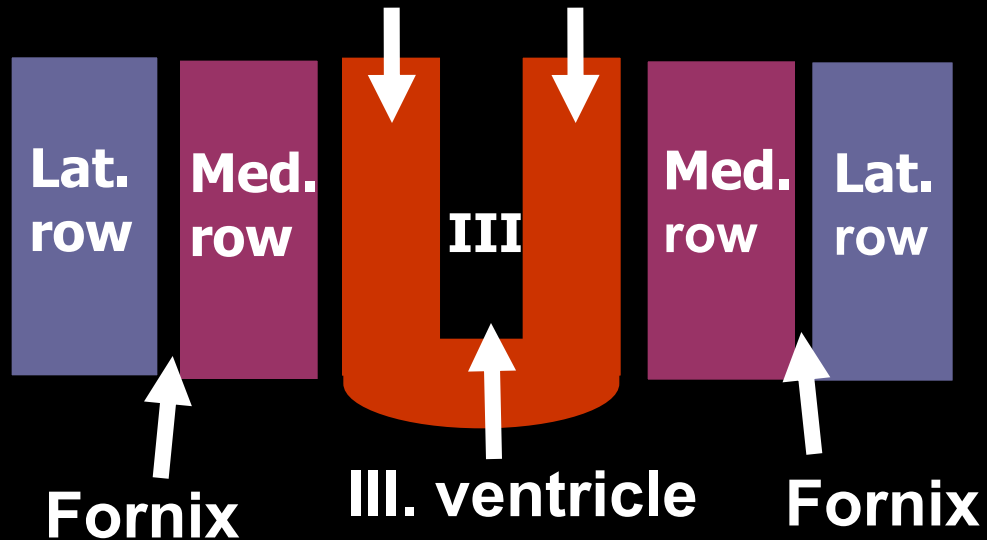
- ANS
- endocrine system

Function of the hypothalamus is related to:
control of vital functions that maintain **homeostasis**
control of emotions

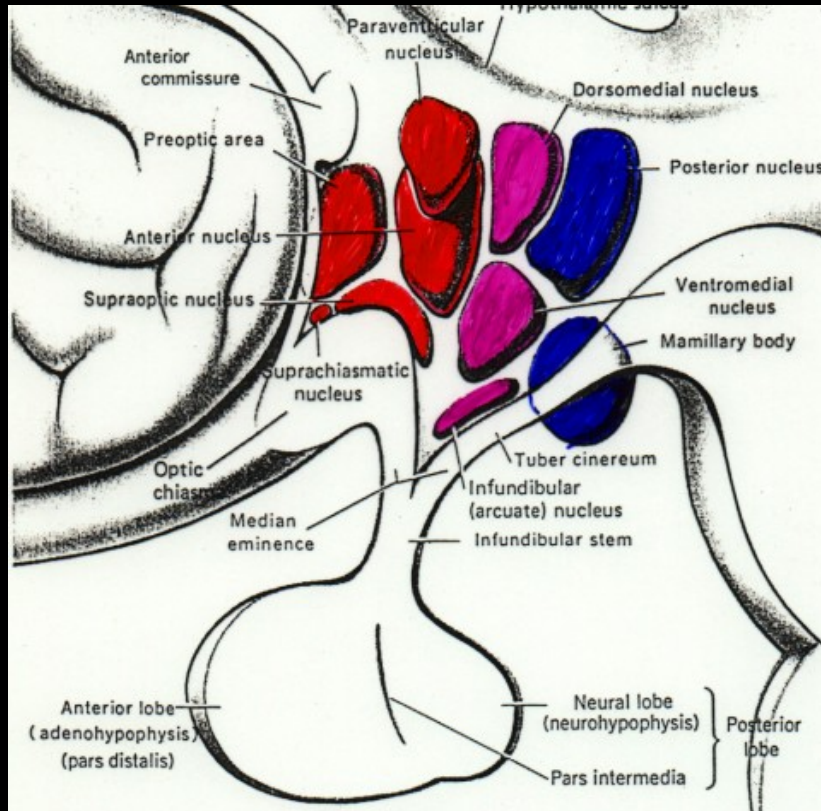


Hypothalamic nuclei at the frontal section

Periventricular row



ant. middle post.



Hypothalamic nuclei

- sagittal section

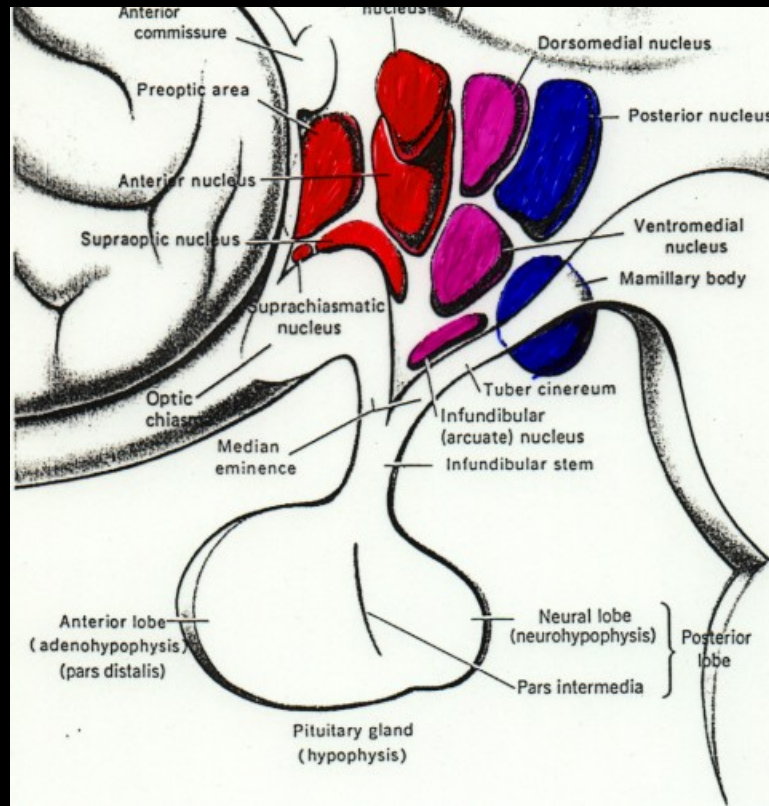
Anterior nuclei

Periventricular row:

ncl. suprachiasmatic.

Medial row:

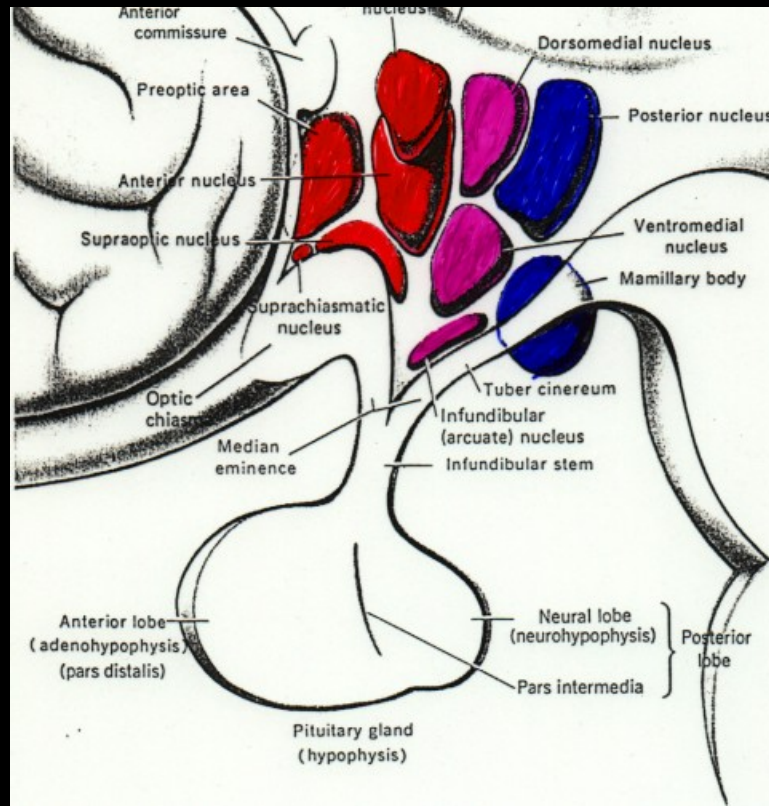
ncl. preopticus, ncl. supraopticus, ncl. ant., ncl. paraventr.



Middle nuclei

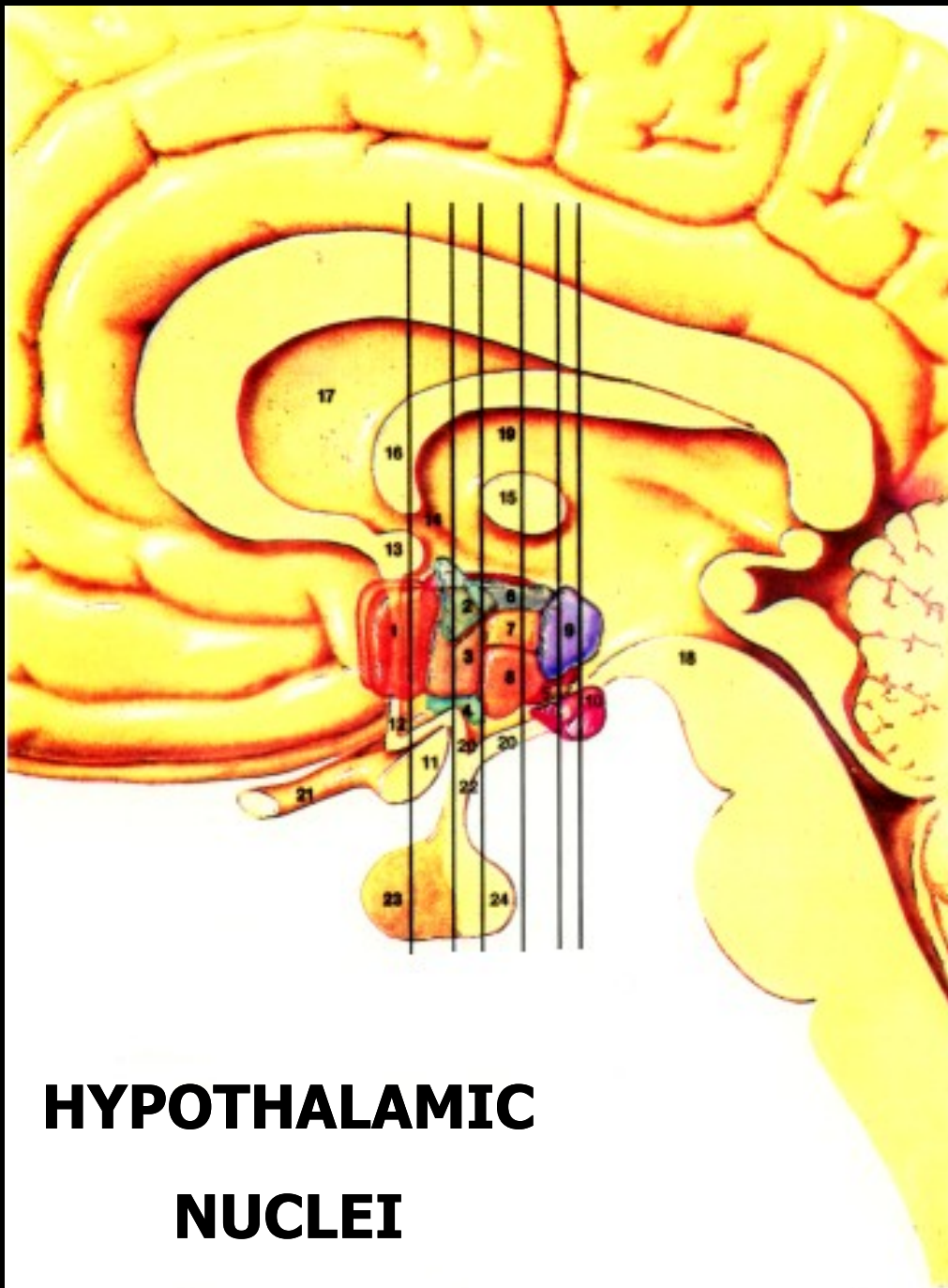
Periventricular row: **ncl. arcuatus**

Medial row: **ncl. ventromed. et ncl. dorsomed.**



Posterior nuclei

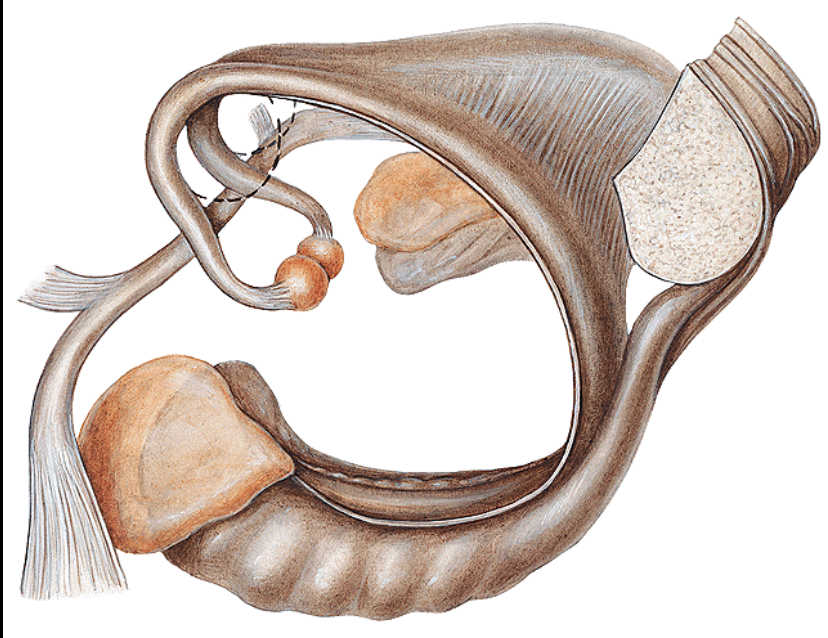
Periventricular + med. rows: **ncl. post. et ncl. mamillaris**



HYPOTHALAMIC NUCLEI

1. ncl. preopticus
2. ncl. paraventricularis
3. ant. hypoth. area
4. ncl. supraopticus
5. lat. hypoth. area
6. dorsal hypoth.
7. ncl. dorsomedialis
8. ncl. ventromed.
9. post. hypoth. area
10. corpus mammillaris
11. chiasma opticum
12. lamina terminalis
13. commissura ant.
14. sulcus hypothal.
15. adhesio interthal.
16. fornix
17. septum pellucidum
18. fossa interped.
19. thalamus
20. tuber cinereum
21. n. opticus
22. infundibulum
23. lobus ant.
24. lobus post.

White matter of the diencephalon

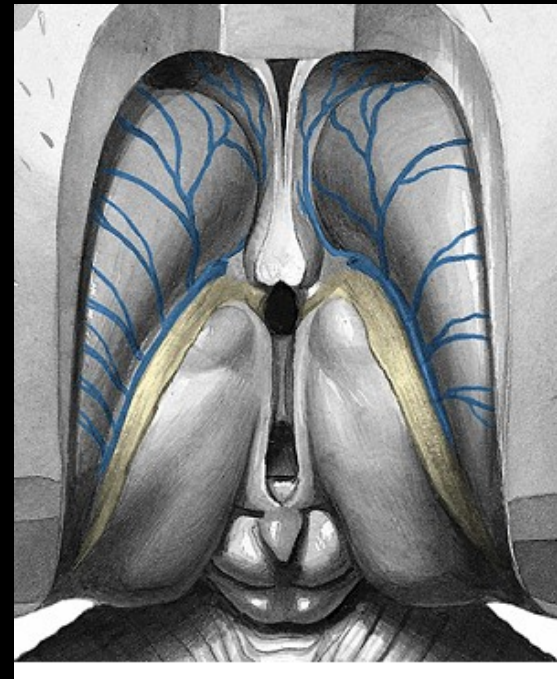


Fornix

Stria medullaris

Stria terminalis

FLD



Hypophysis cerebri



Lobus ant.
adenohypophysis

Pars intermedia

Lobus post.
neurohypophysis
(eminentia mediana
infundibular stalk
lobus post.)

Adenohypophysis

Secretion of hormones:

Thyrotropin

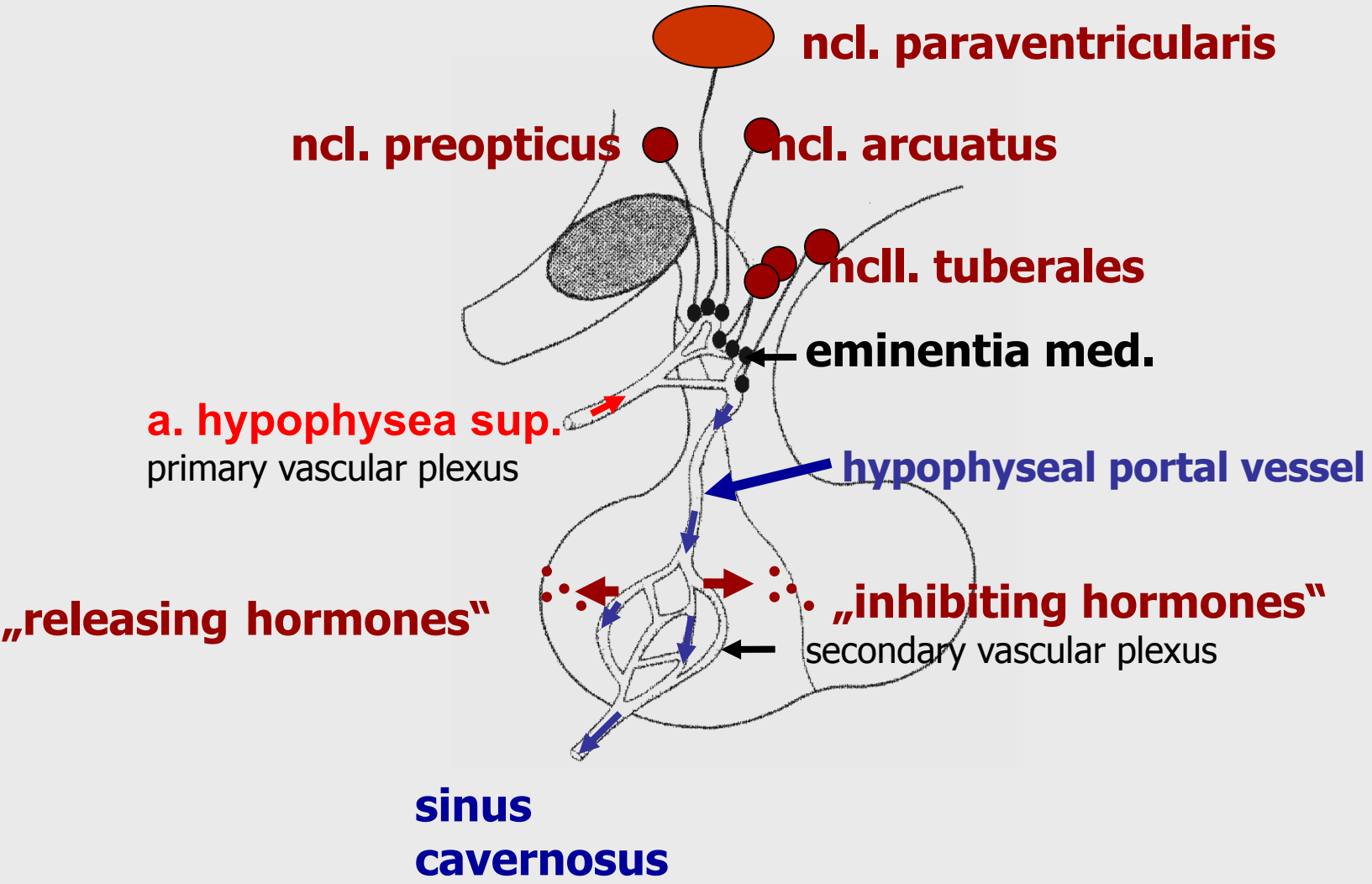
Gonadotropic

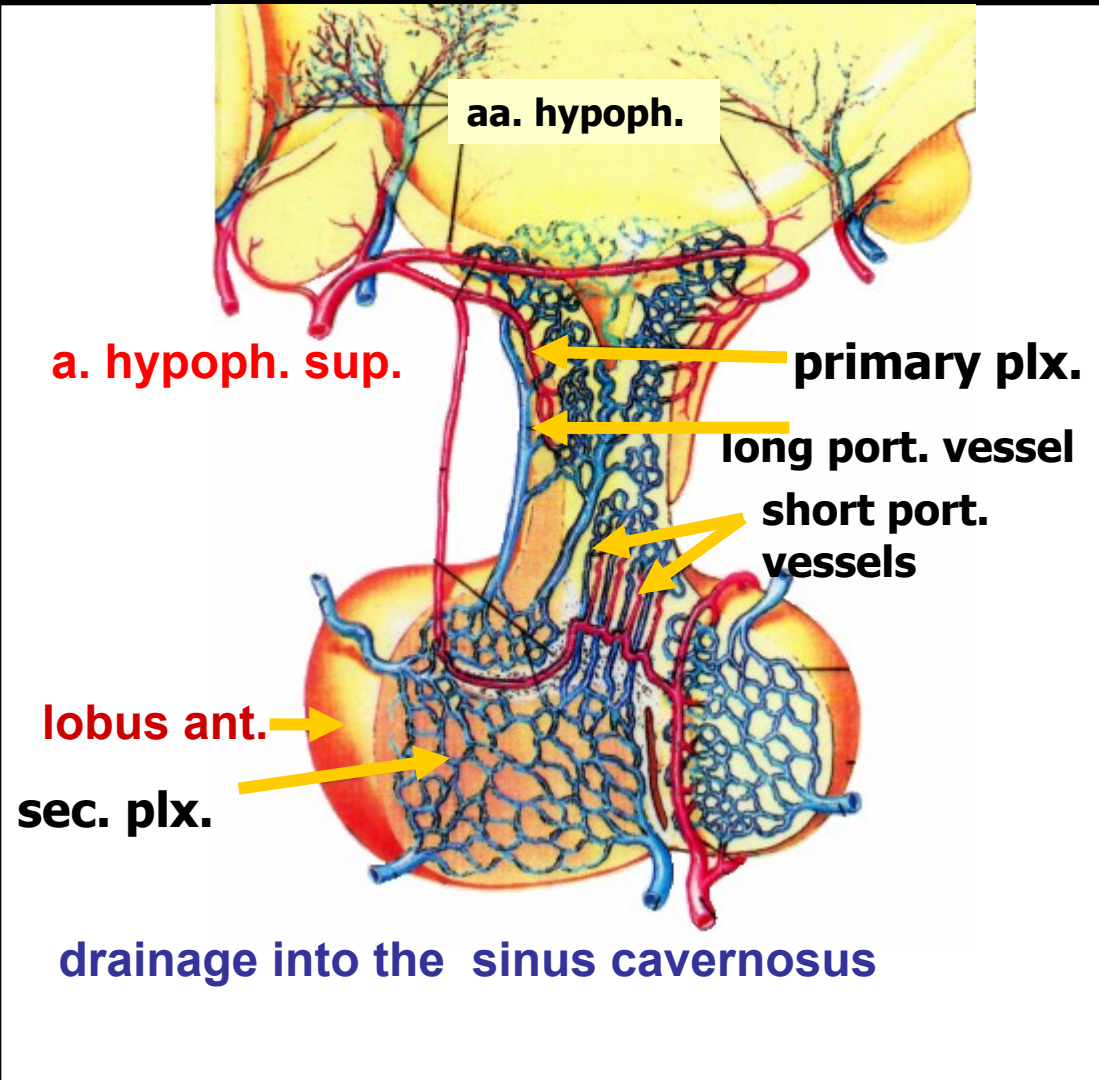
Growth

Adrenocorticotropic

cells of adenohypophysis are stimulated or inhibited by „**releasing**“ and „**inhibiting**“ factors (hypophysiotrophins) producing in some hypothalamic nuclei (**neurosecretion**)

- ✓ parvocellular neurons reach the median eminence (tuberoinfundibular tract)
- ✓ from the infundibulum are transported to the adenohypophysis by the **portal vessels**





Neurohypophysis

receives axons of magnocellular neuroendocrine cells of the supraoptic and paraventricular hypoth. nuclei

developmentally – part of diencephalon

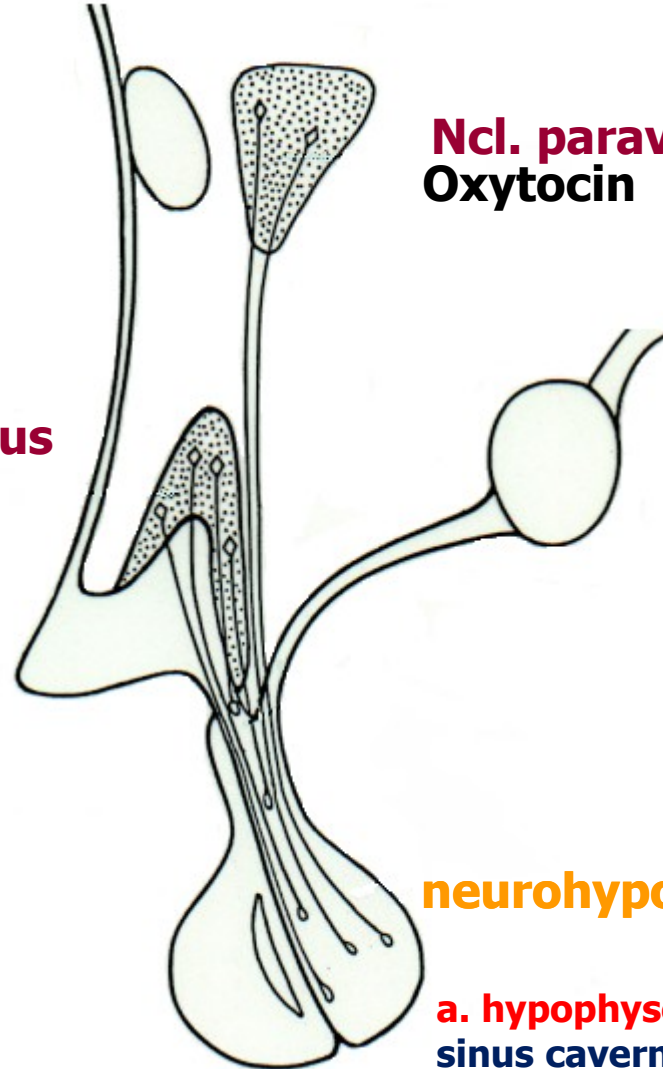
oxytocin and **ADH**

neuroendocrine cells reach the posterior lobe of the hypophysis through **tr. hypothalamo-hypophysialis**

Tr. hypoth.-hypophysialis

Ncl. supraopticus
Antidiuretic h.
(Vasopresin)

Ncl. paraventricularis
Oxytocin



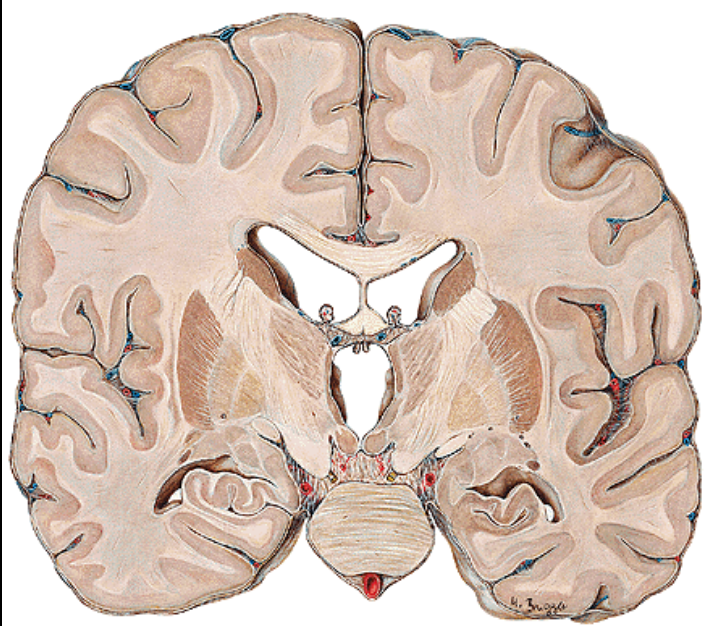
neurohypophysis

a. hypophyseus inf.
sinus cavernosus

Telencephalon



Structure of telencephalon

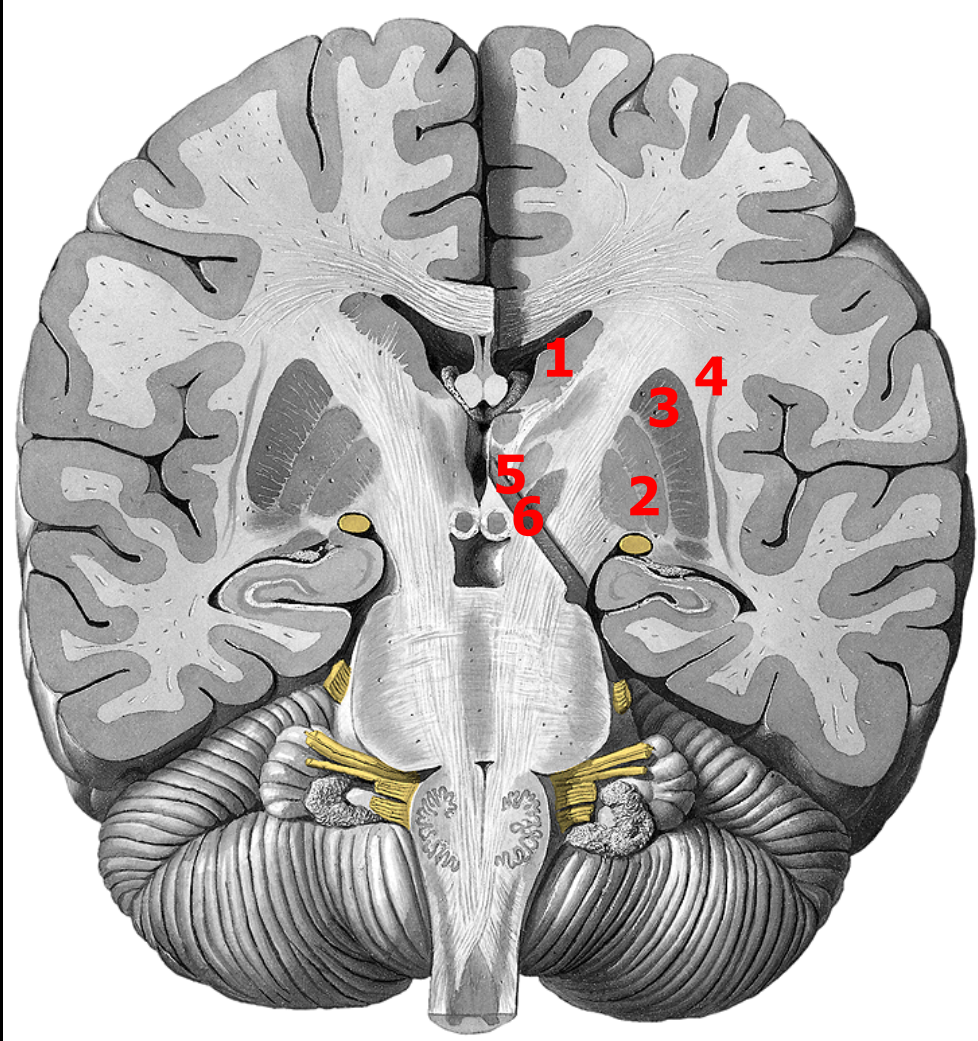


Gray matter
Basal ganglia
Cortex



White matter -
pathways
Projection
Commissural
Association

Basal ganglia



- 1 ncl. caudatus
- 2 globus pallidus
- 3 putamen
- 4 claustrum
corp. amygdaloideum

Functionally

- 5 ncl. subthalamicus
- 6 substantia nigra

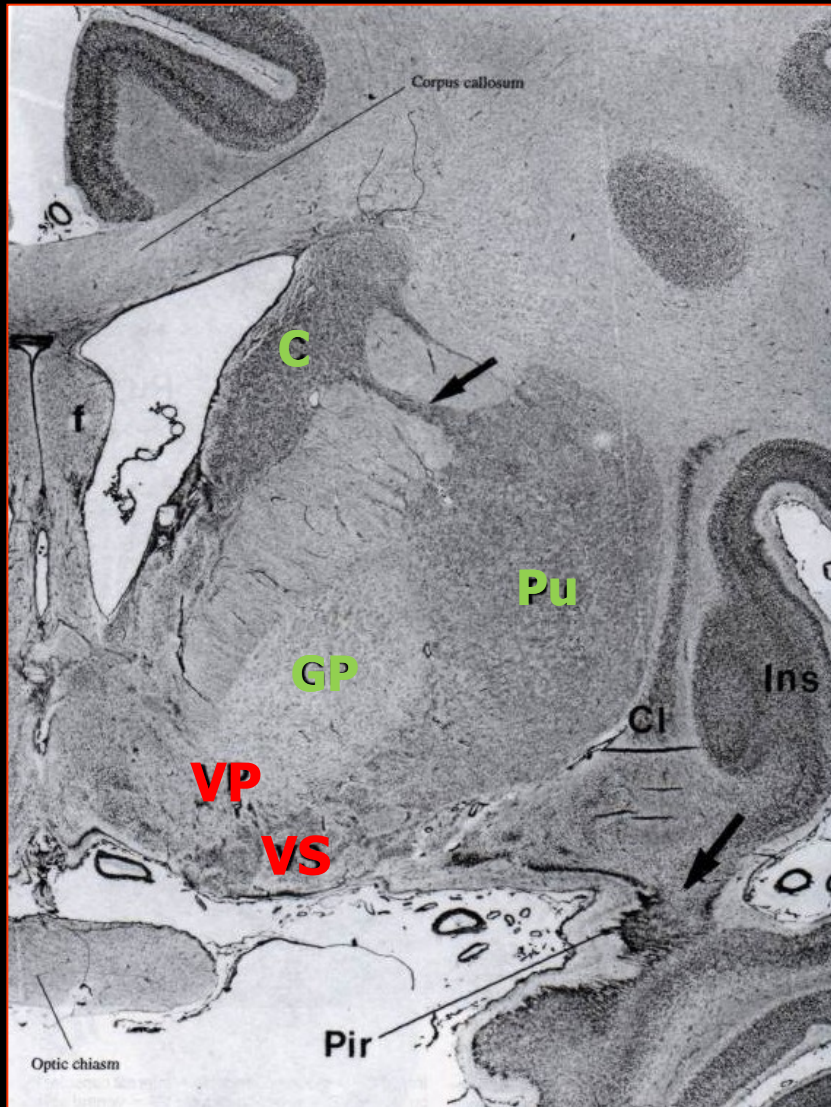
globus pallidus +
putamen = **ncl. lentif.**
ncl. caudatus + putamen
= **corpus striatum**

Development of BG

Palleostriatum (pallidum) = globus pallidus
lat. + med. segment – dorsal pallidum
ventral pallidum

Neostriatum (striatum)
ncl. caudatus, putamen – dorsal striatum
ncl. accumbens – ventral striatum

Archistriatum
corpus amygdaloideum

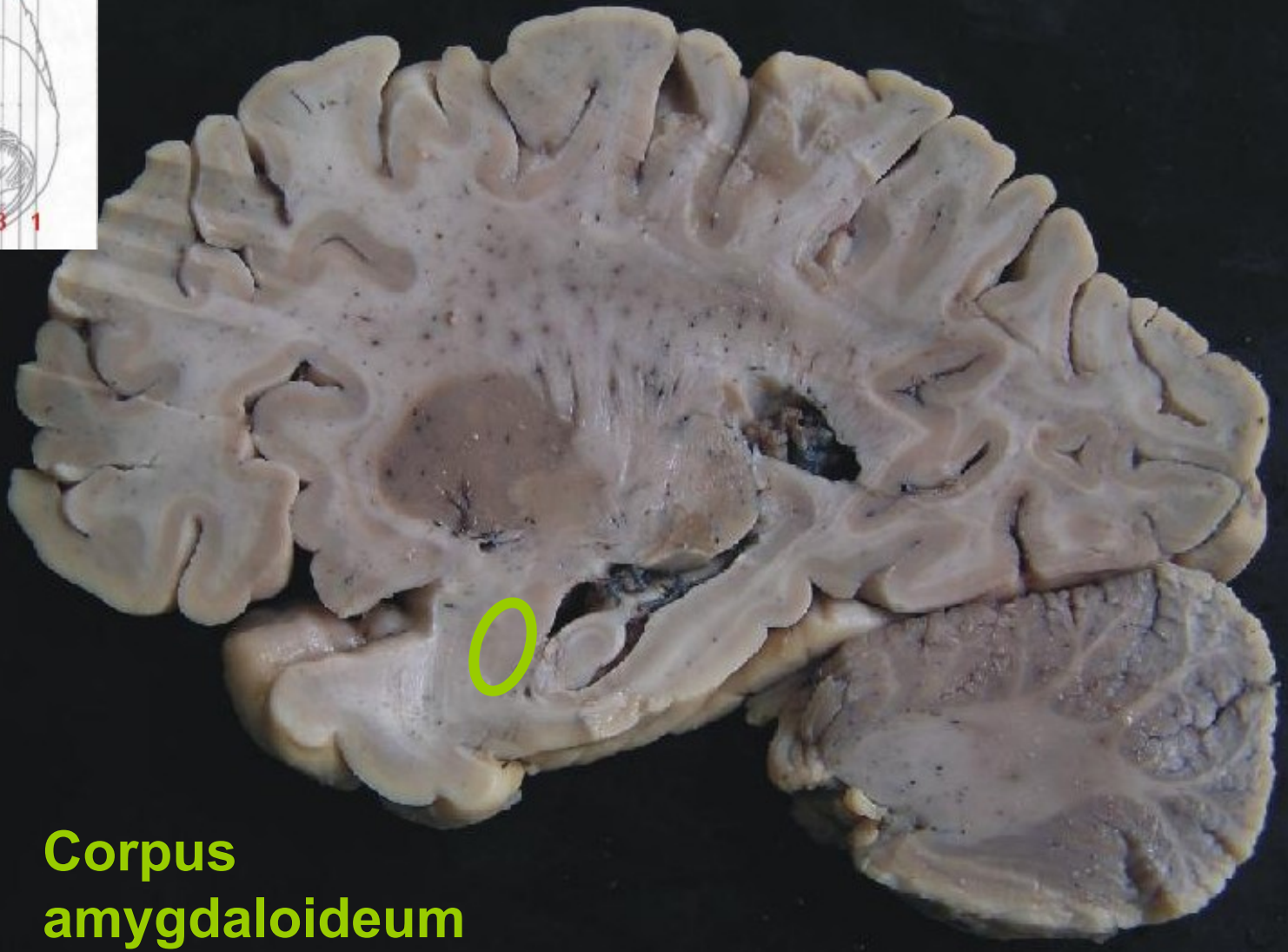
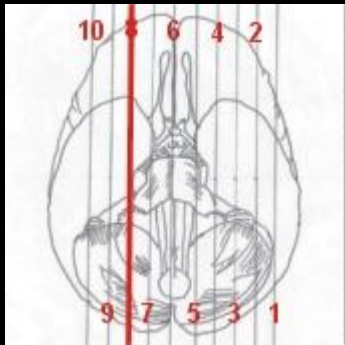


Ncl caudatus + putamen
= dorsal striatum

Globus pallidus
= dorsal pallidum

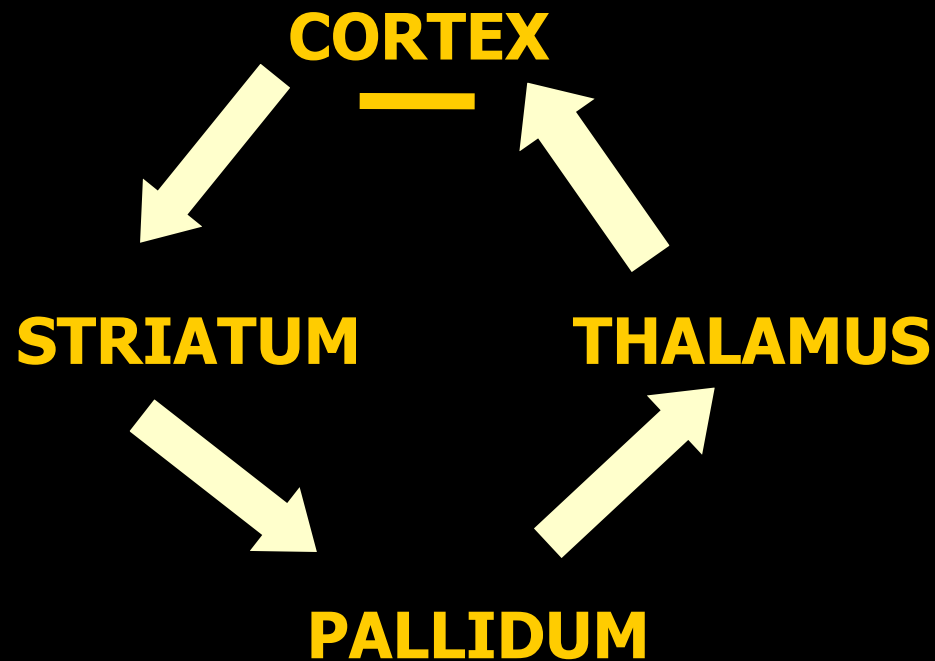
VS = ventr. striatum (ncl.
accumbens septi)

VP = ventral pallidum
(ncl. basalis Meynerti)



**Corpus
amygdaloideum**

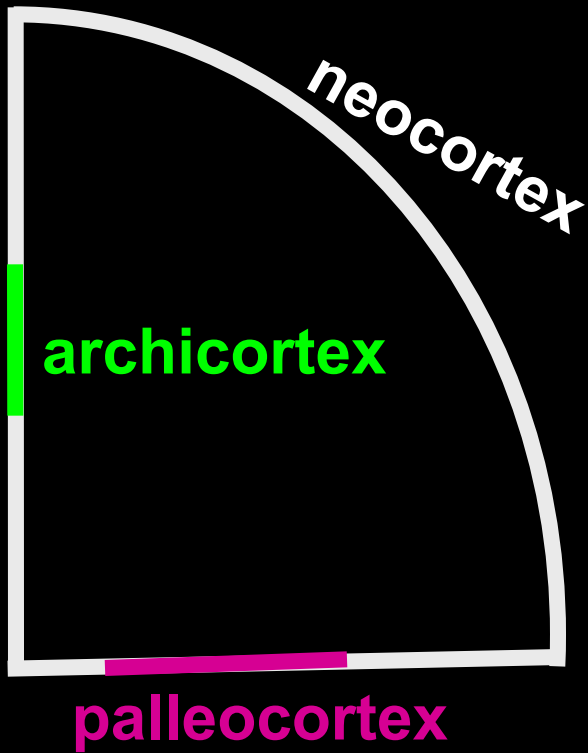
Functional connections of BG



Function of BG

inhibition of cortical and subcortical motor functions

Cerebral cortex



ALLOCORTEX

3-4 layers

a) **paleocortex** (rhinencephalon)

b) **archicortex**

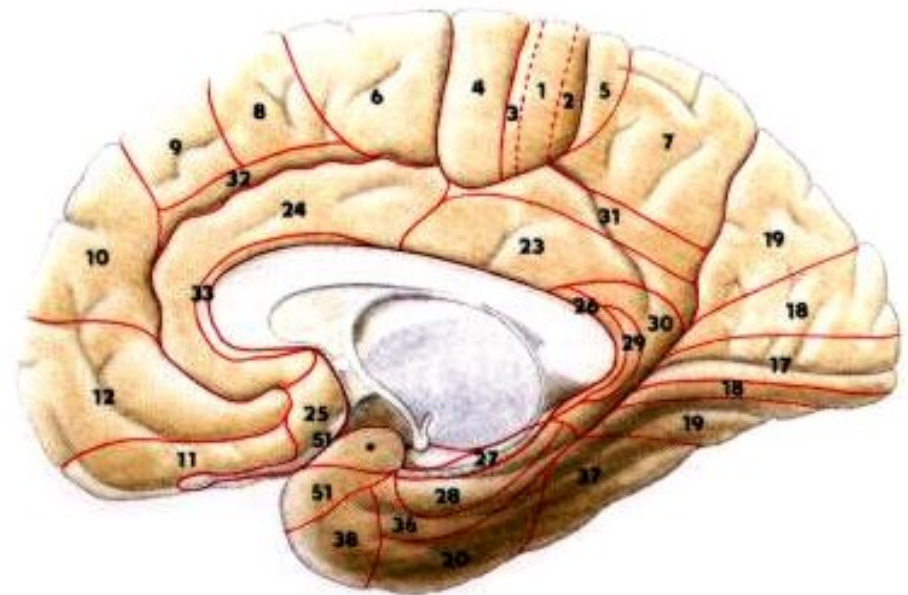
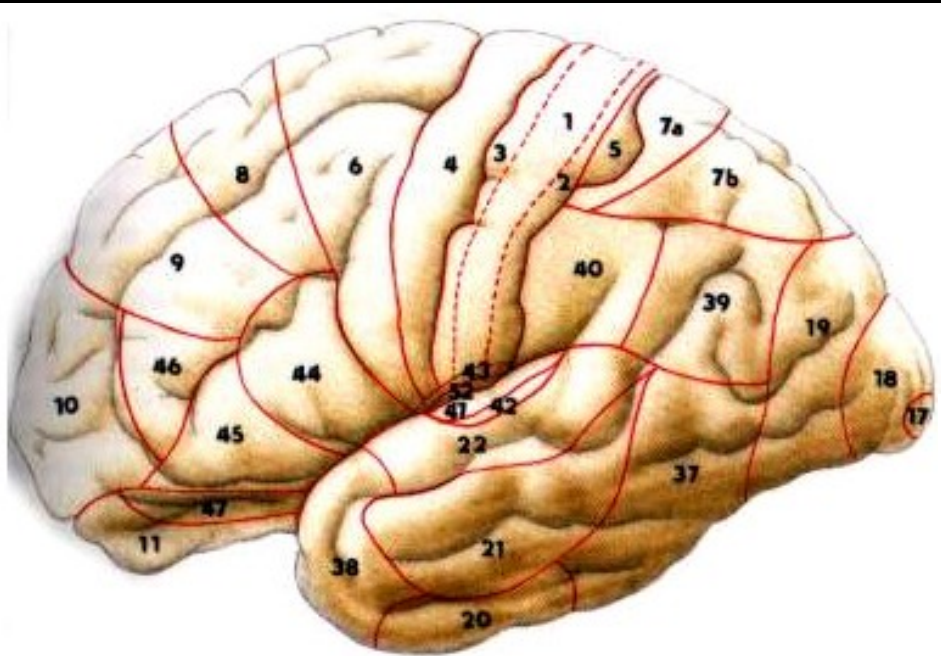
NEOCORTEX

6 layers

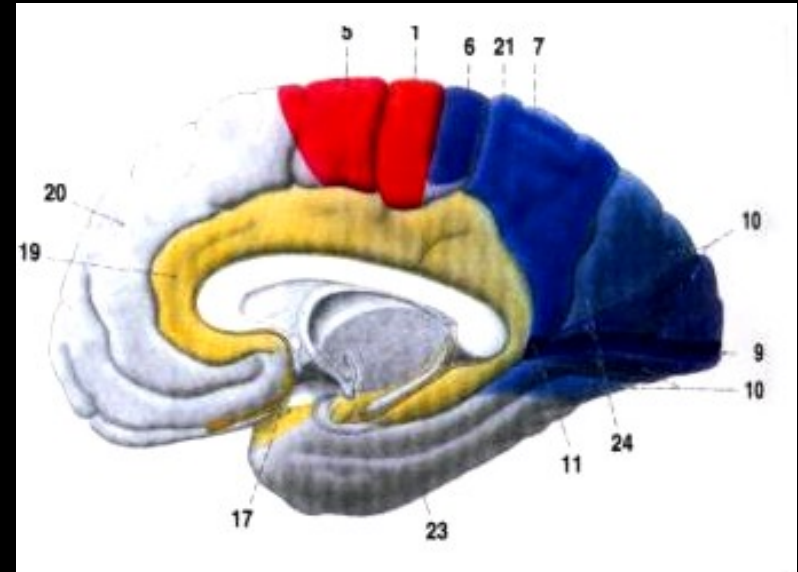
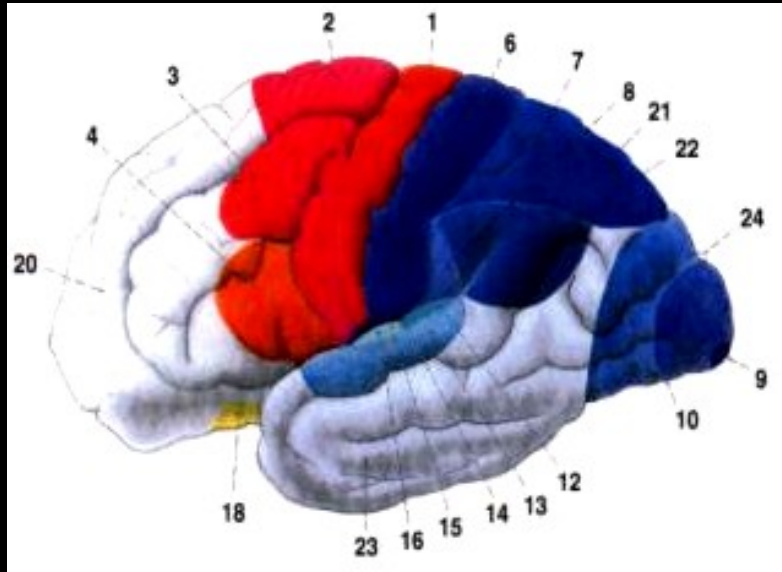
Brodman's map (cytoarchitectonic map of cortex)

11 regiones

52 areae



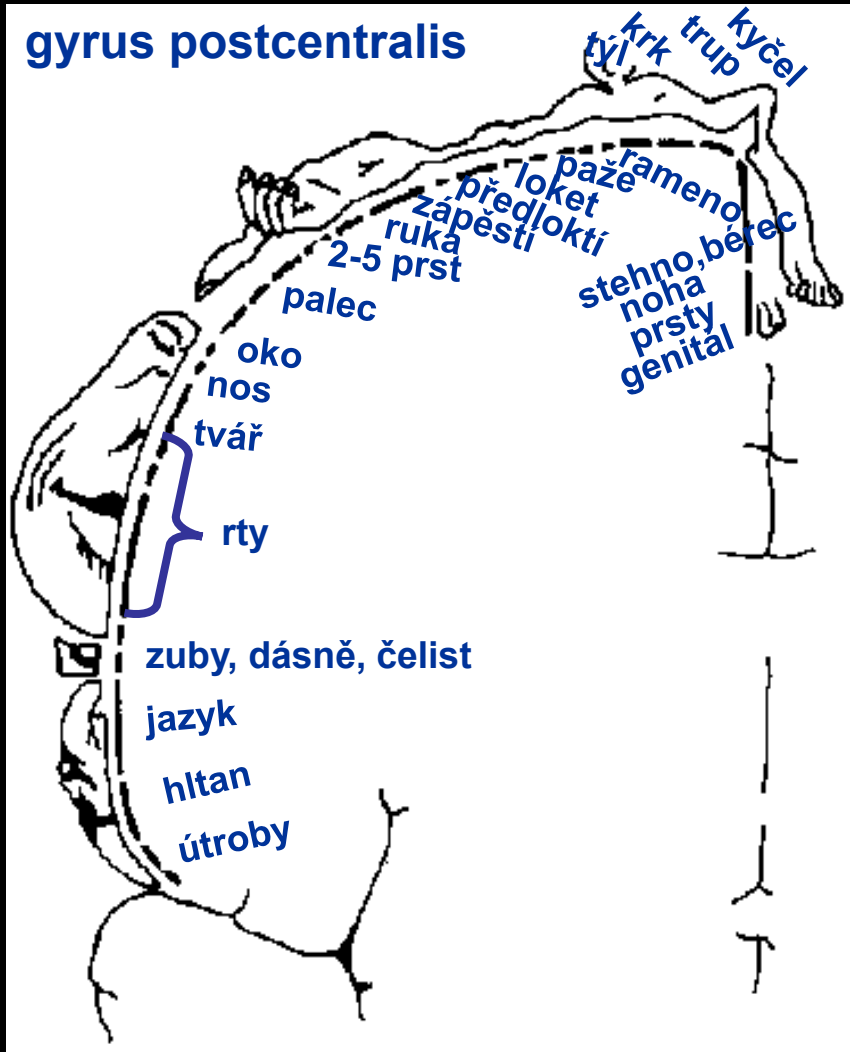
Functional regions of cortex



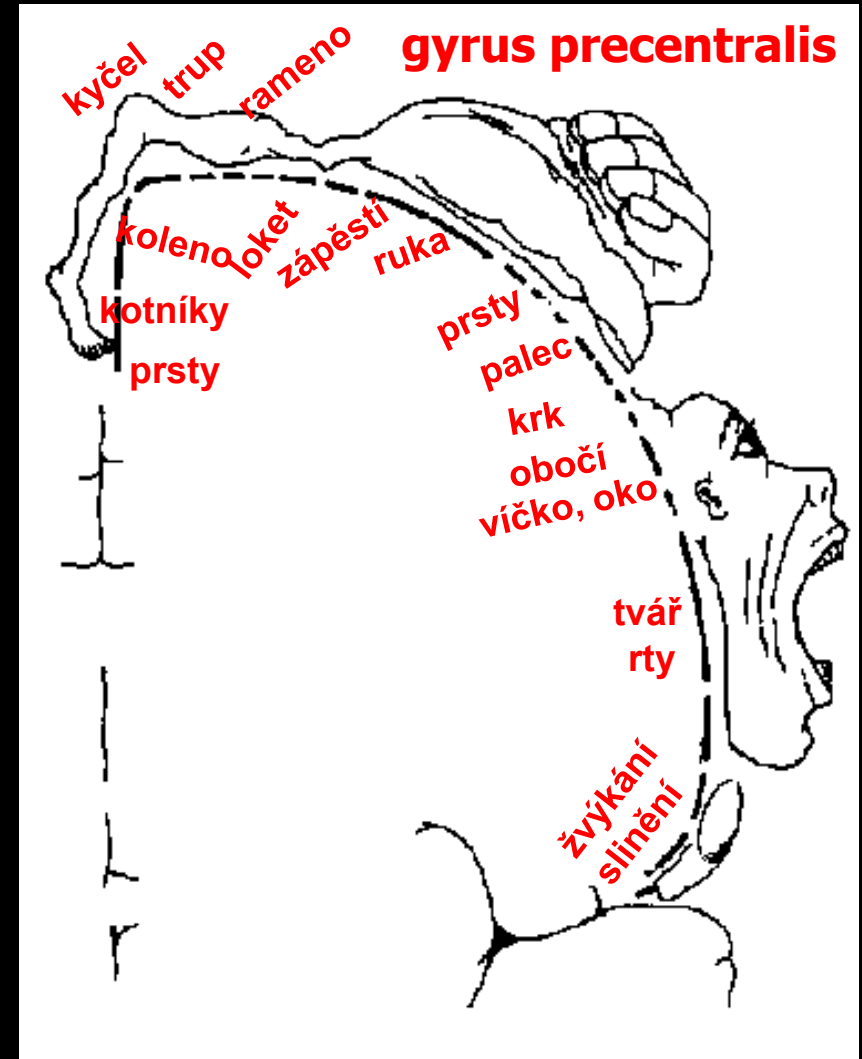
Primary motor c. (a 4), primary somatic sensory c. (a 3,1,2), primary visual c. (a 17), primary auditory c. (a 41,42)

Secondary and association areas

Representation of contralateral body parts

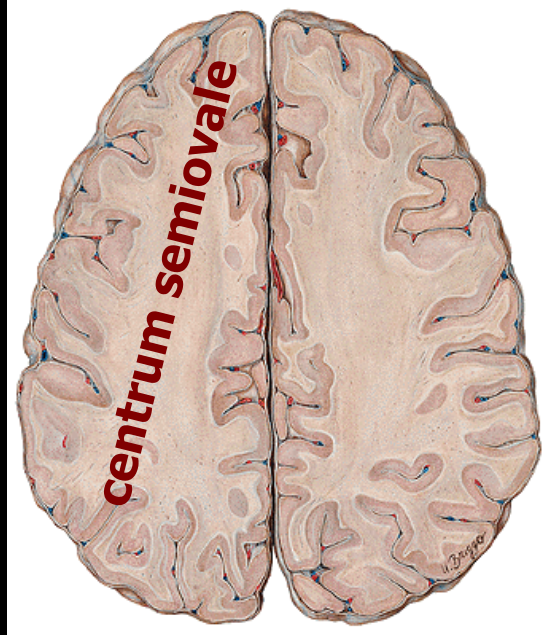


„sensory homunculus“



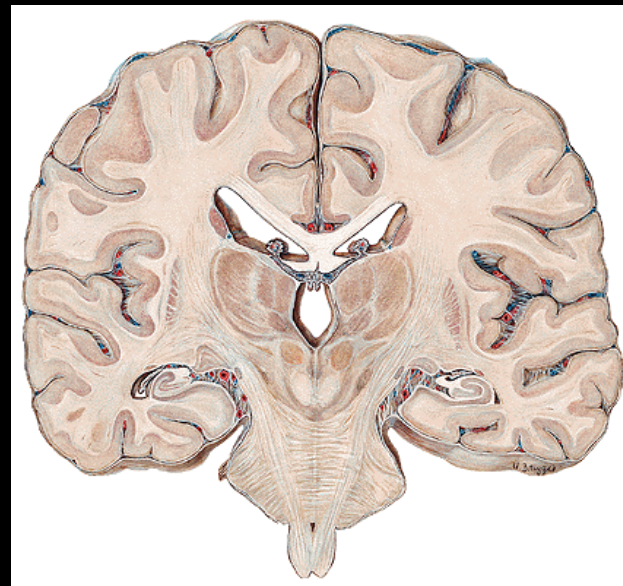
„motor homunculus“

White matter of the telencephalon - **corpus medullare**

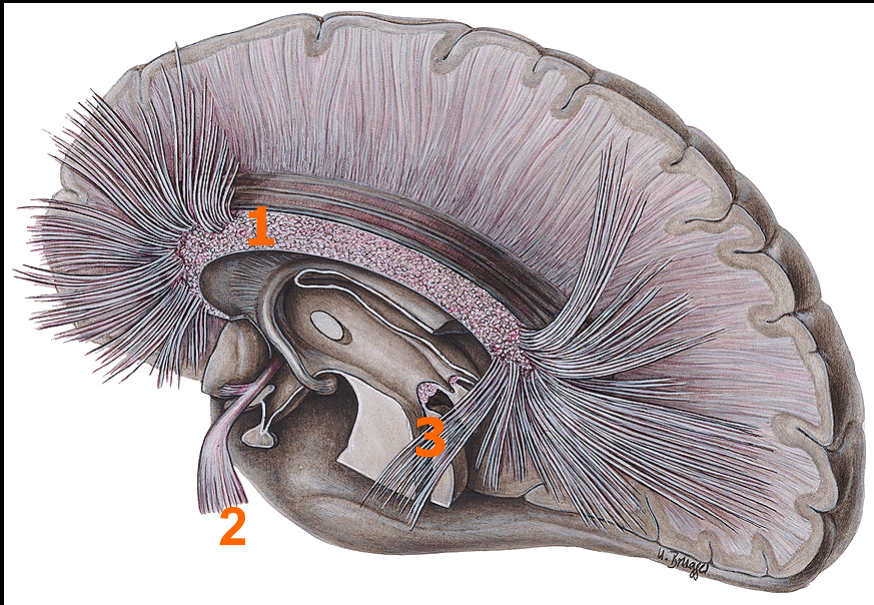


Fibers

commissural
projection
association



Commissural fibers



1 corpus callosum
neocortex

2 commissura ant.
pars ant.- paleocortex
pars post. - neocortex

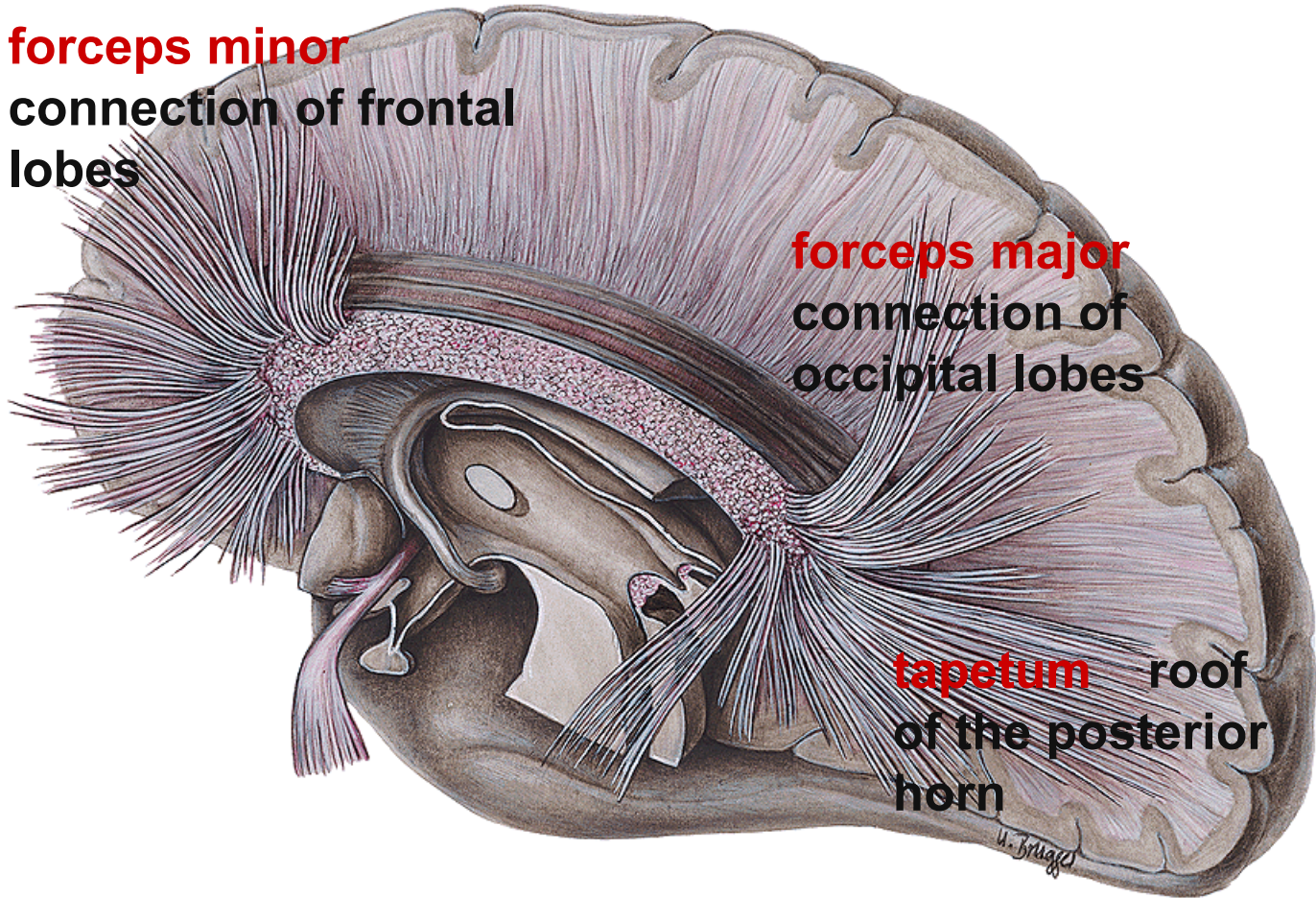
3 commissura fornicis
archicortex

Corpus callosum - 300 million fibers

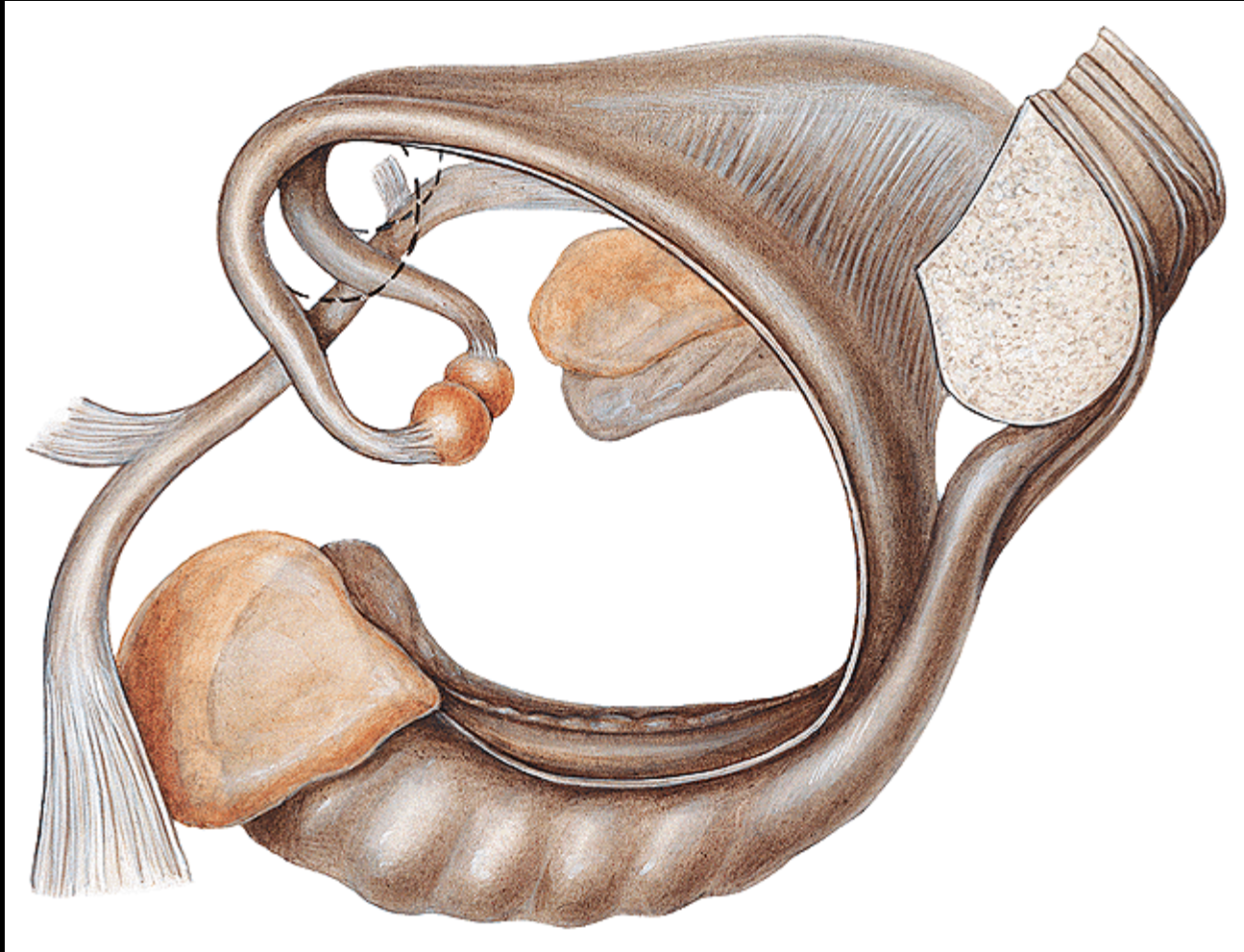
forceps minor
connection of frontal
lobes

forceps major
connection of
occipital lobes

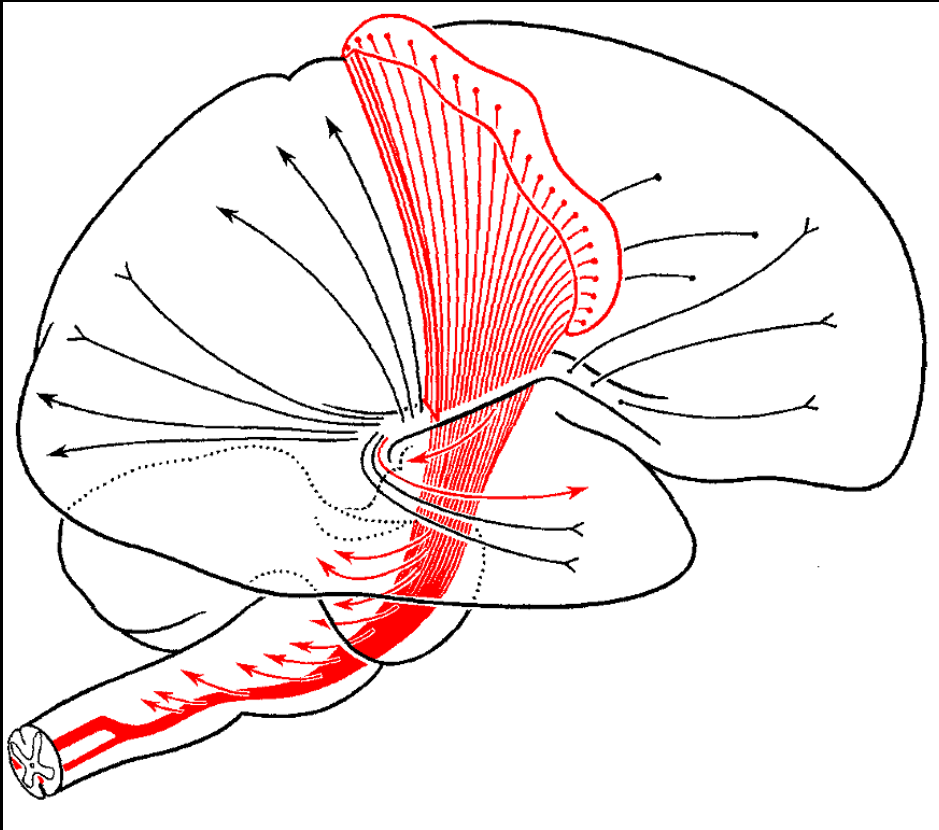
tapetum roof
of the posterior
horn



Commissura fornicis et anterior



Projection fibers



short

connections between
cortex and BG

reciprocal connections
between cortex and
thalamus

long

tr. co-sp

tr. co-ncl

tr. co-ret

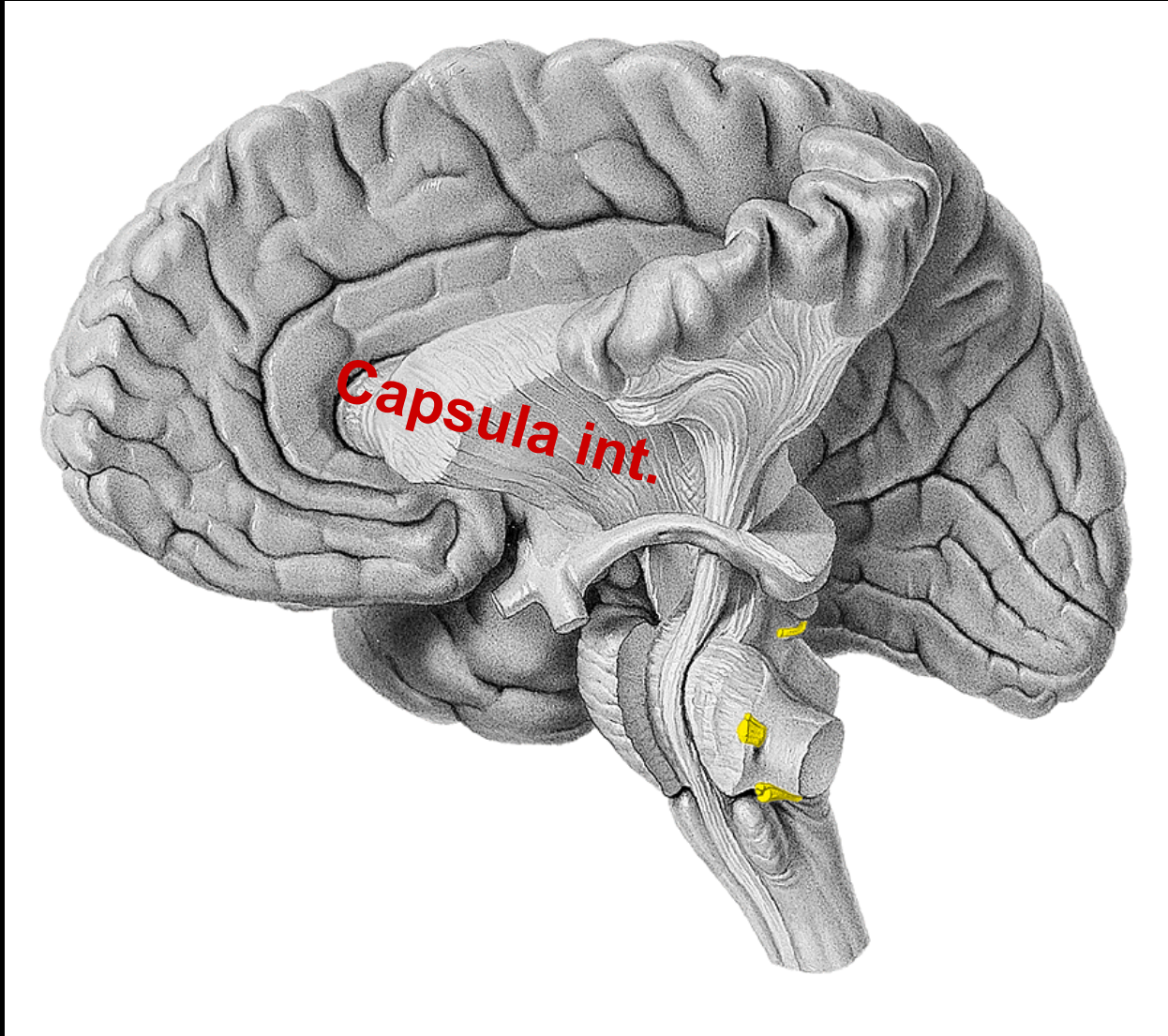
tr. co-tec

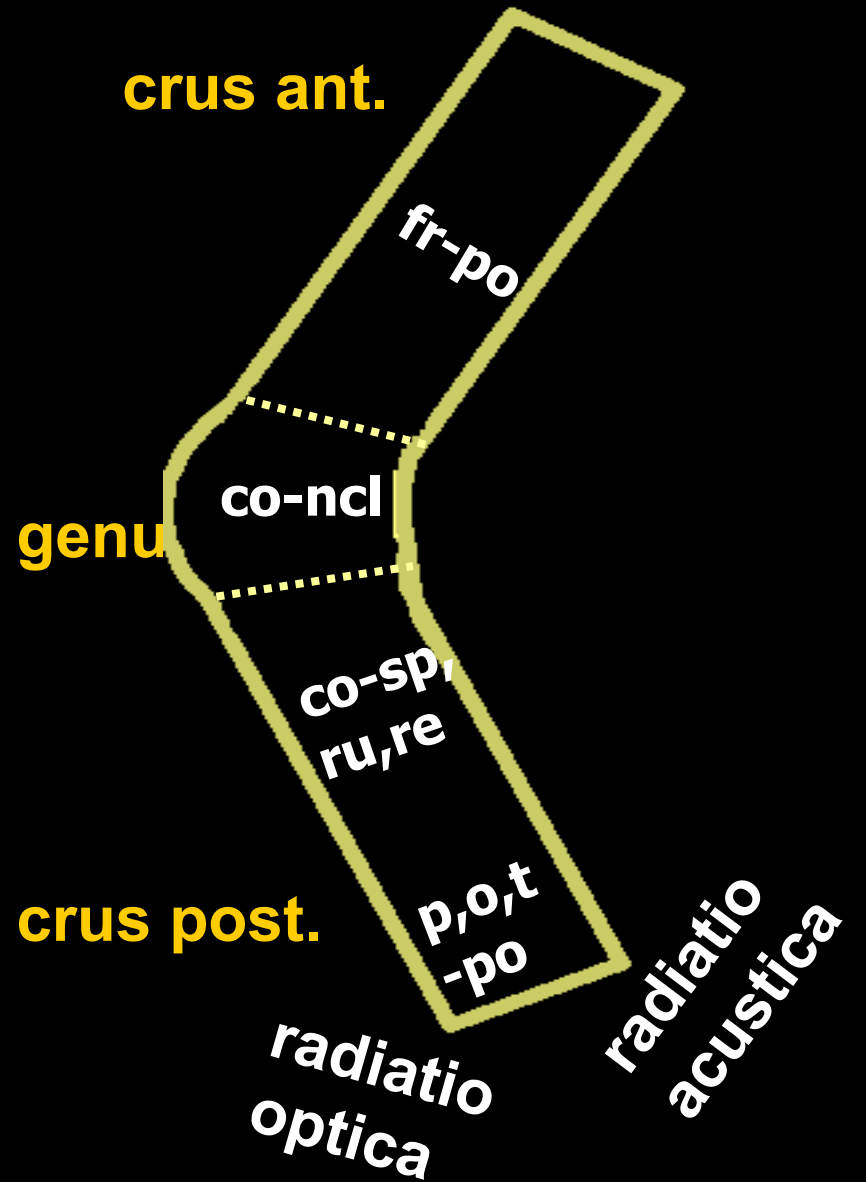
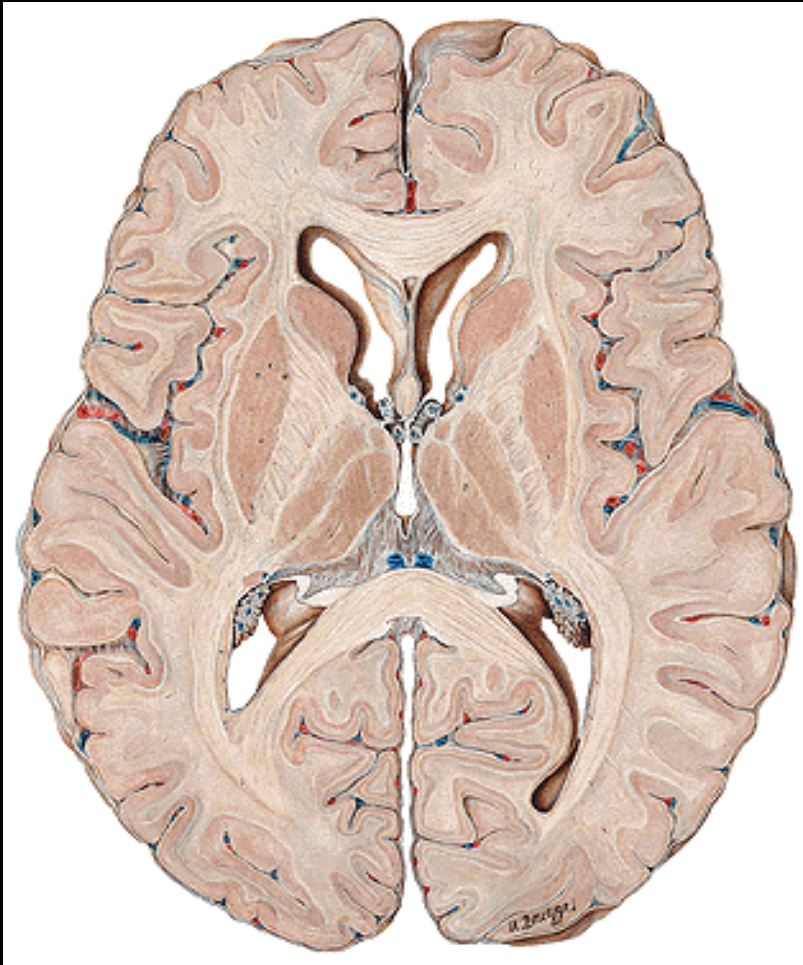
tr. co-ru

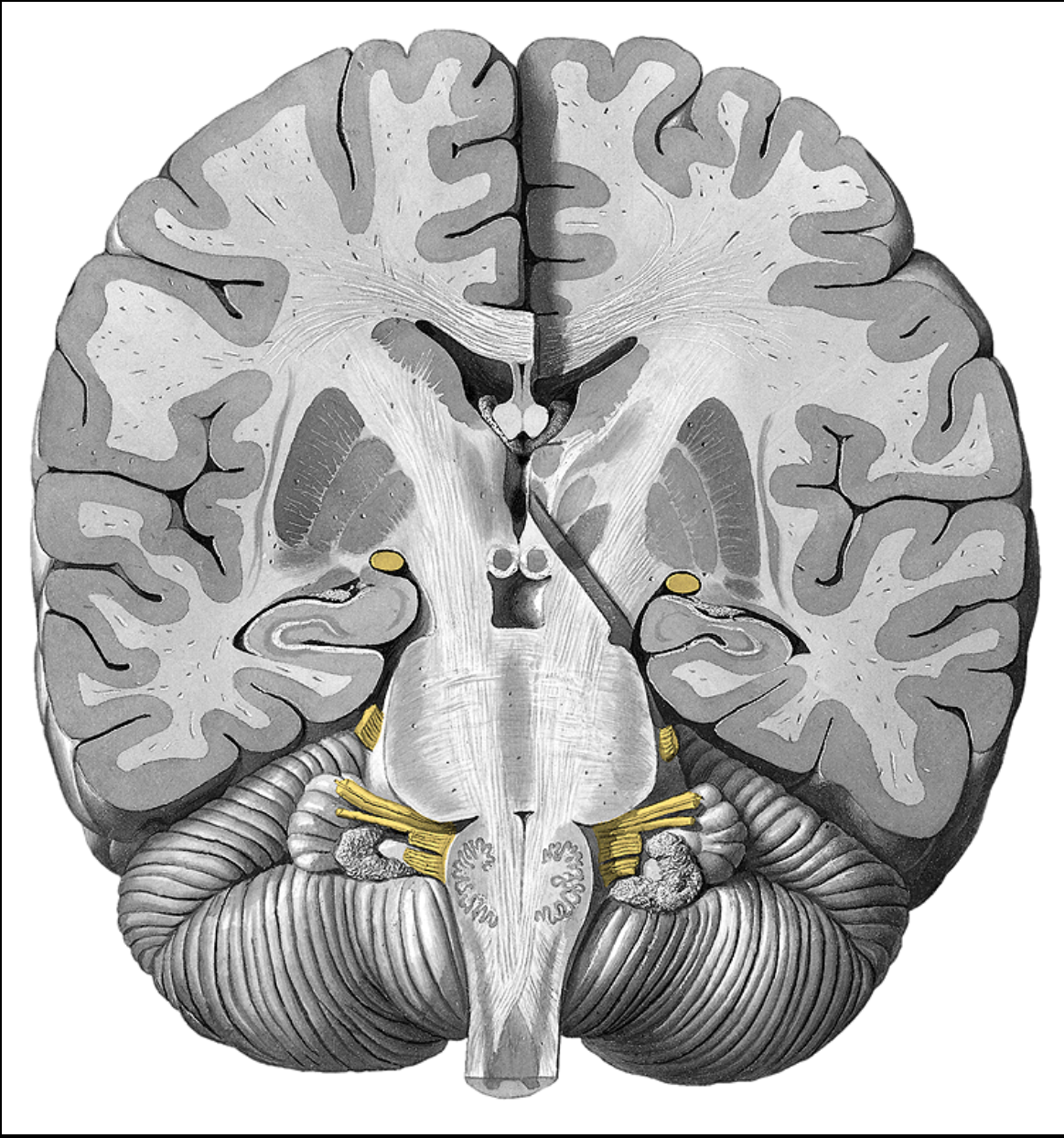
tr. co-bulb

tr. co-po

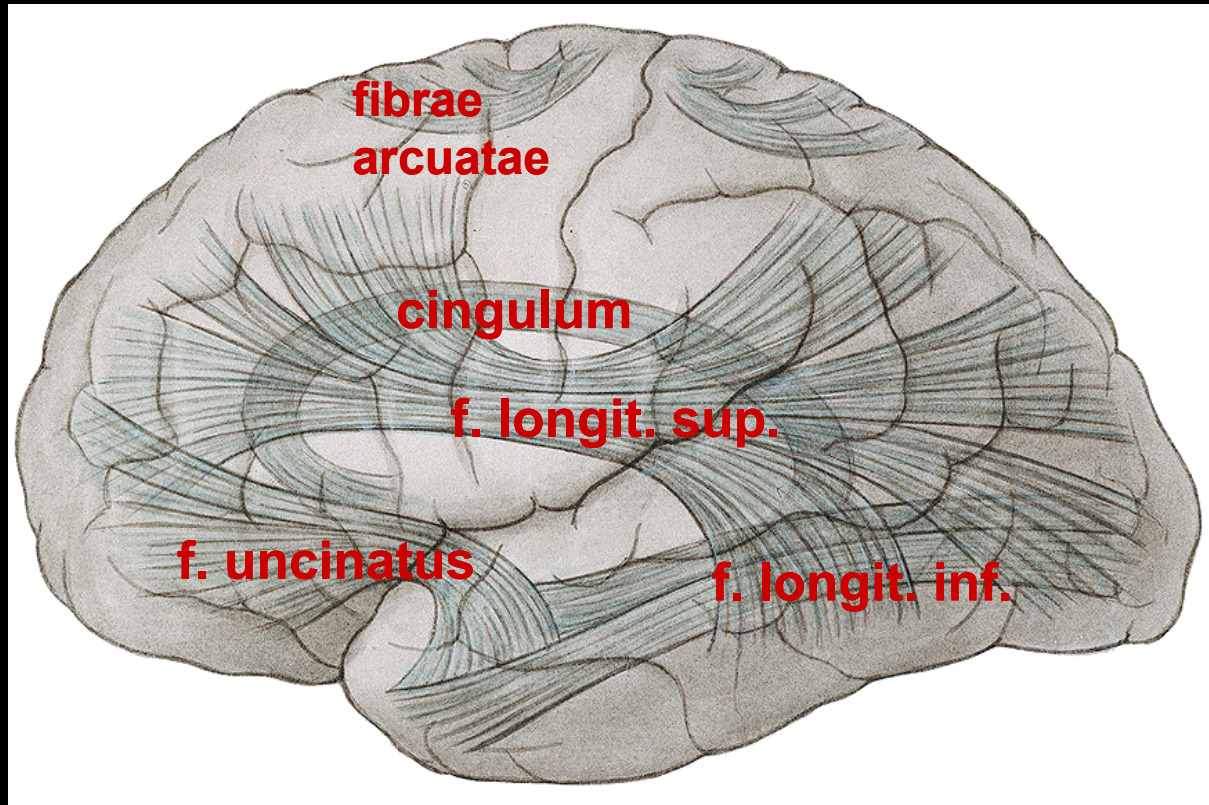
capsula
interna







Association fibers: short (fibrae arcuatae), long



Illustrations were copied from:

**Atlas der Anatomie des Menschen/
Sobotta. Putz,R., und Pabst,R. 20.
Auflage. München: Urban &
Schwarzenberg, 1993**

**Netter: Interactive Atlas of Human
Anatomy. Windows Version 2.0**