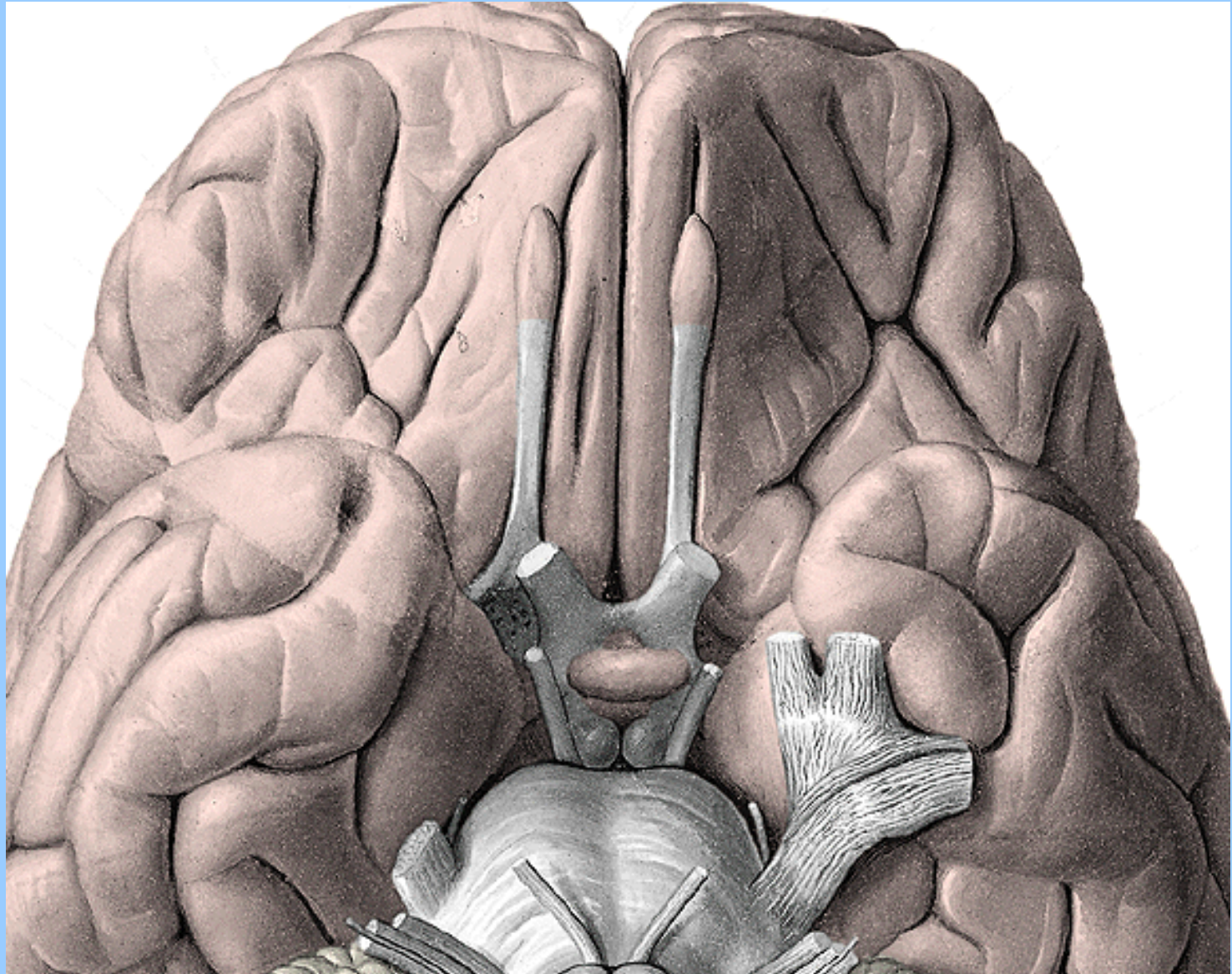
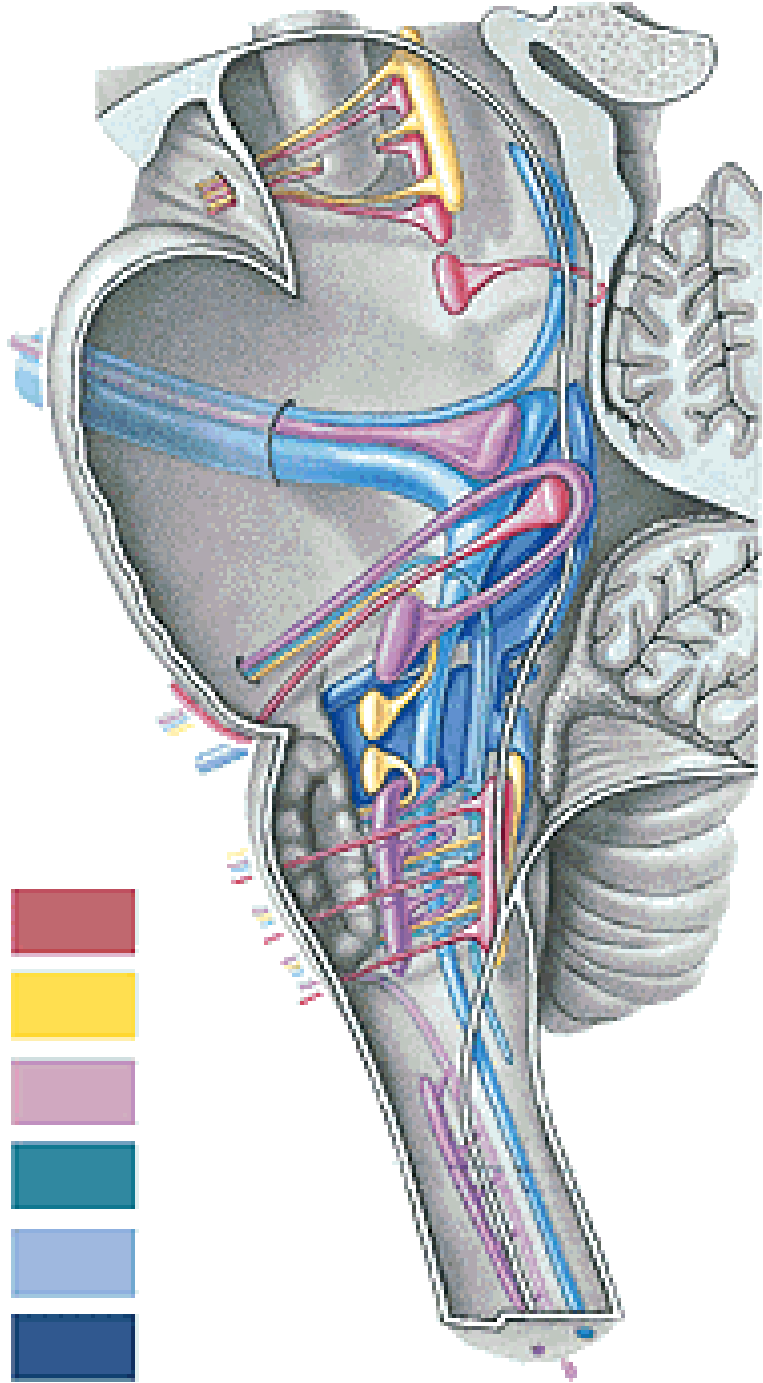


CRANIAL NERVES I

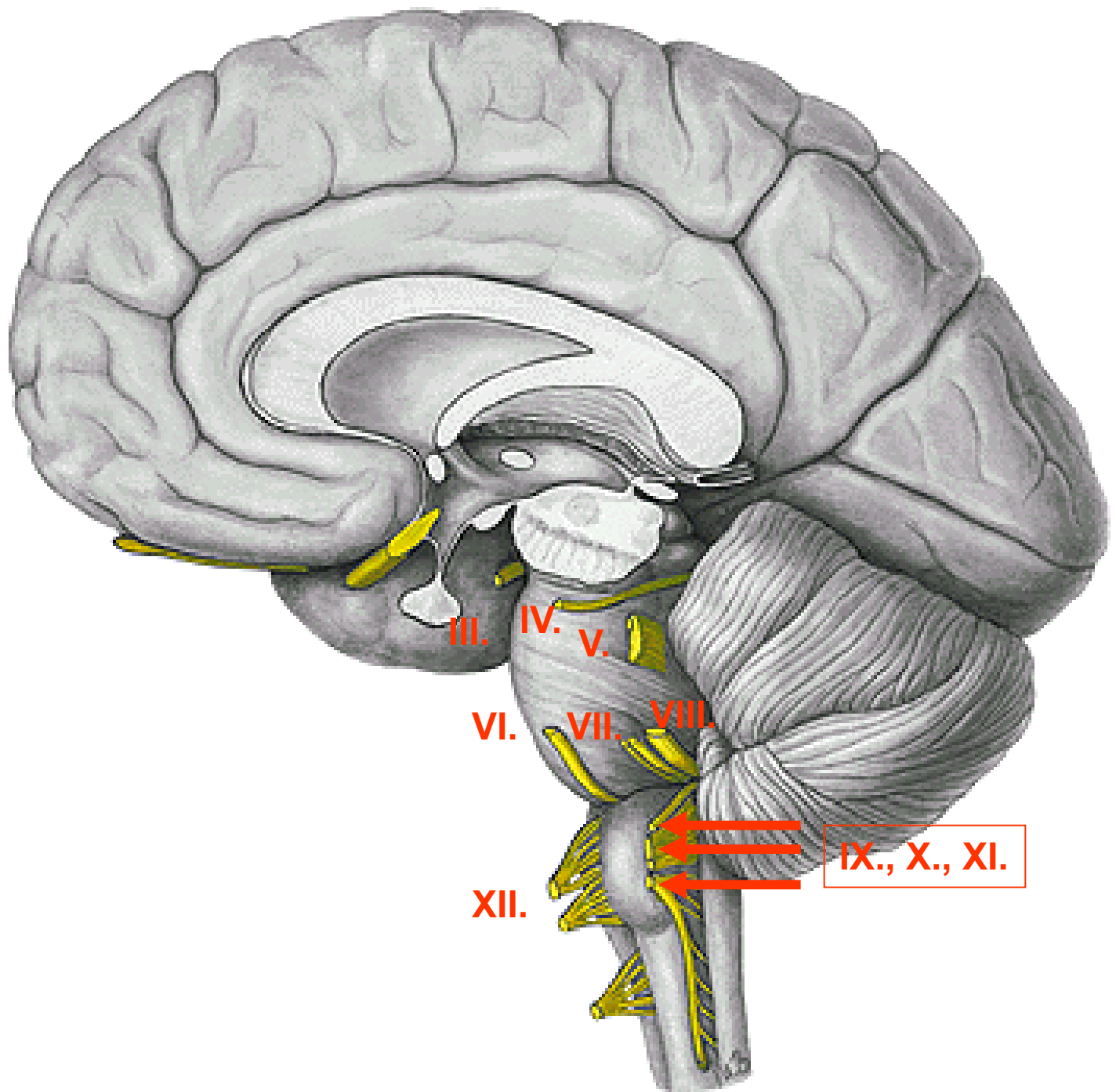
CN I – NN. OLFACTORII
CN II – N. OPTICUS

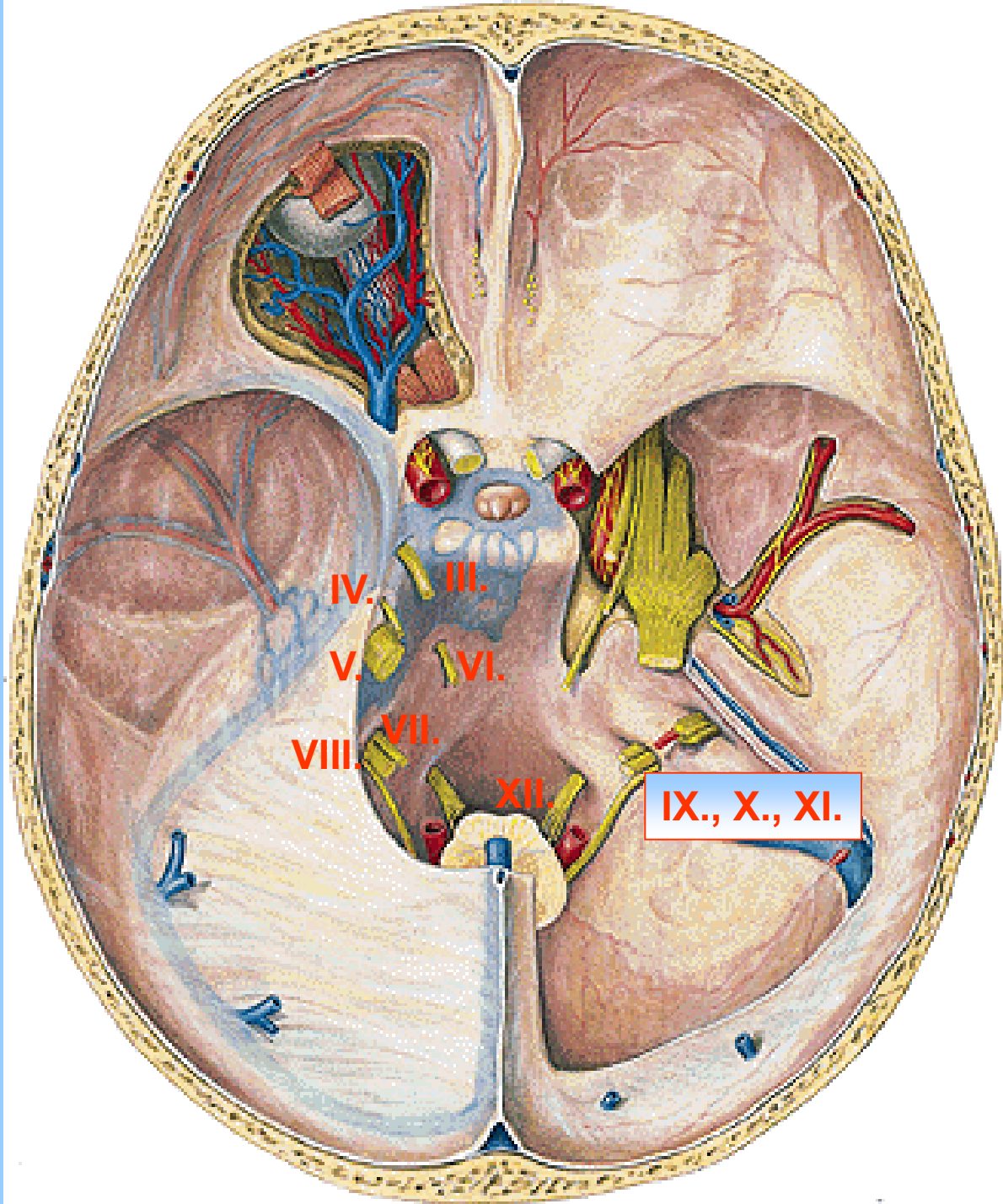


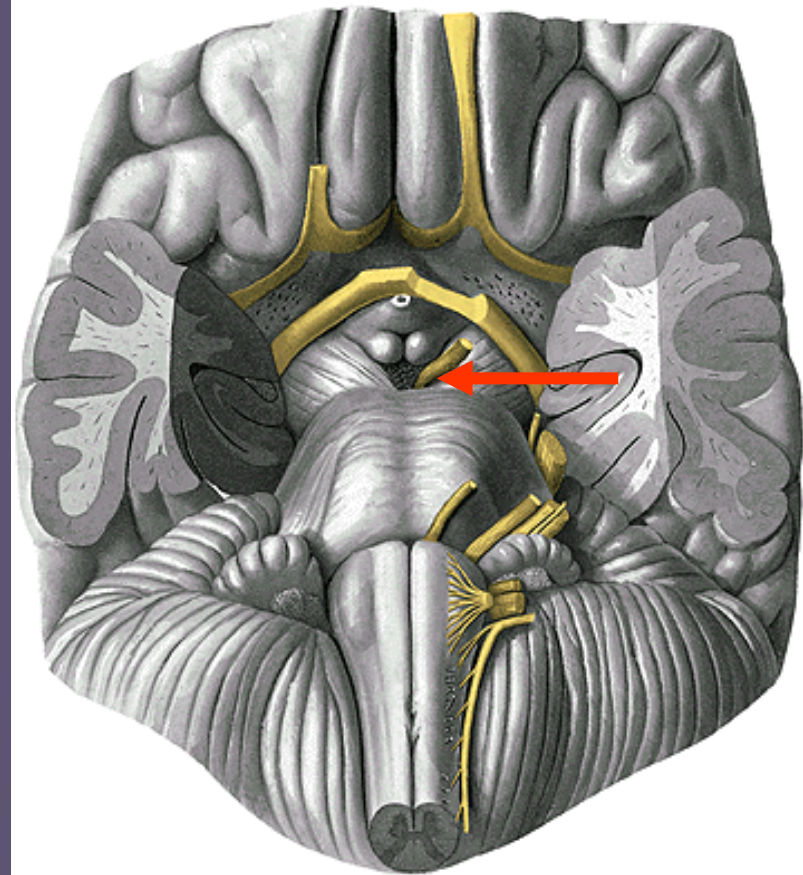
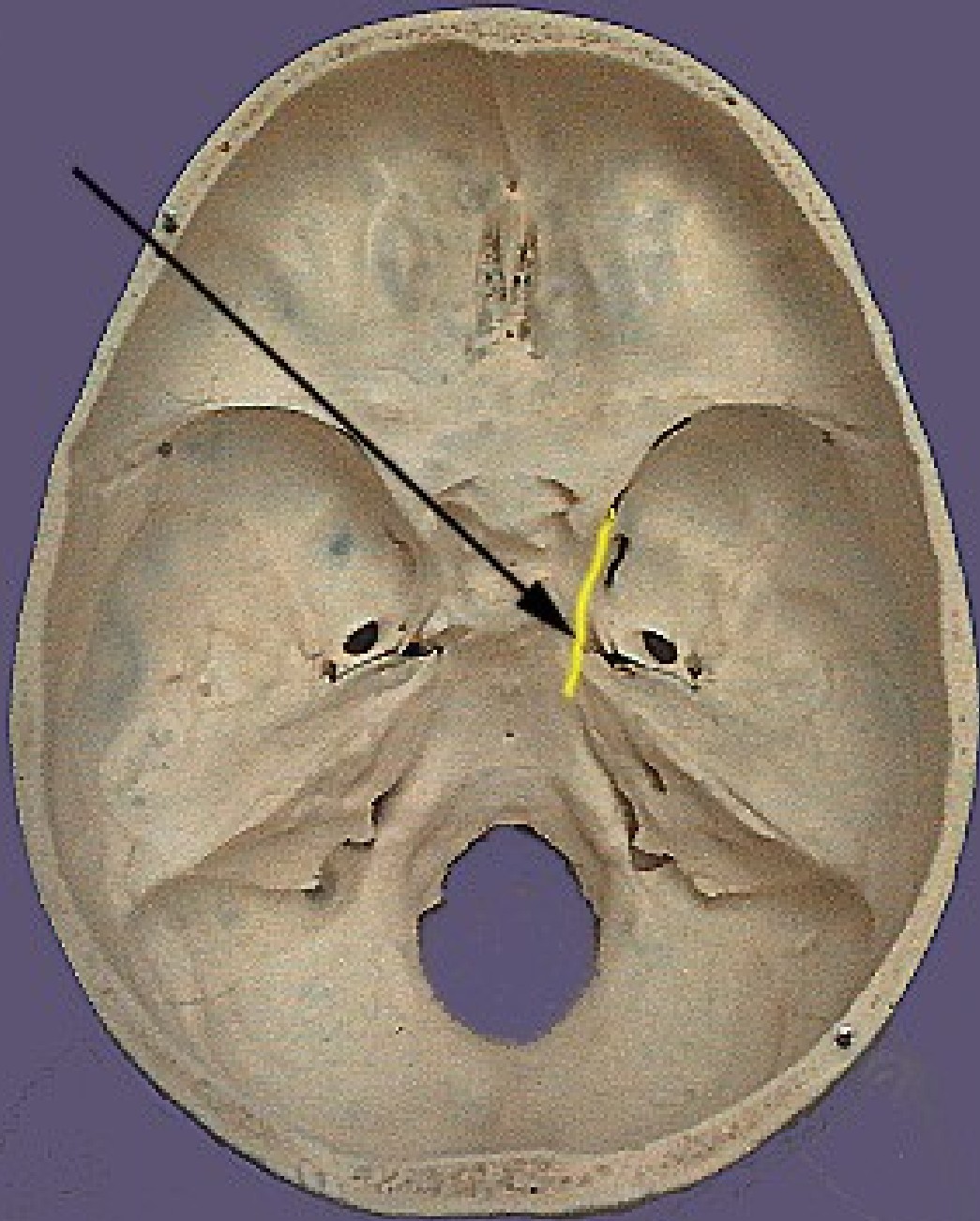


- SOMATOMOTOR
- VISCEROMOTOR
- BRANCHIOMOTOR
- SOMATOSENSORY
- VISCEROSENSORY
- SPECIAL SENSORY

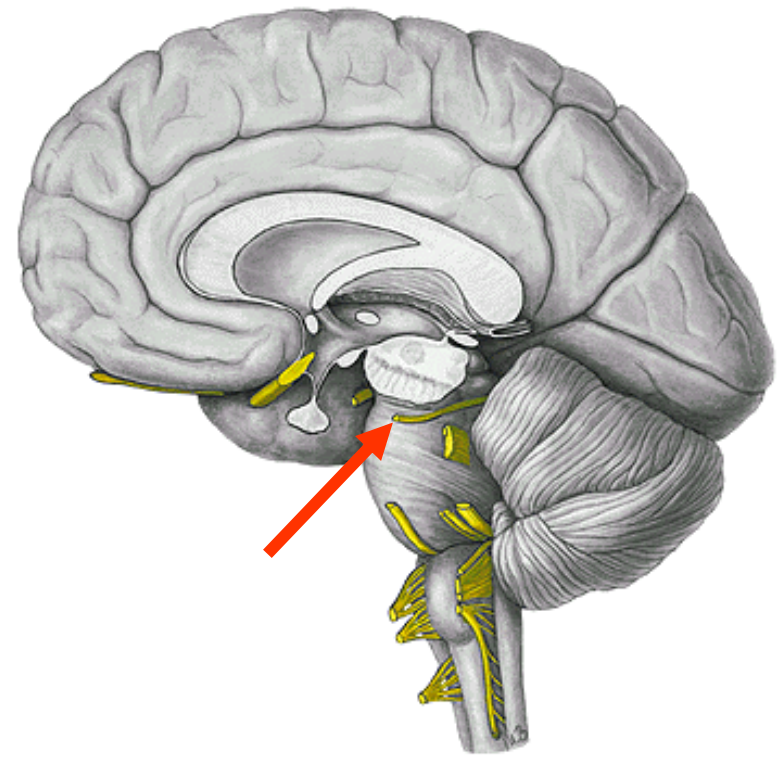
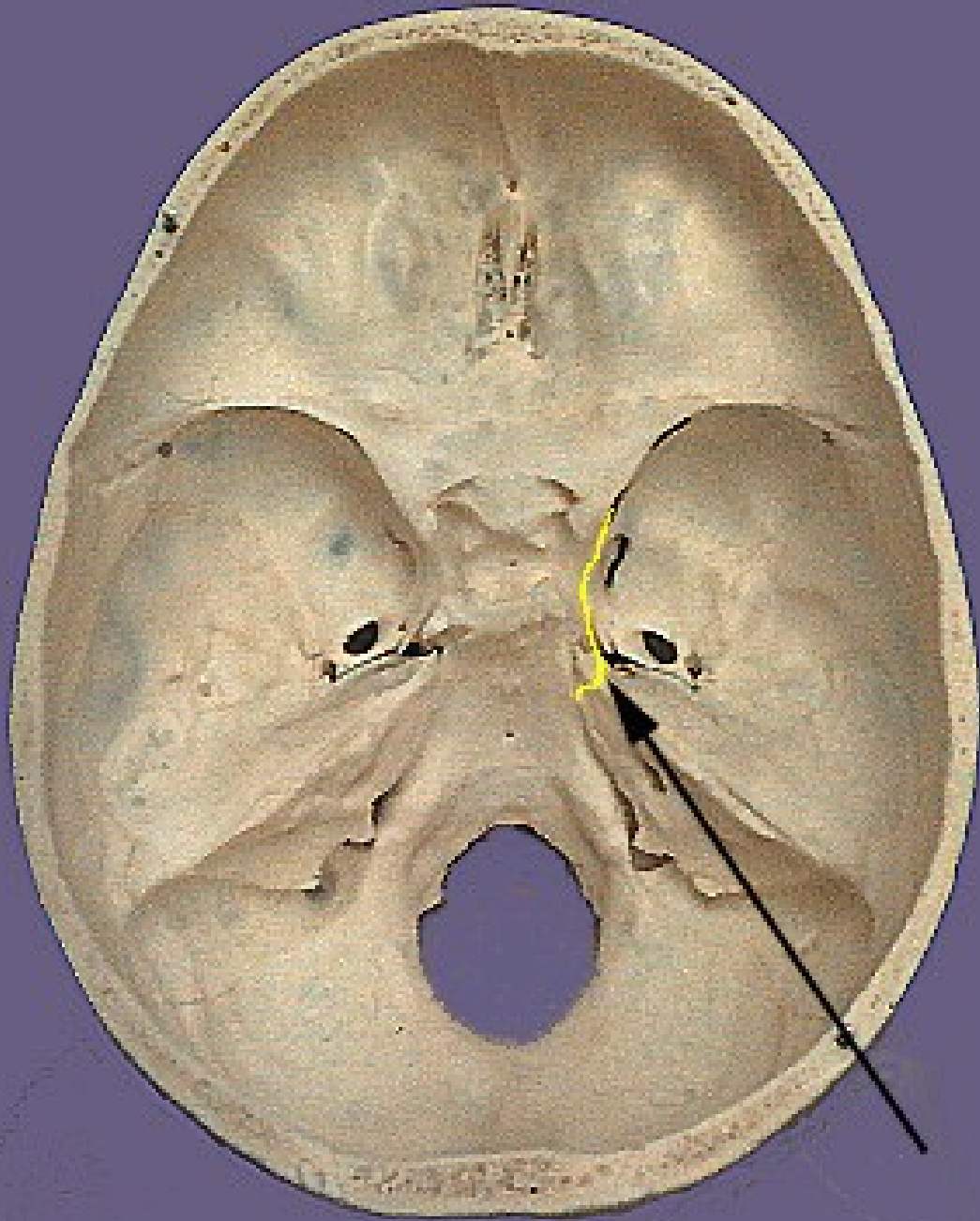






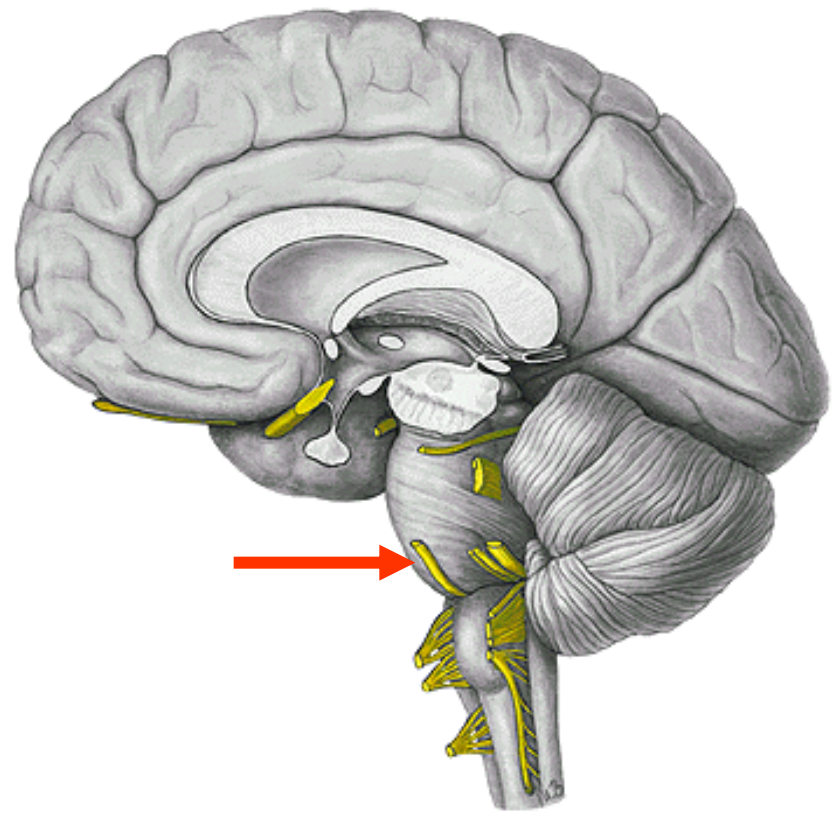
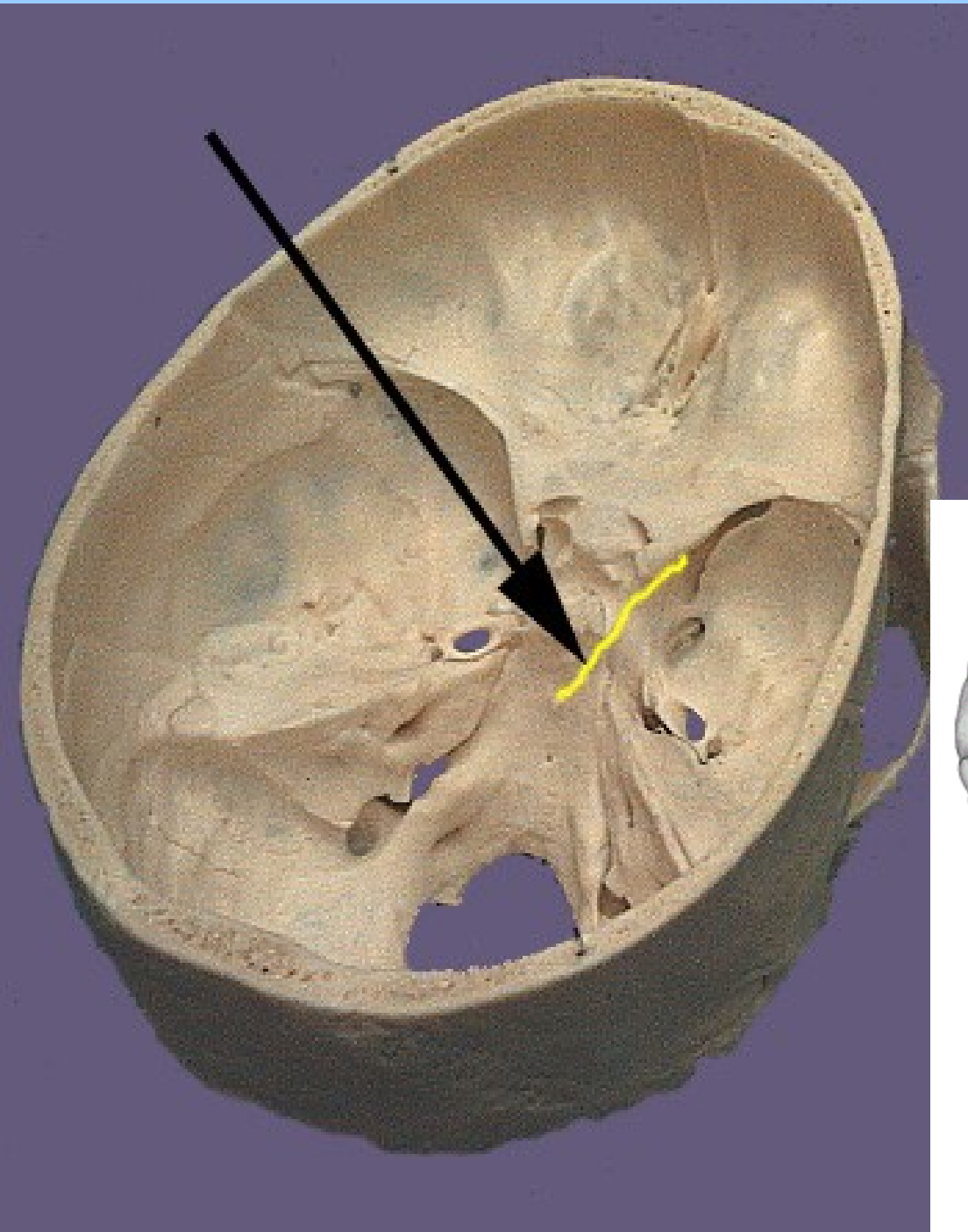


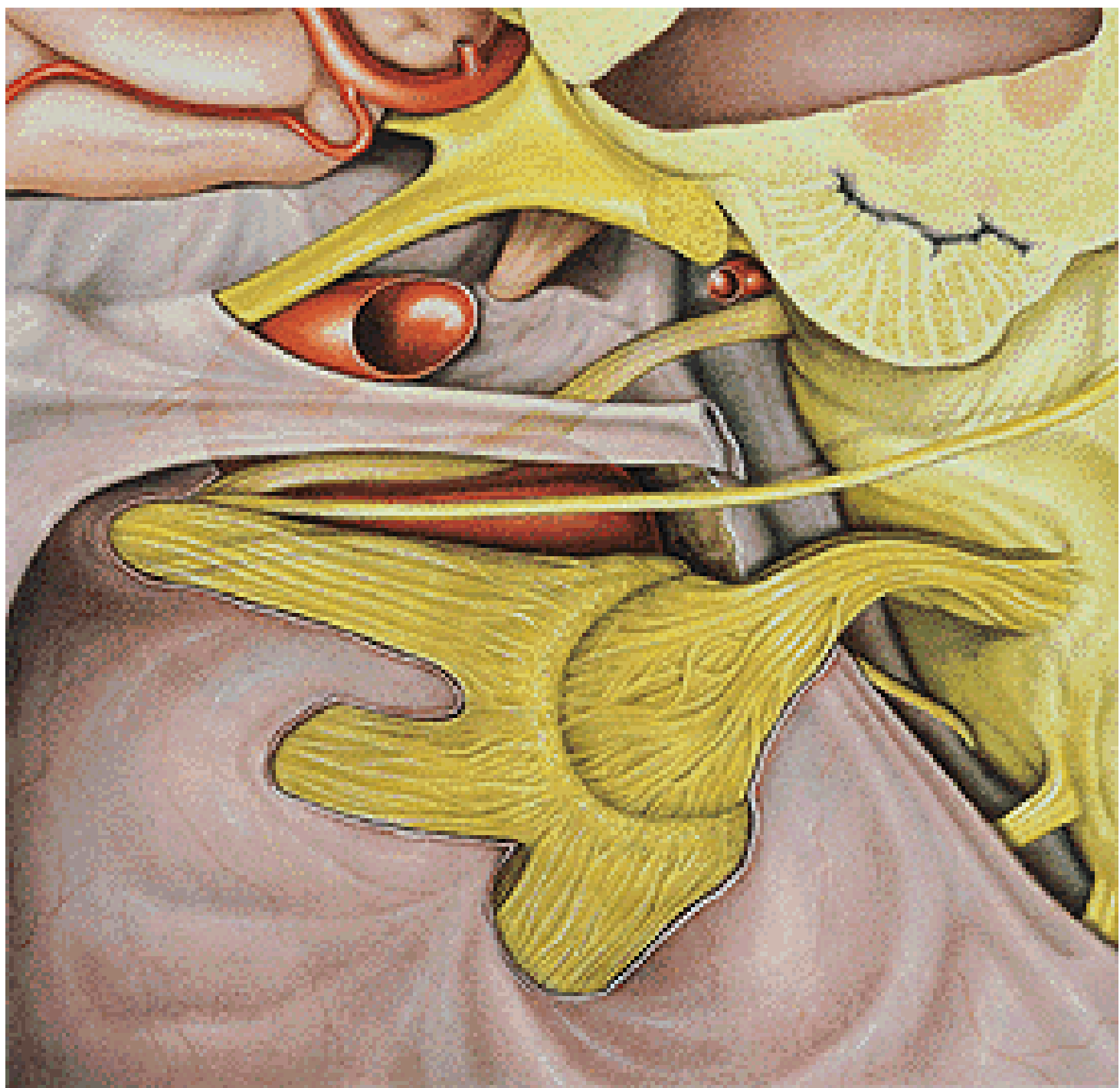
n.III.



n.IV.

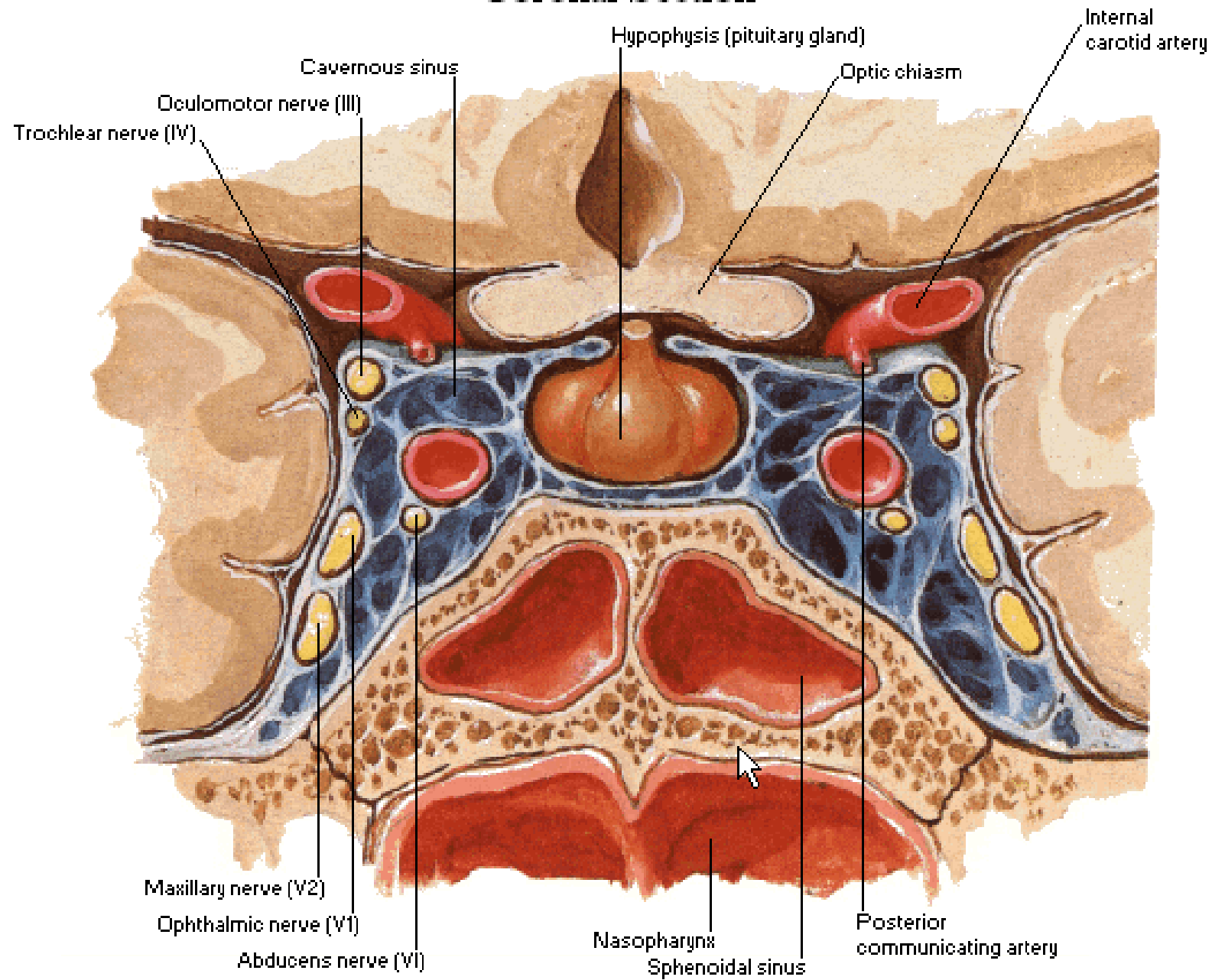
n.VI.

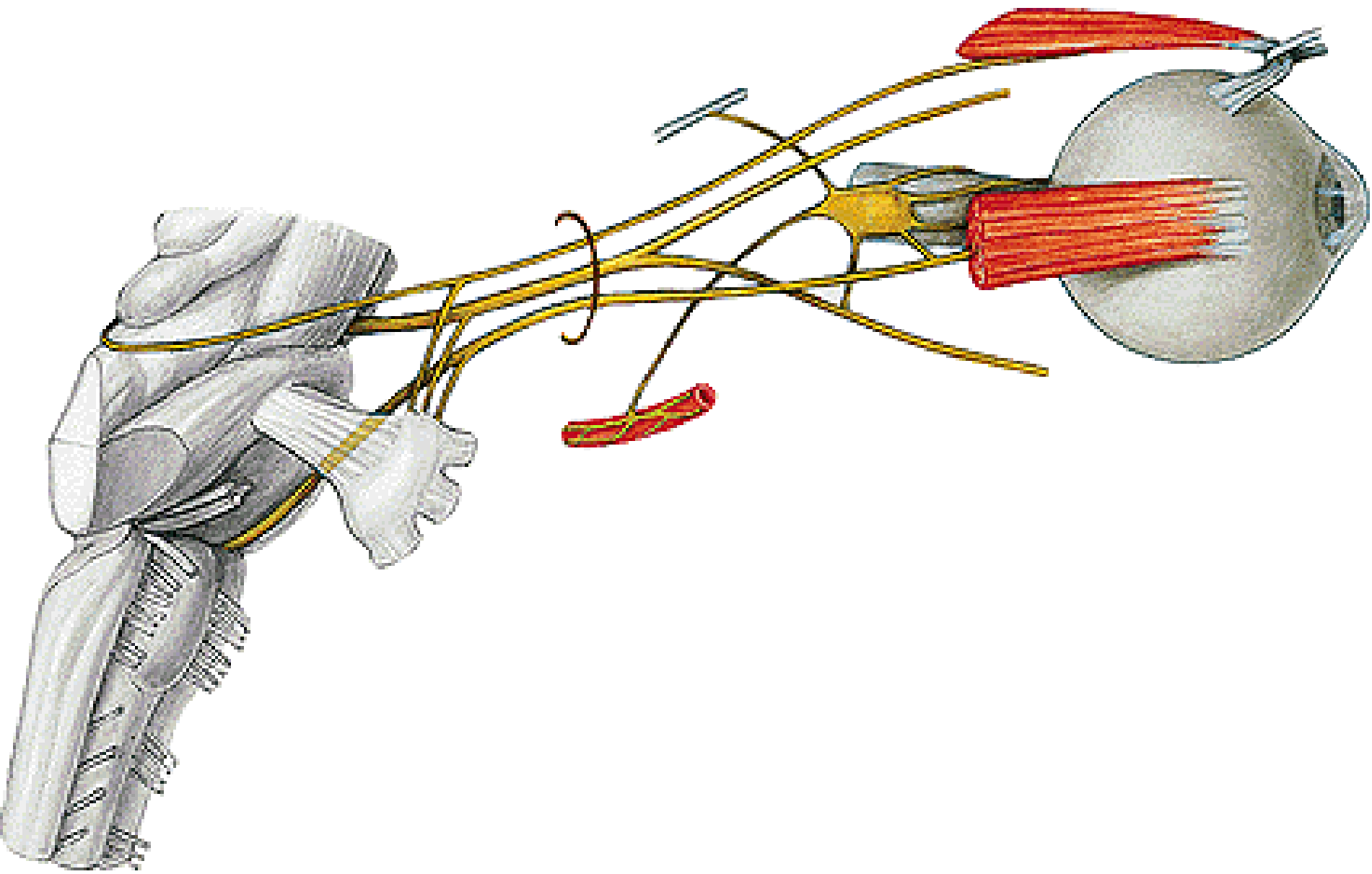


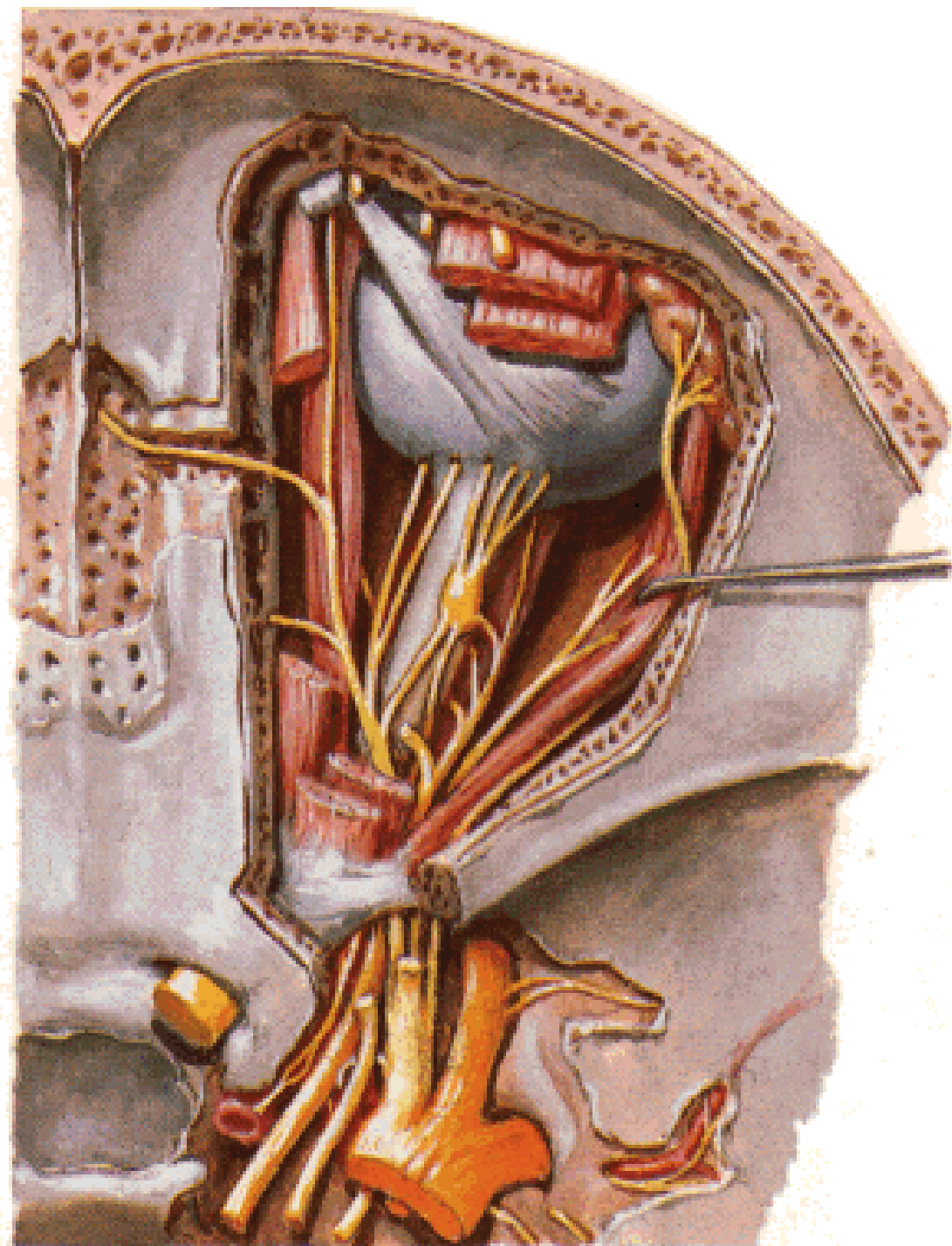


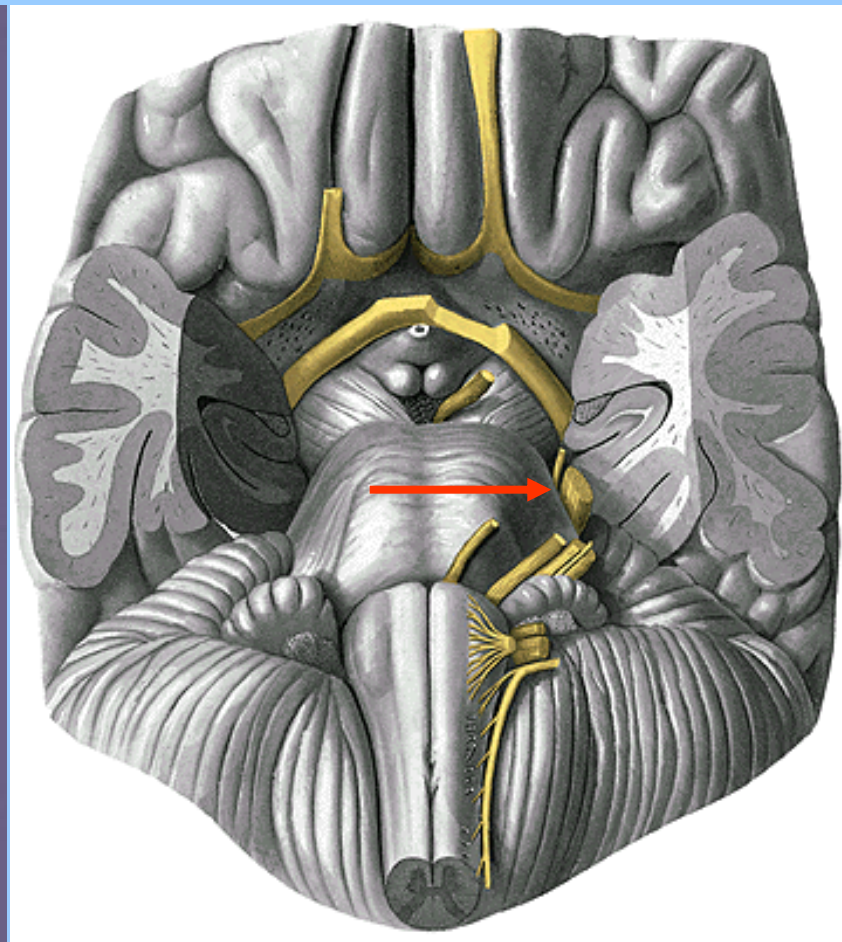
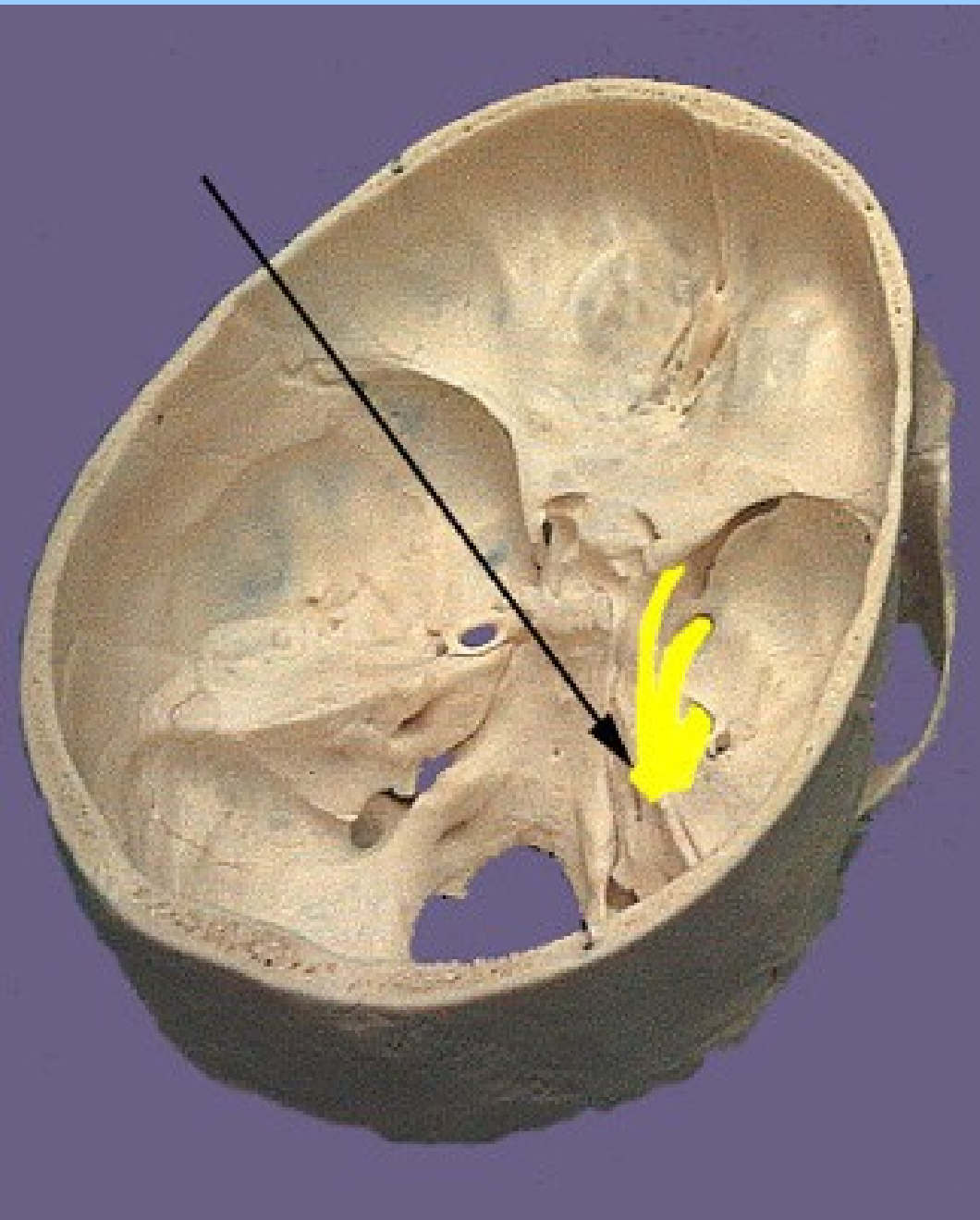
Cavernous Sinus

Coronal Section

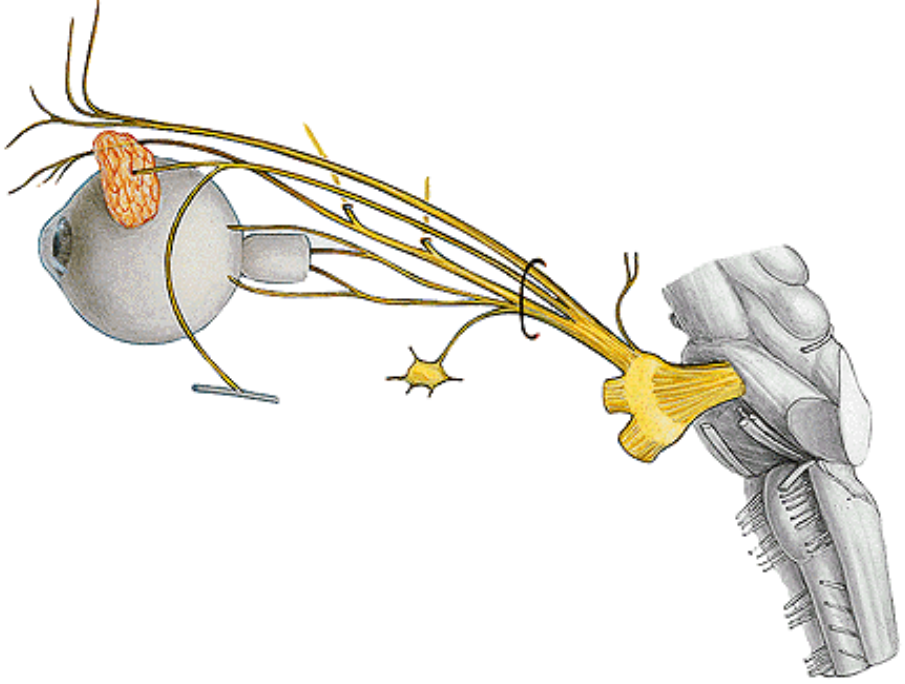




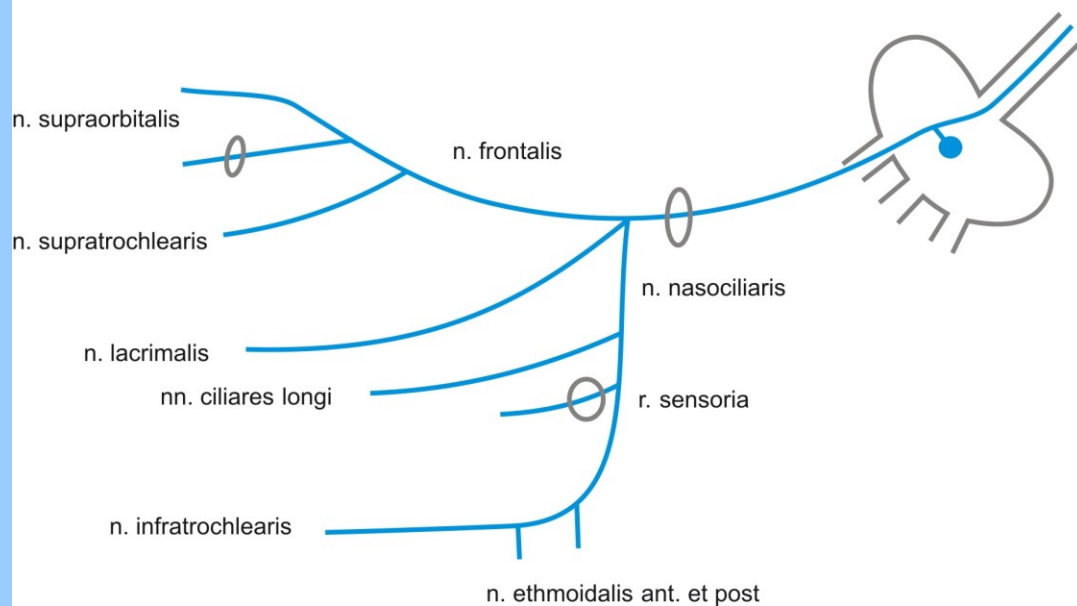




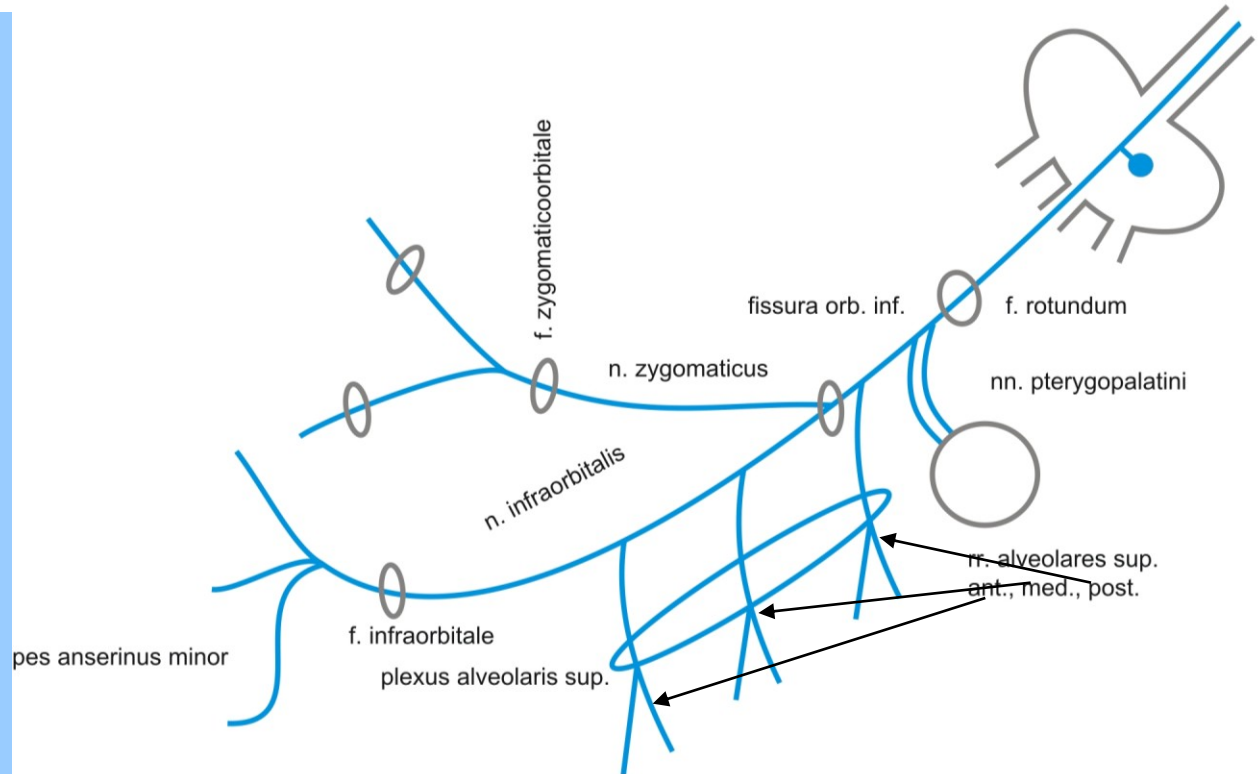
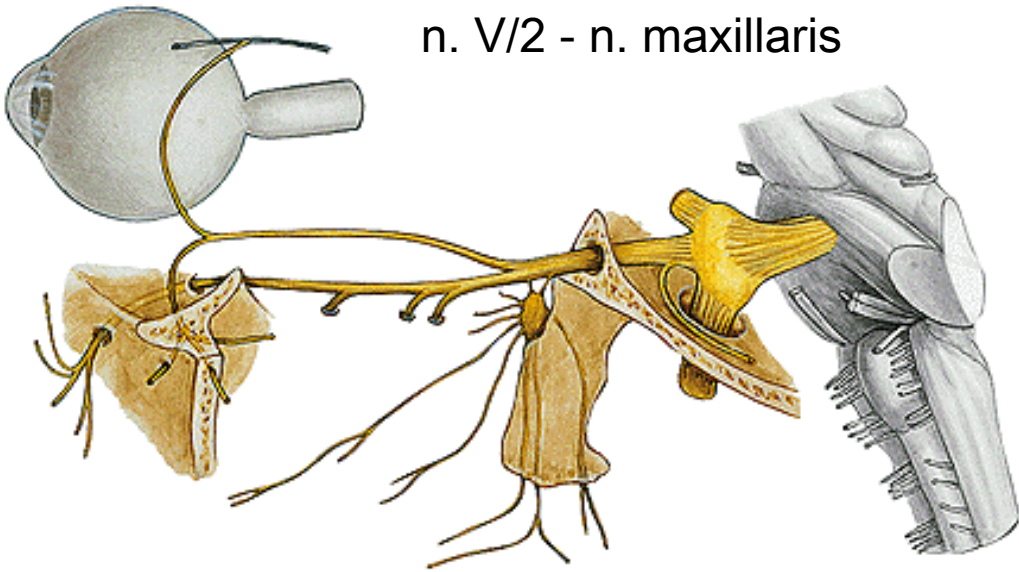
n.V.



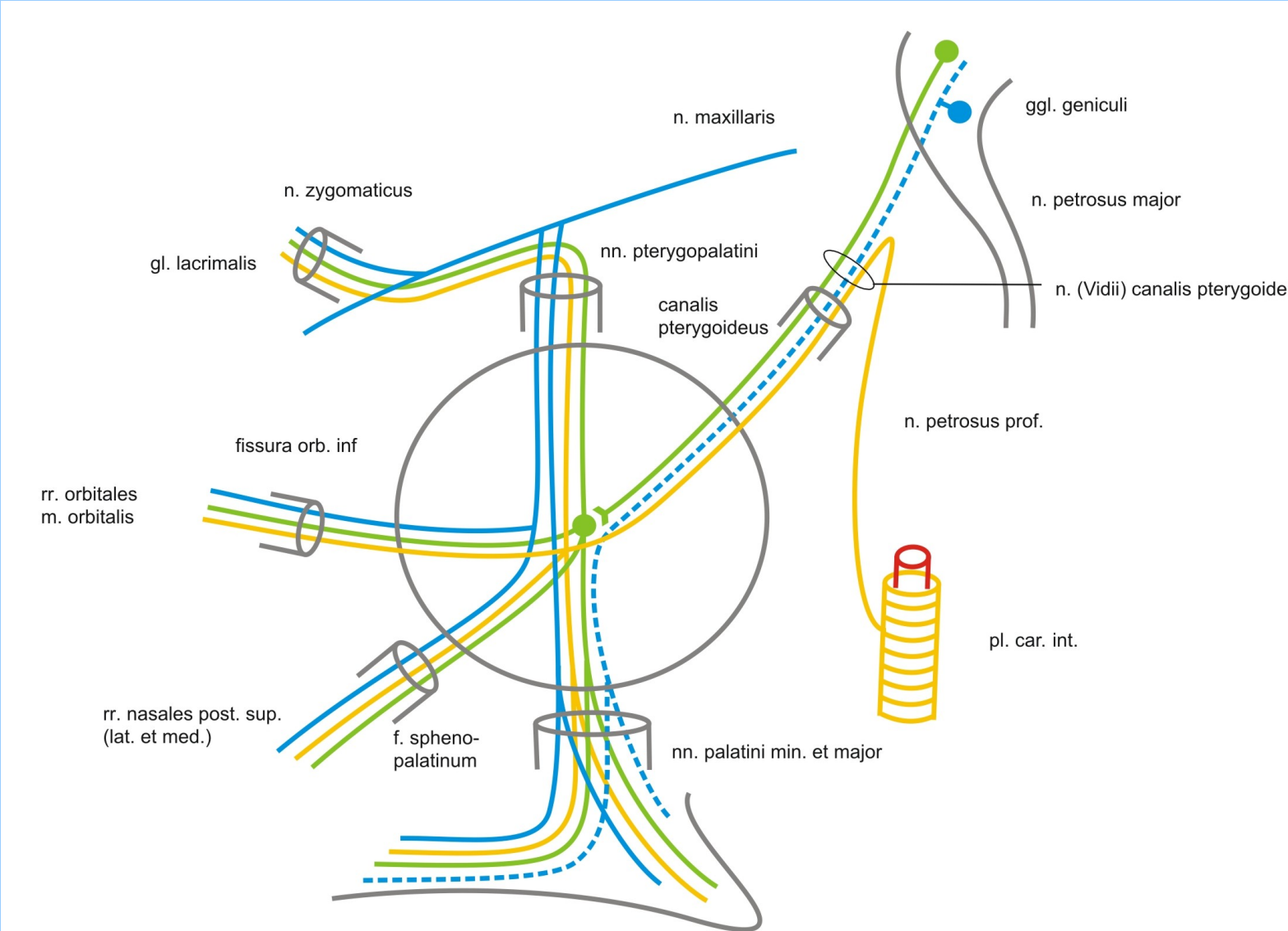
n. V/1 - n. ophthalmicus



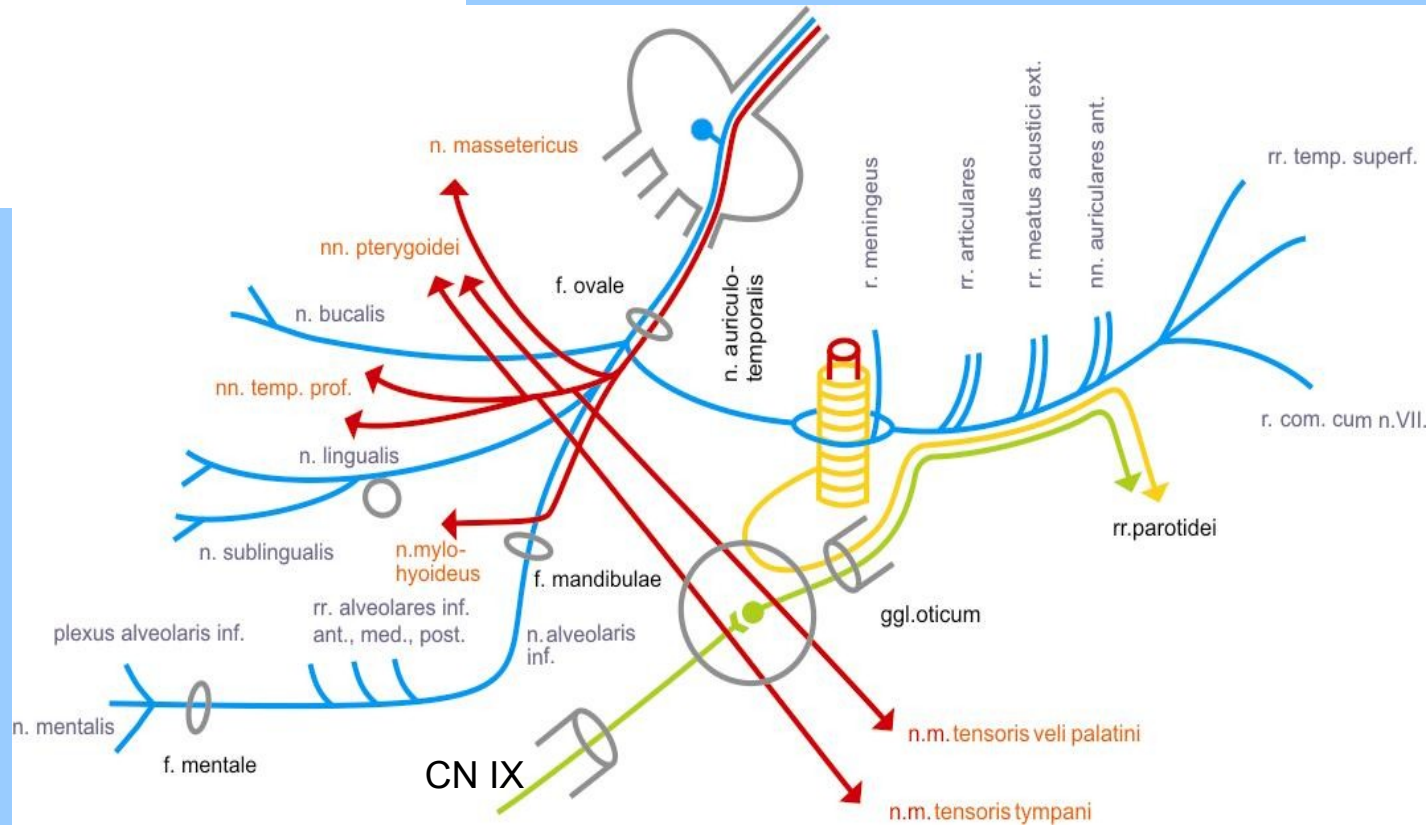
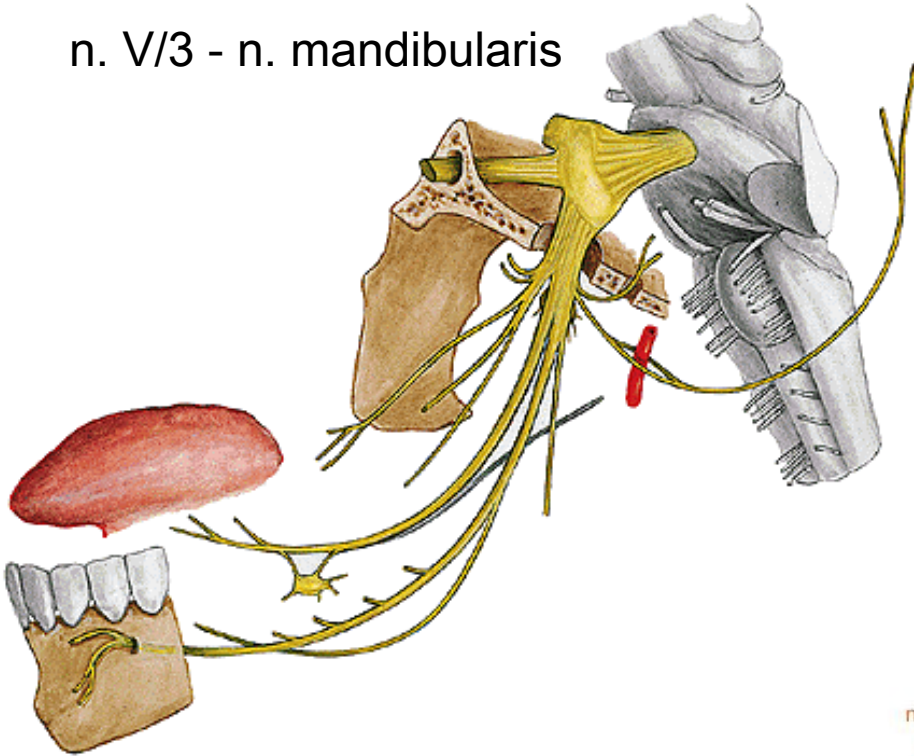
n. V/2 - n. maxillaris



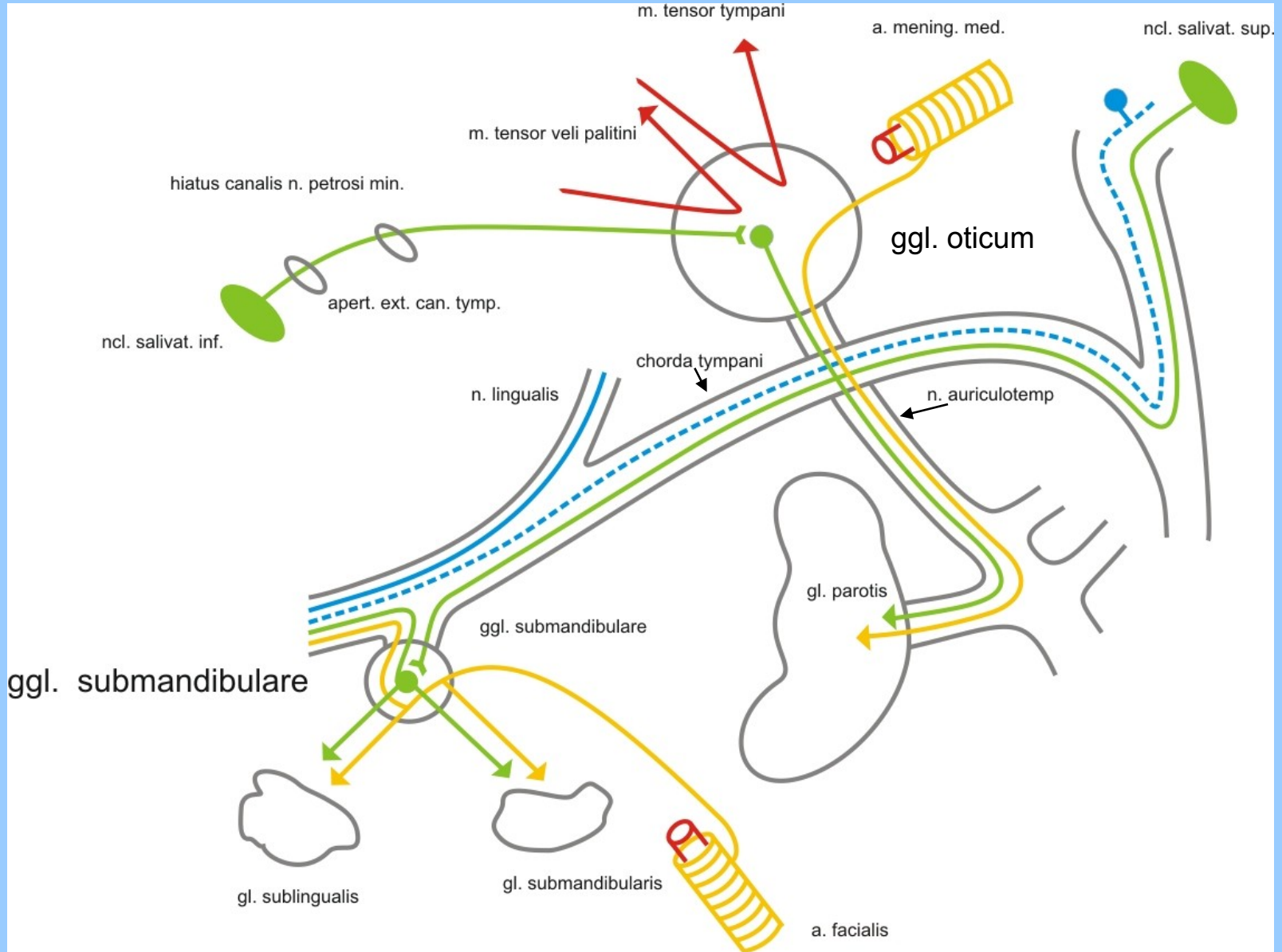
ggl. pterygopalatinum



n. V/3 - n. mandibularis

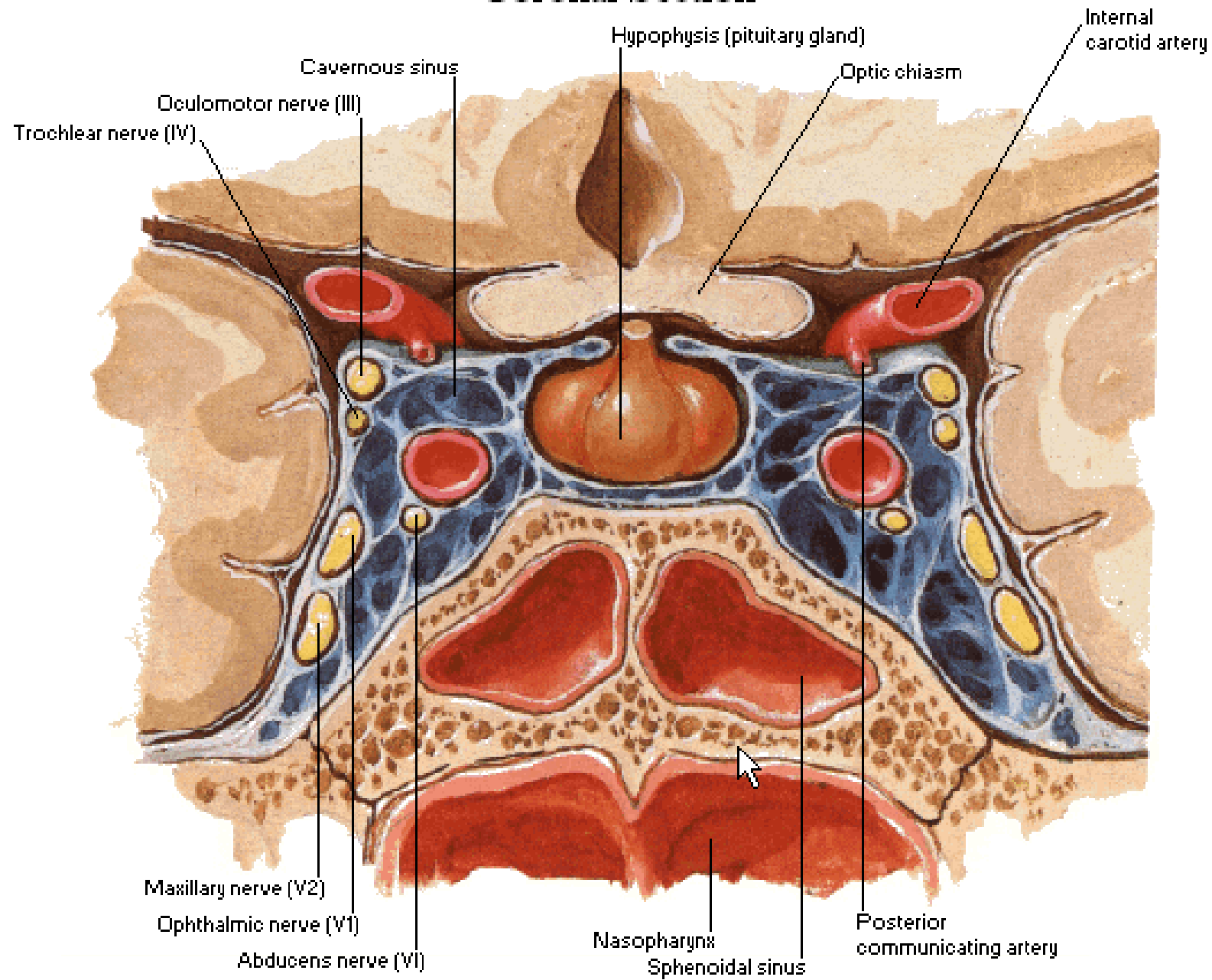


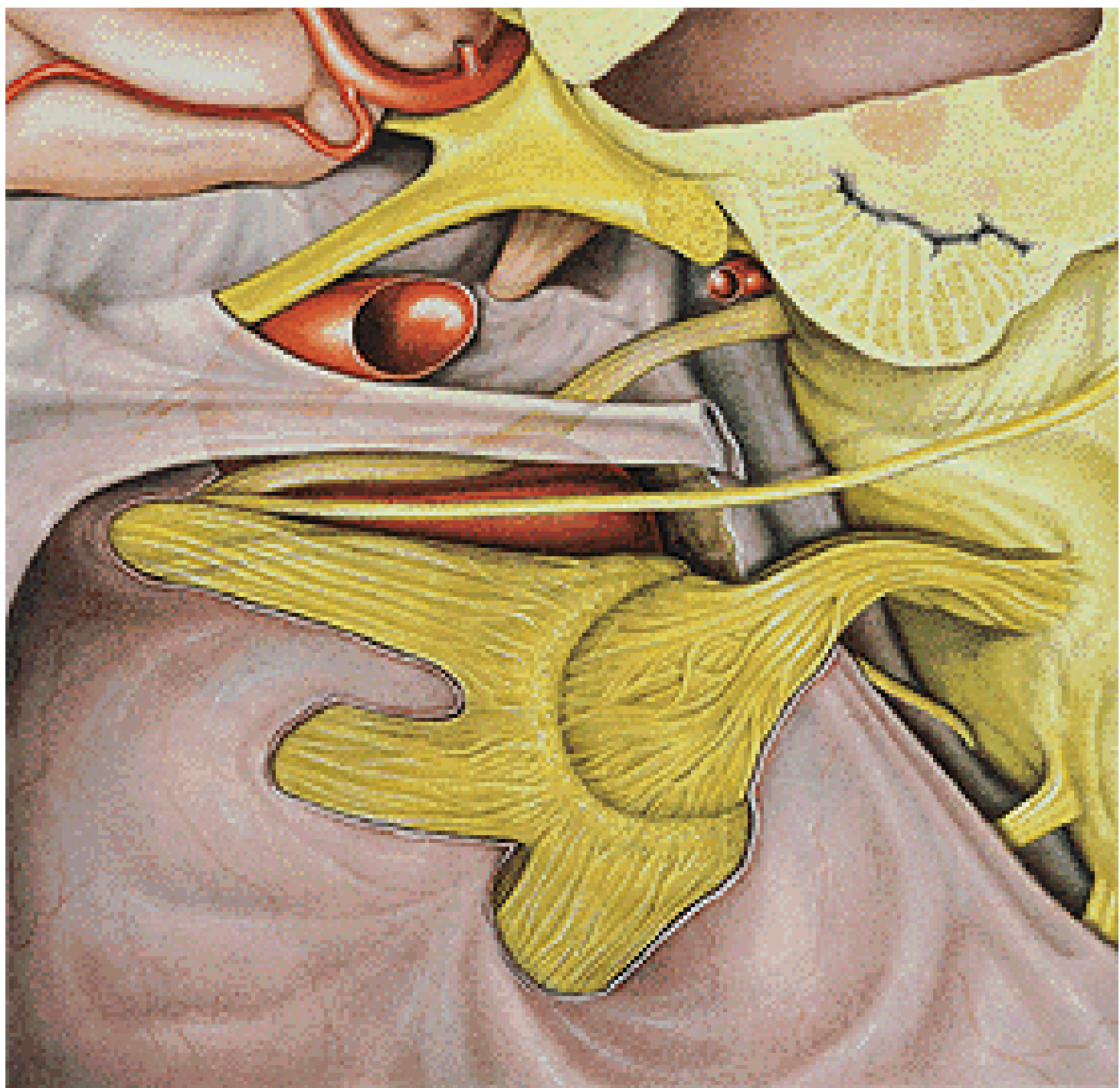
Ggl. oticum et submandibulare

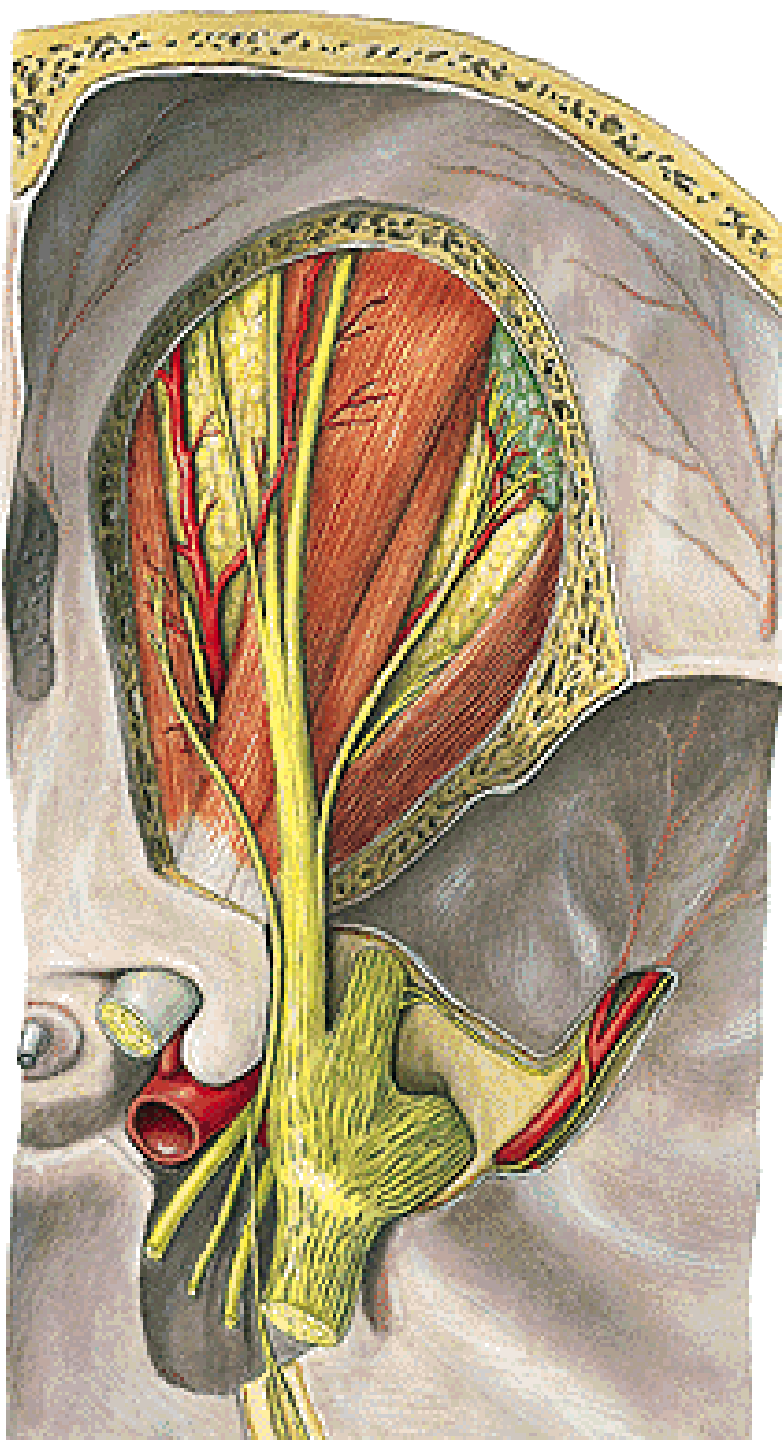


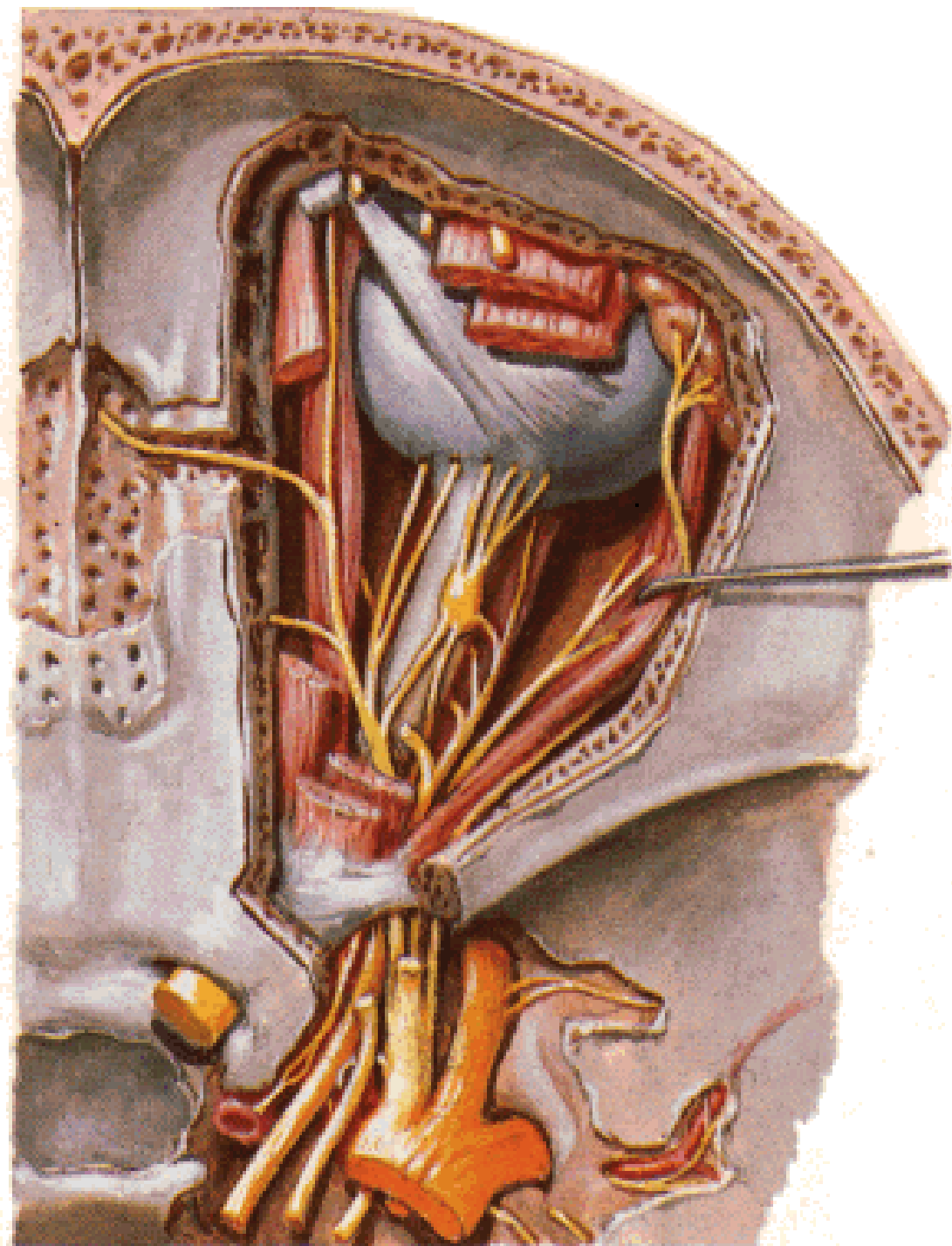
Cavernous Sinus

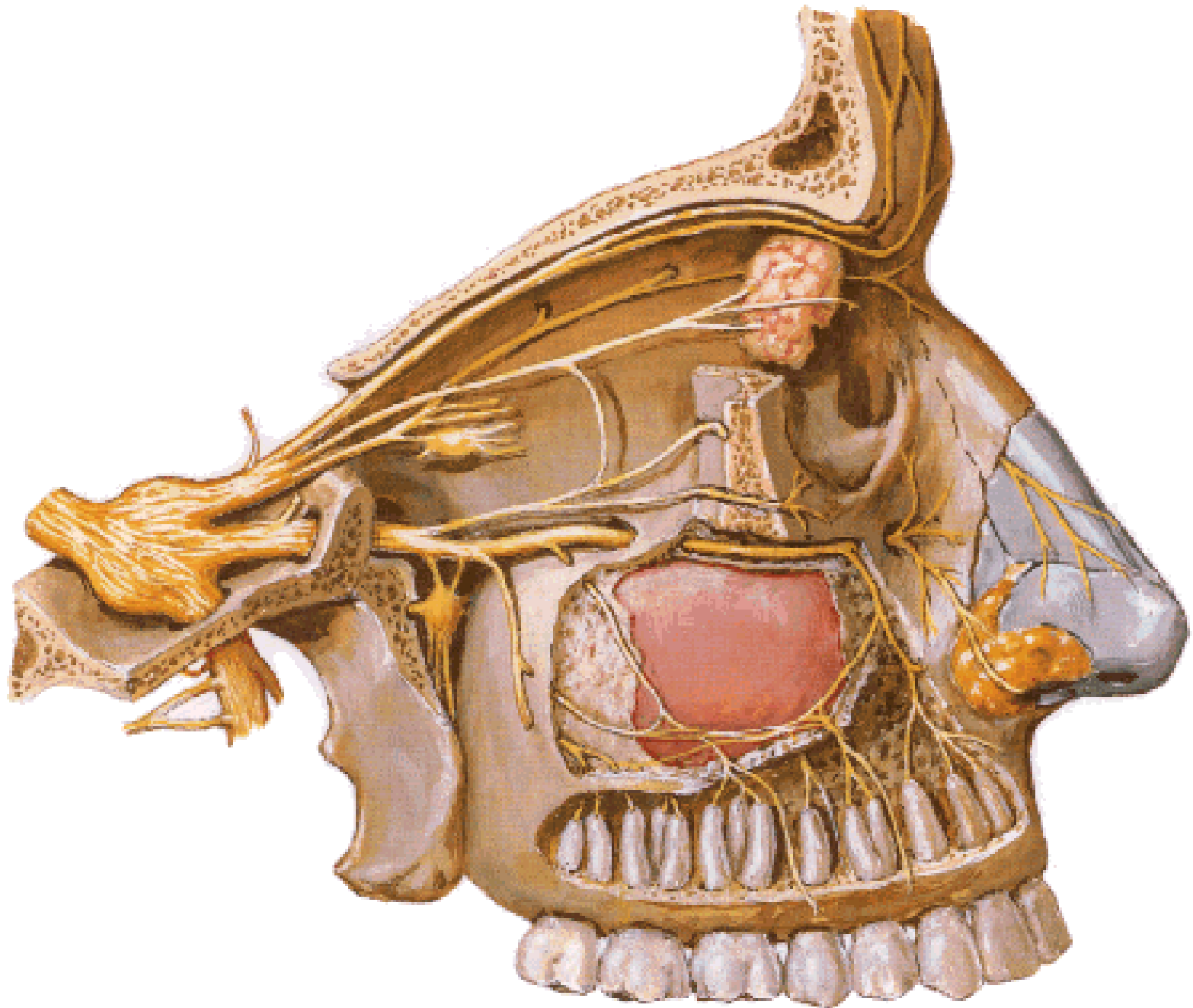
Coronal Section

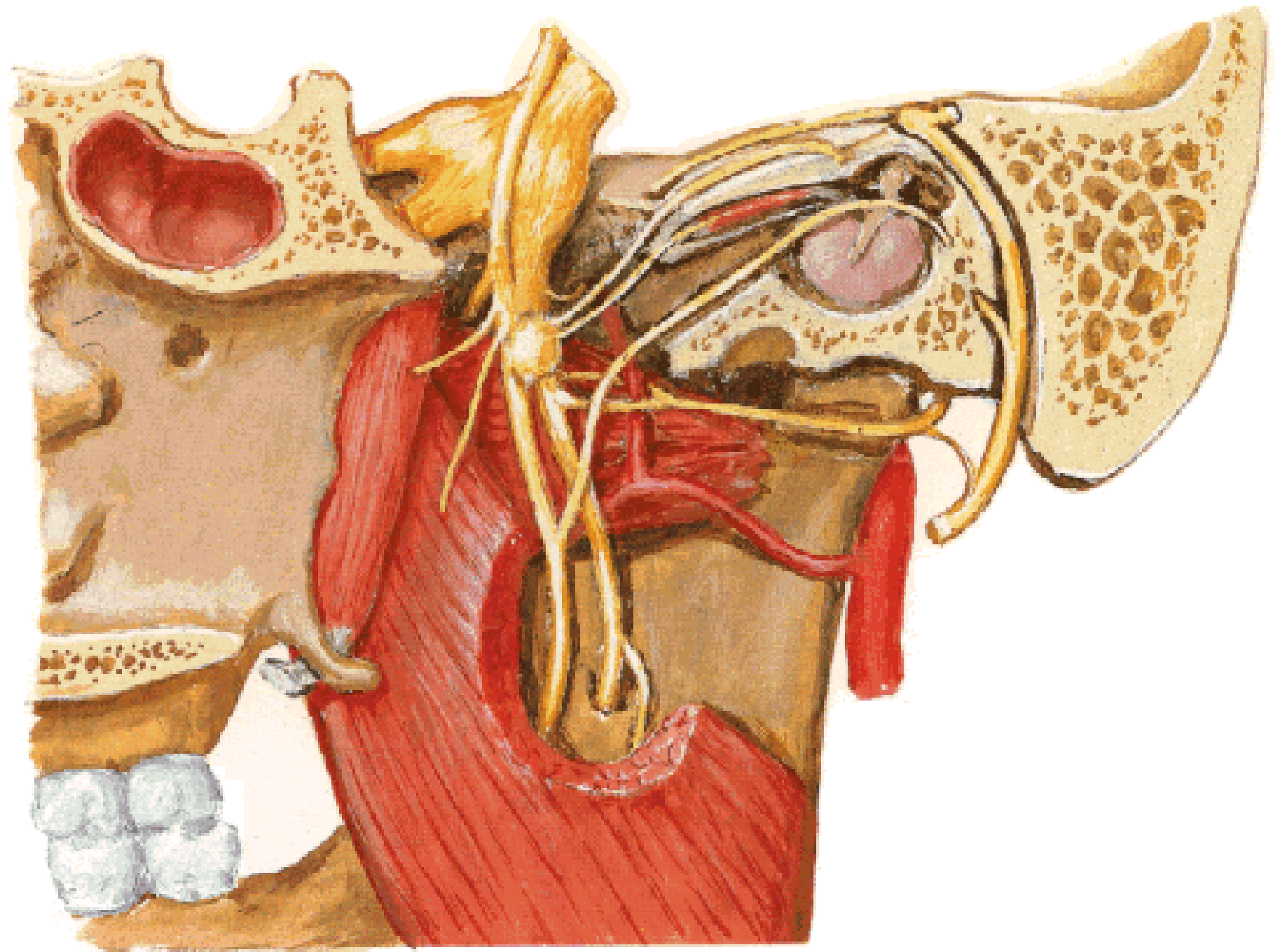




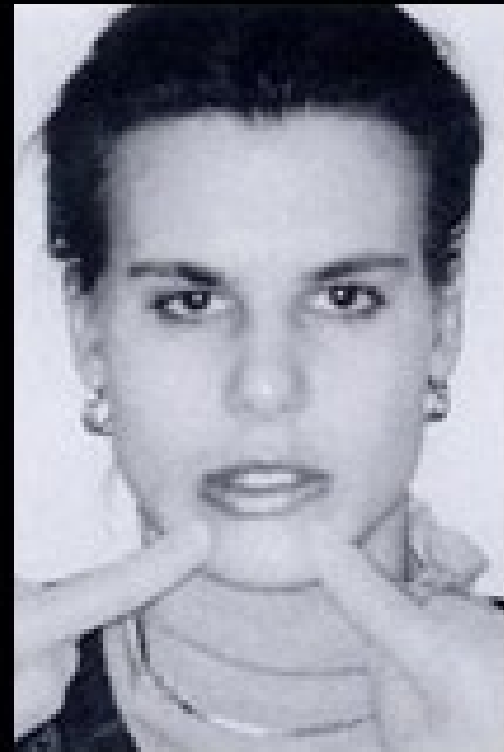


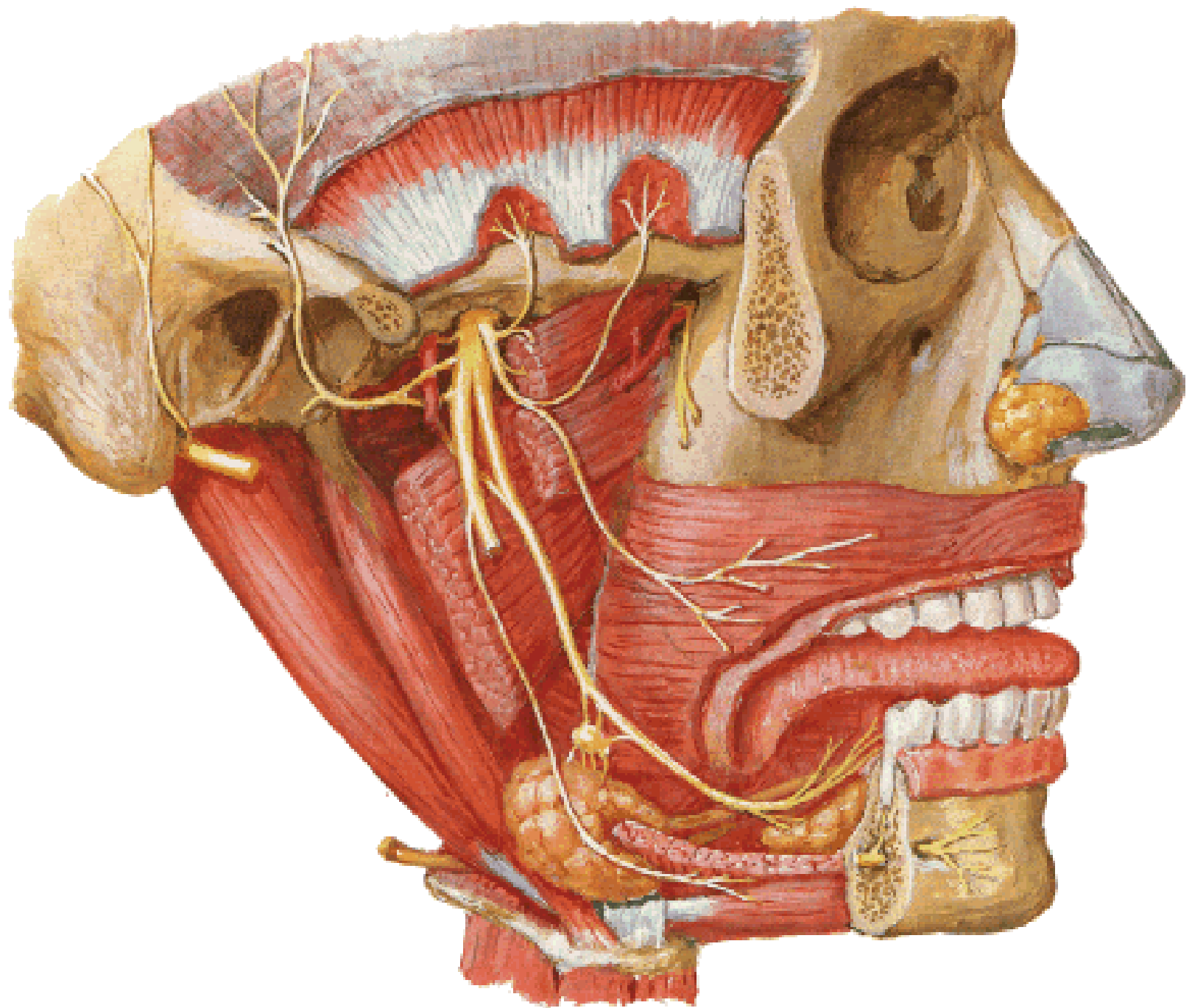


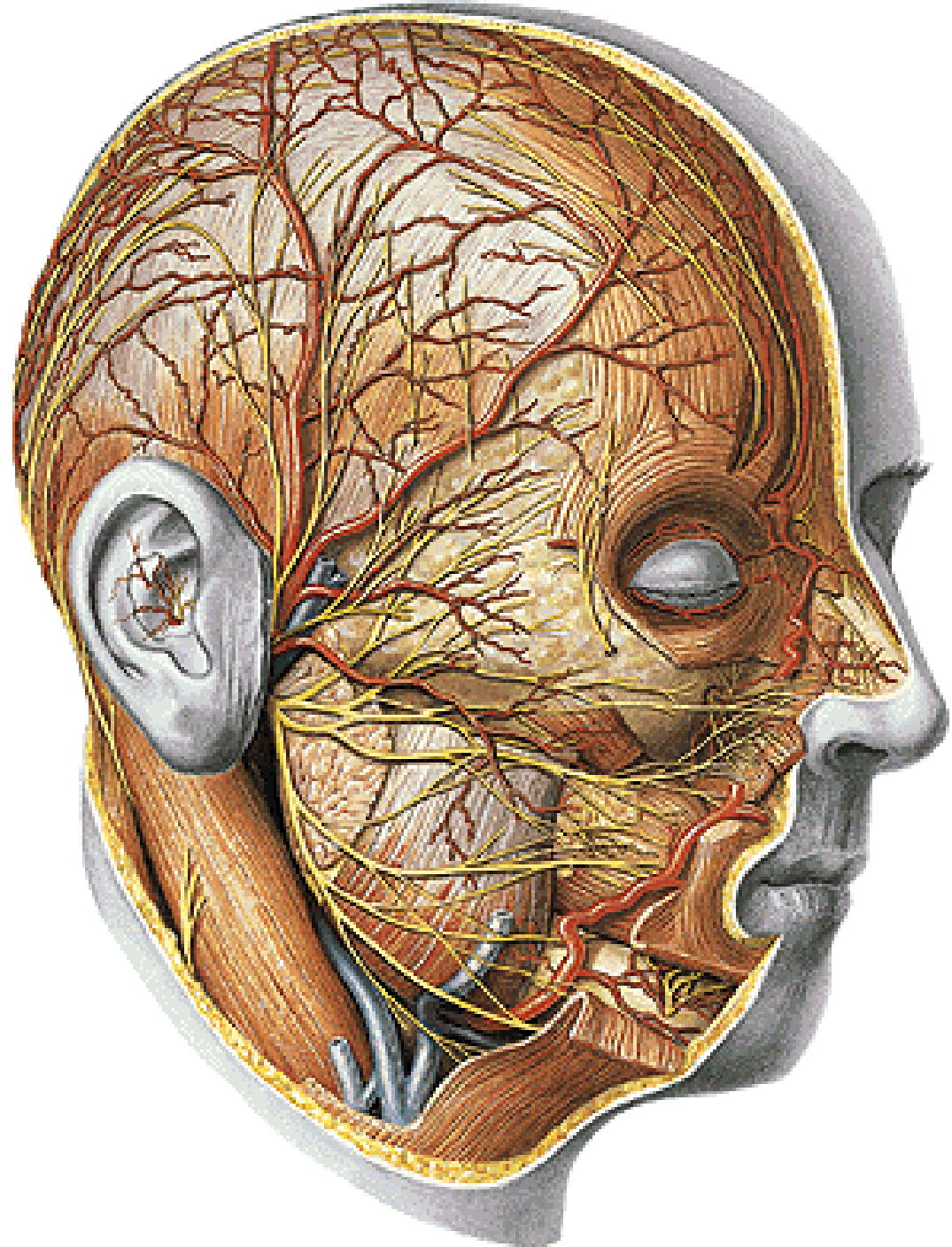


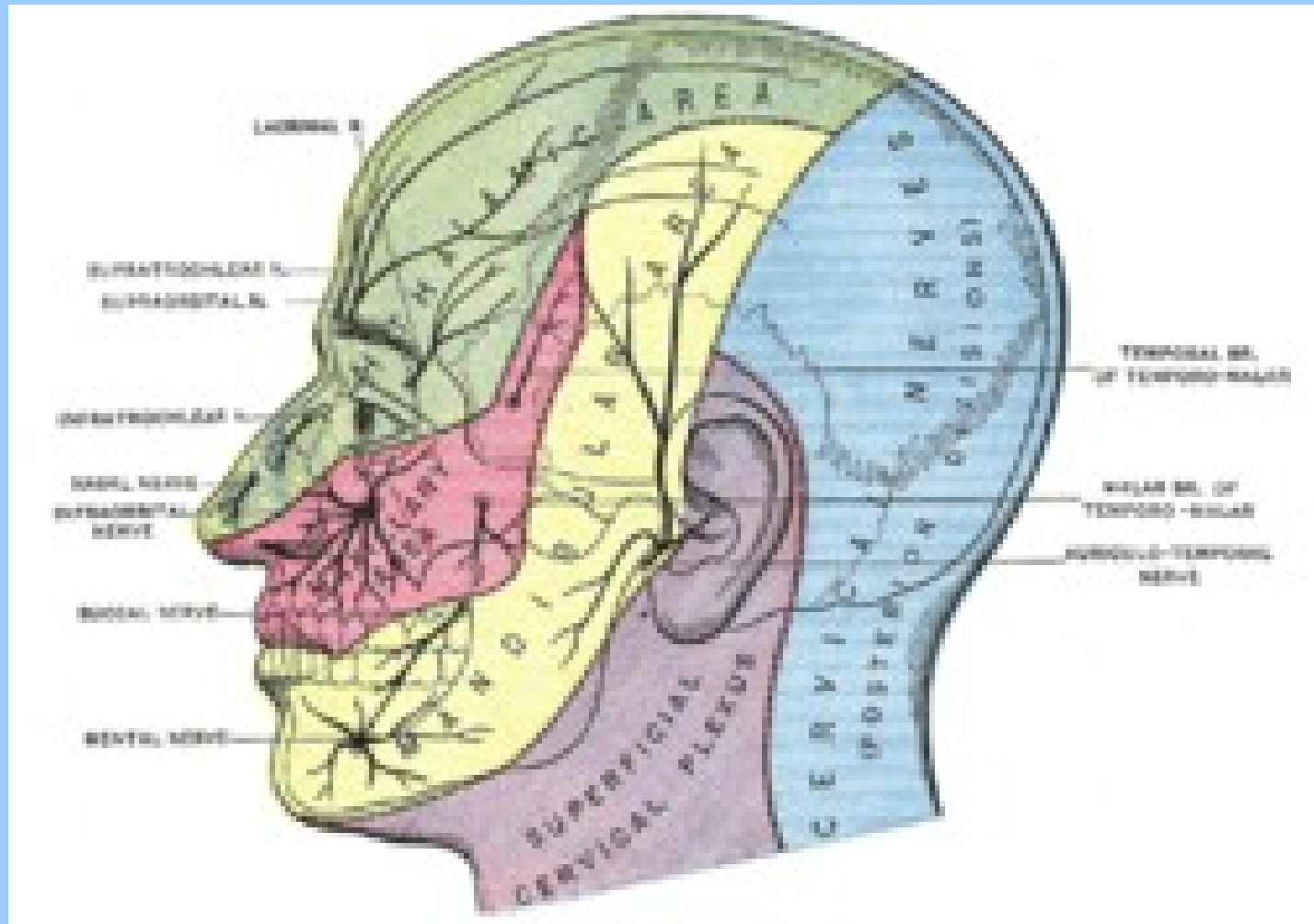


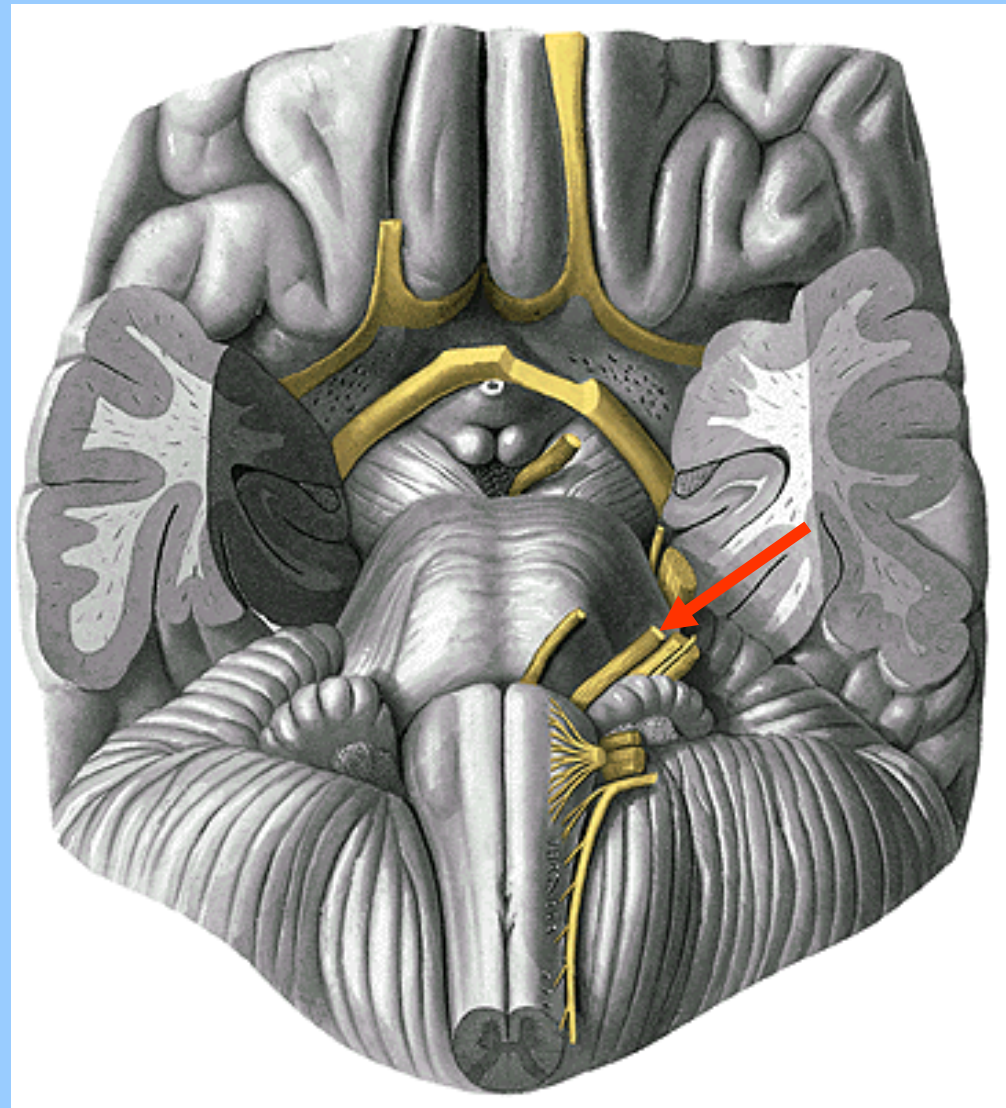
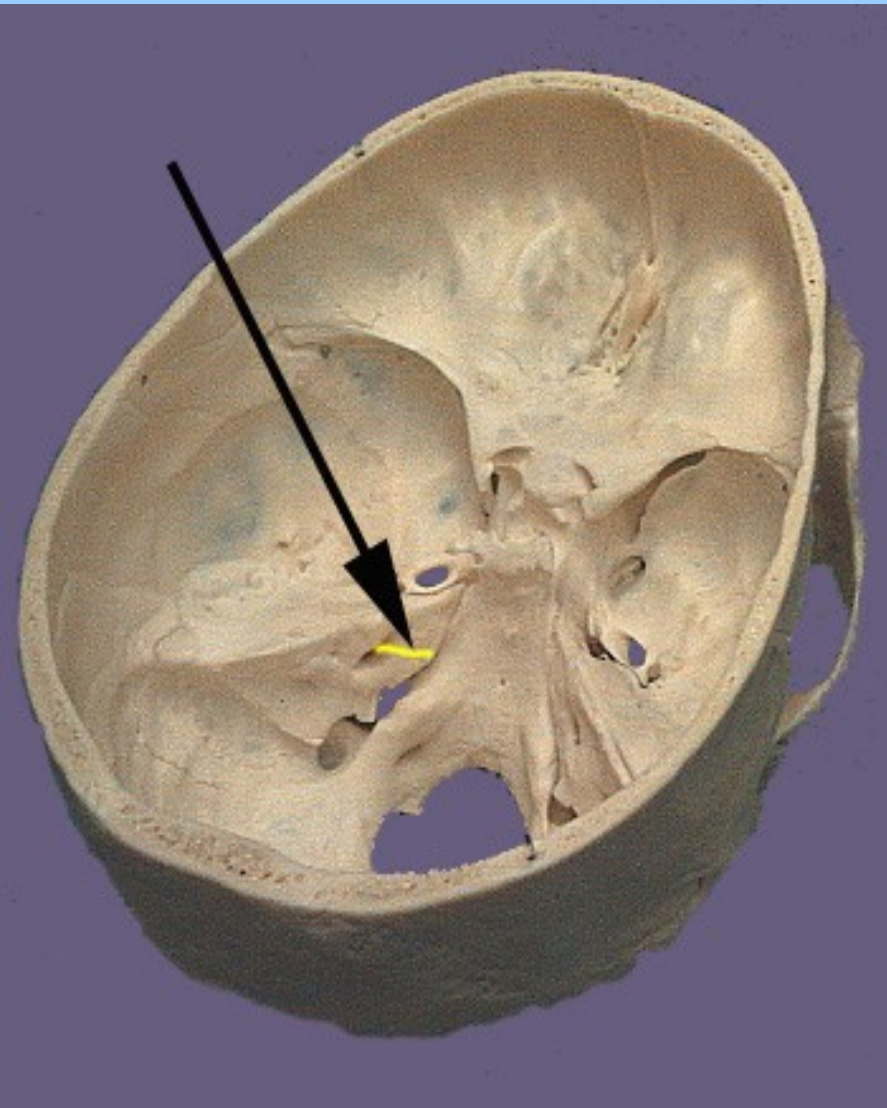
Výstupy 3 hlavních větví n. V.



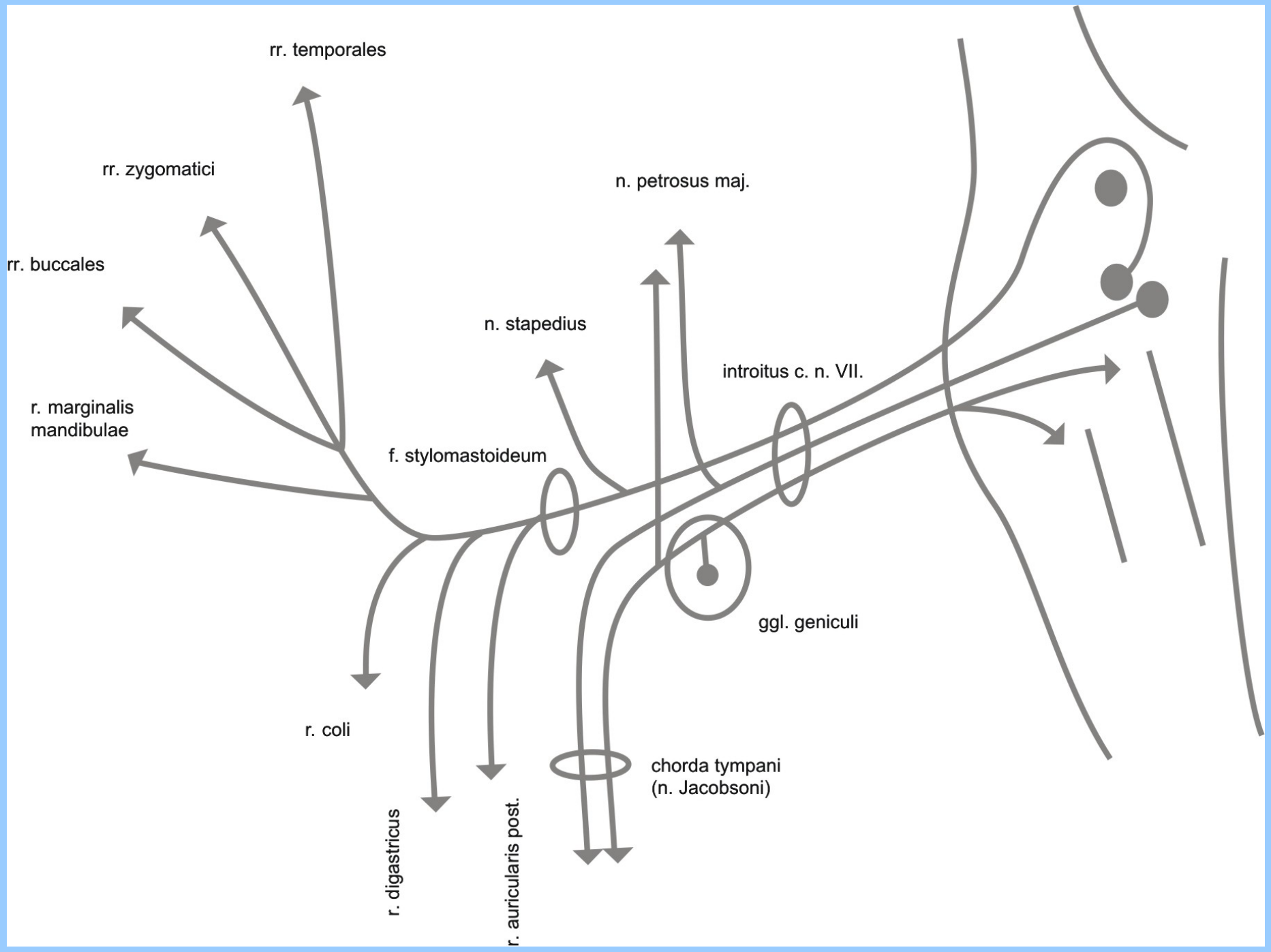








n. VII.



rr. temporales

rr. zygomatici

rr. buccales

r. marginalis mandibulae

f. stylomastoideum

r. coli

r. digastricus

r. auricularis post.

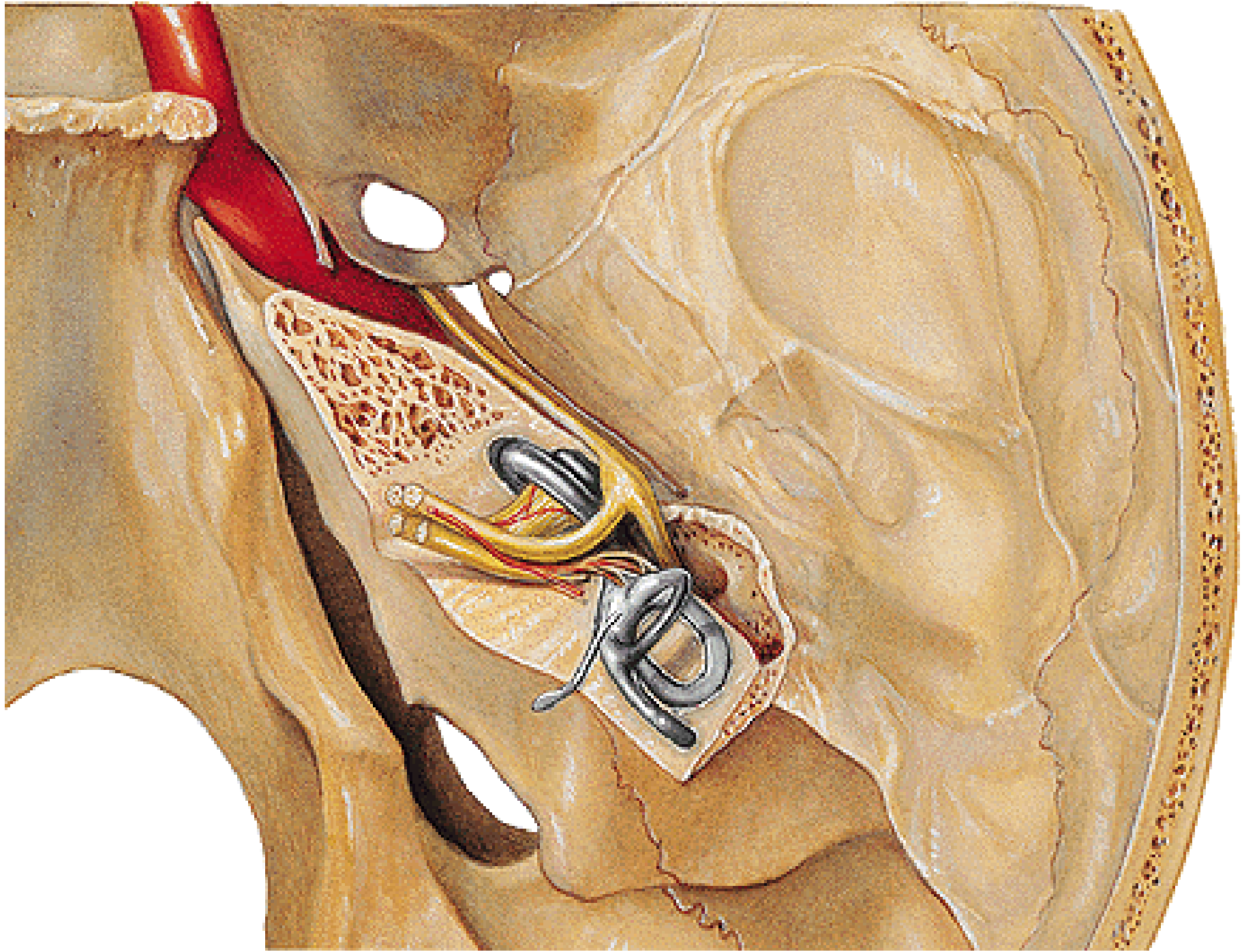
n. petrosus maj.

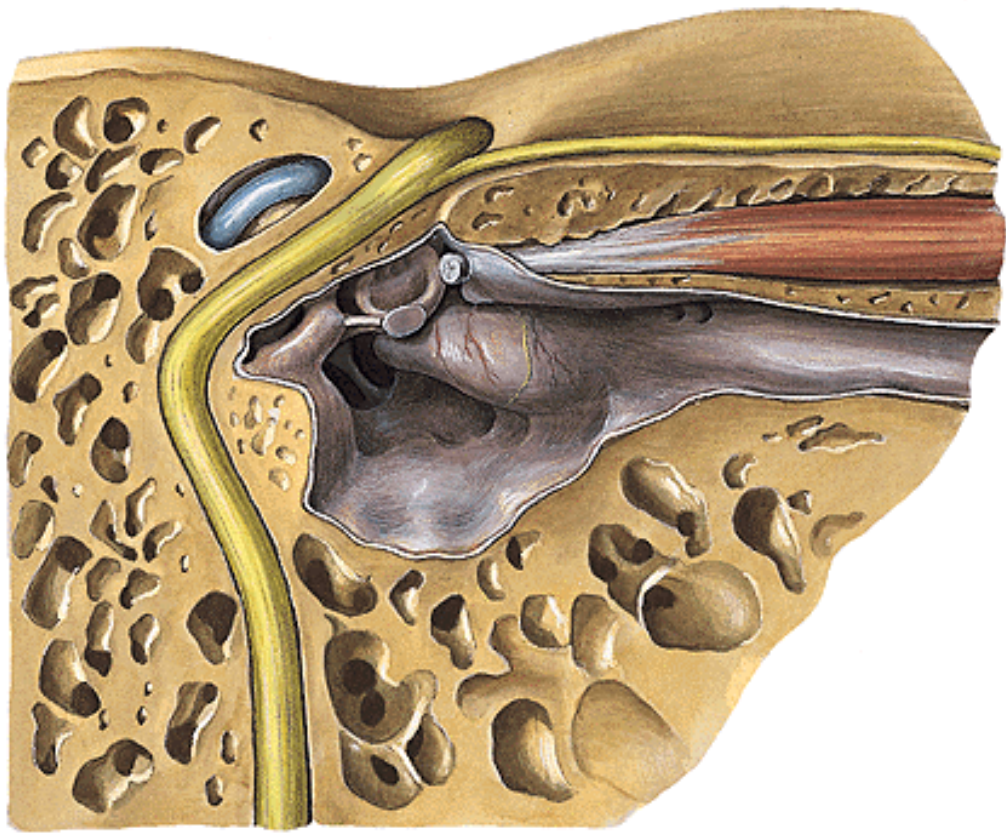
n. stapedius

introitus c. n. VII.

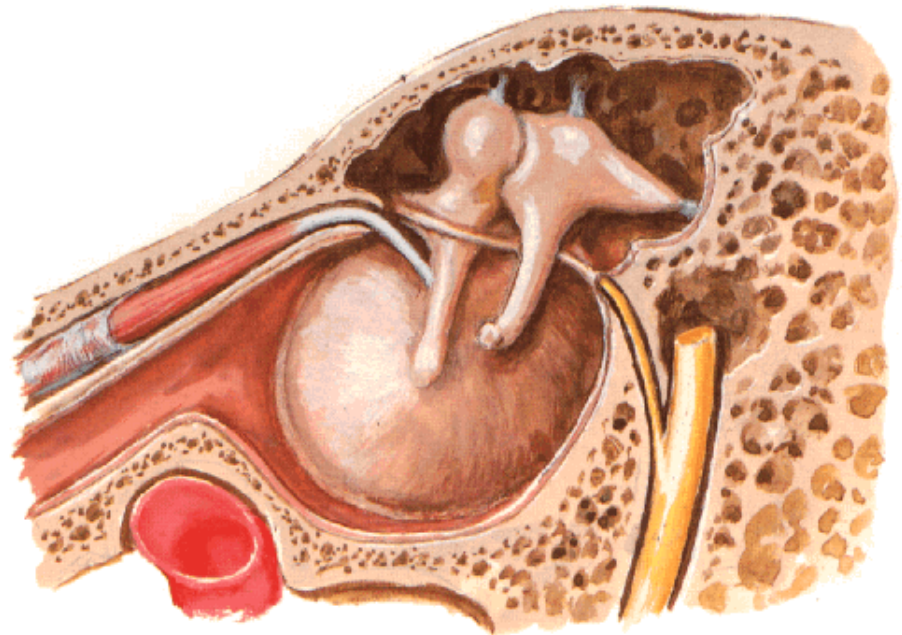
ggl. geniculi

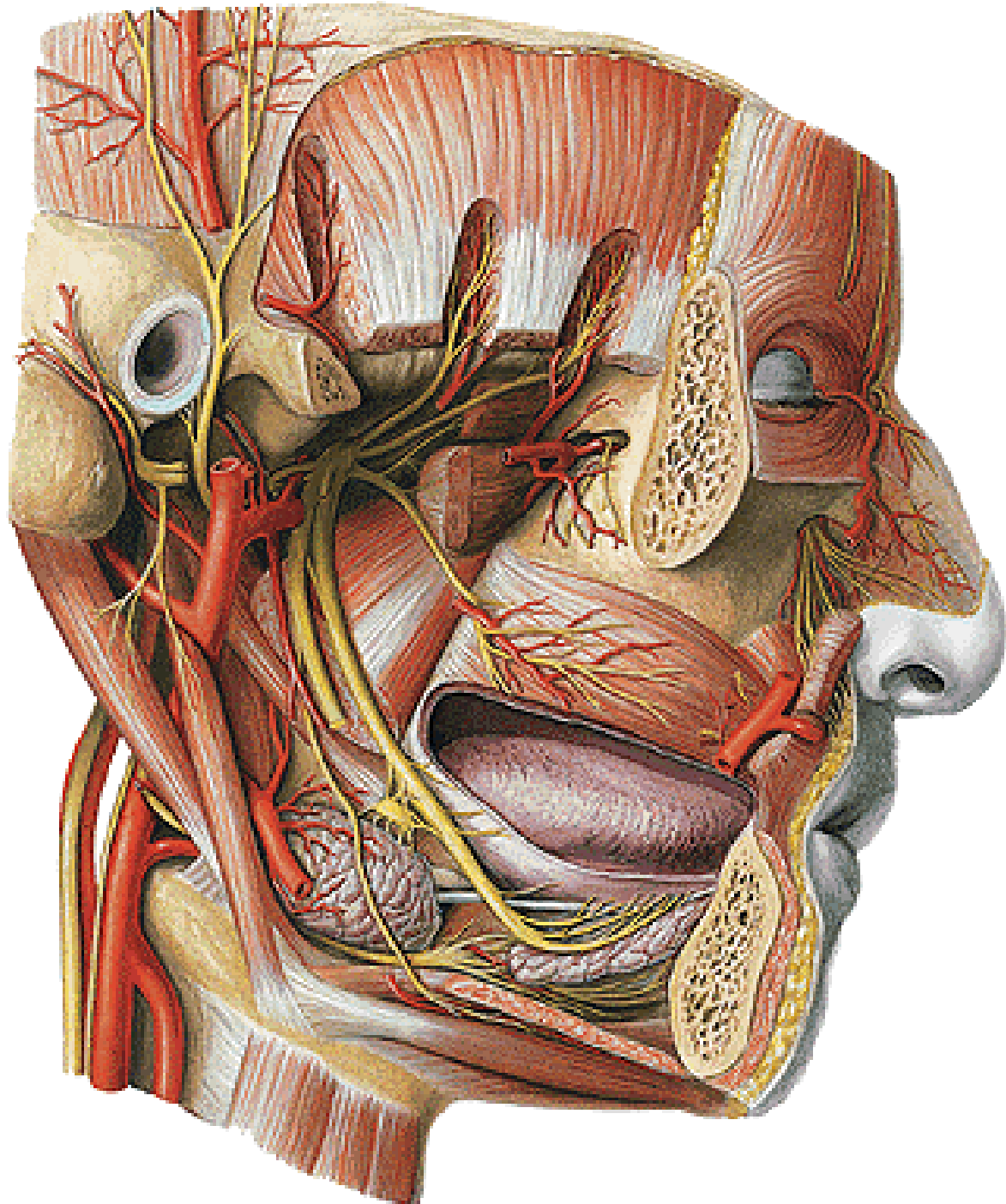
chorda tympani (n. Jacobsoni)

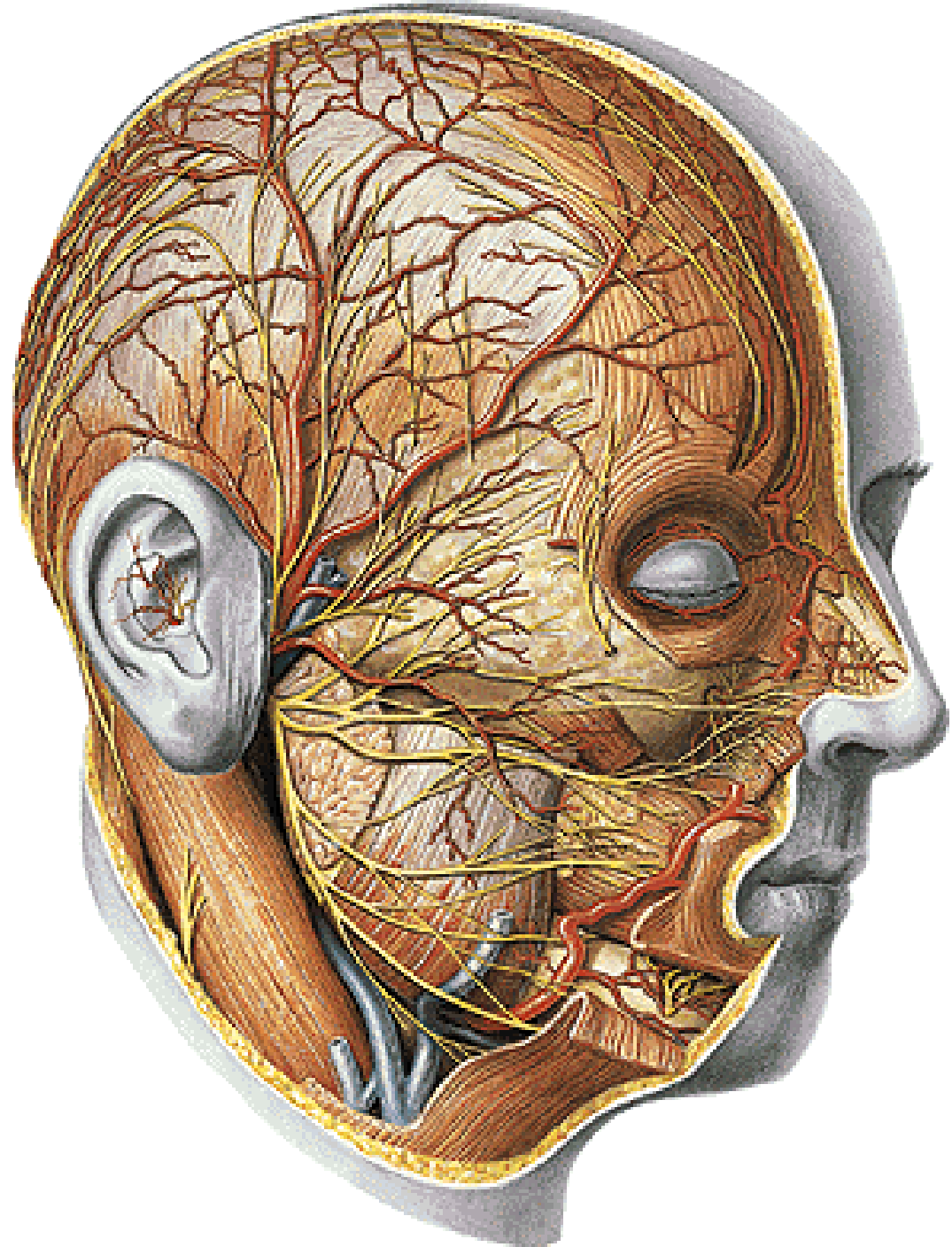




Tympanic Cavity - Lateral Wall
Medial View







- Illustrations were copied from:
- **Atlas der Anatomie des Menschen/
Sobotta. Putz,R., und Pabst,R. 20.
Auflage. München: Urban &
Schwarzenberg, 1993**
- **Netter: Interactive Atlas of Human
Anatomy. Windows Version 2.0**