

ORGANUM

VESTIBULOCOCHLEARE

ORGANUM VESTIBULOCOCHLEARE

Auris externa

Auricula

Meatus acusticus externus

Membrana tympani

Auris media

Cavitas tympani

Ossicula auditus

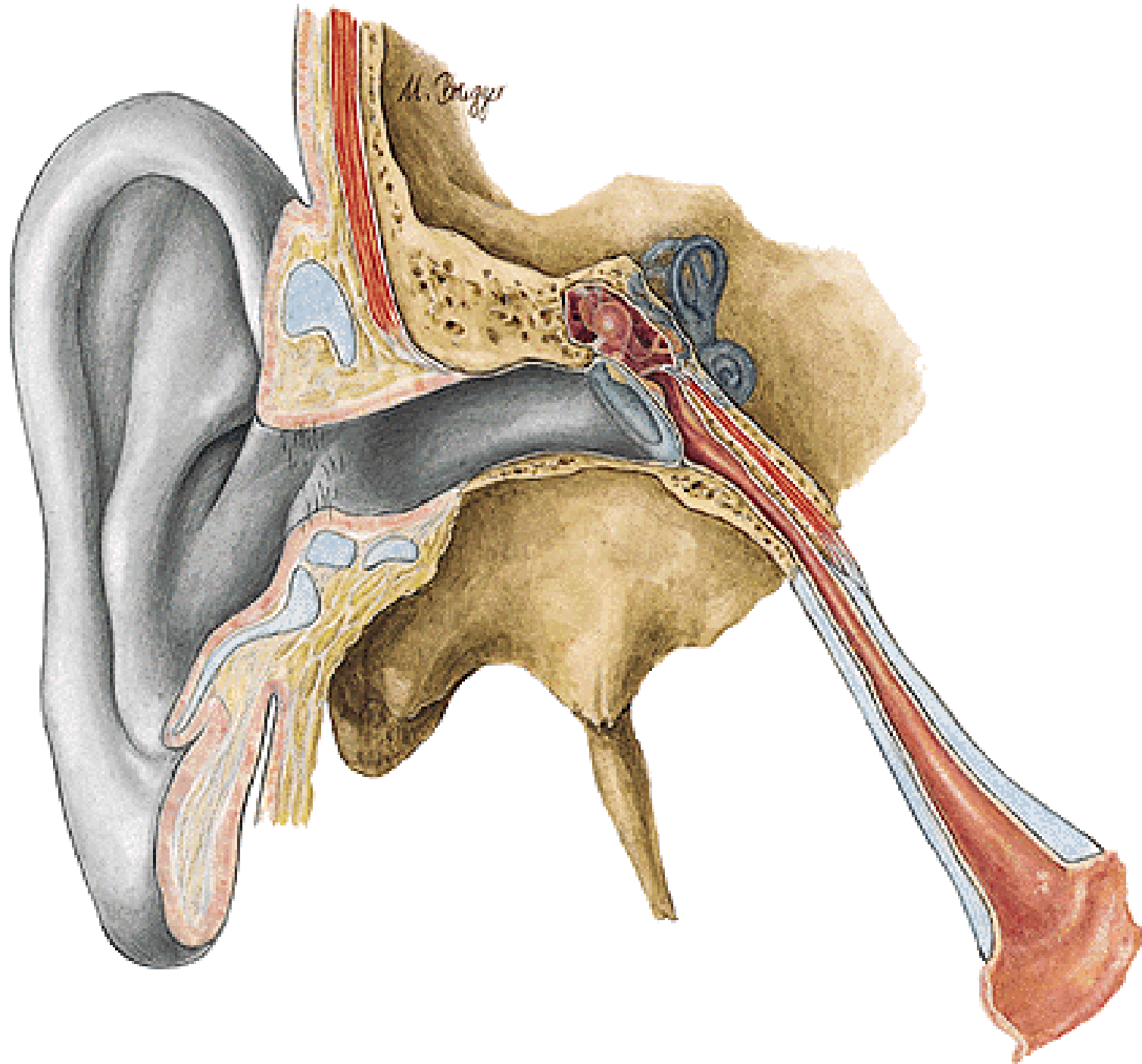
Cellulae mastoideae

Tuba auditiva

Auris interna

Labyrinthus osseus

Labyrinthus membranaceus



AURICULA

HELIX - CRUS

TUBERCULUM AURICULAE

ANTHELIX

CRURA ANTHELICIA

FOSSA TRIANGULARIS

SCAPHA

CONCHA AURICULAE

- CYMBA CONCHAE

- CAVUM CONCHAE

TRAGUS

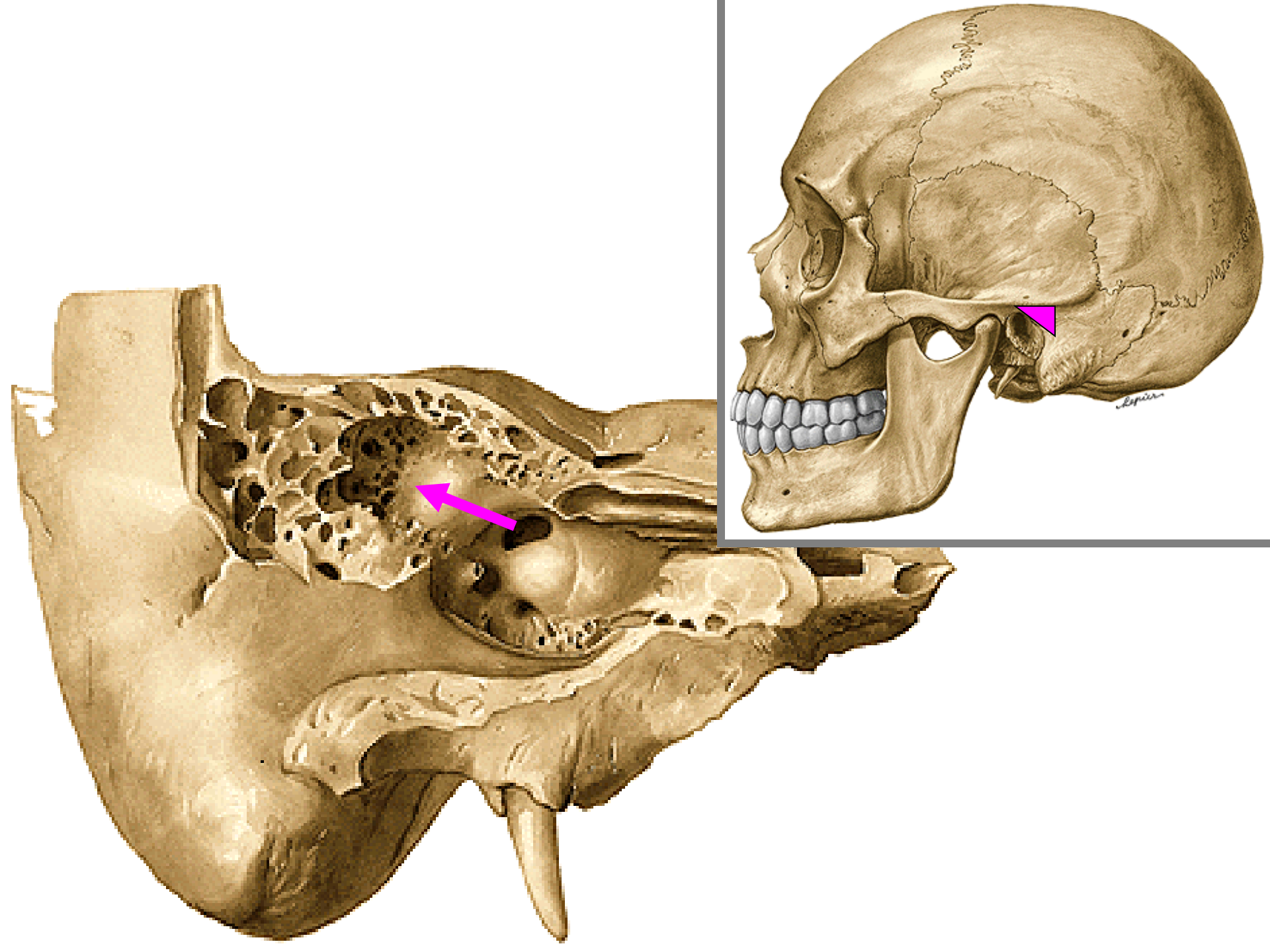
ANTITRAGUS

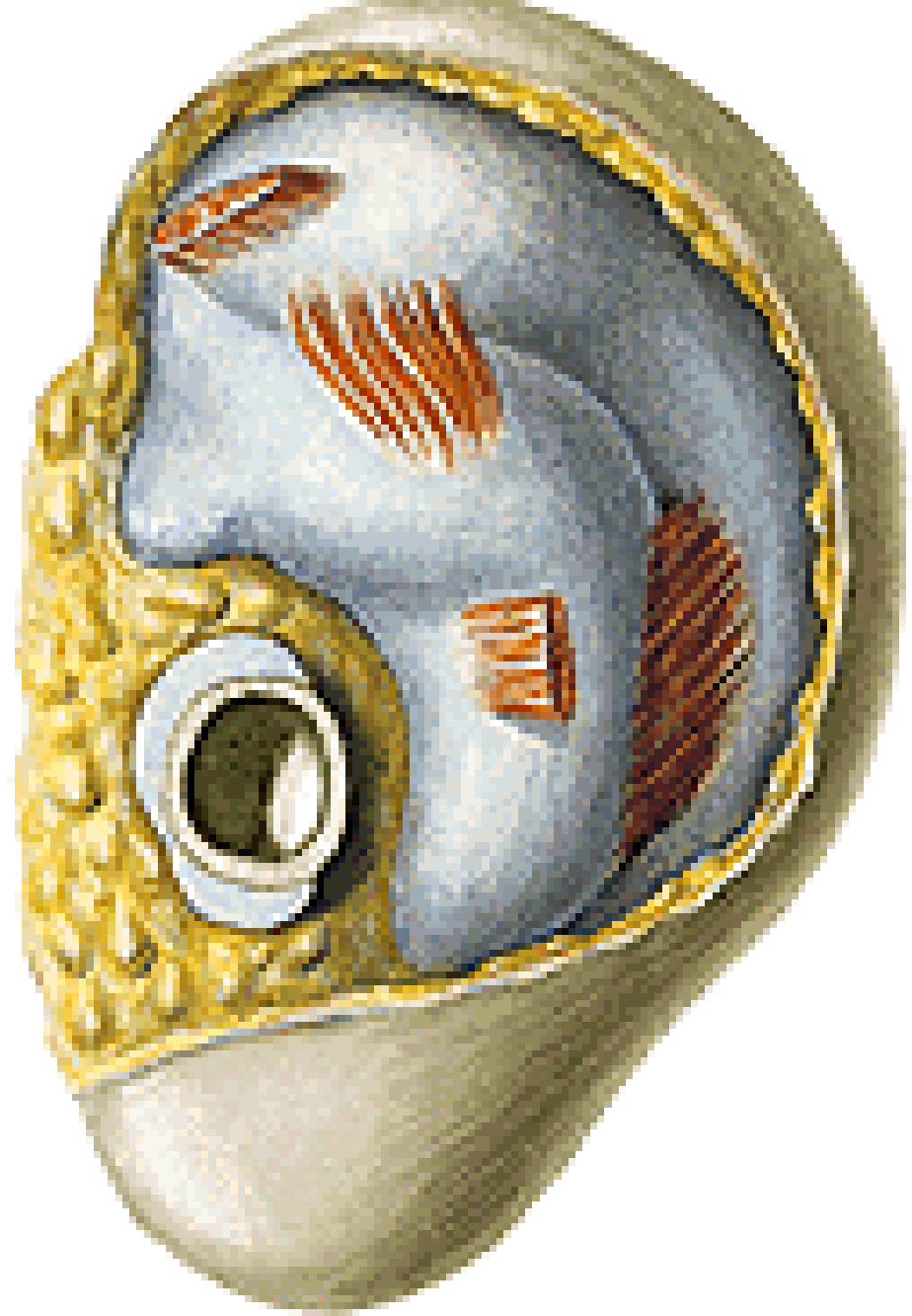
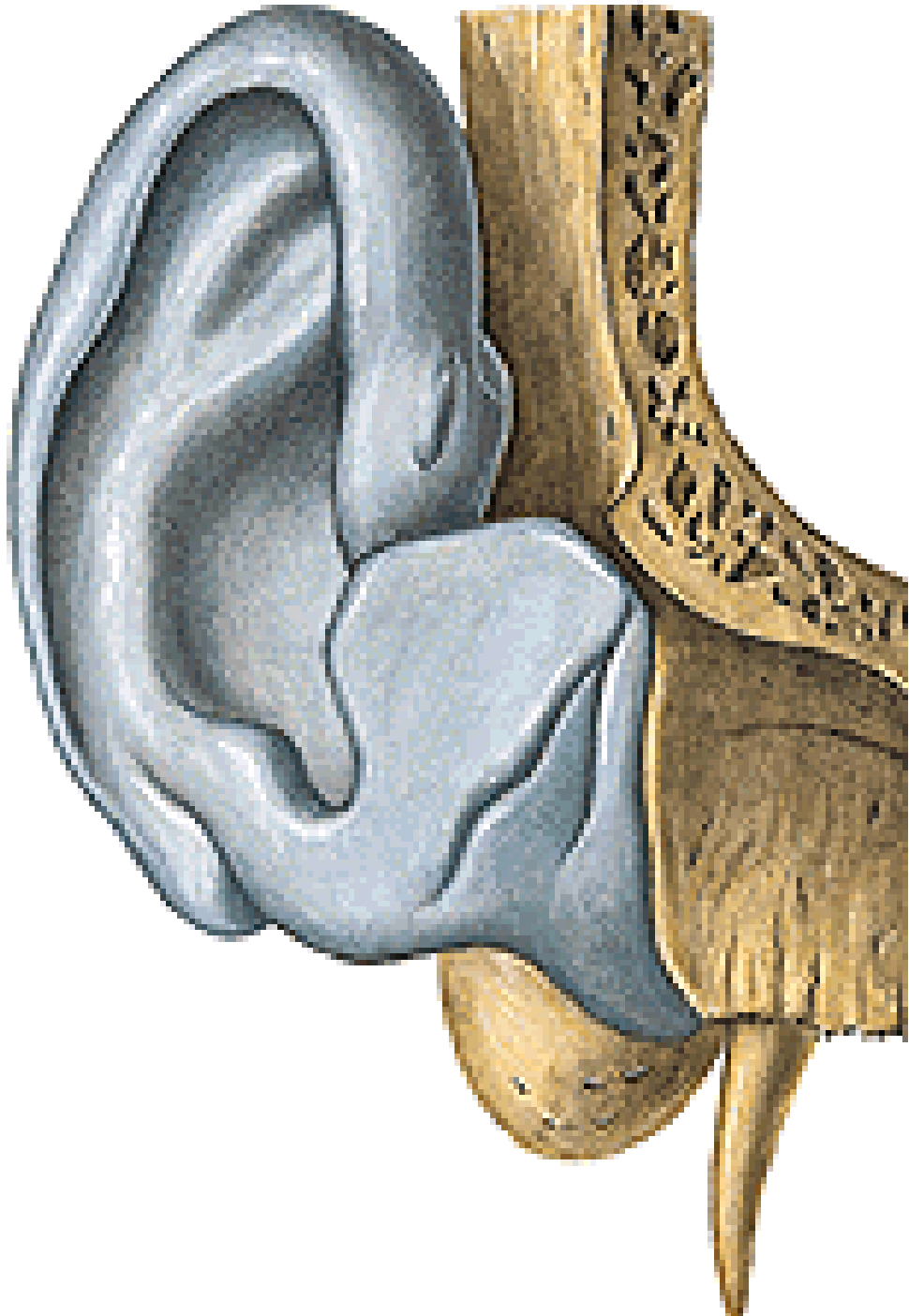
INCISURA INTERTRAGICA

LOBULUS AURICULAE

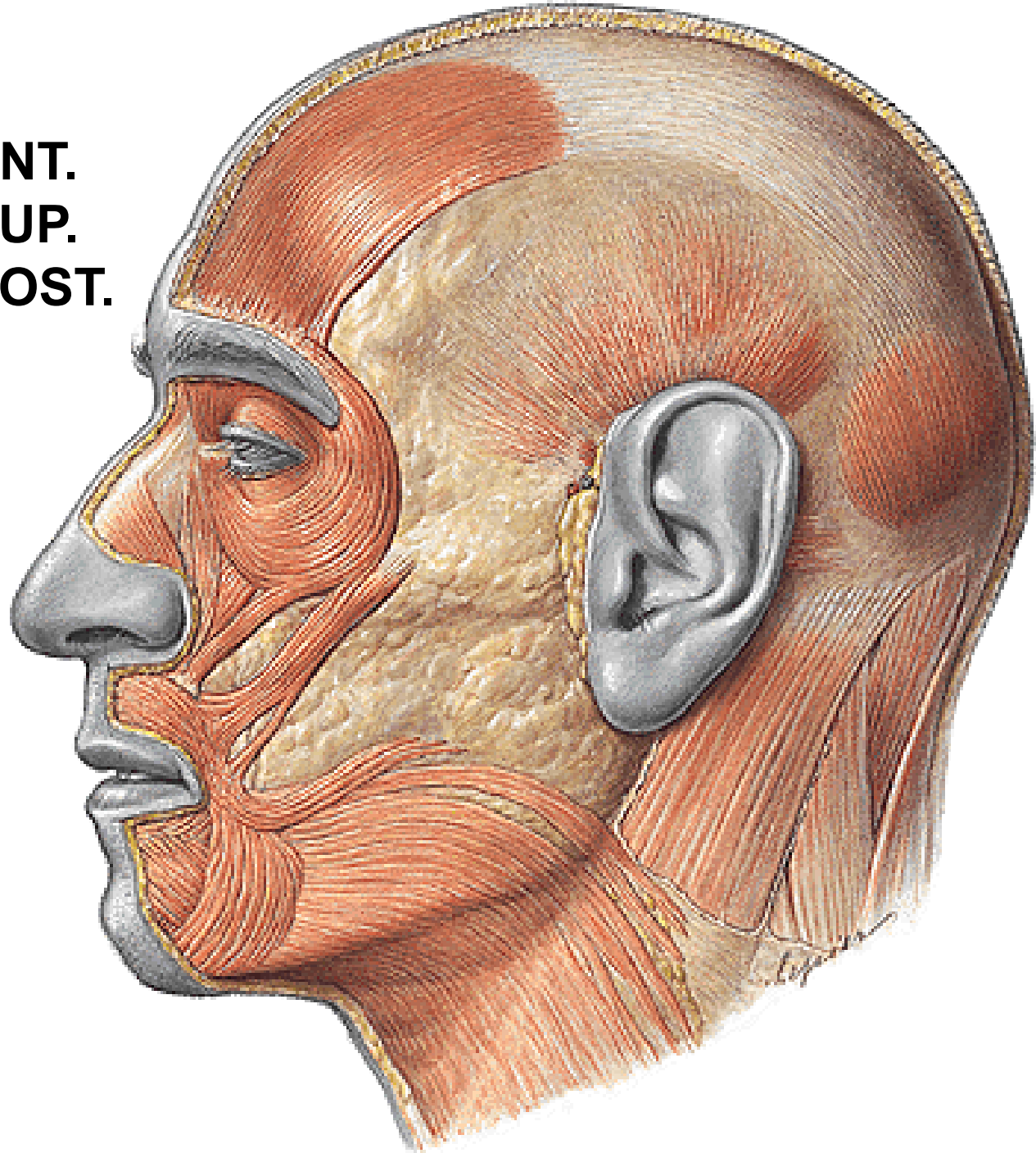


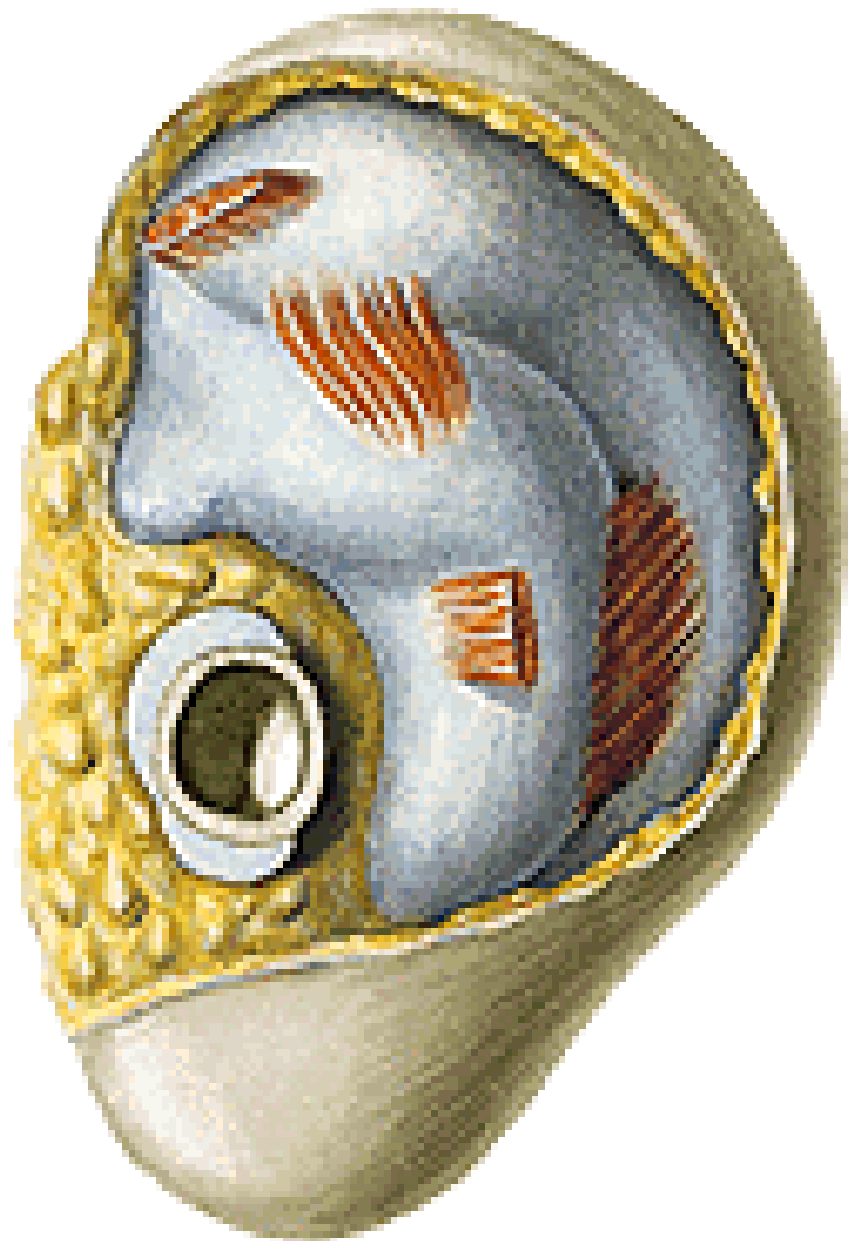
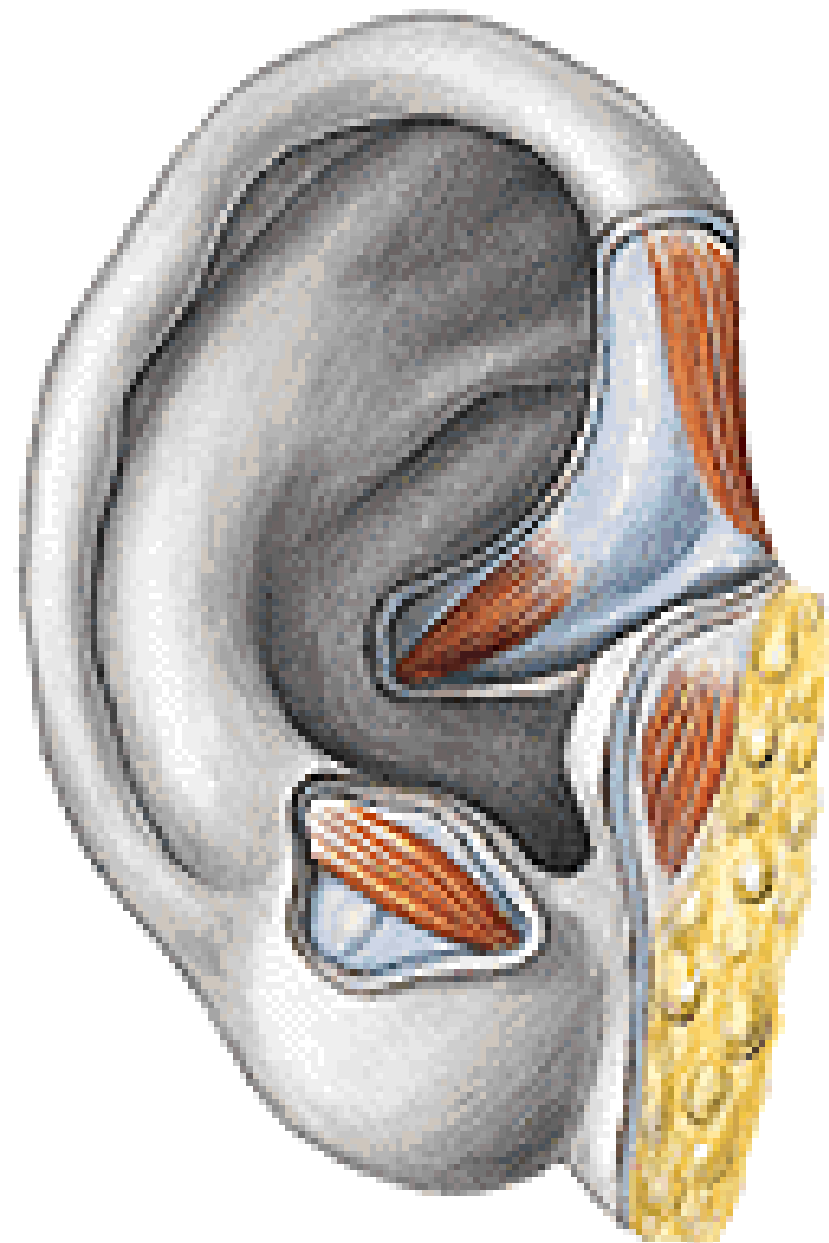






M. AURICULARIS ANT.
M. AURICULARIS SUP.
M. AURICULARIS POST.





AURICULA:

A. AURICULARIS POSTERIOR

RR. AURICULARES ANTERIORES A. TEMPORALIS SPF.

A. OCCIPITALIS

NODI LYMPH. PAROTIDEI

NODI LYMPH. MASTOIDEI

NODI LYMPH. CERVICALES PROFUNDI

N. AURICULARIS MAGNUS

N. OCCIPITALIS MINOR

R. AURICULARIS N. VAGI

N. AURICULOTEMPORALIS

N. FACIALIS

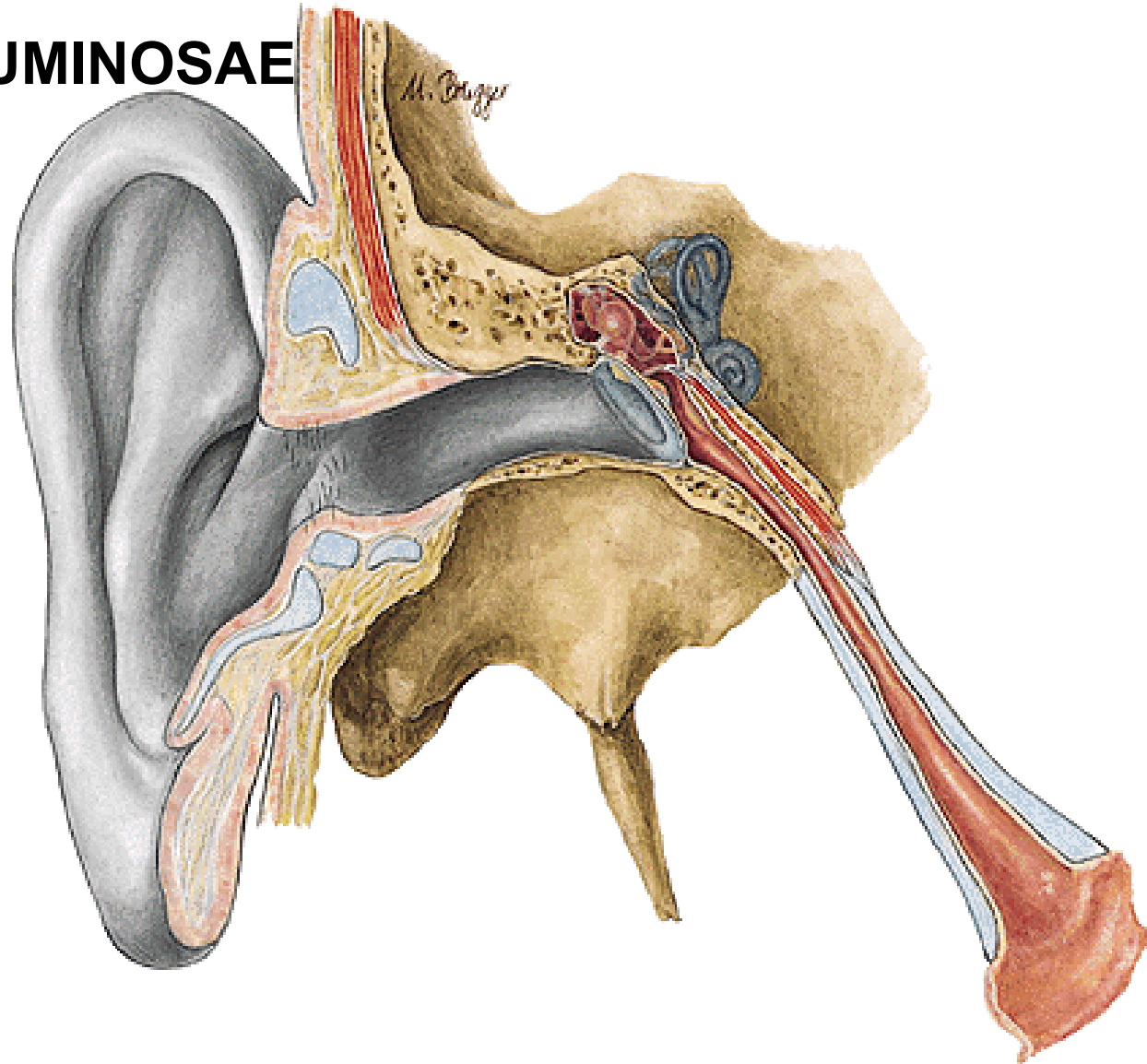
MEATUS ACUSTICUS EXTERNUS

ISTHMUS

GLANDULAE CERUMINOSAE

CERUMEN

TRAGI



MEATUS ACUSTICUS EXTERNUS:

A. AURICULARIS POST.

RR. AURICULARES A. TEMPORALIS SPF.

V. JUGULARIS EXT.

V. MAXILLARIS

PLEXUS PTERYGOIDEUS

NODI LYMPH. PAROTIDEI

NODI LYMPH. MASTOIDEI

NODI LYMPH. CERVICALES PROFUNDI

N. AURICULOTEMPORALIS

R. AURICULARIS N. VAGI

MEMBRANA TYMPANI

External Ear

Right Tympanic Membrane

pars flaccida membranae tympani (membrana Shrapnelli)

plica mallearis anterior et posterior

prominentia mallearis

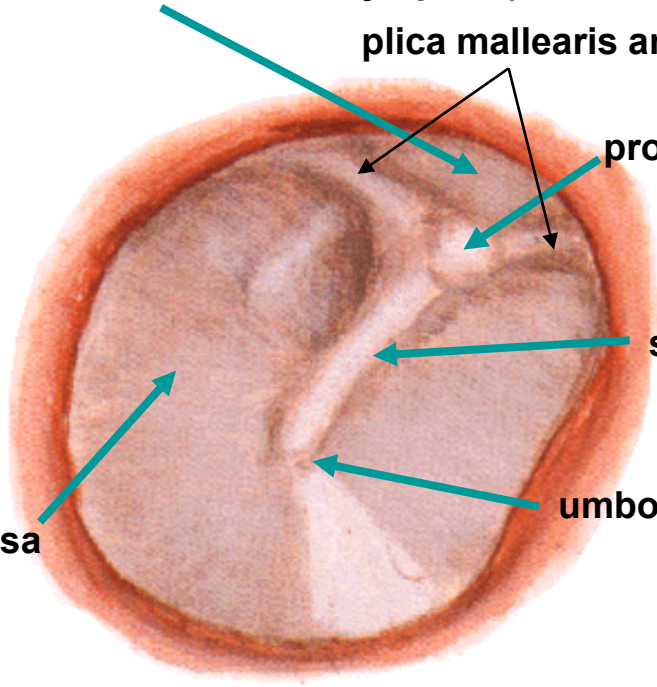
stria mallearis

umbo membranae tympani

pars tensa

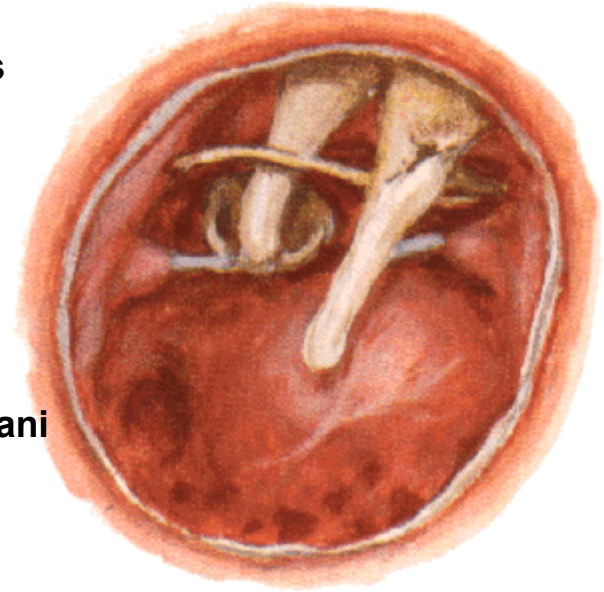
light reflex (trigonum Woodi)

Viewed through speculum

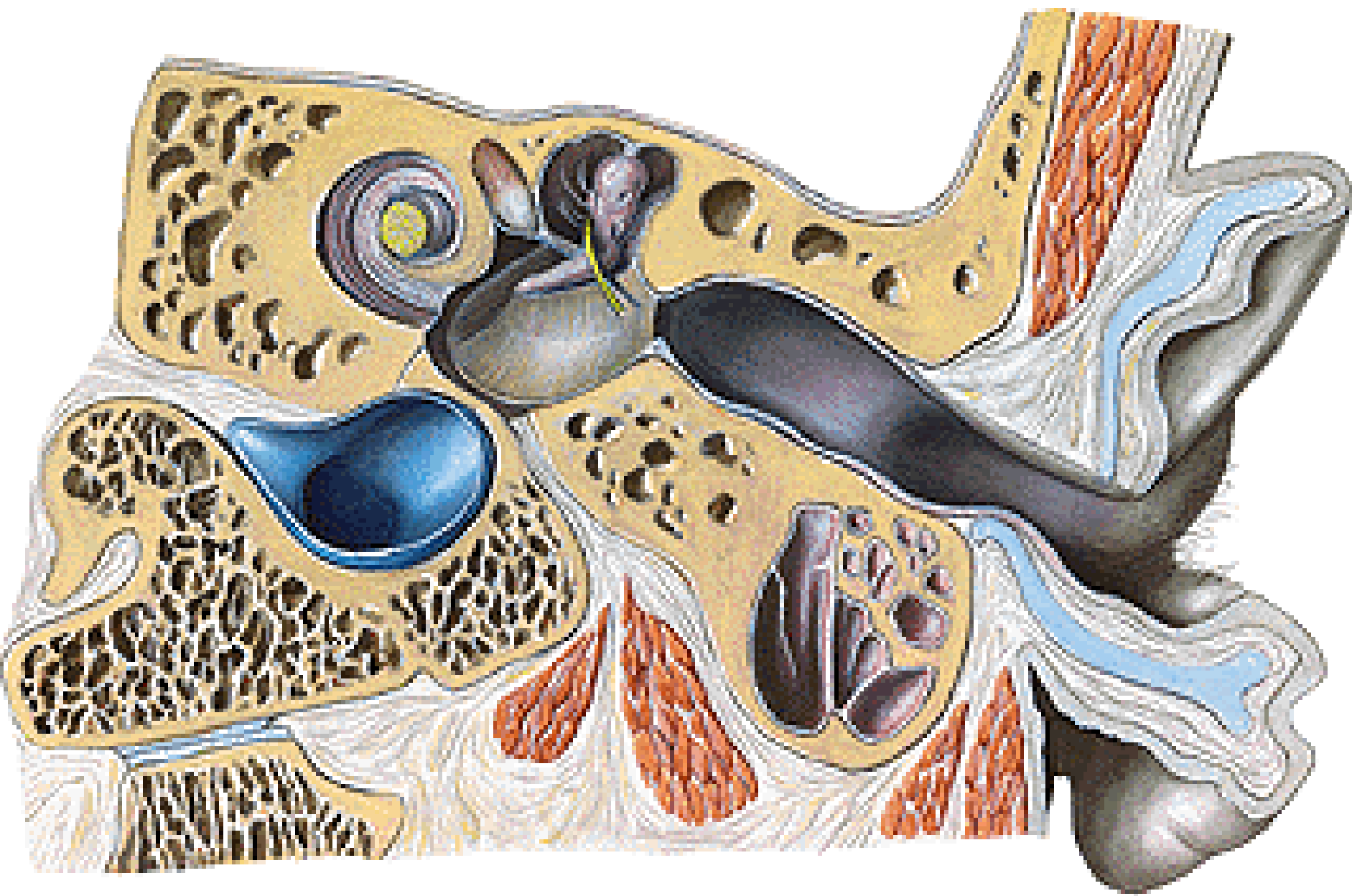


Tympanic Cavity

Viewed from External Acoustic Meatus



Tympanic Membrane Removed



MEMBRANA TYMPANI:

A. MAXILLARIS

A. OCCIPITALIS

A. AURICULARIS POST.

V. JUGULARIS EXT.

SINUS DURAE MATRIS

PLEXUS TUBAE AUDITIVAE

N. AURICULOTEMPORALIS

R. AURICULARIS N. VAGI

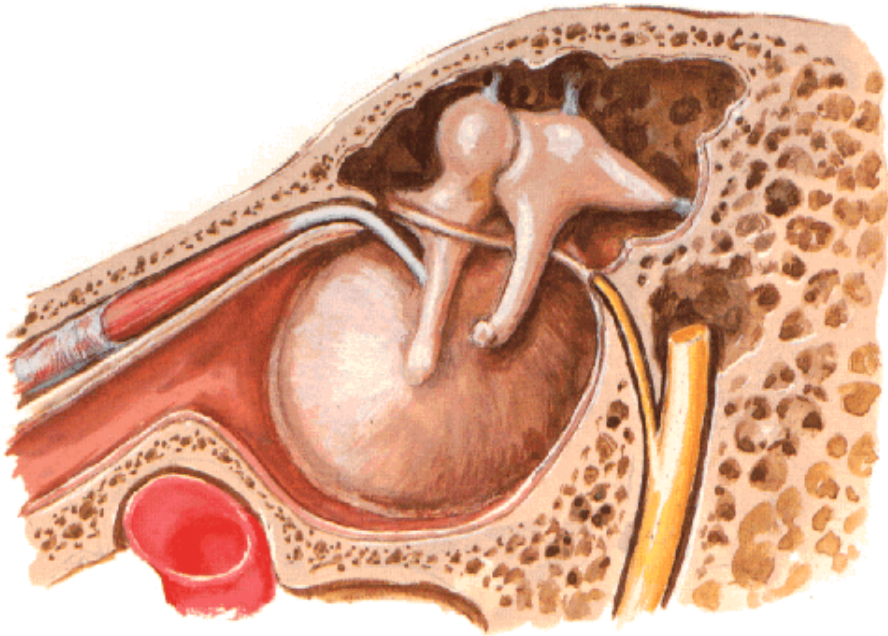
N. TYMPANICUS N. GLOSSOPHARYNGEI

N. FACIALIS

CAVUM TYMPANI

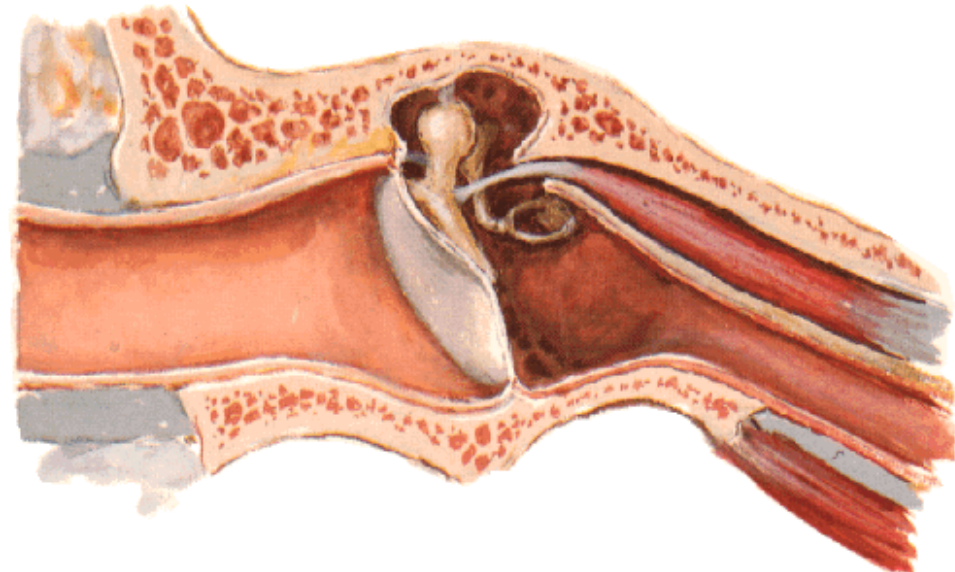
- cavum tympani proprium
- recessus epitympanicus

Tympanic Cavity - Lateral Wall
Medial View

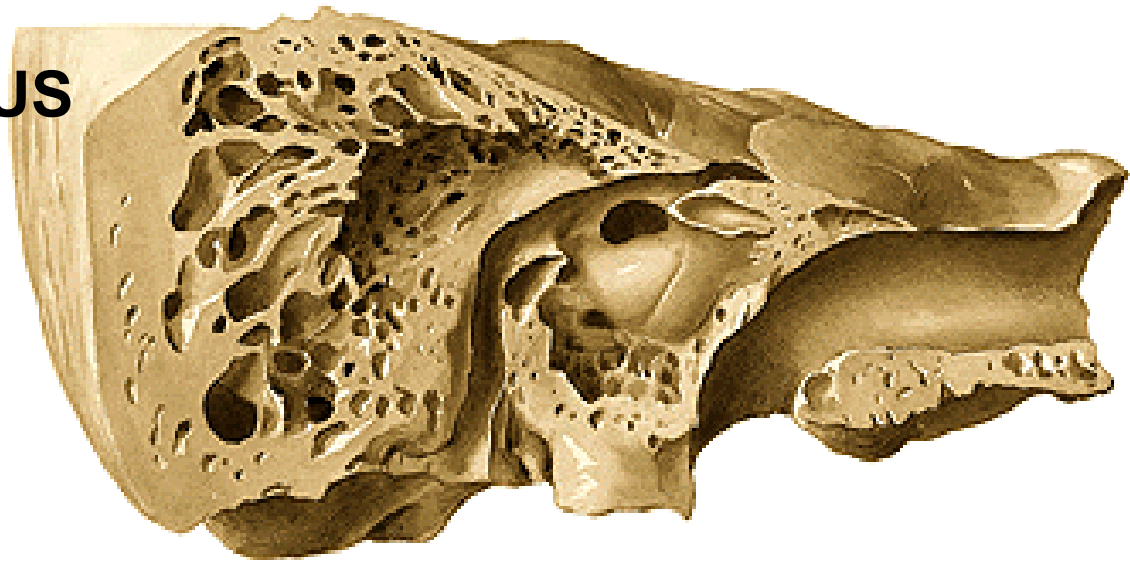


- Paries tegmentalis**
- Paries jugularis**
- Paries caroticus**
- Paries mastoideus**
- Paries labyrinthicus**
- Paries membranaceus**

External Ear and Tympanic Cavity
Coronal Oblique Section



PARIES LABYRINTHICUS



PROMONTORY

FENESTRA VESTIBULI

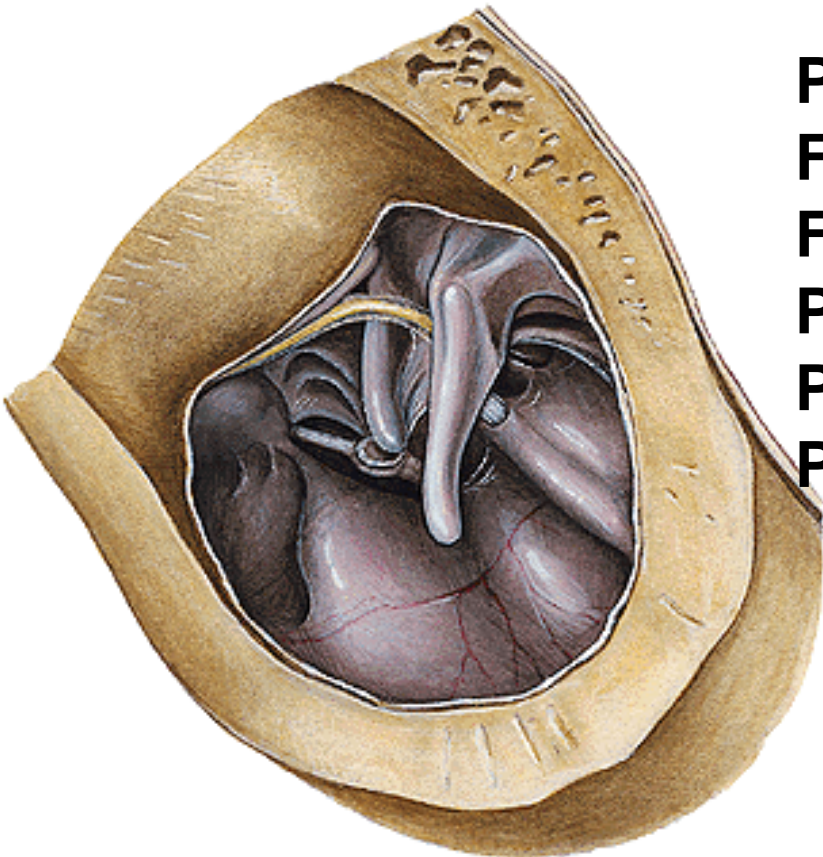
FENESTRA COCHLEAE

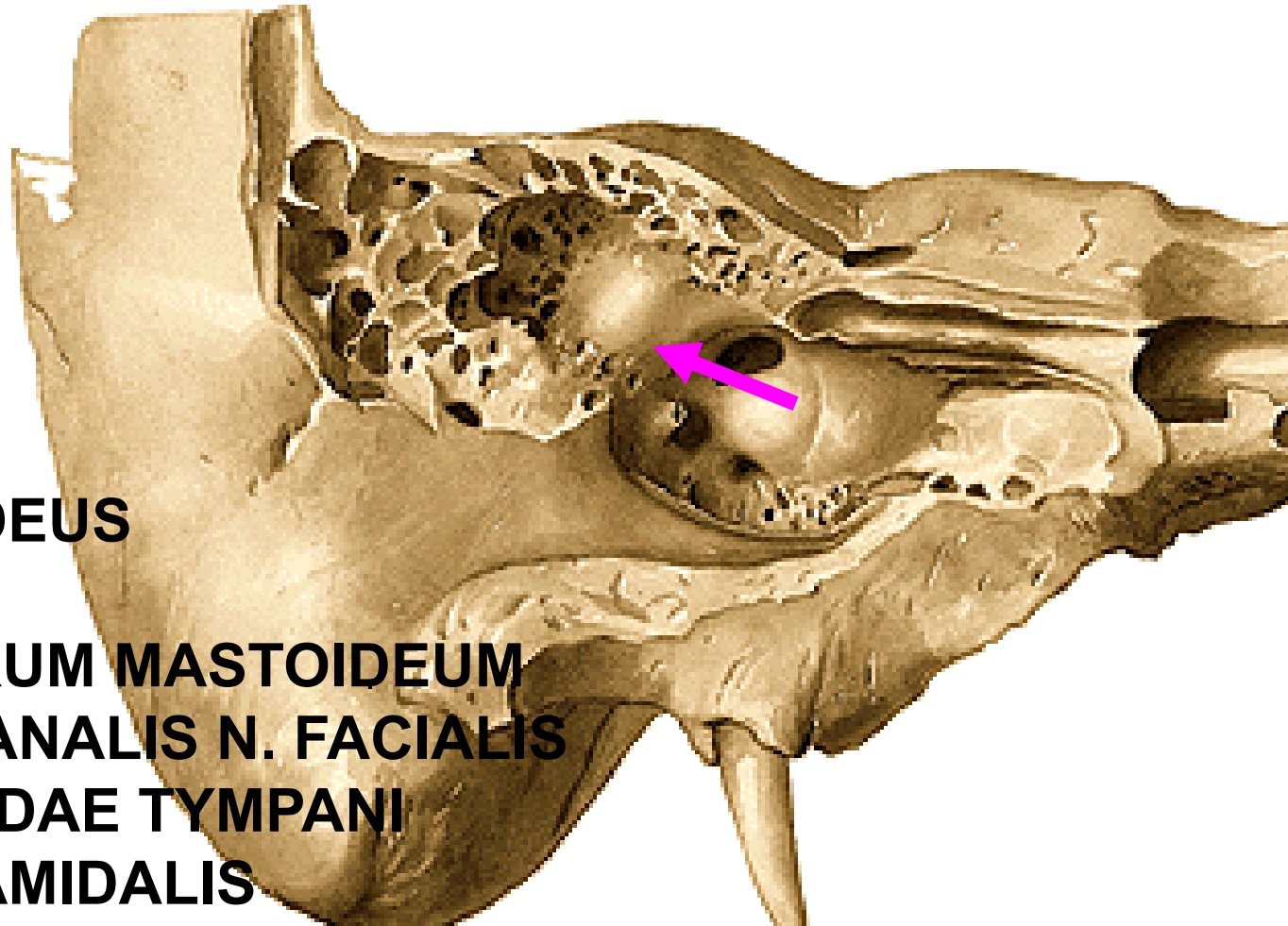
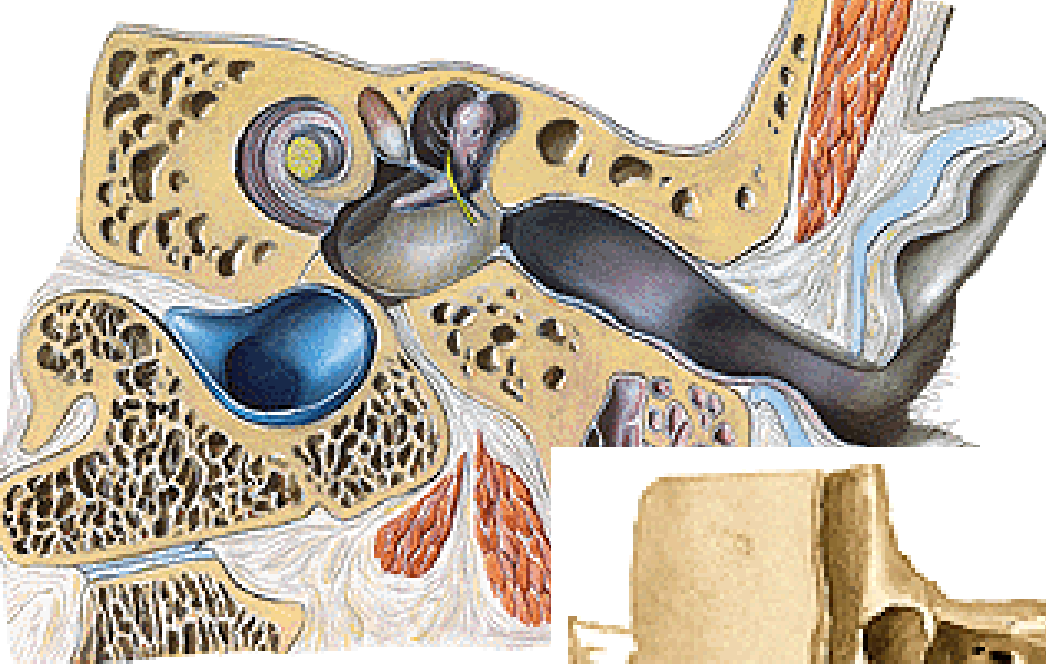
PROCESSUS COCHLEARIFORMIS

PROMINENTIA CANALIS FACIALIS

PROMINENTIA CANALIS

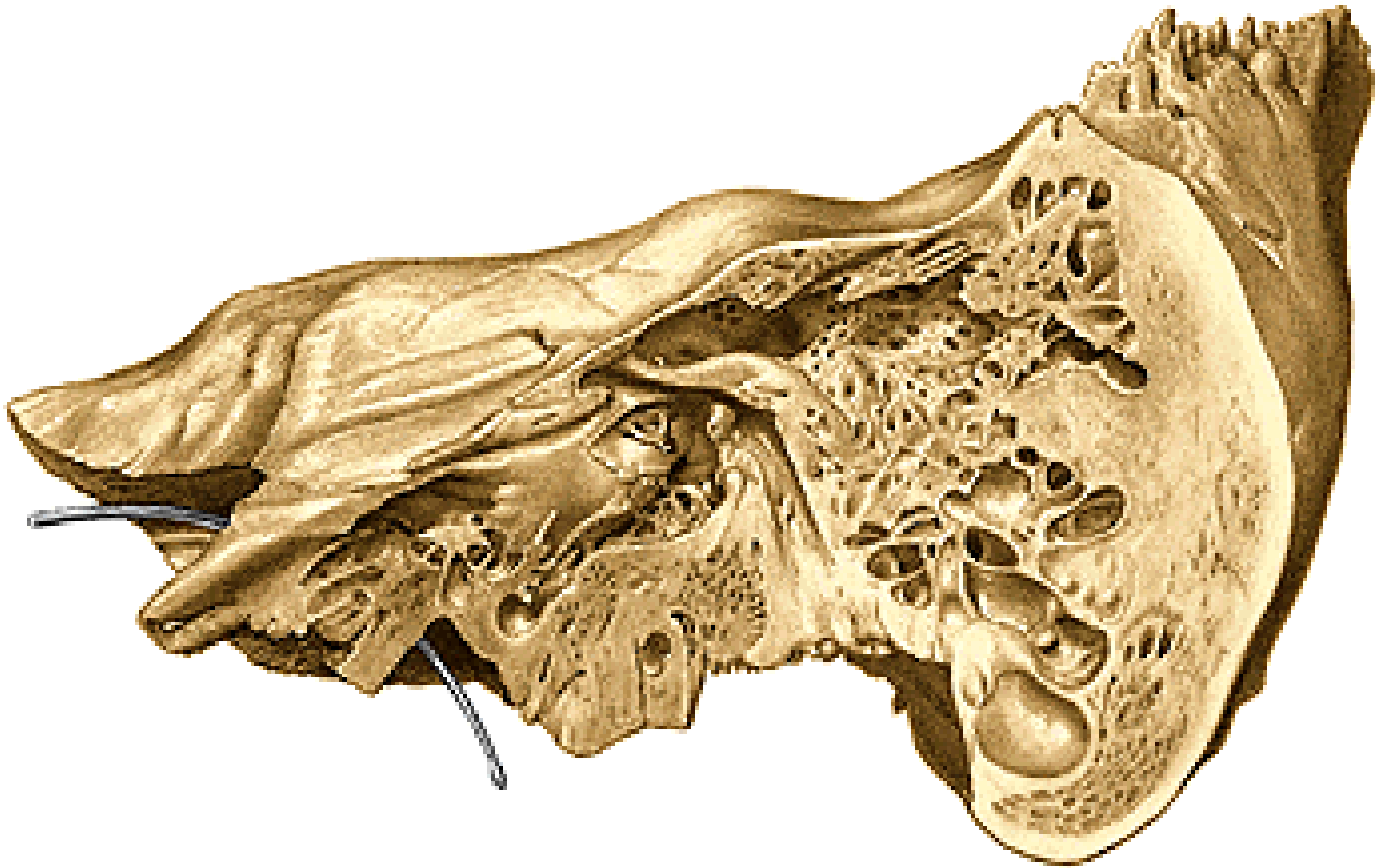
SEMICIRCULARS LATERALIS





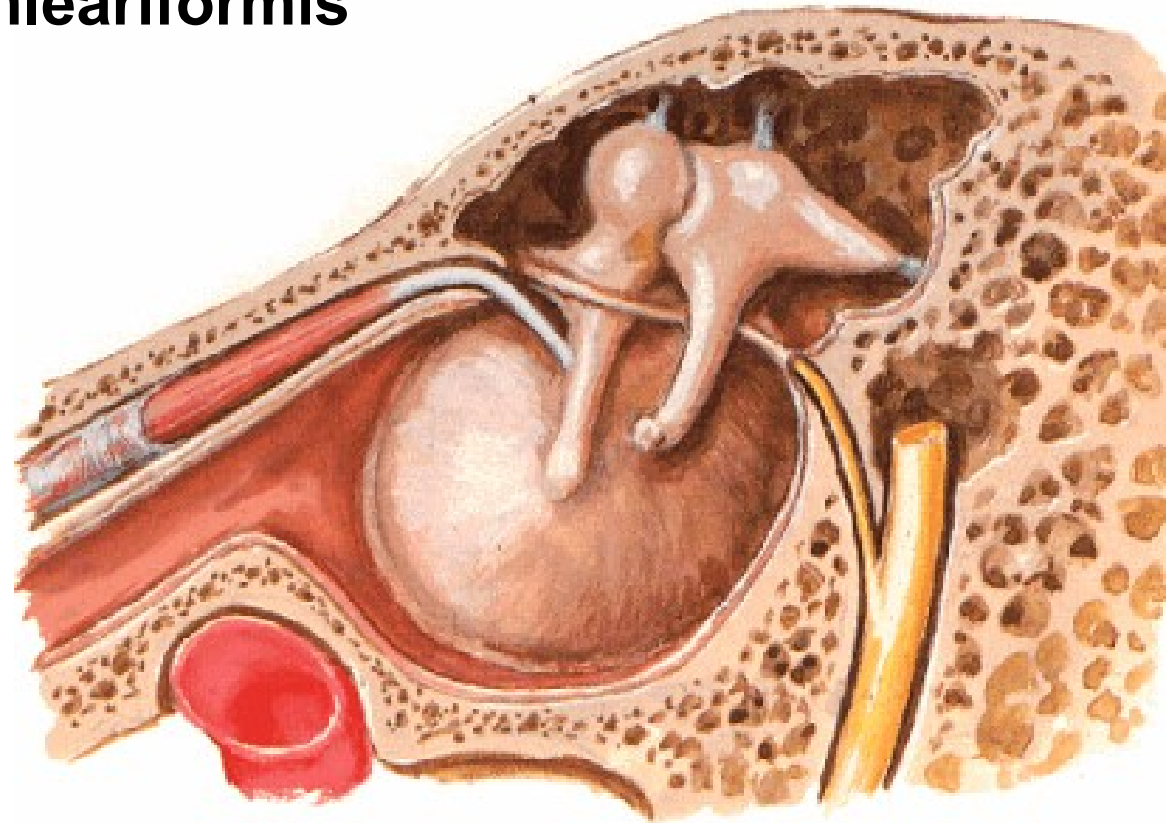
PARIES MASTOIDEUS

ADITUS AD ANTRUM MASTOIDEUM
PROMINENTIA CANALIS N. FACIALIS
FORAMEN CHORDAE TYMPANI
EMINENTIA PYRAMIDALIS



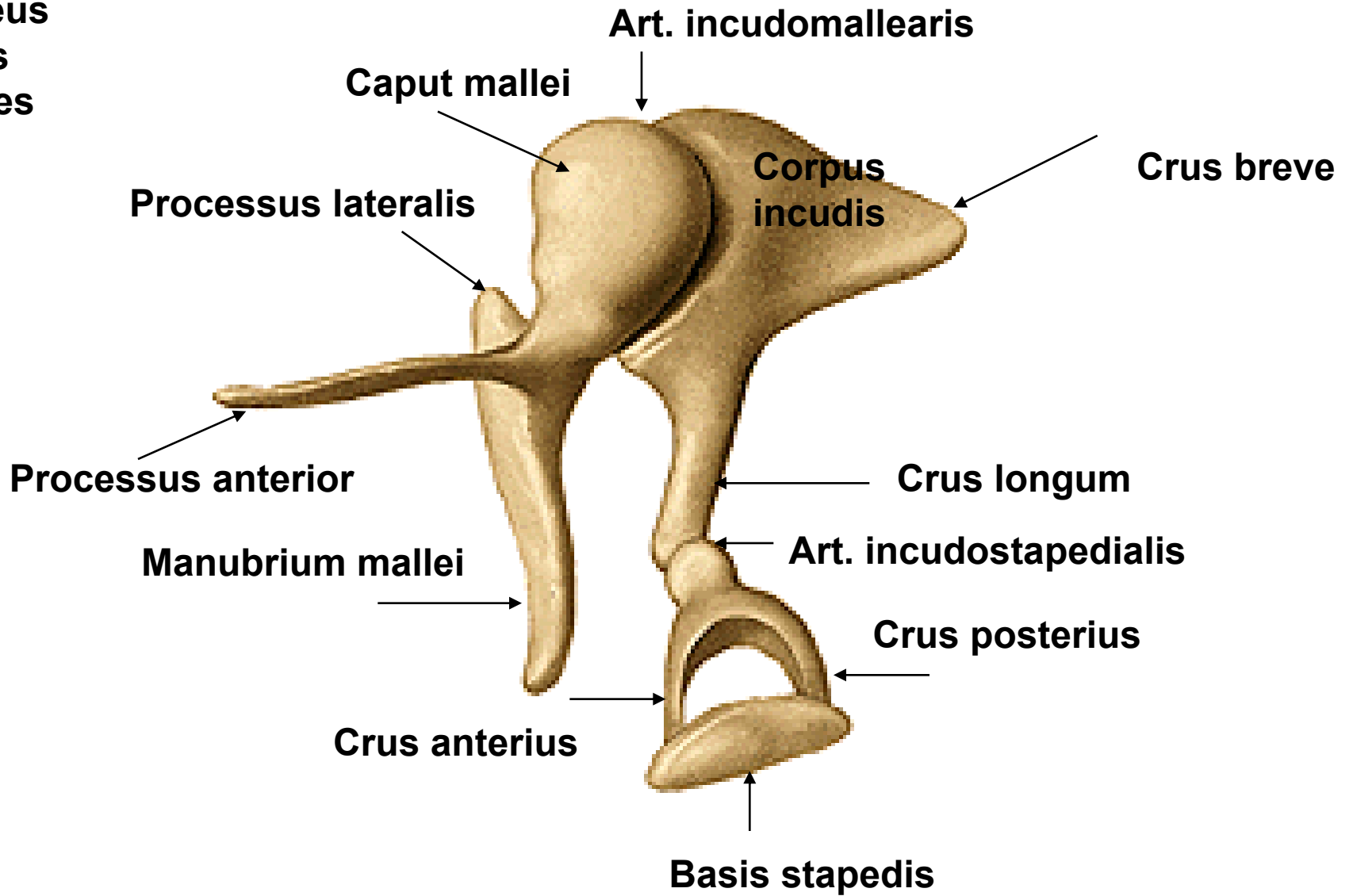
Paries caroticus:

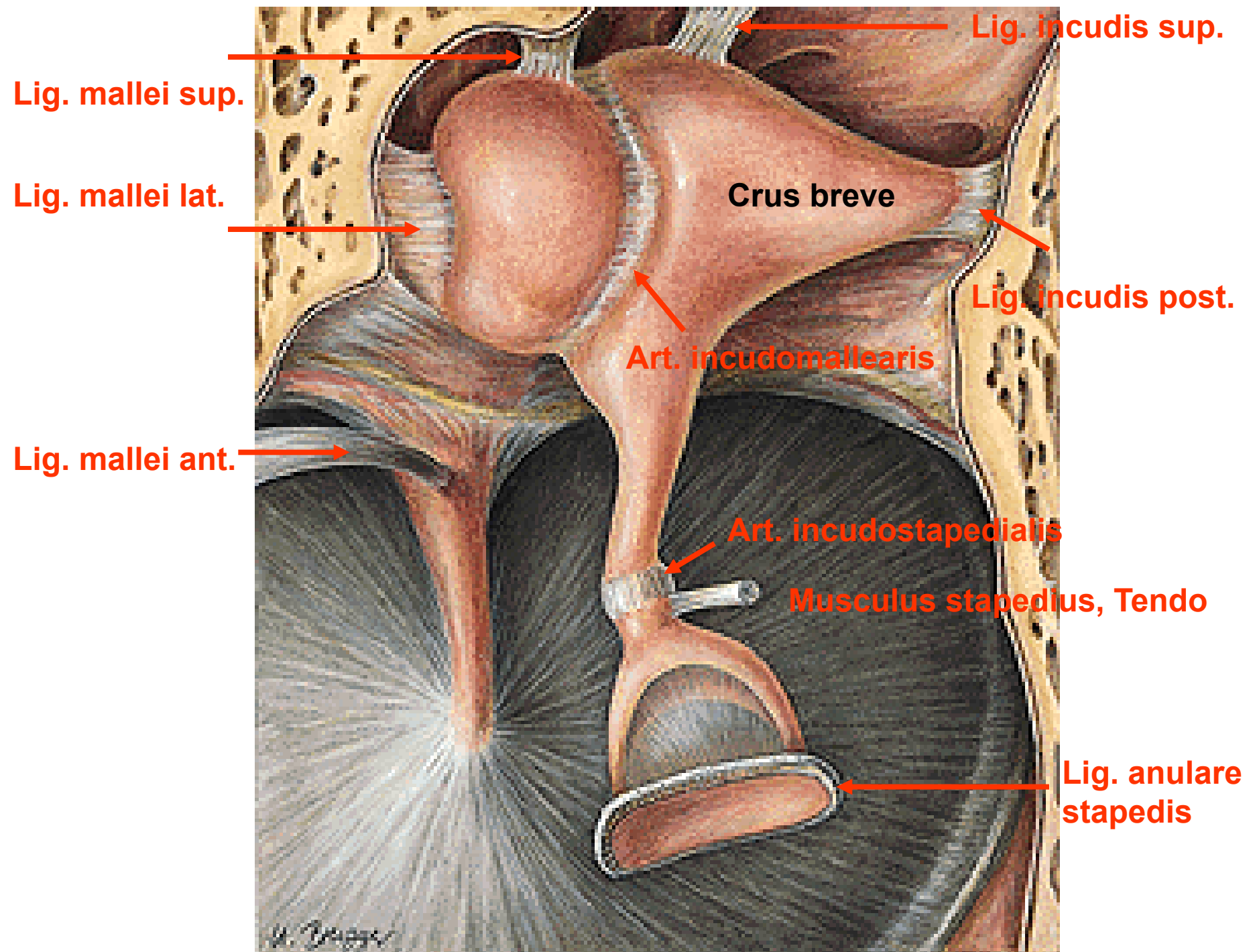
- **nn. caroticotympanici**
- **canalis musculotubarius – semicanalis m. tensoris tymp.**
 - **semicanalis tubae auditivae**
- **processus cochleariformis**

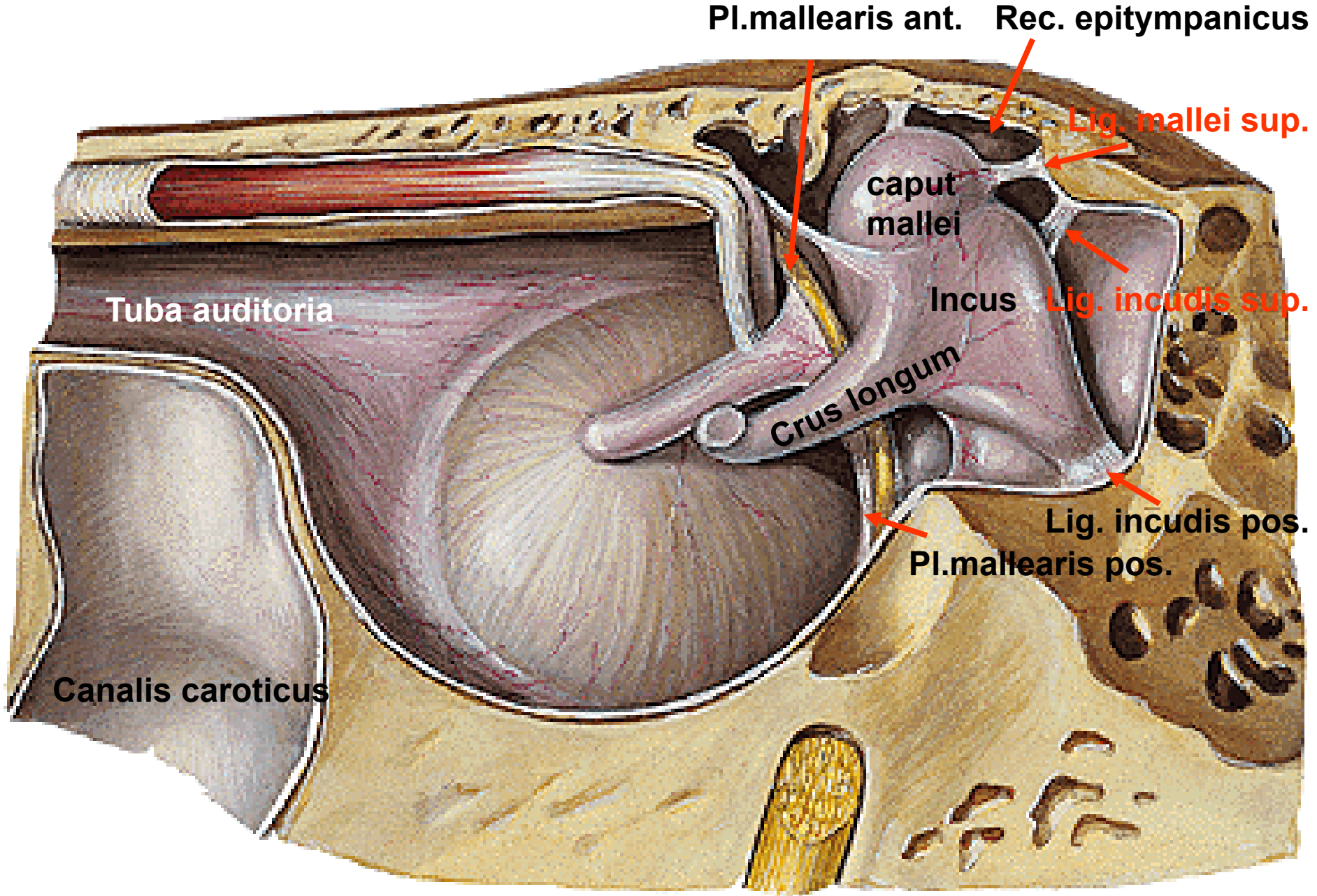


OSSICULA AUDITUS:

Malleus
Incus
Stapes







Pl.mallearis ant. Rec. epitympanicus

Lig. mallei sup.

caput mallei

Incus

Lig. incudis sup.

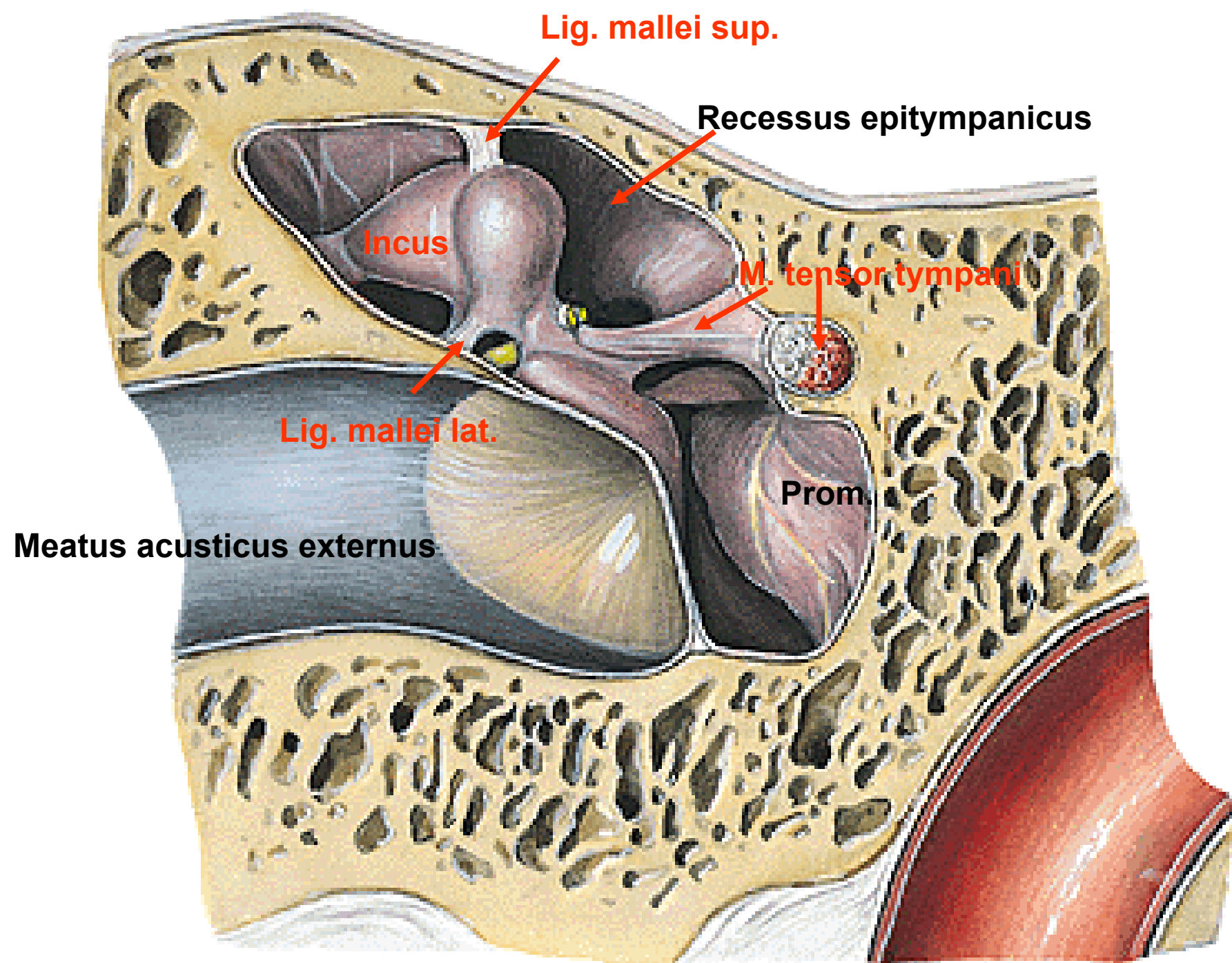
Crus longum

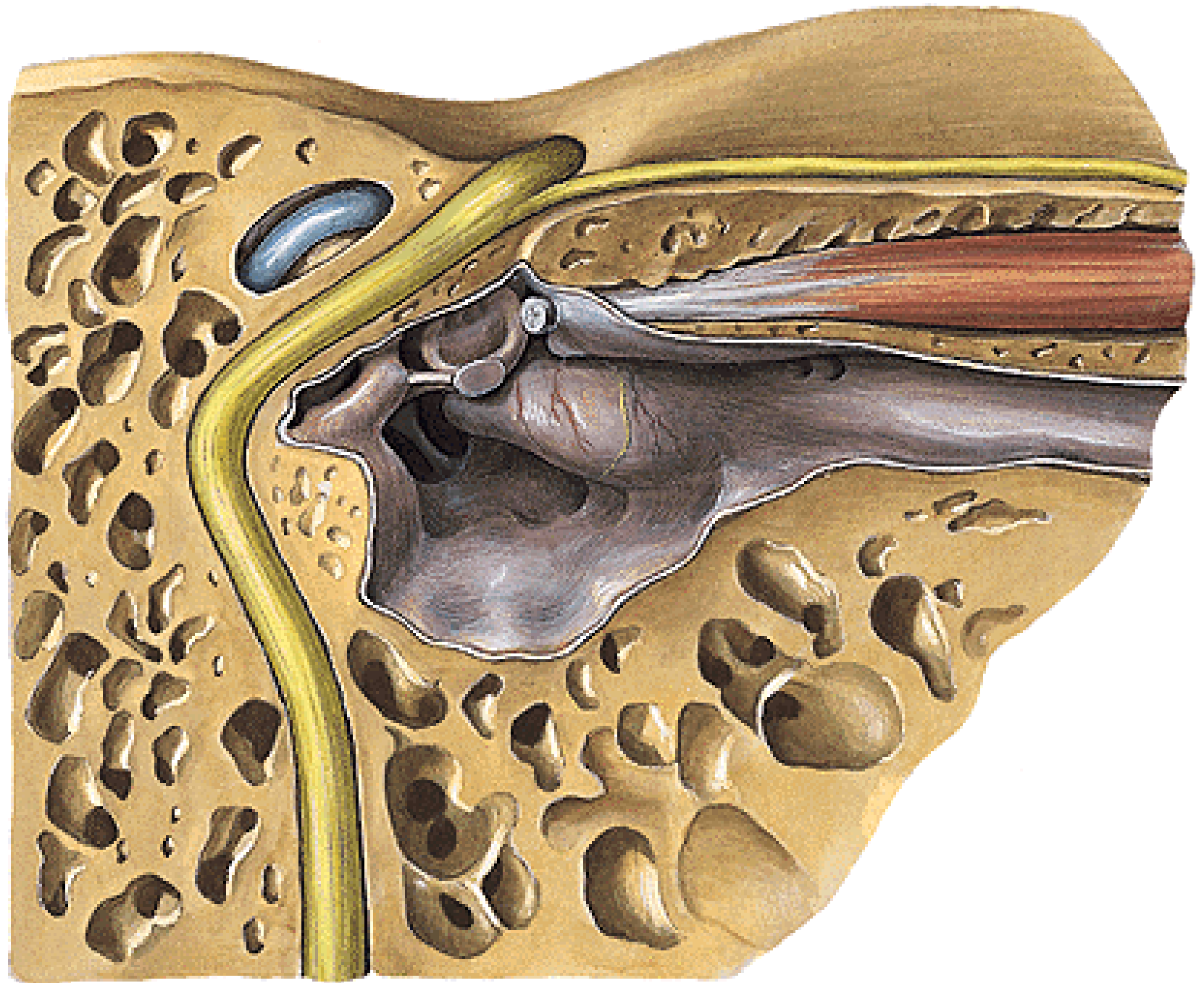
Lig. incudis pos.

Pl.mallearis pos.

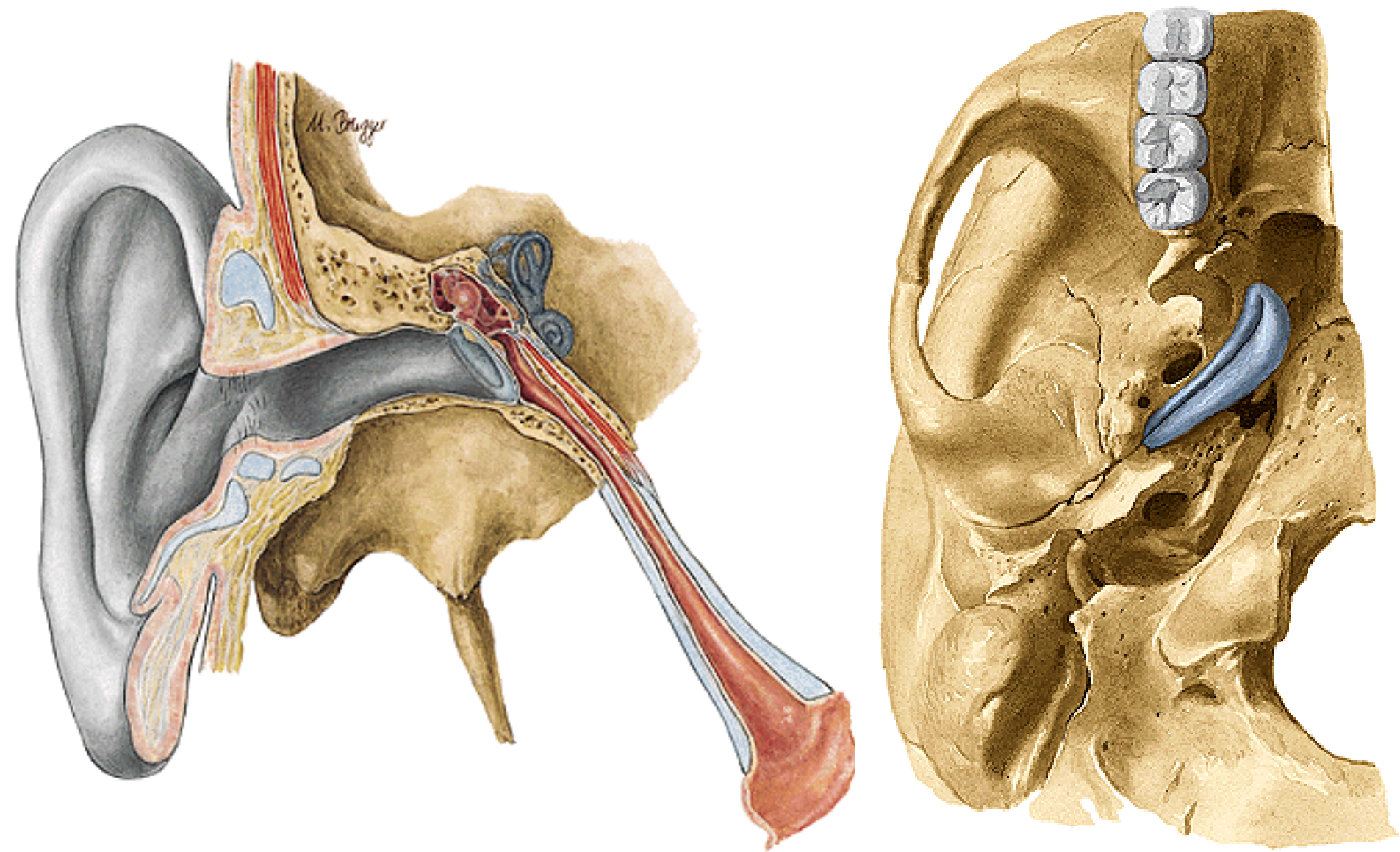
Tuba auditoria

Canalis caroticus





TUBA AUDITIVA (PHARYNGOTYMPANICA)



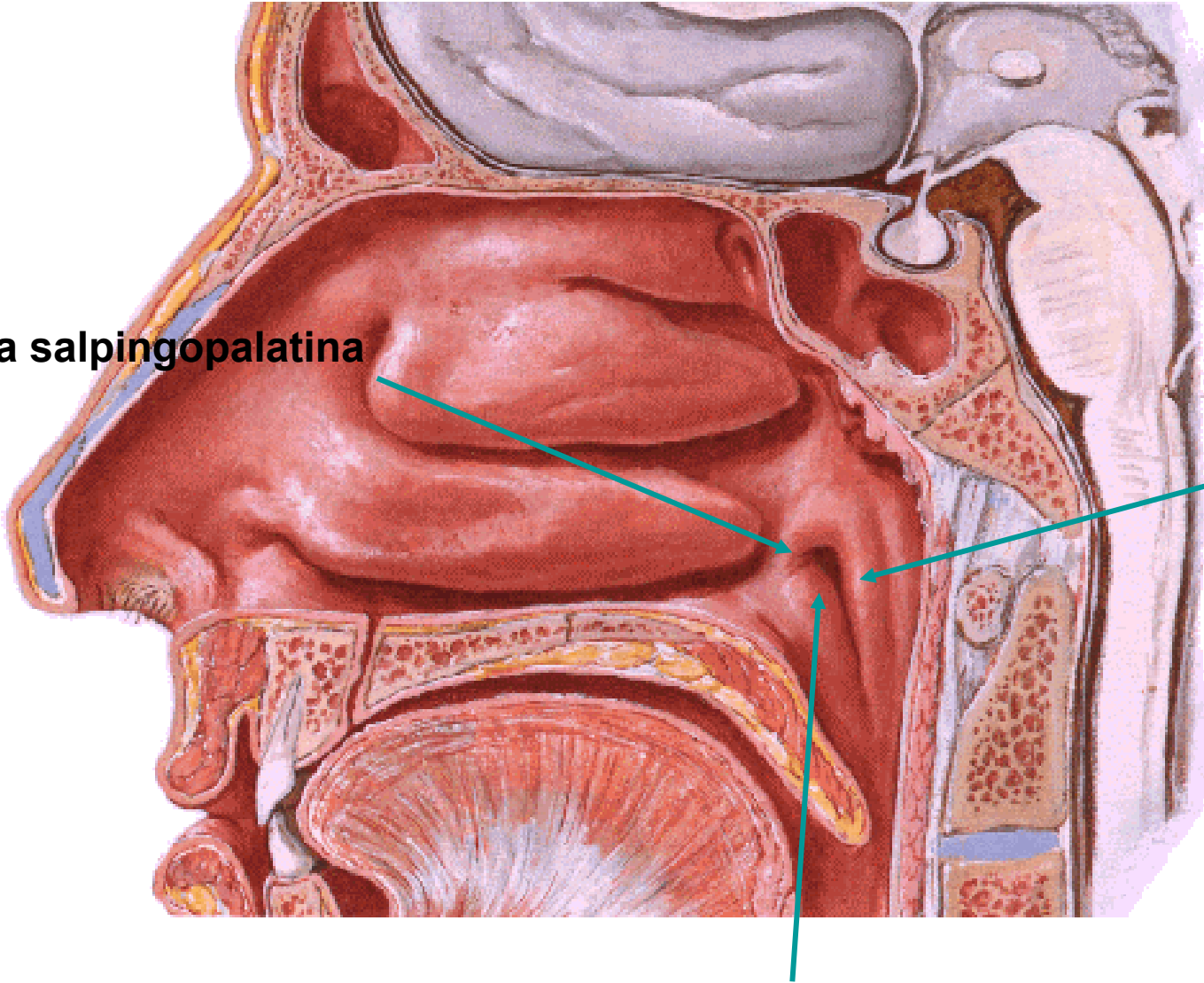
OSTIUM PHARYNGEUM TUBAE AUDITIVAE

Plica salpingopalatina

Torus tubarius

Tonsilla tubaria

Torus levatorius



CAVUM TYMPANI:

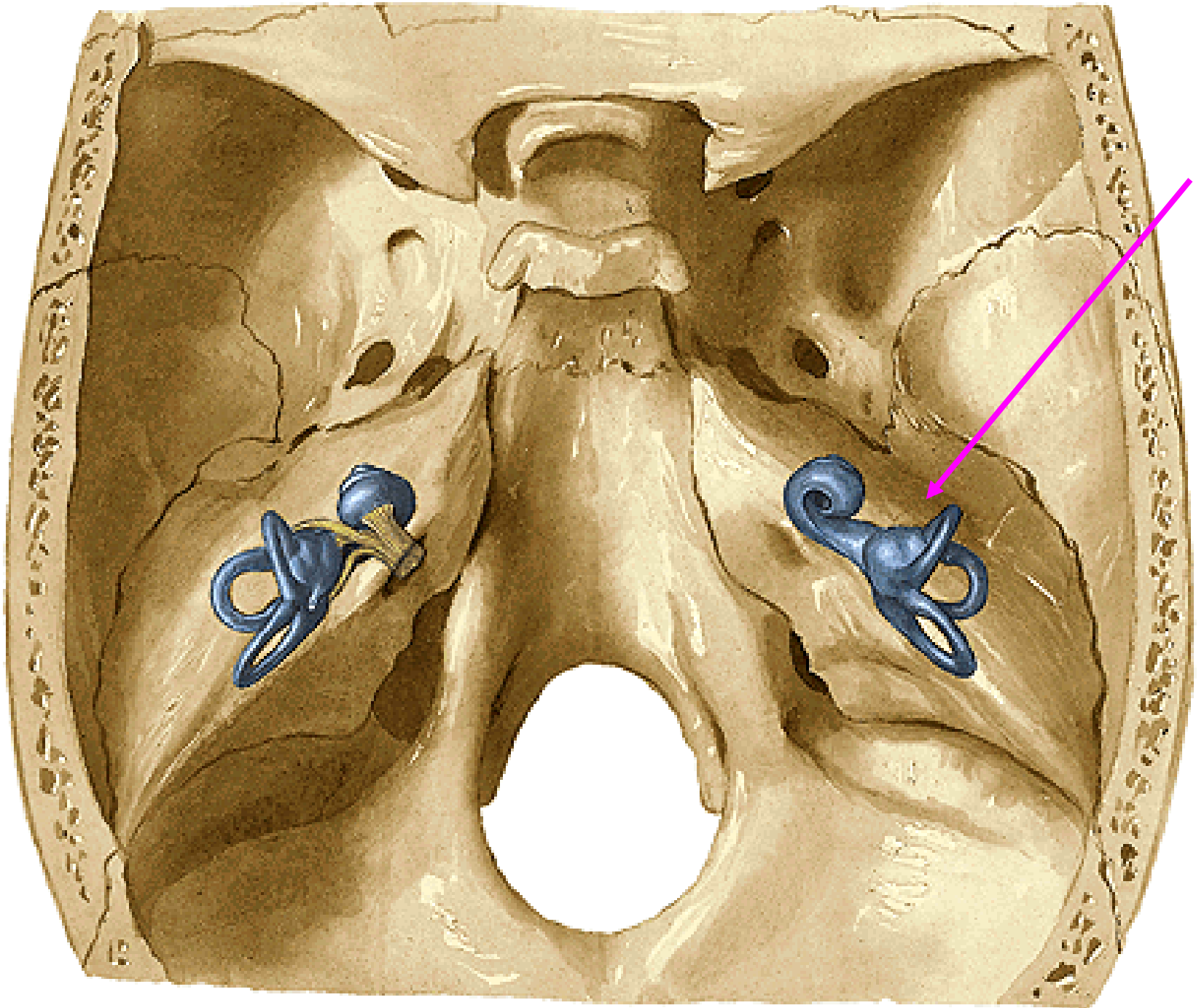
A. TYMPANICA ANT.

A. STYLOMASTOIDEA

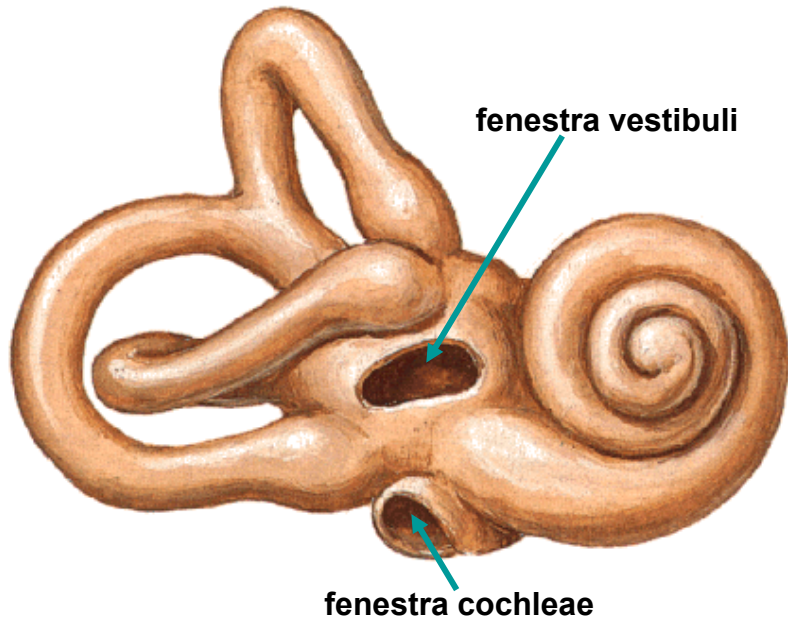
A. AURICULARIS POST.

PLEXUS PTERYGOIDEUS

**PLEXUS TYMPANICUS (CN VII, IX and cervical sympathetic
CHORDA TYMPANI**

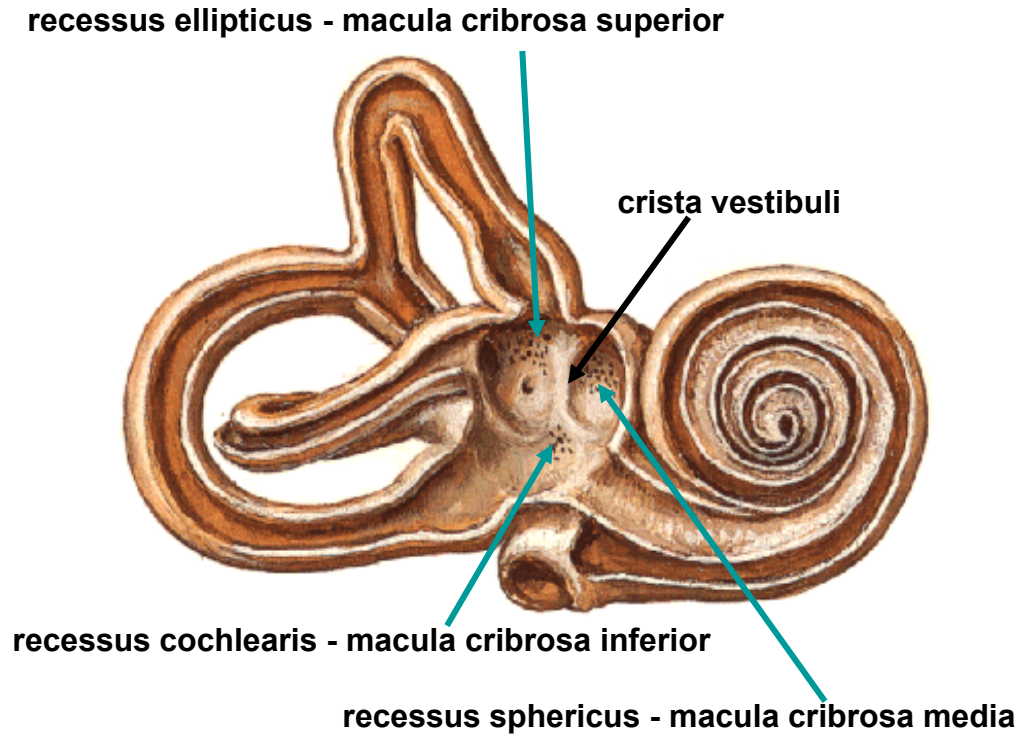


Right Osseous Labyrinth
Anterolateral View



cochlea, vestibulum et canales semicirculares ossei

Right Osseous Labyrinth - Dissected
Membranous Labyrinth Removed



COCHLEA

Modiolus

Canalis spiralis cochleae

Cupula

Lamina spiralis ossea

Scala vestibuli

Scala tympani

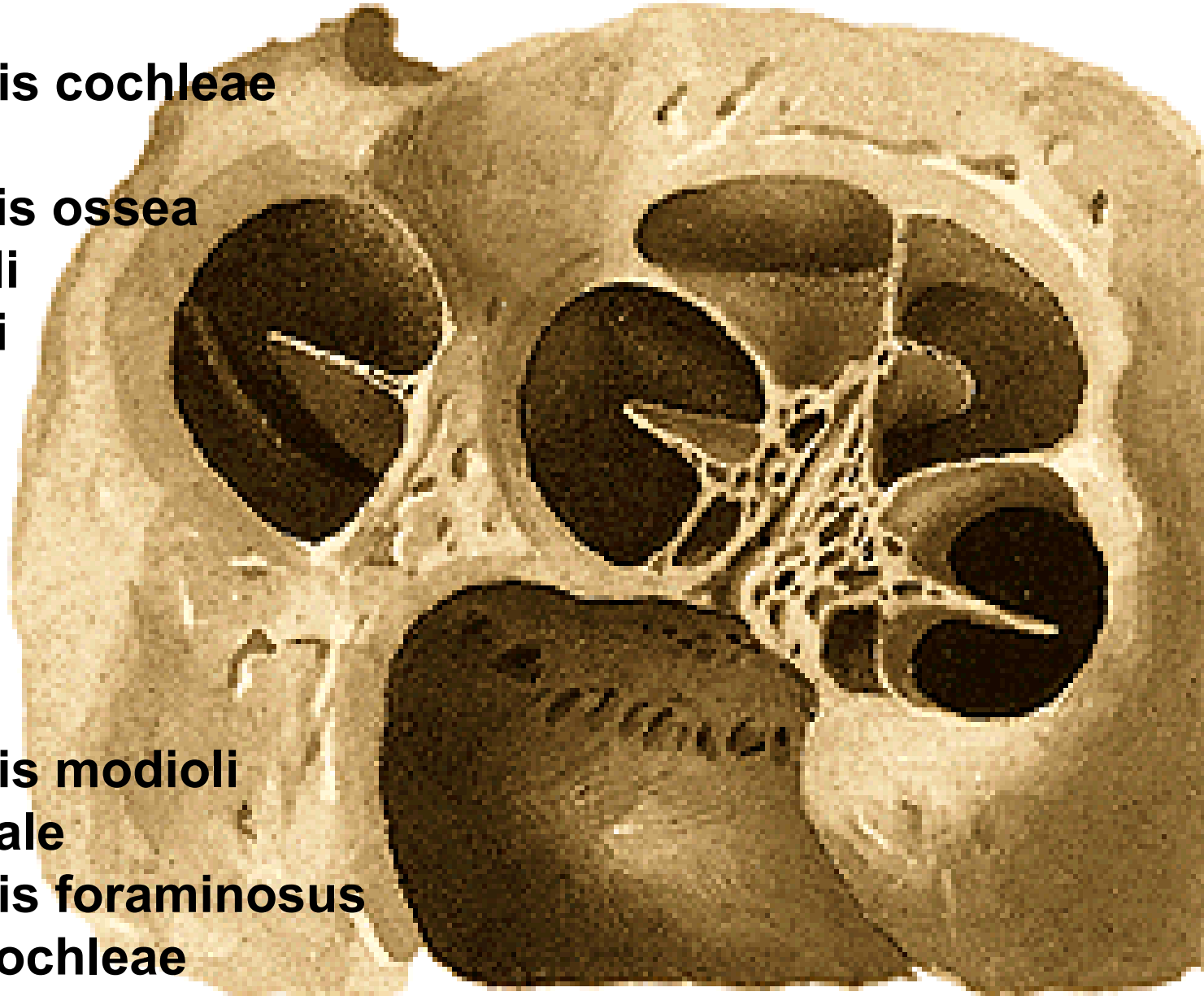
Helicotrema

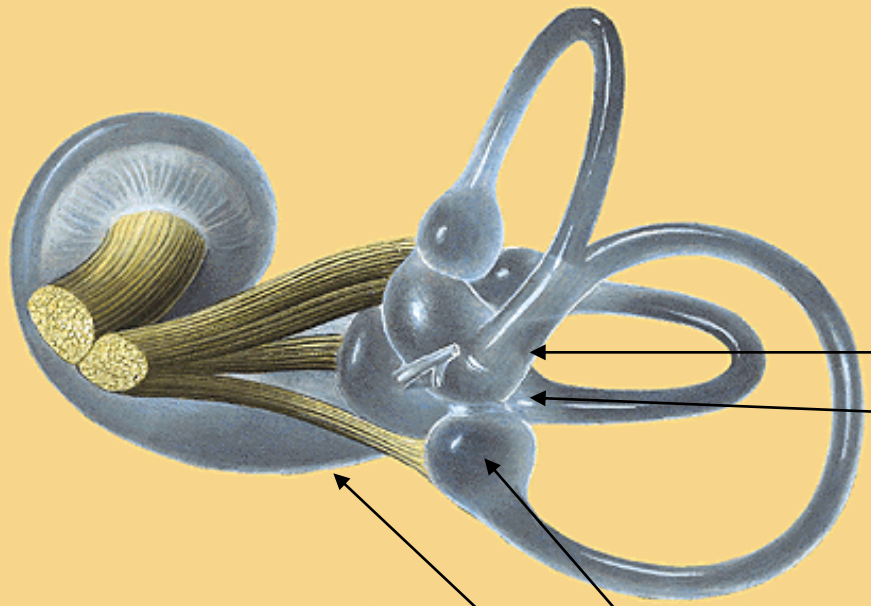
Canalis spiralis modioli

Ganglion spirale

Tractus spiralis foraminosus

Canaliculus cochleae





Crista ampullaris ant.
Crista ampullaris lat.
Crista ampullaris post.

Crus membranaceum commune
 Crus simplex d.s.lat.

Saccus endolymphaticus

Macula utriculi
Macula sacculi

Crus ampullare d.s.post.

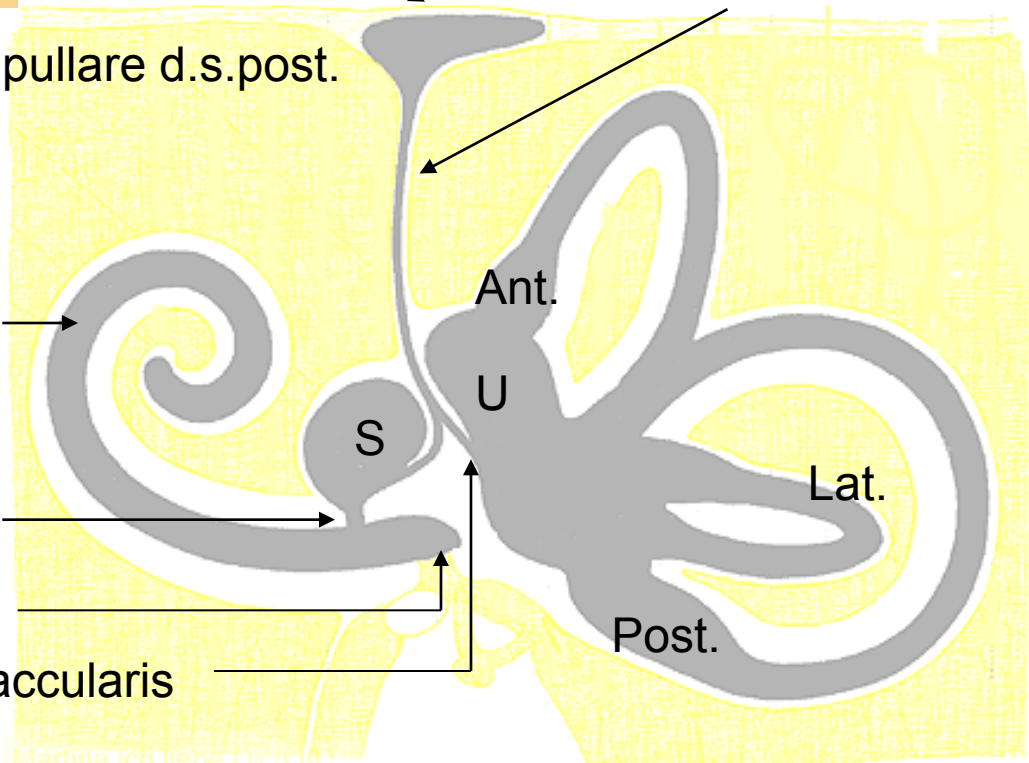
Ductus endolymphaticus

Ductus cochlearis

Ductus reuniens

Caecum vestibulare

Ductus utriculosaccularis



Caecum cupulare
Caecum vestibulare

Scala vestibuli
(perilymph)

Ductus
cochlearis
(endolymph)

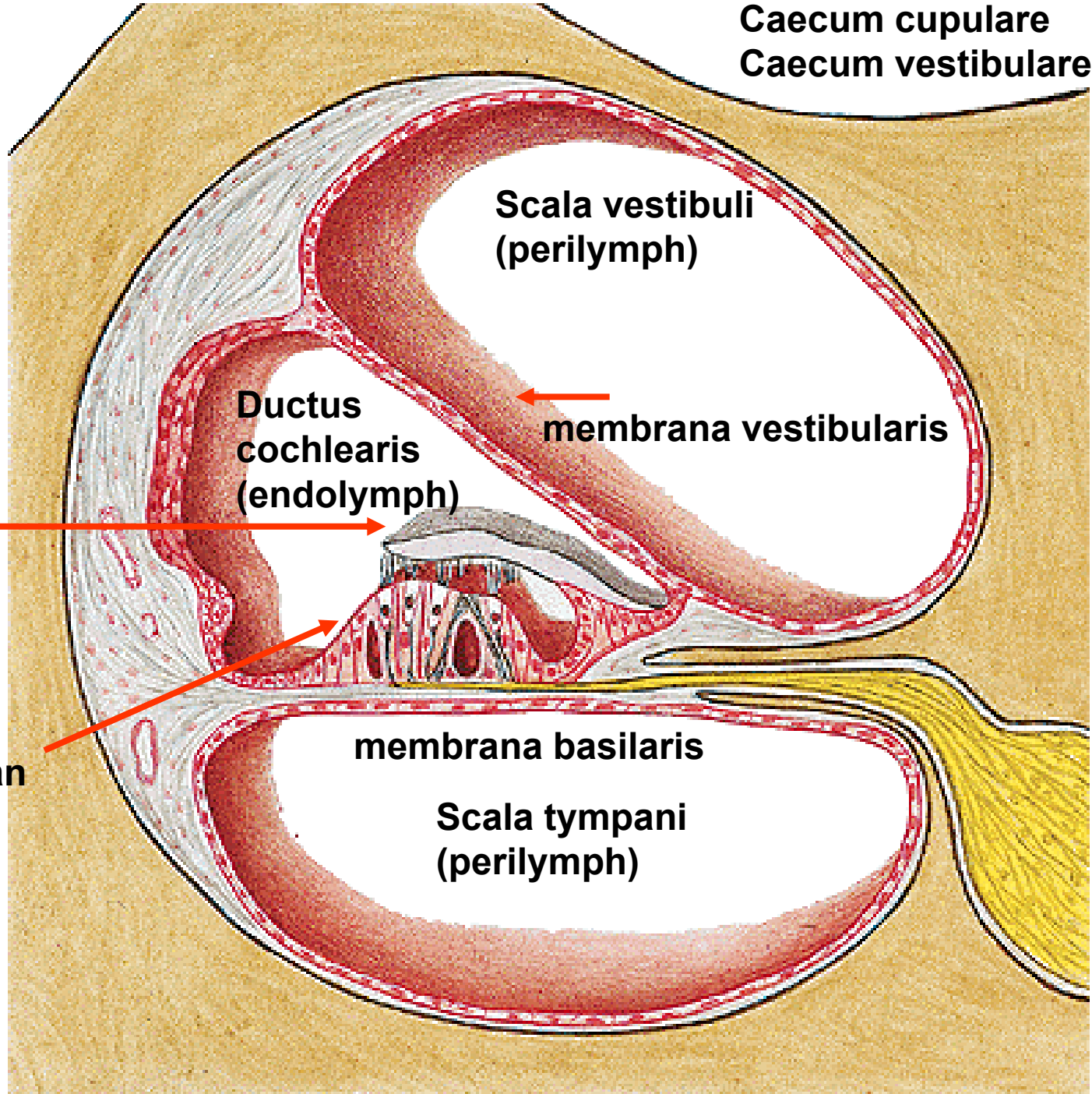
membrana vestibularis

Membrana
tectoria

membrana basilaris

Scala tympani
(perilymph)

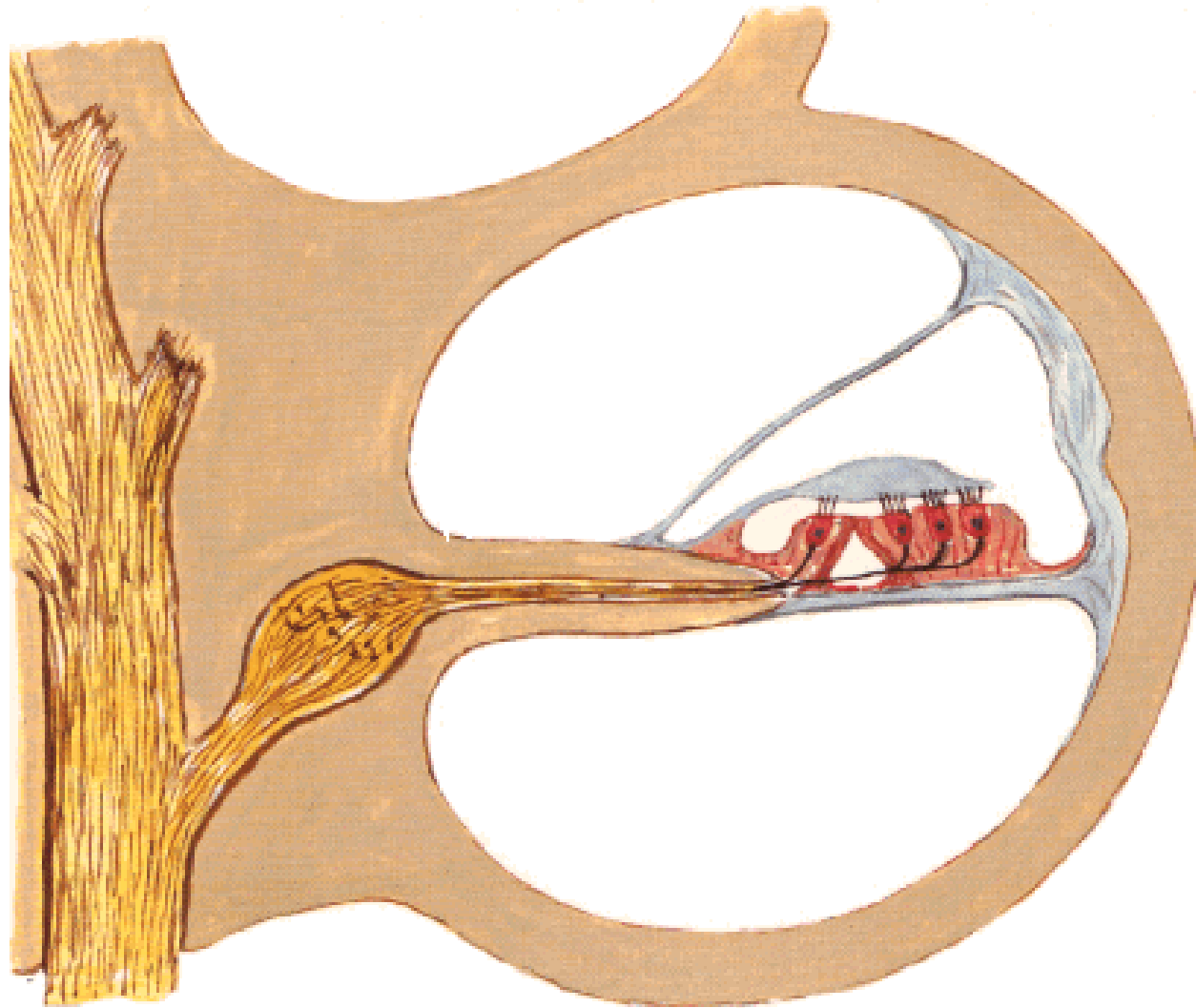
Spiral organ
of Corti



Osseous and Membranous Labyrinths

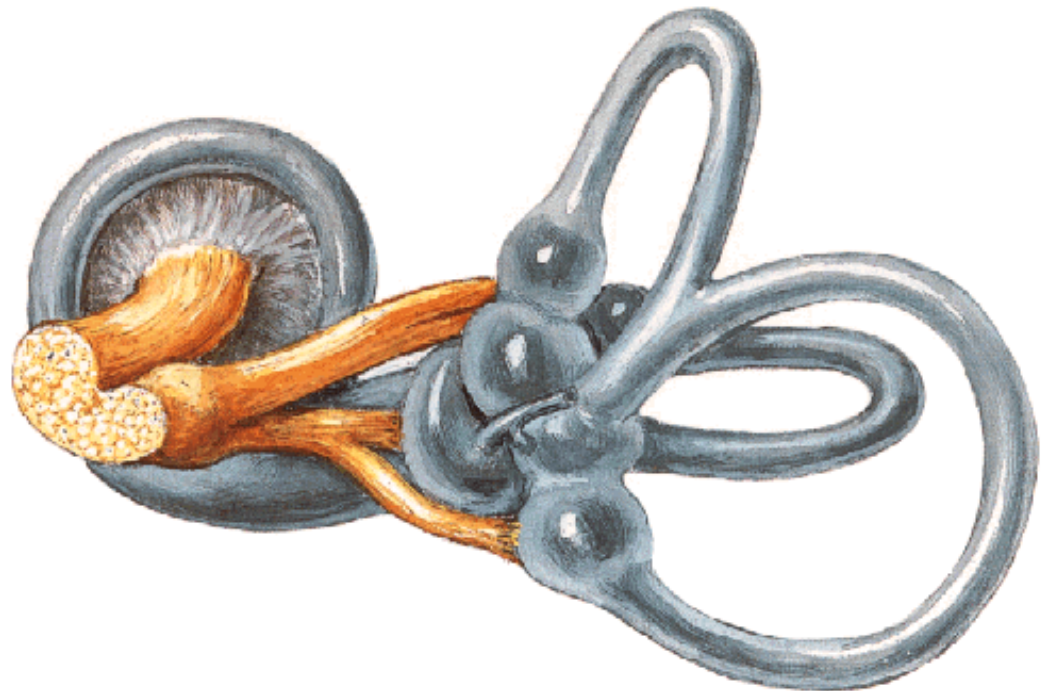
Section Through Turn of Cochlea

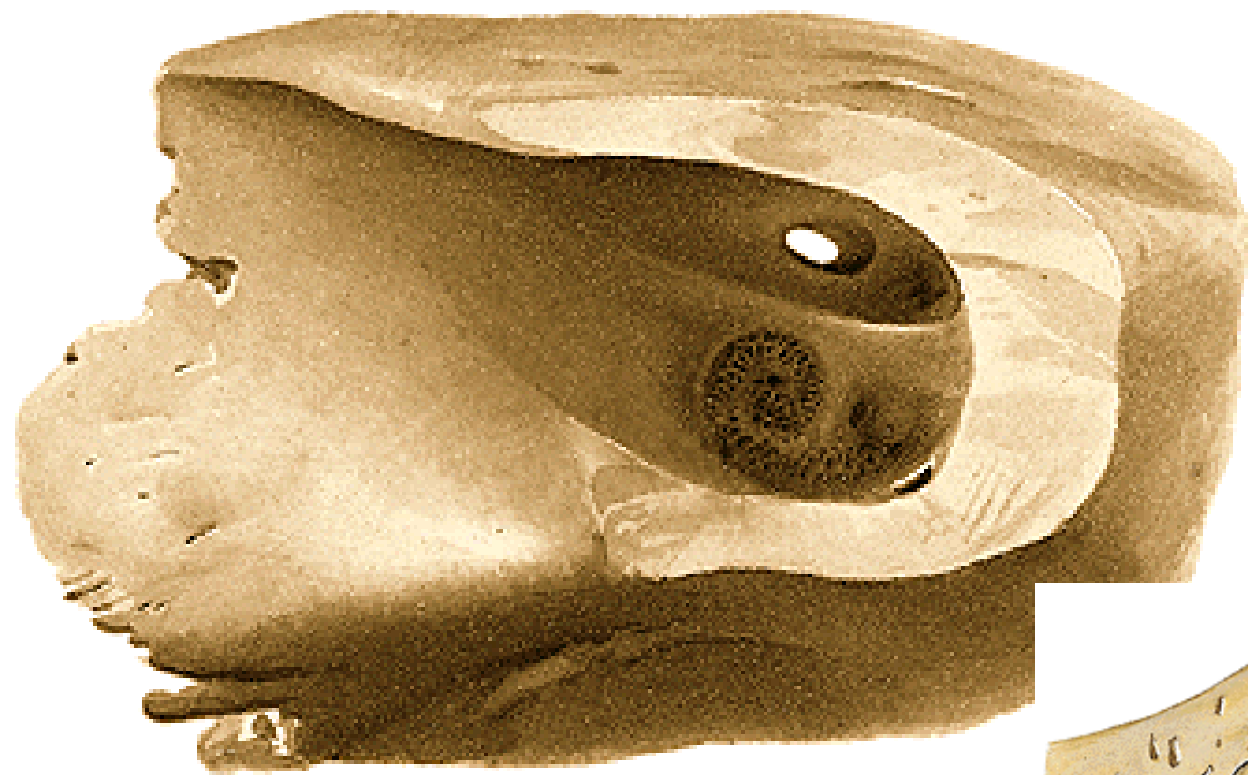
20-20000Hz



N. VESTIBULOCOCHLEARIS

- **PARS COCHLEARIS**
- **PARS VESTIBULARIS**
 - **N. utriculoampullaris**
 - **n. utricularis**
 - **n. ampullaris ant.**
 - **n. ampullaris lat.**
 - **N. saccularis**
 - **N. ampullaris post.**





FUNDUS MEATUS ACUSTICI INTERNI

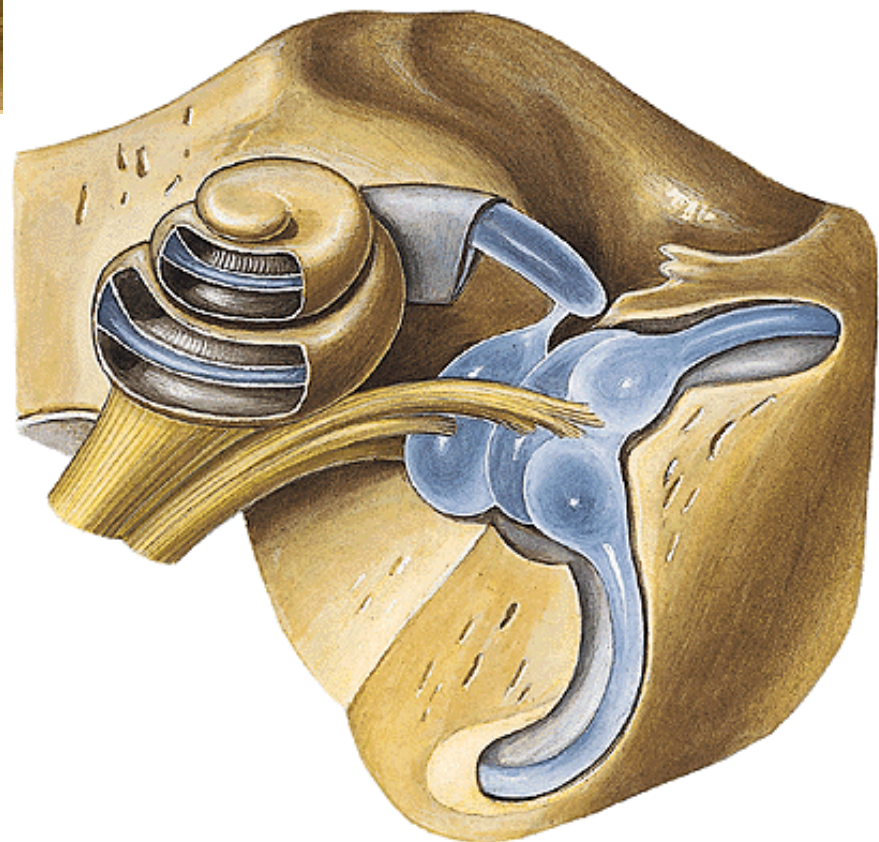
Introitus can. n. VII

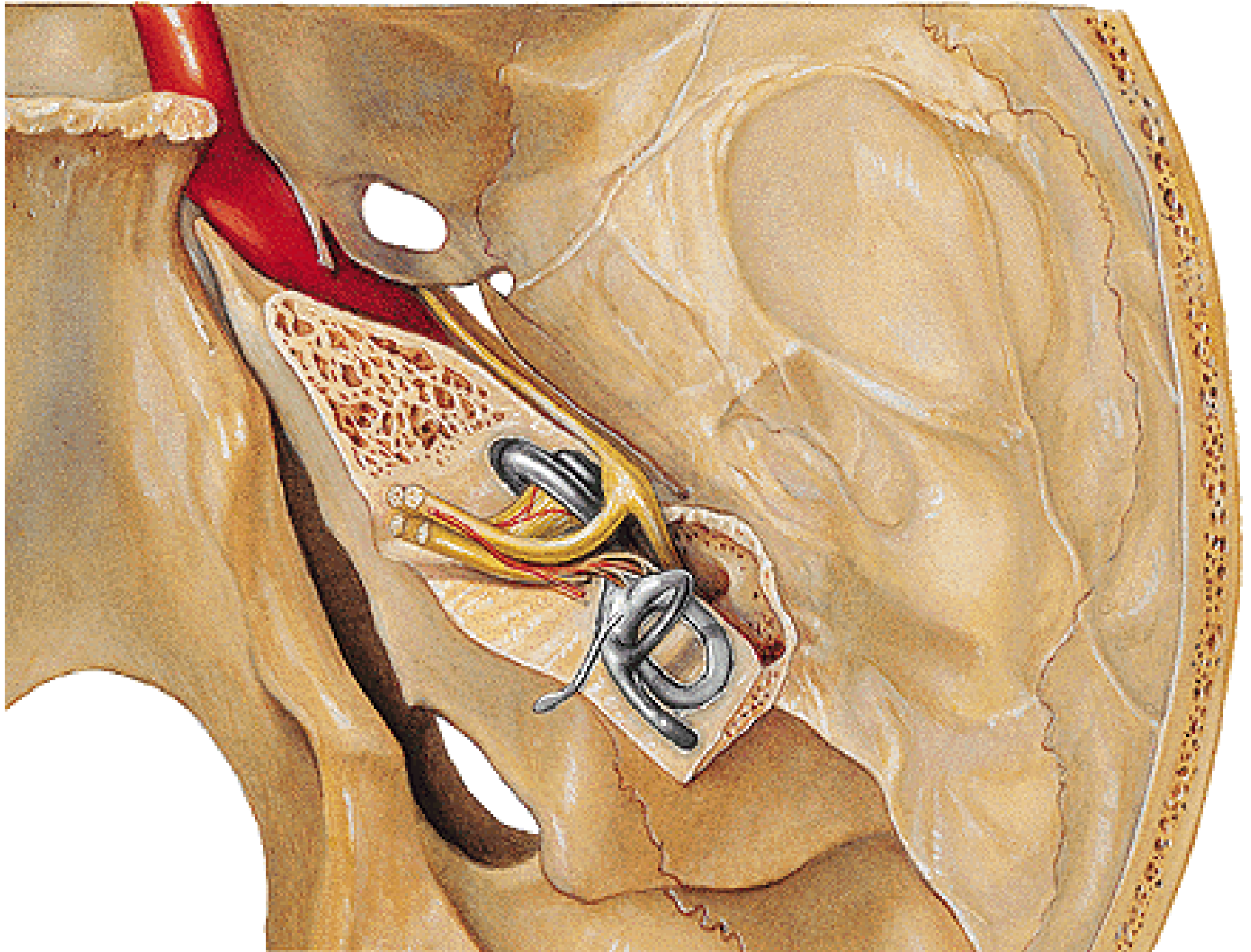
Area cochlea

Area vestibularis sup.

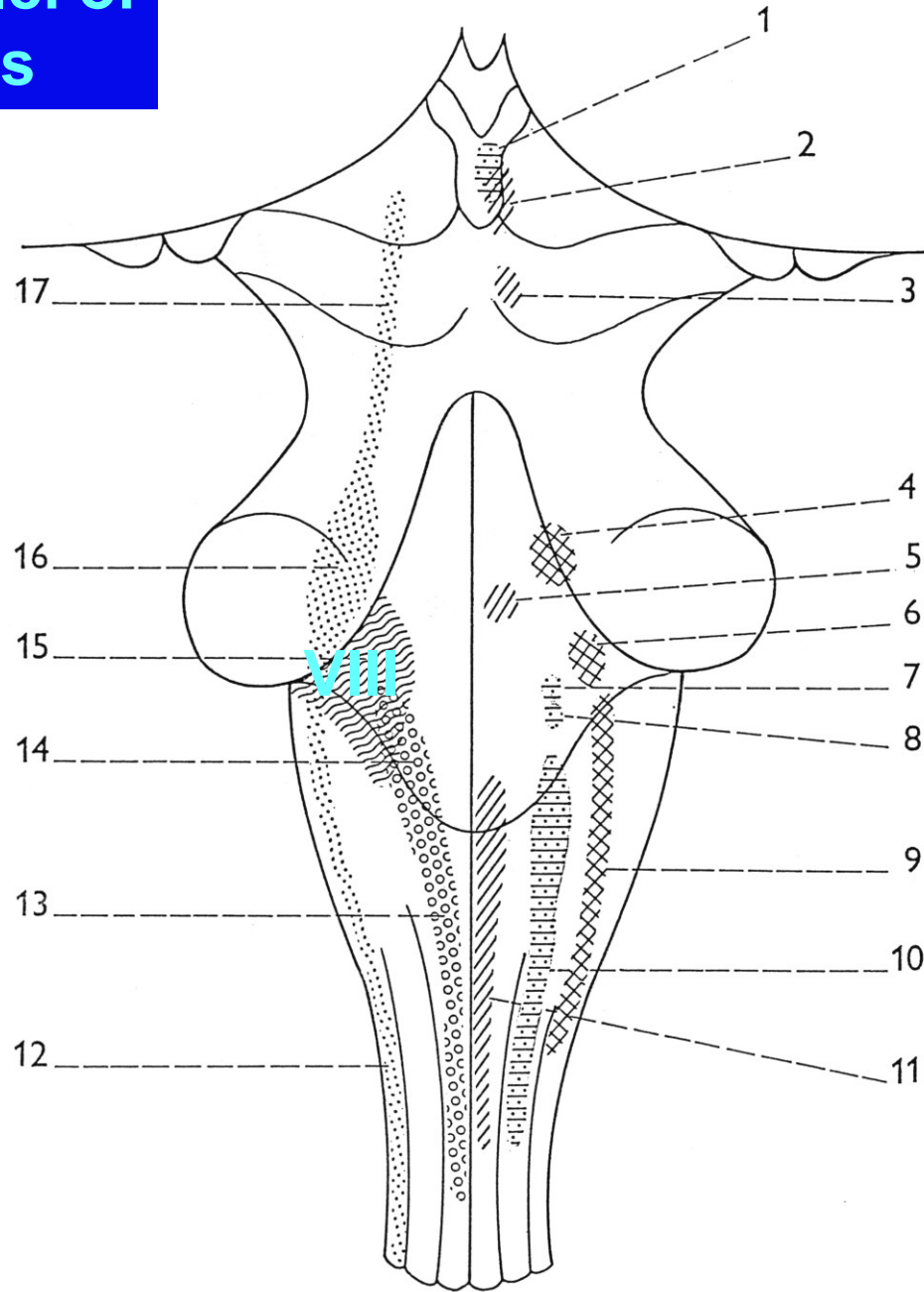
Area vestibularis inf.

Foramen singulare

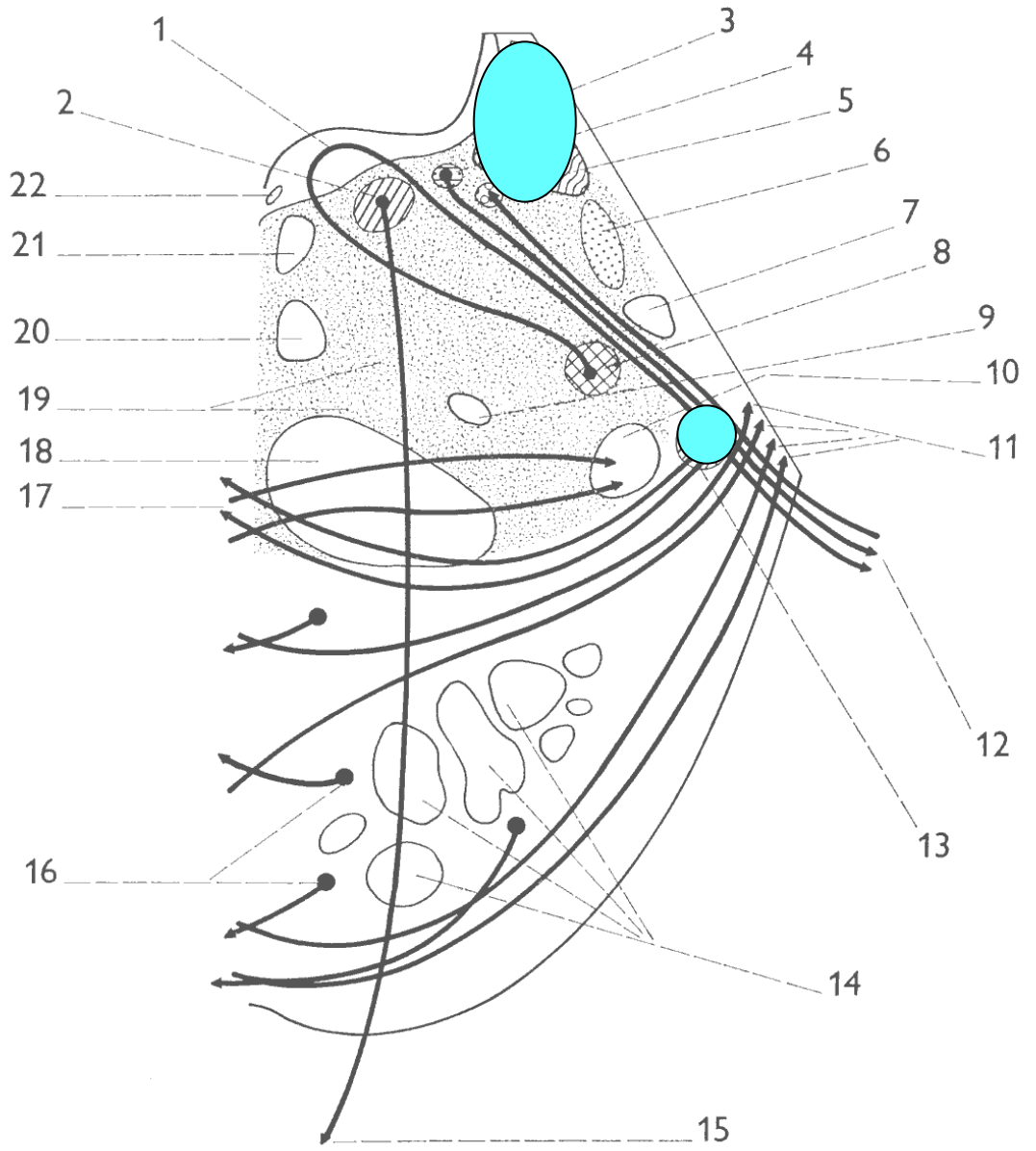
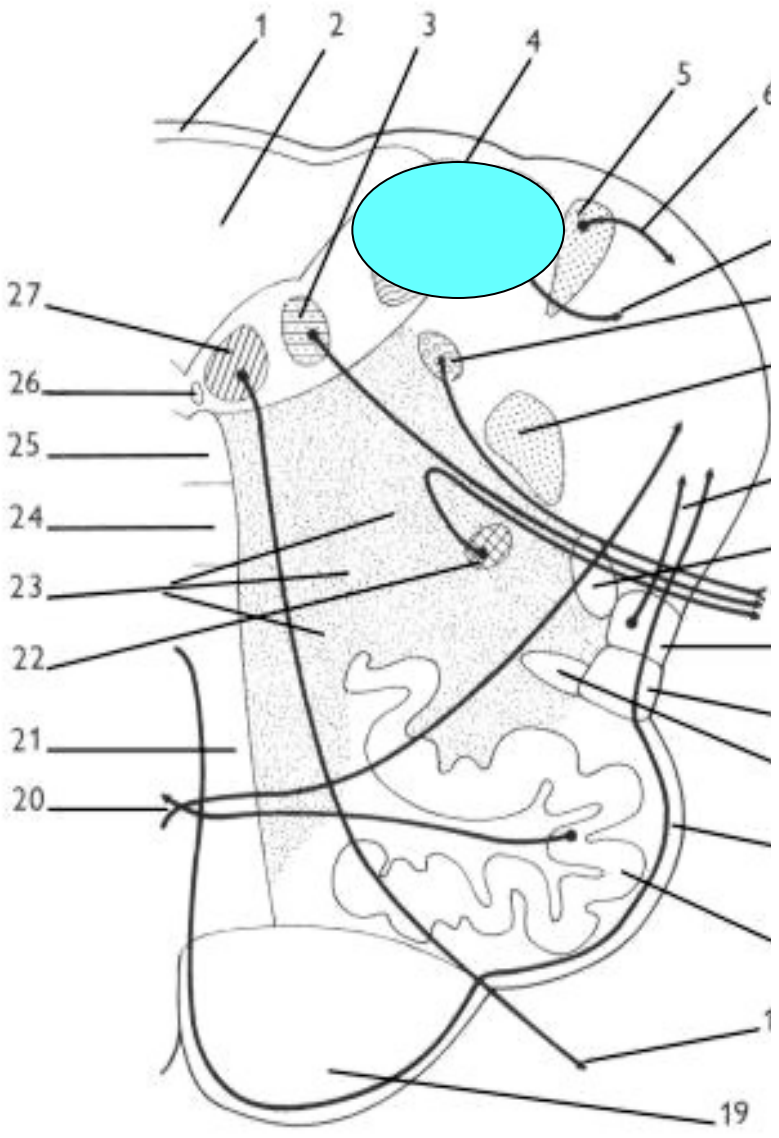


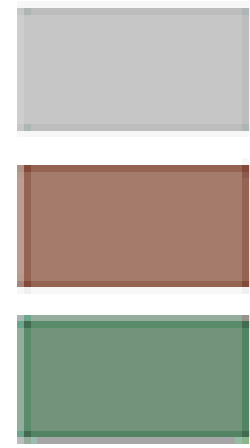
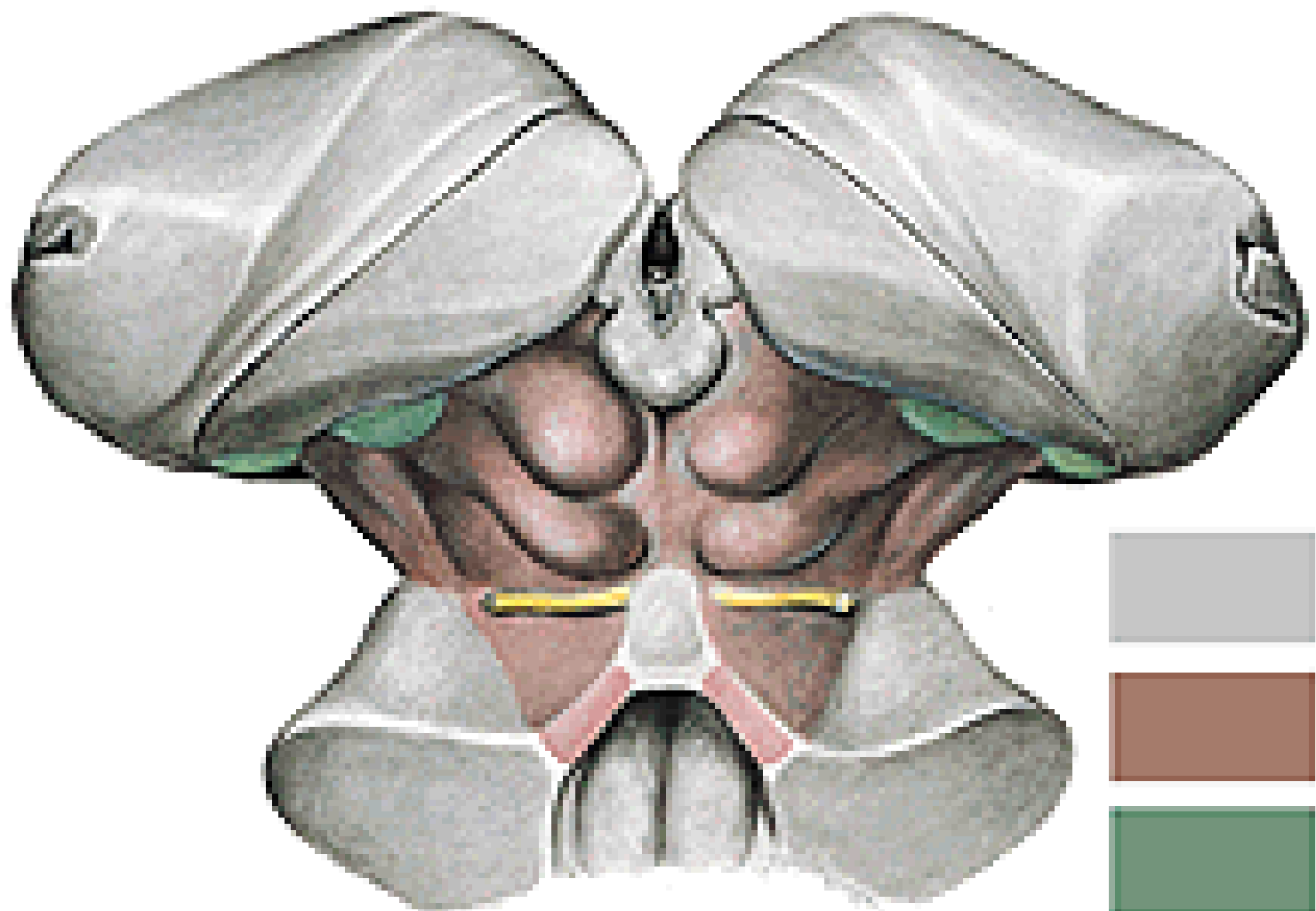


Sensory nuclei of cranial nerves

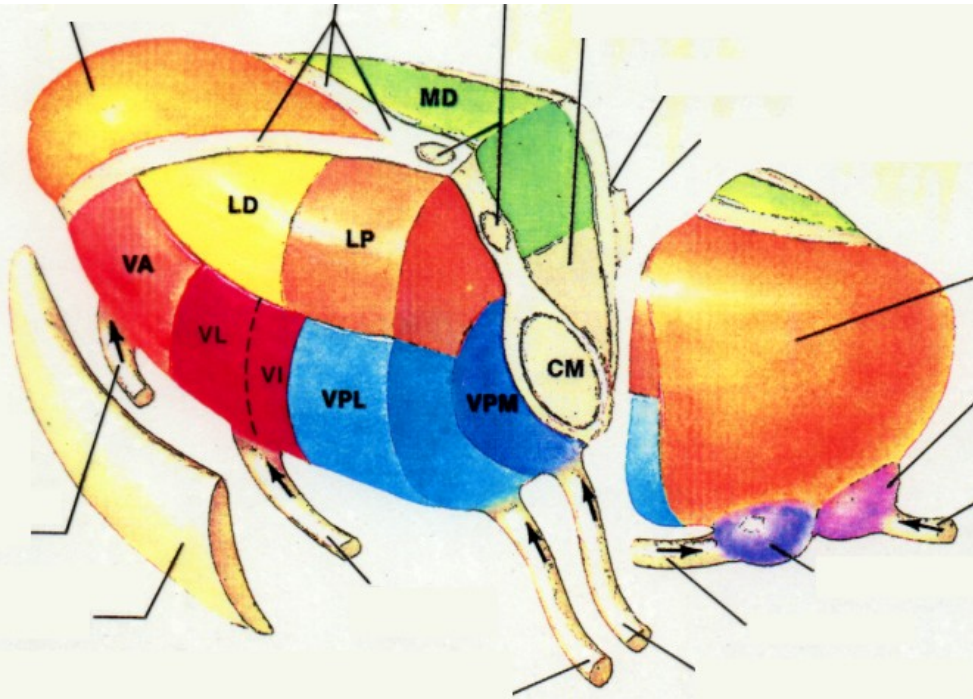


NCLL. COCHLEARES ET VESTIBULARES





THALAMUS



CORTEX

