

**Institute for Microbiology, Medical Faculty of Masaryk University
and St. Anna Faculty Hospital in Brno**

Agents of urinary tract infections

Urinary tract infections (UTIs)

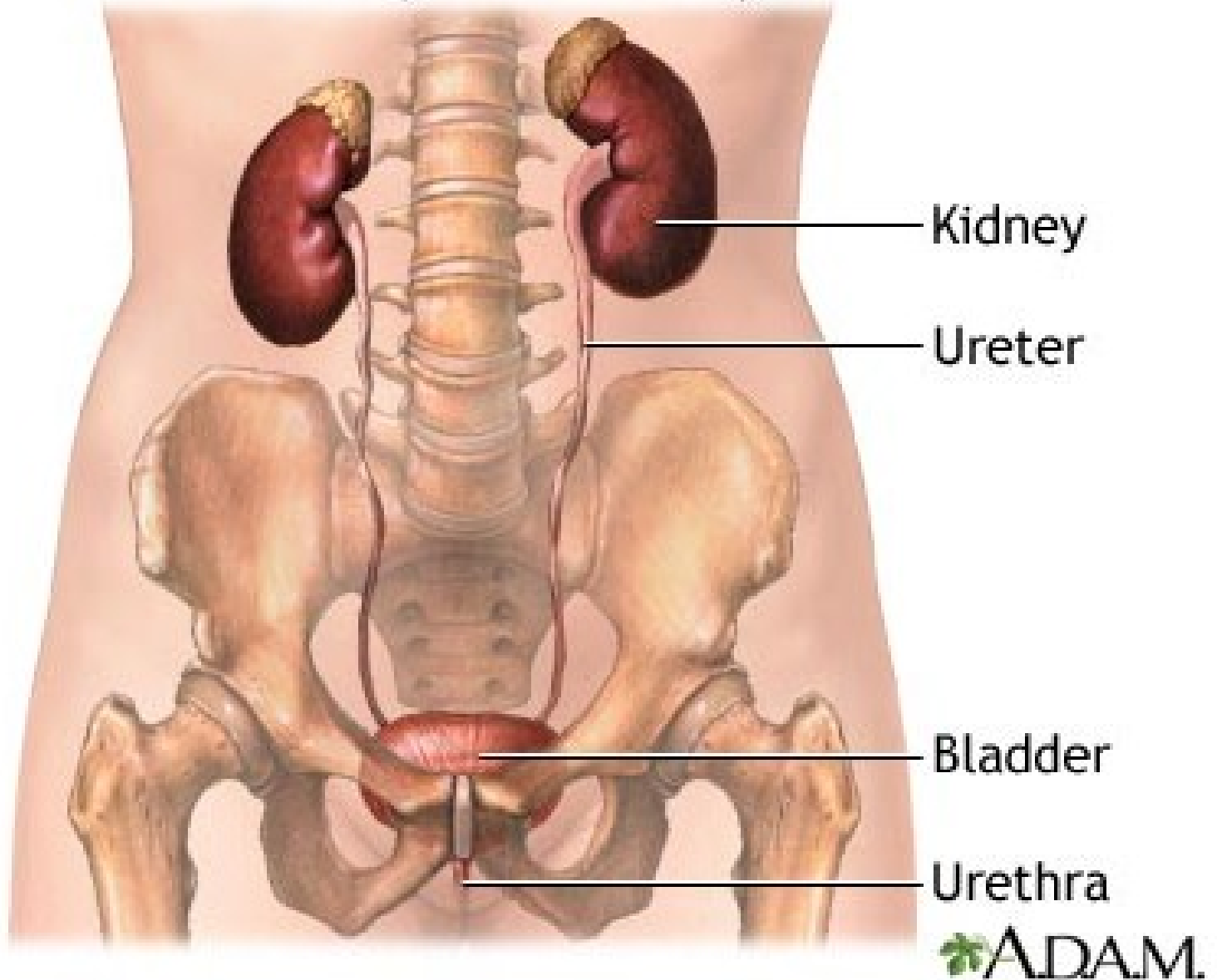
Frequency of UTIs:

2nd most common infections

In adults: the most common infections

Afflicting mainly females (shorter urethra)

Normal anatomy of the urinary tract



Cystitis

- the most common UTI:
- develops **ascendently** caused by **intestinal microflora**
- symptoms:
 - dysuria** (difficult urination with sharp burning pain)
 - pollakisuria** (urgent need to urinate accompanied by urination of a small amount of urine only)

Pyelonephritis

- more serious
 - origin: ascendent or hematogenous
 - symptoms:
fever, chills, flank pain, or costovertebral tenderness, urinary frequency, dysuria, hematuria
- ...urethritis – will be dealt with STD

Etiology of UTIs

Differs in:

- **non-complicated UTIs**
- **structural abnormalities** (prostatic hypertrophy, urinary stones, strictures, pregnancy, congenital defects, permanent catheters)
- **functional disorders** (vesicoureteral reflux, neurological disorders, diabetes mellitus)

Etiology of non-complicated UTIs

1. 80 % *Escherichia coli*

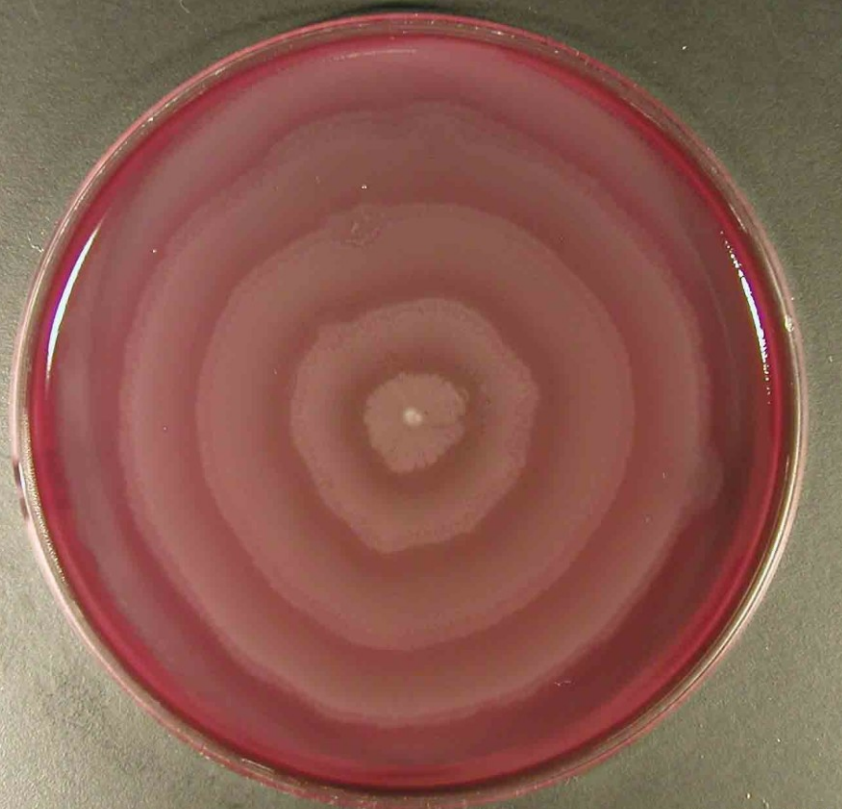
2. 10 % enterococci (*Enterococcus faecalis*)

3. 5 % *Proteus mirabilis*

- other enterobacteria (*Klebsiella pneumoniae*,
Kl. oxytoca, *Ent. cloacae*, *C. freundii* etc.)
- *Streptococcus agalactiae*
- coagulase neg. staphylococci
- yeasts (mainly *Candida albicans*)







www.medmicro.info



<http://biology.clc.uc.edu>

Etiology of complicated UTIs

80 %

Escherichia coli

Klebsiella pneumoniae

Proteus mirabilis

Pseudomonas aeruginosa

enterococci

other enterobacteria

acinetobacters

other G-neg. non-fermenting rods

candidae

***Lege artis* taking a urine sample**

- **after a thorough cleaning incl. external orificium of urethra by soap and water**
- **middle stream of urine**
- **sterile vessel**
- **sterile tube & stopper promptly**
- **process it within 2 hours, or place into 4 °C for 18 hours at most**

COUNTERTHINK

EXPENSIVE URINE

PROZAC : \$143
LIPITOR : \$129
BLOCADREN : \$83
VASOTEC : \$64
PLENDIL : \$85
CHEMOTHERAPY : \$1,350

\$1,854 PER MONTH



QUALITY MULTIVITAMIN : \$28
SUPERFOOD SUPPLEMENT : \$45
MEDICINAL HERBS : \$75
FRESH PRODUCE DAILY : \$225
AGED GARLIC EXTRACT : \$13
POMEGRANATE JUICE : \$60

\$446 PER MONTH

© 2006 by Truth Publishing International, Ltd.

CONCEPT - MIKE ADAMS

ART - DAN BERGER

WWW.NEWSTARGET.COM

Semi-quantitative examination – I

- the kind of microbe in the urine sample
- the amount of the microbe

Because

- high numbers only stand for the UTI
- low numbers mean usually contamination acquired during urination

Semi-quantitative examination – II

The **urine is inoculated** on culture media by a **calibrated loop** taking **1 μ l** of urine

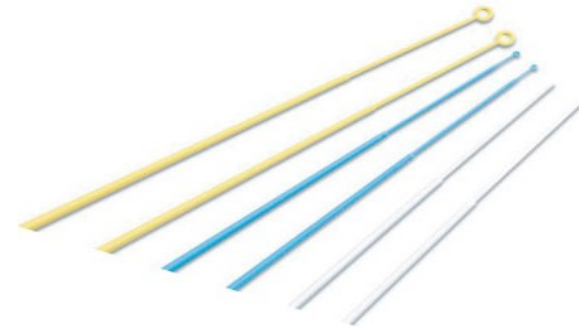
In this case

1 colony means 10^3 CFU/ml

10 colonies mean 10^4 CFU/ml

100 colonies mean 10^5 CFU/ml

(CFU = colony-forming unit = 1 cell)






Significant concentrations of bacteria in urine

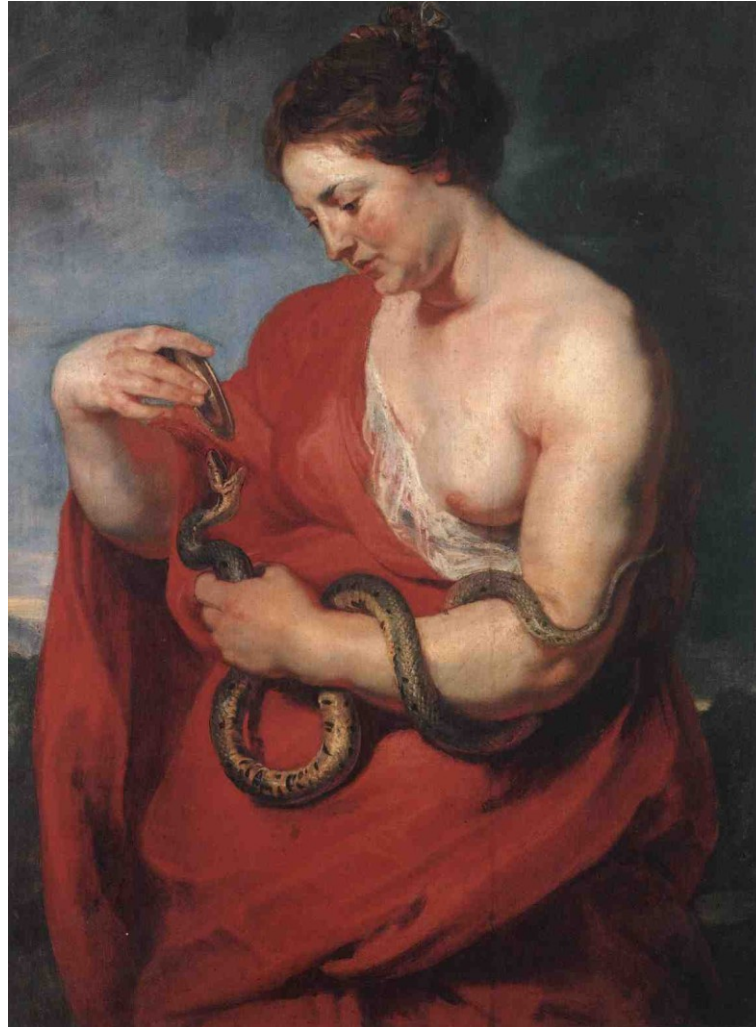
Type of specimen, symptoms	Type of microbe	Significant number (CFU/ml)
Middle stream, symptoms present	Primary urine pathogen	10^3
	Dubious urine pathogen	10^5
Middle stream, no symptoms	Any	10^5
Suprapubic puncture	Any	10^1

Therapy

- Trimethoprim
 - Nitrofurantoin
 - Cephalexin
 - Amoxicillin

 - in complicated UTIs ATB sensitivity assessment
 - **ESBL strains**
- 

Paulus Peeter Rubens (1577-1640): Goddess of health Hygiene (1615)



Detail

Paulus Peeter Rubens (1577-1640): Goddess of health Hygiene (1615)

