

Class III.

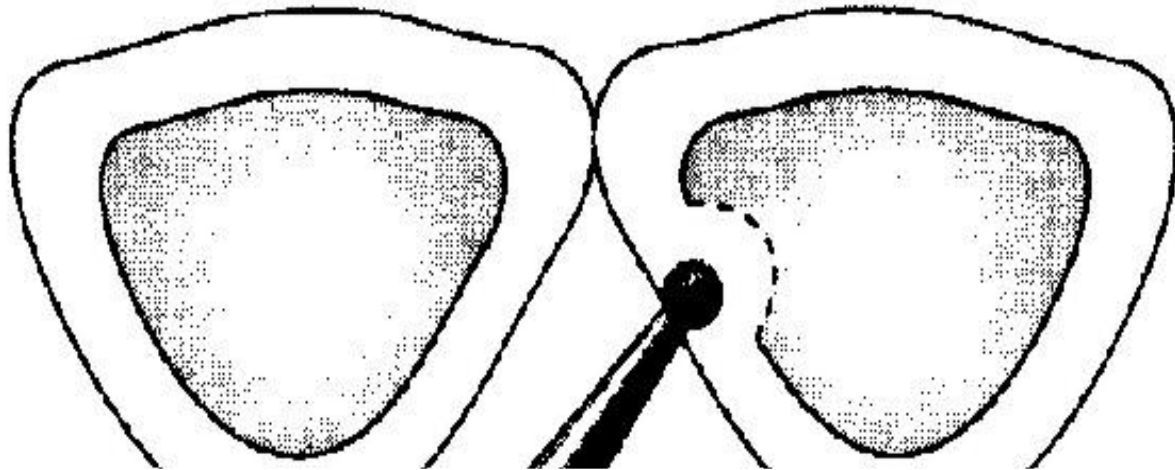
Proximal surface of frontal teeth (incisors and canines) without loss of the incisal edge



Access to the cavity

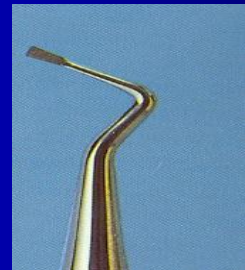


- **Through the enamel from the oral side**
- **- the round diamond, obliquely from the side of the neighboring tooth**
- **Removal of old filling**
- **Separation of teeth using wooden wedges can be helpful**
- **Removal of hyperplastic gingiva**



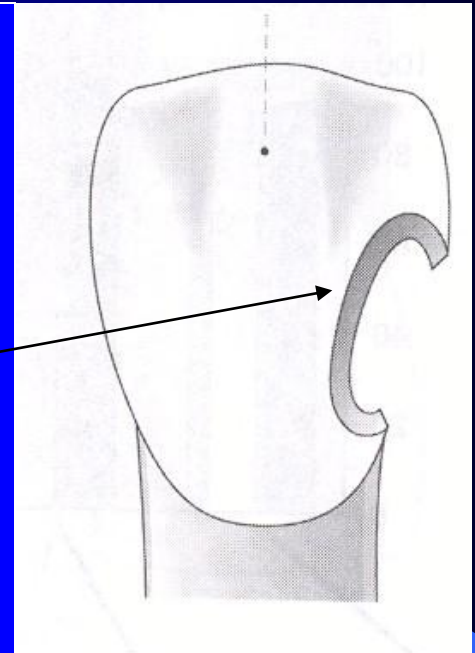
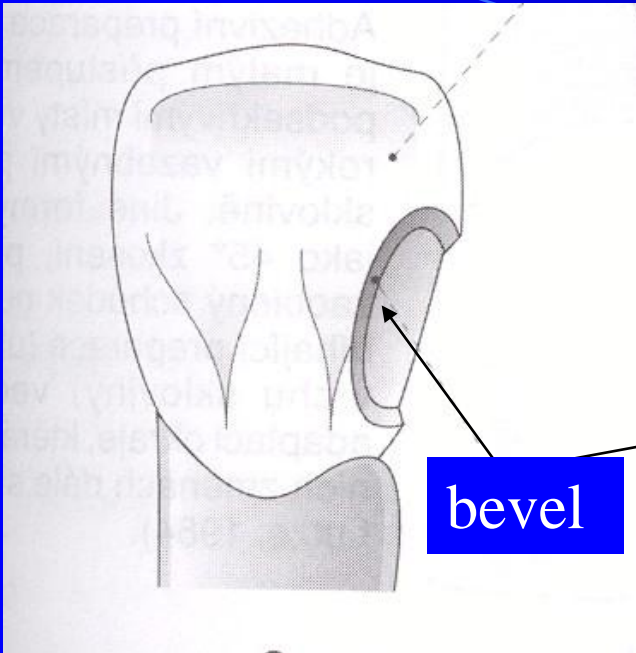
Cavosurface margin

-
- The size of the cavity depends on dental caries, do not extend!!!
- Excavation of carious dentin



Retention

- Enamel must be beveled (retentive border – shallow groove).



Dry operating field



Acid etching



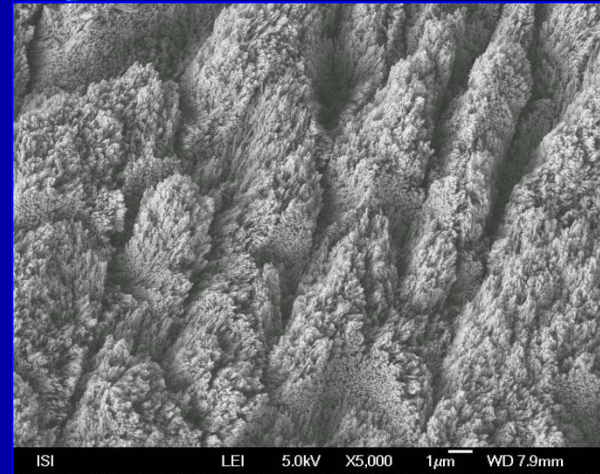
Bonding



Surface morphology for adhesion

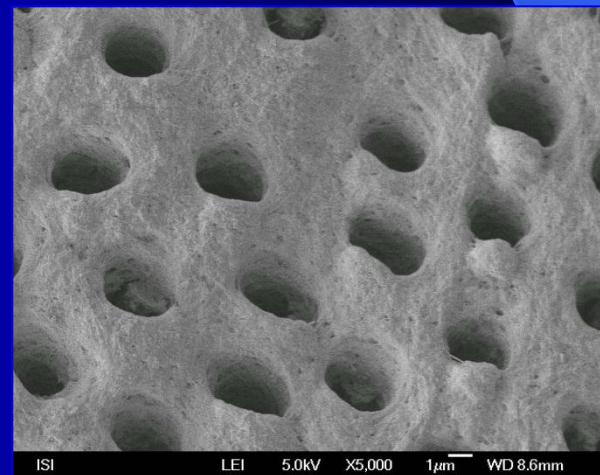
➤ Enamel

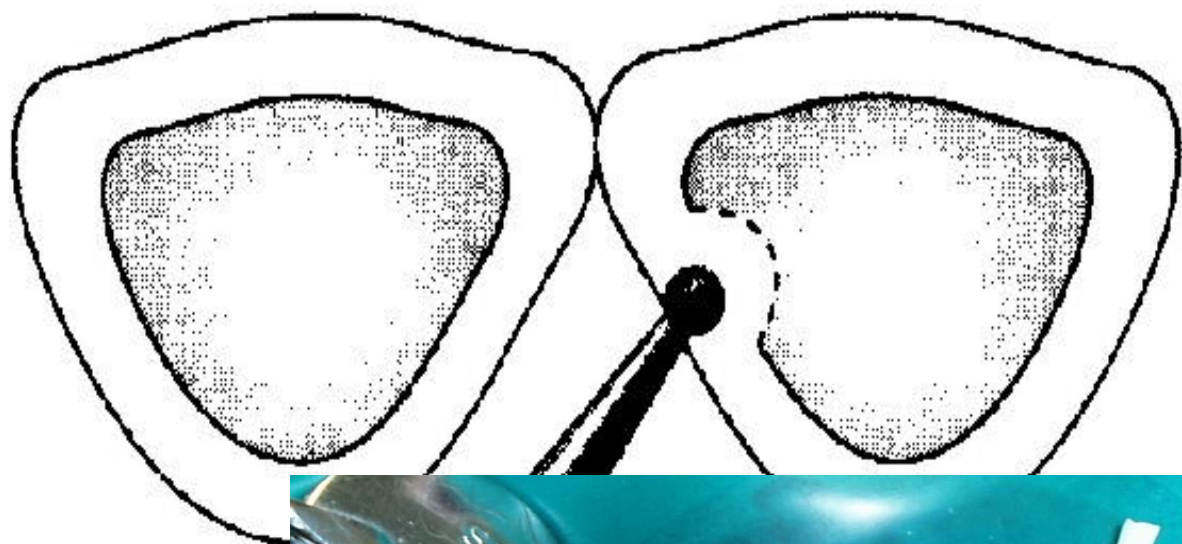
- regular surface with opened inter/intraprismatic spaces



➤ Dentin

- no smear layer
- opened dentinal tubules
- collagen network available





Control of cavities



suché pole !!!

Etching, rinsing, drying



Bonding



Cleaning of teeth



Cavity preparation



Etching



- During acid etching and preparation
- the protection of neiborough tooth is necessary using a metal strip

Matrix and wedge, bonding



Layering of composite



Layering of composite



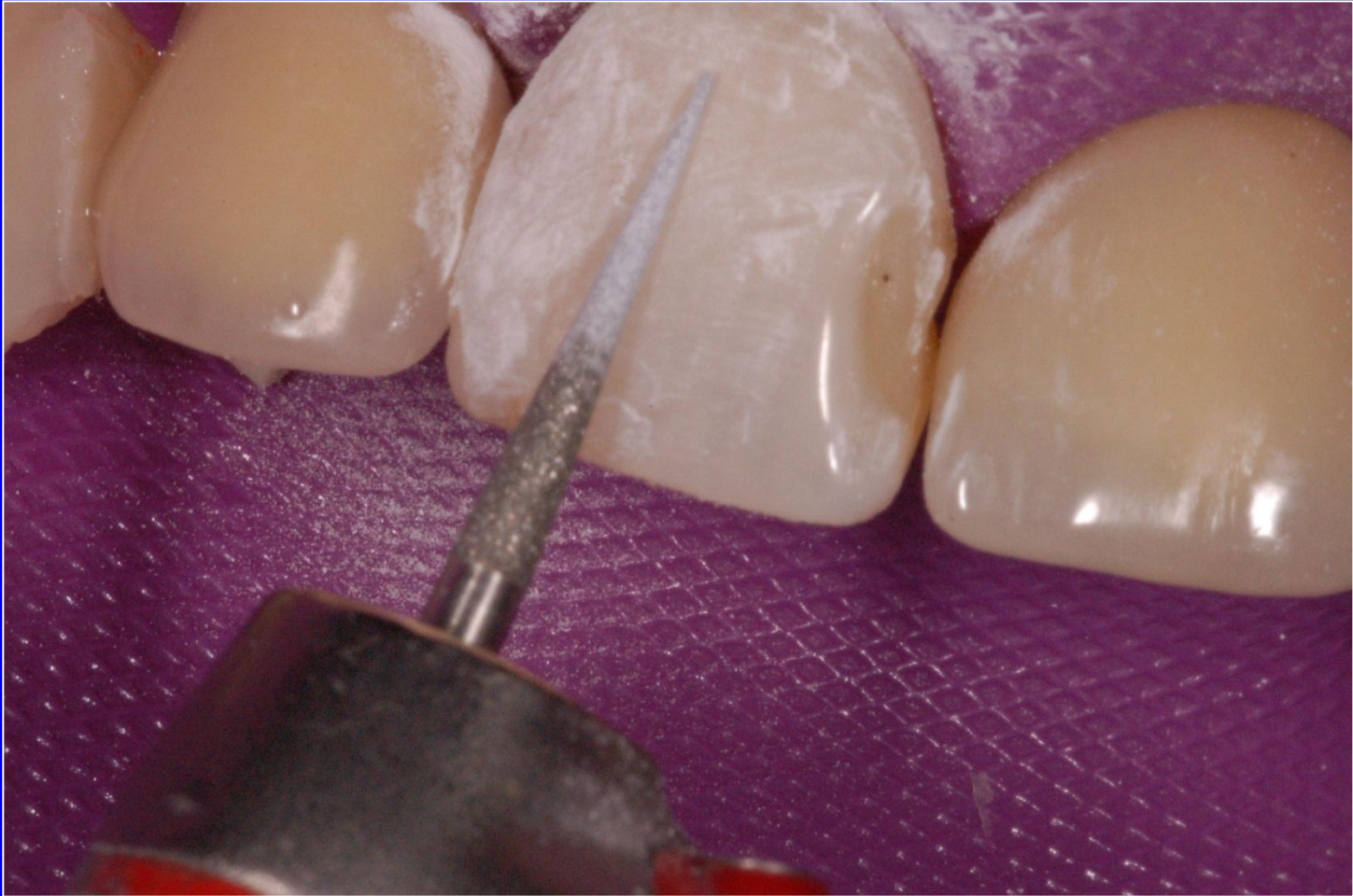
Before finishing



Matrix has been removed



Finishing



Polishing



Finished filling



