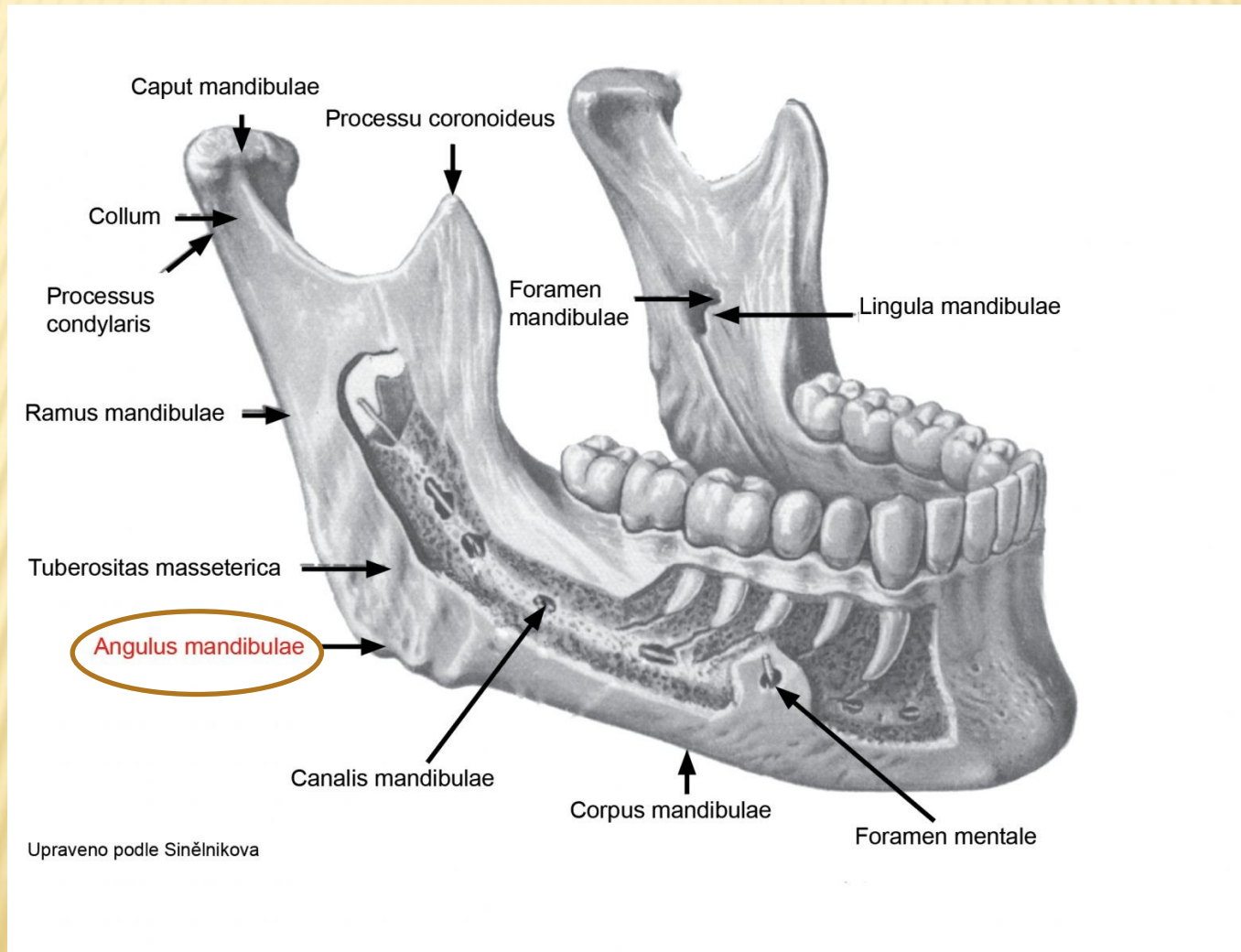
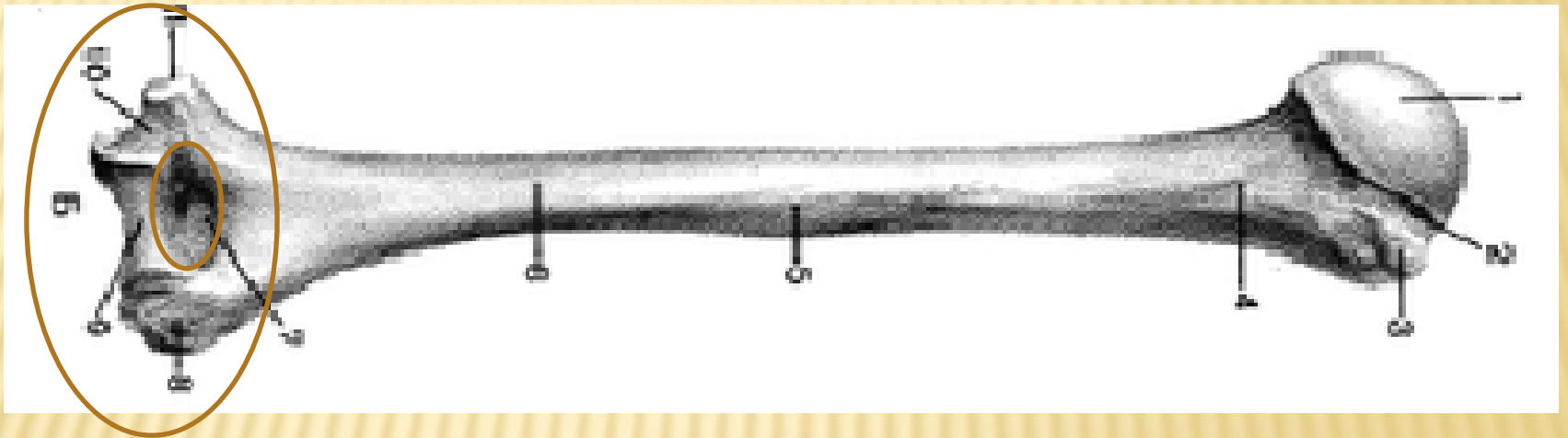


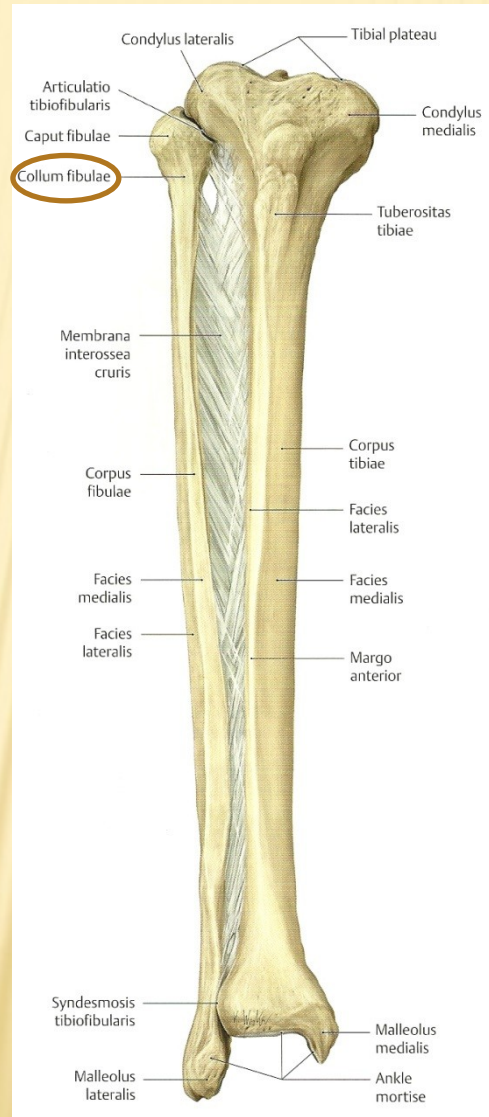
ANGULUS MANDIBULAE



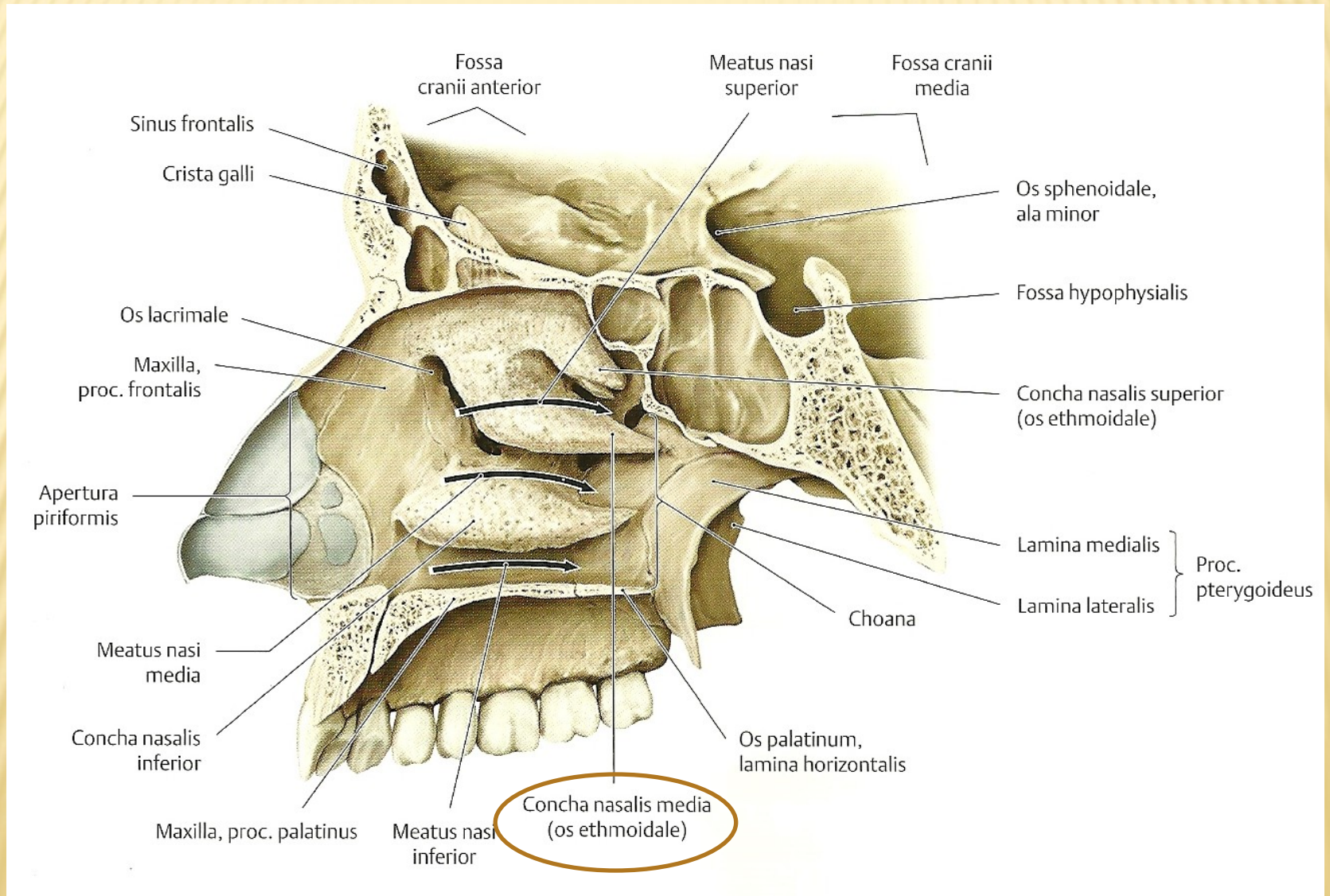
CONDYLUS HUMERI, FOSSA OLECRANI



COLLUM FIBULAE



CONCHA NASI MEDIA



DIAMETER OBLIQUA, TRANSVERSA

Female pelvis: Superior view

Diameter interspinalis

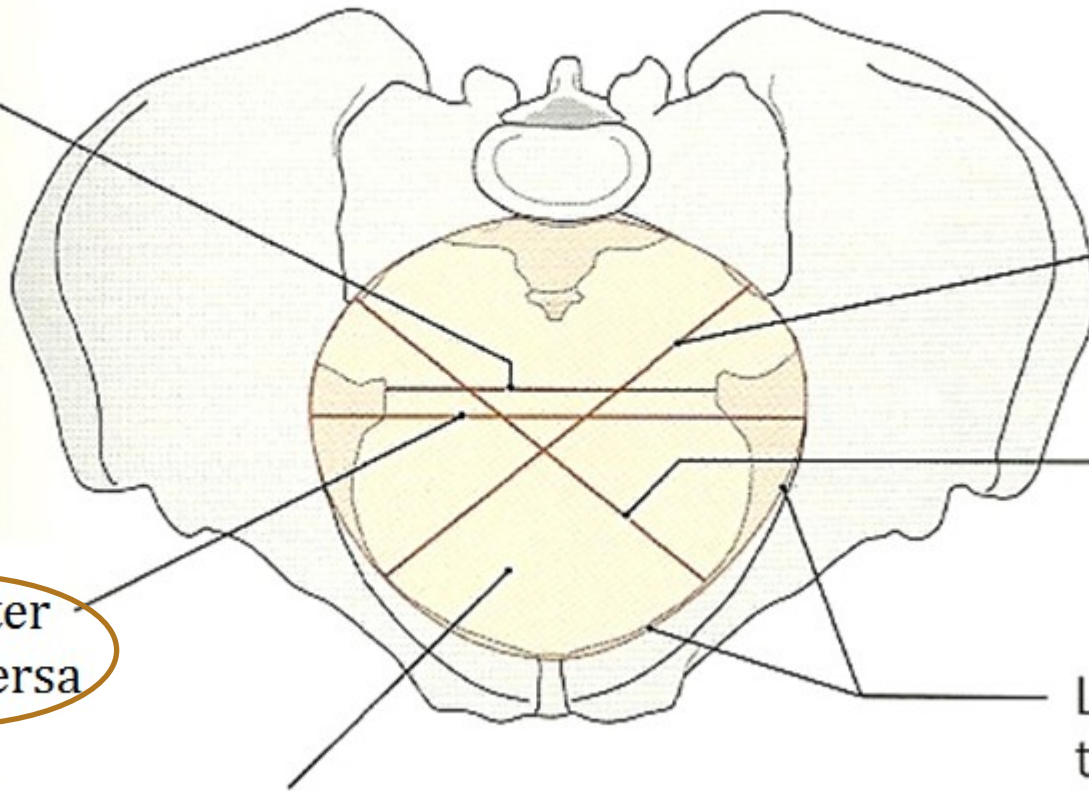
Diameter obliqua II

Diameter obliqua I

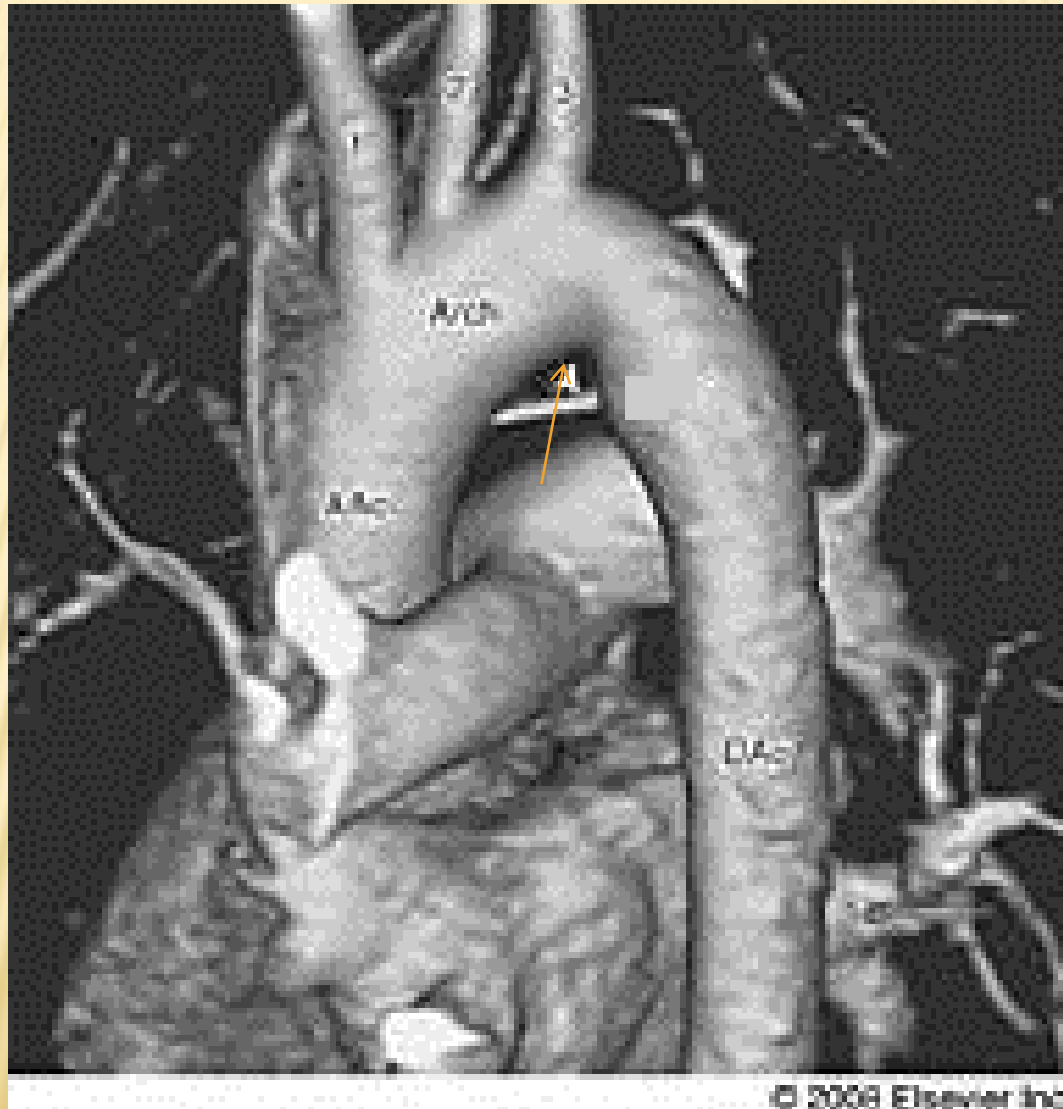
Diameter transversa

Linea terminalis

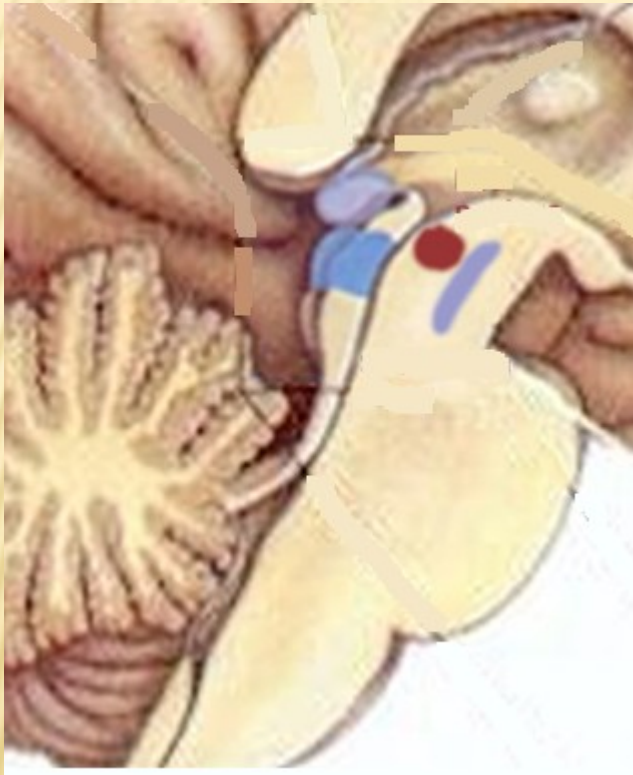
Apertura pelvis superior



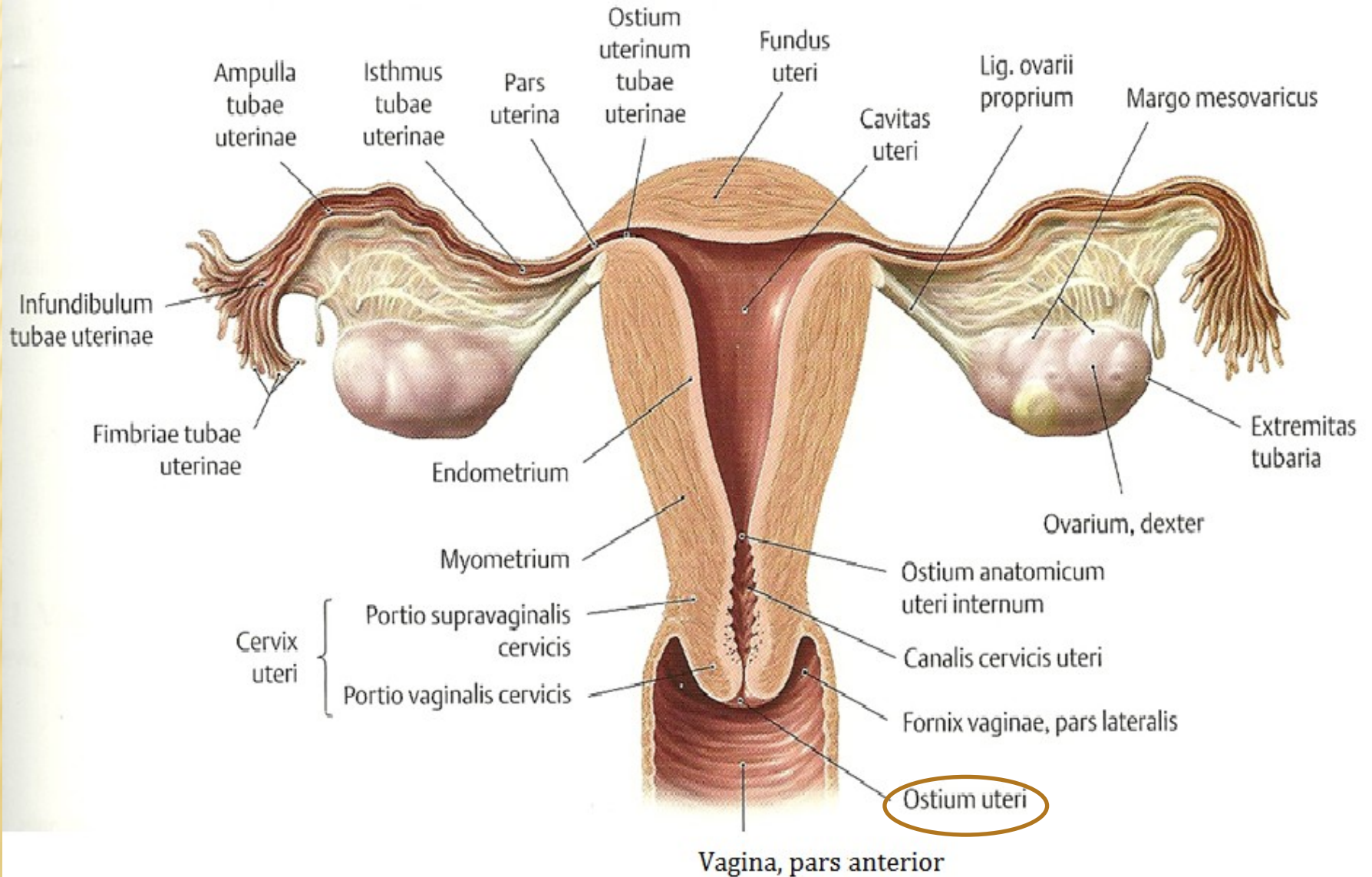
ISTHMUS AORTAE



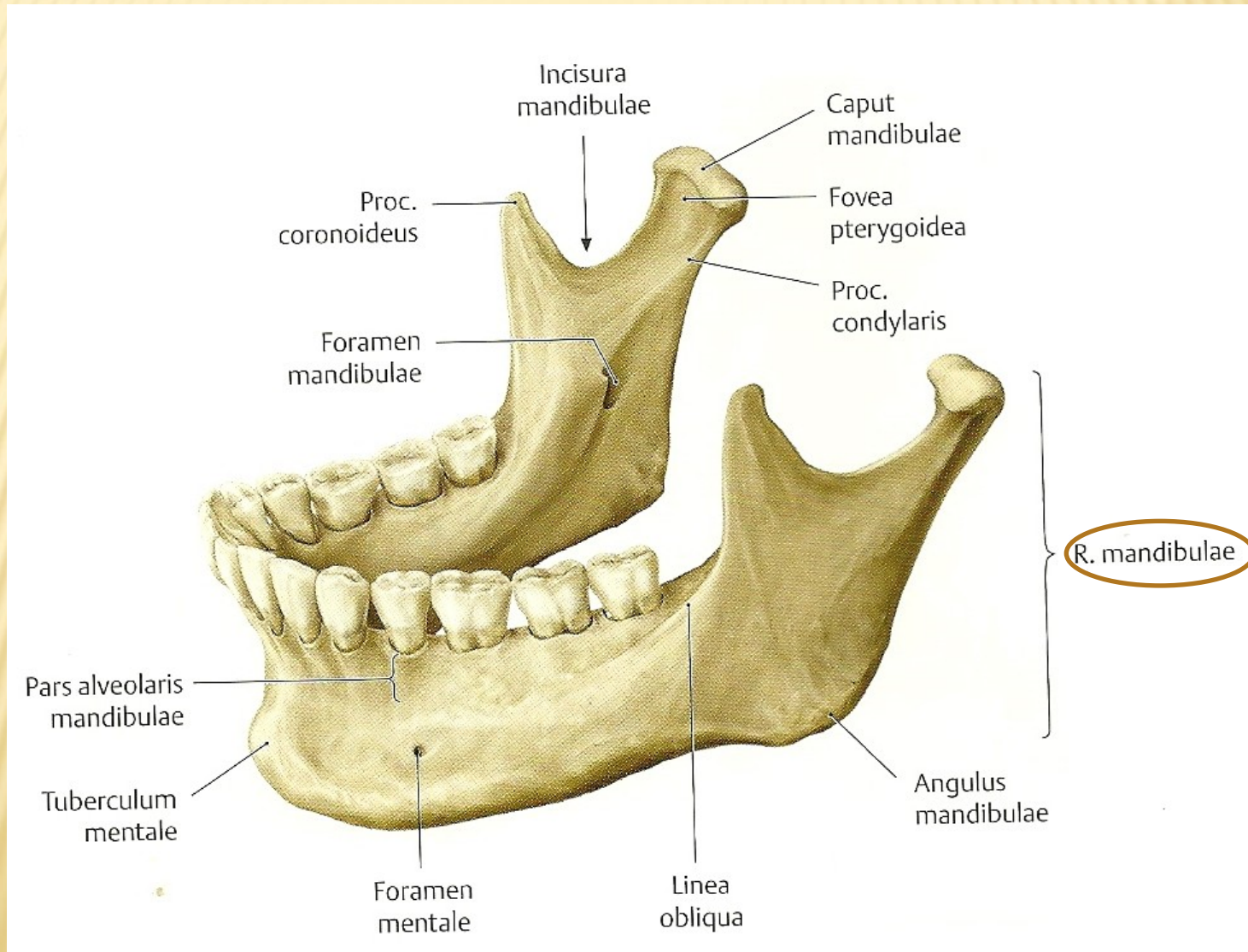
NUCLEUS RUBER



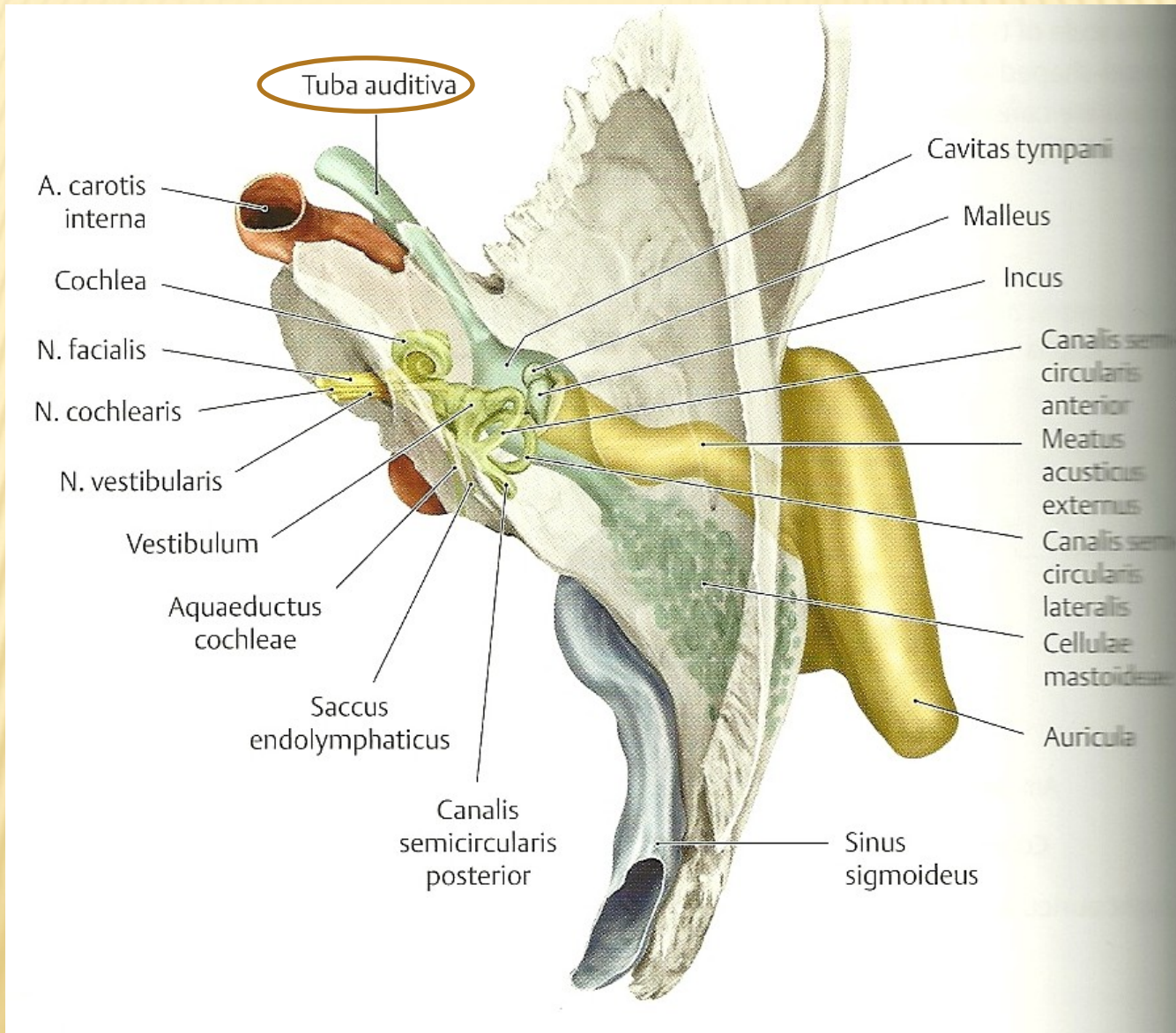
OSTIUM UTERI



RAMUS MANDIBULAE



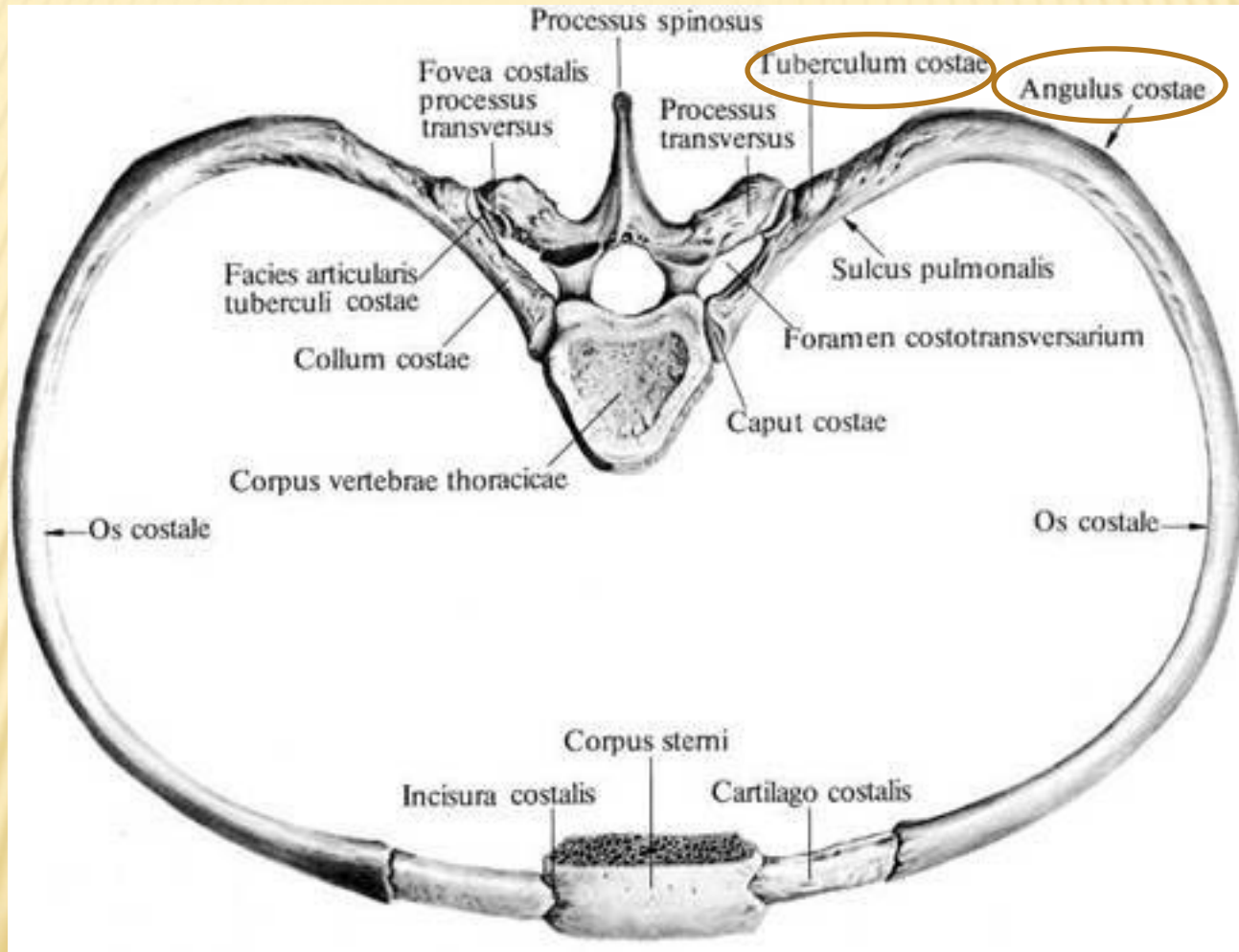
TUBA AUDITIVA



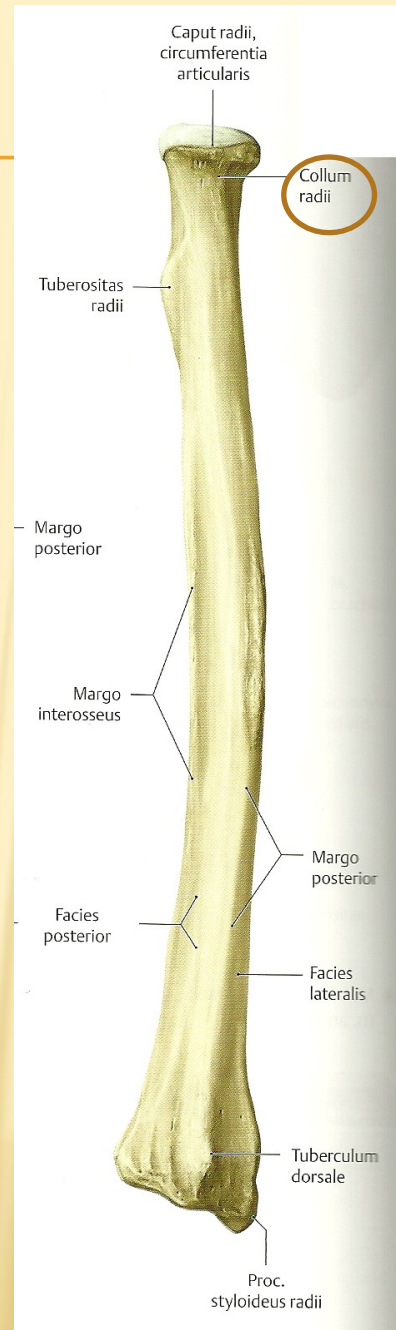
TALUS



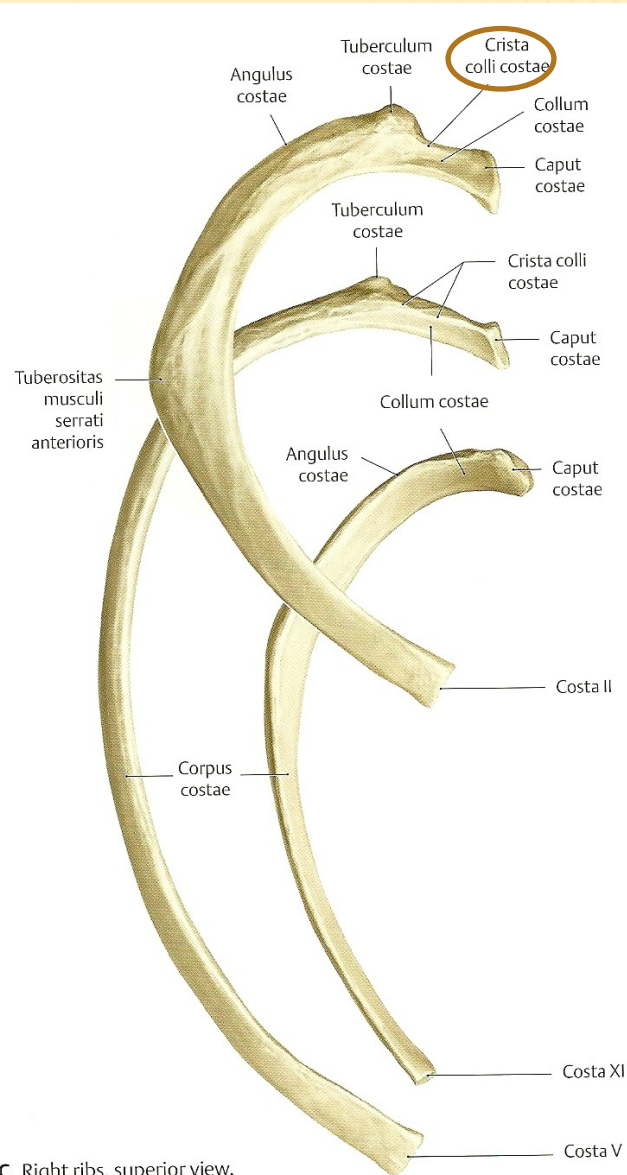
TUBERCULUM COSTAE, ANGULUS COSTAE



COLLUM RADII

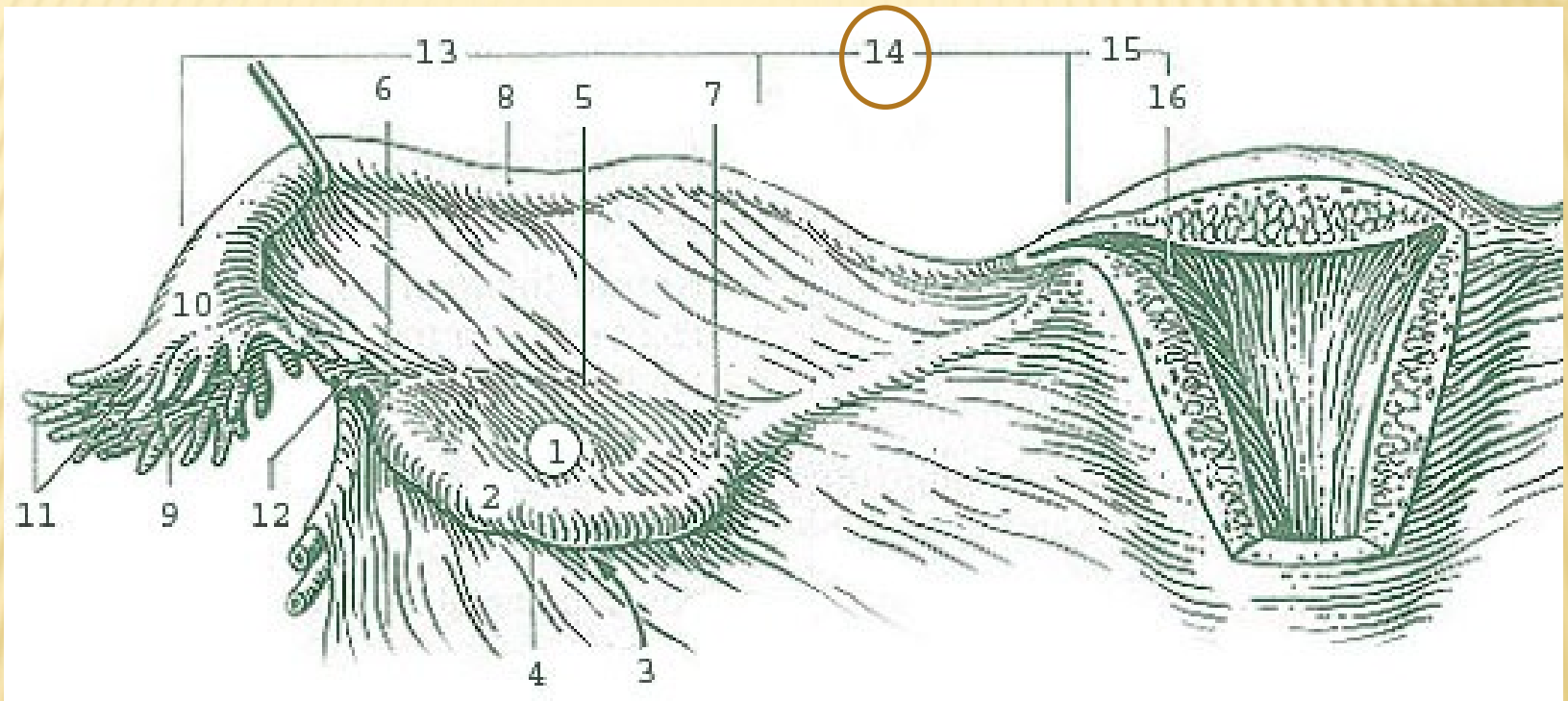


CRISTA COLLI COSTAE

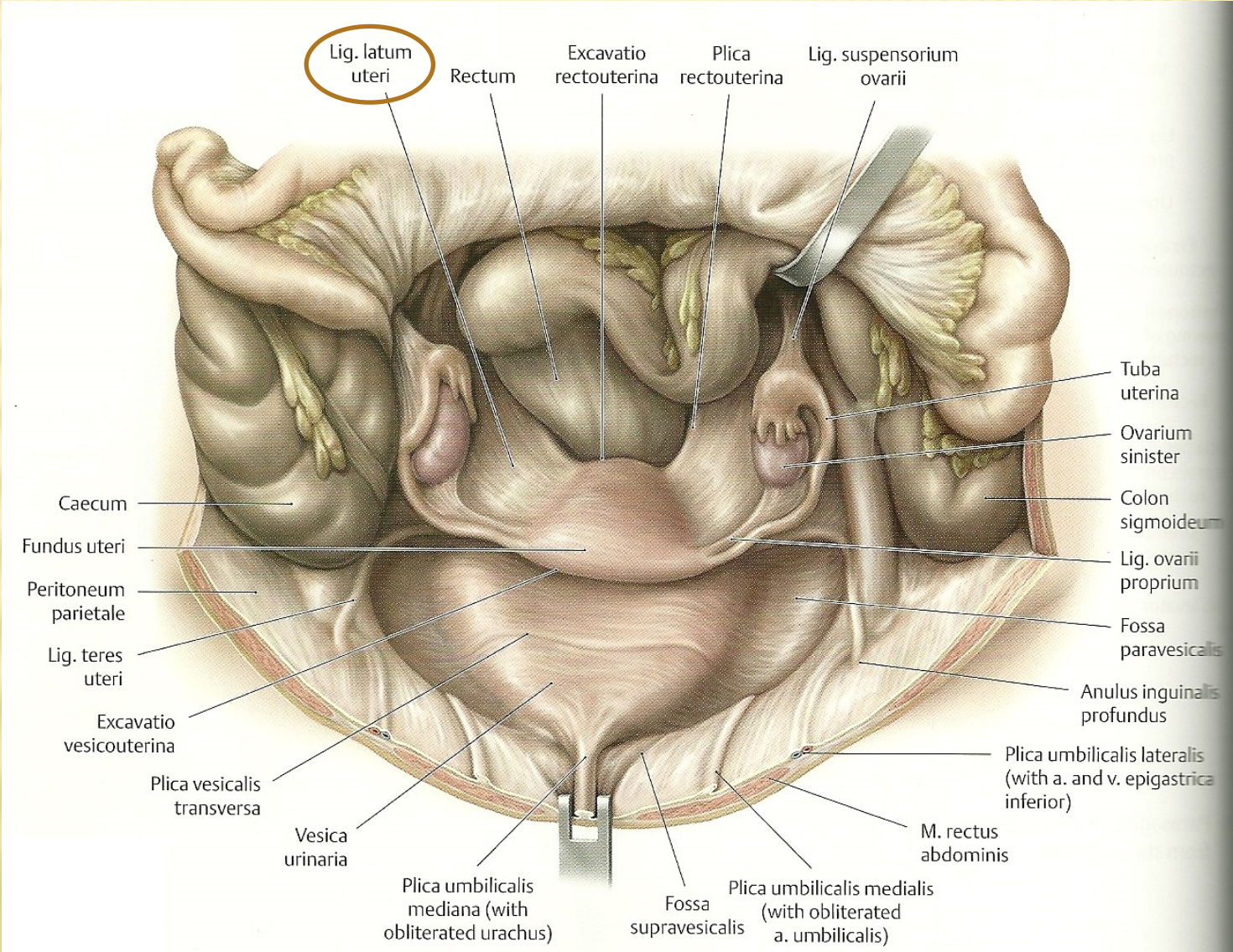


C Right ribs, superior view.

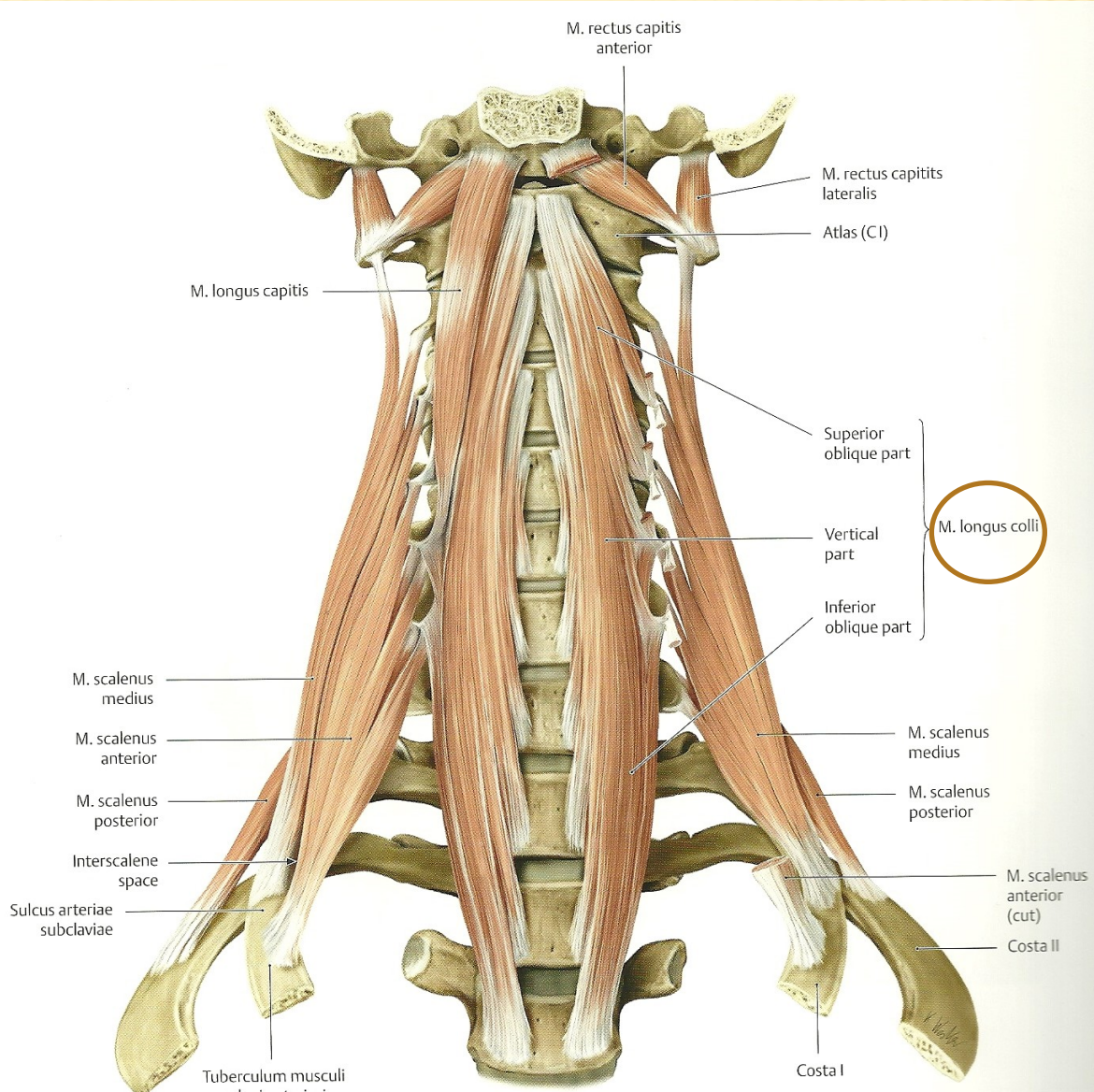
ISTHMUS TUBAE UTERINAE



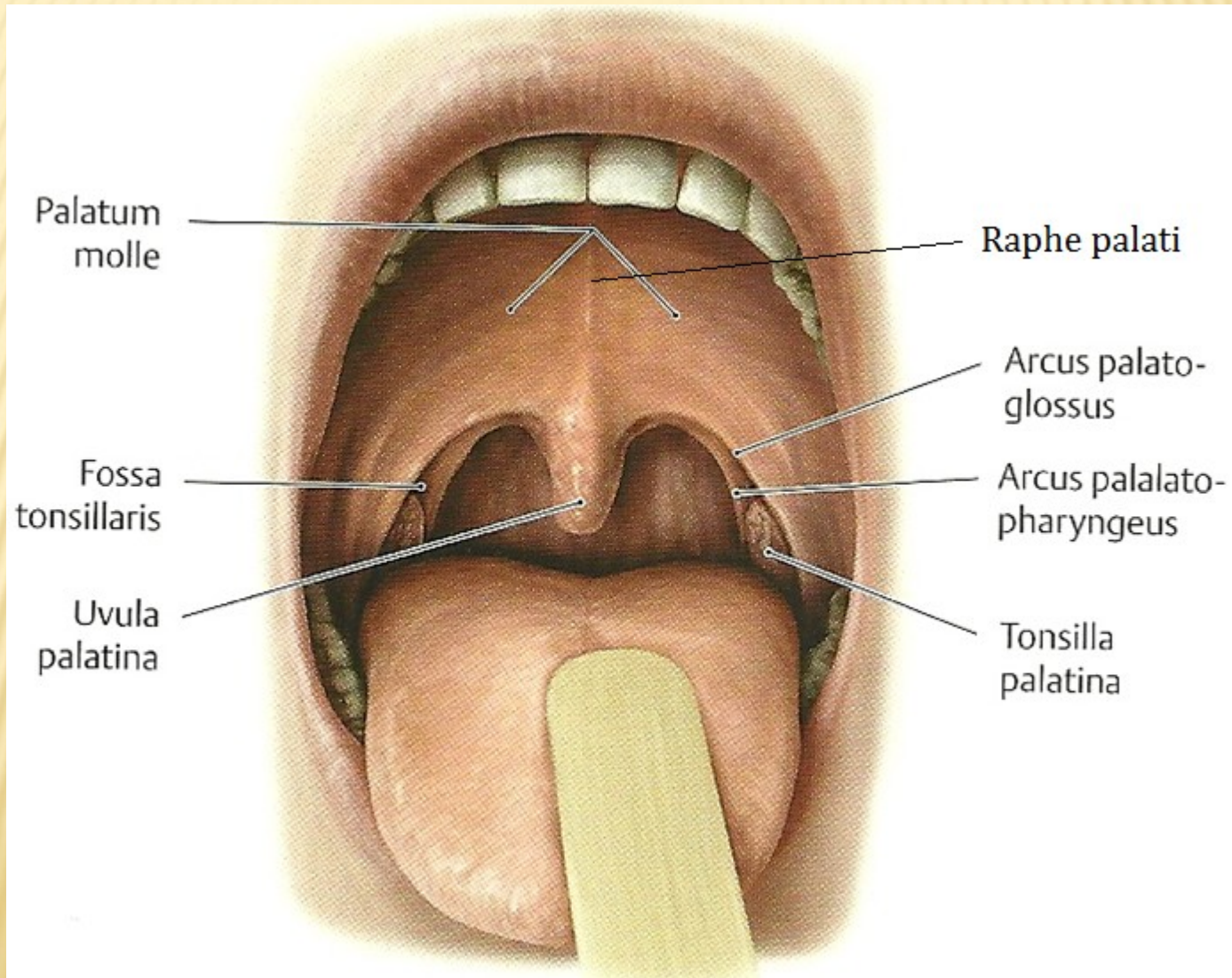
LIGAMENTUM LATUM UTERI



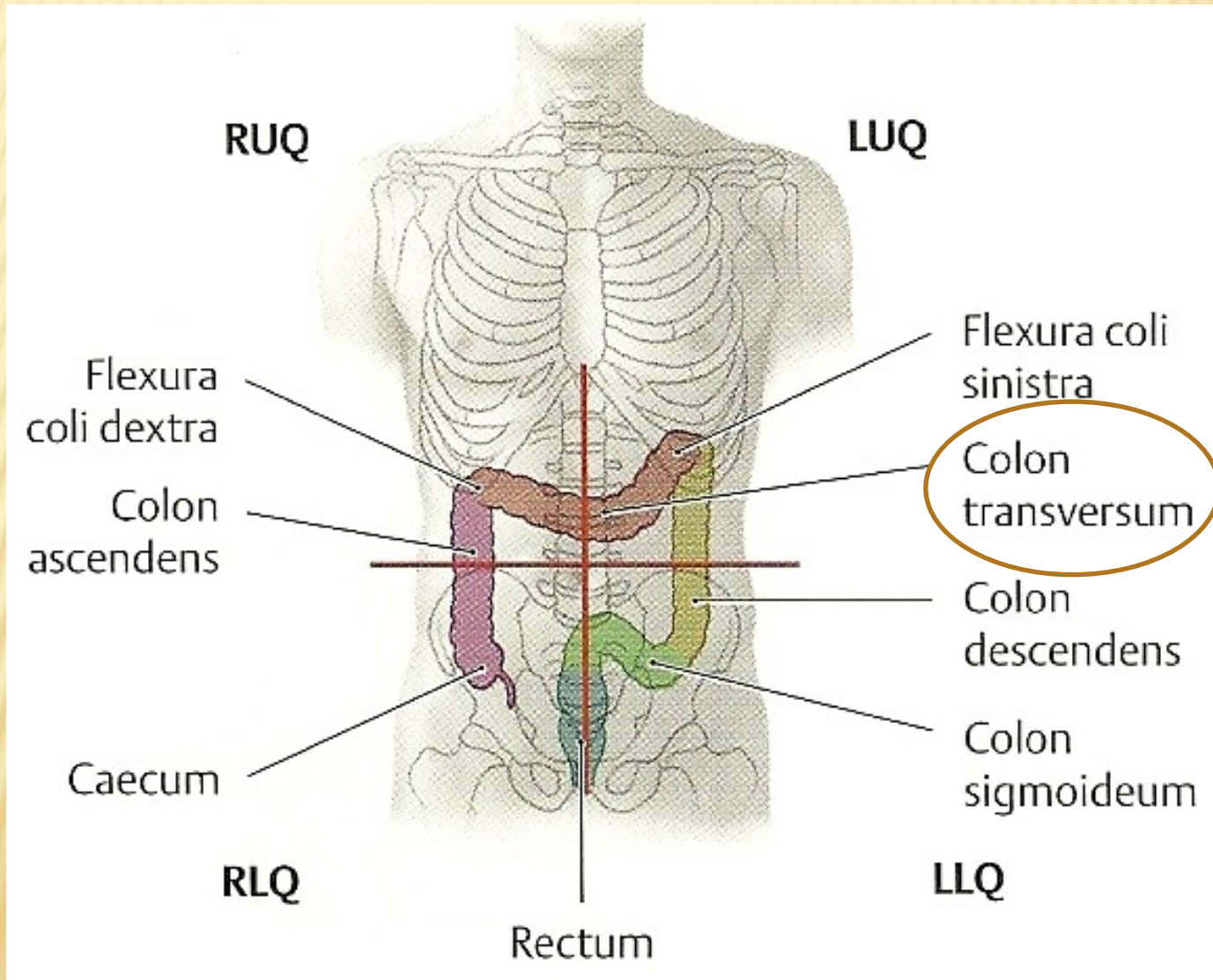
MUSCULUS LONGUS COLLI



RAPHE PALATI



COLON TRANSVERSUM



FOSSA CRANII MEDIA

