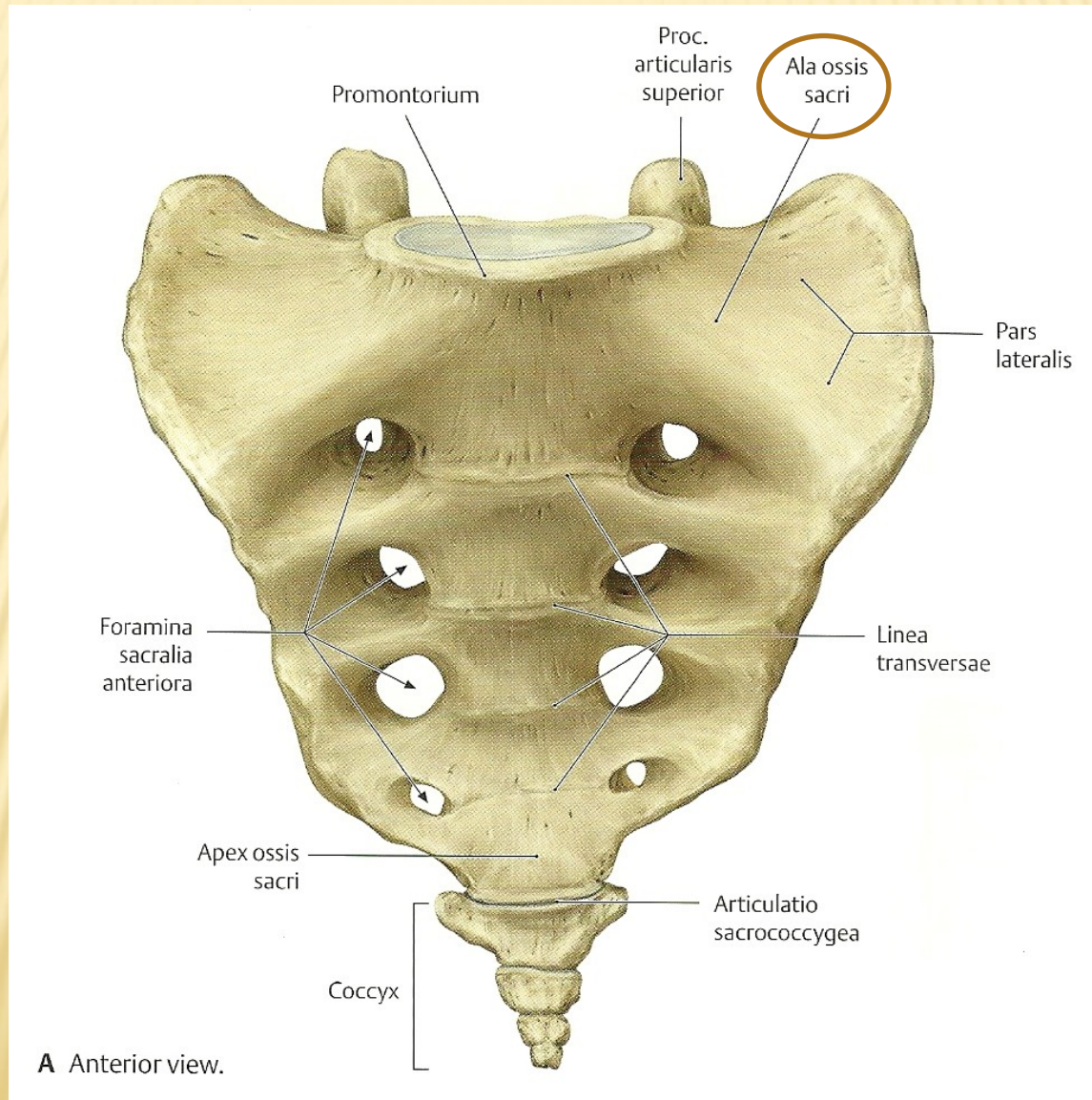
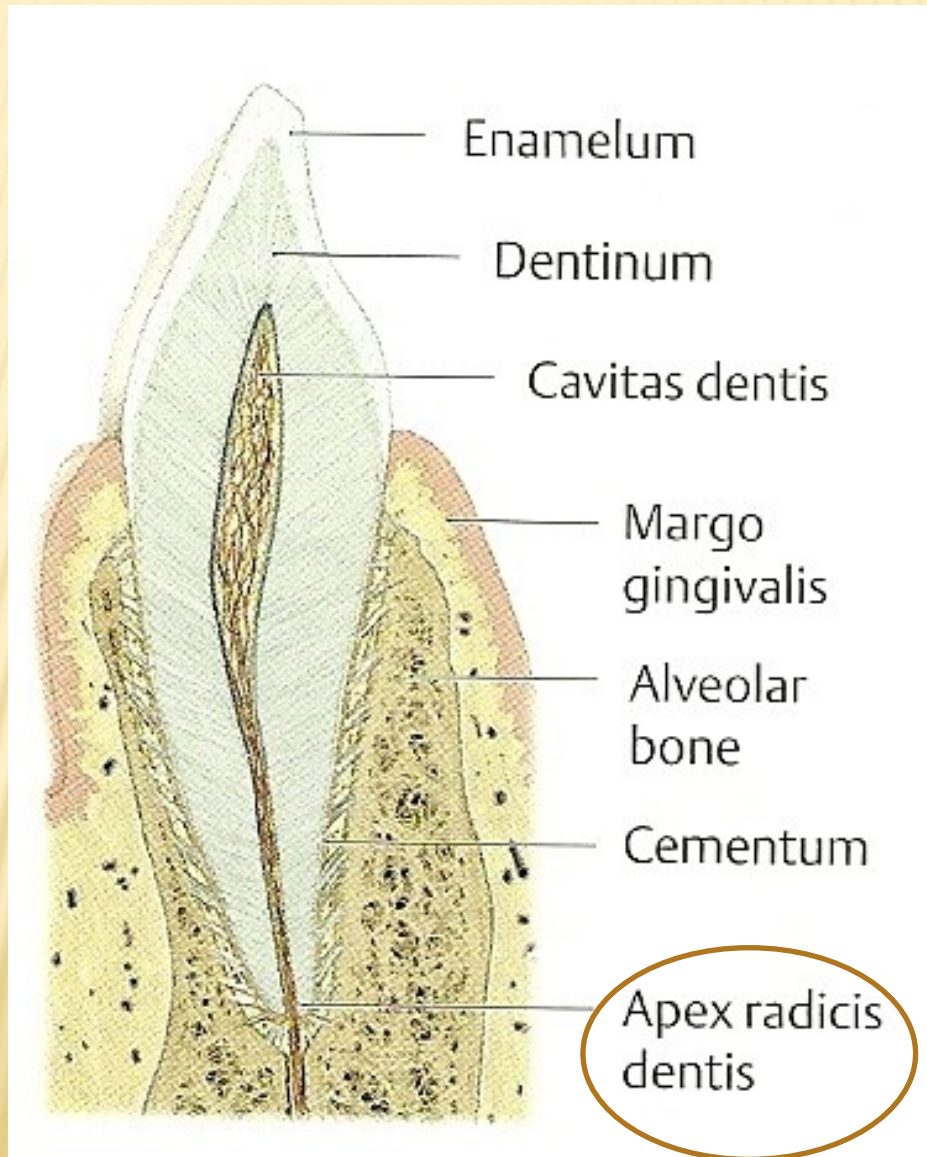


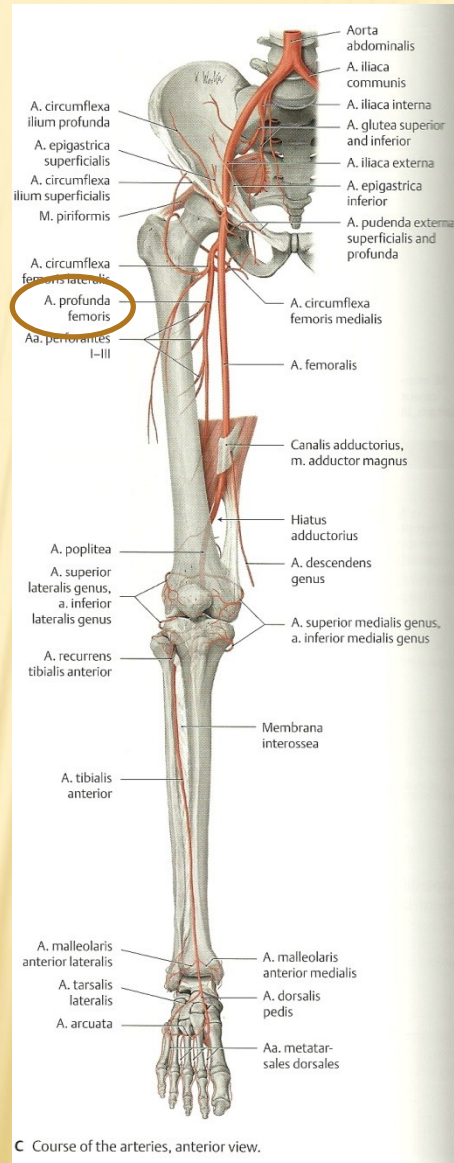
ALA OSSIS SACRI



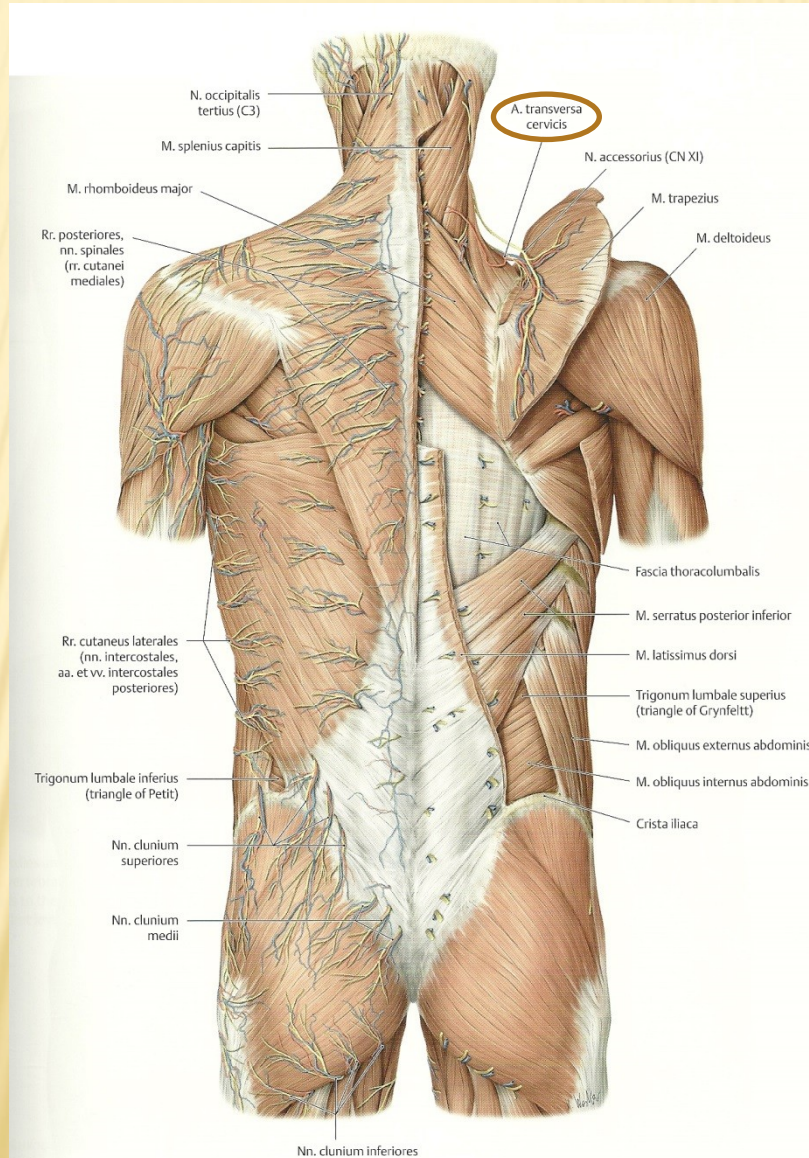
APEX RADICIS DENTIS



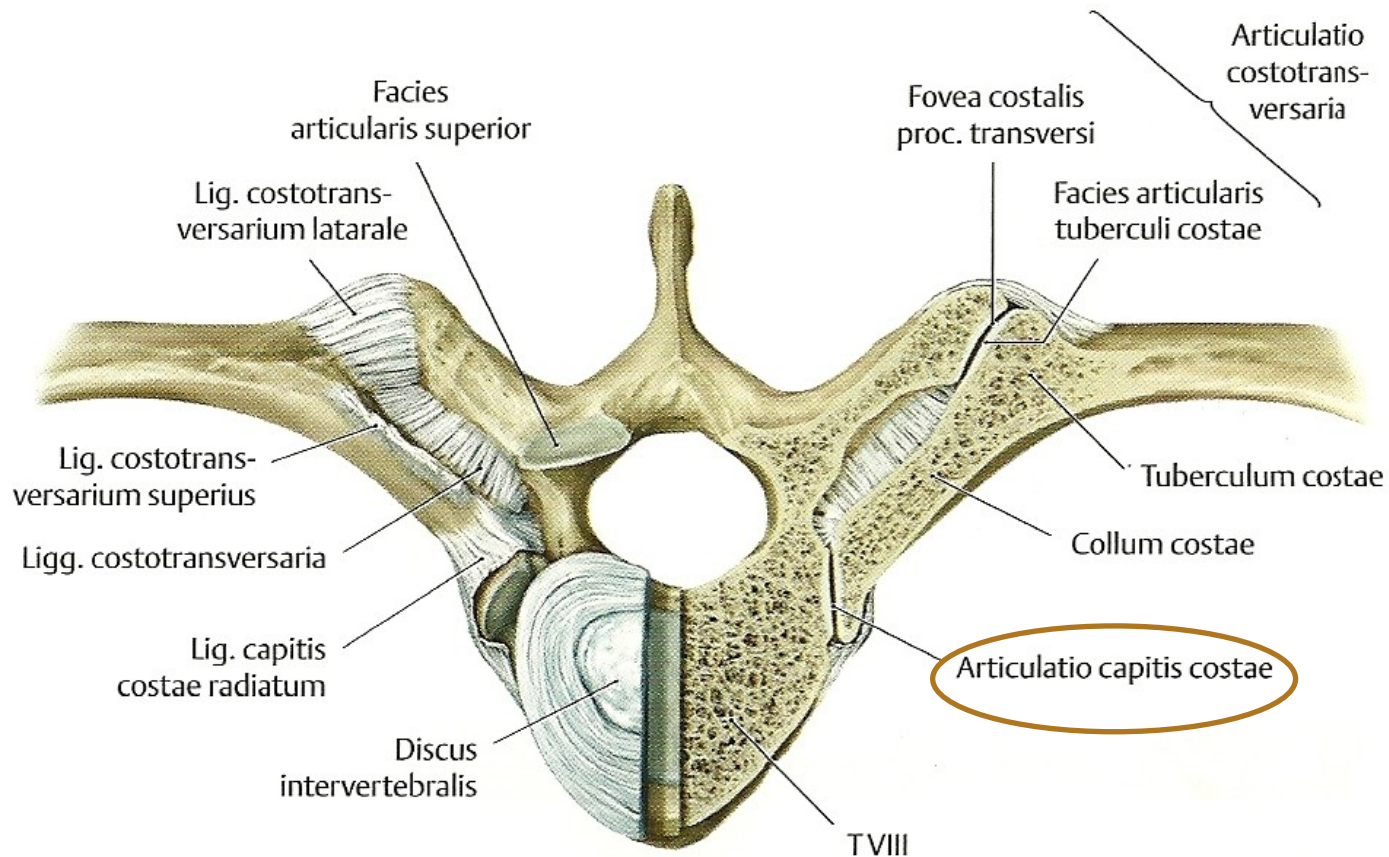
ARTERIA PROFUNDA FEMORIS



ARTERIA TRANSVERSA CERVICIS

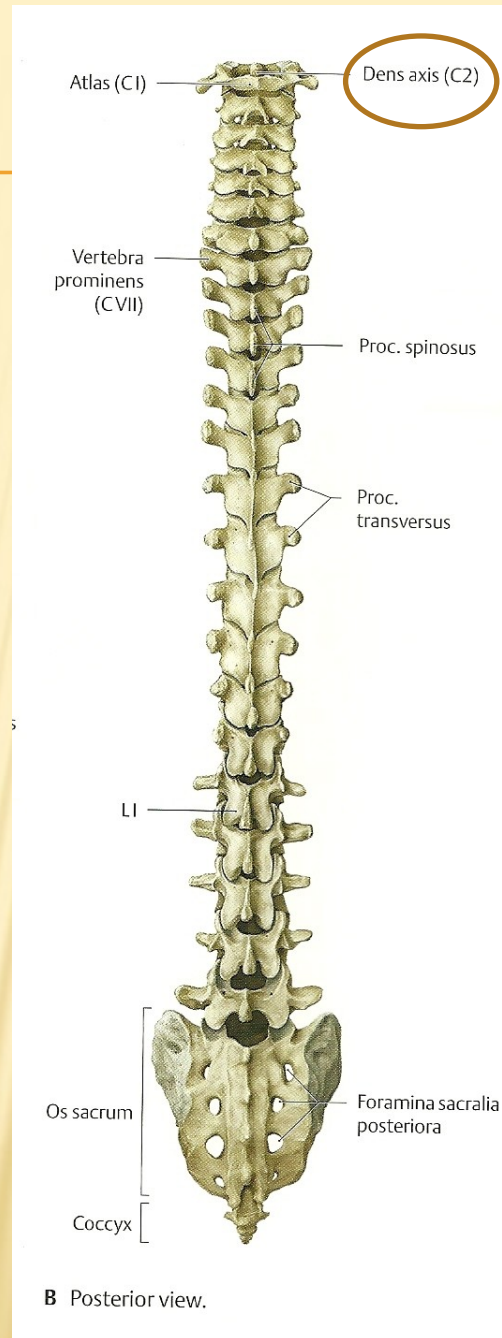


ARTICULATIO CAPITIS COSTAE



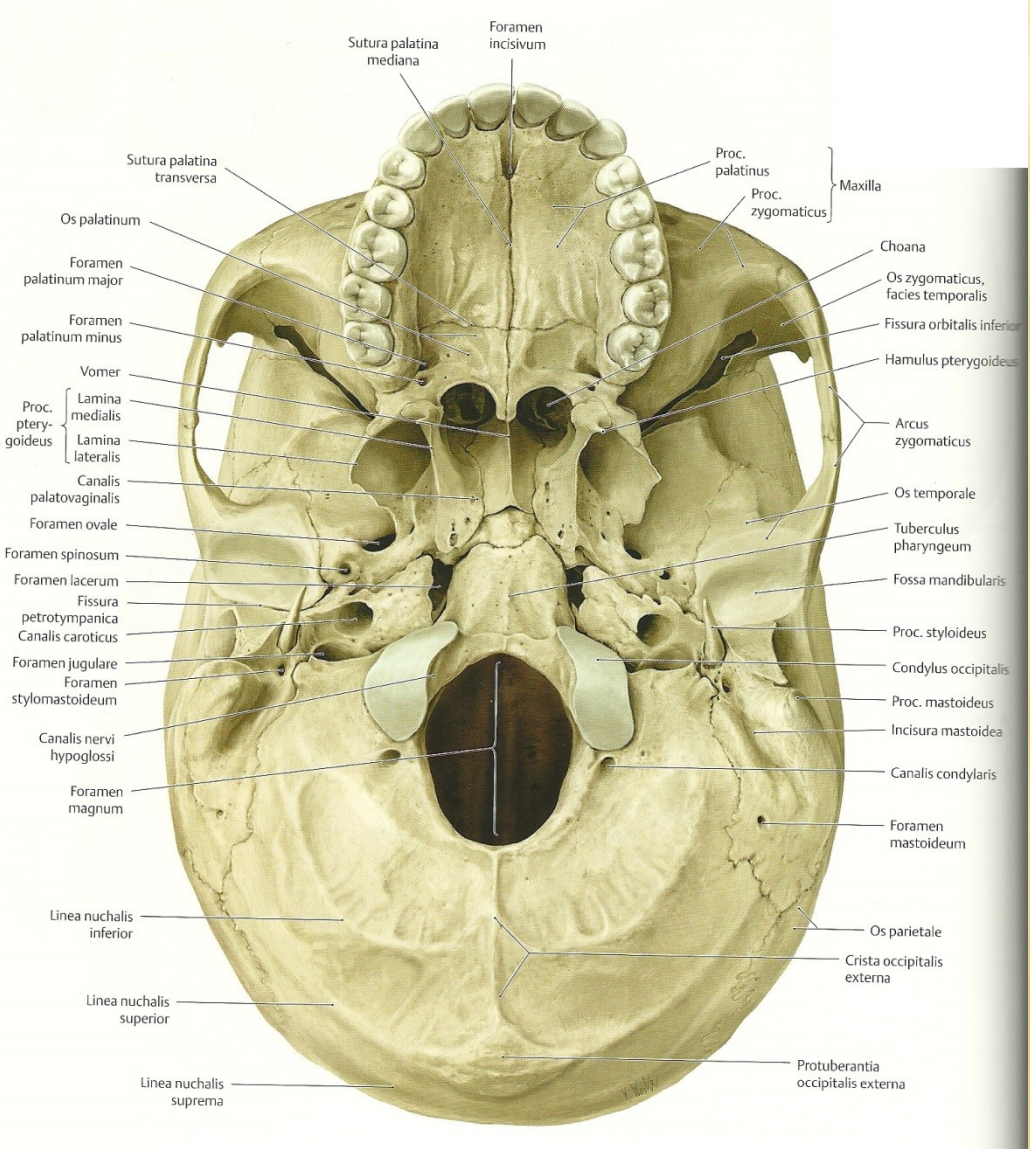
A Articulatio costotransversaria. Superior view with joints of the left rib transversely sectioned.

DENS AXIS

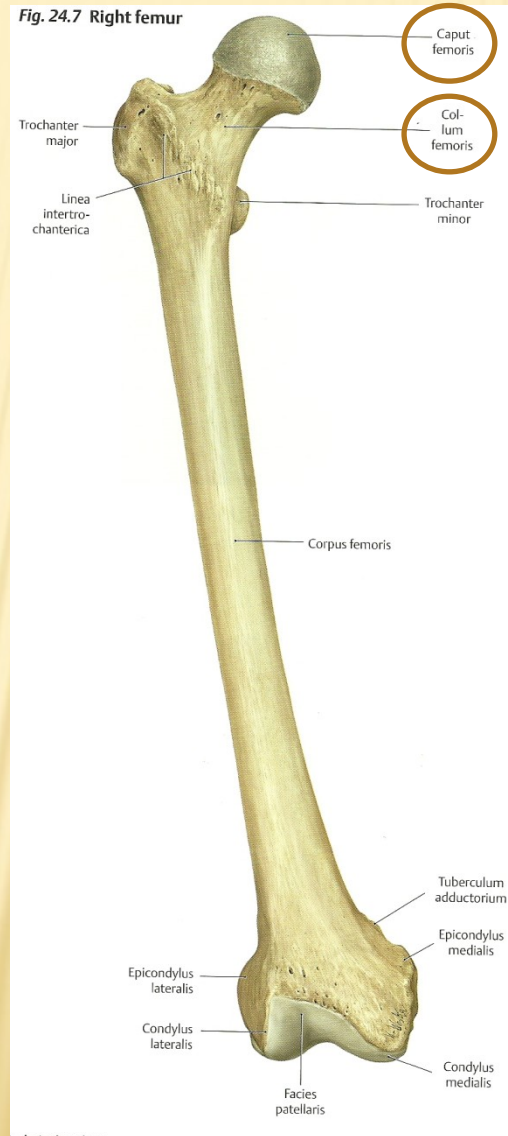


B Posterior view.

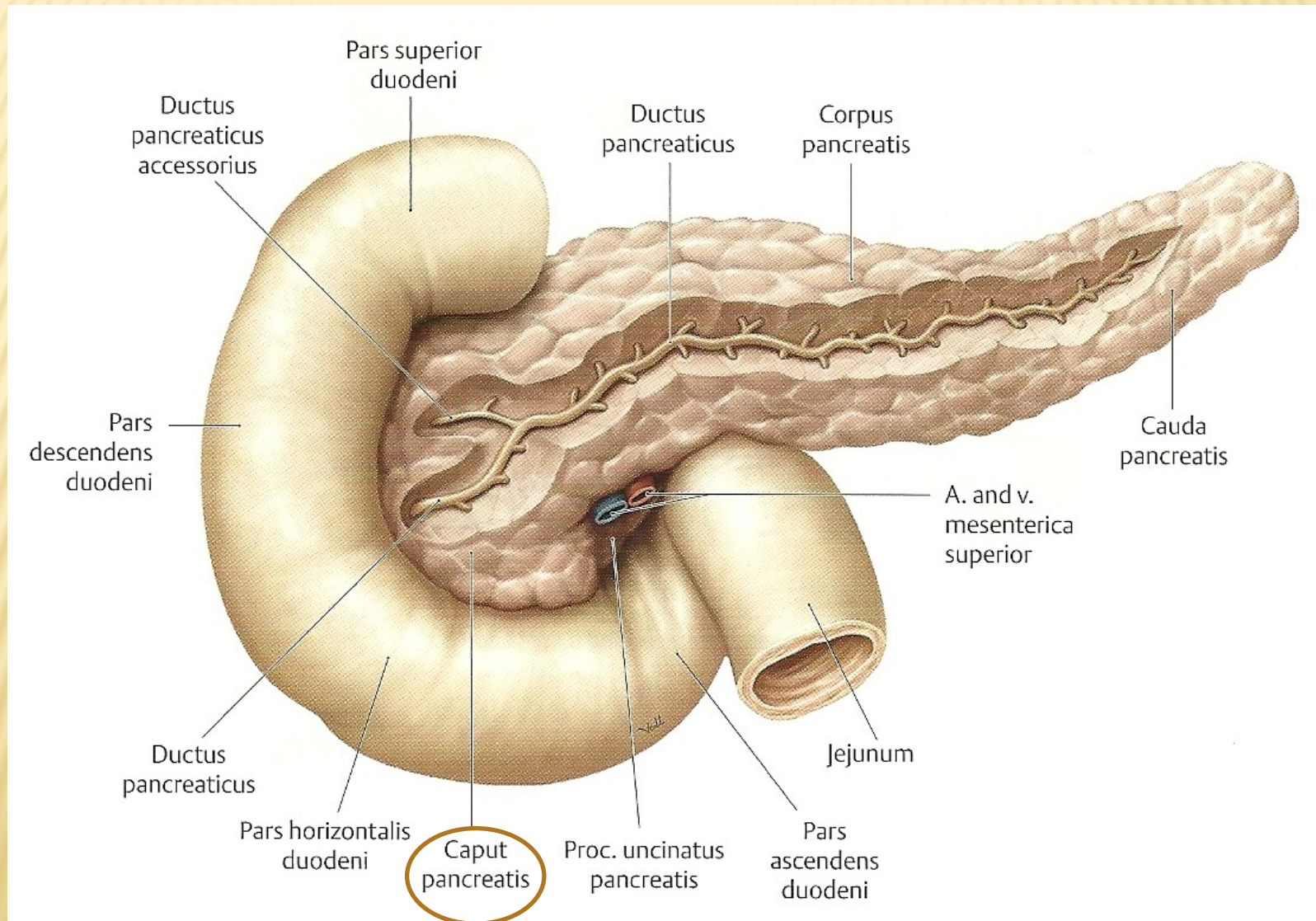
BASIS CRANII



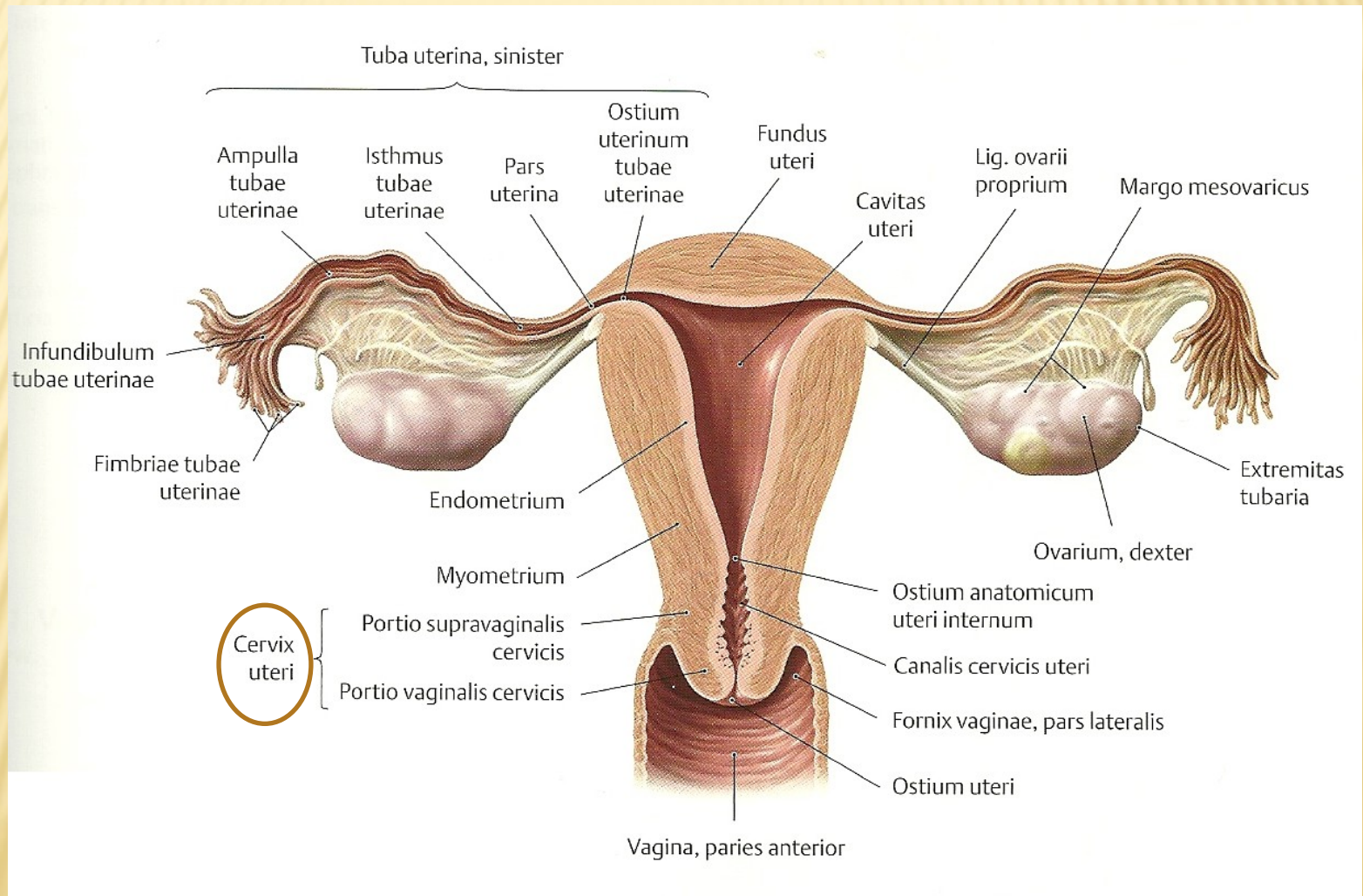
CAPUT FEMORIS, COLLUM FEMORIS



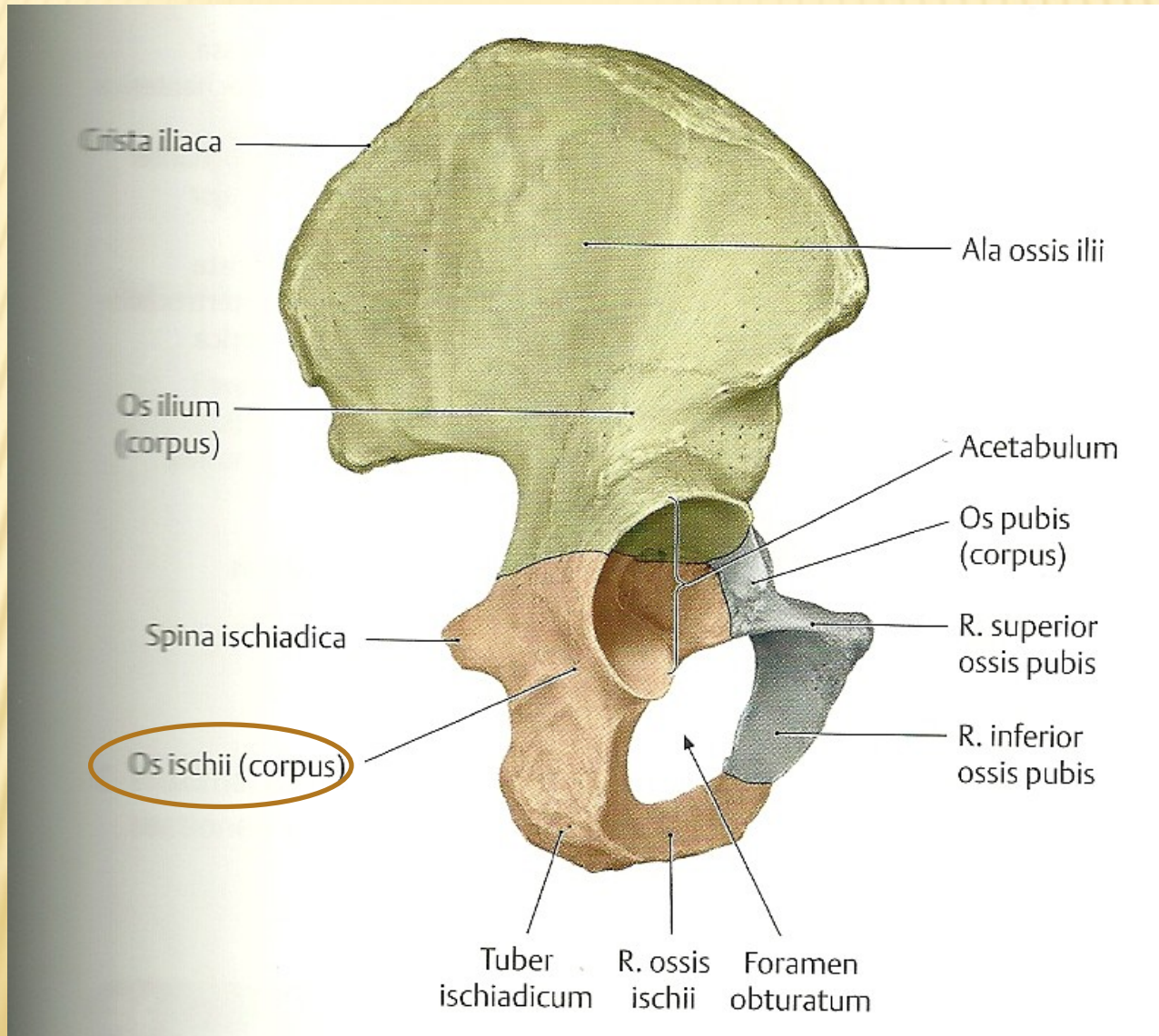
CAPUT PANCREATIS



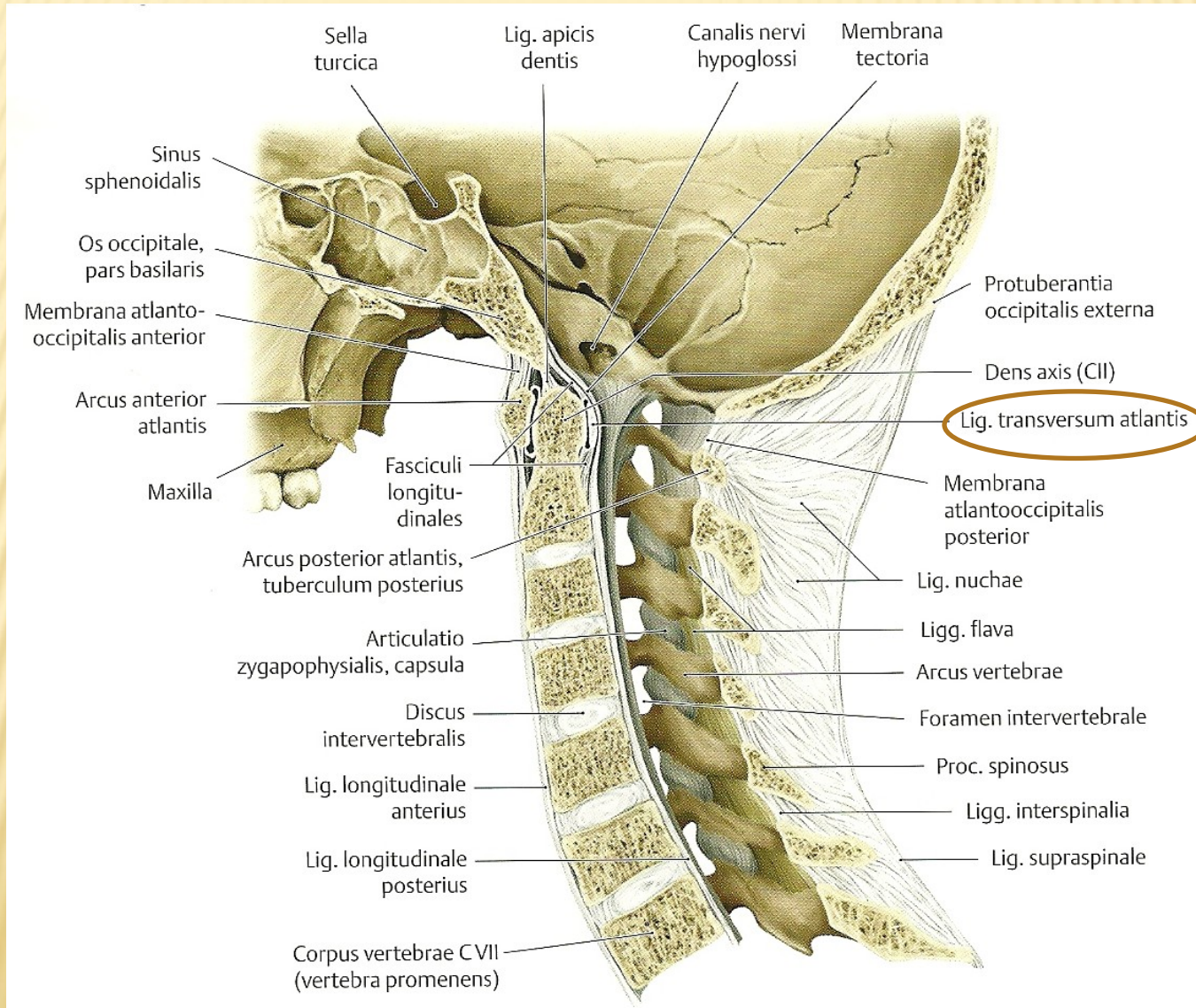
CERVIX UTERI



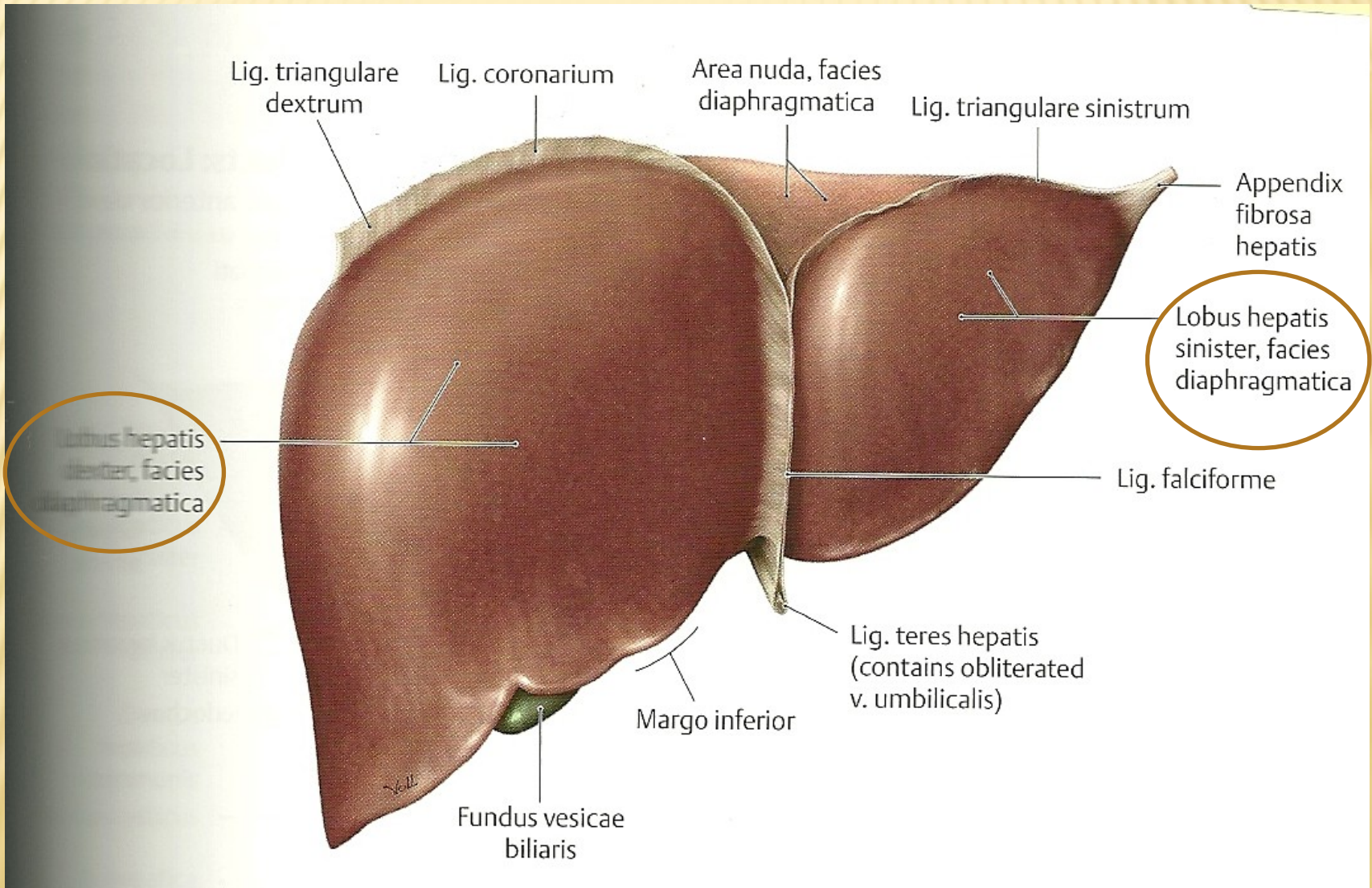
CORPUS OSSIS ISCHII



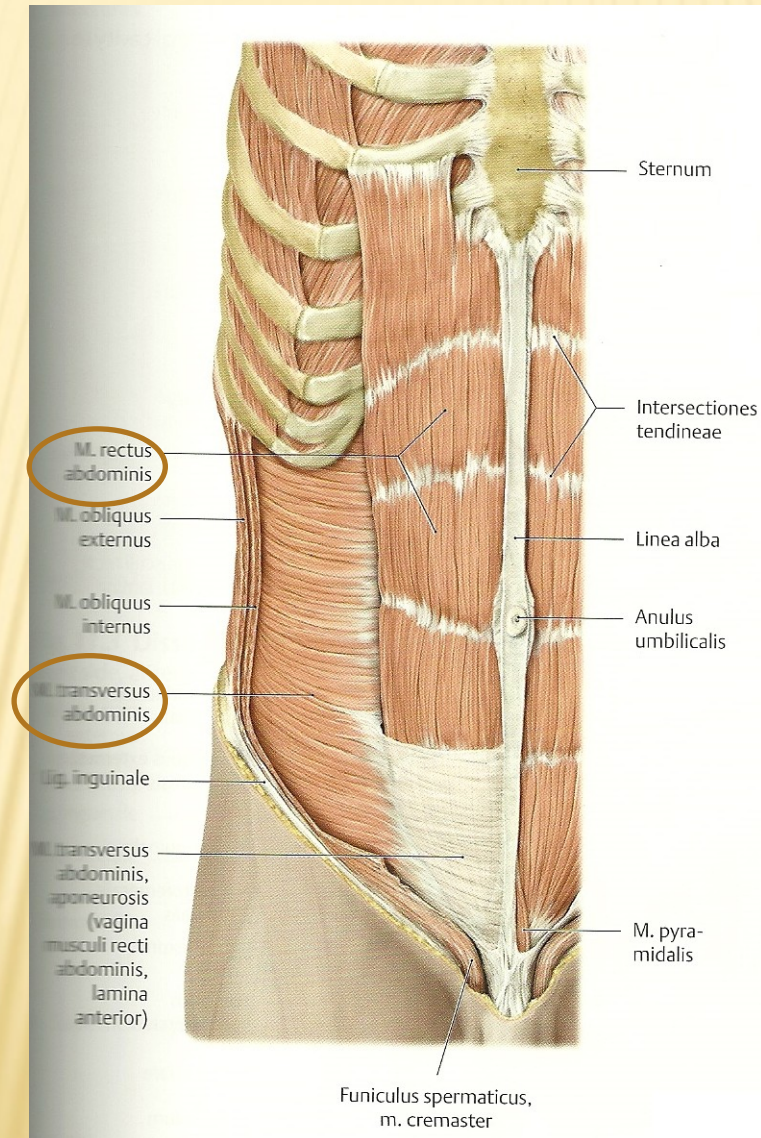
LIGAMENTUM TRANSVERSUM ATLANTIS



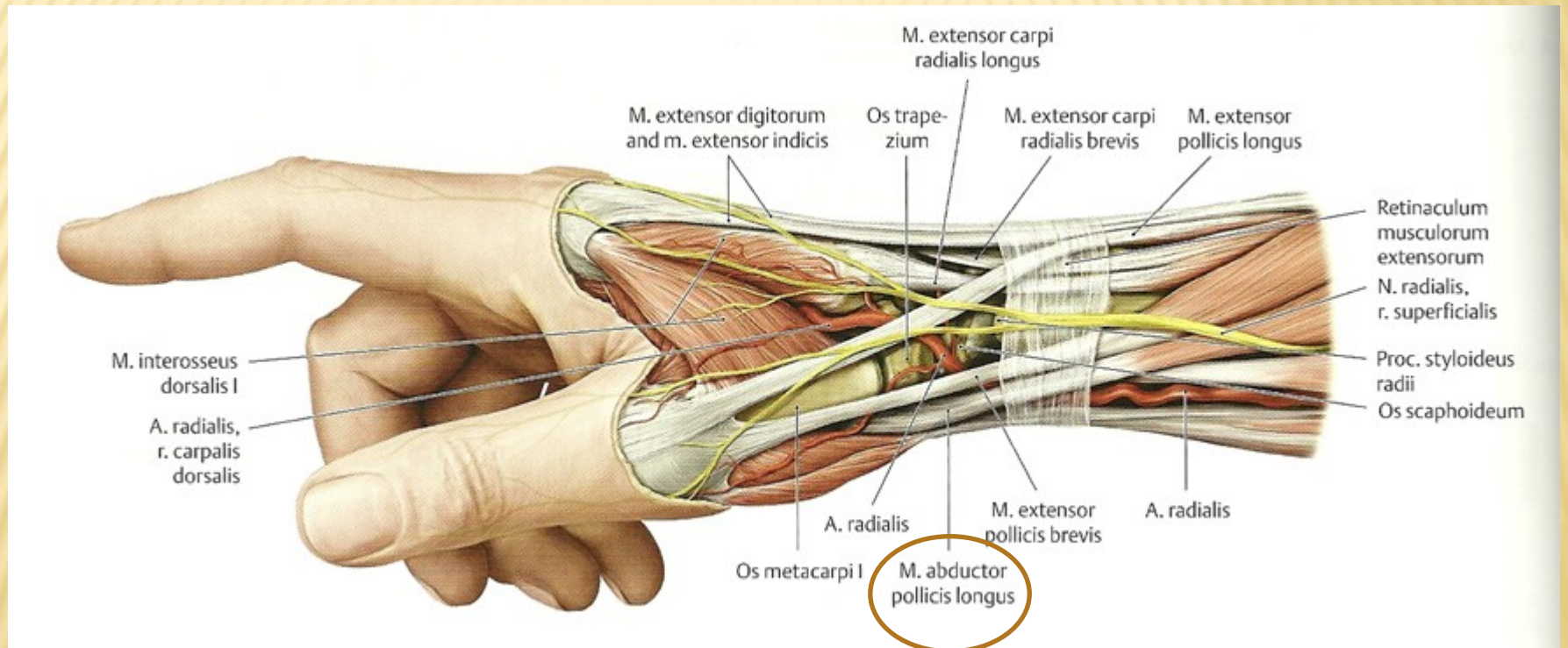
LOBUS HEPATIS DEXTER, SINISTER



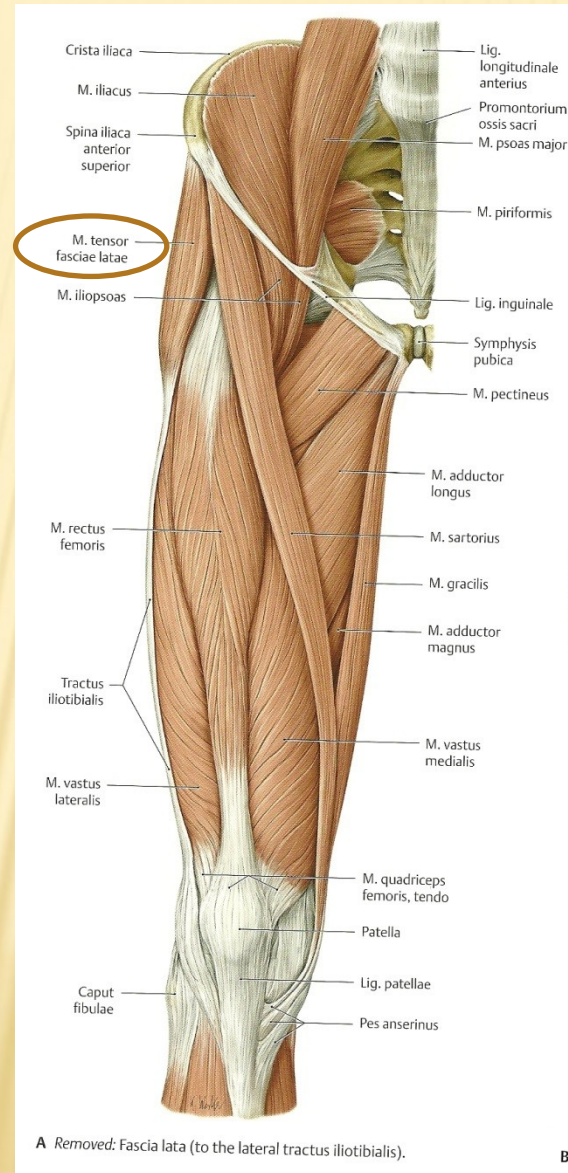
MUSCULUS RECTUS, TRANSVERSUS ABDOMINIS



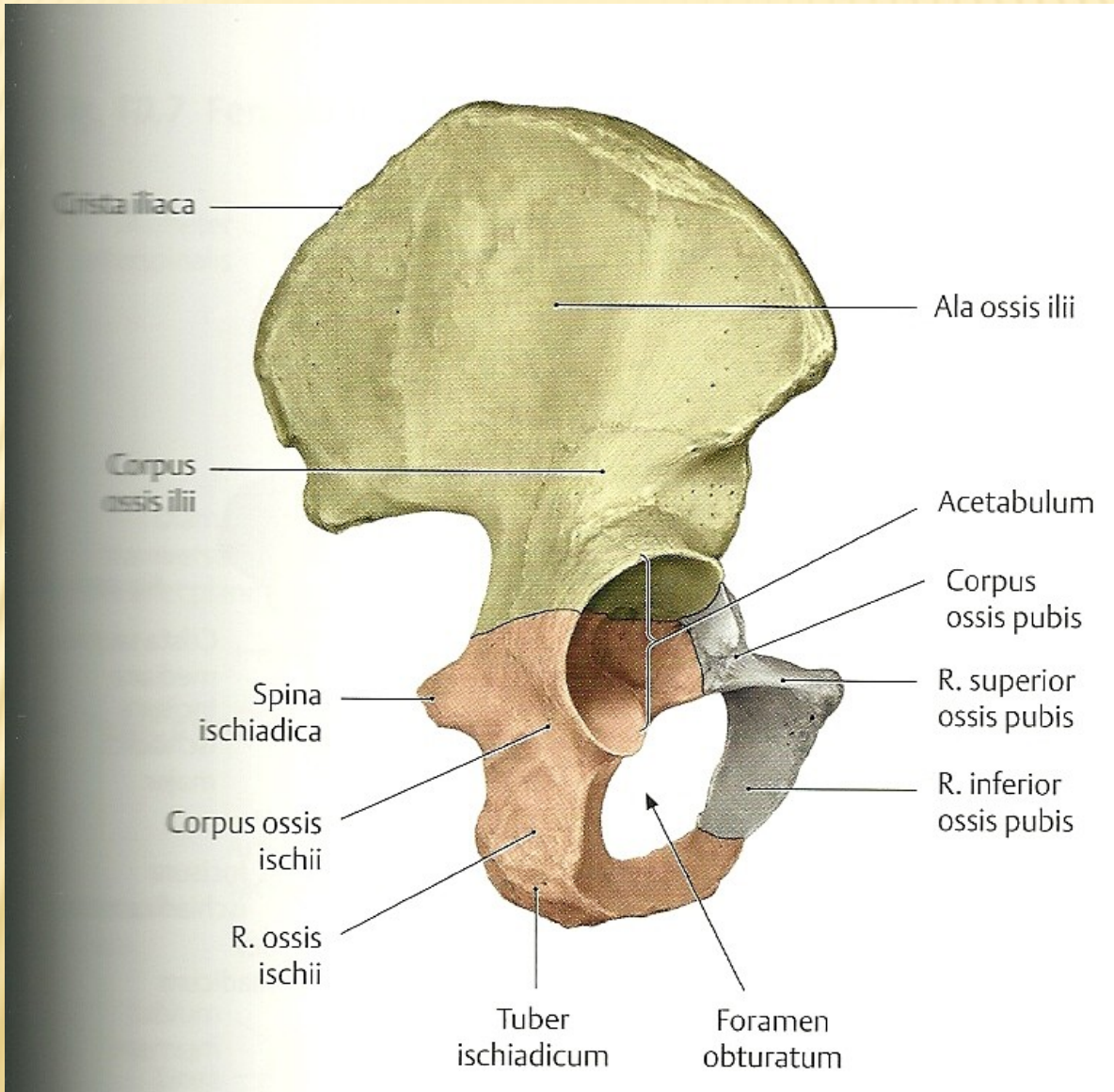
MUSCULUS ABDUCTOR POLLICIS LONGUS



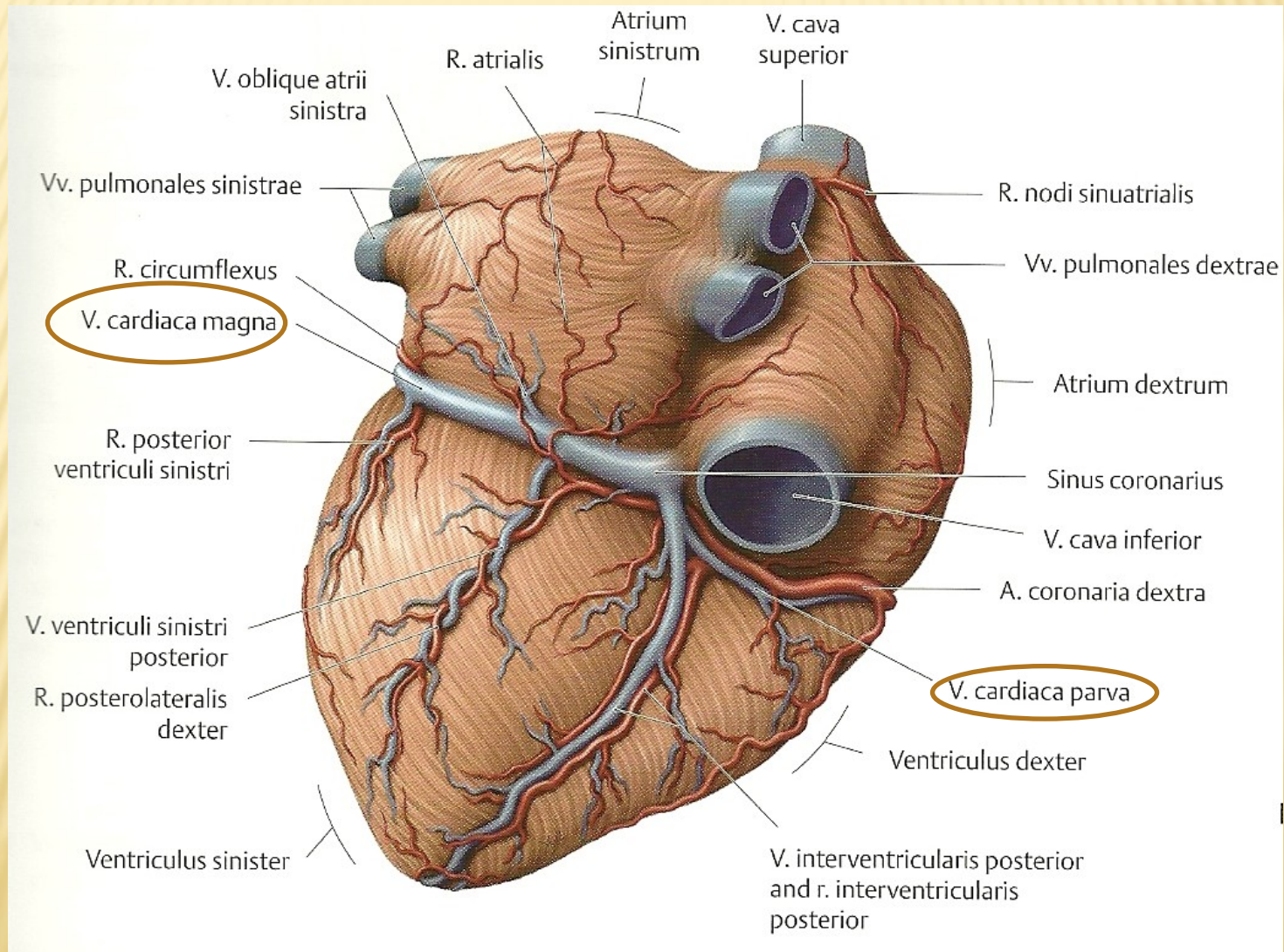
MUSCULUS TENSOR FASCIAE LATAE



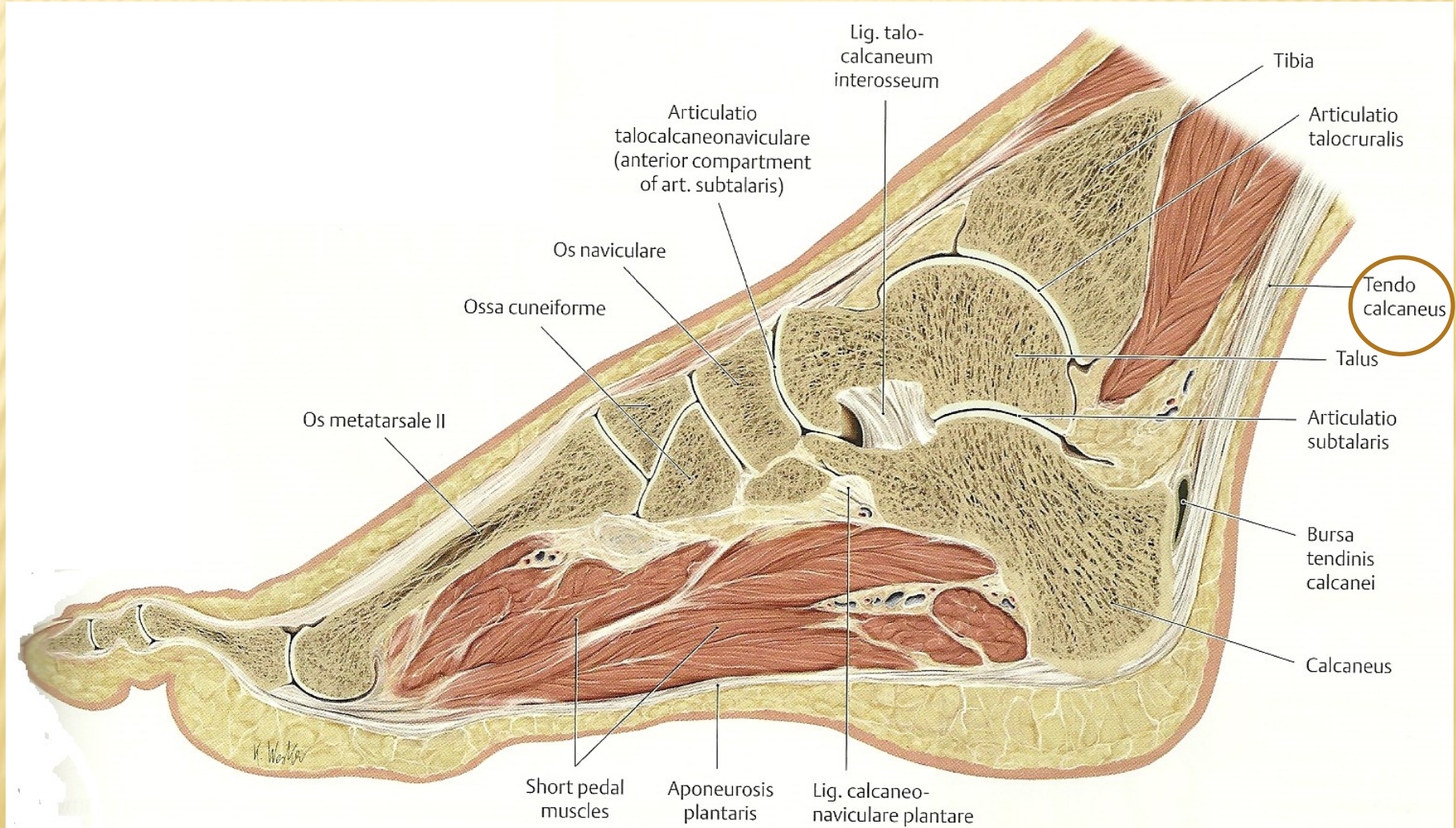
OS ILIUM, OS ISCHII, OS PUBIS



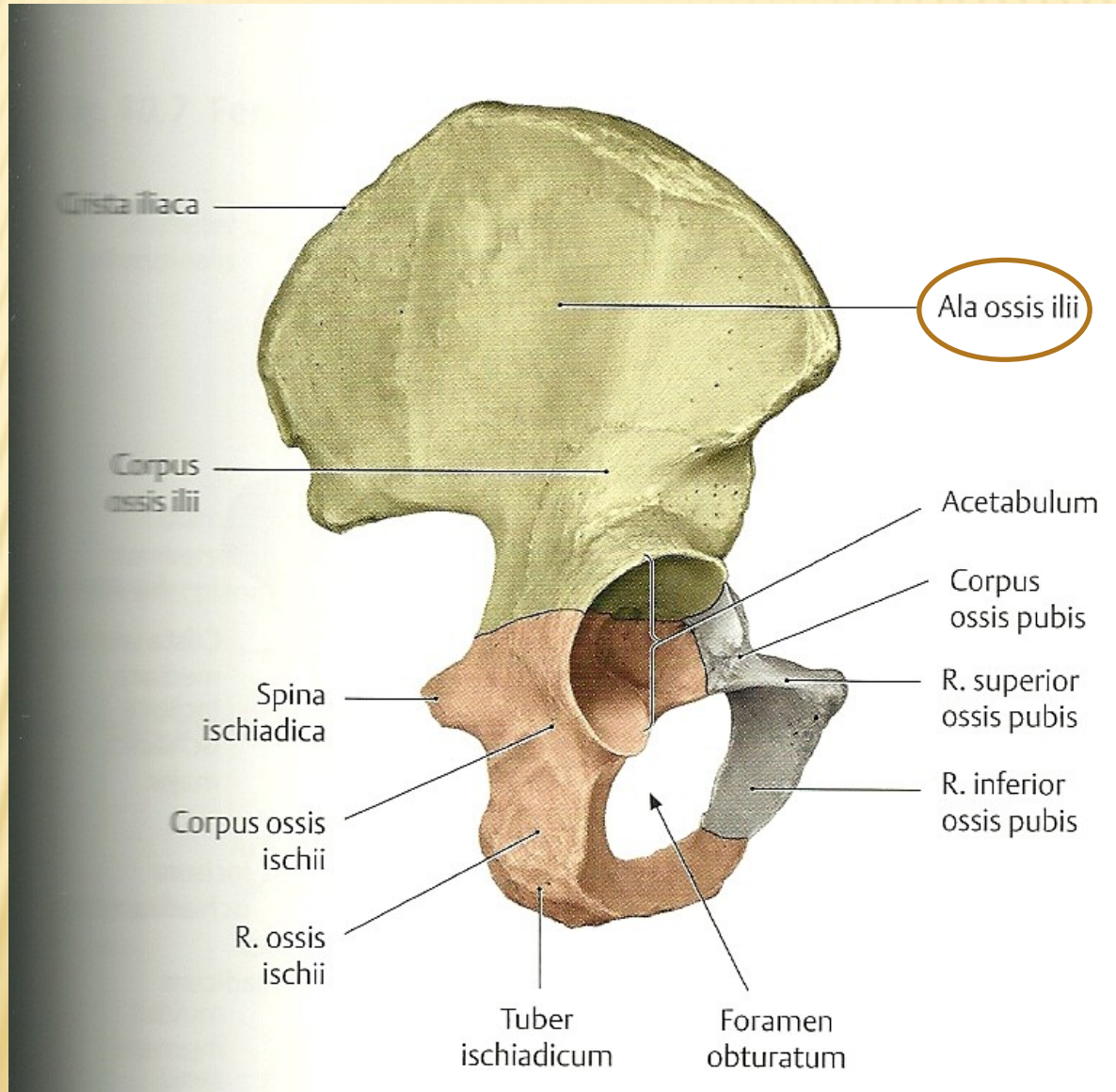
VENA CORDIS MAGNA, PARVA



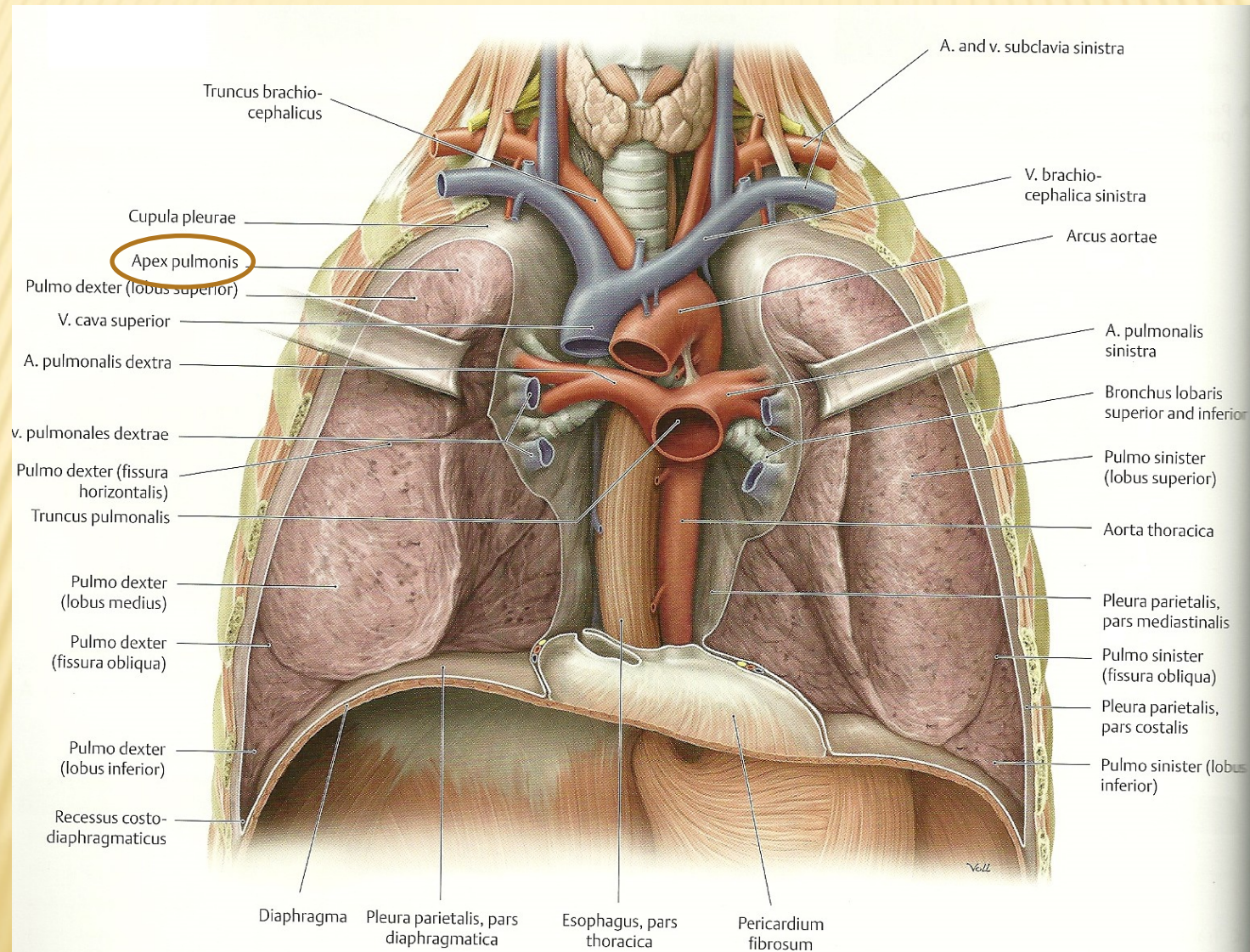
TENDO CALCANEUS



ALA OSSIS ILII

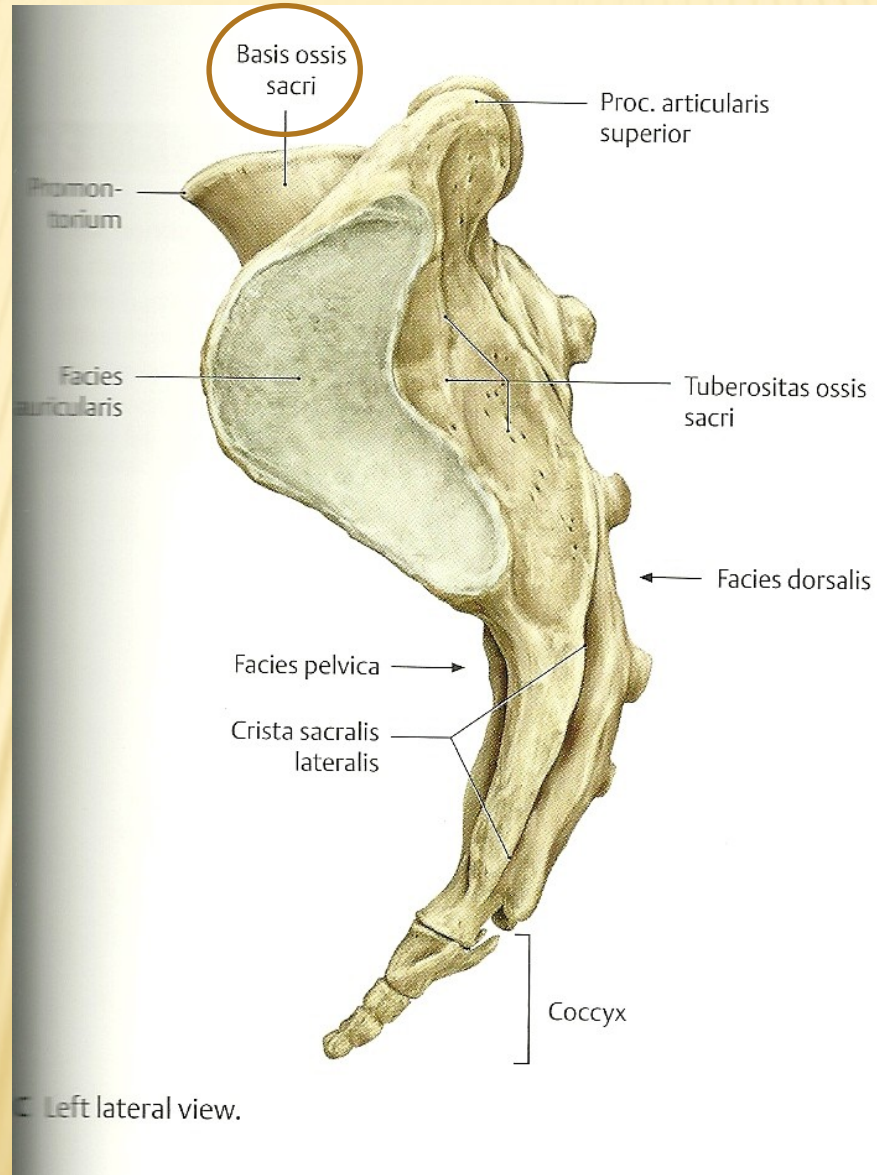


APEX PULMONIS

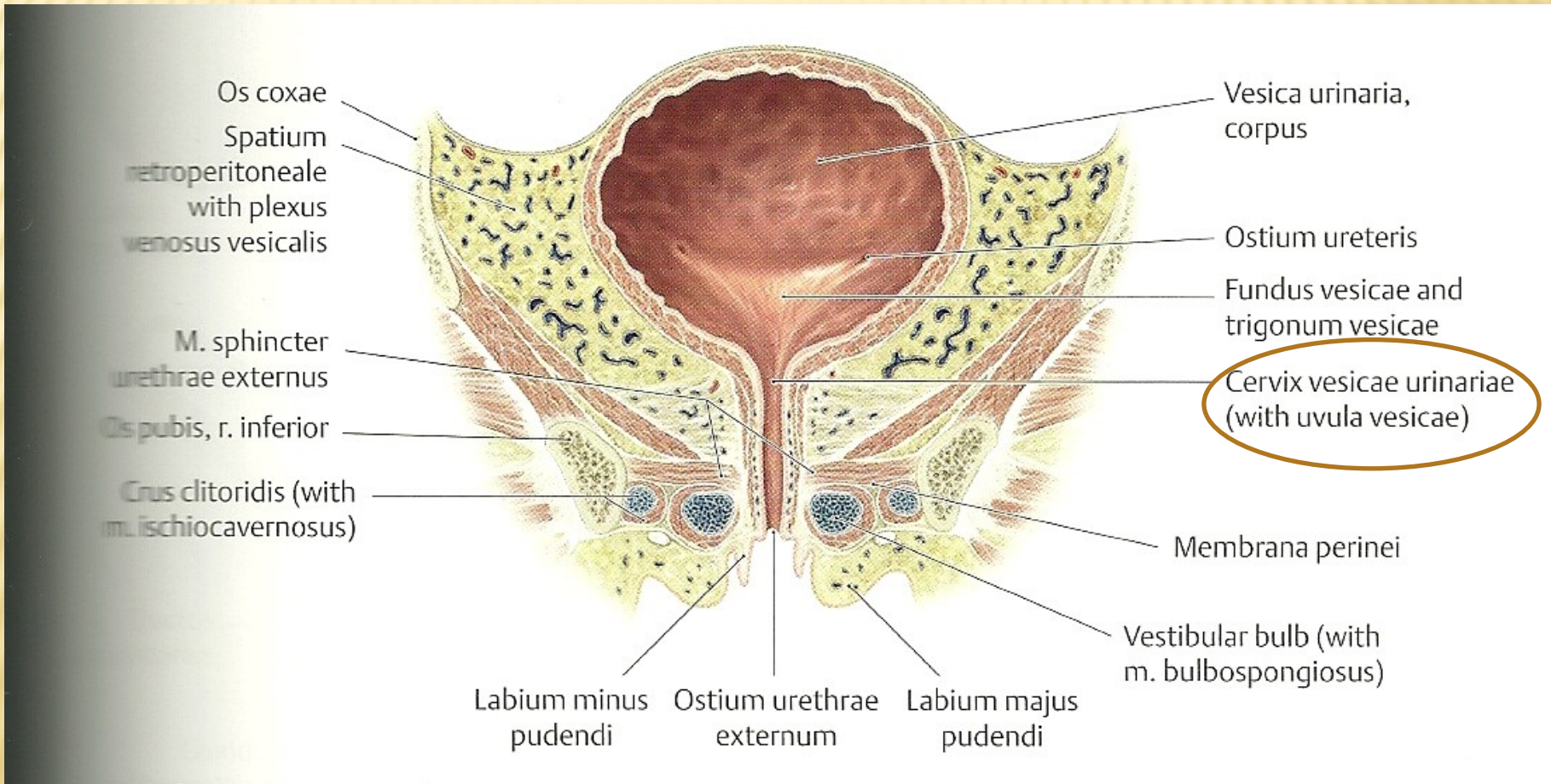


B Anterior view with lungs retracted.

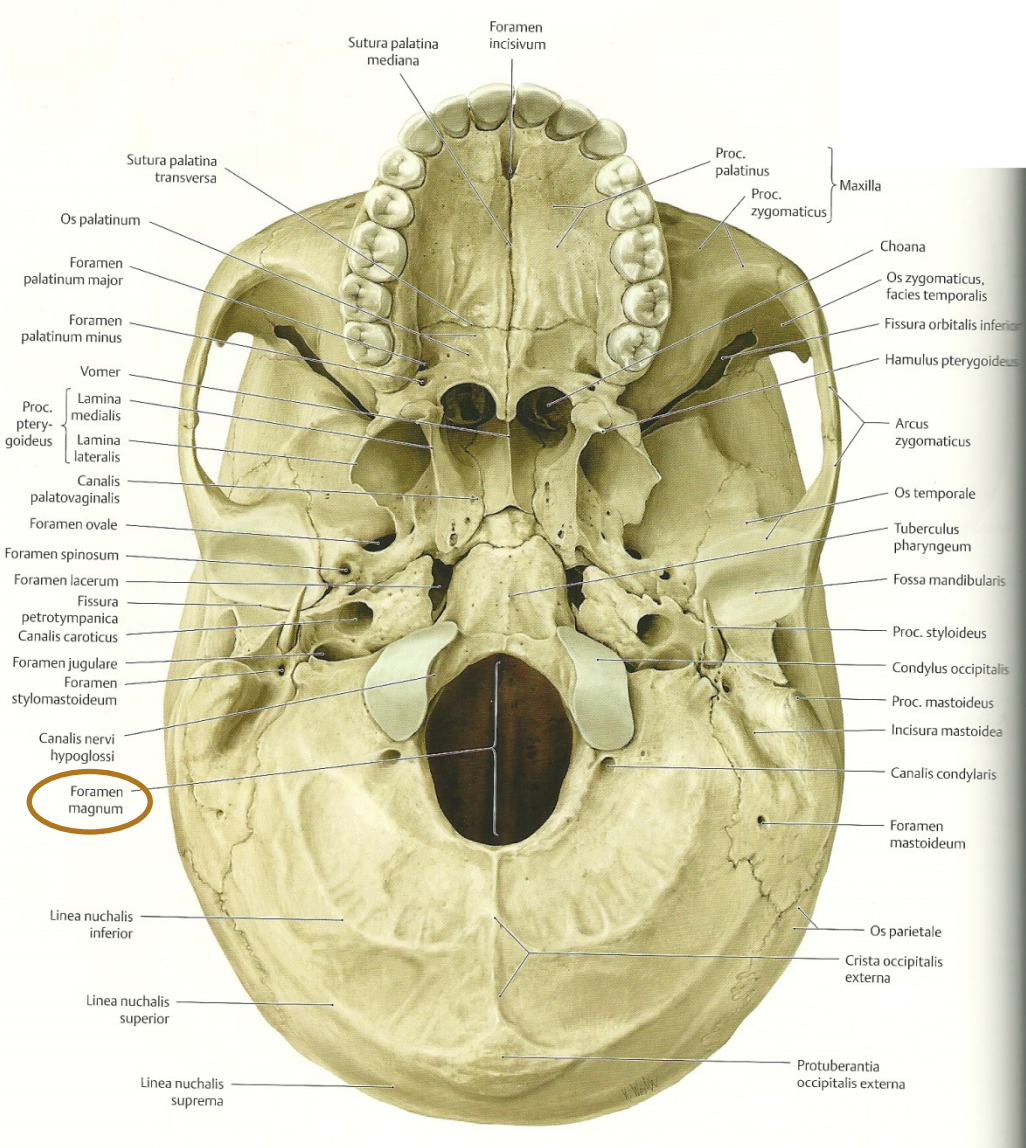
BASIS OSSIS SACRI



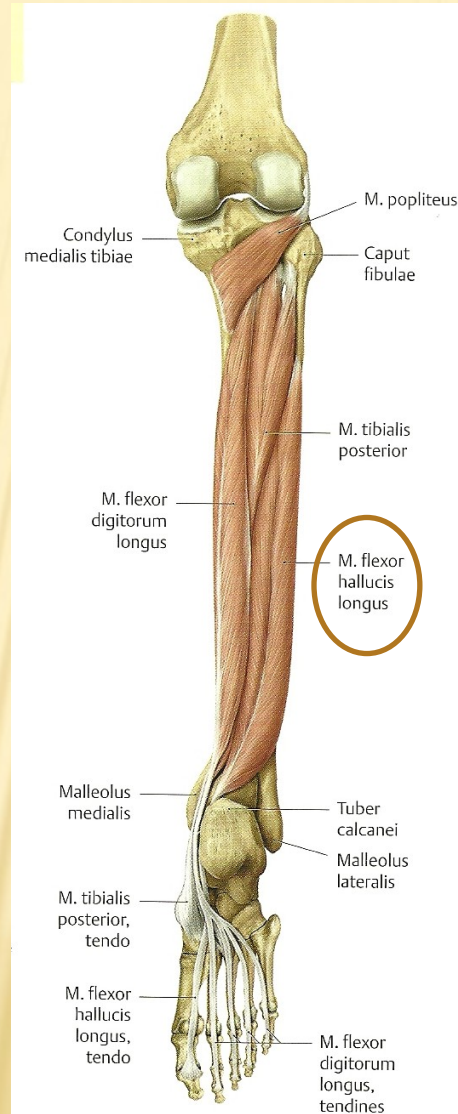
CERVIX VESICAE URINARIAE



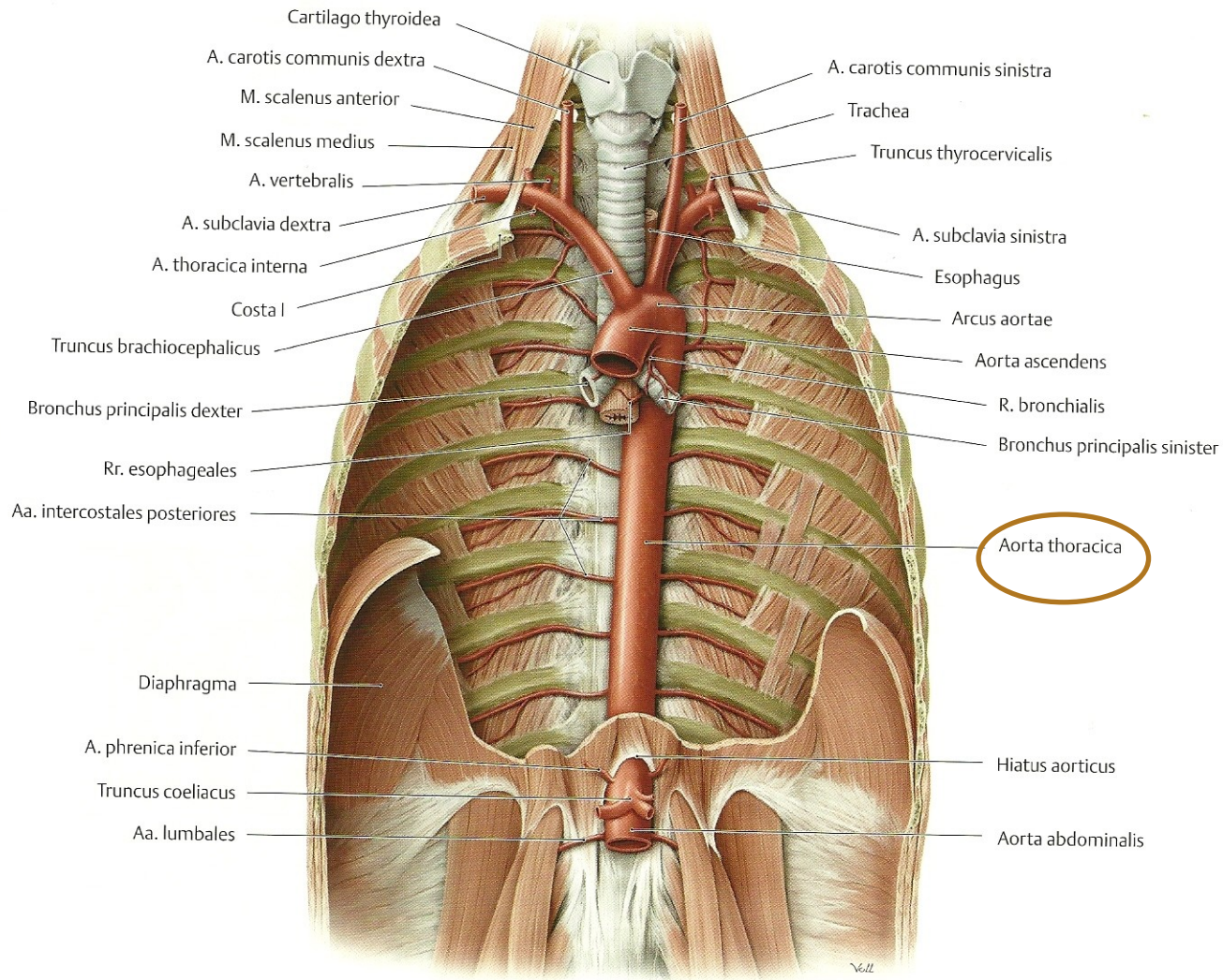
FORAMEN MAGNUM



MUSCULUS FLEXOR HALLUCIS LONGUS



PARS THORACICA AORTAE



B Aorta thoracica in situ, anterior view. *Removed:* Heart, lungs, portions of diaphragma.