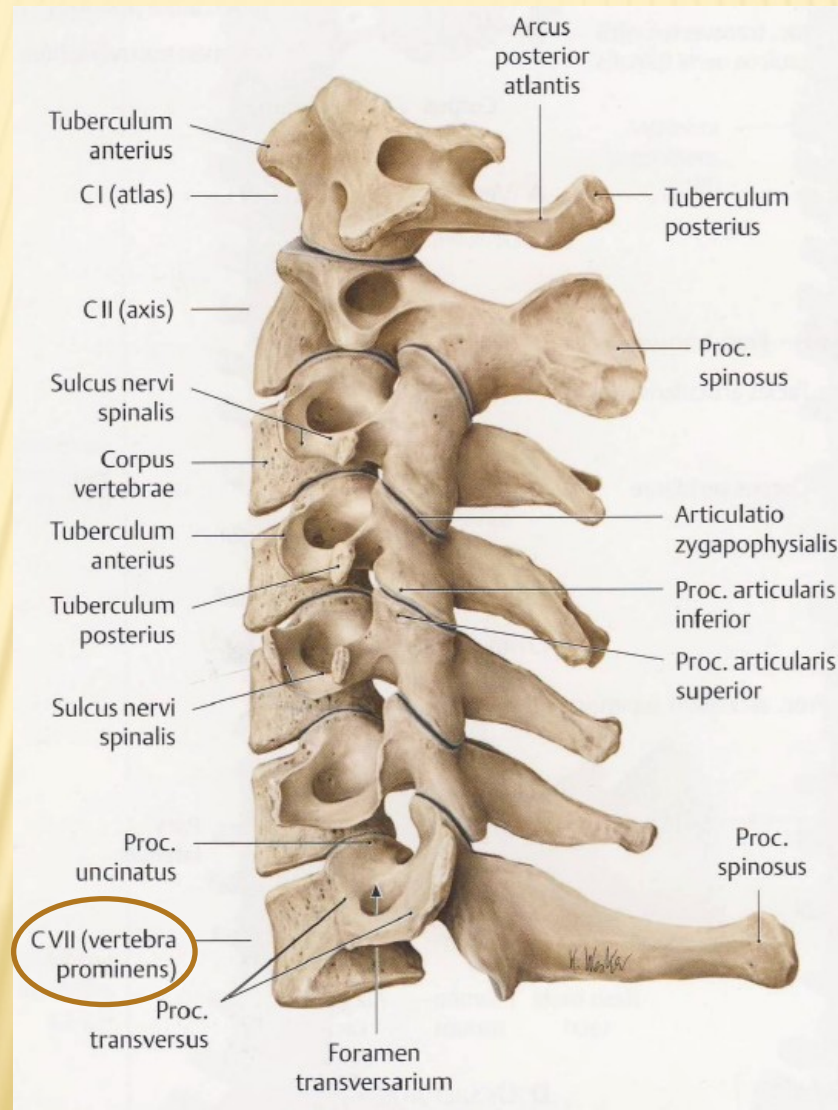
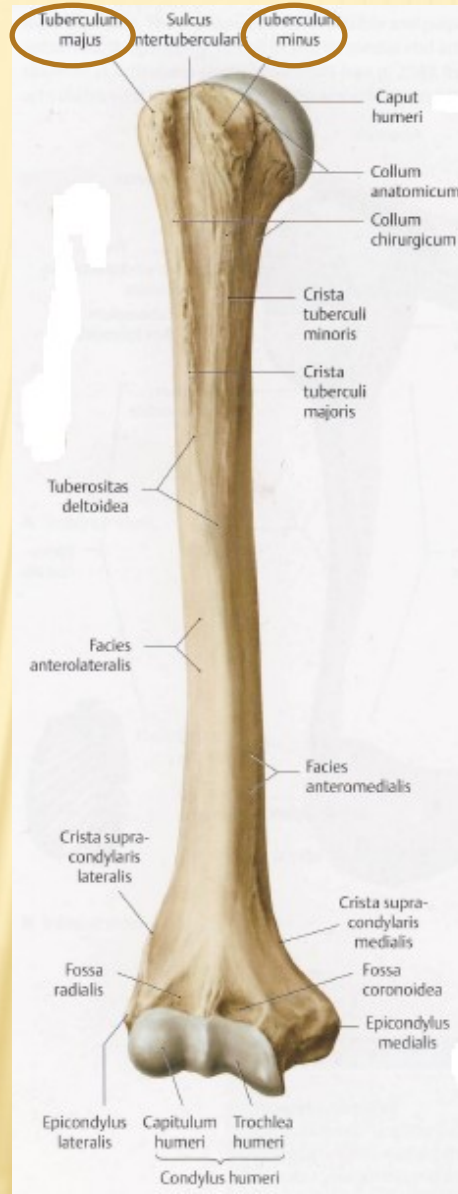


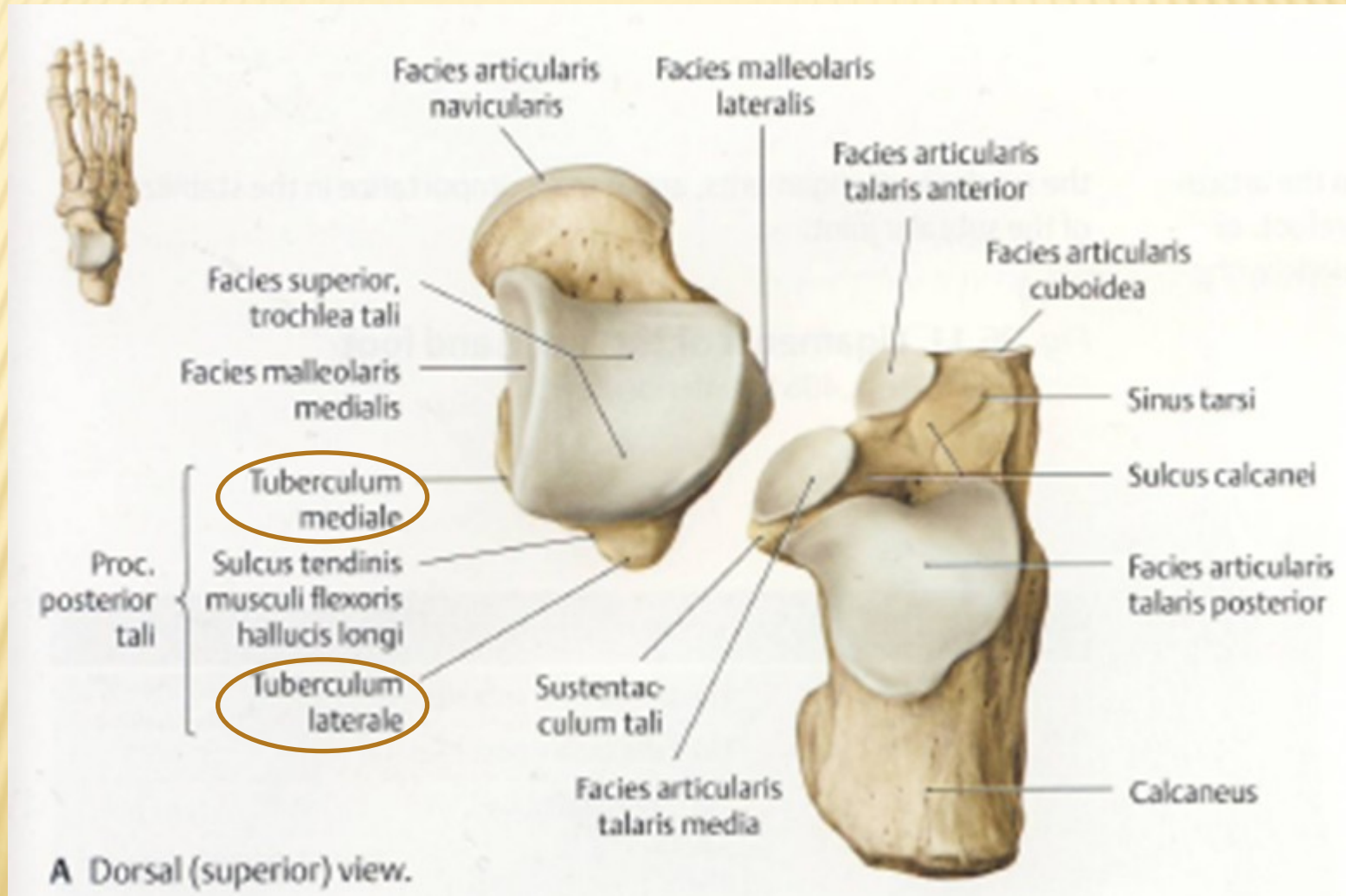
VERTEBRA PROMINENS



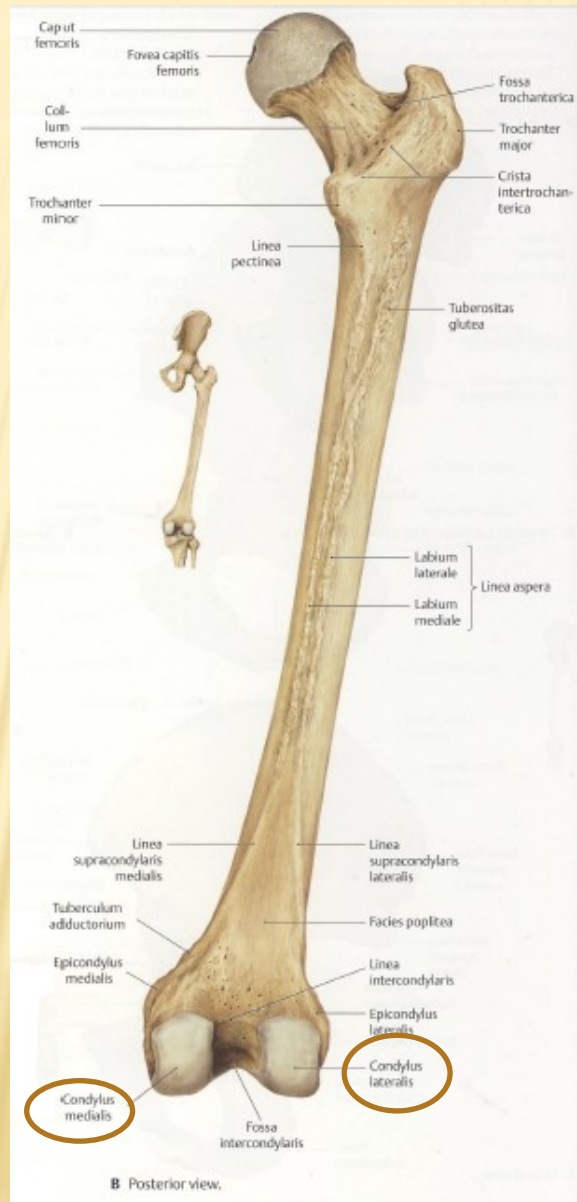
TUBERCULUM MAJUS, MINUS



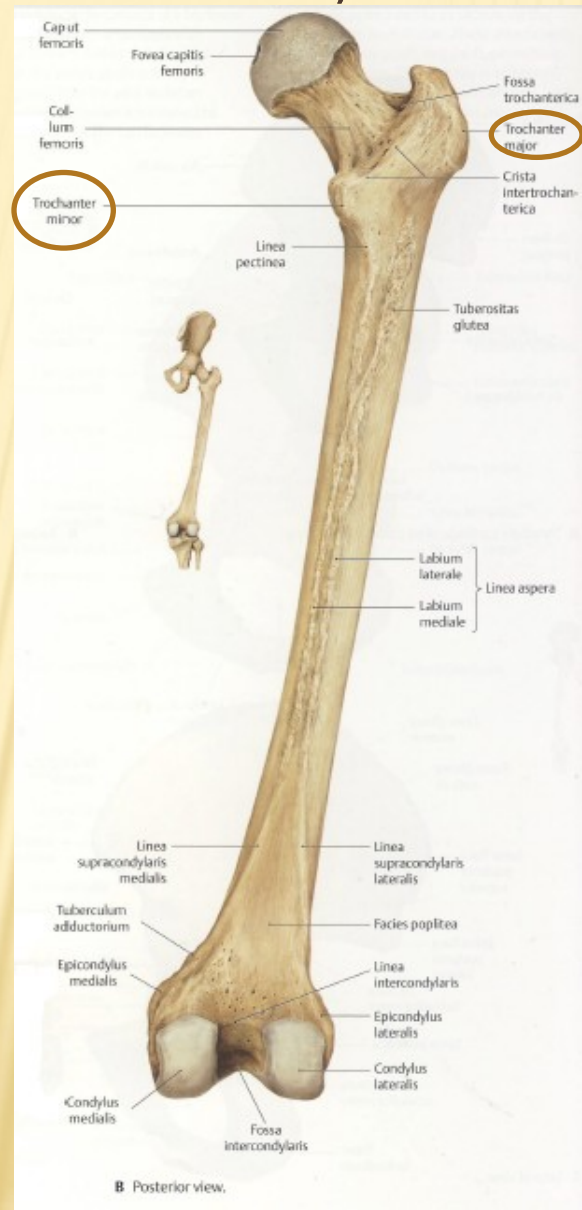
TUBERCULUM LATERALE, MEDIALE



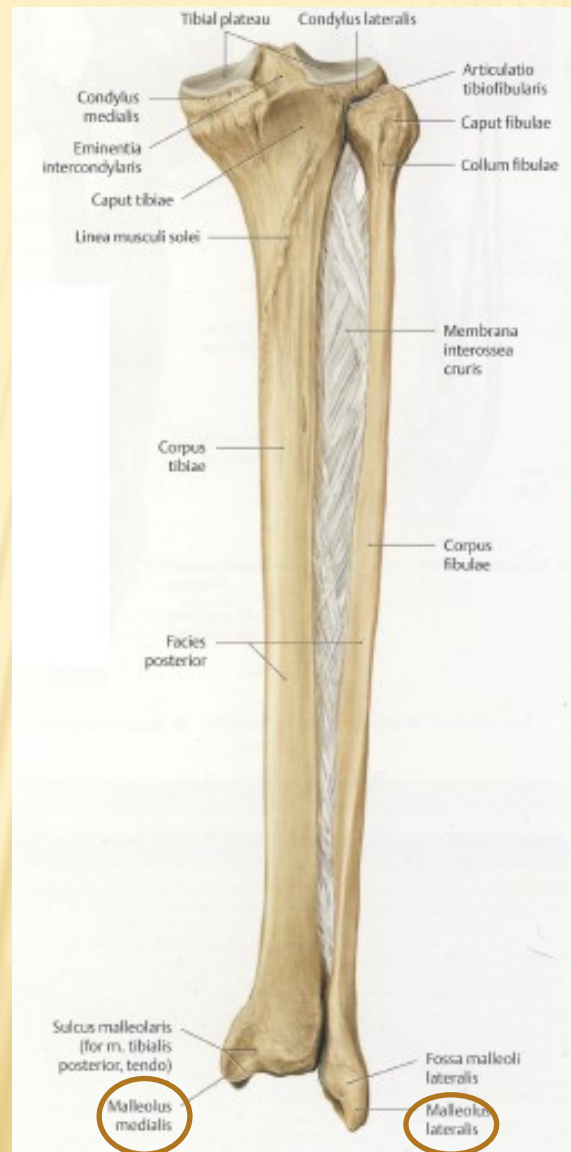
CONDYLUS LATERALIS ET MEDIALIS FEMORIS



TROCHANTER MAJOR, MINOR

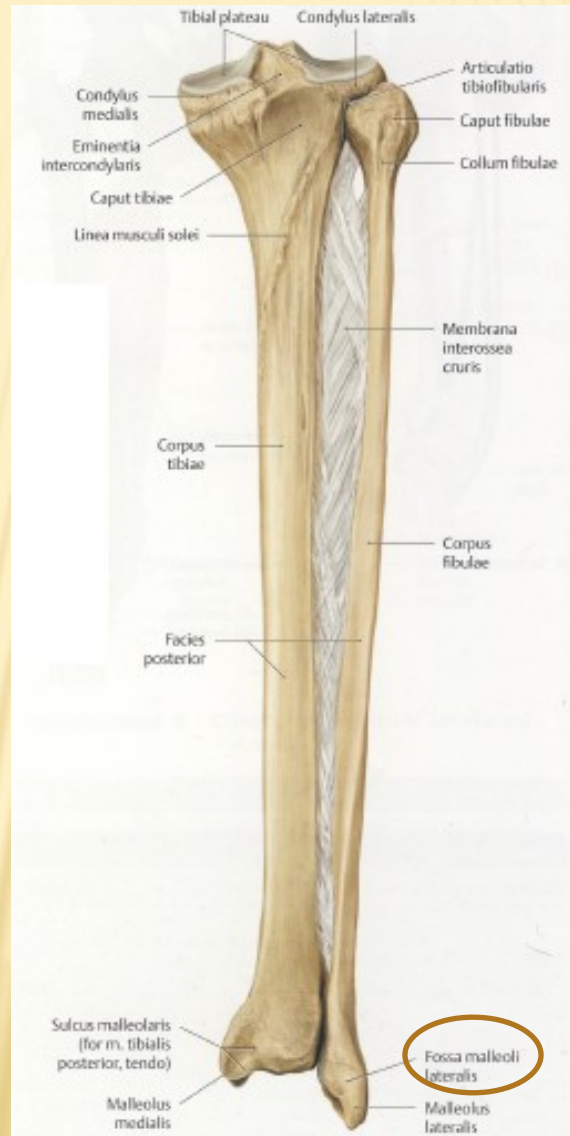


MALLEOLUS LATERALIS ET MEDIALIS



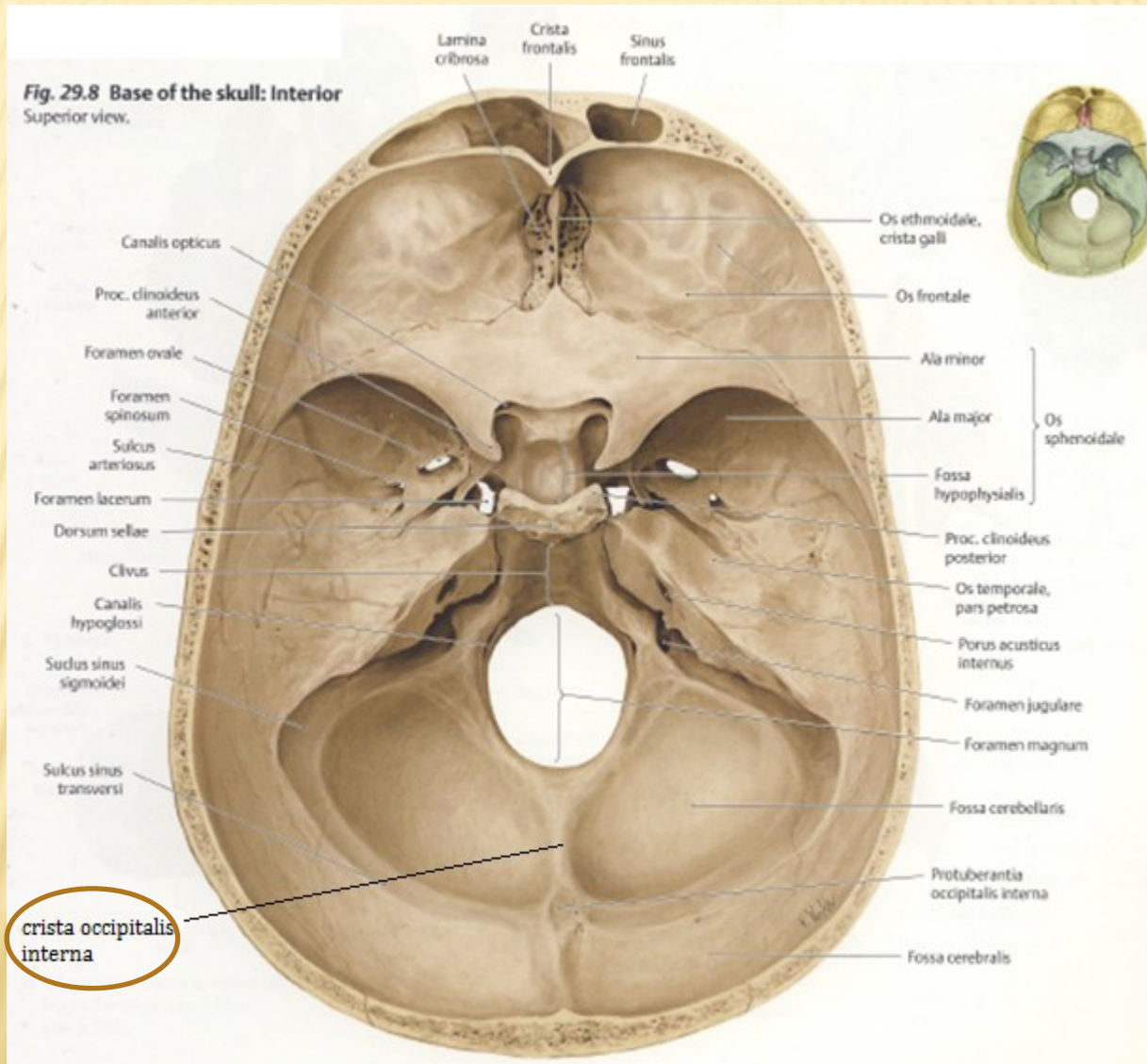
B Posterior view.

FOSSA MALLEOLI LATERALIS

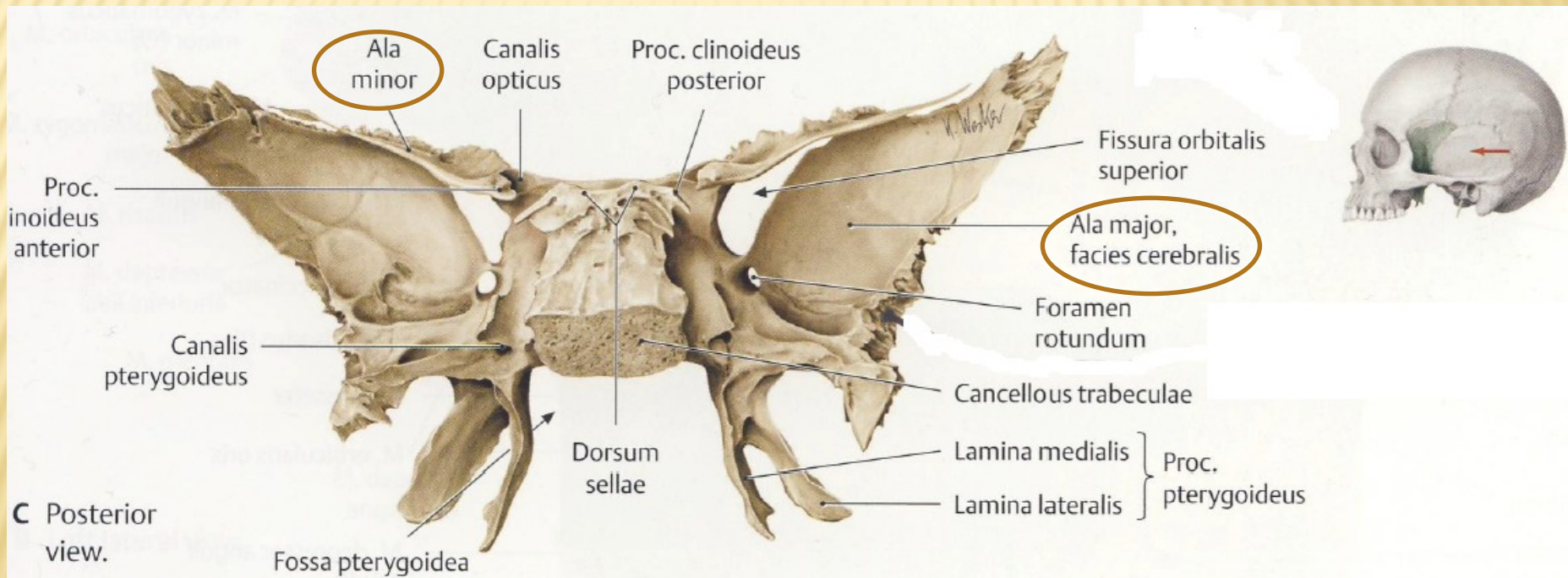


B Posterior view.

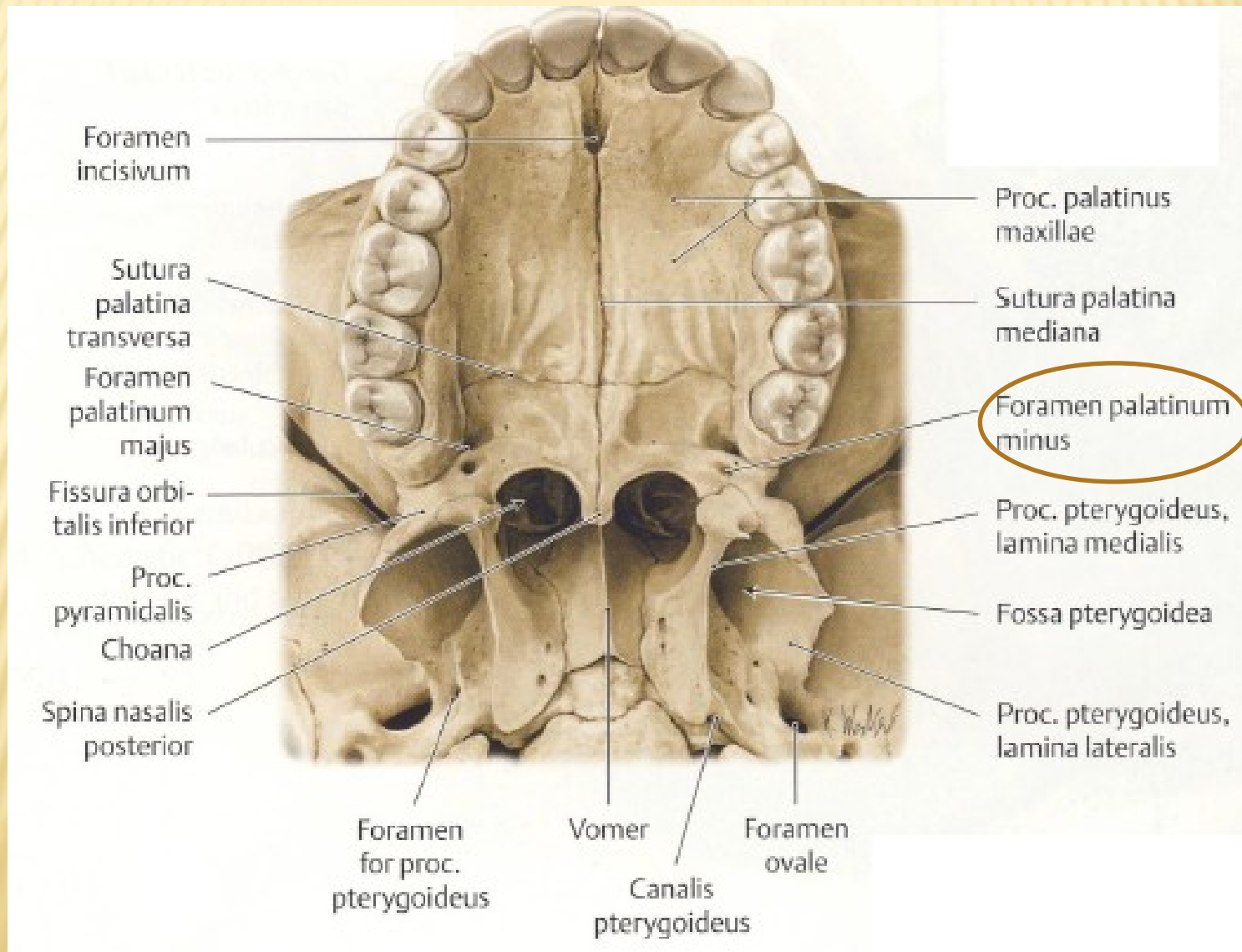
CRISTA OCCIPITALIS INTERNA



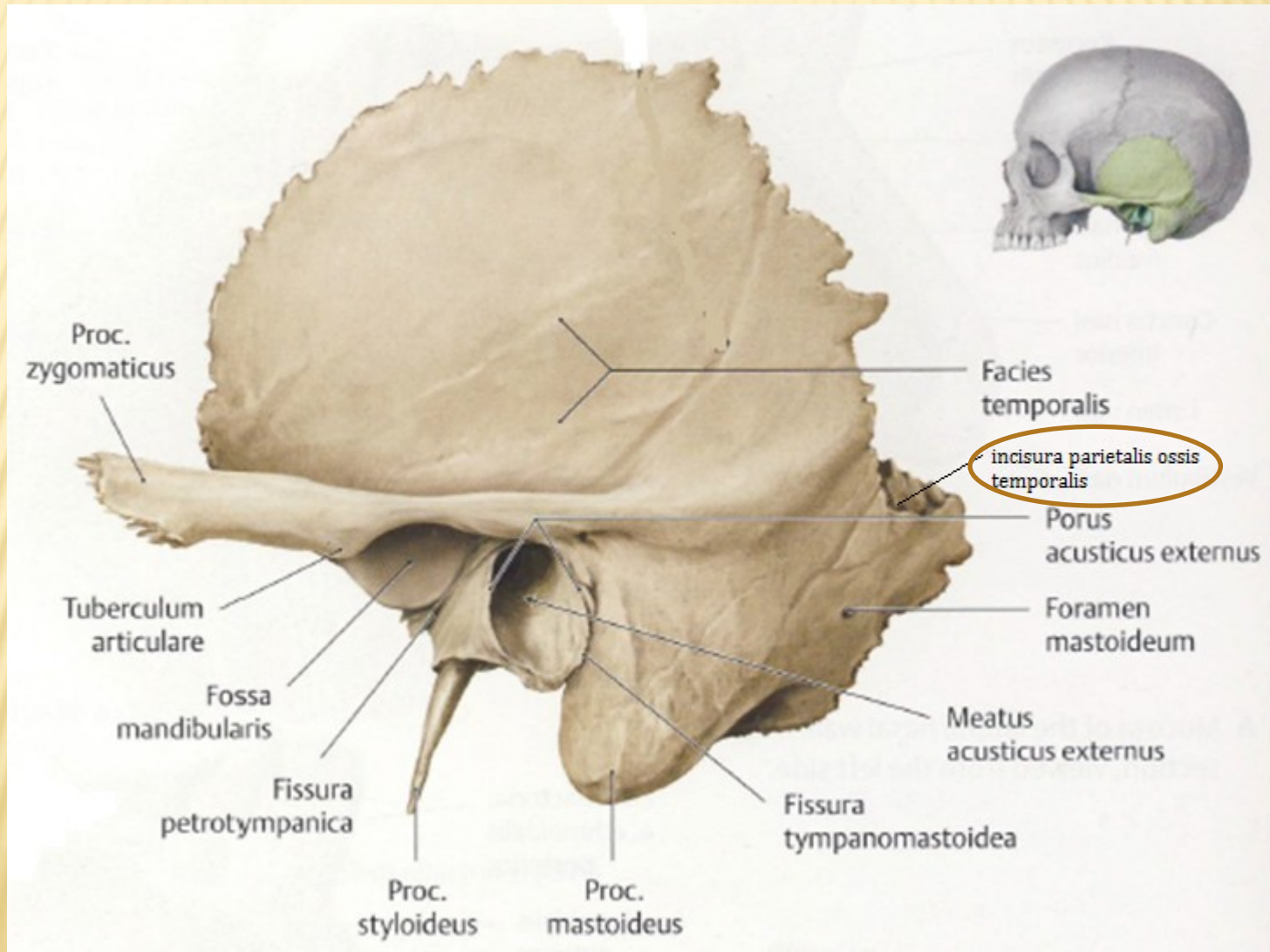
ALA MAJOR ET MINOR OSSIS SPHENOIDALIS



FORAMINA PALATINA MINORA



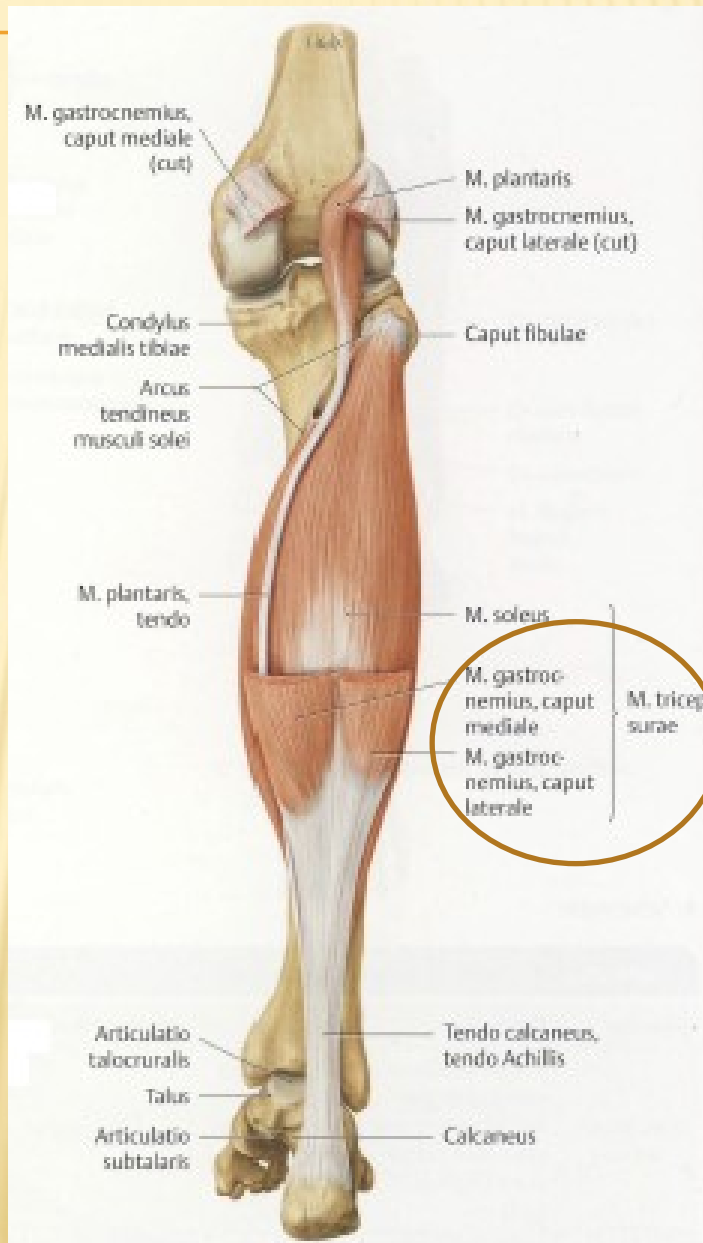
INCISURA PARIETALIS OSSIS TEMPORALIS



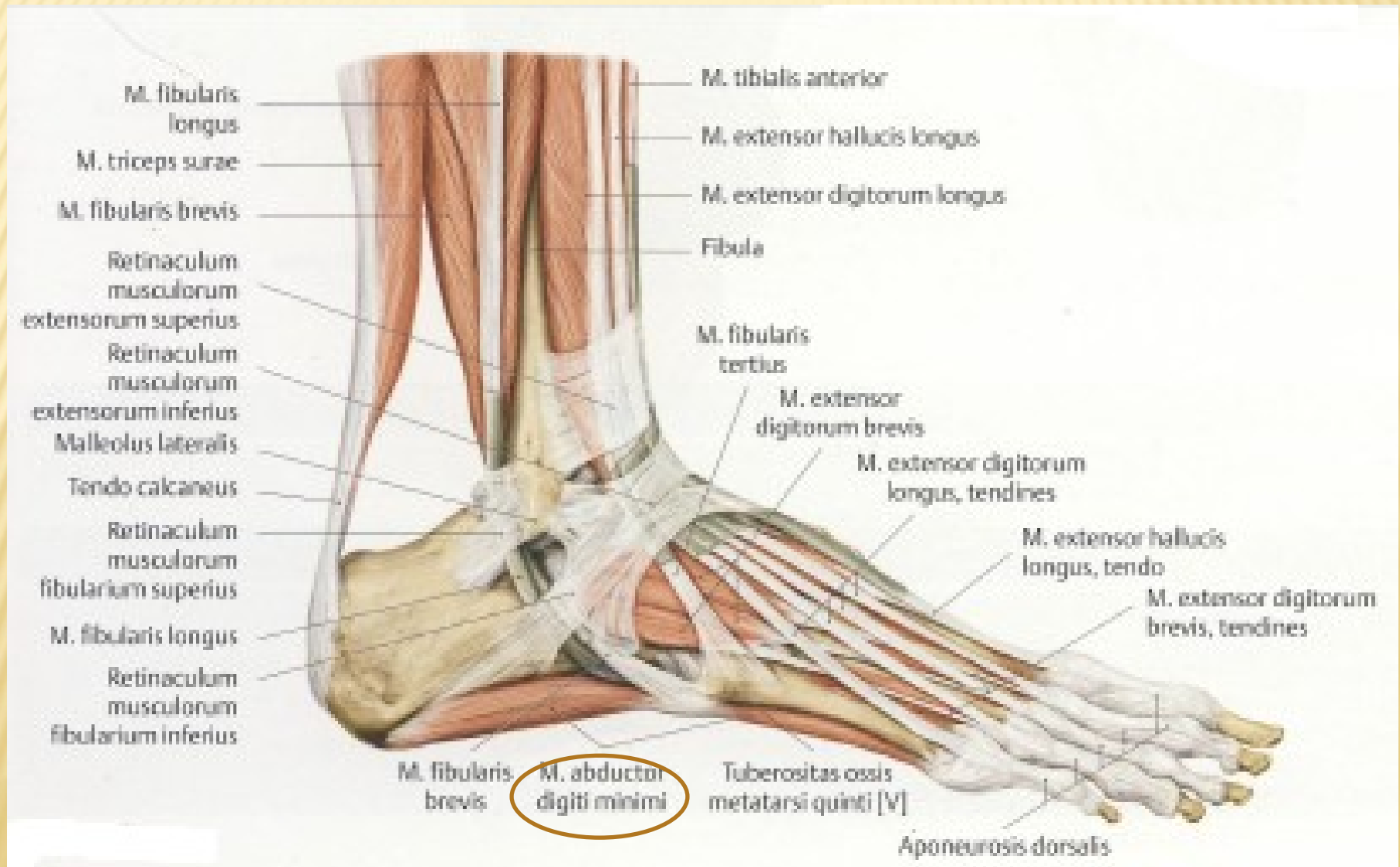
MUSCULUS BICEPS FEMORIS



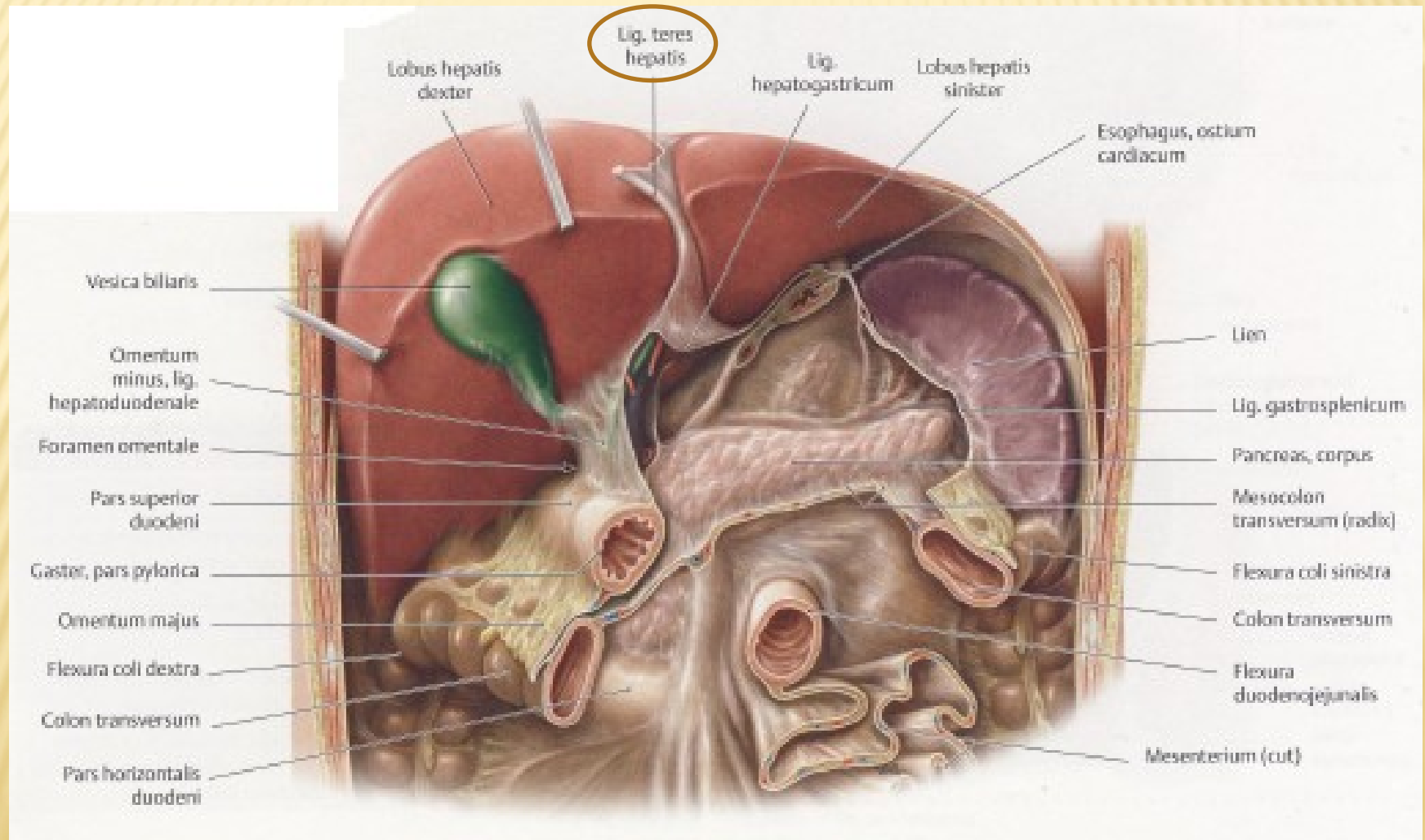
CAPUT LATERALE ET MEDIALE MUSCULI TRICIPITIS SURAE



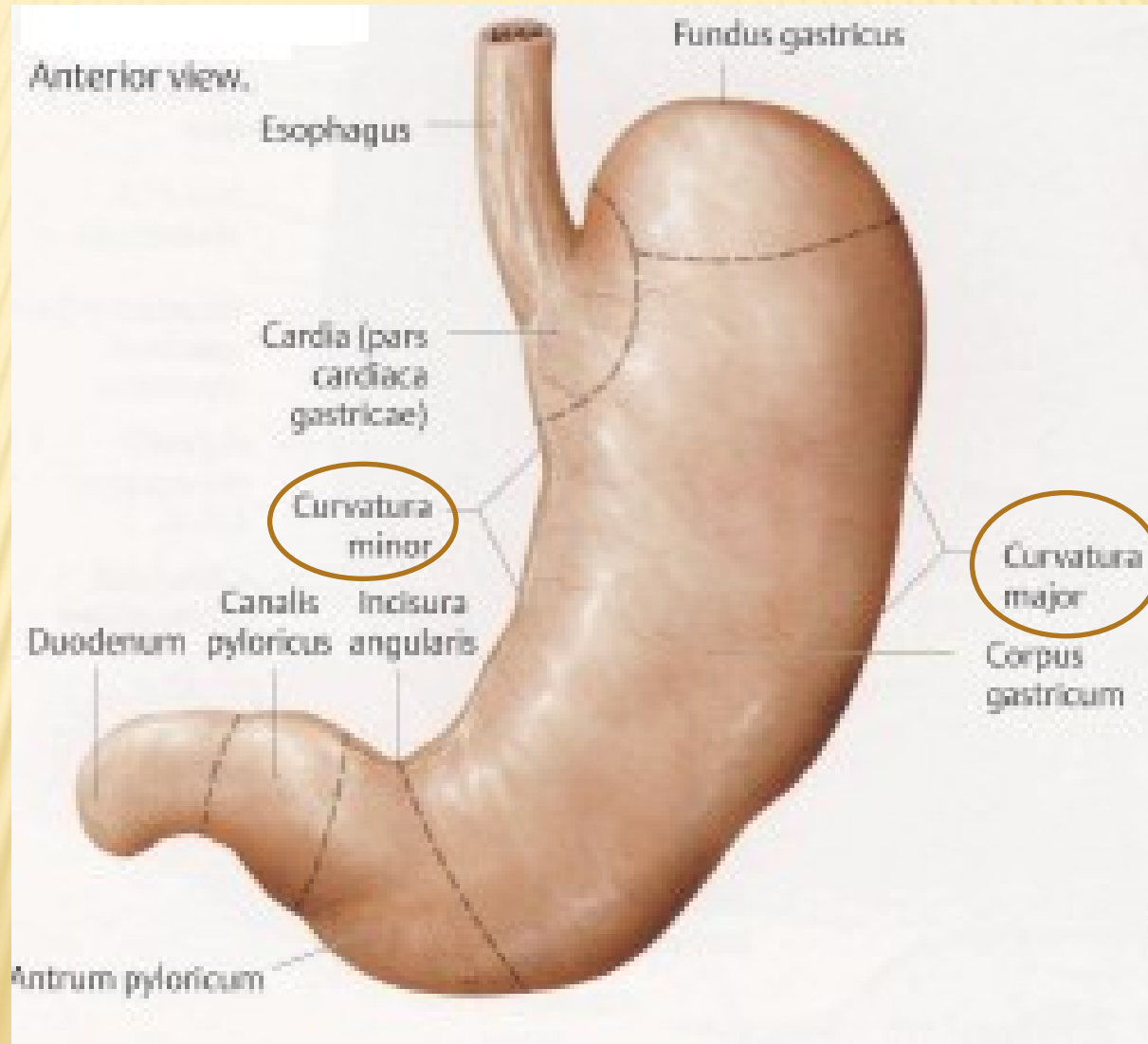
MUSCULUS ABDUCTOR DIGITI MINIMI PEDIS



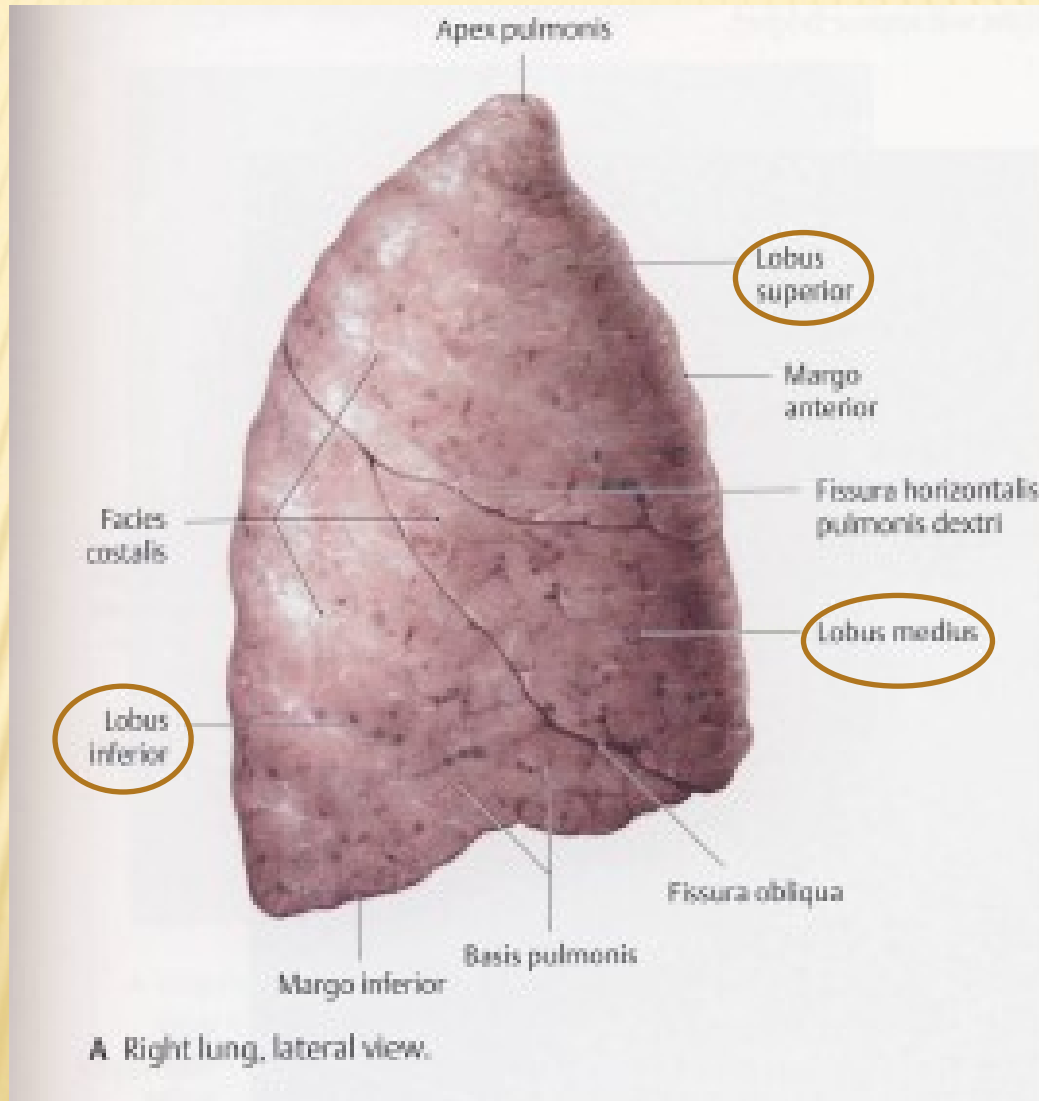
LIGAMENTUM TERES HEPATIS



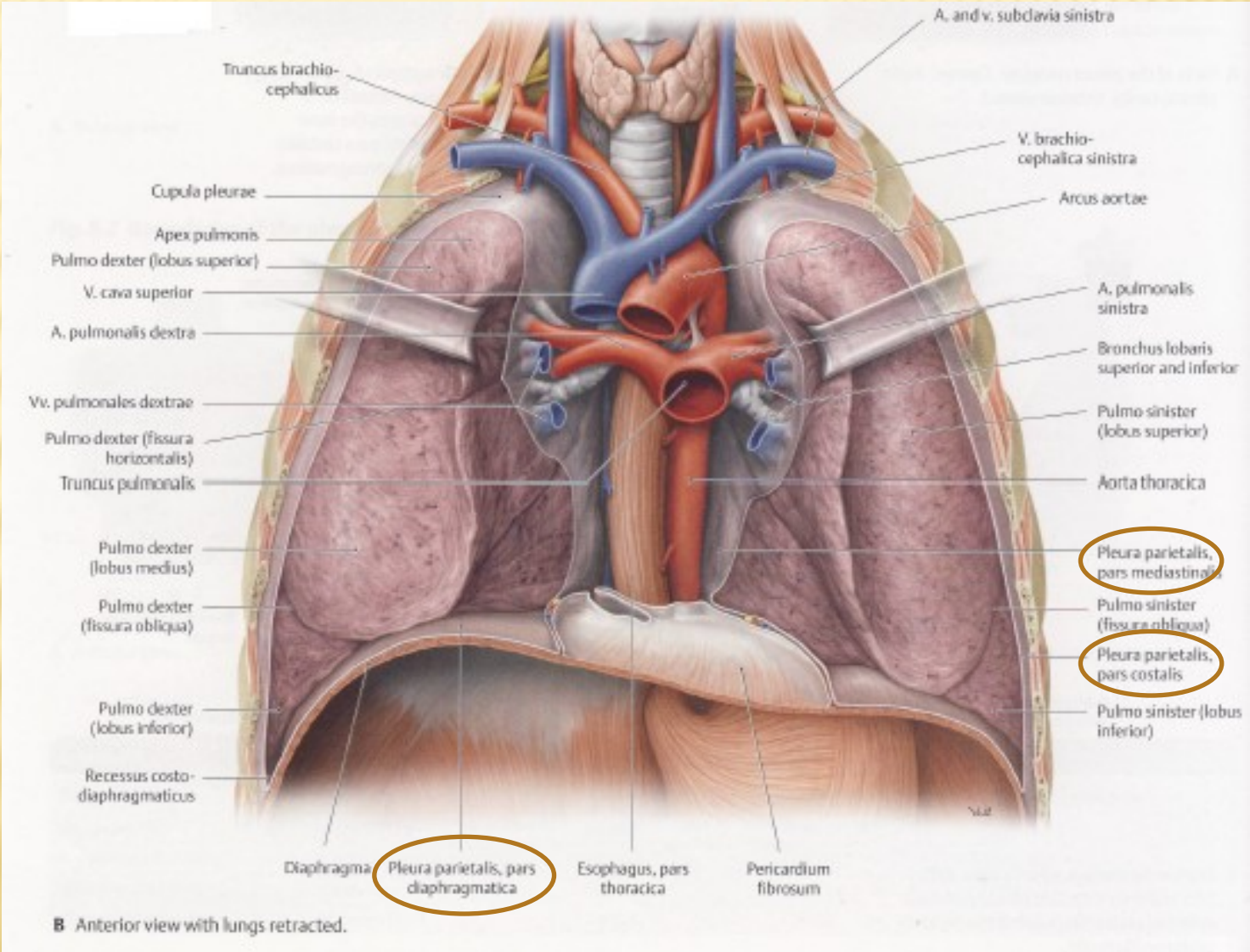
CURVATURA MAJOR, MINOR



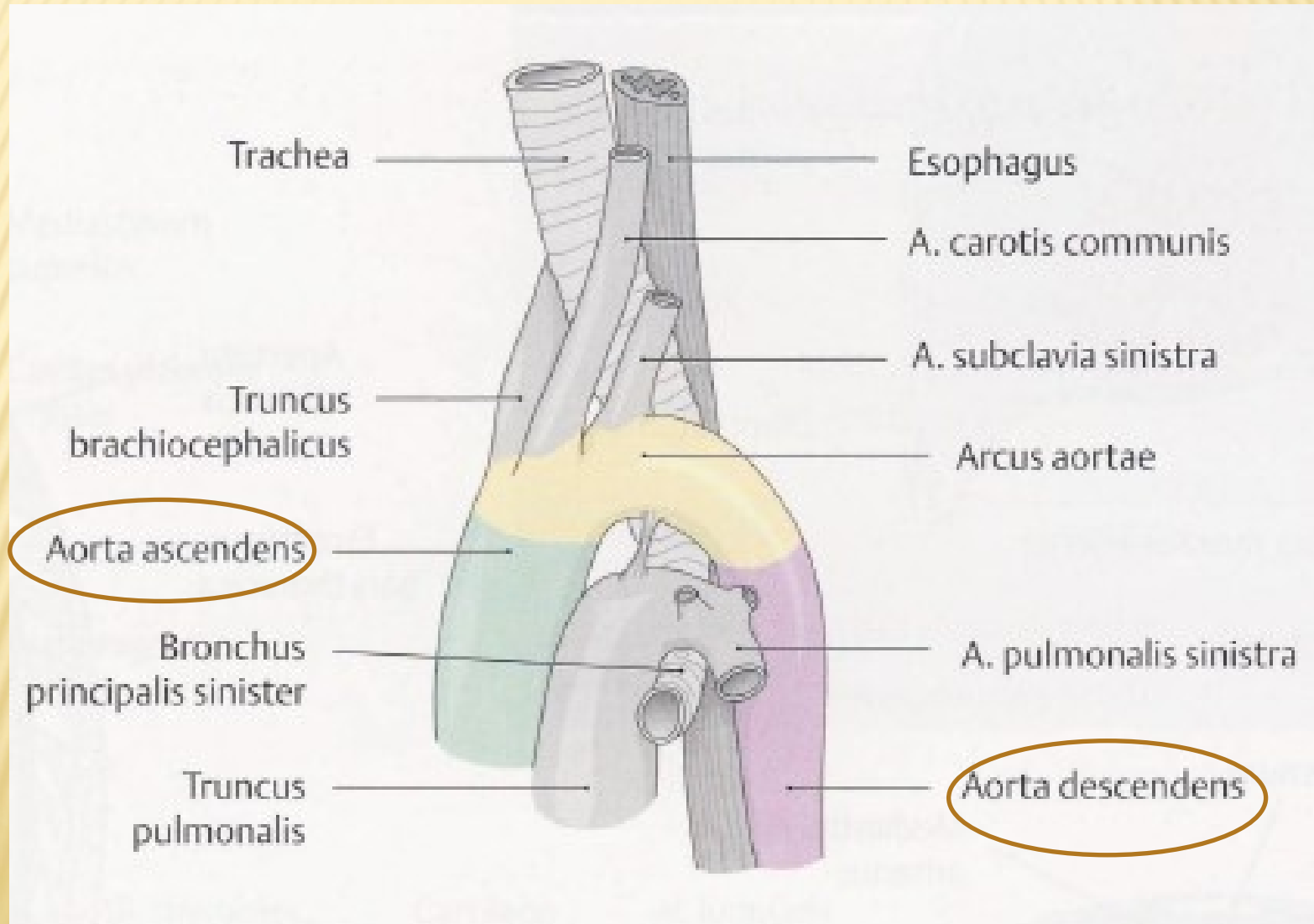
LOBUS INFERIOR, SUPERIOR, MEDIUS PULMONIS DEXTRI



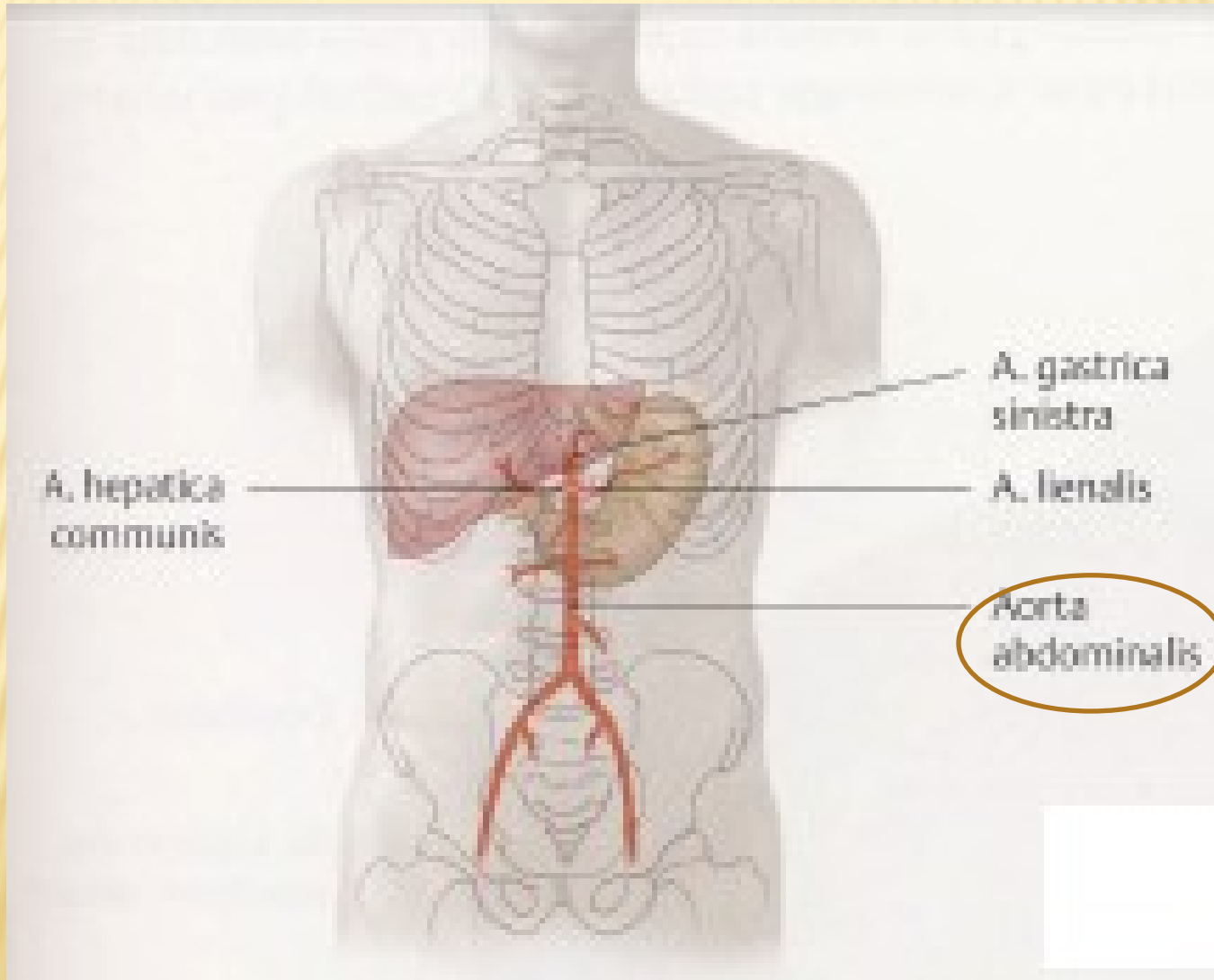
PLEURA PARIETALIS



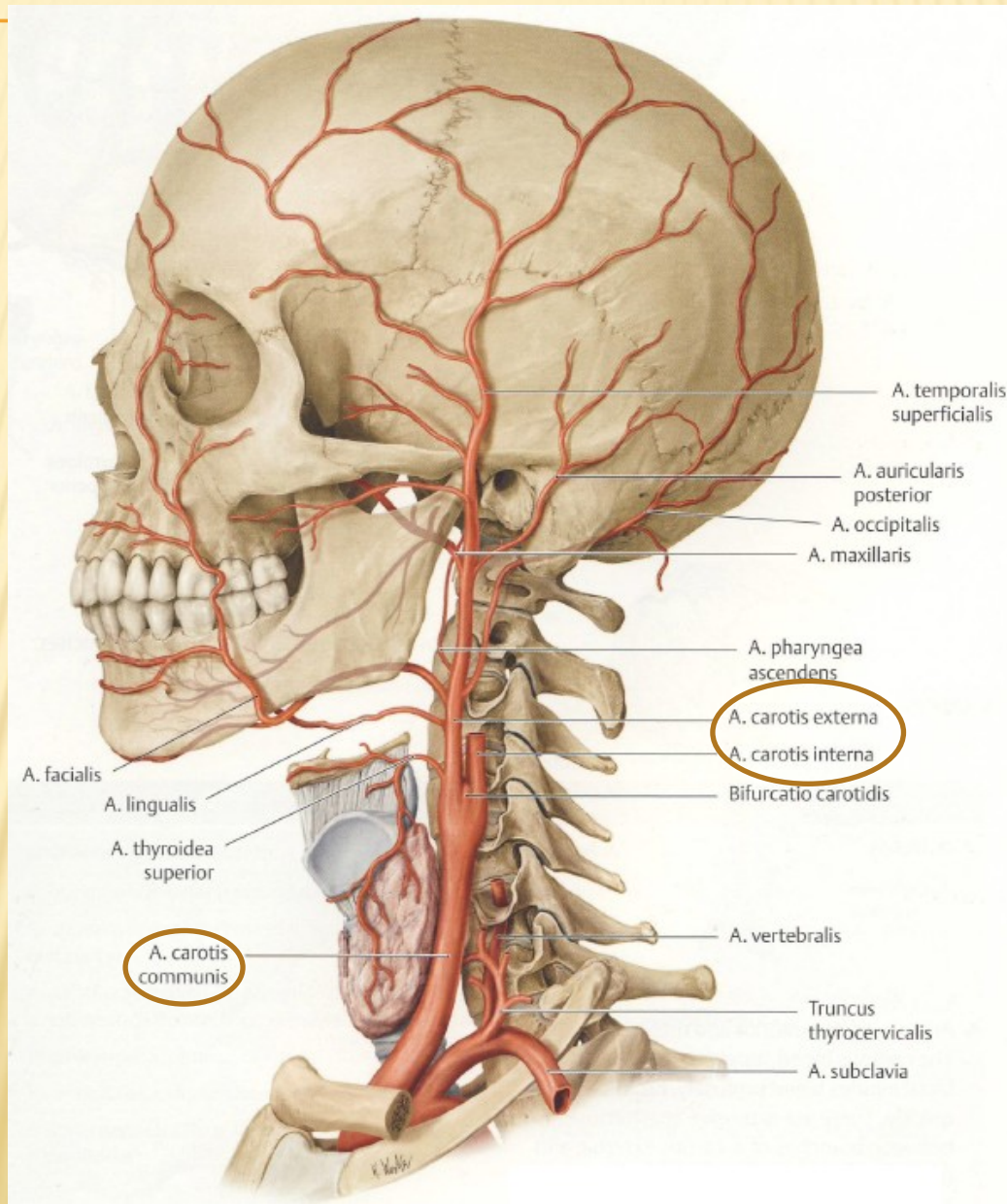
AORTA ASCENDENS, DESCENDENS



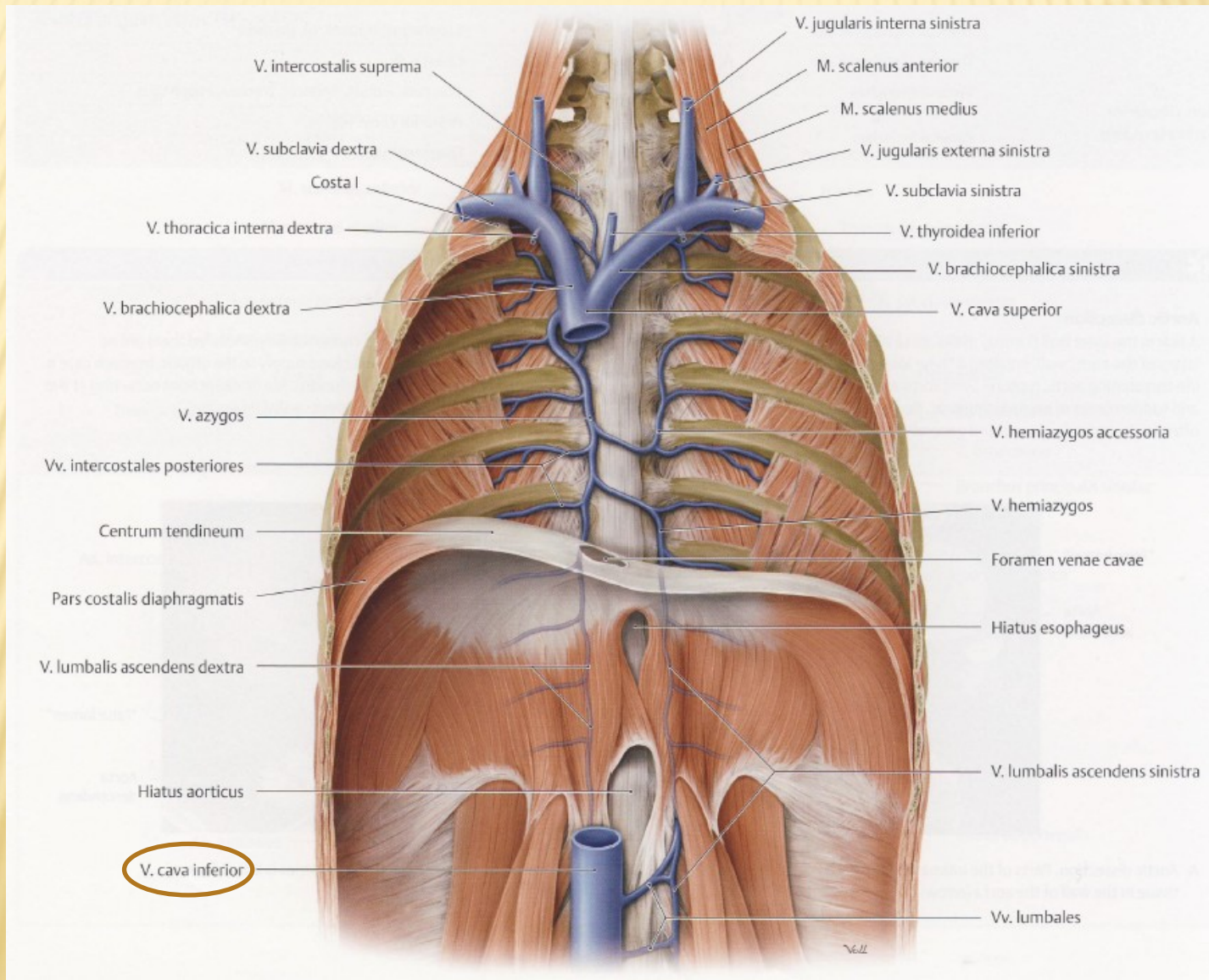
AORTA ABDOMINALIS



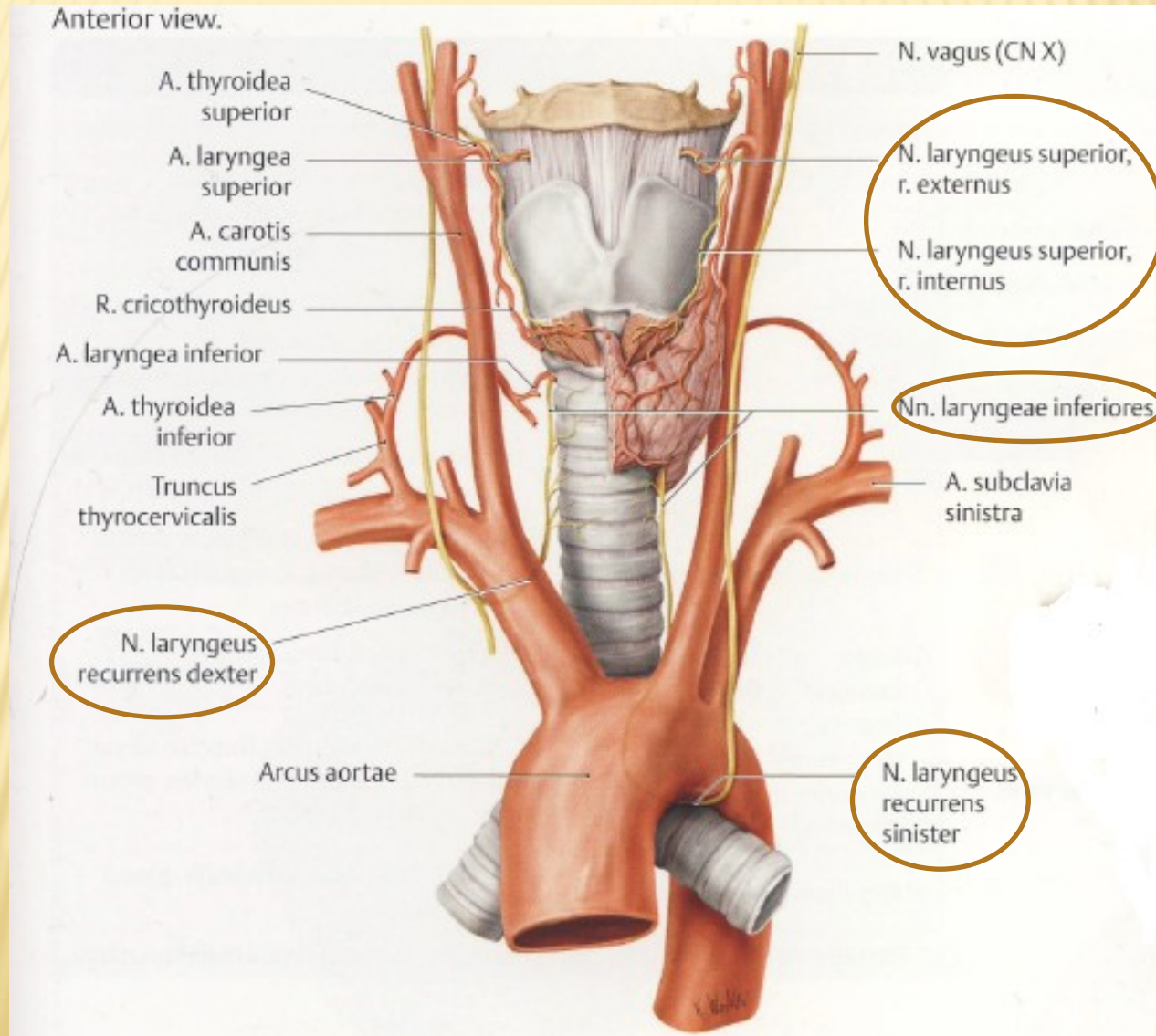
ARTERIA CAROTIS COMMUNIS EXTERNA, INTERNA



VENA CAVA INFERIOR

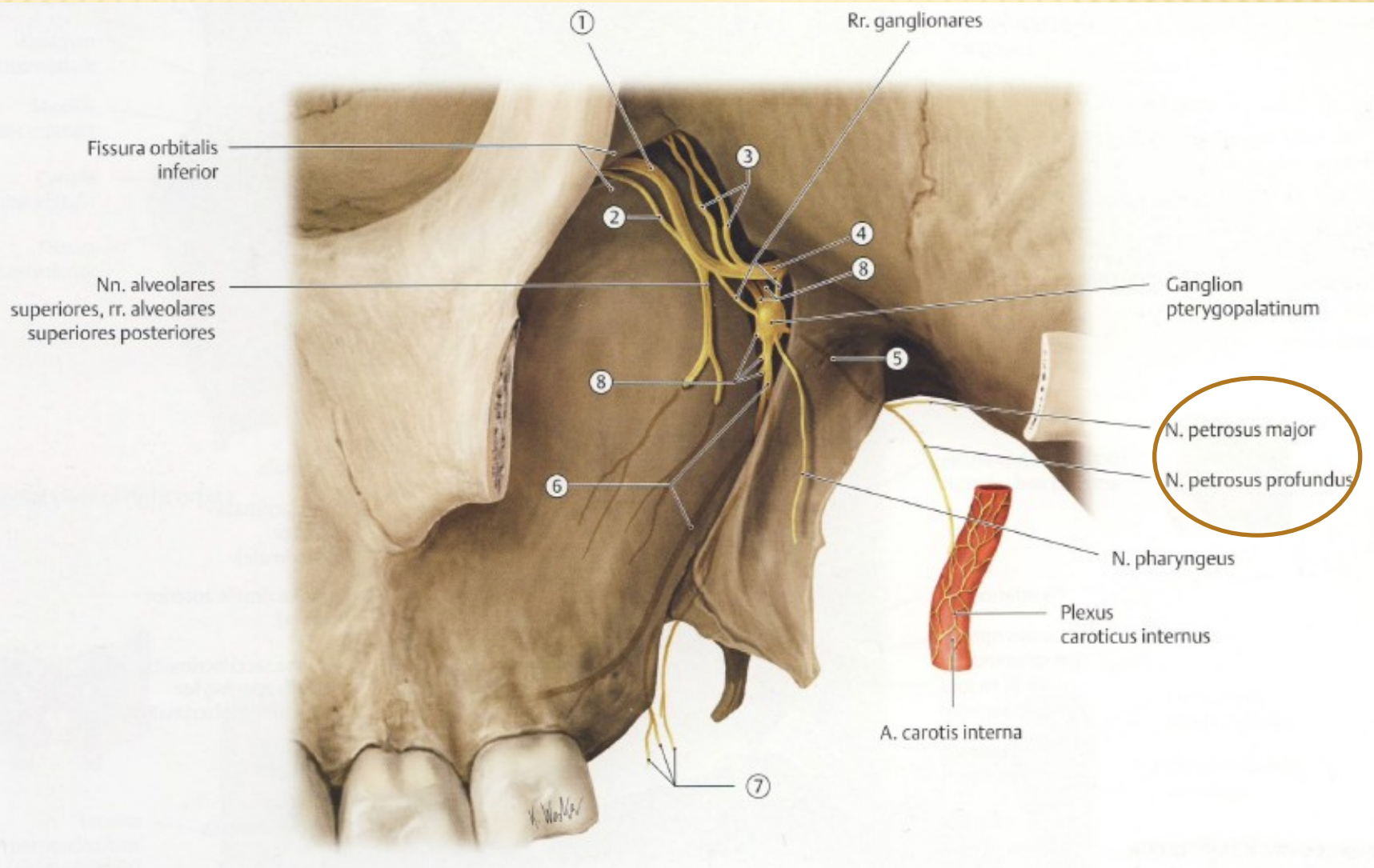


NERVUS LARYNGEUS INFERIOR, RECURRENS, SUPERIOR

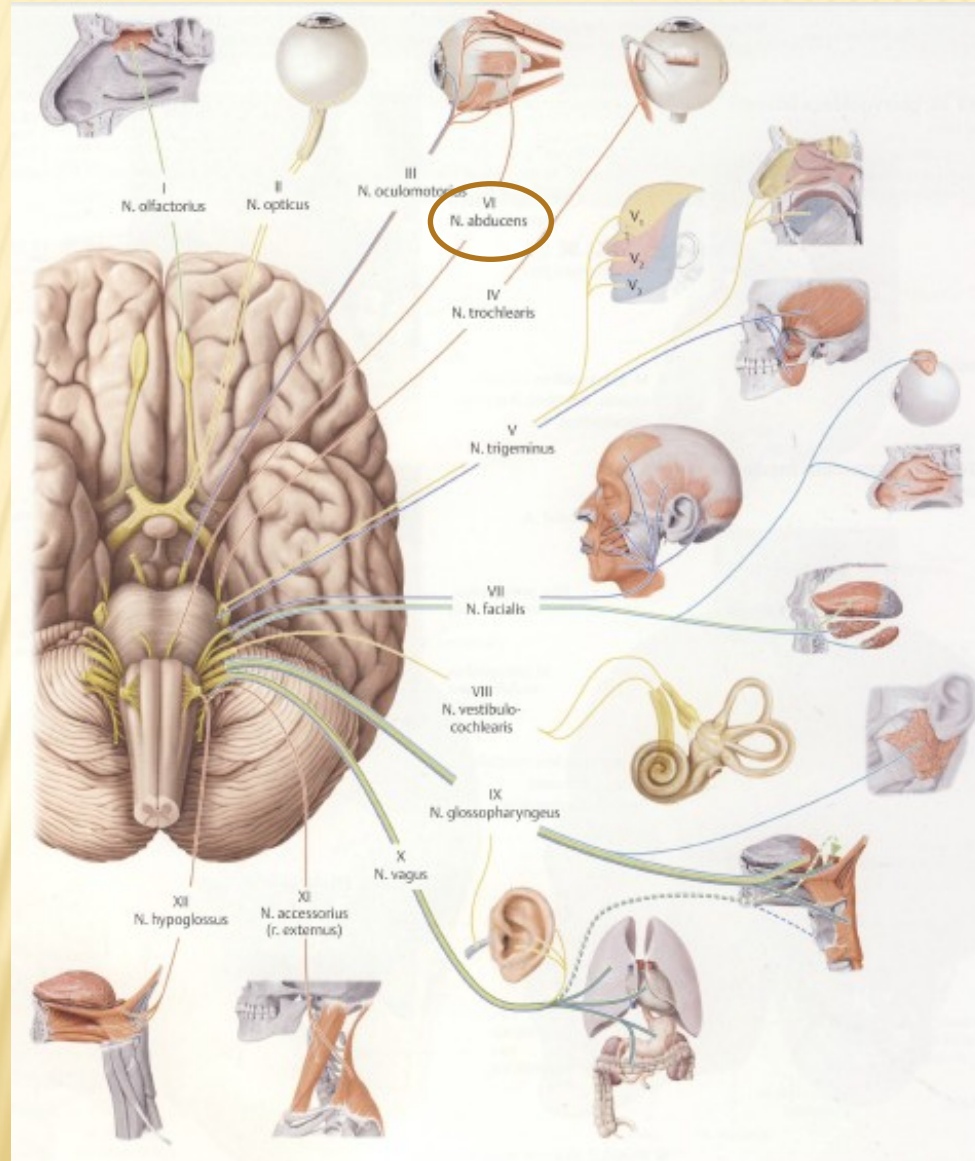


NERVUS PETROSUS MAJOR

NERVUS PETROSUS PROFUNDUS



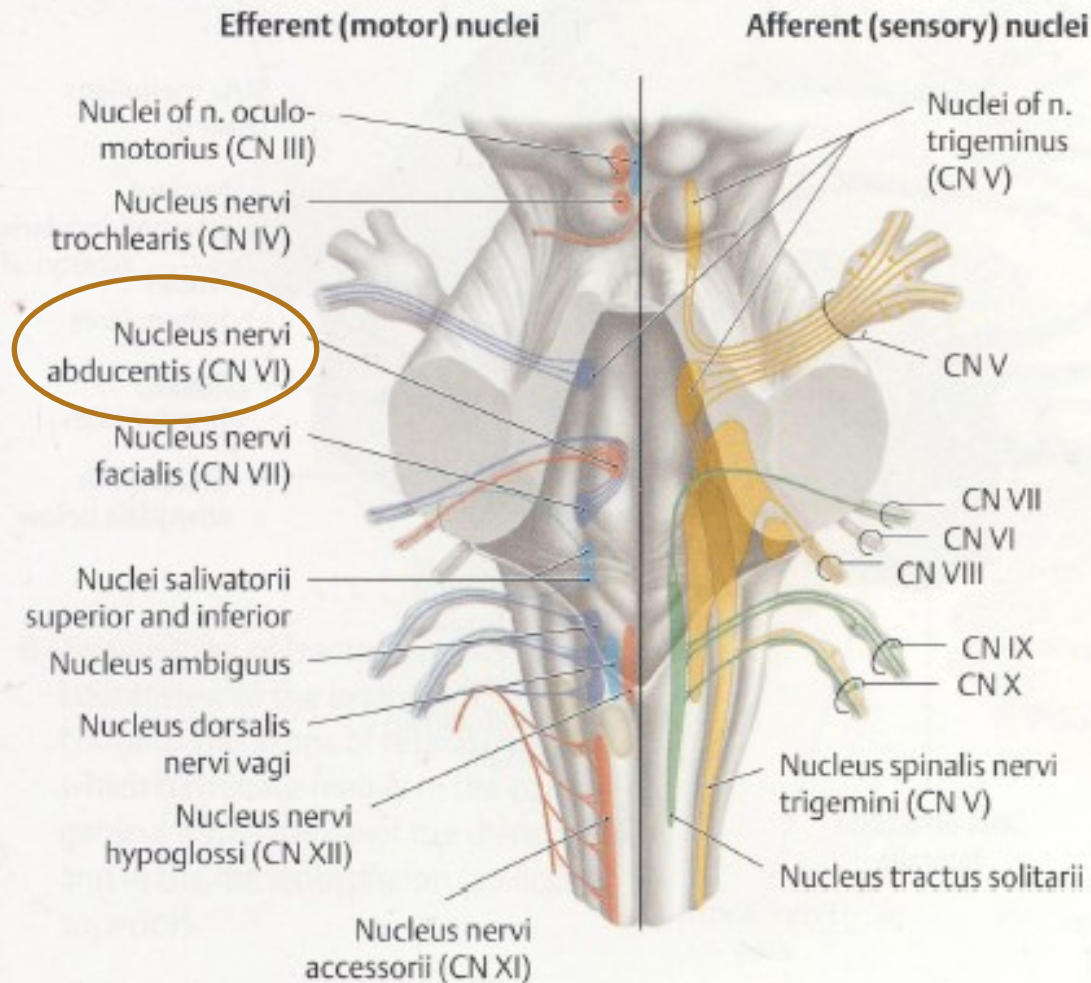
NERVUS ABDUCENS



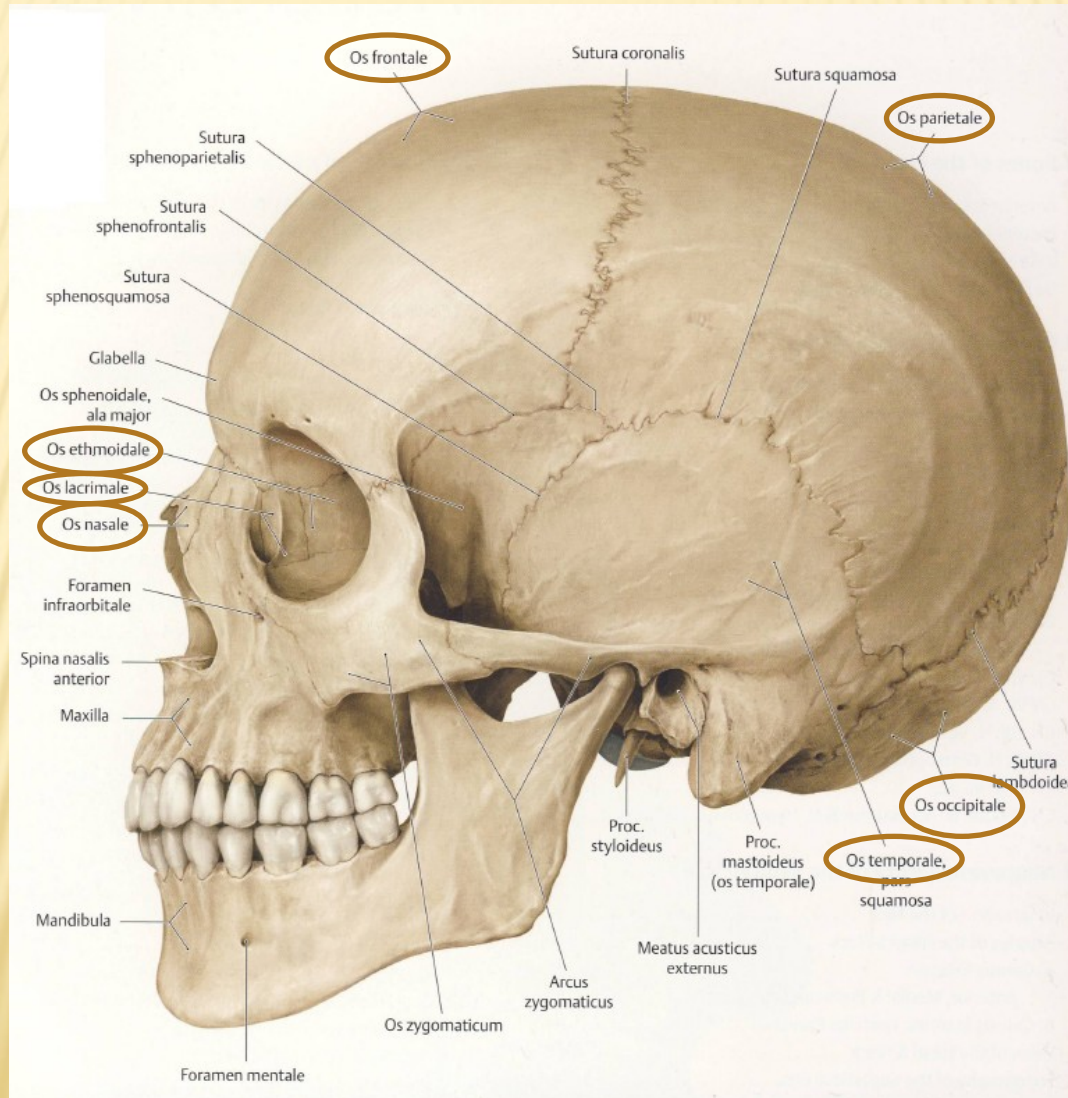
NUCLEUS NERVI ABDUCENTIS

Fig. 31.2 Cranial nerve nuclei

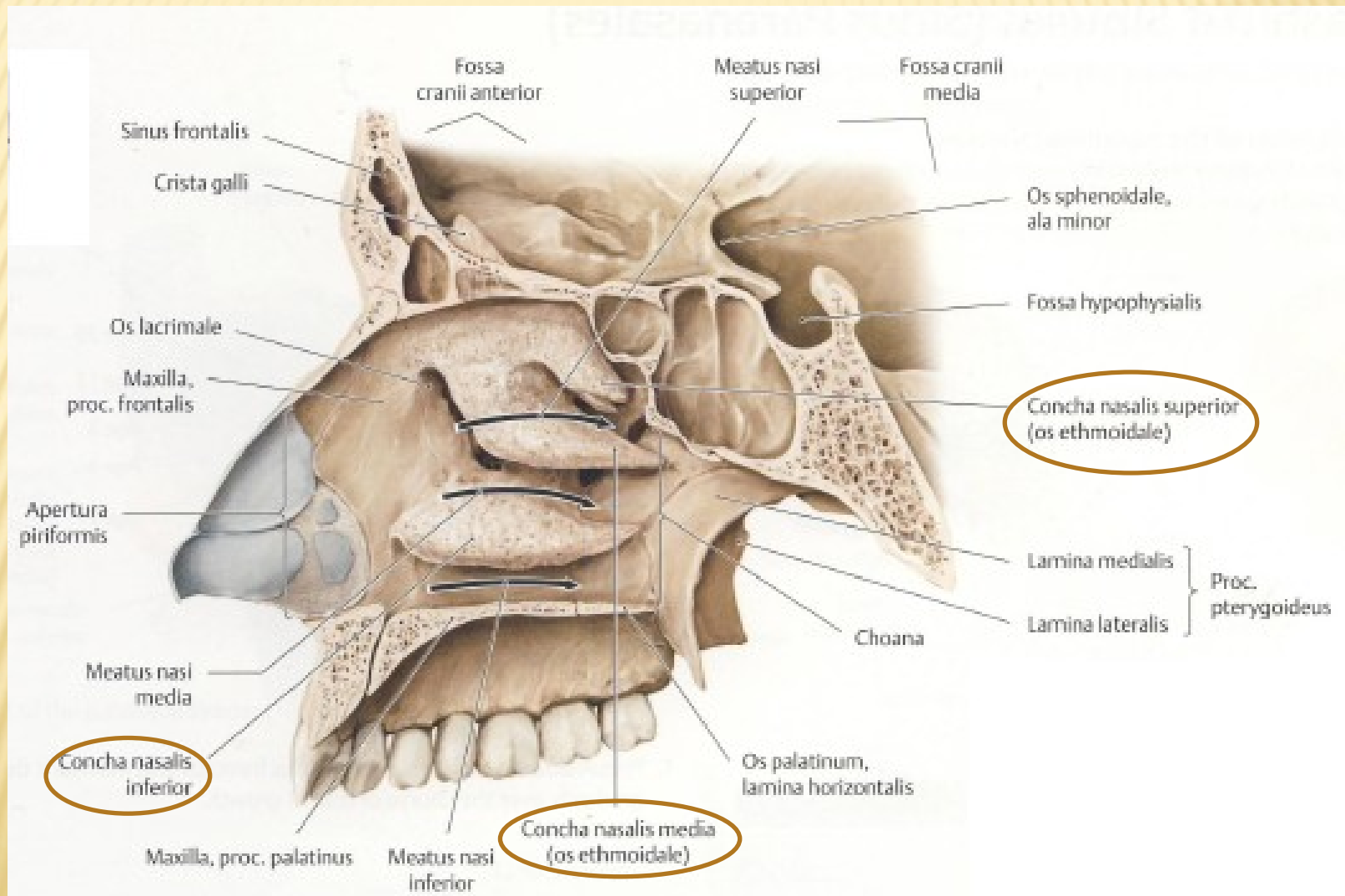
The sensory and motor fibers of cranial nerves III to XII originate and terminate in the brainstem at specific nuclei.



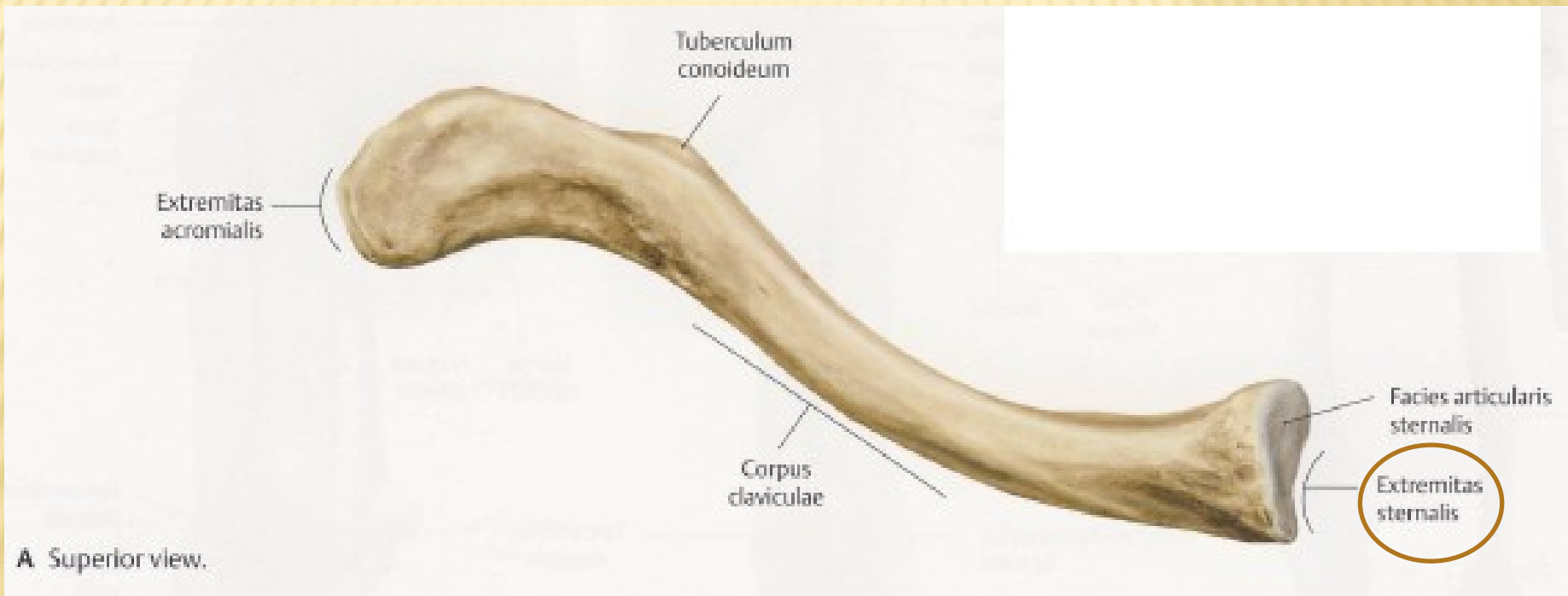
OS ETHMOIDALE, OS FRONTALE, OS LACRIMALE, OS NASALE, OS OCCIPITALE, OS PARIETALE, OS TEMPORALE



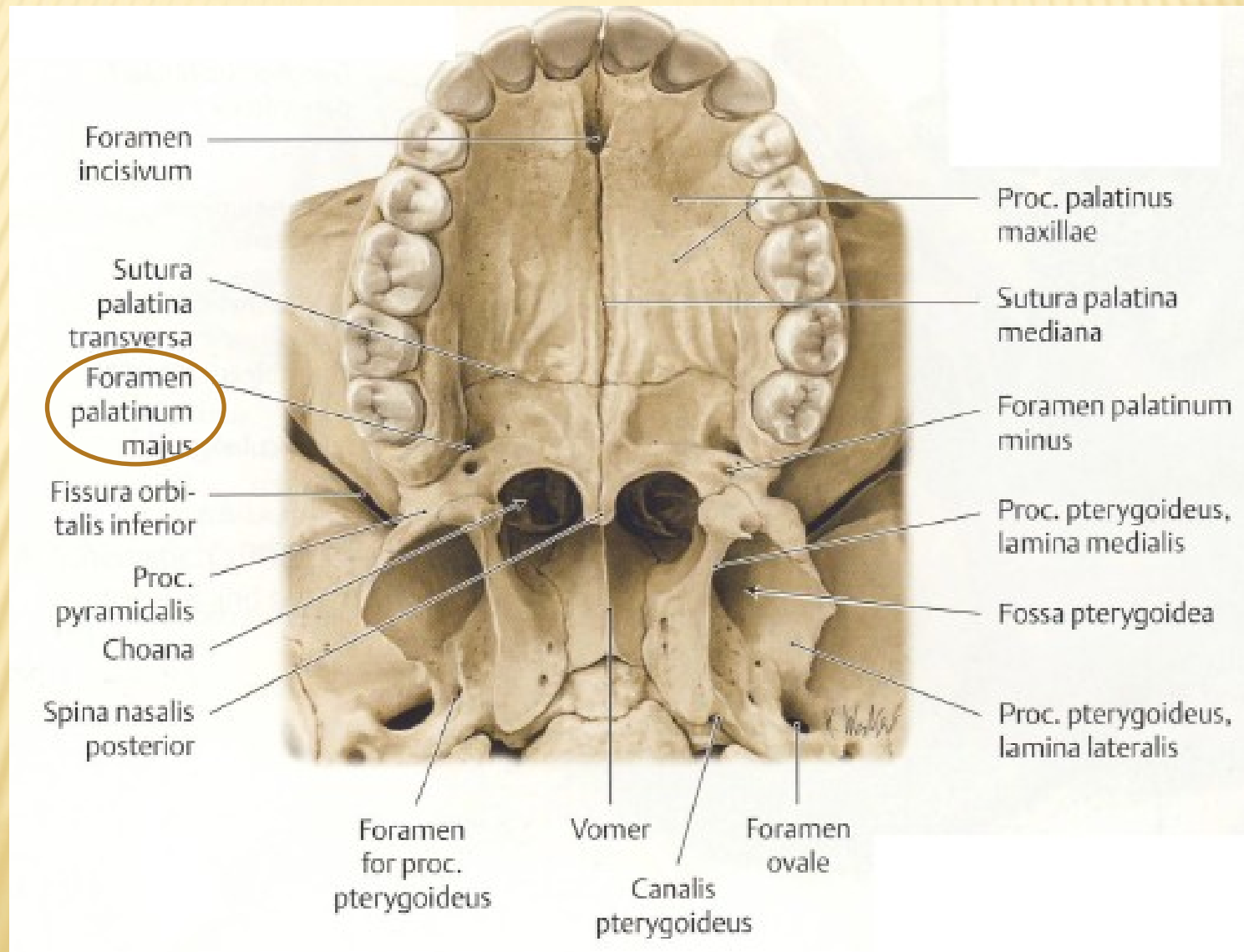
CONCHA NASALIS INFERIOR, MEDIA, SUPERIOR



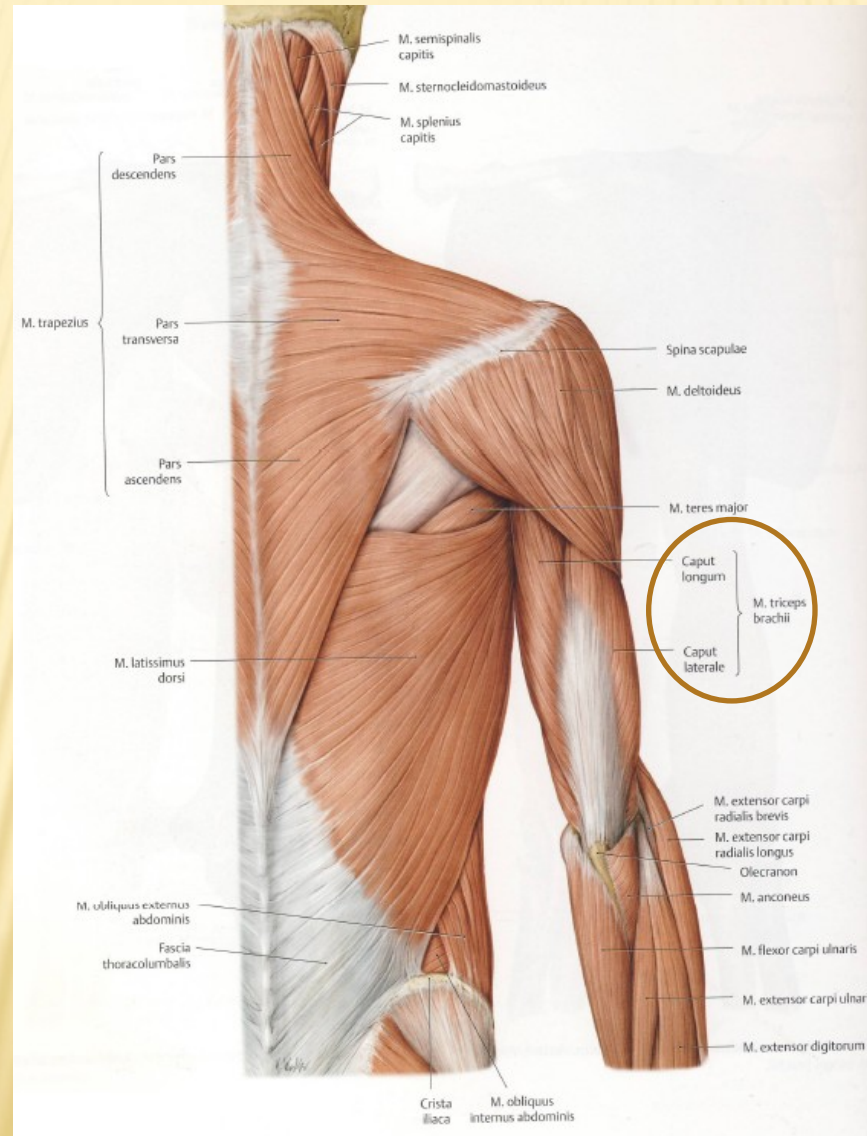
EXTREMITAS STERNALIS CLAVICULAE



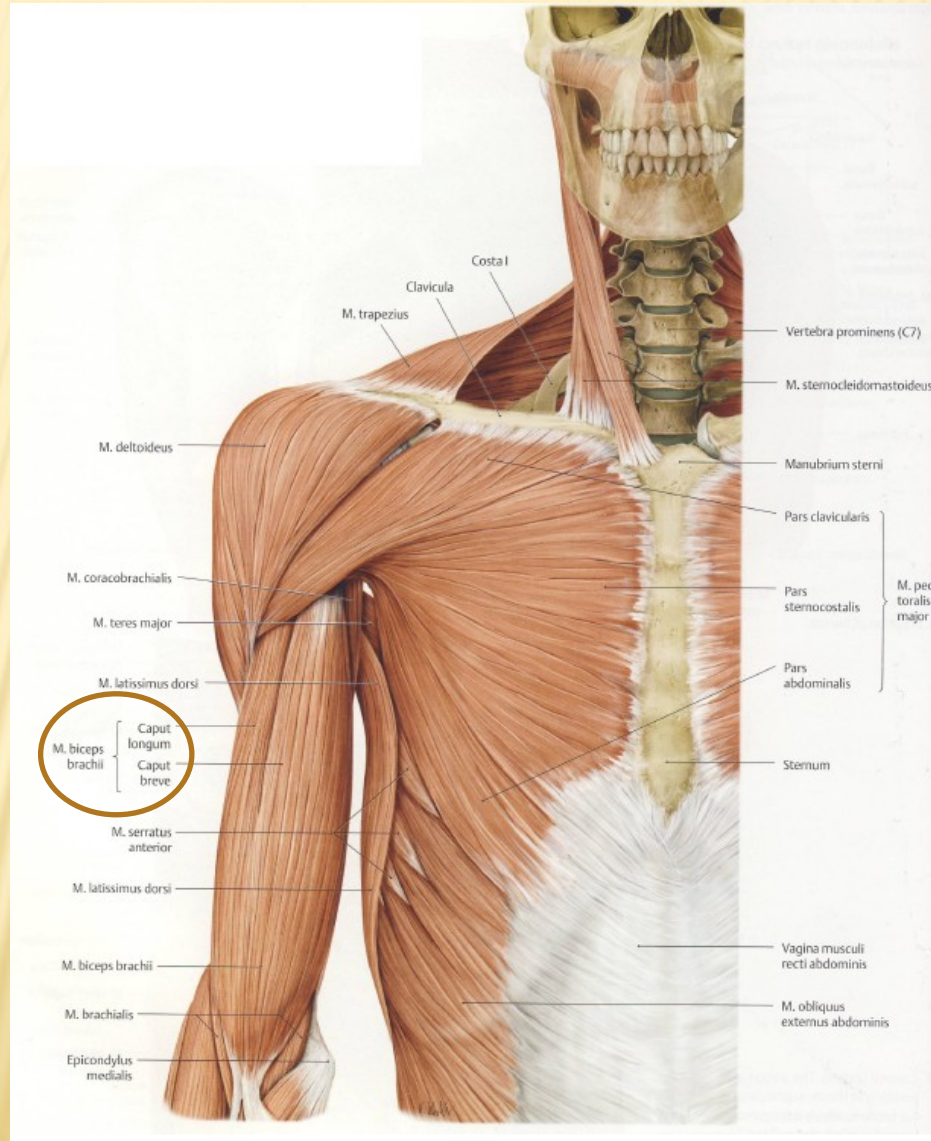
FORAMEN PALATINUM MAJUS



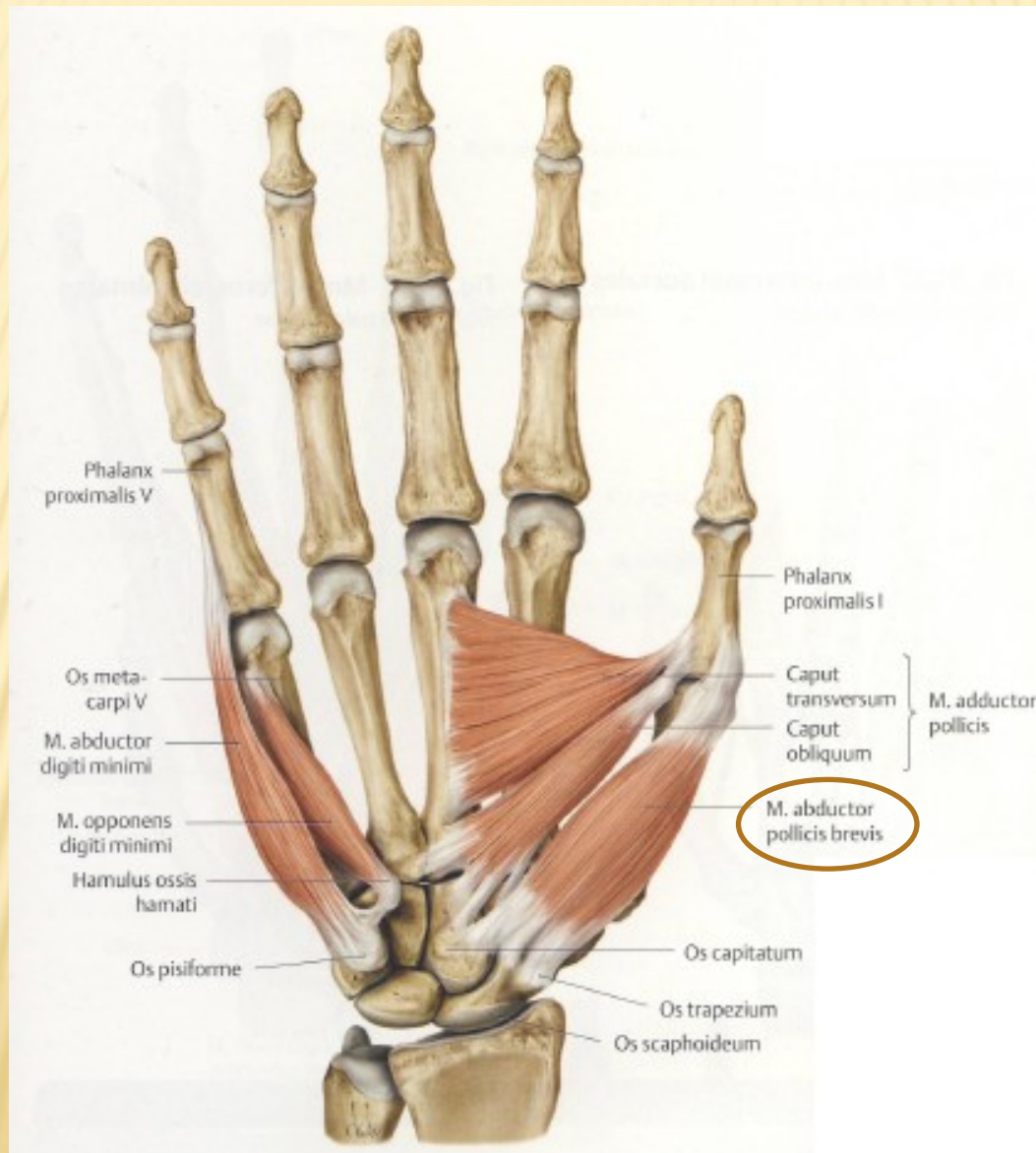
MUSCULUS TRICEPS BRACHII



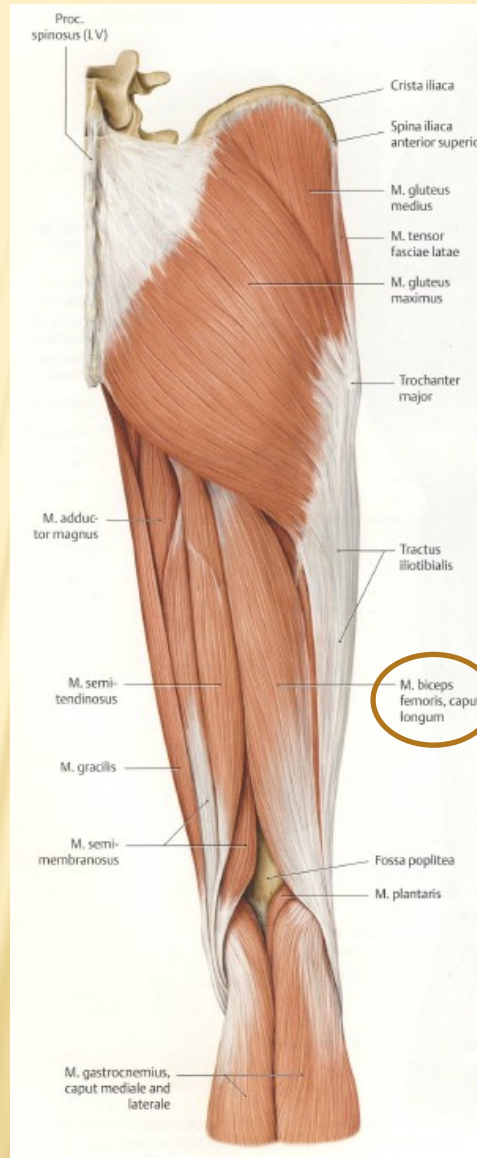
CAPUT BREVE MUSCULI BICIPITIS BRACHII



MUSCULUS ABDUCTOR POLLICIS BREVIS



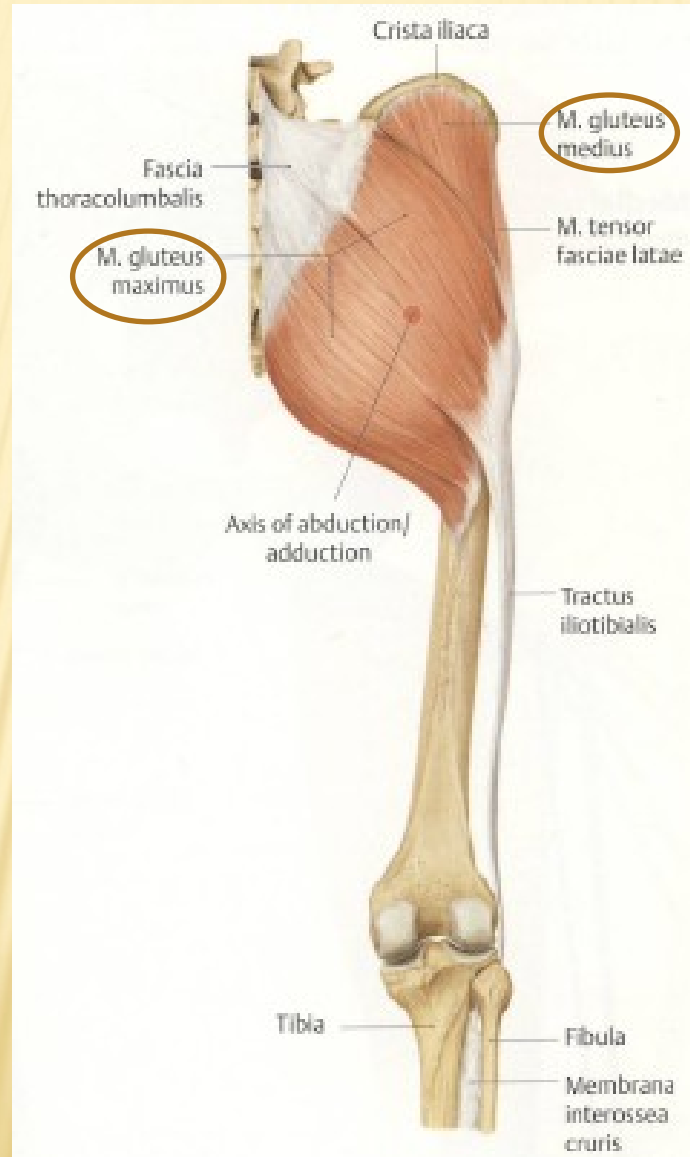
CAPUT LONGUM MUSCULI BICIPITIS FEMORIS



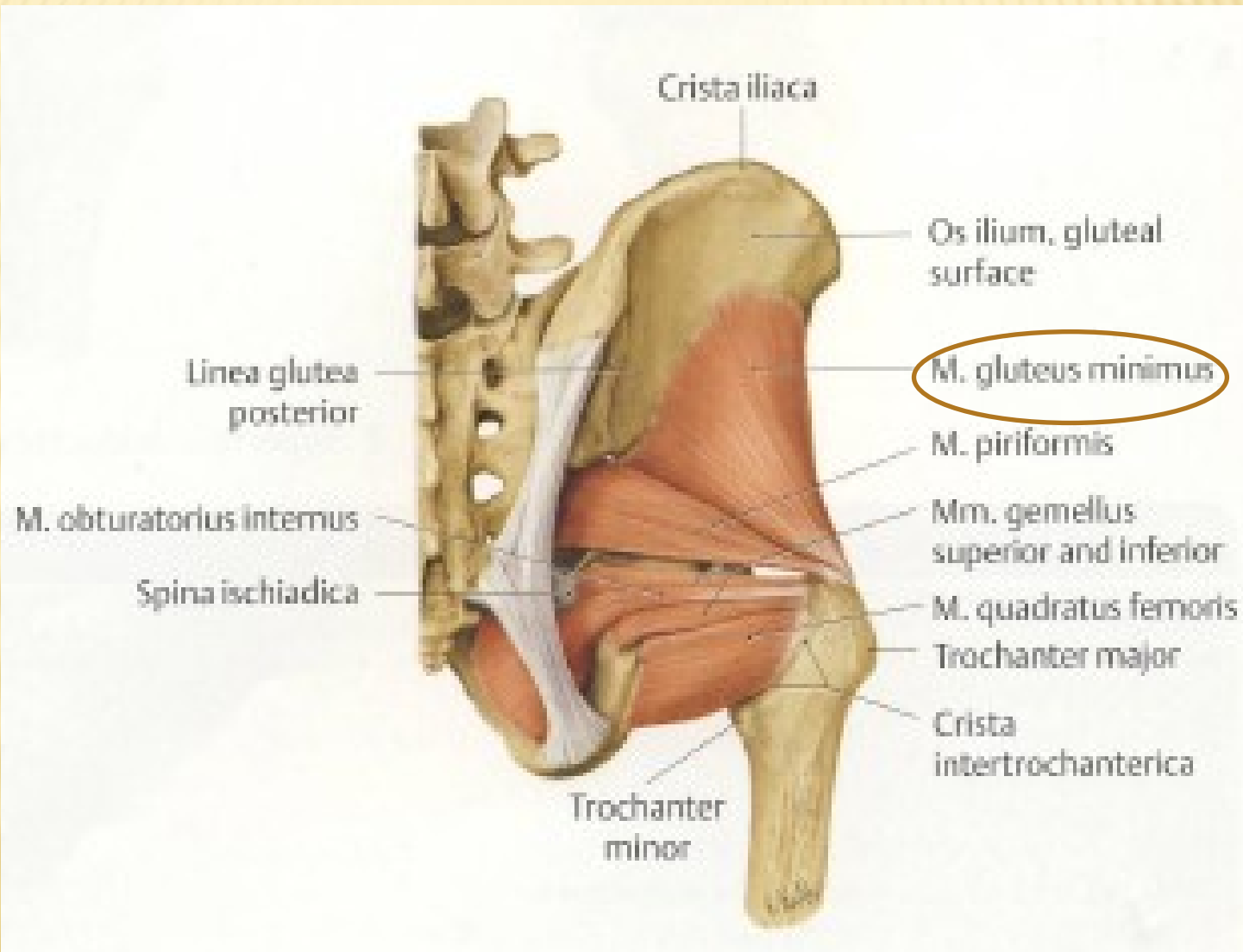
MUSCULUS EXTENSOR HALLUCIS LONGUS



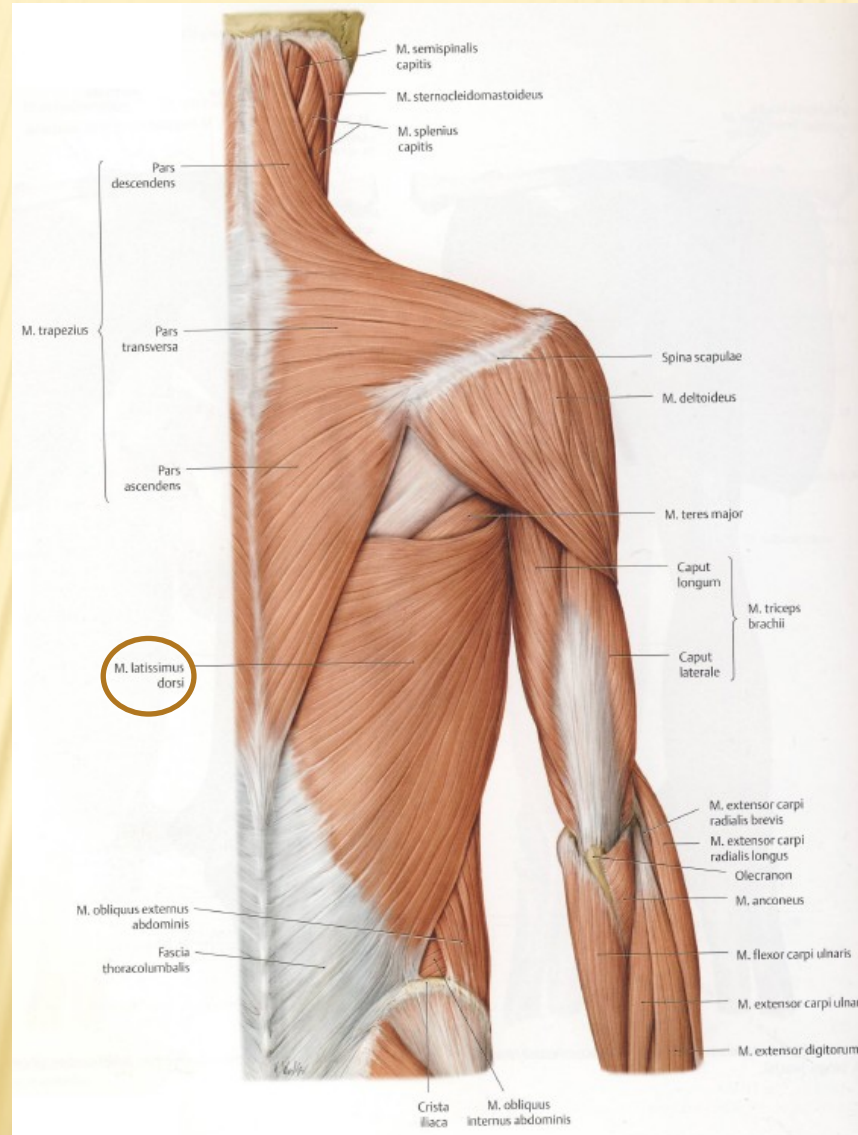
MUSCULUS GLUTEUS MAXIMUS, MEDIUS



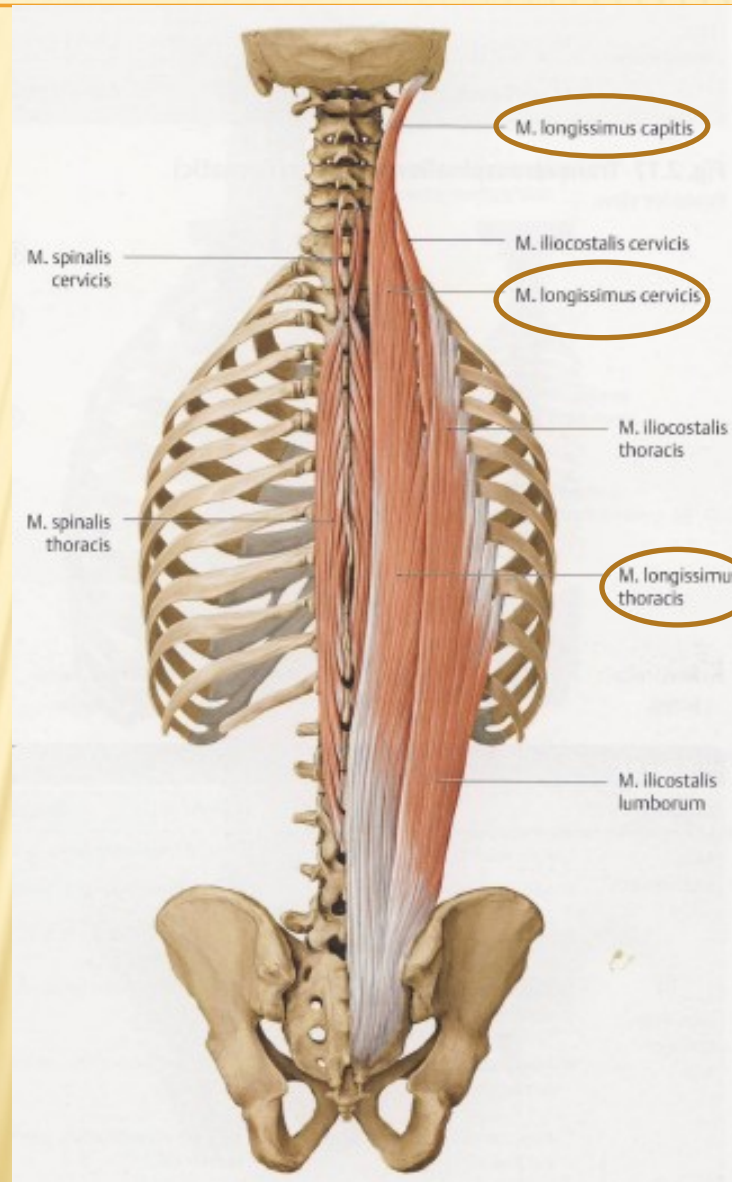
MUSCULUS GLUTEUS MINIMUS



MUSCULUS LATISSIMUS DORSI



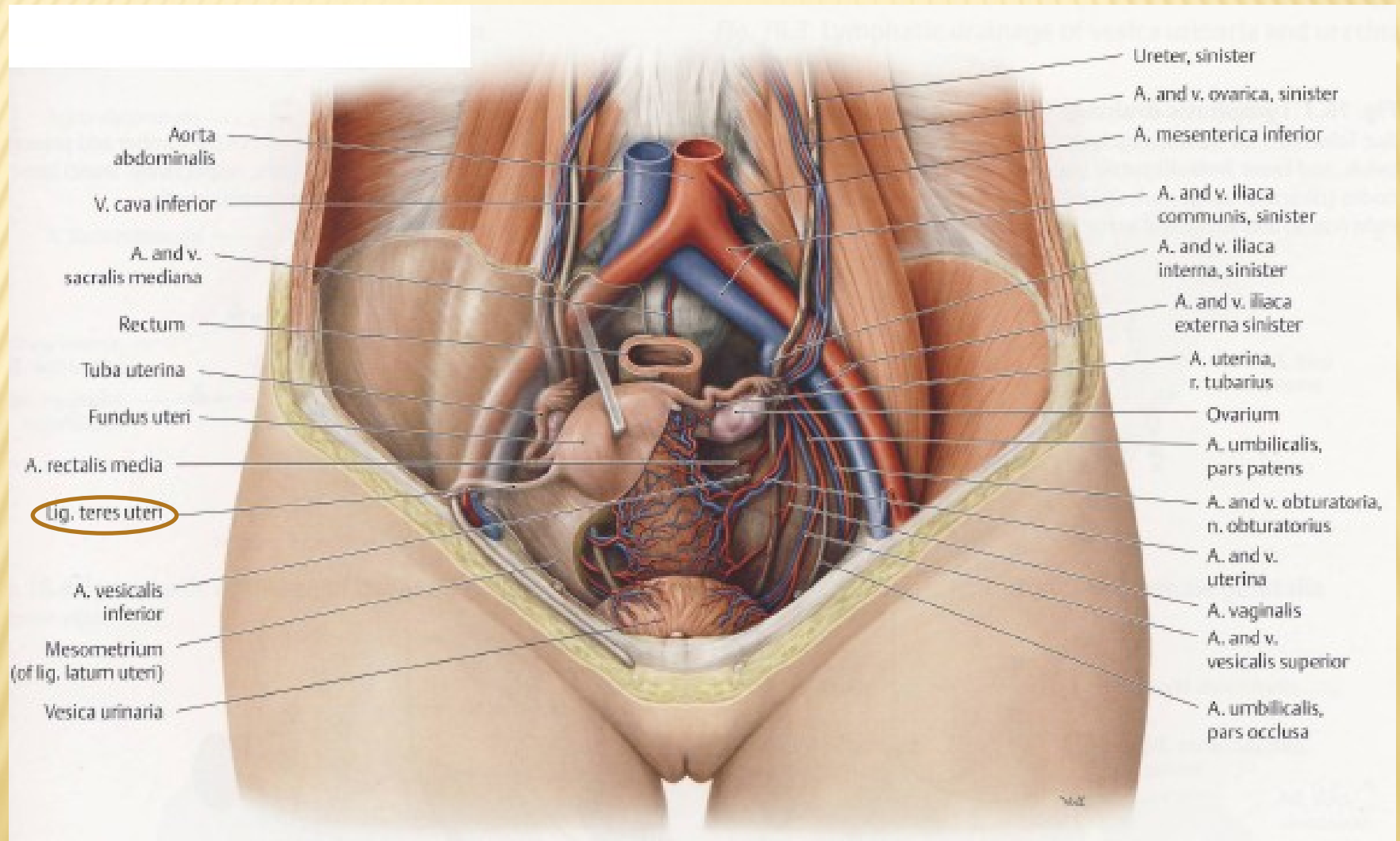
MUSCULUS LONGISSIMUS CAPITIS, CERVICIS, THORACIS



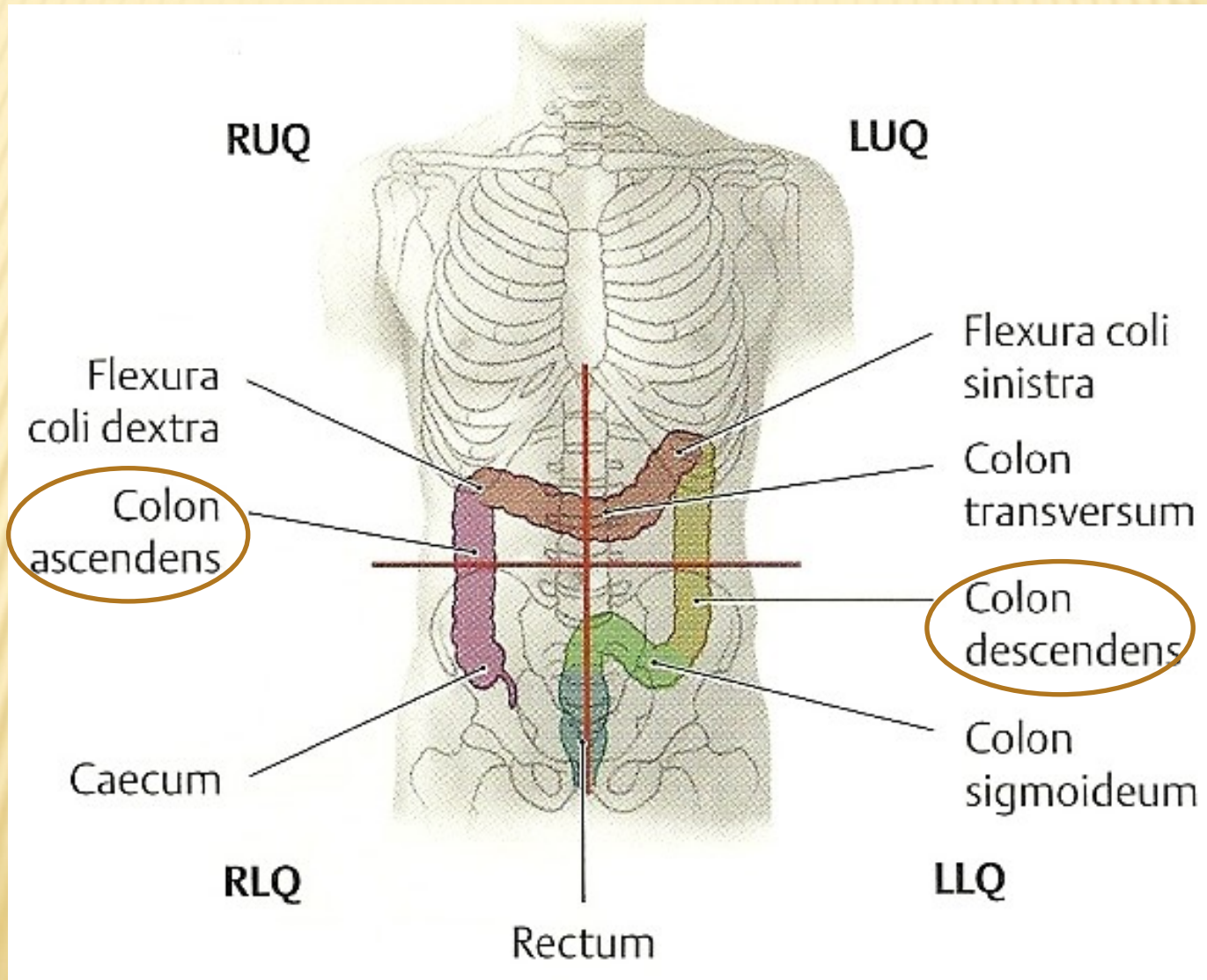
LIGAMENTA METACARPALIA DORSALIA



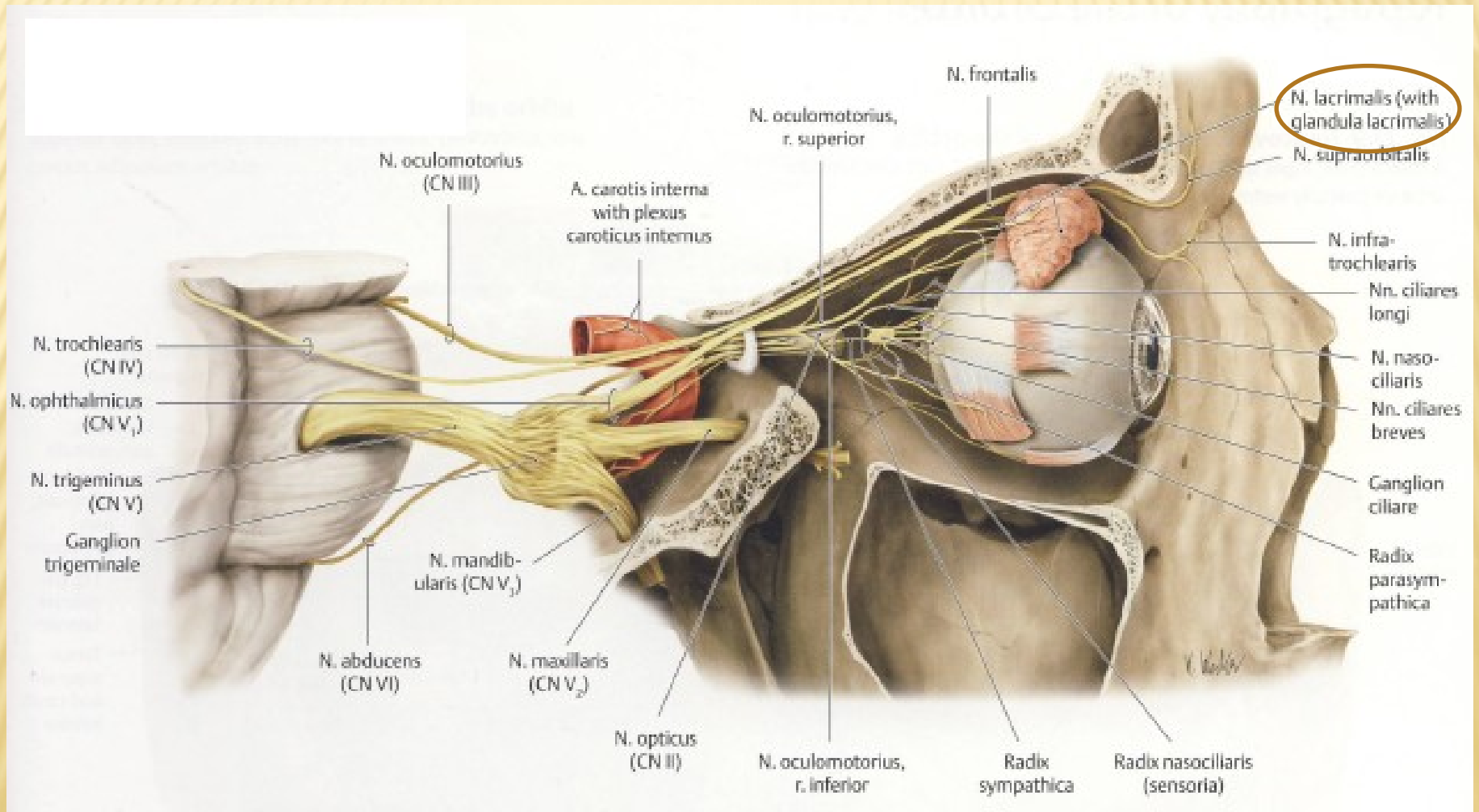
LIGAMENTUM TERES UTERI



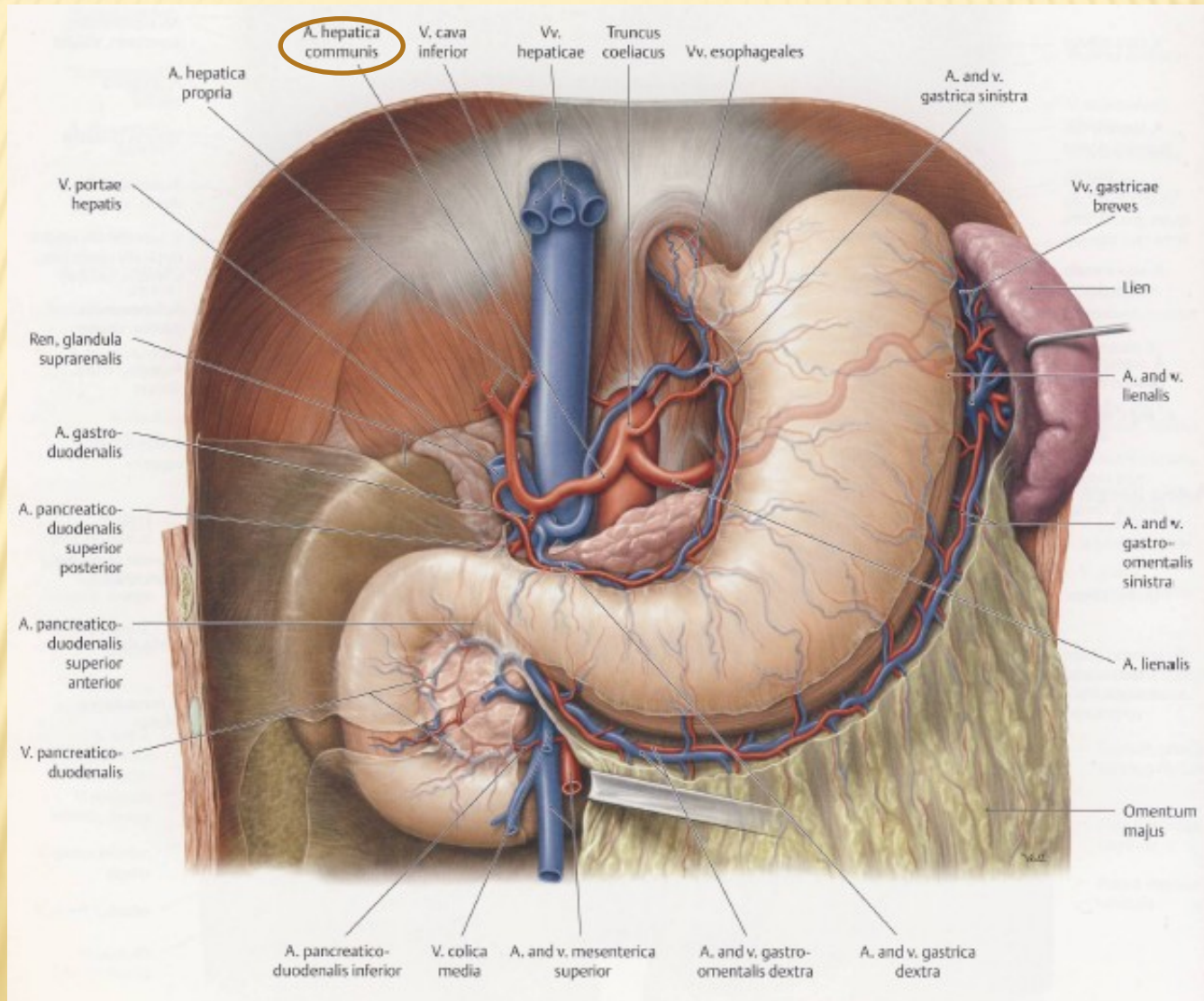
COLON ASCENDENS, DESCENDENS



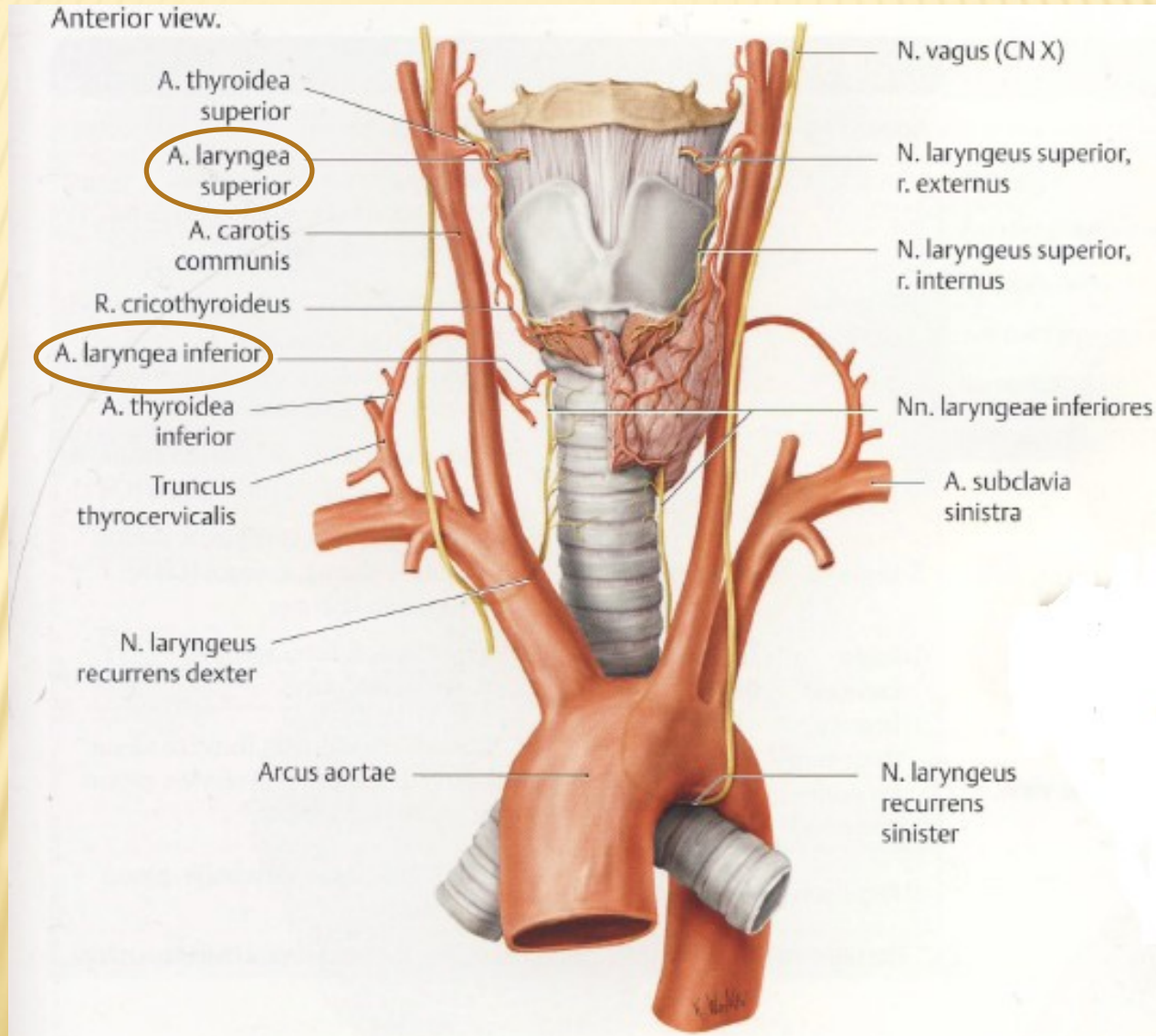
GLANDULA LACRIMALIS



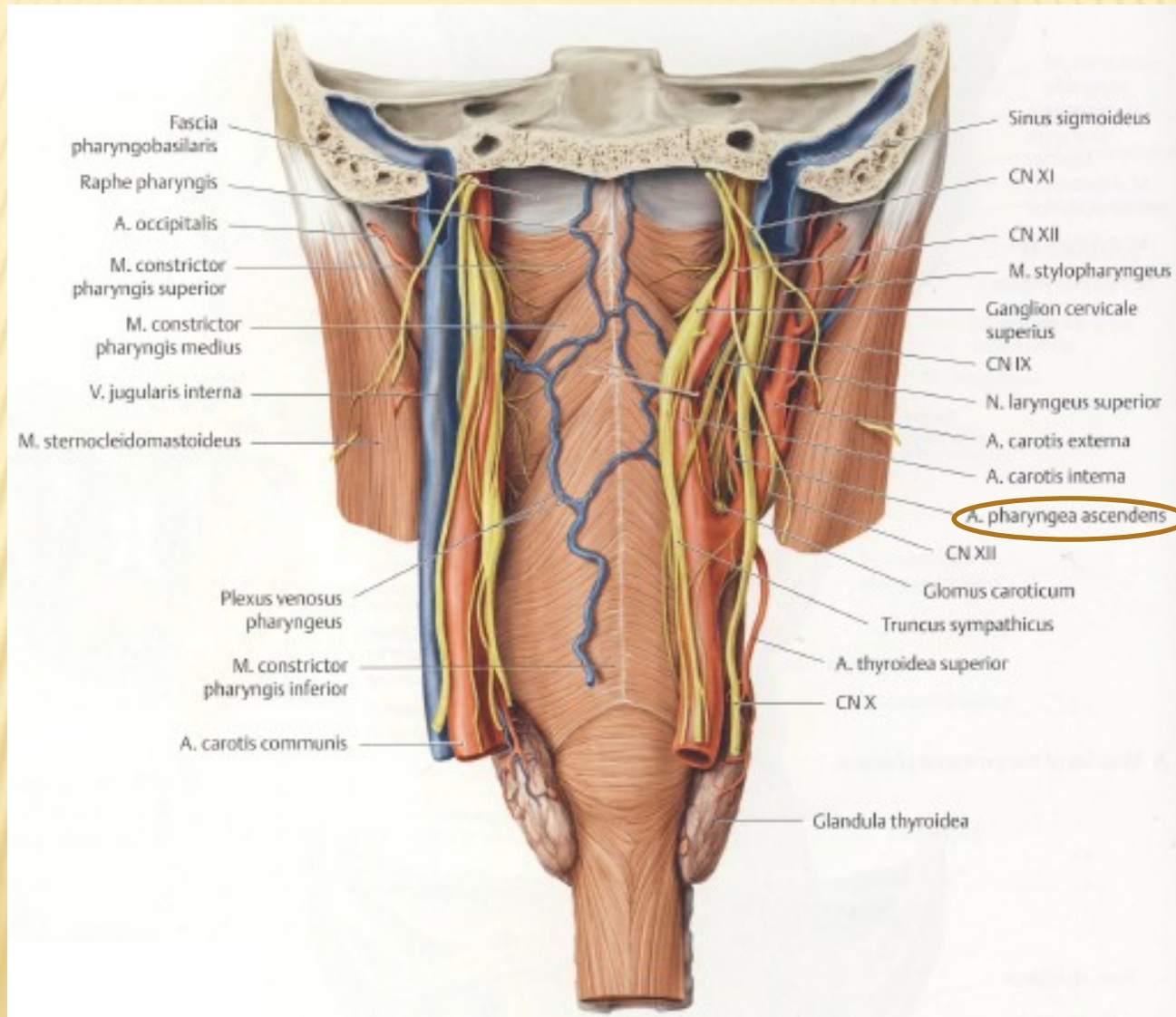
ARTERIA HEPATICA COMMUNIS



ARTERIA LARYNGEA INFERIOR, SUPERIOR



ARTERIA PHARYNGEA ASCENDENS



NERVI CRANIALES

