

1. seminar

Basic anatomy of the nervous system

Nervous system

Division, development

Neuron –types

REFLEX

Gray matter - nuclei

White matter – nerve tracts

- tractus

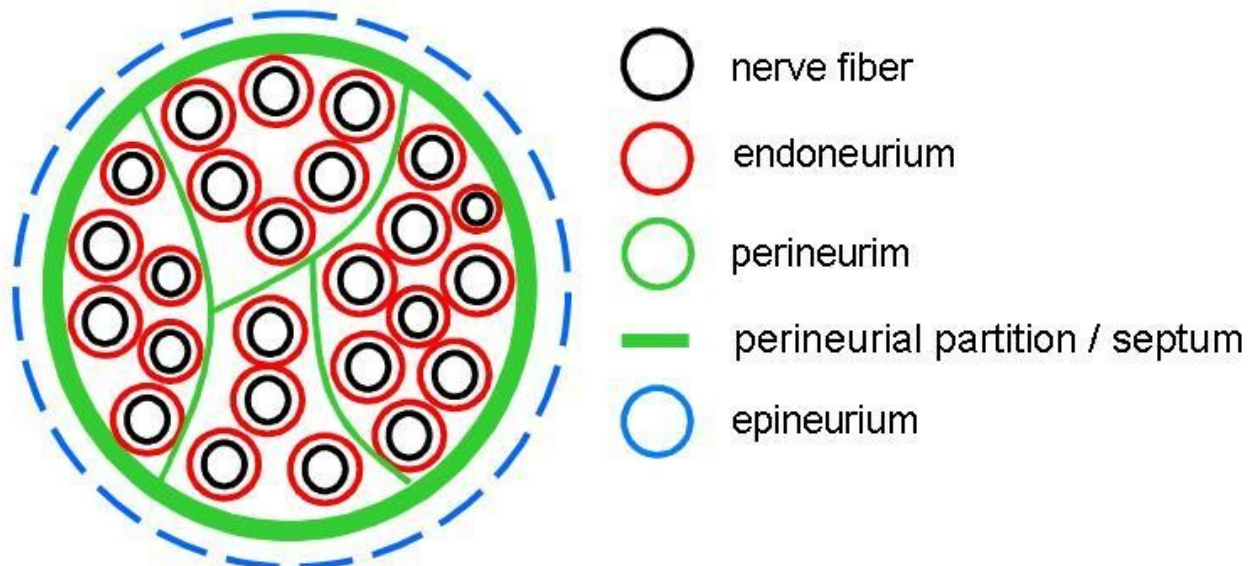
- fasciculus (lemniscus)

terms: afferent, efferent, ascending, descending

substantia alba x substantia grisea

nucleus motorius x terminationis

functional zones: sensory, motor, SS, VS, SM, VM, BM



Anatomy of the spinal cord

**decussatio pyramidum – L2 – conus medullaris – filum terminale
cauda equina**

intumescencia cervicalis (C3-T2) & lumbosacralis (T9-L1)

Fissura mediana anterior

Sulcus medianus posterior

Sulcus anterolateralis

Sulcus posterolateralis

Sulcus intermedius posterior

Funiculus anterior

lateralis

posterior- pars medialis- fasciculus gracilis

- pars lateralis- fasciculus cuneatus

Substantia grisea

- cornu anterius, lateralis (substantia intermedia), posterius

- zona intermedia, zona centralis

- columna anterior, lateralis – missing in C region- formatio reticularis, posterior

- nuclei originis (motorii)

– nucl.intermediolateralis et intermediomedialis

– nucl.proprius

- nucl.thoracicus

- substantia gelatinosa Rolandi

- nucl.apicalis

Substantia alba

- funiculus ventralis, lateralis et dorsalis

- fasciculus gracilis et cuneatus

- tracts:

- tr.spinothalamicus

- tr.spinocerebellaris post.et ant.

tr.spinoreticularis

- spinotectalis

- spinoolivaris

- tr.reticulospinalis

- tr.rubrospinalis

- tectospinalis

- olivospinalis,

- vestibulospinalis

- tr.corticospinalis lat.et ant.

