

ORGANUM

VESTIBULOCOCHLEARE

ORGANUM VESTIBULOCOCHLEARE

Auris externa

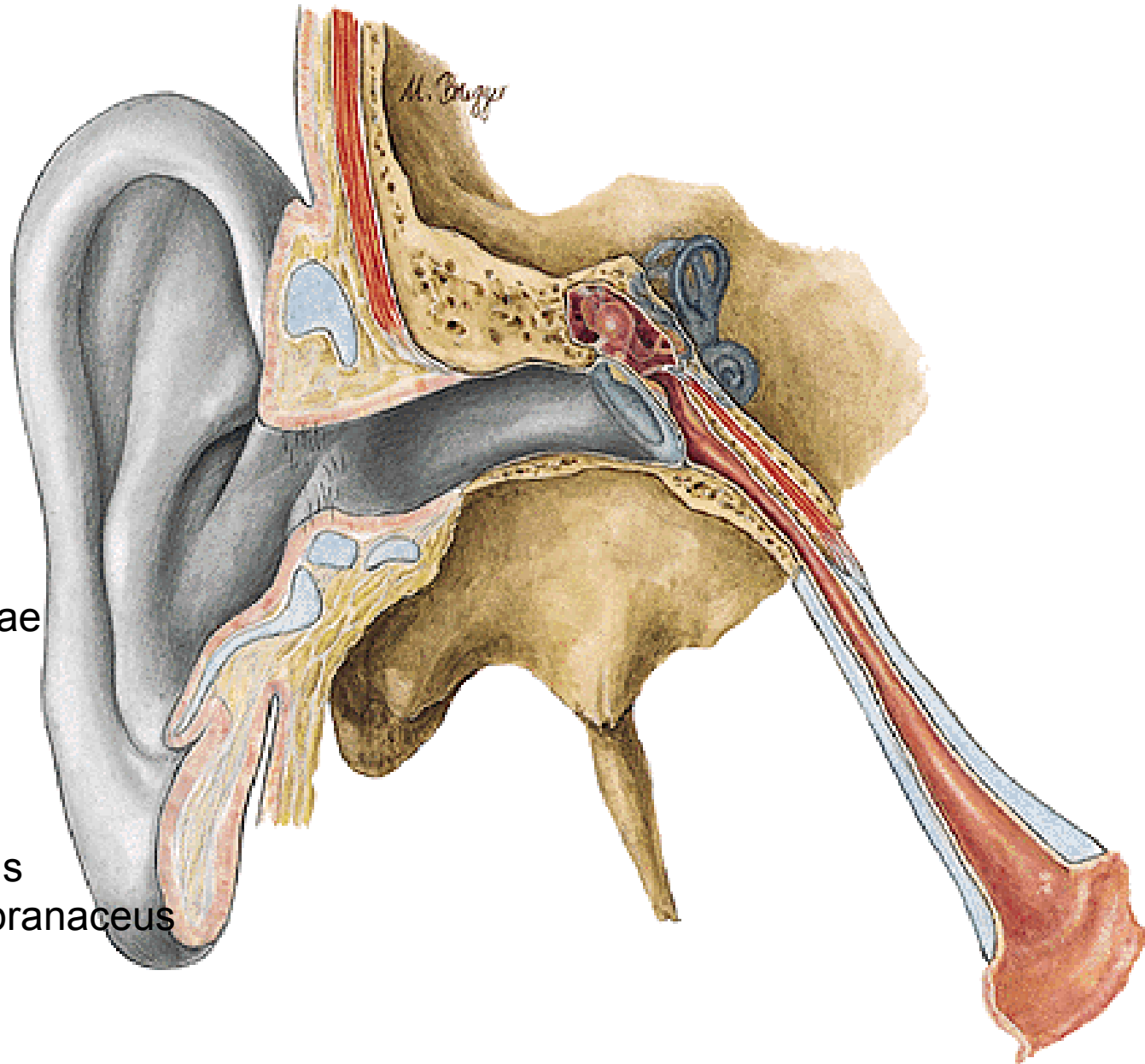
Auricula
Meatus acusticus
Membrana tympani

Auris media

Cavitas tympani
Ossicula auditus
Cellulae mastoideae
Tuba auditiva

Auris interna

Labyrinthus osseus
Labyrinthus membranaceus



AURICULA

HELIX - CRUS

TUBERCULUM AURICULAE

ANTHELIX

CRURA ANTHELICIA

FOSSA TRIANGULARIS

SCAPHA

CONCHA AURICULAE

- CYMBA CONCHAE

- CAVUM CONCHAE

TRAGUS

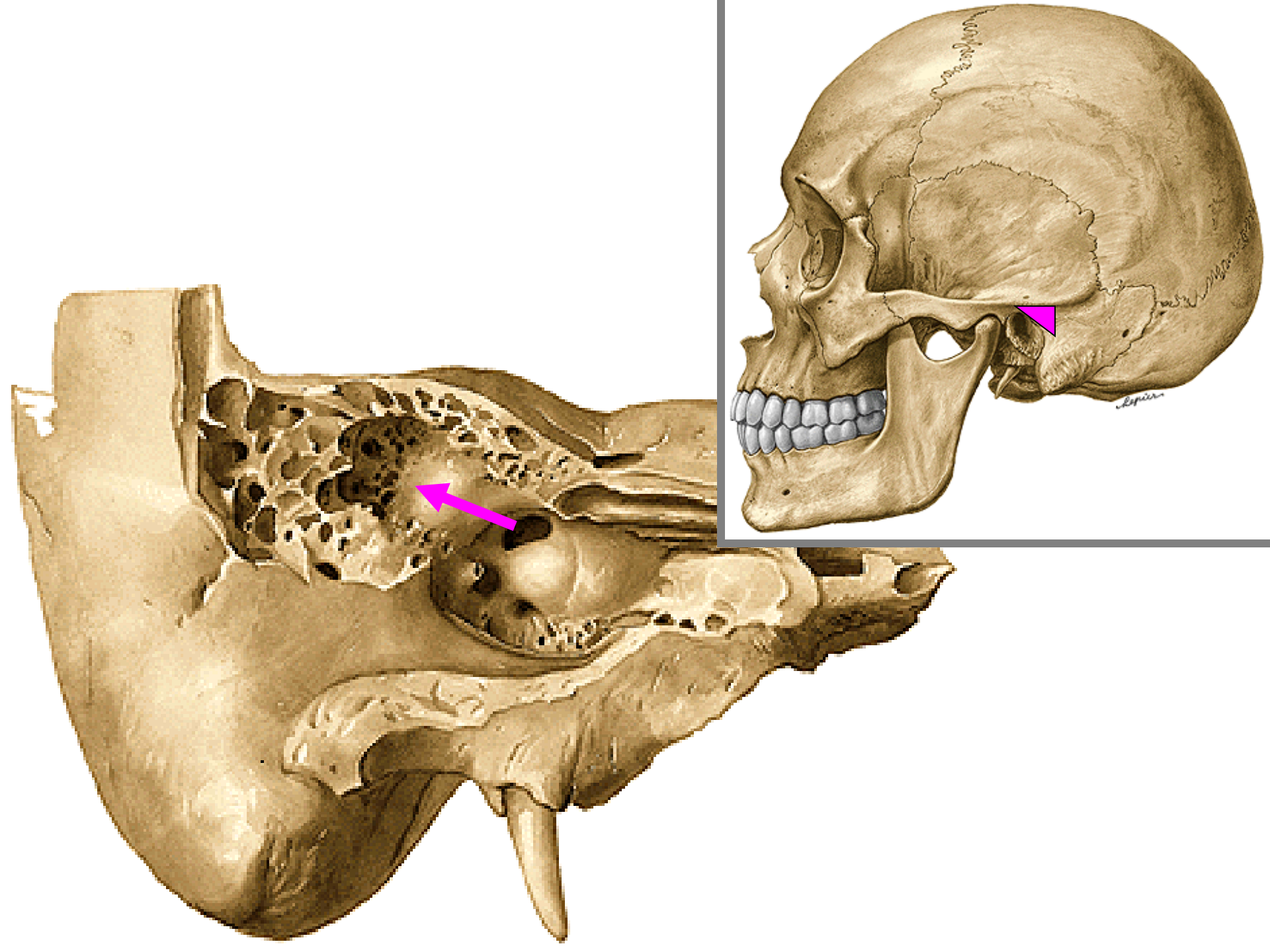
ANTITRAGUS

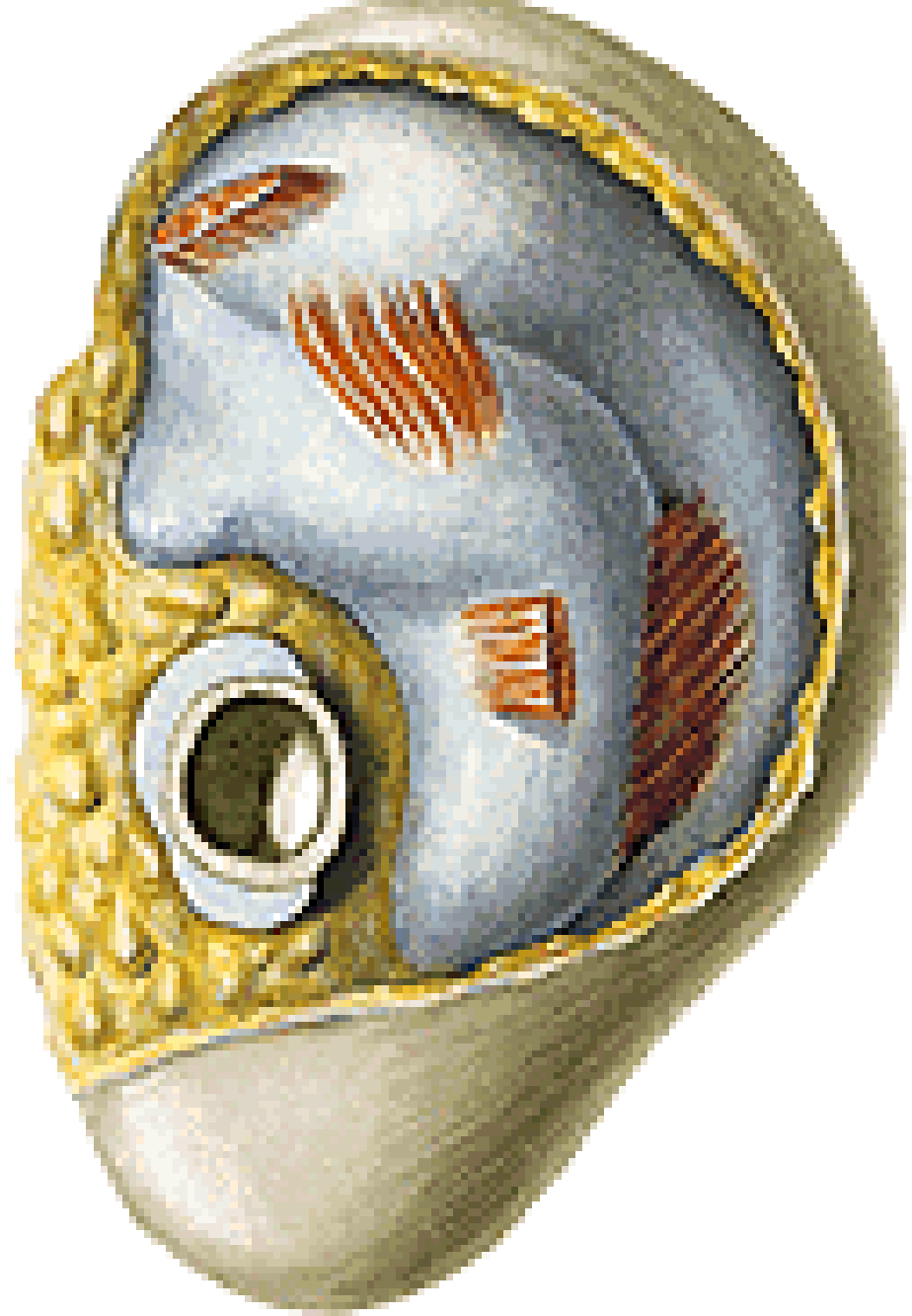
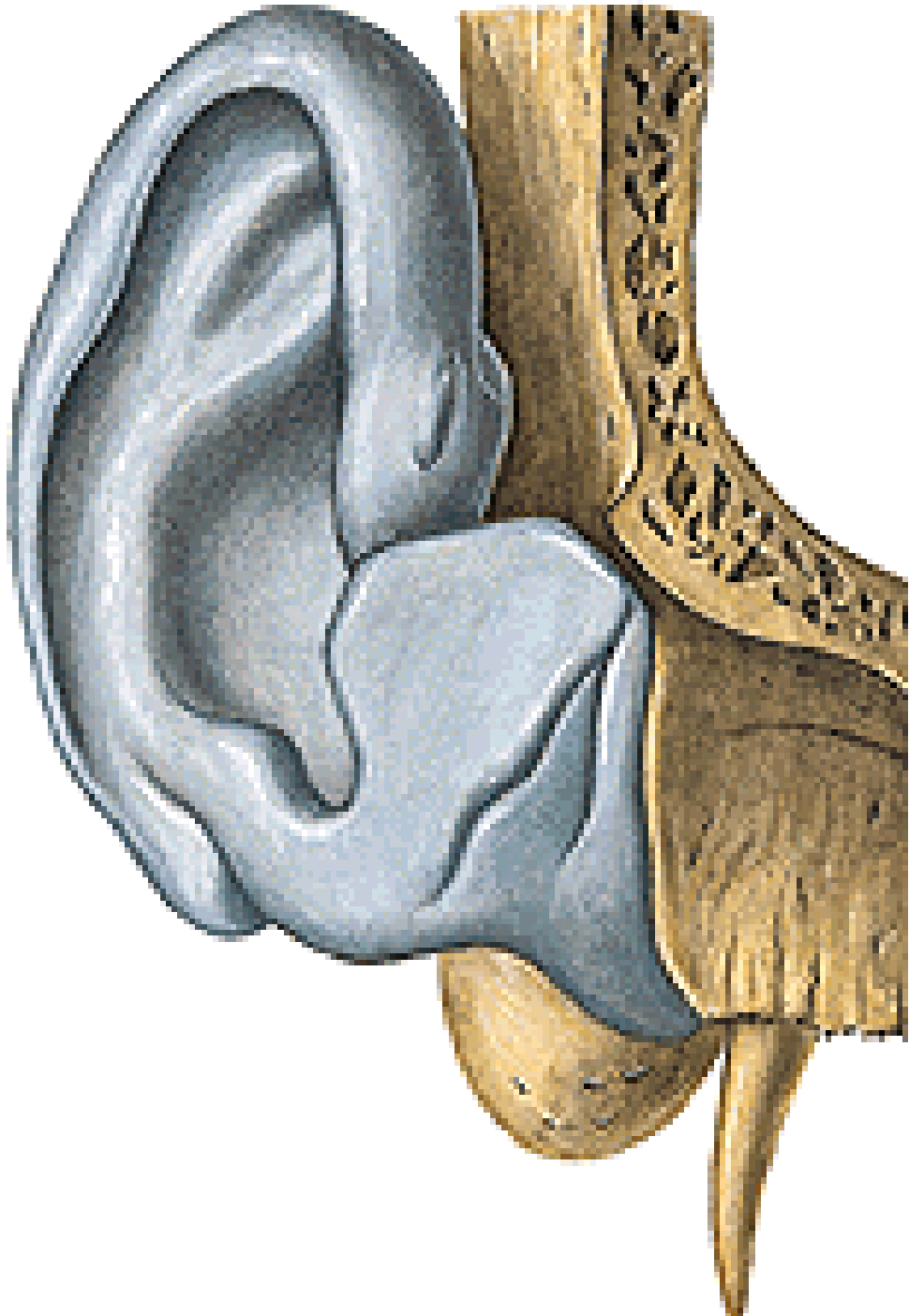
INCISURA INTERTRAGICA

LOBULUS AURICULAE

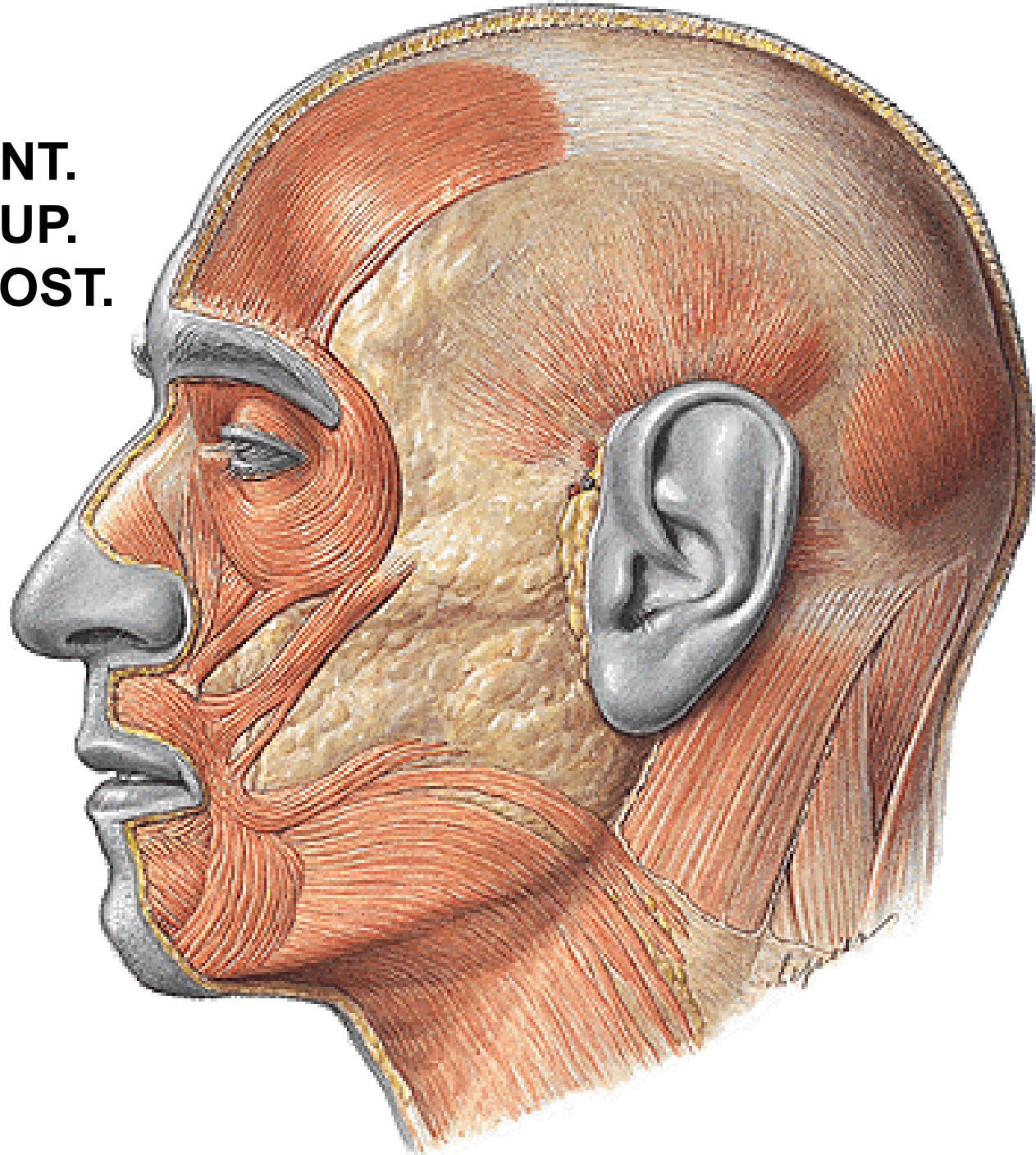


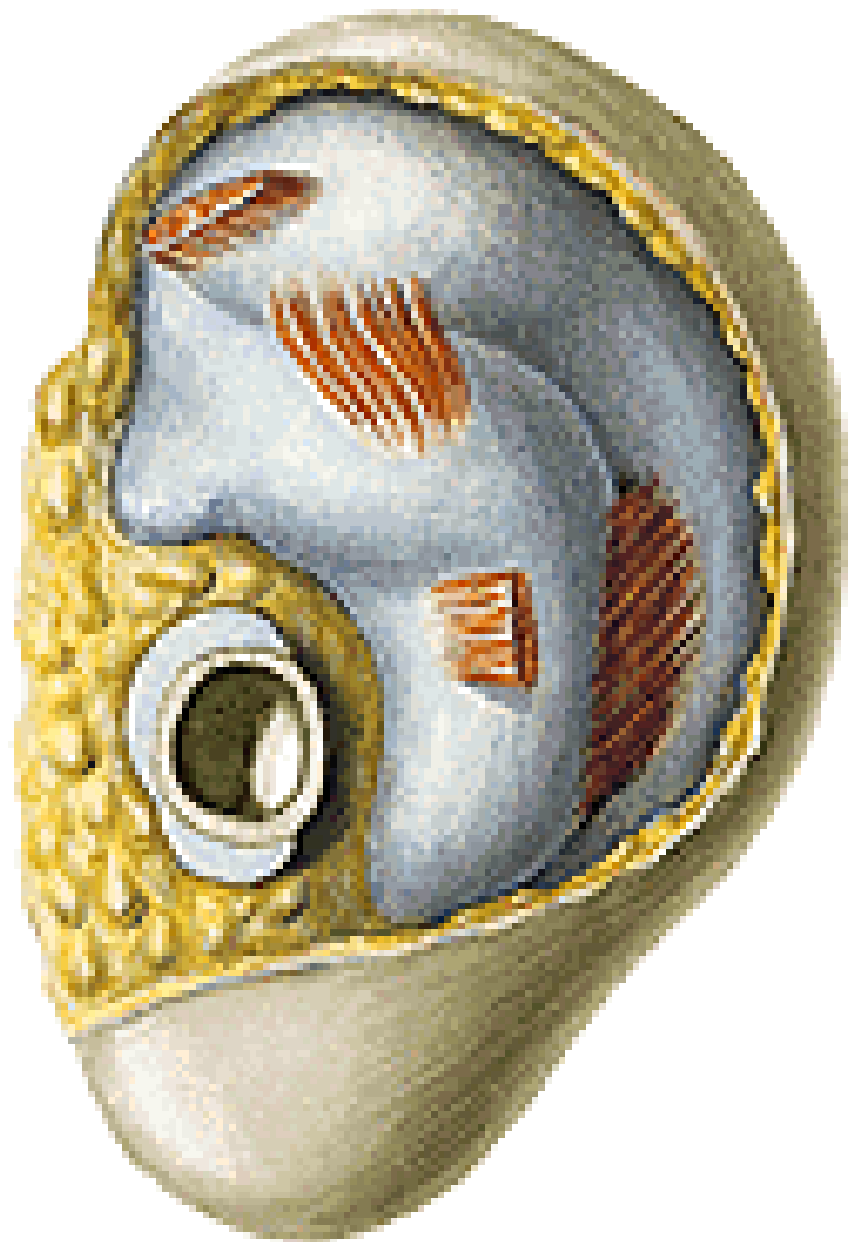
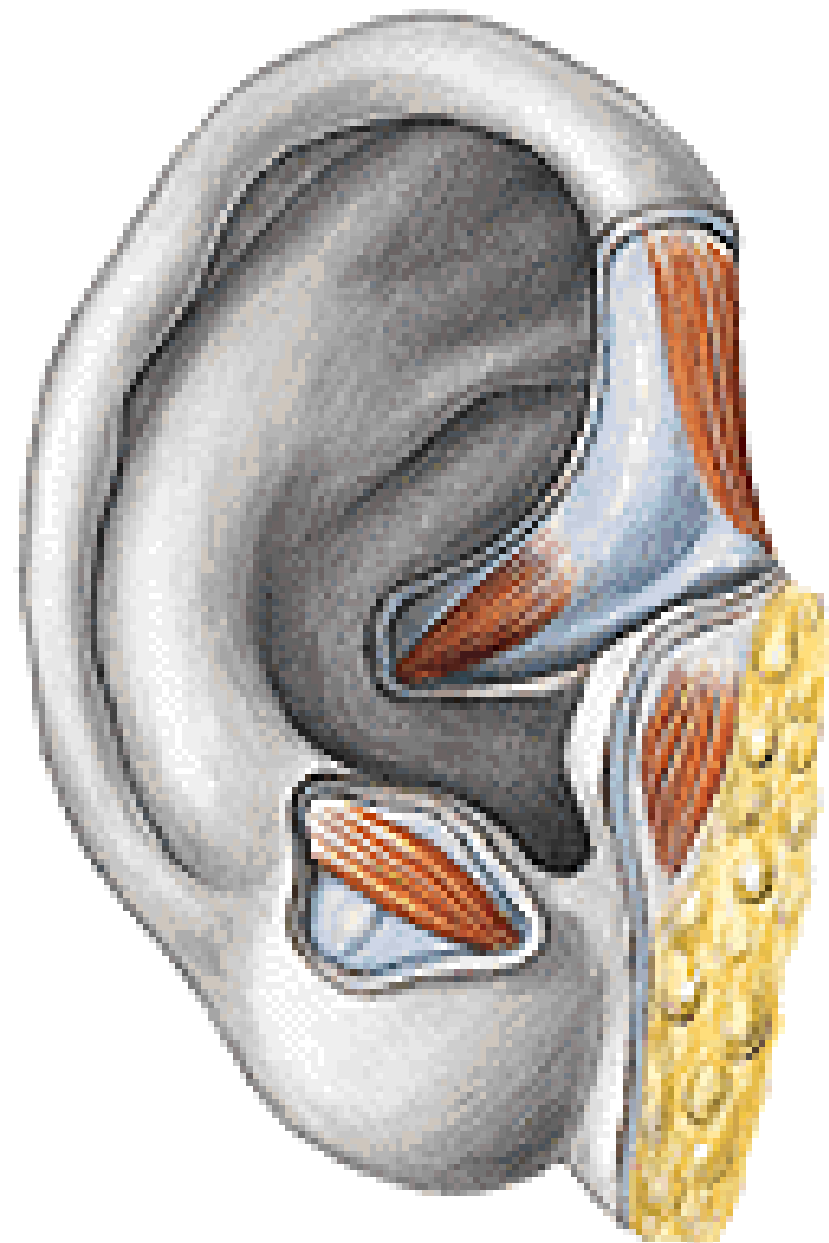






M. AURICULARIS ANT.
M. AURICULARIS SUP.
M. AURICULARIS POST.





AURICULA:

A. AURICULARIS POSTERIOR

RR. AURICULARES ANTERIORES A. TEMPORALIS SPF.

A. OCCIPITALIS

NODI LYMPH. PAROTIDEI

NODI LYMPH. MASTOIDEI

NODI LYMPH. CERVICALES PROFUNDI

N. AURICULARIS MAGNUS

N. OCCIPITALIS MINOR

R. AURICULARIS N. VAGI

N. AURICULOTEMPORALIS

N. FACIALIS

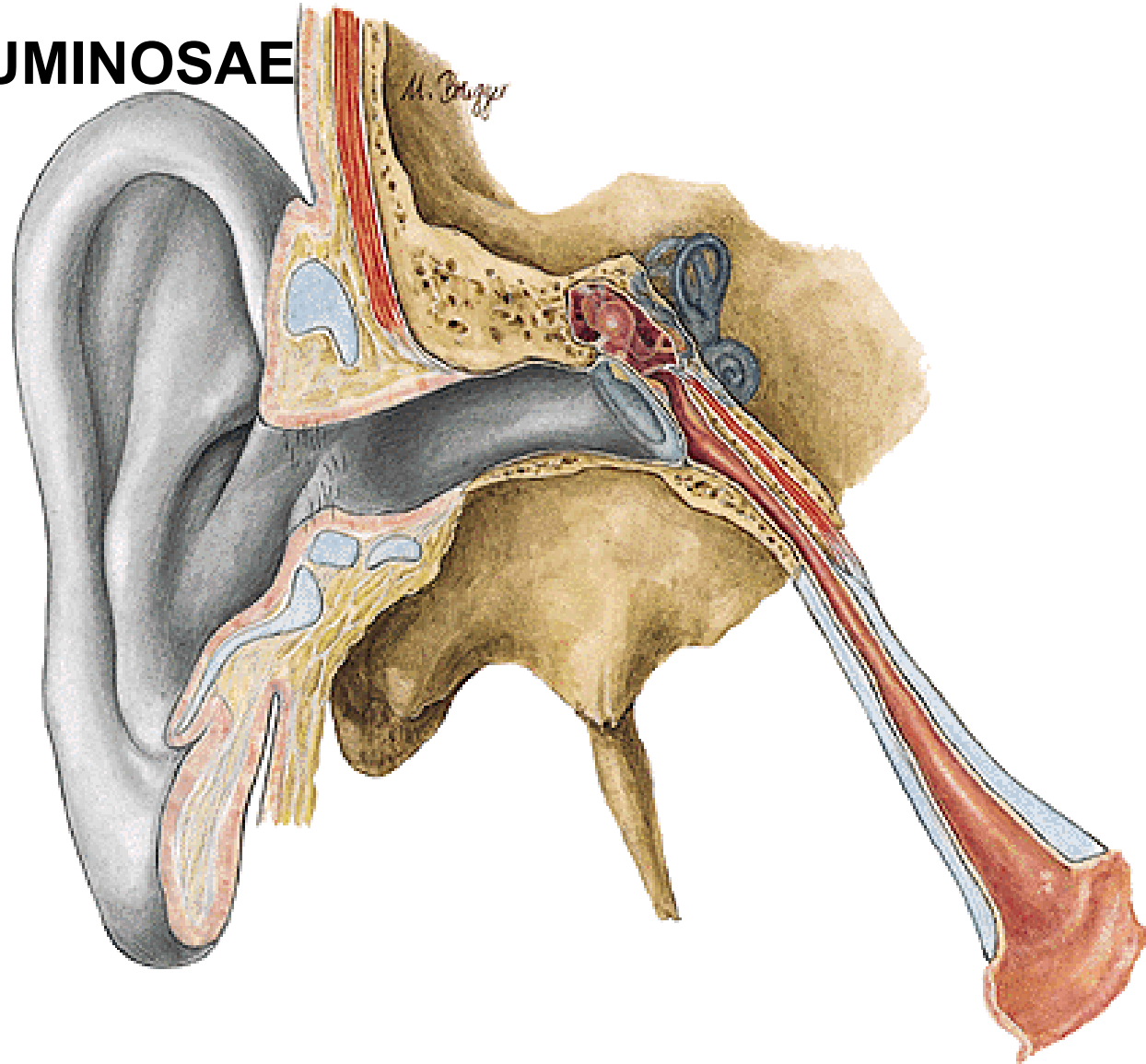
MEATUS ACUSTICUS EXTERNUS

ISTHMUS

GLANDULAE CERUMINOSAE

CERUMEN

TRAGI



MEATUS ACUSTICUS EXTERNUS:

A. AURICULARIS POST.

RR. AURICULARES A. TEMPORALIS SPF.

V. JUGULARIS EXT.

V. MAXILLARIS

PLEXUS PTERYGOIDEUS

NODI LYMPH. PAROTIDEI

NODI LYMPH. MASTOIDEI

NODI LYMPH. CERVICALES PROFUNDI

N. AURICULOTEMPORALIS

R. AURICULARIS N. VAGI

MEMBRANA TYMPANI

External Ear

Right Tympanic Membrane

pars flaccida membranae tympani (membrana Shrapnelli)

plica mallearis anterior et posterior

prominentia mallearis

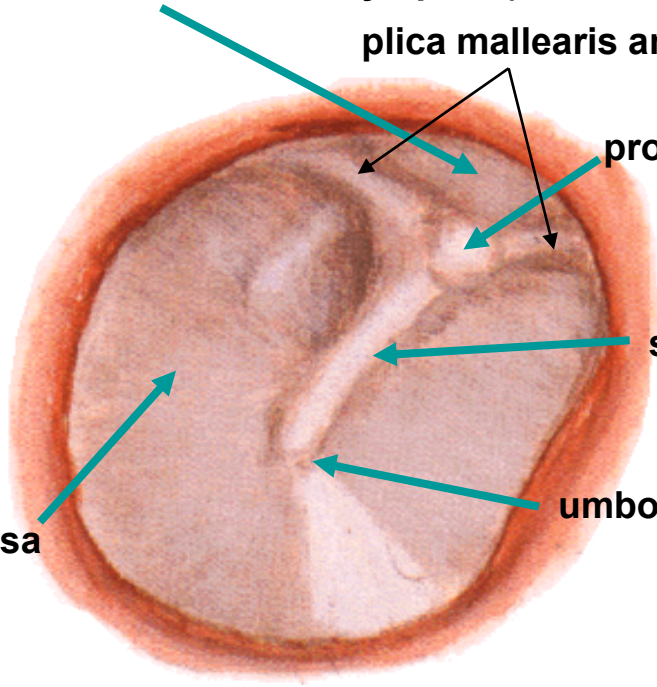
stria mallearis

umbo membranae tympani

pars tensa

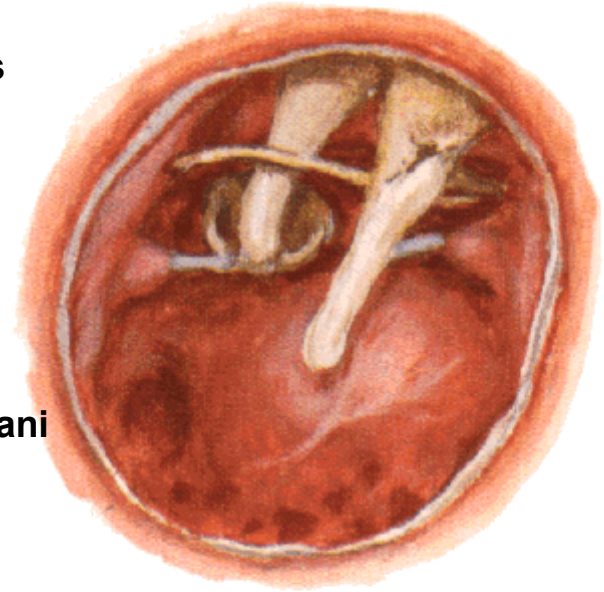
light reflex (trigonum Woodi)

Viewed through speculum

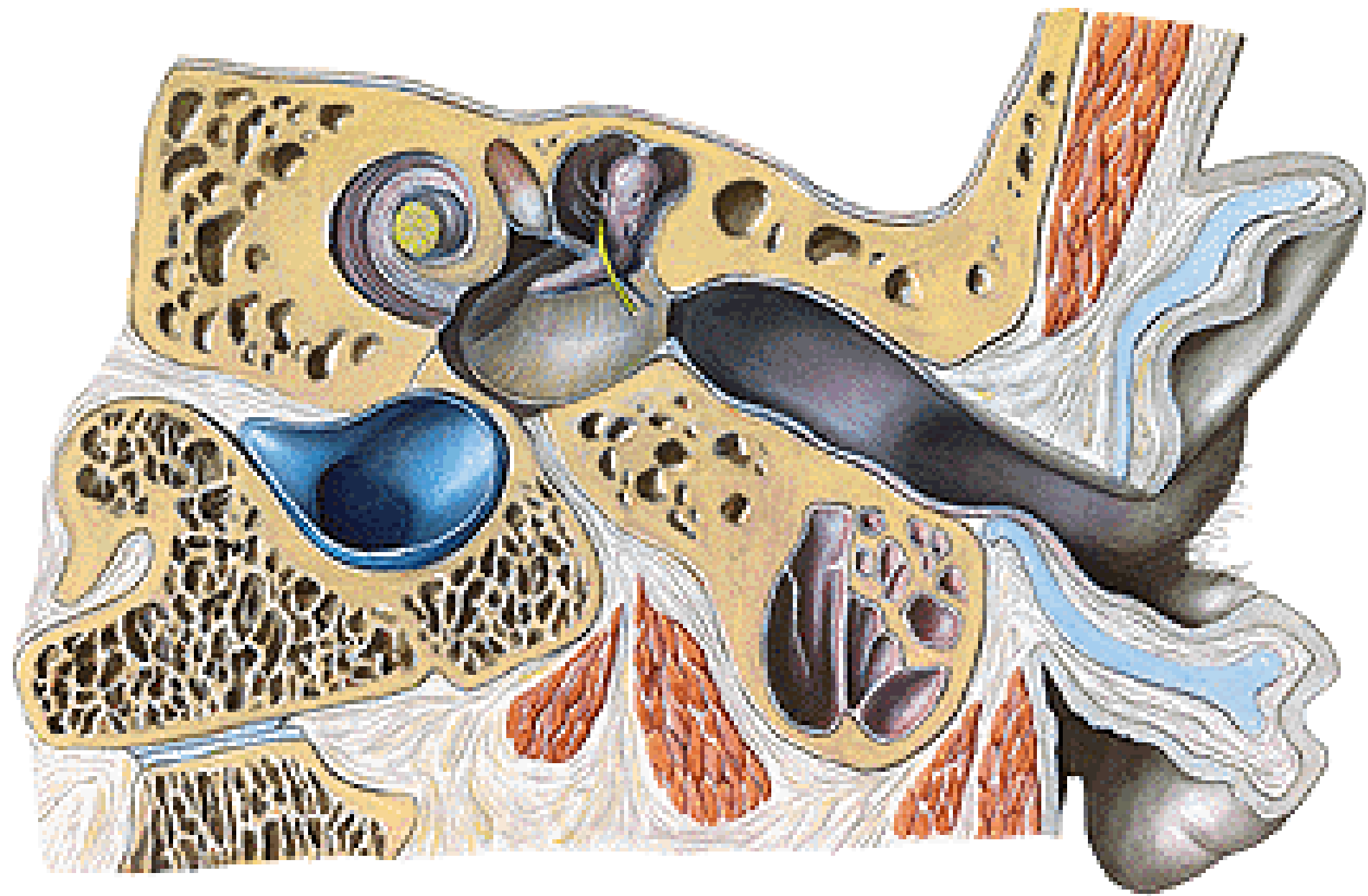


Tympanic Cavity

Viewed from External Acoustic Meatus



Tympanic Membrane Removed



MEMBRANA TYMPANI:

A. MAXILLARIS

A. OCCIPITALIS

A. AURICULARIS POST.

V. JUGULARIS EXT.

SINUS DURAE MATRIS

PLEXUS TUBAE AUDITIVAE

N. AURICULOTEMPORALIS

R. AURICULARIS N. VAGI

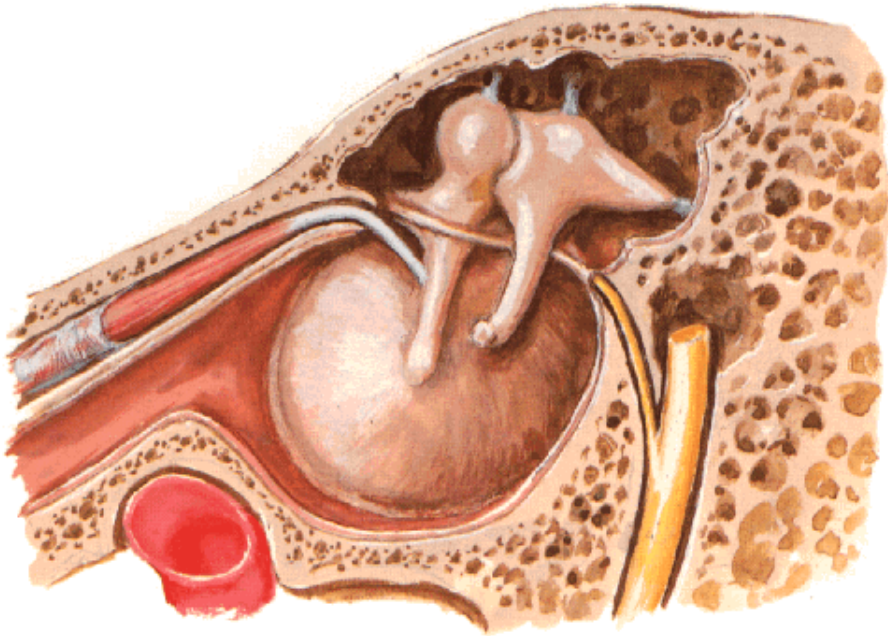
N. TYMPANICUS N. GLOSSOPHARYNGEI

N. FACIALIS

CAVUM TYMPANI

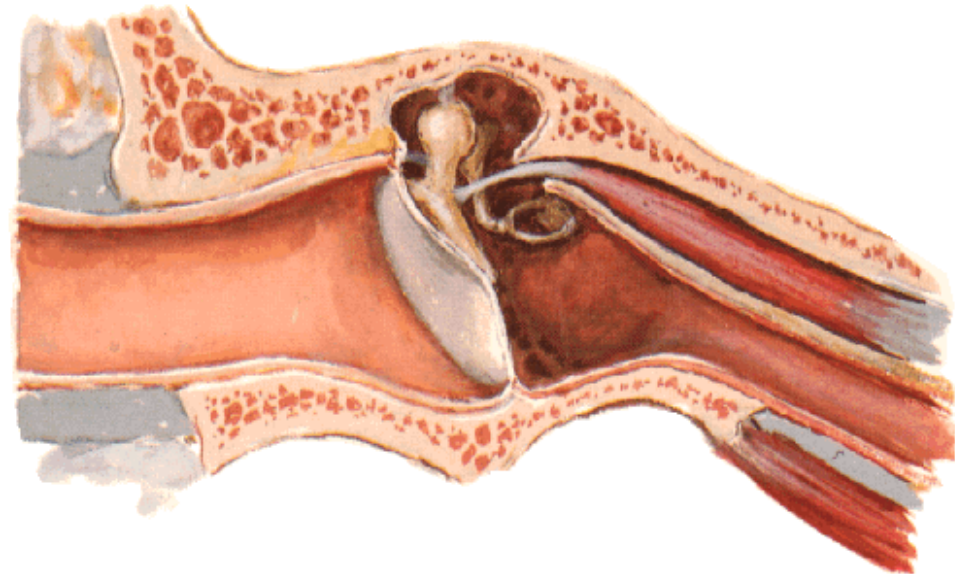
- cavum tympani proprium
- recessus epitympanicus

Tympanic Cavity - Lateral Wall
Medial View

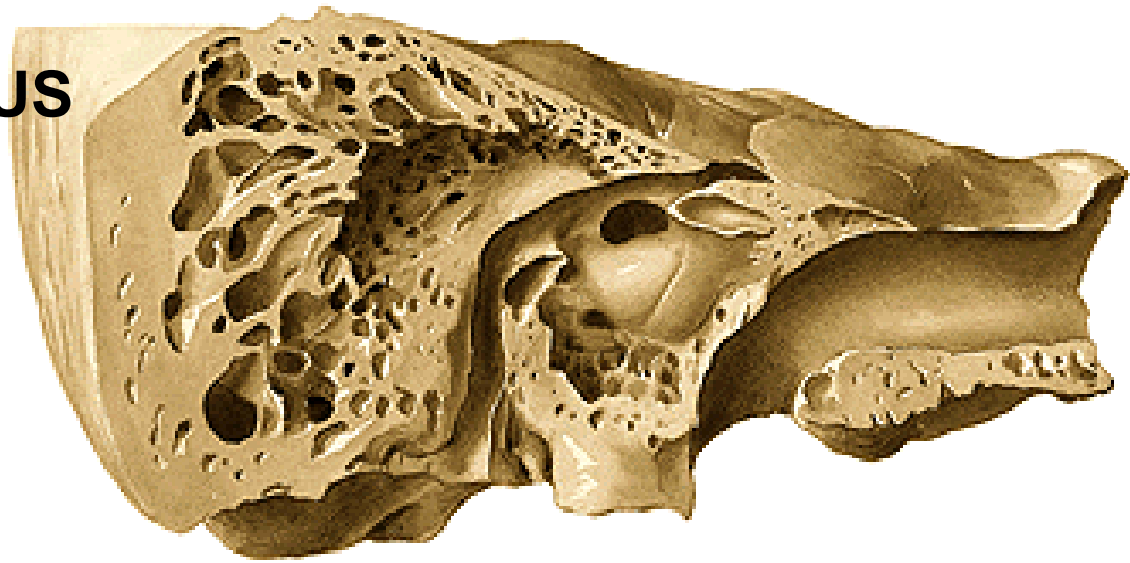


- Paries tegmentalis**
- Paries jugularis**
- Paries caroticus**
- Paries mastoideus**
- Paries labyrinthicus**
- Paries membranaceus**

External Ear and Tympanic Cavity
Coronal Oblique Section



PARIES LABYRINTHICUS



PROMONTORY

FENESTRA VESTIBULI

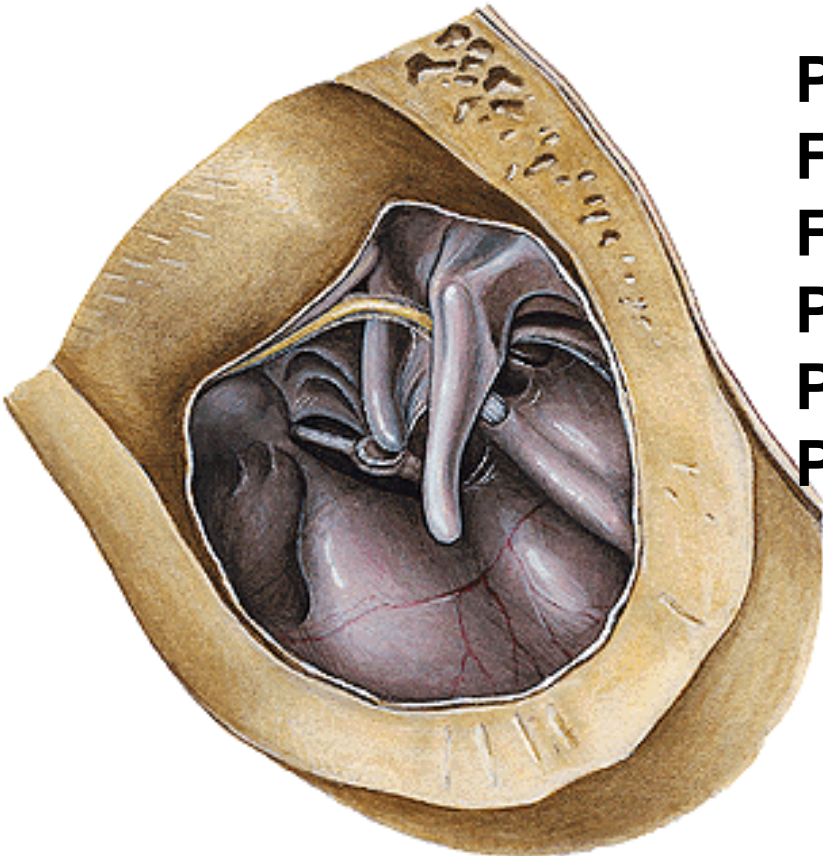
FENESTRA COCHLEAE

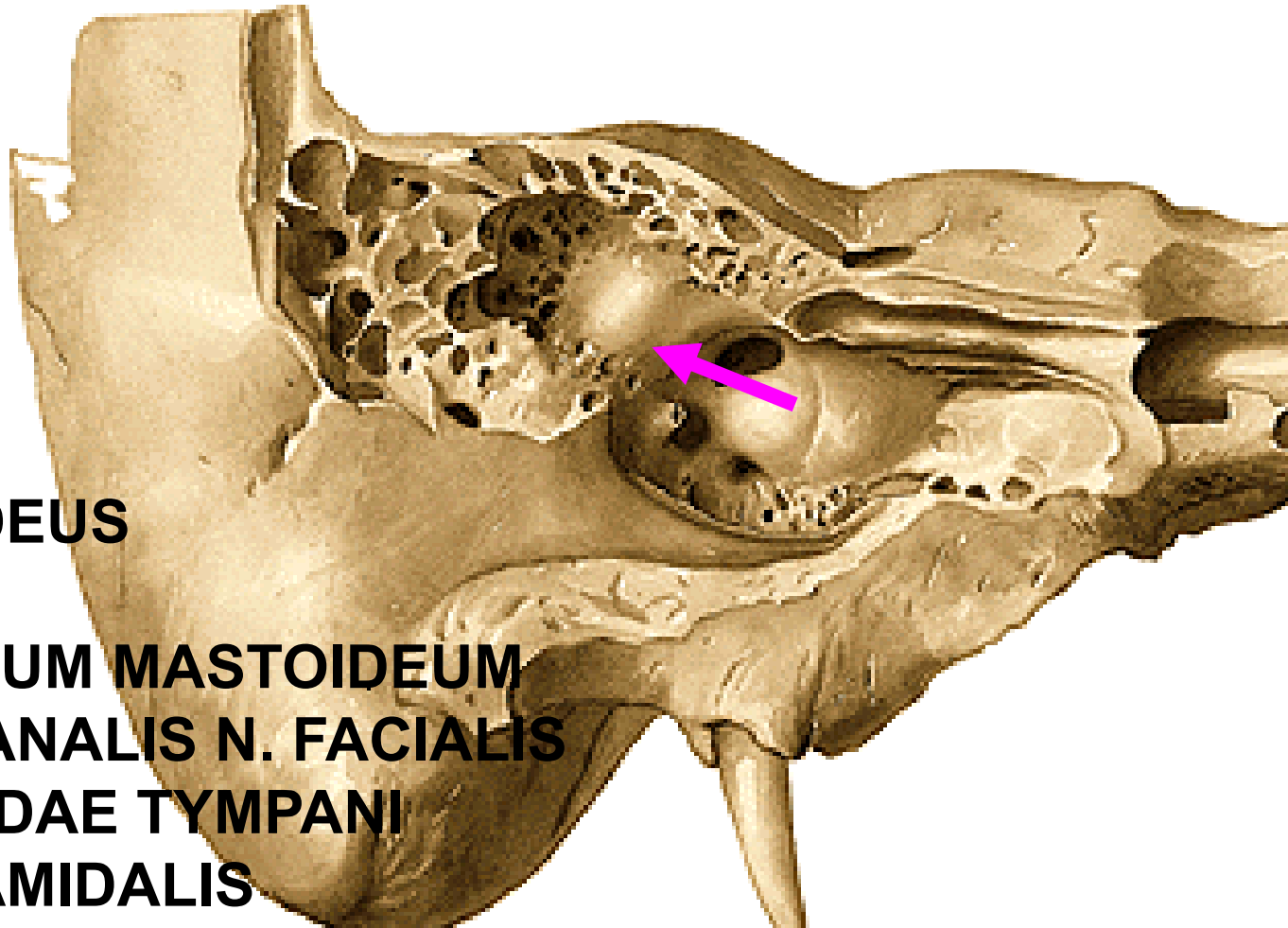
PROCESSUS COCHLEARIFORMIS

PROMINENTIA CANALIS FACIALIS

PROMINENTIA CANALIS

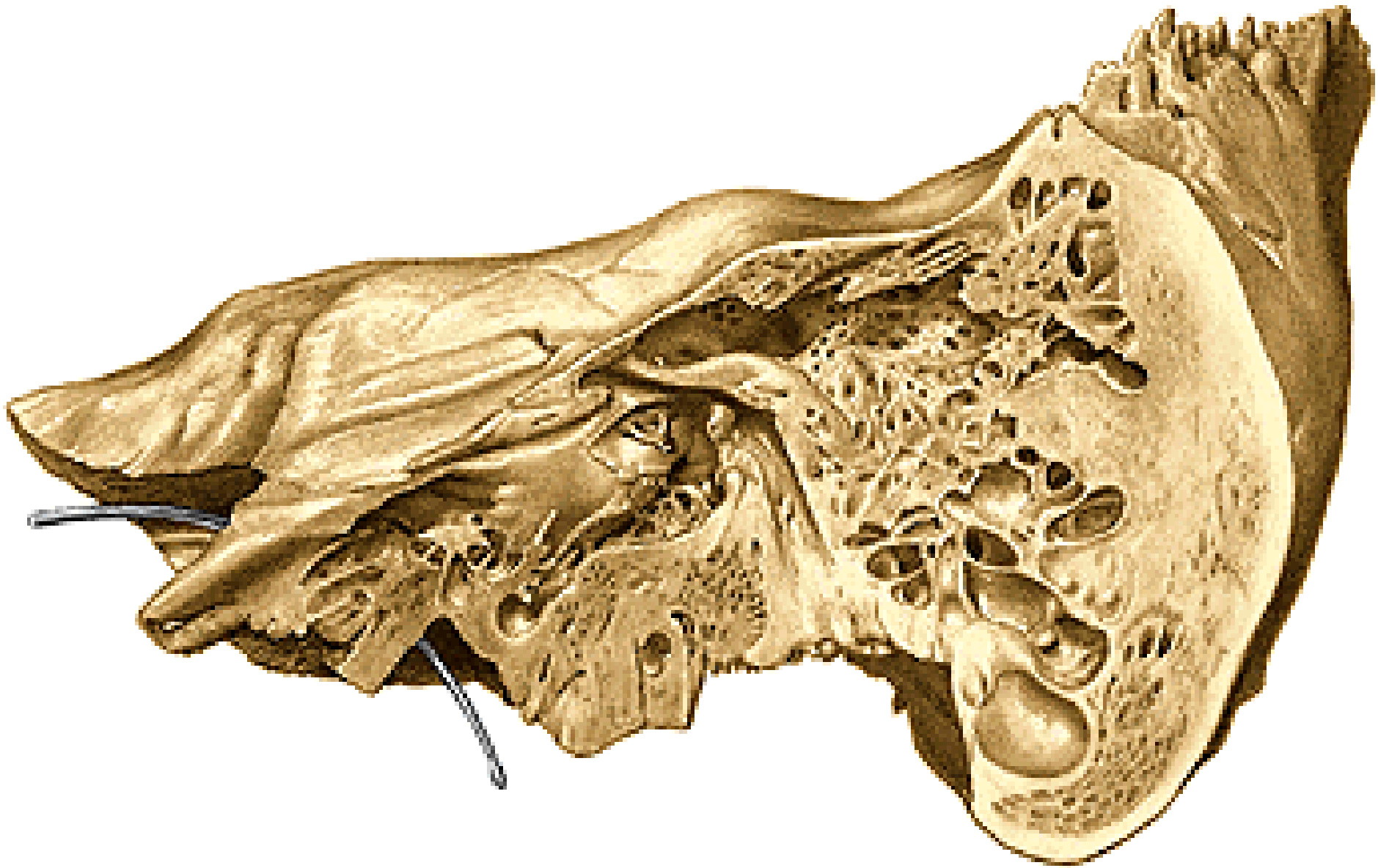
SEMICIRCULARS LATERALIS





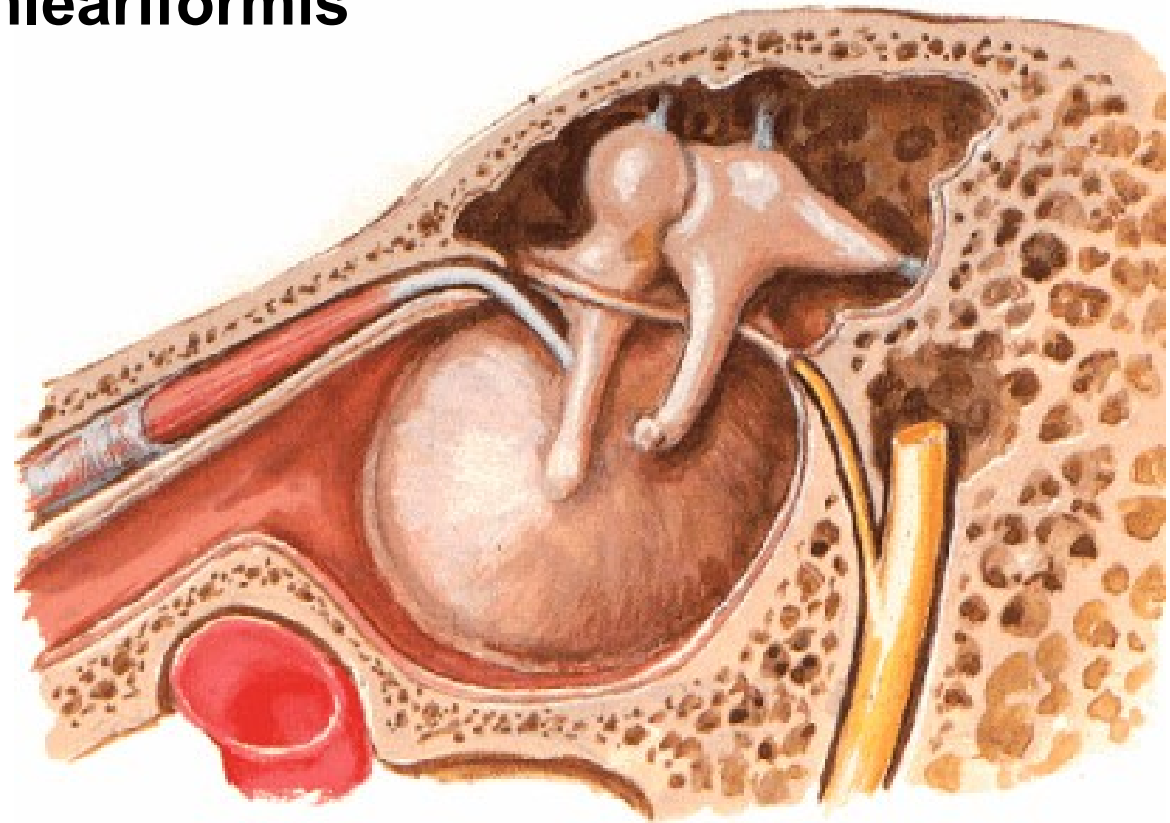
PARIES MASTOIDEUS

ADITUS AD ANTRUM MASTOIDEUM
PROMINENTIA CANALIS N. FACIALIS
FORAMEN CHORDAE TYMPANI
EMINENTIA PYRAMIDALIS



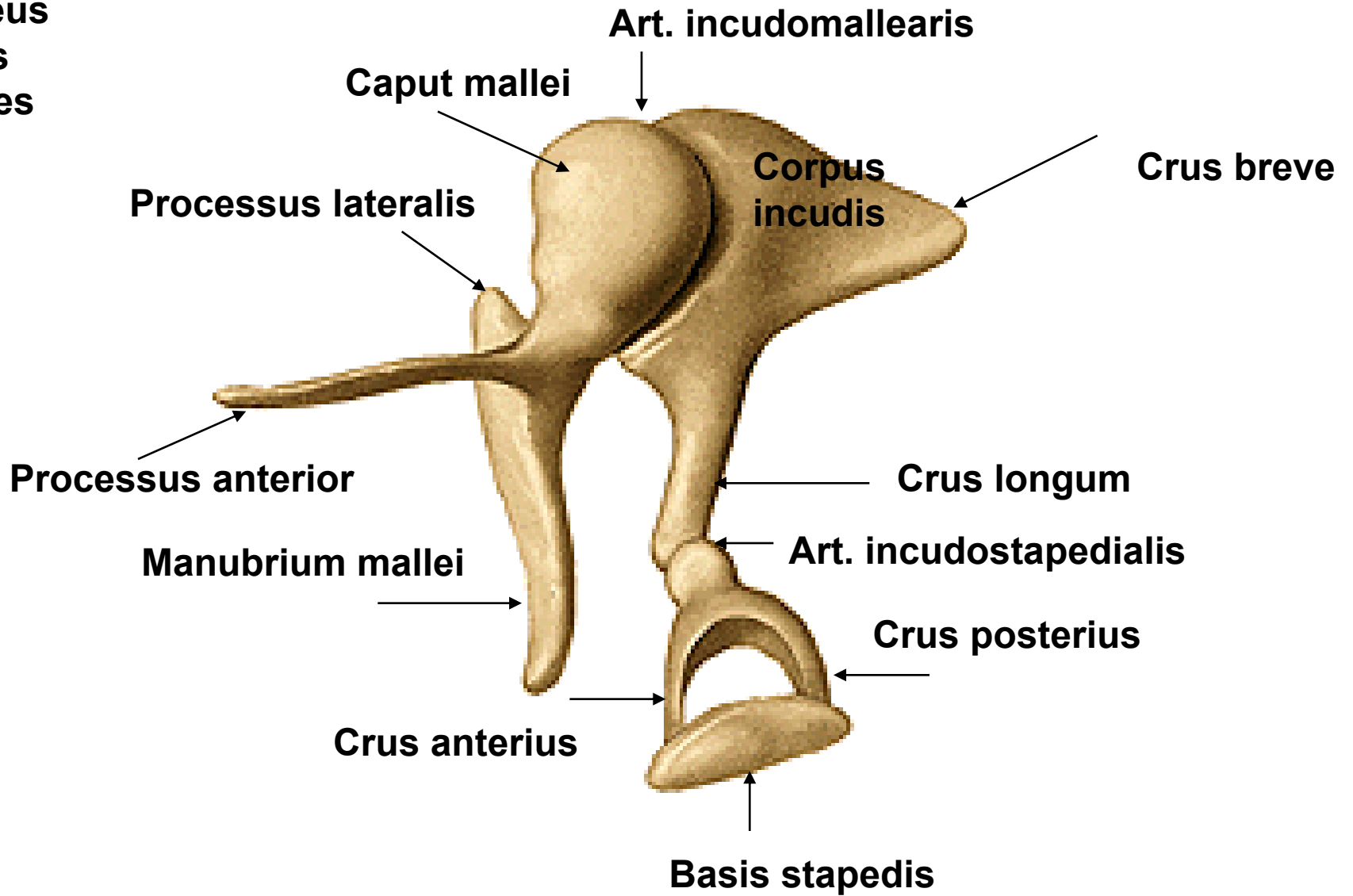
Paries caroticus:

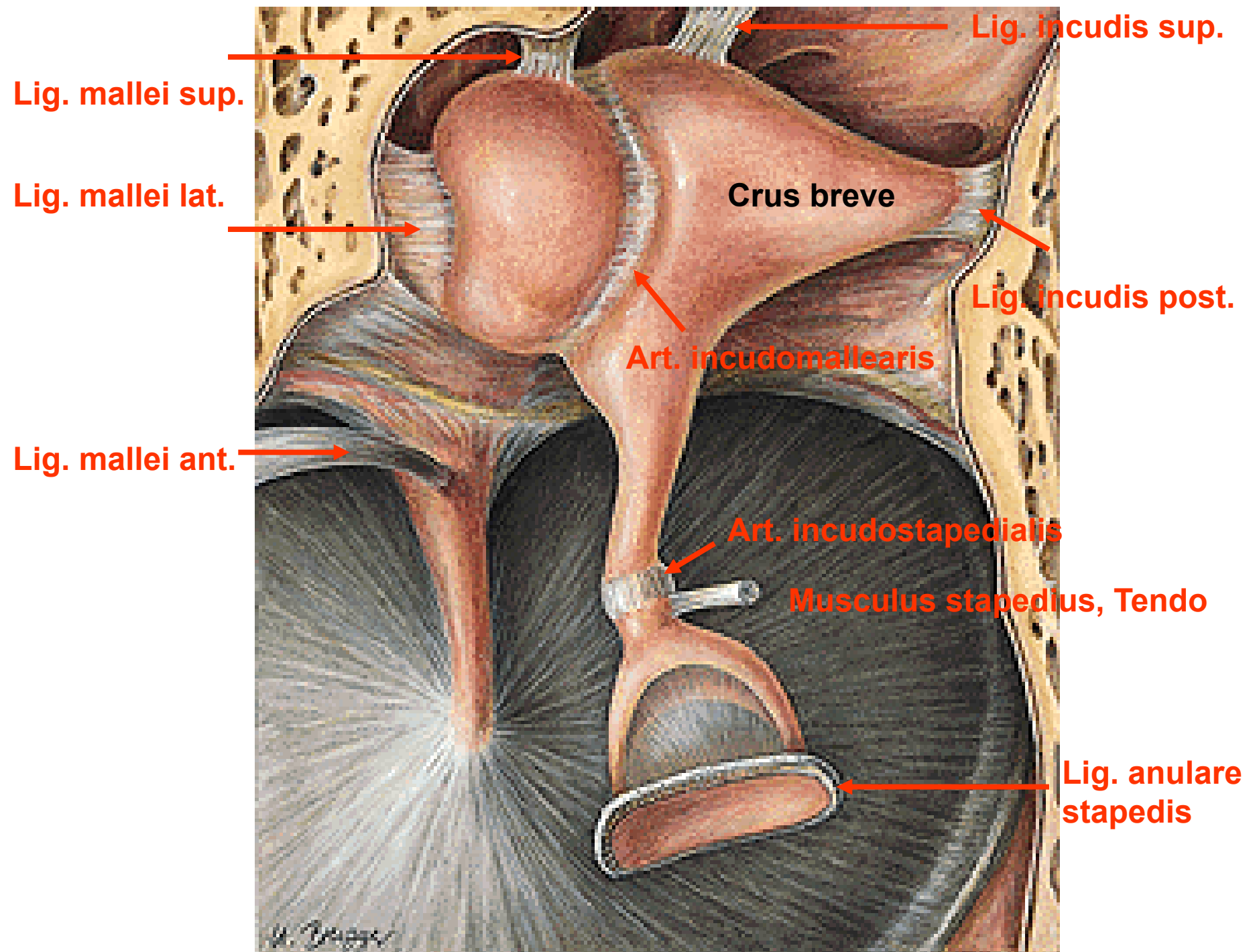
- **nn. caroticotympanici**
- **canalis musculotubarius – semicanalis m. tensoris tymp.**
 - **semicanalis tubae auditivae**
- **processus cochleariformis**

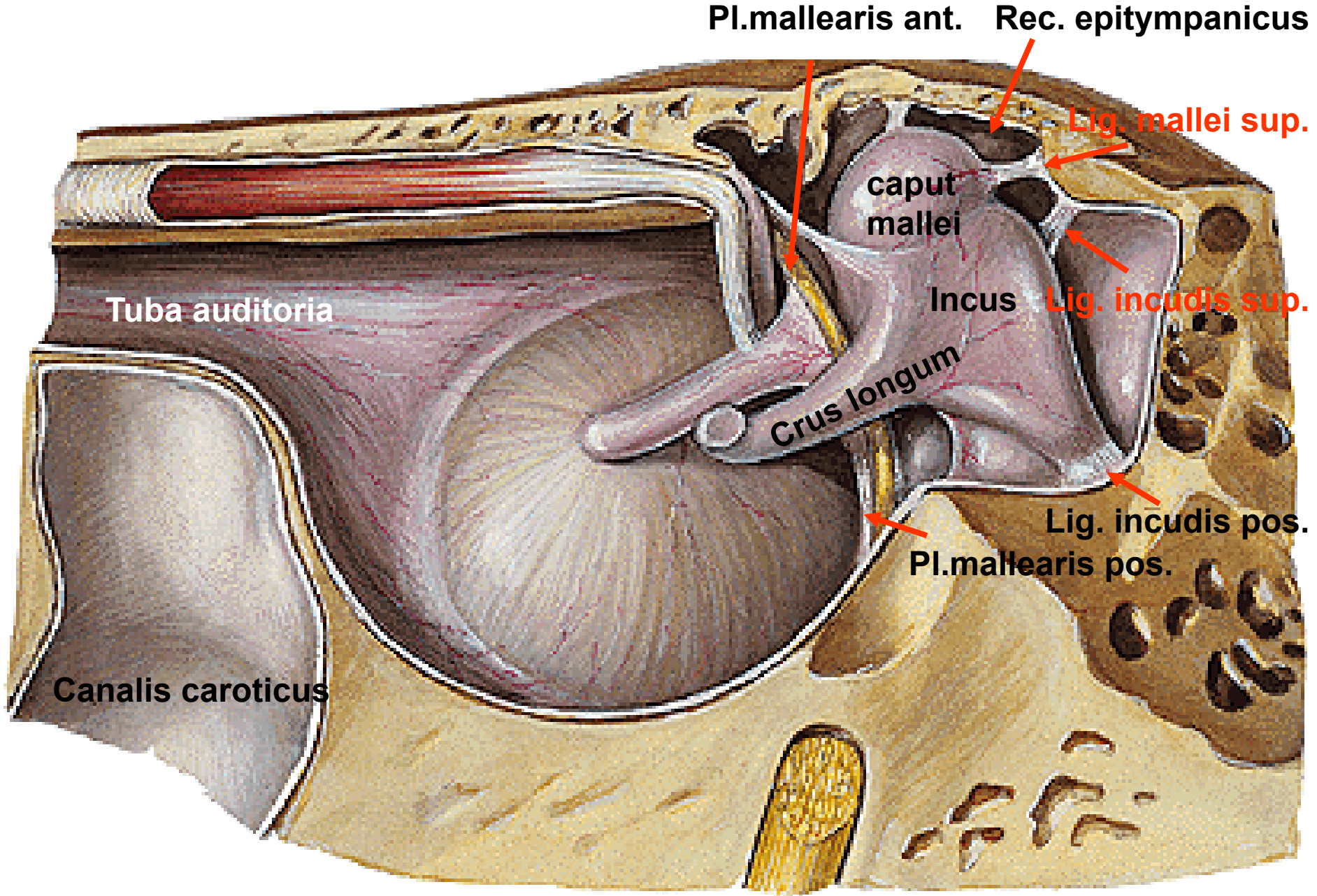


OSSICULA AUDITUS:

Malleus
Incus
Stapes







Pl.mallearis ant. Rec. epitympanicus

Lig. mallei sup.

caput mallei

Incus

Lig. incudis sup.

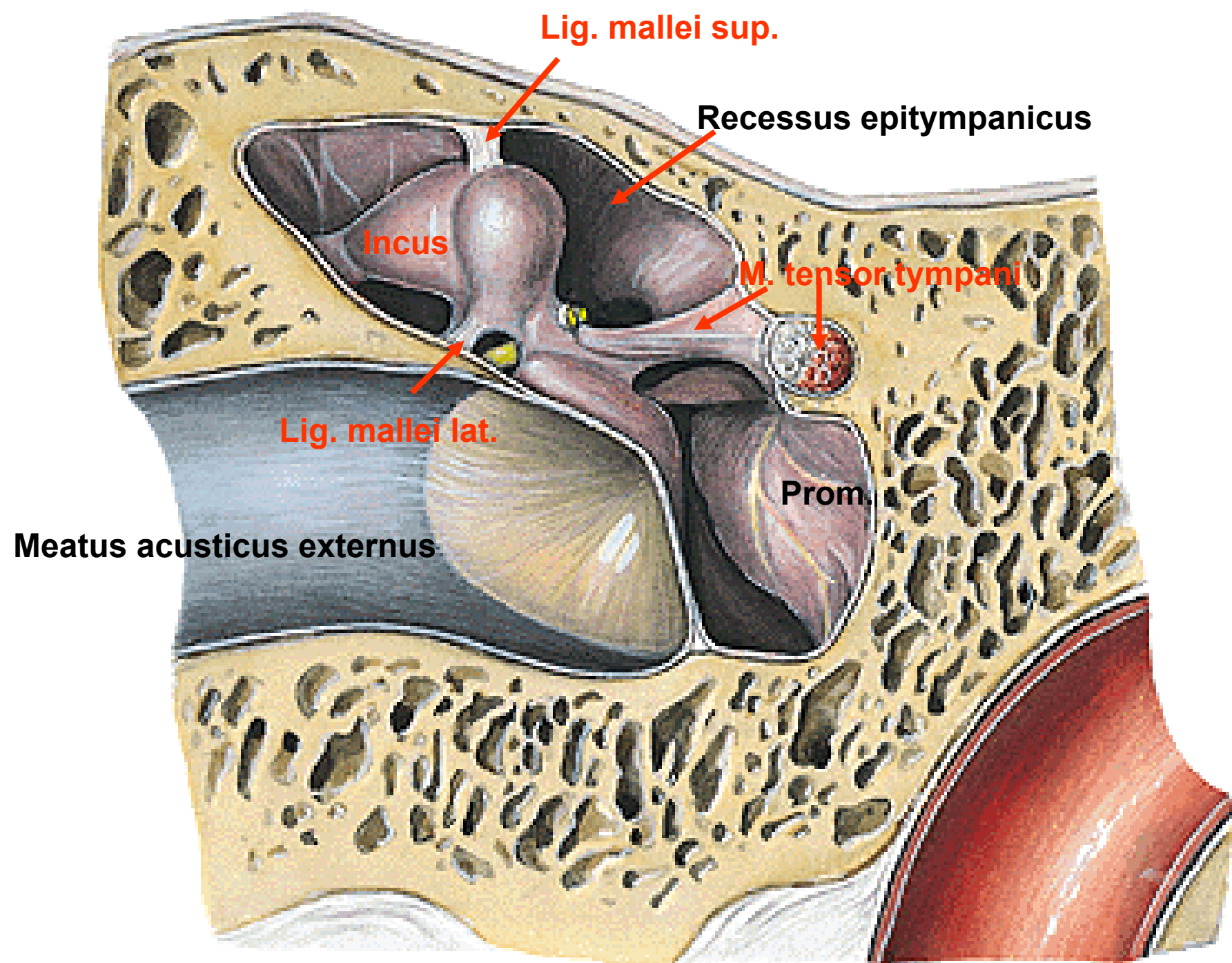
Crus longum

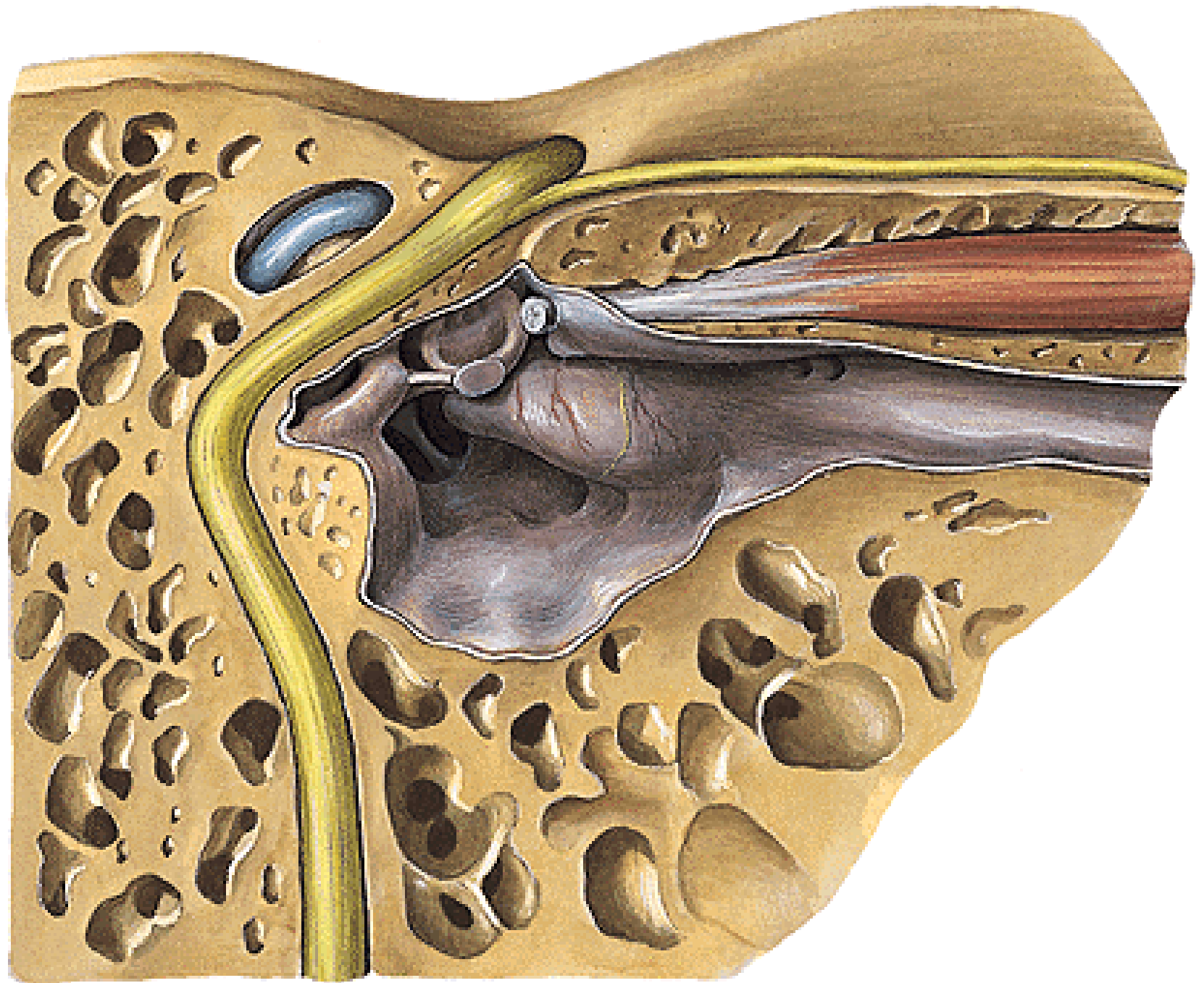
Lig. incudis pos.

Pl.mallearis pos.

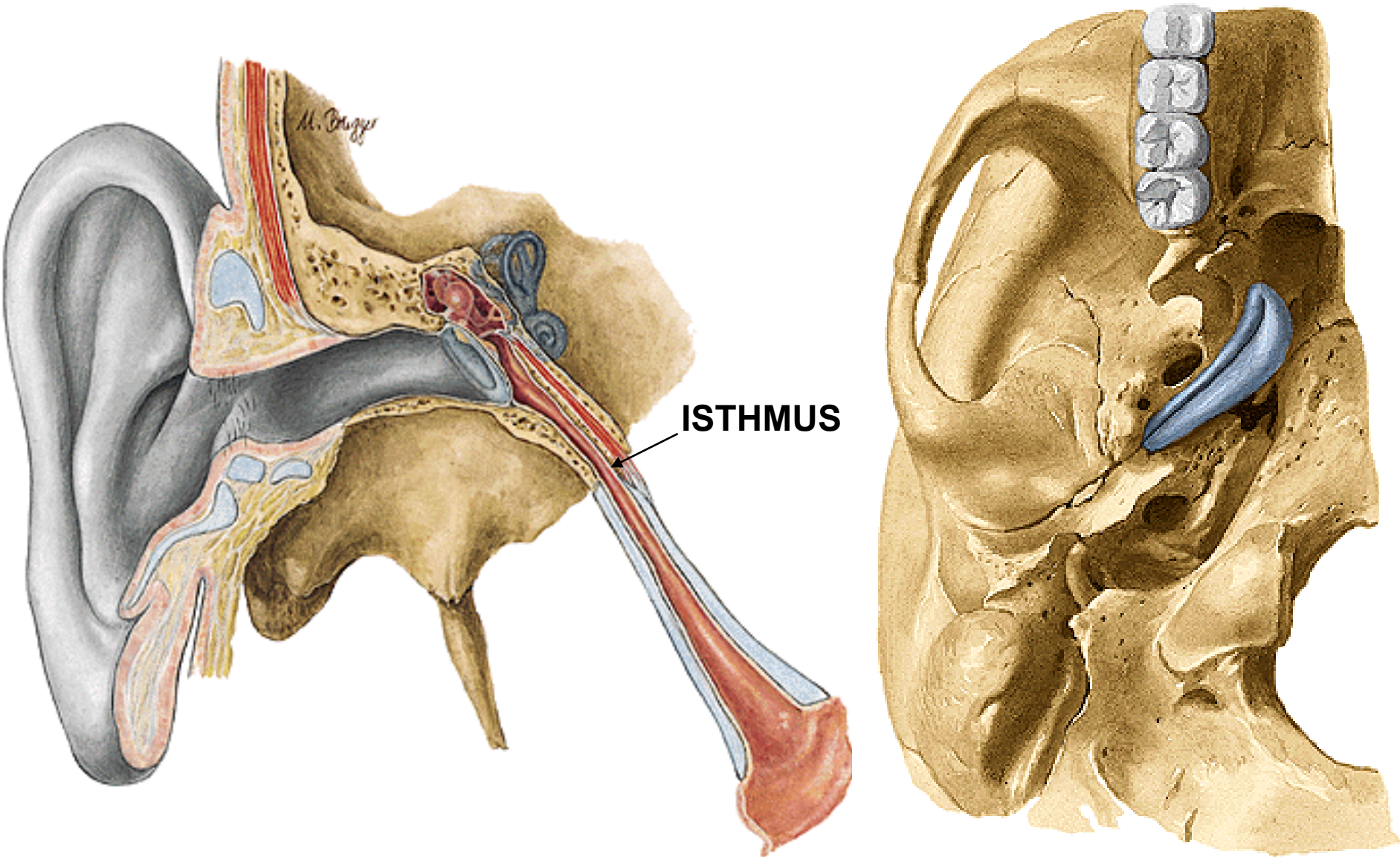
Tuba auditoria

Canalis caroticus





TUBA AUDITIVA (PHARYNGOTYMPANICA)



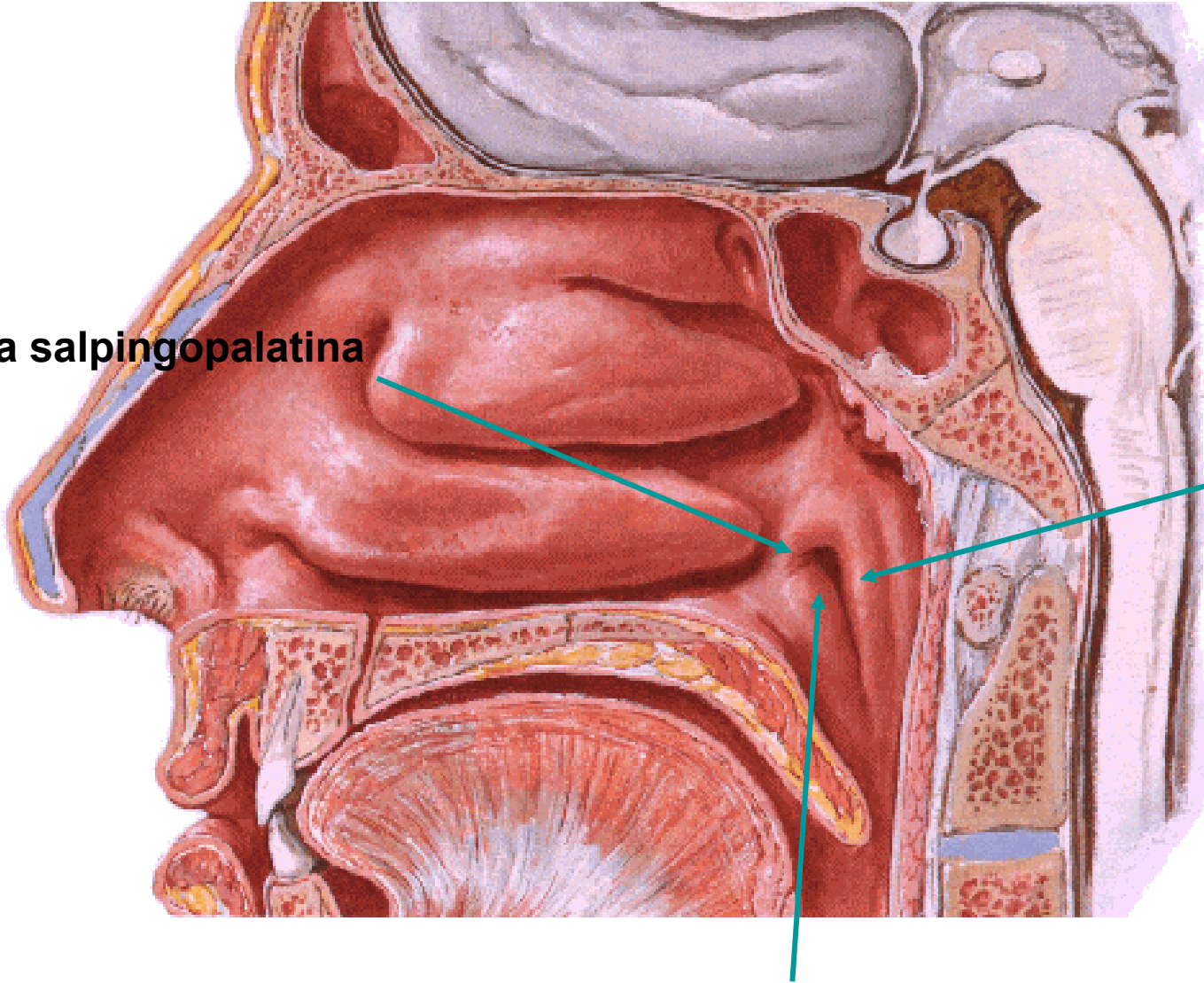
OSTIUM PHARYNGEUM TUBAE AUDITIVAE

Plica salpingopalatina

Torus tubarius

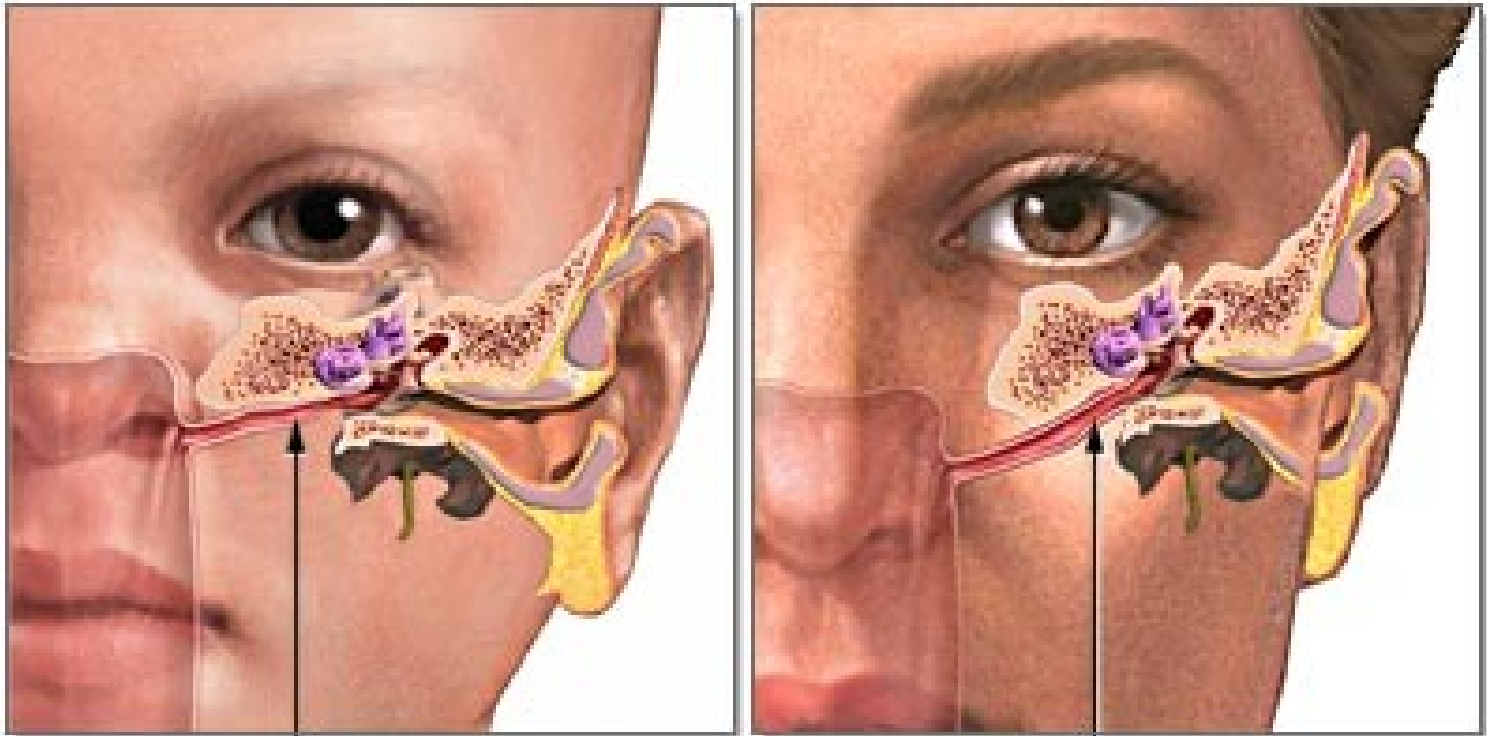
Tonsila tubaria

Torus levatorius



Infant

Adult



Eustachian tube

CAVUM TYMPANI:

A. TYMPANICA ANT. (A. MAXILLARIS) fissura petrotympanica

A. TYMPANICA POST. (A. AURICULARIS POST.) foramen stylomastoideum, canaliculus chordae

A. TYMPANICA SUP. (A. MENINGEA MEDIA) tegmen tympani

A. TYMPANICA INF. (A. PHARYNGEA ASC.) canaliculus tympanicus

TUBA AUDITIVA:

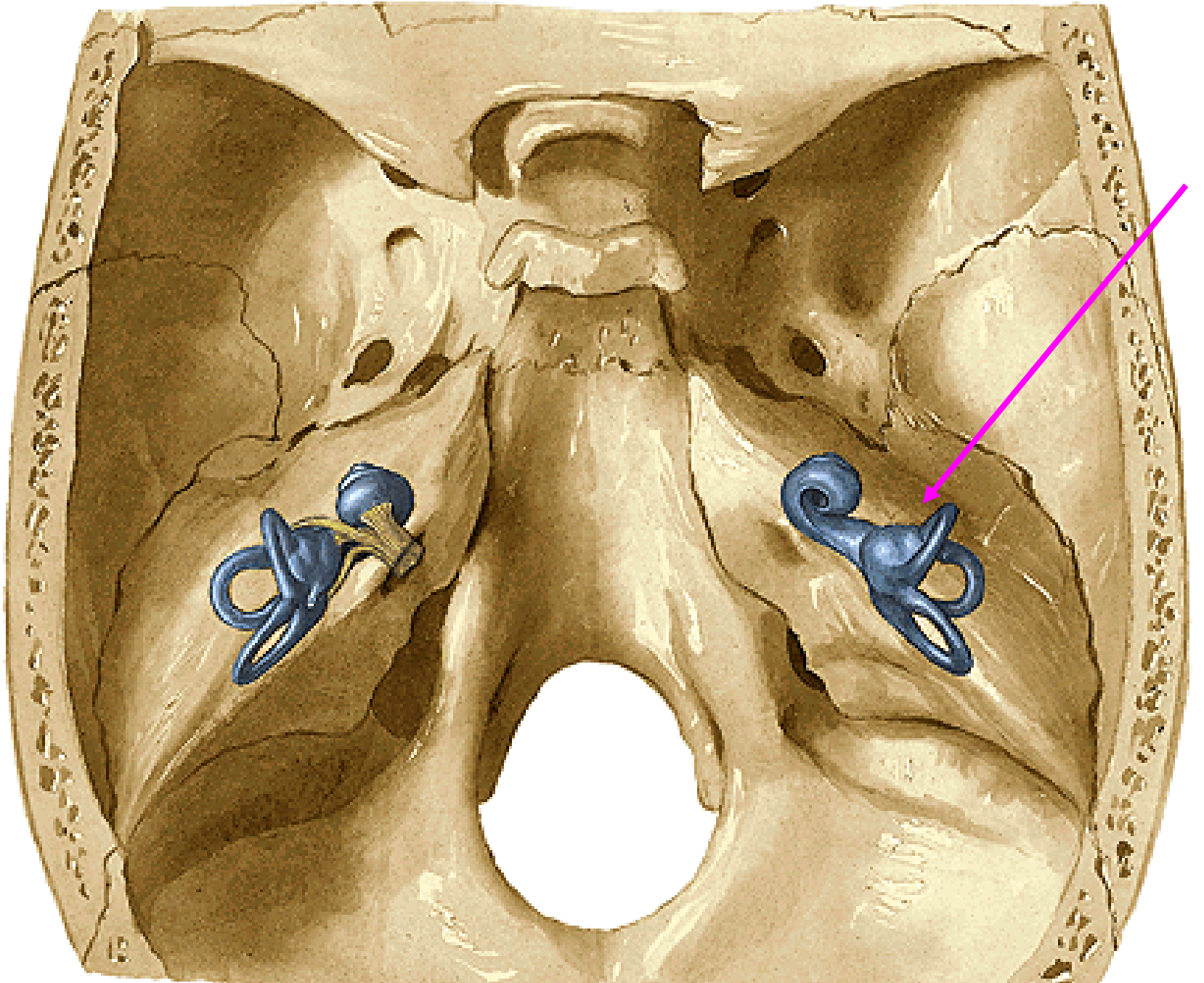
A. PHARYNGEA ASC., A. MENINGEA MEDIA, A. CANALIS PTERYGOIDEI)

VEINS: PLEXUS PTERYGOIDEUS, SINUS PETROSUS SUP.

LYMPH: NLL. CERVICALES PROF.

PLEXUS TYMPANICUS (CN VII, IX and NN. CAROTICO-TYMPANICI, CHORDA TYMPANI)

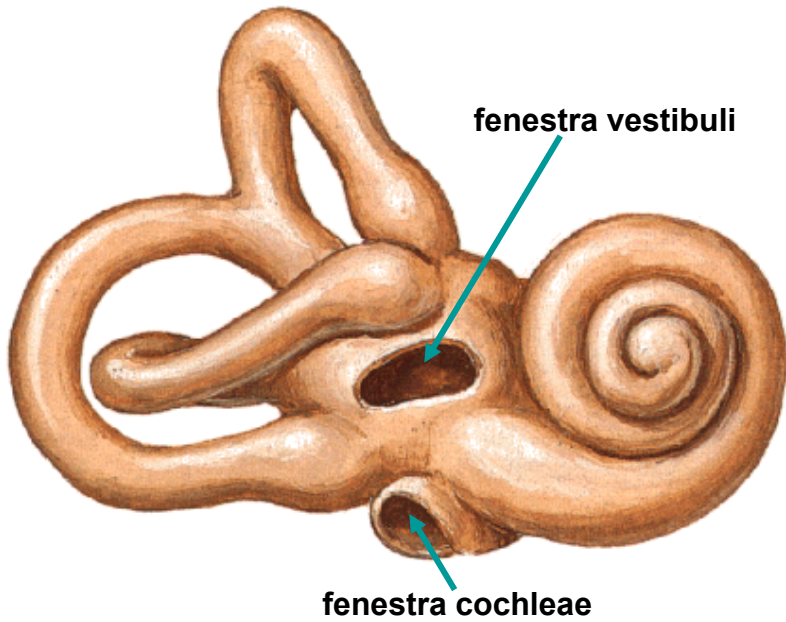
LABYRINTHUS OSSEUS



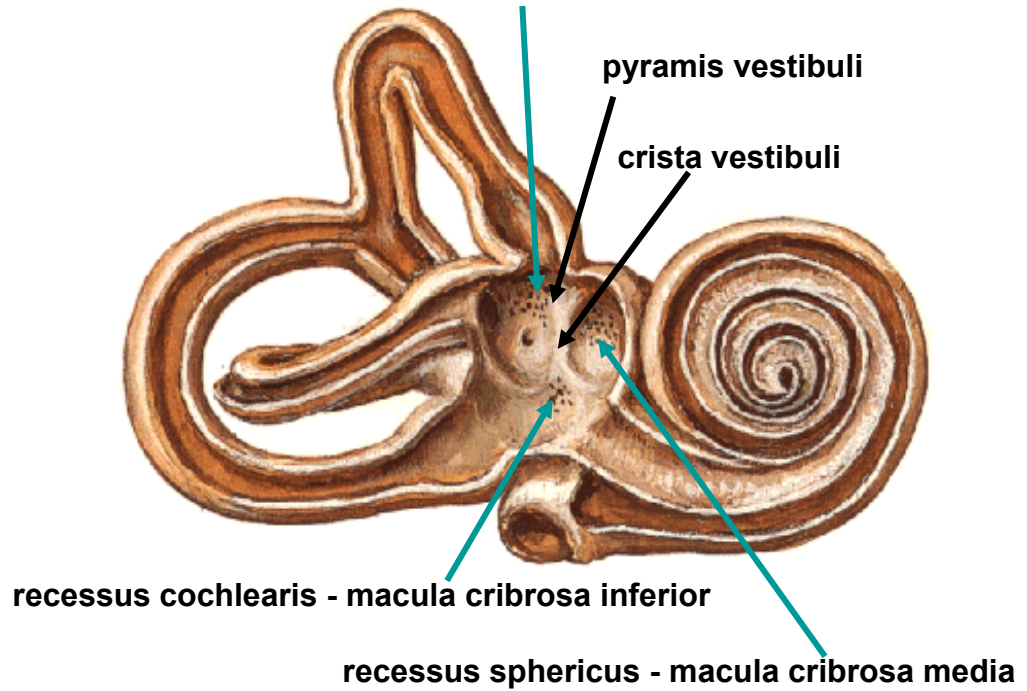
Right Osseous Labyrinth
Anterolateral View



recessus ellipticus - macula cribrosa superior



cochlea, vestibulum et canales semicirculares ossei



COCHLEA

Modiolus

Canalis spiralis cochleae

Cupula

Lamina spiralis ossea

Scala vestibuli

Scala tympani

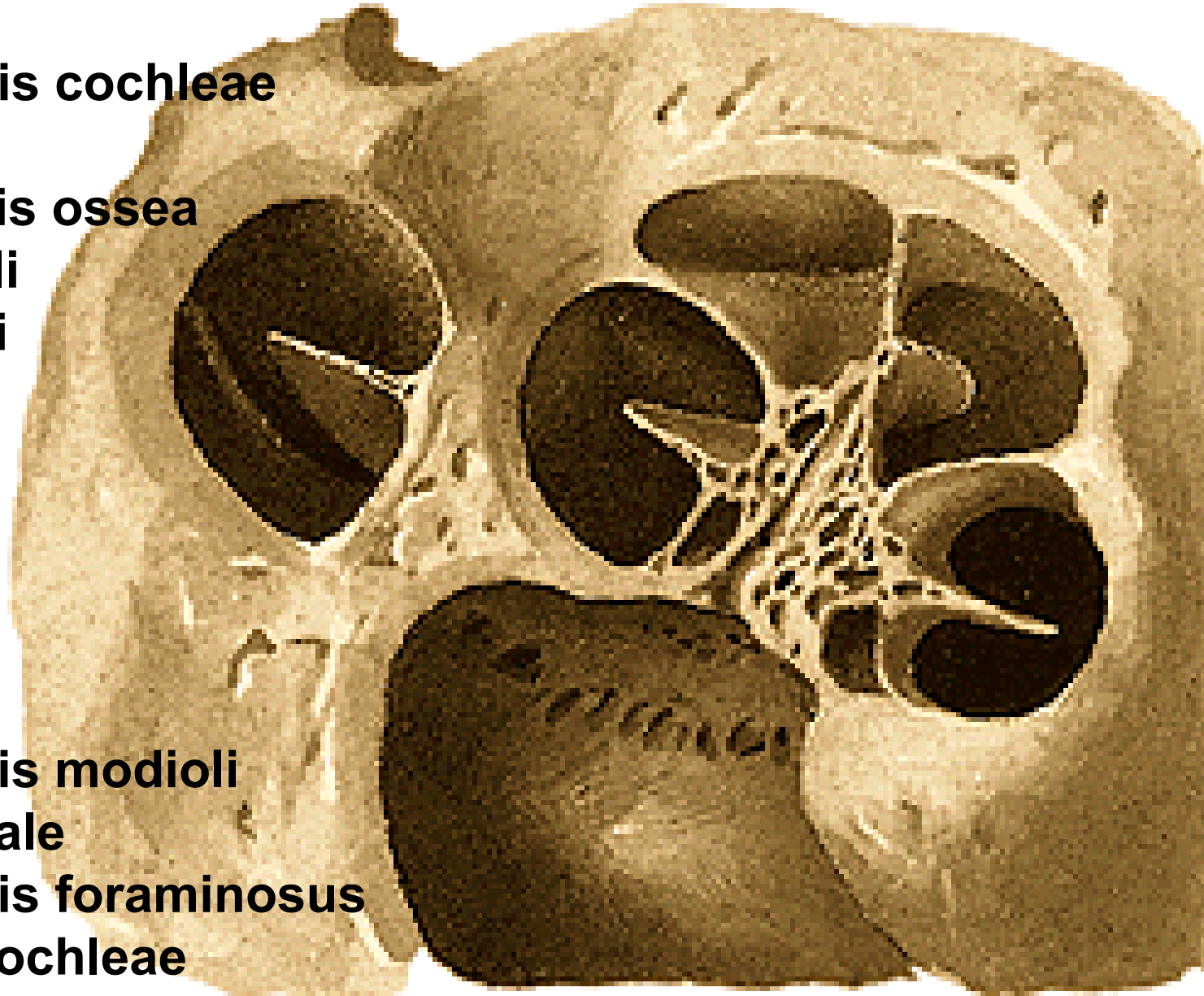
Helicotrema

Canalis spiralis modioli

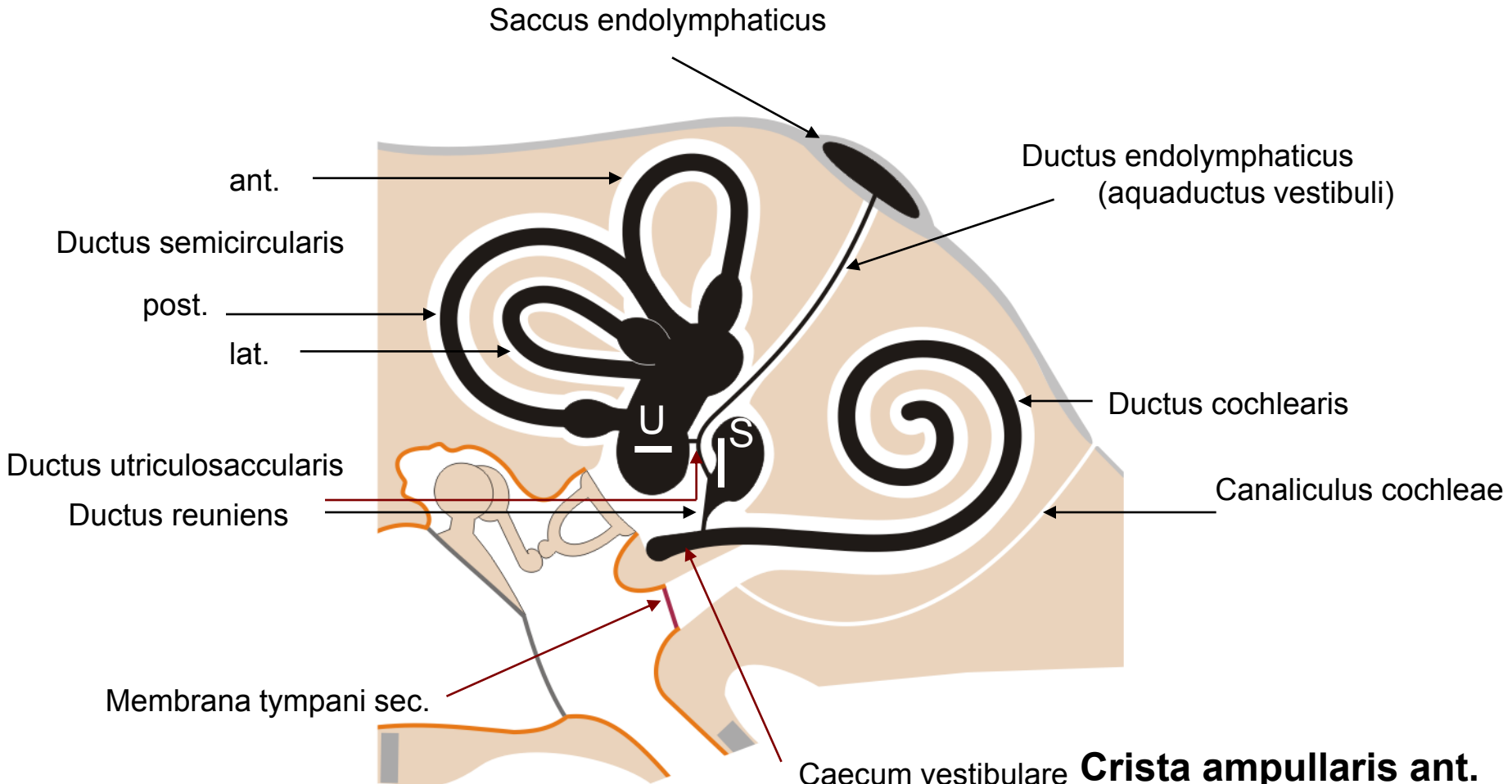
Ganglion spirale

Tractus spiralis foraminosus

Canaliculus cochleae



LABYRINTHUS MEMBRANACEUS



Macula sacculi
Macula utriculi
Statoconia

Crista ampullaris ant.
Crista ampullaris lat.
Crista ampullaris post.
Stereocilia
Cupula

Caecum cupulare
Caecum vestibulare

Scala vestibuli
(perilymph)

Ductus
cochlearis
(endolymph)

Membrana vestibularis

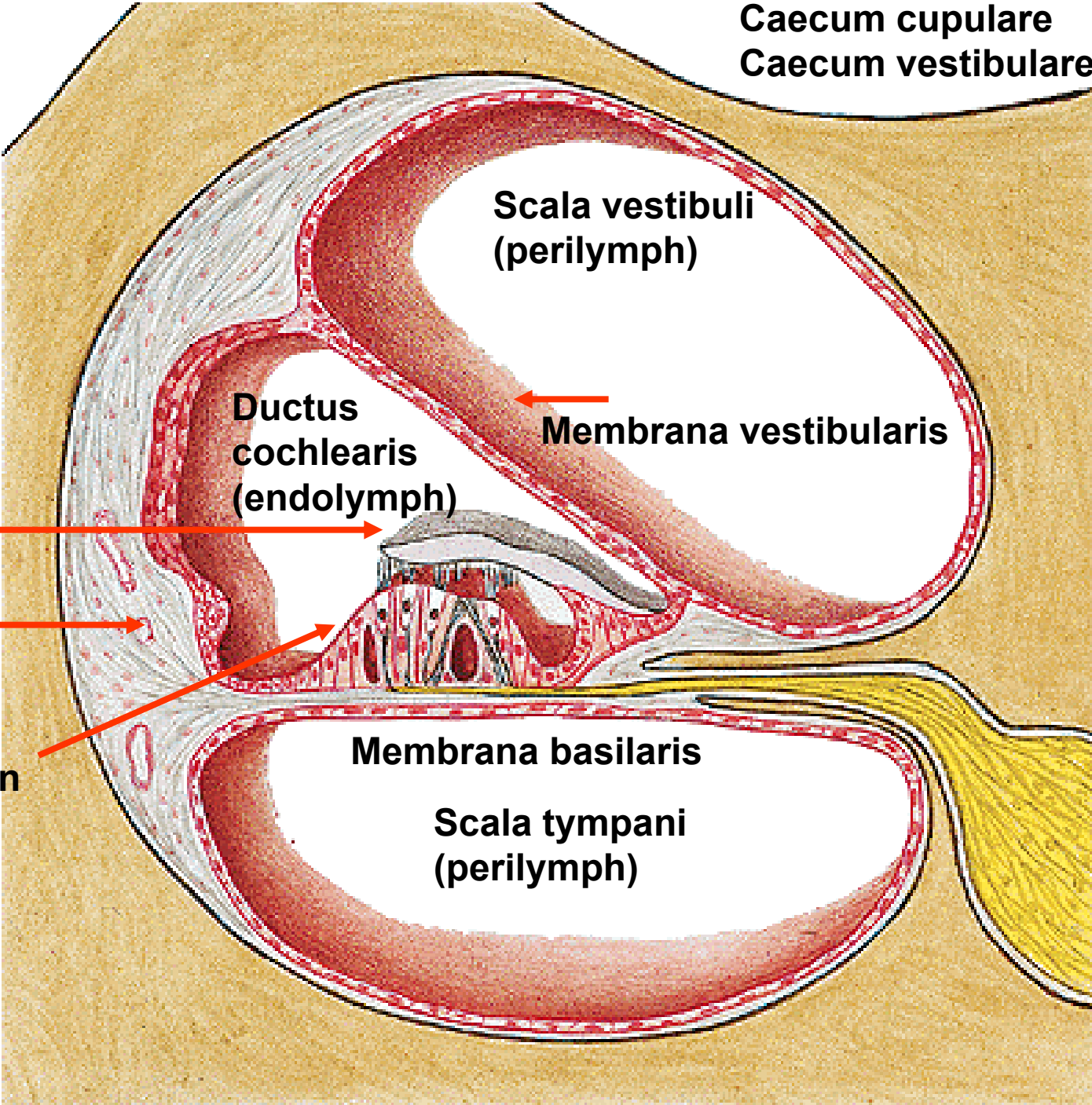
Membrana
tectoria

Stria
vascularis

Spiral organ
of Corti

Membrana basilaris

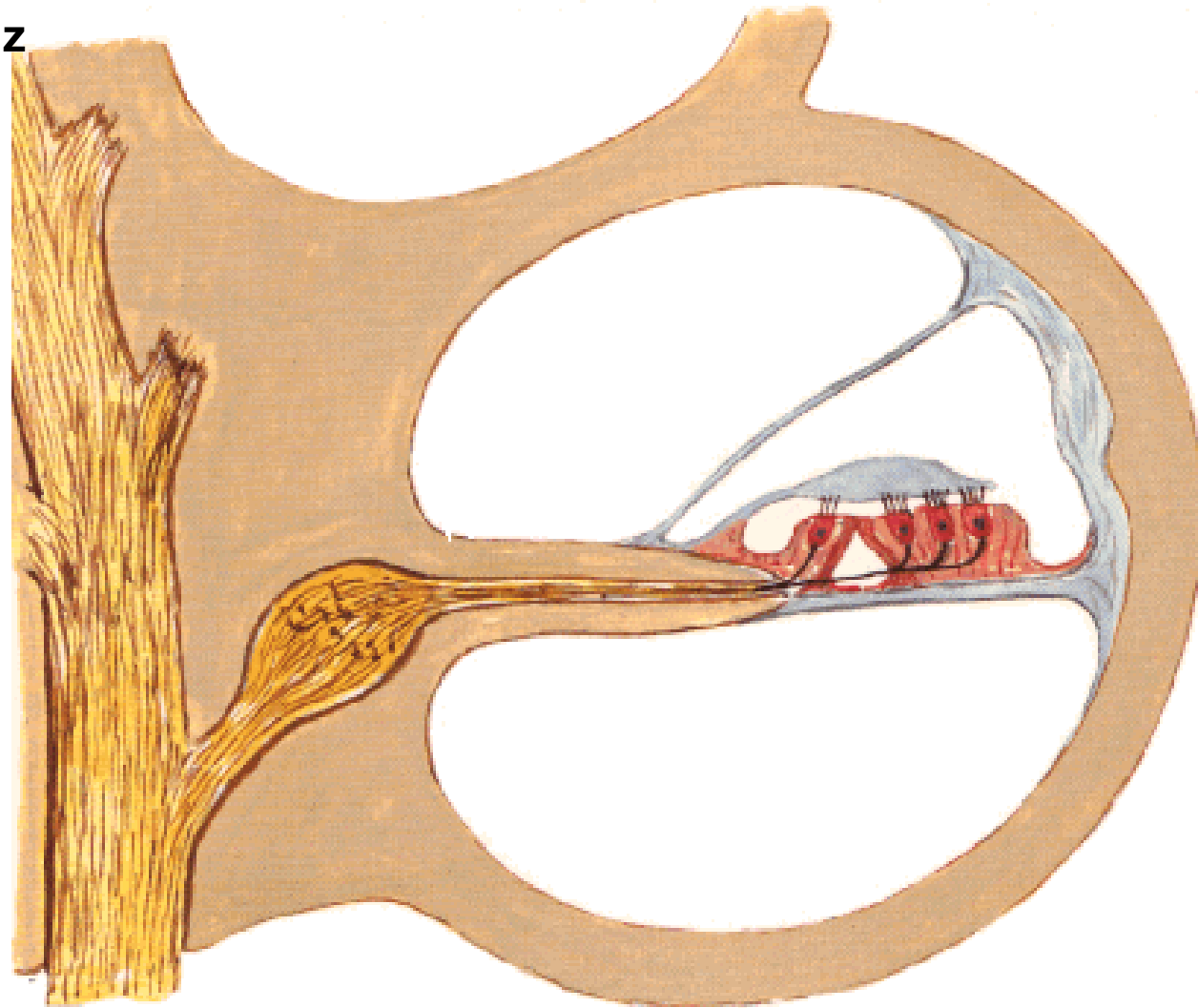
Scala tympani
(perilymph)

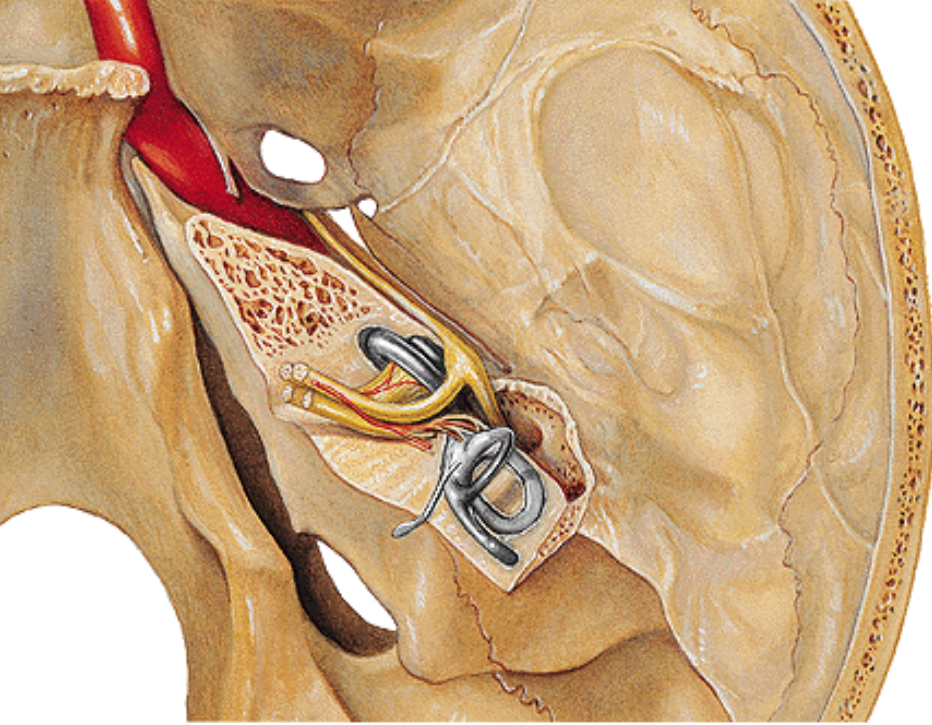


Osseous and Membranous Labyrinths

Section Through Turn of Cochlea

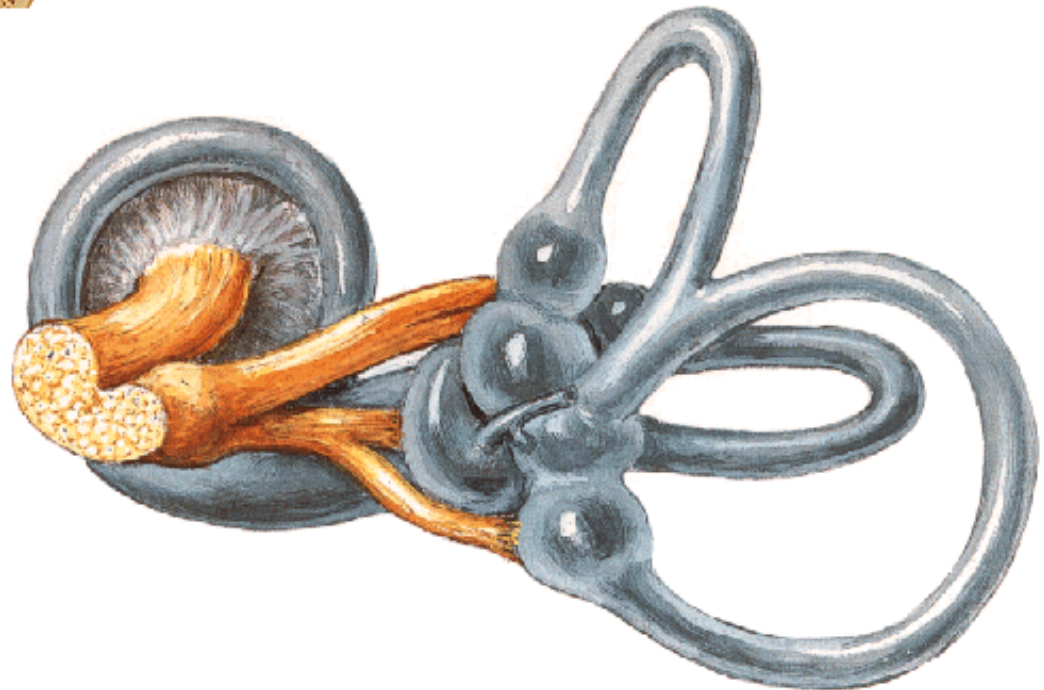
20-20000Hz
1500-3000Hz

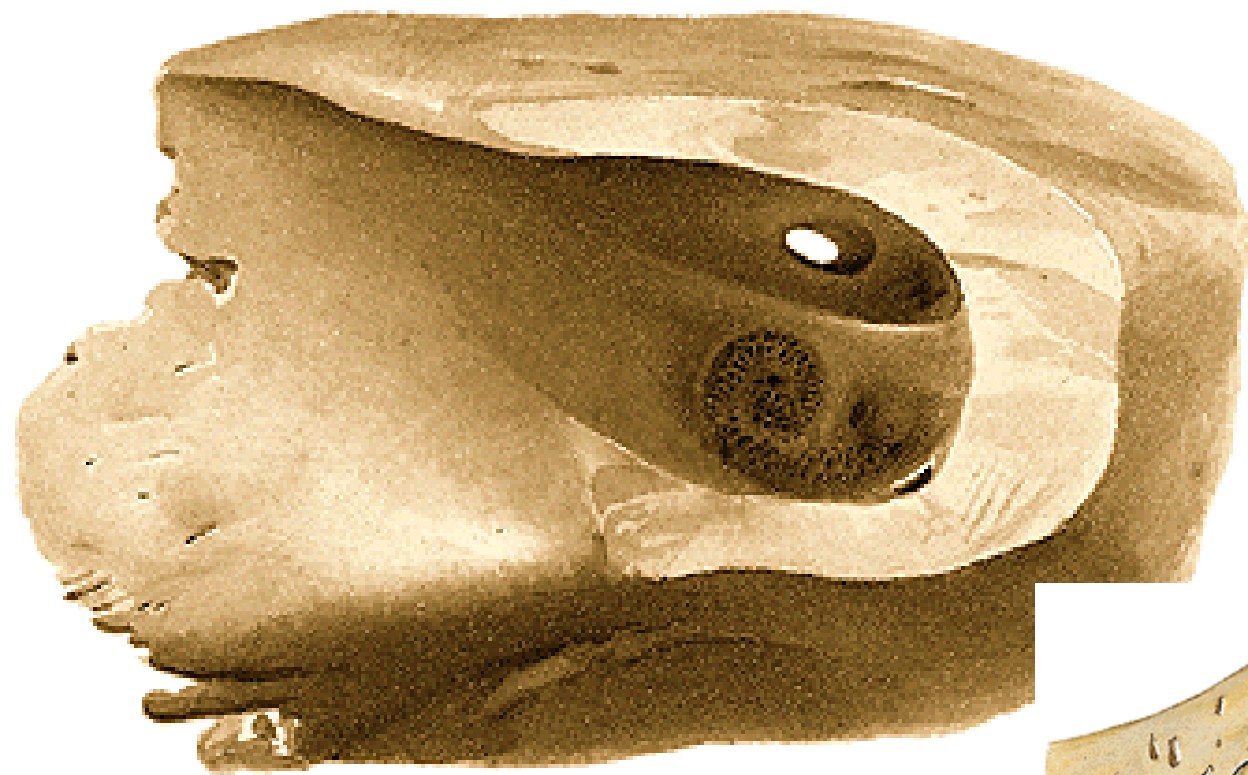




N. VESTIBULOCOCHLEARIS

- **PARS COCHLEARIS**
- **PARS VESTIBULARIS**
 - **N. utriculoampullaris**
 - **n. utricularis**
 - **n. ampullaris ant.**
 - **n. ampullaris lat.**
 - **N. saccularis**
 - **N. ampullaris post.**





FUNDUS MEATUS ACUSTICI INTERNI

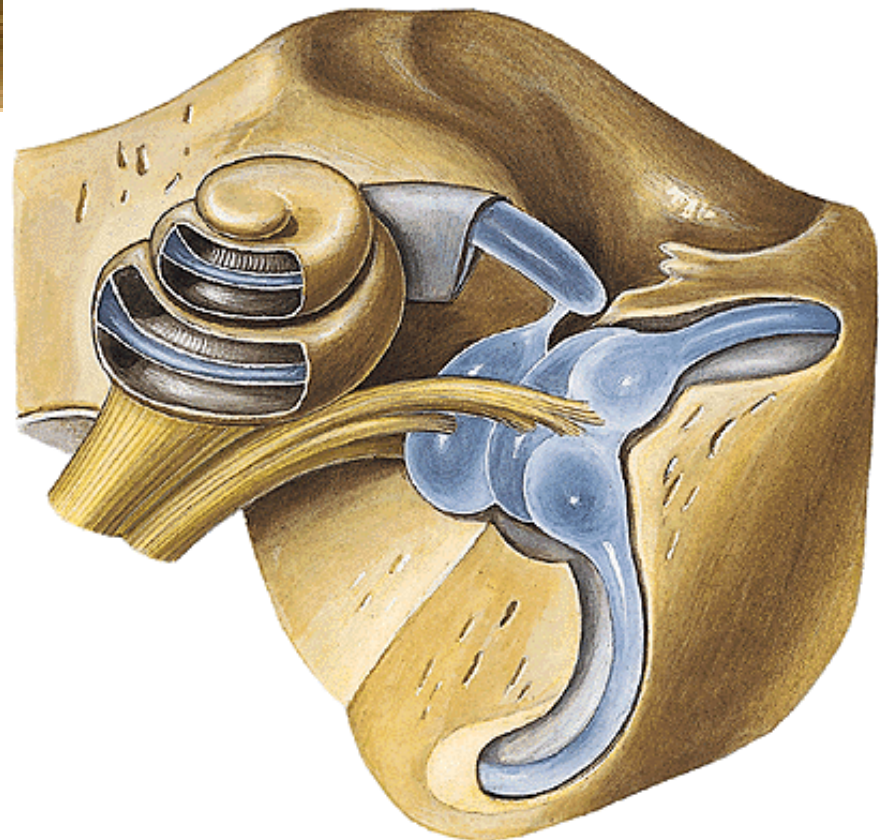
Introitus can. n. VII

Area cochlea

Area vestibularis sup.

Area vestibularis inf.

Foramen singulare



recessus ellipticus (utricle)
- macula cribrosa superior

n. utriculoampullaris
(macula statica utriculi
crista ampullaris anterior
et lateralis)

area vestibularis superior

recessus sphericus (sacculus)
- macula cribrosa media

n. saccularis
(macula statica sacculi)

area vestibularis inferior

recessus cochlearis
- macula cribrosa inferior

caecum vestibulare
n. ampullaris posterior
(crista ampullaris anterior)

foramen singulare

A. STYLOMASTOIDEA (A. AURICULARIS POST.)

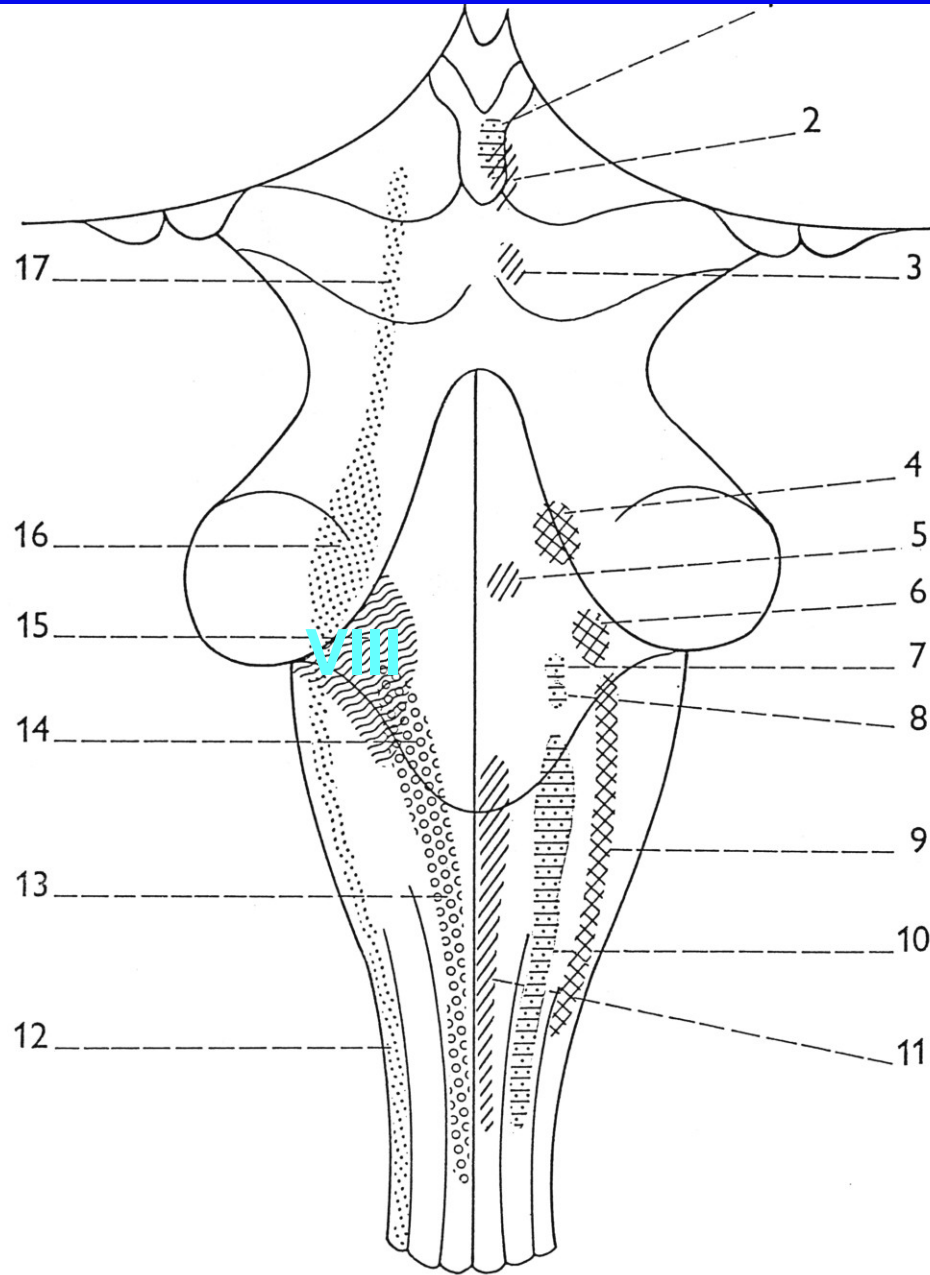
A. TYMPANICA SUP. (A. MENINGEA MEDIA)

A. LABYRINTHI (A. BASILARIS)

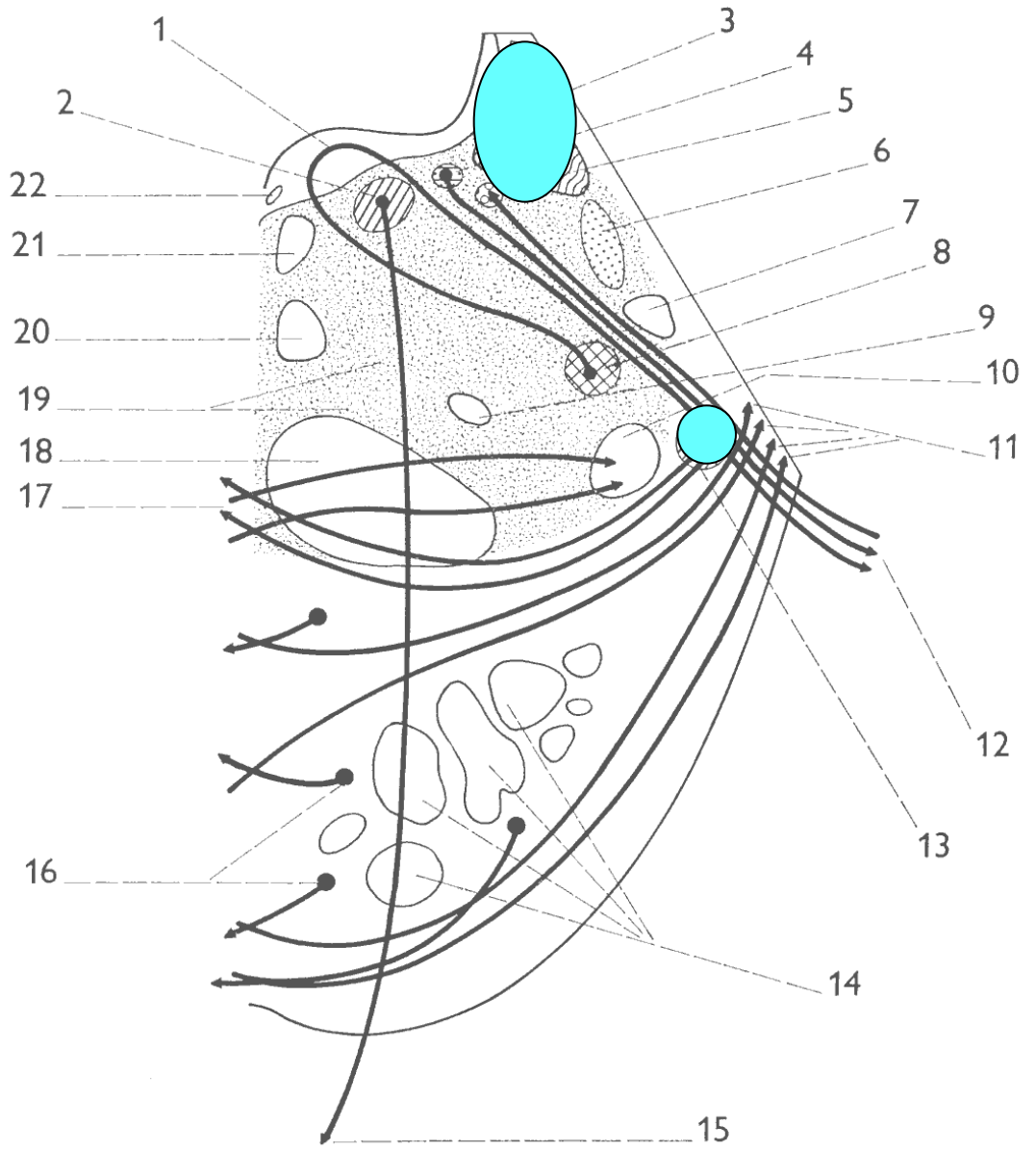
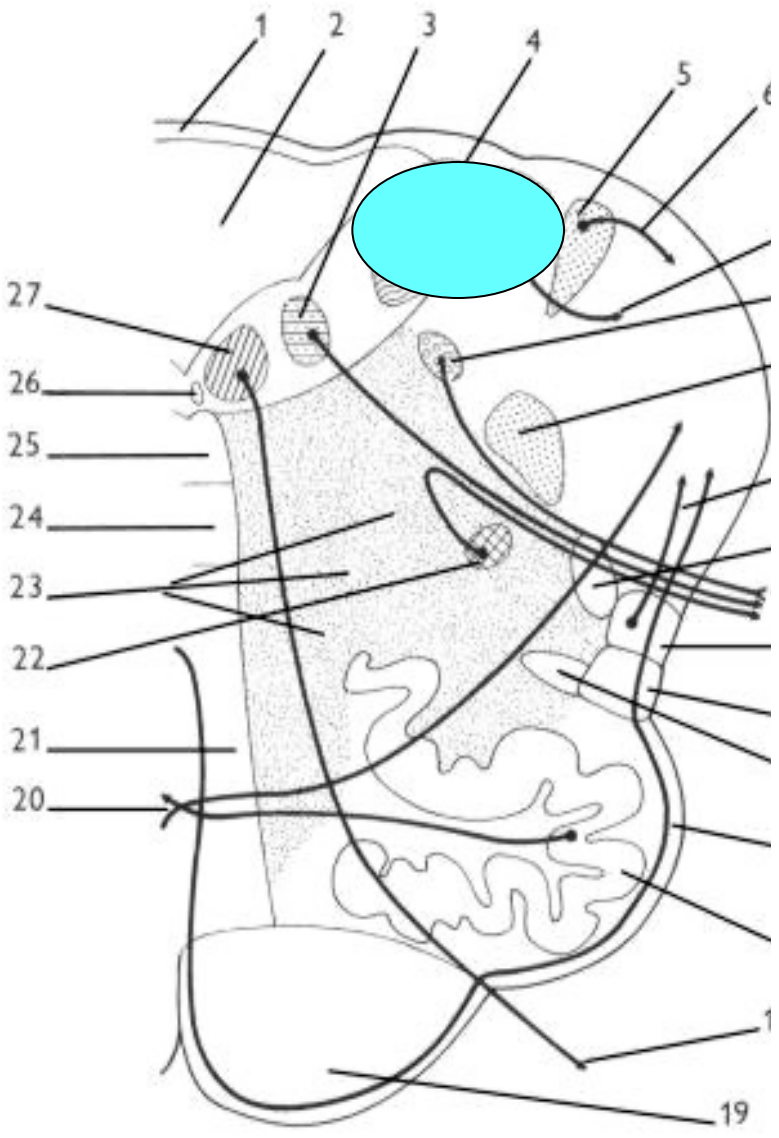
VV. LABYRINTHI (SINUS PETROSUS INF.)

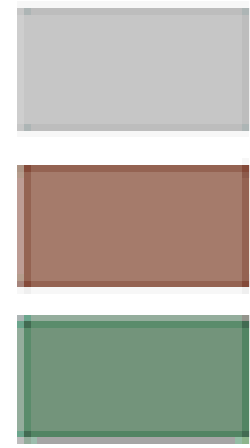
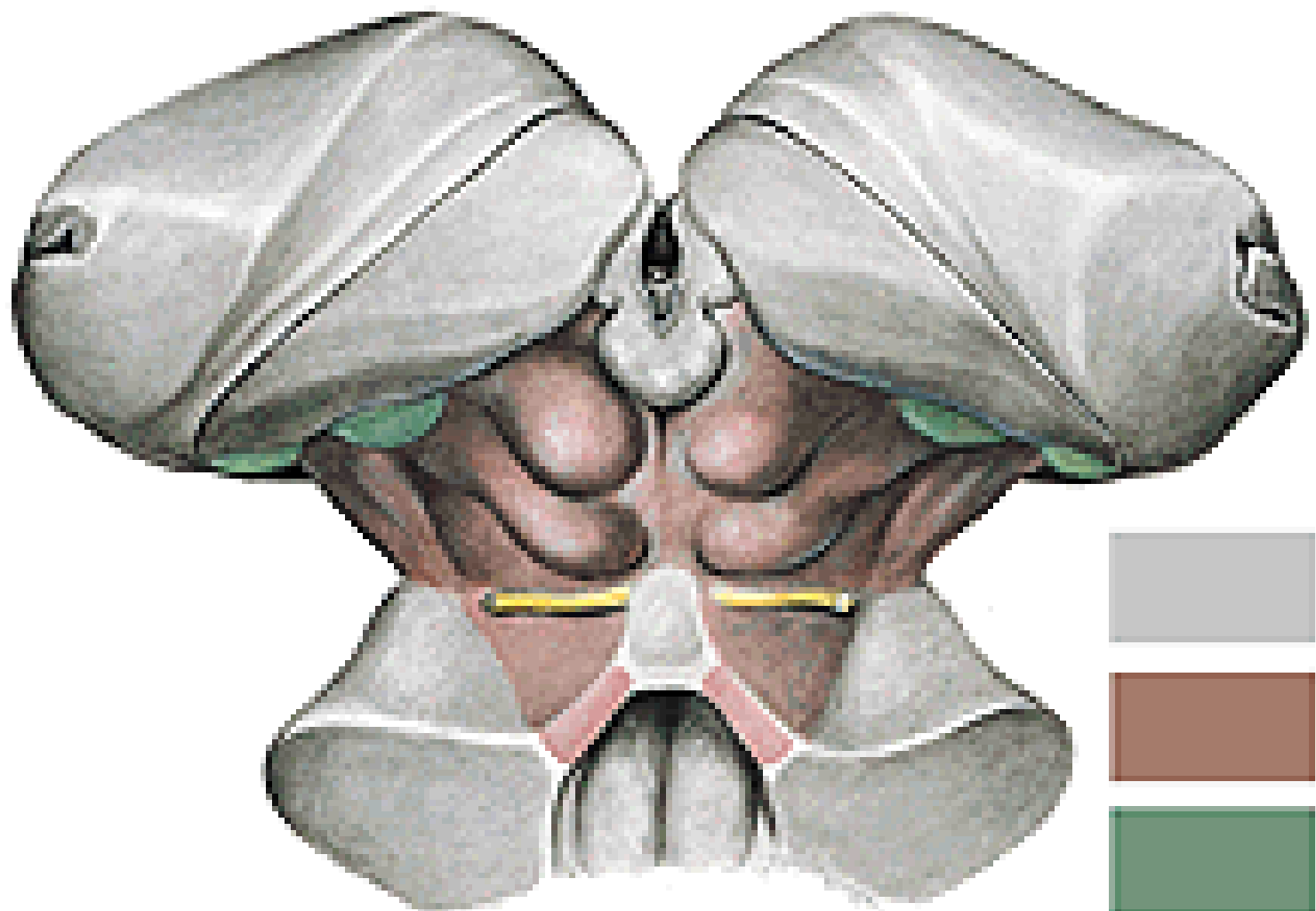
V. CANALICULI COCHLAE (BULBUS V. JUGULARIS INT.)

NCLL. COCHLEARES ET VESTIBULARES

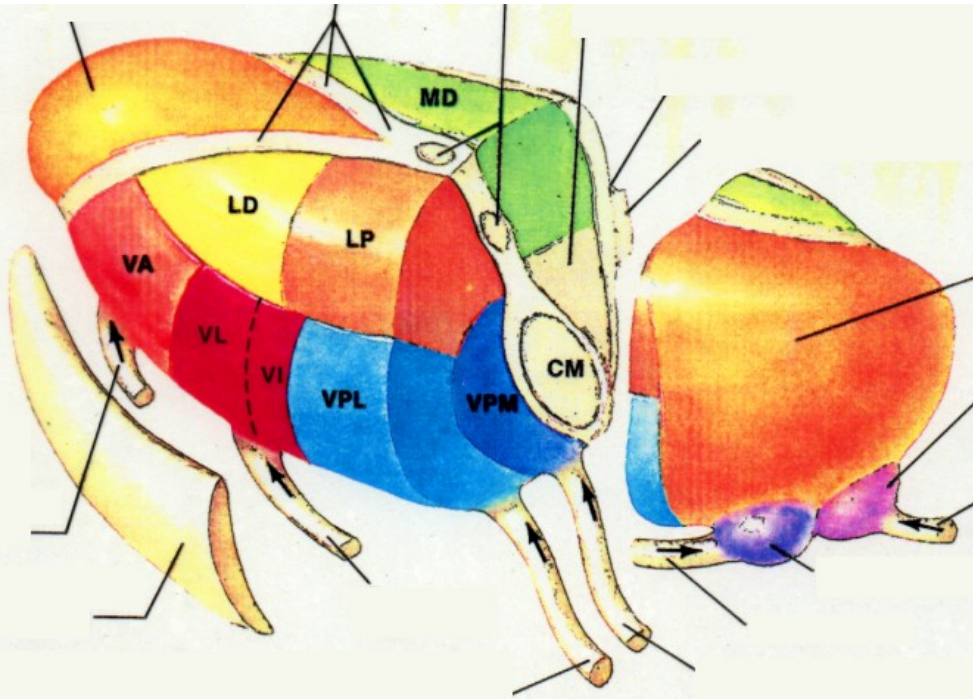


NCLL. COCHLEARES ET VESTIBULARES





THALAMUS



CORTEX

