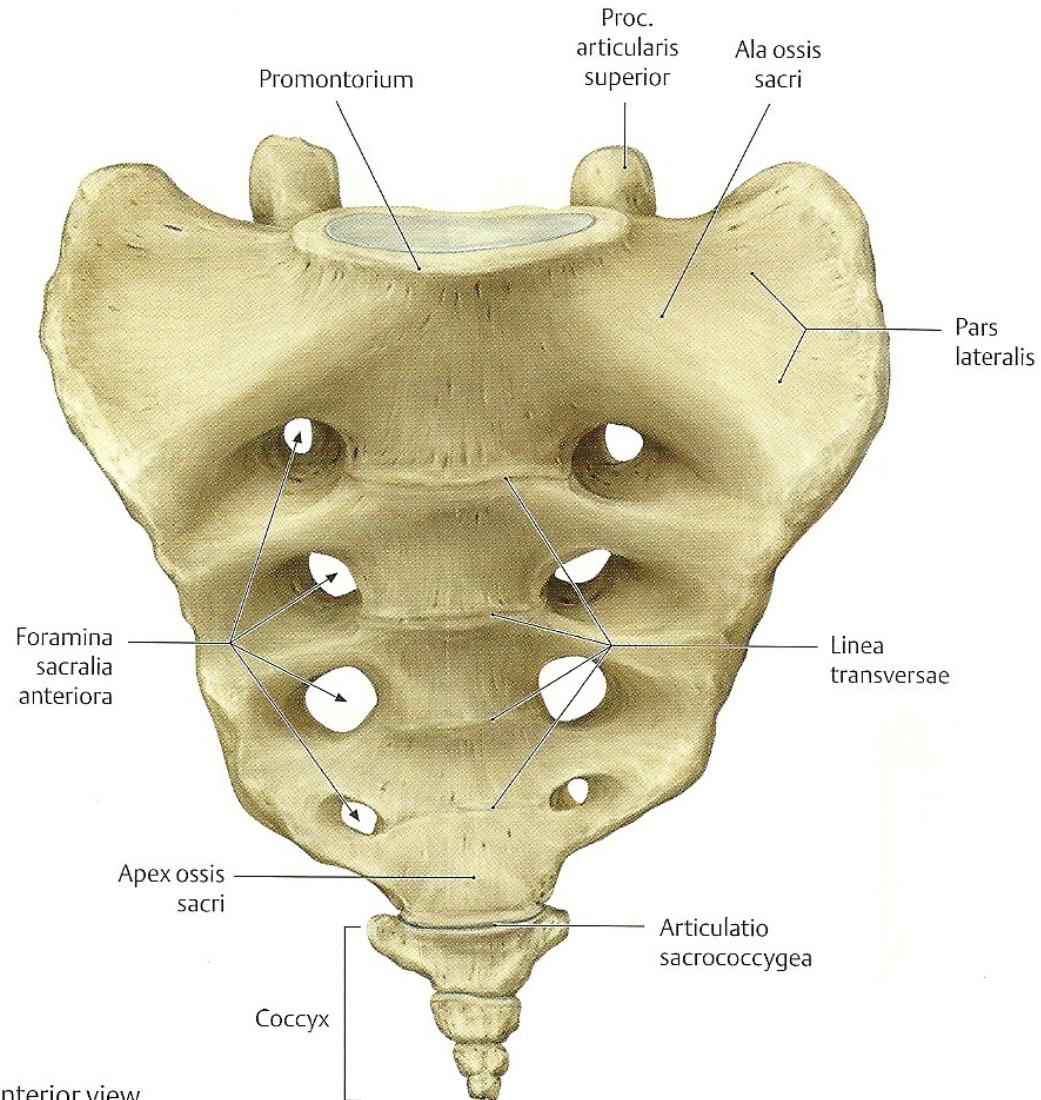
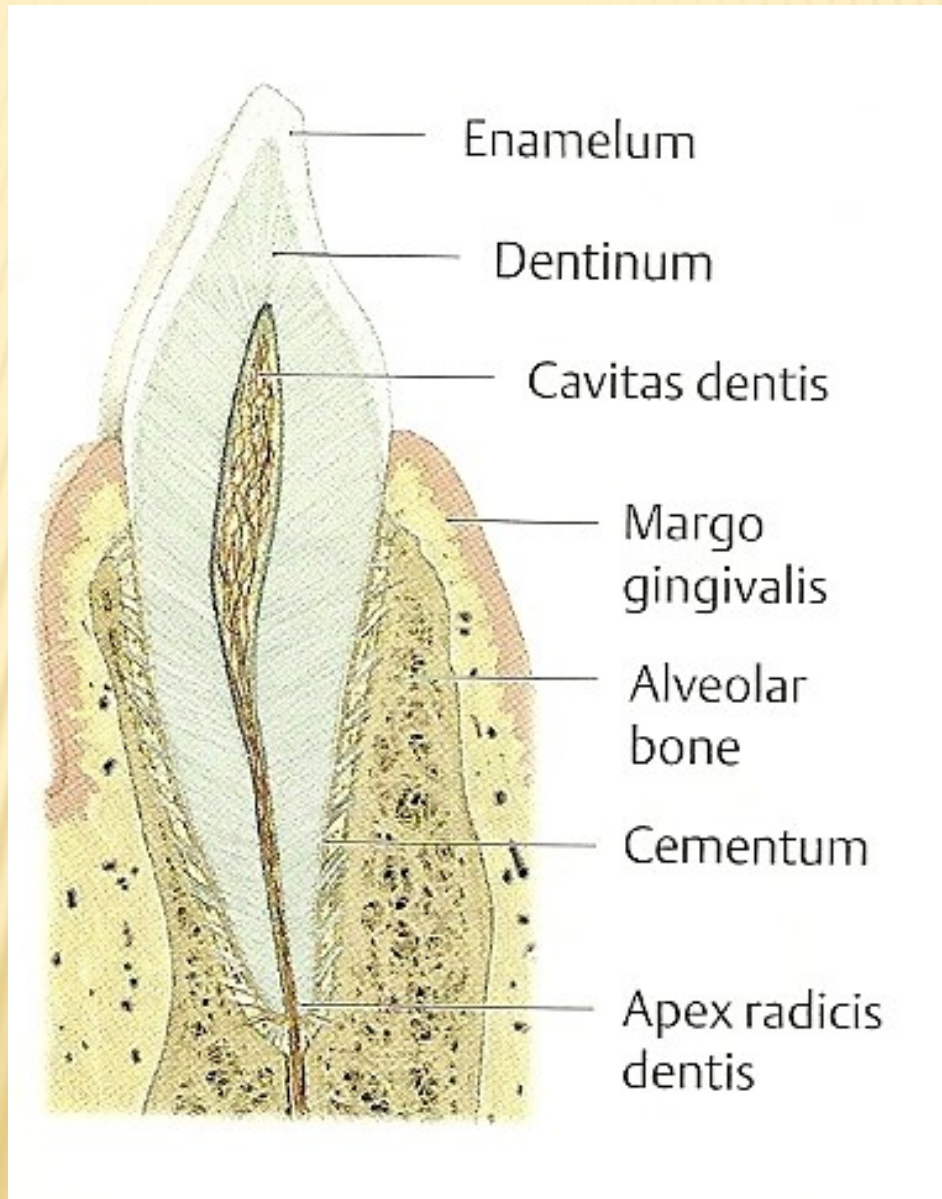


# ALA OSSIS SACRI

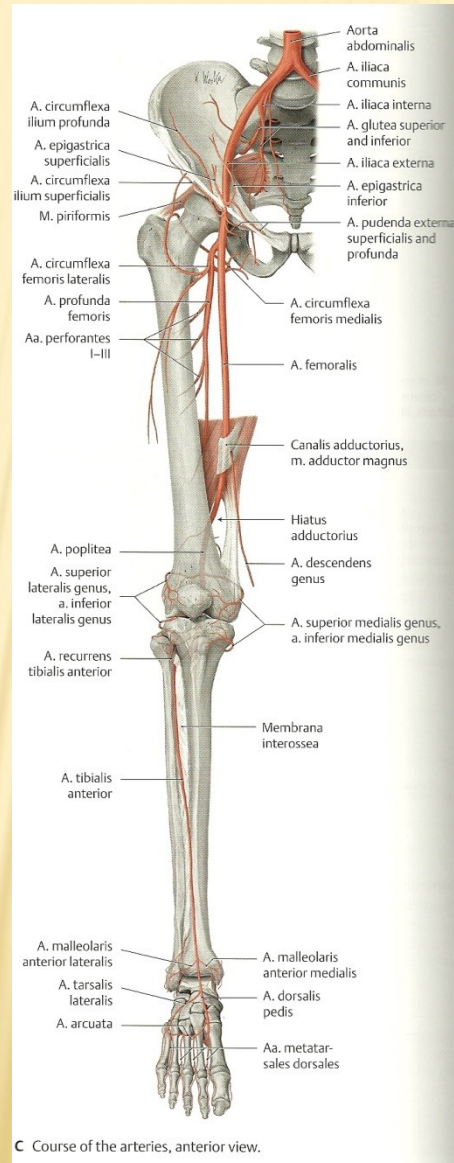


A Anterior view.

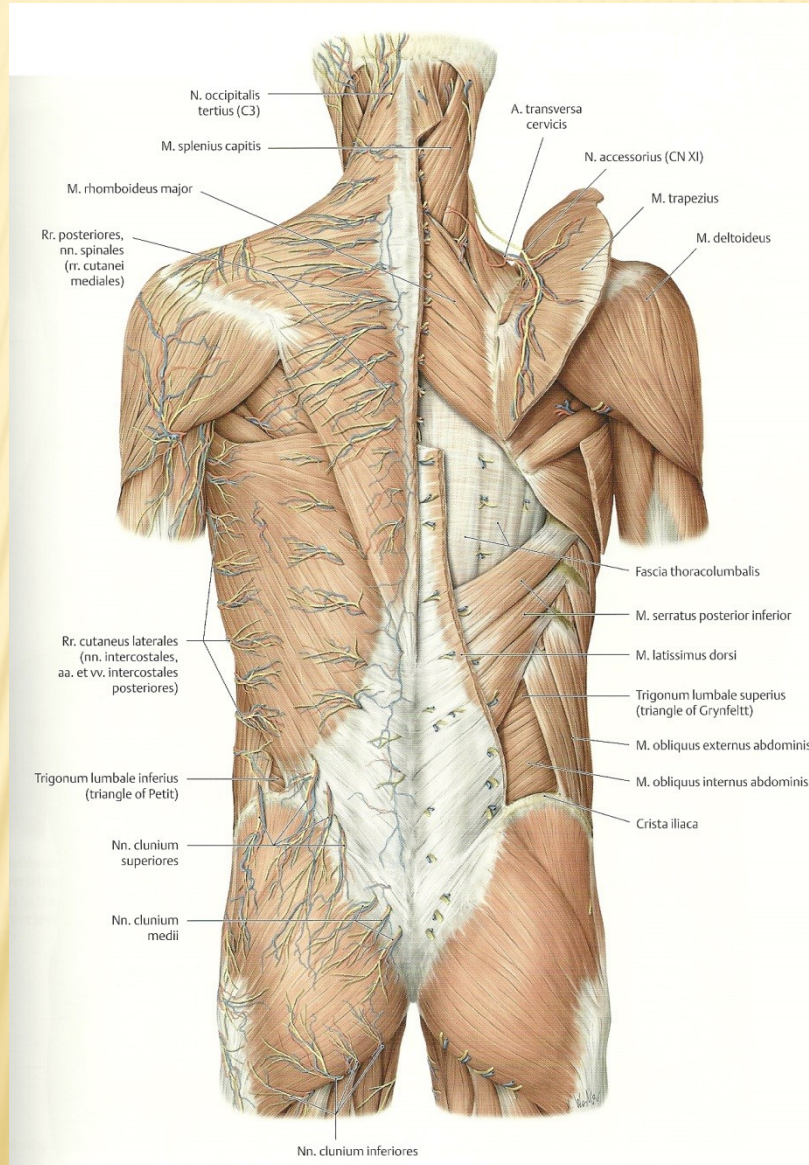
# APEX RADICIS DENTIS



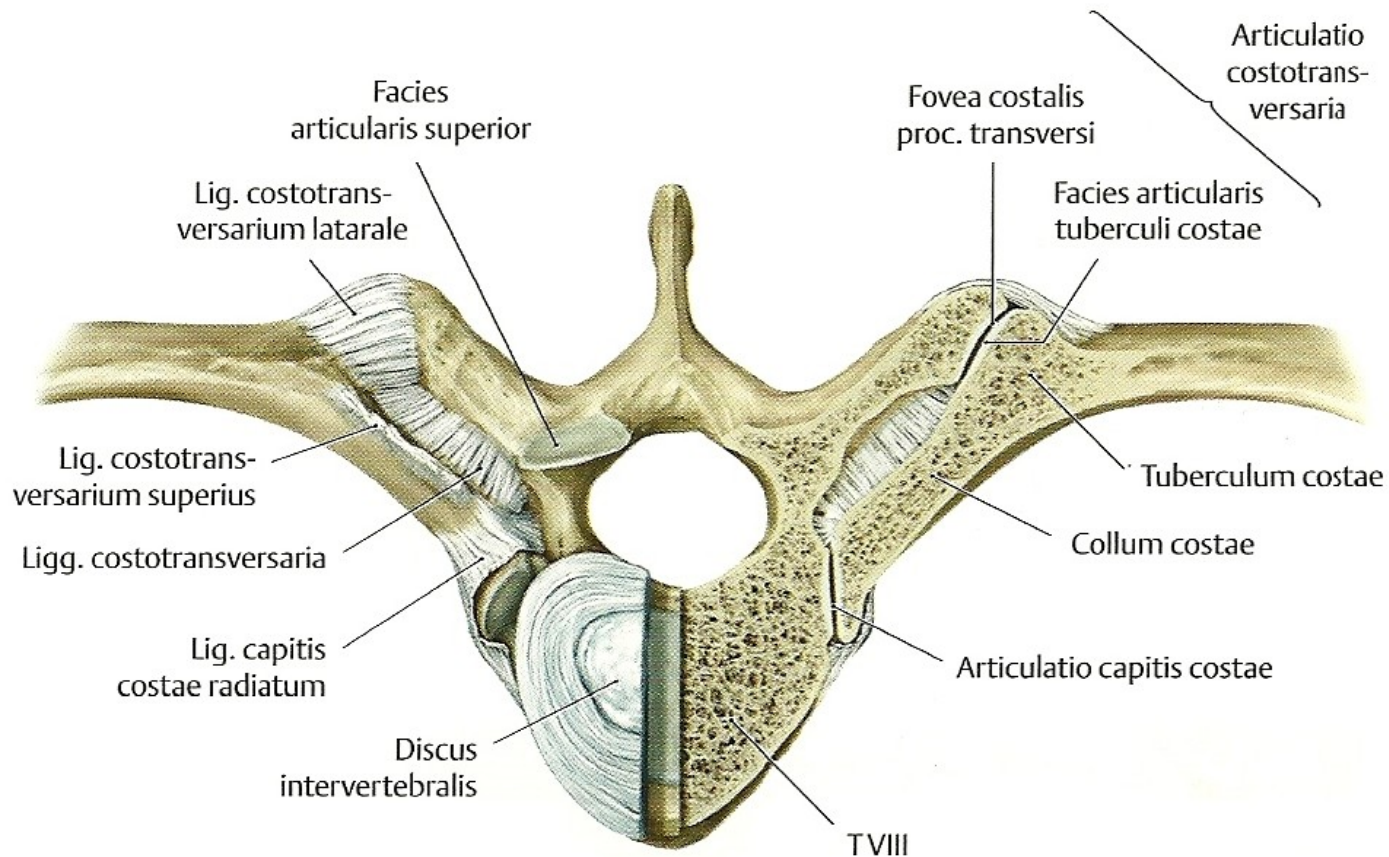
# ARTERIA PROFUNDA FEMORIS



# ARTERIA TRANSVERSA CERVICIS

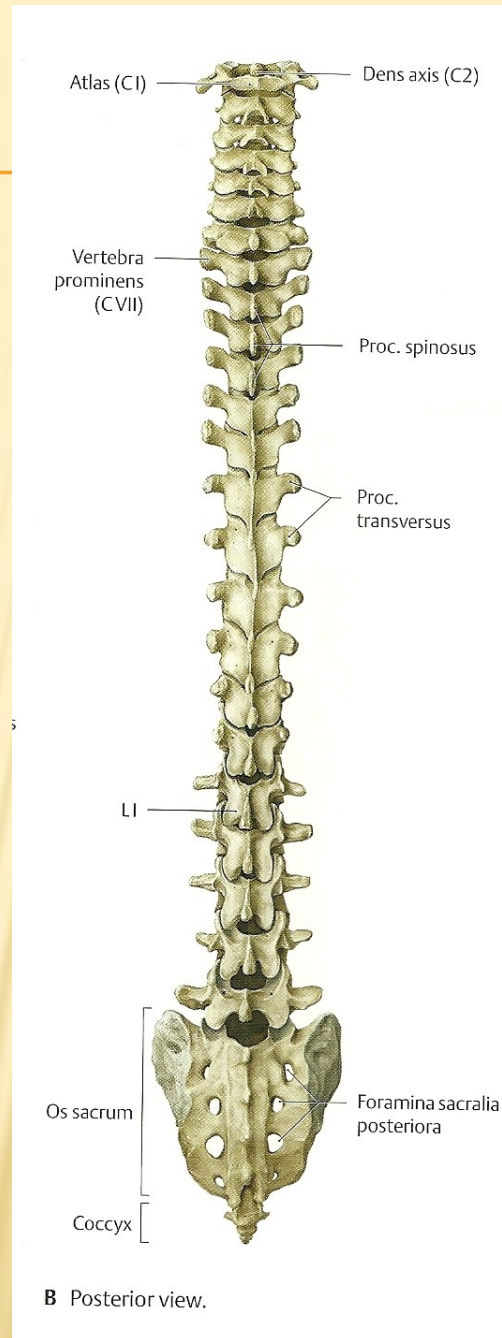


# ARTICULATIO CAPITIS COSTAE

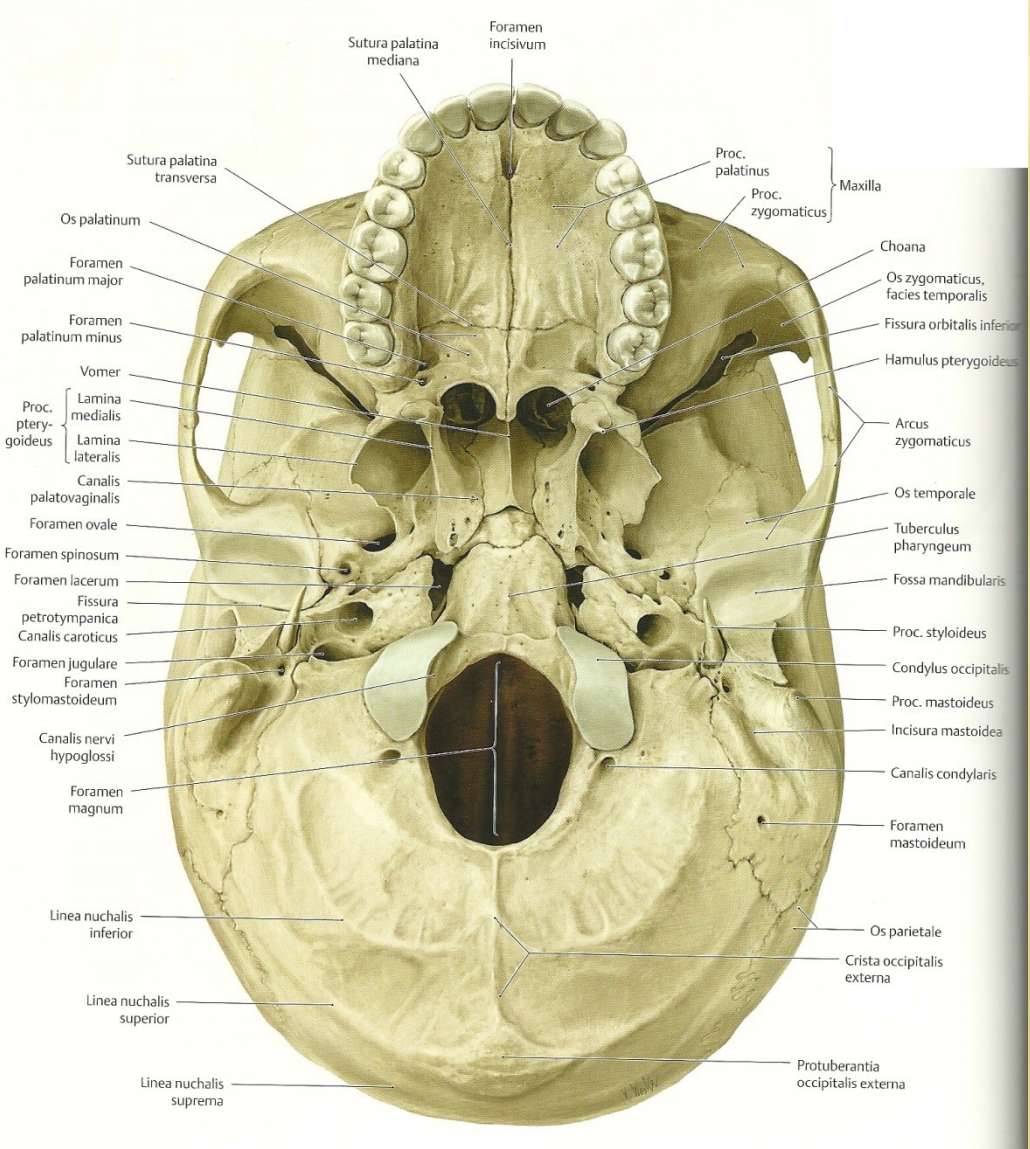


**A** Articulatio costotransversaria. Superior view with joints of the left rib transversely sectioned.

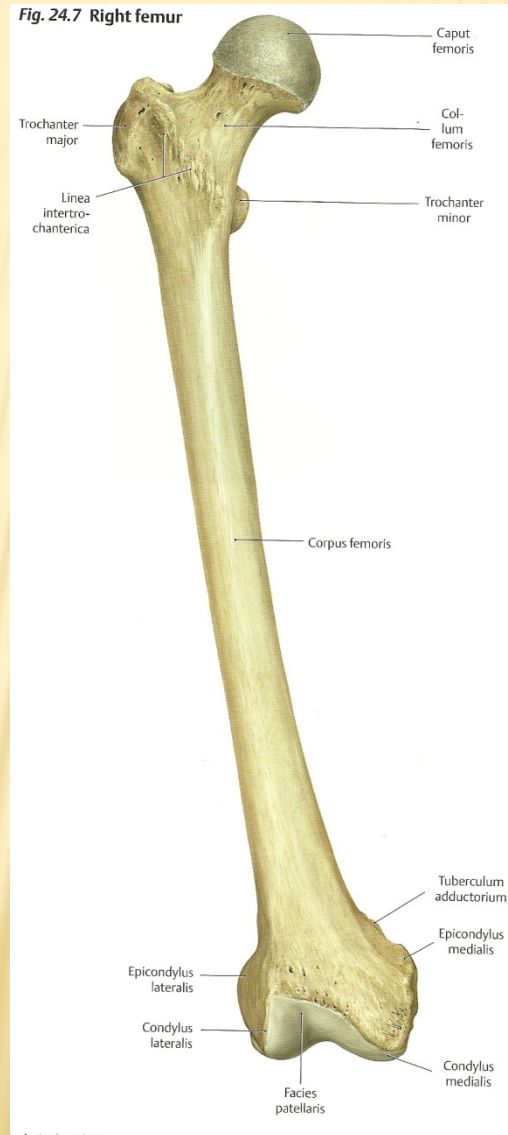
# DENS AXIS



# BASIS CRANII

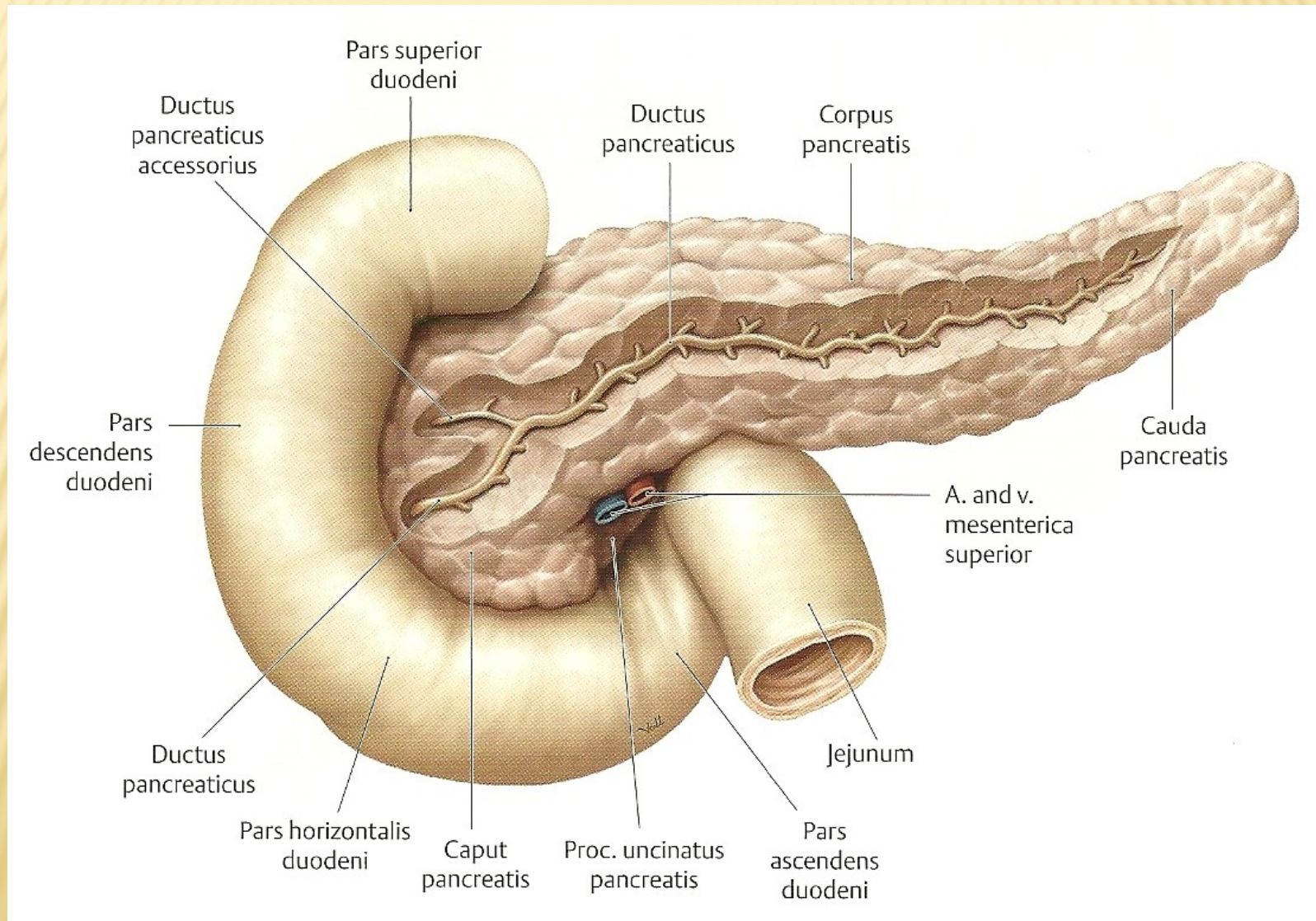


# CAPUT FEMORIS, COLLUM FEMORIS

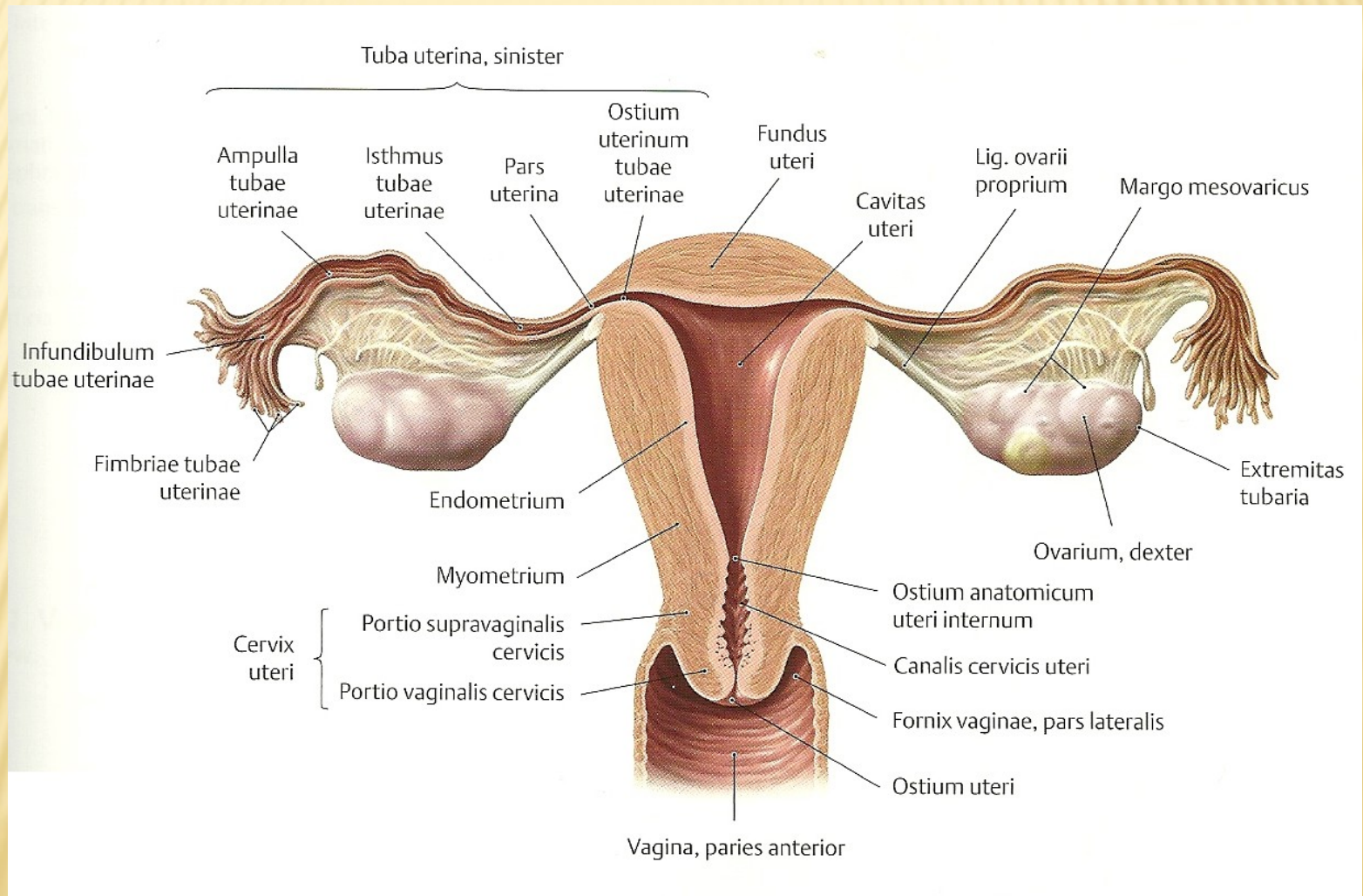




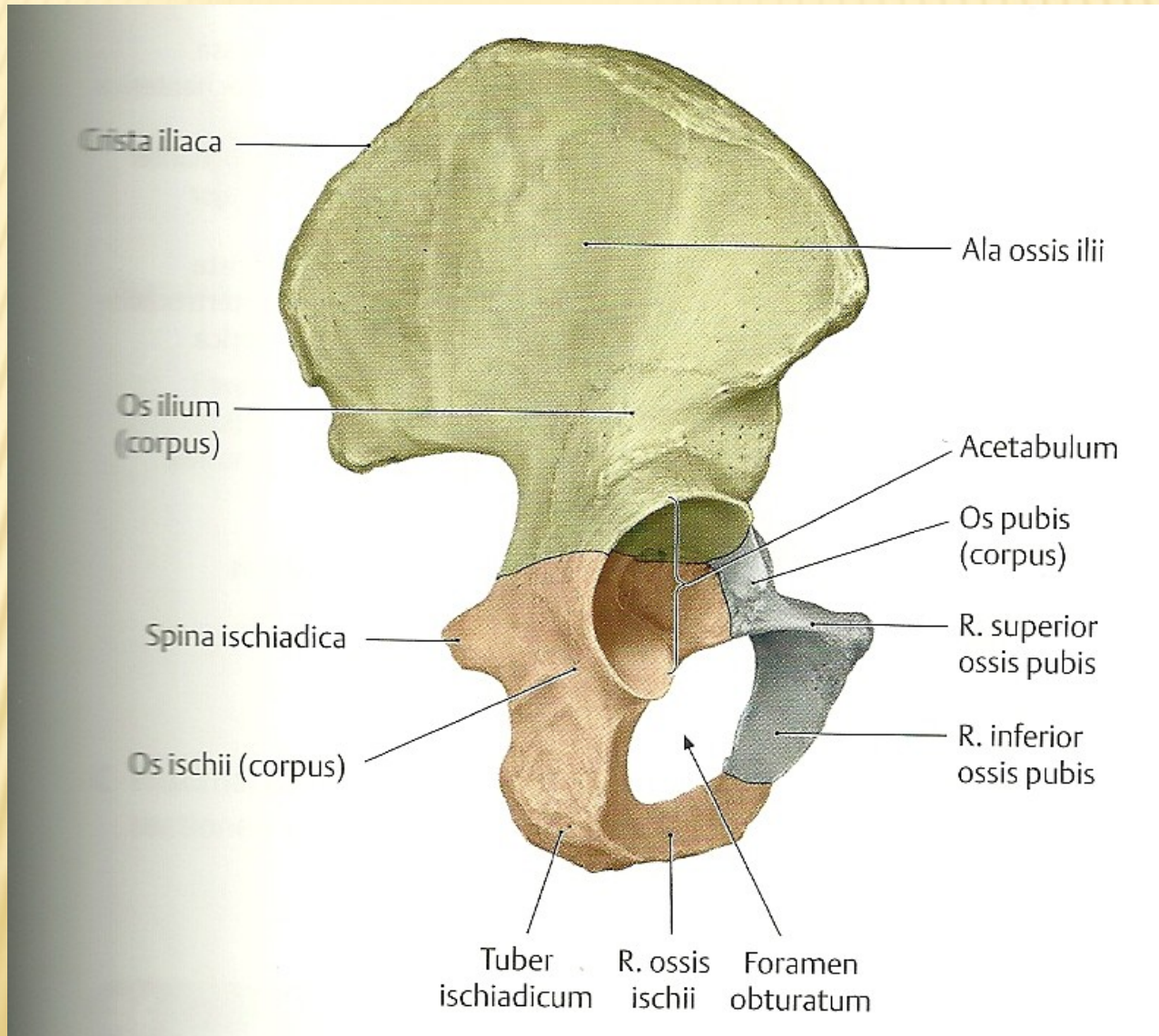
# CAPUT PANCREATIS



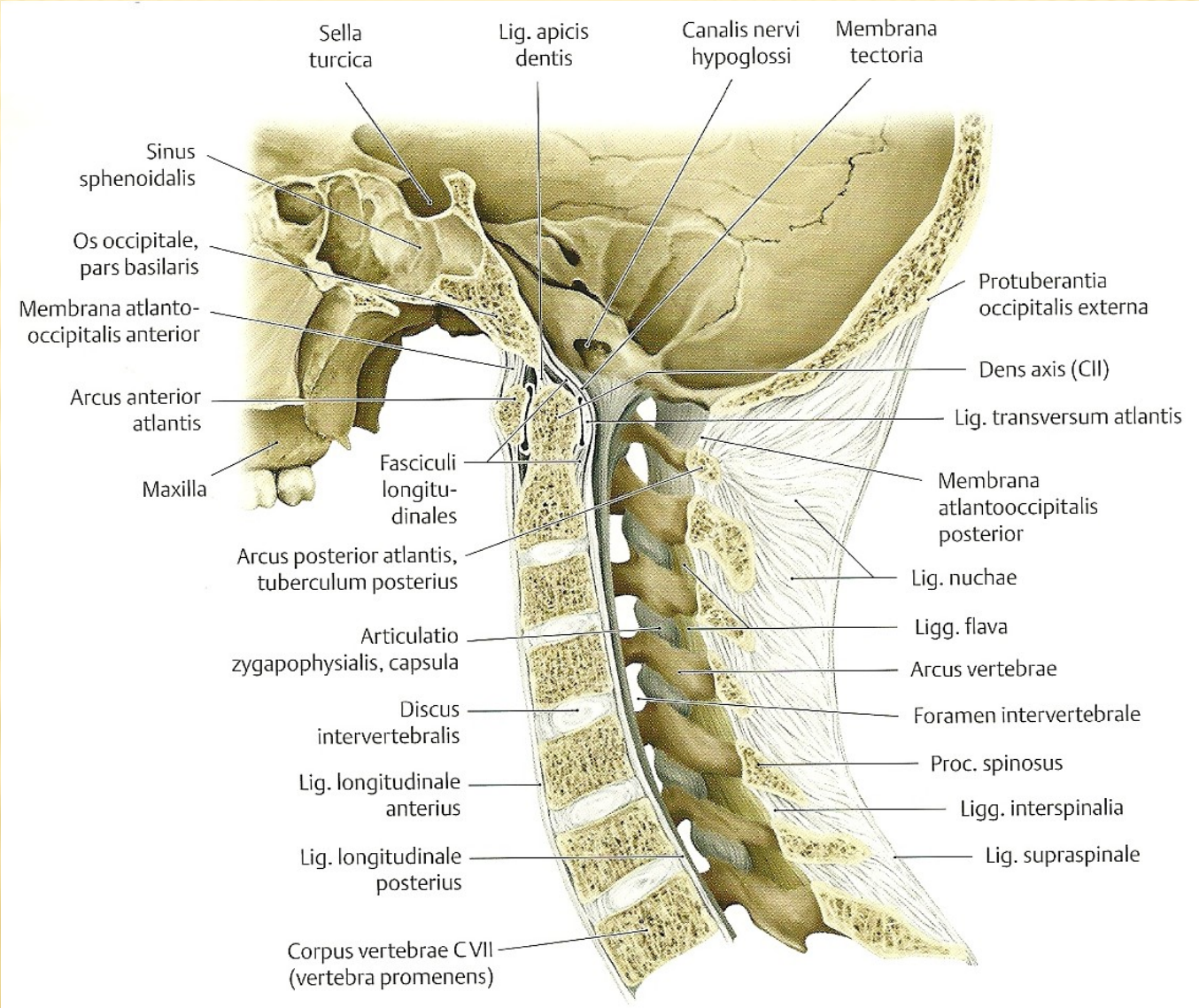
# CERVIX UTERI



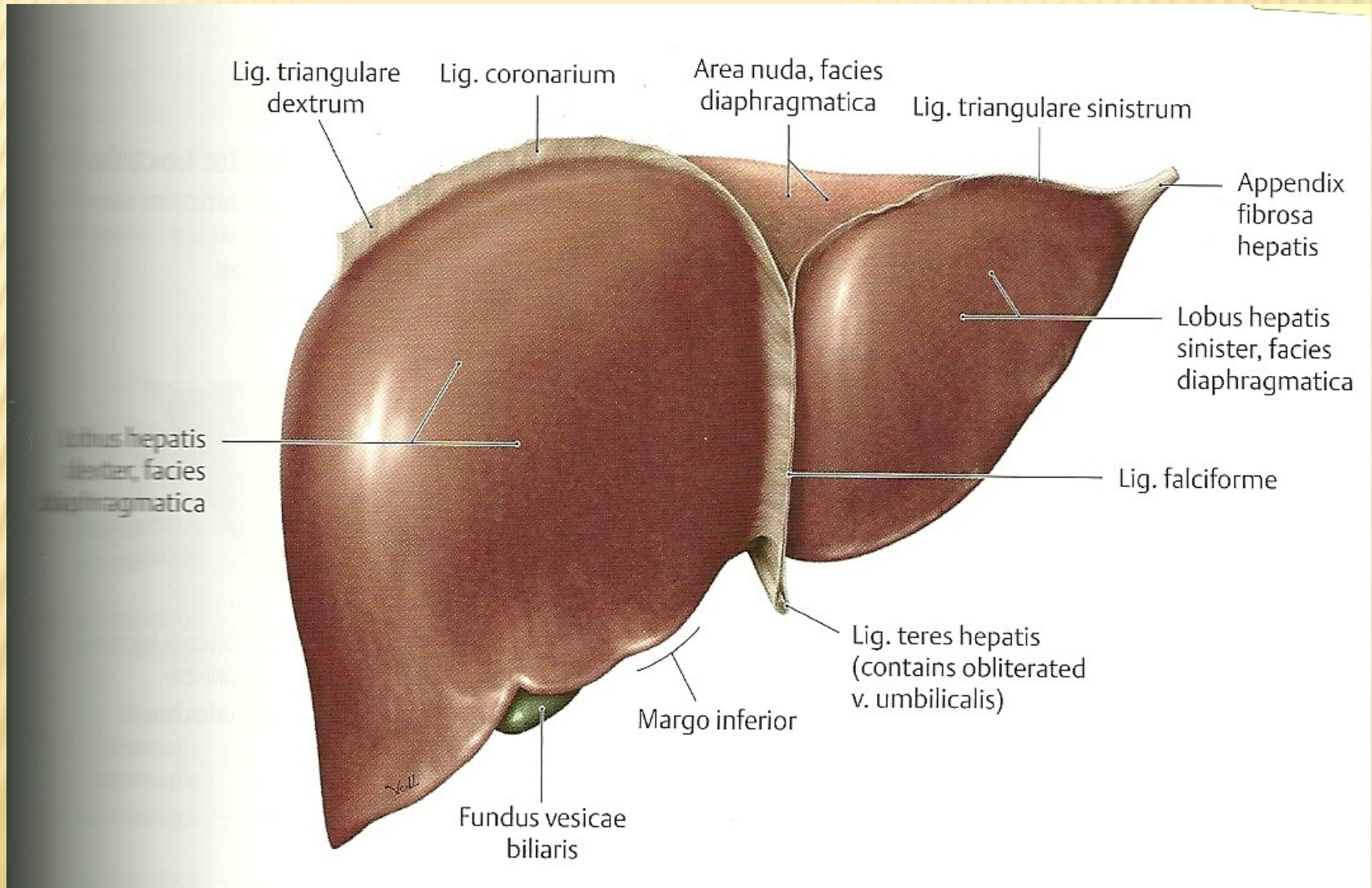
# CORPUS OSSIS ISCHII



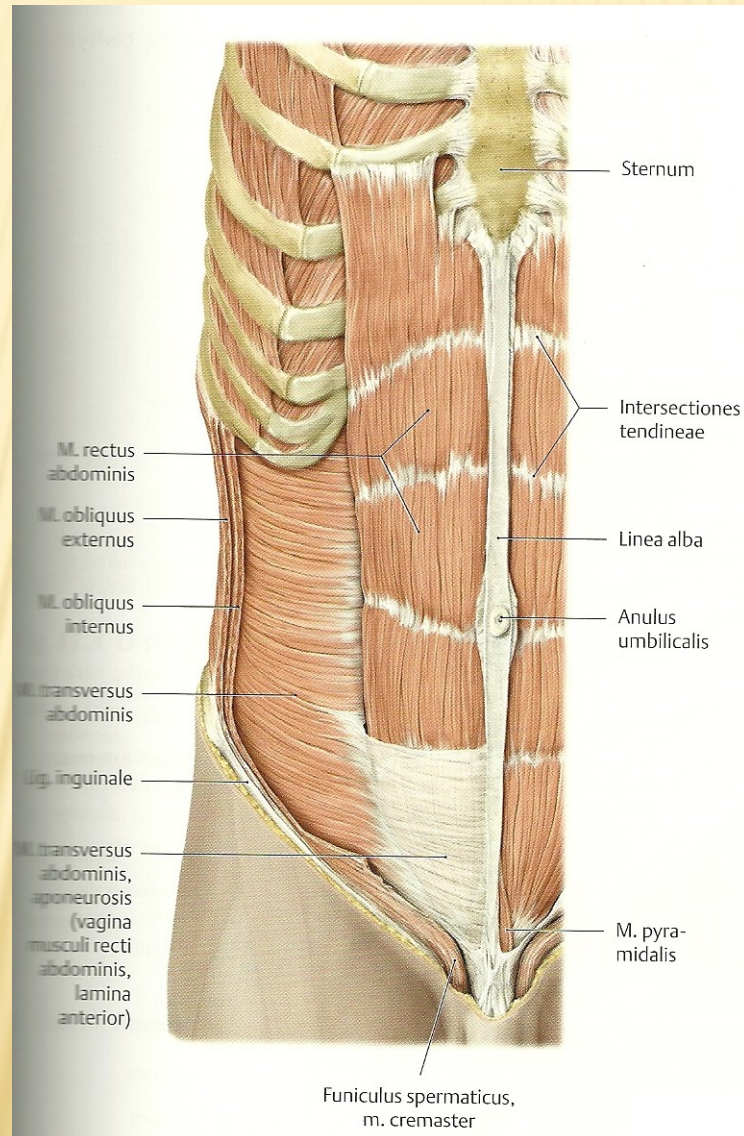
# LIGAMENTUM TRANSVERSUM ATLANTIS



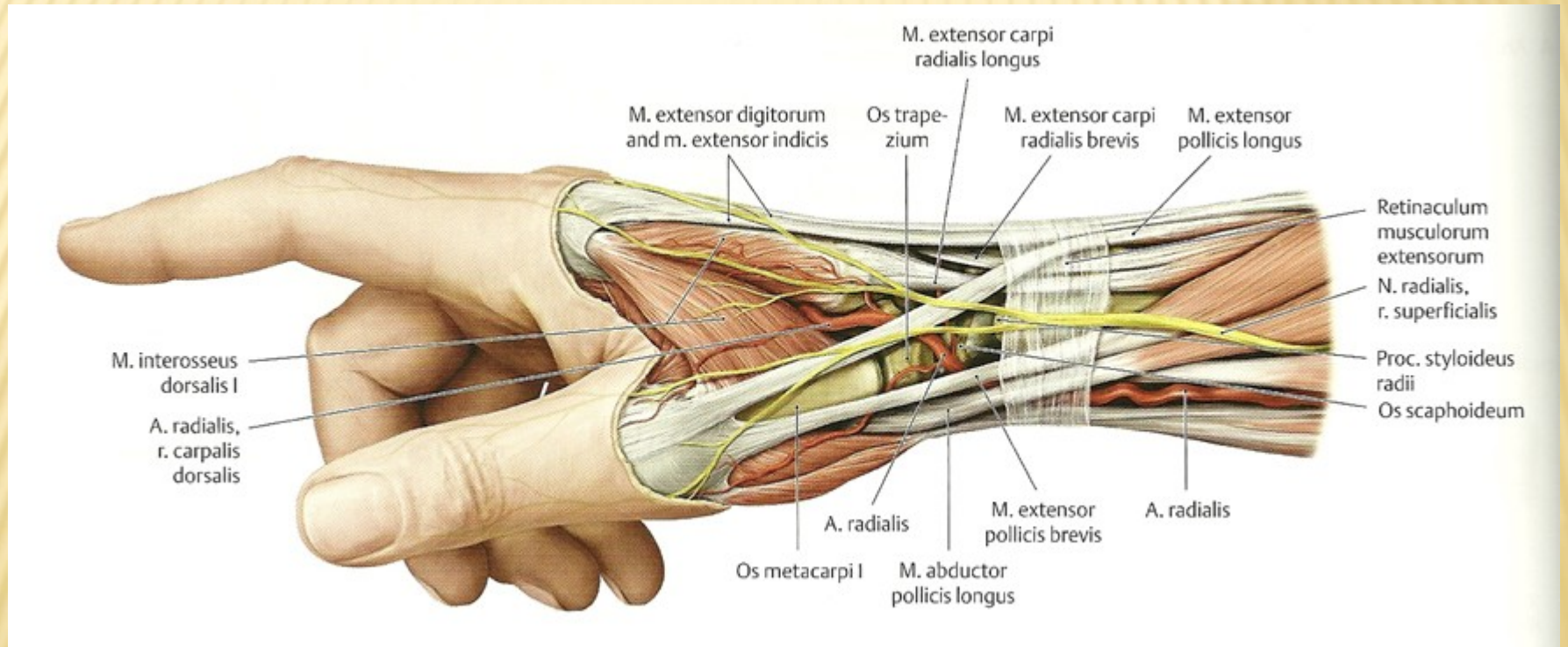
# LOBUS HEPATIS DEXTER, SINISTER



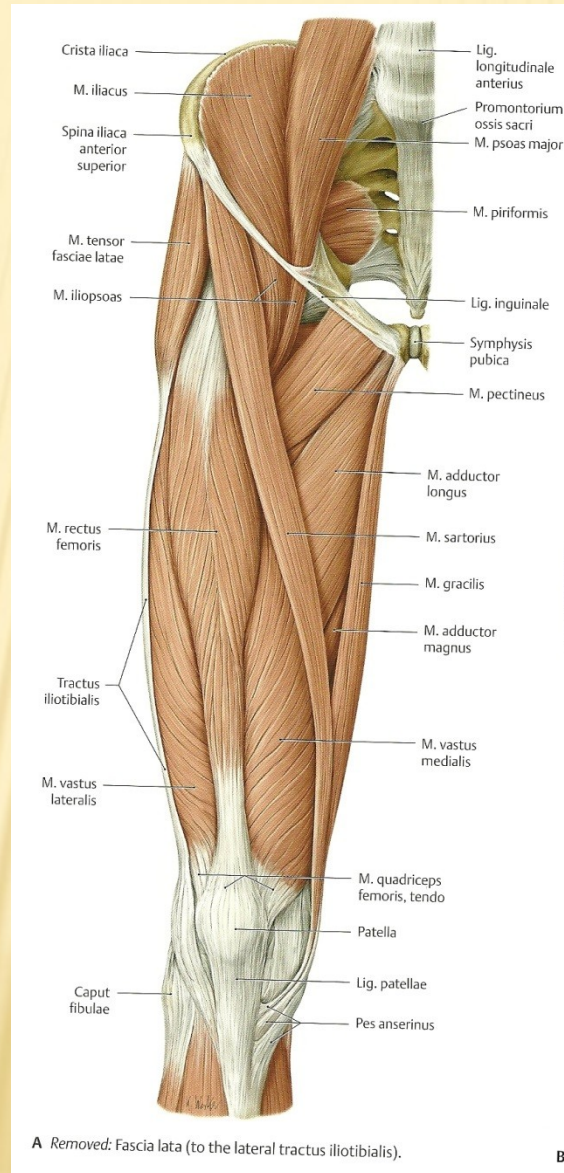
# MUSCULUS RECTUS, TRANSVERSUS ABDOMINIS



# MUSCULUS ABDUCTOR POLLICIS LONGUS

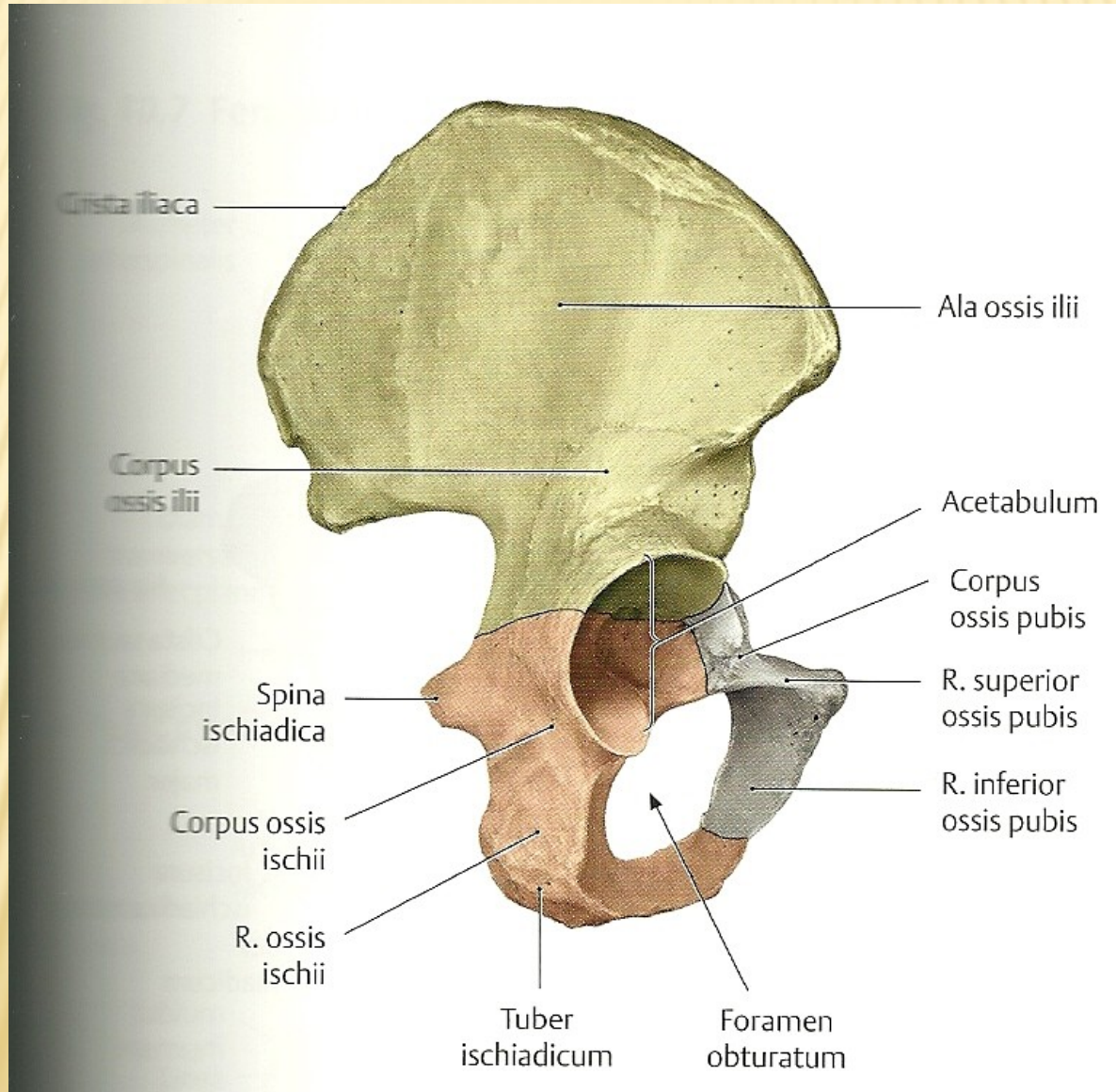


# MUSCULUS TENSOR FASCIAE LATAE

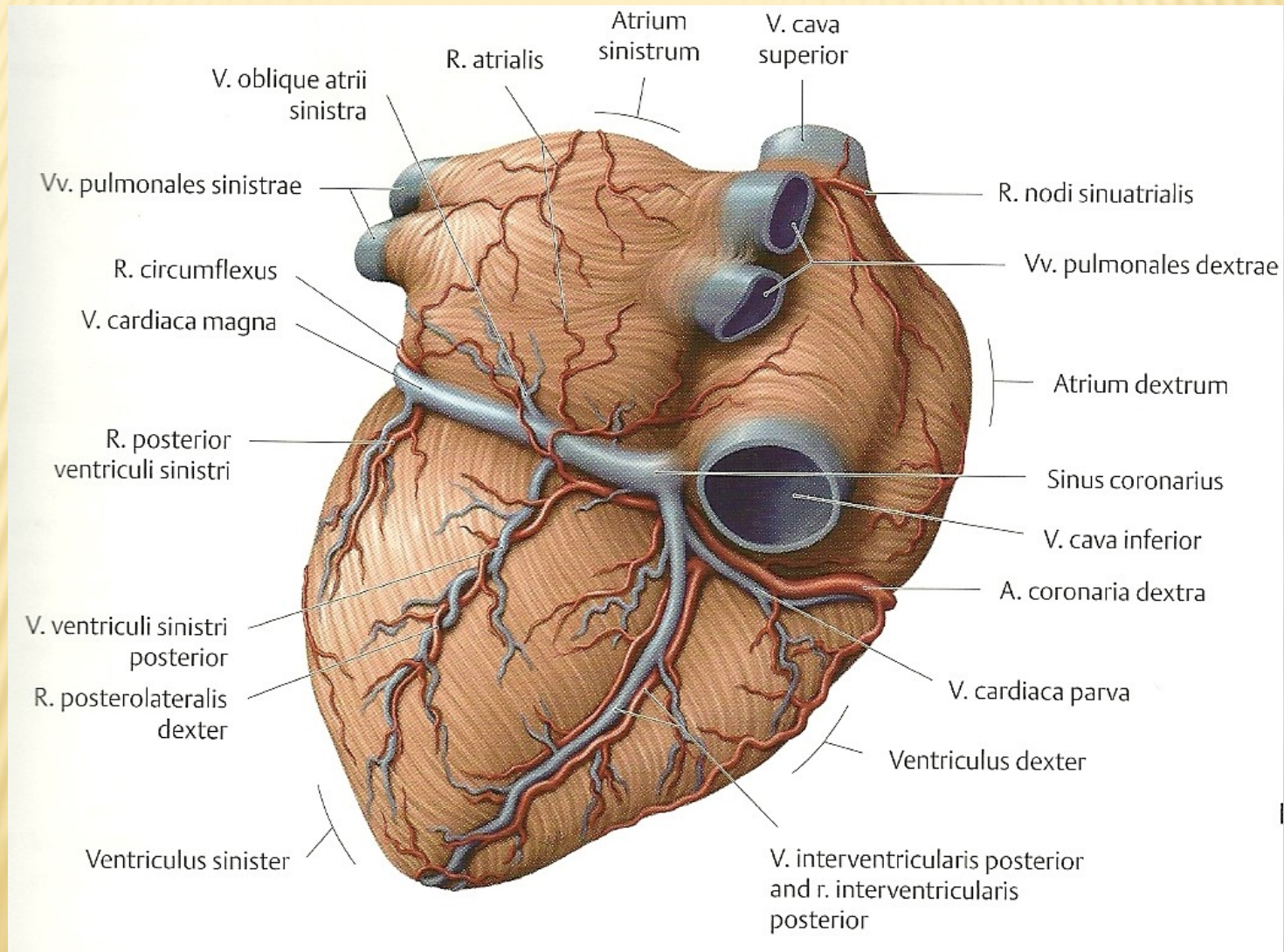




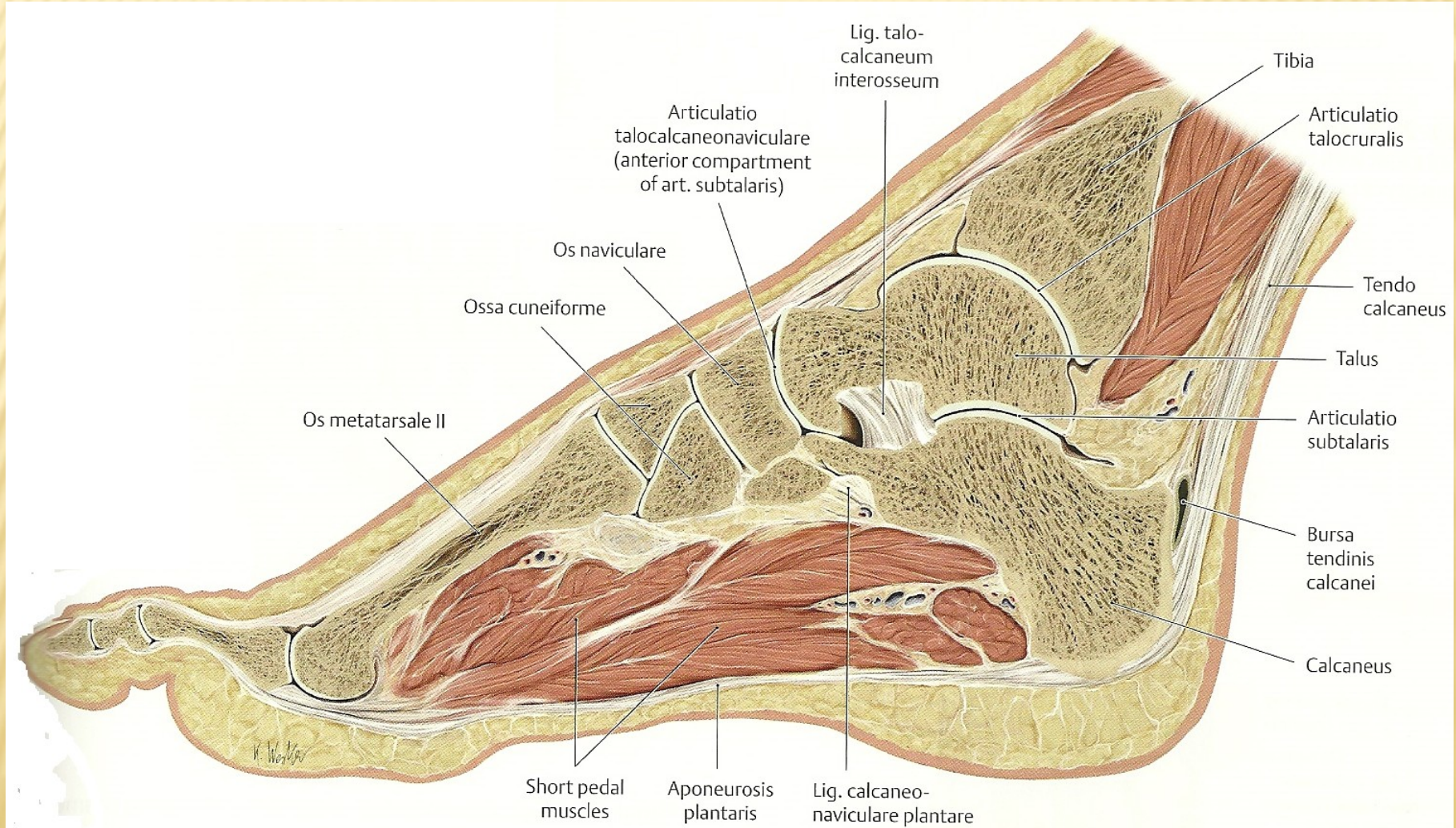
# OS ILIUM, OS ISCHII, OS PUBIS



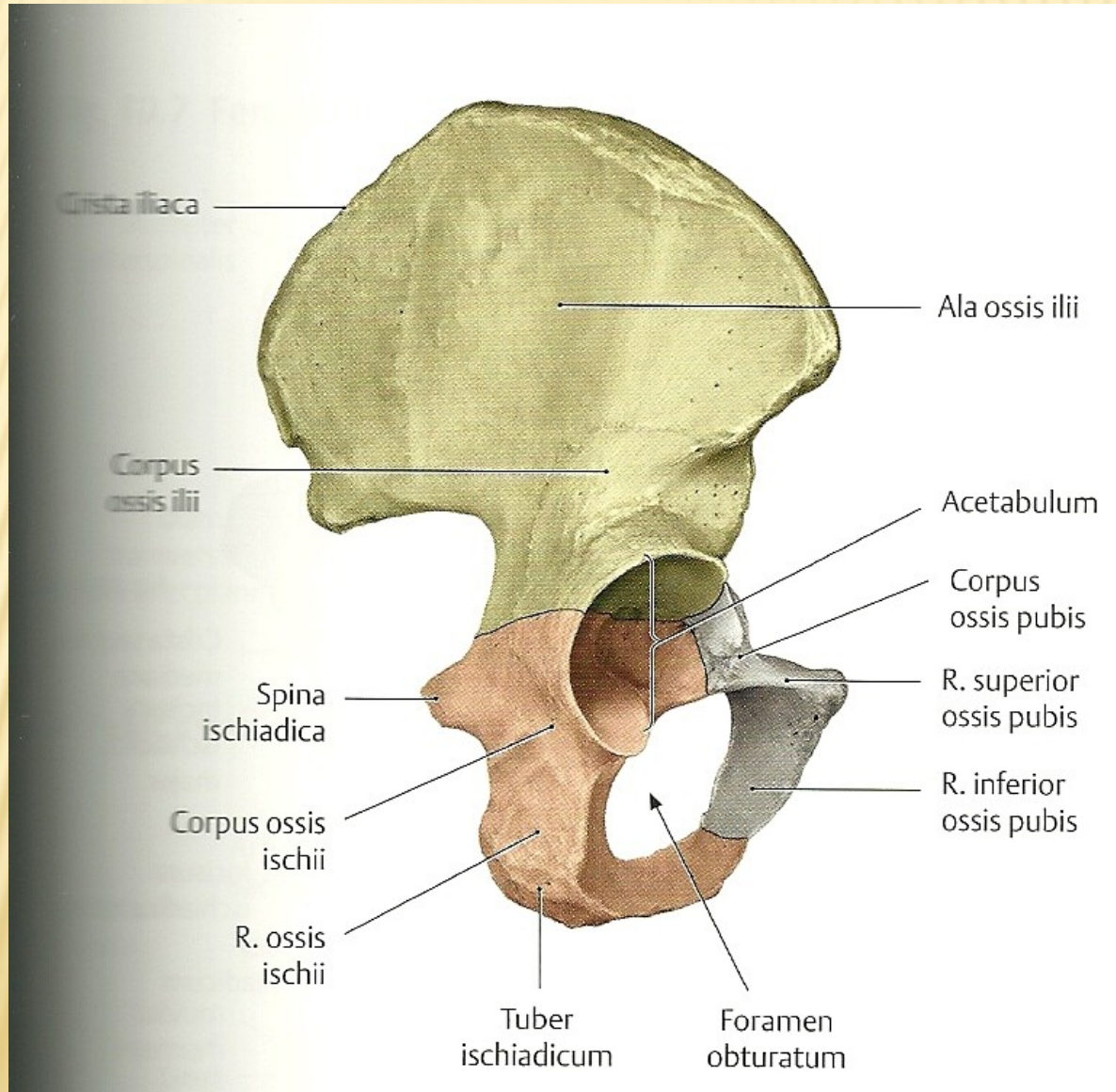
# VENA CORDIS MAGNA, PARVA



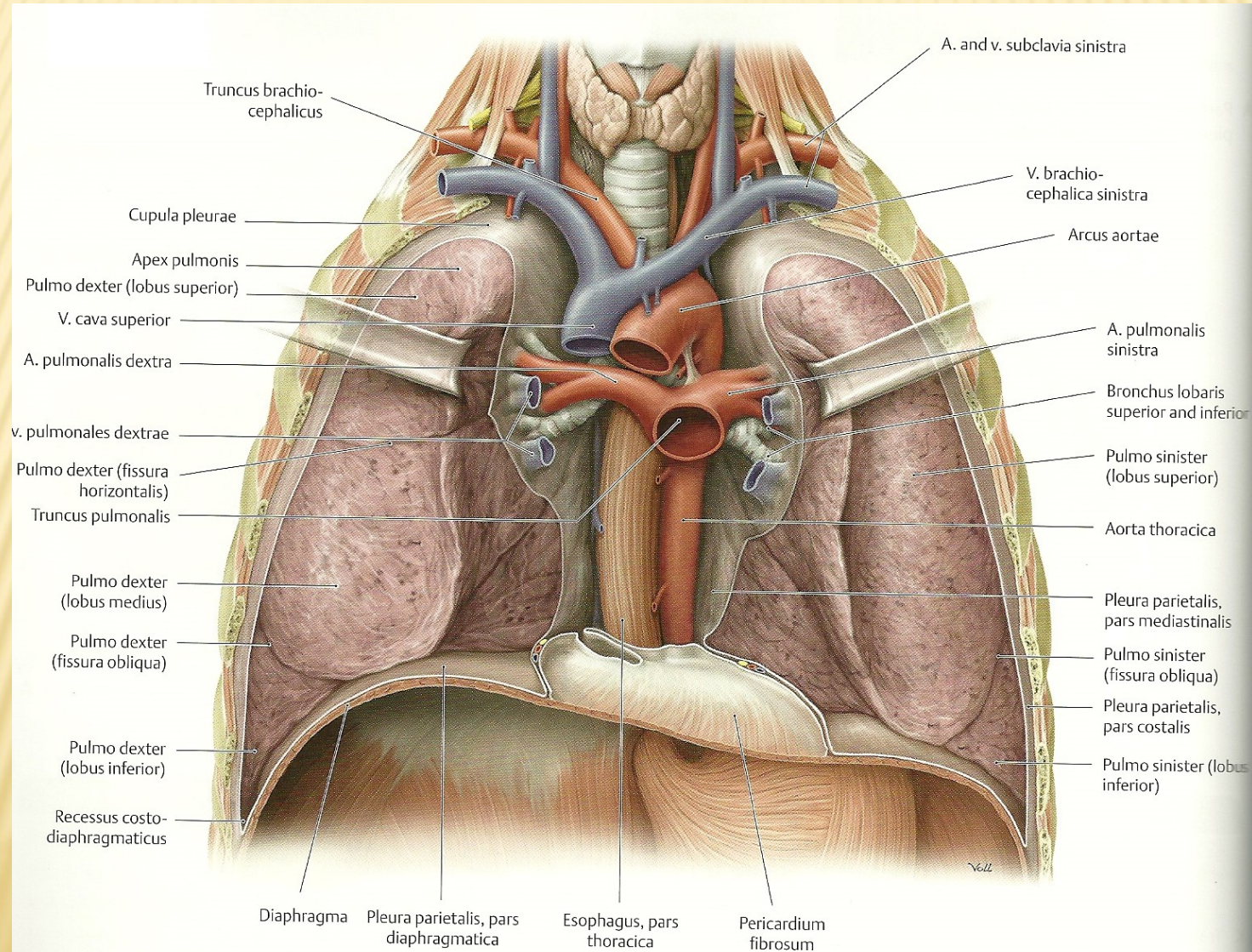
# TENDO CALCANEUS



# ALA OSSIS ILII

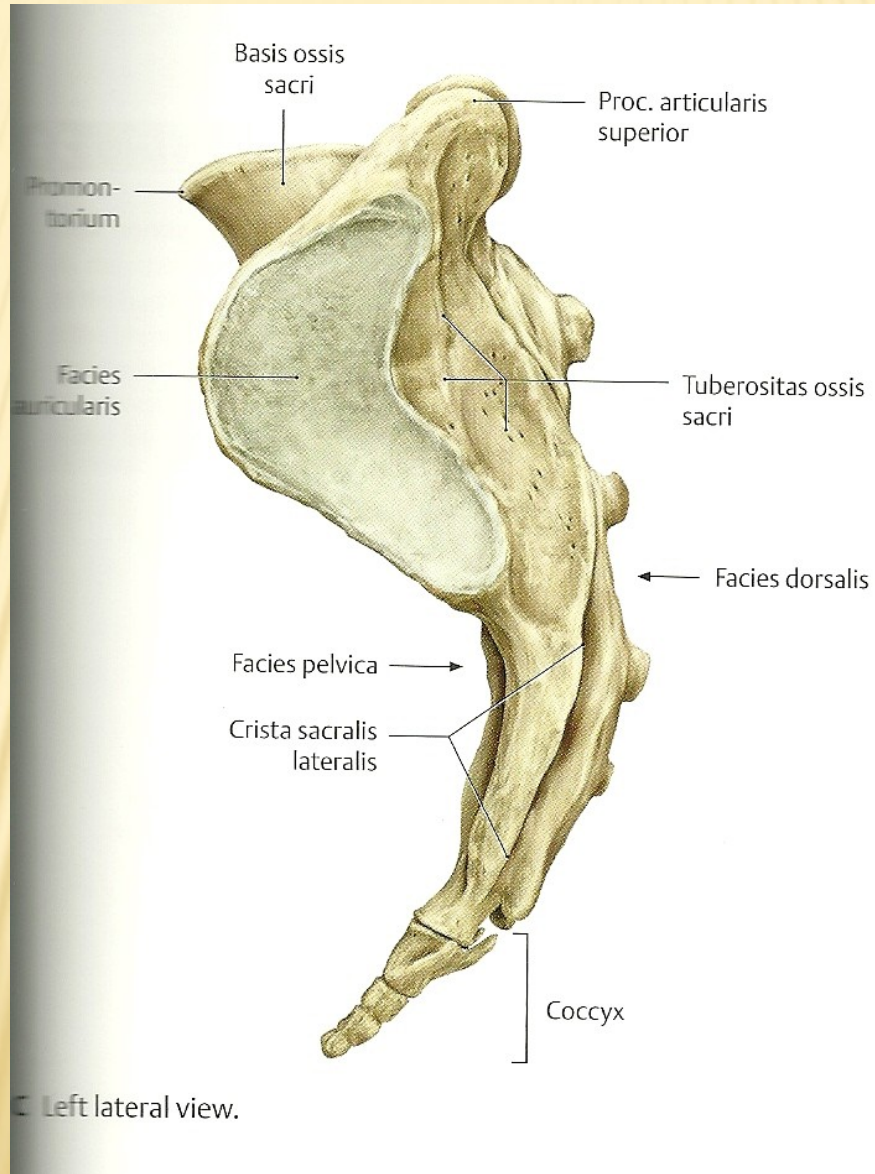


# APEX PULMONIS

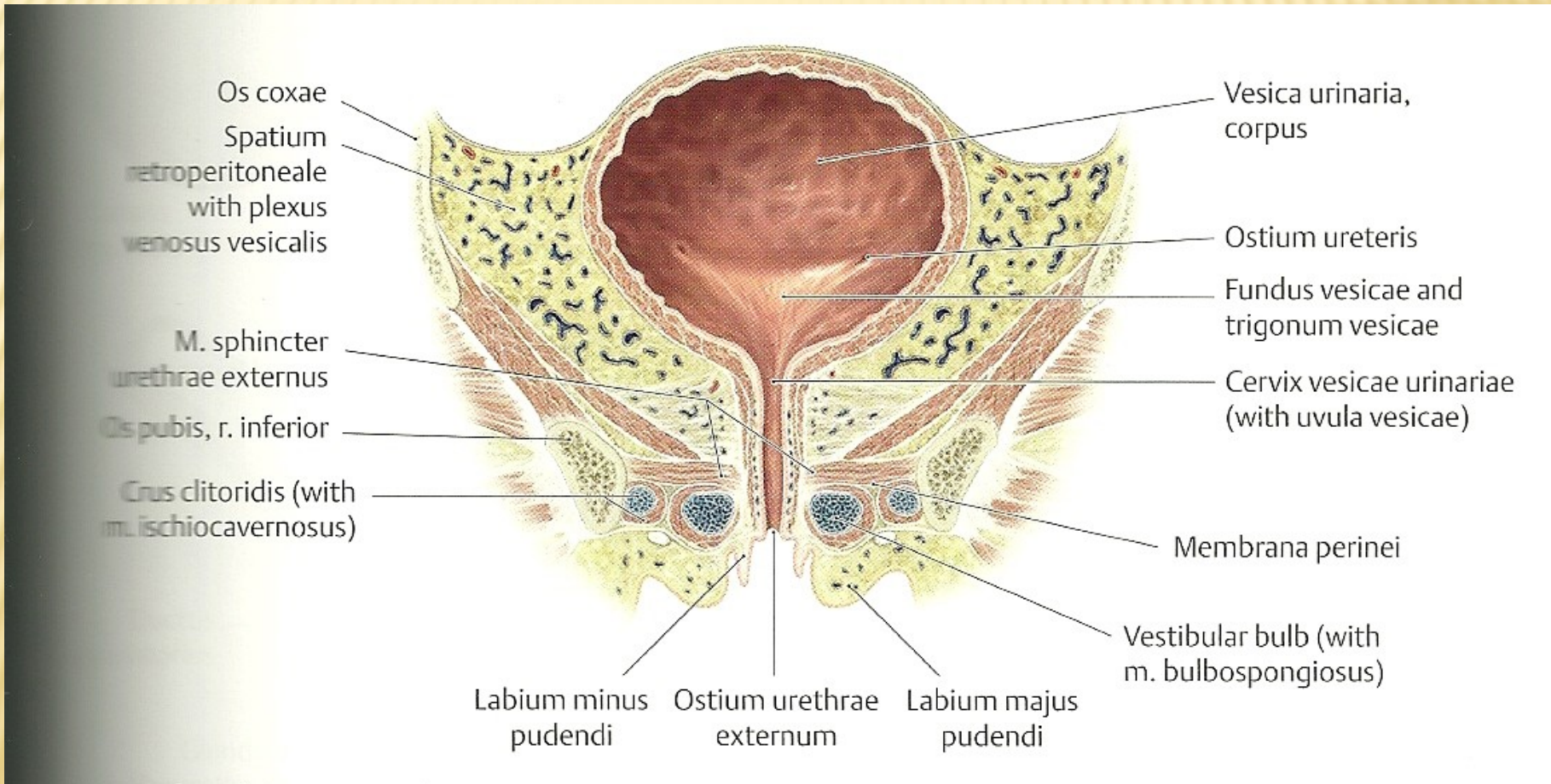


B Anterior view with lungs retracted.

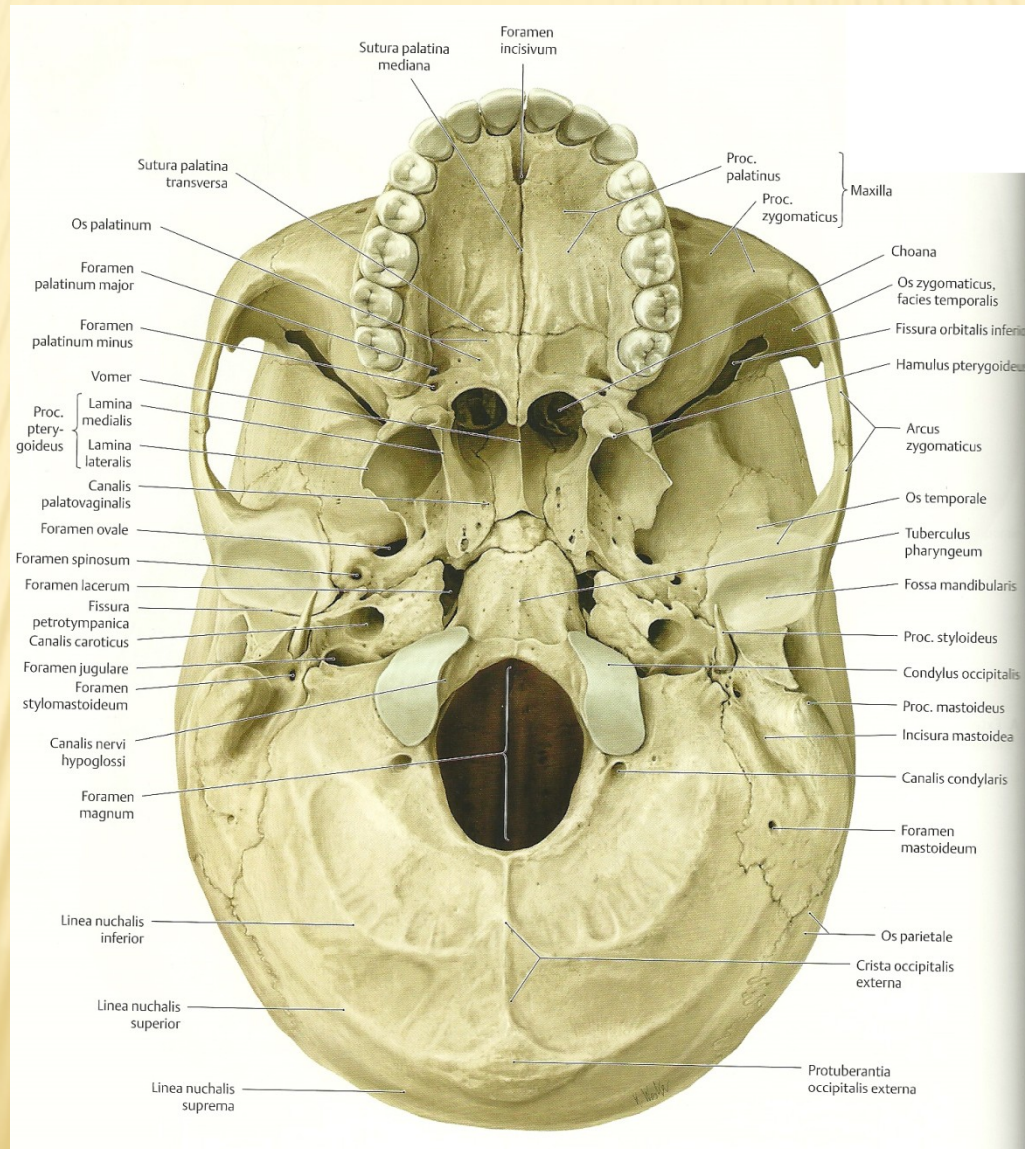
# BASIS OSSIS SACRI



# CERVIX VESICAE URINARIAE

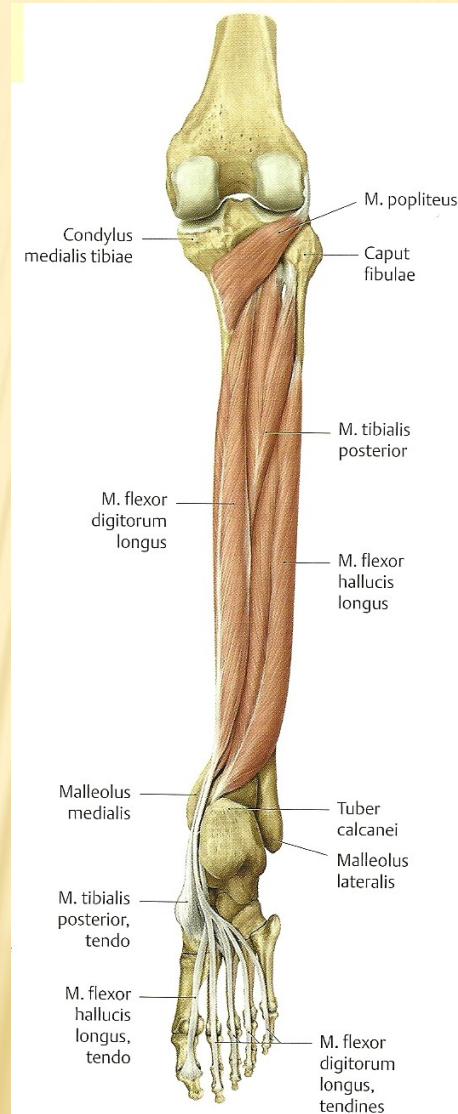


# FORAMEN MAGNUM

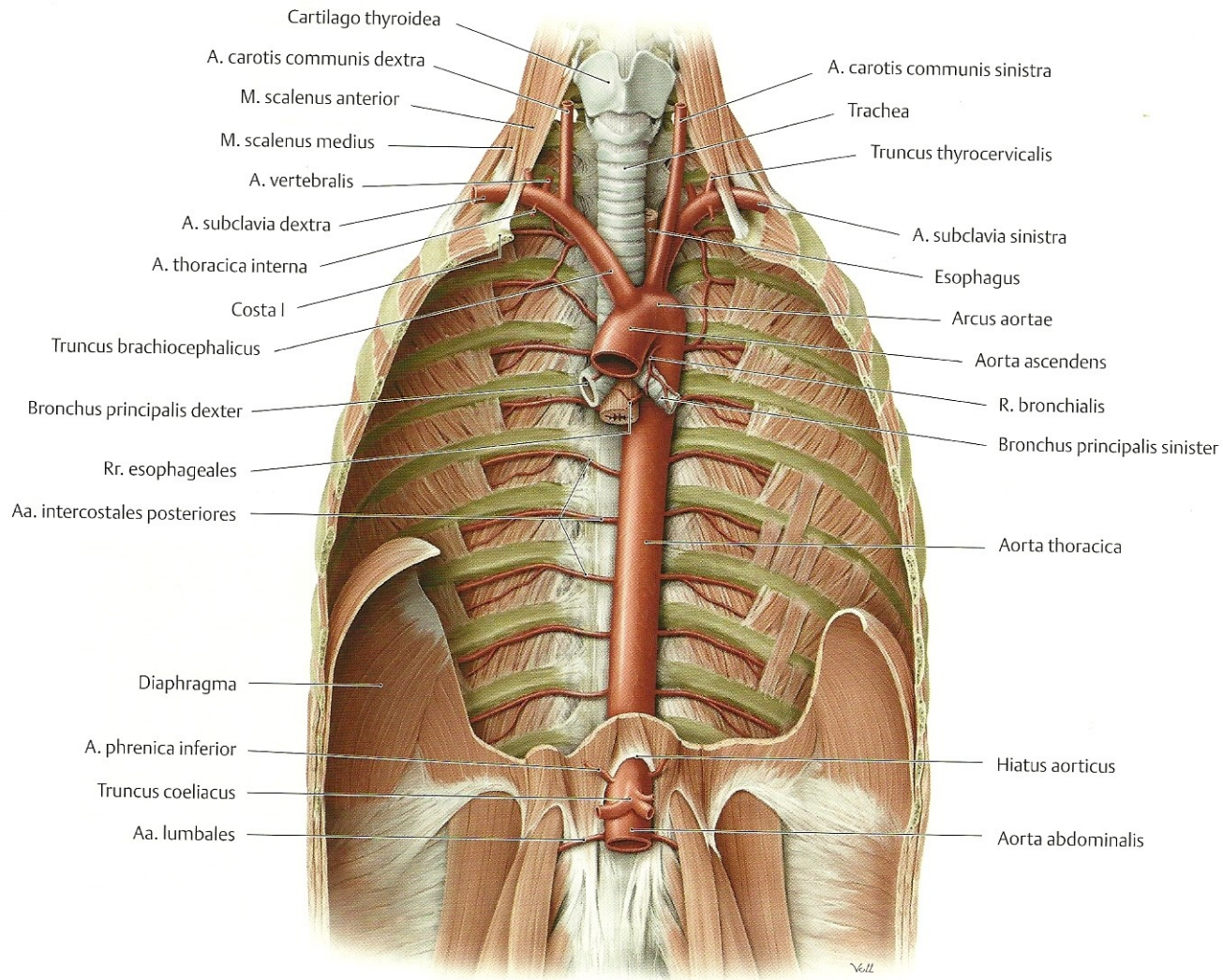




# MUSCULUS FLEXOR HALLUCIS LONGUS



# PARS THORACICA AORTAE



**B** Aorta thoracica in situ, anterior view. *Removed:* Heart, lungs, portions of diaphragma.