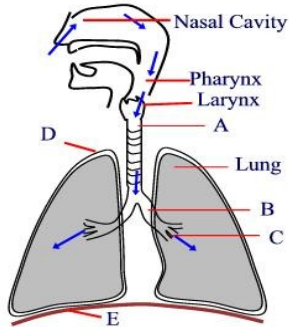


Given the QUESTION, identify the ANSWER

1. Exchange of air occurs in _____ which are also known as 'air sacs'.

- A. alveoli B. alveolar ducts C. bronchi D. bronchioles

2. Identify bronchus in this diagram.



3. Identify the correct sequence of the pathway through which air travels after entering the body.

- A. Larynx, pharynx, trachea bronchioles
B. Pharynx, larynx, trachea, bronchioles
C. Pharynx, larynx, bronchioles, trachea
D. Pharynx, trachea, larynx, bronchioles

4. Which process does not occur in the nasal cavity?

- A. Trapping of large foreign bodies
B. Exchange of gases
C. Humidification of inhaled air
D. Warming of inhaled air

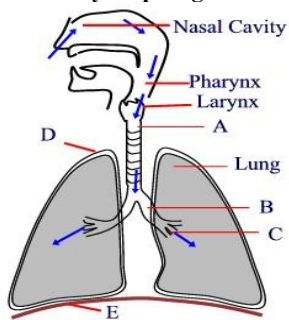
5. Normal rate of respiration in an adult human being is _____ times/ minute.

- A. 10-12 B. 12-14 C. 16-18 D. 22-24

6. What does spirometer measure?

- A. Capacity of lungs
B. Volume of air inhaled and exhaled
C. Residual air
D. All of these

7. Identify diaphragm in this diagram.



8. Complete the equation:

Glucose + Oxygen = _____ + Water + CO₂

- A. Energy B. Sucrose C. Starch D. None of these

9. What is the leaf-like structure which prevents the entry of food into respiratory passages?

- A. Epiglottis B. Larynx C. Pharynx D. Tongue

10. Which part of the respiratory tract is also known as the voice box?

- A. Larynx B. Pharynx C. Trachea D. Epiglottis

11. Which cells of the blood carry oxygen to different parts of the body?

12. True or false? Trachea contains 16-20 'C'-shaped cartilaginous rings.

True

False

13. True or false? Breathing through the mouth is considered as good as breathing through the nose.

True

False

14. True or False? Exhalation and inhalation of air is known as "cellular respiration".

True

False

15. True or false? Two-layered membrane which covers the lungs is known as pericardium.

True

False

16. What is a specialist of the respiratory system called?

17. Which respiratory disease do dyspnoea, wheezing and difficulty breathing most commonly characterize?

18. What difference is there between pulmonary arteries and other arteries in the body?

19. What is the difference between phlegm and sputum?

20. What is the test called in which a camera is introduced into the lungs via the trachea?

21. What are the two medical terms for Adam's apple?

22. A surgical operation to make a hole through the throat into the windpipe, so as to allow air to get to the lungs in cases where the trachea is blocked. After the operation, a tube is inserted into the hole to keep it open. The tube may be permanent if it is to bypass an obstruction, but can be removed if the condition improves. What are the names of the two procedures (cutting and making an opening) involved in the operation?

Write down two more questions of your own to which you know the answers.