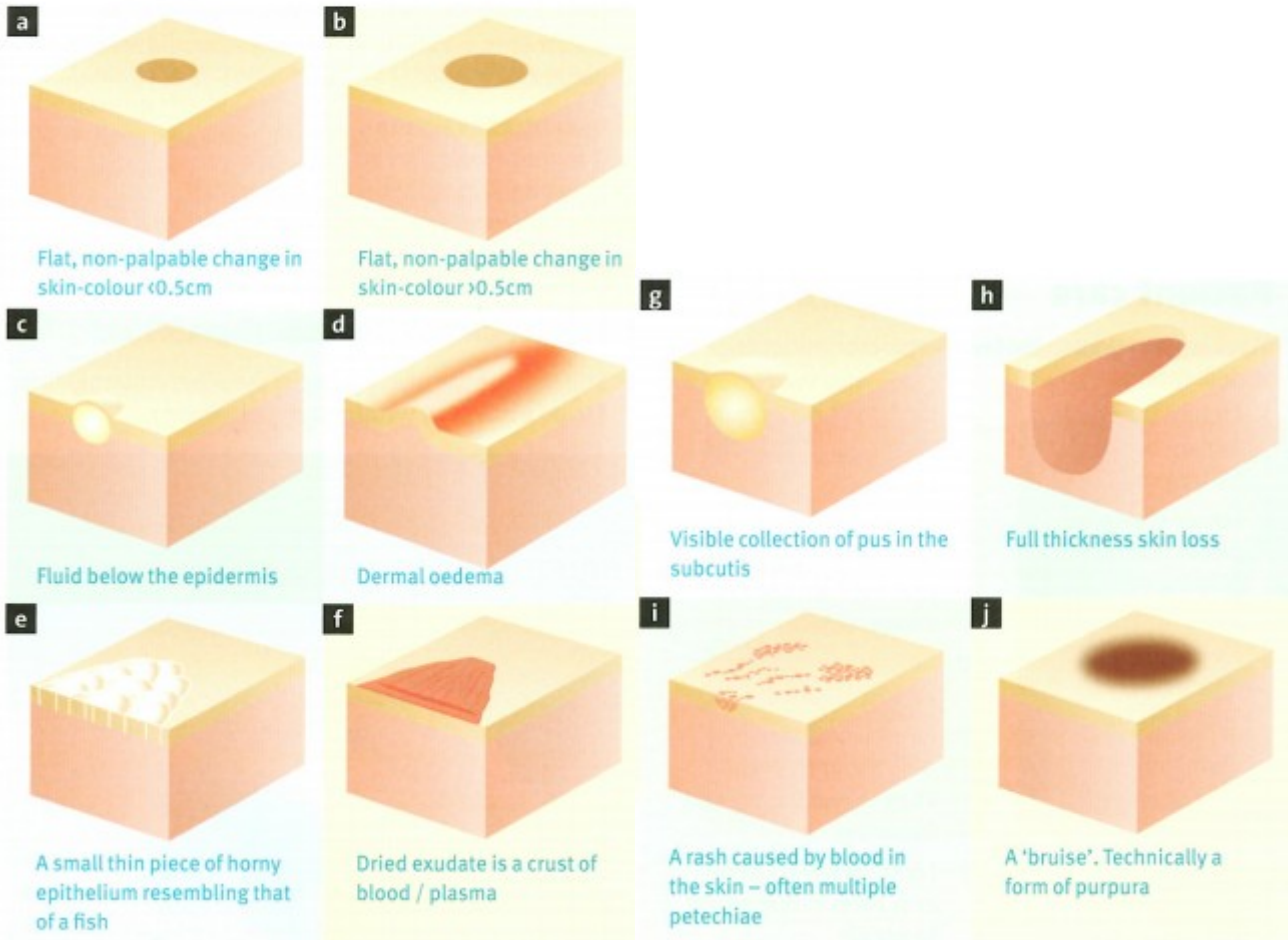


Vocabulary

Lesions

- 1 Work in pairs. What lesions do the diagrams show? When you have answered as many as you can, look at the list at the bottom to help you.



Listening 1

Listening for details

crust ecchymosis macule patch
 purpura pustule ulcer vesicle
 wheal scale

- 2 In groups, discuss how you distinguish between lesions, for example, between a wheal and a plaque? Give an example of a condition in which you would see each of these lesions.
- 3 Which lesions would you associate with these verbs: *itch, ooze, discharge, spread, scab, harden*?

- 1 Listen to the extract of a conversation between Dr Jackson and John Dodds. Write as many details as possible. You may have to listen twice.
- 2 Work in pairs. One student reads their notes to their partner and they check any differences.
- 3 Listen again and check for detail.
- 4 Can you improve on the doctor's questions?
- 5 Map the doctor's questions: open, closed, leading, etc.
- 6 What other reassuring statements could the doctor have used?
- 7 Which diagram in *Vocabulary* matches the conversation?