

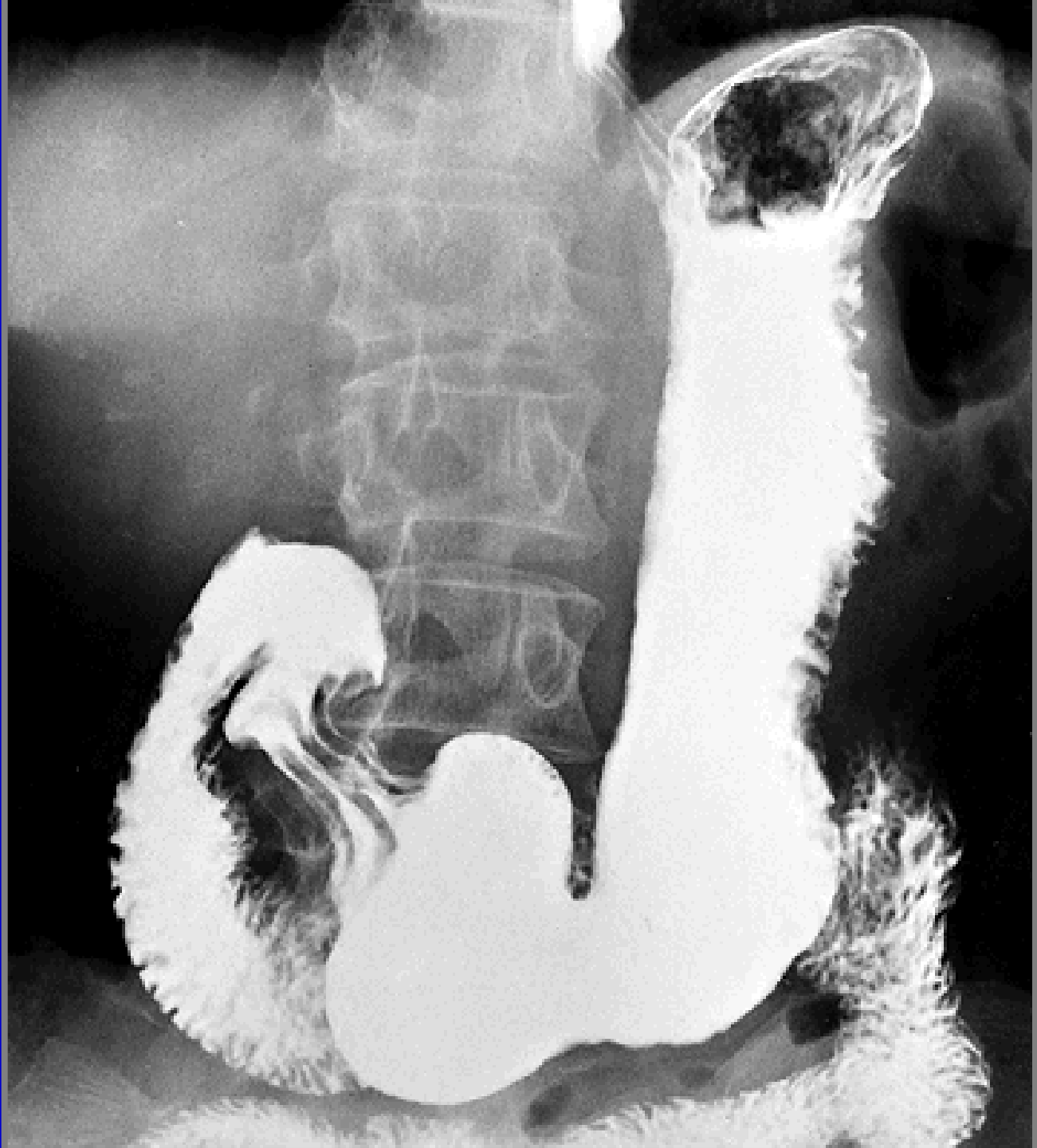


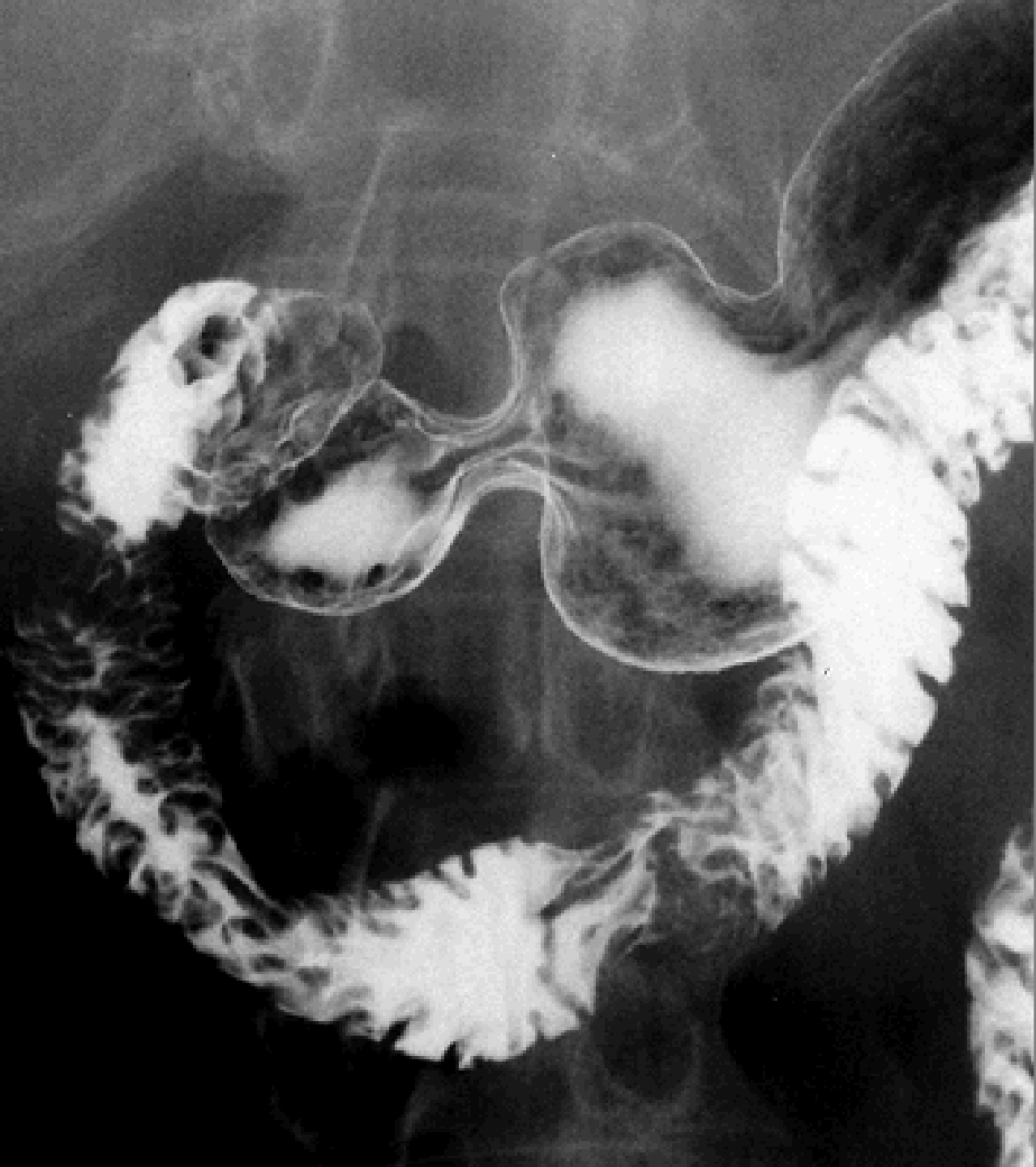


Oesophagografie

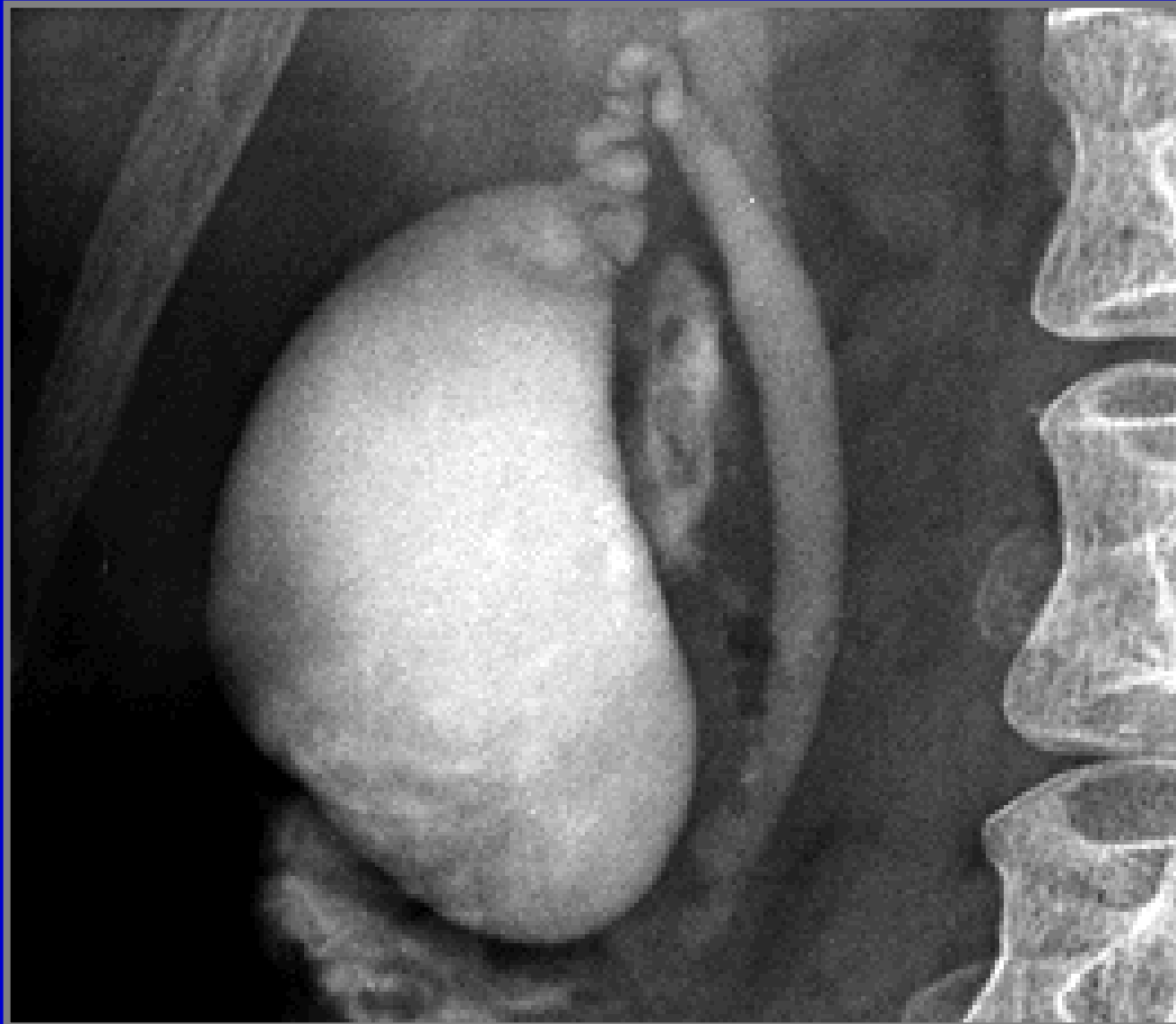


Gastrografie





Cholecystografie



Irigografie



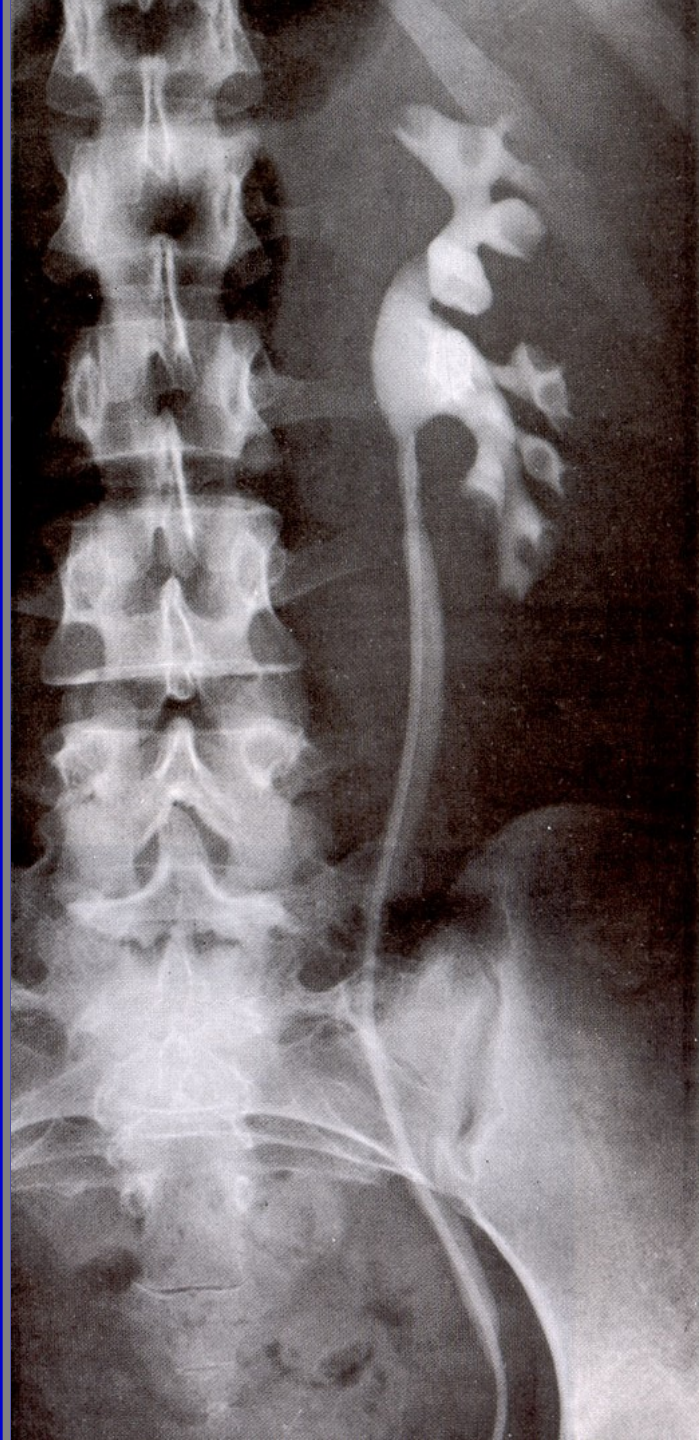
Bronchografie



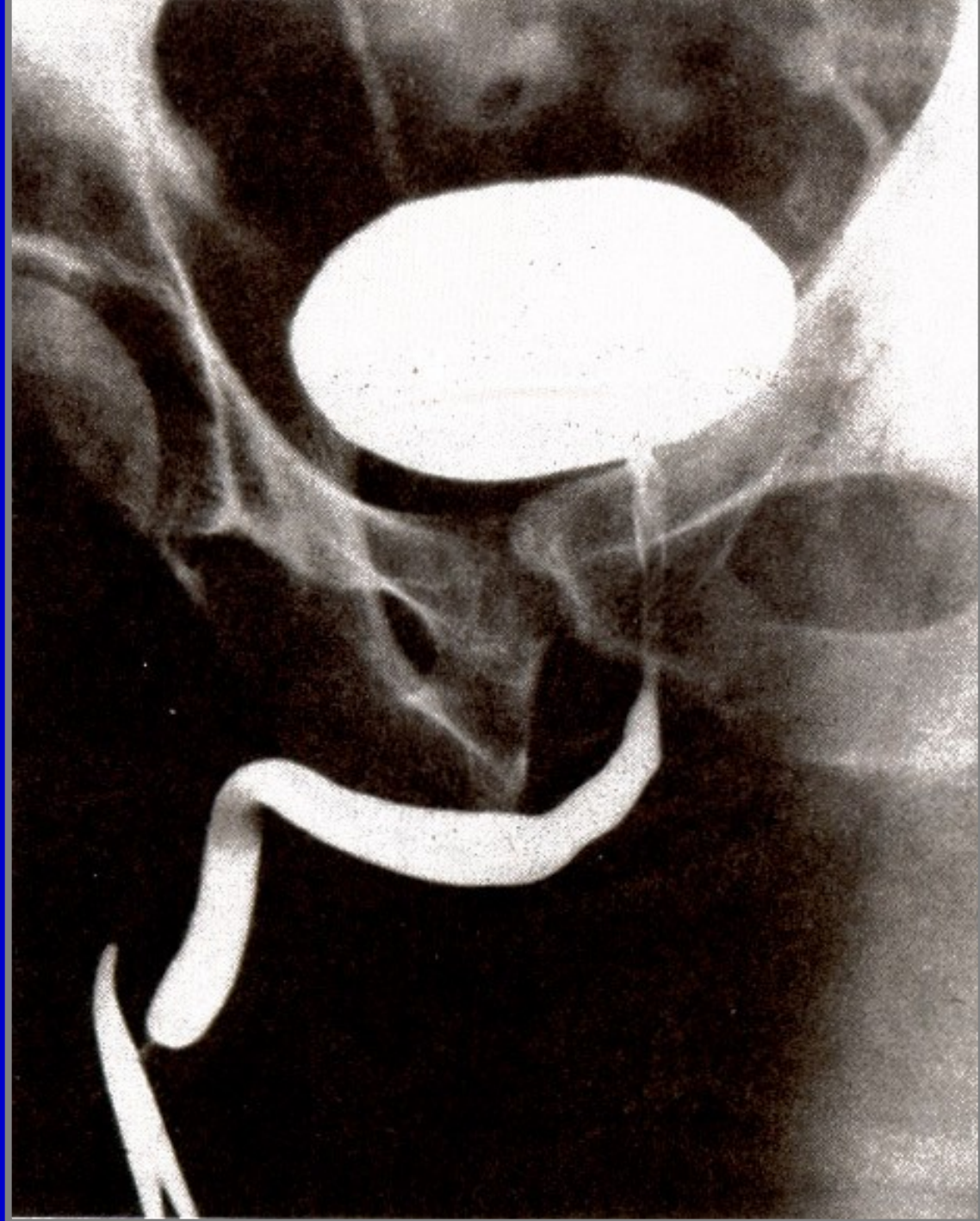
Vylučovací urografie



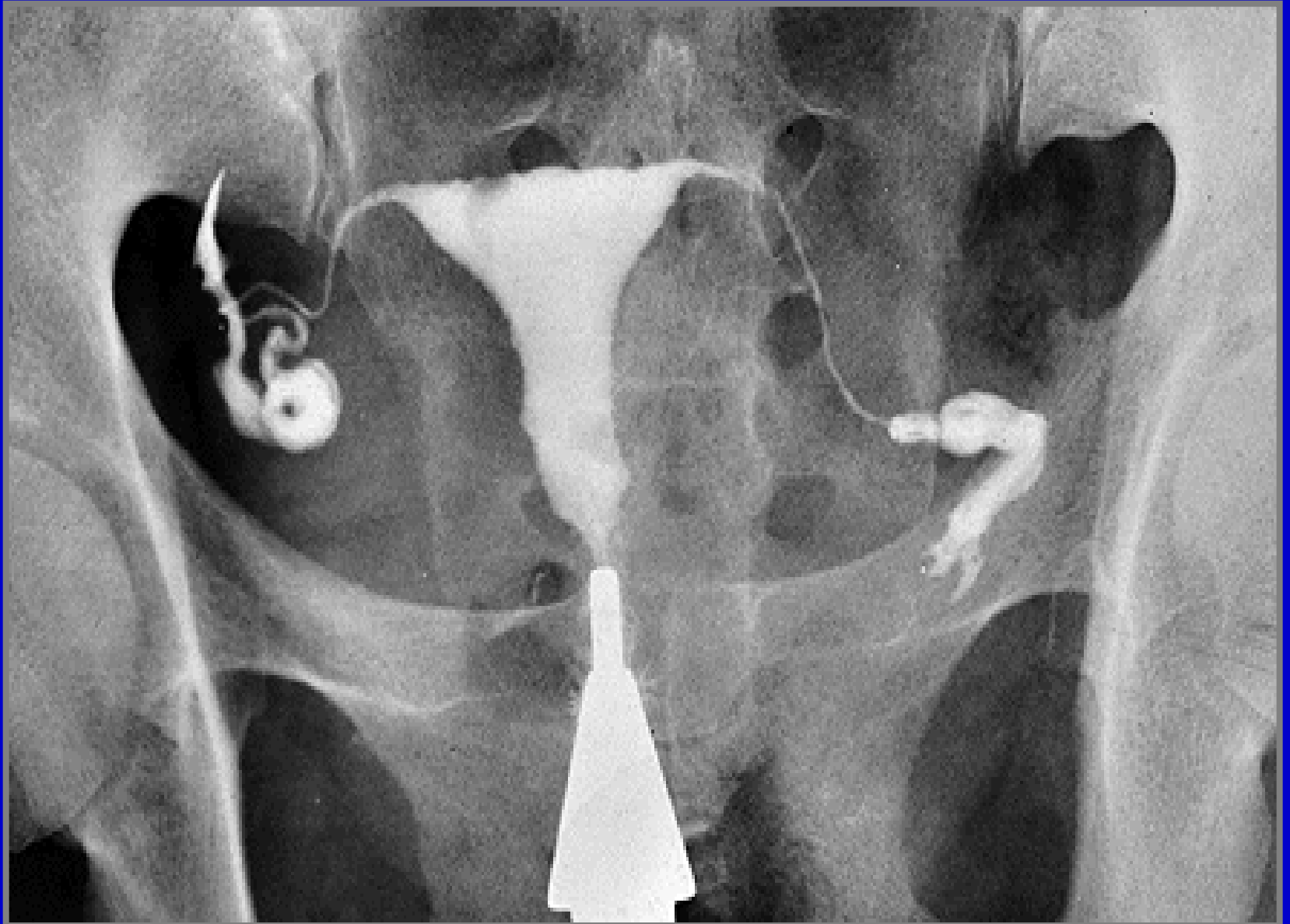
Ascendentní pyelografie



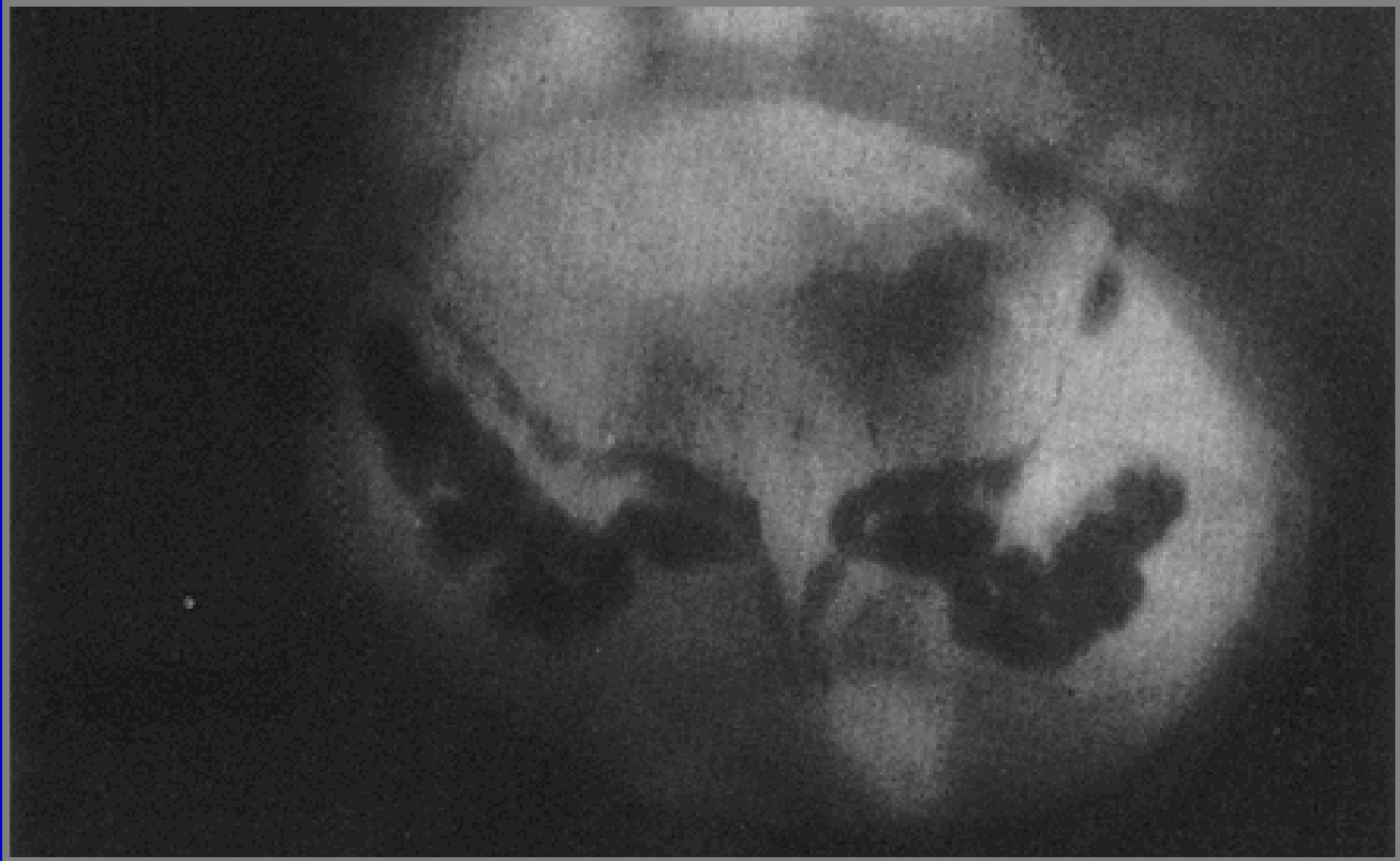
Cystografie

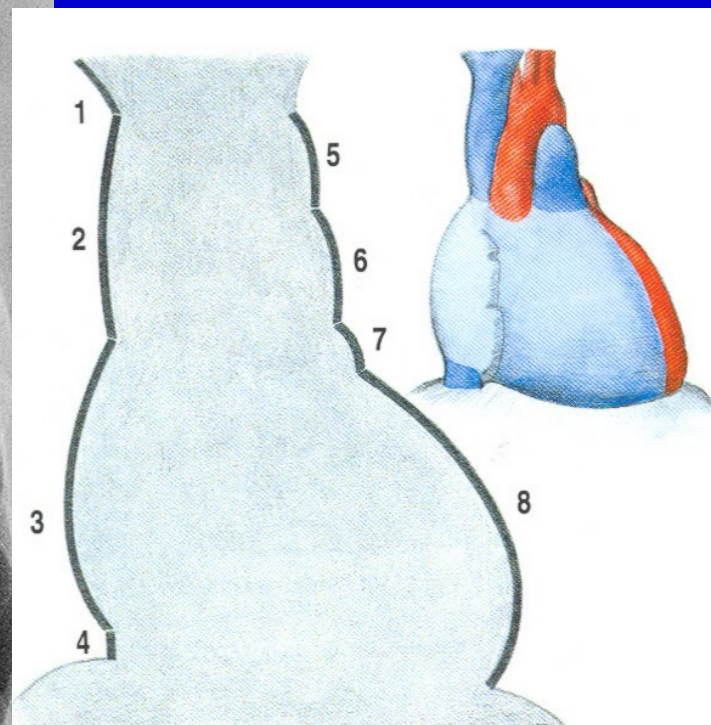
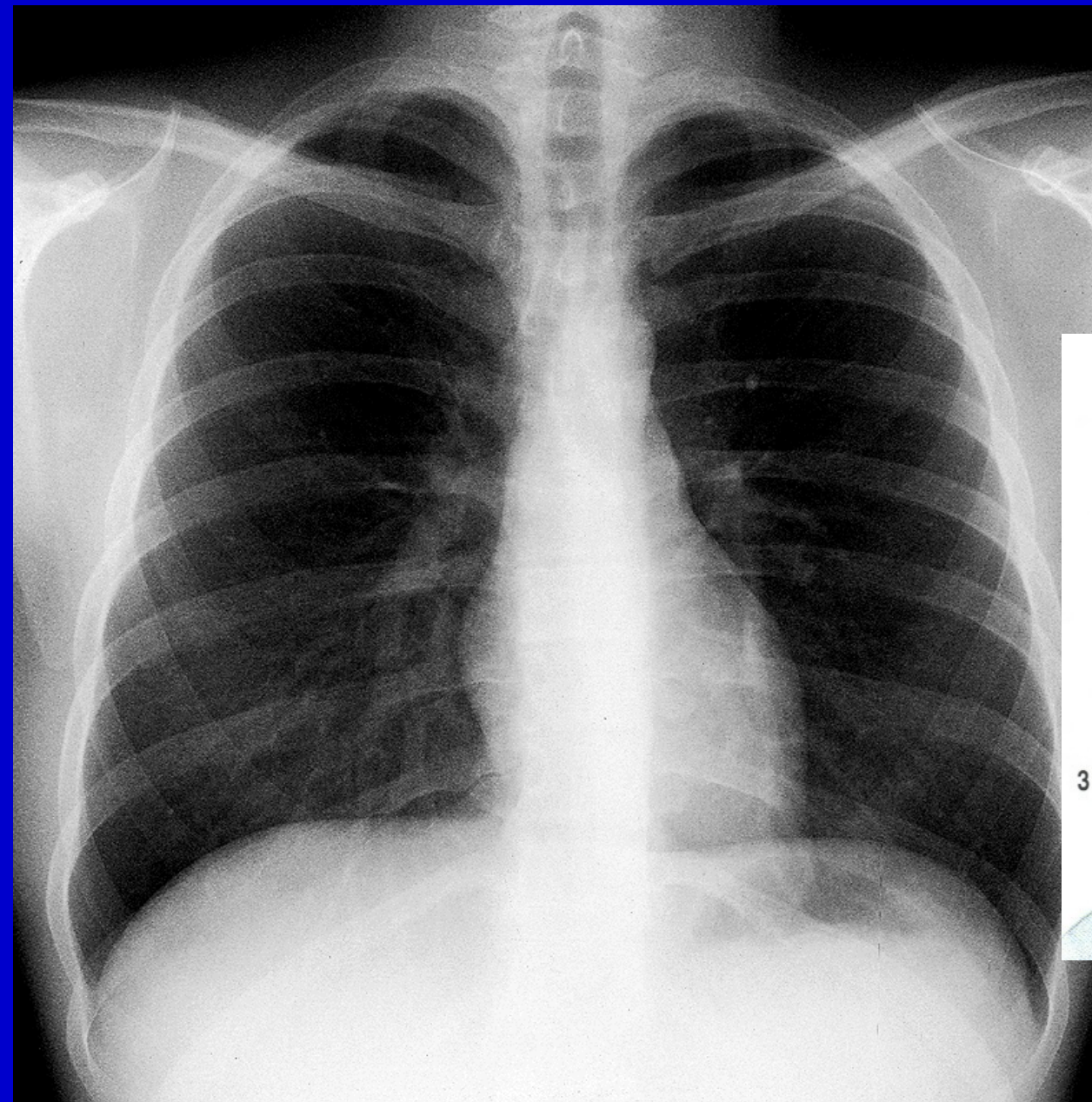


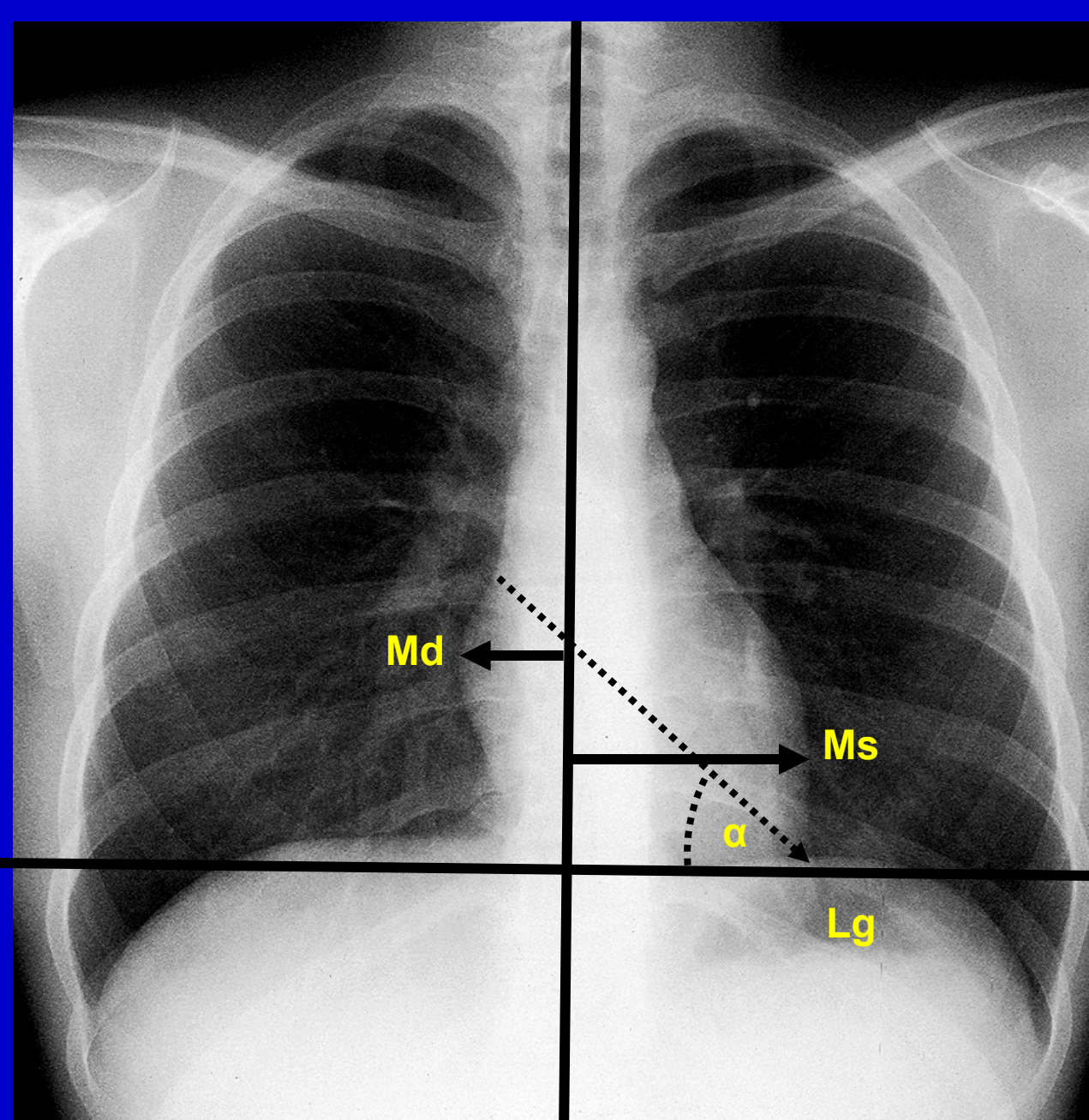
Hysterosalpingografie



Spermatocystografie







Md - distantia mediodextra
4 - 4,5 cm

Ms - distantia mediosinistra
8 - 9 cm

Srdeční transversála
Md + Ms = do 15 cm

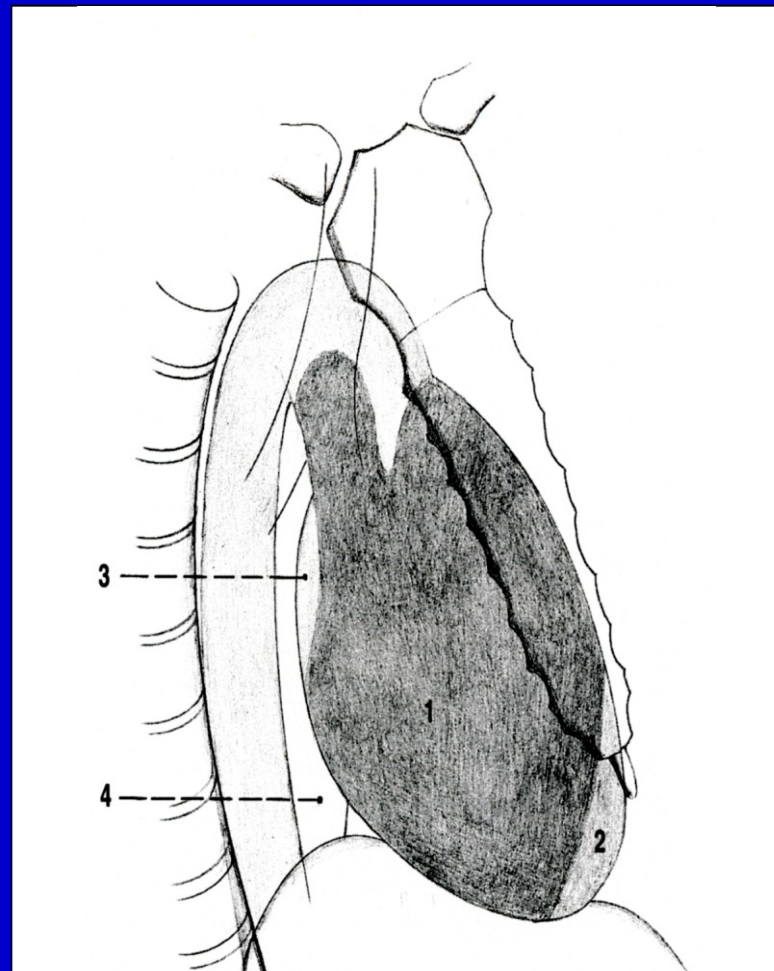
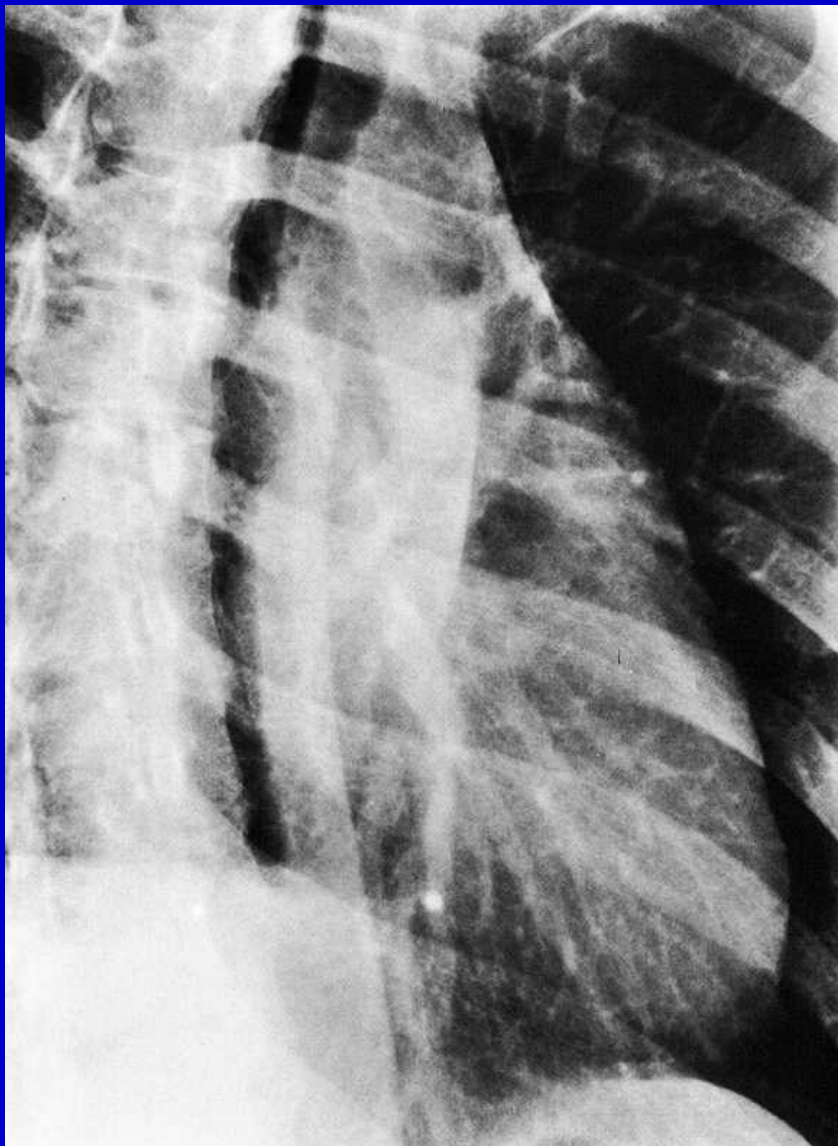
Lg (longitudo) - délka srdce

úhel α - sklon srdce 45°

horizontála

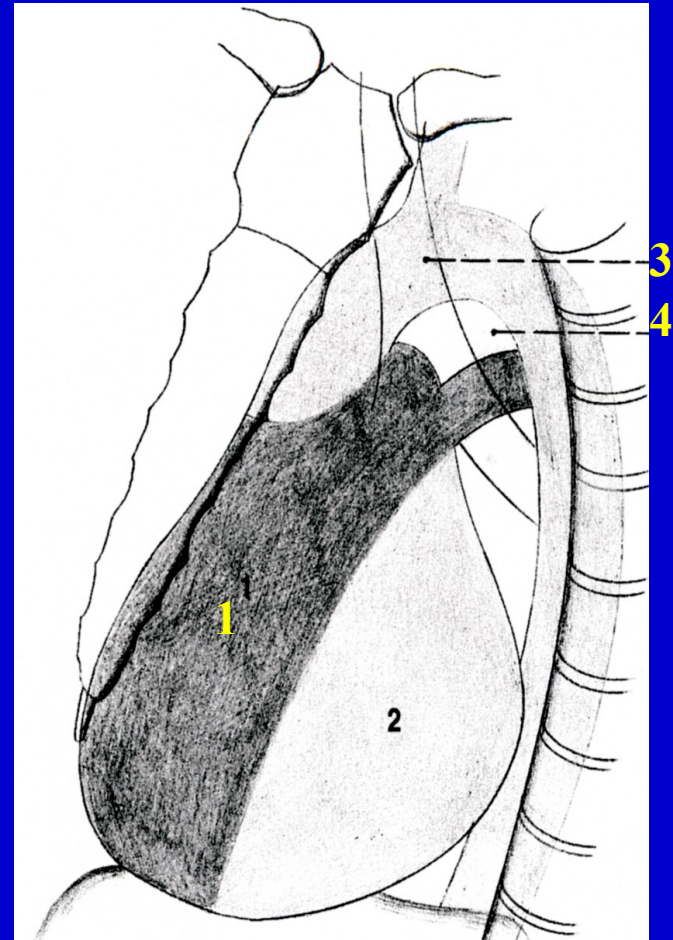
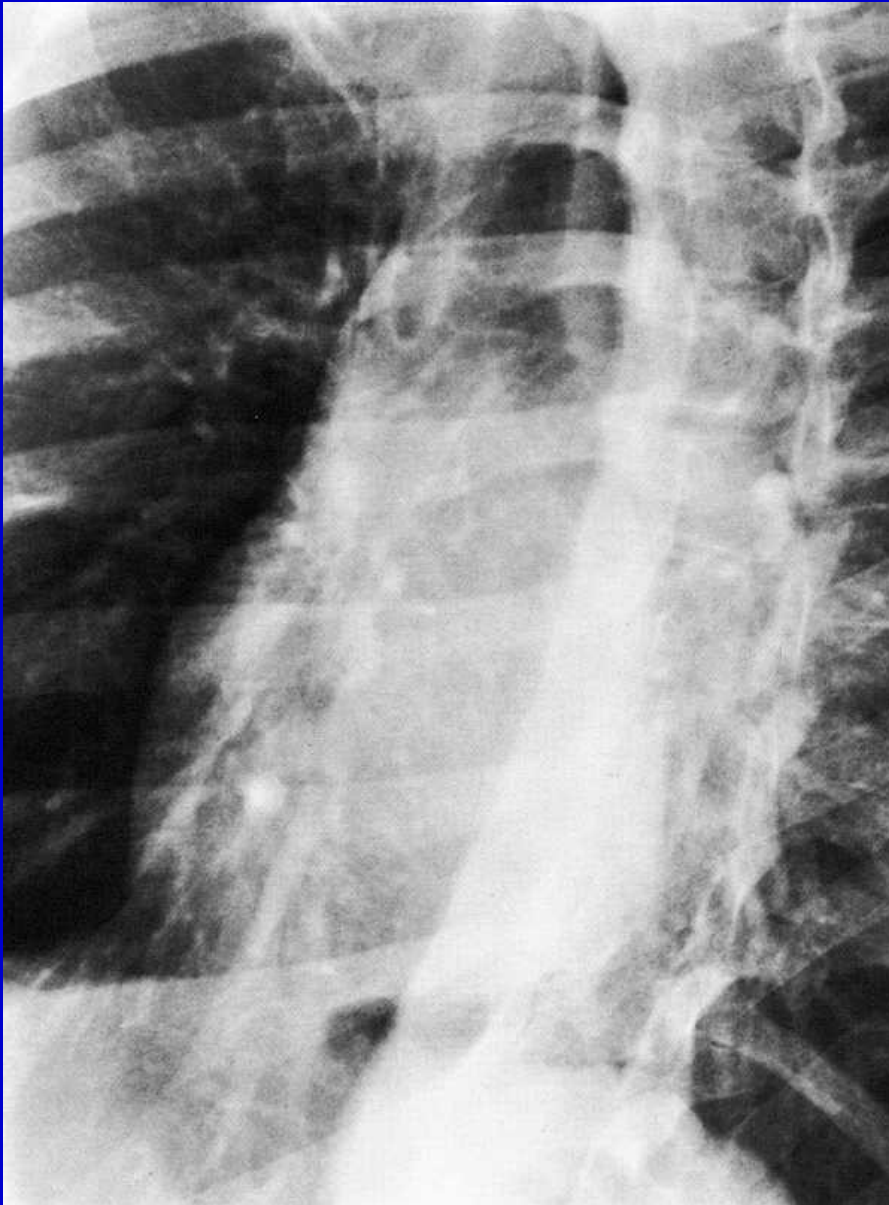
mediánní rovina

Pravá šikmá projekce (šermířská)



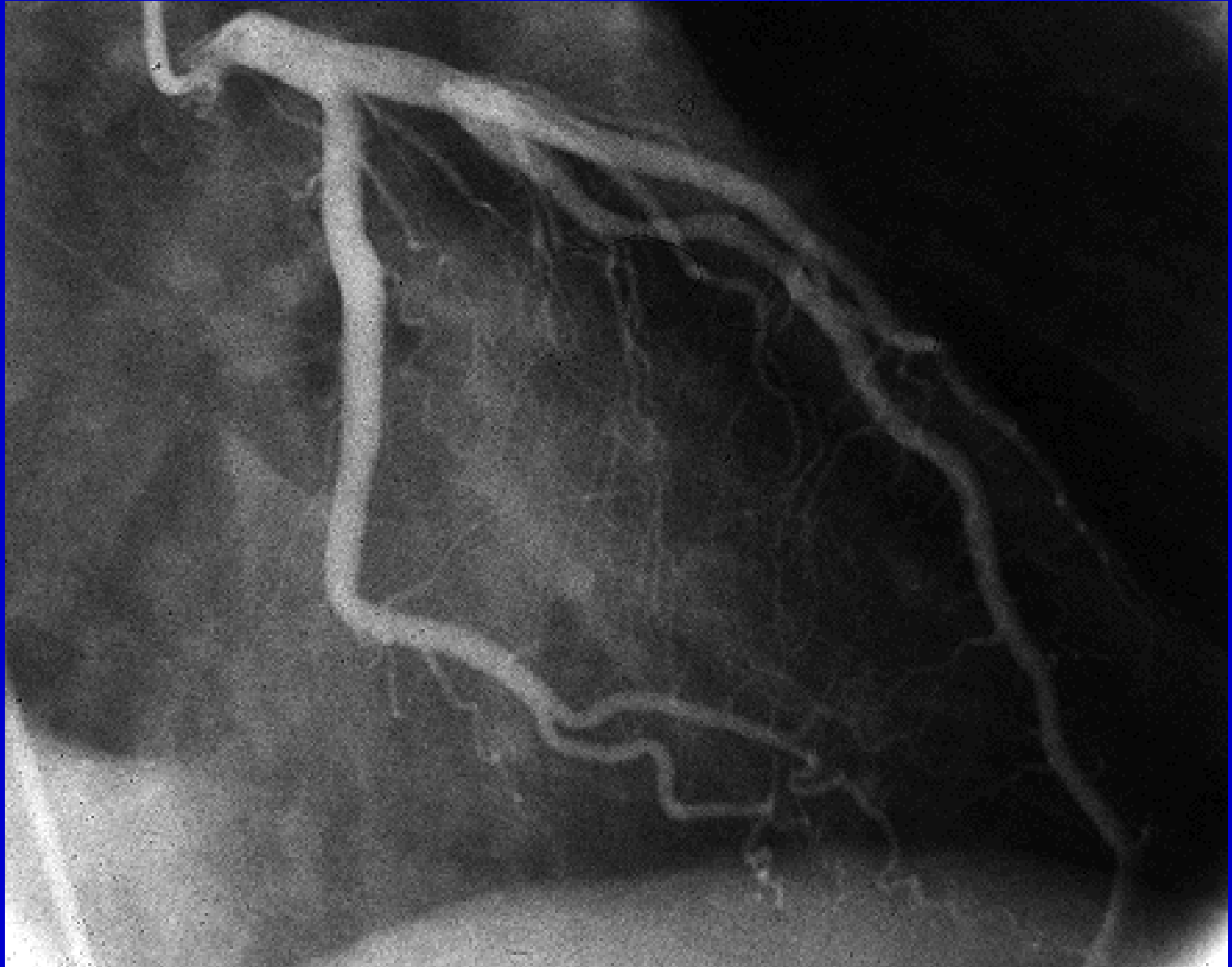
- 1 pravá předsíň a komora
truncus pulmonalis
- 2 levá komora
- 3 levá předsíň
- 4 Holzknichtovo pole (jícen, aorta)

Levá šikmá projekce (boxerská)

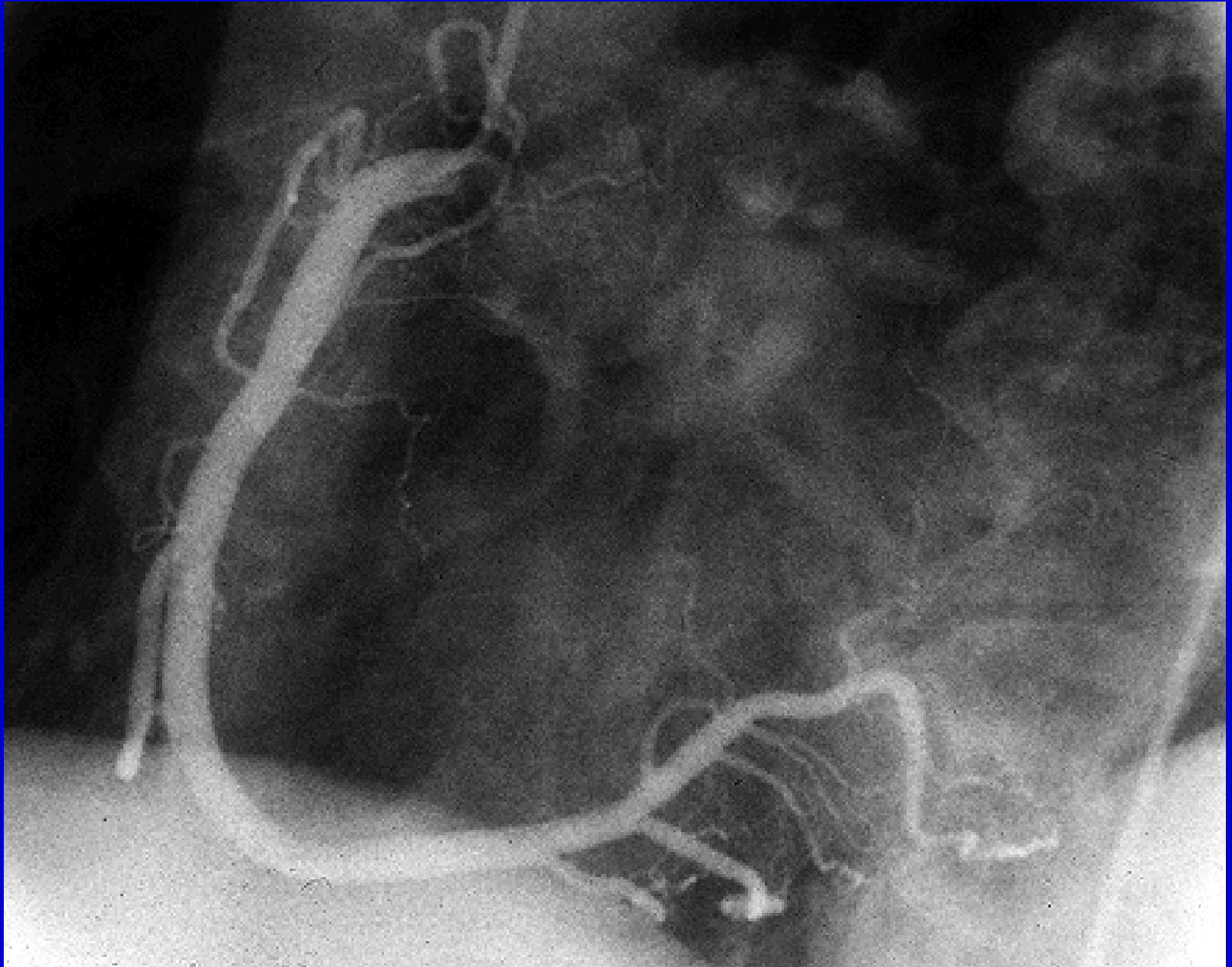


- 1 pravá předsíň a komora,
truncus pulmonalis
- 2 levá komora
- 3 arcus aortae
- 4 aortální okno

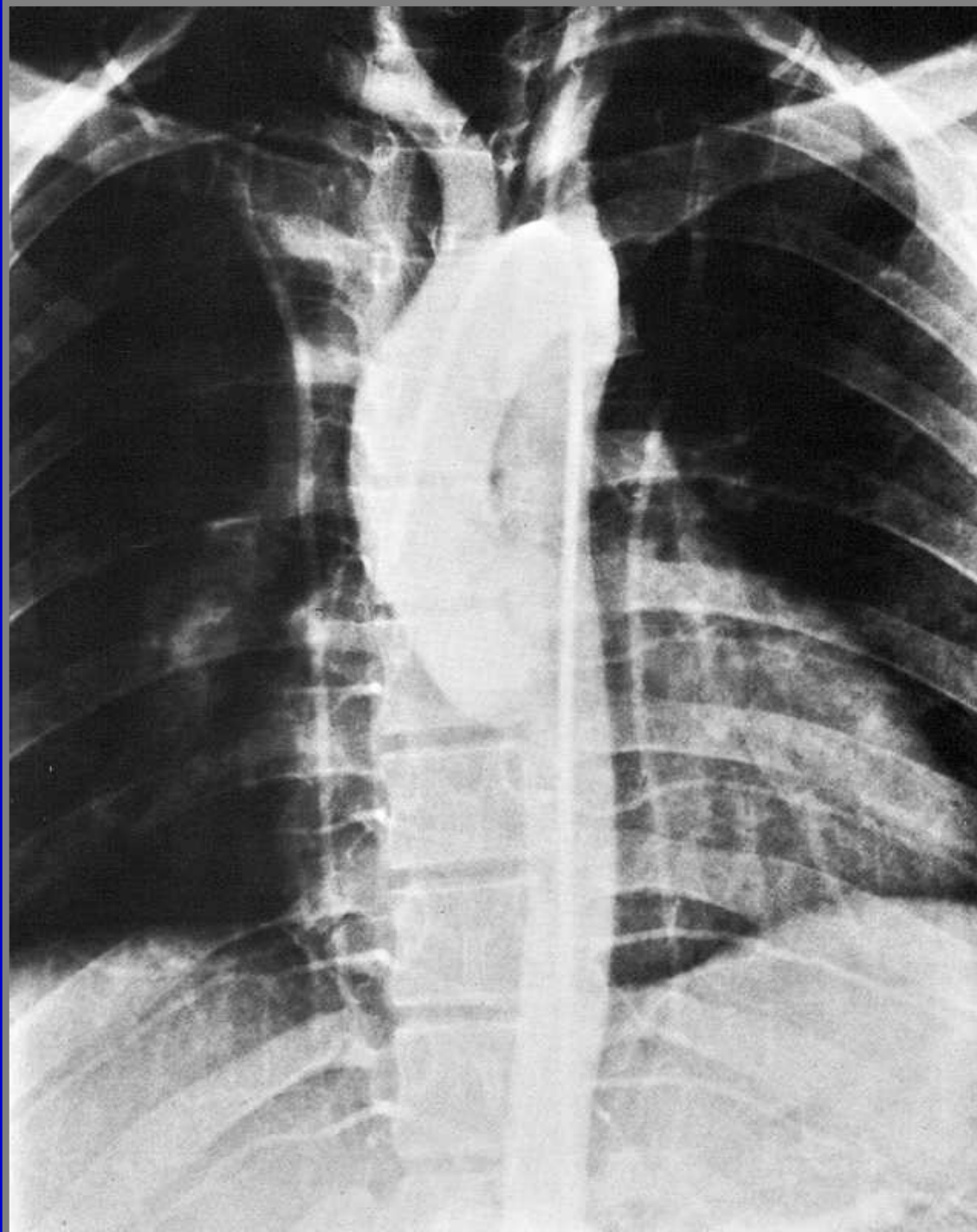
Koronarografie a. coronaria cordis sin.



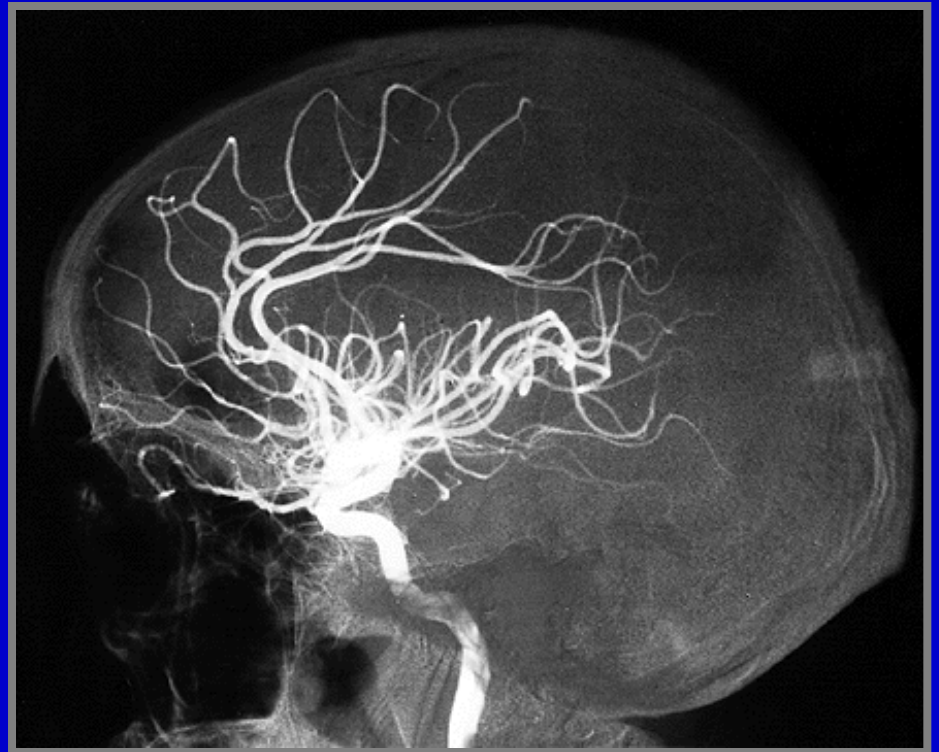
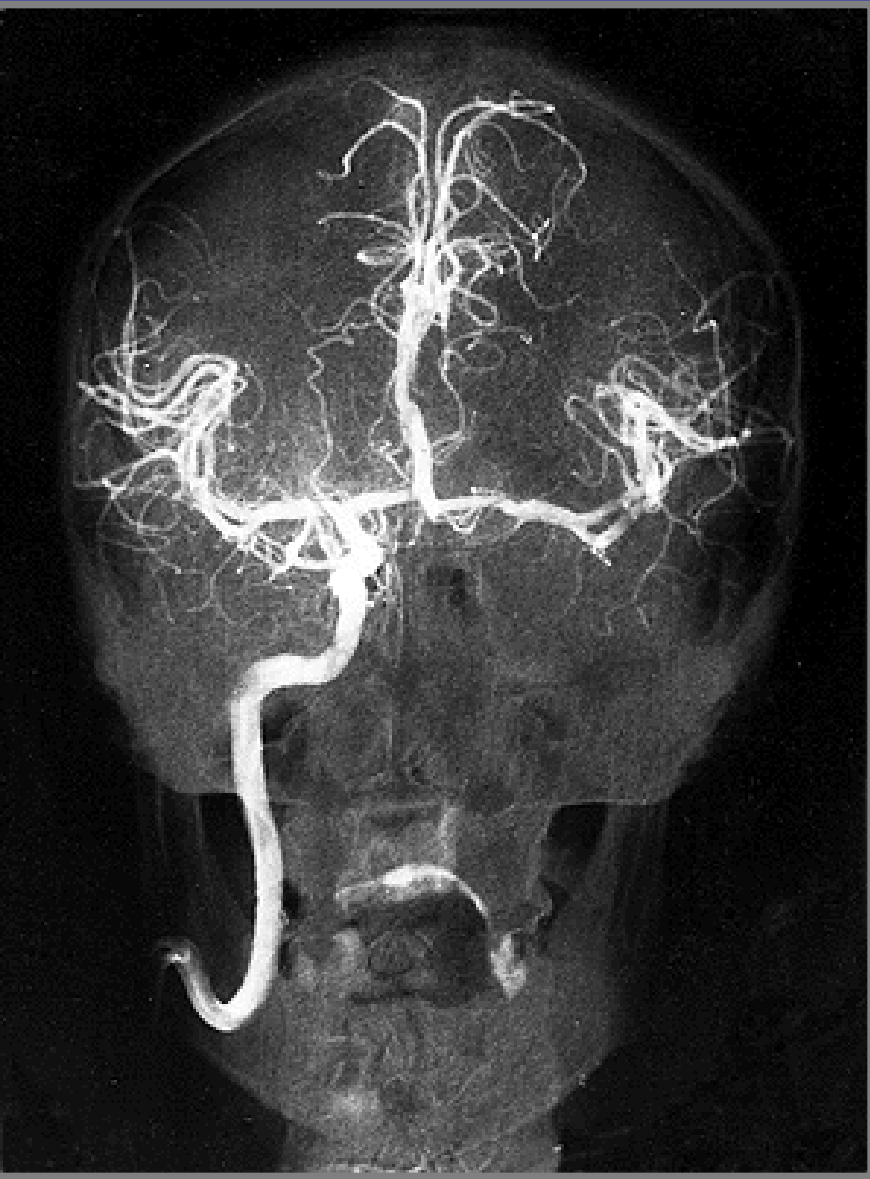
Koronarografie a. coronaria cordis dx.



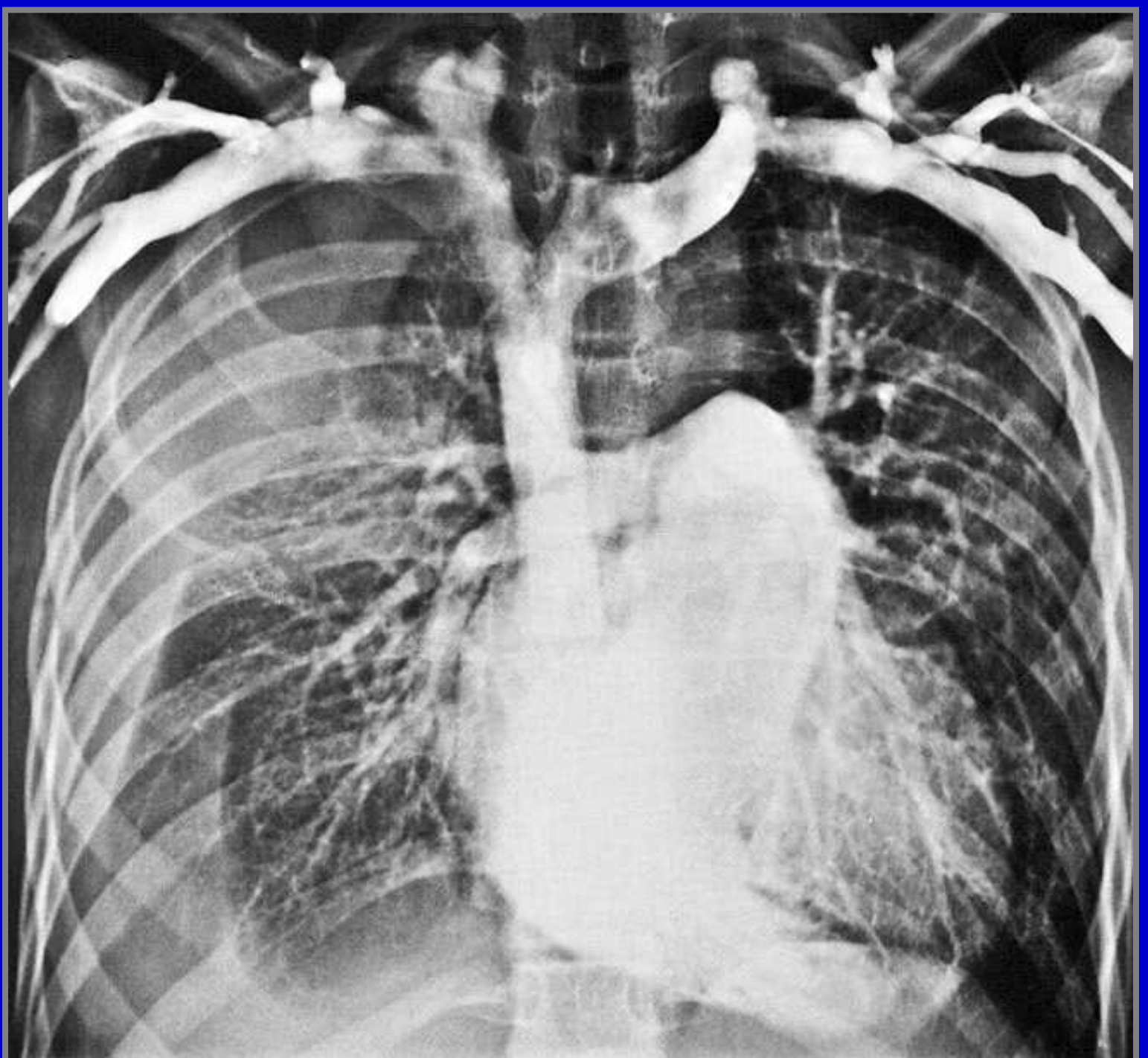
arcus aortae

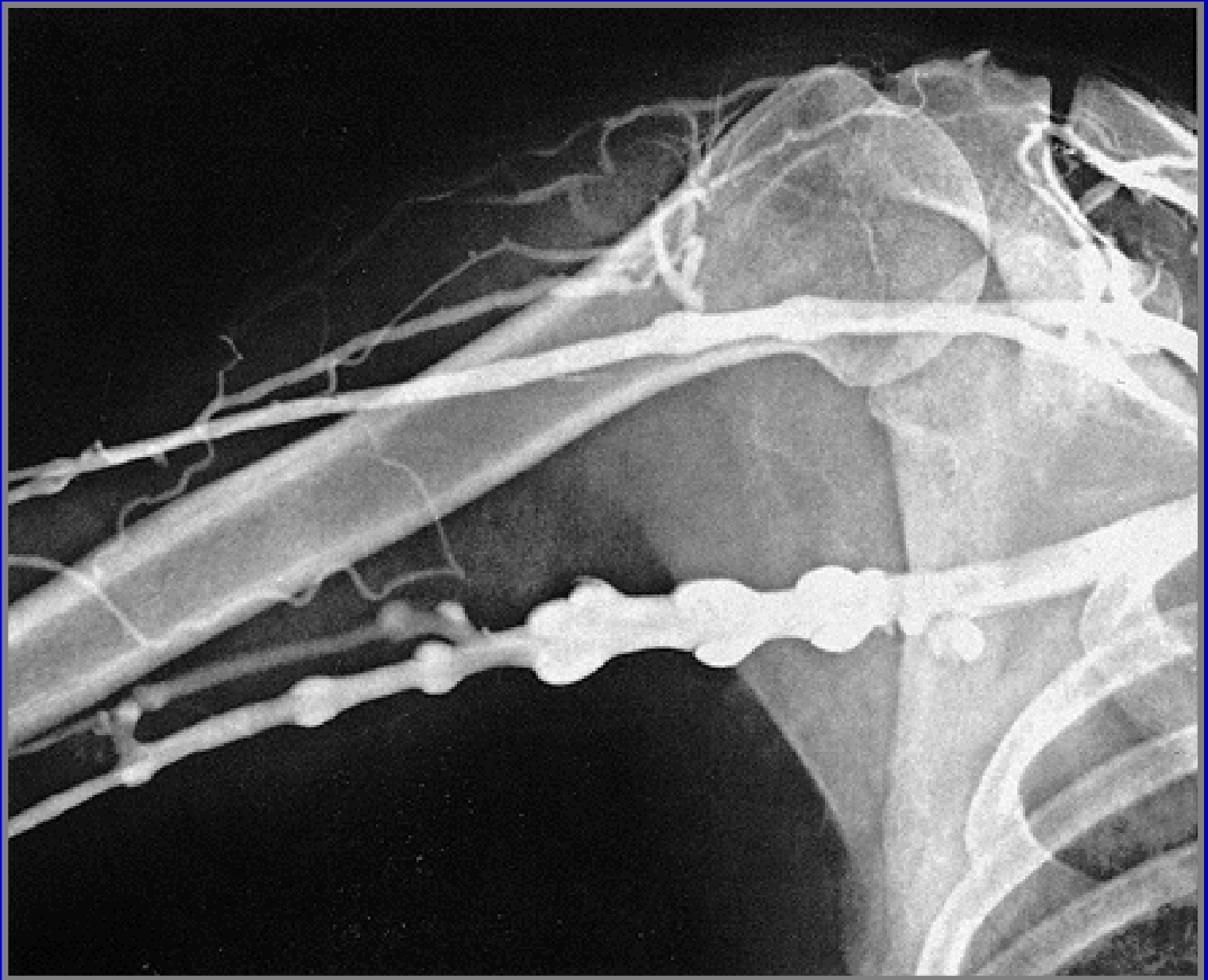


A. carotis interna - angiogram

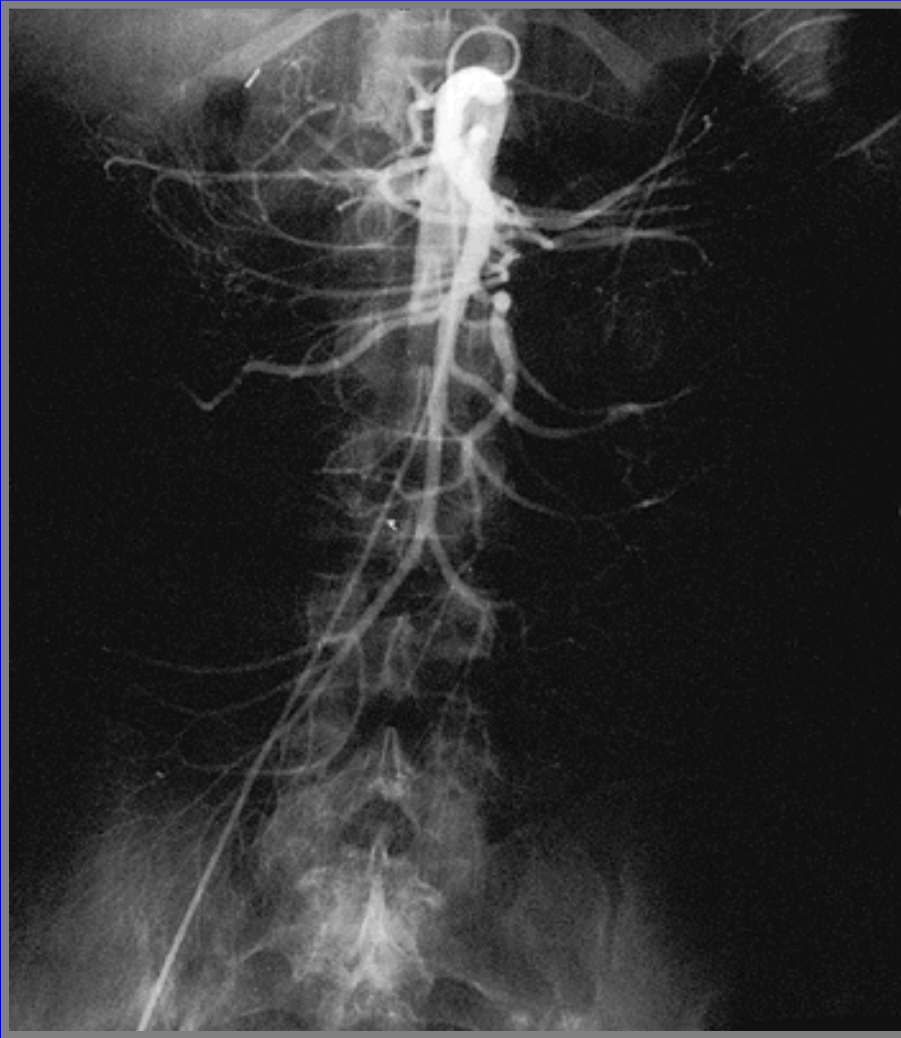


V. cava sup.





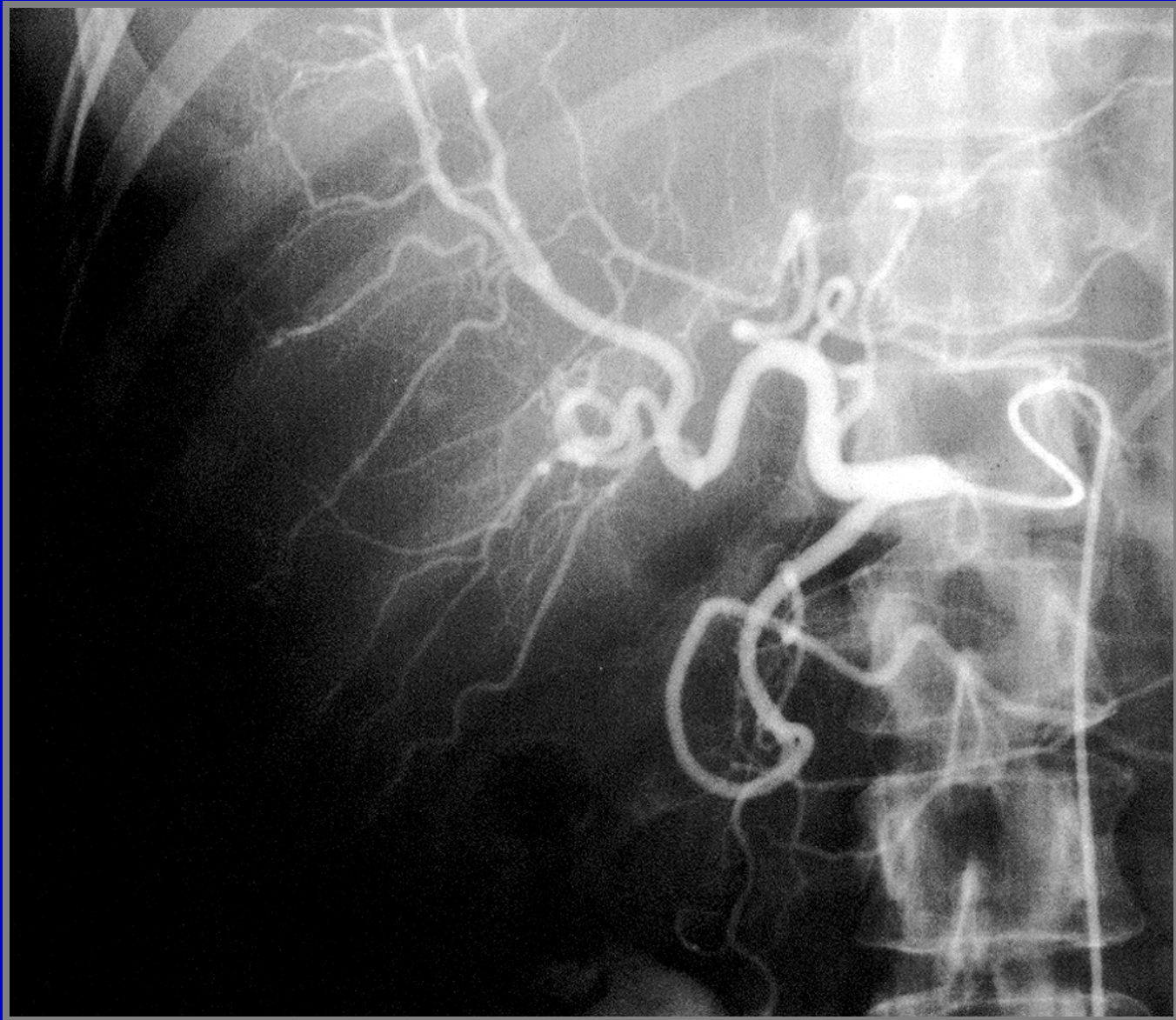
flebografie



A. mesenterica superior

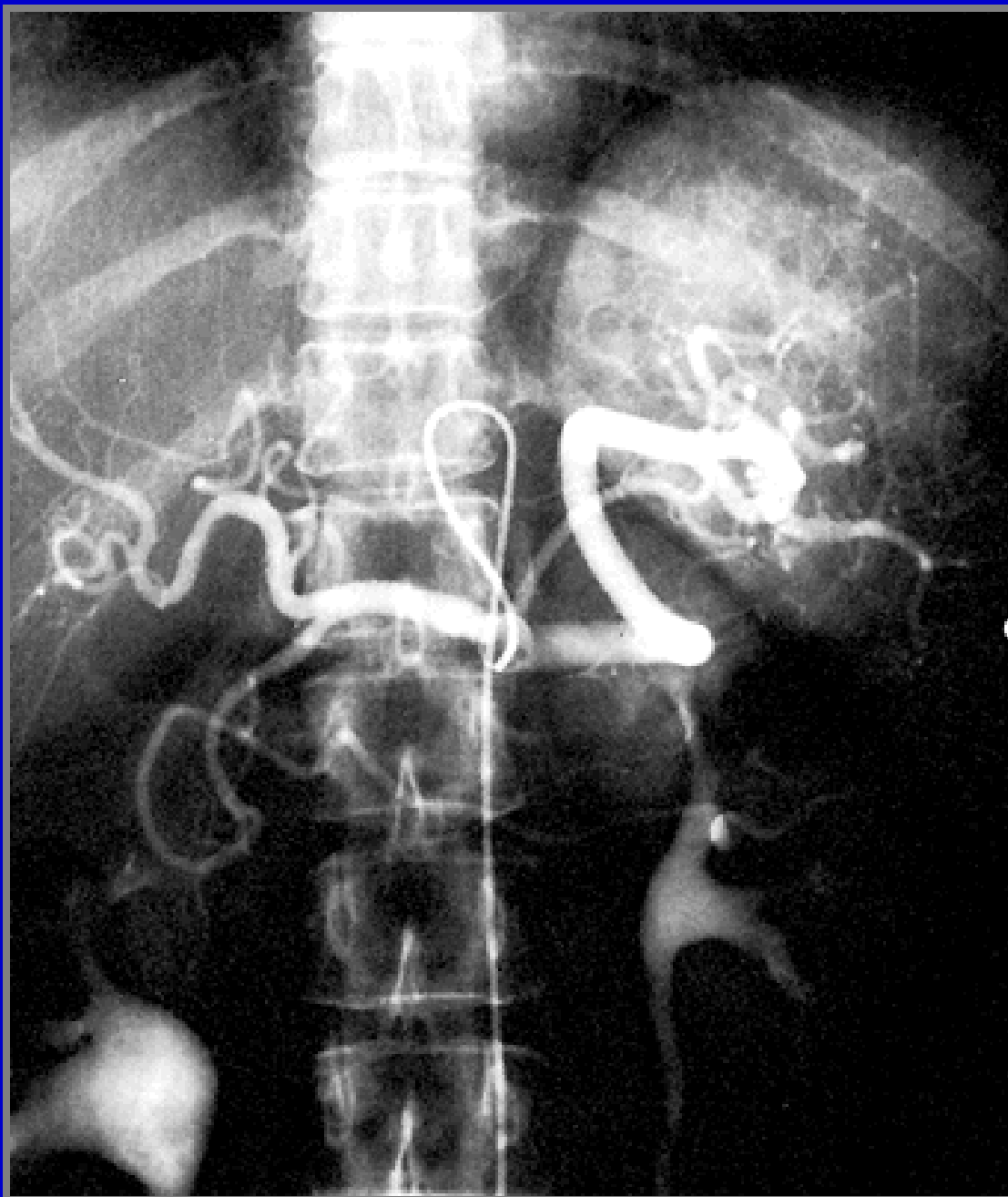


A. mesenterica inferior

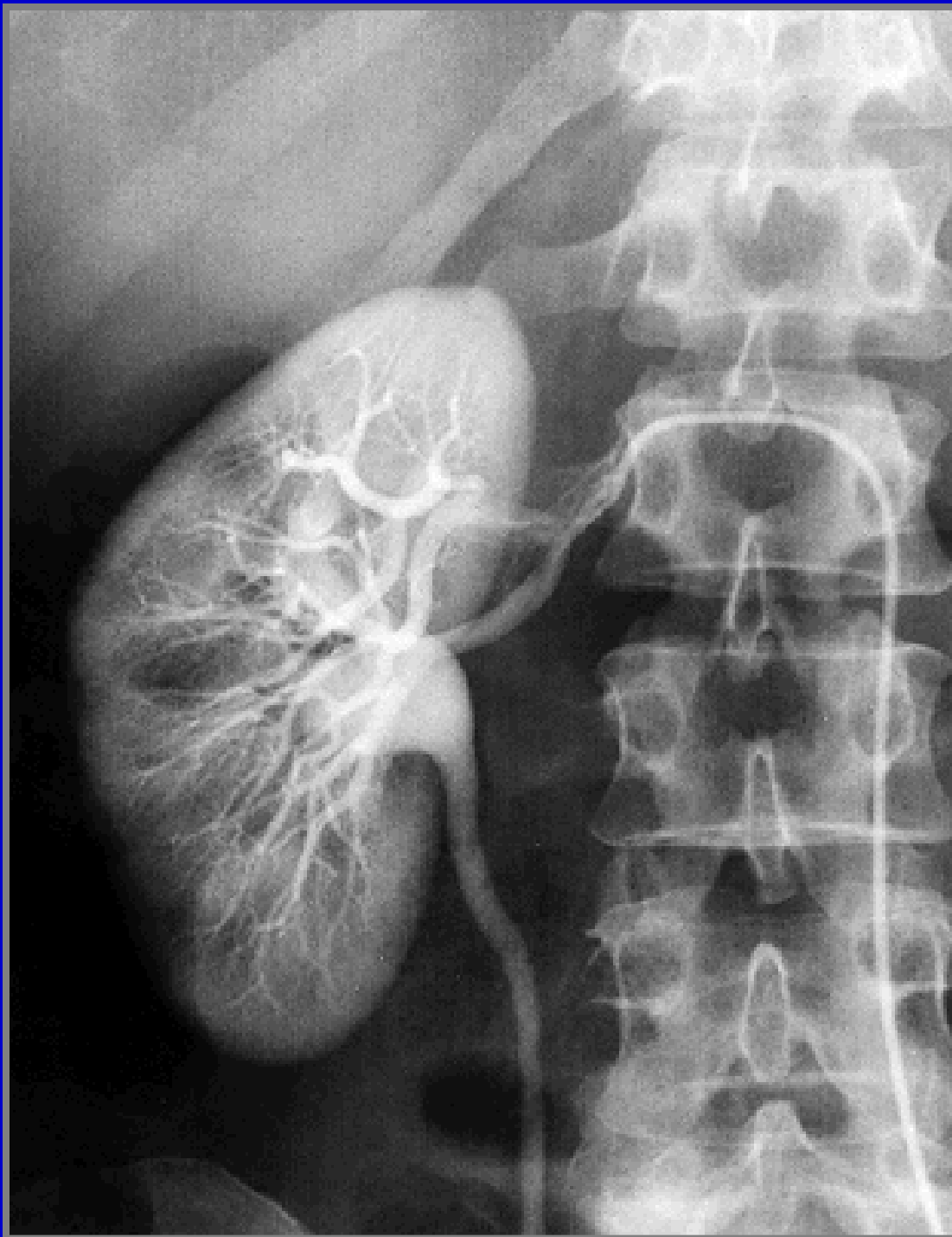


Common hepatic artery

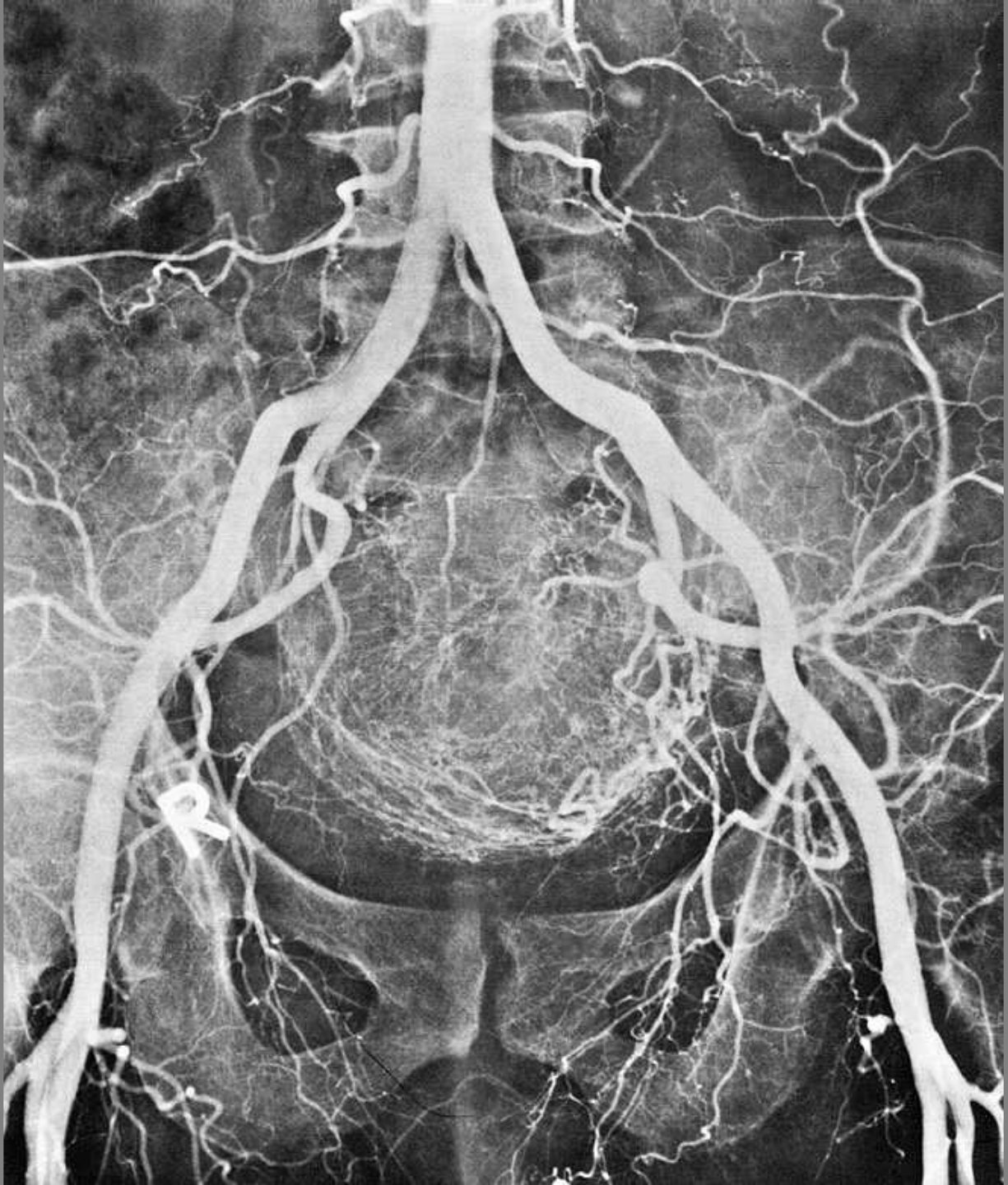
Truncus coeliacus



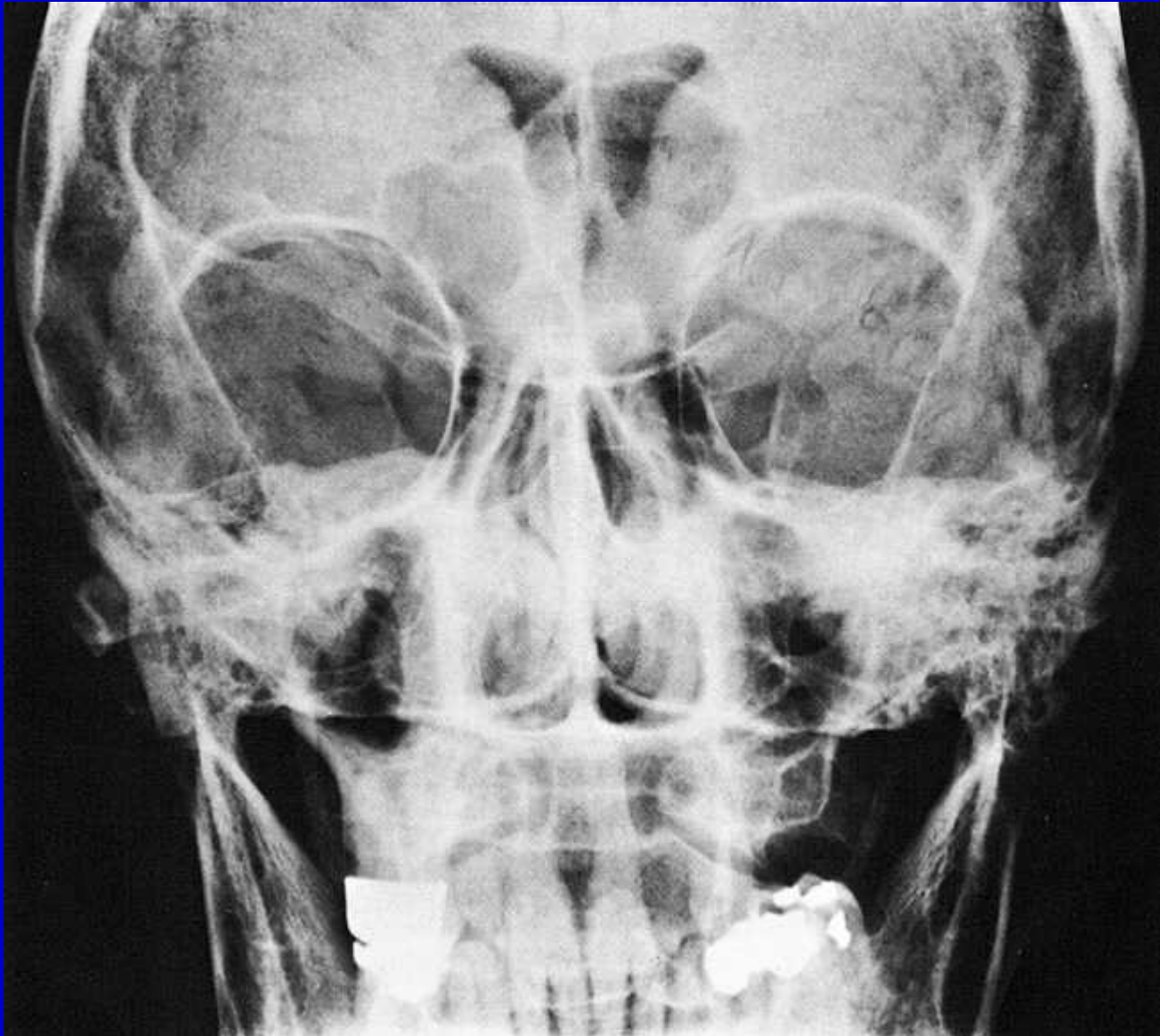
A. renalis



Aa. iliaca



Ventriculografie – sagitální projekce



Ventriculografie – boční projekce

