

Pharyngeal opening of pharyngotympanic (auditory) tube

Torus tubarius

Sphenoidal sinus

Soft palate

Pharyngeal tonsil

Palatine glands

Pharyngeal tubercle (basilar part of occipital bone)

Hard palate

Pharyngeal raphé

Semilunar fold

Pharyngeal recess

Supratonsillar fossa

Salpingopharyngeal fold

Palatoglossal arch

Uvula

Dropharynx

Triangular fold

Palatopharyngeal arch

Palatine tonsil

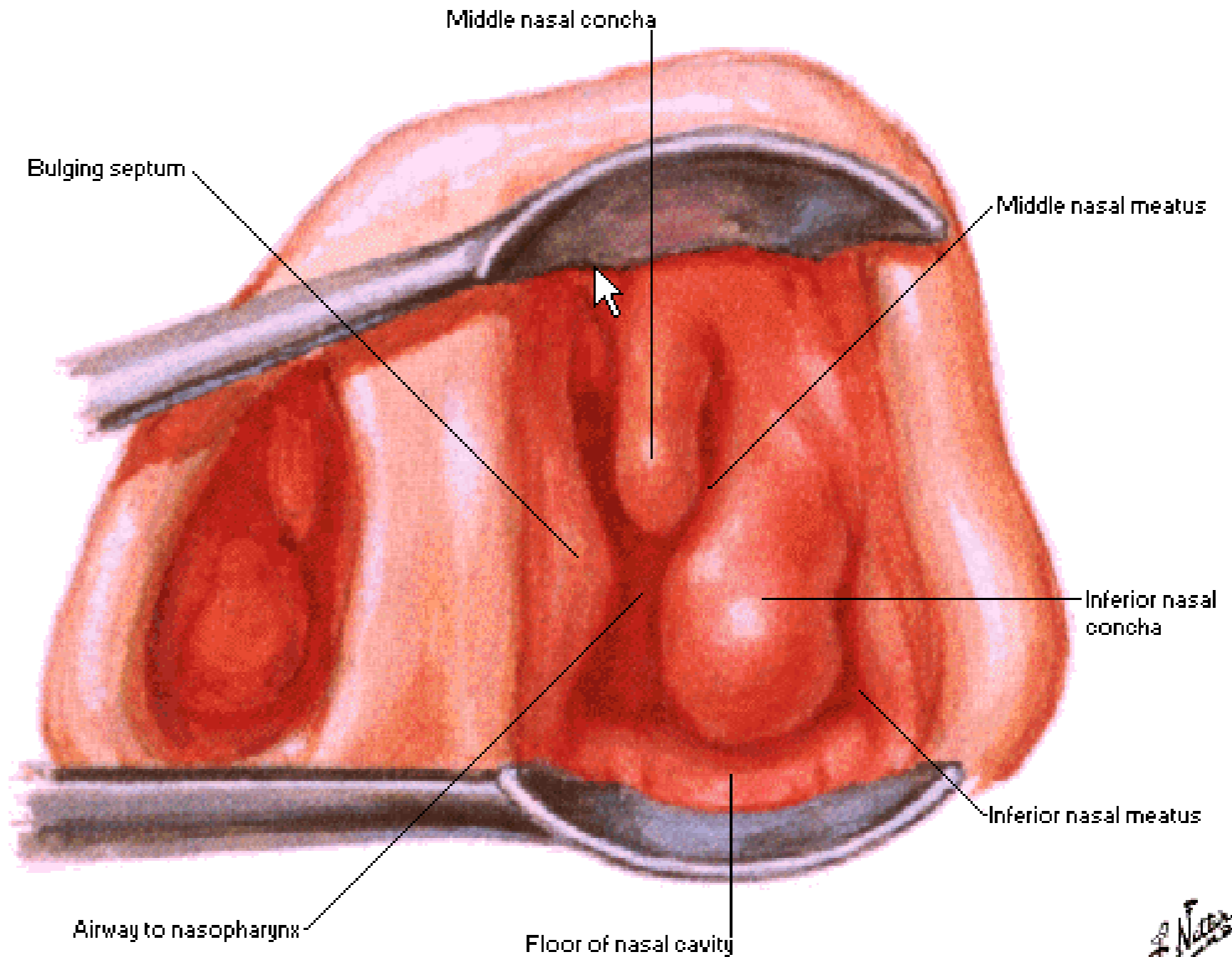
Tongue (drawn forward and downward)

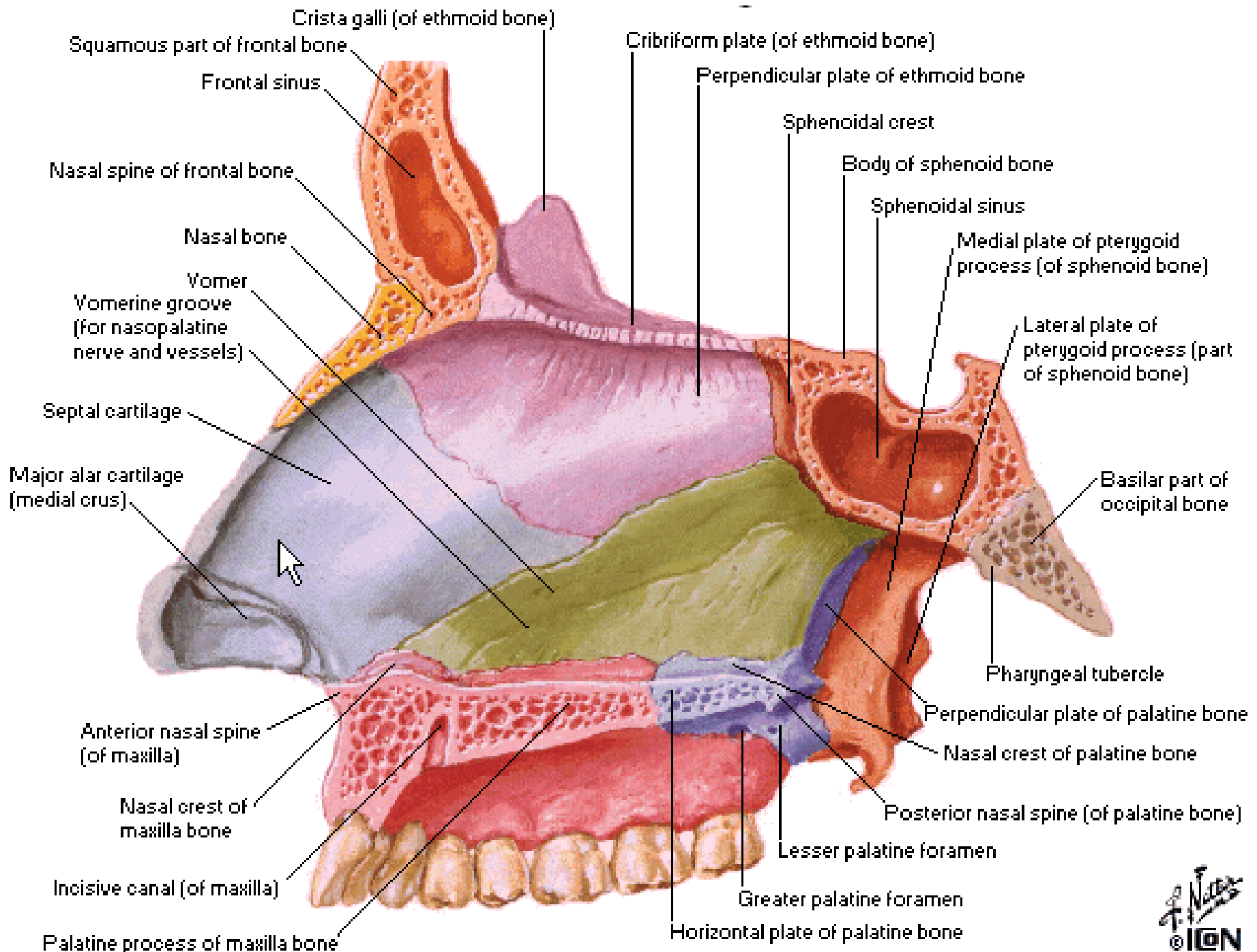
Epiglottis

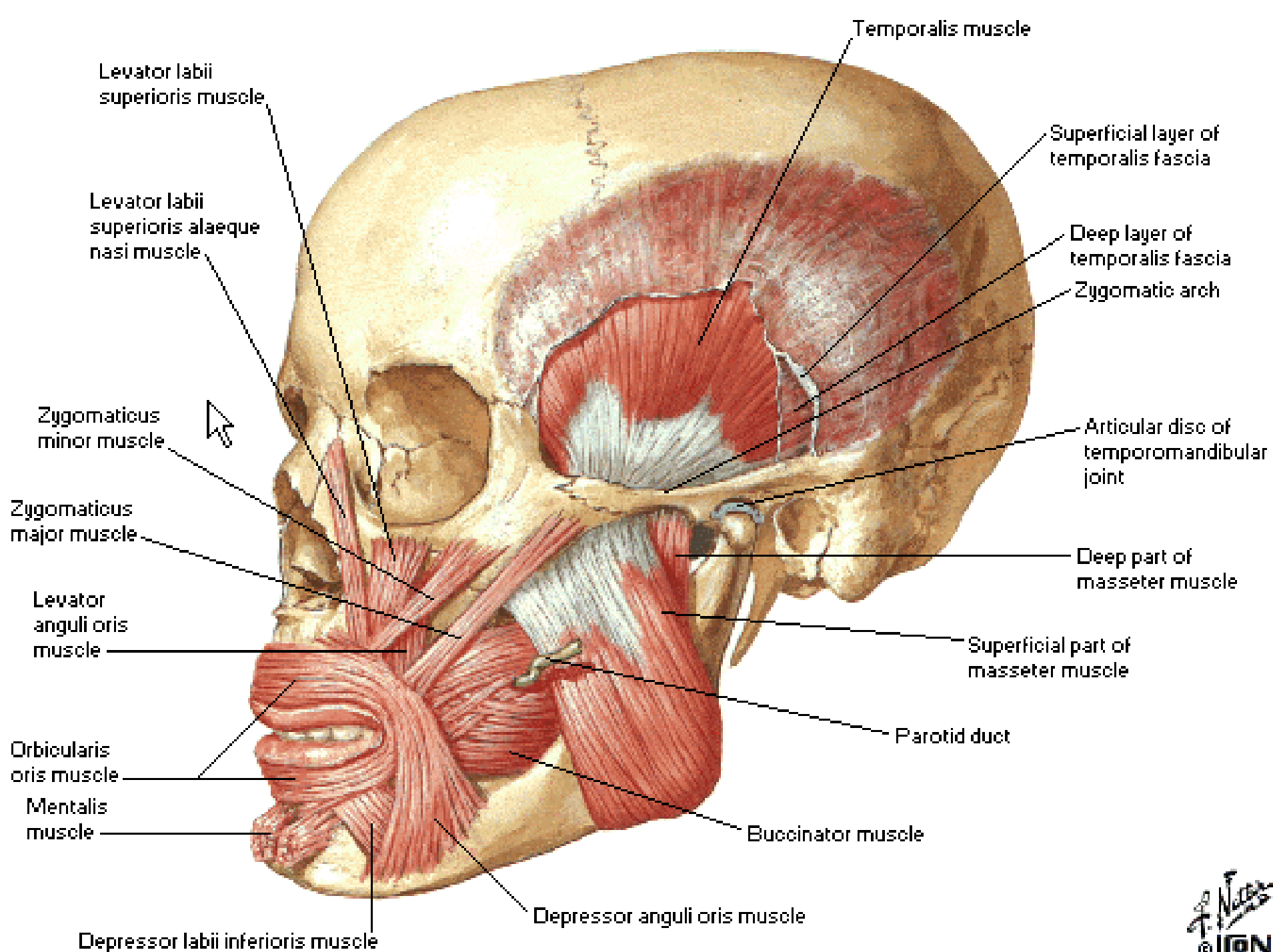
Lingual tonsil

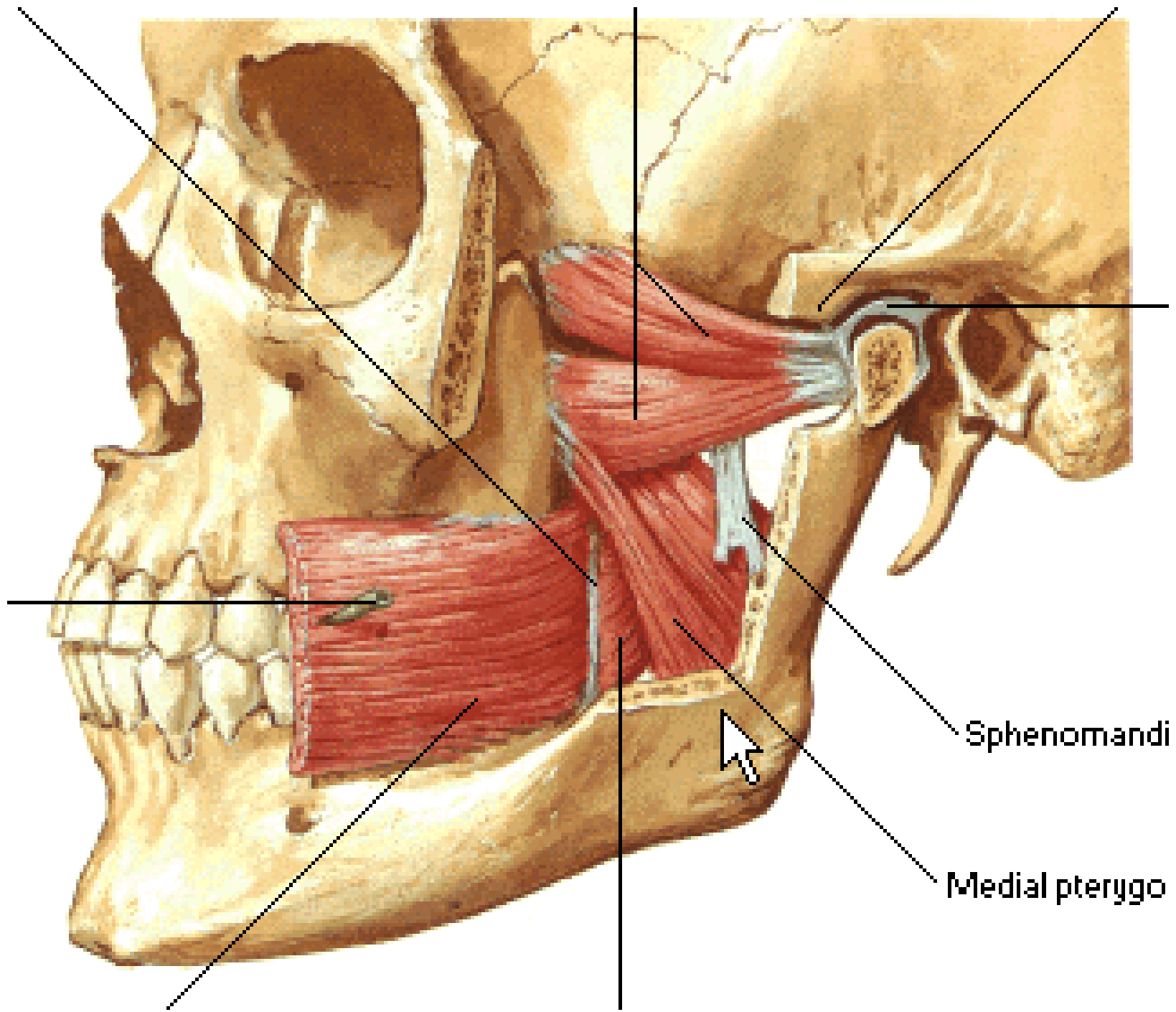
Wallecula

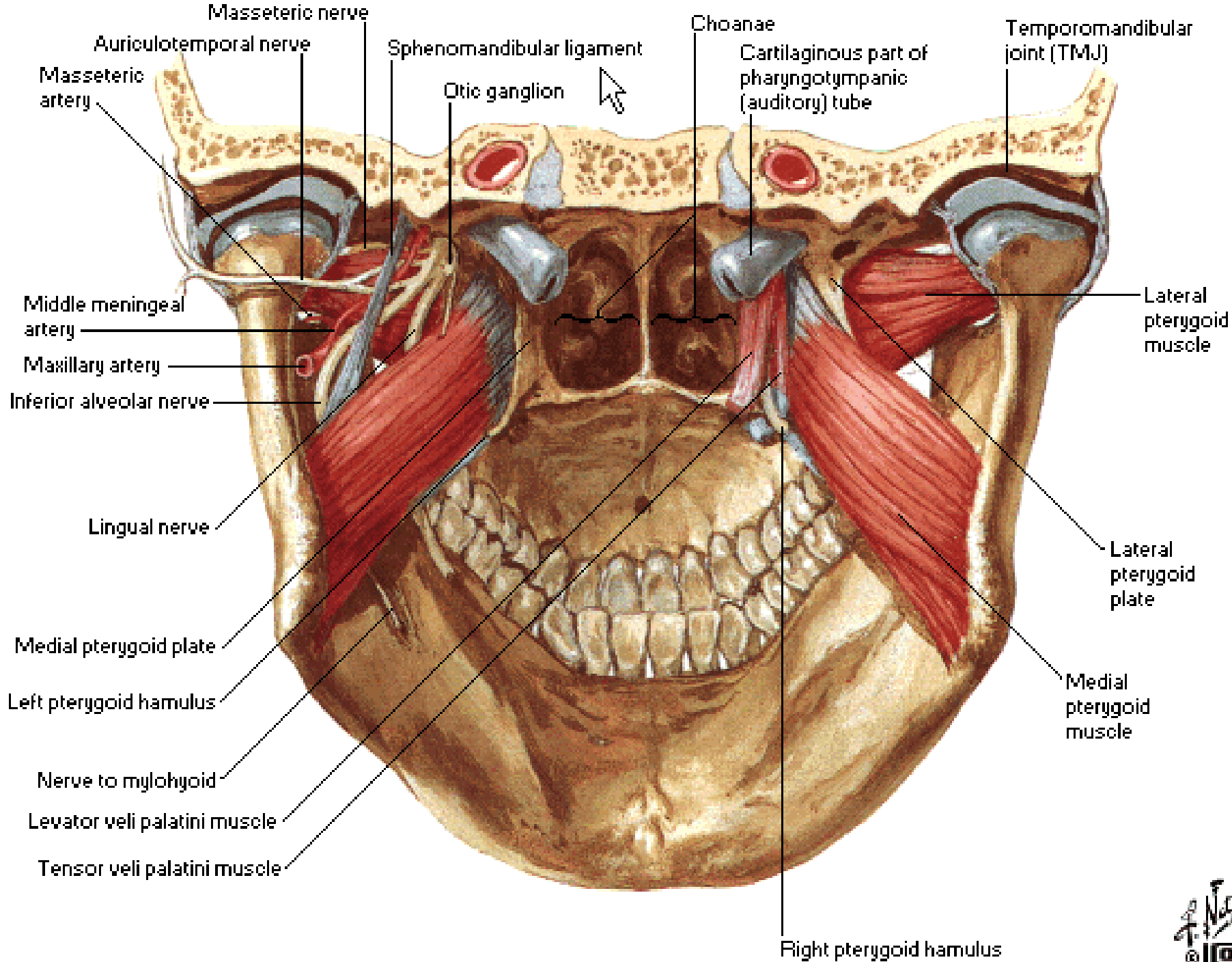
Medial [Sagittal] Section

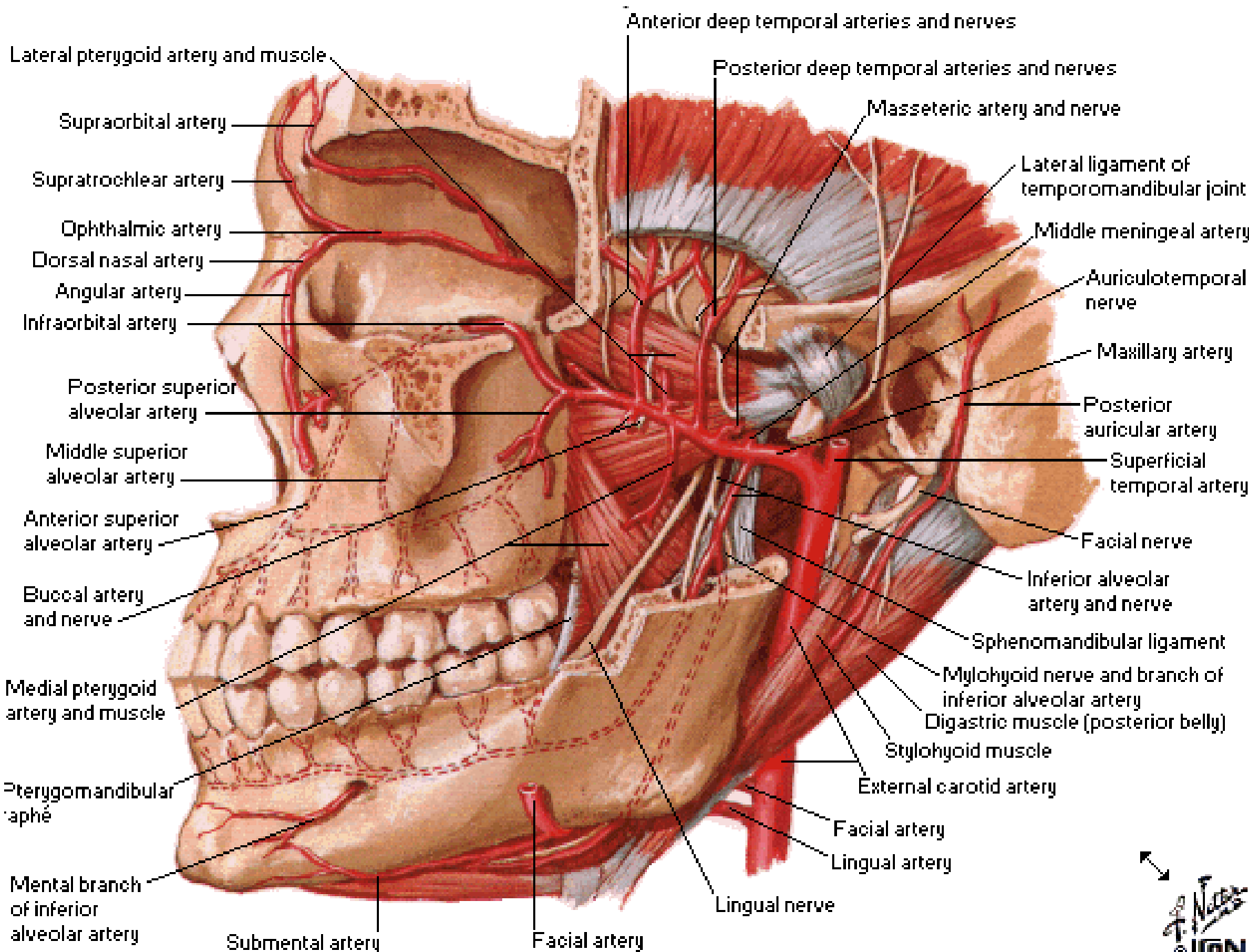


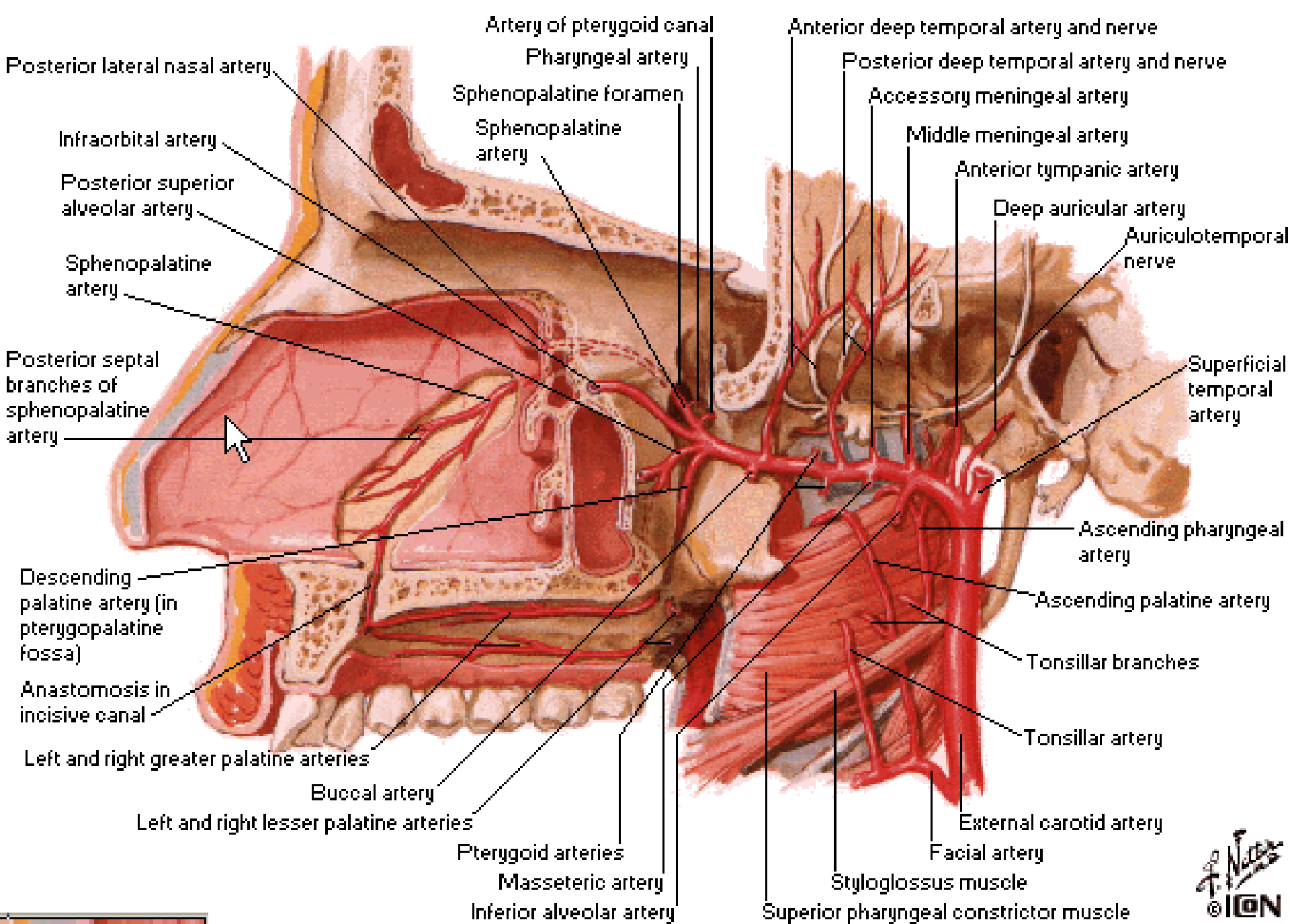


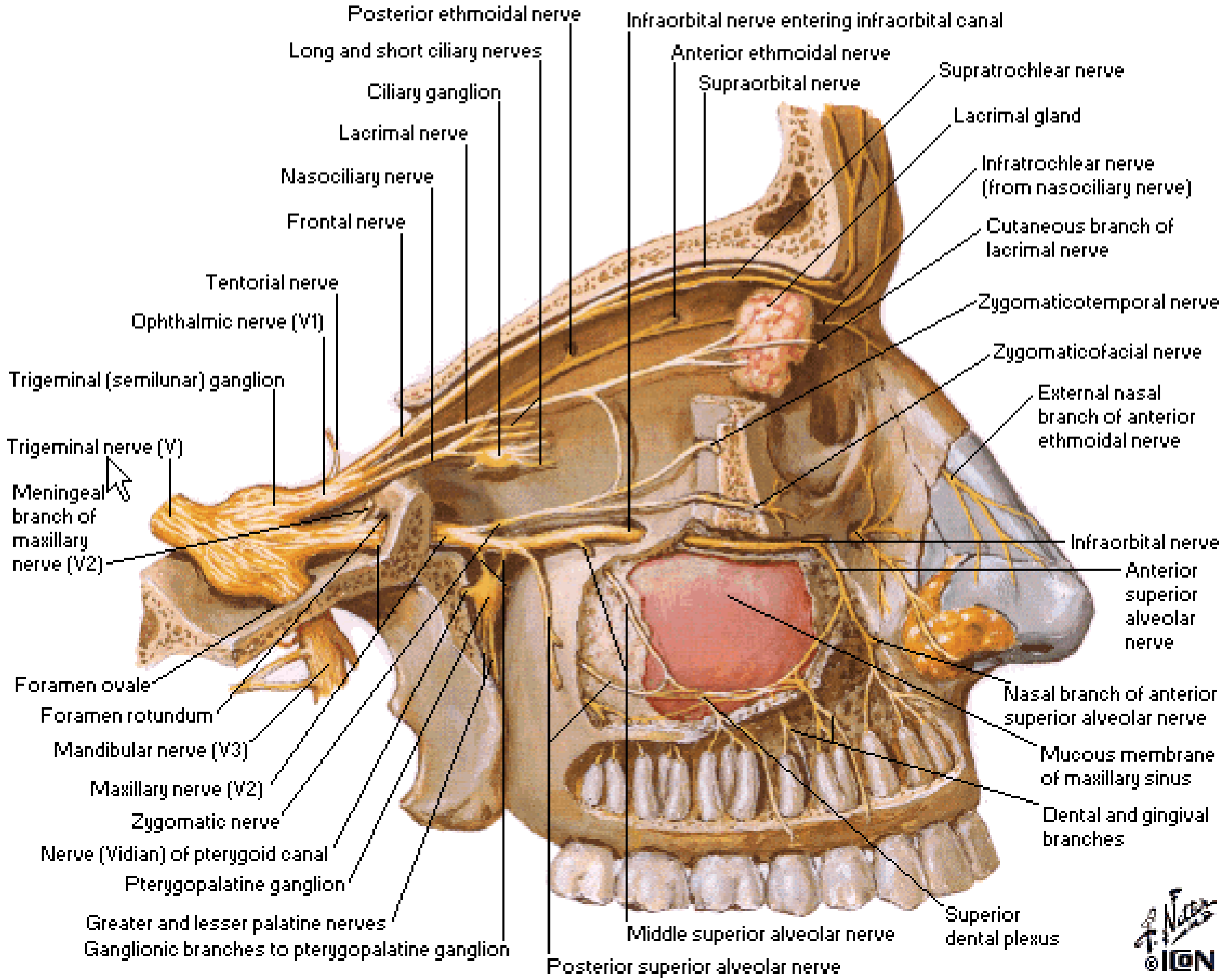




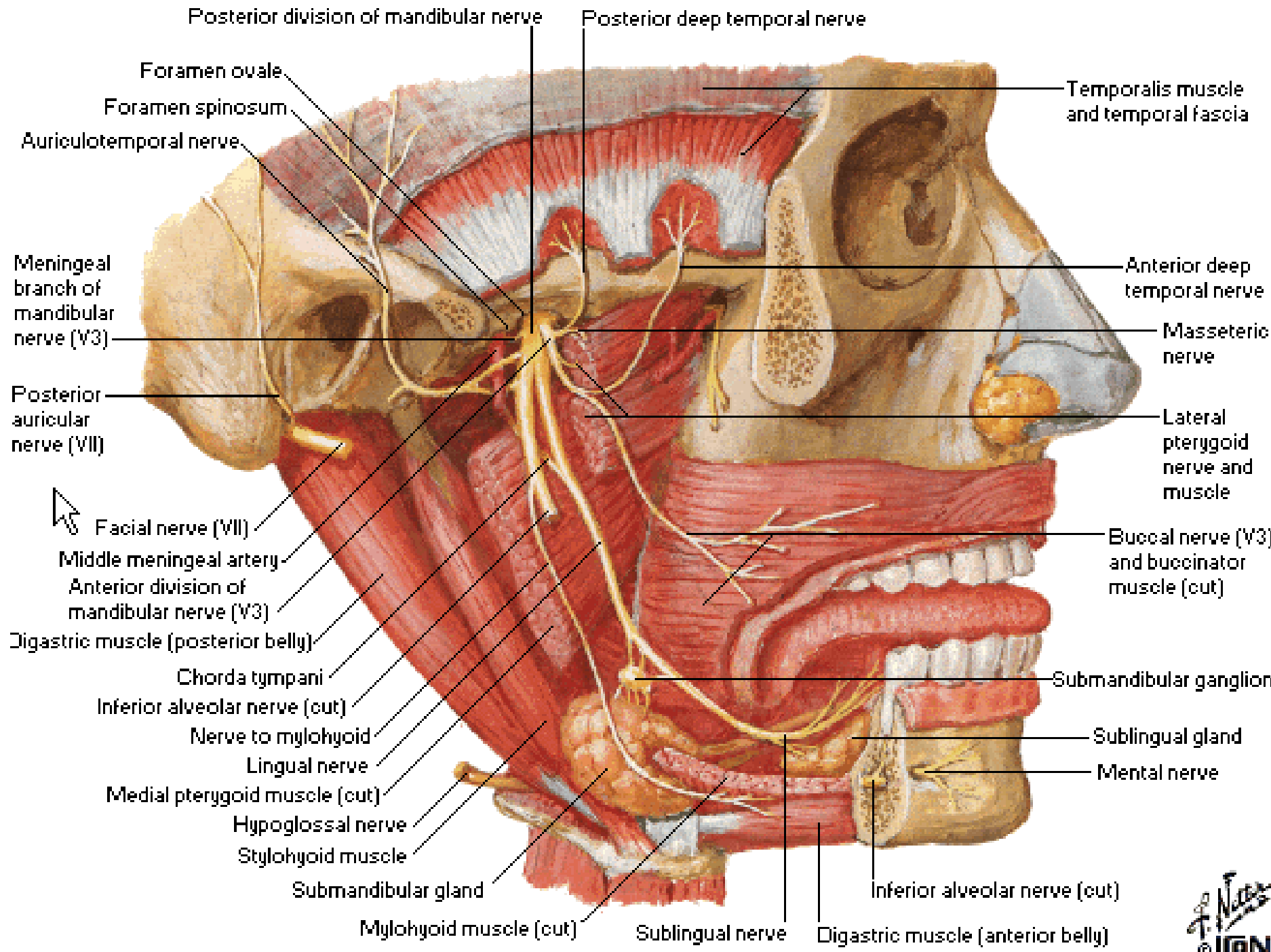








Posterior ethmoidal nerve
 Long and short ciliary nerves
 Ciliary ganglion
 Lacrimal nerve
 Nasociliary nerve
 Frontal nerve
 Tentorial nerve
 Ophthalmic nerve (V1)
 Trigeminal (semilunar) ganglion
 Trigeminal nerve (V)
 Meningeal branch of maxillary nerve (V2)
 Foramen ovale
 Foramen rotundum
 Mandibular nerve (V3)
 Maxillary nerve (V2)
 Zygomatic nerve
 Nerve (Vidian) of pterygoid canal
 Pterygopalatine ganglion
 Greater and lesser palatine nerves
 Ganglionic branches to pterygopalatine ganglion
 Infraorbital nerve entering infraorbital canal
 Anterior ethmoidal nerve
 Supraorbital nerve
 Supratrochlear nerve
 Lacrimal gland
 Infratrochlear nerve (from nasociliary nerve)
 Cutaneous branch of lacrimal nerve
 Zygomaticotemporal nerve
 Zygomaticofacial nerve
 External nasal branch of anterior ethmoidal nerve
 Infraorbital nerve
 Anterior superior alveolar nerve
 Nasal branch of anterior superior alveolar nerve
 Mucous membrane of maxillary sinus
 Dental and gingival branches
 Superior dental plexus
 Middle superior alveolar nerve
 Posterior superior alveolar nerve



Posterior division of mandibular nerve

Posterior deep temporal nerve

Temporalis muscle and temporal fascia

Foramen ovale

Foramen spinosum

Auriculotemporal nerve

Anterior deep temporal nerve

Meningeal branch of mandibular nerve (V3)

Masseteric nerve

Posterior auricular nerve (VII)

Lateral pterygoid nerve and muscle

Facial nerve (VII)

Buccal nerve (V3) and buccinator muscle (cut)

Middle meningeal artery

Anterior division of mandibular nerve (V3)

Digastric muscle (posterior belly)

Submandibular ganglion

Chorda tympani

Inferior alveolar nerve (cut)

Sublingual gland

Nerve to mylohyoid

Lingual nerve

Mental nerve

Medial pterygoid muscle (cut)

Hypoglossal nerve

Stylohyoid muscle

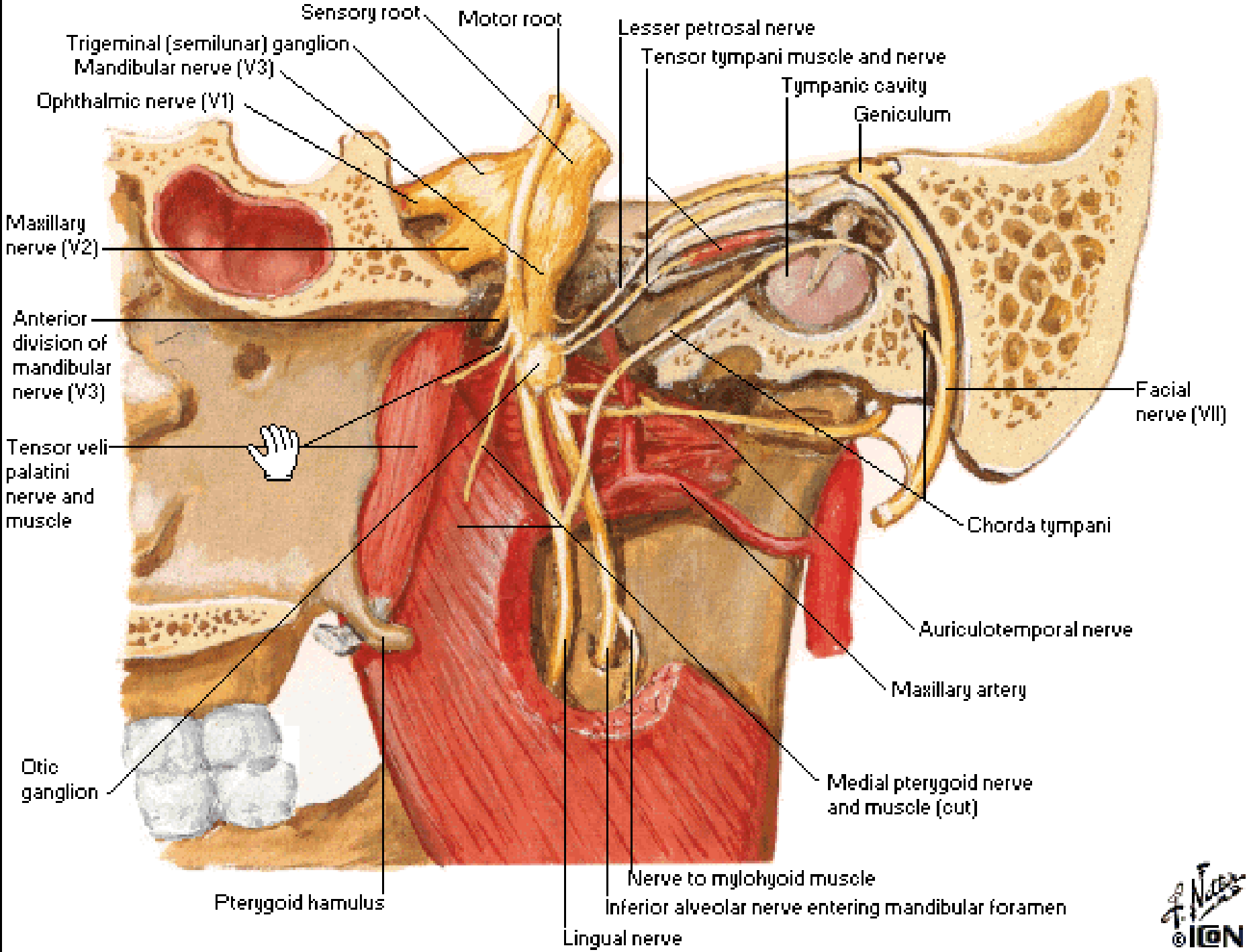
Submandibular gland

Inferior alveolar nerve (cut)

Mylohyoid muscle (cut)

Sublingual nerve

Digastric muscle (anterior belly)



Trigeminal (semilunar) ganglion
 Mandibular nerve (V3)
 Ophthalmic nerve (V1)

Maxillary nerve (V2)

Anterior
 division of
 mandibular
 nerve (V3)

Tensor veli
 palatini
 nerve and
 muscle

Otic ganglion

Pterygoid hamulus

Sensory root Motor root

Lesser petrosal nerve

Tensor tympani muscle and nerve

Tympanic cavity

Geniculum

Facial nerve (VII)

Chorda tympani

Auriculotemporal nerve

Maxillary artery

Medial pterygoid nerve and muscle (cut)

Nerve to mylohyoid muscle

Inferior alveolar nerve entering mandibular foramen

Lingual nerve

