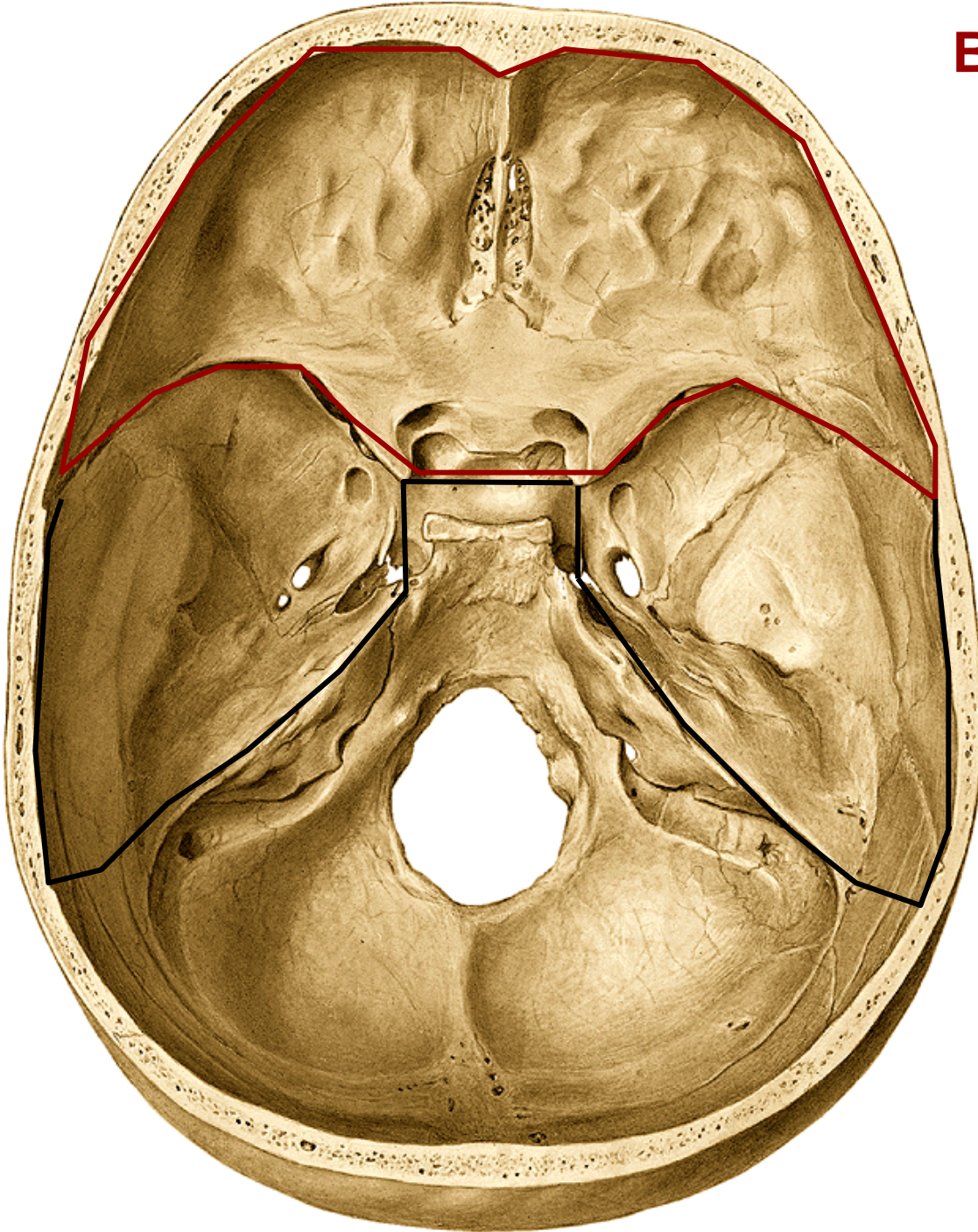


Basis cranii interna

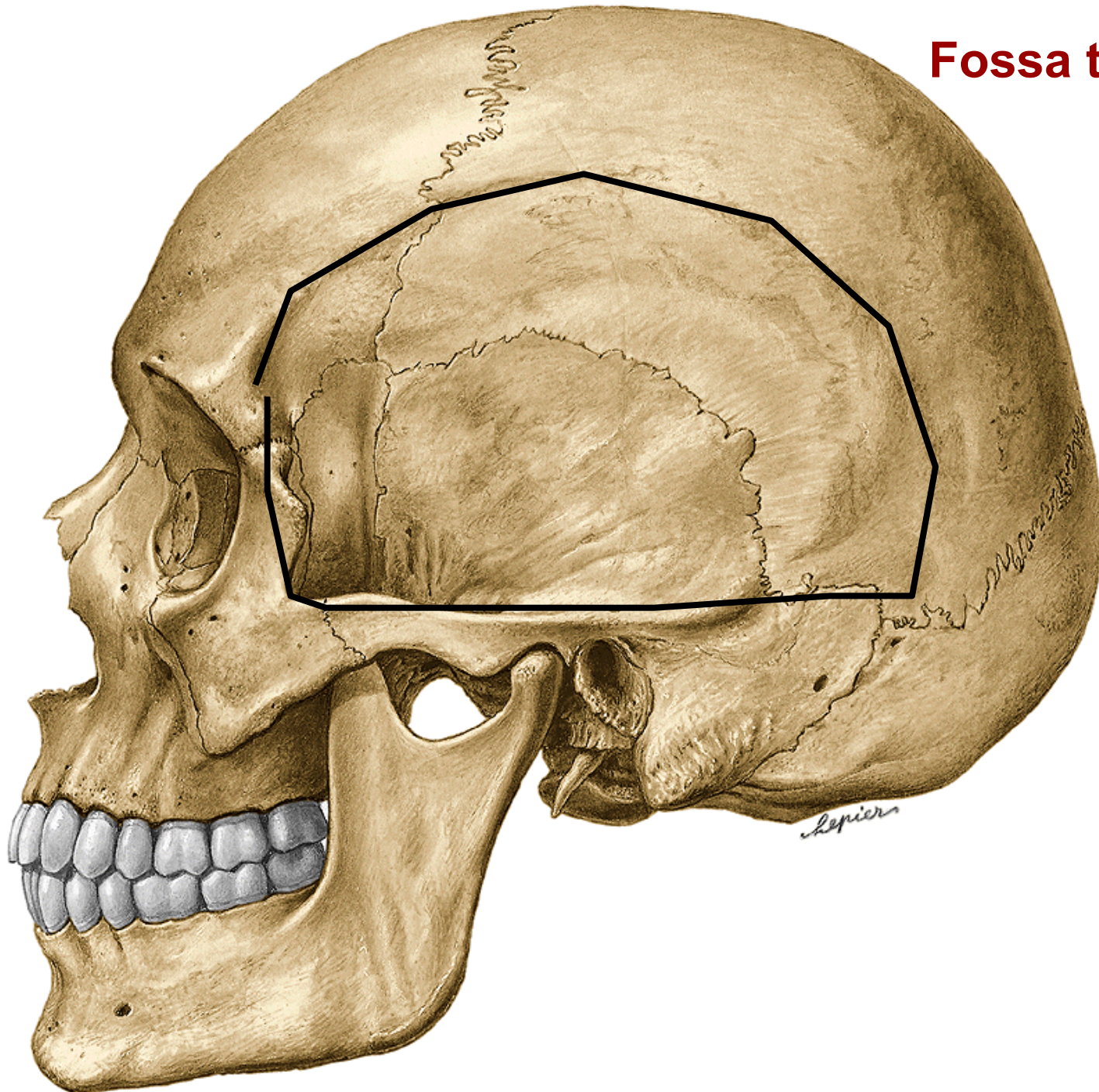
Fossa cerebri ant.

Fossa cerebri med.

Fossa cerebri post.

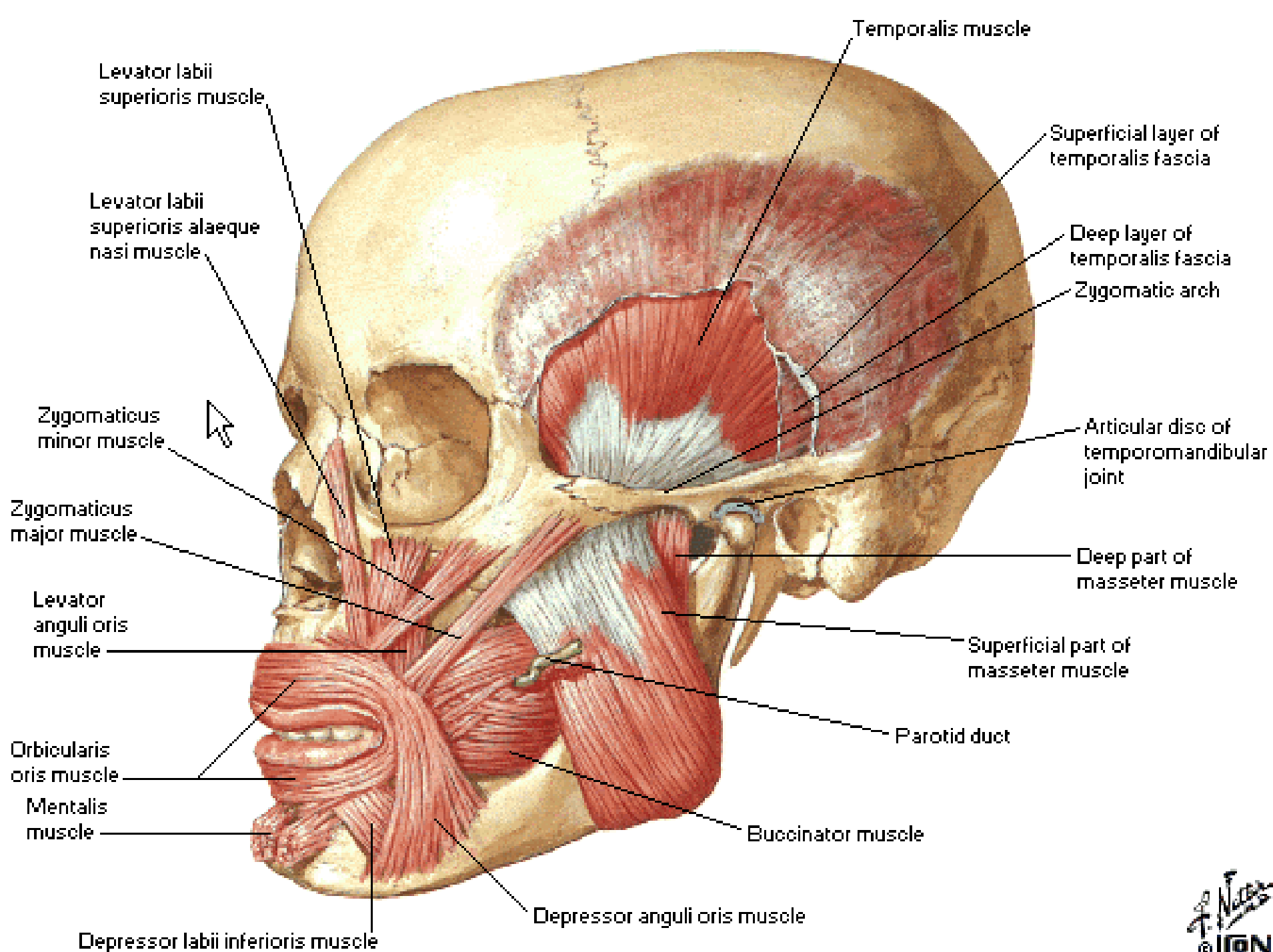


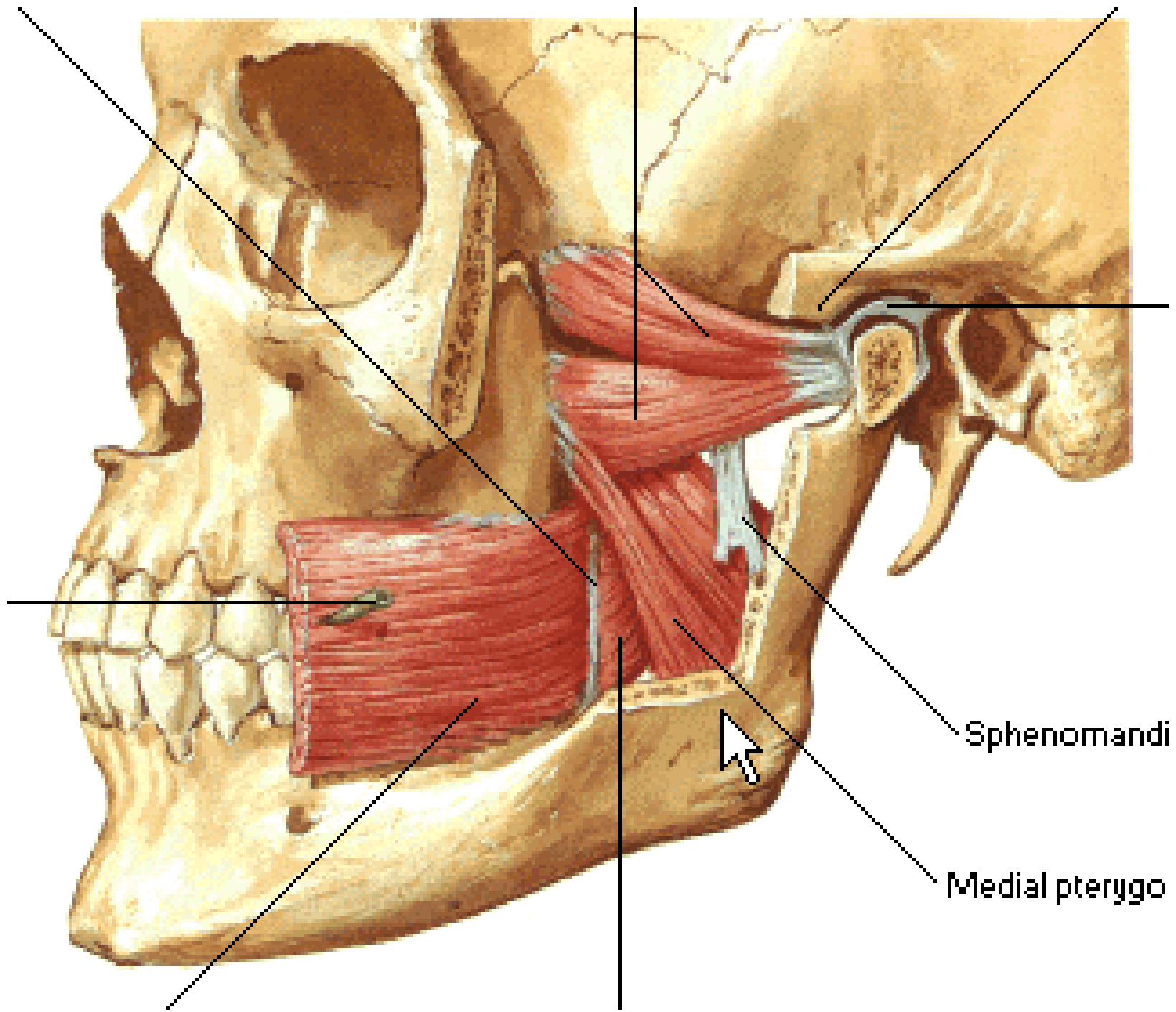
Fossa temporalis

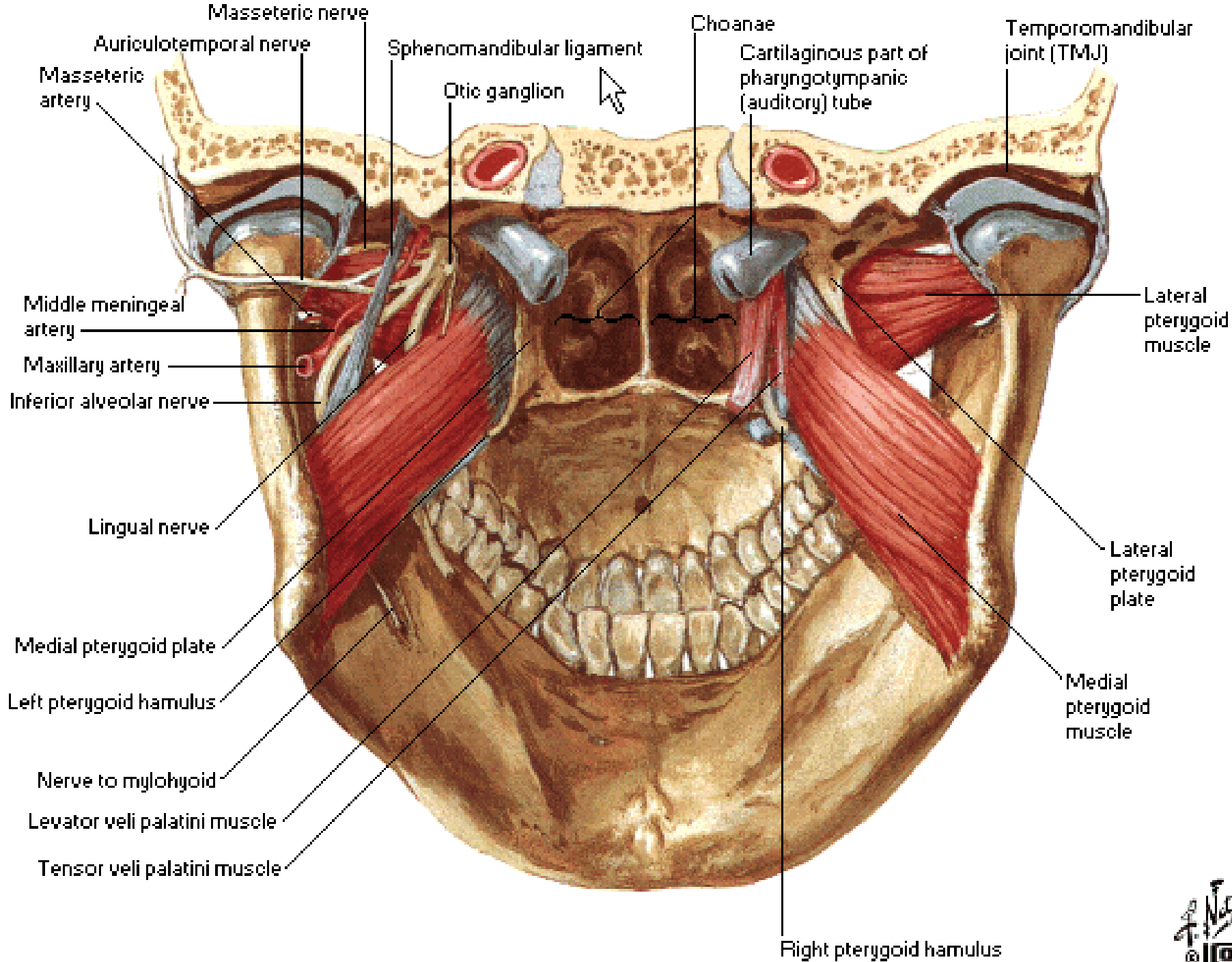


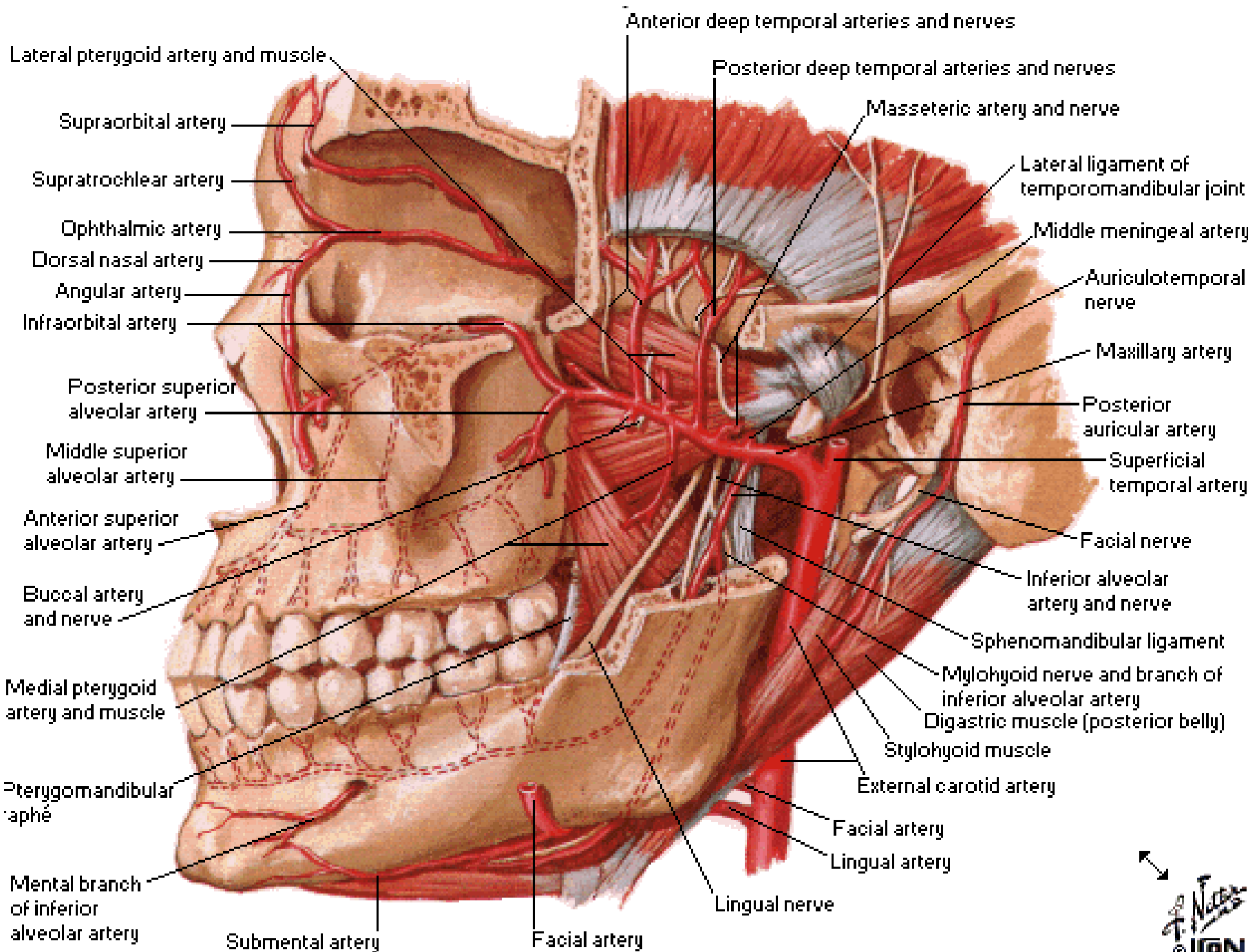
Fossa infratemporalis

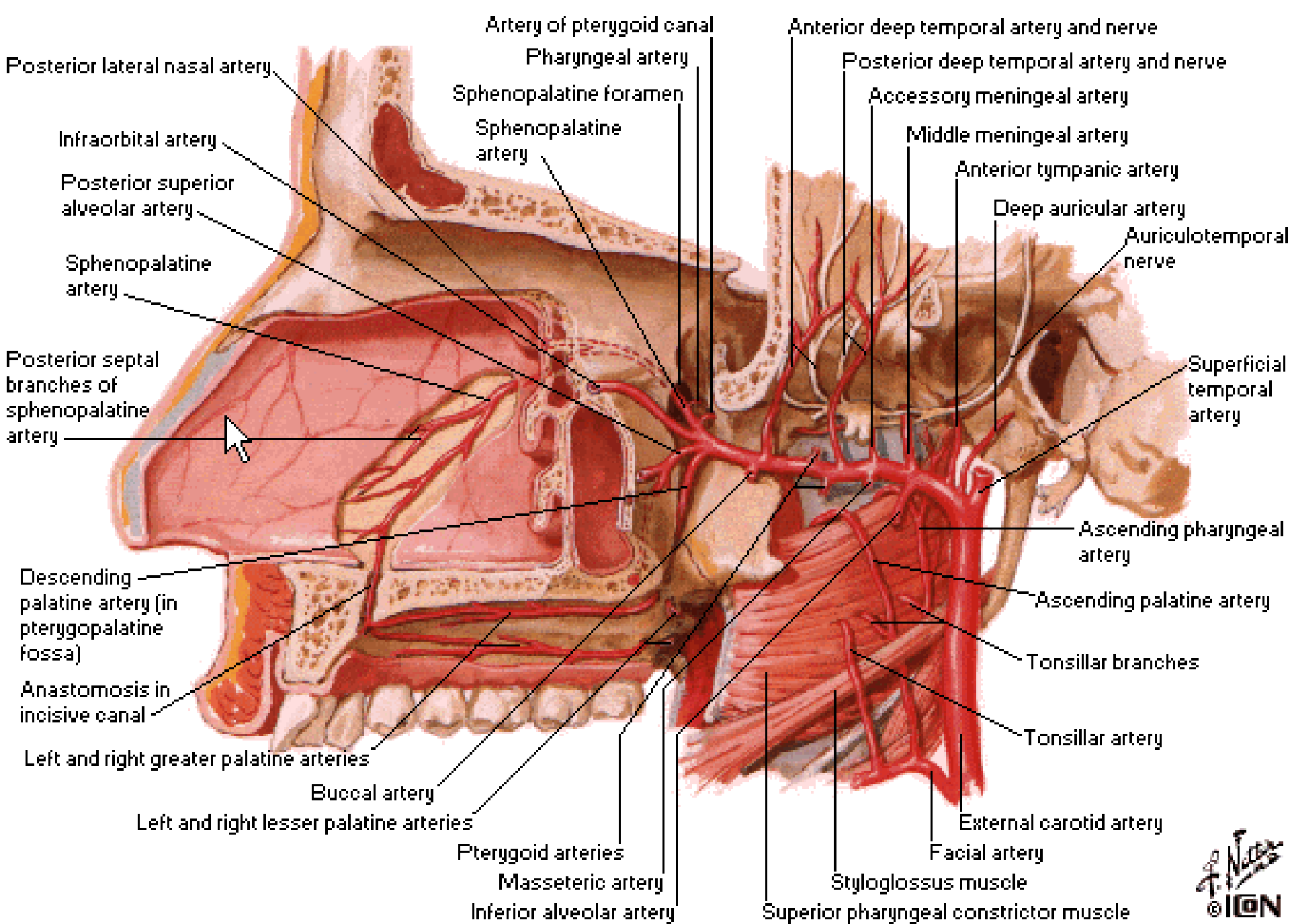


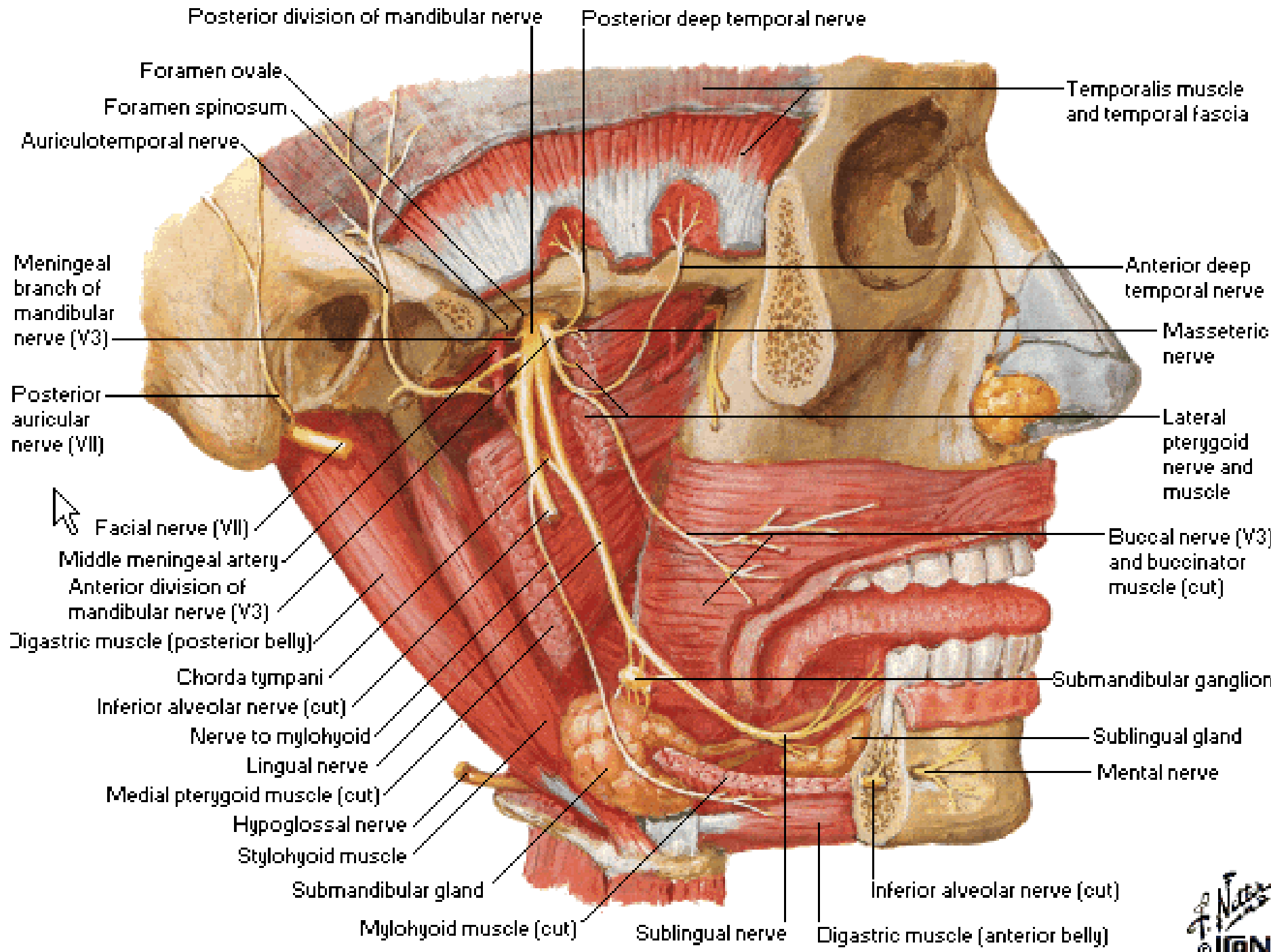












Posterior division of mandibular nerve

Posterior deep temporal nerve

Temporalis muscle and temporal fascia

Foramen ovale

Foramen spinosum

Auriculotemporal nerve

Anterior deep temporal nerve

Meningeal branch of mandibular nerve (V3)

Masseteric nerve

Posterior auricular nerve (VII)

Lateral pterygoid nerve and muscle

Facial nerve (VII)

Buccal nerve (V3) and buccinator muscle (cut)

Middle meningeal artery

Anterior division of mandibular nerve (V3)

Digastric muscle (posterior belly)

Submandibular ganglion

Chorda tympani

Inferior alveolar nerve (cut)

Sublingual gland

Nerve to mylohyoid

Lingual nerve

Mental nerve

Medial pterygoid muscle (cut)

Hypoglossal nerve

Stylohyoid muscle

Submandibular gland

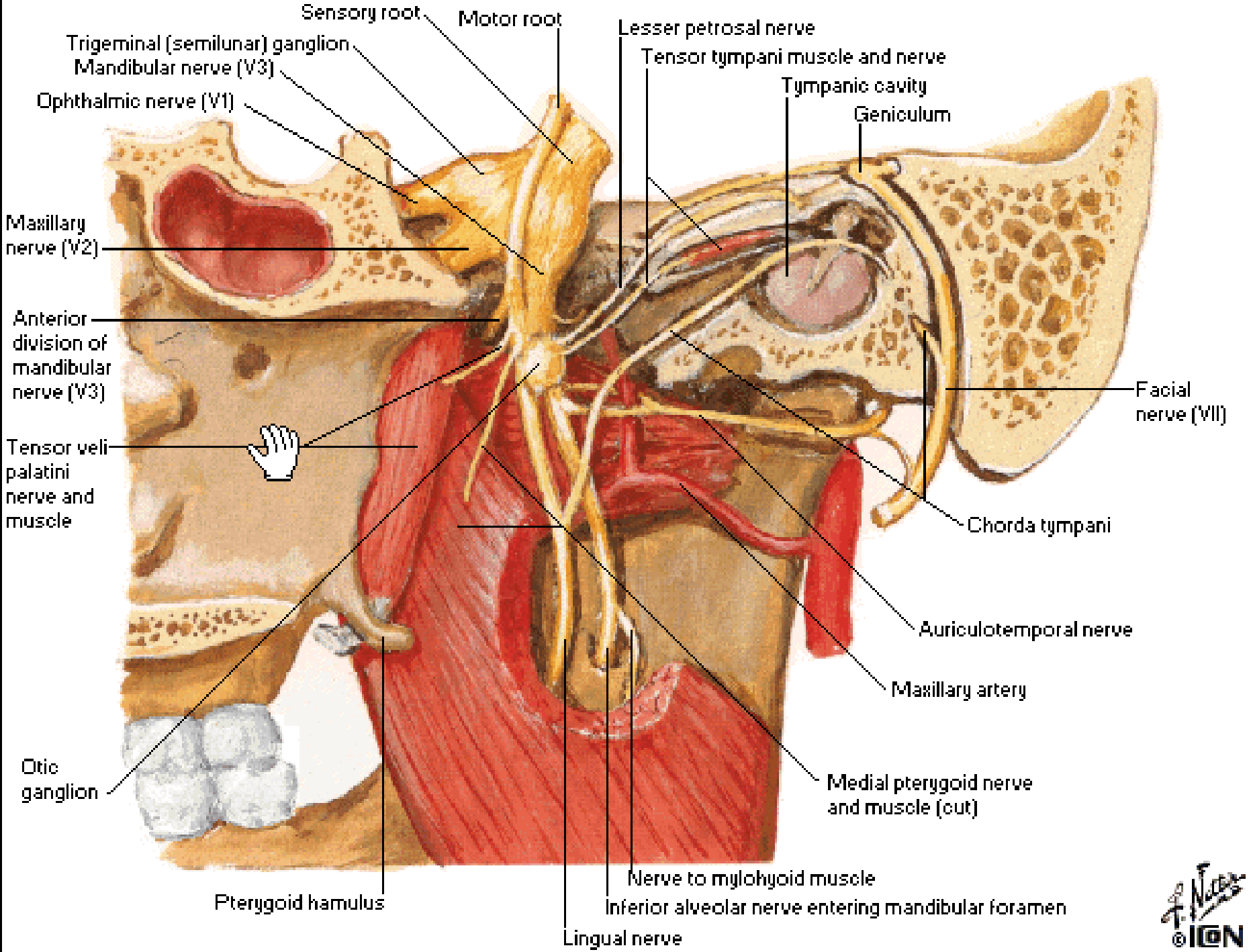
Inferior alveolar nerve (cut)

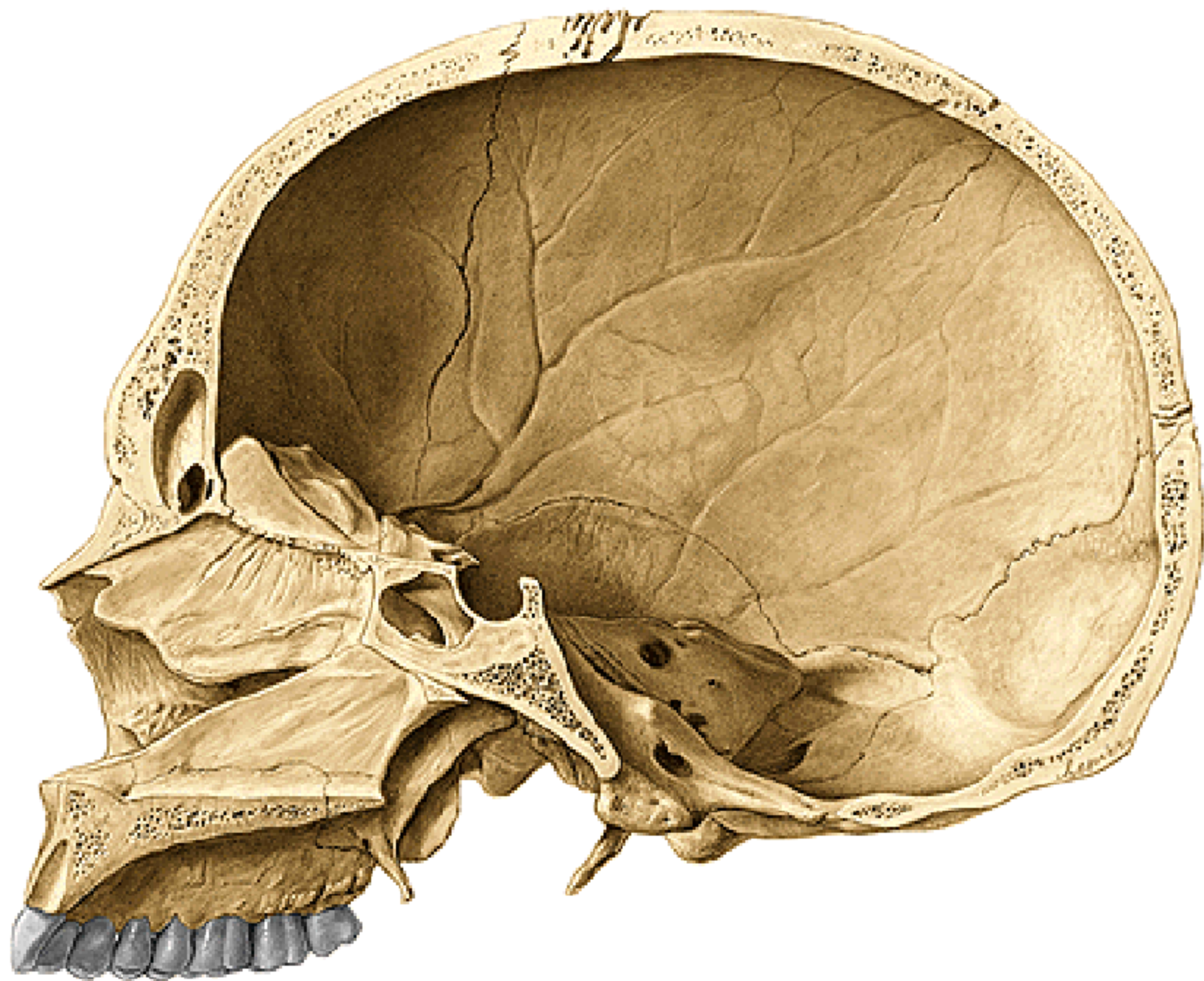
Mylohyoid muscle (cut)

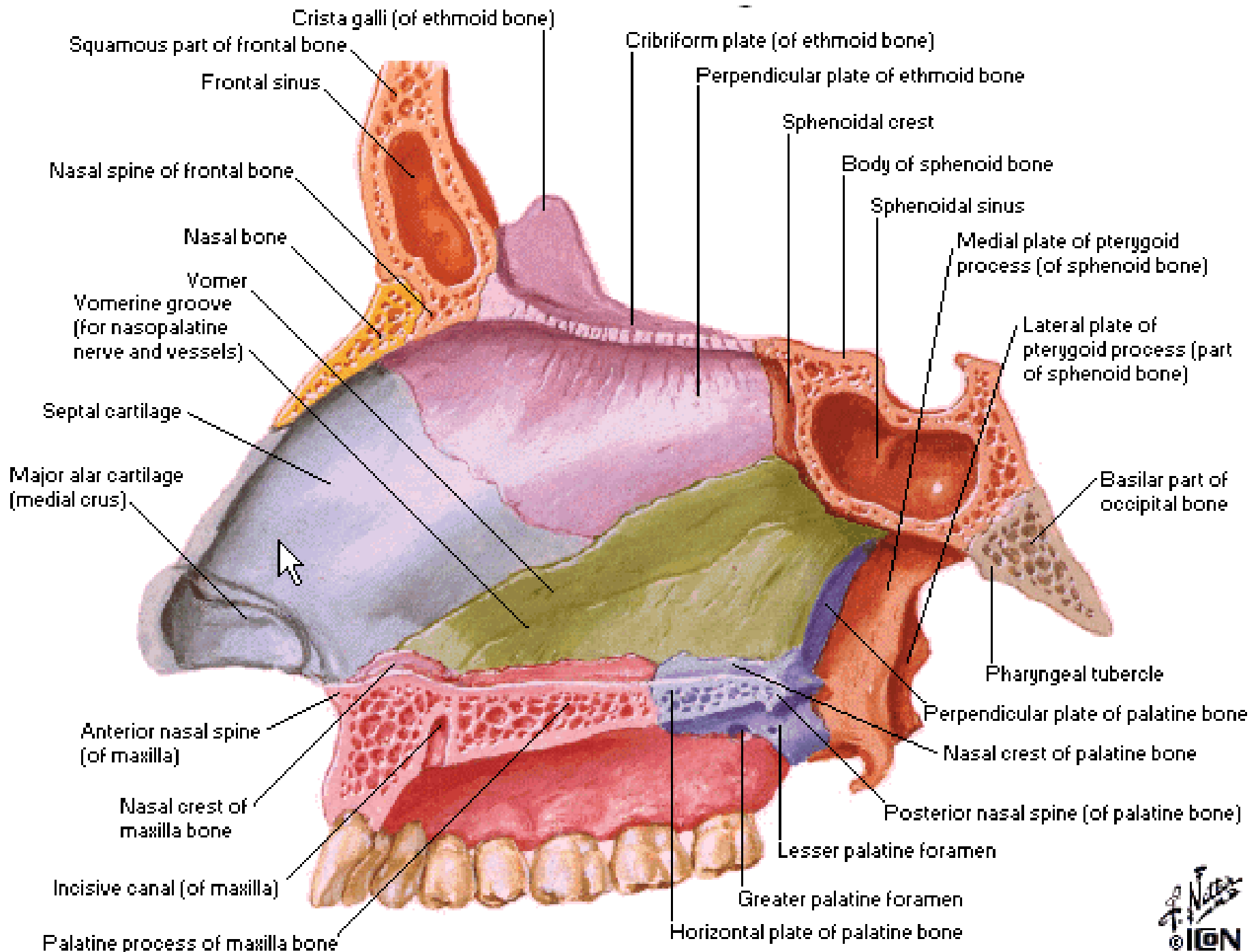
Sublingual nerve

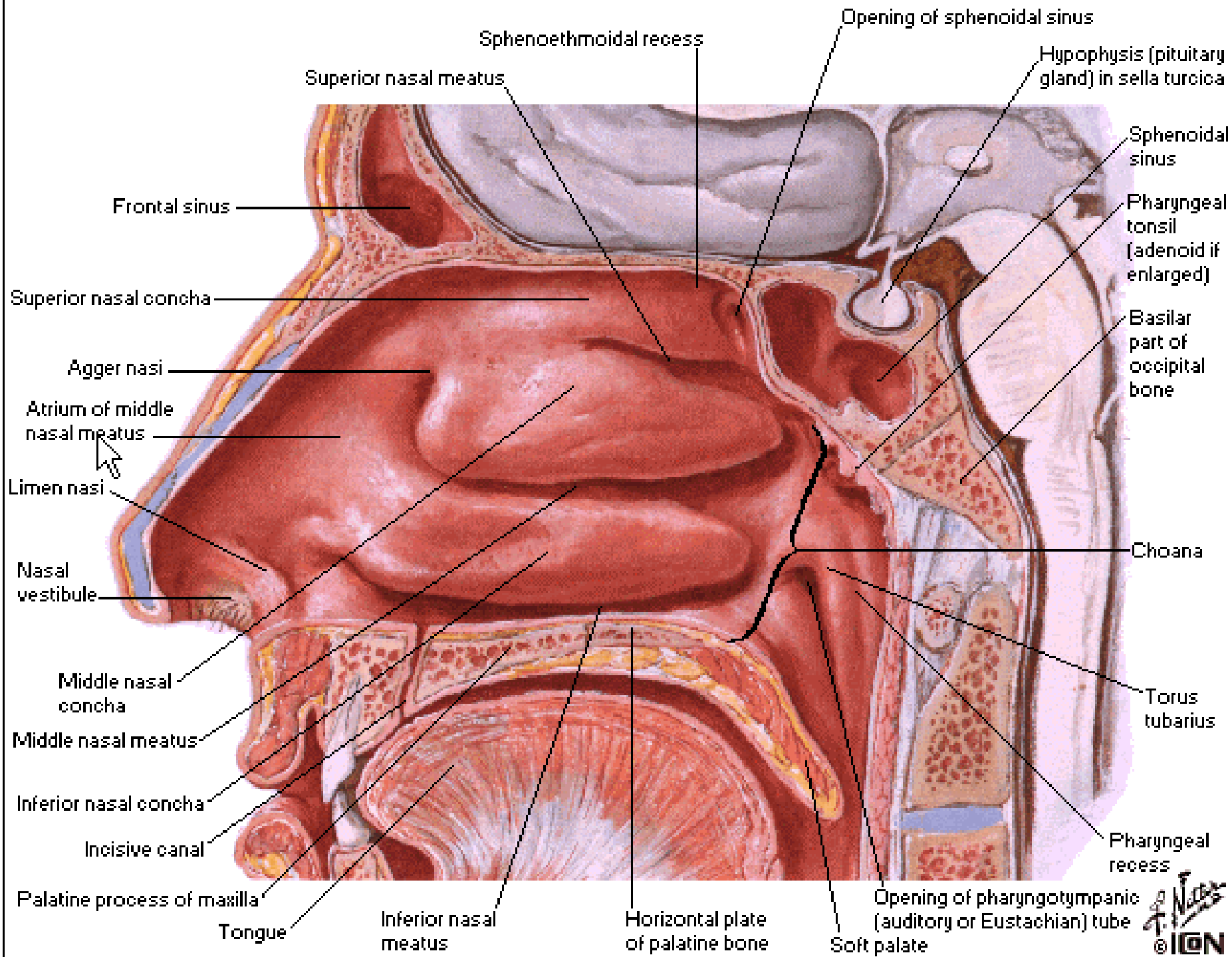
Digastric muscle (anterior belly)

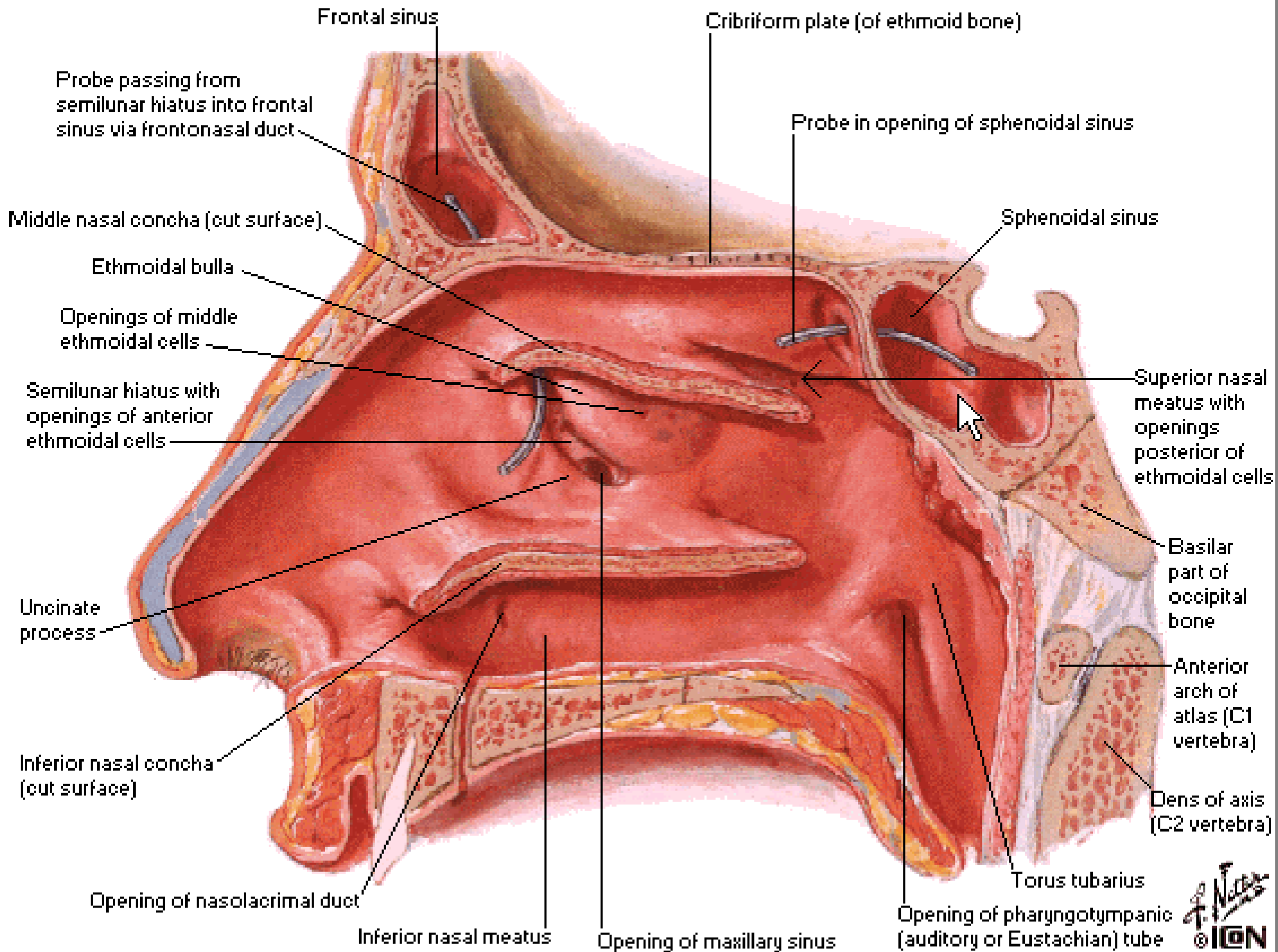












Frontal sinus

Cribriform plate (of ethmoid bone)

Probe passing from semilunar hiatus into frontal sinus via frontonasal duct

Probe in opening of sphenoidal sinus

Middle nasal concha (cut surface)

Sphenoidal sinus

Ethmoidal bulla

Openings of middle ethmoidal cells

Semilunar hiatus with openings of anterior ethmoidal cells

Superior nasal meatus with openings posterior of ethmoidal cells

Uncinate process

Basilar part of occipital bone

Inferior nasal concha (cut surface)

Anterior arch of atlas (C1 vertebra)

Opening of nasolacrimal duct

Inferior nasal meatus

Opening of maxillary sinus

Opening of pharyngotympanic (auditory or Eustachian) tube

Dens of axis (C2 vertebra)

Torus tubarius

