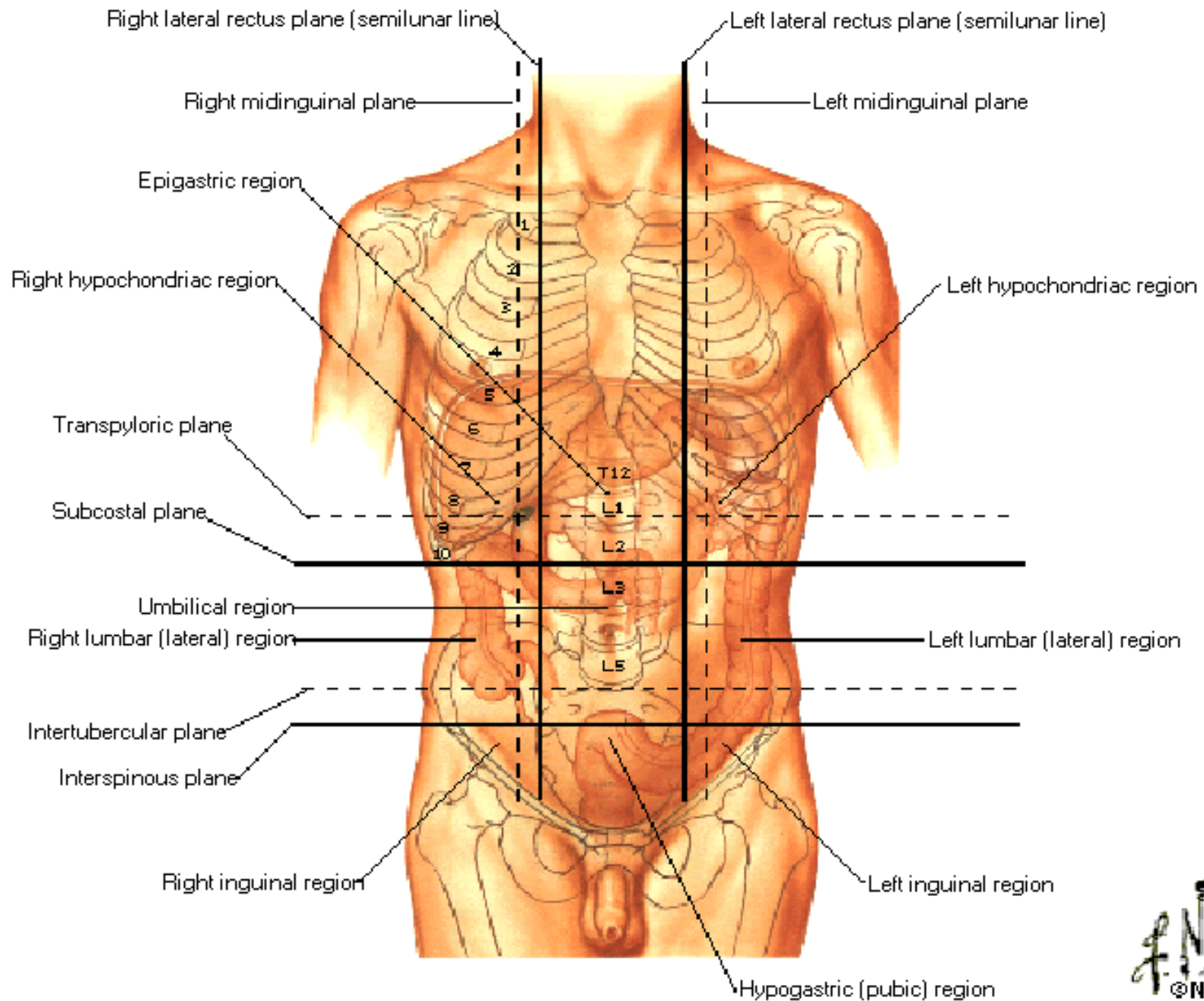


Regions and Planes of Abdomen



Midclavicular
line

Abdominal
part of
esophagus

Liver

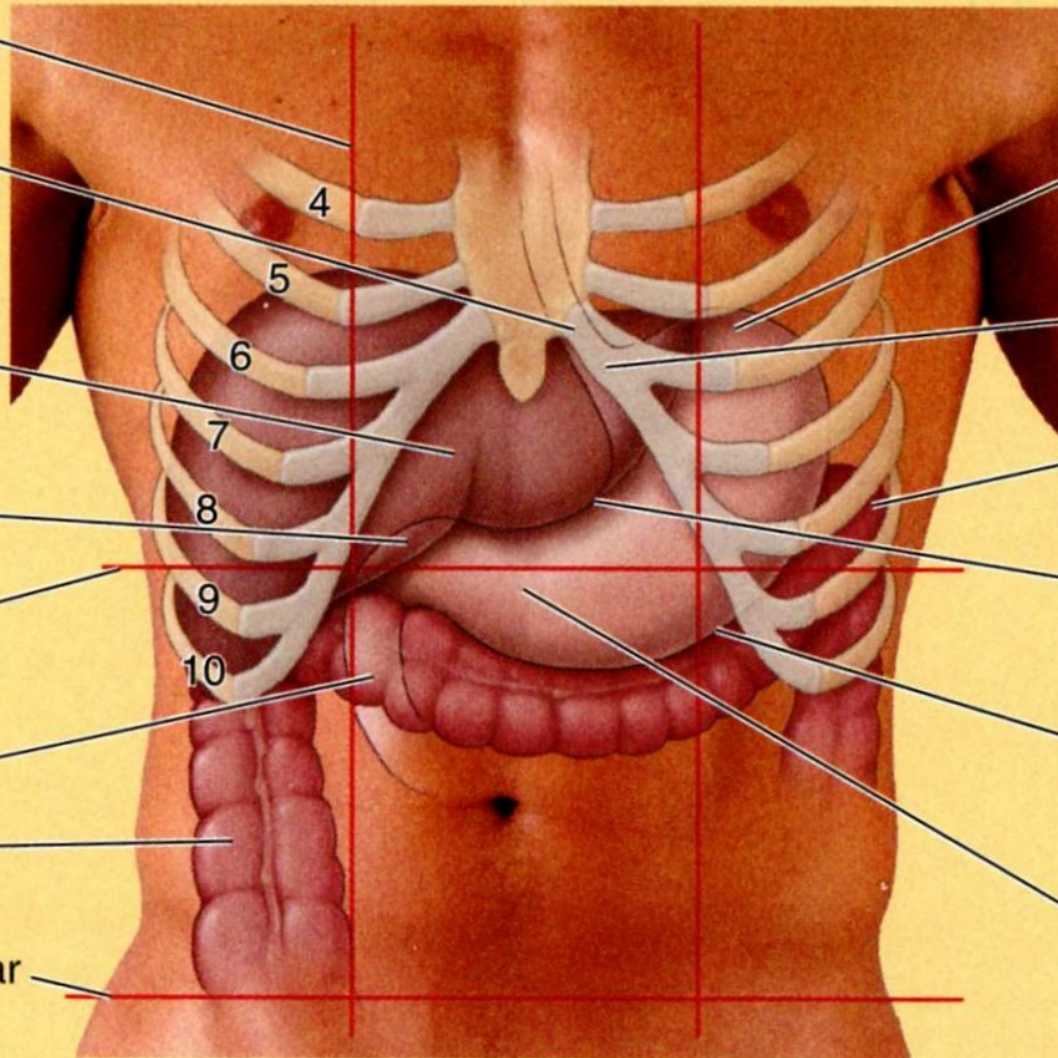
Pylorus

Transpyloric
plane

Duodenum

Ascending
colon

Transtubercular
plane



Fundus of
stomach

Cardial orifice
of stomach

Left colic
flexure

Lesser curvature
of stomach

Greater curvature
of stomach

Pyloric antrum

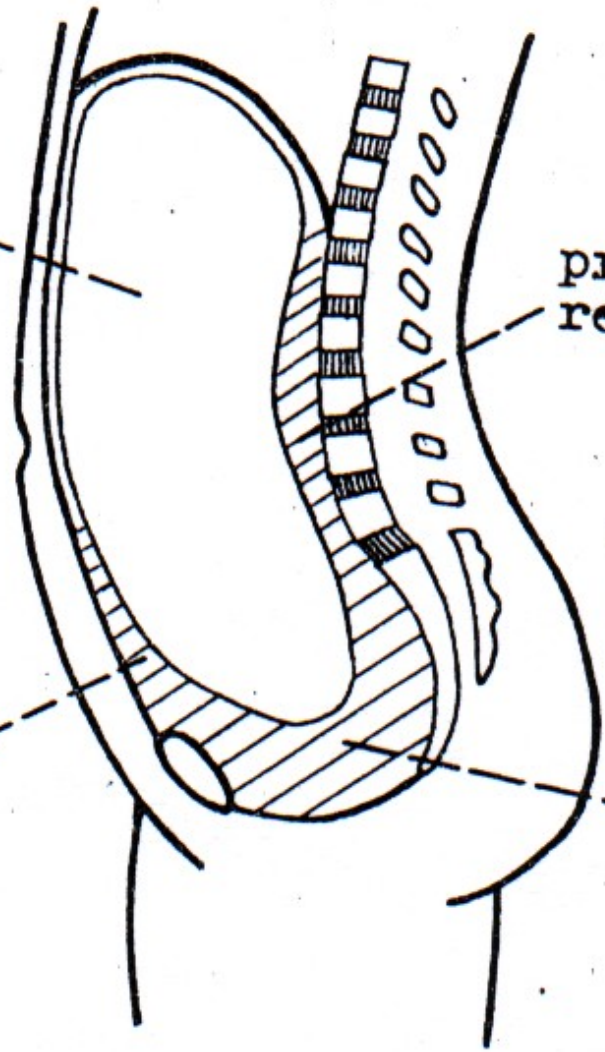
Anterior view in supine position

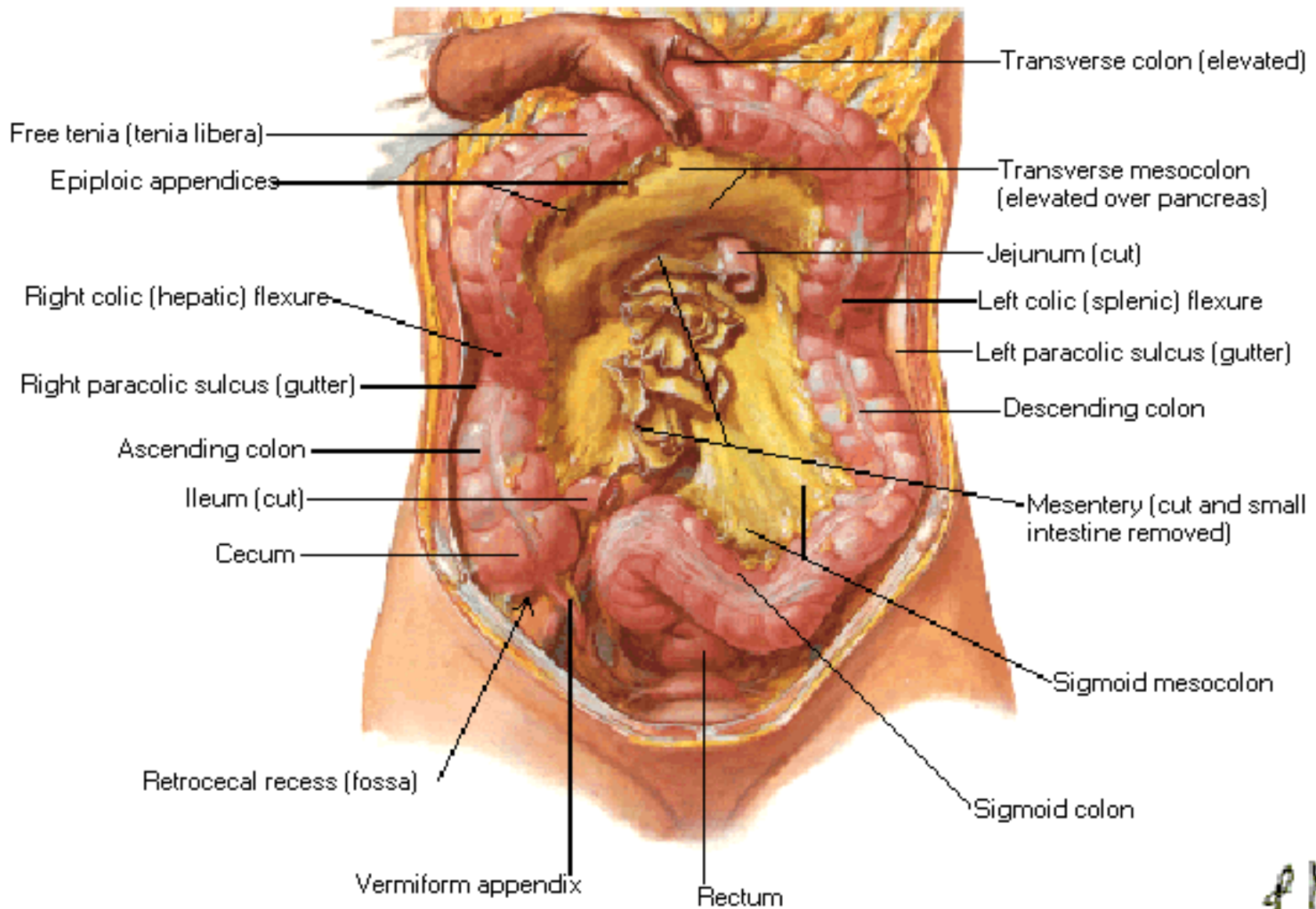
cavum
peritonei.

prostor
retroperitoneální

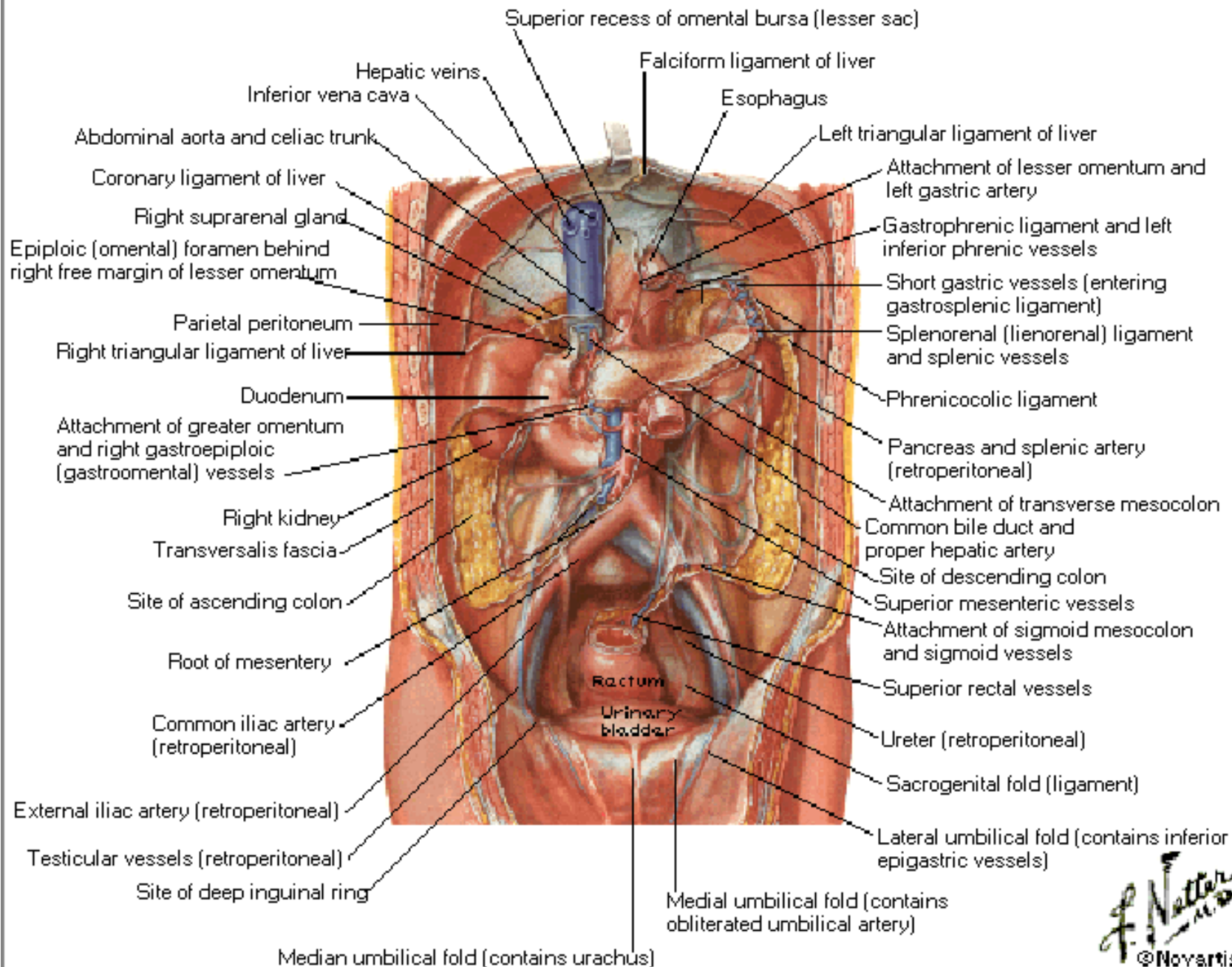
prostor
preperitoneální

prostor
infraperitoneální



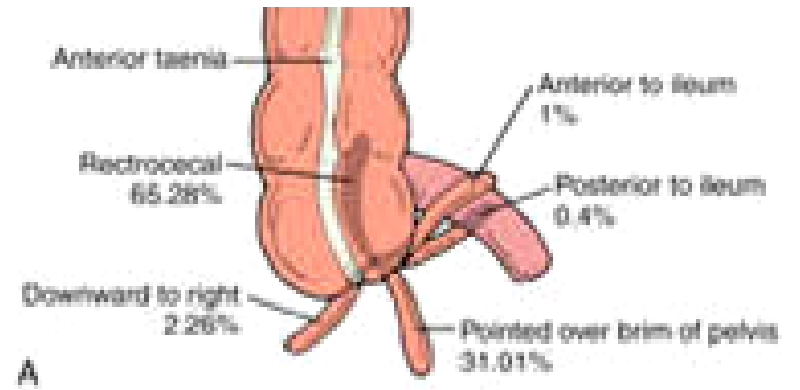
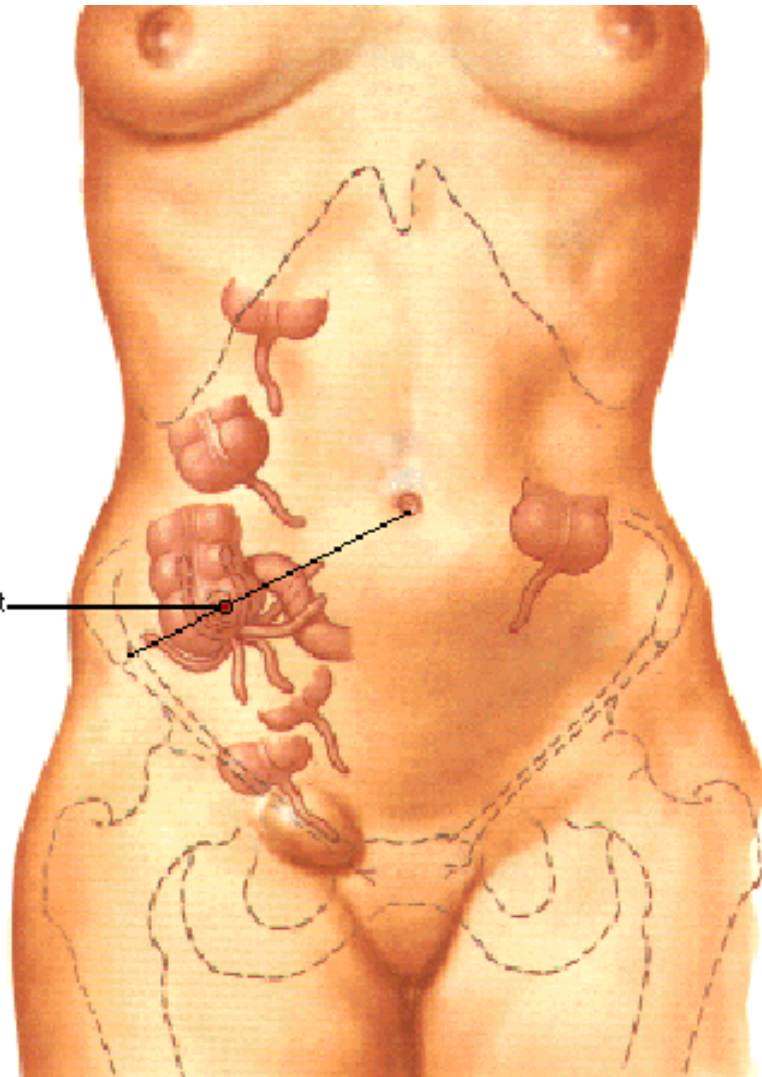


Peritoneum of Posterior Abdominal Wall





McBurney's point



medioklavikulární čára

spojnice pupku
s vrcholem axily

projekce žlučníku

Desjardinsův
pankreatický bod

Monroova čára

Mac Burneův bod

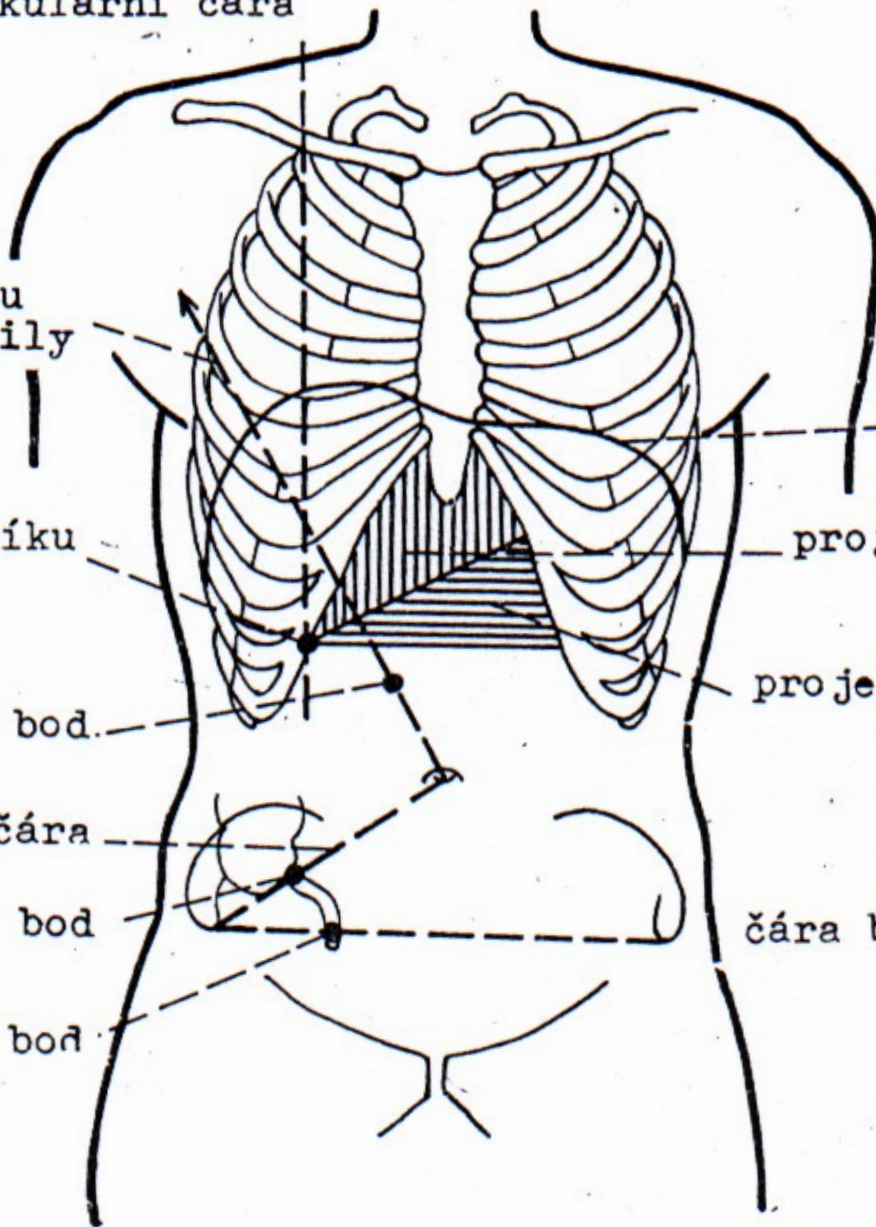
Lanzův bod

bránice

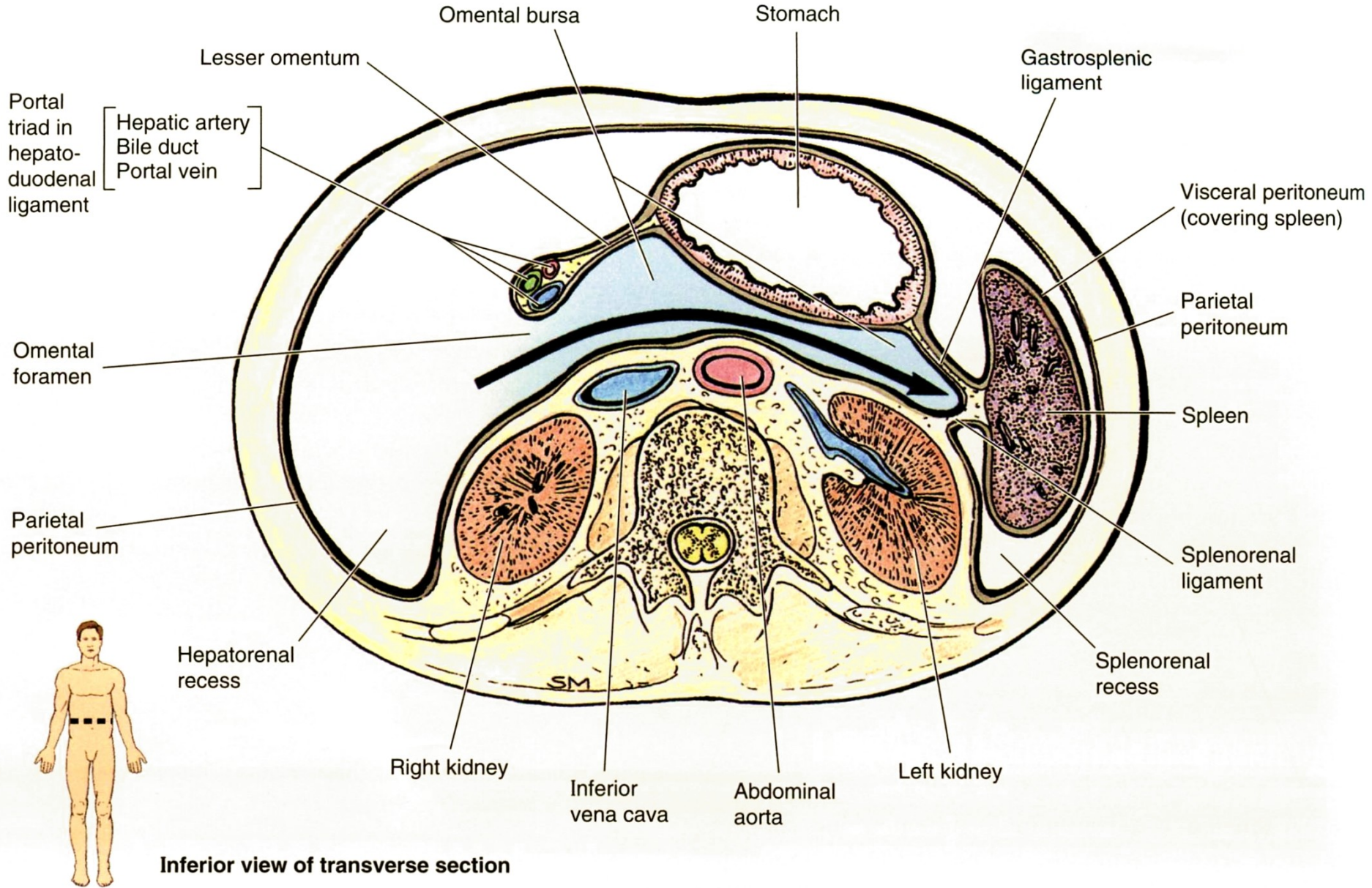
projekce jater

projekce žaludku

čára bispinální



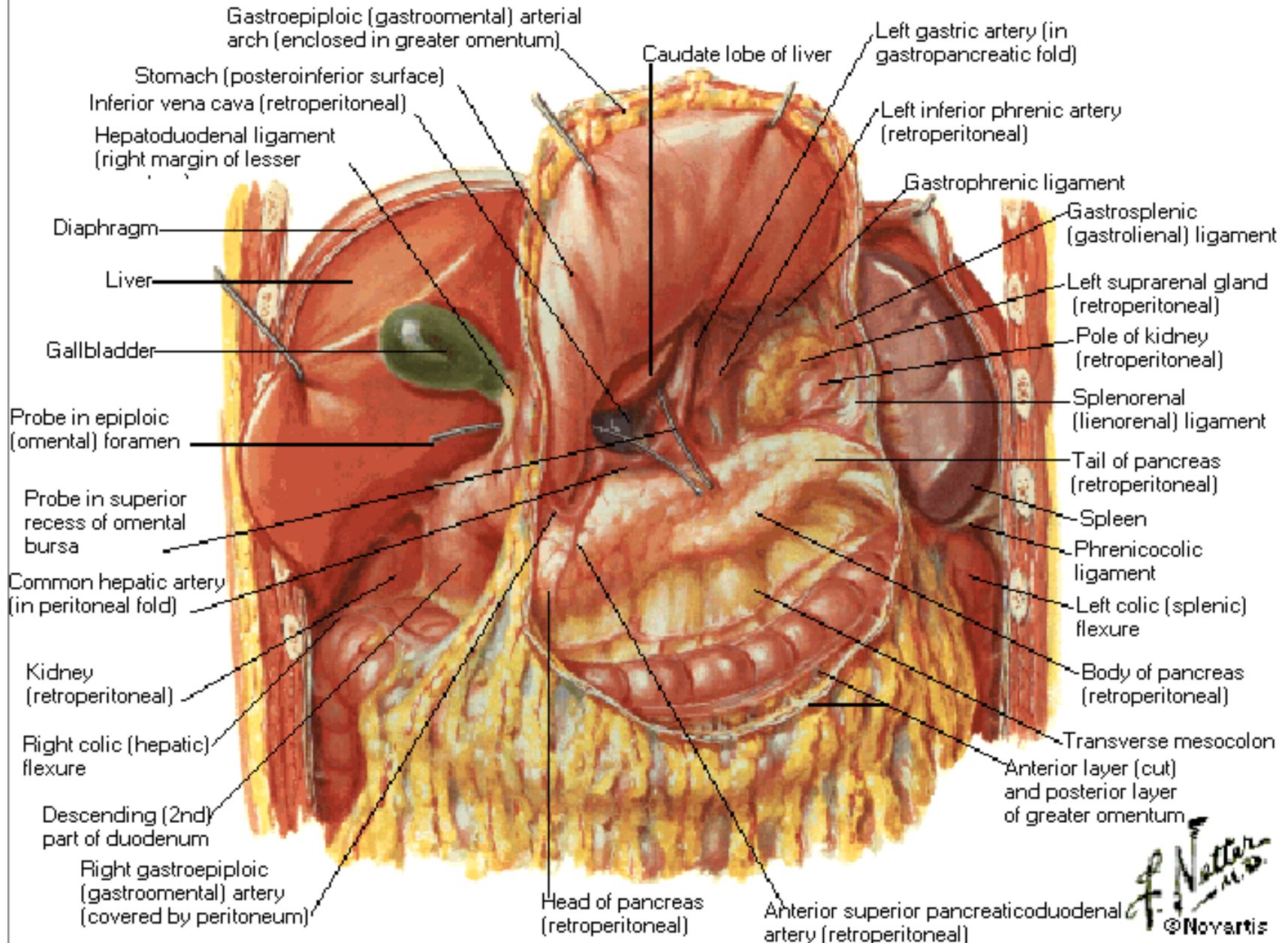
Abdominal Wall and Viscera





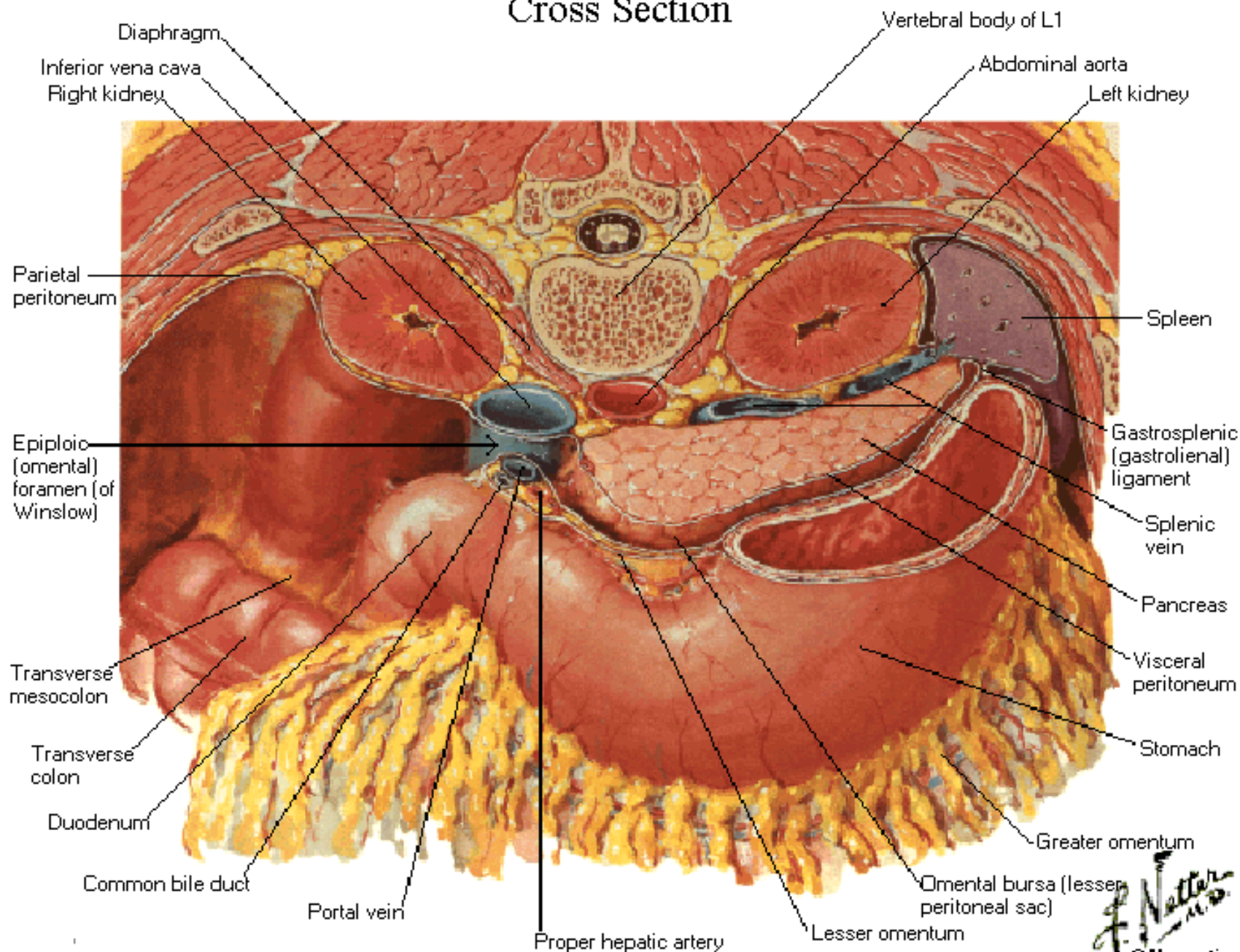
Omental Bursa

Stomach Reflected



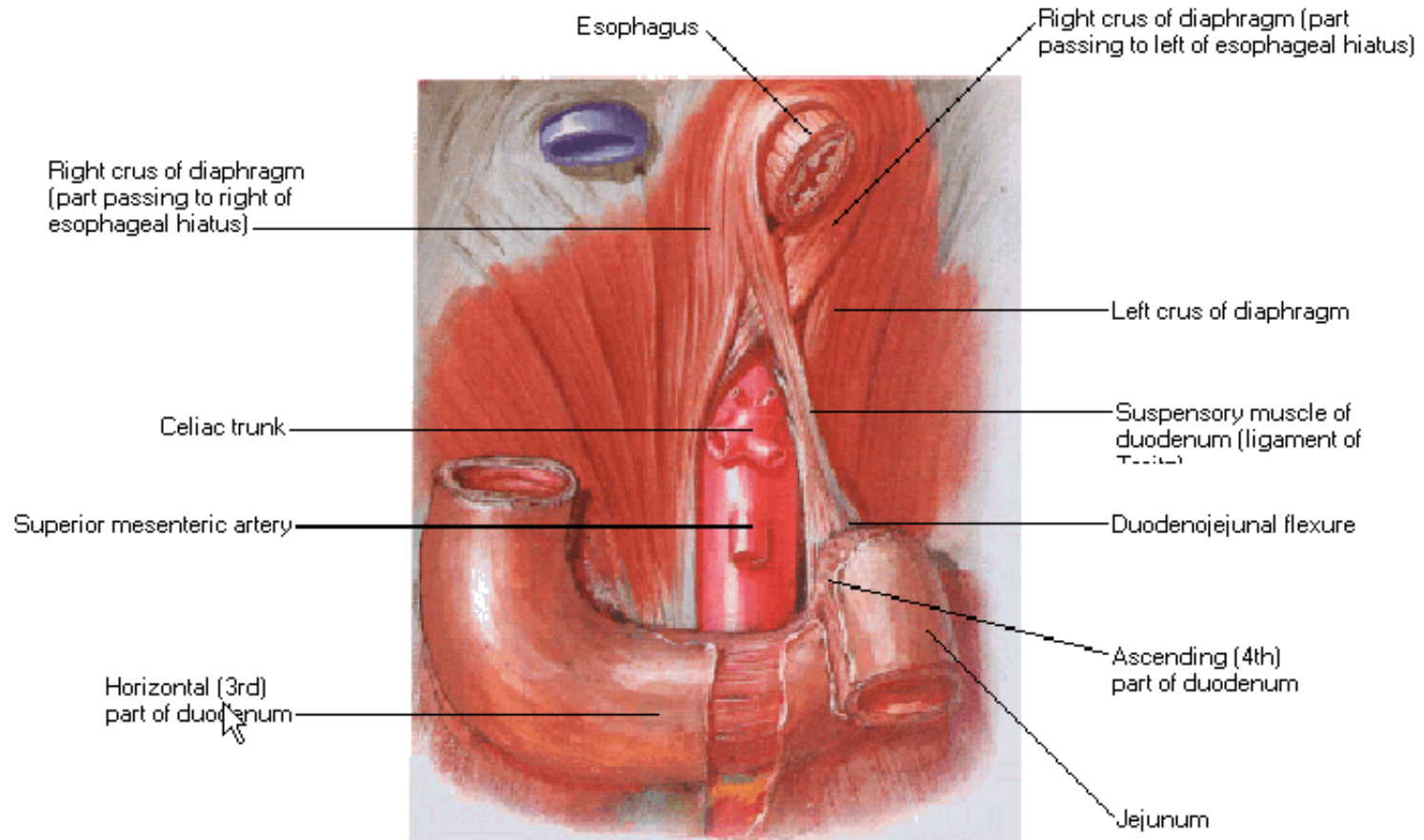
Omental Bursa

Cross Section



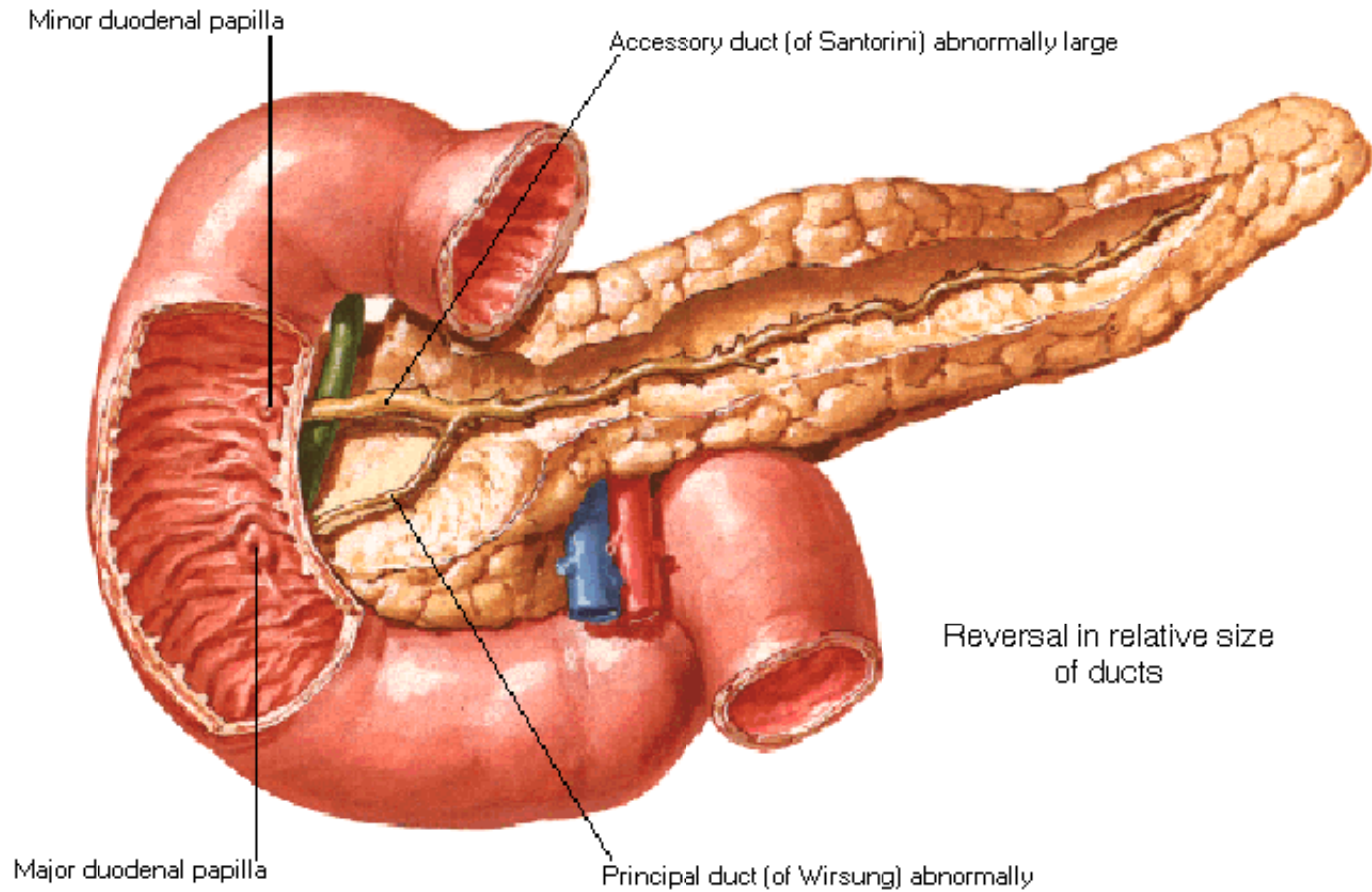
Mesenteric Relations of Intestines

Suspensory Muscle of Duodenum

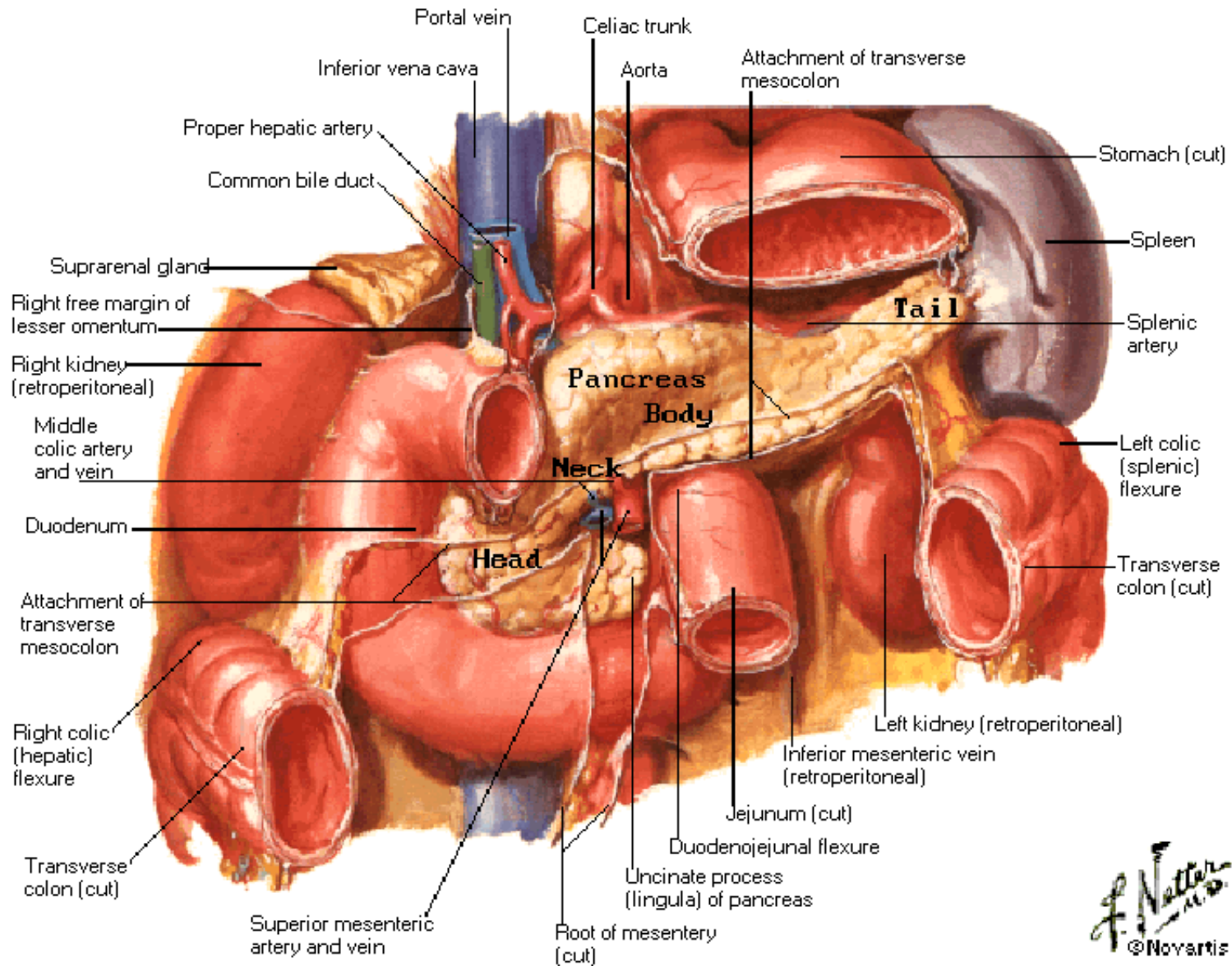


Exposure of suspensory muscle of duodenum (ligament of Treitz)

Variations in Pancreatic Ducts

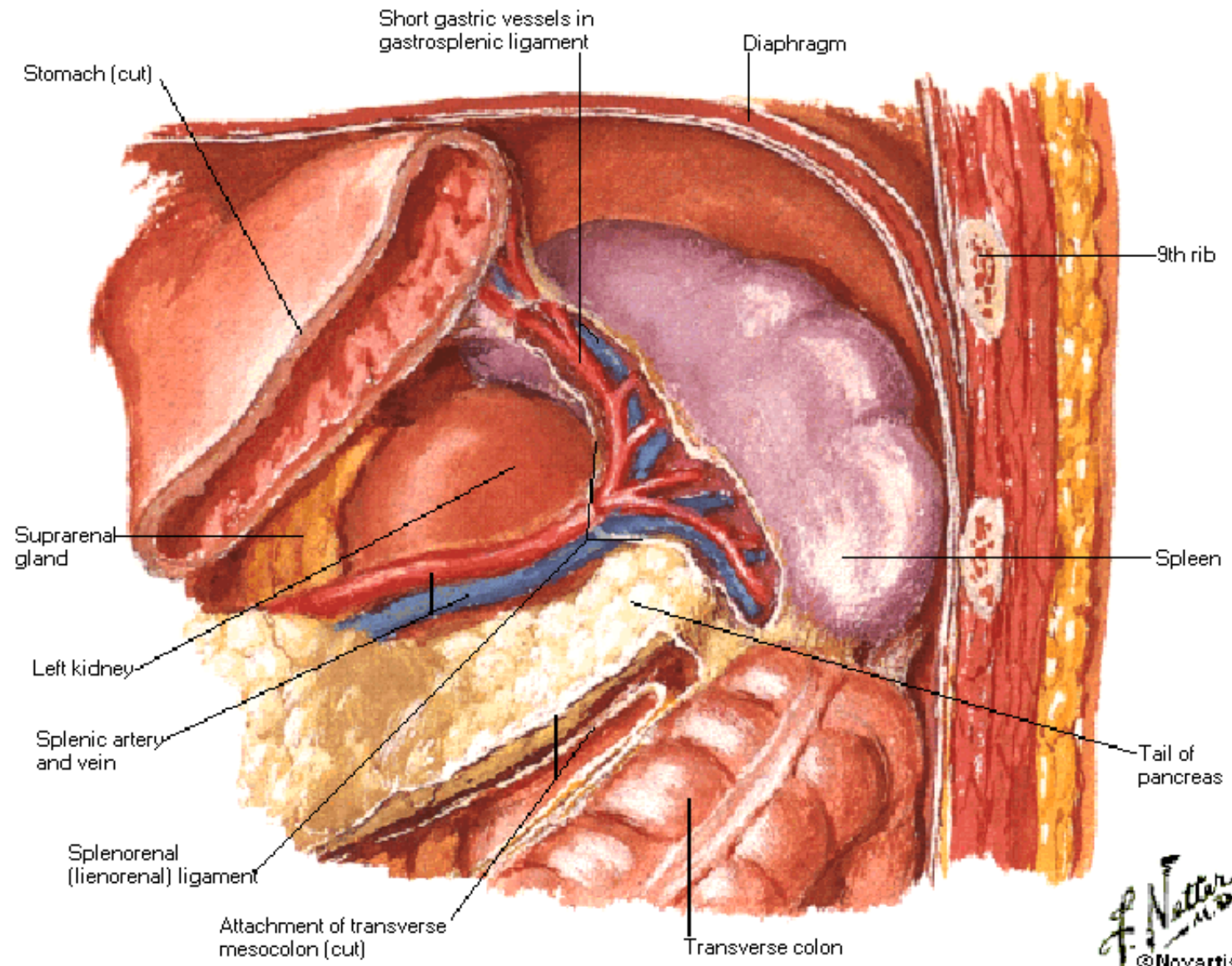


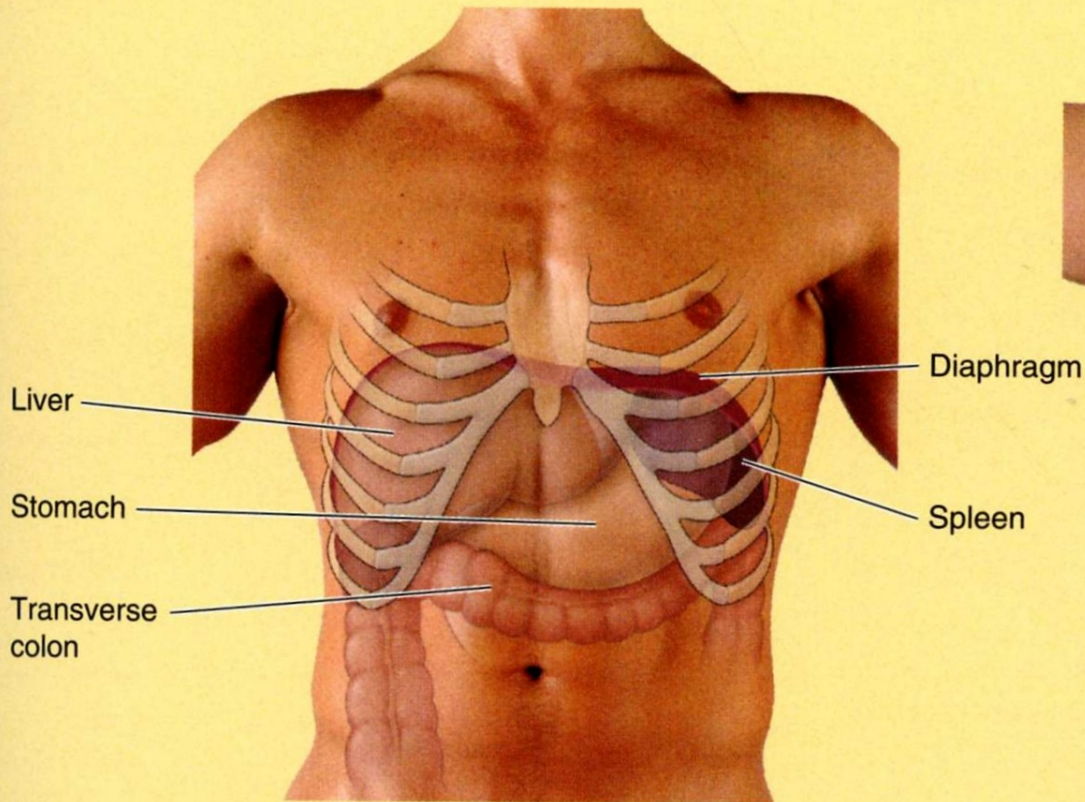
Pancreas in Situ



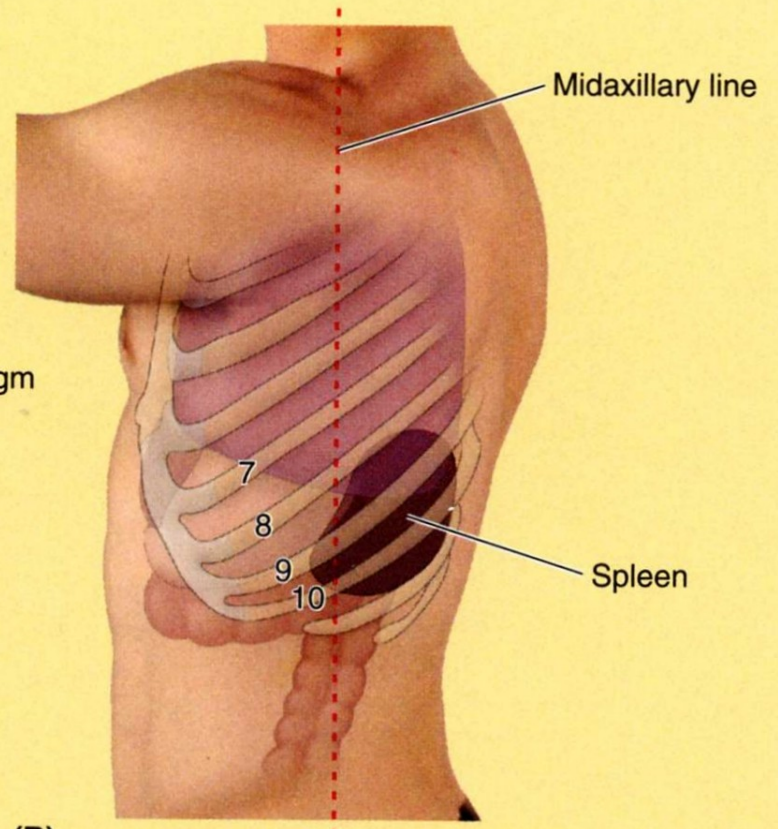
F. Netter M.D.
©Novartis

Spleen in Situ

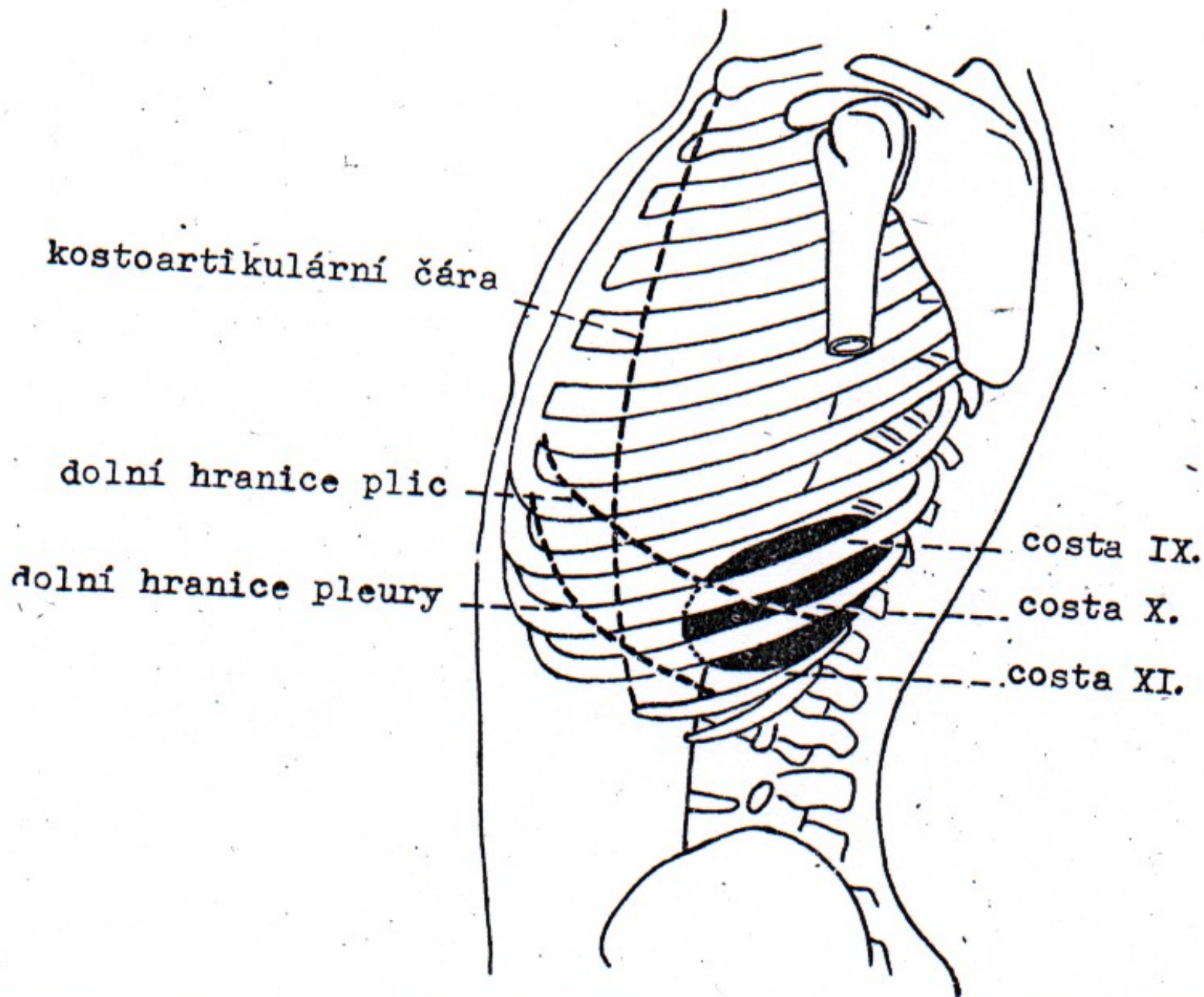




(A)

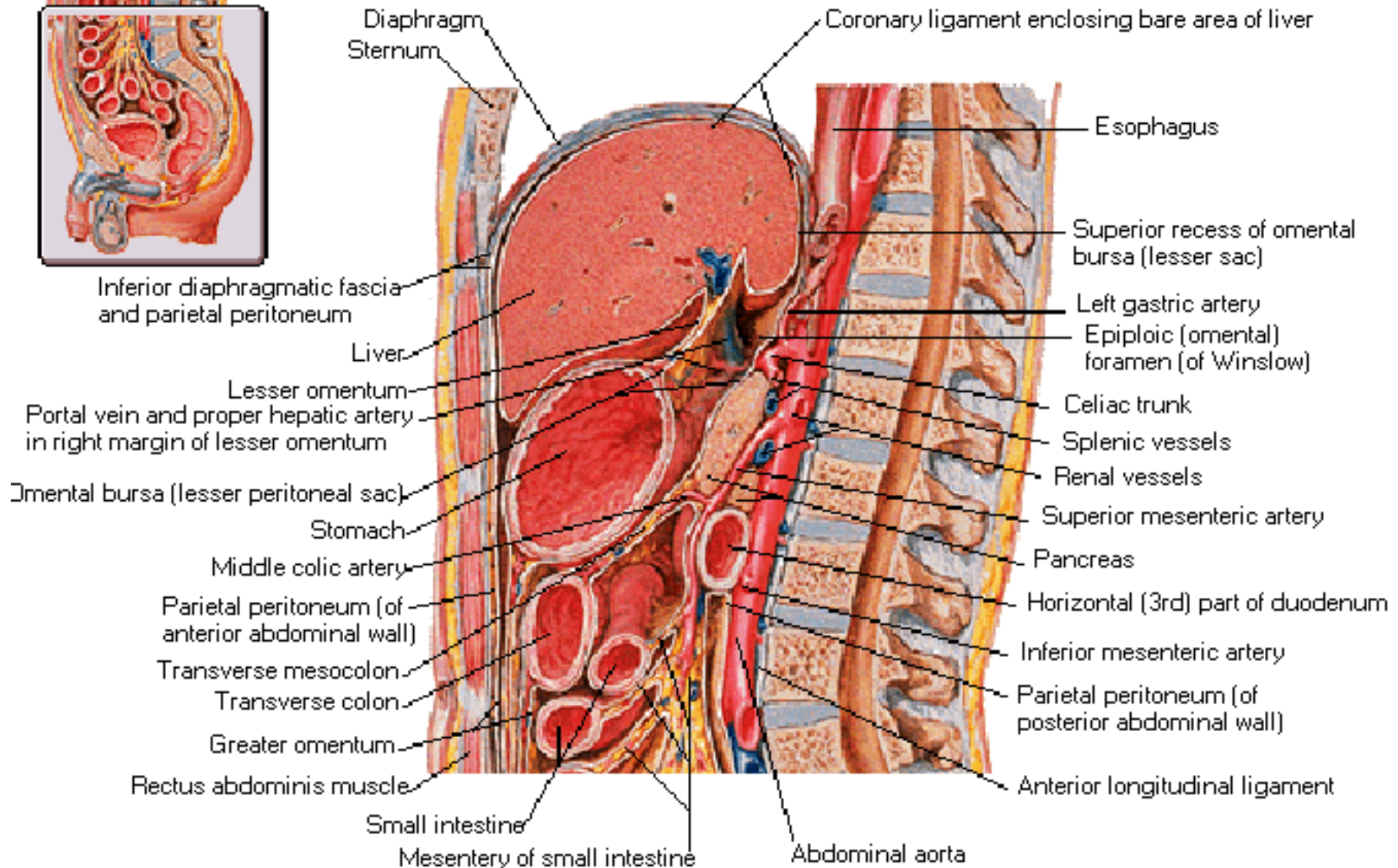


(B)

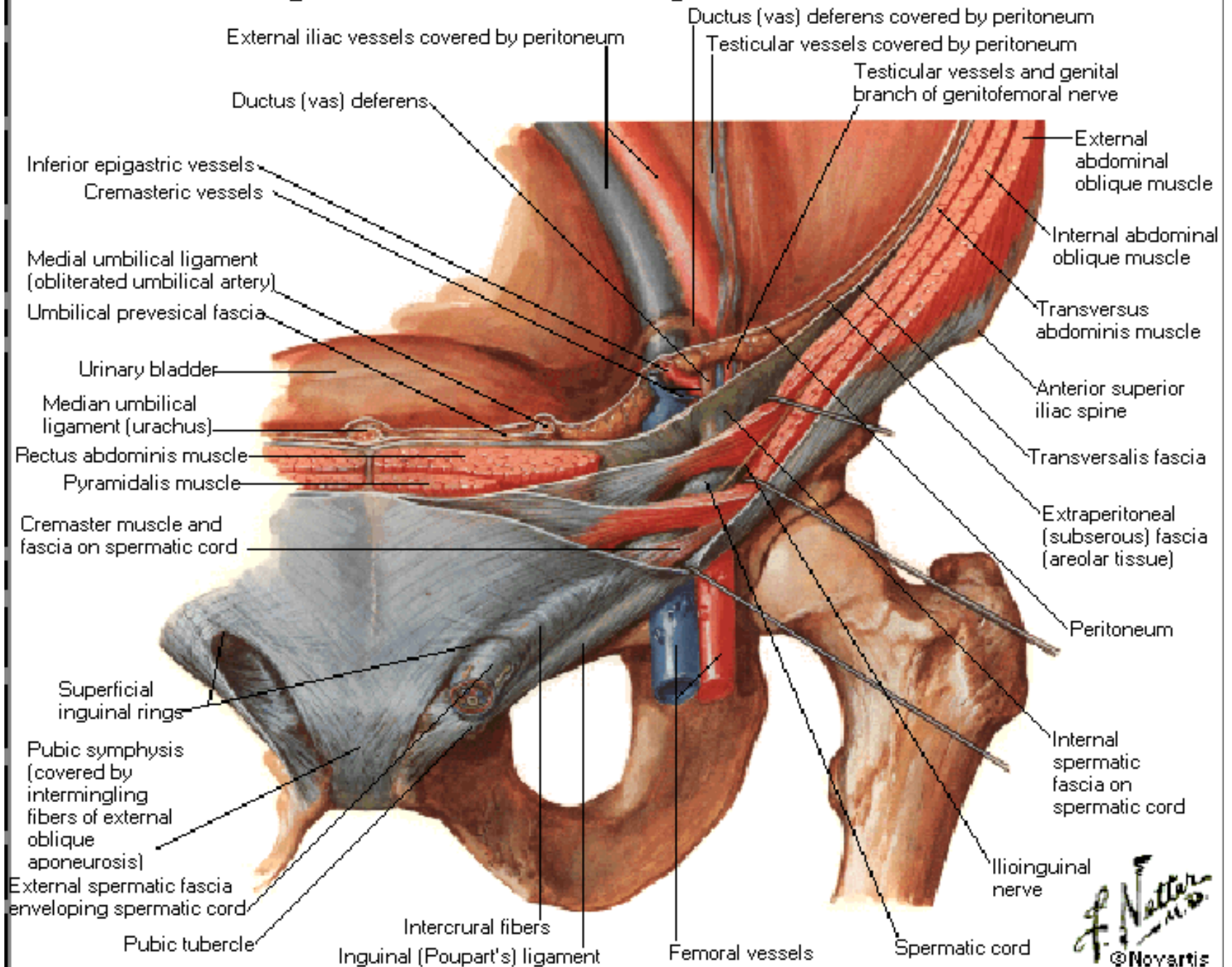


Abdominal Wall and Viscera [Above L4]

Midsagittal Section

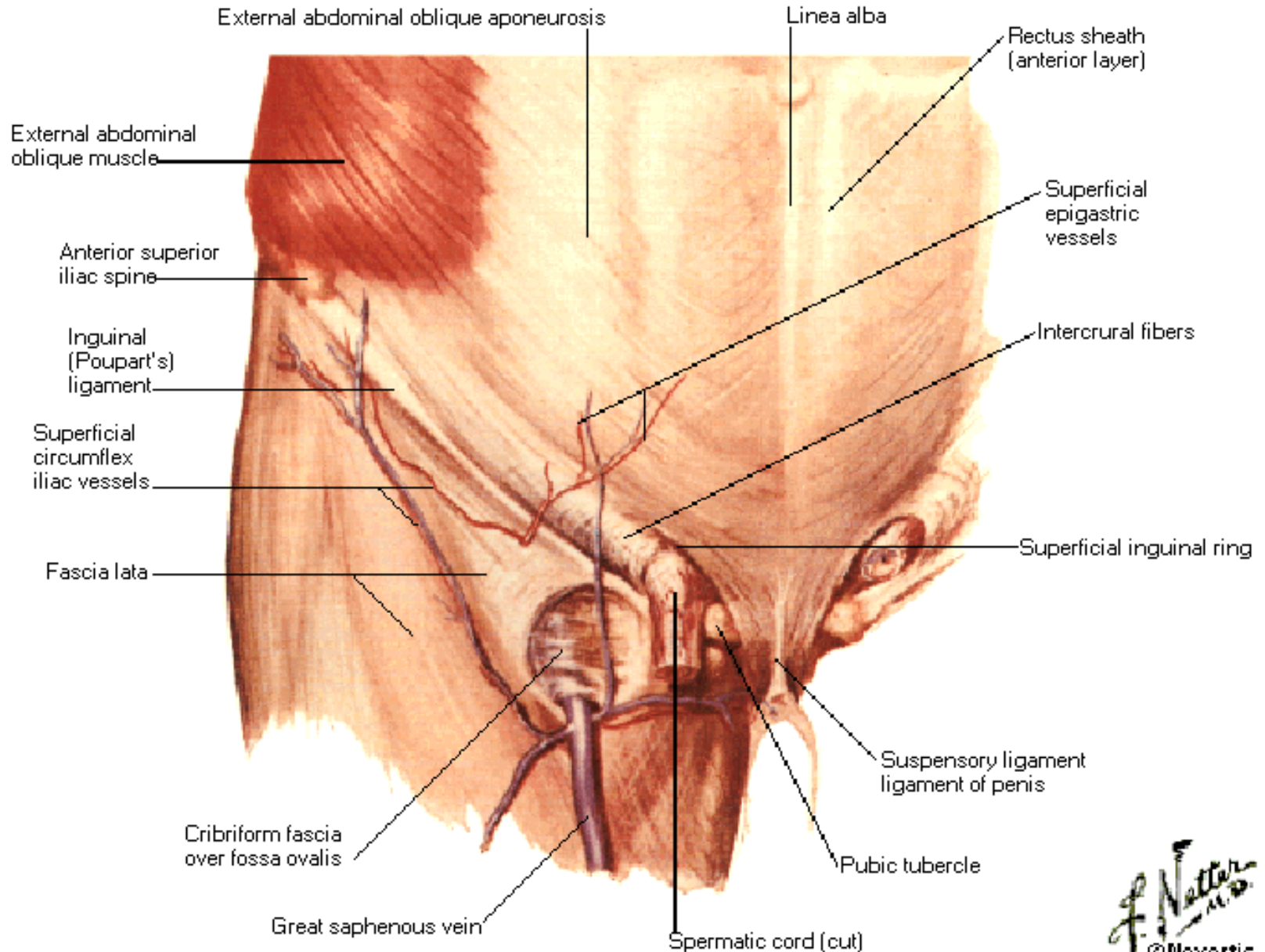


Inguinal Canal and Spermatic Cord



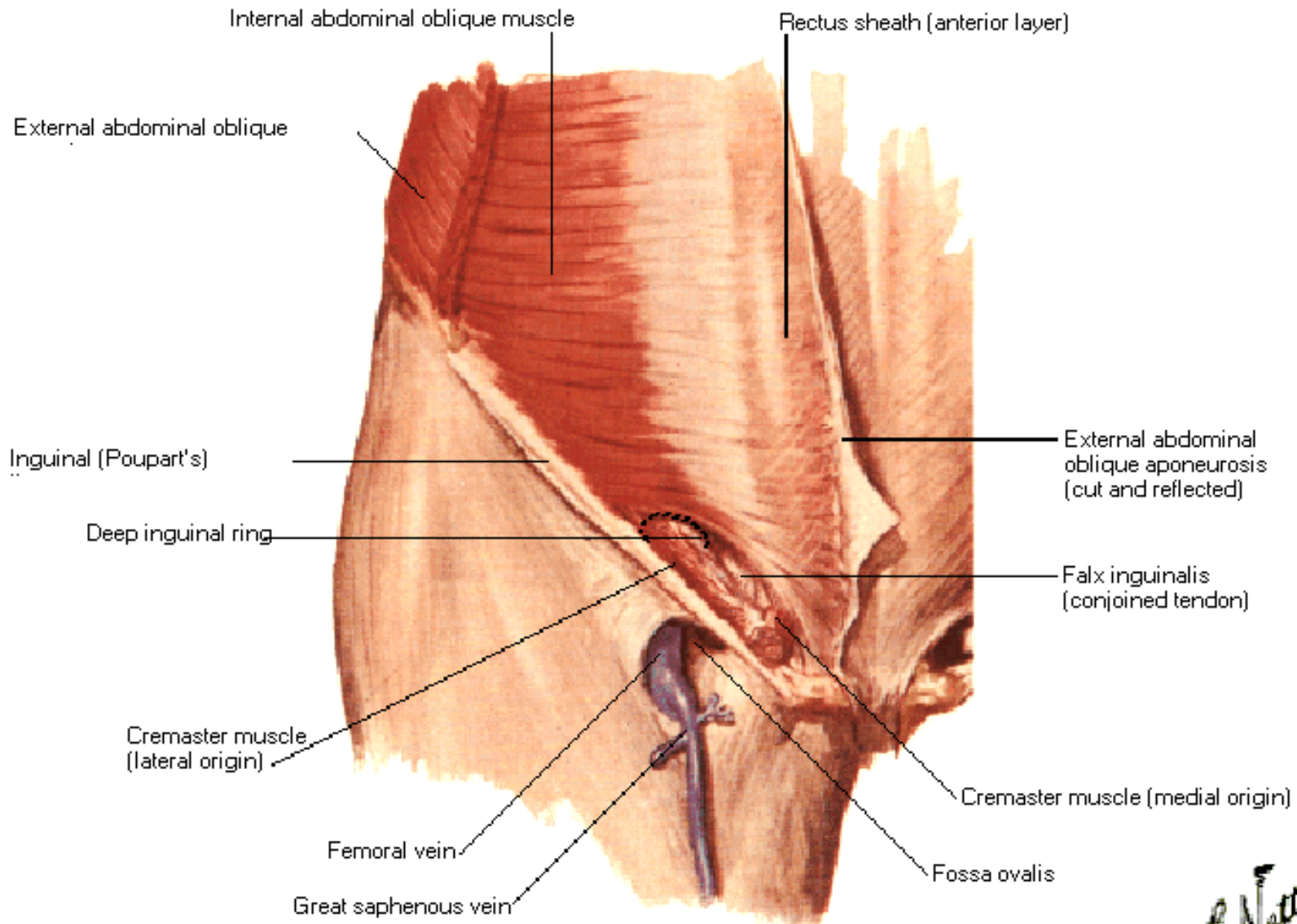
Inguinal and Femoral Regions

Subcutaneous Fascia Removed



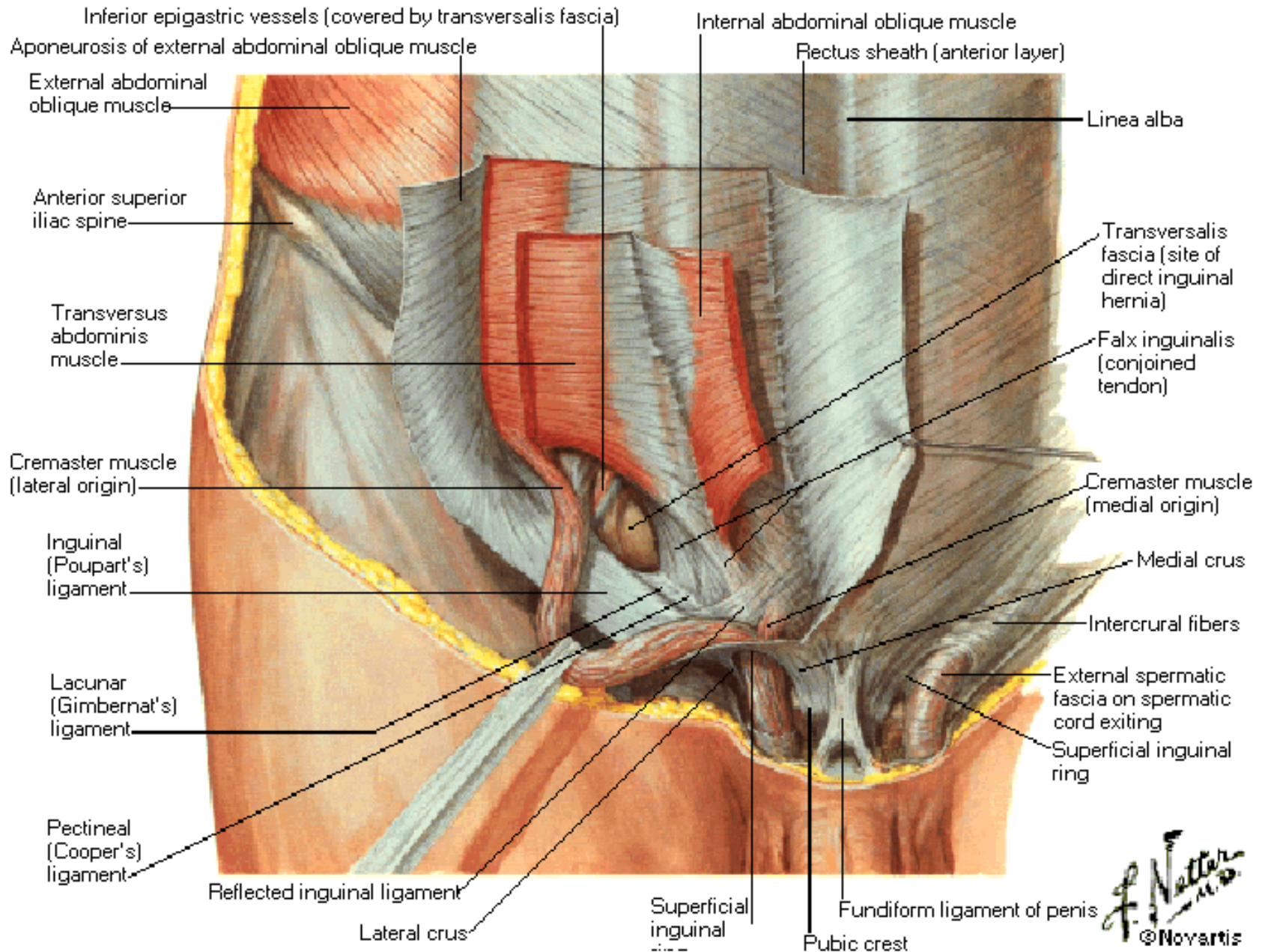
Inguinal and Femoral Regions

Cribriform Fascia Removed



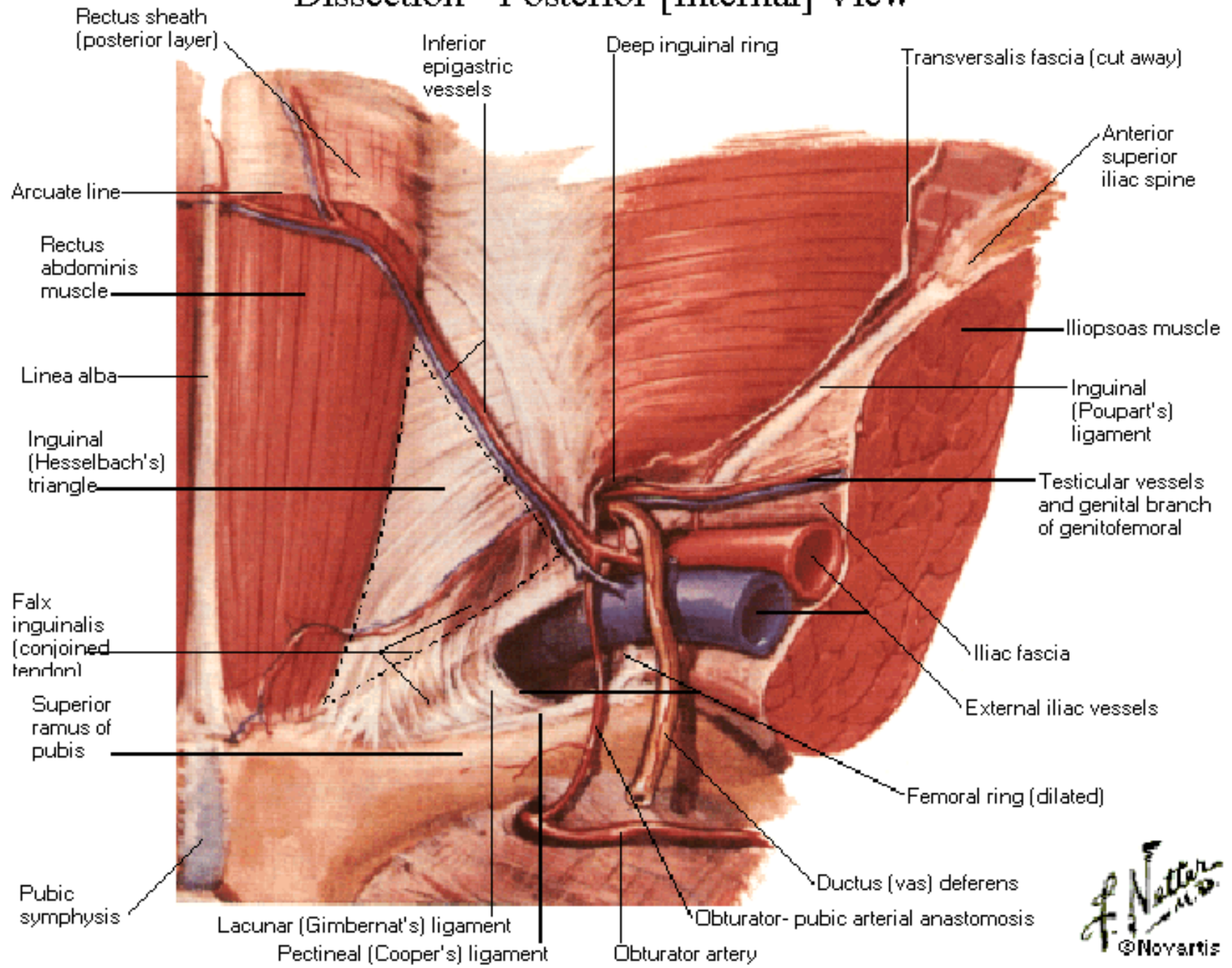
Inguinal Region

Dissection - Anterior View



Inguinal Region

Dissection - Posterior [Internal] View



Femoral Sheath and Inguinal Canal

