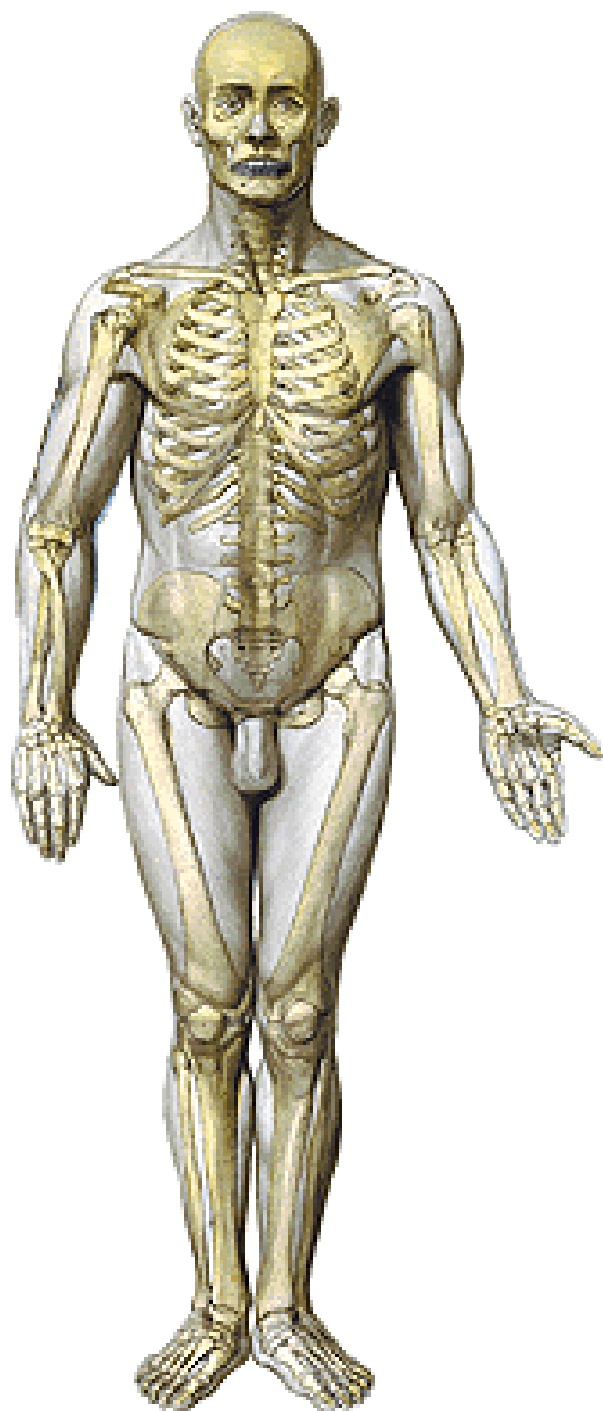
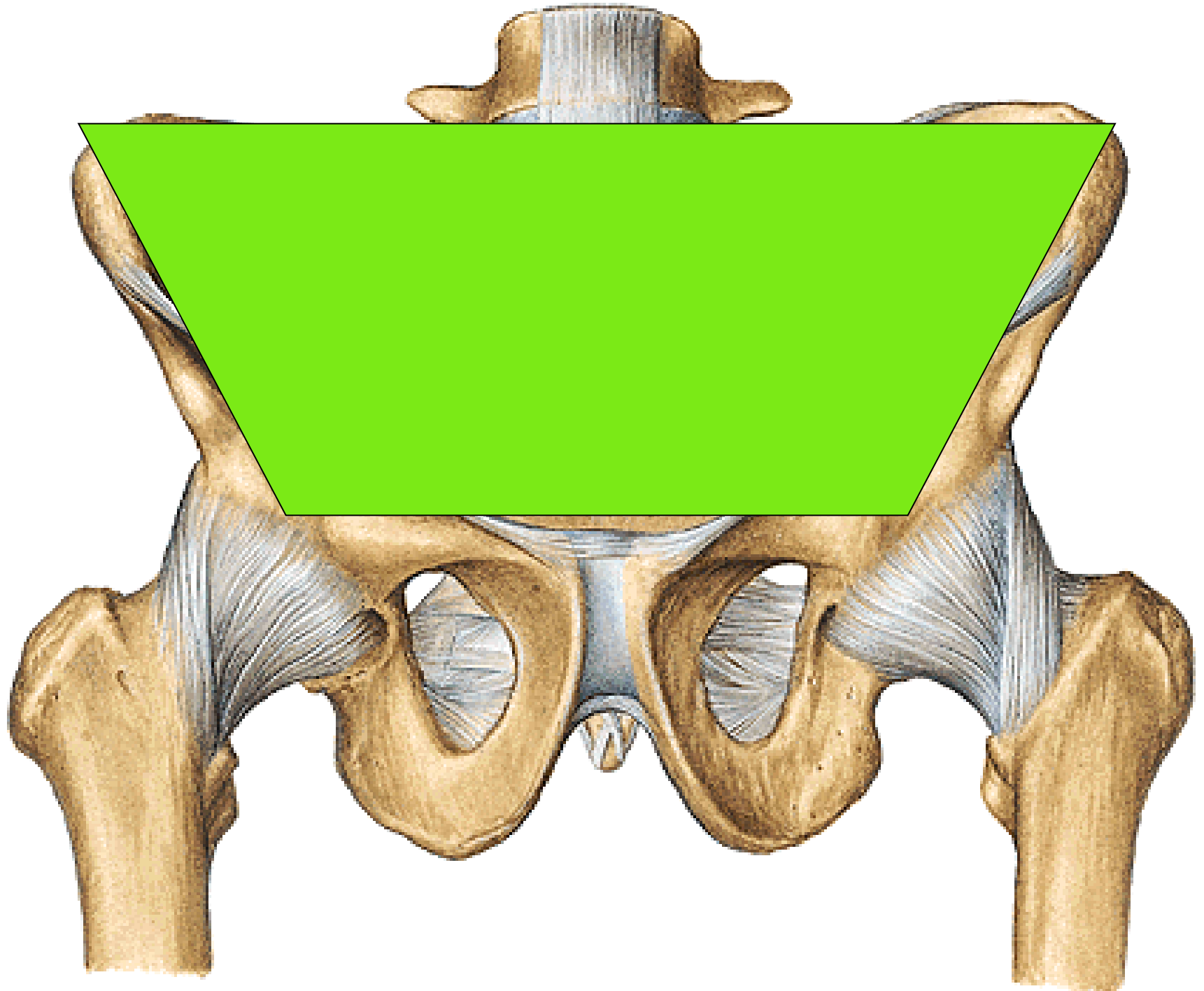
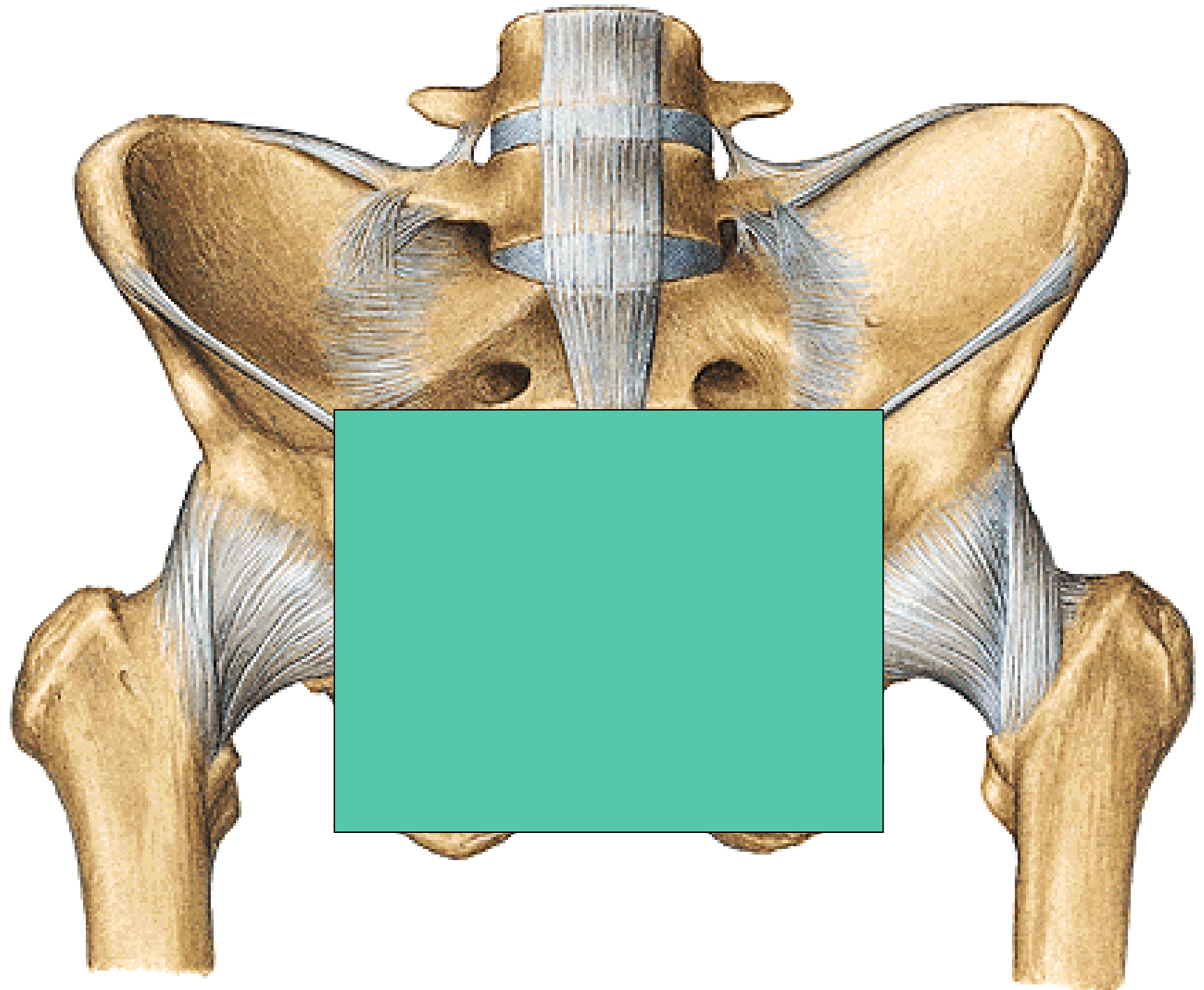
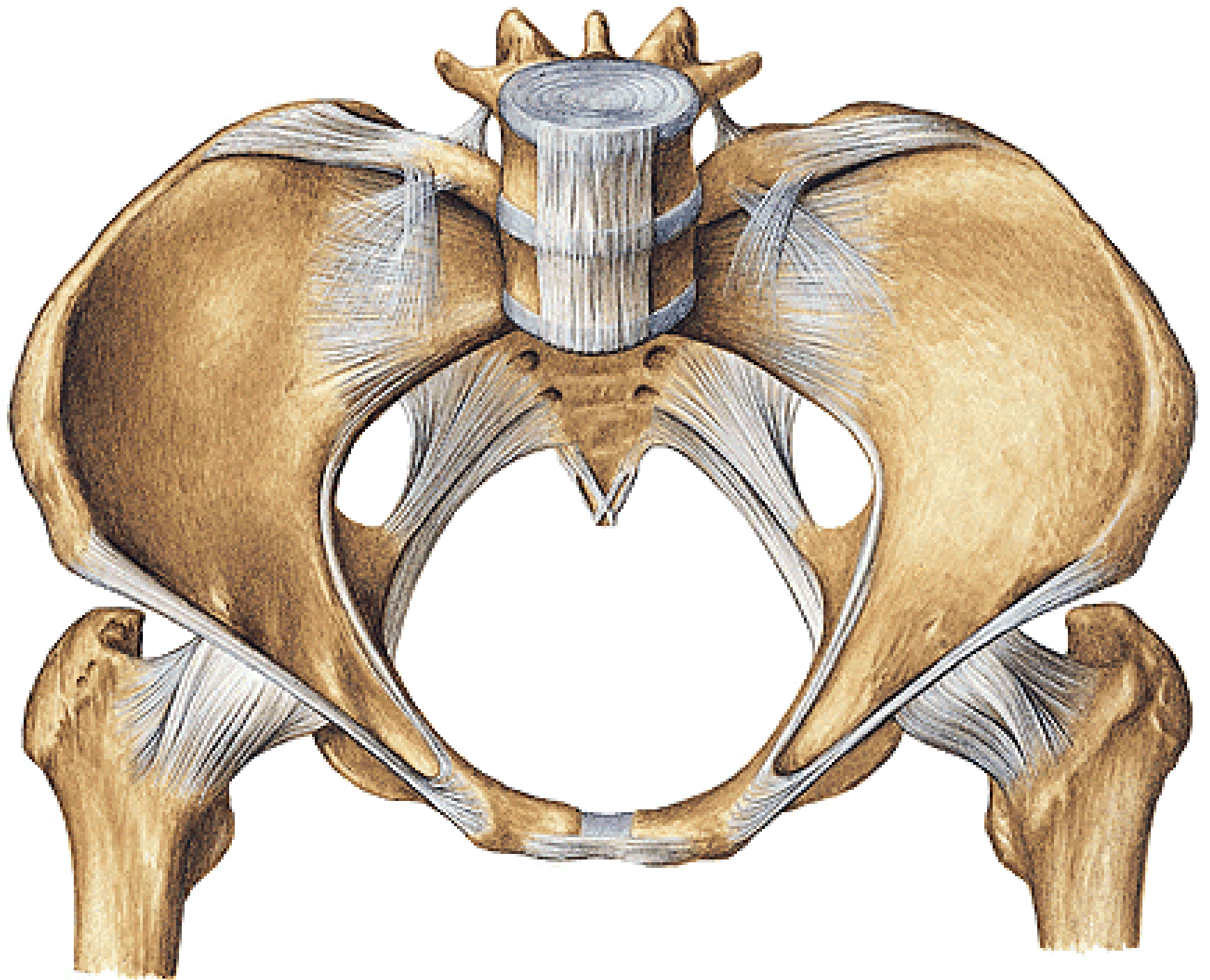


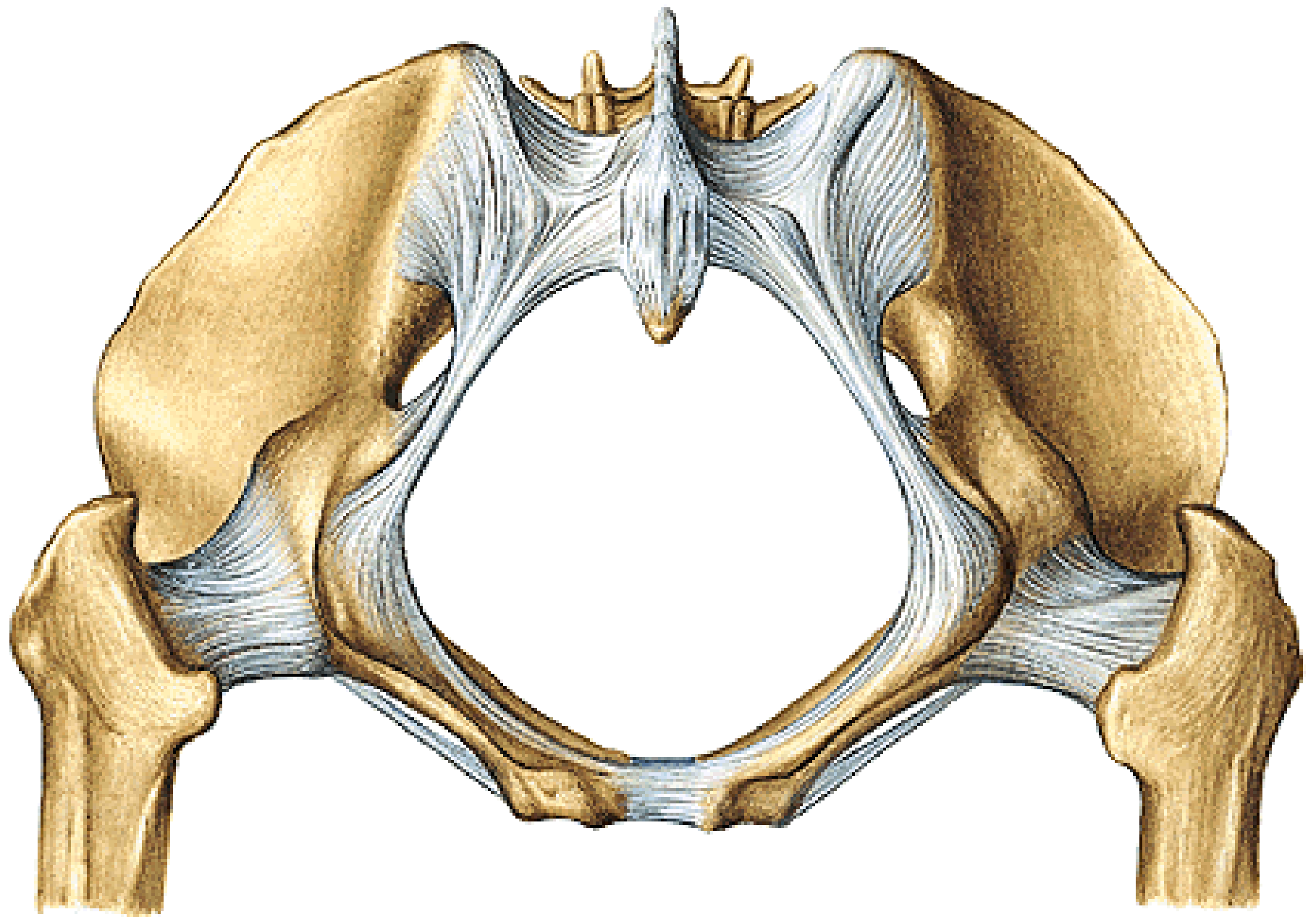
REGIONAL ANATOMY OF THE PELVIS



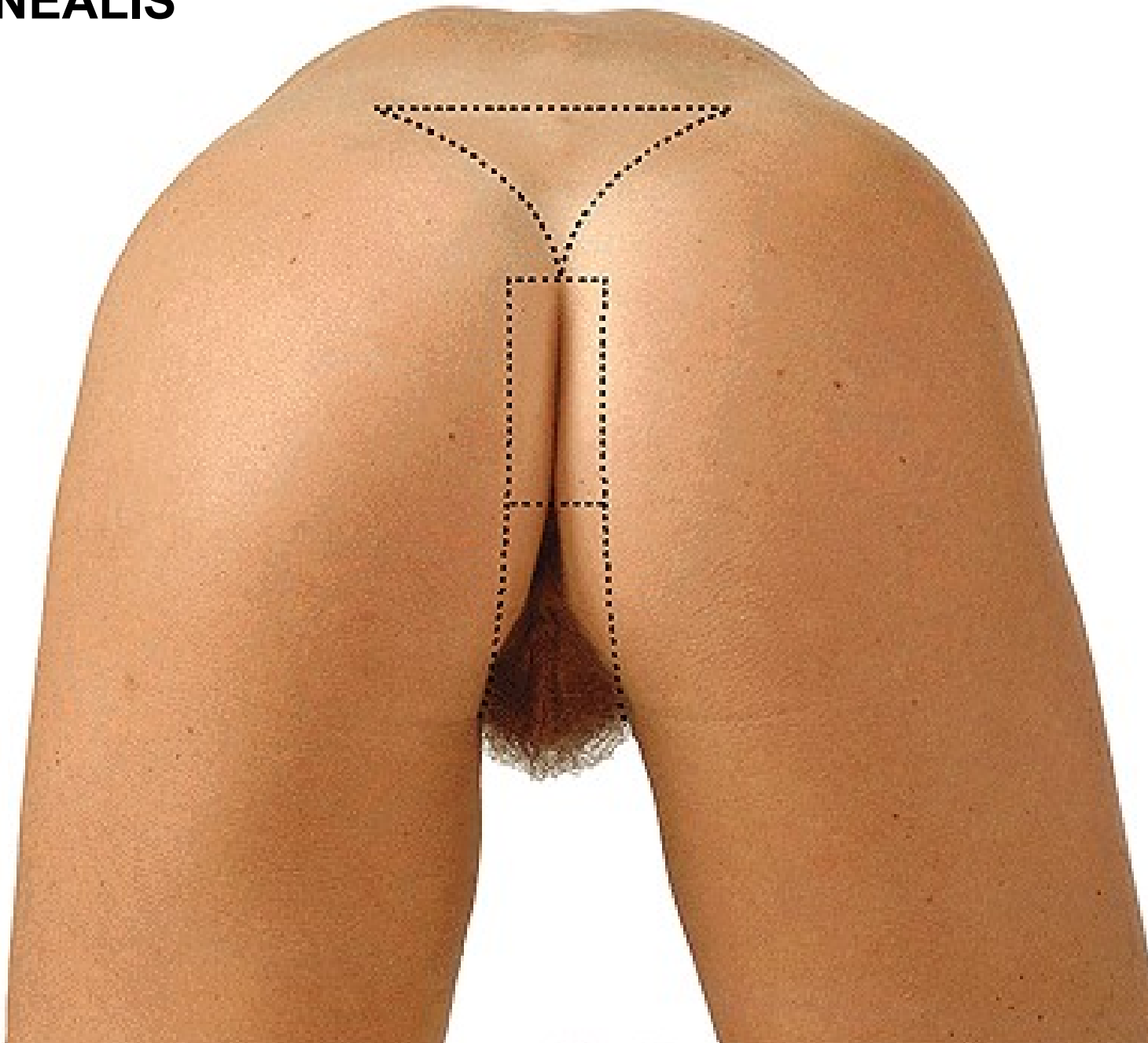








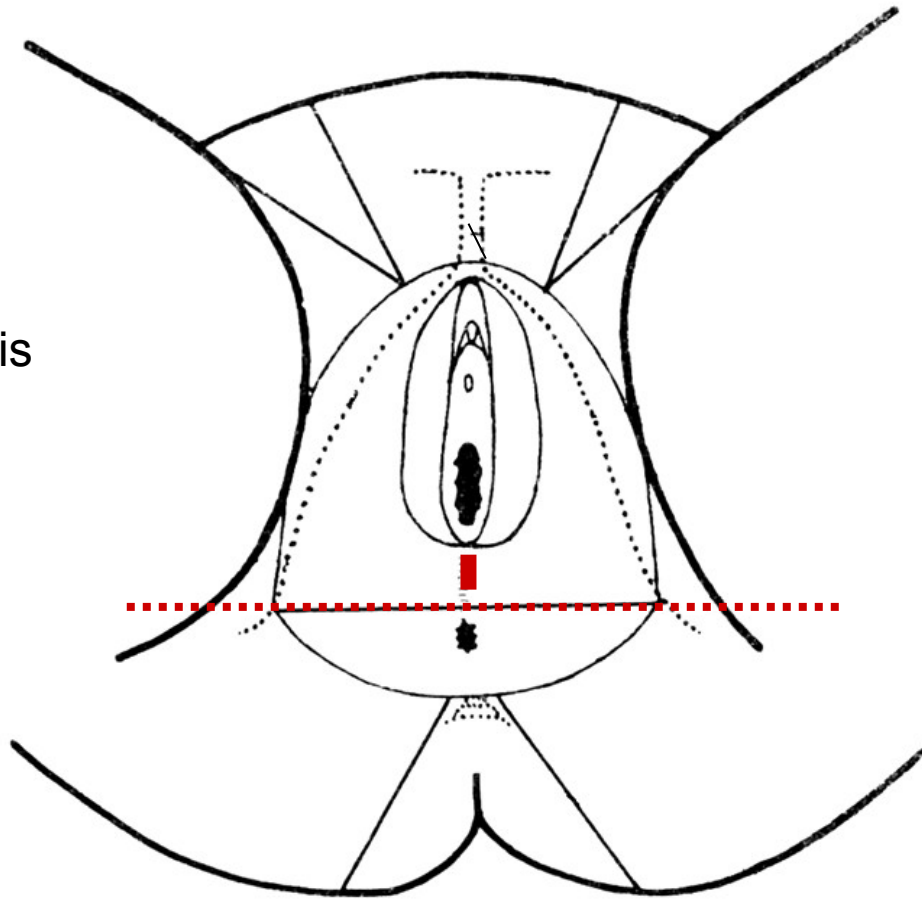
REGIO PERINEALIS



REGIO PERINEALIS

regio urogenitalis

regio analis



REGIO ANALIS

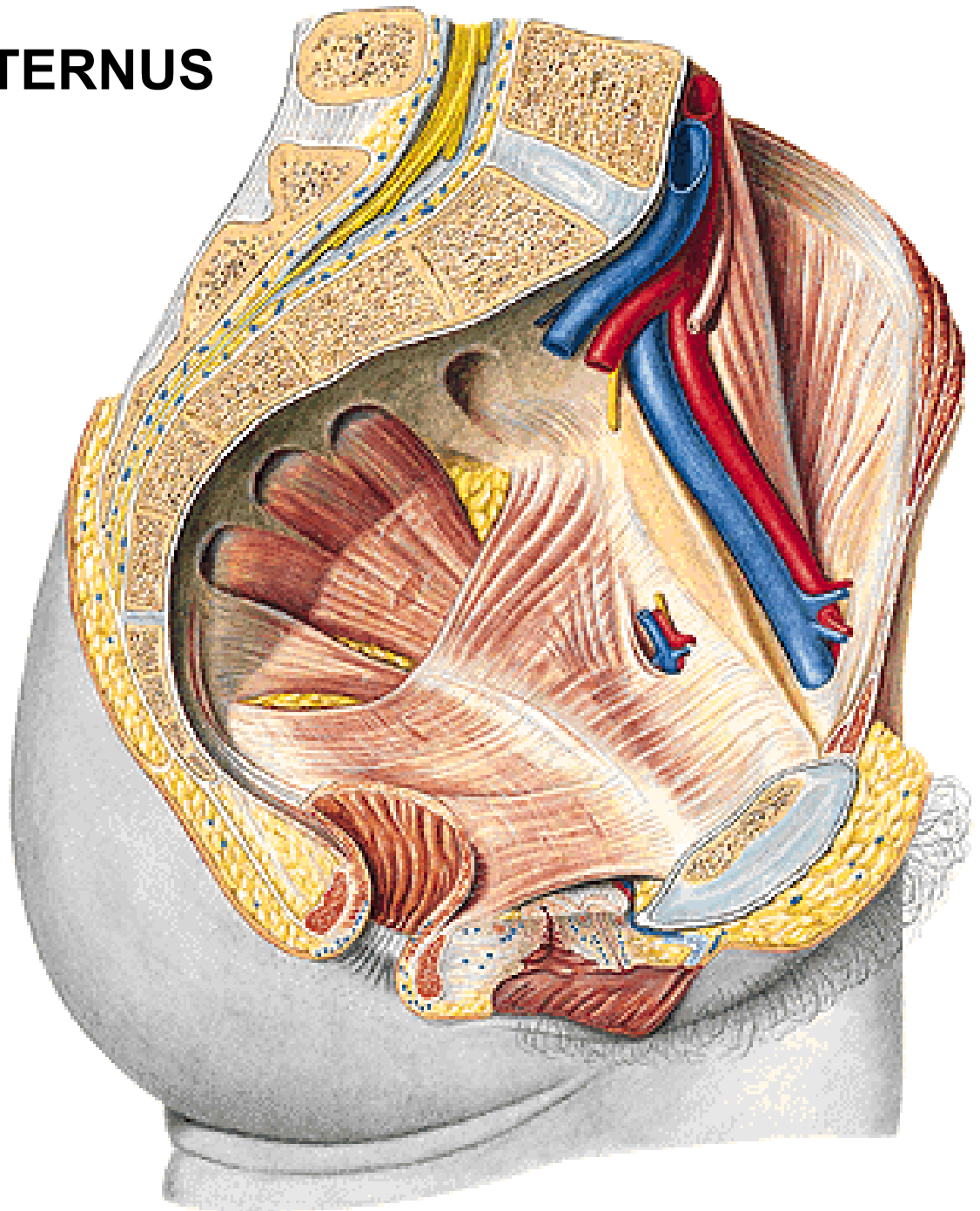
ANUS

RAPHE

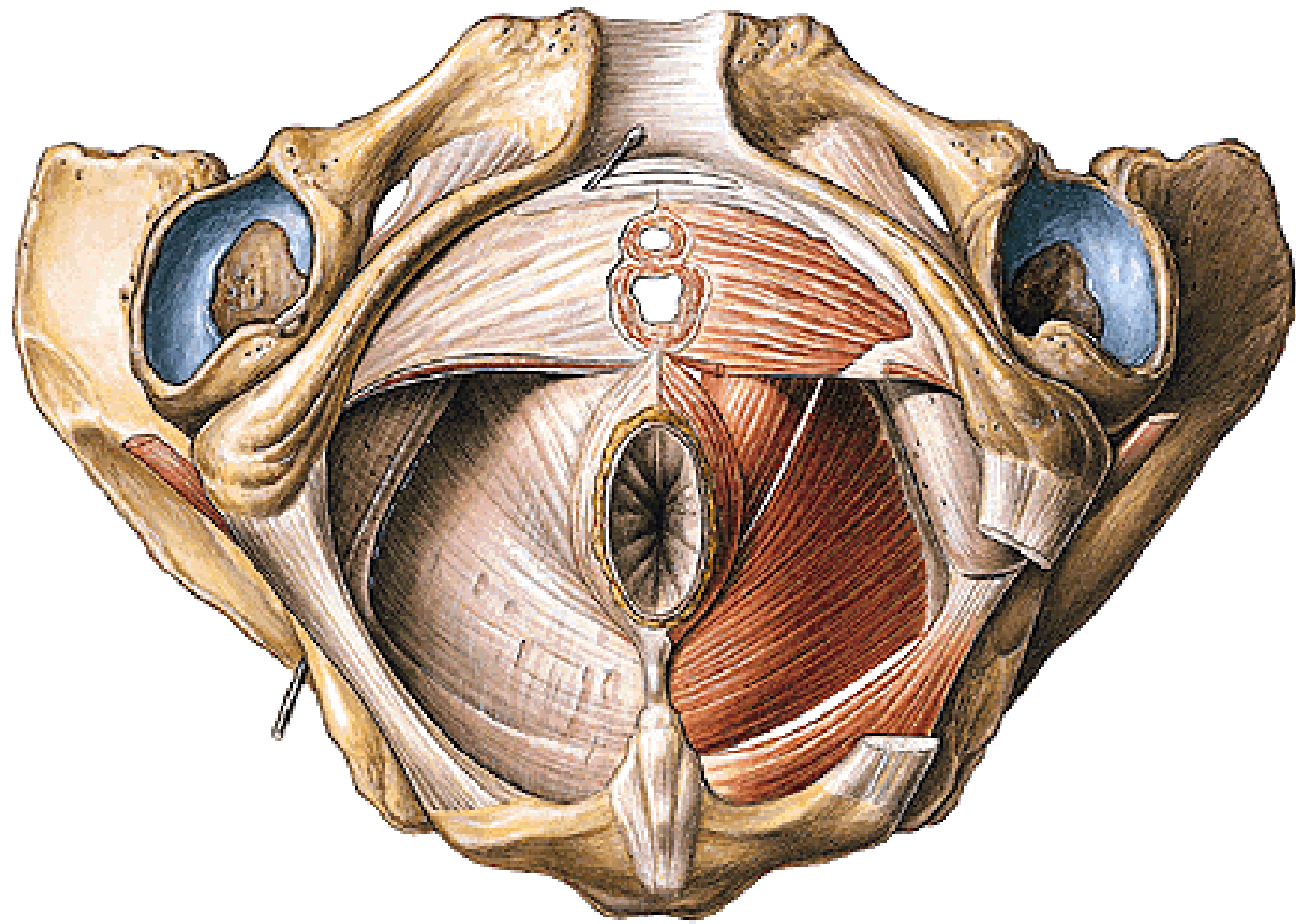
GLANDULAE CIRCUMANALES



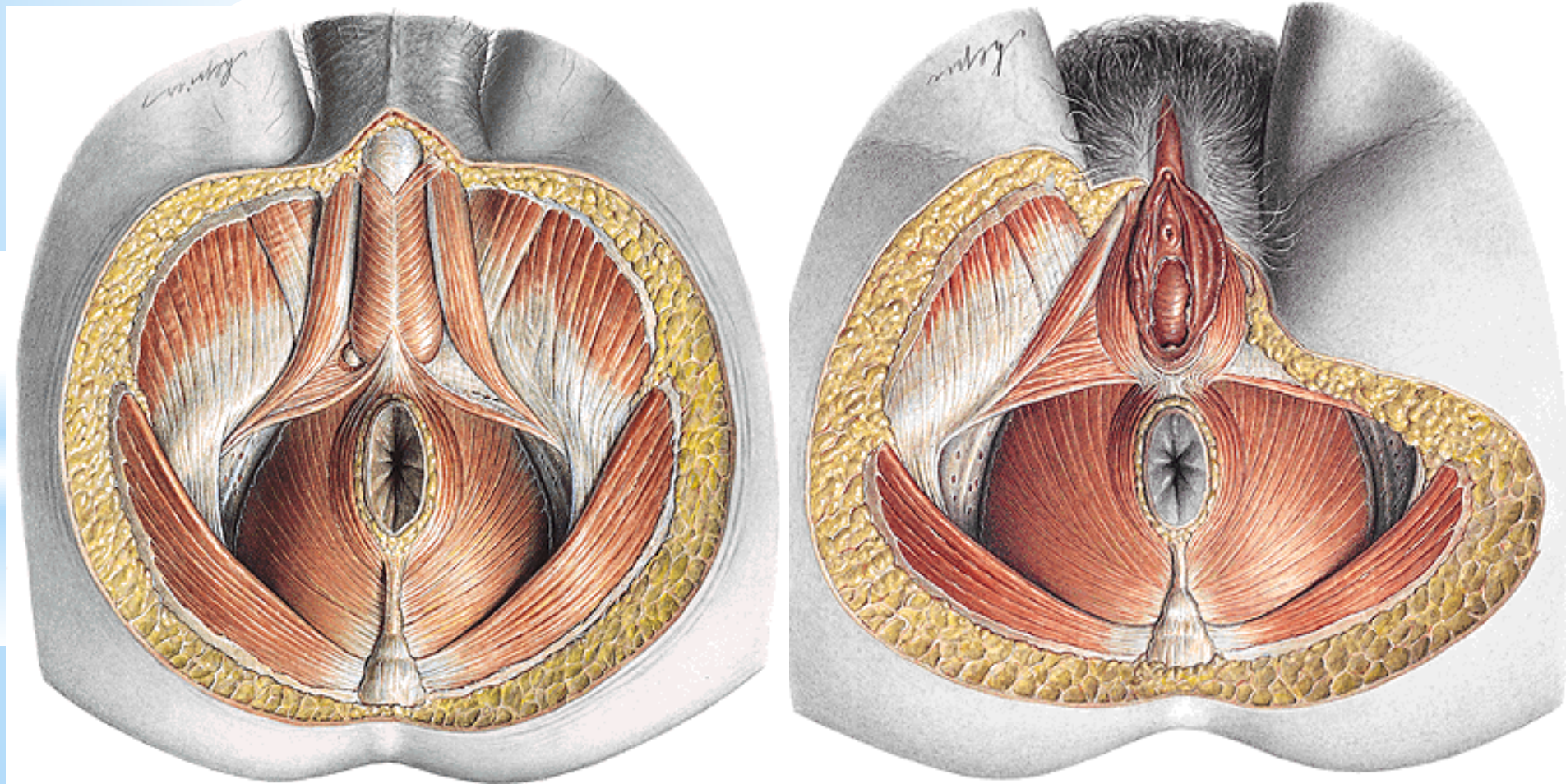
M. SPHINCTER ANI EXTERNUS



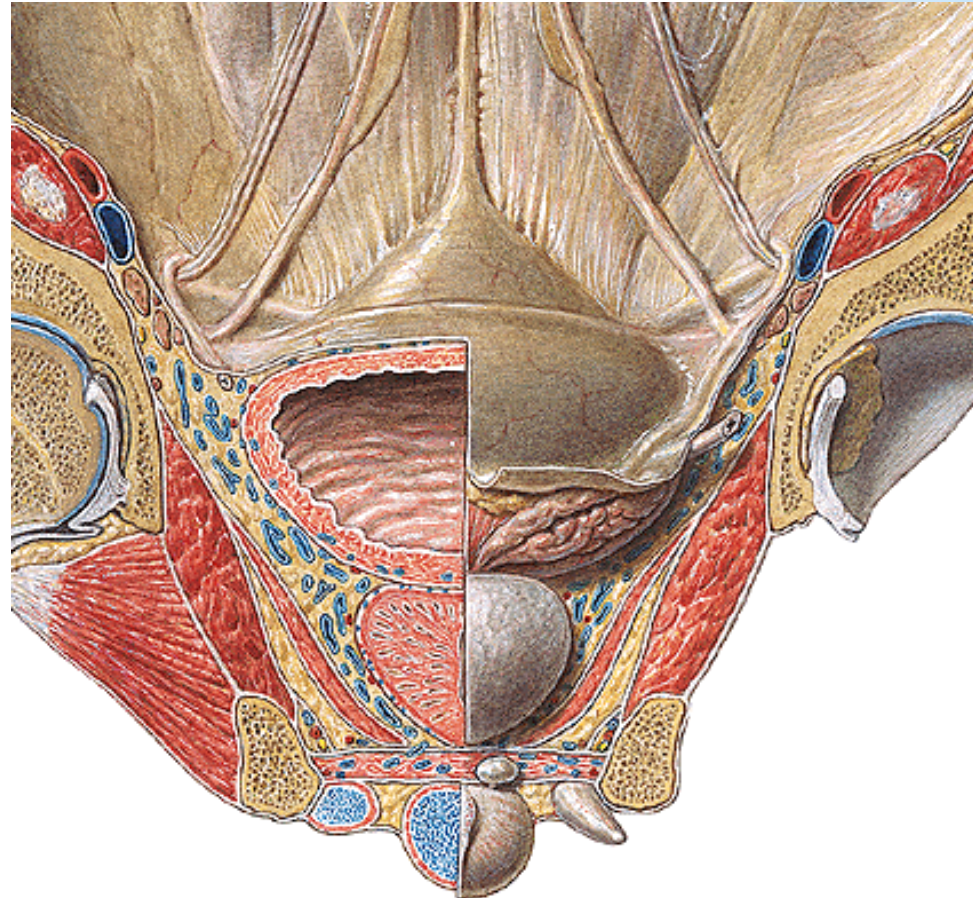
CENTRUM TENDINEUM LIGAMENTUM ANOCOCCYGEUM



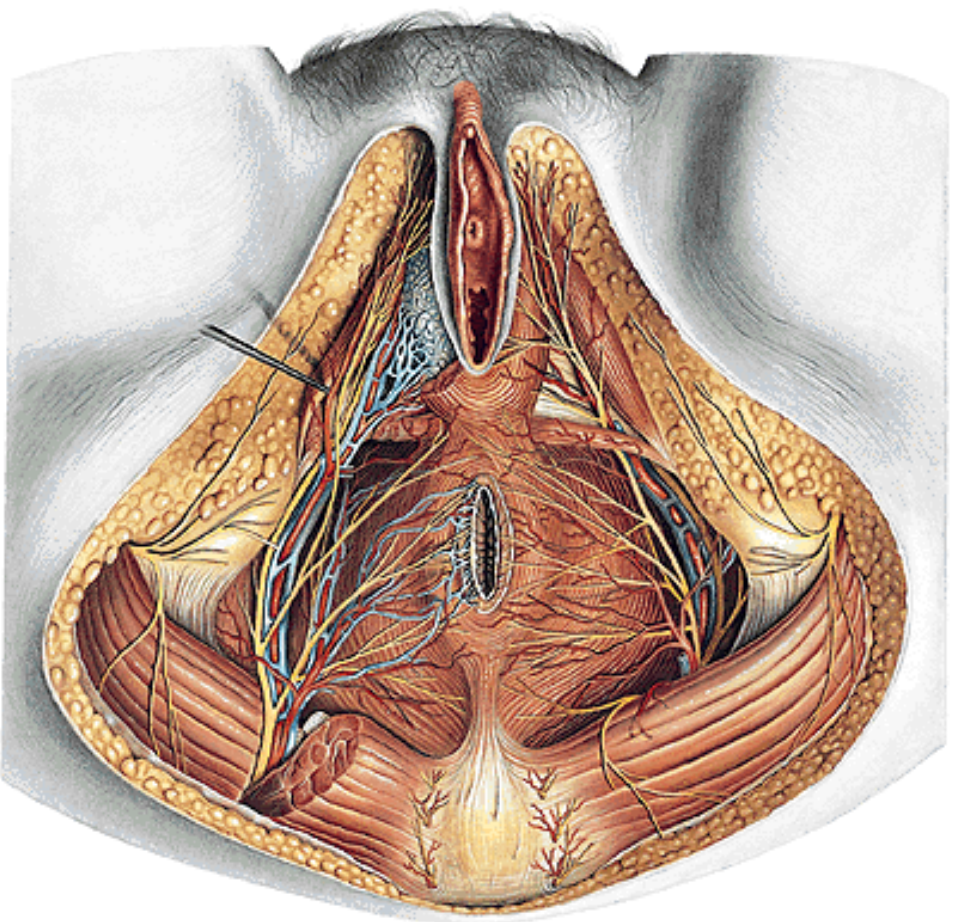
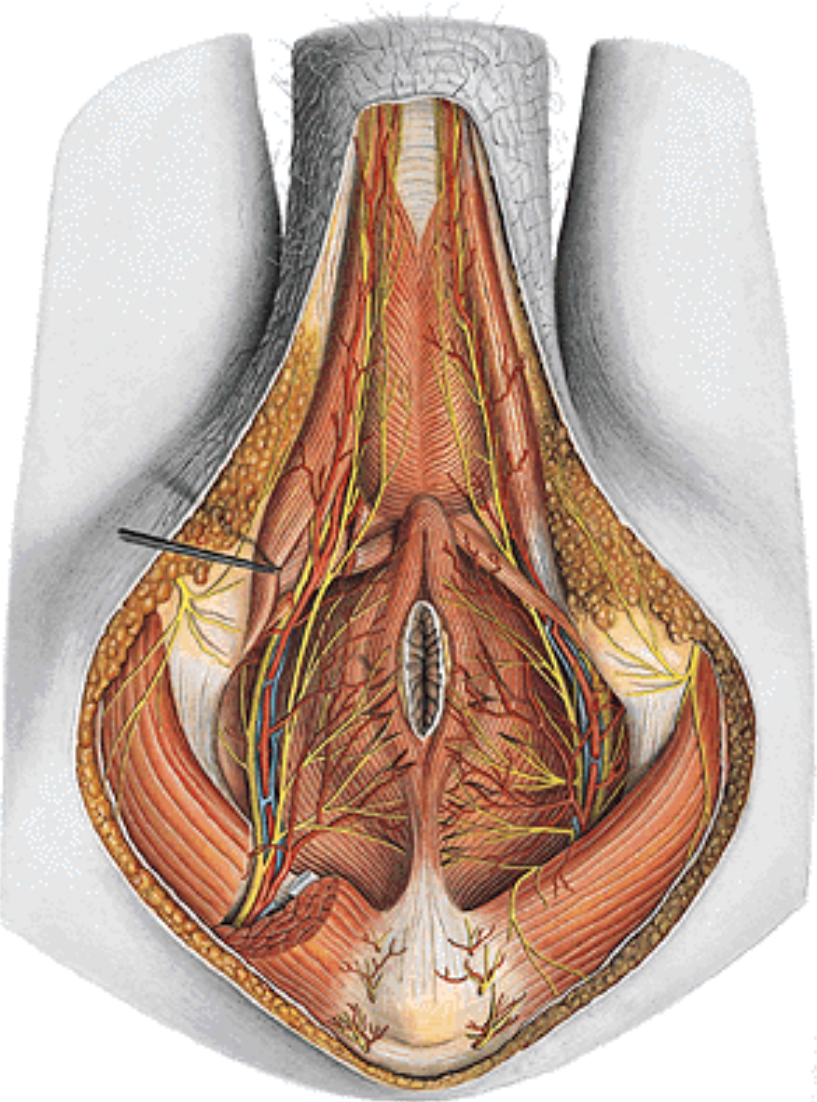
FOSSA ISCHIORECTALIS/ ISCHIOANALIS



RECESSUS PUBICUS FOSSAE ISCHIORECTALIS/-ANALIS



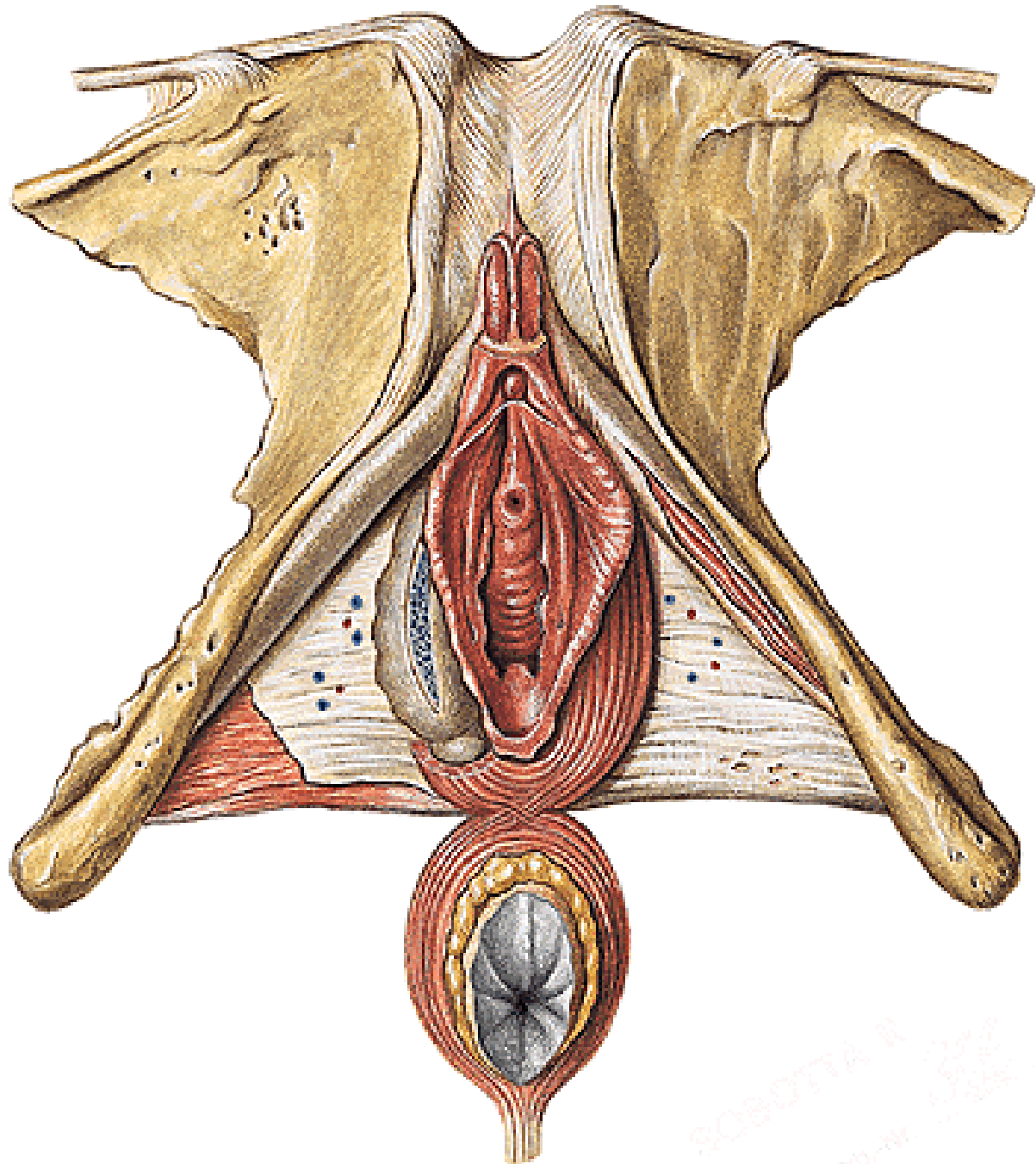
CANALIS PUDENDALIS (ALCOCK)



REGIO UROGENITALIS

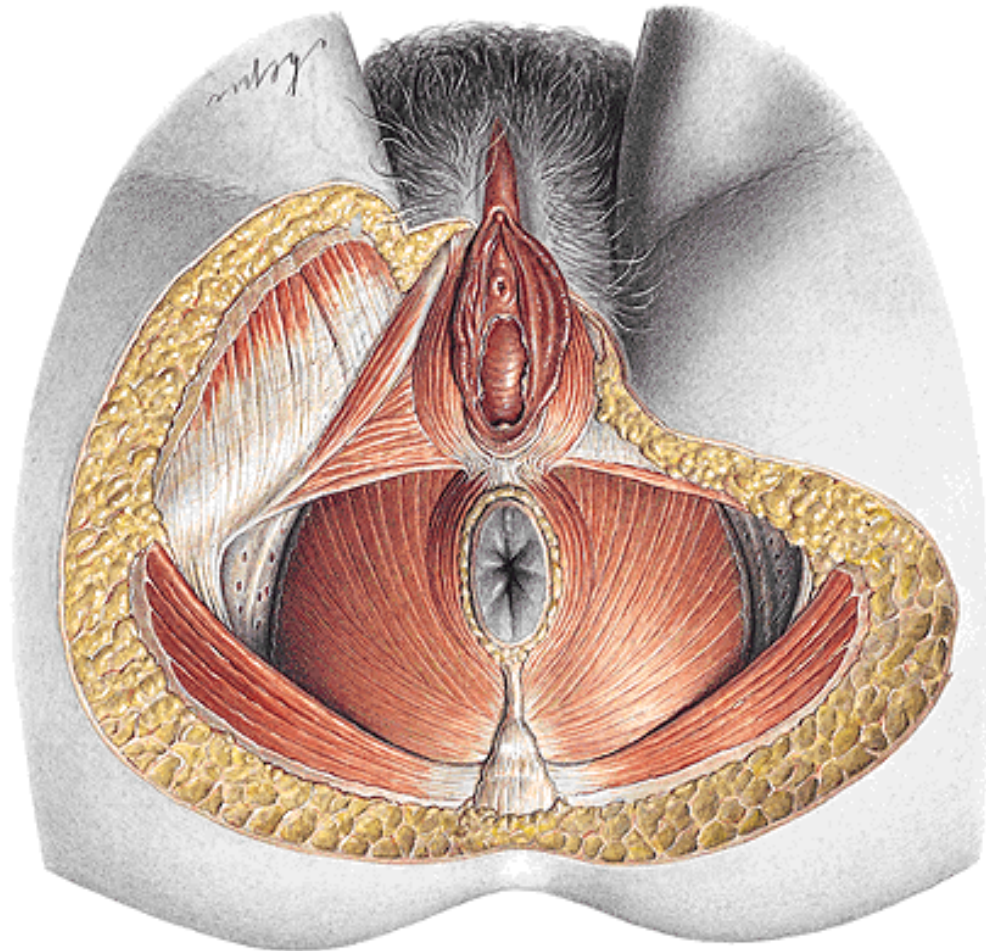
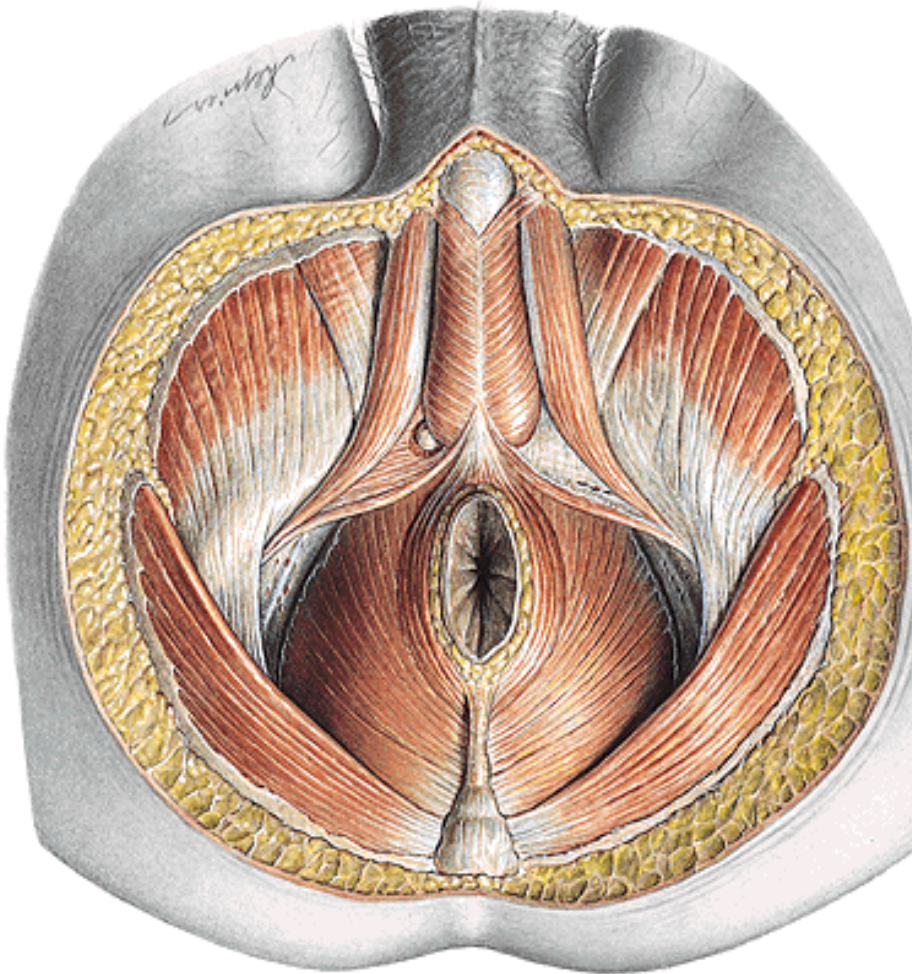




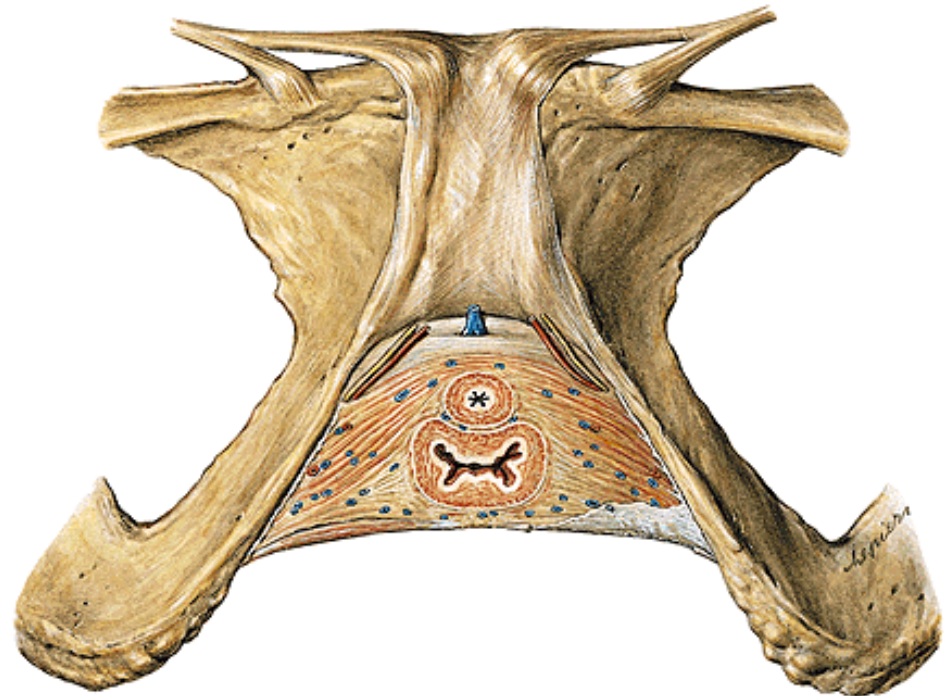
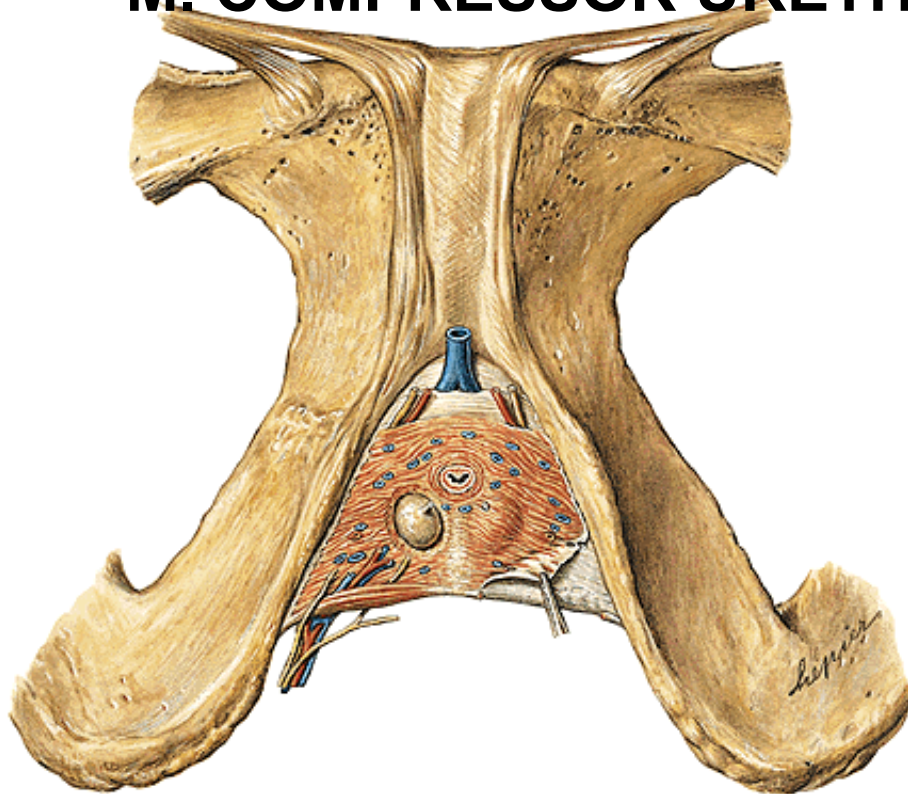


ROBOTA R
2011

FASCIA SUPERFICIALIS PERINEI
SPATIUM SUPERFICIALE PERINEI
M. ISCHIOCAVERNOSUS
M. BULBOSPONGIOSUS
RIMA PUDENDI



**SACCUS PROFUNDUS PERINEI / DIAPHRAGMA
UROGENITALE
MEMBRANA PERINEALIS
M. TRANSVERSUS PERINEI PROF.
LIG. TRANSVERSUM PERINEI
M. SPHINCTER URETHRAE EXTERNUS
M. URETHROVAGINALIS
M. COMPRESSOR URETHRAE**



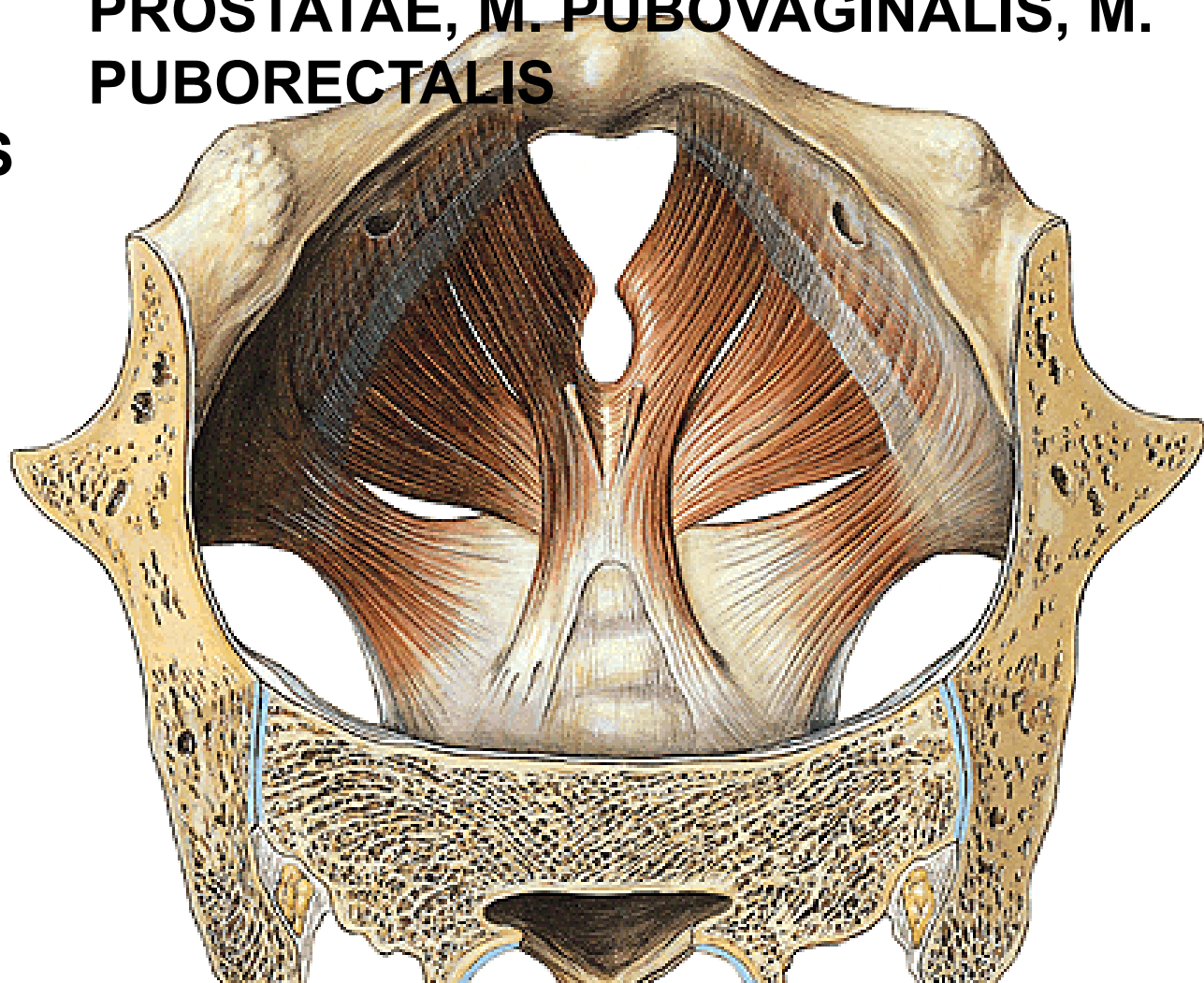


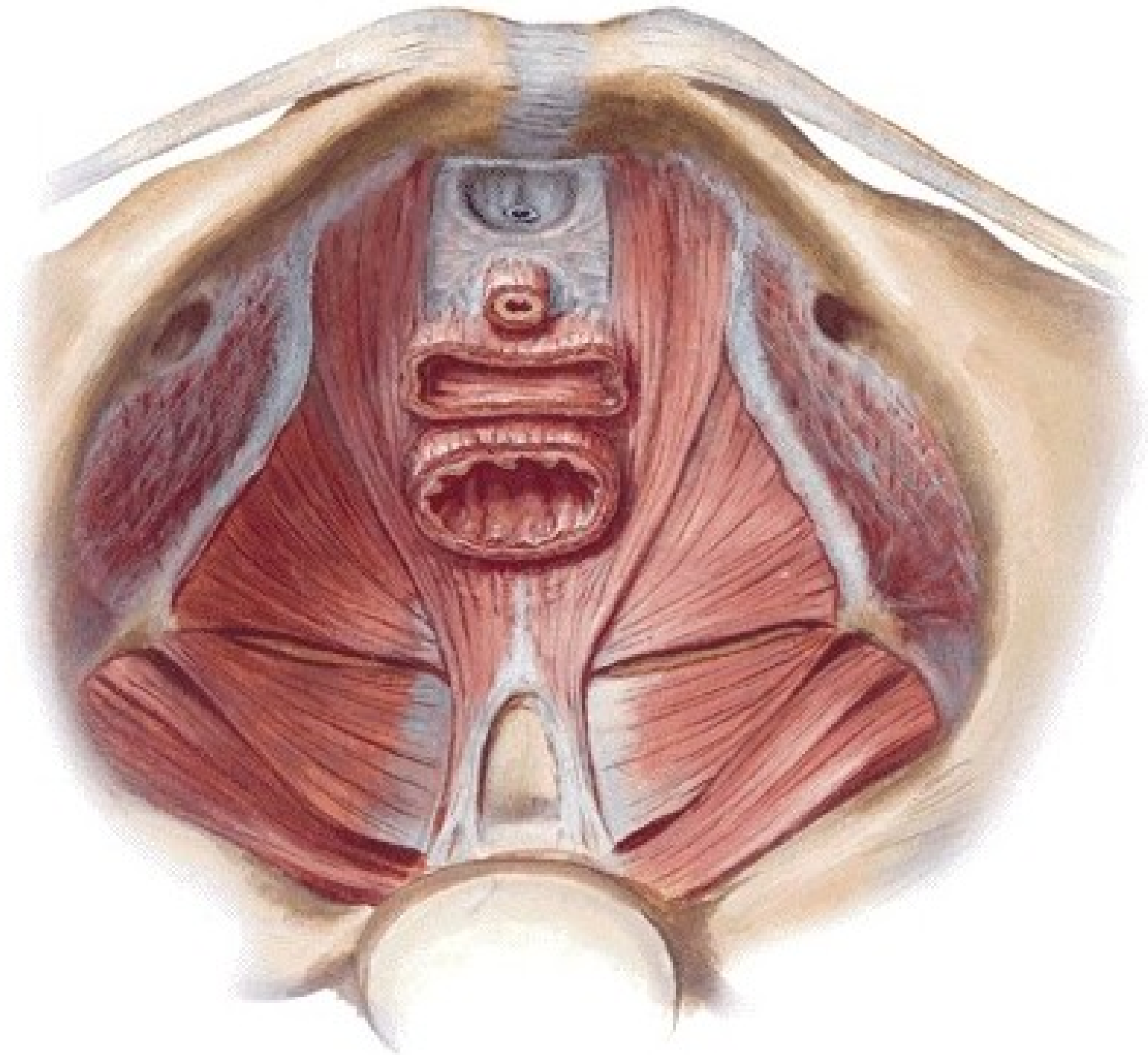
DIAPHRAGMA PELVIS

- M. LEVATOR ANI – M. ILIOCOCYGEUS
 - M. PUBOCOCYGEUS (M.LEVATOR PROSTATAE, M. PUBOVAGINALIS, M. PUBORECTALIS)
- M. COCCYGEUS

Arcus tendineus
m. levatoris ani

Hiatus
urogenitalis





FASCIA DIAPHRAGMATICIS PELVIS INF.



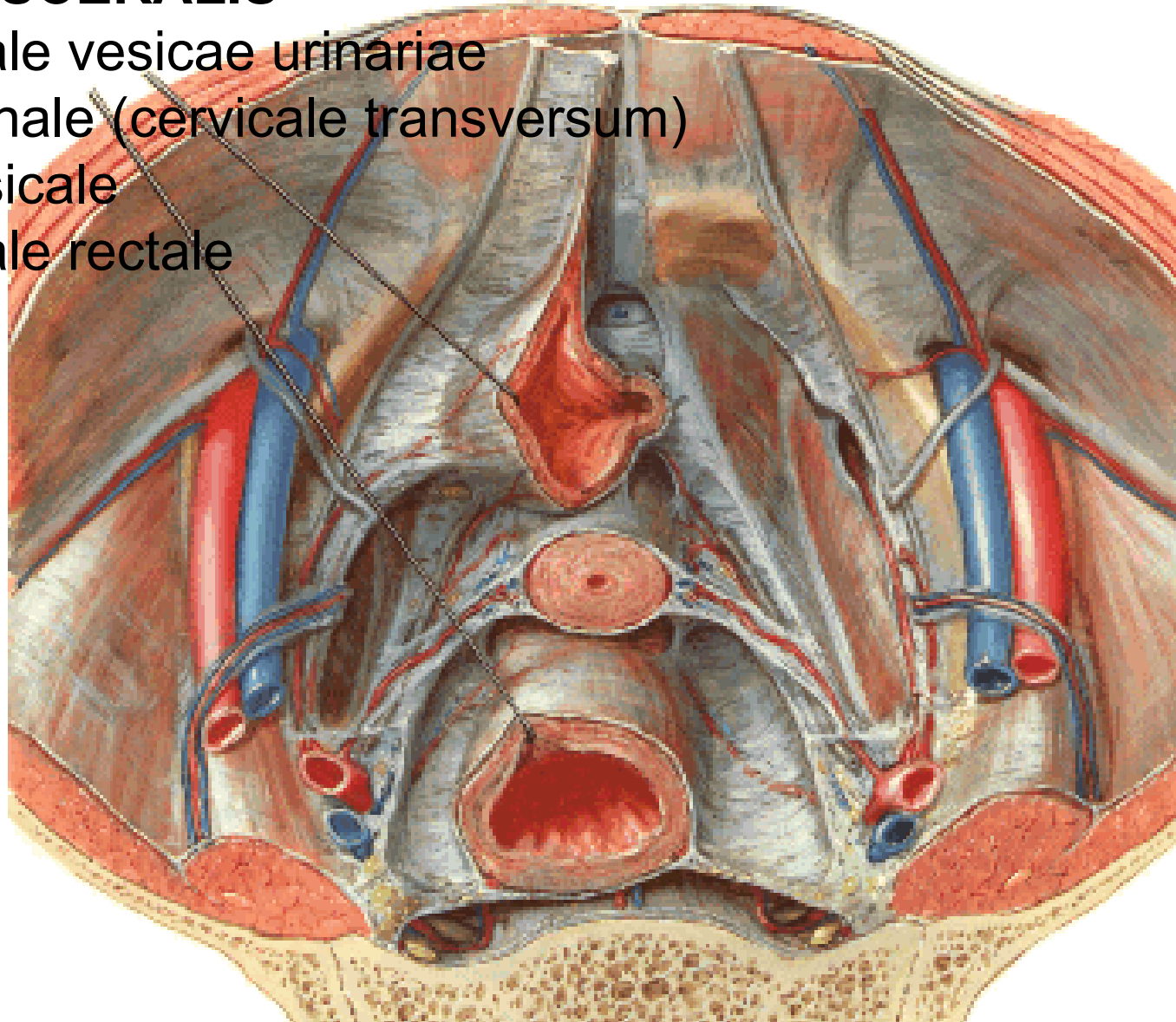
Arcus tendineus fasciae pelvis

PELVIC FASCIA

FASCIA PELVIS PARIETALIS

FASCIA PELVIS VISCERALIS

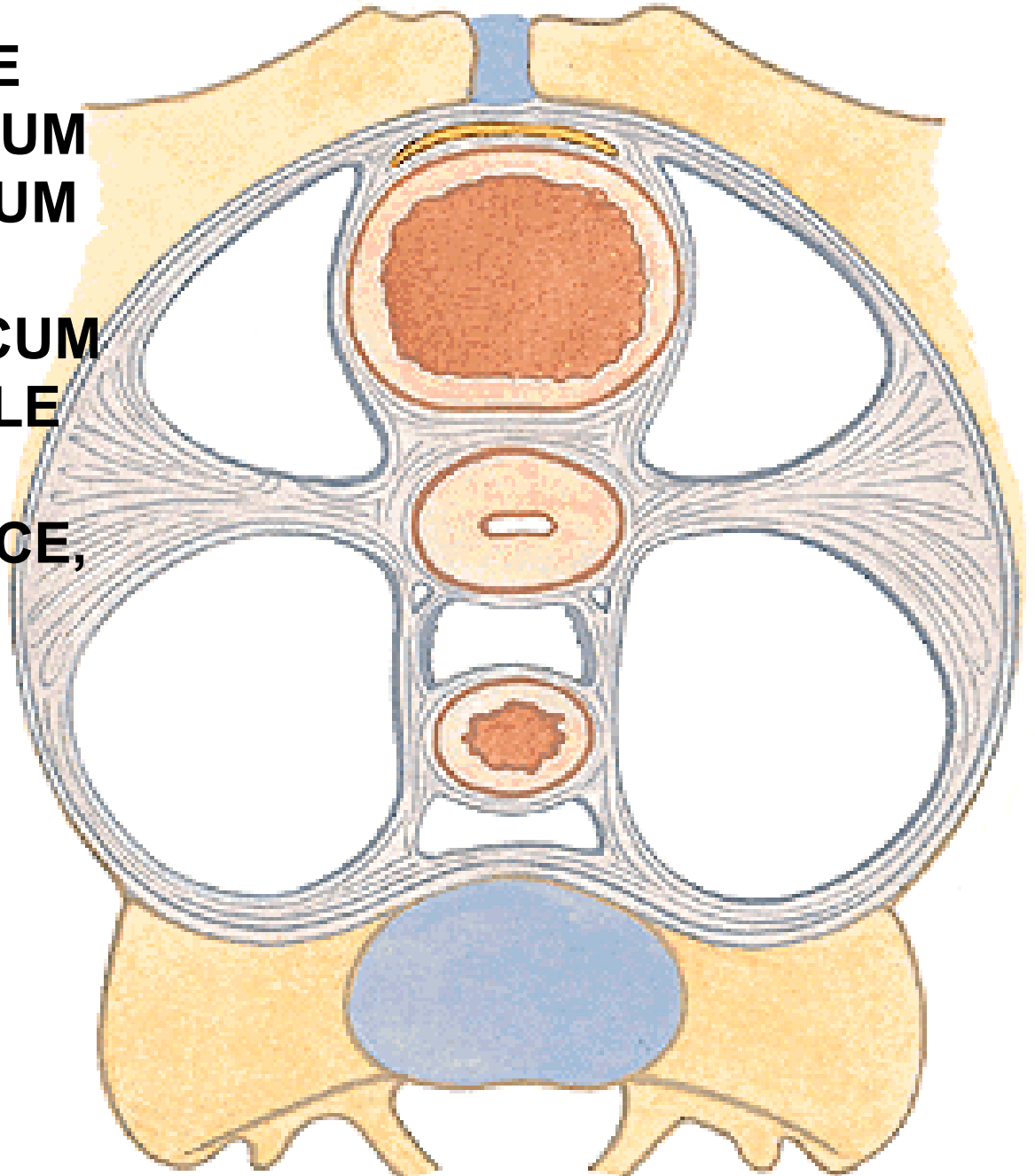
- ligamentum laterale vesicae urinariae
- ligamentum cardinale (cervicale transversum)
/ septum rectovesicale
- ligamentum laterale rectale



**LIG. PUBOVESICALE
LIG. VESICOUTERINUM
LIG. SACROUTERINUM**

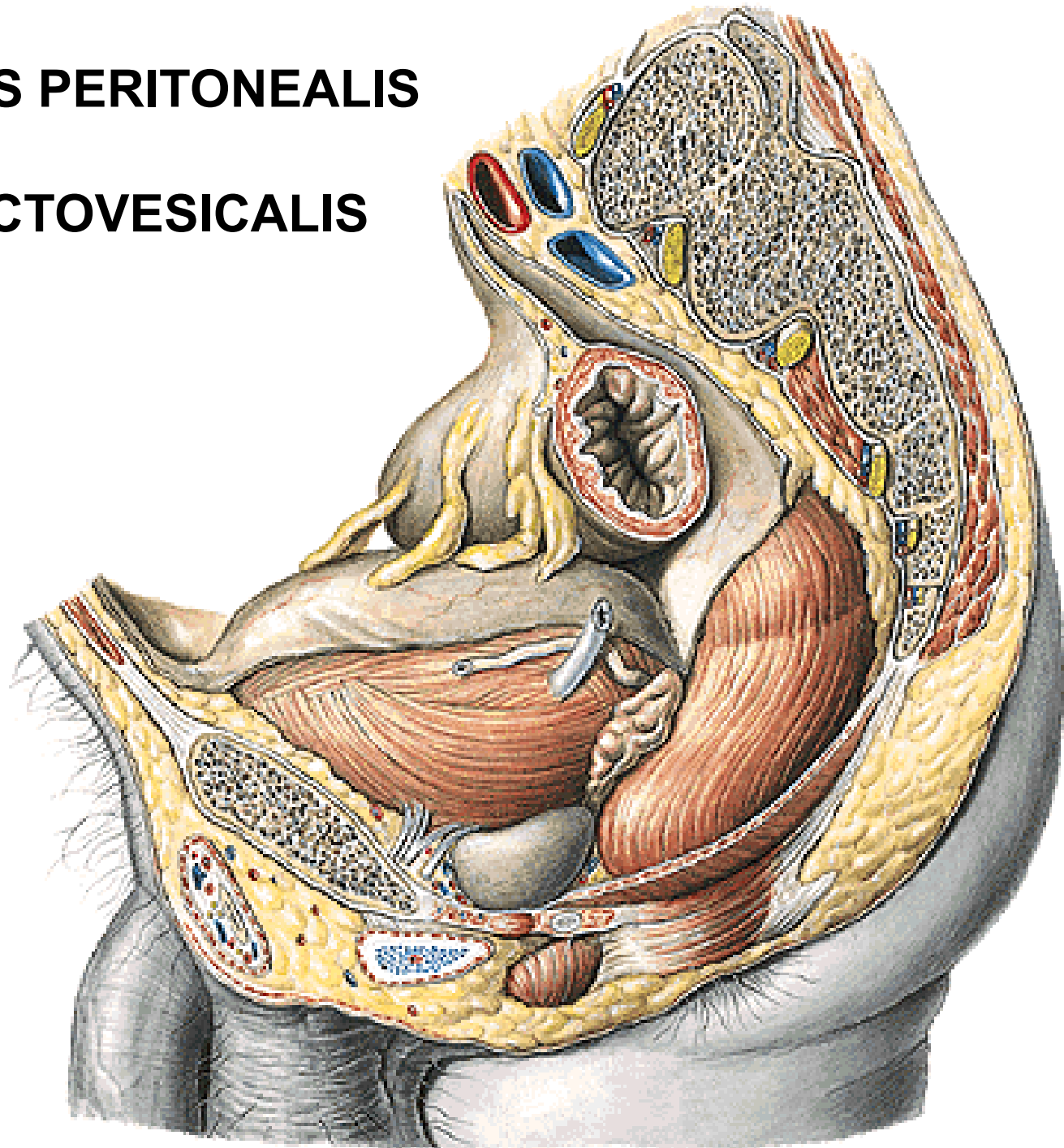
**LIG. PUBOPRSTATICUM
LIG. SACROGENITALE**

**(PARAVESICAL SPACE,
PARAMETRIUM,
PARACOLPIUM,
PARAPROCTIUM)**

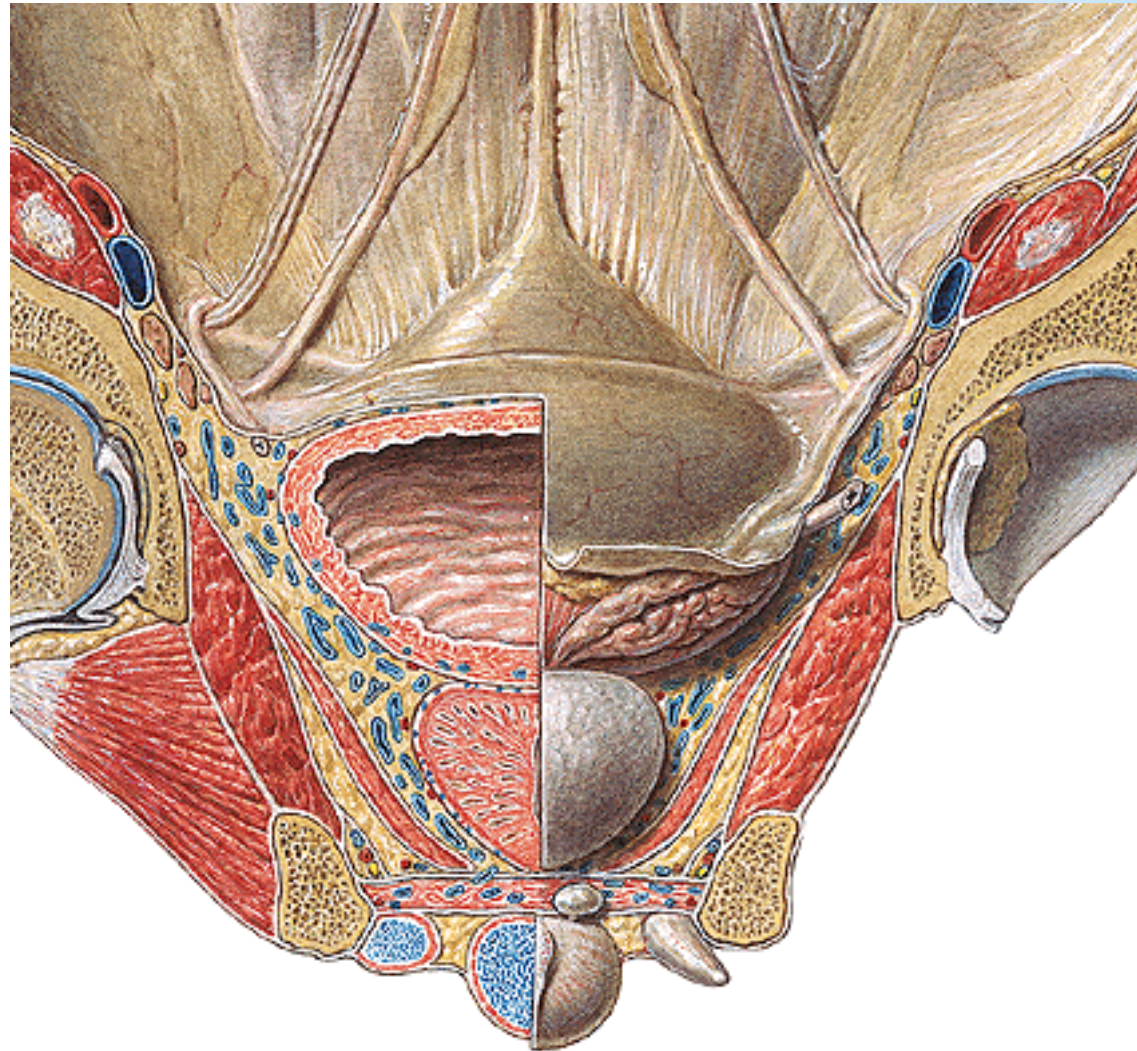


CAVITAS PELVIS PERITONEALIS

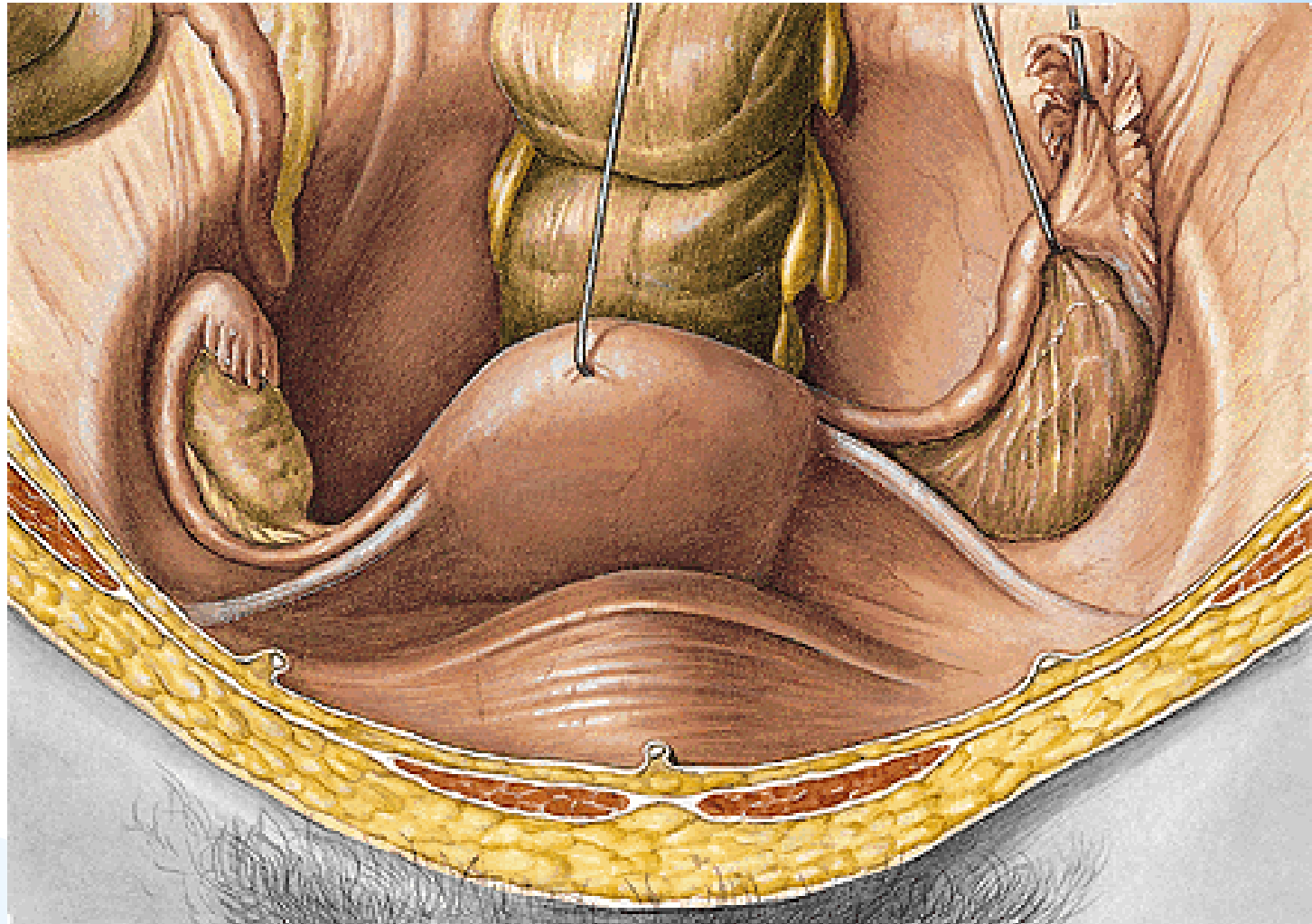
EXCAVATIO RECTOVESICALIS



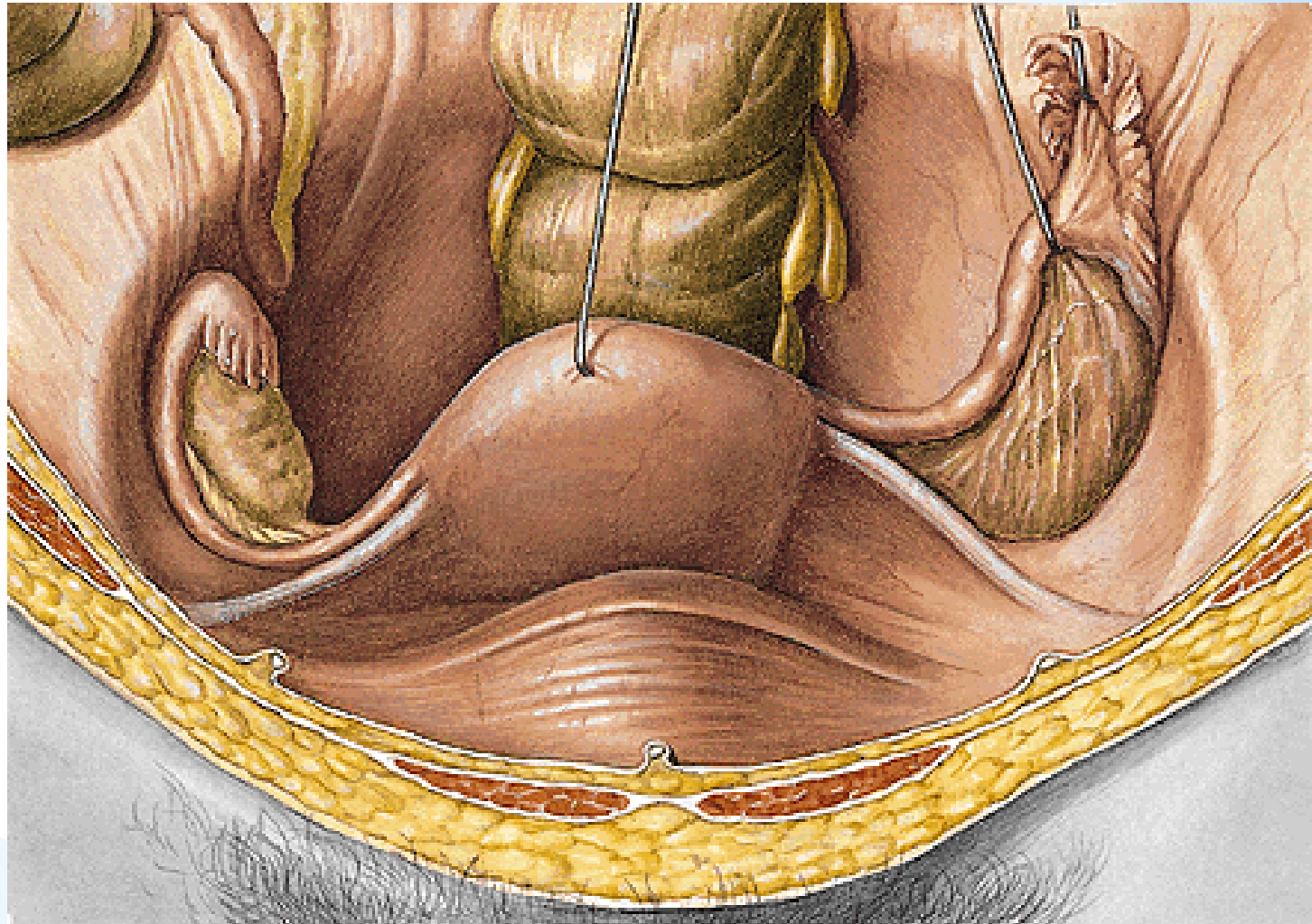
PLICA VESICALIS TRANSVERSA
PLICA DUCTUS DEFERENTIS
PLICA URETERICA



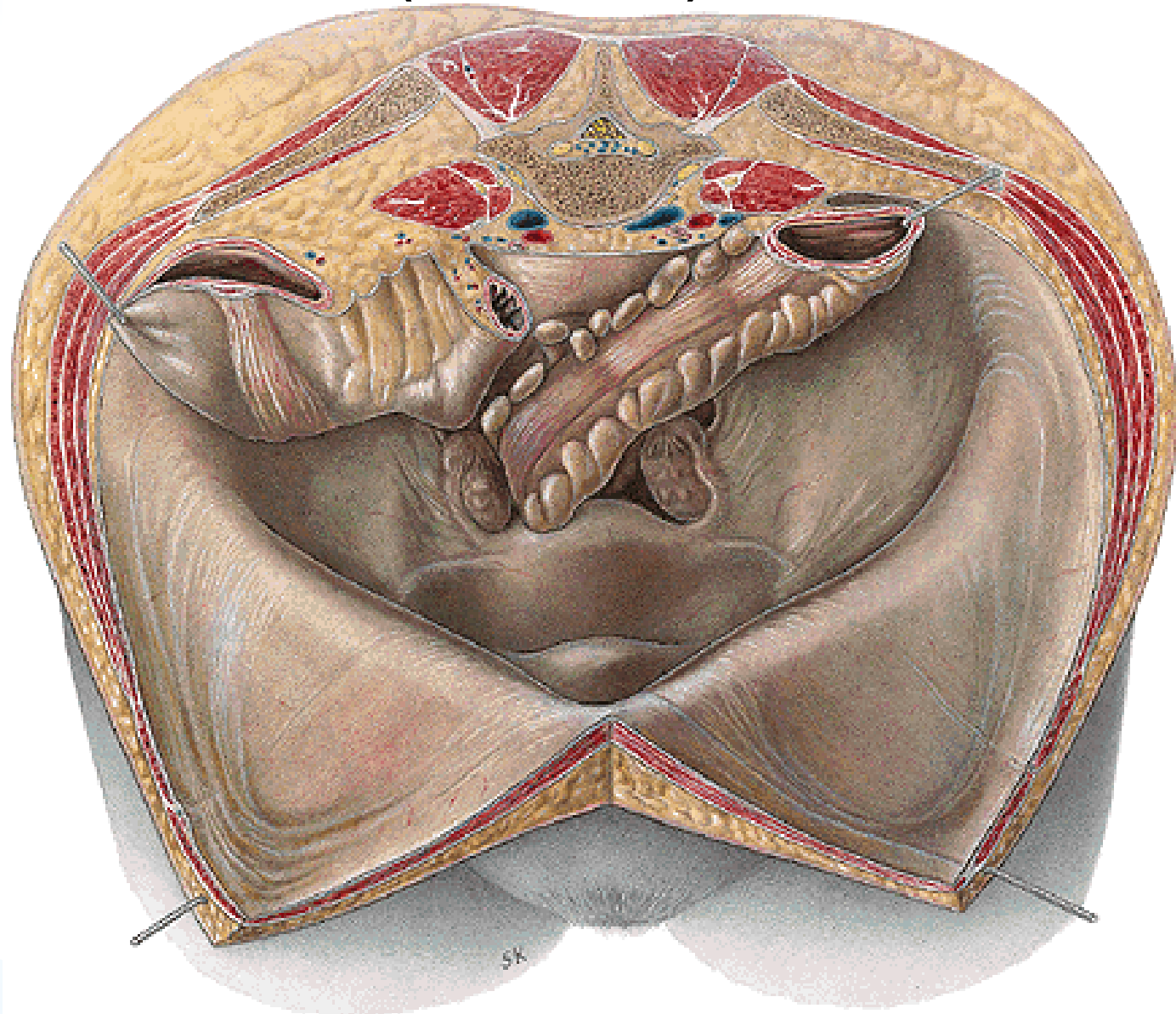
LIGAMENTUM LATUM UTERI
LIGAMENTUM OVARIUM PROPRIUM
LIGAMENTUM SUSPENSORIUM OVARIUM
LIGAMENTUM TERES UTERI



FOSSA OVARICA
FOSSA CLAUDII
LIGAMENTUM APPENDICULO-OVARICUM

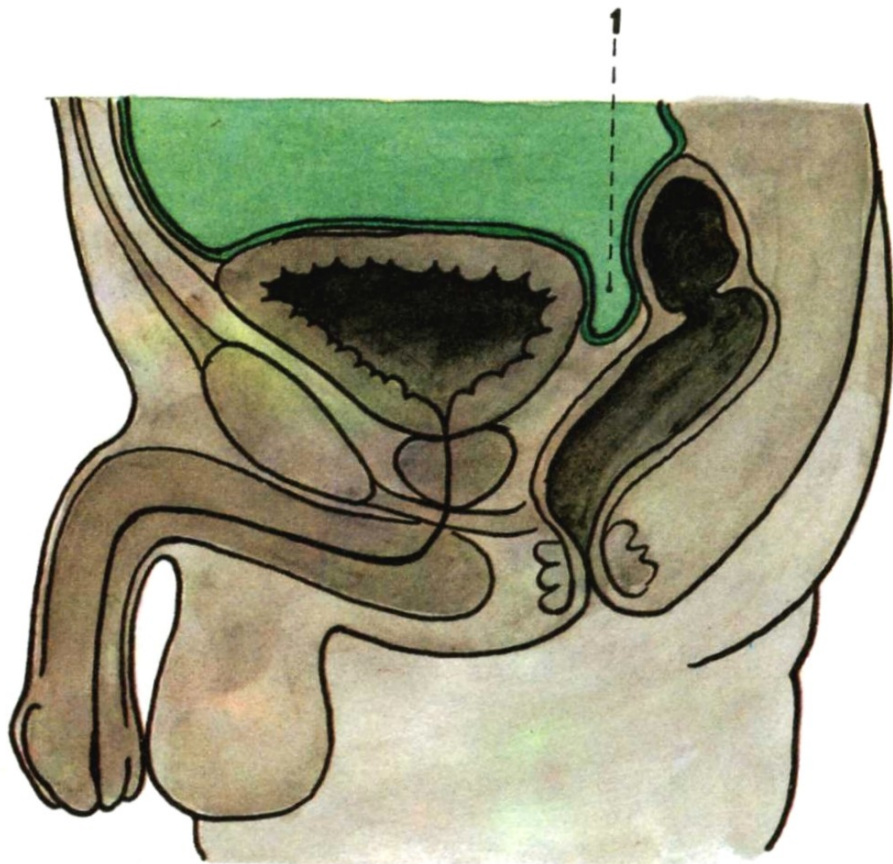


EXCAVATIO VESICOUTERINA EXCAVATIO RECTOUTERINA (DOUGLAS)



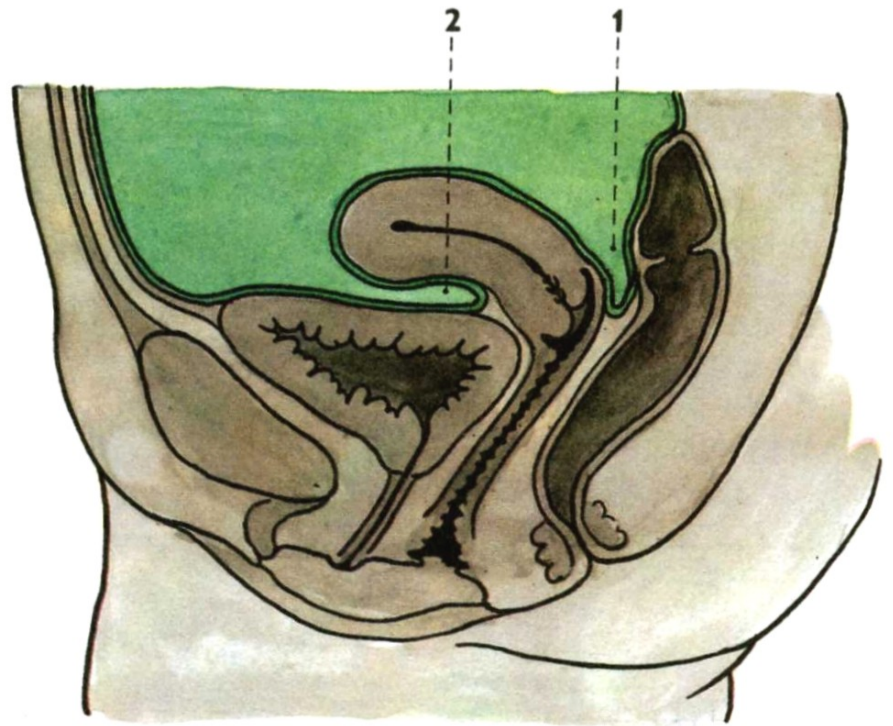
Median section through the male pelvis

1. excavatio rectovesicalis

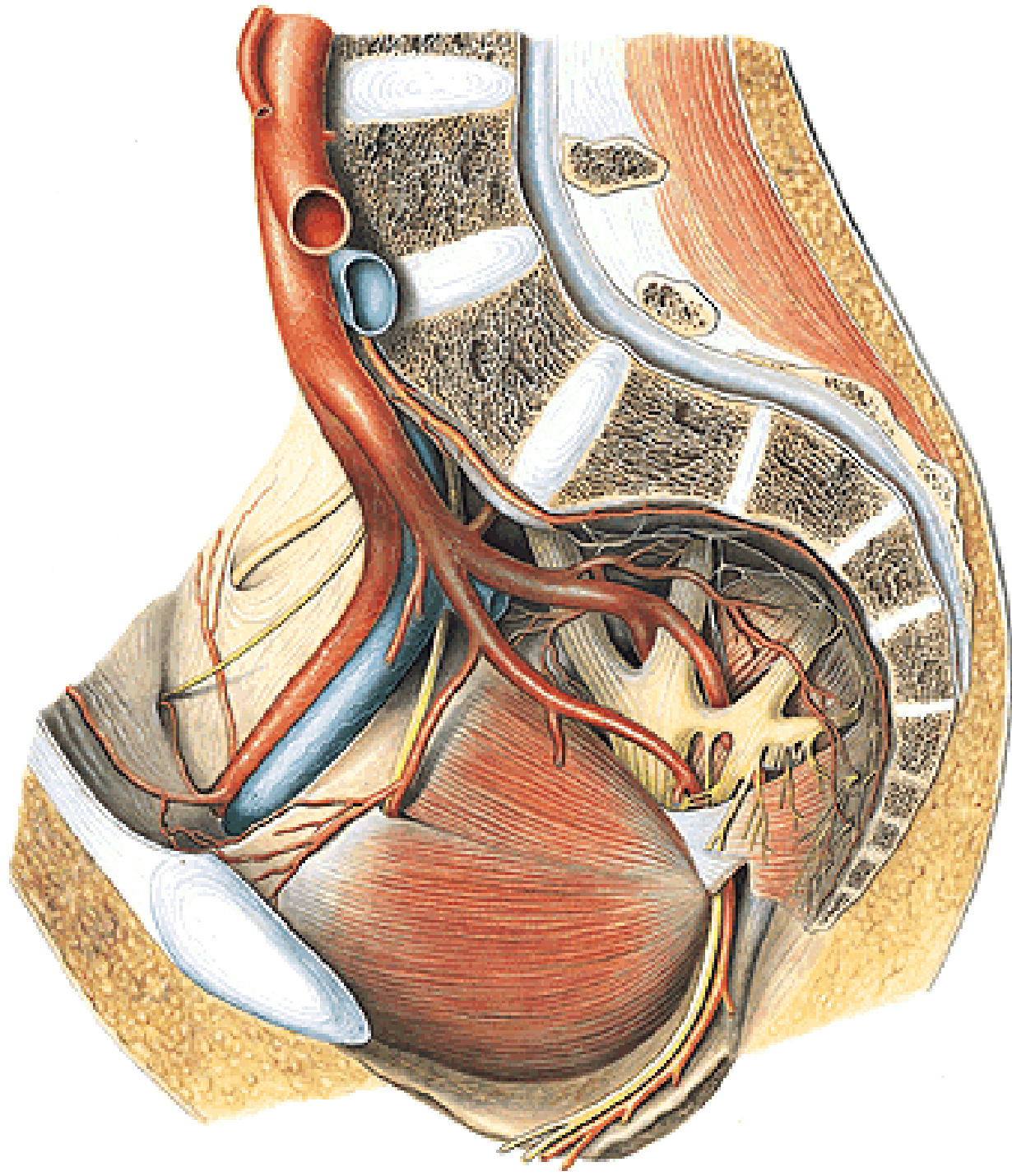


Median section through the female pelvis

1. excavatio rectouterina (Douglas)
2. excavatio vesicouterina

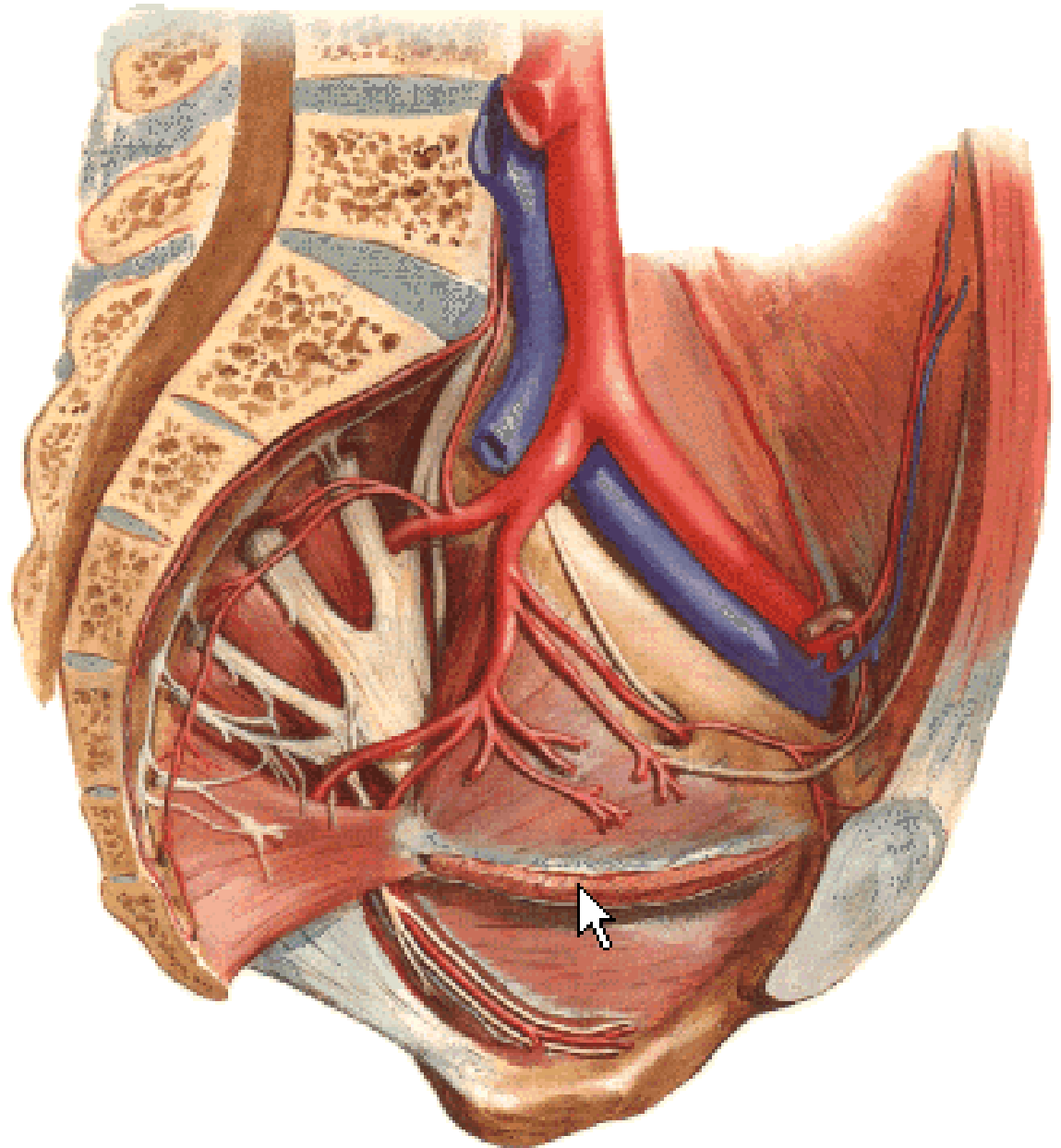


A. ILIACA COMM.
- A. ILIACA EXT.
- A. ILIACA INT.



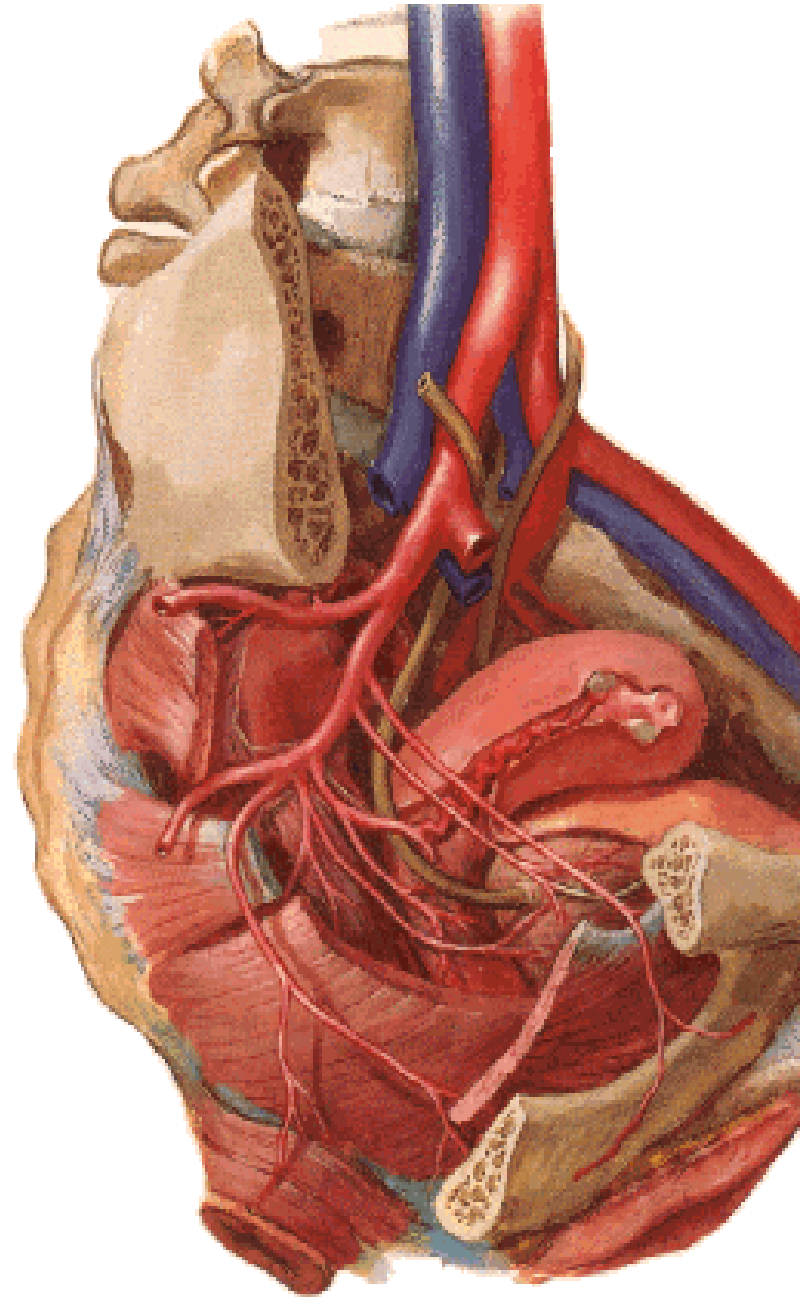
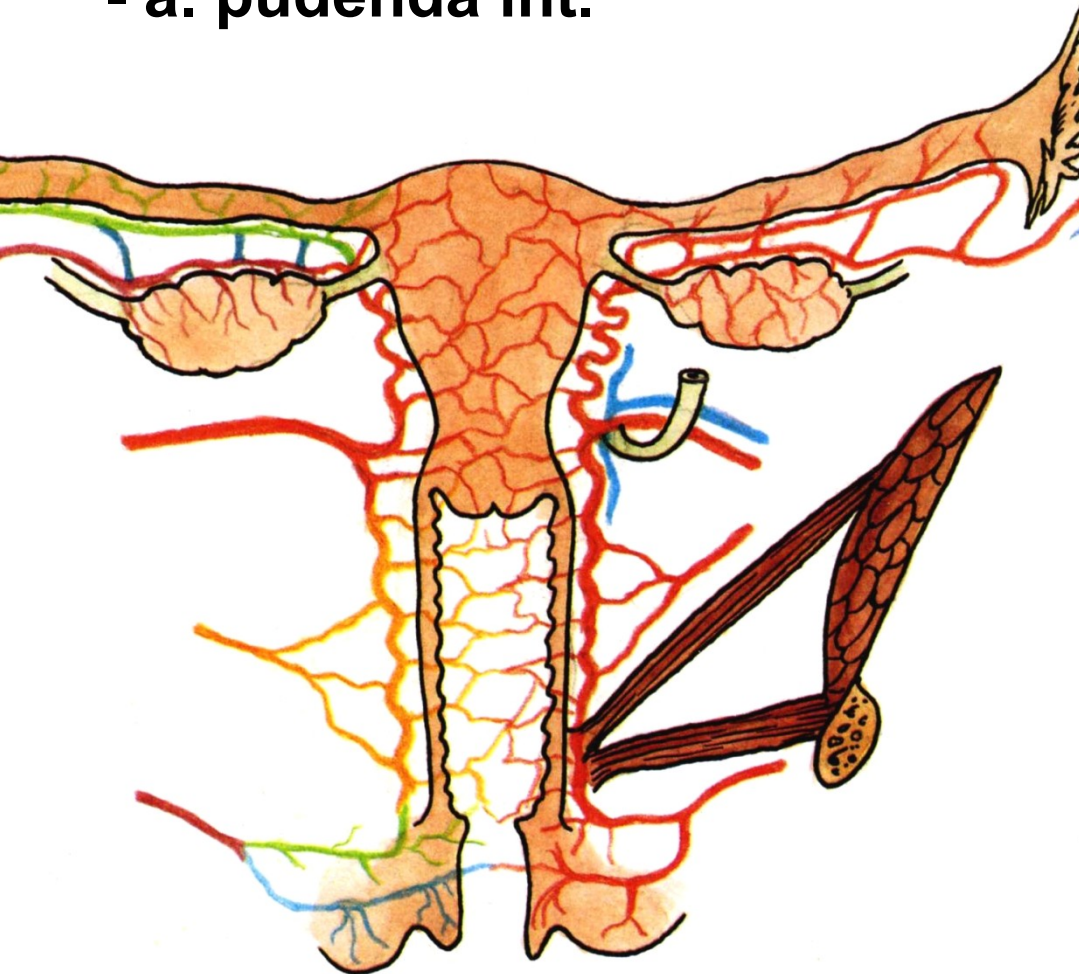
A. ILIACA INT.

- a. iliolumbalis
- aa. sacrales lat.
- a. obturatoria
- a. glutea sup.
- a. glutea inf.
- a. umbilicalis

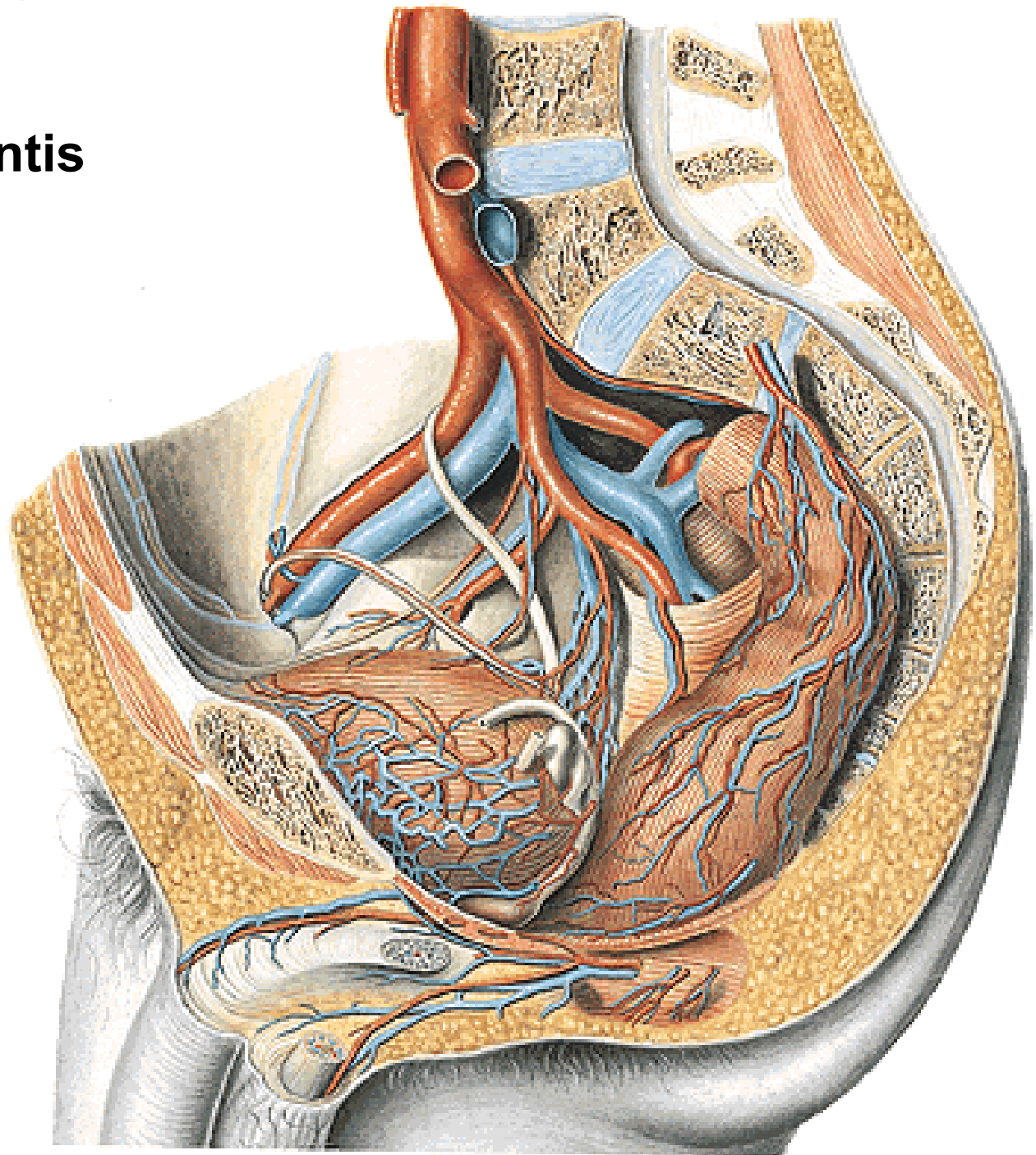


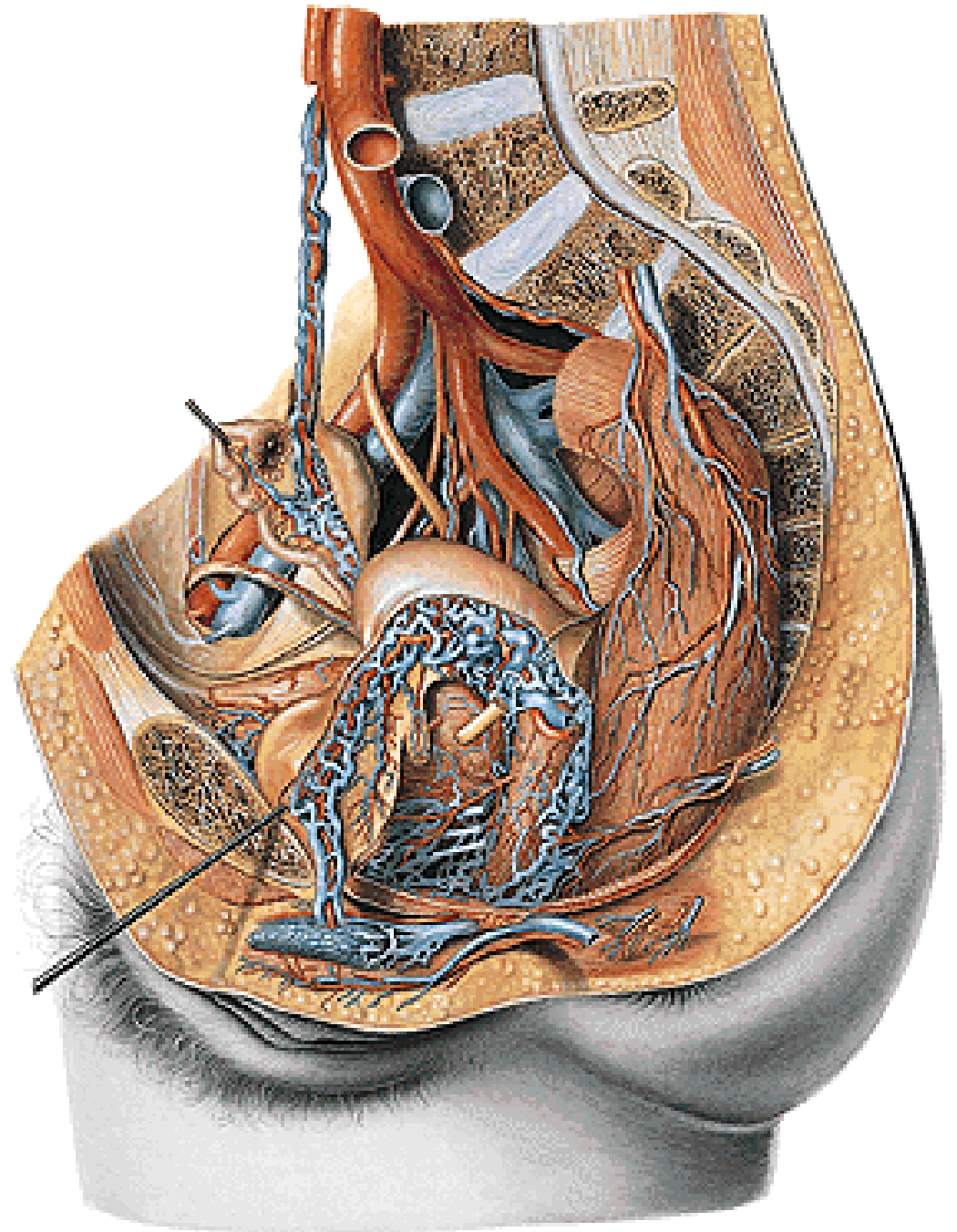
A. iliaca int.

- a. uterina
- a. vaginalis
- a. vesicalis inf.
- a. rectalis media
- a. pudenda int.



A. ductus deferentis
Rr. prostatici





NLL. ILIACI EXTERNI
NLL. ILIACI INTERNI
NLL. INGUINALES SPF.
NLL. SACRALES
NLL. LUMBALES

