

Class IV.

*Defects on proximal surfaces of
frontal teeth – caries, trauma*



Access



Cavosurface margin

Limited on the defect

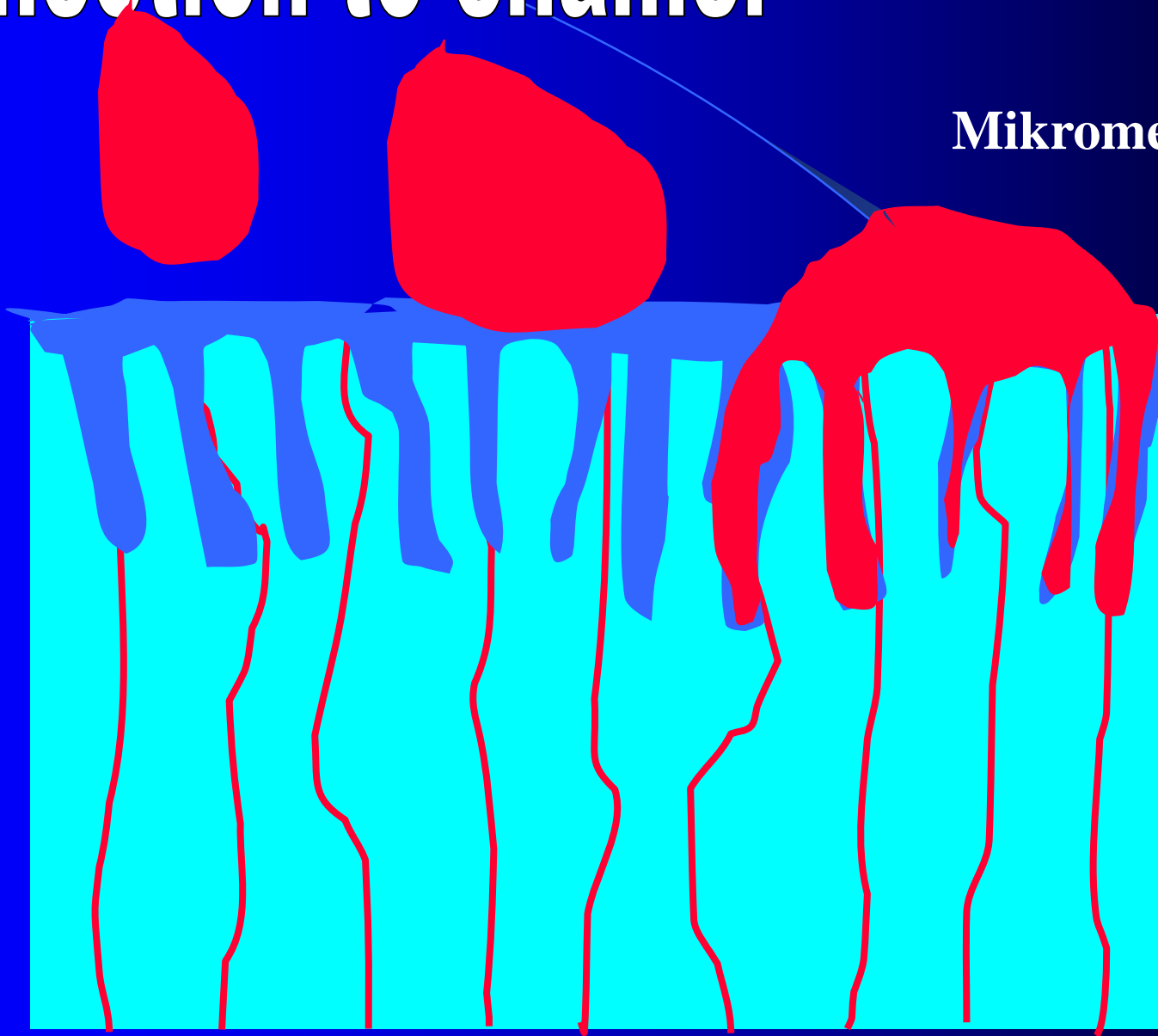


Principle of retention

- Composite filling material only
 - Micromechanical retention

Connection to enamel

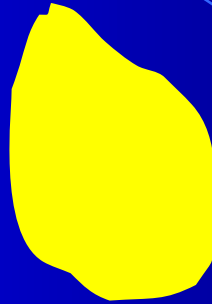
Mikromechanical



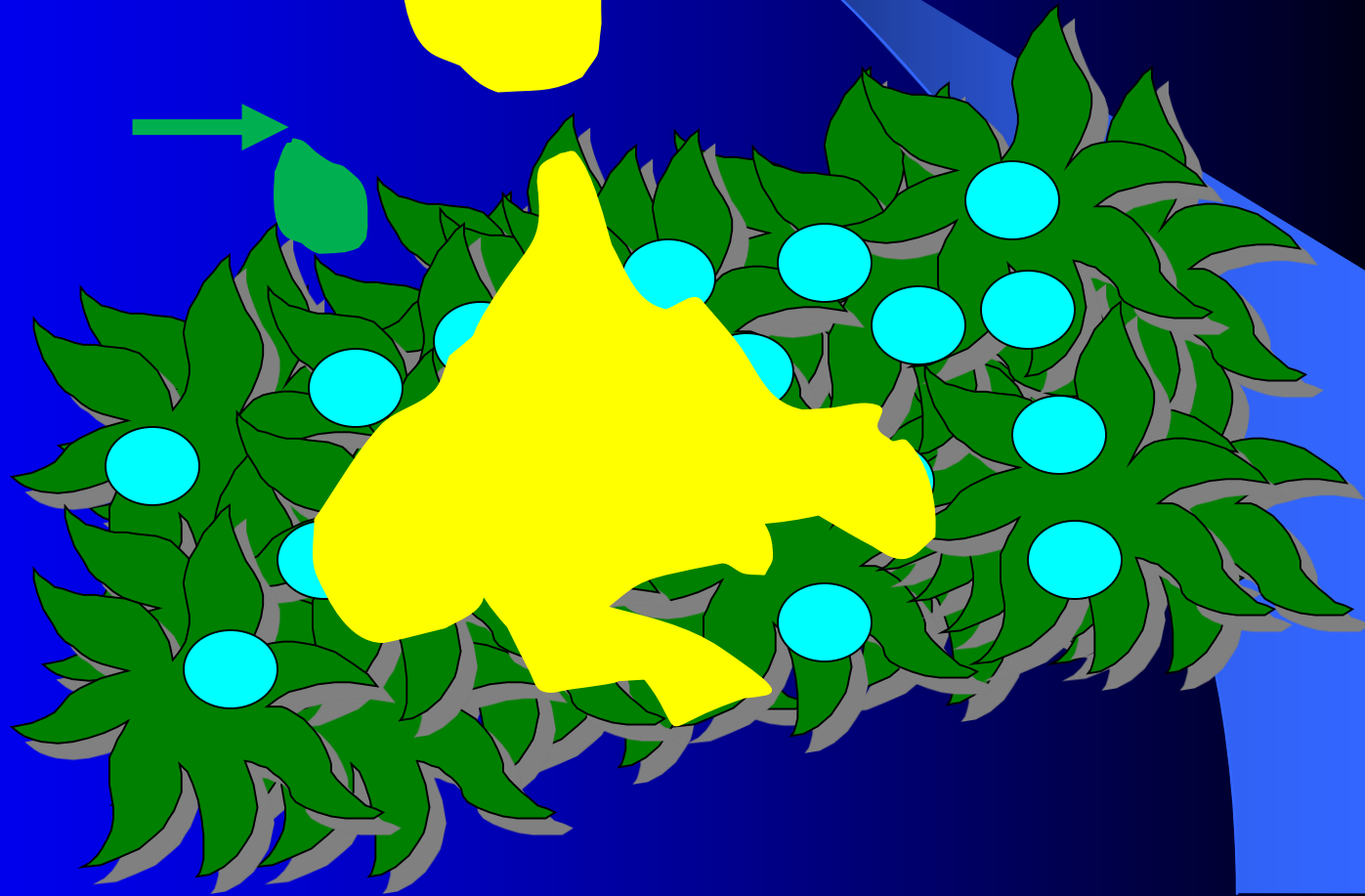
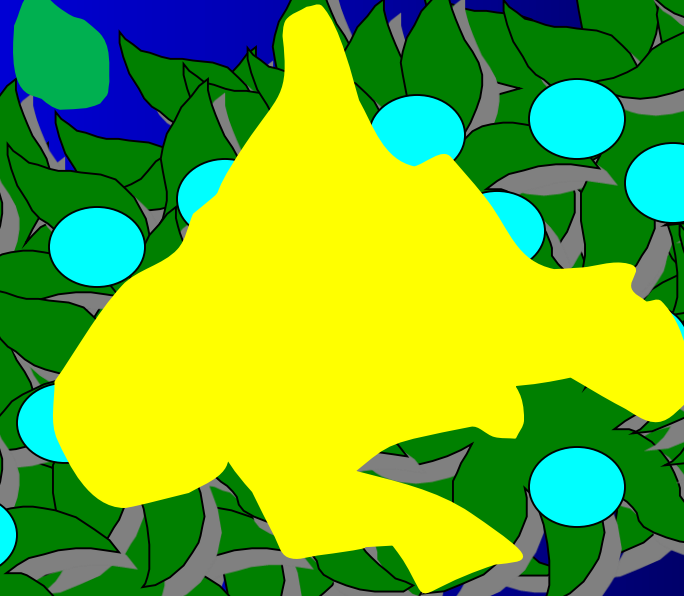
Connection to dentin

Micromechanical

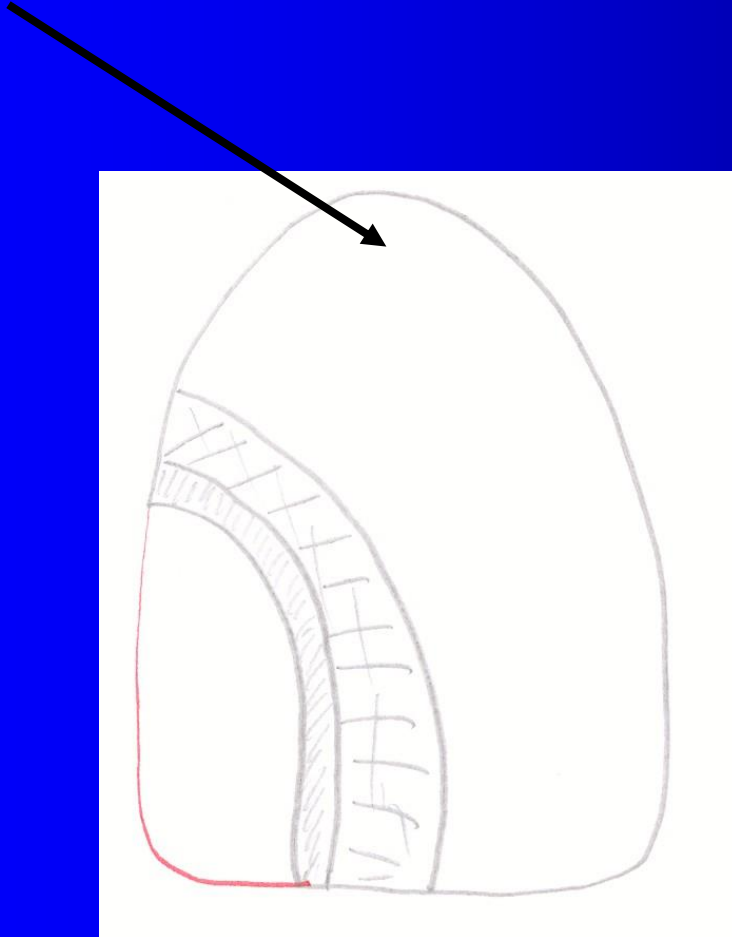
Primer

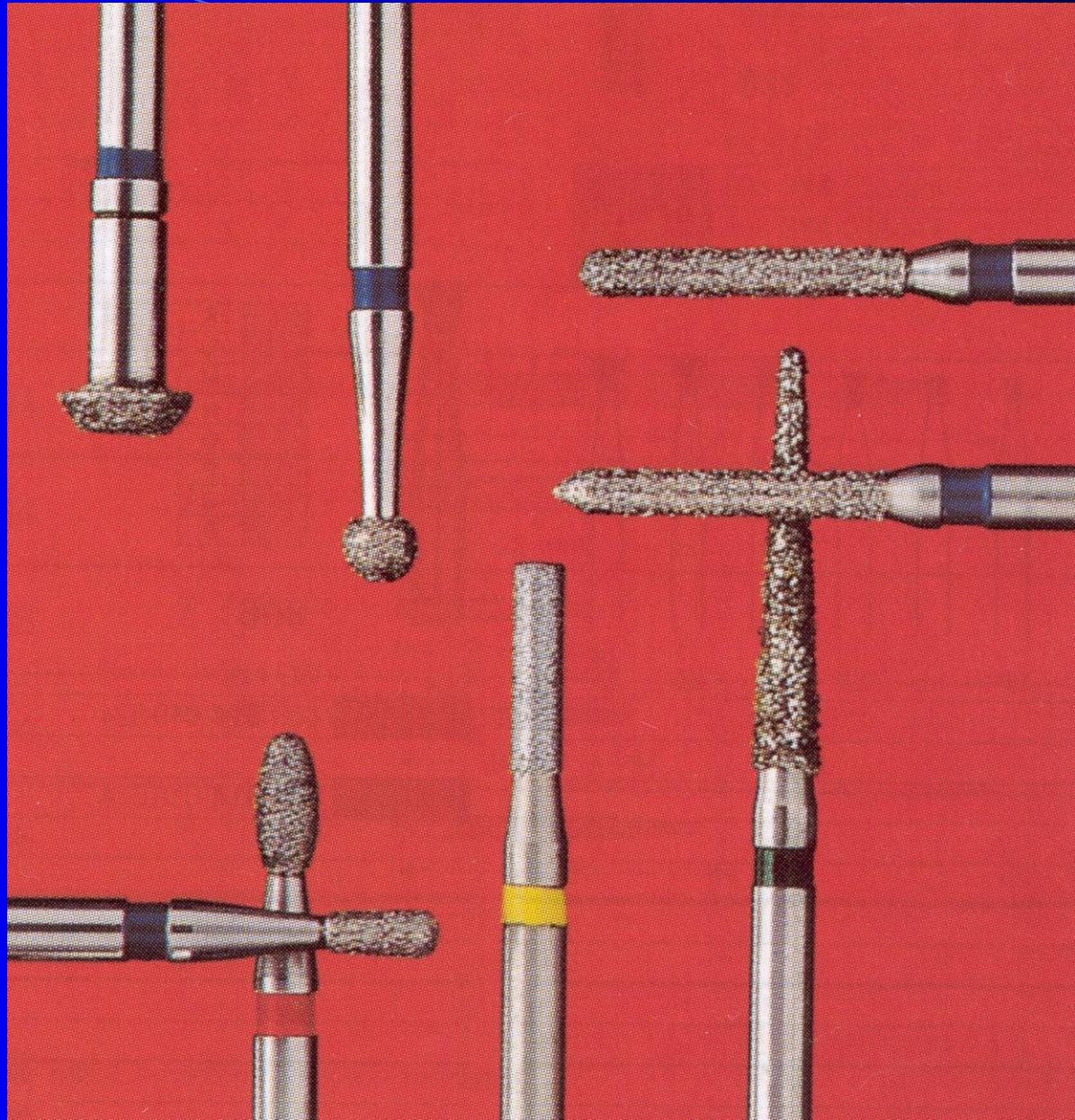


Bond



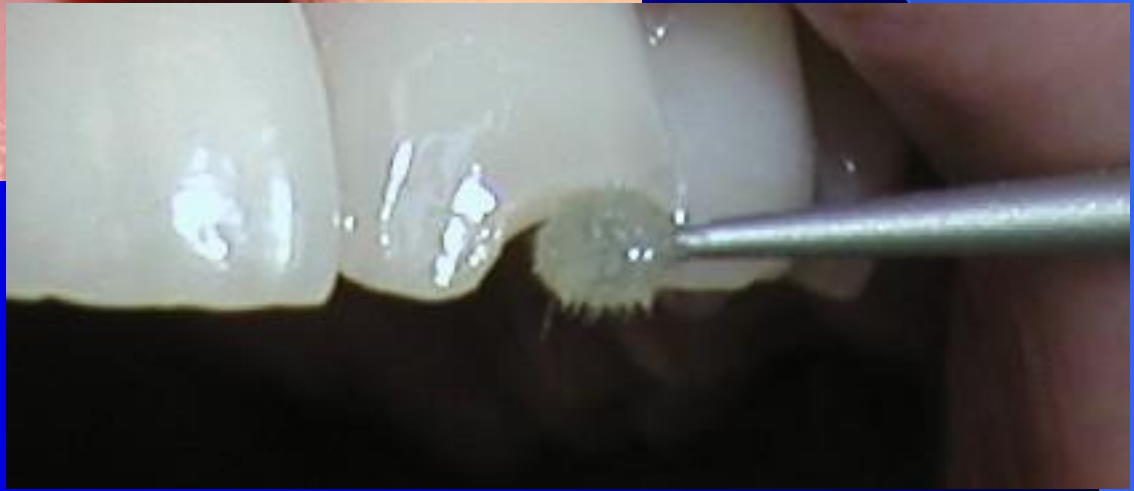
Bevel the enamel around the defect

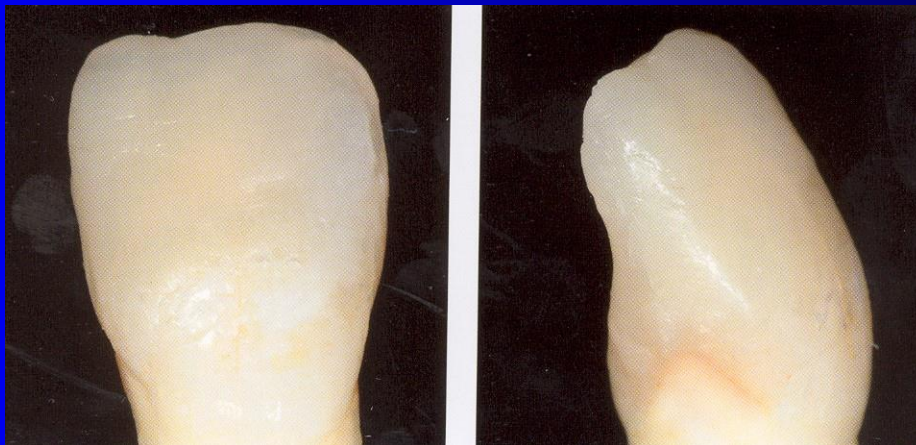
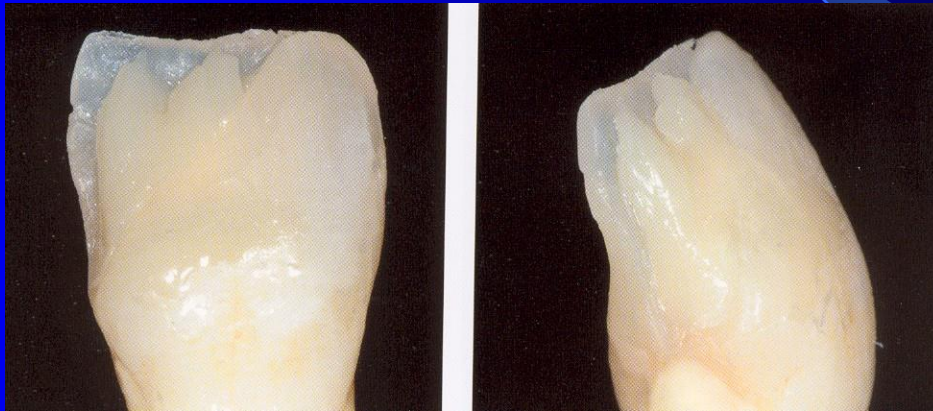




Resistance

- Composite material
- Enamel supported with dentin with exception of labial surface
- Good polymerization







Silicone key



Oral surface



Incisal edge















