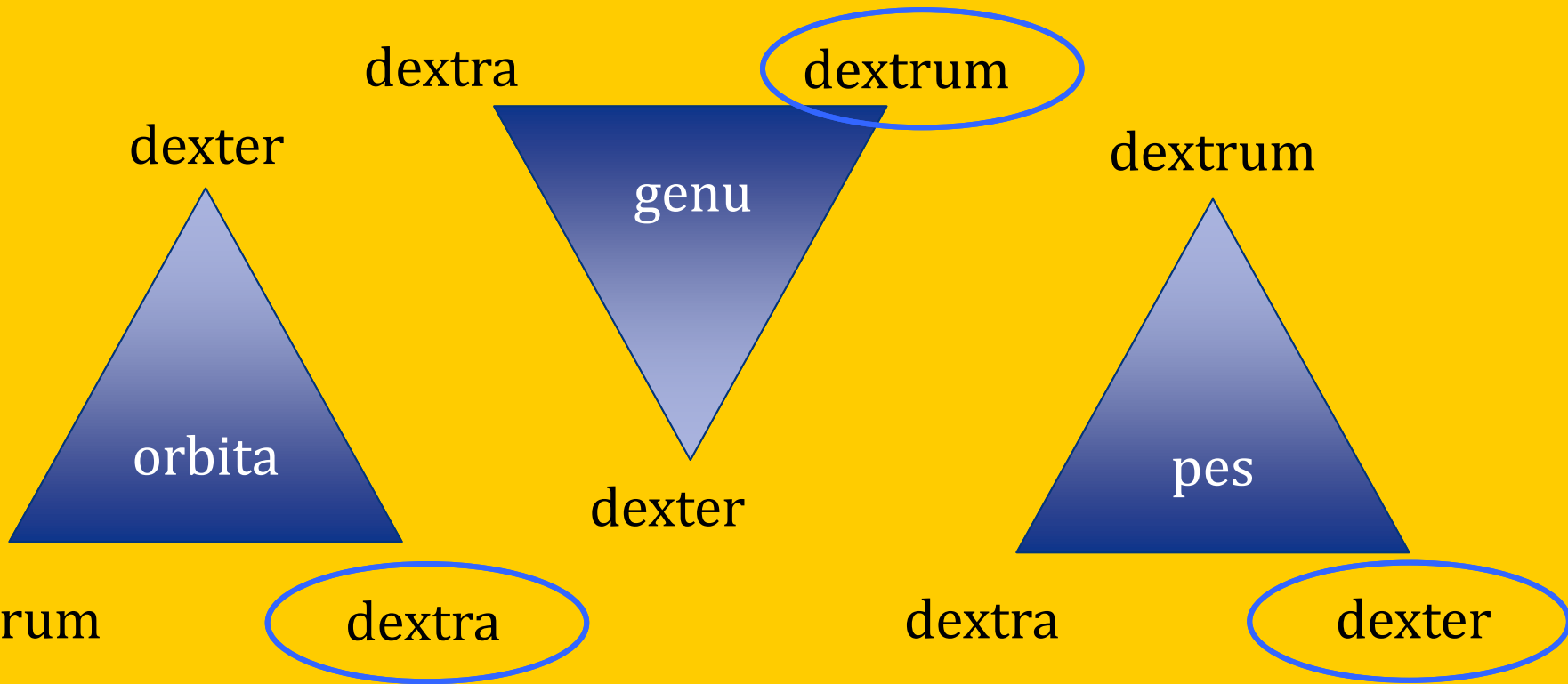


# Basic medical terminology 4

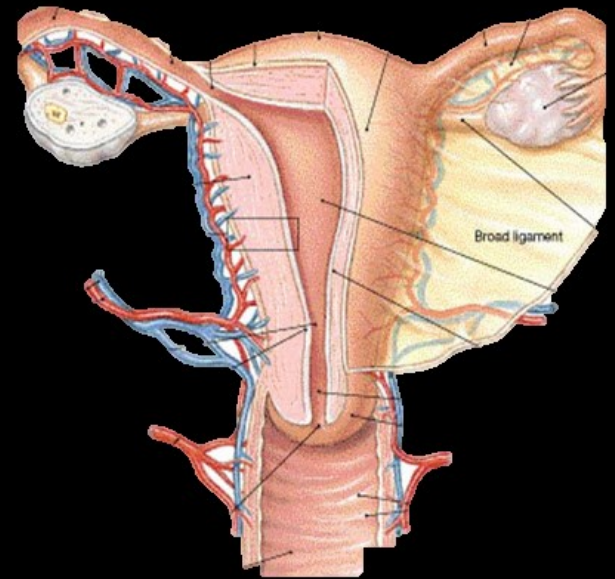
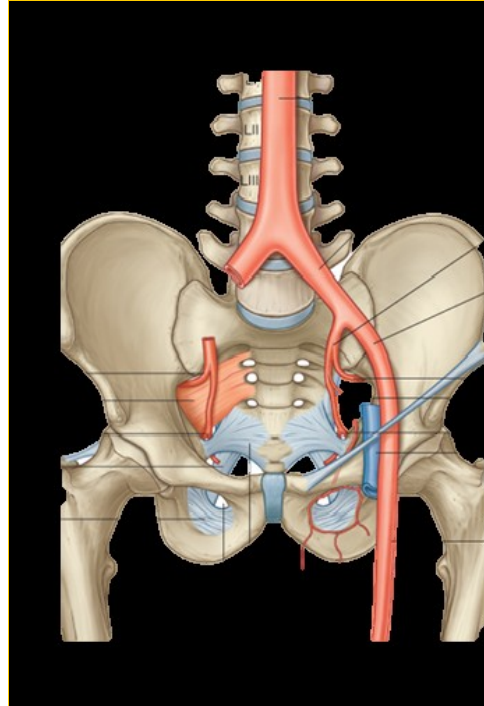
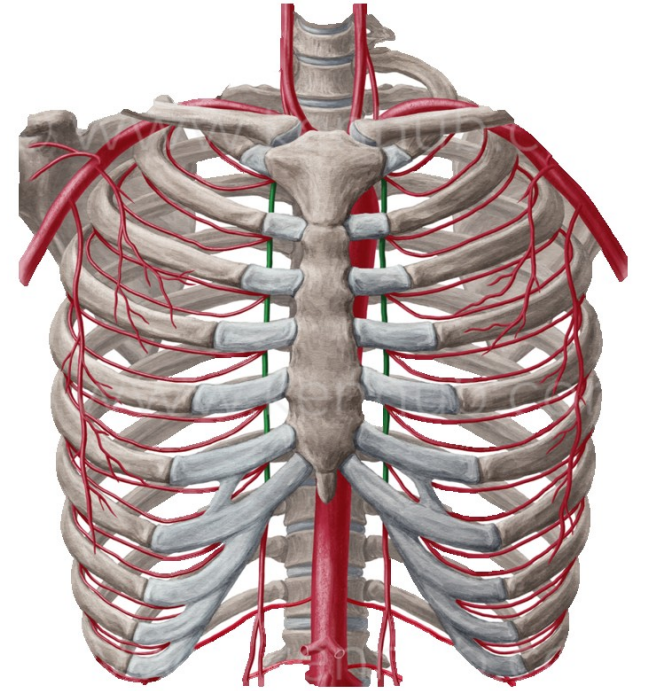
# Questions

- What are the two main types of adjectives?  
What are their endings?
- Based on what do I connect adjective to the noun?
- What case is the noun in the state of dependency in?

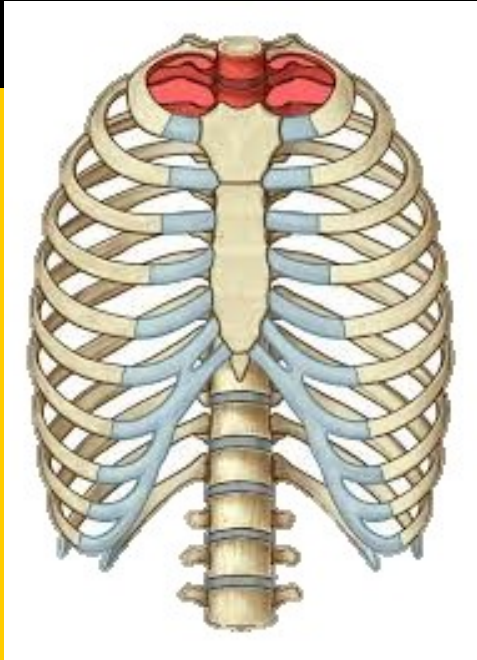
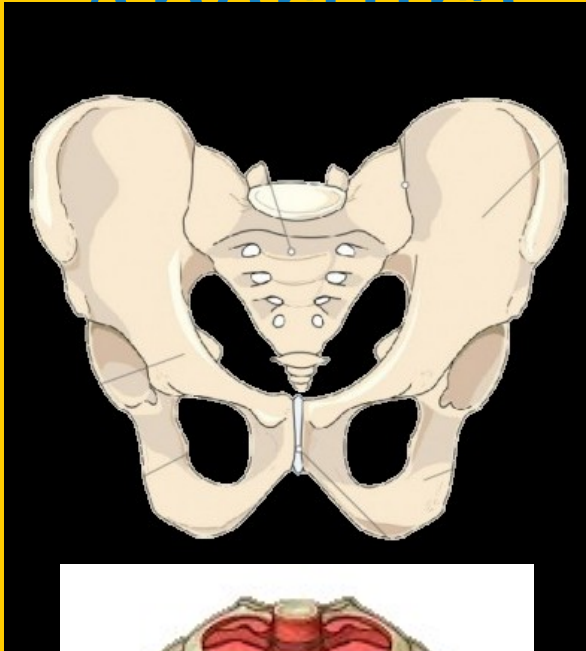
What is the correct adjective for the noun  
in the triangle?



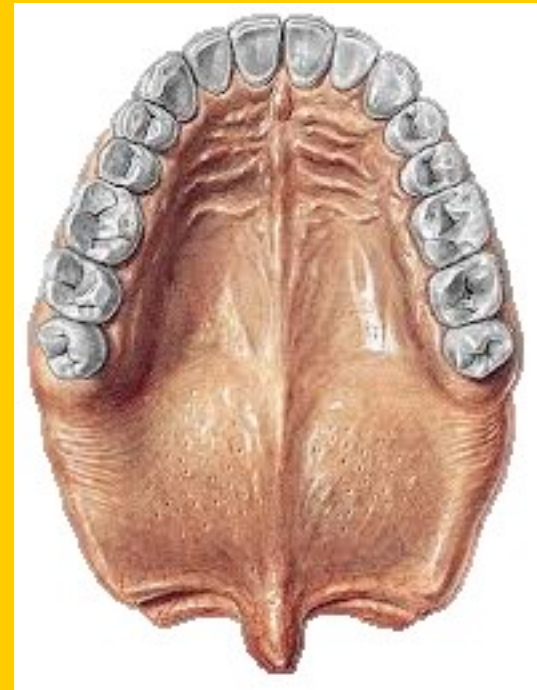
# Arteriae



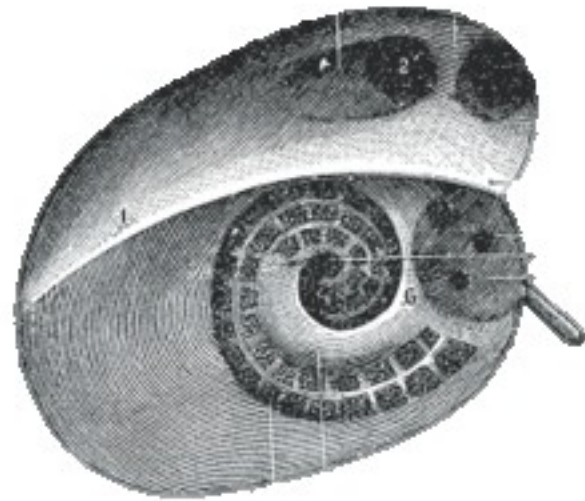
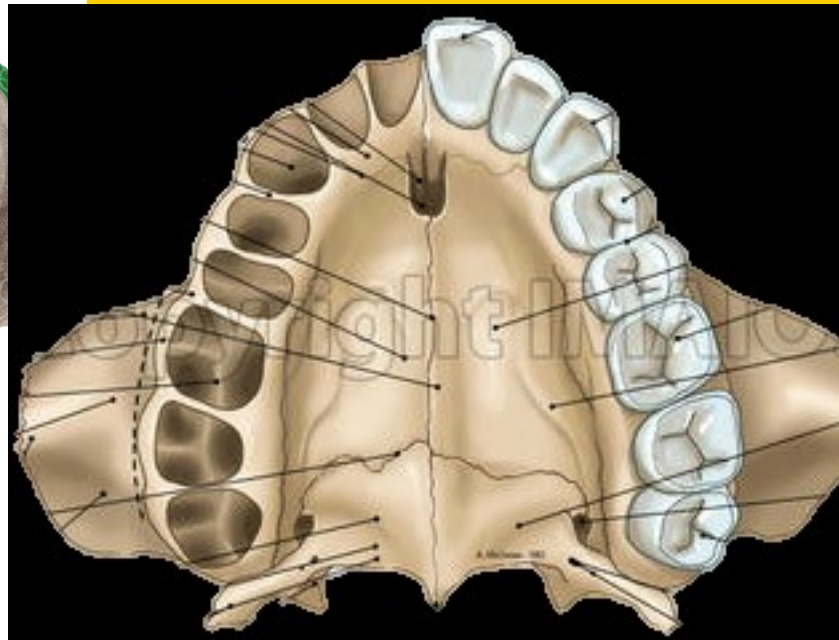
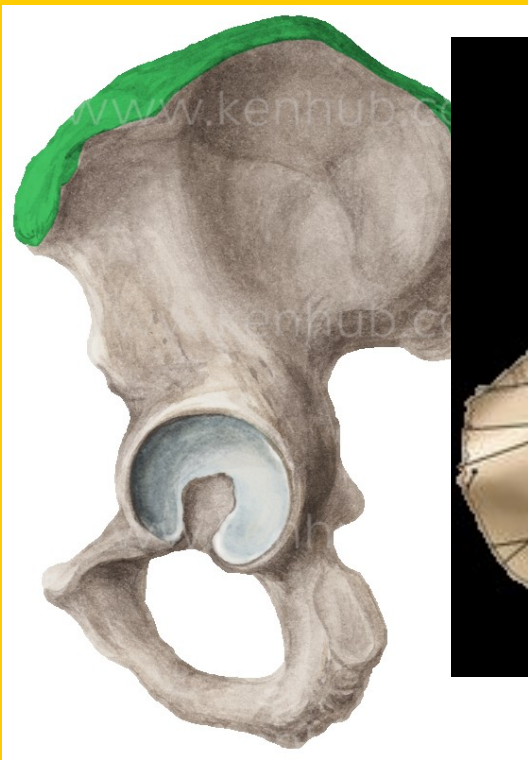
Apertura



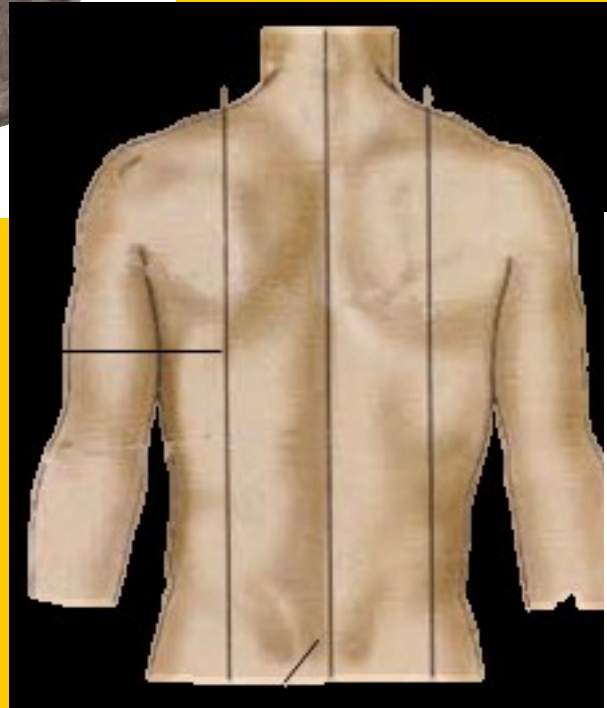
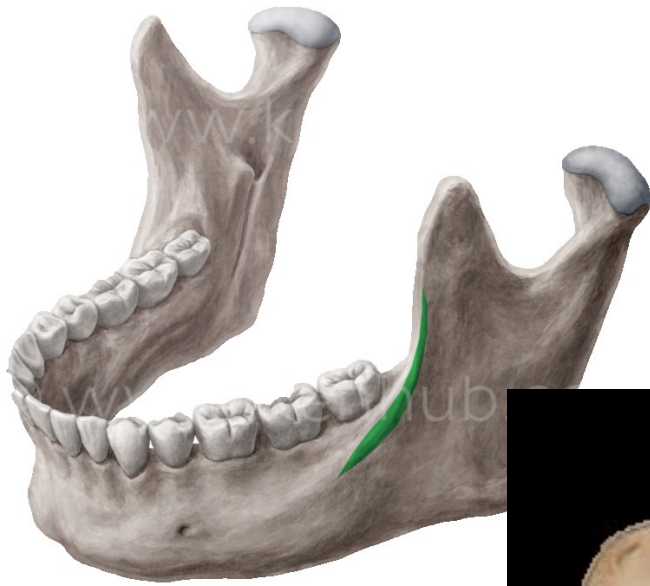
Rhaphé

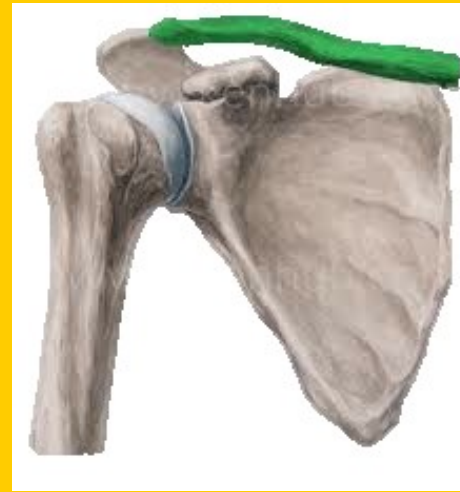
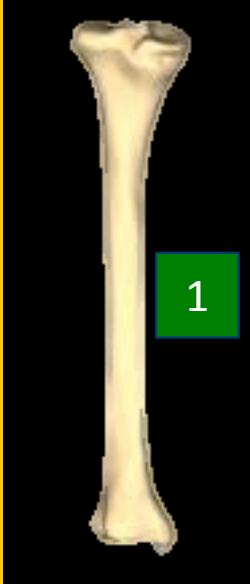


# Cristae



# Lineae







# Ordinal numerals 1-7

- Primus, a, um
- Secundus, a, um
- Tertius, a, um
- Quartus, a, um
- Quintus, a, um
- Sextus, a, um
- Septimus, a, um

# Costae

Costa vera sinistra

Costa prima

Costa secunda

Costa tertia

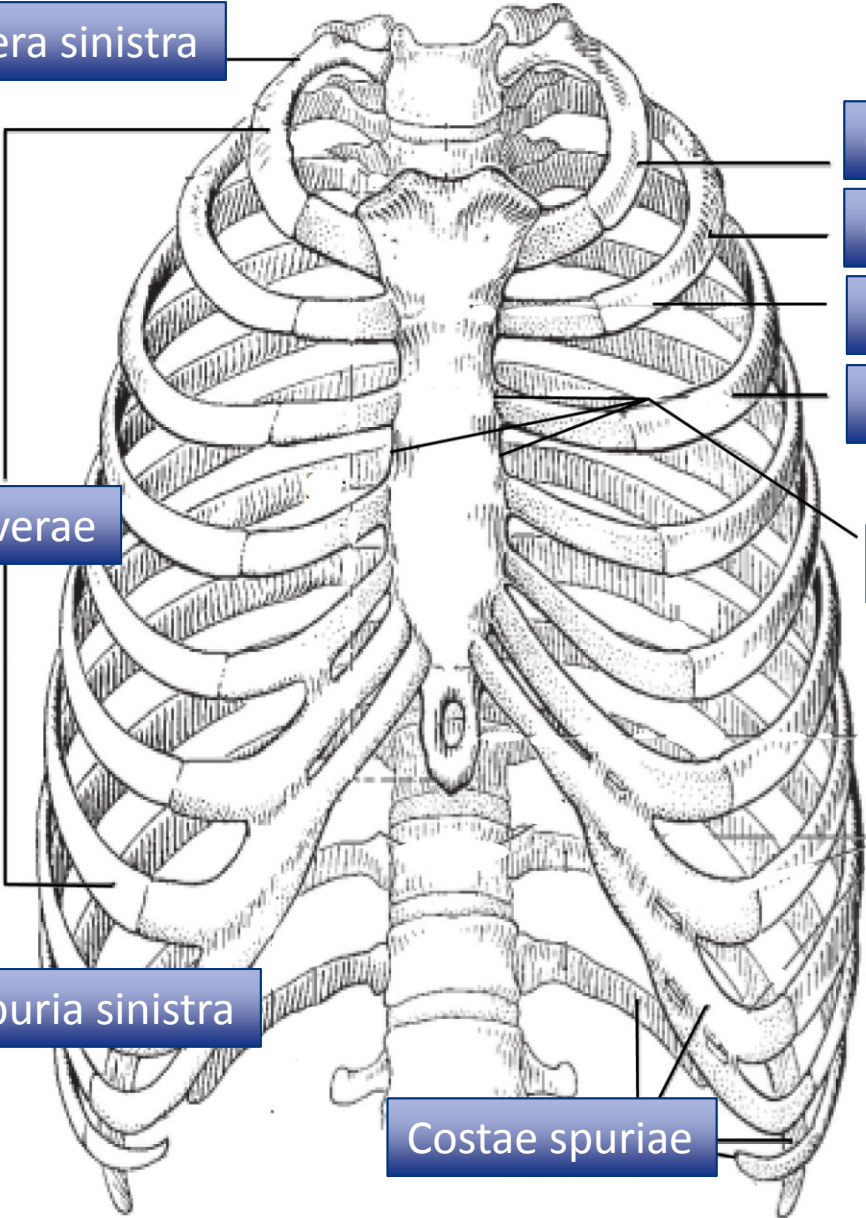
Costa quarta

Costae verae

Incisurae costarum

Costa spuria sinistra

Costae spuriae



## 2<sup>nd</sup> declension - overview

II.

nervus	septum	<i>nephros</i>	<i>colon</i>
m.	n.	m.	n.
-us/-er	-um	-os	-on
-ī	-ī	-ī	-ī
-um	1	-on	1
-ō	-ō	-ō	-ō
-ī	-a	-ī	-a
-ōrum	-ōrum	-ōrum	-ōrum
-ōs	1	-ōs	1
-īs	-īs	-īs	-īs

Gen. sg. -I

Gender M/N

Nouns of the female gender in this declension are exceptions

Nom. sg. -US/-ER/-OS

Gender M

Nom. sg. -UM/-ON

Gender N