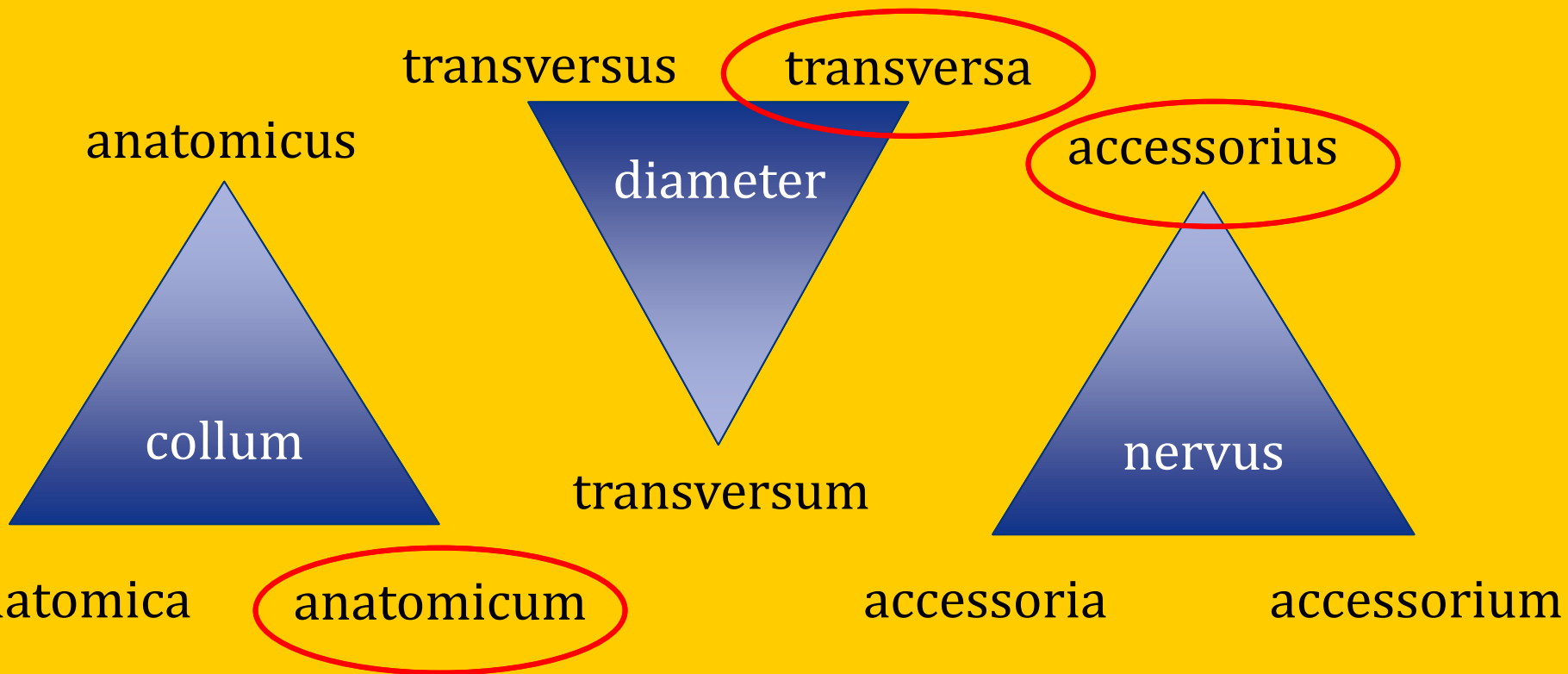


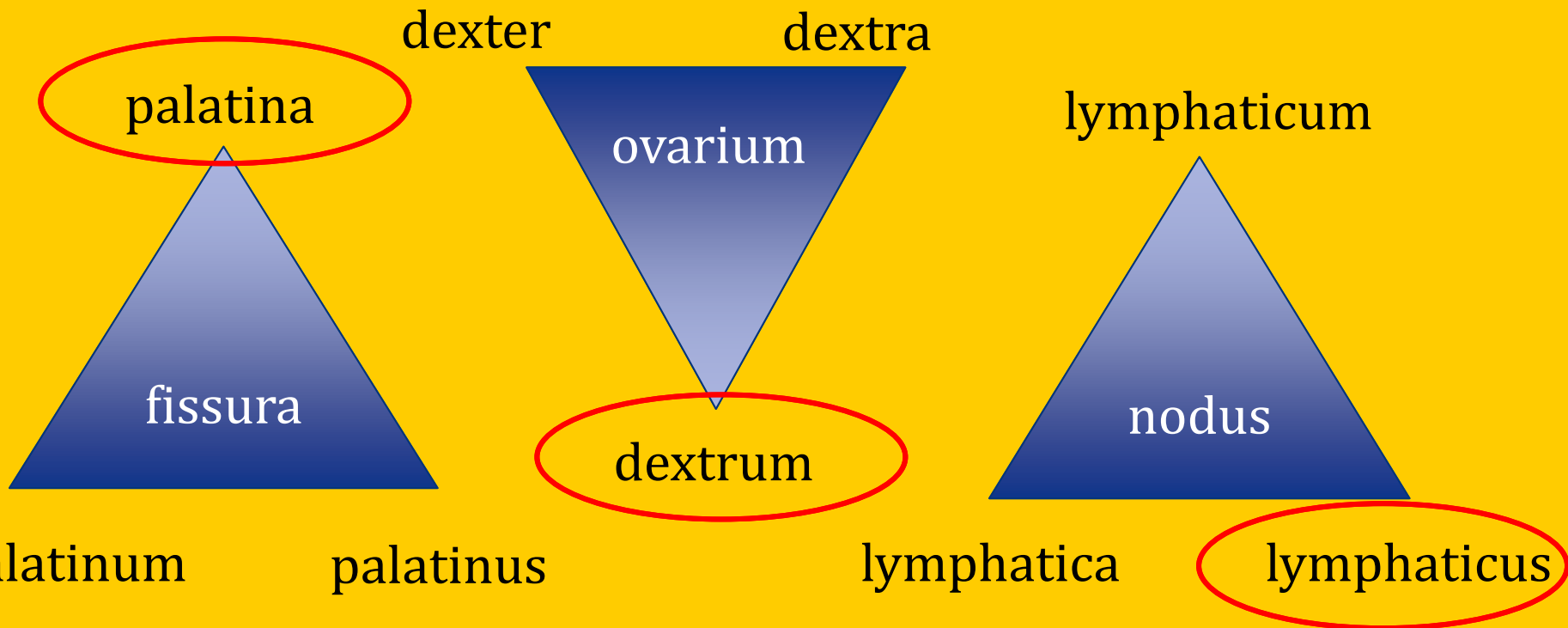
Basic medical terminology

1st and 2nd declensions

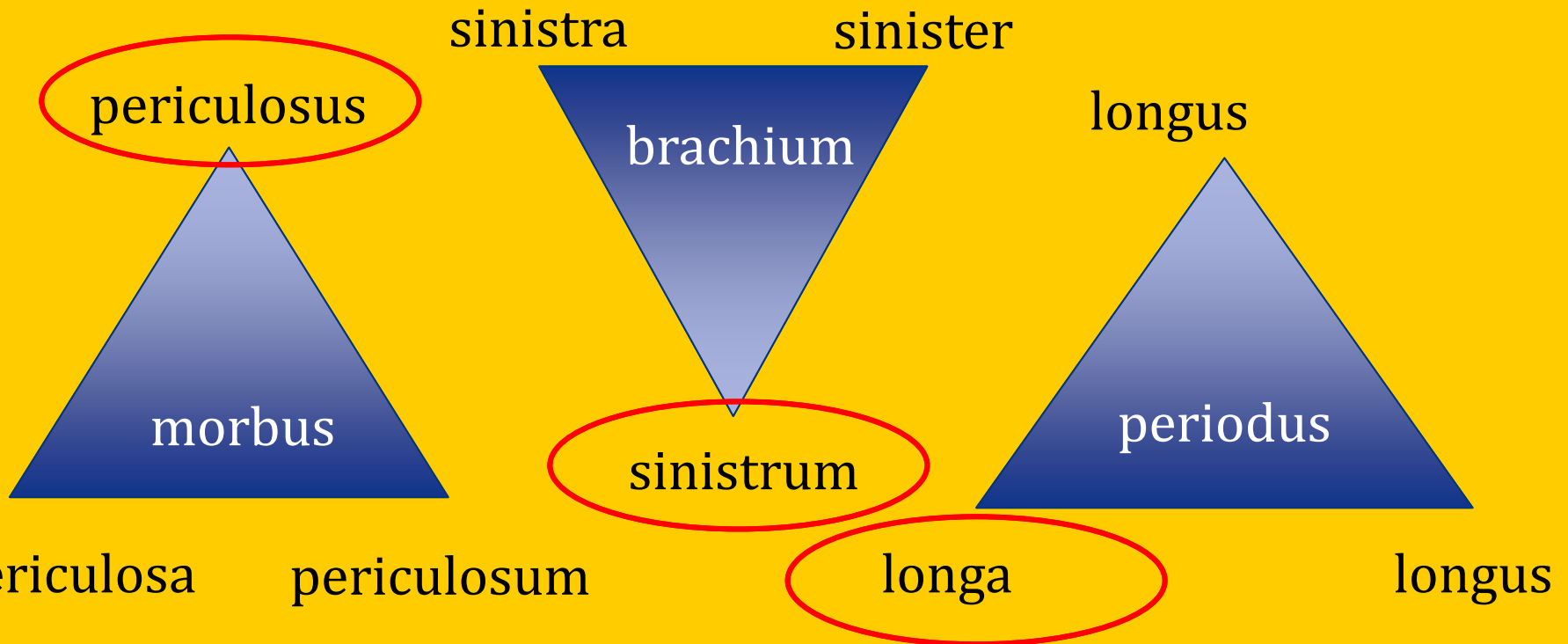
What is the correct adjective for the noun
in the triangle?



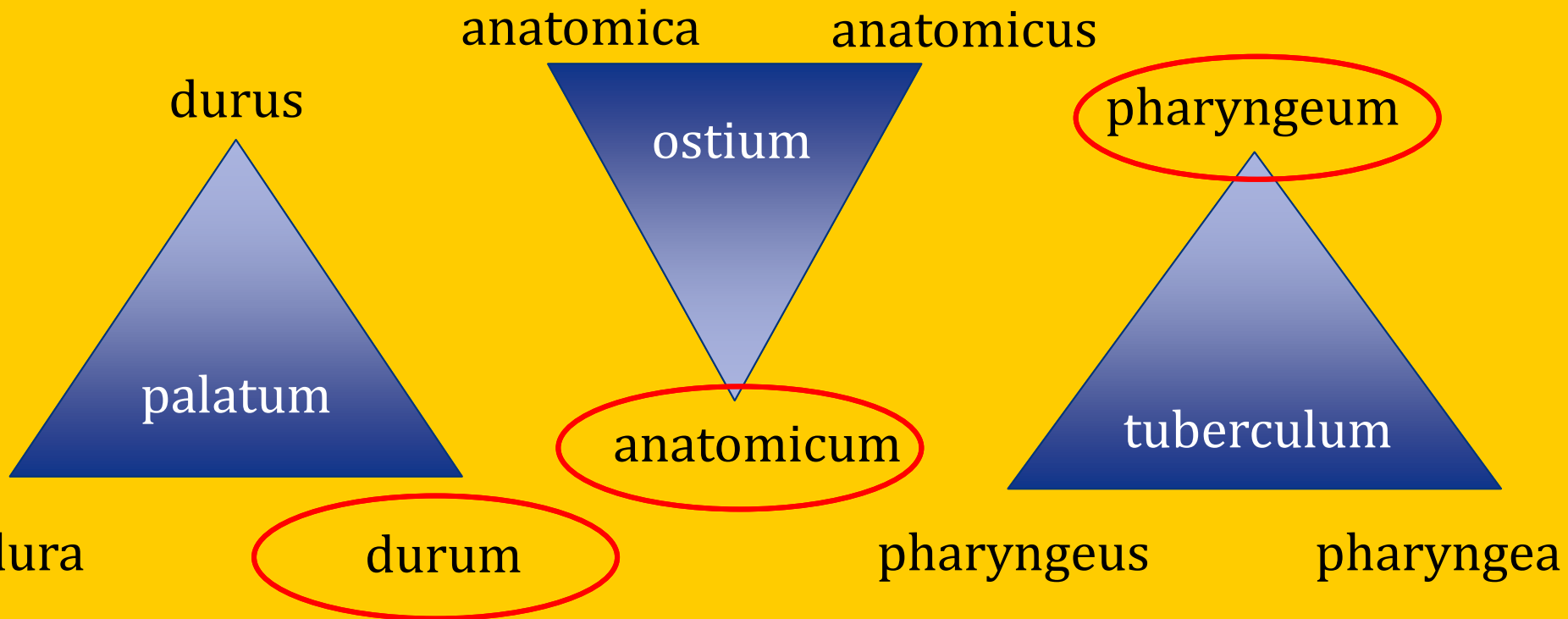
What is the correct adjective for the noun in the triangle?



What is the correct adjective for the noun in the triangle?



What is the correct adjective for the noun in the triangle?



Connect nouns

fractura + **cranium, carpus, radius, ulna, humerus, digitus, calcaneus, malleolus**
cranii carpi radii ulnae humeri digiti calcanei malleoli

cancer + **ovarium, uterus, ventriculus, cerebrum, lingua, rectum, intestinum caecum**
ovarum uteri ventriculi cerebri linguae recti intestini caeci

morbus + **cerebrum, organum, ventriculus, bronchus, arteria**
cerebri organi ventriculi bronchi arteriae

anomalia + **oculus, uterus, mandibula, oesophagus**
oculi uteri mandibulae oesophagi

Decide on declension and paradigm

- Chole
- Medulla
- Therapia
- Ascites
- Methodus
- Tarsus
- Ganglion
- Collum
- Colon
- Brachium
- Alvus
- Diameter
- Cancer
- Pylorus
- Puer
- Membrana

Change for plural or singular

EXAMPLE:

Diploe = nom. Sg. → Pl. = **Diploae** /because it is declined like 1st Greek declension, paradigm SYSTOLE

Acromia	→	Acromion (II. Decl./colon)
Anomalia	→	Anomaliae (I. Decl./vena)
Ostia	→	Ostium (II. Decl./cerebrum)
Cancri	→	Cancer (II. Decl./musculus)
Radii	→	Radius (II. Decl./musculus)
Pylorus	→	Pylori (II. Decl./musculus)
Ophthalmos	→	Ophthalmi (II. Decl./nephros)
Diabetes	→	Diabetae (I. Decl./diabetes)
Diameter	→	Diametri (II. Decl. Musculus)

What is the gender, number and case of the following nouns?

- palata palatum, i, n., nominative pl. *or* accusative pl.
- angulis angulus, i, m./ ablative pl.
- oculos oculus, i, m./ accusative pl.
- ovariorum ovarium, ii, n./ genitive pl.
- nephron nephros, i, m./ accusative sg.
- alvo alvus, i, f./ ablative sg.
- icterum icterus, i, m./ accusative sg.
- olecranon olecranon, i, n./ nominative *or* accusative sg.
- methodi methodus, i, f./ genitive sg. *or* nominative pl.
- signo signum, i, n./ ablative sg.

Decide what is correct

The cause of deadly anaemia

A causa anaemia perniciosa B causa anaemiae perniciosae

Insufficiency of the valve of the aorta

A insufficientia valvulae aortae B insufficientia aortae valvulae

Because of acute dyspnoea

A propter dyspnoen acutam B propter dyspnoen acuten

Fracture of the right collar bone

A fractura dextra clavicula B fractura claviculae dextrae

Find nouns and adjectives, which adjective is dependent on which noun?

Tunica **serosa** vesicae **felleae**

Plica venae **cavae** **sinistrae**

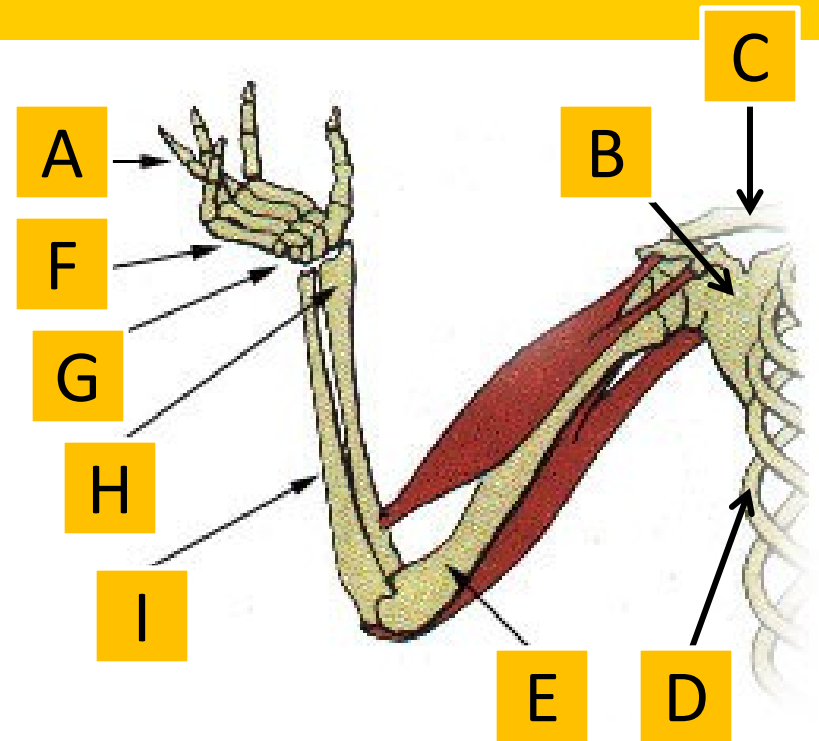
Therapia **chirurgica** tonsillae

Fractura fibulae **complicata**

Colica **periculosa** **complicata**

Ossa membri superioris et allia:

1. Right shoulder blade
2. Complicated fracture of the left collar bone
3. Humerus
4. True and false ribs
5. Radius
6. Fingers
7. Open fracture of the right ulna and radius
8. Wrist
9. Metacarpus



Form phrases from words in boxes

Uterus Ligamentum
Latus, a, um

Cerebrum
Transversus, a, um
Fissura

Antebrachium Membrana
Interosseus, a, um

Anomalia Bulbus
Congenitus, a, um
Oculus

Form phrases from words in boxes

Tunica Vesica

Mucosus, a, um

Felleus, a, um

Sinister, a, um

Thyreoideus, a, um

Lobus Glandula

Truncus

Accessorius, a, um

Nervus

Plica (pl.)

transversus, a, um

Rectum

Form phrases from words in boxes

Collum

Vesica

Felleus, a, um

Musculus (pl.)

Transversus, a, um

Dorsum

Apertura Ventriculus

Quartus, a, um

Medianus, a, um

Congenitus, a, um

Durus, a, um

Palatum

Fissura

Fill in missing endings:

fossa vestibul_____

ligamentum transvers_____ scapul_____

fractura palat_____ claus_____

nervus transvers_____ coll_____

nodi lymphatic_____ iliac_____ intern_____

fractura sept_____ nas_____

- A) Fill in missing endings
B) Change into the plural

apertura extern _____

ruptura ven _____ cav _____

tunica mucos _____

costa spuri _____

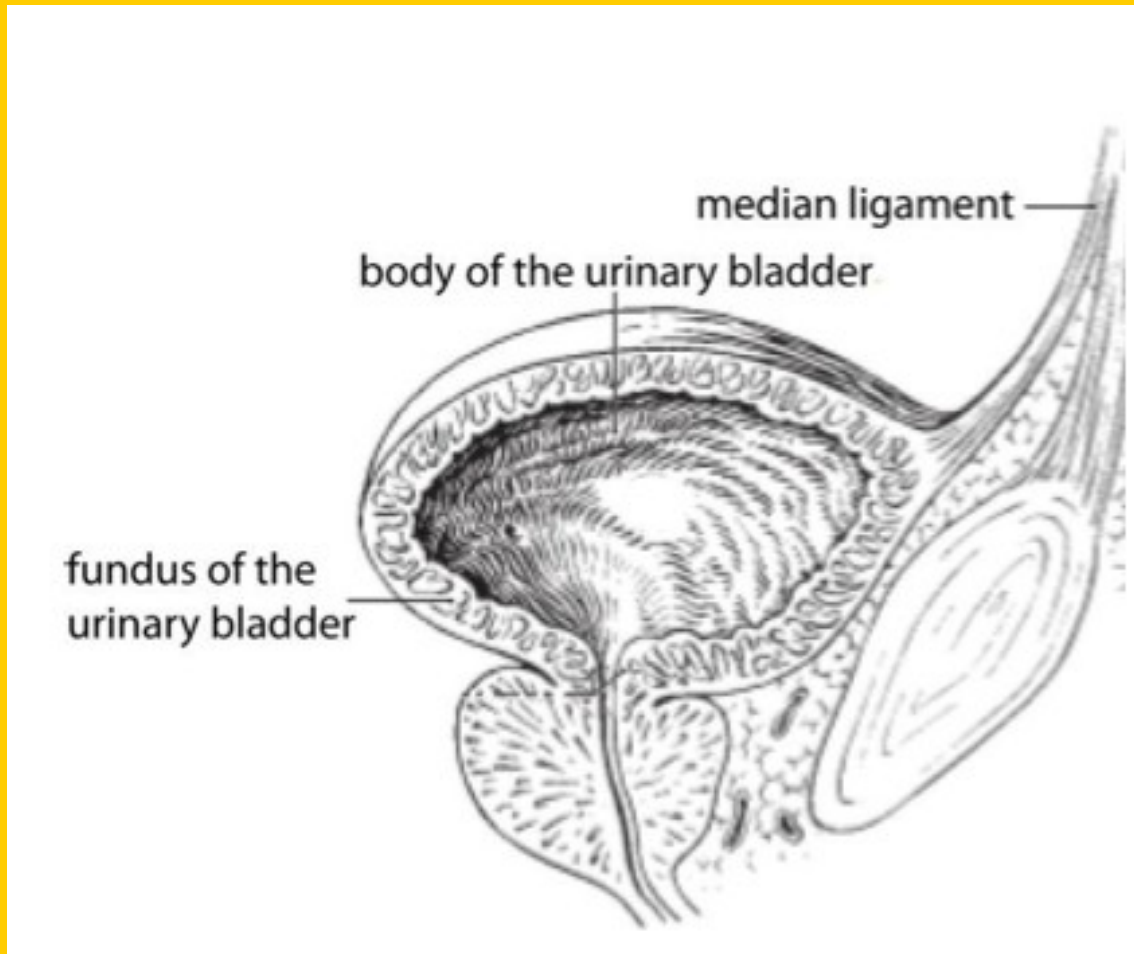
costa liber _____

nucleus rub _____

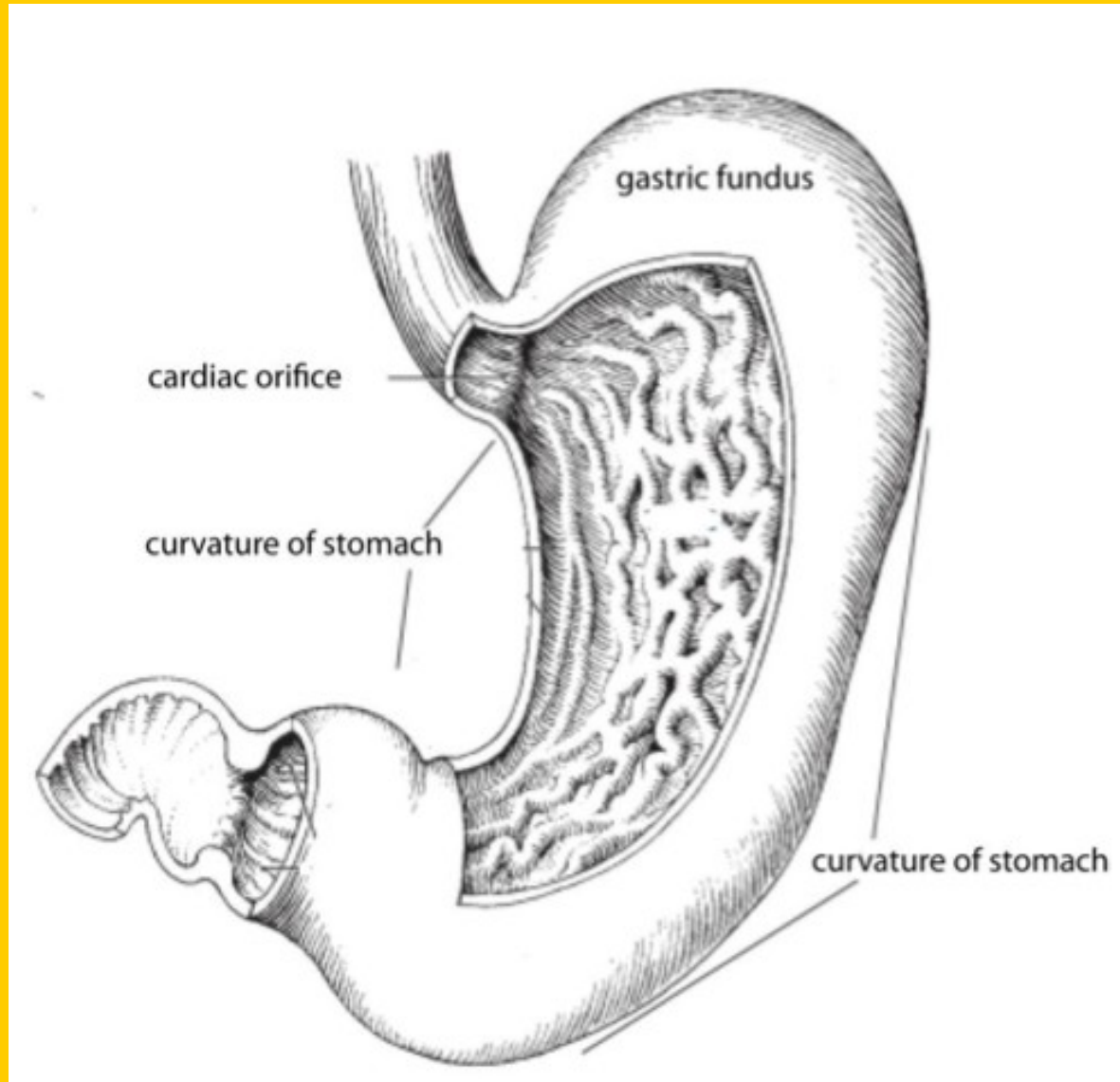
bronchus sinist _____

nasus extern _____

Translate the legend to the image:



Translate the legend to the image:



Translate the legend to the image:

