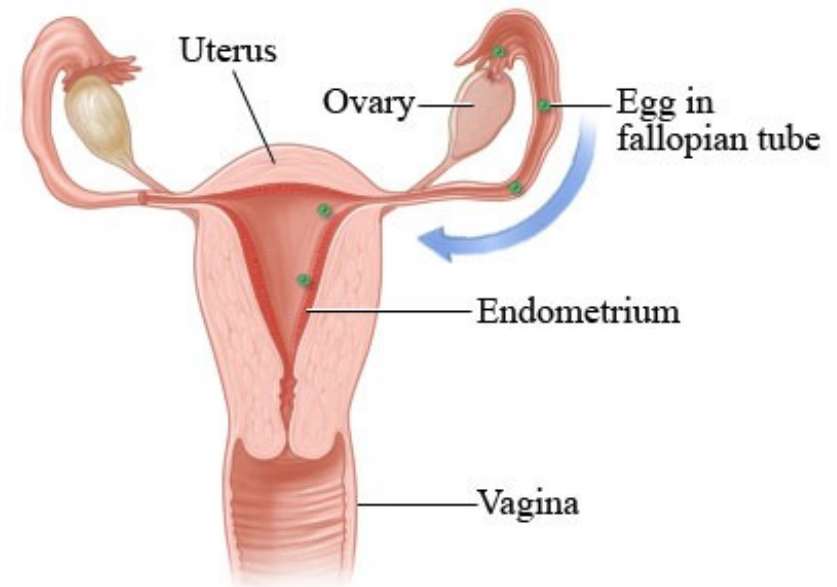


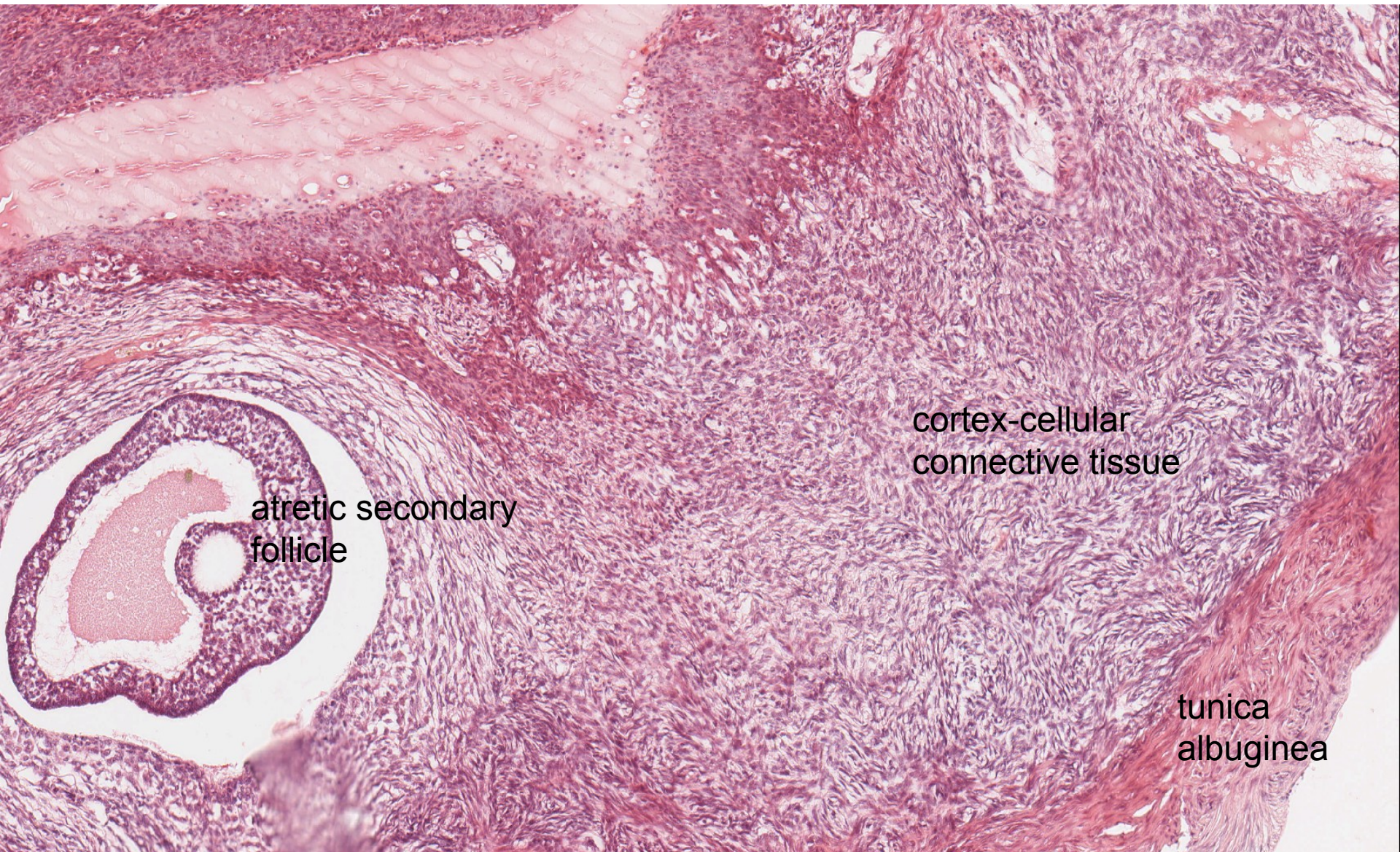


FEMALE REPRODUCTIVE SYSTEM I

- **ovary** (ovarium, oophoron)
- **oviduct** (tuba uterina, tuba Fallopii, salpinx)
- **uterus** (uterus, metra, hystera)



ovary-human

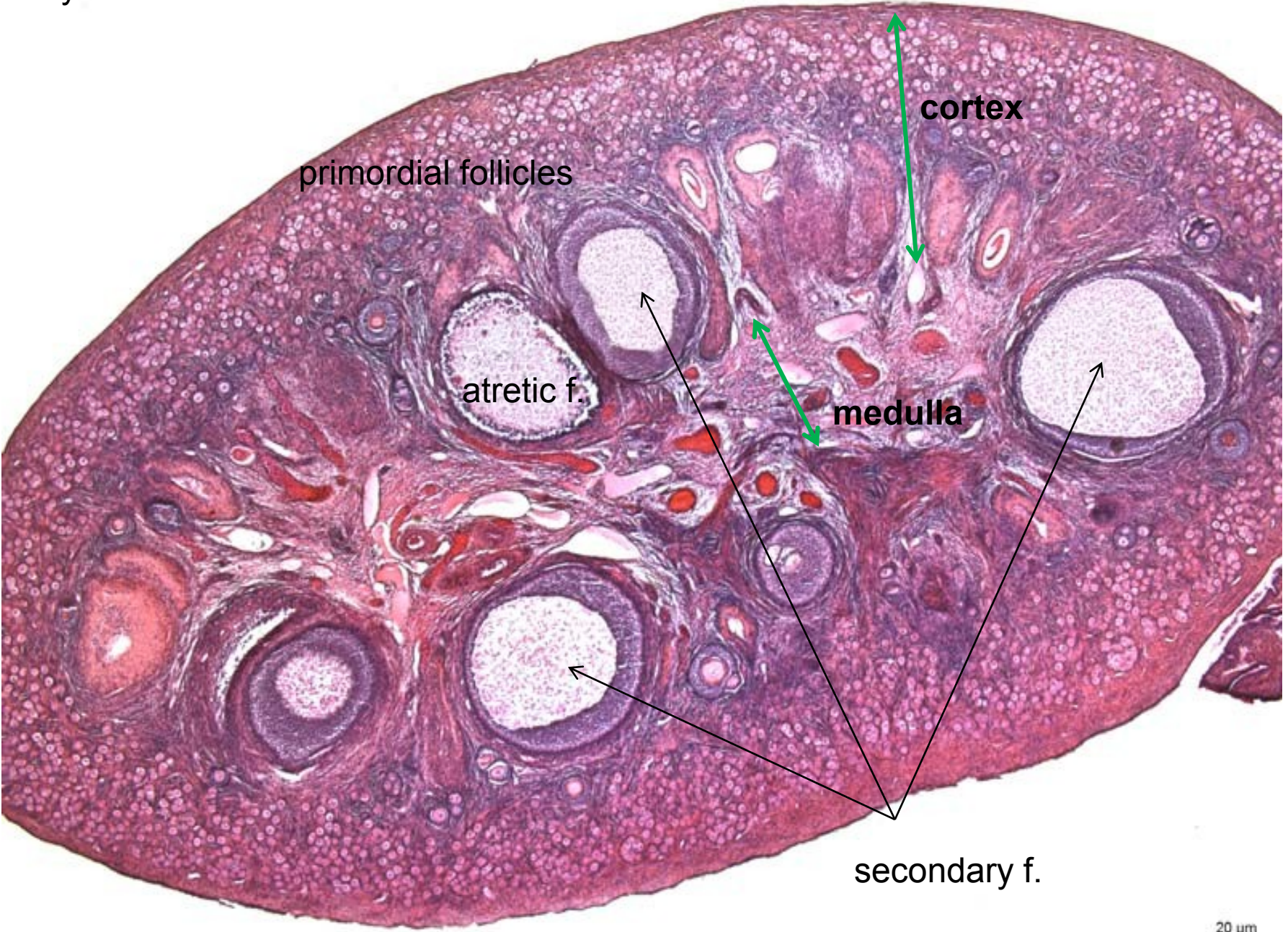


atretic secondary
follicle

cortex-cellular
connective tissue

tunica
albuginea

ovary-cat



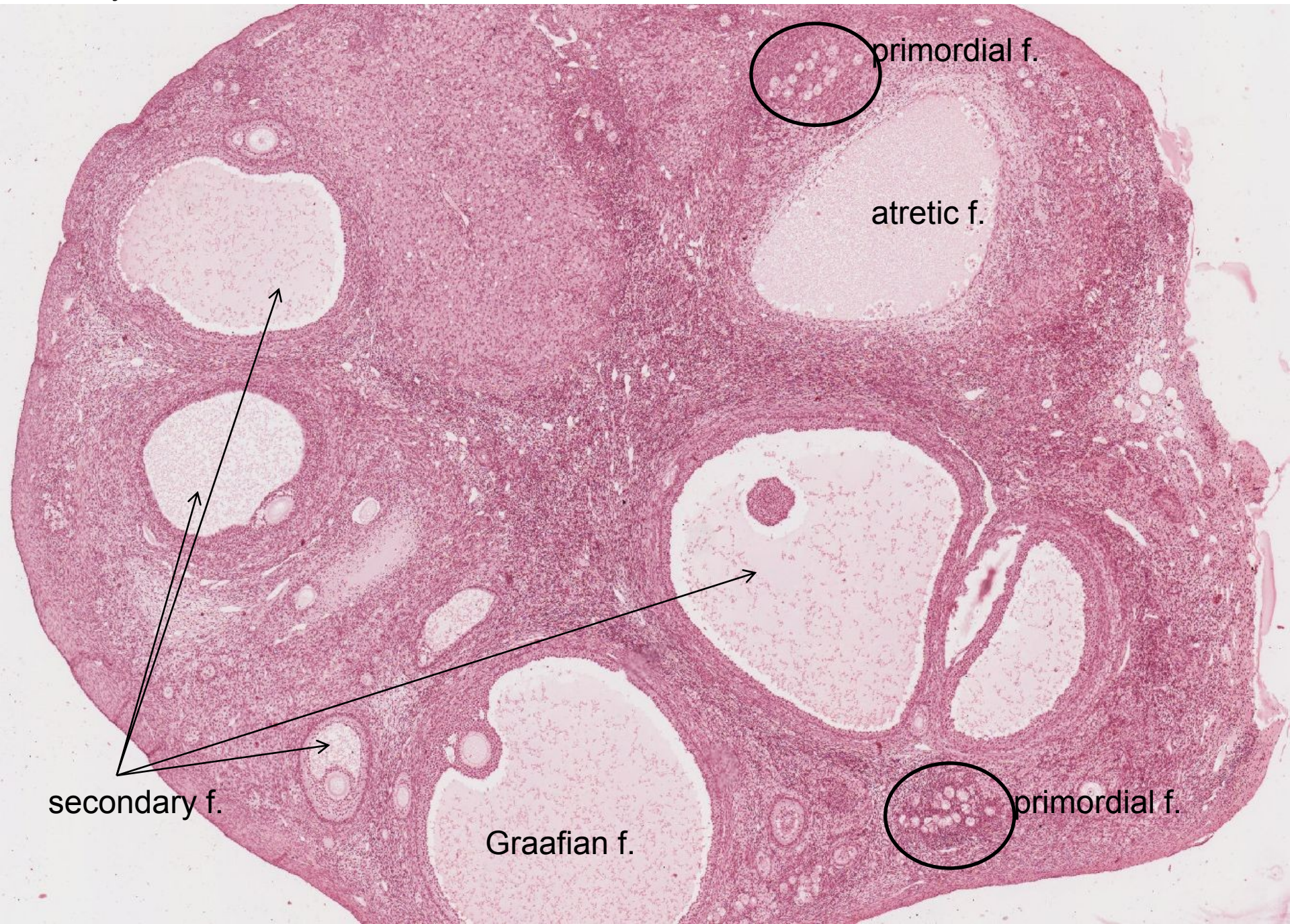
primordial follicles

cortex

atretic f.

medulla

secondary f.



primordial f.

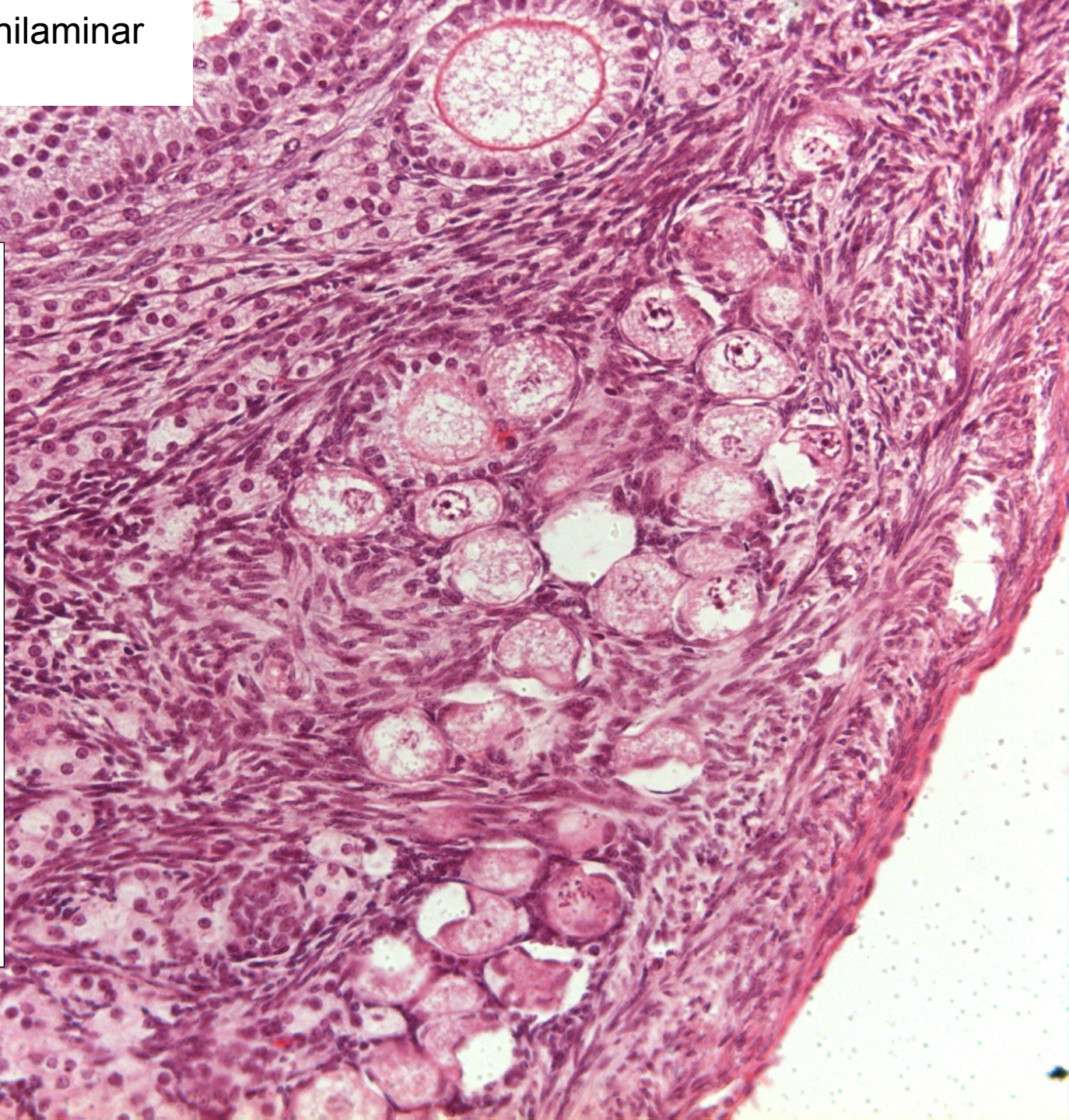
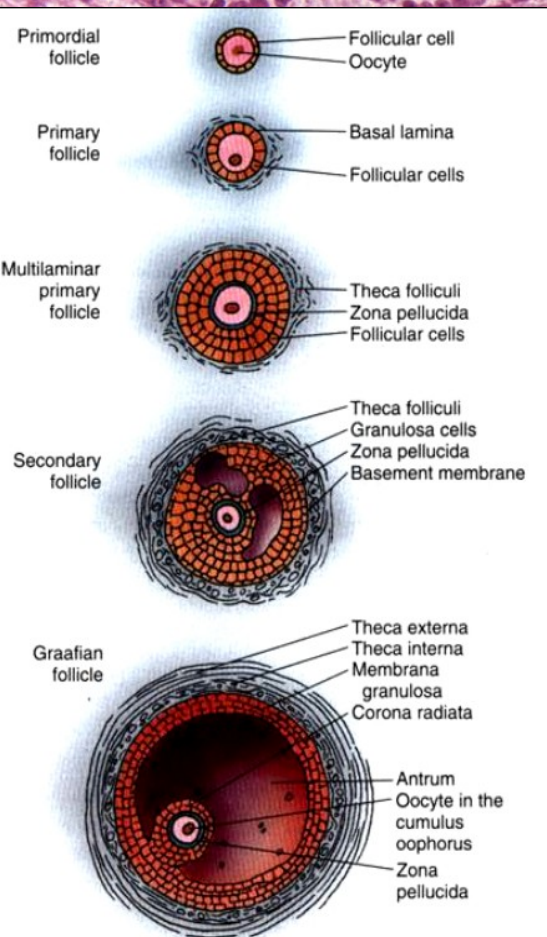
atretic f.

secondary f.

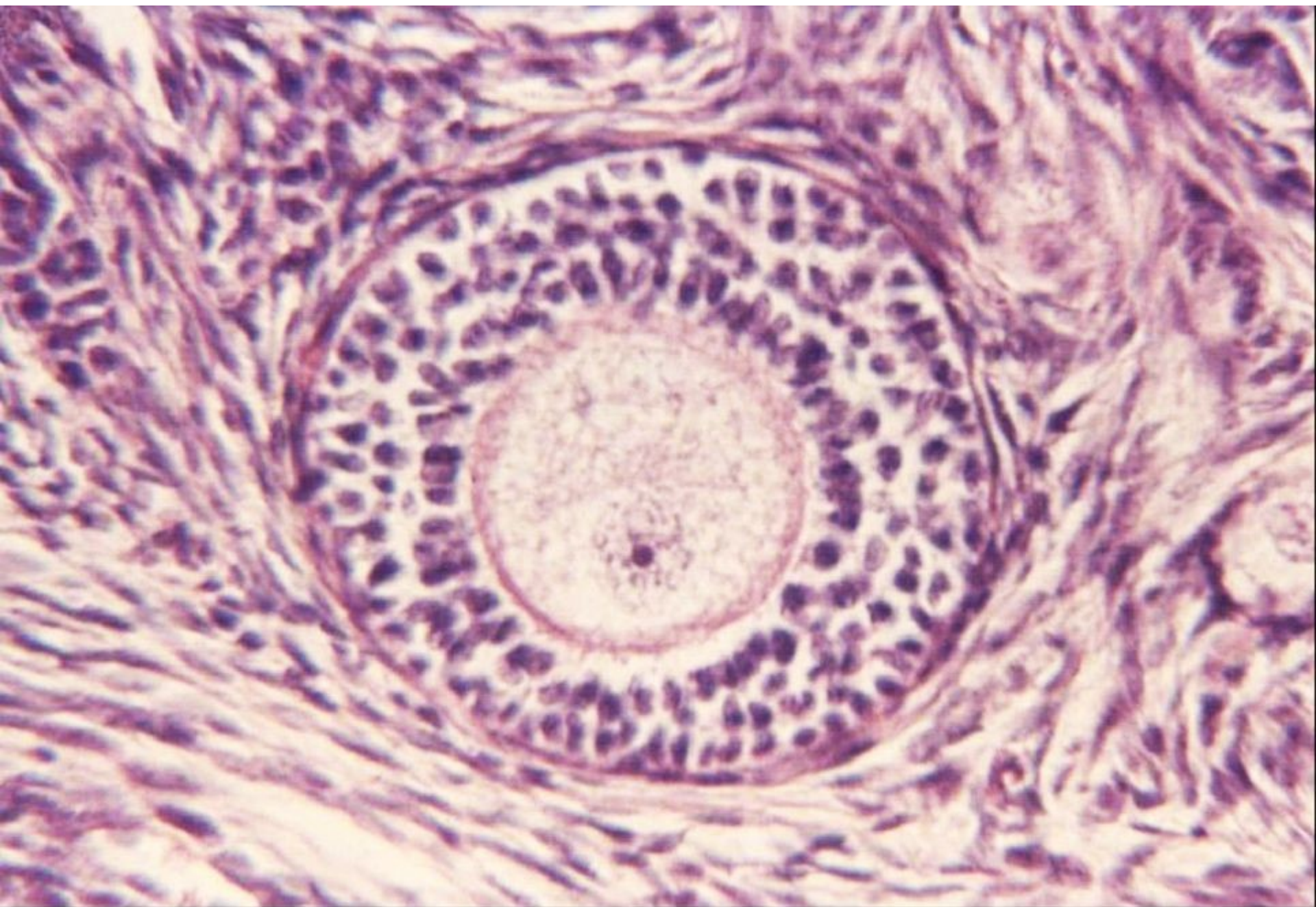
Graafian f.

primordial f.

primordial and primary unilaminar follicles



primary multilaminar follicle



ovarian follicle -TEM

fibroblasts

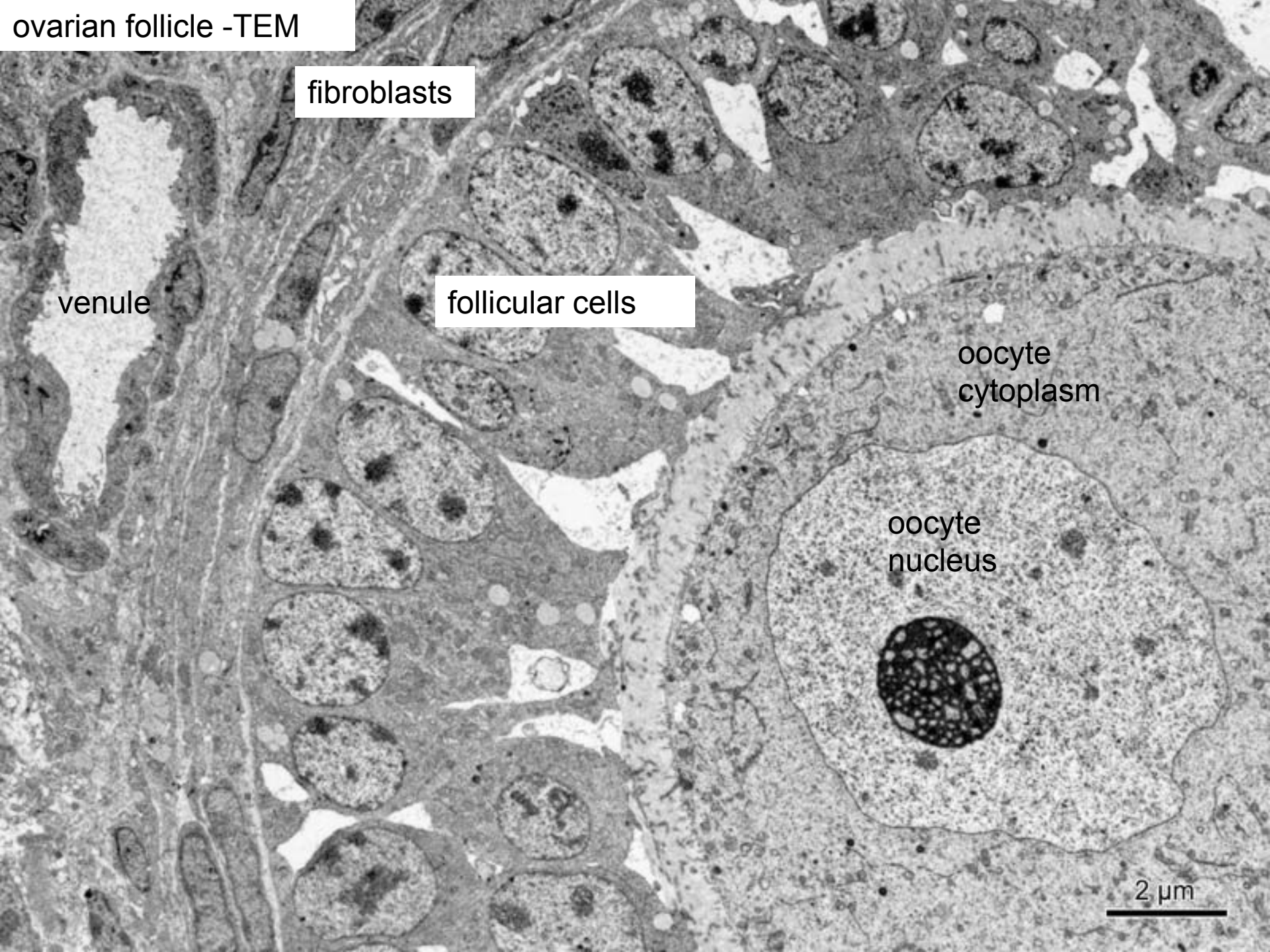
follicular cells

venule

oocyte
cytoplasm

oocyte
nucleus

2 μ m



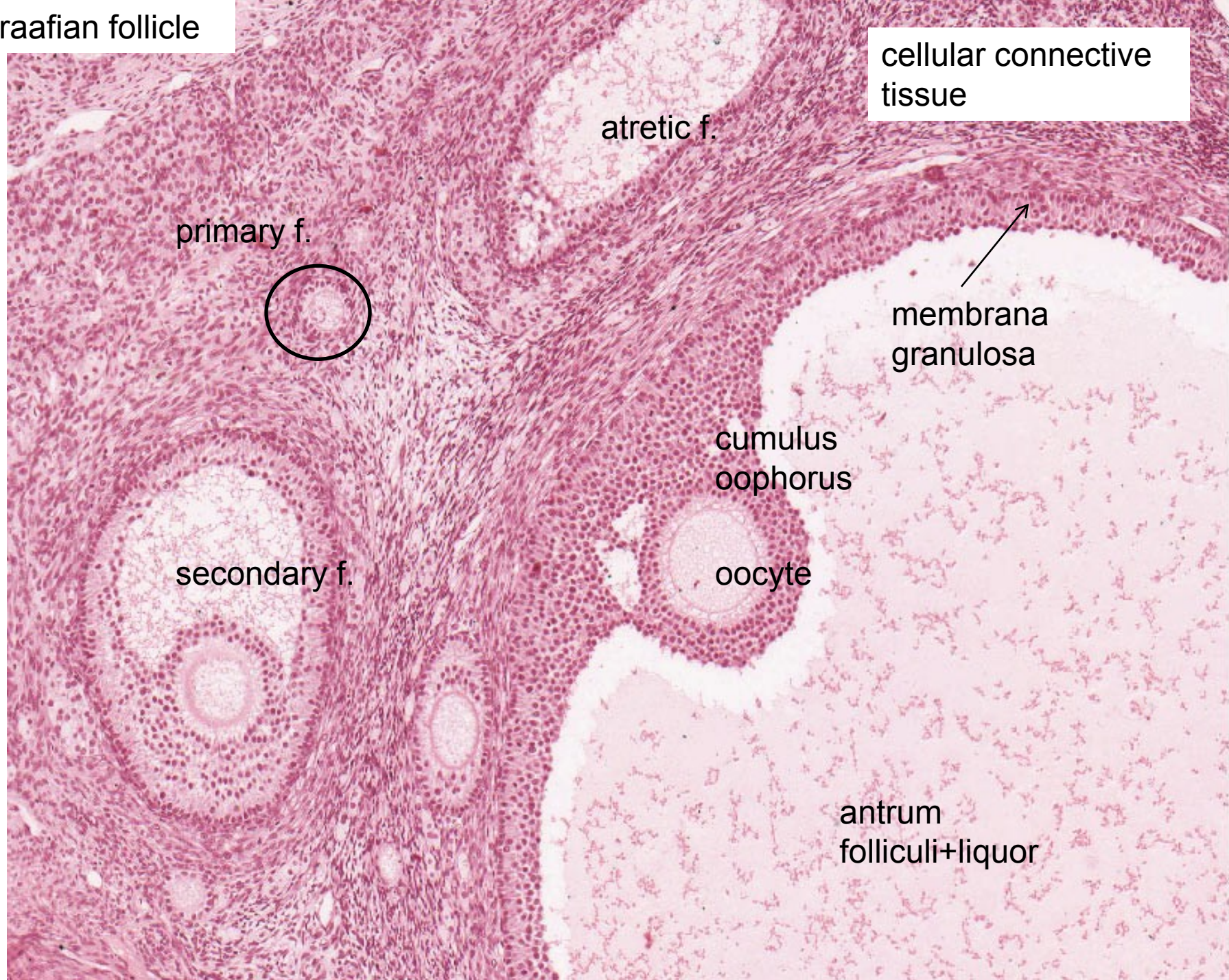
secondary follicle



theca f.
interna

membrana
granulosa

Graafian follicle



germinative epithelium

tunica albuginea

theca f. externa

theca f. interna

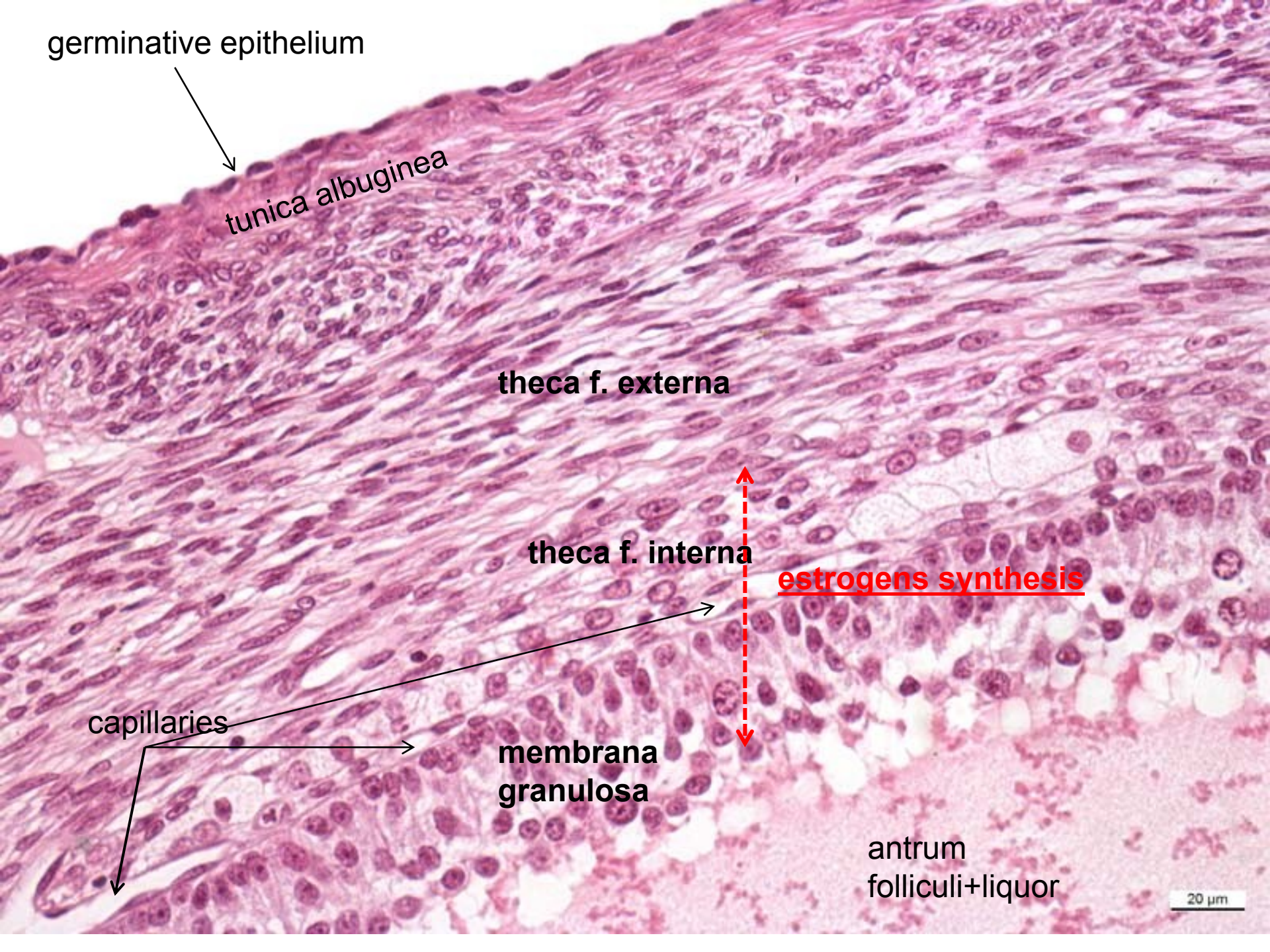
estrogens synthesis

capillaries

membrana
granulosa

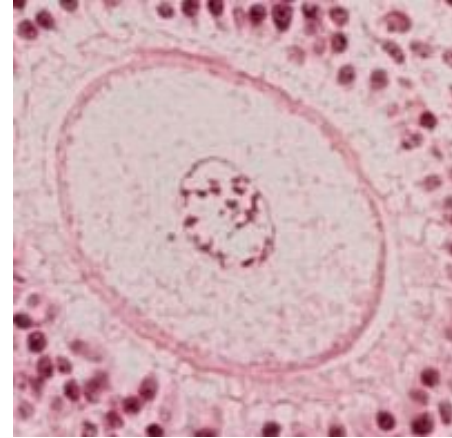
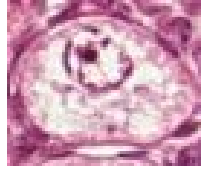
antrum
folliculi+liquor

20 μ m



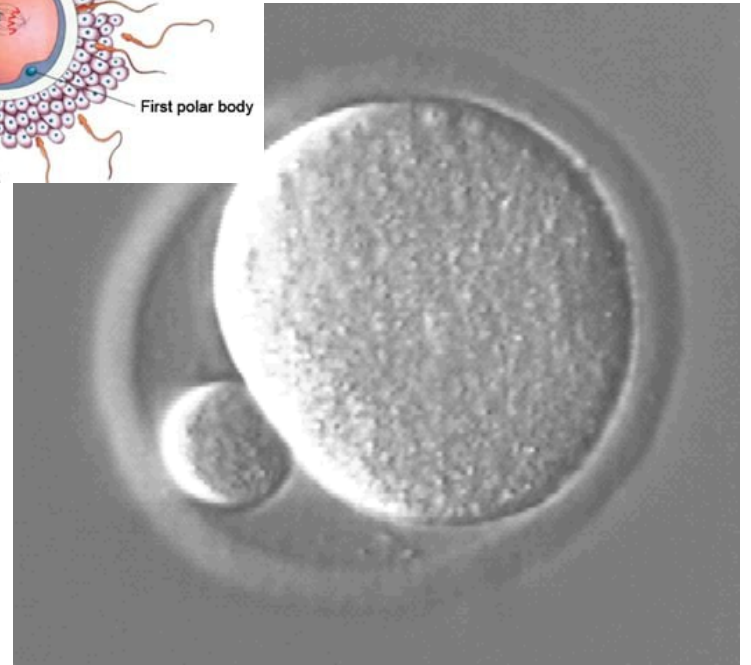
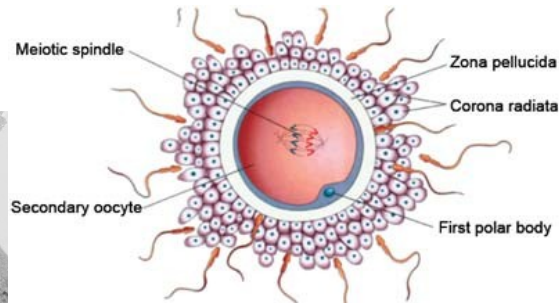
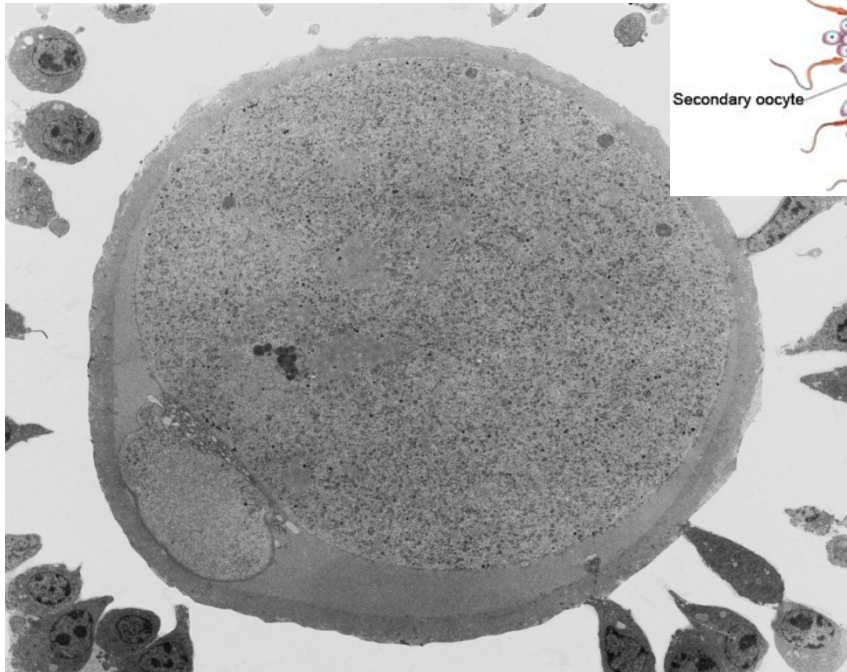
oocyte during 1st meiotic division

30 μm

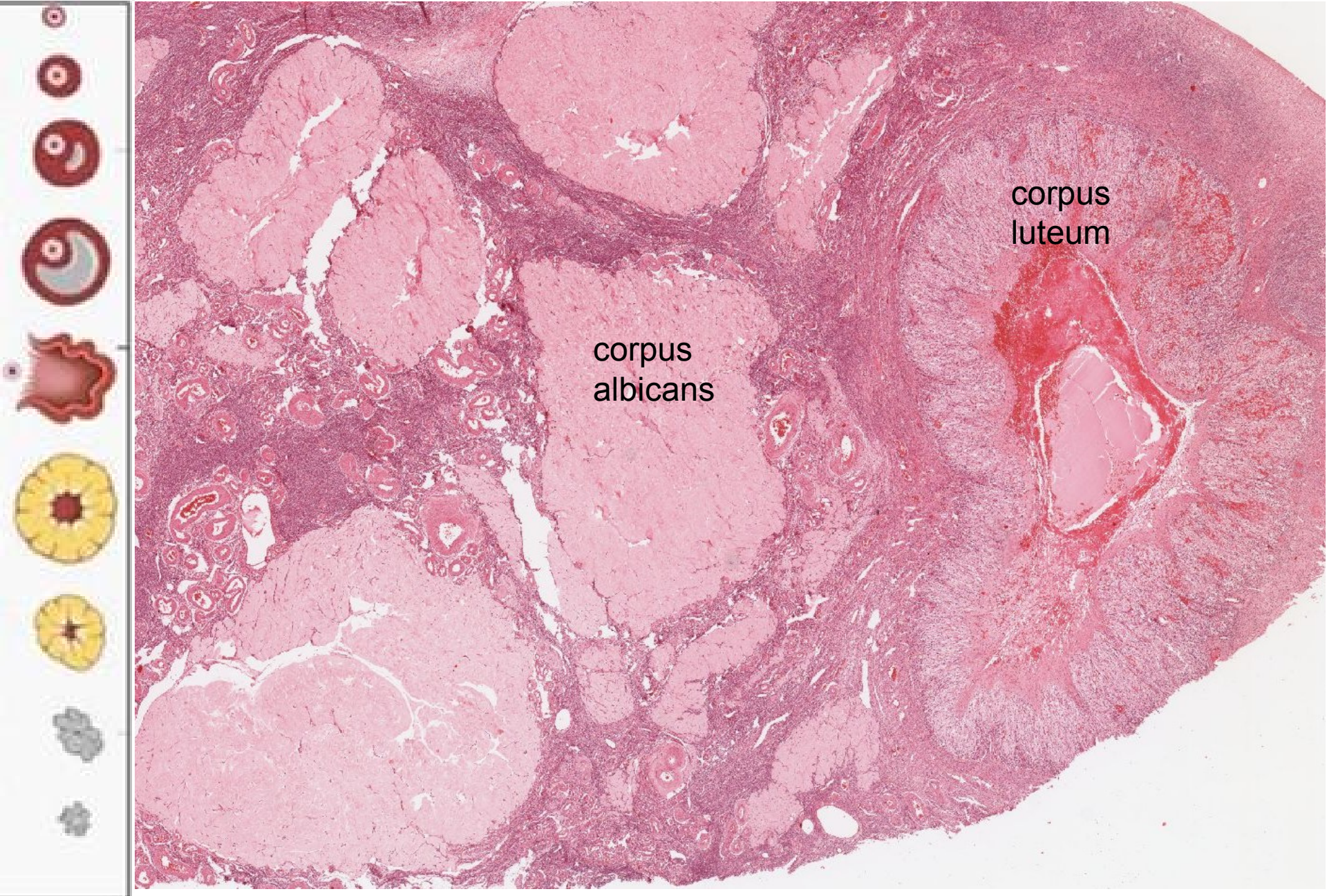


130 μm

oocyte during ovulation



ovary-corpora luteum



ovary-corpus luteum

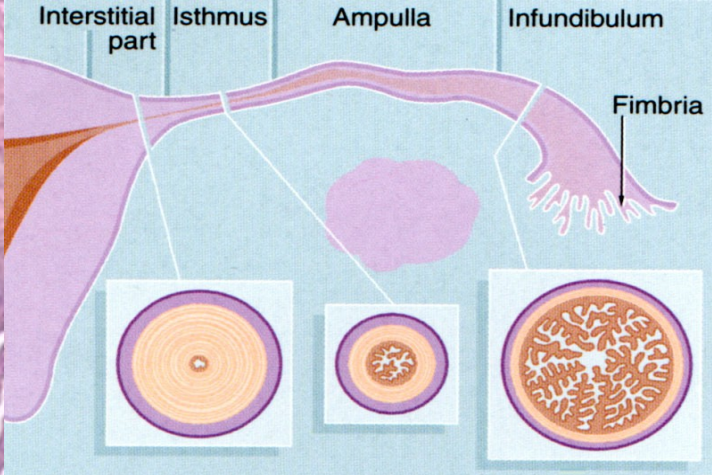
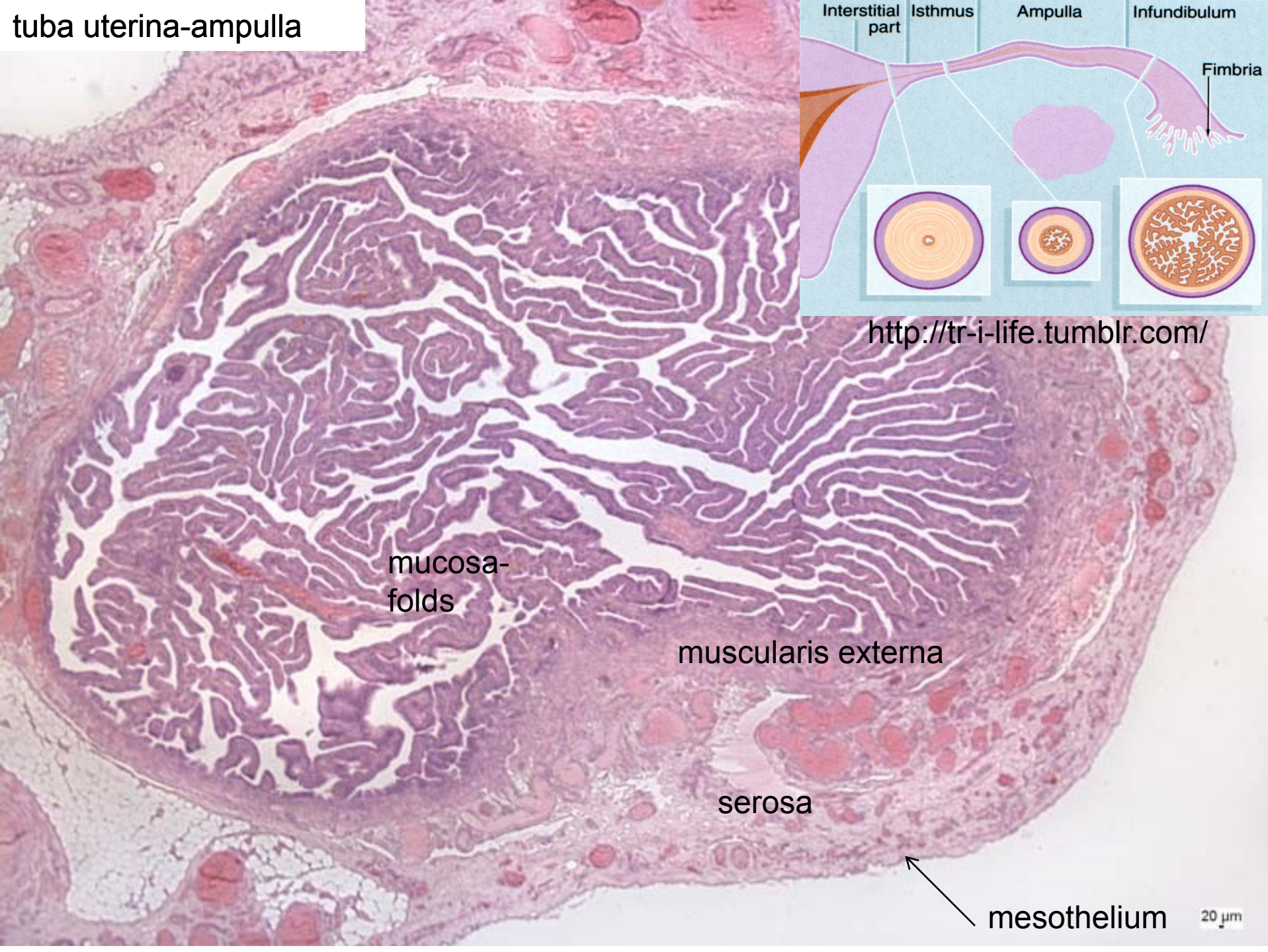


granulosa-lutein cells

blood coagulum

theca-lutein cells

tuba uterina-ampulla



<http://tr-i-life.tumblr.com/>

mucosa-folds

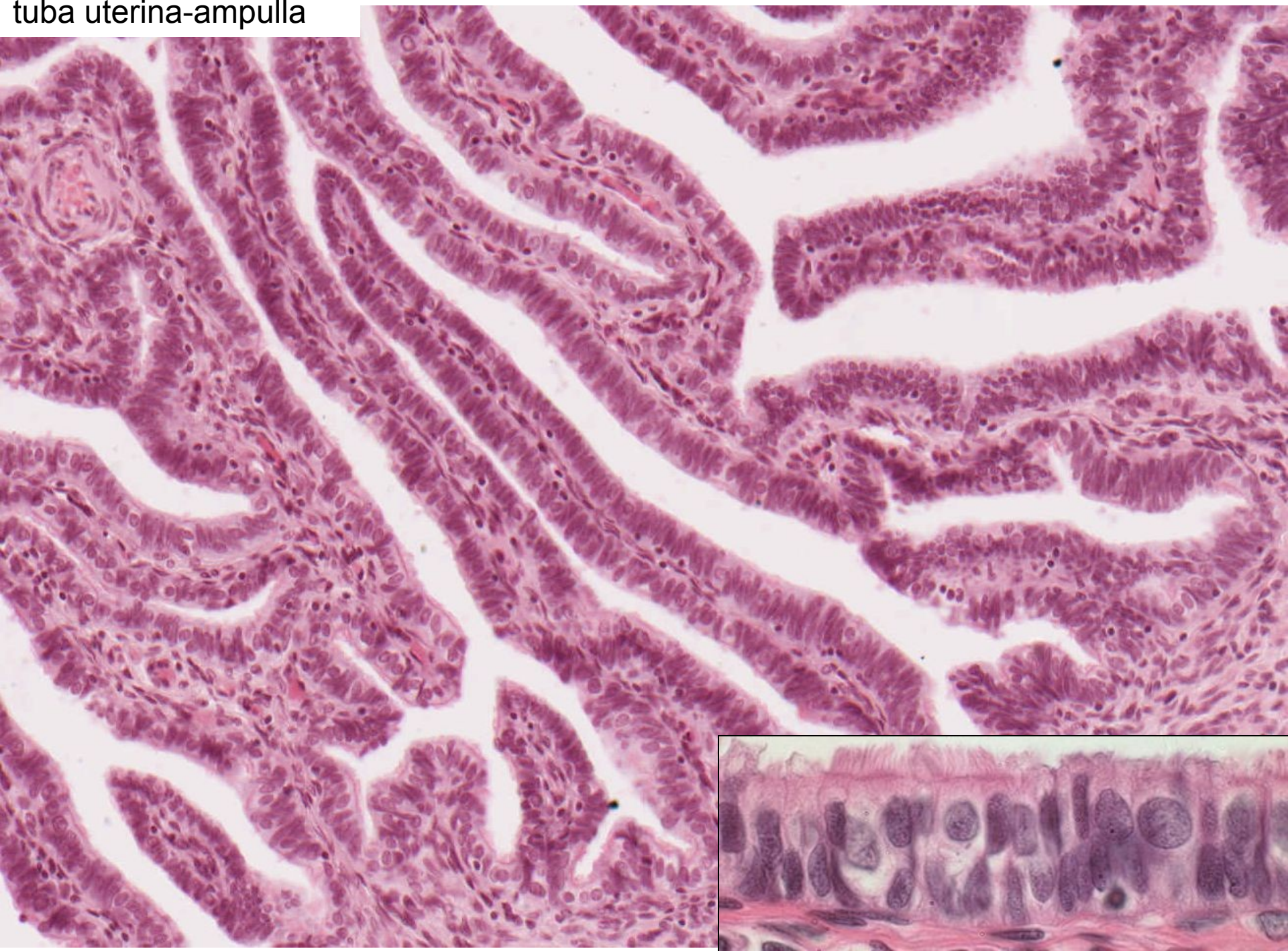
muscularis externa

serosa

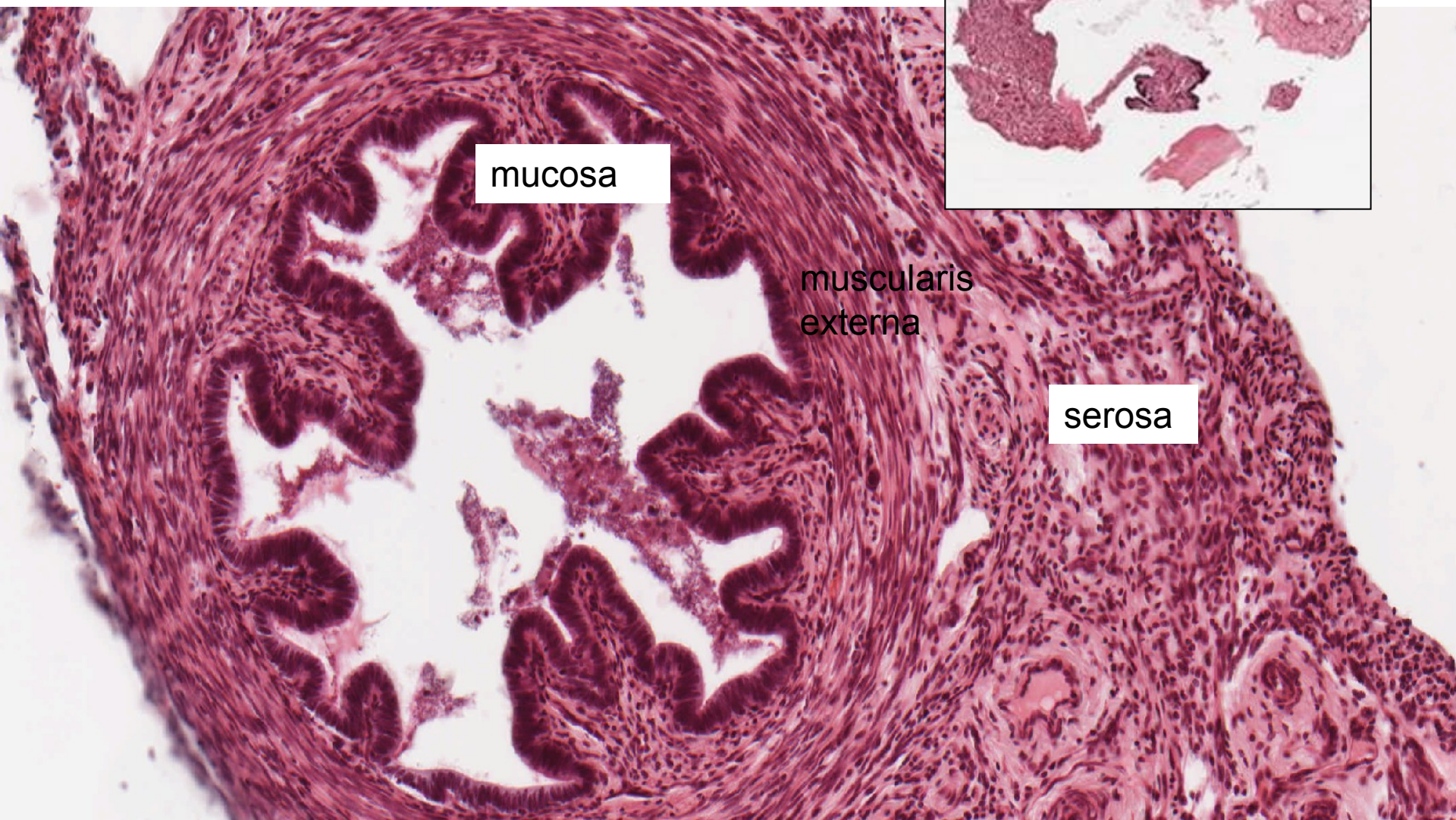
mesothelium

20 μm

tuba uterina-ampulla



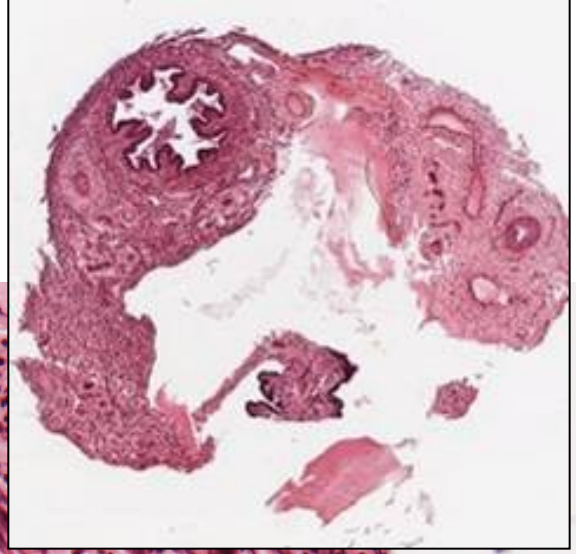
tuba uterina-isthmus



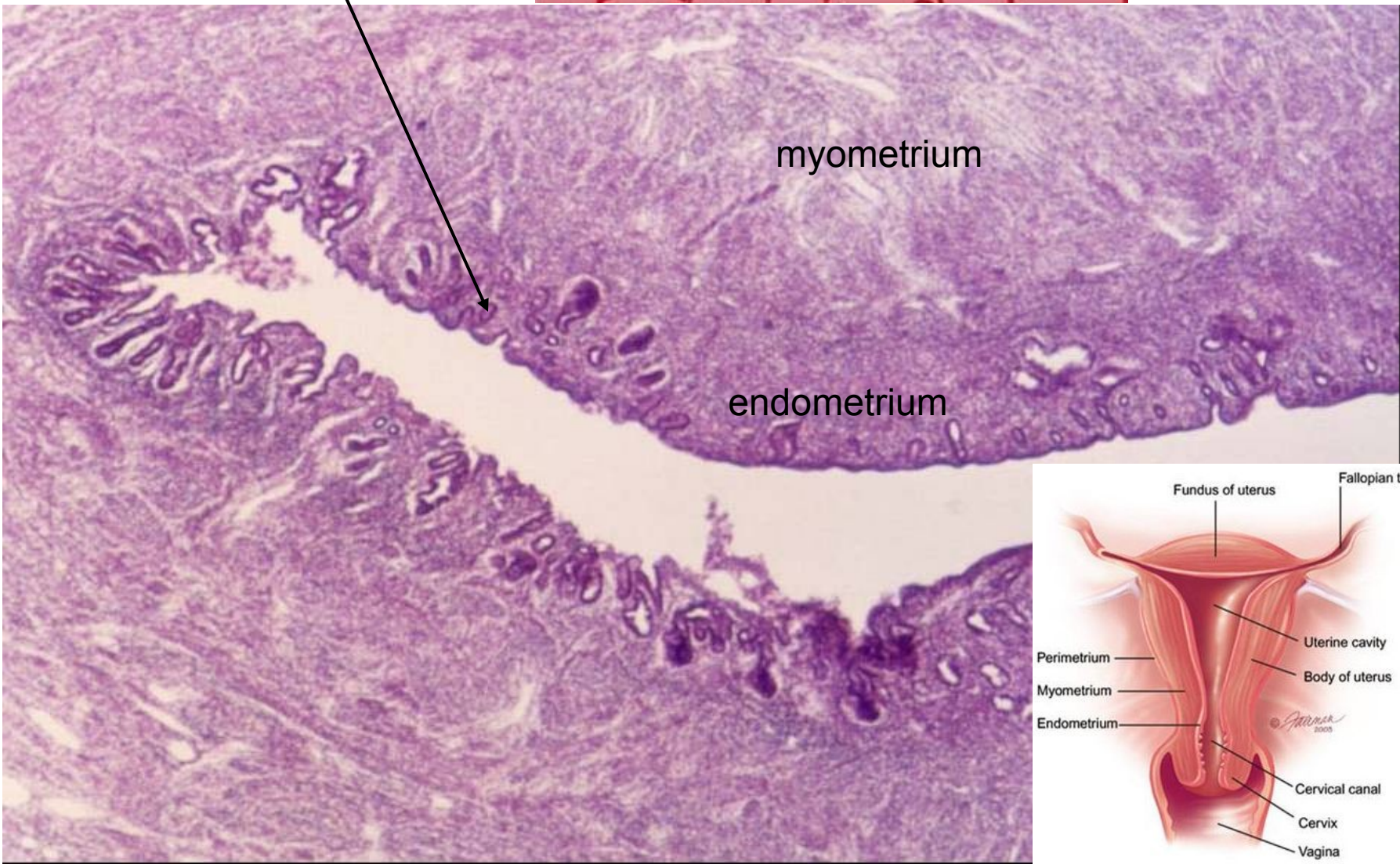
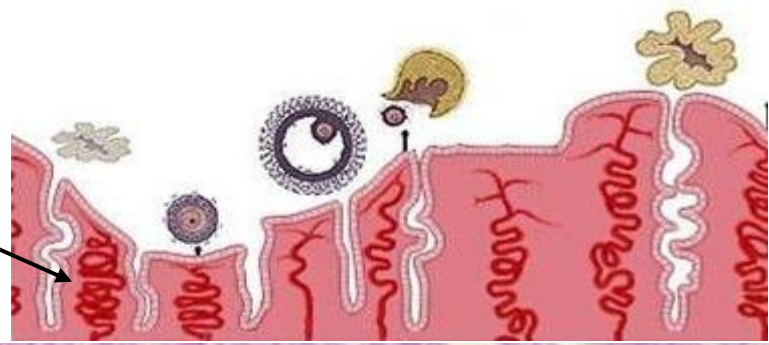
mucosa

muscularis
externa

serosa

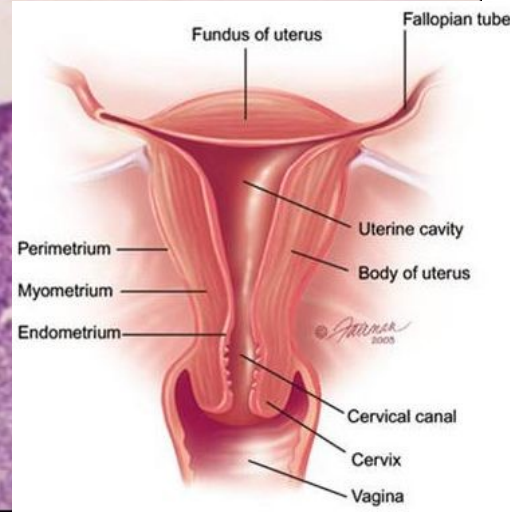


Ovarian and menstrual cycle



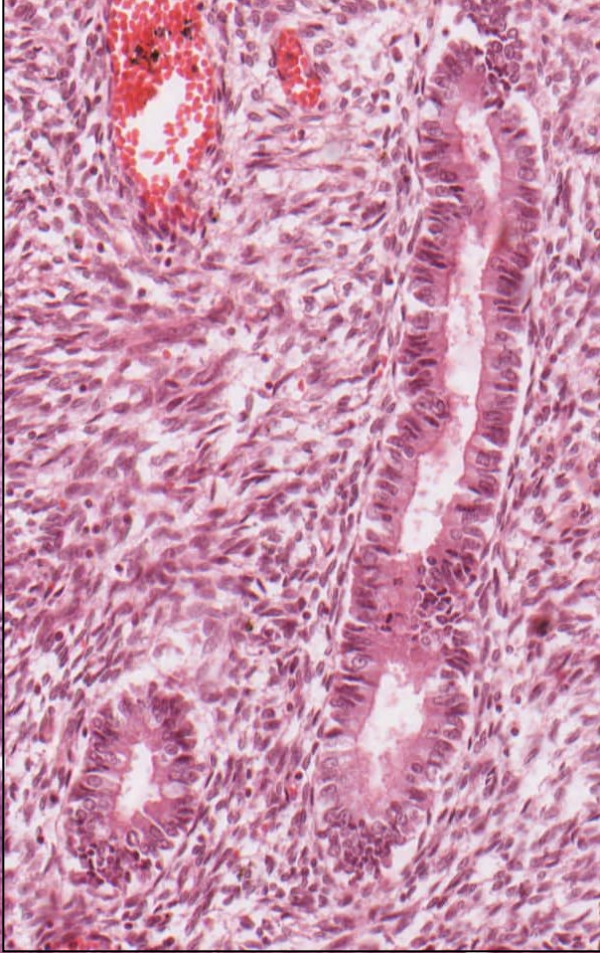
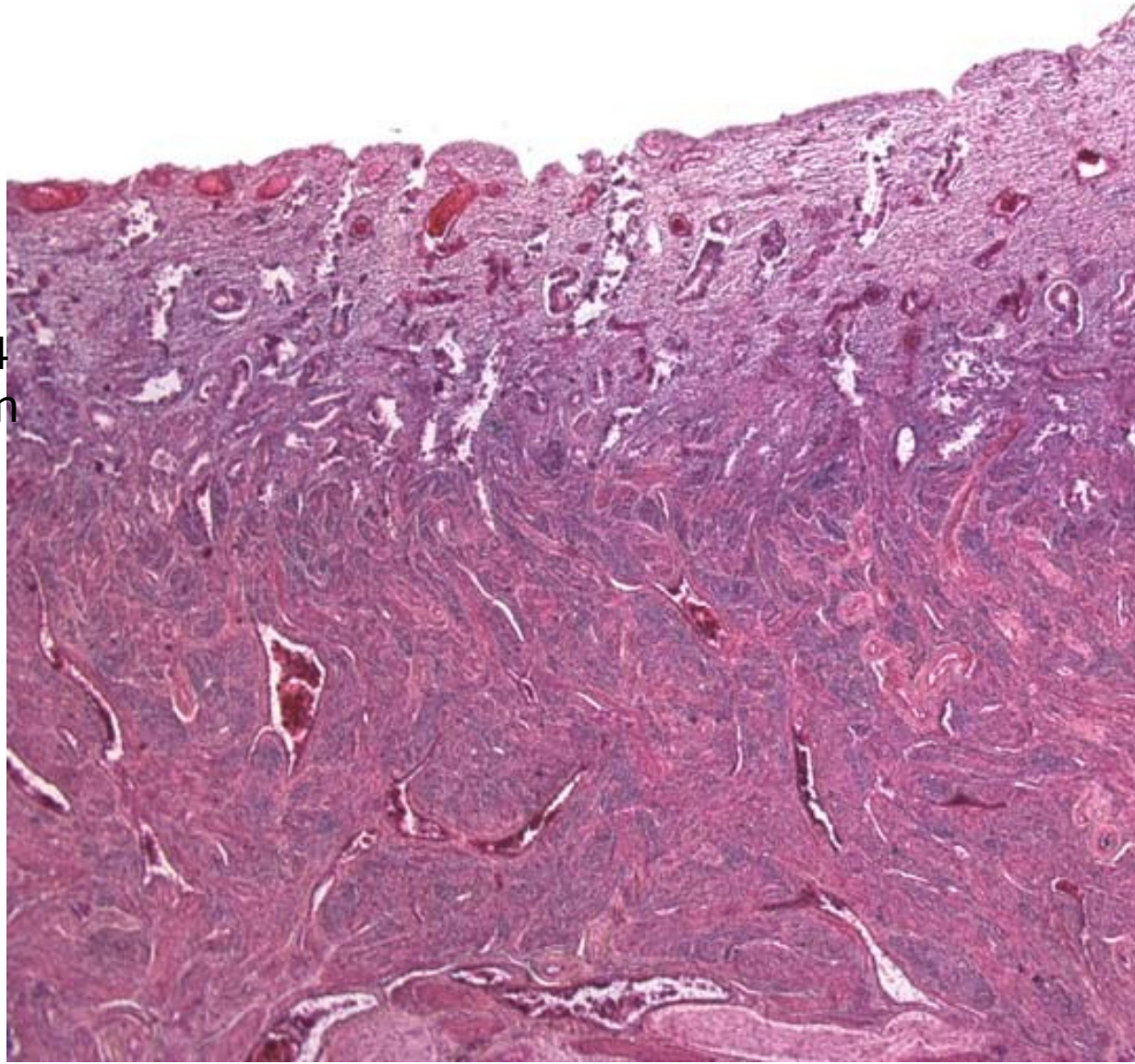
myometrium

endometrium



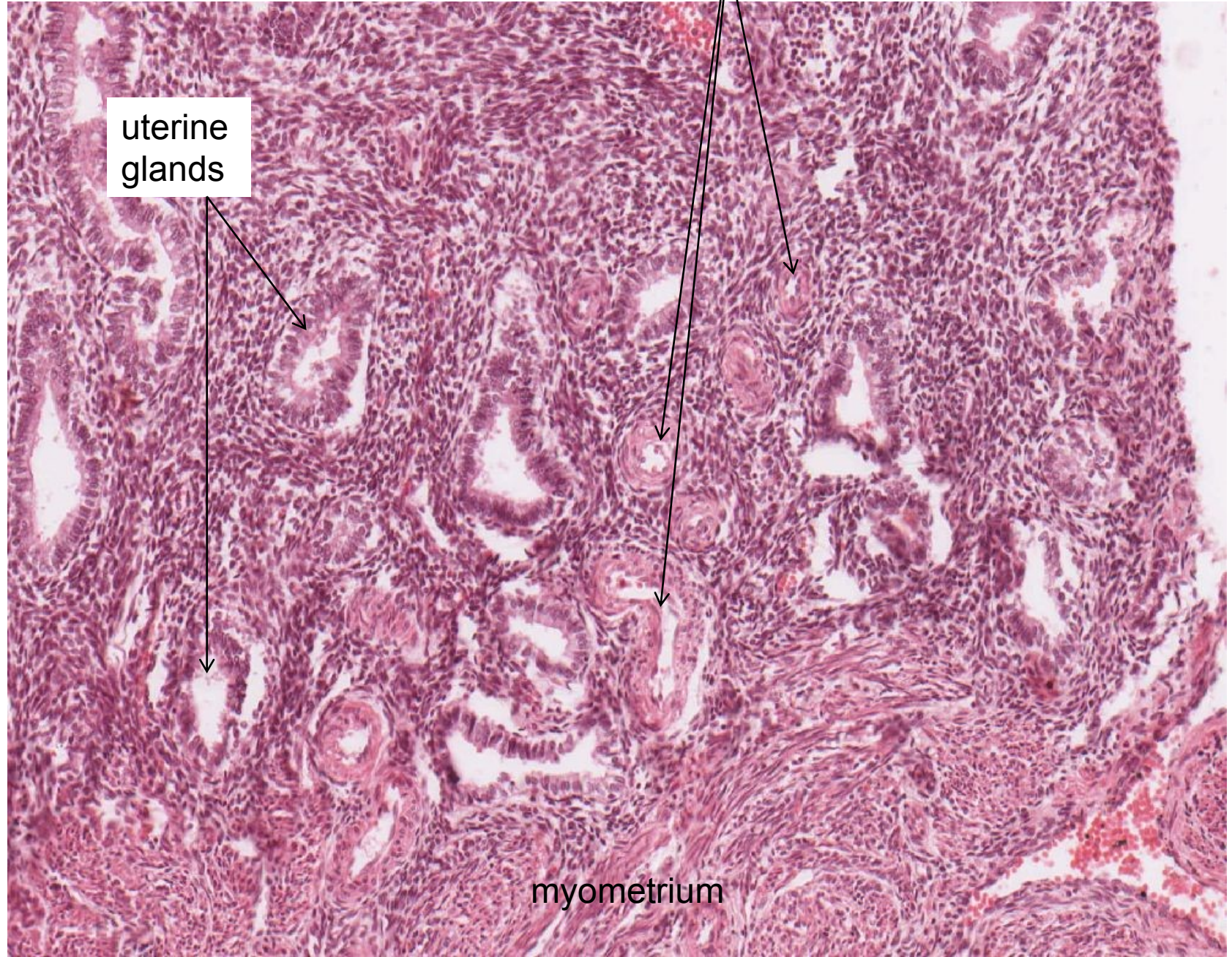
**Endometrium – proliferative phase
– glandulae uterinae**

3-4
mm



20 μ m

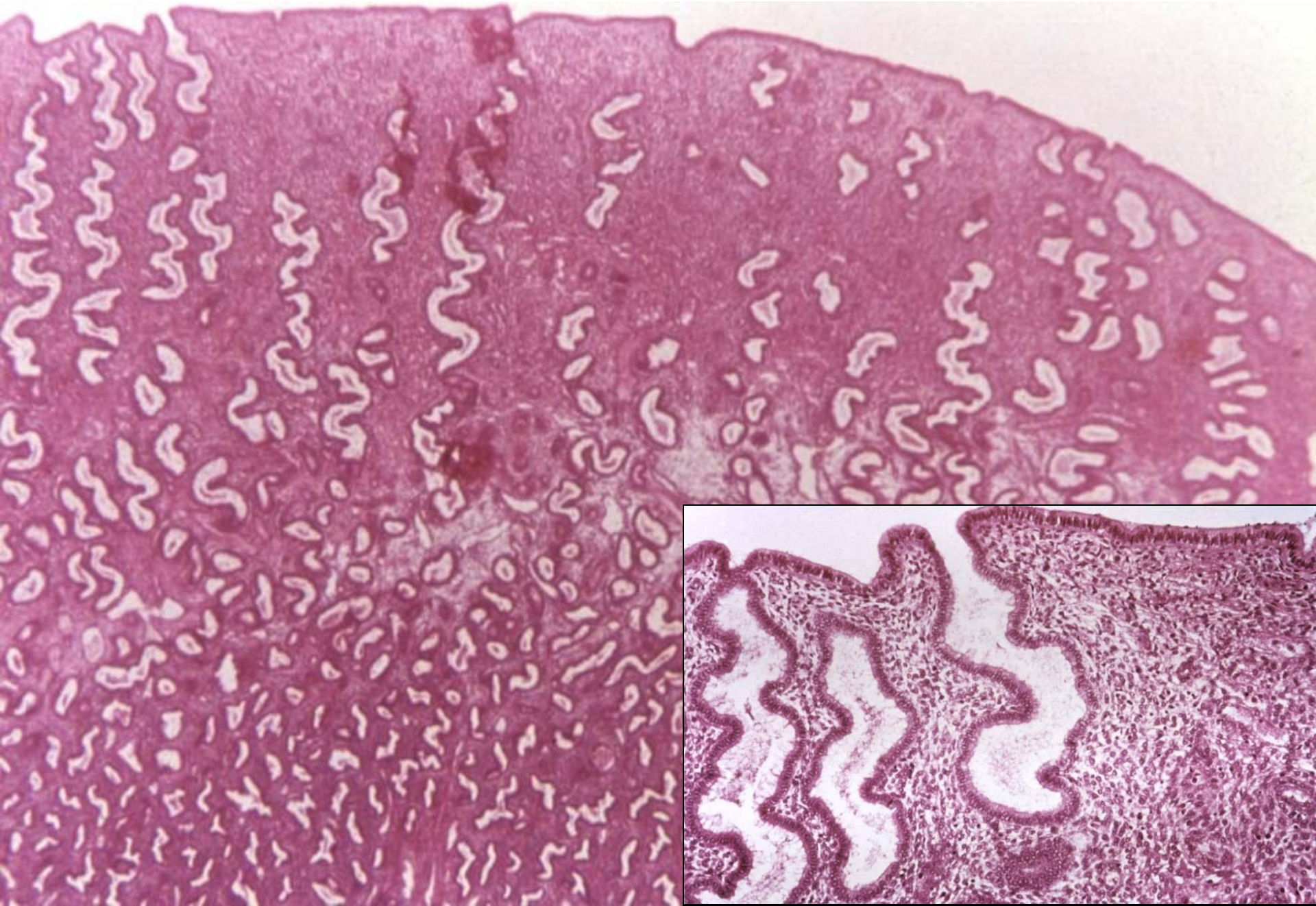
Endometrium – proliferative phase – arteriae helicinae, connective tissue stroma rich in cells



uterine
glands

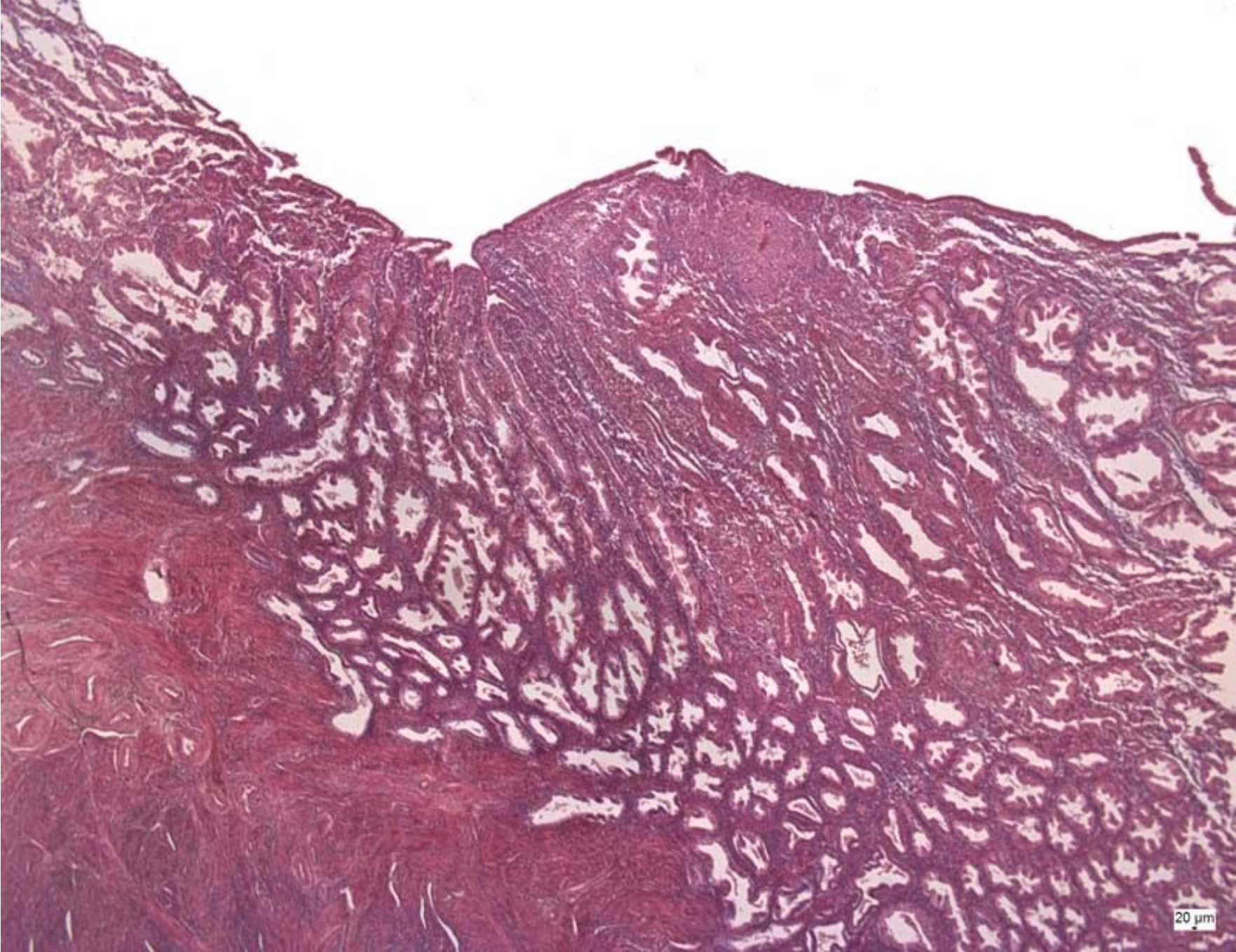
myometrium

Endometrium – early secretory phase



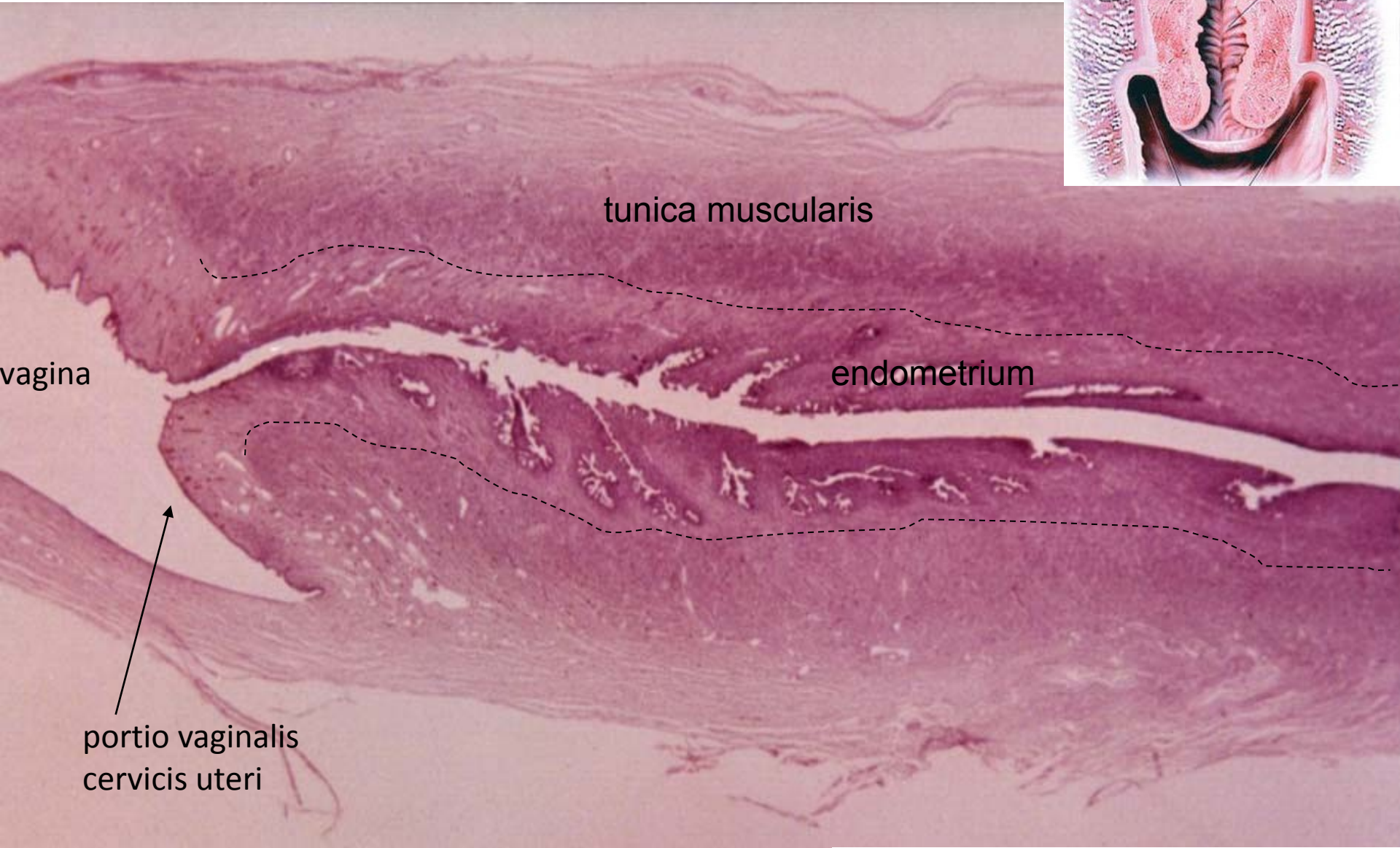
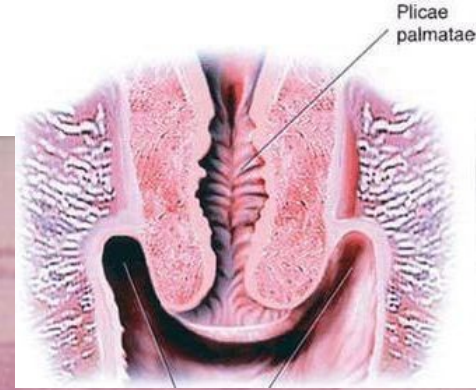
Endometrium – midsecretory phase

**5-7
mm**



20 μ m

Cervix uteri



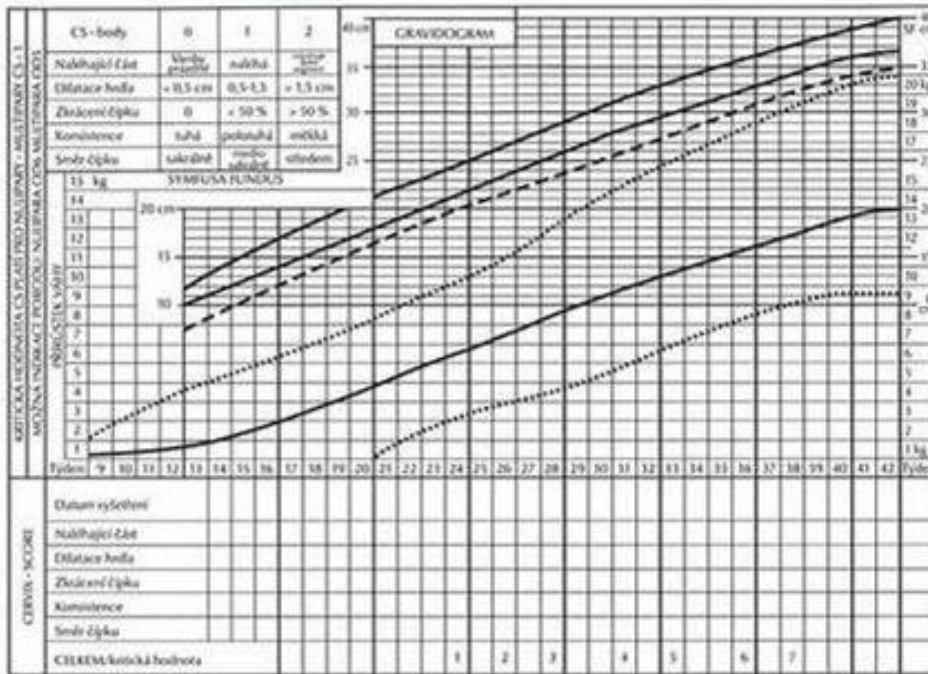
cervical glands – cervical mucus

Portio vaginalis cervicis uteri - squamocolumnar junction

simple columnar epi (endocervix)

stratified squamous epi (ectocervix)





Cervix uteri – specific consistence – „**cervix-skóre**“

Vnitřní porodnické vyšetření

Bishop (cervix)-skóre (CS) a jeho hodnocení (tab. 1)

Cervix-skóre body	0	1	2															
Naléhající část	klenby prázdné	naléhá (klenba plná nevyvinutá)	rozvinuje dolní děložní segment (klenba plná vyvinutá)															
Dilatace hrdla	< 0,5 cm	0,5 – 1,5 cm	> 1,5 cm															
Zkrácení čípku	0	< 50%	> 50%															
Konzistence čípku	tuhá	polotuhá	měkká															
Lokalizace čípku	sakrálně	mediosakrálně	ventrálně (středem)															
Hodnocení:																		
Týden gravidity	8-23	24	25	26	27	28	29	30	31	32	33	34	35	36	37	38	39	> 39
Kritická hodnota		1	2	3	4	5	6	7	8	9	10	11	12	13	14	15	16	17

Kritická hodnota CS platí pro nulipary, pro multipary platí CS +1



FEMALE REPRODUCTIVE SYSTEM I

Slides:

- 42. Ovarium
- 43. Ovarium – cat
- 44. Corpus luteum
- 45. Tuba uterina – ampulla
- 46. Tuba uterina – isthmus
- 47. Uterus – proliferative phase
- 48. Uterus – secretory phase

Atlas EM:

Ovarian follicle (1)

Oviduct - epithelium (26, 29, 30)