

Digestive system 1

Pictures from MedAtlas version 3,0

Labium oris

ventral (skin) side

transitional zone
(red of lip)



gll. labiales

dorsal (mucosal) side

m. orbicularis oris

20 μ m

Labium oris – ventral side

Labium oris – ventrální strana, (HE), objektiv 10×

skin side of lip

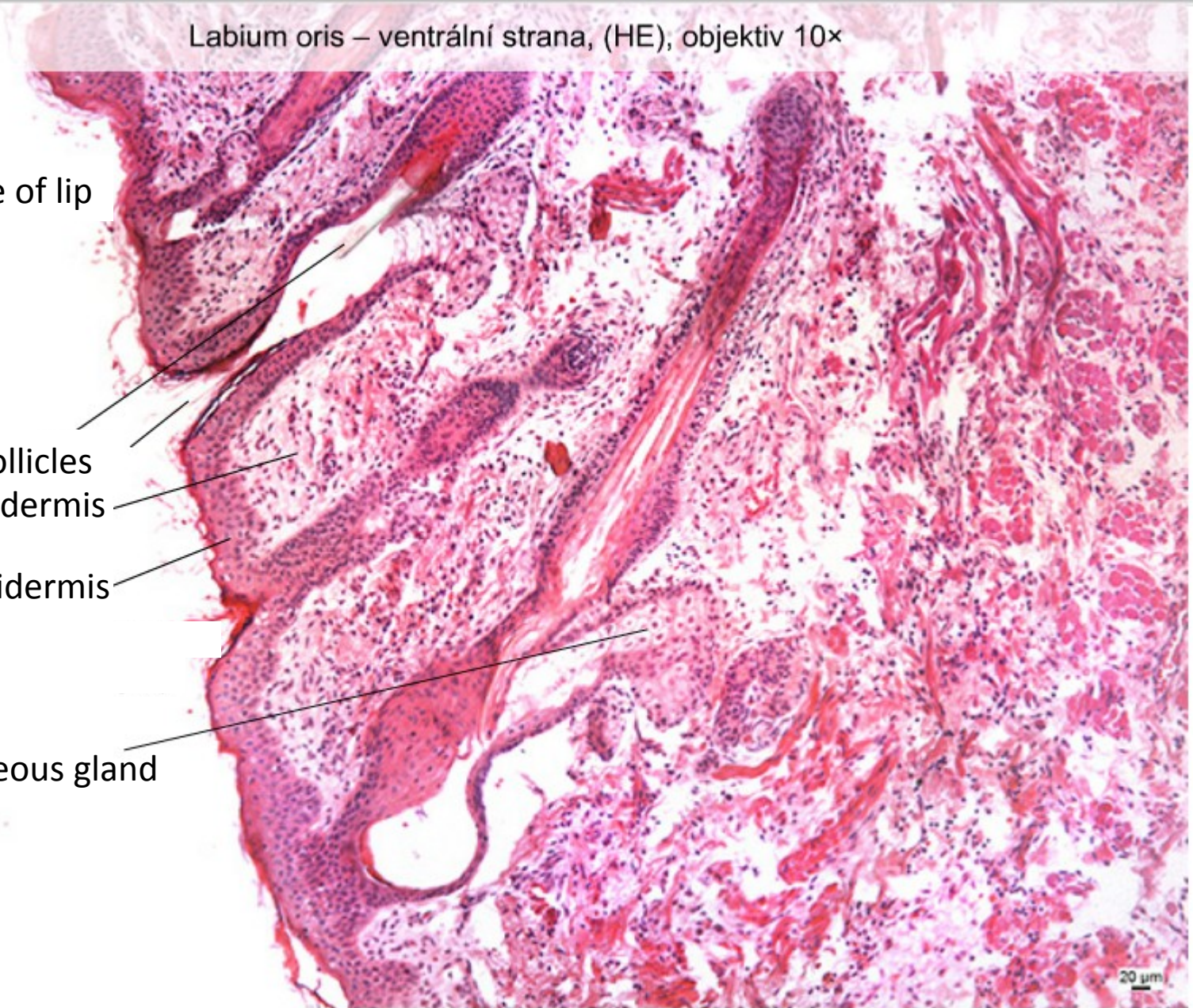
hair follicles

skin – dermis

– epidermis

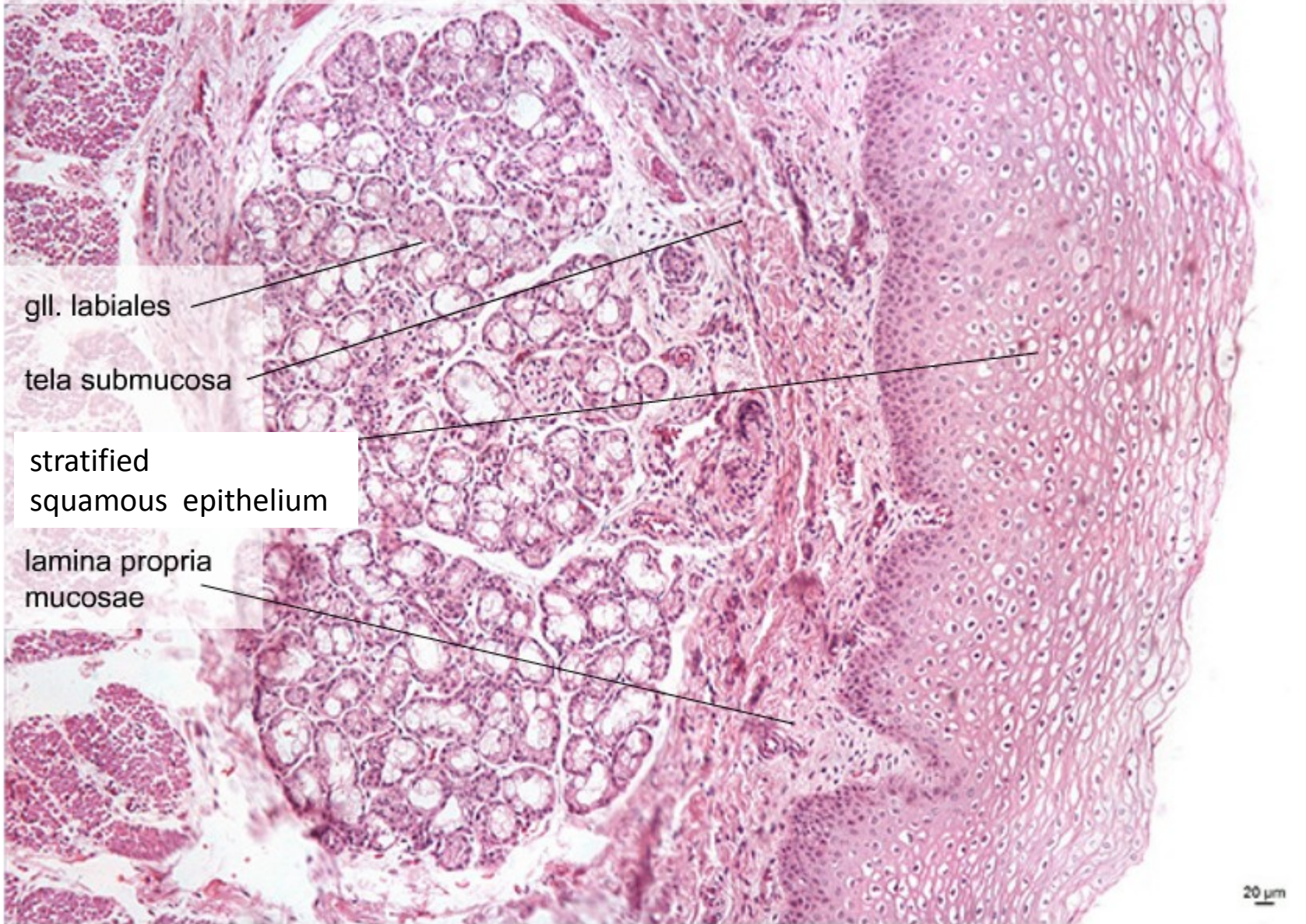
sebaceous gland

20 μm



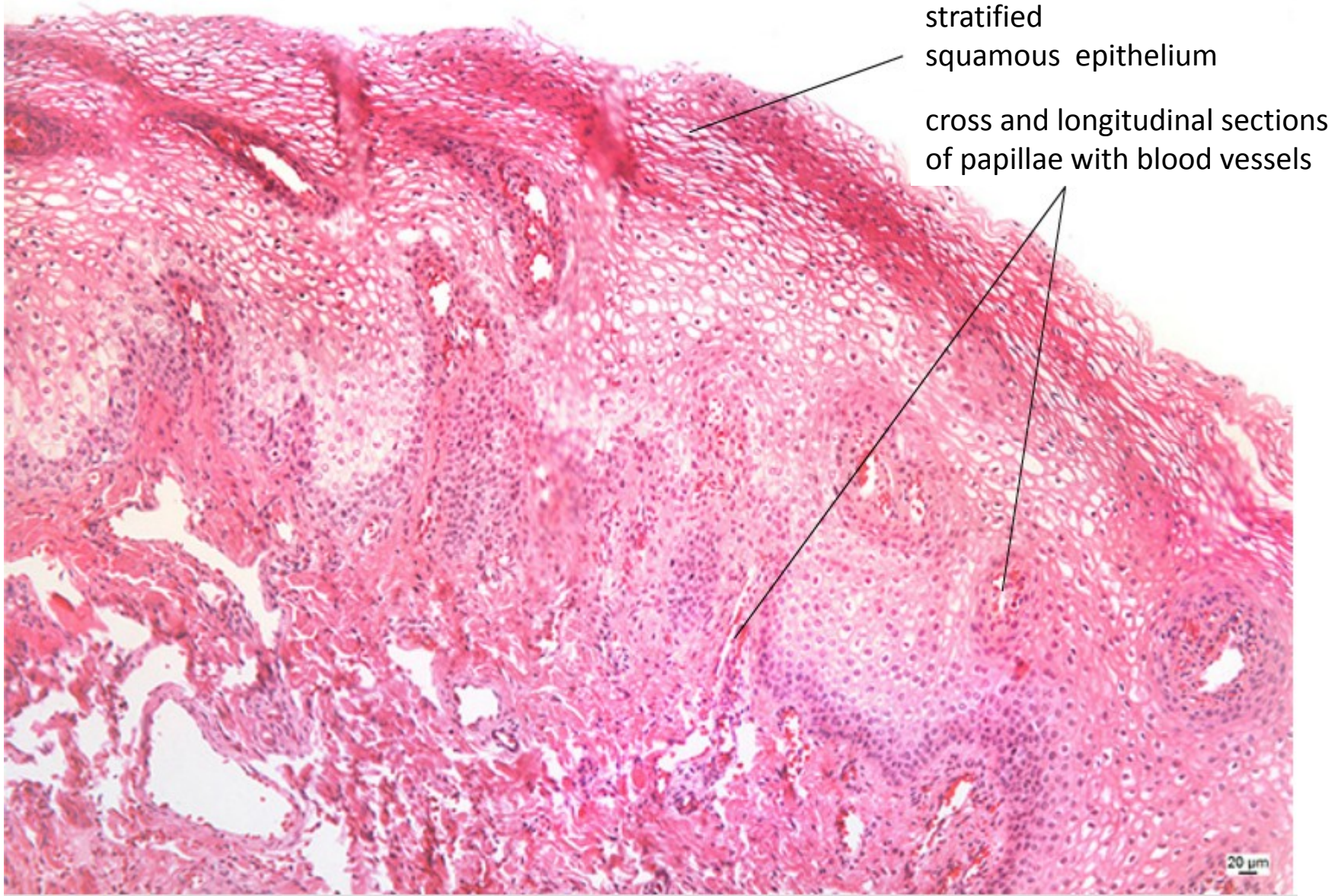
Labium oris – dorsal side

Labium oris – dorsální strana, (HE), objektiv 10×



Labium oris – transitional (red) zone

Labium oris – červen rtu, (HE), objektiv 10×



Apex linguae – dorsum, (HE), objektiv 2,5×

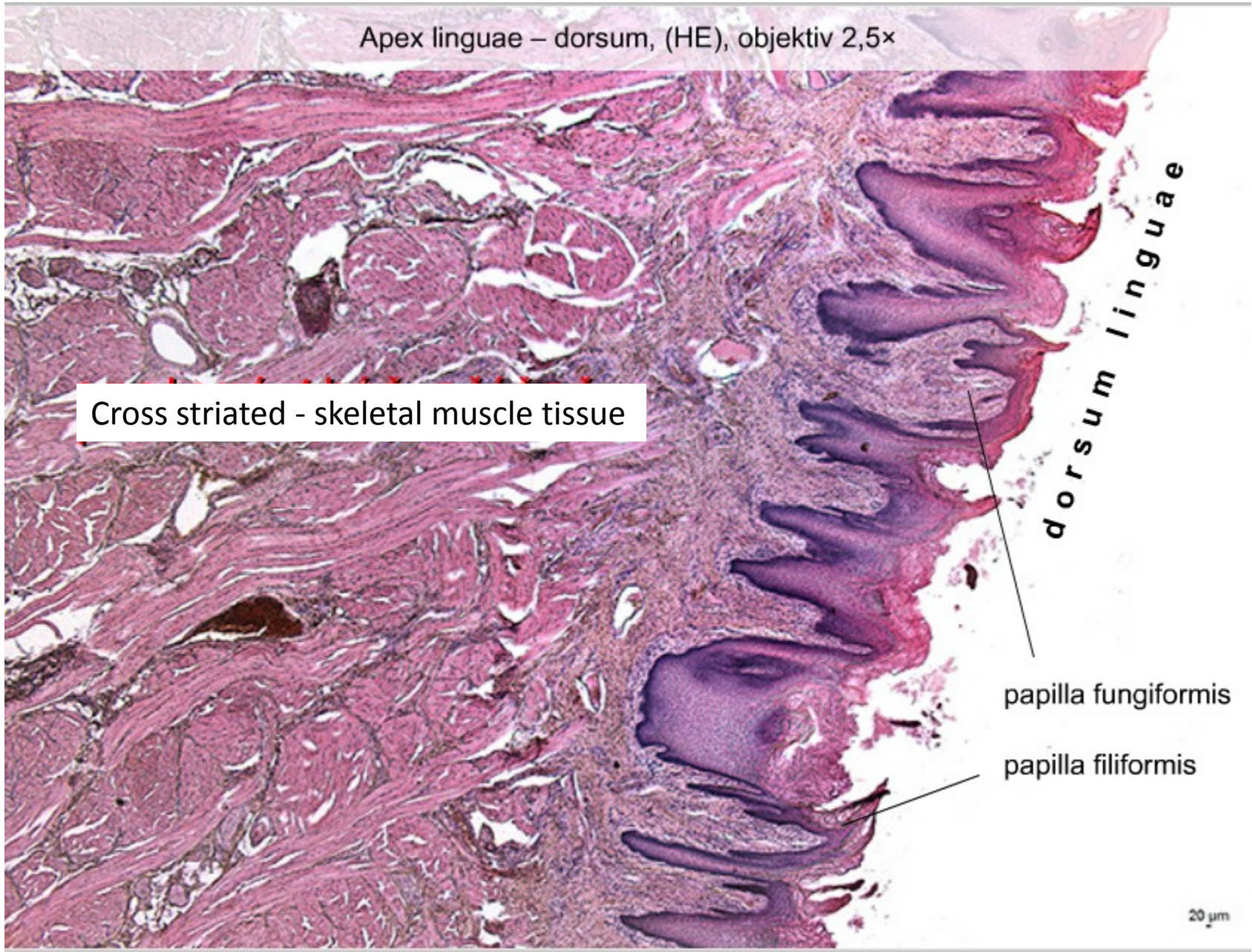
Cross striated - skeletal muscle tissue

dorsum linguae

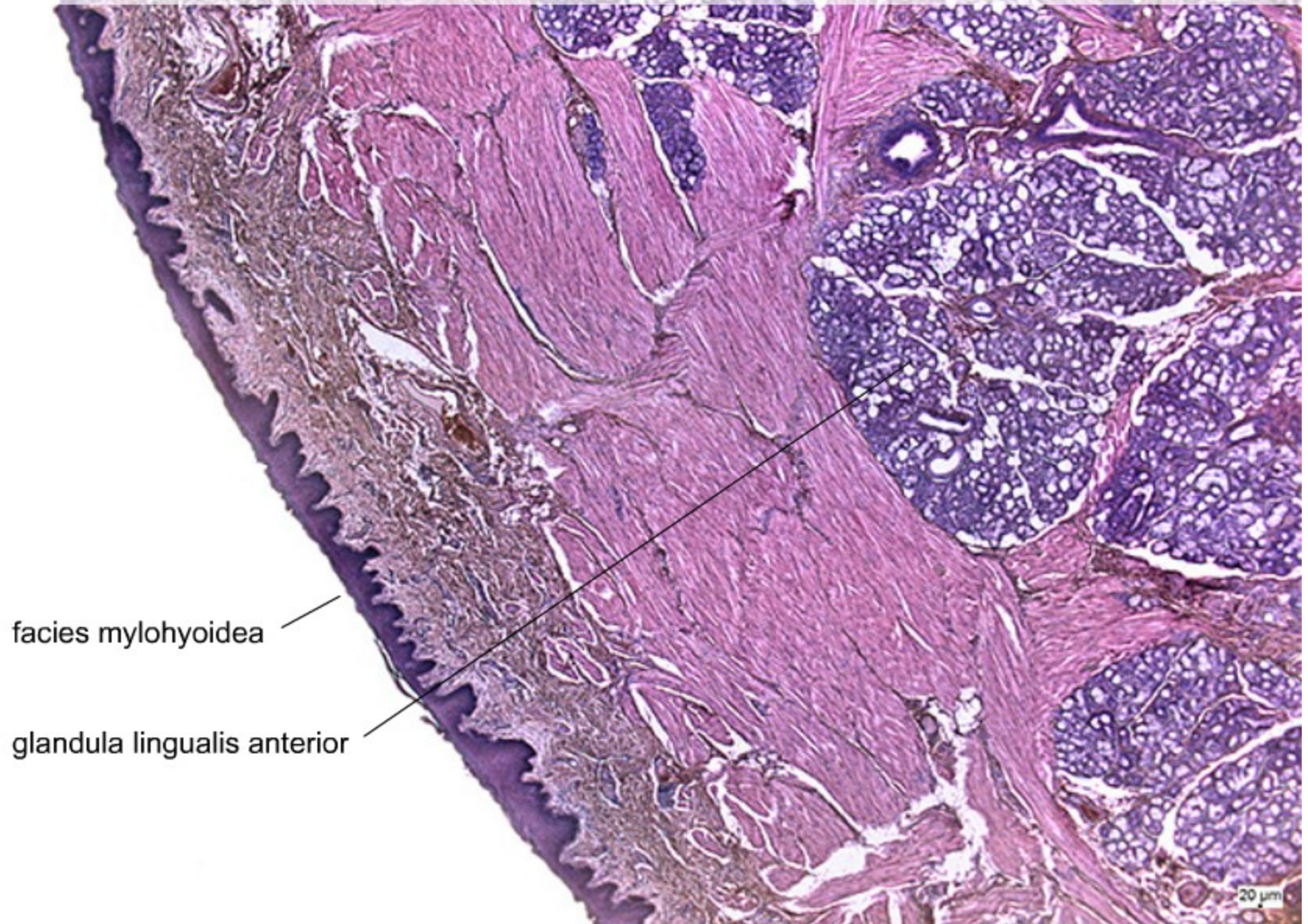
papilla fungiformis

papilla filiformis

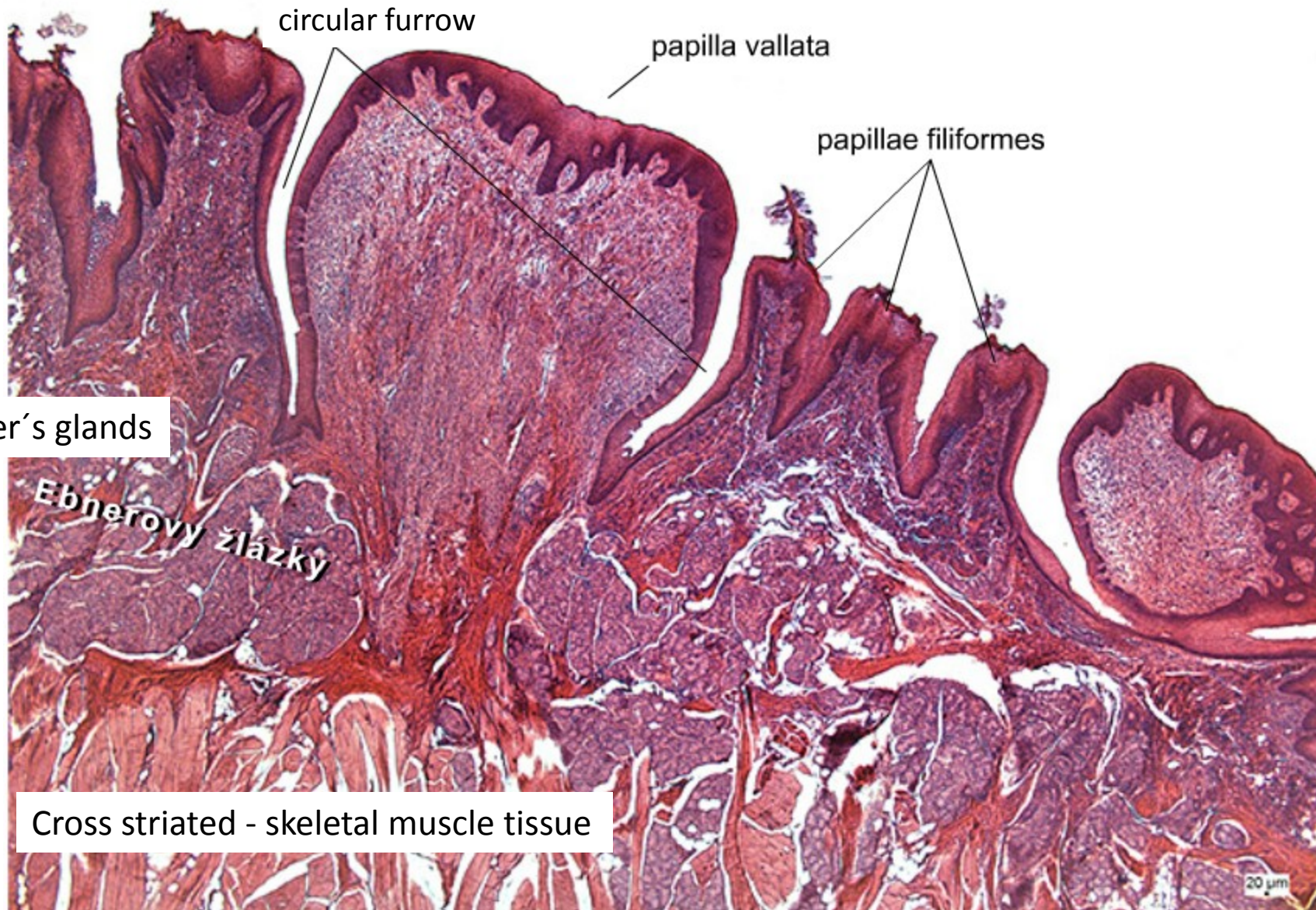
20 μ m



Apex linguae – facies mylohyoidea, (HE), objektiv 2,5x



Papilla vallata – přehled I, (HE), objektiv 2,5×



circular furrow

papilla vallata

papillae filiformes

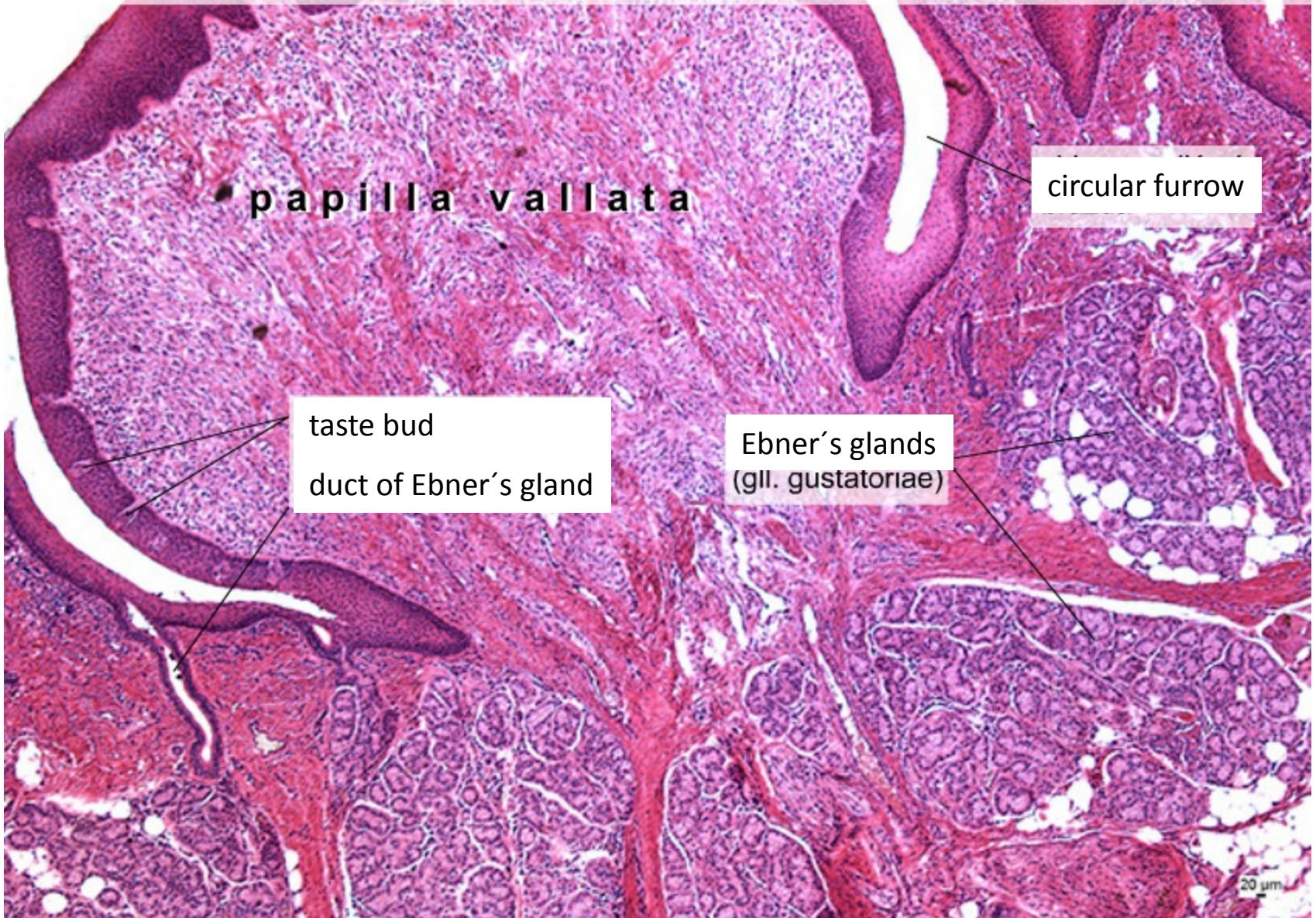
Ebner's glands

Ebnerovy žlázy

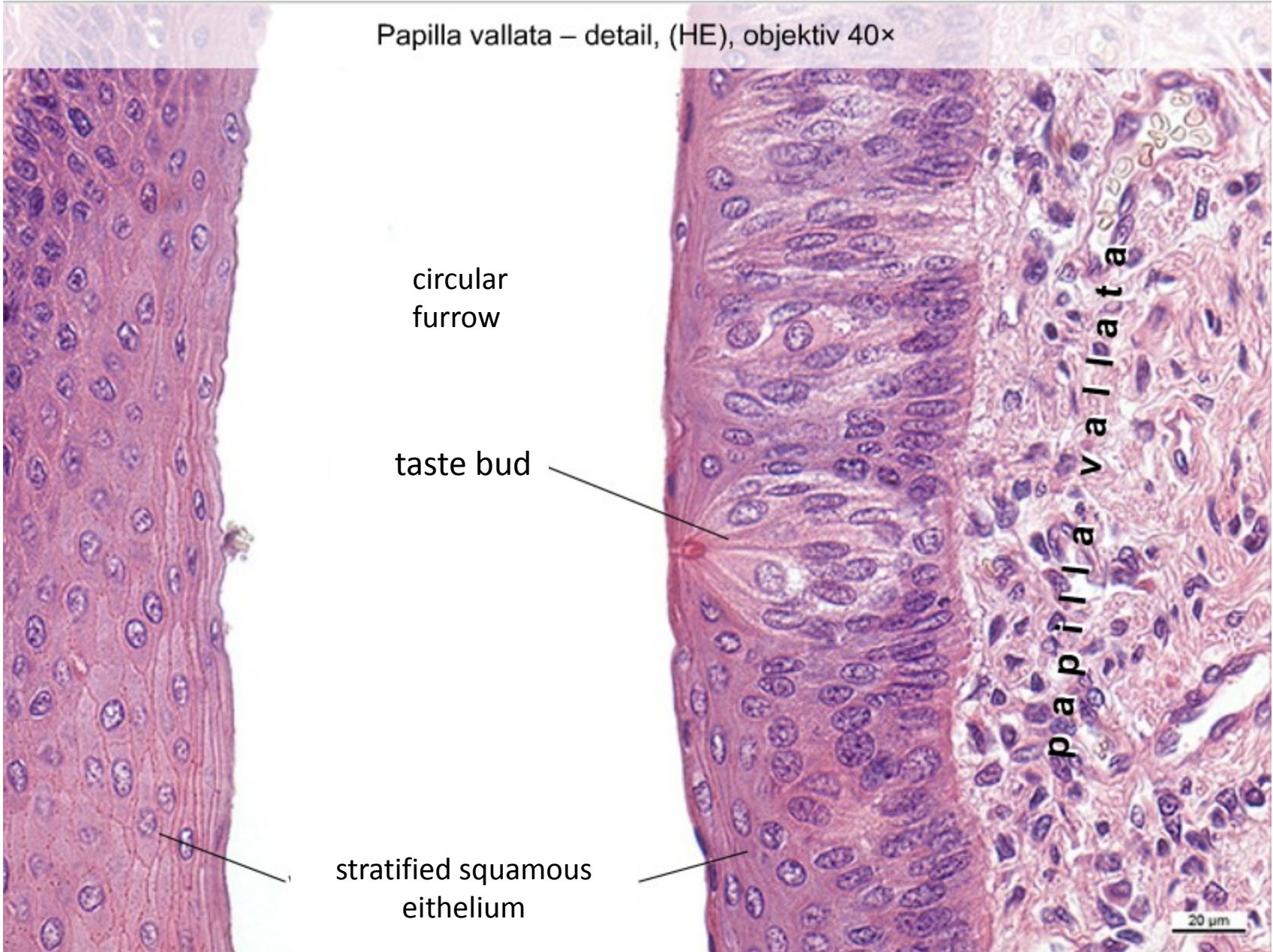
Cross striated - skeletal muscle tissue

20 μm

Papilla vallata – přehled II, (HE), objektiv 5×

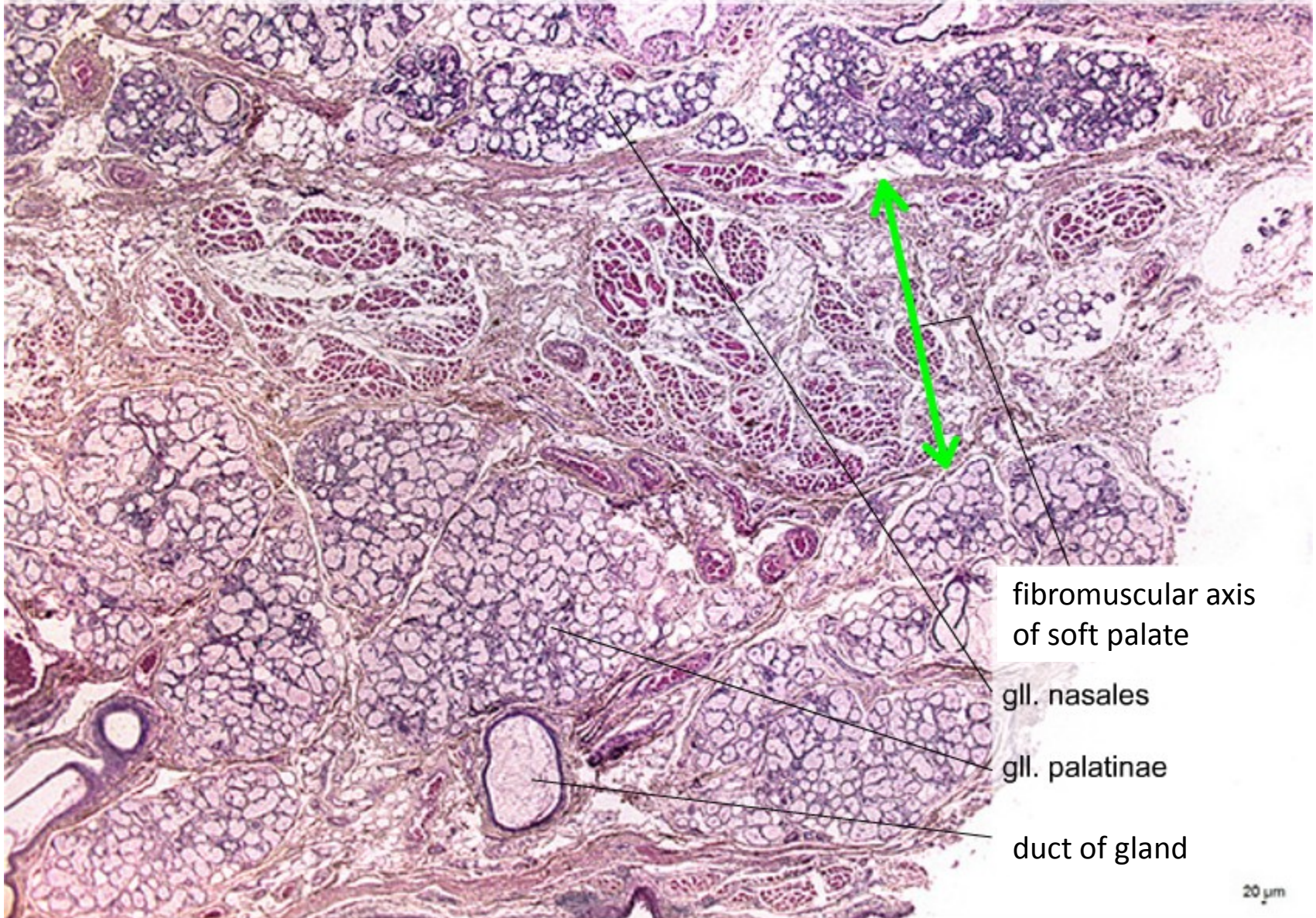


Papilla vallata – detail, (HE), objektiv 40×



Palatum molle

Palatum molle – přehled, (HE), objektiv 2,5x



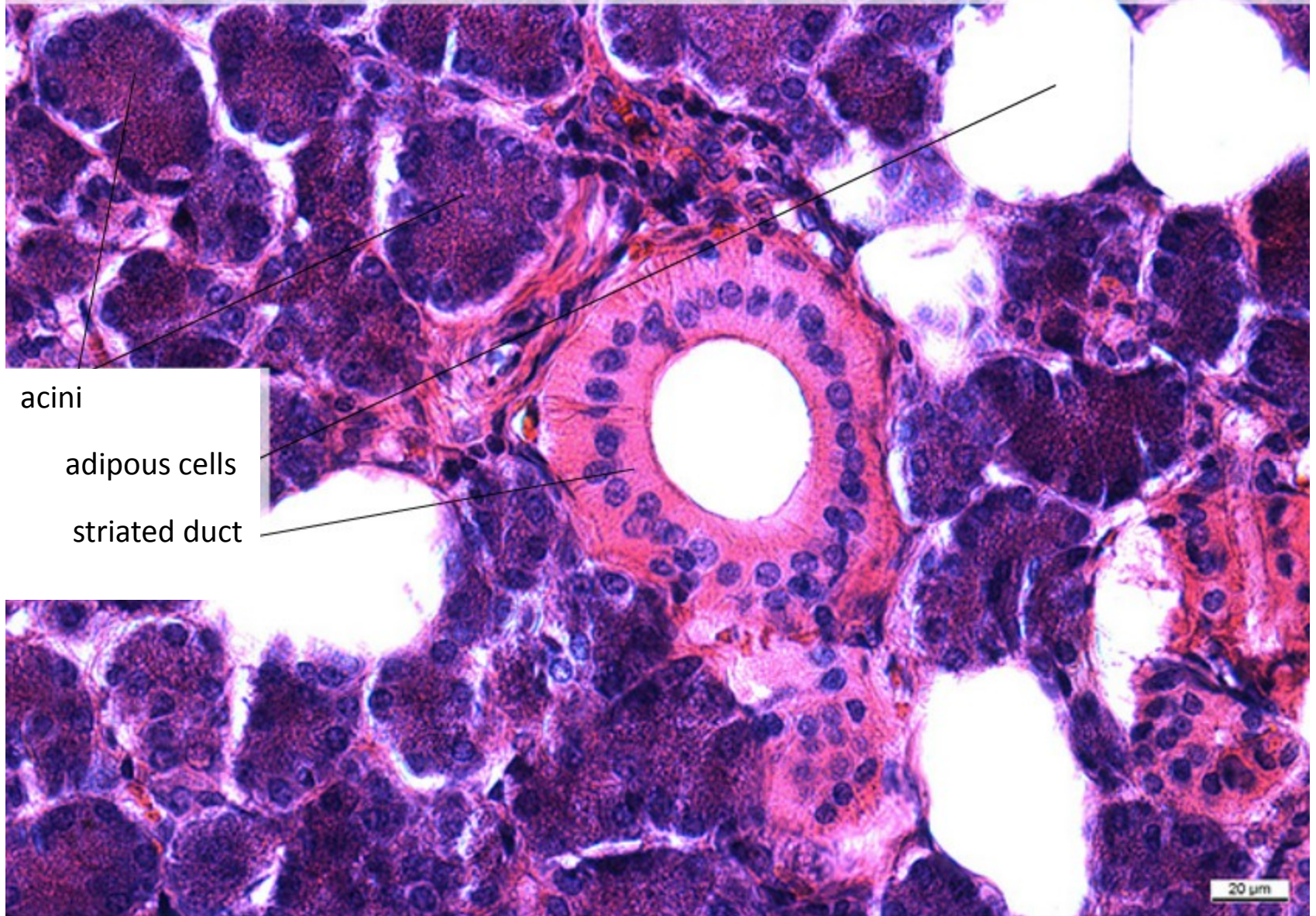
fibromuscular axis
of soft palate

gll. nasales

gll. palatinae

duct of gland

Gl. parotis – detail, (HE), objektiv 40×



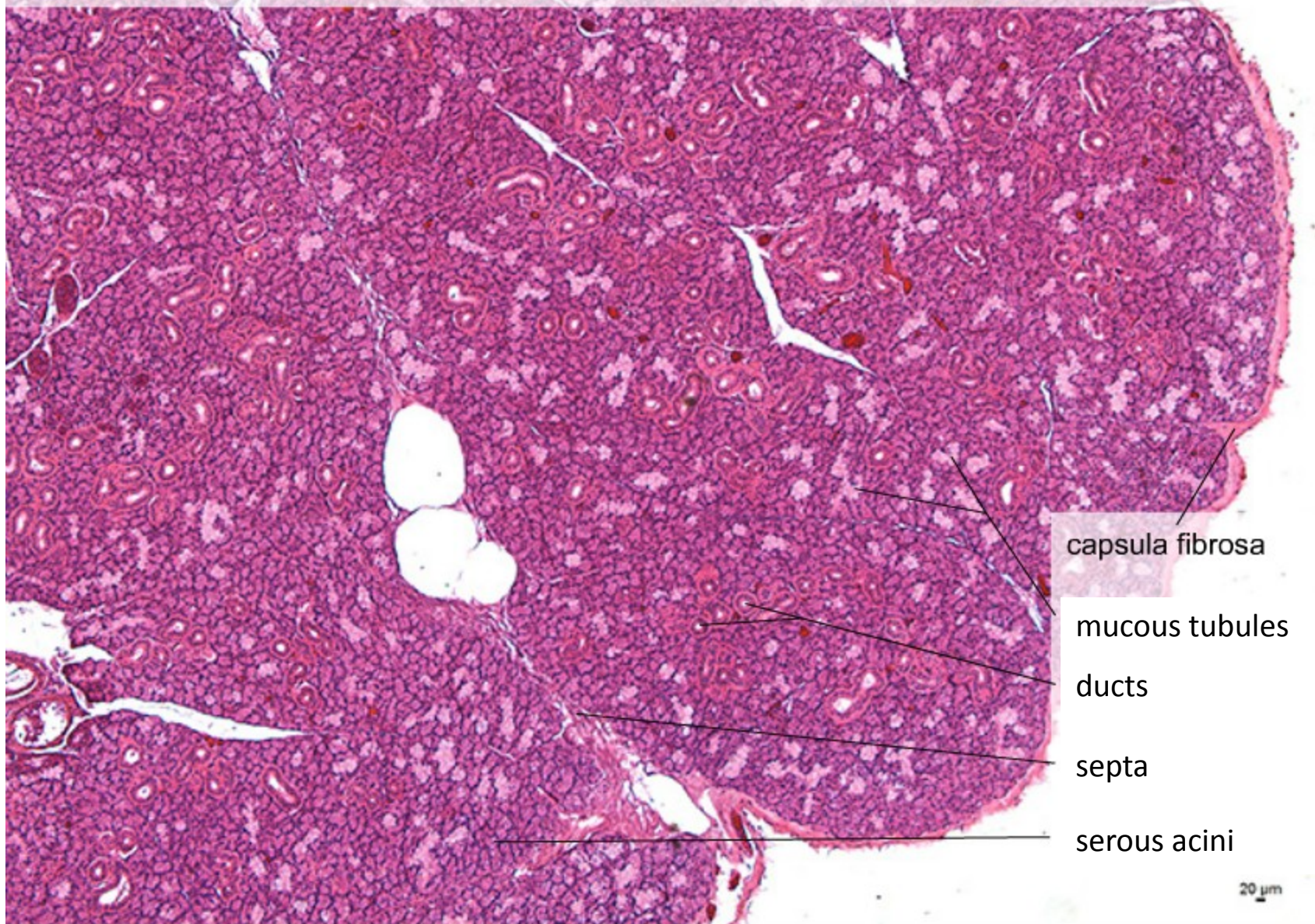
acini

adipous cells

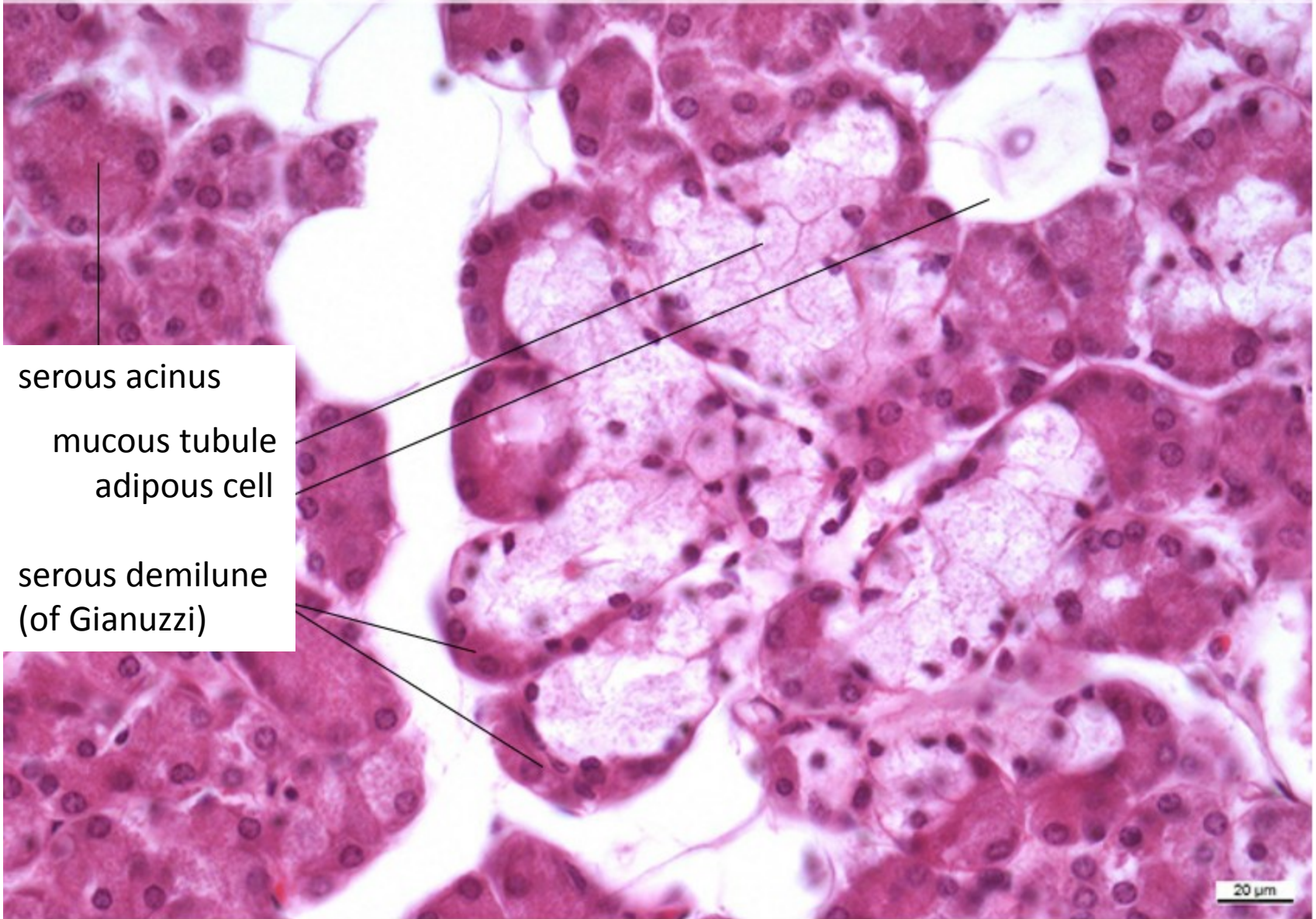
striated duct

20 μ m

Gl. submandibularis – přehled, (HE), objektiv 5×



Gl. submandibularis – detail I, (HE), objektiv 40×



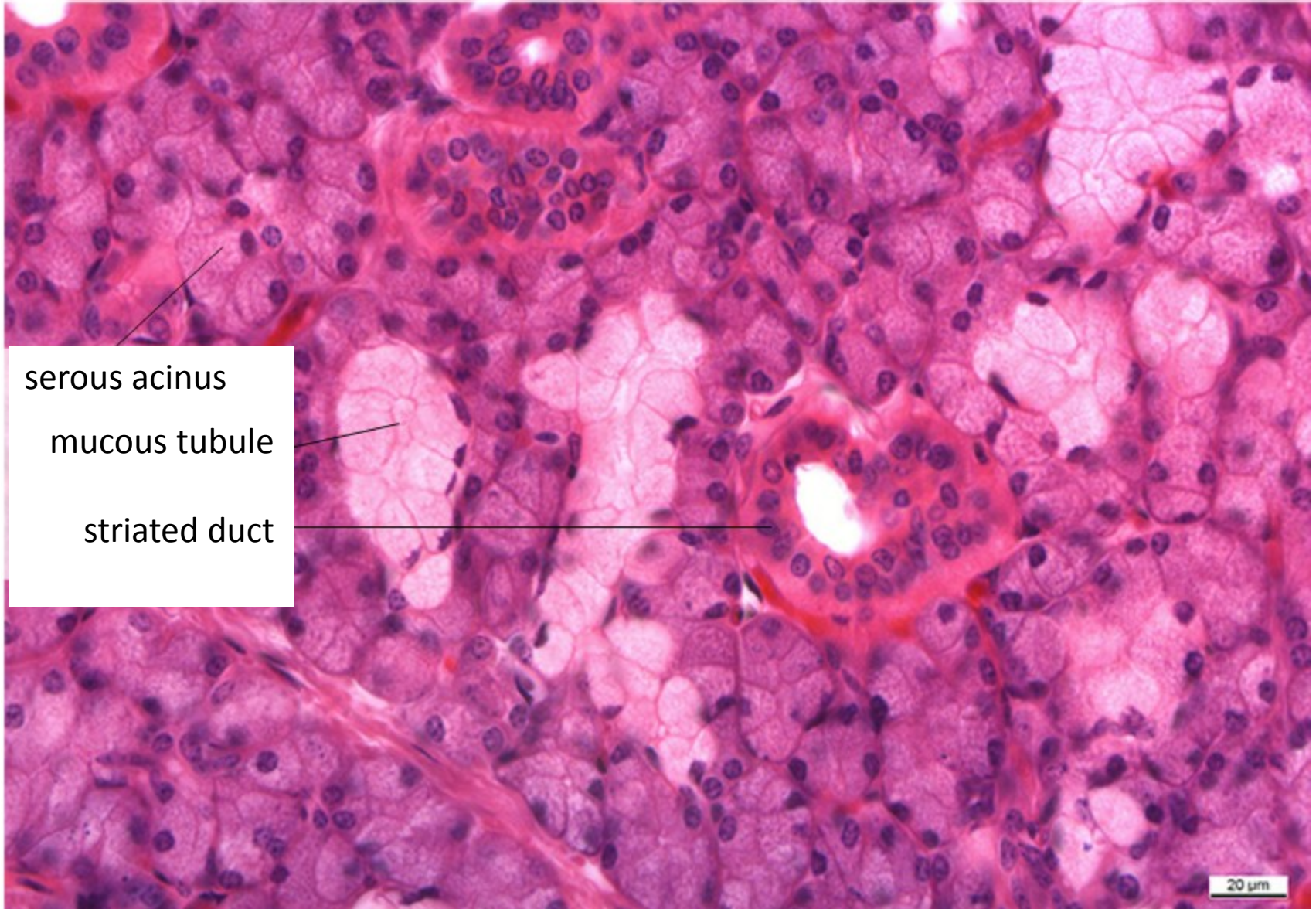
serous acinus

mucous tubule
adipous cell

serous demilune
(of Gianuzzi)

20 μm

Gl. submandibularis – detail II, (HE), objektiv 40×



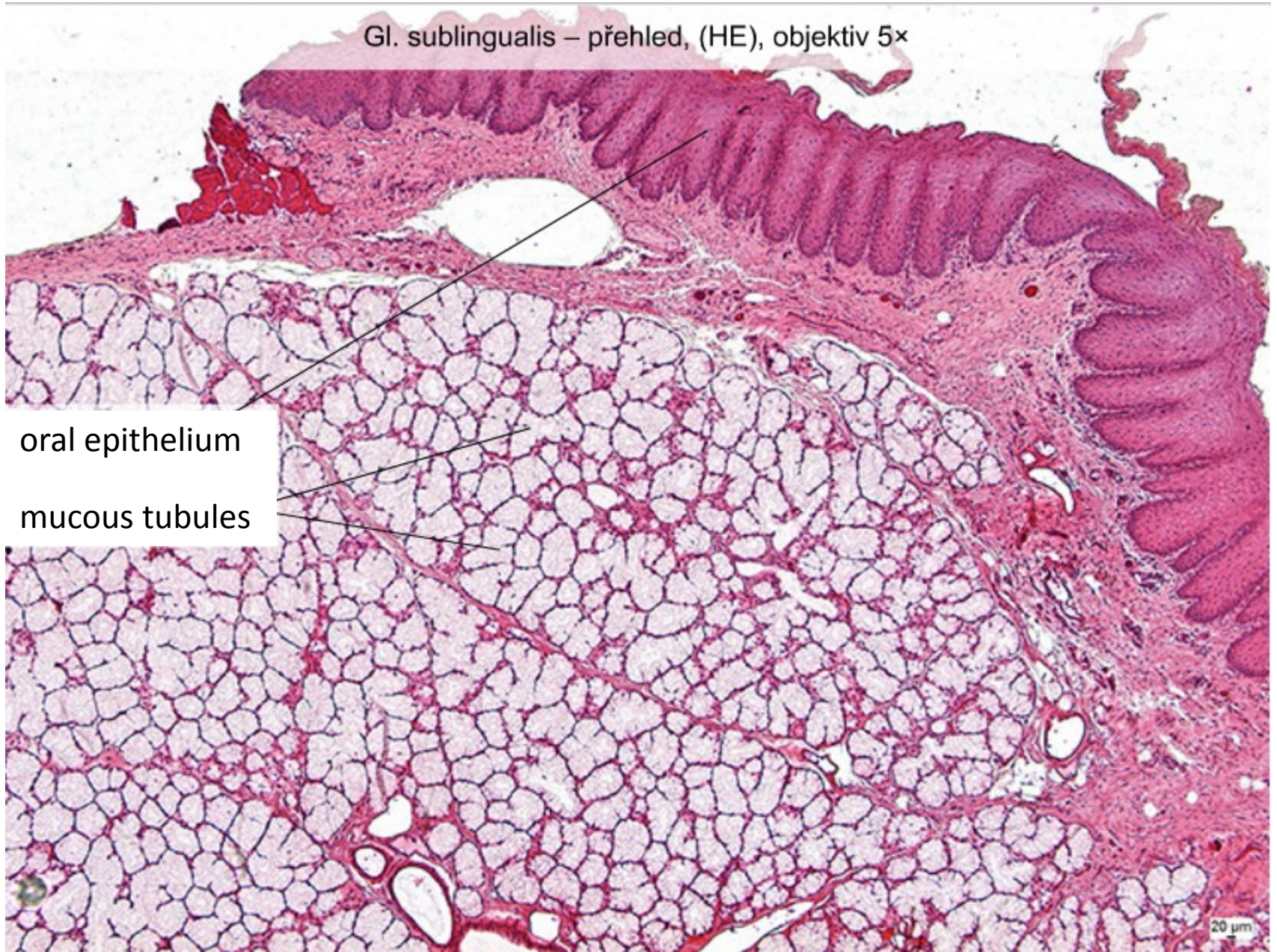
serous acinus

mucous tubule

striated duct

20 μm

Gl. sublingualis – přehled, (HE), objektiv 5×



oral epithelium

mucous tubules

20 μm