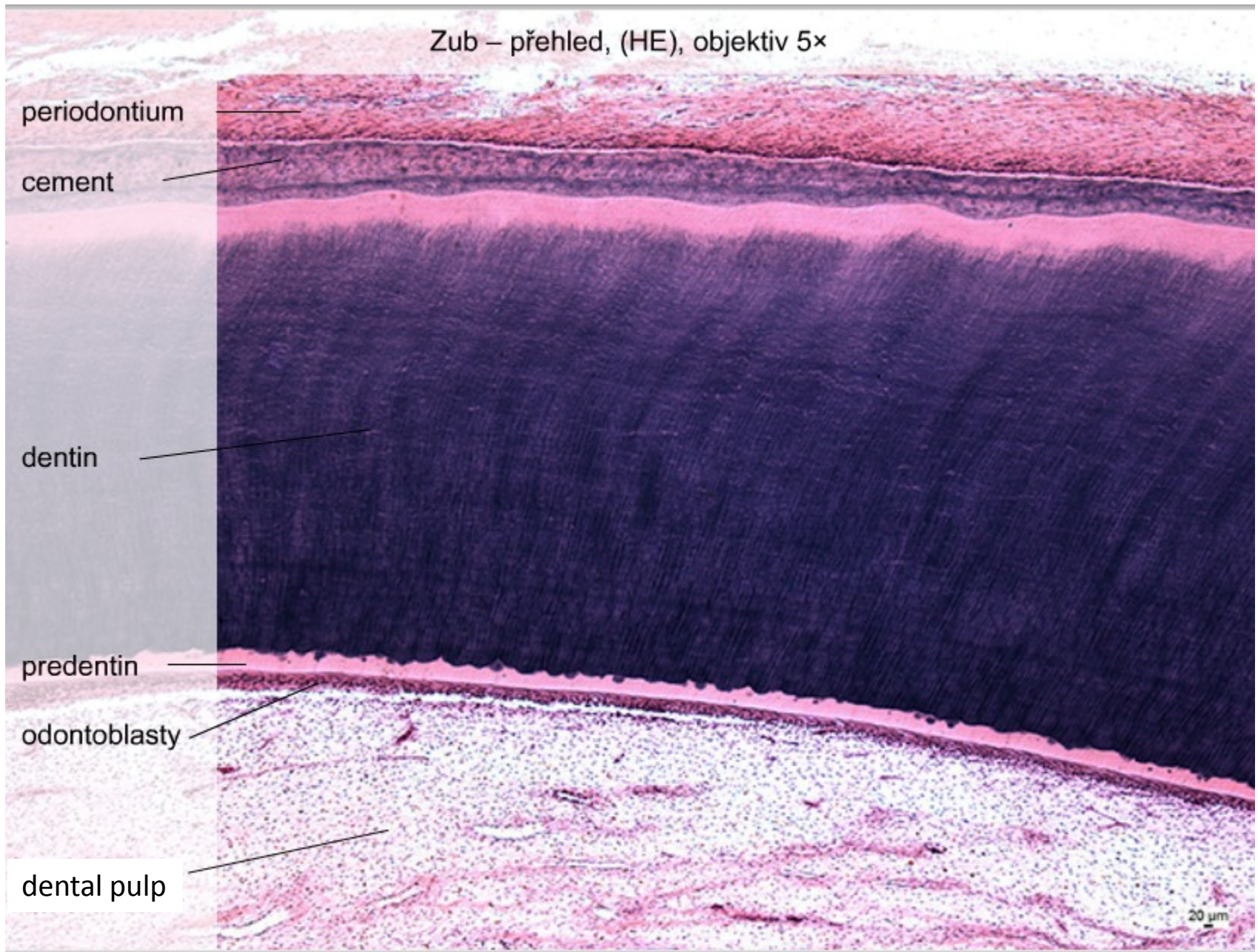


Digestive system - 2

Pictures from MedAtlas version 3,0

Tooth



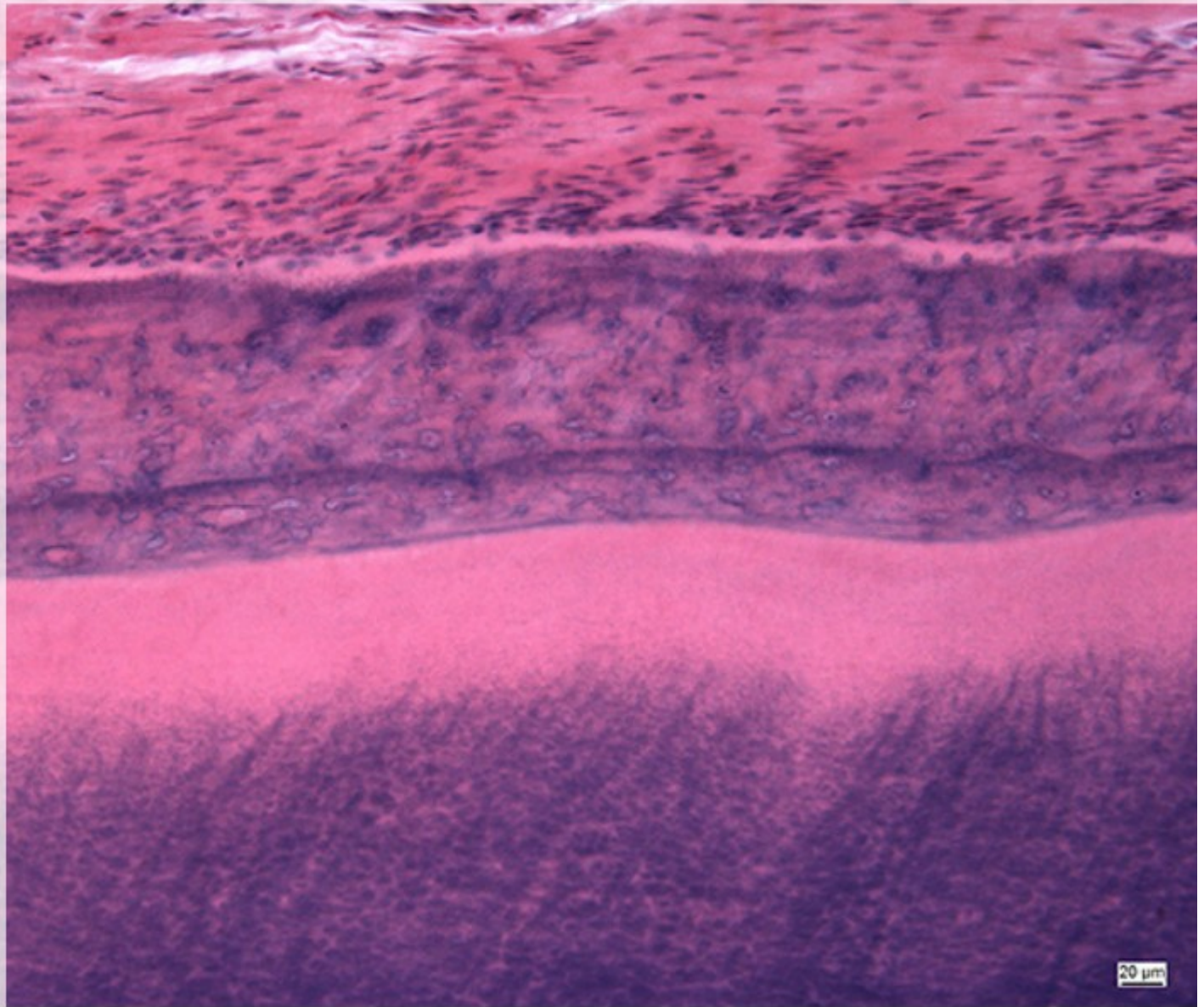
Tooth

Zub – detail, (HE), objektiv 20×

periodontium

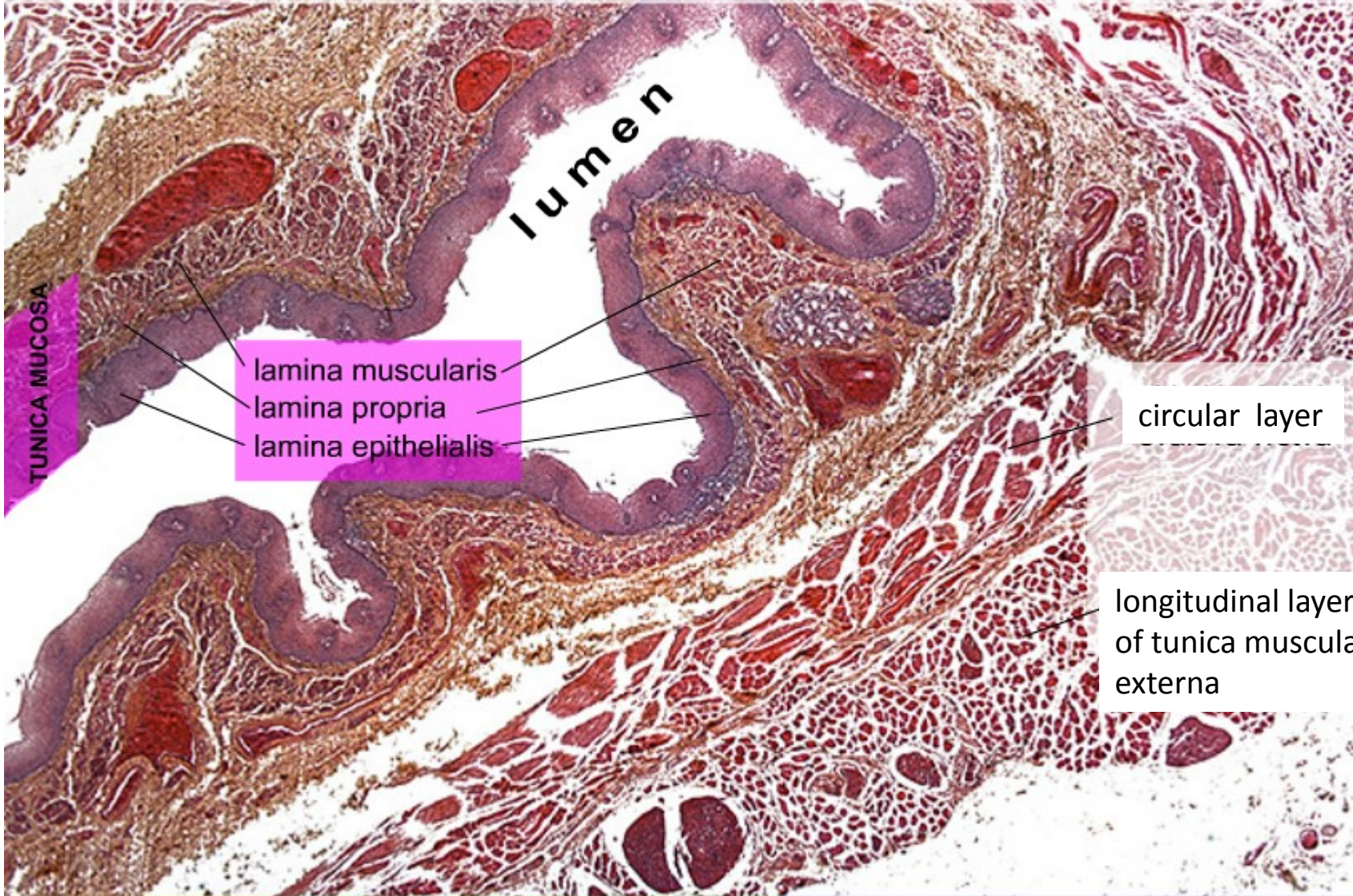
cement

dentin



20 μm

Oesophagus, (HE), objektiv 2,5x



TUNICA MUCOSA

lamina muscularis
lamina propria
lamina epithelialis

circular layer

longitudinal layer
of tunica muscularis
externa

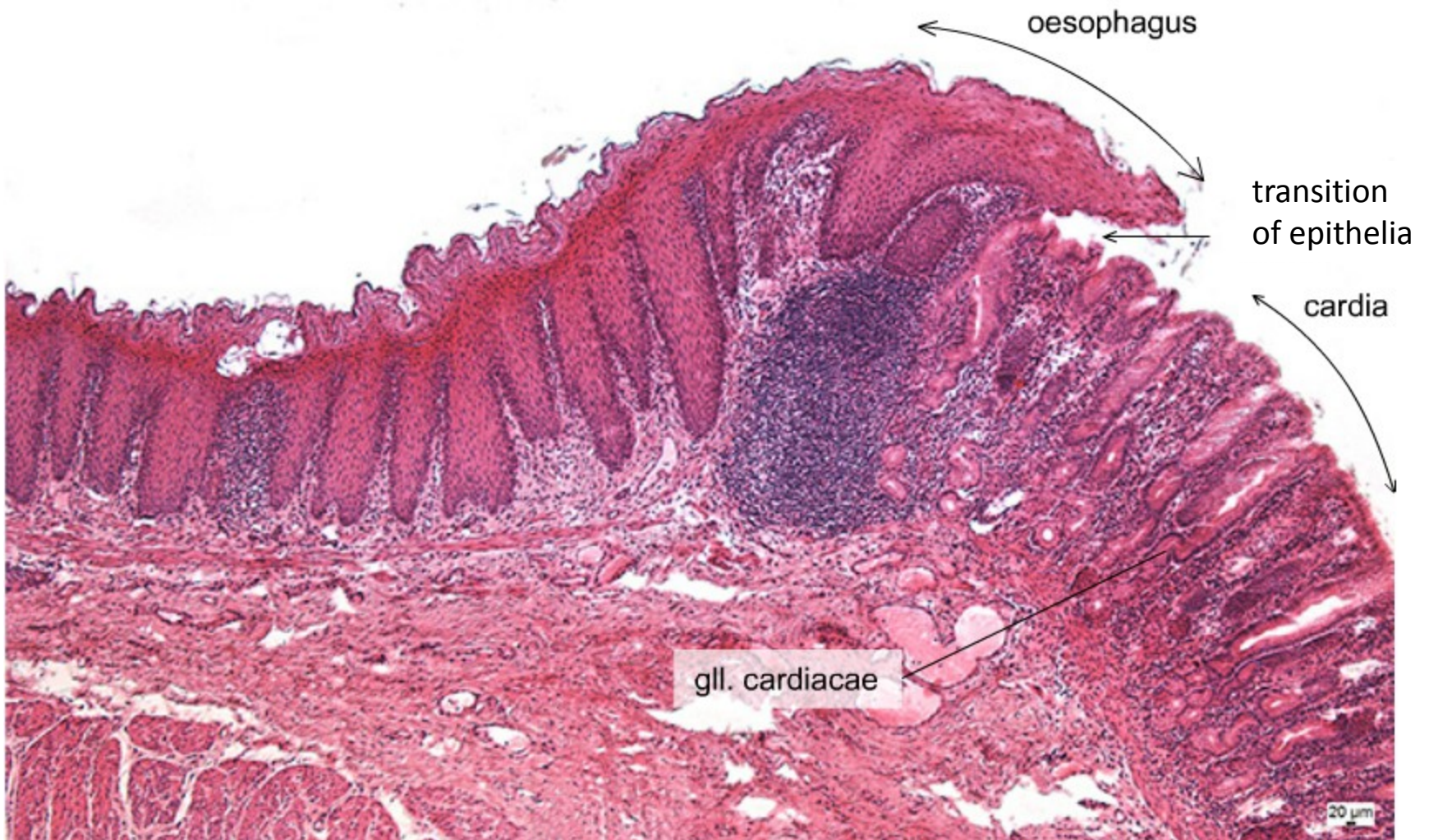
TUNICA SUBMUCOSA

TUNICA MUSCULARIS EXTERNA

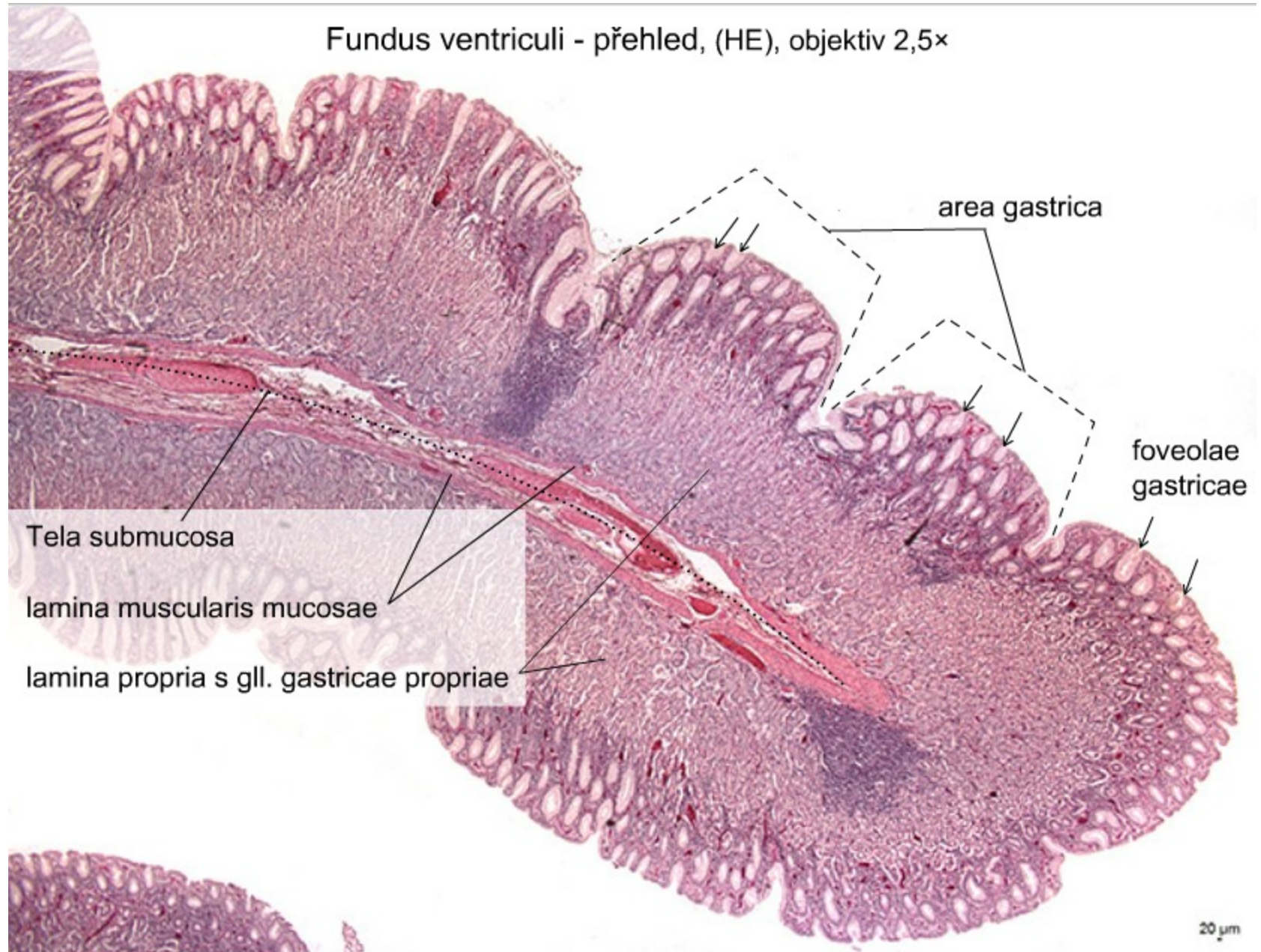
TUNICA ADVENTITIA

20 µm

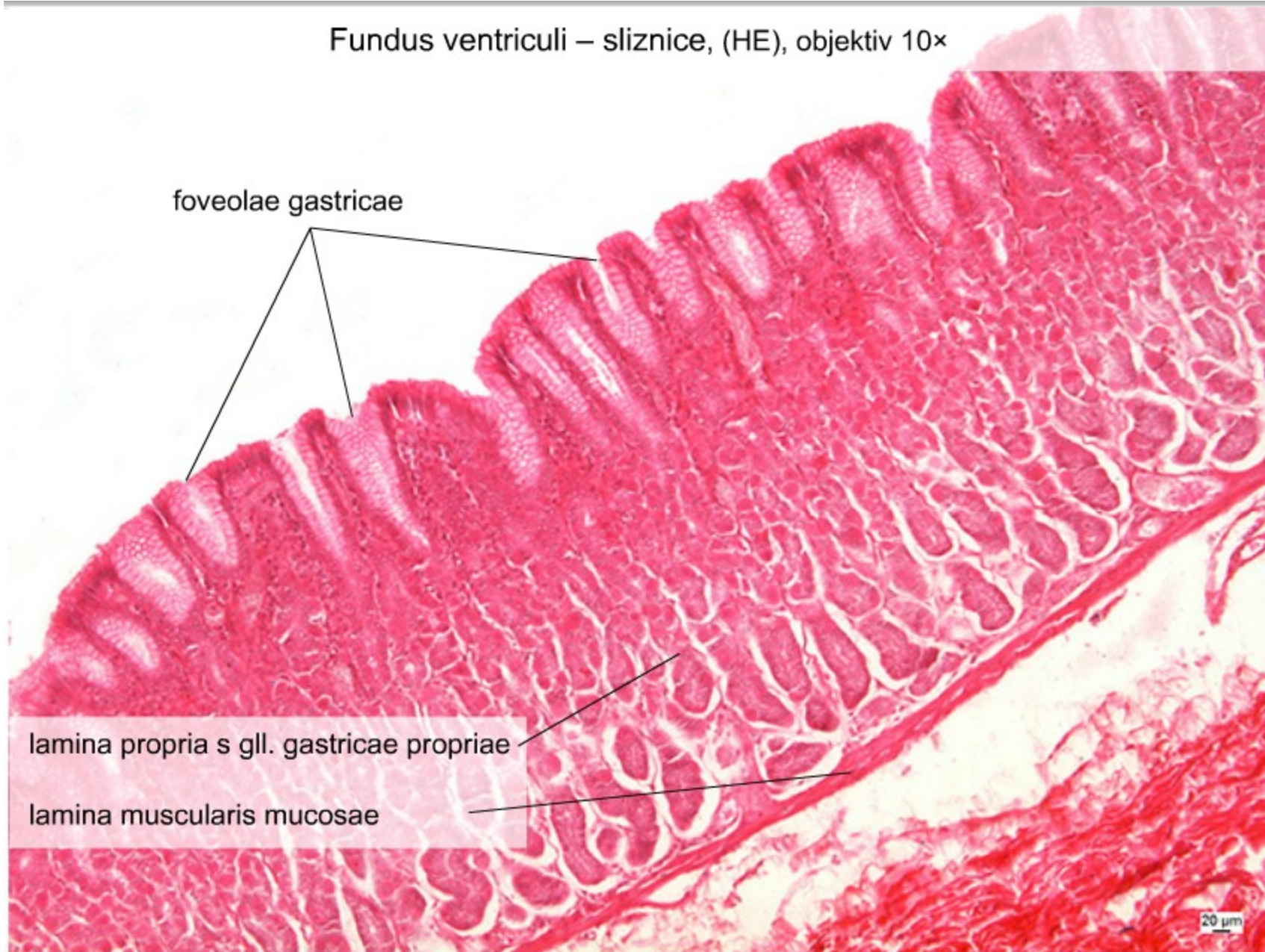
Cardia, (HE), objektiv 5×



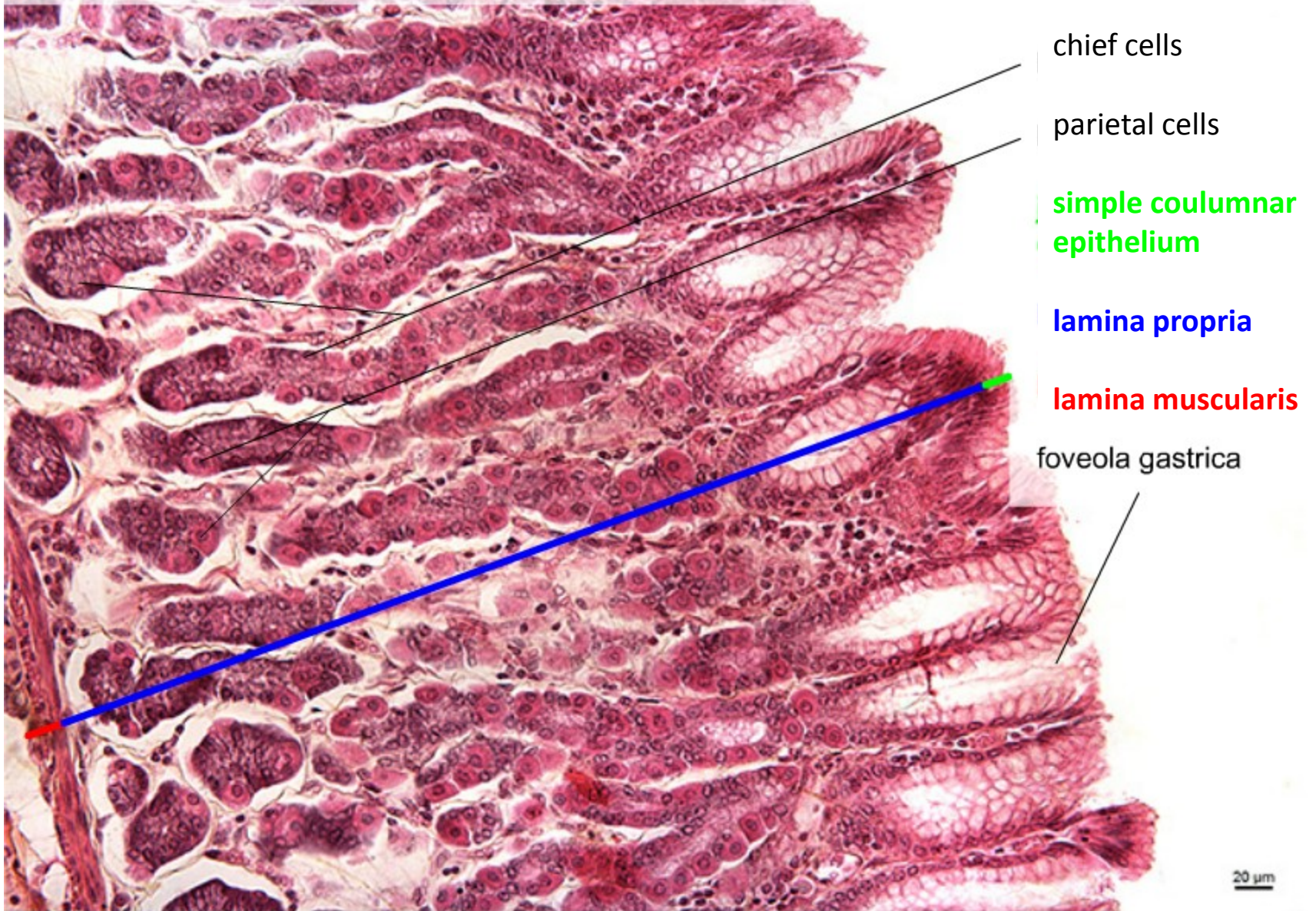
Fundus ventriculi - přehled, (HE), objektiv 2,5×



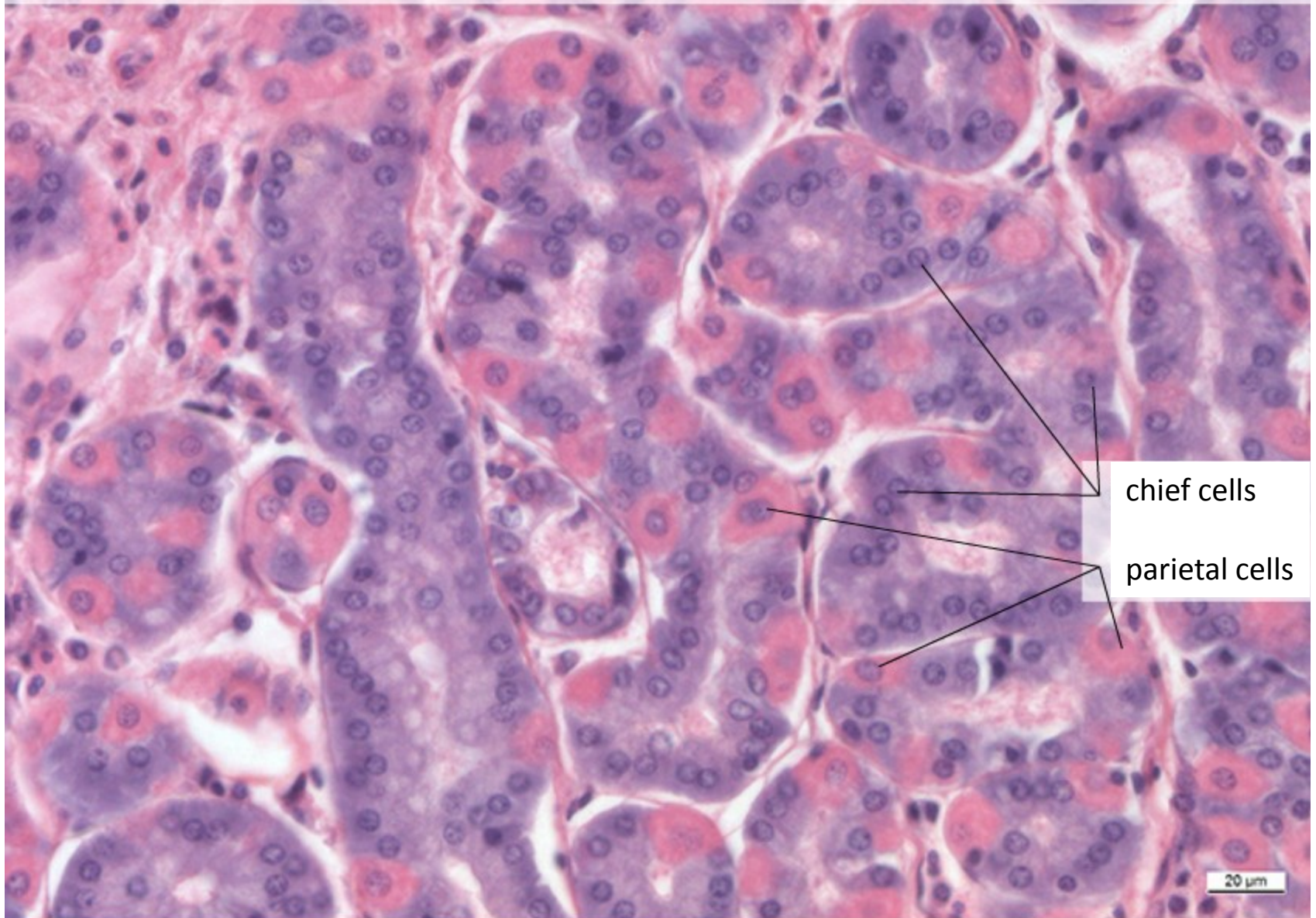
Fundus ventriculi – sliznice, (HE), objektiv 10×



Fundus ventriculi – foveolae a glandulae gastricae, (HE), objektiv 20×

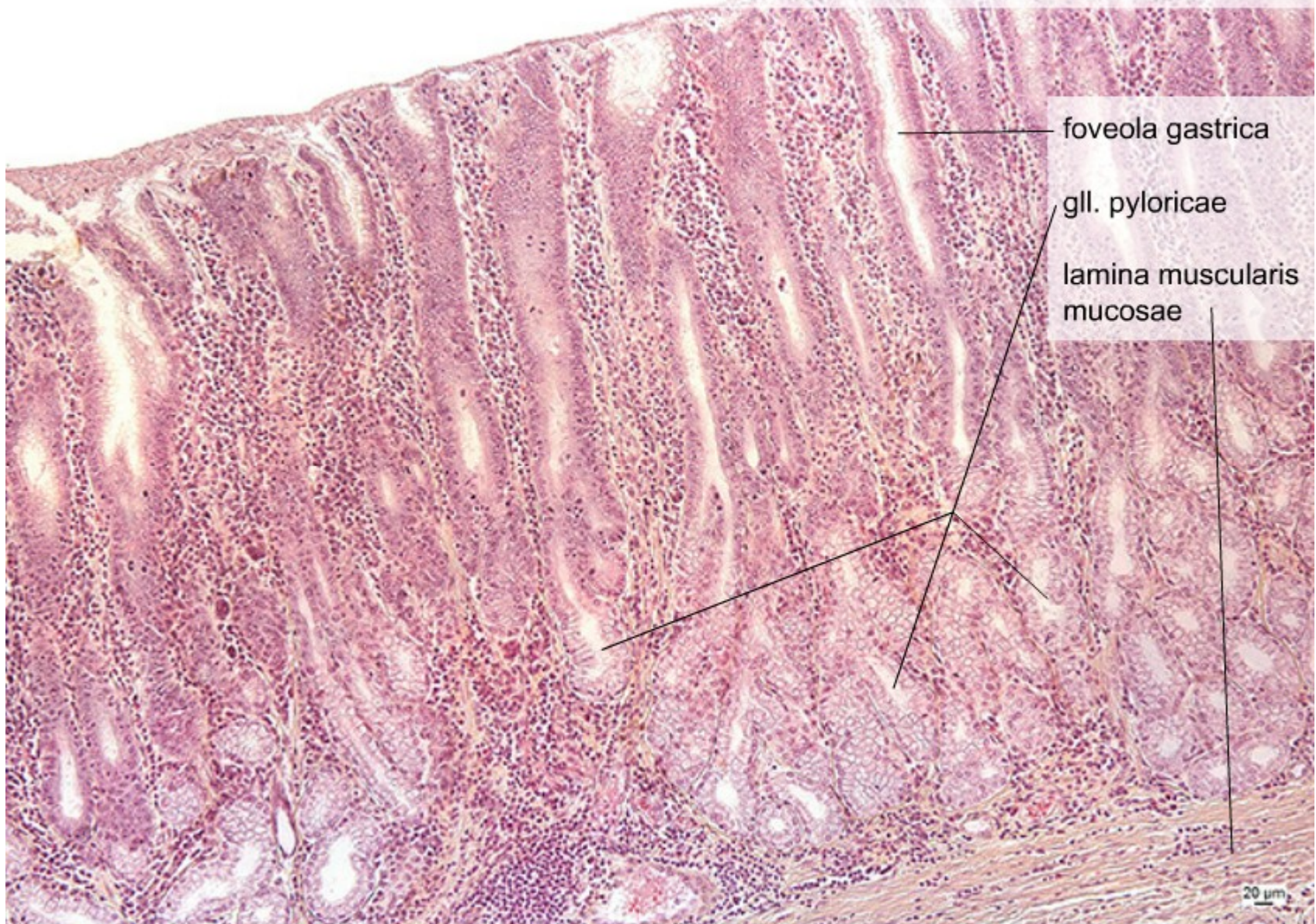


Fundus ventriculi – glandulae gastricae; detail, (HE), objektiv 20×

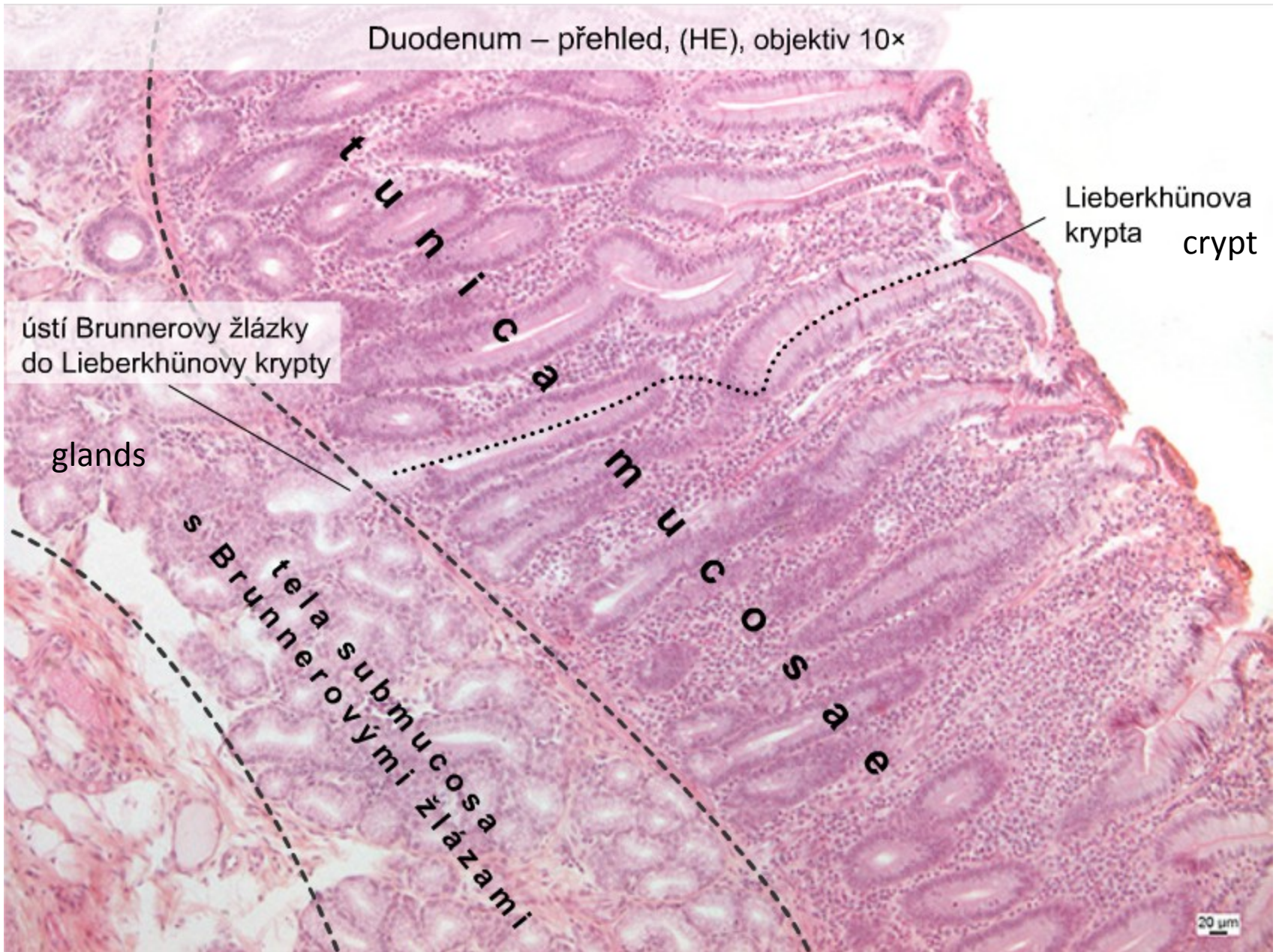


Pylorus - tunica mucosa

Pylorus – sliznice, (HE), objektiv 10×



Duodenum – přehled, (HE), objektiv 10×



Lieberkhünova
krypta crypt

ústí Brunnerovy žlázy
do Lieberkhünovy krypty

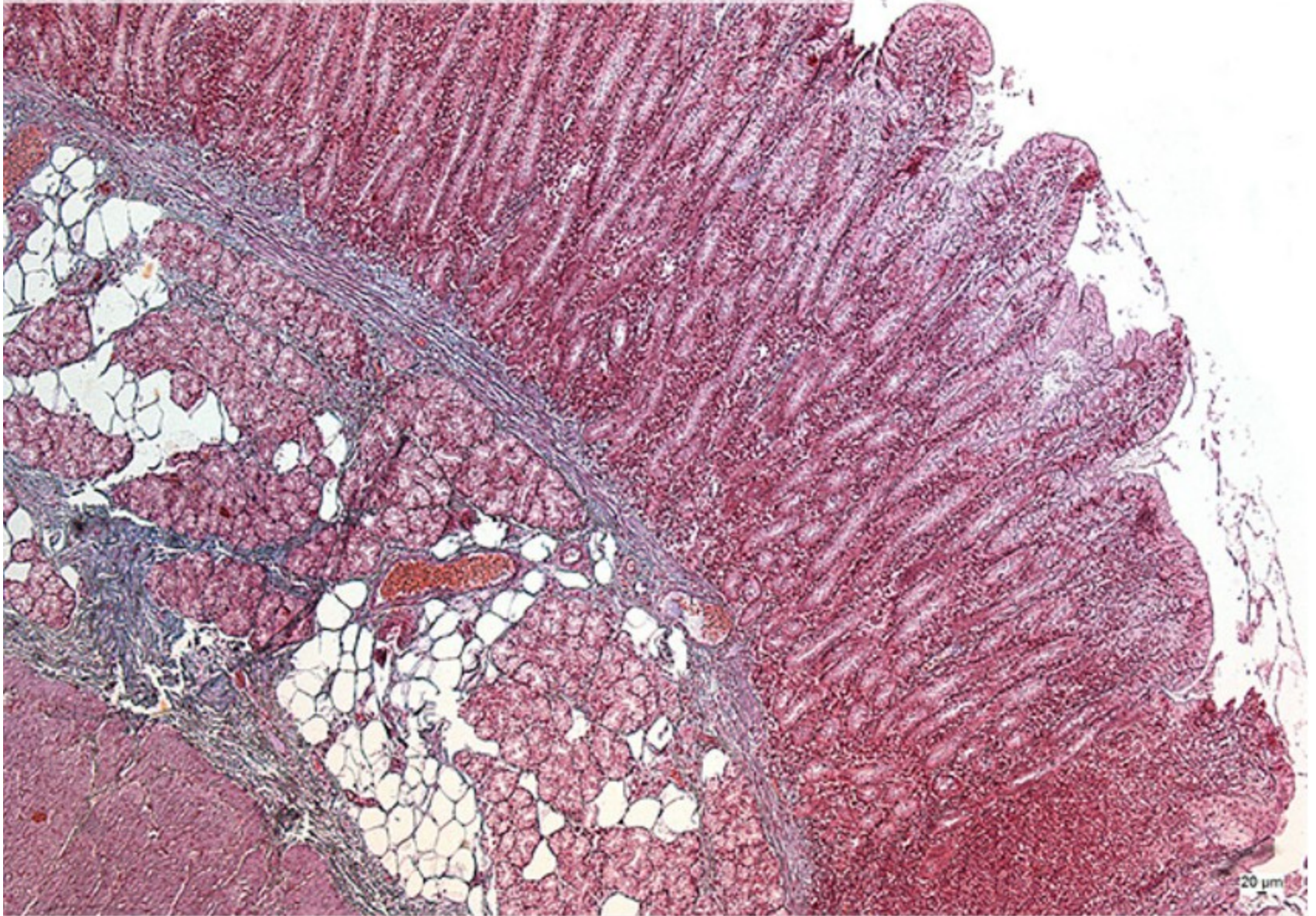
glands

tunica
mucosae
tela submucosa
s Brunnerovými žlázami

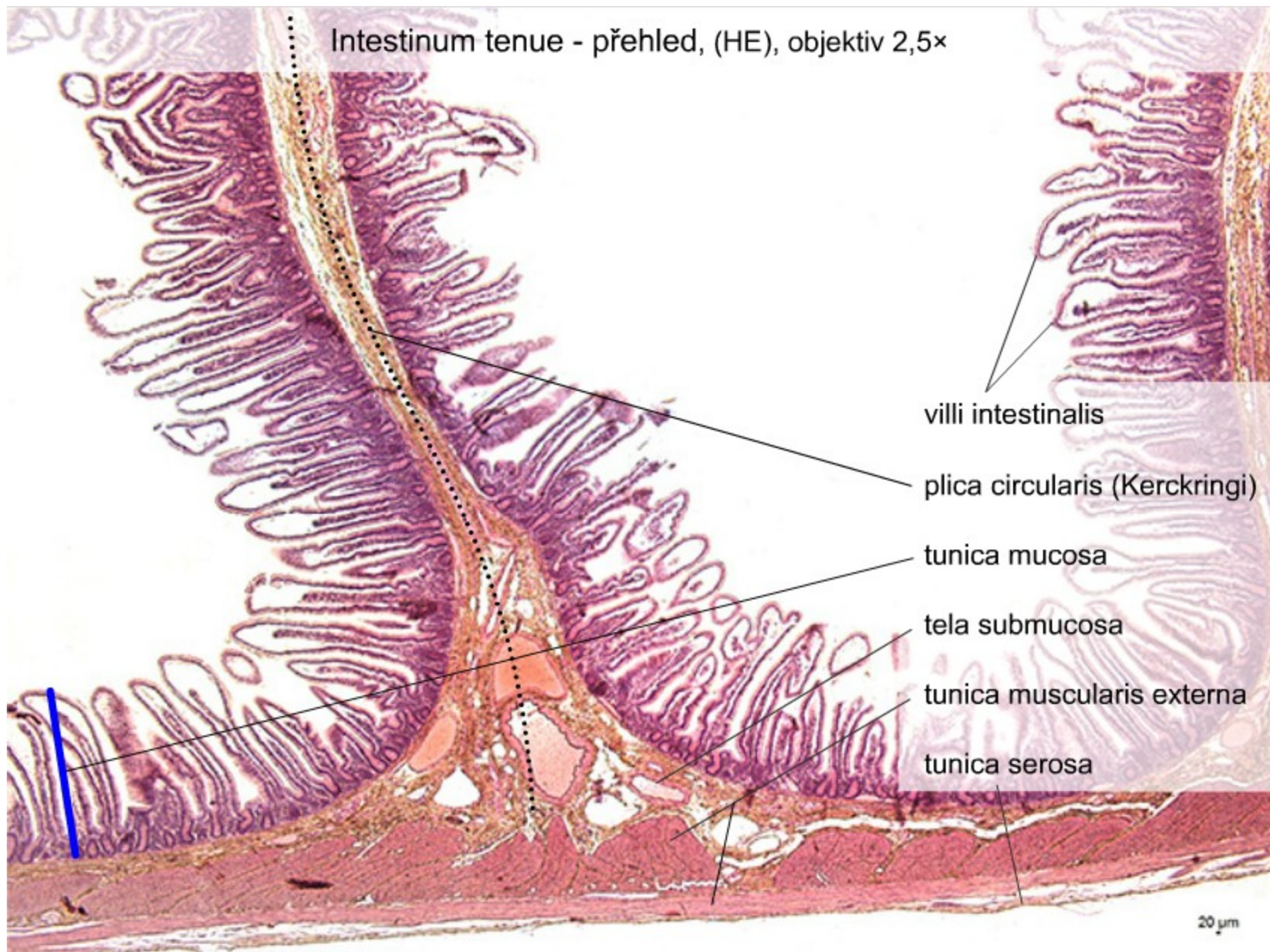
20 μm

Duodenum – staining method: Azan

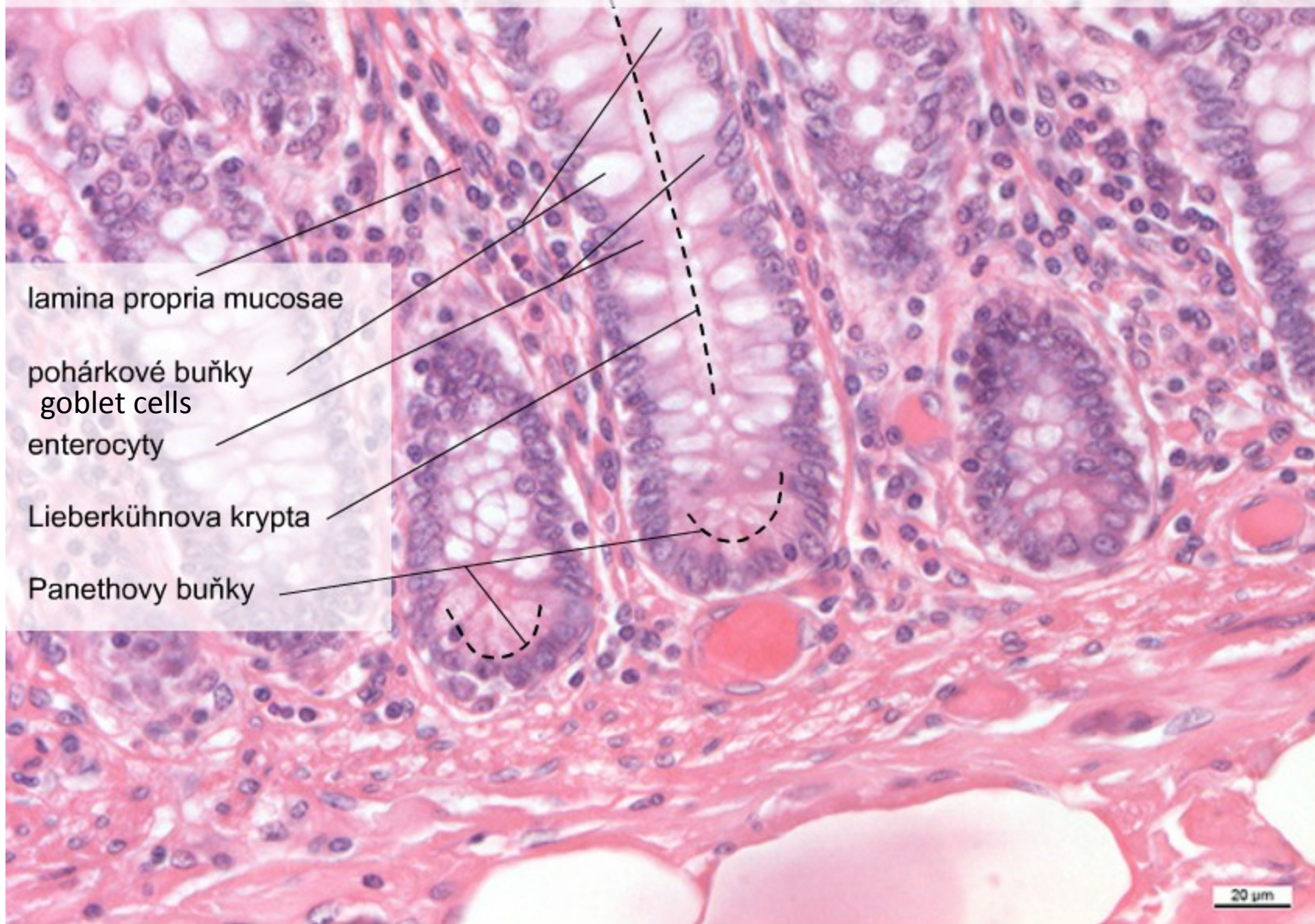
Barvení metodou Azan – duodenum, (AZAN), objektiv 5×



Intestinum tenue - přehled, (HE), objektiv 2,5×



Intestinum tenue – Panethovy buňky I, (HE), objektiv 40×



Intestinum tenue – Panethovy buňky II, (HE), objektiv 20×

