



vessels

tunica  
albuginea

tubuli  
seminiferi  
contorti

vein

septulum

20  $\mu$ m



Leydig cells

tubulus  
seminiferus  
contortus

membrana  
propria

spermatids



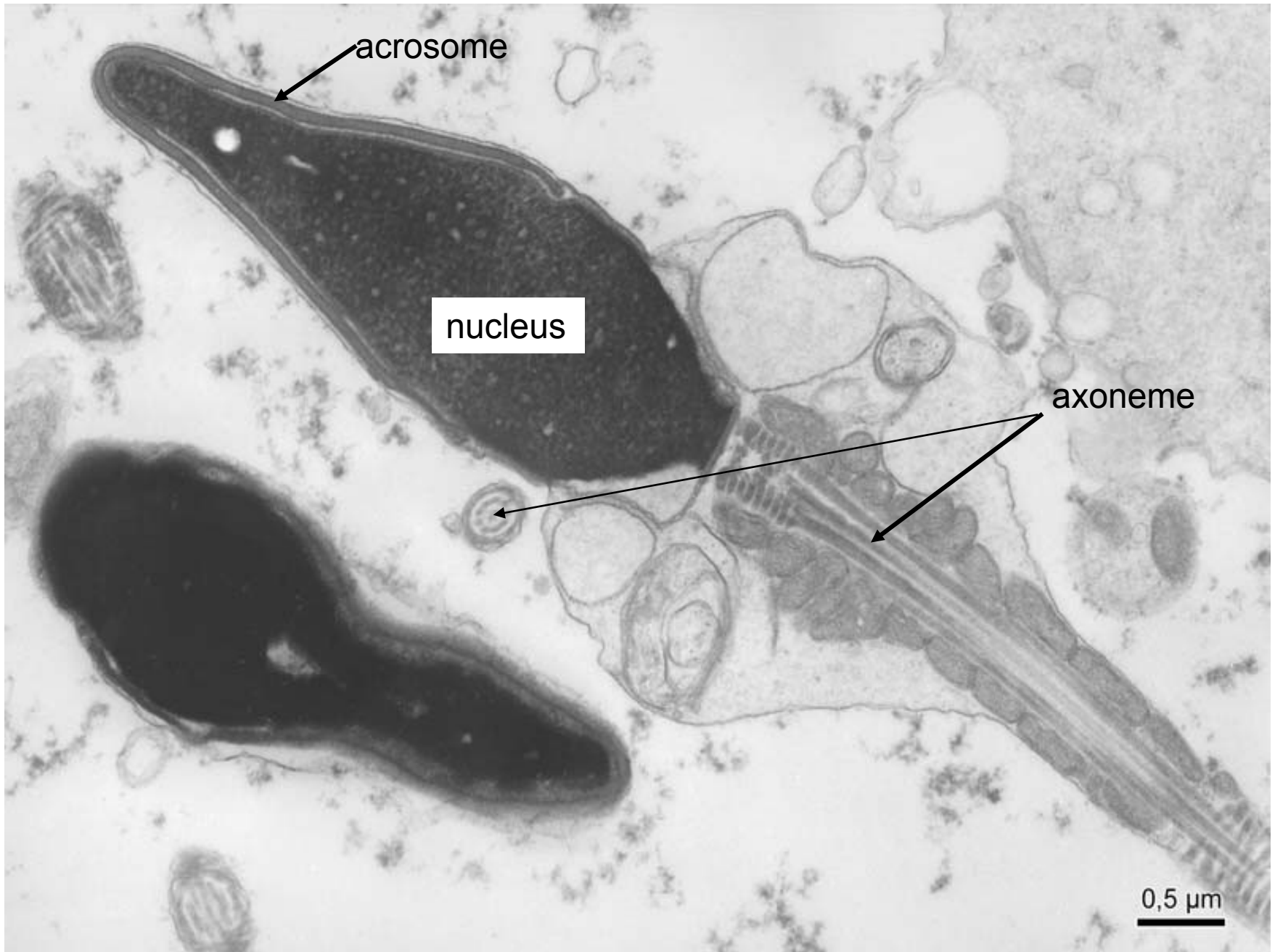
Leydig cells

germinative epithelium

Sertoli cells

primary spermatocytes

spermatogonia



acrosome

nucleus

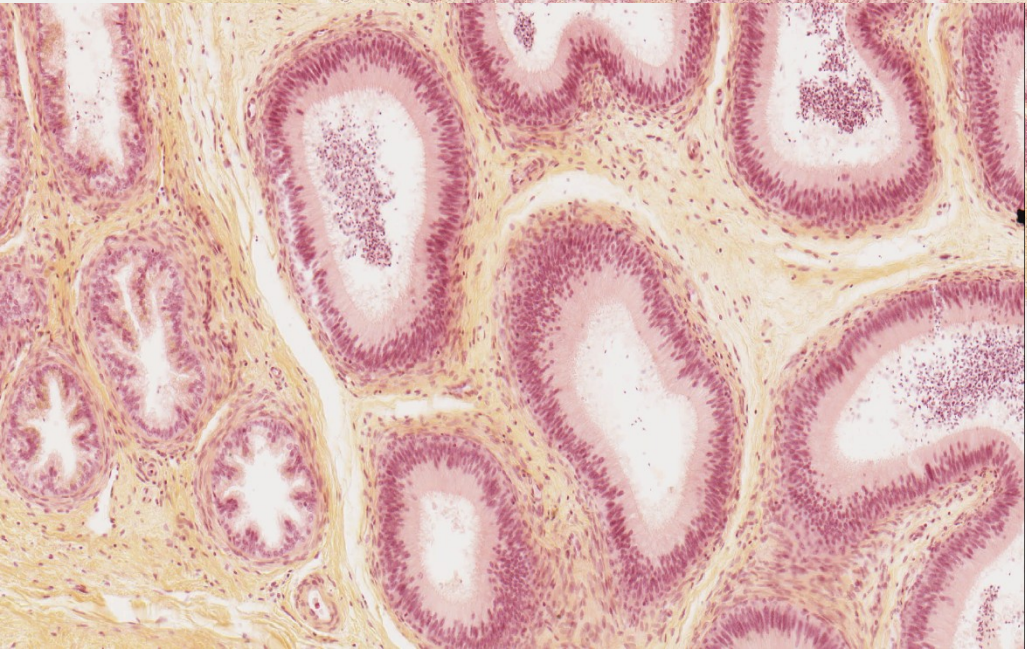
axoneme

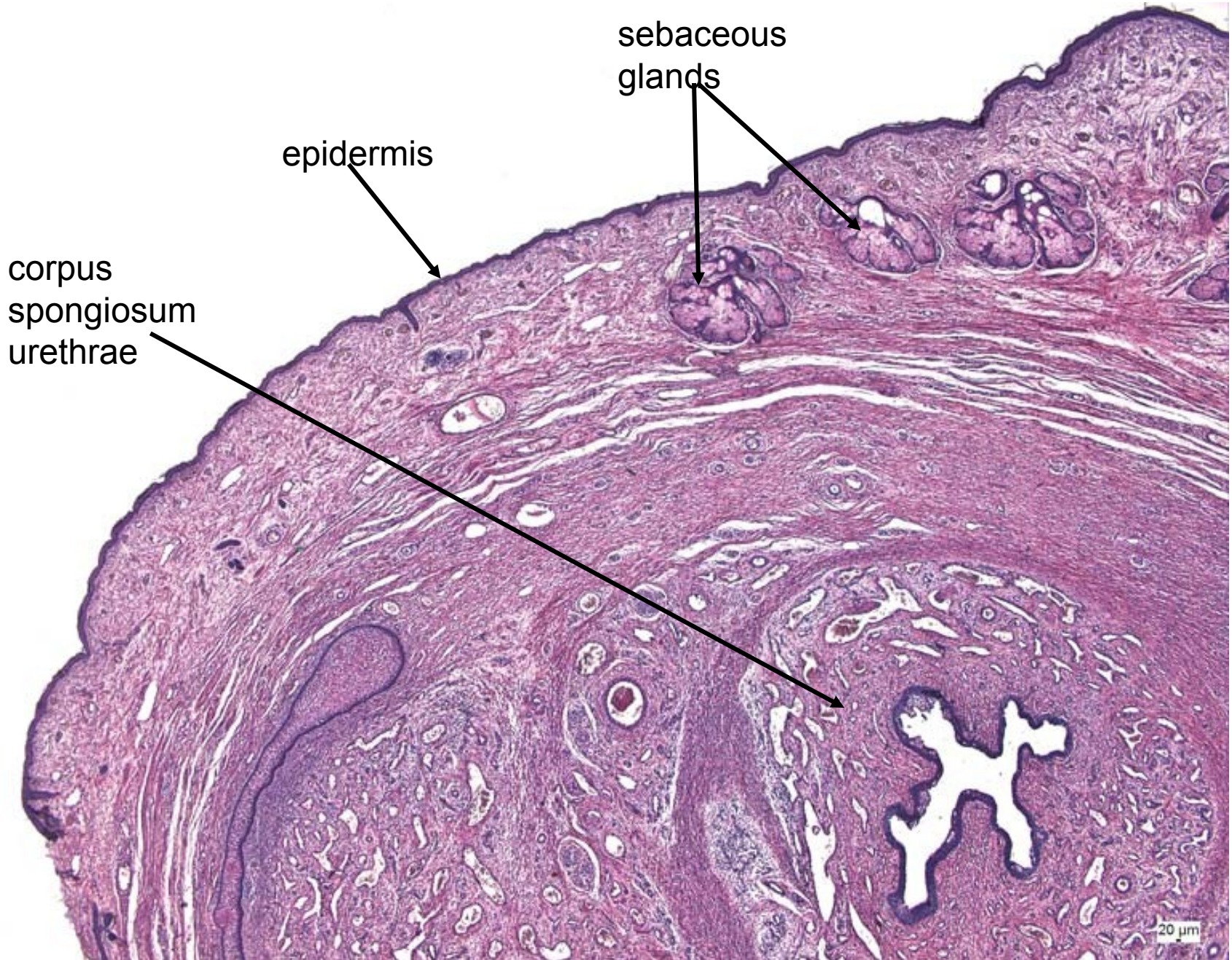
0,5  $\mu$ m



ductuli  
efferentes

ductus  
epididymidis





sebaceous glands

epidermis

corpus spongiosum urethrae

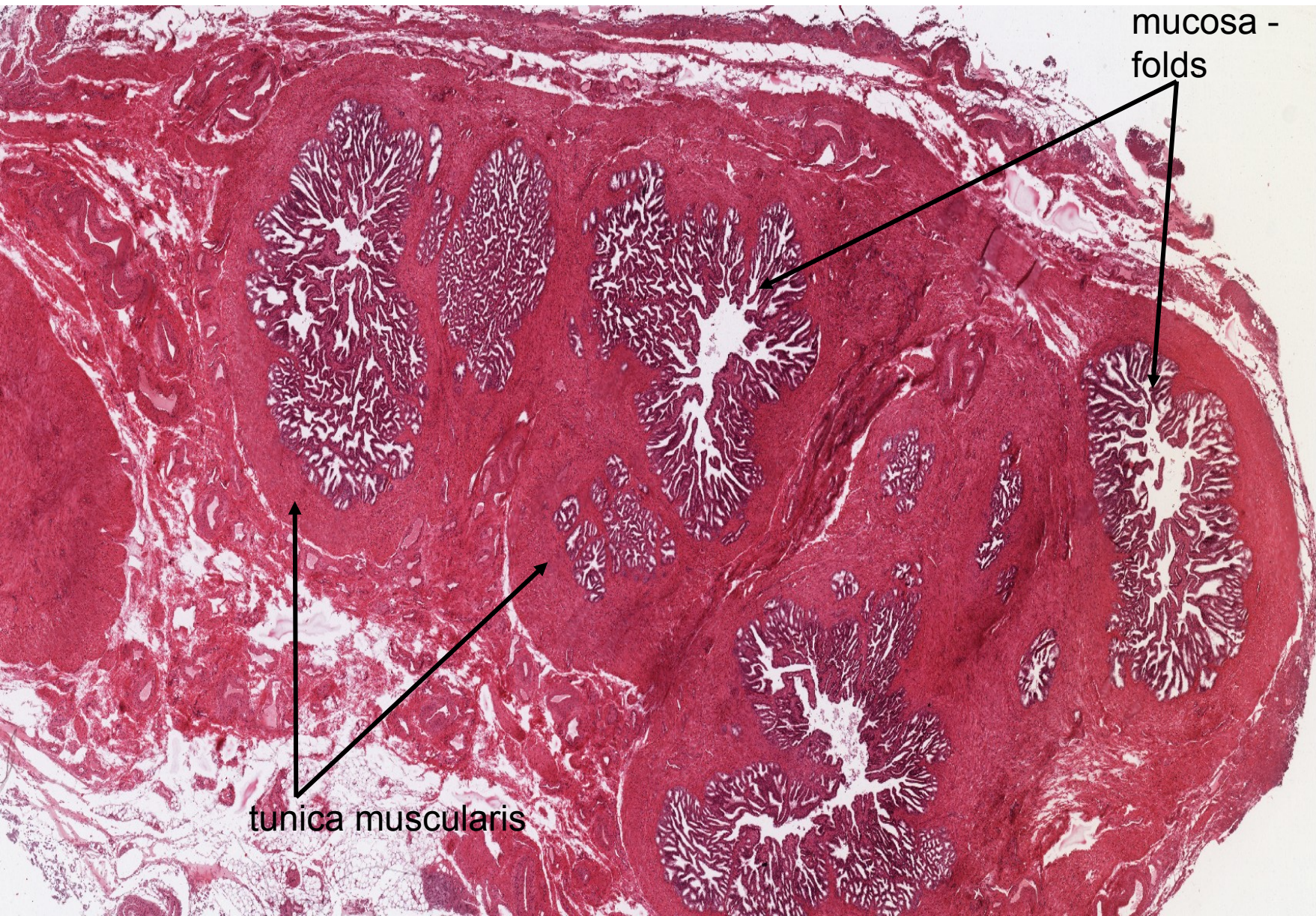
20 μm



ductus  
deferens

plexus  
pampiniformis

20 μm



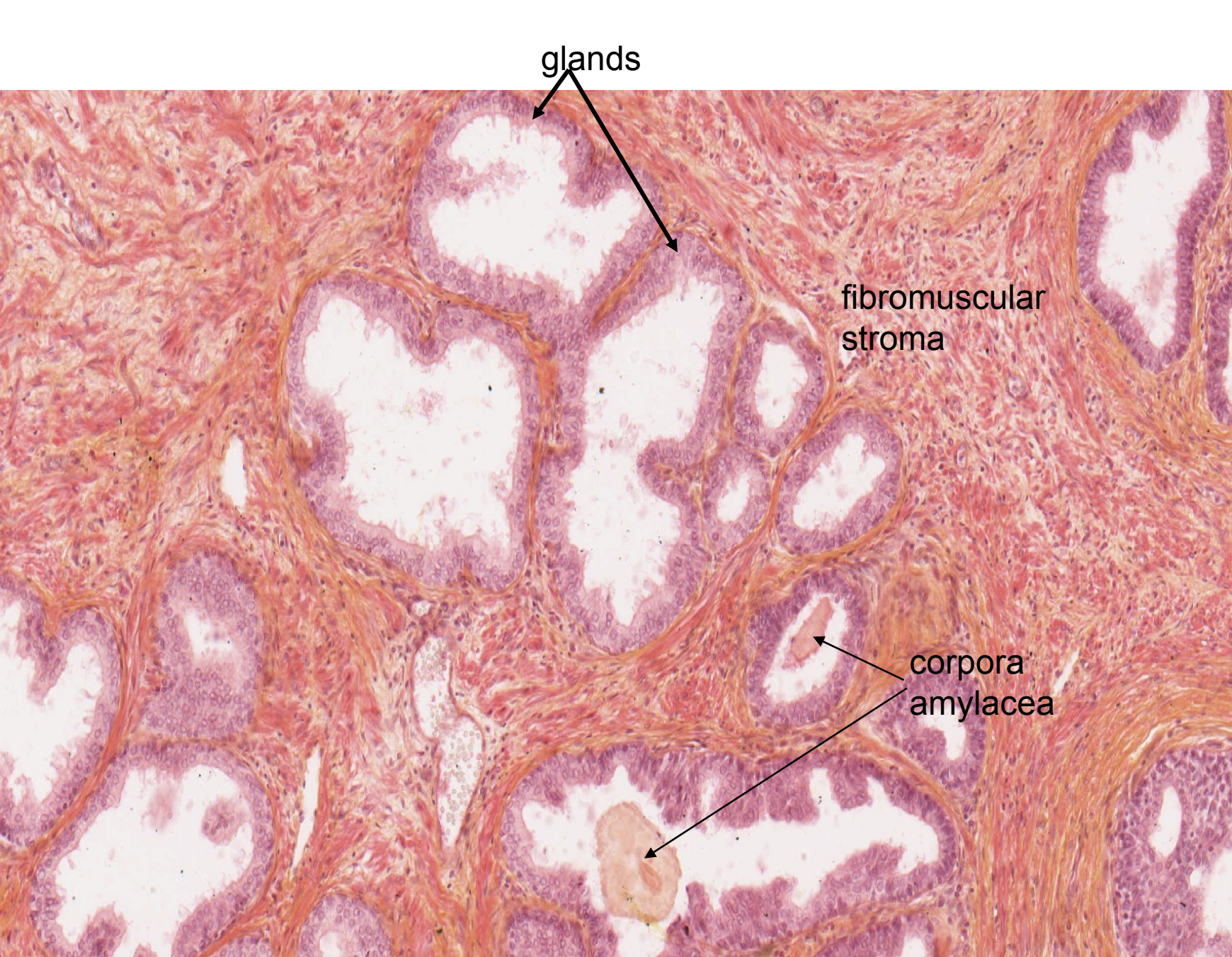
mucosa - folds

tunica muscularis

DEPARTMENT OF HISTOLOGY AND EMBRYOLOGY  
FACULTY OF MEDICINE, MASARYK UNIVERSITY





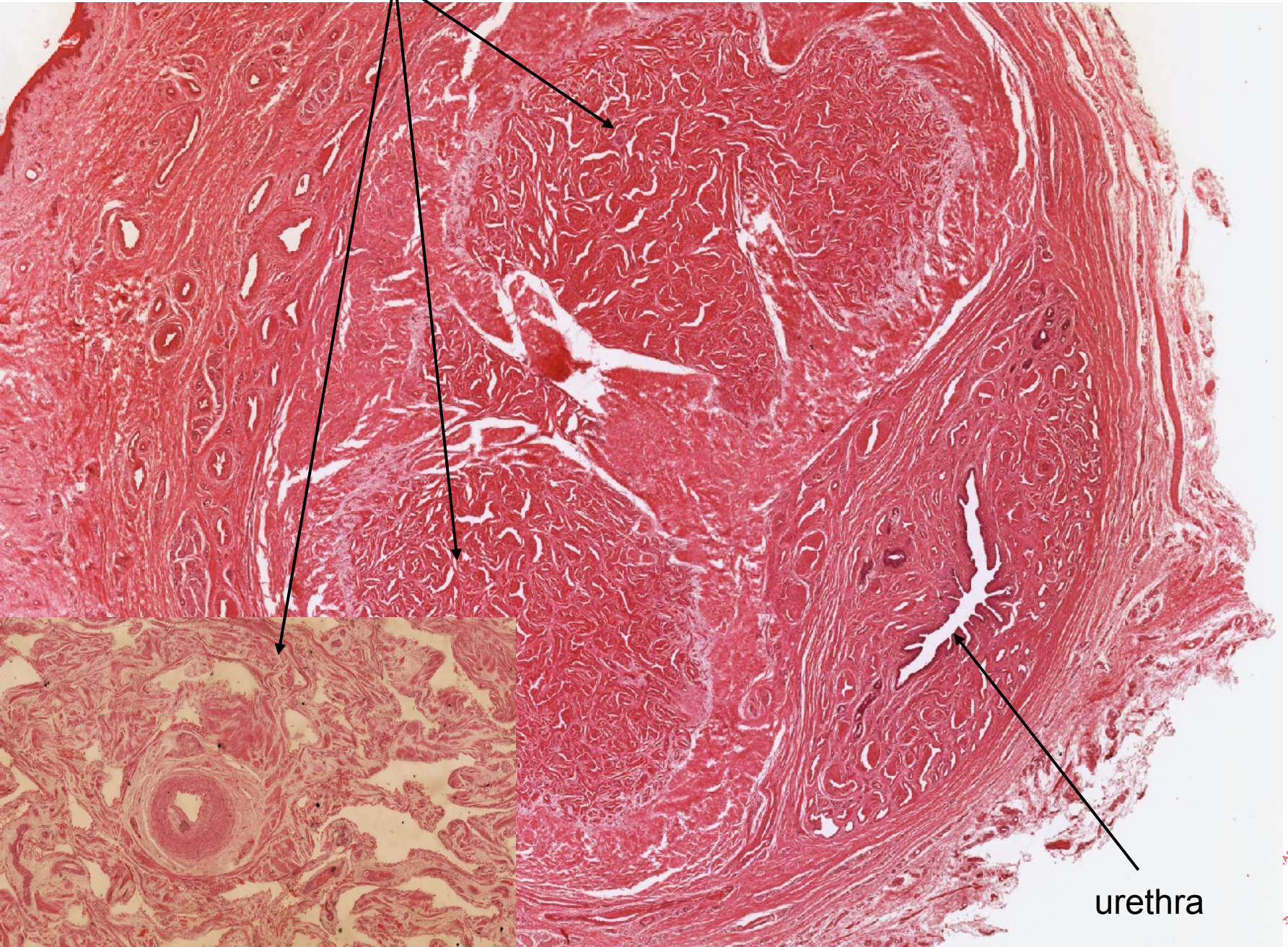


glands

fibromuscular  
stroma

corpora  
amylacea

corpora cavernosa



urethra