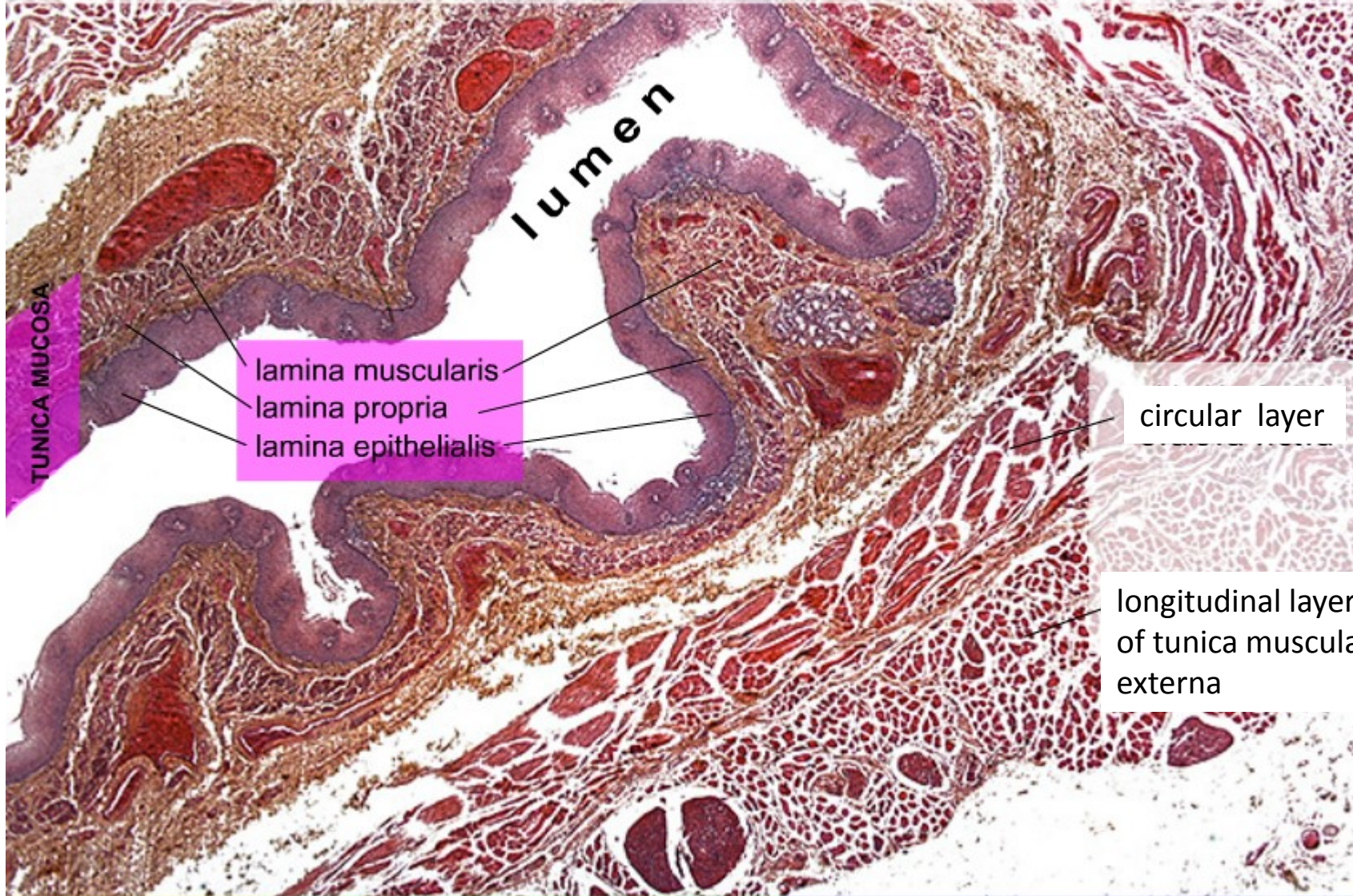


Digestive system - 2

Pictures from MedAtlas version 3,0

Oesophagus, (HE), objektiv 2,5x



TUNICA MUCOSA

lamina muscularis
lamina propria
lamina epithelialis

circular layer

longitudinal layer
of tunica muscularis
externa

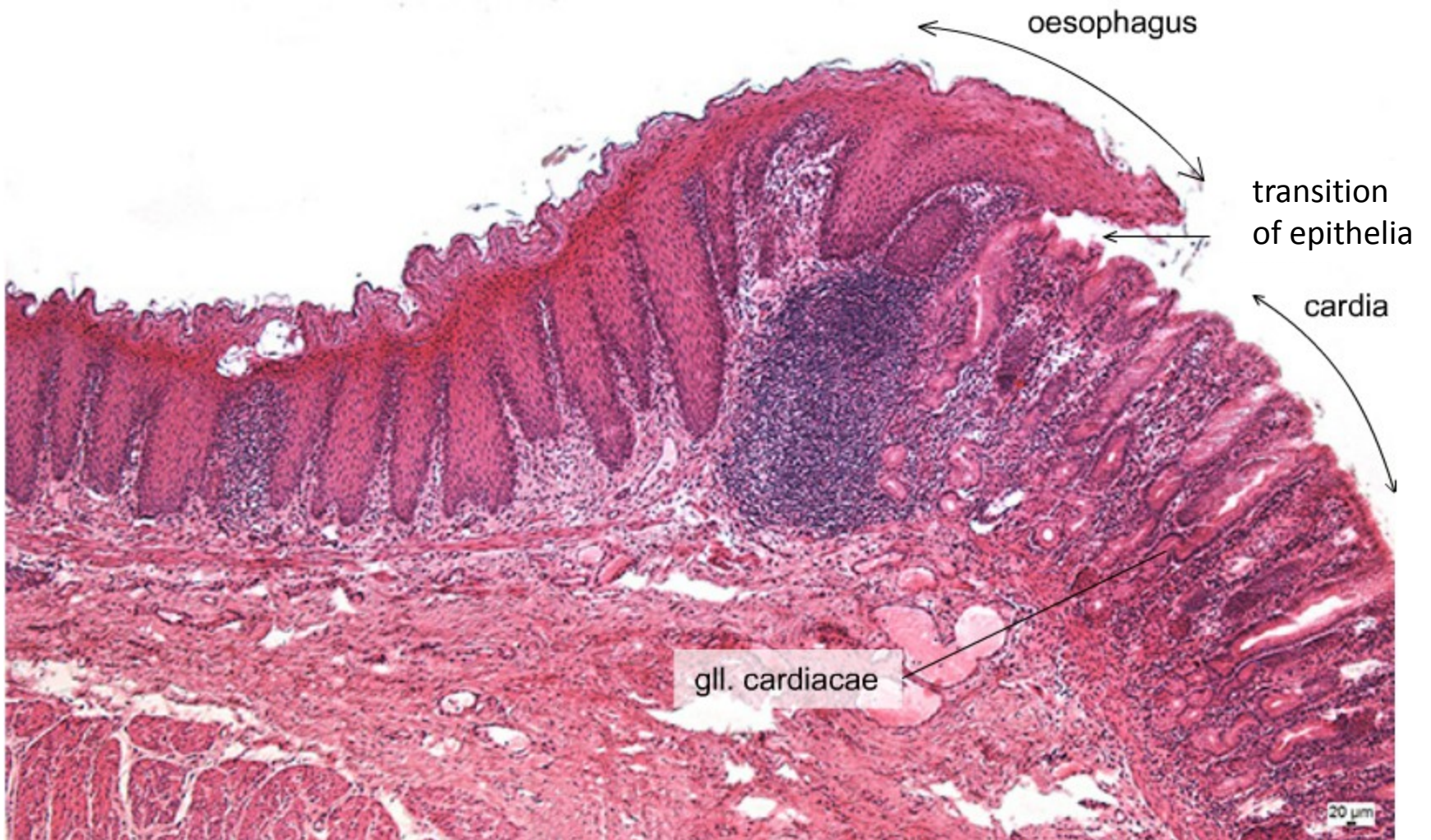
TUNICA SUBMUCOSA

TUNICA MUSCULARIS EXTERNA

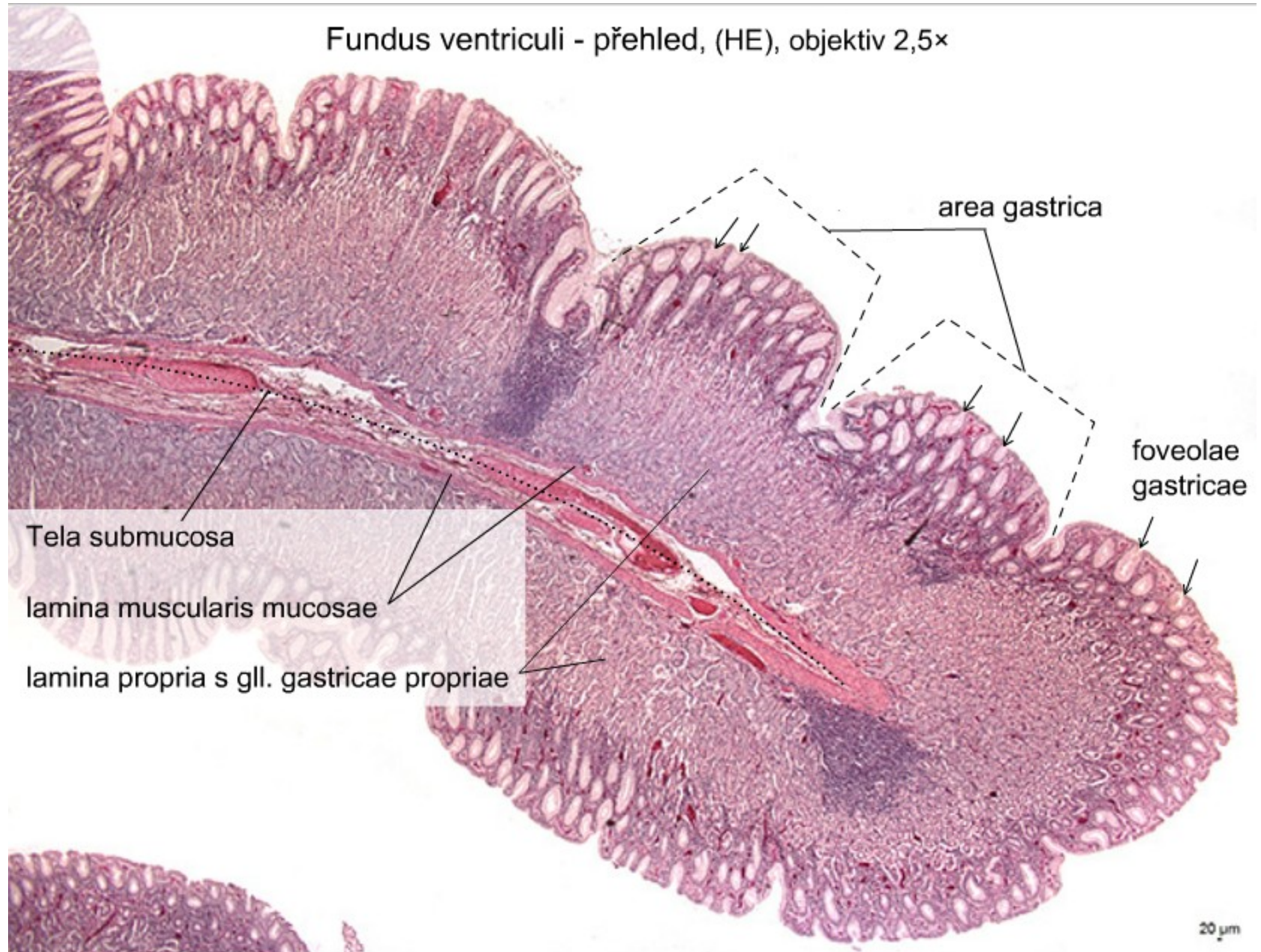
TUNICA ADVENTITIA

20 μm

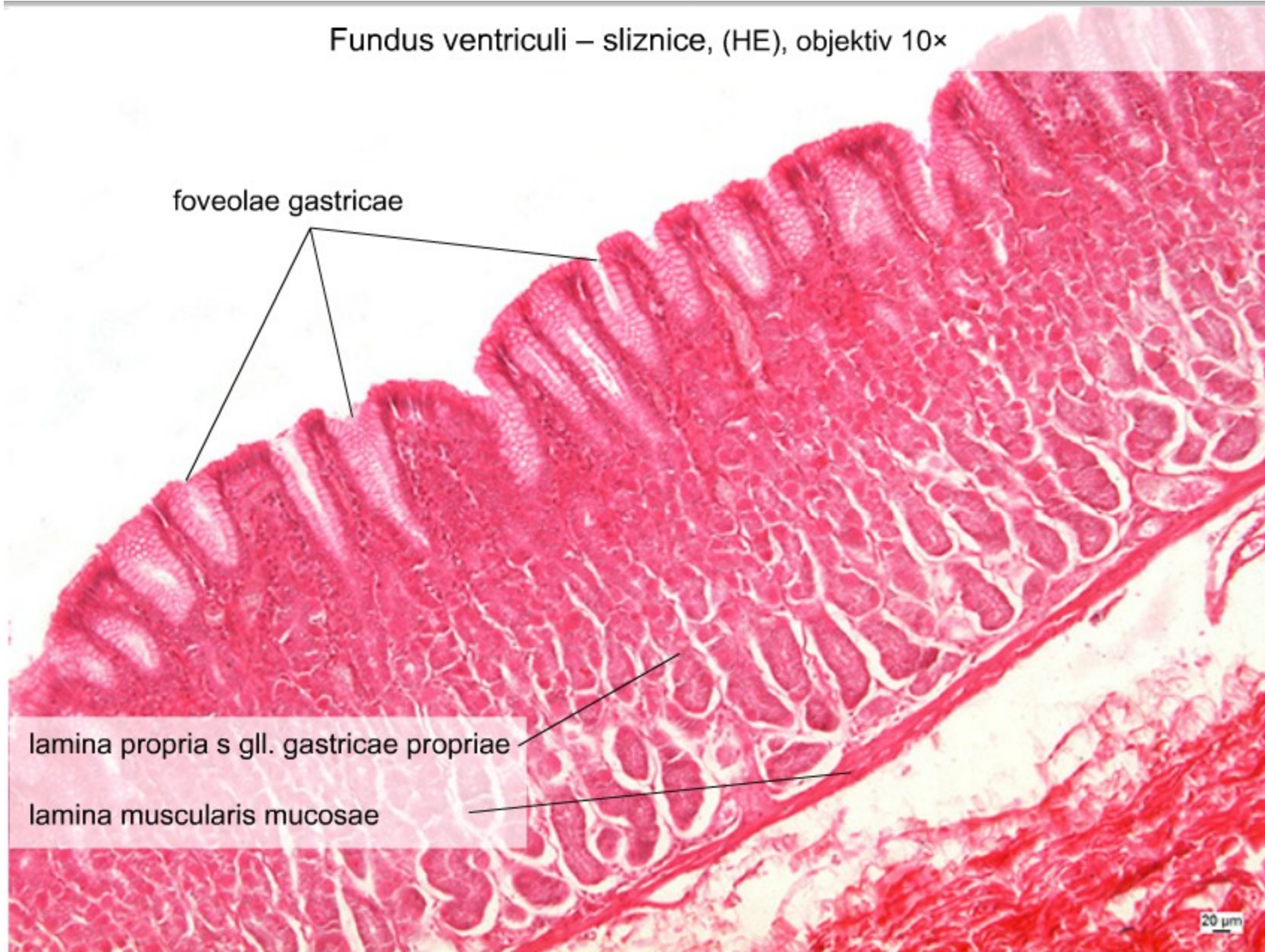
Cardia, (HE), objektiv 5×



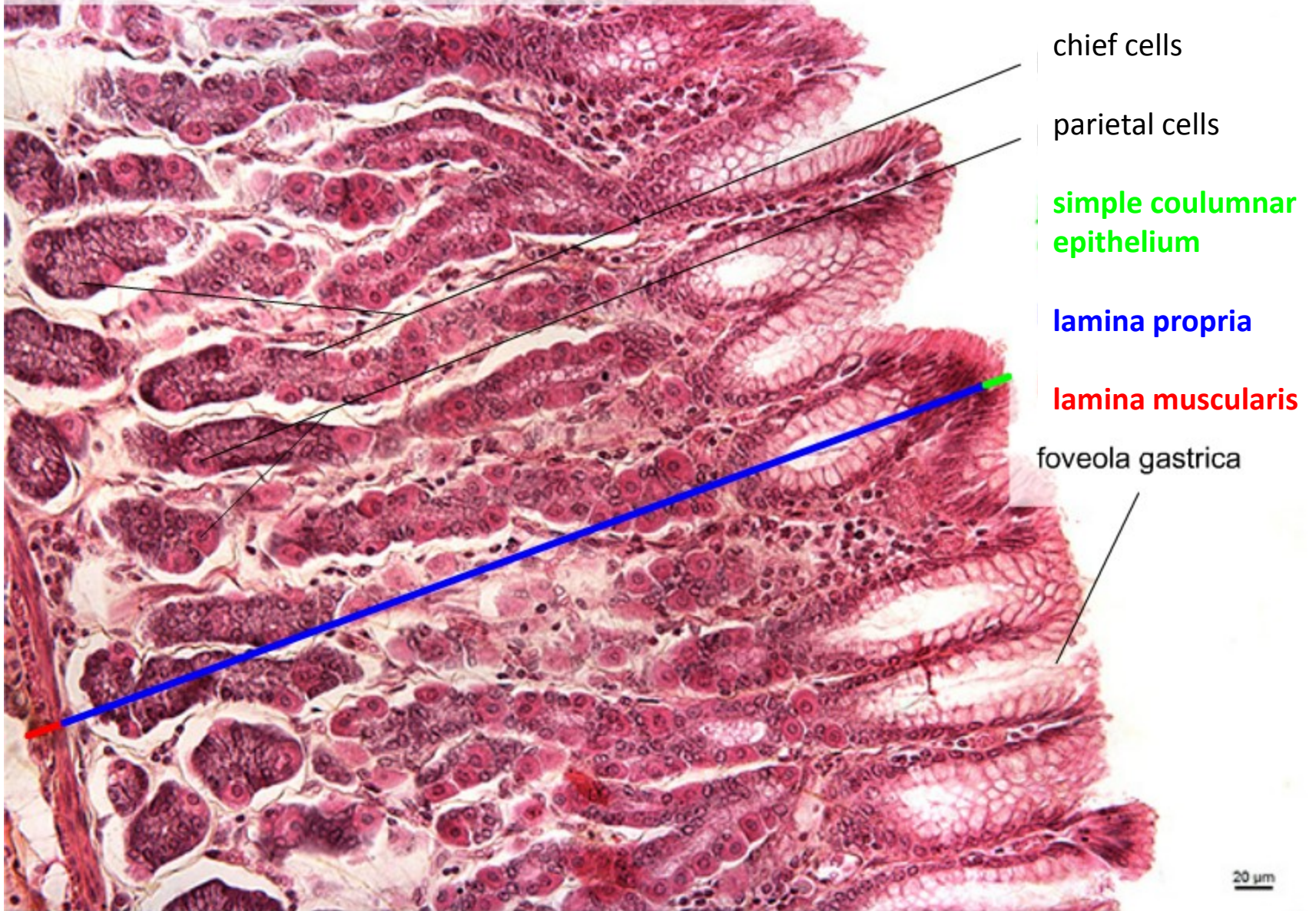
Fundus ventriculi - přehled, (HE), objektiv 2,5×



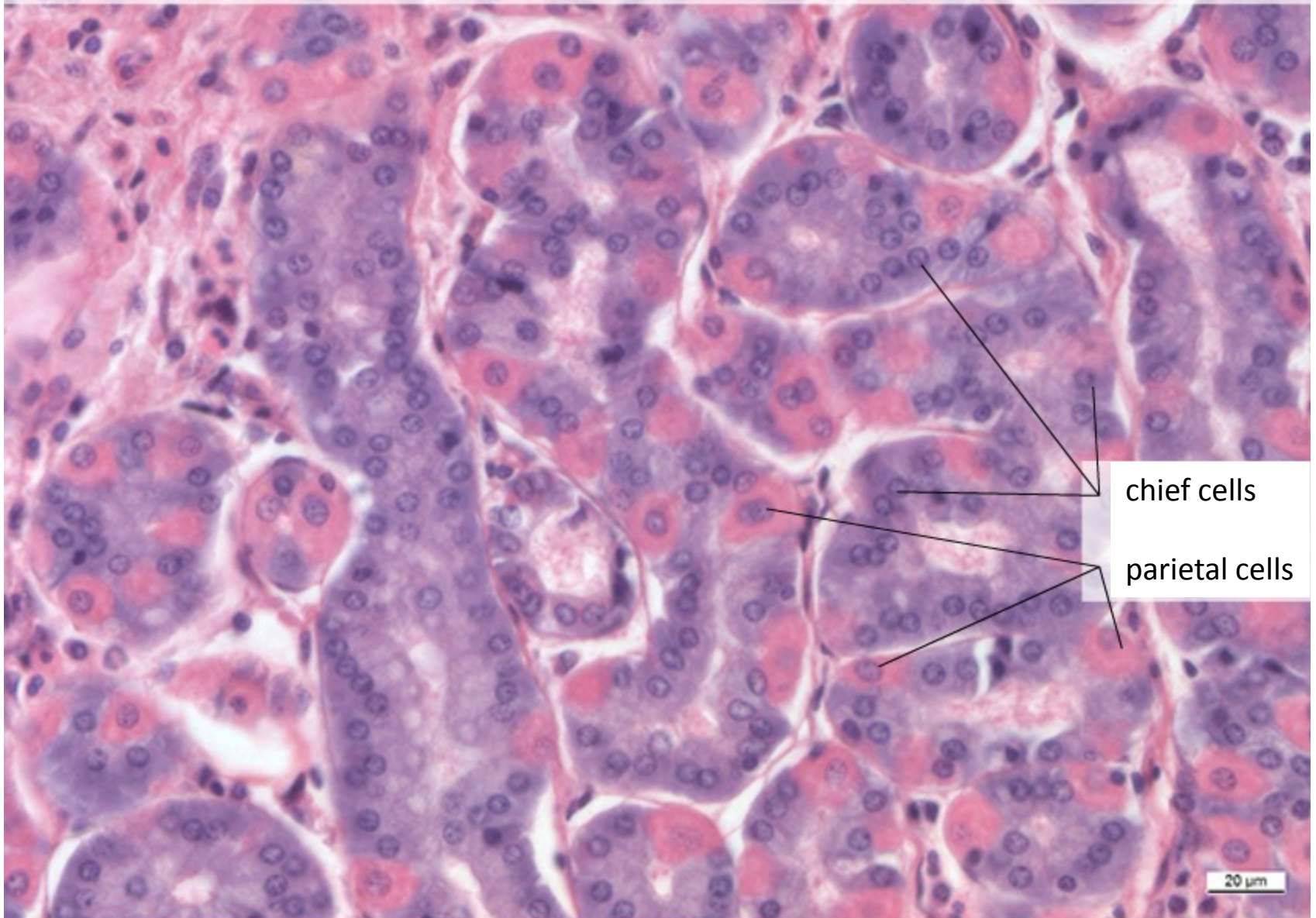
Fundus ventriculi – sliznice, (HE), objektiv 10×



Fundus ventriculi – foveolae a glandulae gastricae, (HE), objektiv 20×

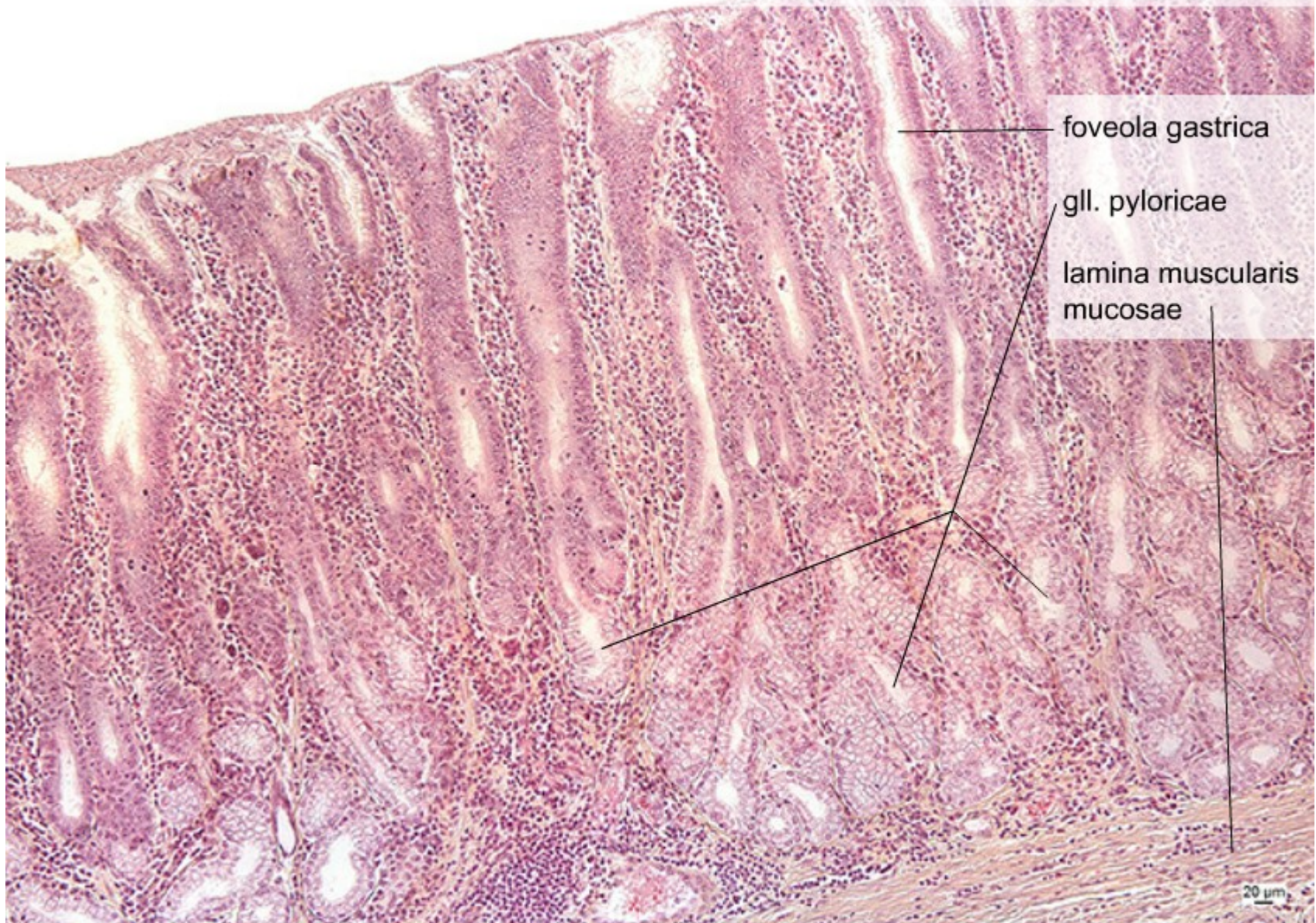


Fundus ventriculi – glandulae gastricae; detail, (HE), objektiv 20×

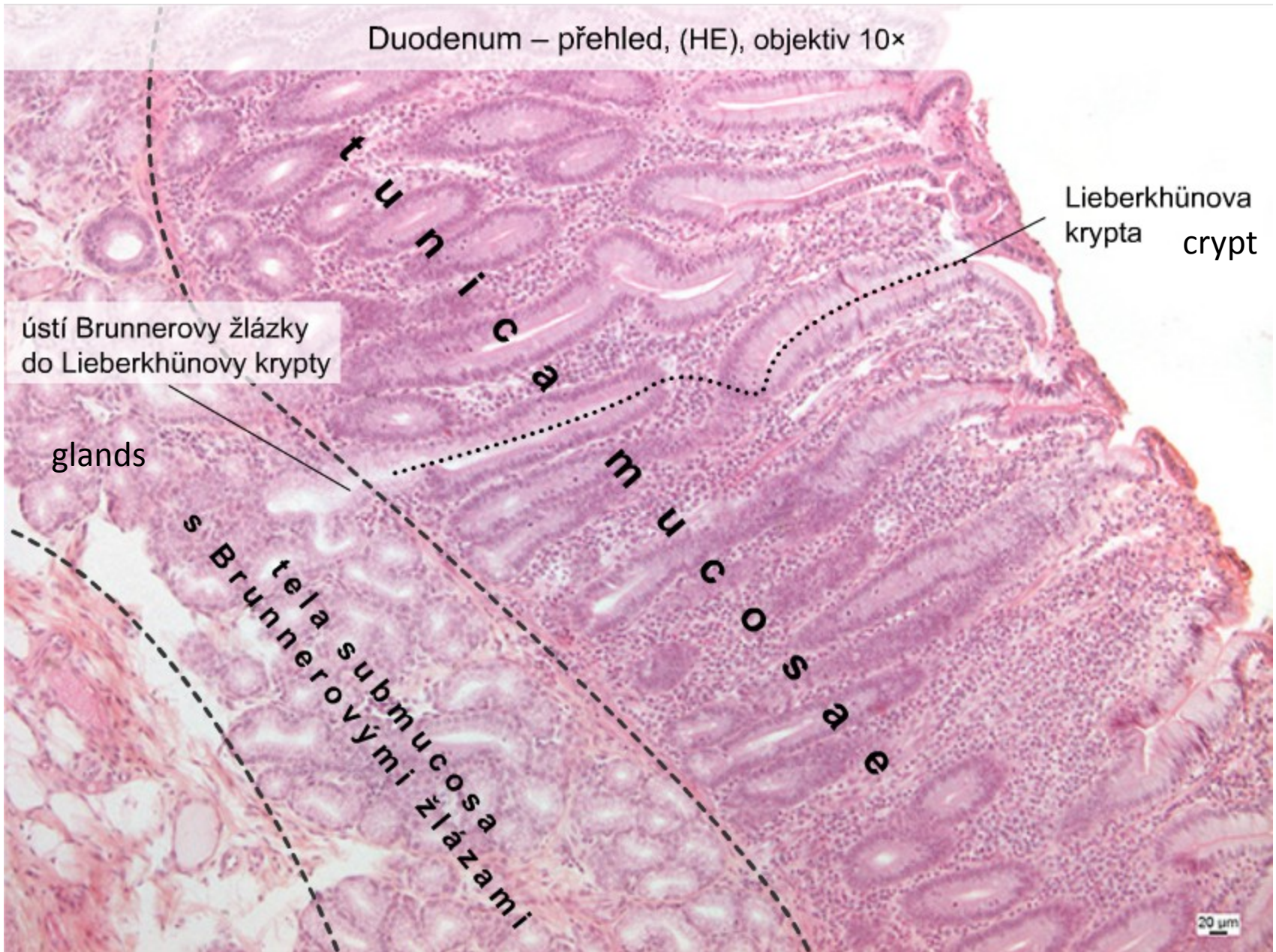


Pylorus - tunica mucosa

Pylorus – sliznice, (HE), objektiv 10×

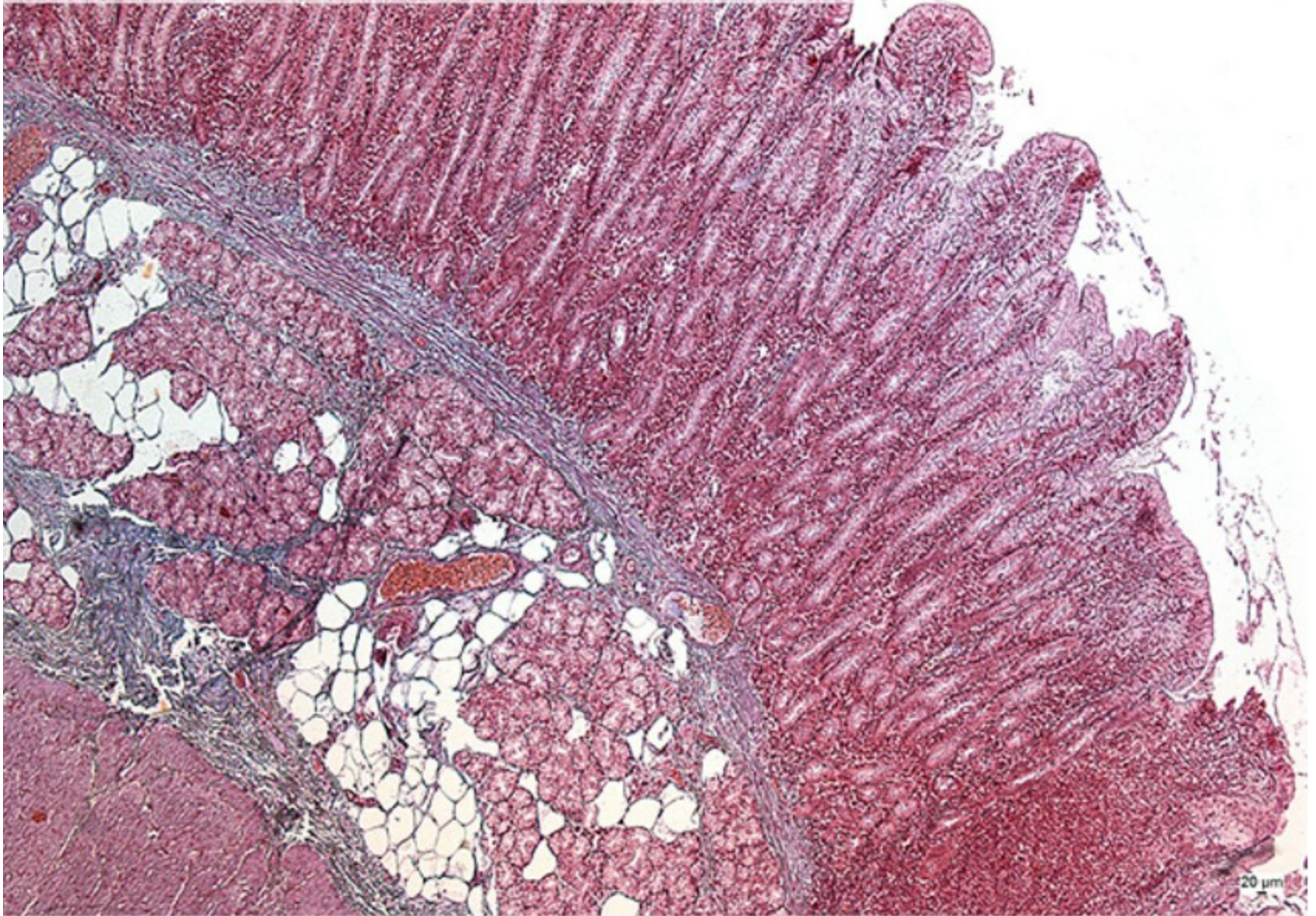


Duodenum – přehled, (HE), objektiv 10×

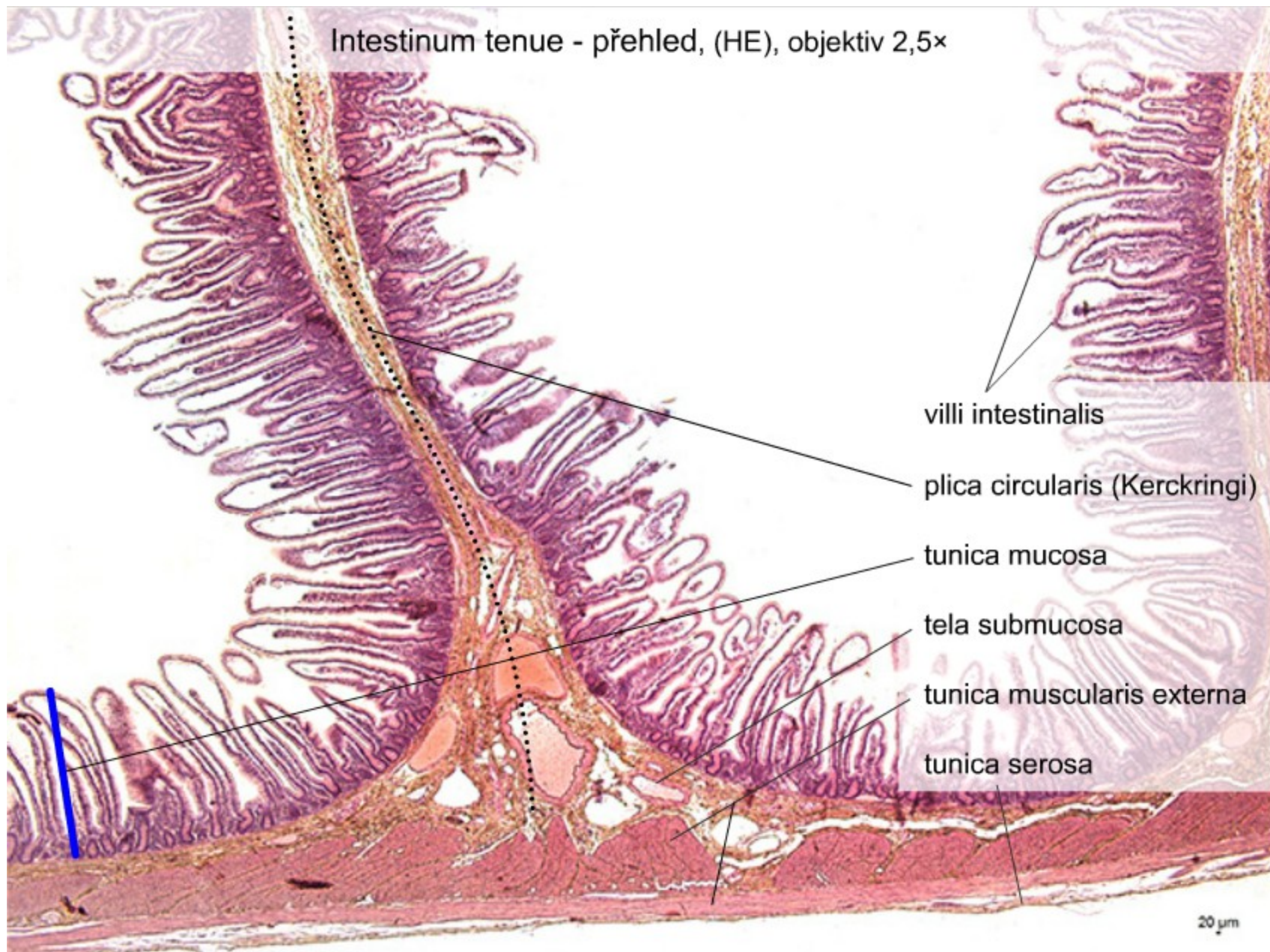


Duodenum – staining method: Azan

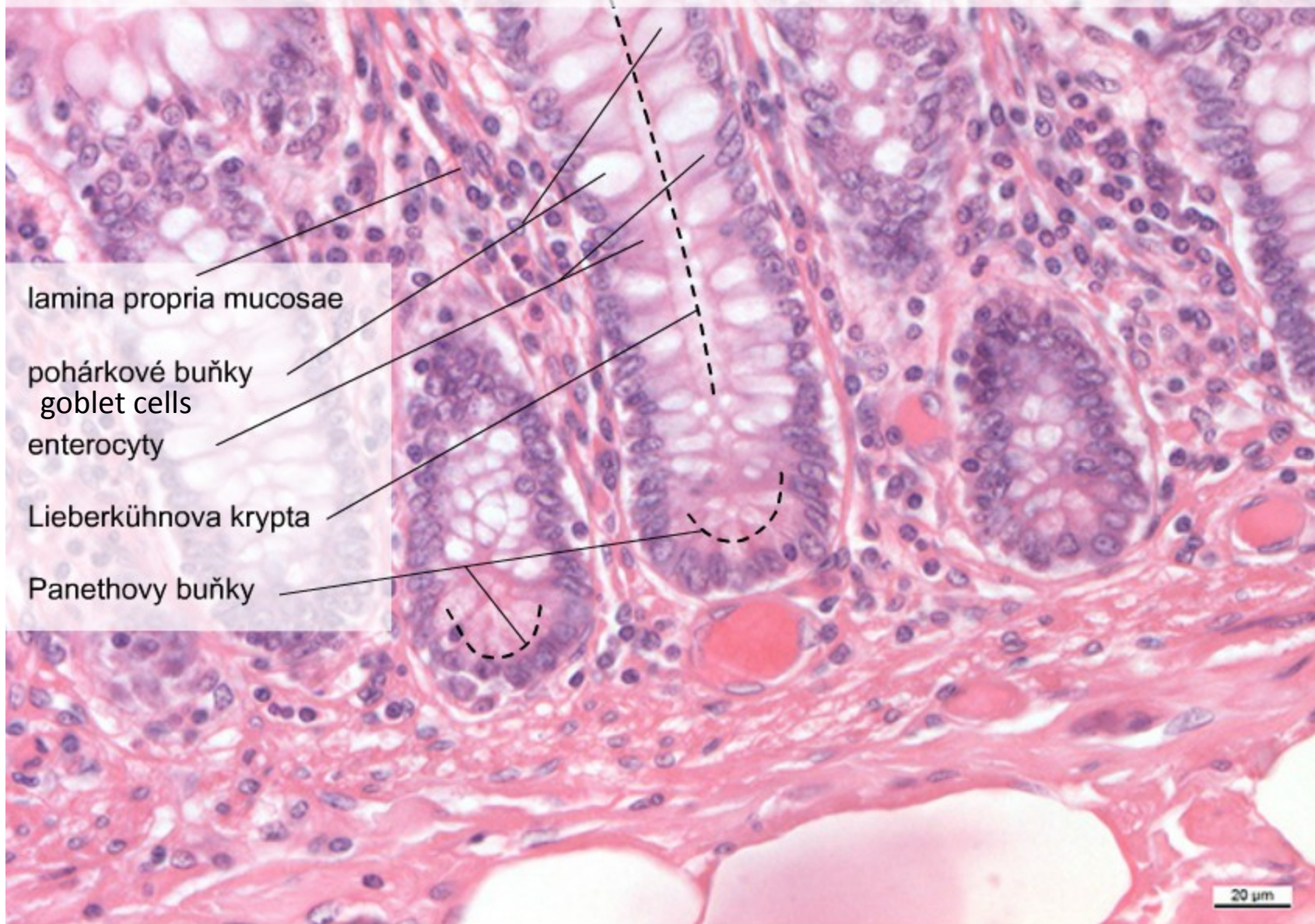
Barvení metodou Azan – duodenum, (AZAN), objektiv 5×



Intestinum tenue - přehled, (HE), objektiv 2,5×



Intestinum tenue – Panethovy buňky I, (HE), objektiv 40×



lamina propria mucosae

pohárkové buňky
goblet cells

enterocyty

Lieberkühnova krypta

Panethovy buňky

20 μ m

Intestinum tenue – Panethovy buňky II, (HE), objektiv 20×

