

ARTERIES, VEINS, LYMPHATIC SYSTEM

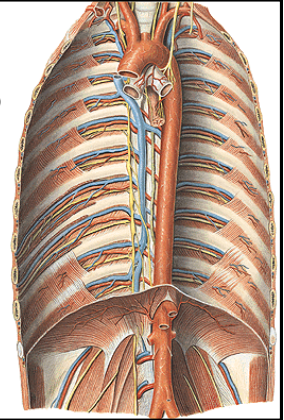
AORTA THORACICA

Parietal branches

- aa. intercostales post. (VAN)
- a. subcostalis
- a. phrenica sup.

Visceral branches:

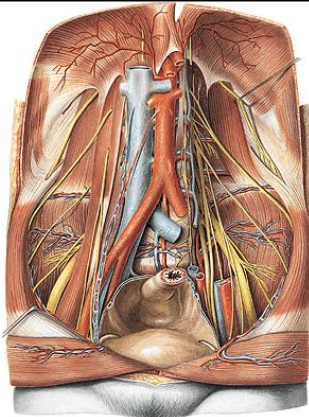
- rr. bronchiales
- rr. oesophagei
- rr. pericardiaci



AORTA ABDOMINALIS

Parietal branches

- a. phrenica inf. (a. suprarenalis sup.)
- 4 aa. lumbales
- a. sacralis mediana (a. lumbalis ima, rr. sacrales)



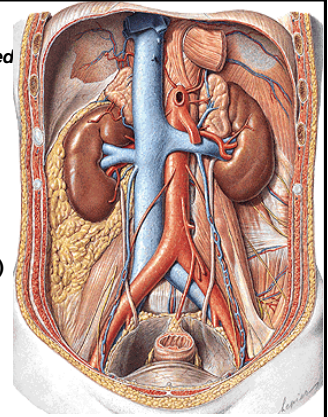
AORTA ABDOMINALIS

Visceral branches - paired

a. suprarenalis media

- a. renalis
 - r. uretericus
 - a. suprarenalis inf.
 - rr. praepelvici
 - r. retropelvicus

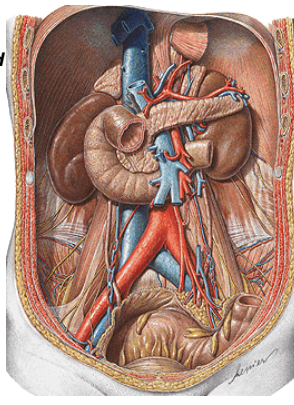
- a. testicularis (a. ovarica)
 - rr. ureterici
 - (r. tubarius)



AORTA ABDOMINALIS

Visceral branches – unpaired

- truncus coeliacus Th₁₂
- a. mesenterica sup. L₁
- a. mesenterica inf. L₃



TRUNCUS COELIACUS

a. gastrica sin.

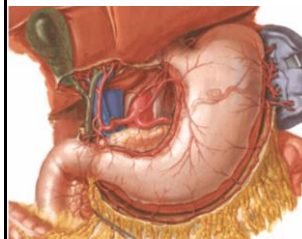
a. hepatica communis

- a. hepatica propria
- a. gastrica dx.
- r. dexter (a. cystica)
- r. sinister

a. gastroduodenalis

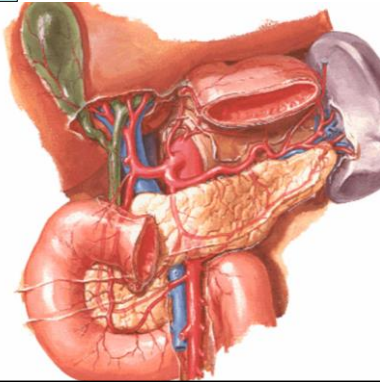
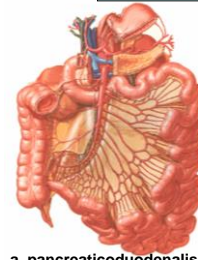
- a. gastropiploica dx.
- a. pancreaticoduodenalis. sup.

a. lienalis

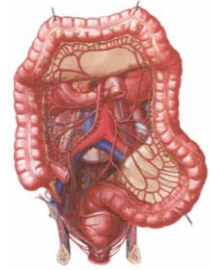


ARTERIA LIENALIS

- rr. pancreatici
- a. gastroepiploica sin.
- aa. gastricae breves
- rr. lienales

**ARTERIA MESENTERICA SUP.**

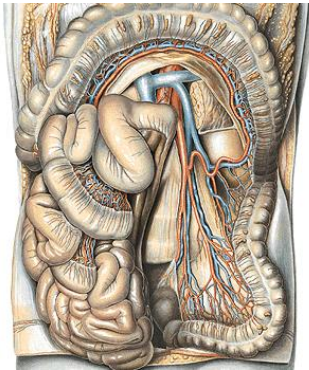
- a. pancreaticoduodenalis inf.
- aa. jejunales et ilei (10-18)
- a. ileocolica



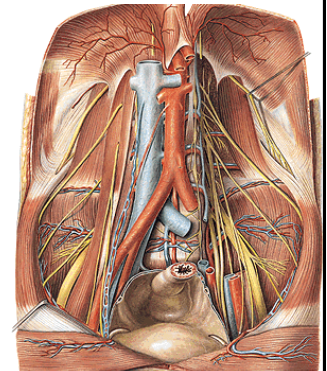
- a. colica dx.
- a. colica media

ARTERIA MESENTERICA INFERIOR

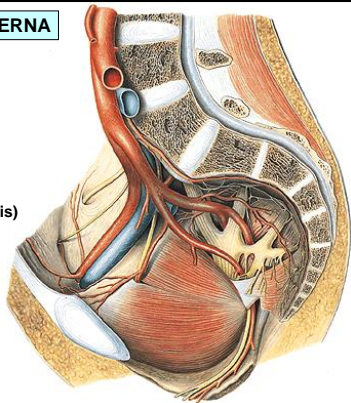
- a. colica sinistra
- aa. sigmoideae
- a. rectalis sup.
- anastomosis magna (Halleri)

**ARTERIA ILIACA COMMUNIS**

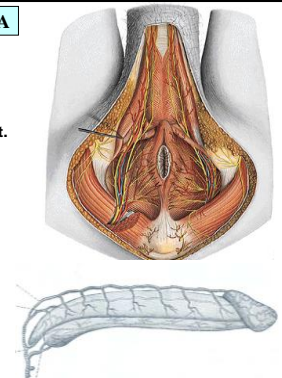
- A. iliaca externa
- A. iliaca interna
- (bifurcatio aortae L₄)

**ARTERIA ILIACA INTERNA****Parietal branches**

- a. iliolumbalis
- a. sacralis lat.
- a. obturatoria
(r. pubicus - corona mortis)
- a. glutea sup.
- a. glutea inf.
- a. pudenda interna

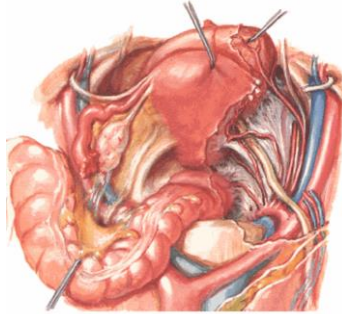
**ARTERIA PUDENDA INTERNA**

- a. rectalis inf.
- a. perinealis – rr. scrotales post.
(rr. labiales post.)
- a. penis (a. clitoridis)
 - a. profunda penis (clitoridis)
 - a. dorsalis penis (clitoridis)

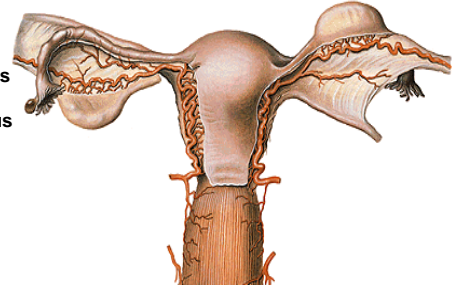


ARTERIA ILIACA INTERNA*Visceral branches*

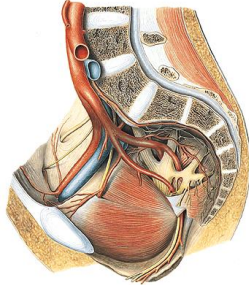
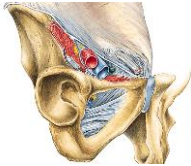
- aa. vesicales sup.
(a. umbilicalis)
- a. vesicalis inf.
- a. rectalis media
- ♂ a. ductus deferentis
- ♀ a. uterina

**ARTERIA UTERINA**

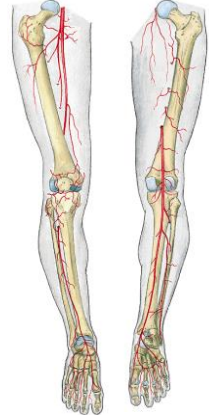
- r. uretericus
- a. vaginalis ant. et post.
- rr. uterini
- r. tubarius
- r. ovaricus

**ARTERIA ILIACA EXTERNA**

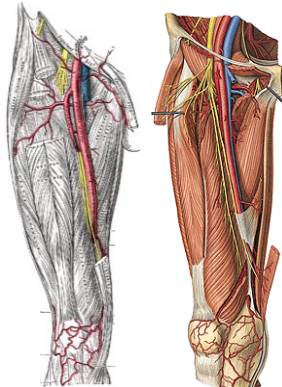
- a. epigastrica inf.
 - r. pubicus (corona mortis)
- a. cremasterica
(a. ligamenti teretis)
- a. circumflexa ilium profunda

**ARTERIES OF THE LOWER EXTREMITY**

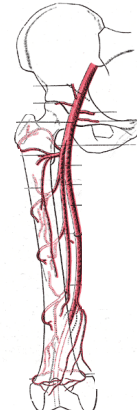
- a. femoralis
(lacuna vasorum, trigonum femorale, canalis adductorius, hiatus tendineus)
- a. poplitea
(fossa poplitea)
- a. tibialis anterior
(a. dorsalis pedis)
- a. tibialis posterior
(malleolus medialis, a. plantaris medialis, a. plantaris lateralis)

**ARTERIA FEMORALIS**

- A. epigastrica spf.
- A. circumflexa ilium spf.
- Aa. pudendae ext.
- A. profunda femoris
- Rr. musculares
- A. genus descendens

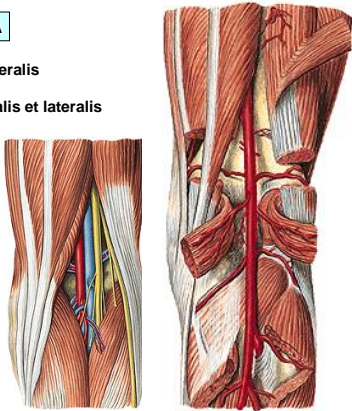
**ARTERIA PROFUNDA FEMORIS**

- A. circumflexa femoris medialis
(r. superficialis et profundus)
- A. circumflexa femoris lat.
(r. ascendens et descendens)
- A. perforans prima
(a. nutritia femoris sup.)
- A. perforans secunda
- A. perforans tertia
(a. nutritia femoris inf.)



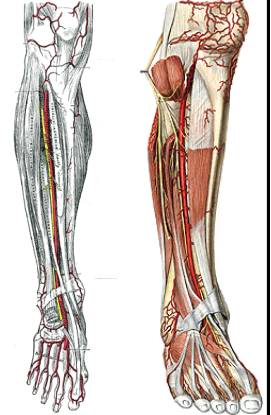
ARTERIA POPLITEA

- A. suralis medialis et lateralis
- A. genus superior medialis et lateralis
- A. genus media
- A. genus inferior medialis et lateralis
- A. tibialis ant.
- A. tibialis post.



ARTERIA TIBIALIS ANTERIOR

- A. recurrens tibialis post.
- A. recurrens tibialis ant.
- Rr. musculares
- A. malleolaris ant. med. et lat.
- A. dorsalis pedis



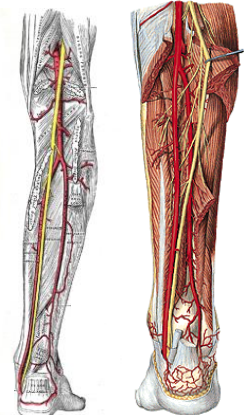
ARTERIA DORSALIS PEDIS

- Aa. tarseae med.
- A. tarsea lat.
(a. digitalis dorsalis V.)
- A. arcuata
(3 aa. metatarsae dorsales,
aa. digitales dorsales)
- R. plantaris prof.
- A. metatarsea dorsalis prima
- aa. digitales dorsales



ARTERIA TIBIALIS POSTERIOR

- R. circumflexus fibulae
- A. peronea (fibularis)
- Rr. musculares
- A. nutritia tibiae
- Rr. malleolares med.
- Rr. calcanei med.
- A. plantaris lat.
- A. plantaris med.



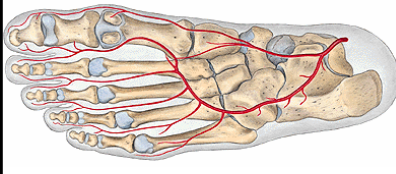
A. PLANTARIS LATERALIS

- arcus plantaris
(4 aa. metatarsae plantares,
aa. digitales plantares)

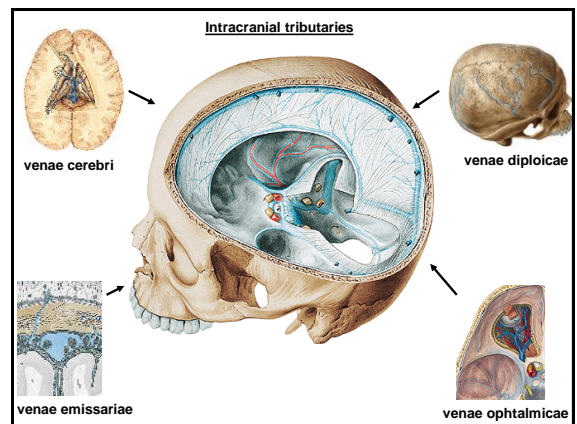
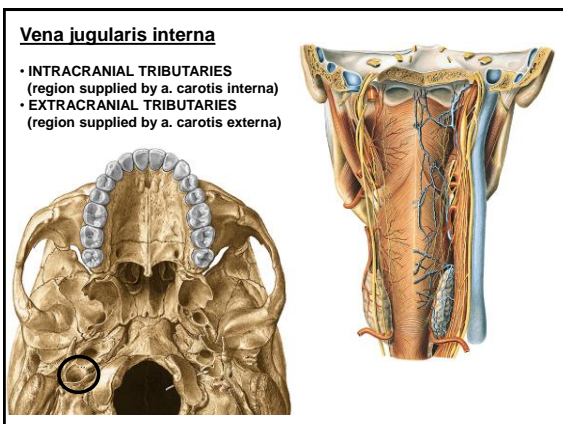
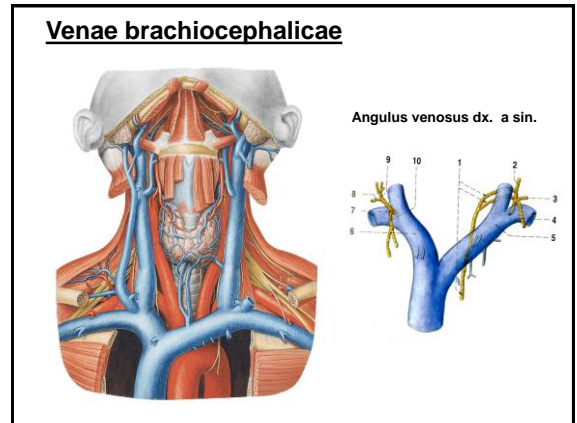
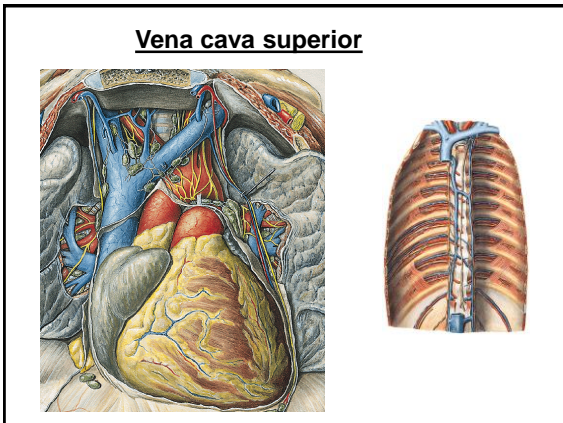
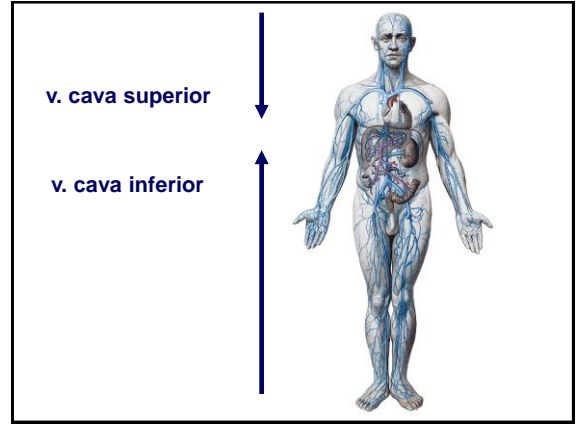
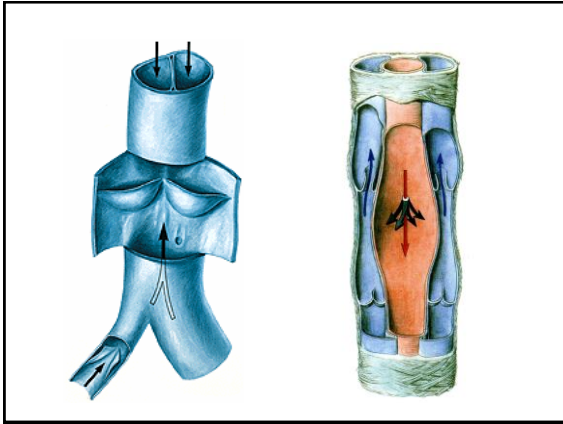


ARTERIA PLANTARIS MEDIALIS

- ramus superficialis et profundus



VEINS



Extracranial tributaries

Anterior (separately, from stem...)

- v. facialis
- v. lingualis
- v. thyroidea superior
- v. thyroidea media

Medial (separately)

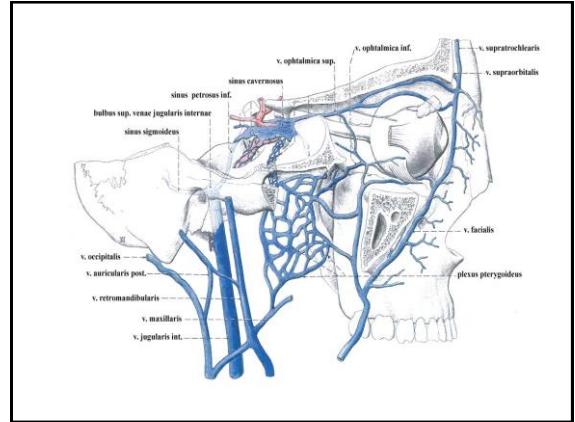
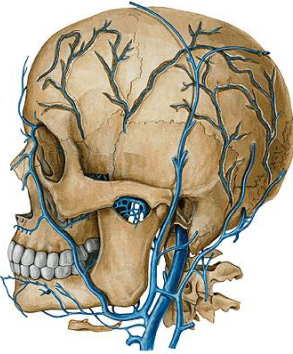
- v. pharyngea (plexus pharyngeus)

Posterior (vena jugularis externa)

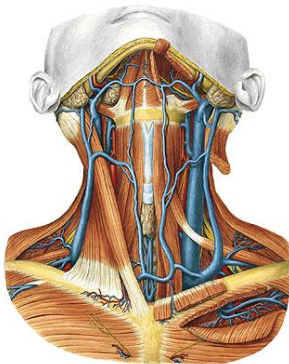
- v. auricularis posterior
- v. occipitalis

Stem (vena retromandibularis)

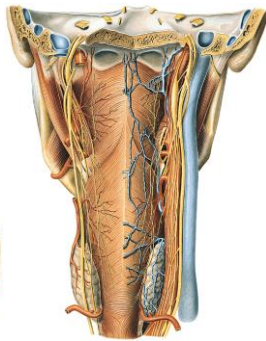
- v. temporalis superficialis
- v. maxillaris (plexus pterygoideus)



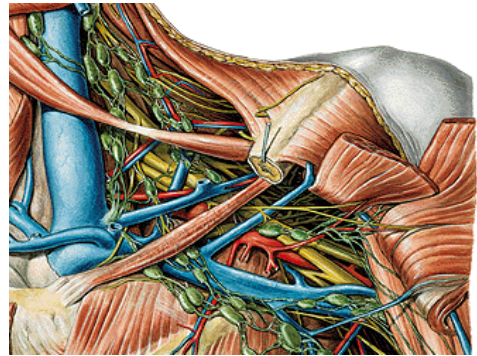
Vena jugularis anterior



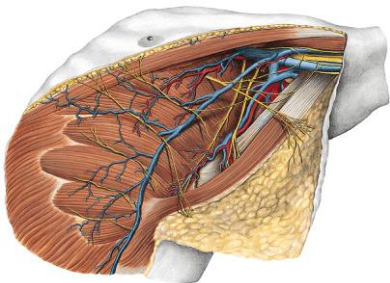
Venae pharyngeae (plexus pharyngeus)



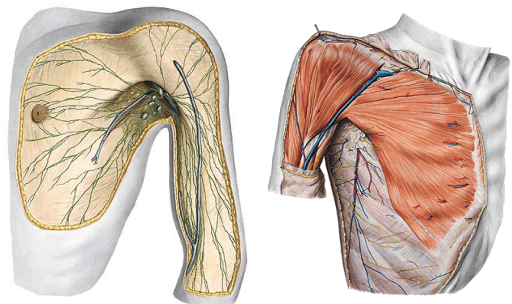
Vena subclavia

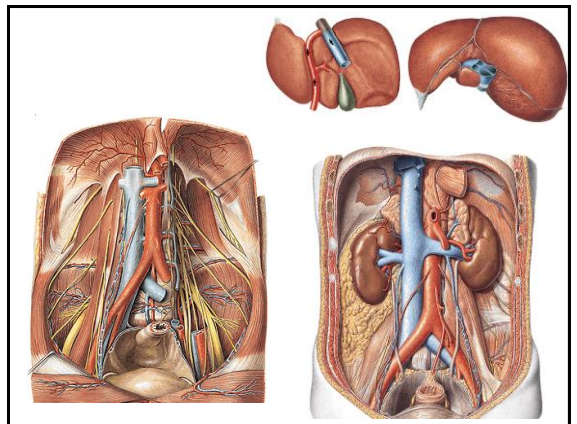
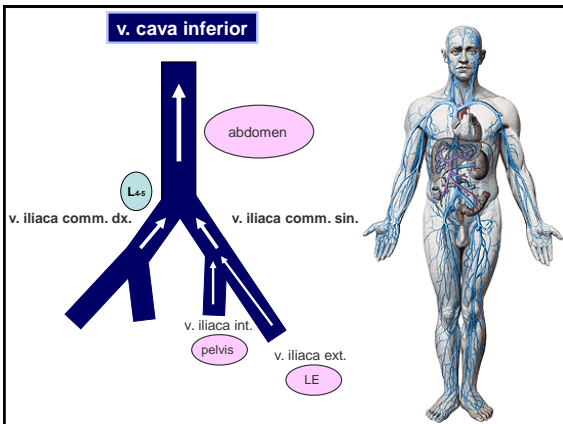
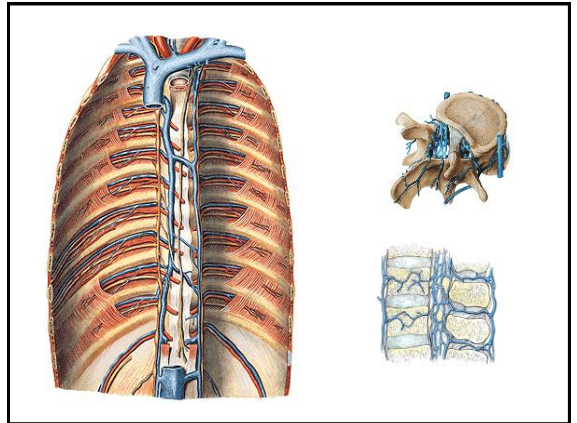
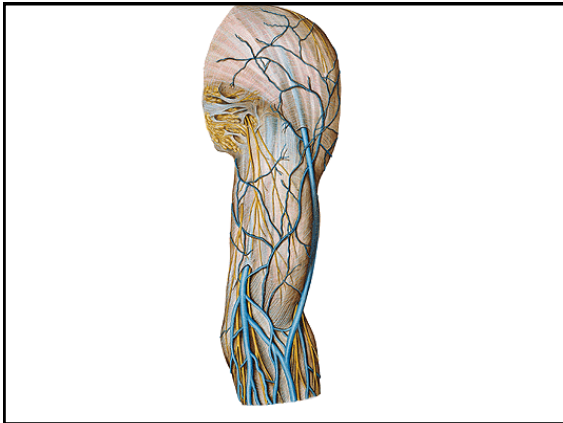
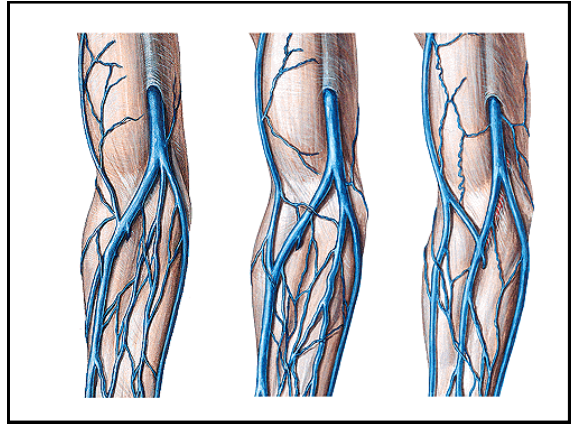
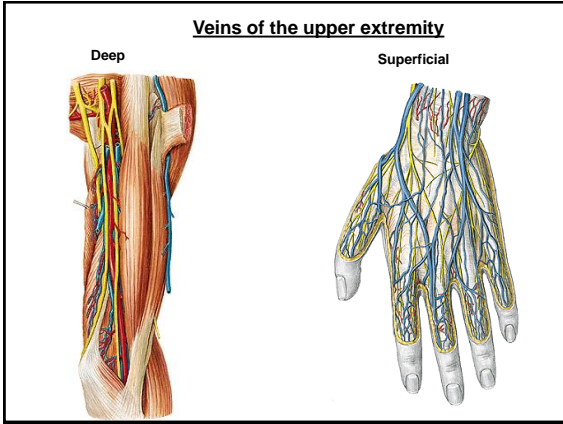


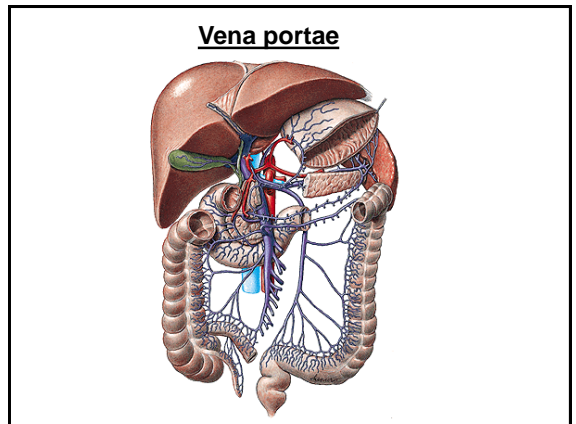
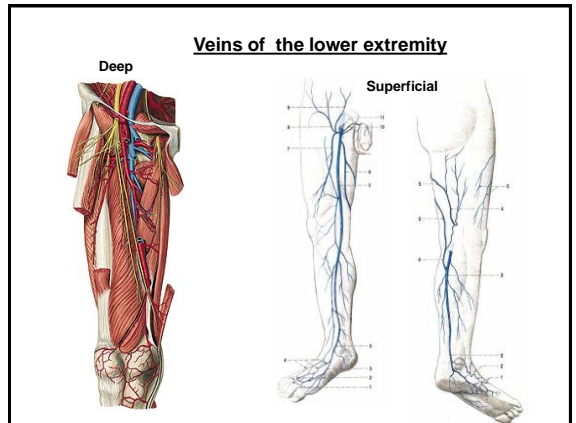
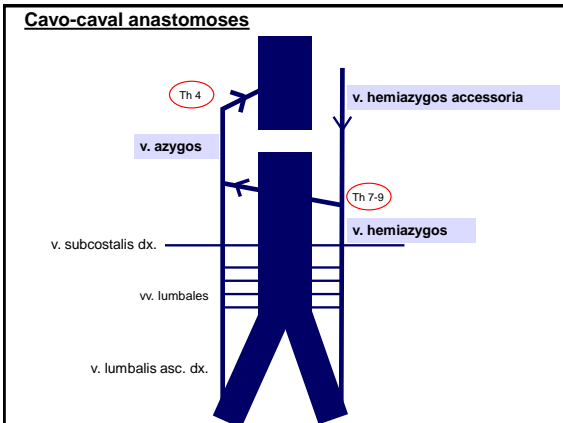
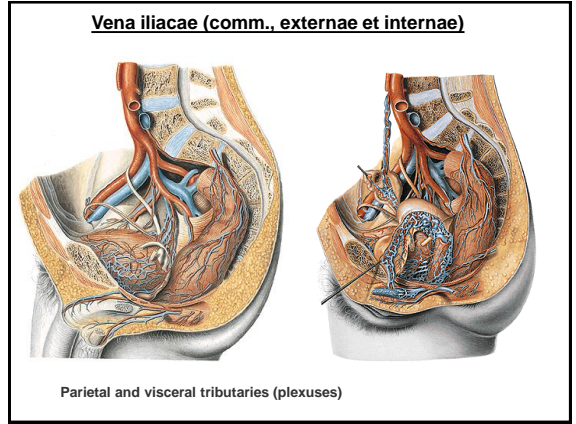
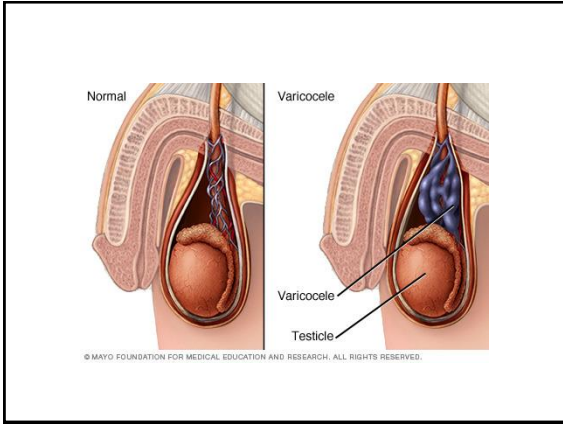
Vena axillaris

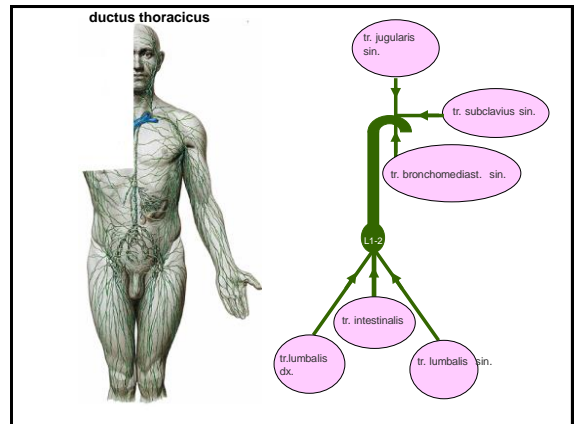
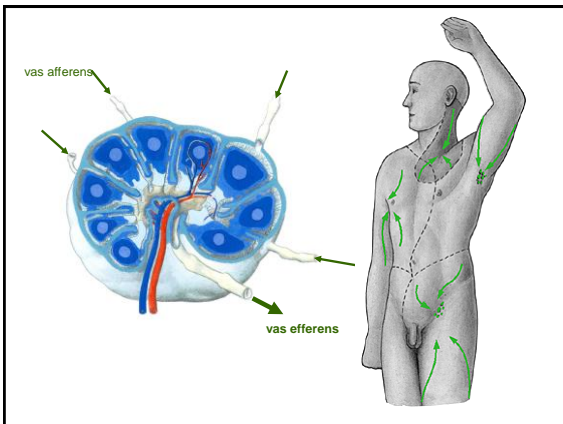
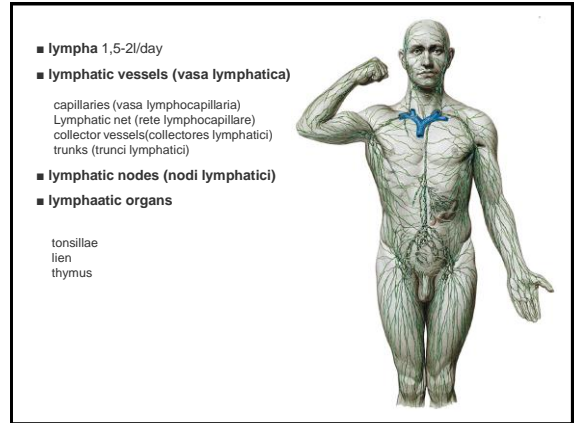
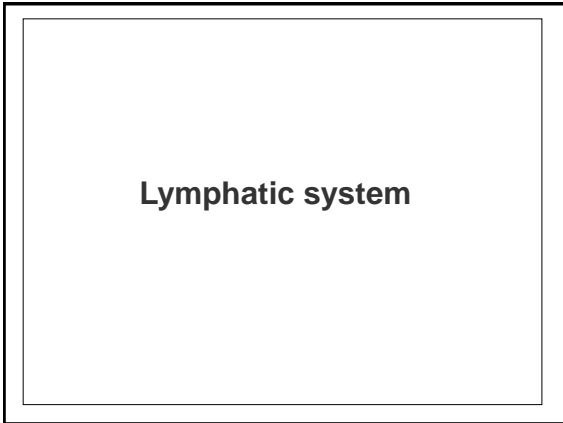
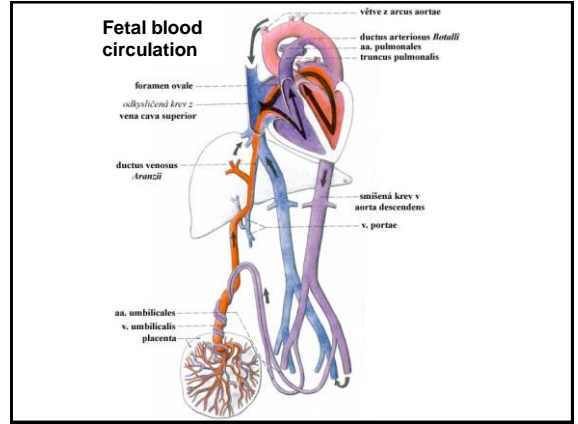
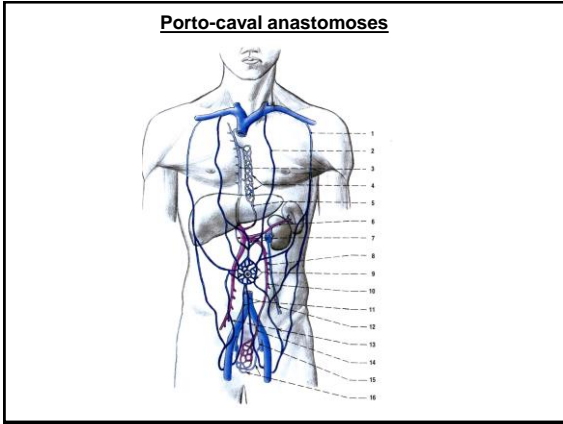


Vena thoracoepigastrica and vena cephalica










n.l. axillares

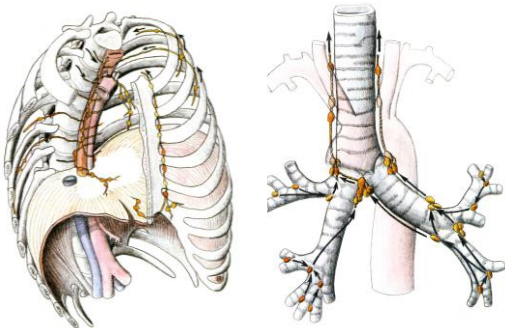
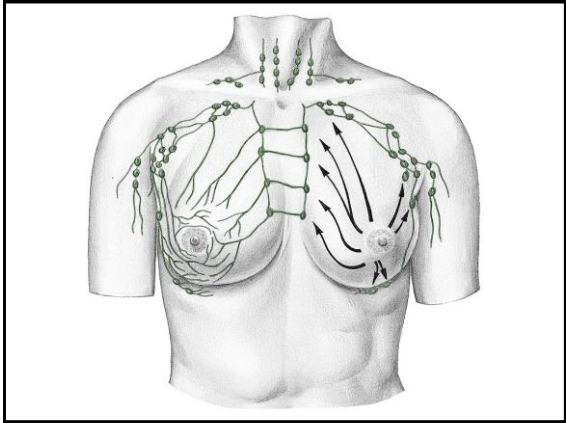
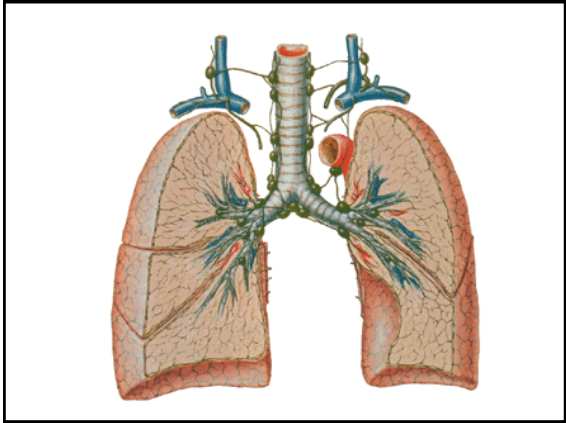
- n.l. laterales (brachiales)
- n.l. subscapulares
- n.l. pectorales
(n.l. interpectorales)
- n.l. centrales
- n.l. apicales

↓

truncus subclavius

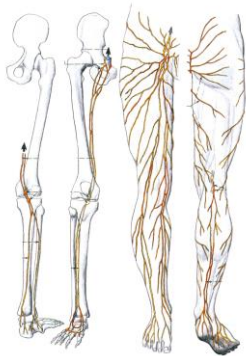
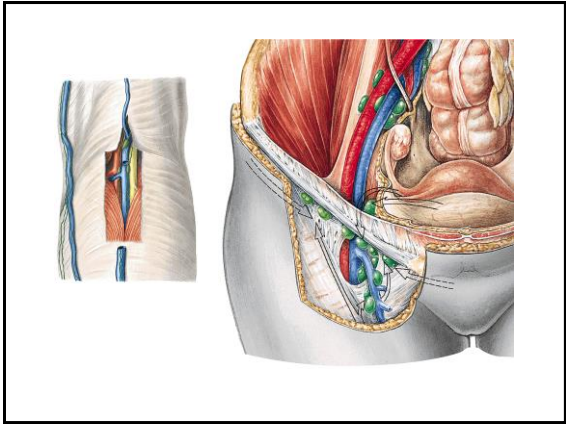


Lymphatic vessels of the thorax

Lymphatic vessels of the lower extremity

- **superficial collectors**
 - posterior
 - lateral
 - medial
- **deep collectors**
 - n.l. poplitei superf.
 - n.l. inguinales superf.
- **deep collectors**
 - n.l. poplitei prof.
 - n.l. inguinales prof.

Lymphatic vessels of the pelvis

- nodi lymphatici iliaci externi
- nodi lymphatici iliaci interni
- parietal - sacrales
- visceral - paravesicales
parauterini
paravaginales (paraprostatici)
pararectales

Lymphatic nodes of the abdominal cavity

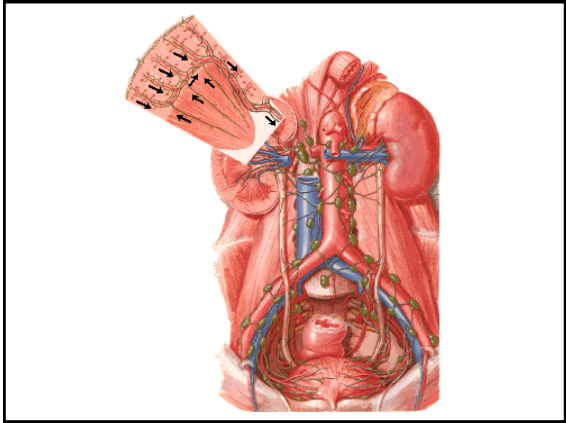
nodi lymphatici iliaci comm.

↓

nodi lymphatici lumbales
parietal
visceral from paired organs

↓

truncus lumbalis d.x. et sin.



Lymphatic nodes of the unpaired organs

truncus intestinalis

↑

nodi lymphatici coeliaci

- gastrici
- gastroepiploici
- hepatici
- pancreaticoduodenales
- pancreatici
- lienales
- mesenterici
- ileocolici
- colici
- mesenterici inferiores

