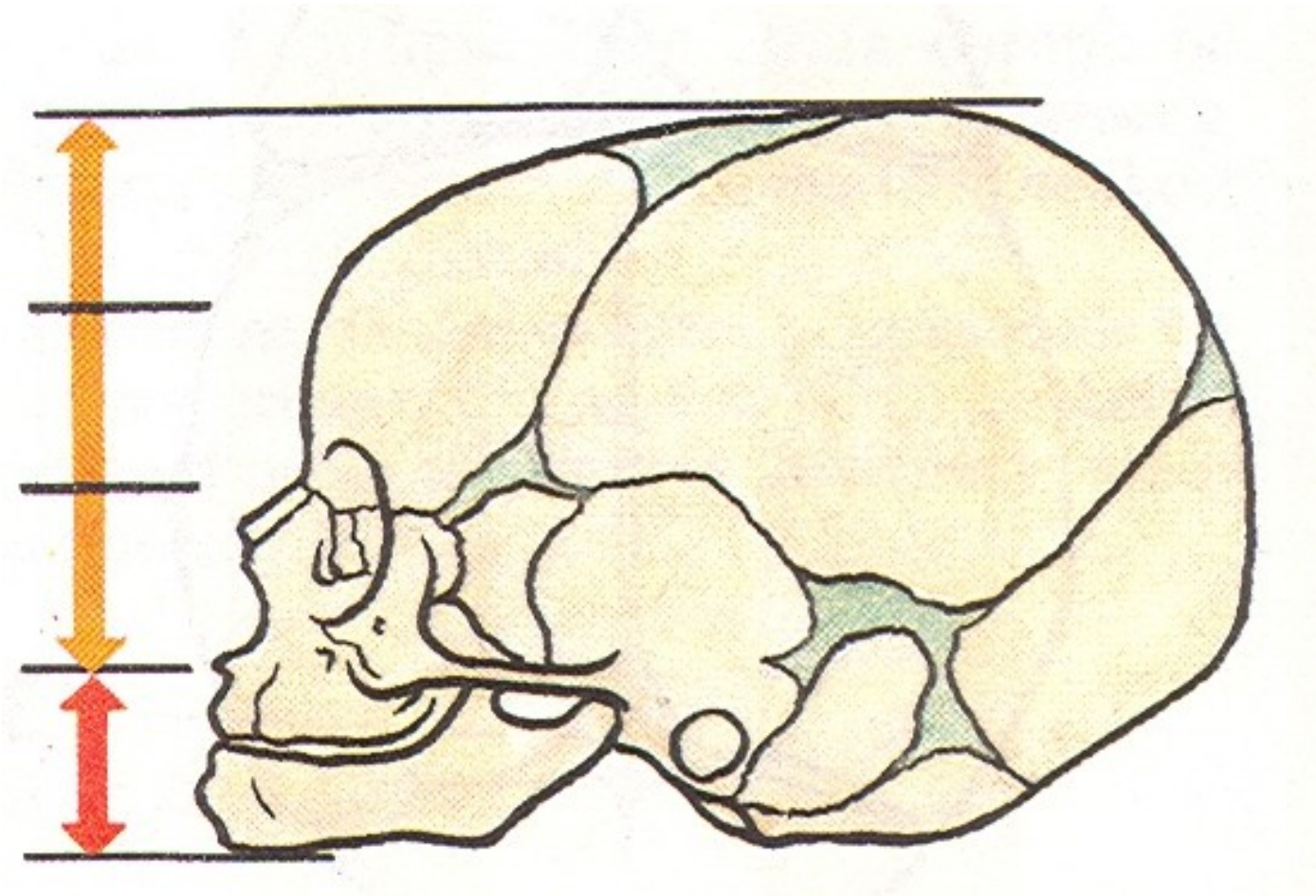
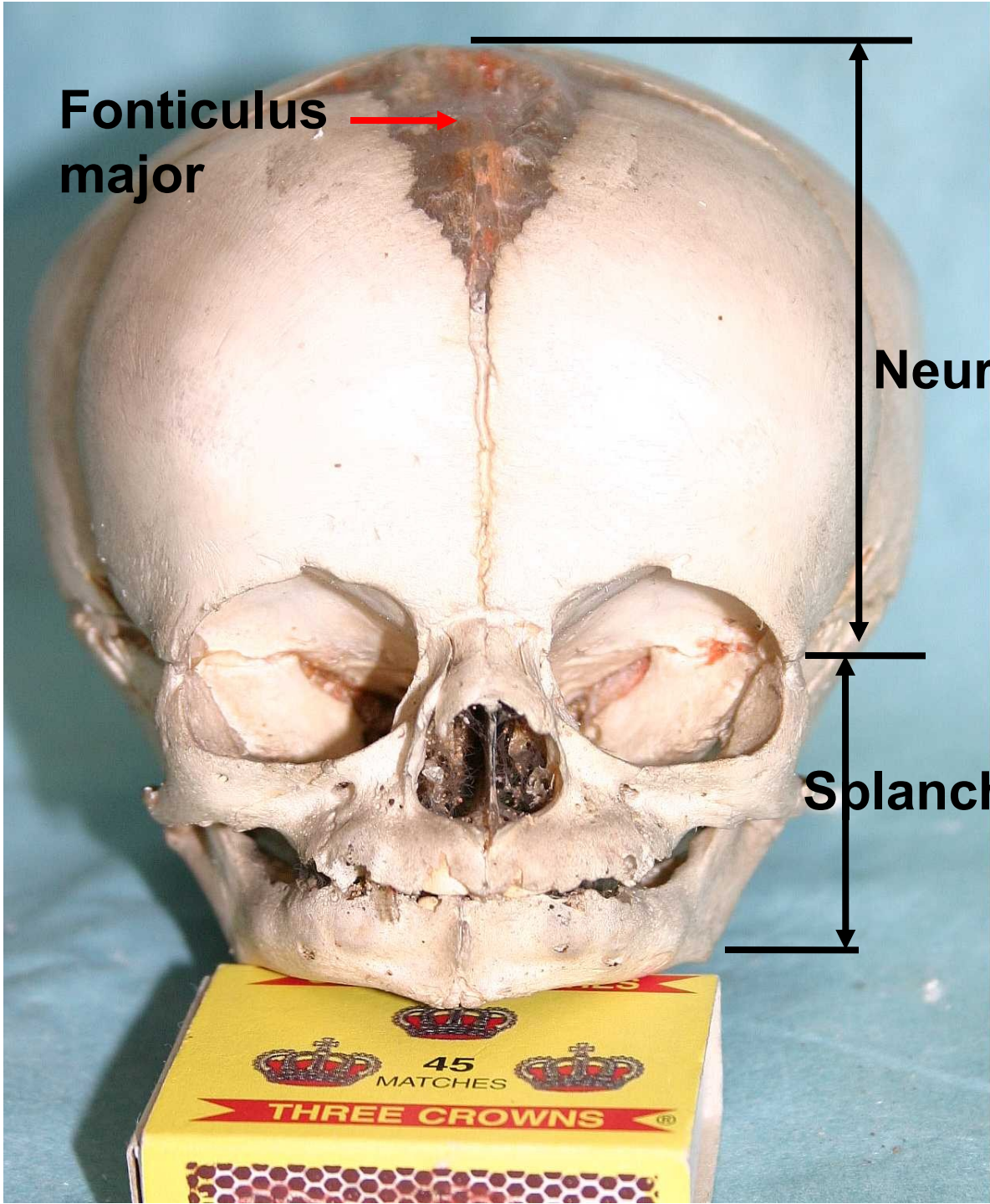


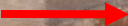
**Newborn skull**

Neurocranium : Splanchnocranium  
**8:1**



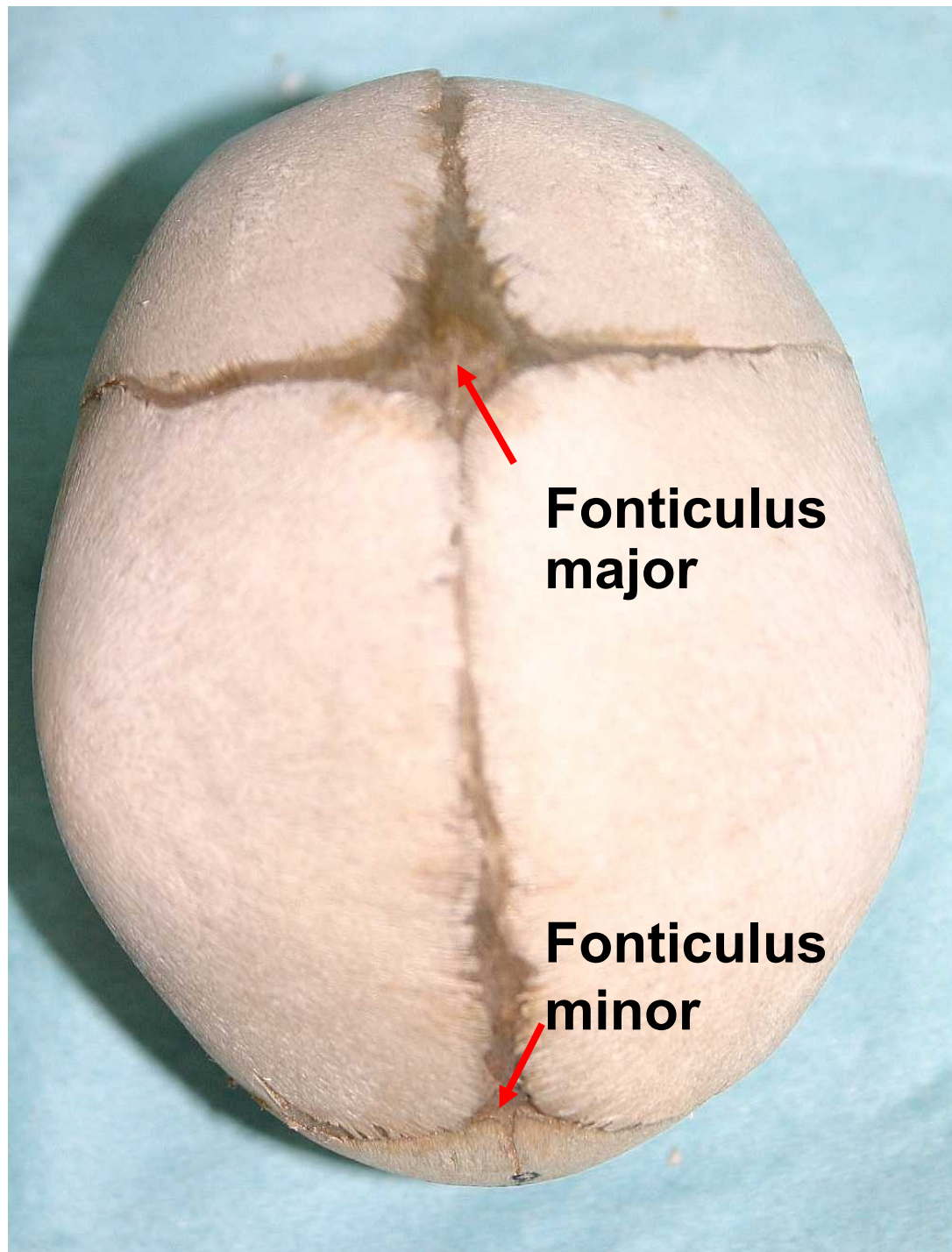


**Fonticulus  
major**



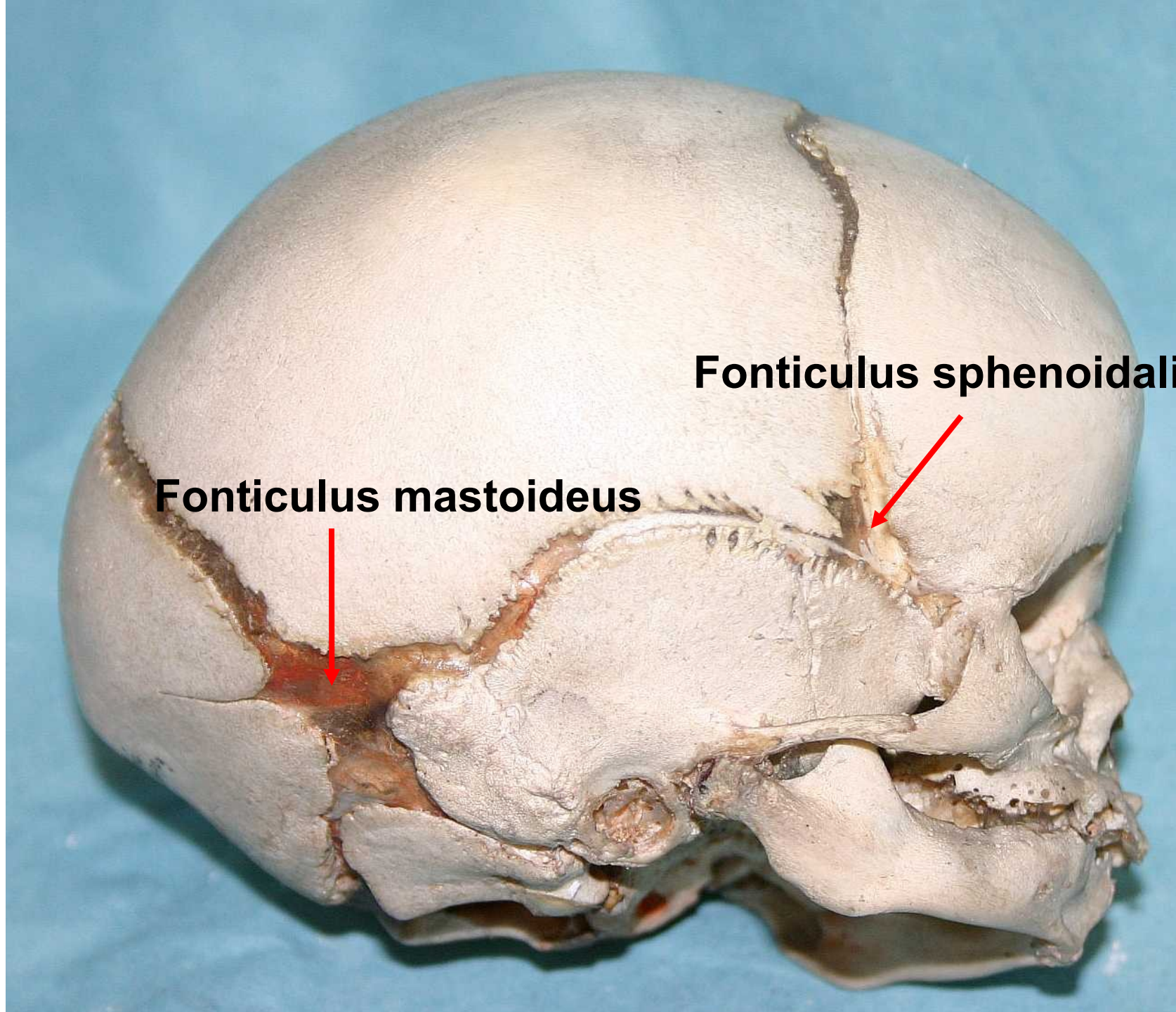
**Neurocranium**

**Splanchnocranium**



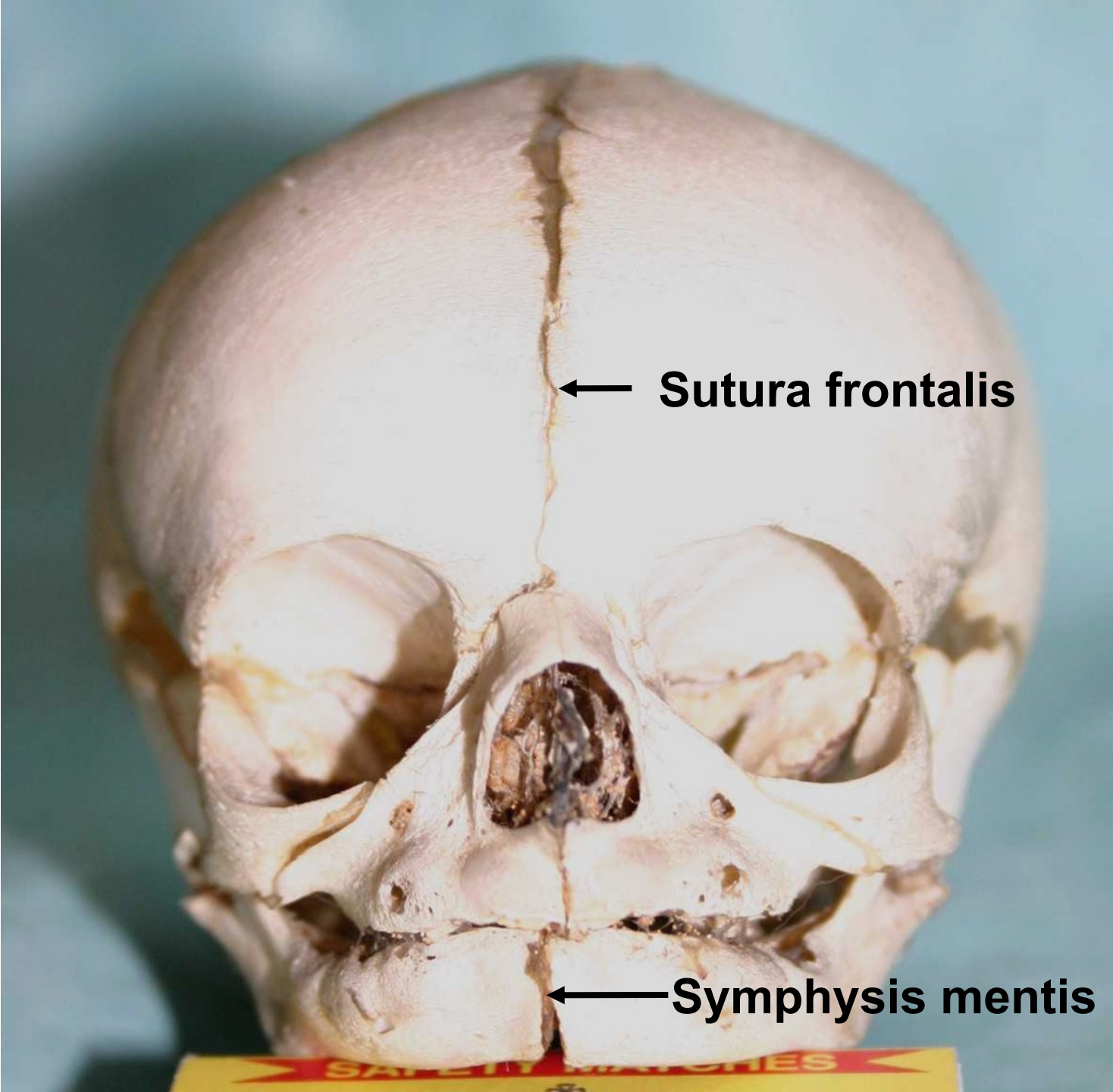
**Fonticulus  
major**

**Fonticulus  
minor**



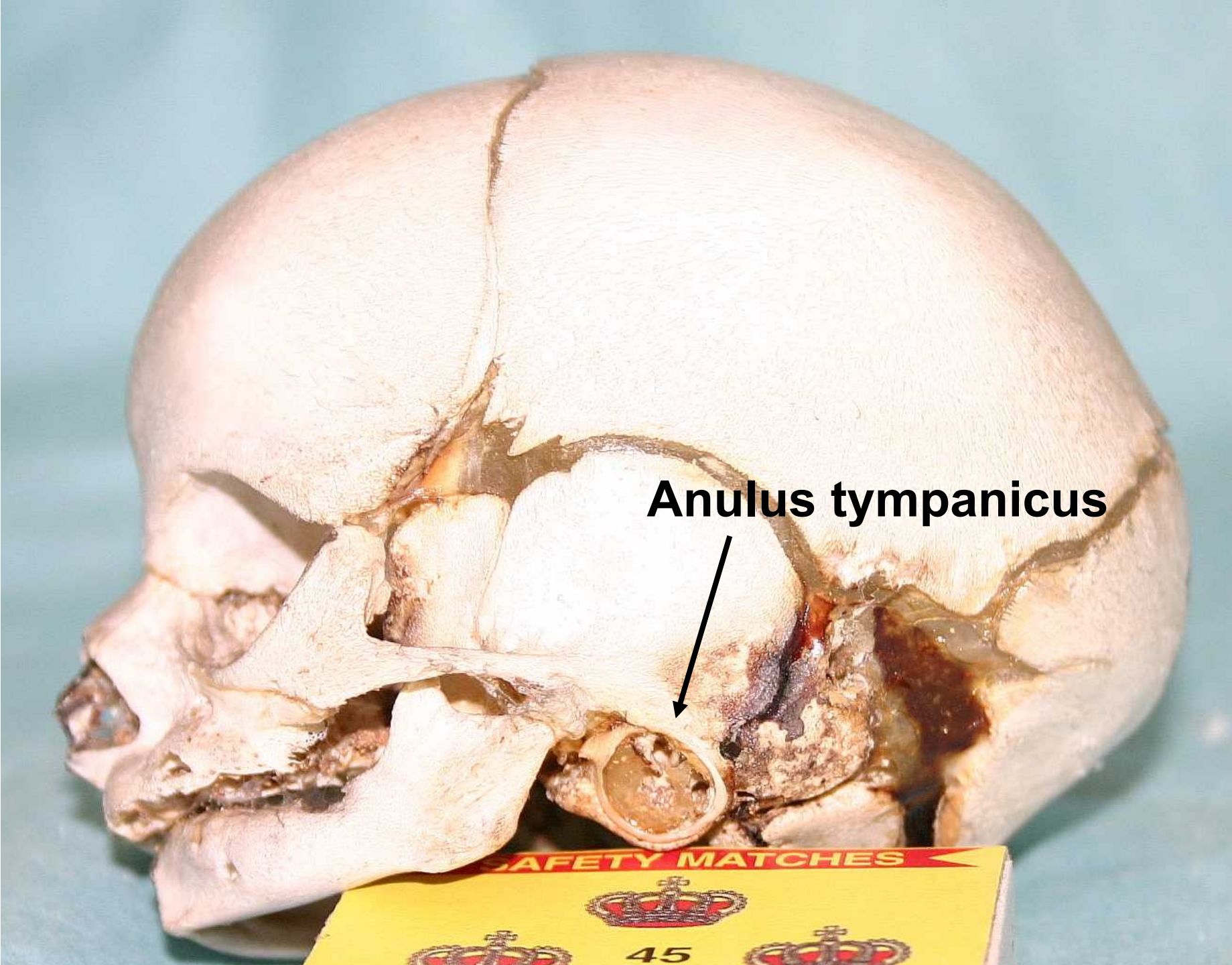
**Fonticulus mastoideus**

**Fonticulus sphenoidalis**



← **Sutura frontalis**

← **Symphysis mentis**



**Anulus tympanicus**

# Newborn skull

- capacity 370 ccm
- circumference 34 cm
- length 11-12 cm, width 9-10 cm
- big neurocranium
- fonticuli (major, minor, sphenoidalis, mastoideus)
- low splanchnocranium
- without processus alveolares (maxillae et mandibulae)
- without paranasal sinuses
- sutura frontalis
- anulus tympanicus
- symphysis menti
- mandibular angle 150 - 170°

