



# 1st declension

a-stems

# Read

- glandula linguae, in gutta tincturae, cum herbis, ruptura calvae, fracturae vertebrarum, ligamenta rupta, spondyli laesi, pneumonia acuta, scatula adlata, vena portae, atherosclerosis modica, carcinoma mammae, haemorrhagia periculosa, hydrocephalia, diphtheria pernicioosa

## Fill in the correct endings

fractura uln\_, in aort\_, ad scatul\_, sine

aqu\_, rima palpebrar\_, in glandul\_

lingu\_, sub aort\_, fracturae complicat\_,

pneumonia aspiratori\_, aqua menth\_,

arteri\_ coronari\_, vena port\_, post

pneumoni\_ aspiratori\_, ad scatul\_ adlat\_

# Fill in full dictionary entry

columna, \_\_, \_

lagoena, \_\_, \_

dispnoe, \_\_, \_

medulla, \_\_, \_

linea, \_\_, \_

rhaphe, \_\_, \_

# Decline Greek terms

diploe

chole

diabetes

dyspnoe

systole

ascites

# Translate

lagoena aquae destillatae, causa diphtheriae,  
sine allergia, fractura ulnae, secundum naturam,  
operatio necessaria, palatum durum, trachea  
inflammata, columna vertebrarum, fractura  
mandibulae, rhapshe mediana, tuba auditiva,  
tonsillae palatinae, tunica mucosa, vesica fellea,  
rima in costa spuria



# 2nd declension

o-stems



# Decline

praeventia

morbis

ganglion

virus periculosum


diabetes mellitus

methodus nova



## Fill in the correct endings

fractura cost\_\_\_\_ (pl), medicament\_ contra  
scarlatin\_, bacillus diphtheri\_, muscul\_  
lingu\_, period\_ morb\_, sine sept\_ nas\_,  
cum ven\_ port\_, ad raph\_, propter  
anaemi\_ periculos\_, pro adult\_, causa  
fractur\_ complicat\_



diamet\_ transvers\_ (Nom), propter fissur\_  
palat\_ congenit\_, sine ligament\_ lat\_  
uter\_, sub sign\_ venen\_ pernicios\_, in  
tunic\_ mucos\_ (state), morb\_ col\_, sine  
insufficienti\_ valvul\_ dextr\_

# Join the expressions meaningfully

glandula, sub signo, ligamento, anomaliae, bulbus,  
post fracturam, medicamentum, in vesica, septum,  
sine insufficientia, digiti, colicae, columna,  
extractum, rami, intestino, unguentis, morborum,  
vena, acromion, rimae, ante therapiam, atrophiam, in  
membranam, gutta, prope medullam, methodus

interosseam, nova, complicatae, oculi, musculorum,  
oblongatam, caeco, scapulae, valvulae,  
chronicorum, belladonnae, veneni, aquae, fellea,  
complicatam, medii, chirurgicam, thyroidea, portae,  
novum, nasi, congenitae, palpebrarum, nervorum,  
uteri, glycerini, vertebrarum

# Give the plural

diameter obliquus, medicamentum pro  
adulto, rami dextri, periodo longa, sine  
periculo acuto, digiti medii, ad scapulam  
sinistram, ascites alvi, prope intestinum  
crassum, post therapiam operativam, sub  
olecranon ulnae, anguli costae, sutura cranii,  
propter fracturam costae verae

# Give Latin/Greek names of colours

white

yellow

black

grey

green

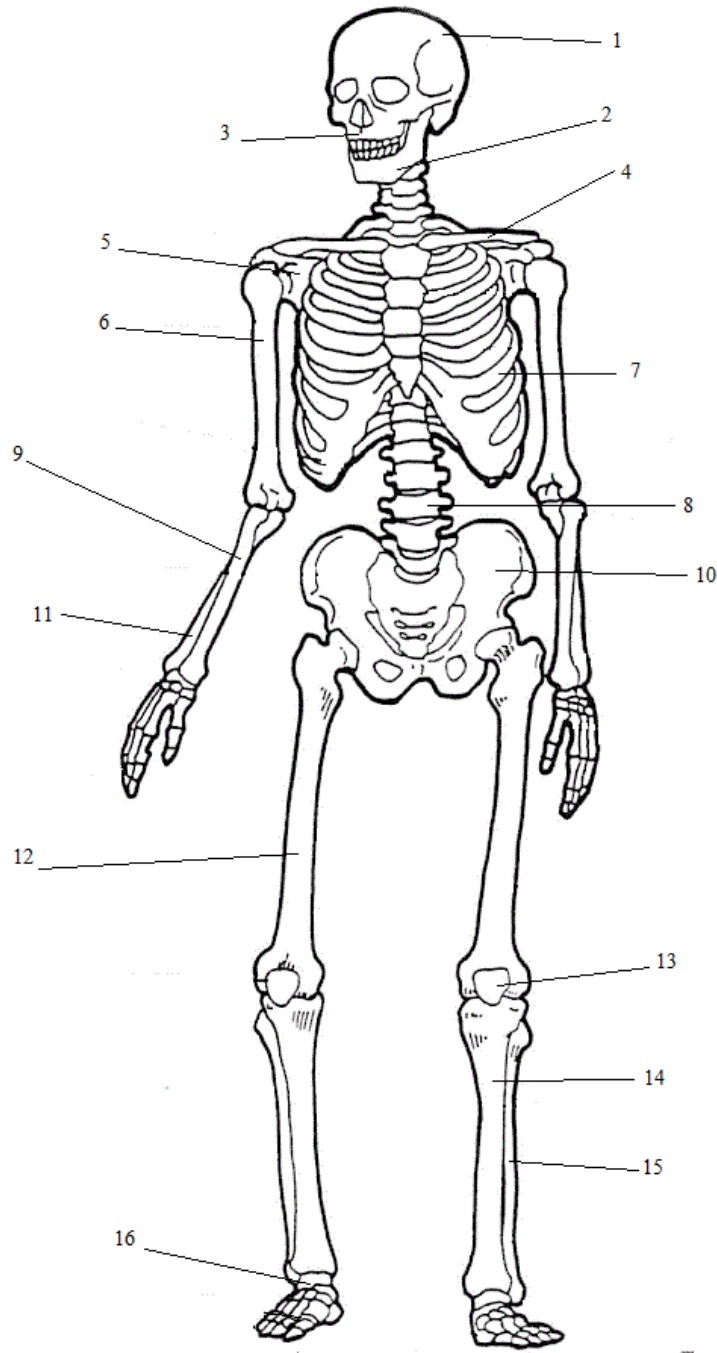
pale

blue

red

colourless

purple



Name the parts of the skeleton you already know

# Translate

substantia compacta, tunica mucosa vesicae felleae, sine aqua destillata, pneumonia chronica, insufficientia vesicae urinariae postoperativa, virus periculosum, arteria nutricia humeri, ligamenta lata uteri, unguentum glycerini, medicamentum bonum pro aegrotis, in lagoenam sterilisatam, fractura complicata scapulae dextrae, in glandula linguae, ova in ovario, prope venam cavam, pneumonia adamantina, ostium tubae auditivae, olecranon ulnae, in loco frigido

# Translate into Latin

little hollow, without caecum intestine, cancer of gullet, congenital fissure of palate, with a new medicament, right branch of veins, posttraumatic bleeding in the brain because of rupture of vein, thoracic vertebra, in thyroid gland, because of contagious disease, in acute danger, after complicated fracture of calf bone, with congenital anomaly of wrist, open fracture of ankle, near to pericardium, without pale lips



# Name the parts of gastrointestinal tract you already know

