

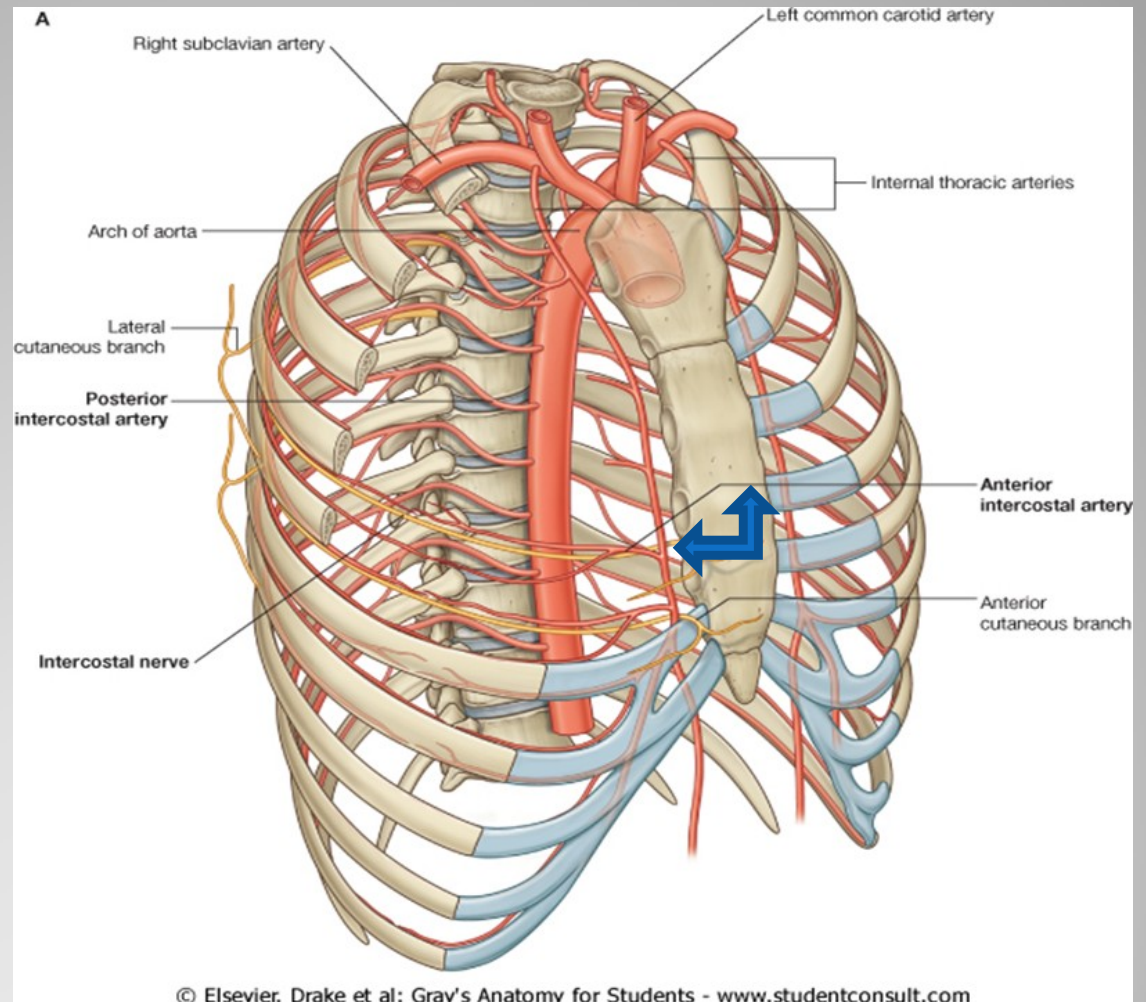
# Questions

What is the form of an adjective put to a noun dependent on?

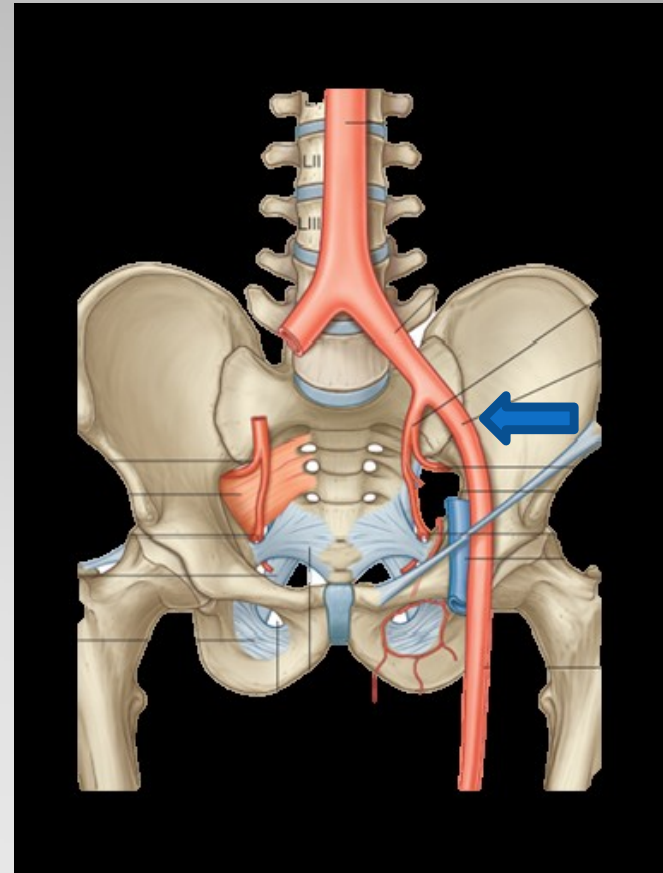
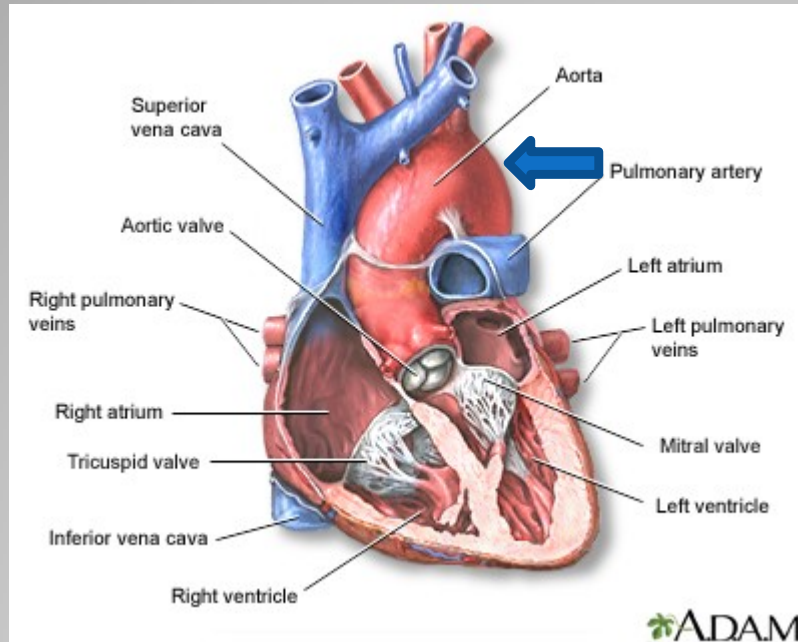
What are the endings of the adjectives?

How do we decline the adjectives like e.g. *magnus, a, um* (*liber, era, erum*)?

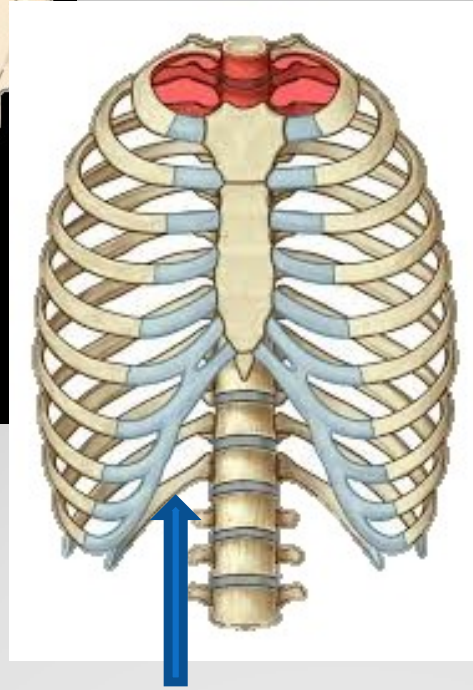
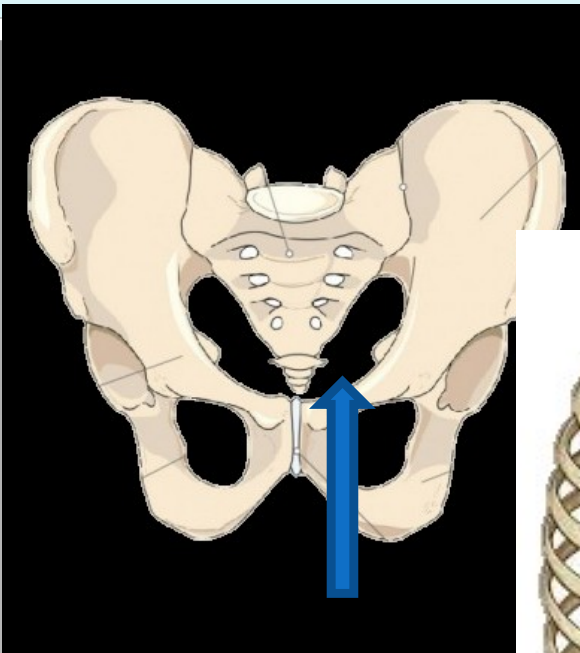
What prepositions are used with Accusative  
Ablative  
both?



**internal thoracic artery?**



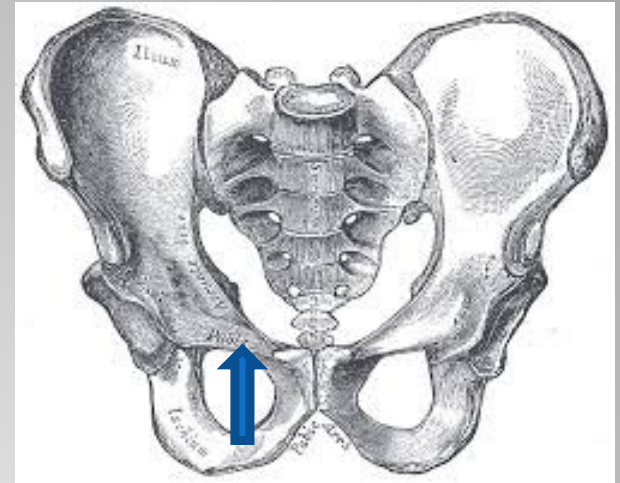
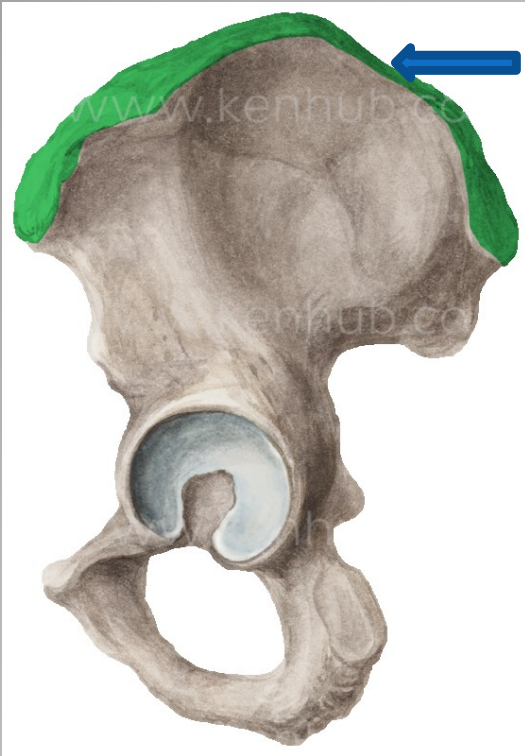
**external iliac artery?**  
**arch of aorta?**



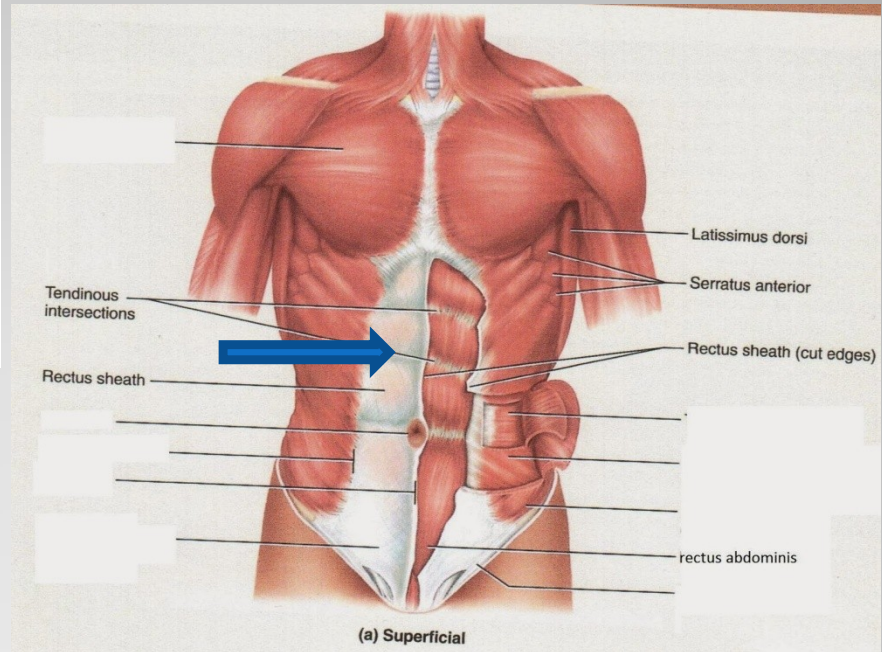
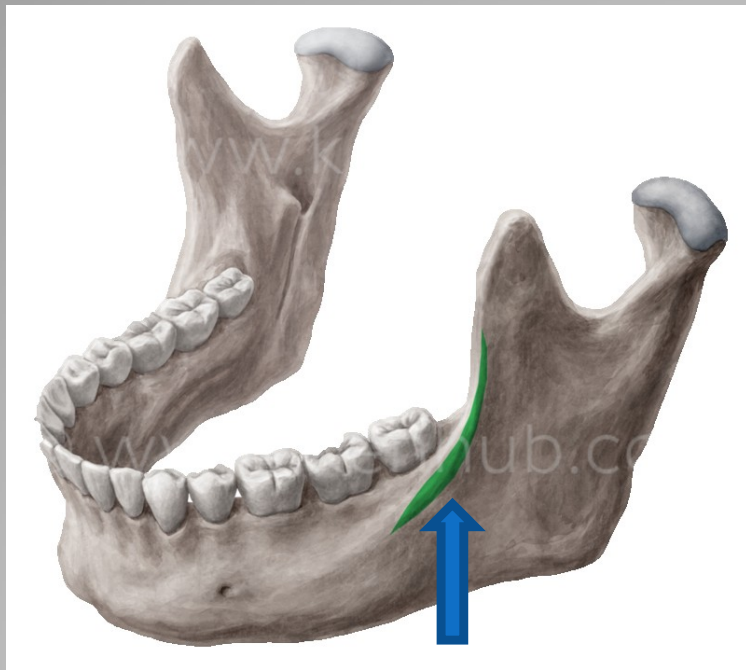
**aperture of pelvis?  
thoracic aperture?**

**medial raphé?**

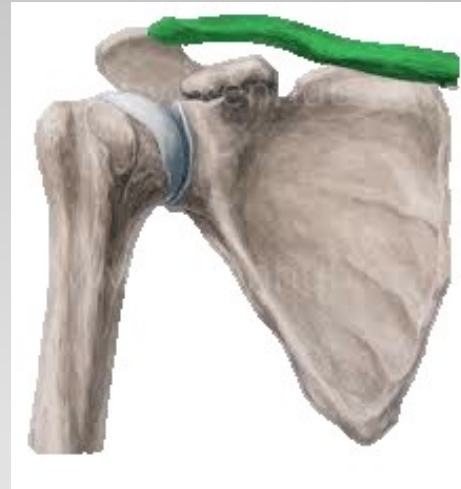
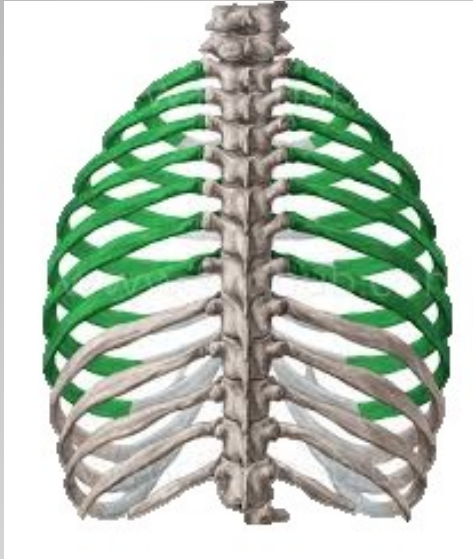




**iliac crest?**  
**ridges of skin (dermal ridges)?**  
**pubic crest?**



**oblique line of lower jaw?  
white line?**



**right tibial bone?  
true ribs?**

**right collar bone?  
left ulnar bone?**



**left lower jaw?**

**right fibula?**

**spine of right shoulder blade?**

**thoracic vertebrae?**



primus, a, um

secundus, a, um

tertius, a, um

quartus, a, um

quintus, a, um

sextus, a, um

septimus, a, um

octavus, a, um

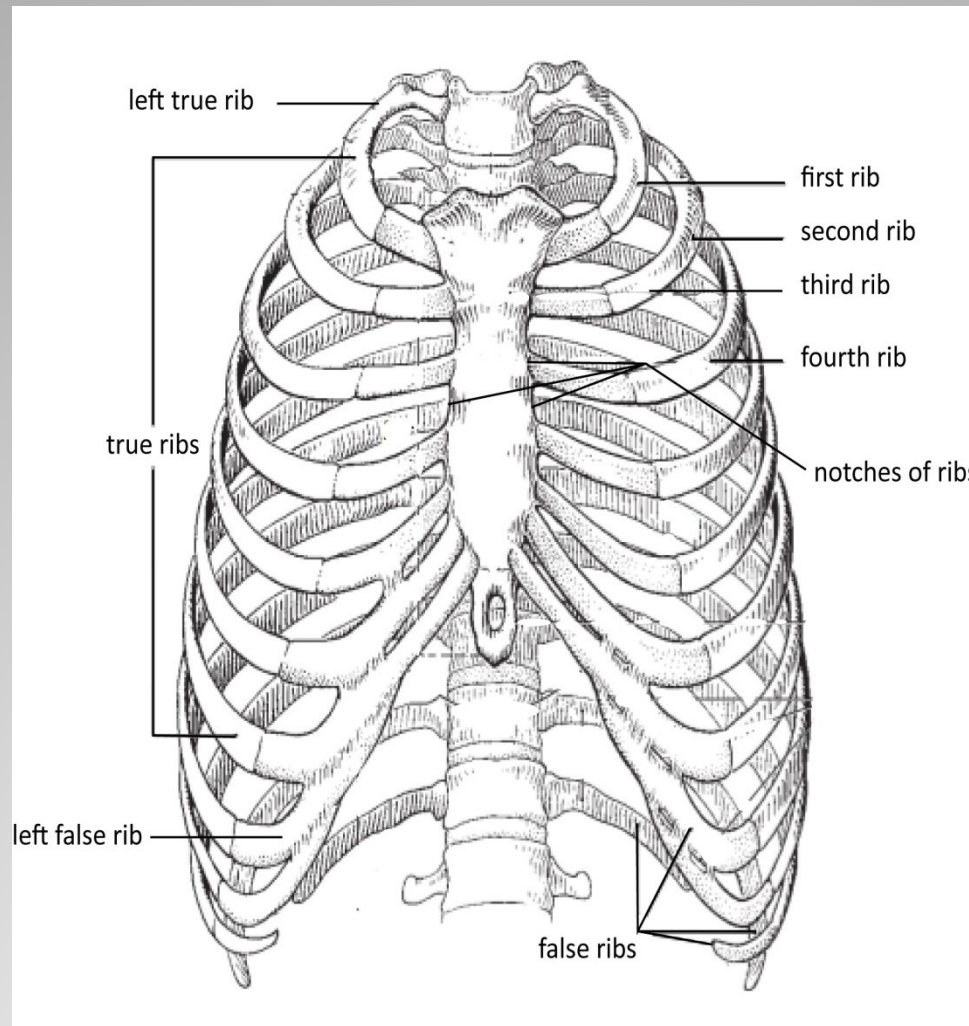
nonus, a, um

decimus, a, um

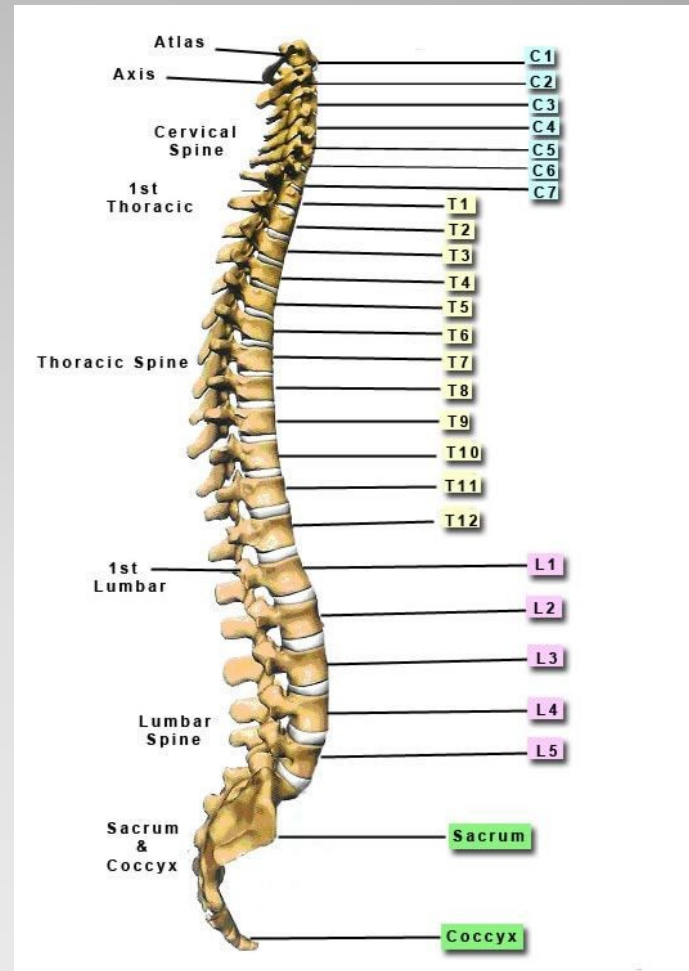
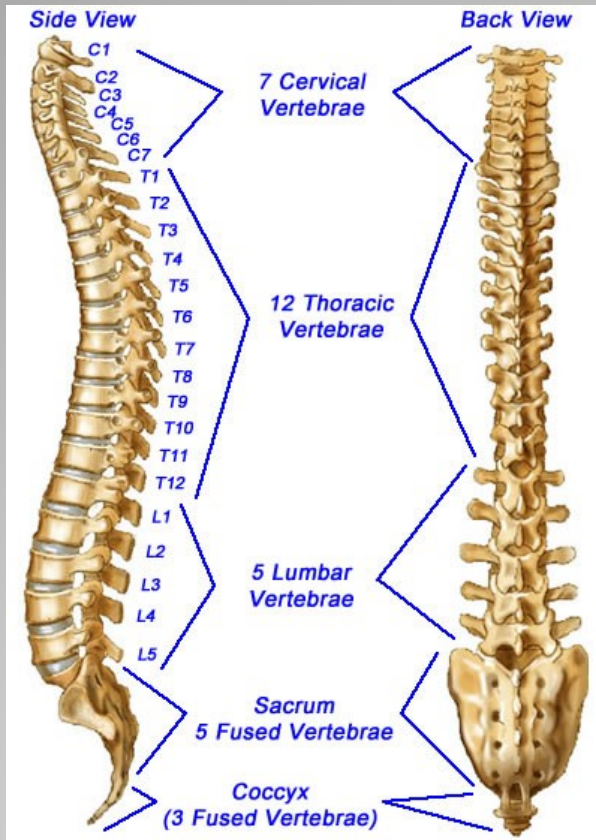
undecimus, a, um

duodecimus, a, um

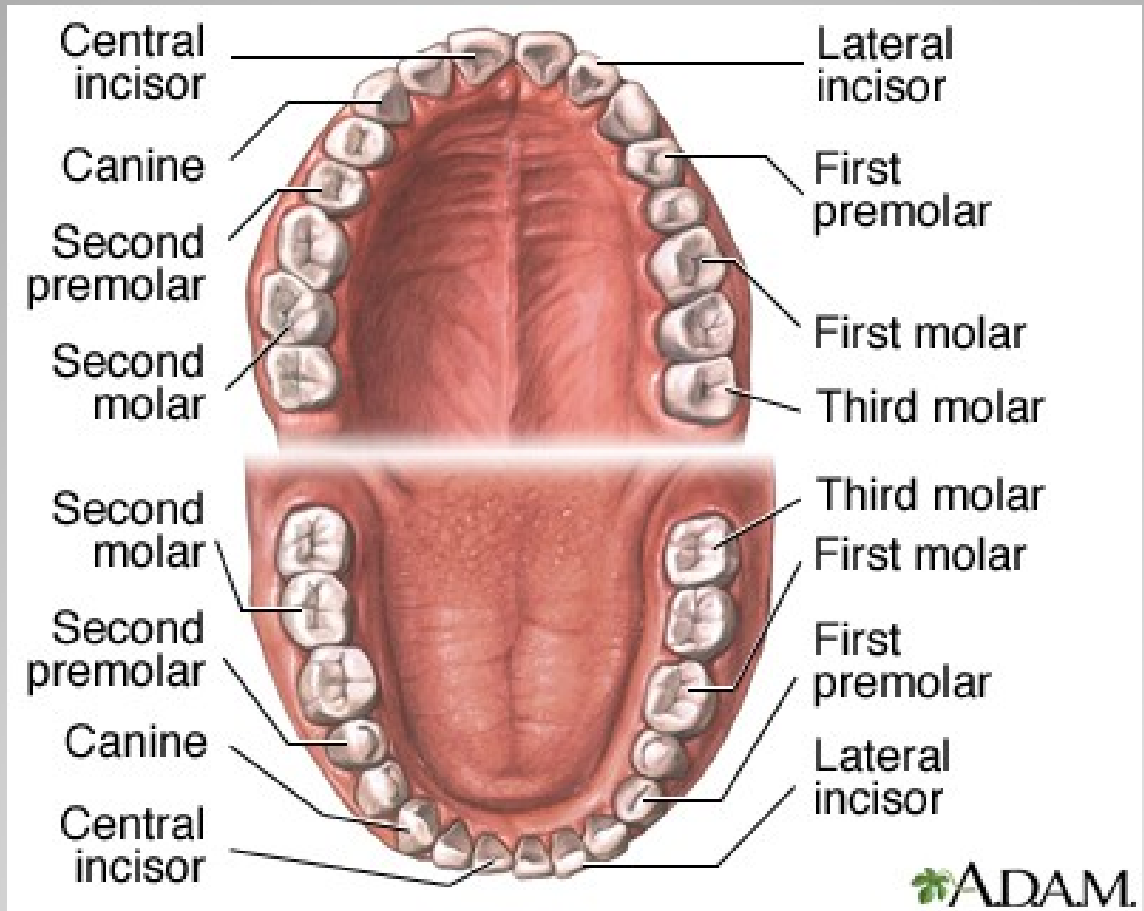
## Ordinal numbers



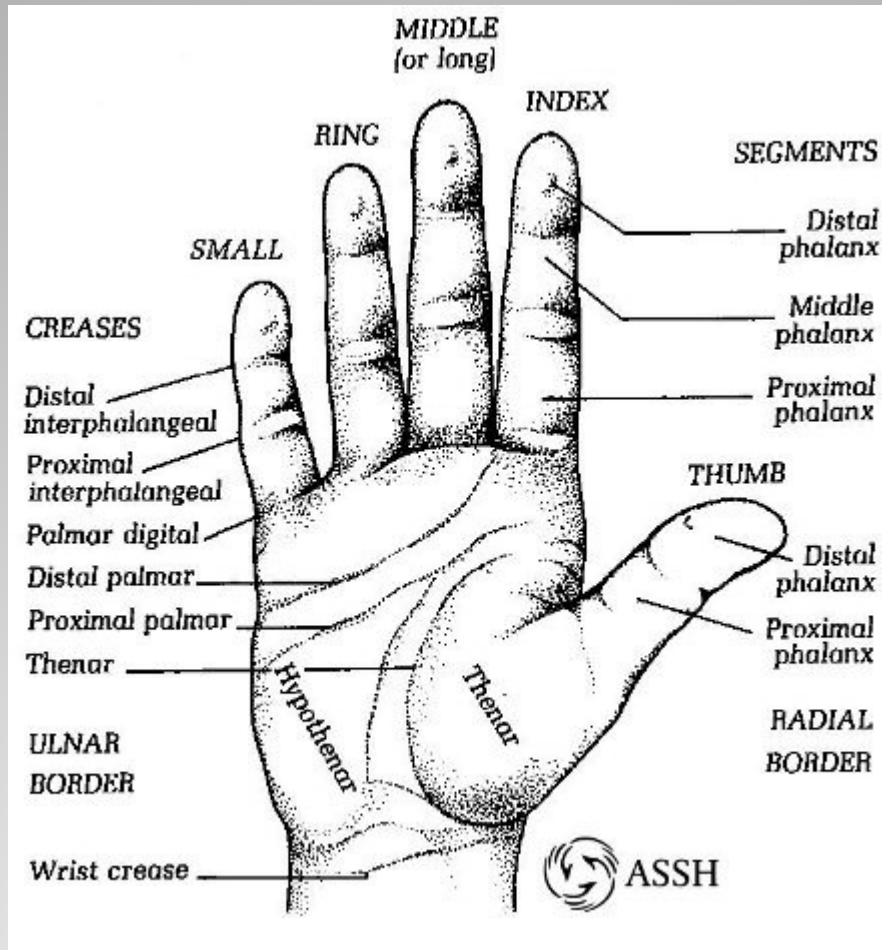
# Ribs



# Vertebras



# Teeth



# Fingers



Latin		Greek	
II.		II.	
nervus	septum	<i>nephros</i>	<i>colon</i>
m.	n.	m.	n.
-us/-er	-um	-os	-on
-ī	-ī	-ī	-ī
-um	1	-on	1
-ō	-ō	-ō	-ō
-ī	-a	-ī	-a
-ōrum	-ōrum	-ōrum	-ōrum
-ōs	1	-ōs	1
-īs	-īs	-īs	-īs

Gen. sg. -I

Gender M (F)/N

Nouns of the female gender in this declension are exceptions

Nom. sg. -US/-ER/-OS

Gender M (F)

Nom. sg. -UM/-ON

Gender N

## 2nd declension